

World Journal of *Gastroenterology*

World J Gastroenterol 2017 December 28; 23(48): 8439-8678



**EDITORIAL**

- 8439** Serum levels of angiotensin converting enzyme as a biomarker of liver fibrosis

Miranda AS, Simões e Silva AC

MINIREVIEWS

- 8443** Mechanisms of autophagy activation in endothelial cell and their targeting during normothermic machine liver perfusion

Boteon YL, Laing R, Mergental H, Reynolds GM, Mirza DF, Afford SC, Bhogal RH

ORIGINAL ARTICLE**Basic Study**

- 8452** Human small intestine is capable of restoring barrier function after short ischemic periods

Schellekens DH, Hundscheid IH, Leenarts CA, Grootjans J, Lenaerts K, Buurman WA, Dejong CH, Derikx JP

- 8465** Stable gastric pentadecapeptide BPC 157 in treatment of colitis and ischemia and reperfusion in rats: New insights

Duzel A, Vlajnic J, Antunovic M, Malekinusic D, Vrdoljak B, Samara M, Gojkovic S, Krezic I, Vidovic T, Bilic Z, Knezevic M, Sever M, Lojo N, Kokot A, Kolovrat M, Drmic D, Vukojevic J, Kralj T, Kasnik K, Siroglavic M, Seiwerth S, Sikiric P

- 8489** Exploring pathogenesis of primary biliary cholangitis by proteomics: A pilot study

Deng CW, Wang L, Fei YY, Hu CJ, Yang YJ, Peng LY, Zeng XF, Zhang FC, Li YZ

- 8500** Influence of TBX21 T-1993C variant on autoimmune hepatitis development by Yin-Yang 1 binding

Sun W, Wu HY, Chen S

- 8512** Astragaloside IV inhibits pathological functions of gastric cancer-associated fibroblasts

Wang ZF, Ma DG, Zhu Z, Mu YP, Yang YY, Feng L, Yang H, Liang JQ, Liu YY, Liu L, Lu HW

Retrospective Cohort Study

- 8526** Prevalence and outcomes of pancreatic cystic neoplasms in liver transplant recipients

Liu K, Joshi V, van Camp L, Yang QW, Baars JE, Strasser SI, McCaughan GW, Majumdar A, Saxena P, Kaffes AJ

Retrospective Study

- 8533** Analysis of 12 variants in the development of gastric and colorectal cancers

Cavalcante GC, Amador MA, Ribeiro dos Santos AM, Carvalho DC, Andrade RB, Pereira EE, Fernandes MR, Costa DF, Santos NP, Assumpção PP, Ribeiro dos Santos Á, Santos S

- 8544** Childhood-onset inflammatory bowel diseases associated with mutation of Wiskott-Aldrich syndrome protein gene

Ohya T, Yanagimachi M, Iwasawa K, Umetsu S, Sogo T, Inui A, Fujisawa T, Ito S

- 8553** Comparison of totally laparoscopic total gastrectomy using an endoscopic linear stapler with laparoscopic-assisted total gastrectomy using a circular stapler in patients with gastric cancer: A single-center experience

Gong CS, Kim BS, Kim HS

- 8562** Prognostic significance of pretreatment serum carcinoembryonic antigen levels in gastric cancer with pathological lymph node-negative: A large sample single-center retrospective study

Xiao J, Ye ZS, Wei SH, Zeng Y, Lin ZM, Wang Y, Teng WH, Chen LC

- 8570** Fecal microbiota transplantation induces remission of infantile allergic colitis through gut microbiota re-establishment

Liu SX, Li YH, Dai WK, Li XS, Qiu CZ, Ruan ML, Zou B, Dong C, Liu YH, He JY, Huang ZH, Shu SN

- 8582** Prognostic value of lymph node metastasis in patients with T1-stage colorectal cancer from multiple centers in China

Sun ZQ, Ma S, Zhou QB, Yang SX, Chang Y, Zeng XY, Ren WG, Han FH, Xie X, Zeng FY, Sun XT, Wang GX, Li Z, Zhang ZY, Song JM, Liu JB, Yuan WT

Clinical Trial Study

- 8591** Association between acute pancreatitis and small intestinal bacterial overgrowth assessed by hydrogen breath test

Zhang M, Zhu HM, He F, Li BY, Li XC

Observational Study

- 8597** Endoscopic papillary large balloon dilatation with sphincterotomy is safe and effective for biliary stone removal independent of timing and size of sphincterotomy

Aujla UI, Ladep N, Dwyer L, Hood S, Stern N, Sturgess R

- 8605** Person-centered endoscopy safety checklist: Development, implementation, and evaluation

Dubois H, Schmidt PT, Creutzfeldt J, Bergenmar M

Randomized Clinical Trials

- 8615** Multicenter, randomized study to optimize bowel preparation for colon capsule endoscopy

Kastenberg D, Burch WC, Romeo DP, Kashyap PK, Pound DC, Papageorgiou N, Fernández-Urien Sainz I, Sokach CE, Rex DK

SYSTEMATIC REVIEWS

- 8626** *Fusobacterium's* link to colorectal neoplasia sequenced: A systematic review and future insights

Hussan H, Clinton SK, Roberts K, Bailey MT

- 8651** Psychiatric morbidity after surgery for inflammatory bowel disease: A systematic review

Zangenberg MS, El-Hussuna A

CASE REPORT

- 8660** Stricturing Crohn's disease-like colitis in a patient treated with belatacept

Bozon A, Jeantet G, Rivière B, Funakoshi N, Dufour G, Combes R, Valats JC, Delmas S, Serre JE, Bismuth M, Ramos J, Le Quintrec M, Blanc P, Pineton de Chambrun G

- 8666** Emphysematous pancreatitis associated with penetrating duodenal ulcer

Tana C, Silingardi M, Giamberardino MA, Cipollone F, Meschi T, Schiavone C

- 8671** Infiltrative xanthogranulomatous cholecystitis mimicking aggressive gallbladder carcinoma: A diagnostic and therapeutic dilemma

Nacif LS, Hessheimer AJ, Rodríguez Gómez S, Montironi C, Fondevila C

ABOUT COVER

Editorial board member of *World Journal of Gastroenterology*, Paola Iovino, MD, Associate Professor, Lecturer, Department of Medicine and Surgery, AOU San Giovanni di Dio e Ruggi di Aragona, Salerno 84131, Italy

AIMS AND SCOPE

World Journal of Gastroenterology (*World J Gastroenterol*, *WJG*, print ISSN 1007-9327, online ISSN 2219-2840, DOI: 10.3748) is a peer-reviewed open access journal. *WJG* was established on October 1, 1995. It is published weekly on the 7th, 14th, 21st, and 28th each month. The *WJG* Editorial Board consists of 1375 experts in gastroenterology and hepatology from 68 countries.

The primary task of *WJG* is to rapidly publish high-quality original articles, reviews, and commentaries in the fields of gastroenterology, hepatology, gastrointestinal endoscopy, gastrointestinal surgery, hepatobiliary surgery, gastrointestinal oncology, gastrointestinal radiation oncology, gastrointestinal imaging, gastrointestinal interventional therapy, gastrointestinal infectious diseases, gastrointestinal pharmacology, gastrointestinal pathophysiology, gastrointestinal pathology, evidence-based medicine in gastroenterology, pancreatology, gastrointestinal laboratory medicine, gastrointestinal molecular biology, gastrointestinal immunology, gastrointestinal microbiology, gastrointestinal genetics, gastrointestinal translational medicine, gastrointestinal diagnostics, and gastrointestinal therapeutics. *WJG* is dedicated to become an influential and prestigious journal in gastroenterology and hepatology, to promote the development of above disciplines, and to improve the diagnostic and therapeutic skill and expertise of clinicians.

INDEXING/ABSTRACTING

World Journal of Gastroenterology (*WJG*) is now indexed in Current Contents[®]/Clinical Medicine, Science Citation Index Expanded (also known as SciSearch[®]), Journal Citation Reports[®], Index Medicus, MEDLINE, PubMed, PubMed Central and Directory of Open Access Journals. The 2017 edition of Journal Citation Reports[®] cites the 2016 impact factor for *WJG* as 3.365 (5-year impact factor: 3.176), ranking *WJG* as 29th among 79 journals in gastroenterology and hepatology (quartile in category Q2).

FLYLEAF

I-IX Editorial Board

EDITORS FOR THIS ISSUE

Responsible Assistant Editor: *Xiang Li*
Responsible Electronic Editor: *Yu-Jie Ma*
Proofing Editor-in-Chief: *Lian-Sheng Ma*

Responsible Science Editor: *Ze-Mao Gong*
Proofing Editorial Office Director: *Jin-Lei Wang*

NAME OF JOURNAL
World Journal of Gastroenterology

ISSN
ISSN 1007-9327 (print)
ISSN 2219-2840 (online)

LAUNCH DATE
October 1, 1995

FREQUENCY
Weekly

EDITORS-IN-CHIEF
Damian Garcia-Olmo, MD, PhD, Doctor, Professor, Surgeon, Department of Surgery, Universidad Autonoma de Madrid; Department of General Surgery, Fundacion Jimenez Diaz University Hospital, Madrid 28040, Spain

Stephen C Strom, PhD, Professor, Department of Laboratory Medicine, Division of Pathology, Karolinska Institutet, Stockholm 141-86, Sweden

Andrzej S Tarnawski, MD, PhD, DSc (Med), Professor of Medicine, Chief Gastroenterology, VA Long Beach Health Care System, University of California, Irvine, CA, 5901 E. Seventh Str., Long Beach,

CA 90822, United States

EDITORIAL BOARD MEMBERS
All editorial board members resources online at <http://www.wjgnet.com/1007-9327/editorialboard.htm>

EDITORIAL OFFICE
Jin-Lei Wang, Director
Ze-Mao Gong, Vice Director
World Journal of Gastroenterology
Baishideng Publishing Group Inc
7901 Stoneridge Drive, Suite 501,
Pleasanton, CA 94588, USA
Telephone: +1-925-2238242
Fax: +1-925-2238243
E-mail: editorialoffice@wjgnet.com
Help Desk: <http://www.f6publishing.com/helpdesk>
<http://www.wjgnet.com>

PUBLISHER
Baishideng Publishing Group Inc
7901 Stoneridge Drive, Suite 501,
Pleasanton, CA 94588, USA
Telephone: +1-925-2238242
Fax: +1-925-2238243
E-mail: bpgoffice@wjgnet.com
Help Desk: <http://www.f6publishing.com/helpdesk>
<http://www.wjgnet.com>

PUBLICATION DATE
December 28, 2017

COPYRIGHT
© 2017 Baishideng Publishing Group Inc. Articles published by this Open-Access journal are distributed under the terms of the Creative Commons Attribution Non-commercial License, which permits use, distribution, and reproduction in any medium, provided the original work is properly cited, the use is non commercial and is otherwise in compliance with the license.

SPECIAL STATEMENT
All articles published in journals owned by the Baishideng Publishing Group (BPG) represent the views and opinions of their authors, and not the views, opinions or policies of the BPG, except where otherwise explicitly indicated.

INSTRUCTIONS TO AUTHORS
Full instructions are available online at <http://www.wjgnet.com/bpg/gerinfo/204>

ONLINE SUBMISSION
<http://www.f6publishing.com>

Retrospective Study

Prognostic value of lymph node metastasis in patients with T1-stage colorectal cancer from multiple centers in China

Zhen-Qiang Sun, Shuai Ma, Quan-Bo Zhou, Shuai-Xi Yang, Yuan Chang, Xiang-Yue Zeng, Wei-Guo Ren, Fang-Hai Han, Xiang Xie, Fan-Ye Zeng, Xian-Tao Sun, Gui-Xian Wang, Zhen Li, Zhi-Yong Zhang, Jun-Min Song, Jin-Bo Liu, Wei-Tang Yuan

Zhen-Qiang Sun, Shuai Ma, Quan-Bo Zhou, Shuai-Xi Yang, Yuan Chang, Xian-Tao Sun, Gui-Xian Wang, Zhen Li, Zhi-Yong Zhang, Jun-Min Song, Jin-Bo Liu, Wei-Tang Yuan, Department of Anorectal Surgery, the First Affiliated Hospital of Zhengzhou University, Zhengzhou 450052, Henan Province, China

Zhen-Qiang Sun, Xiang-Yue Zeng, Department of Gastrointestinal Surgery, the Affiliated Tumor Hospital of Xinjiang Medical University, Urumqi 830001, Xinjiang Uygur Autonomous Region, China

Wei-Guo Ren, Department of Gastroenterology, the Third Xiangya Hospital of Central South University, Changsha 410013, Hunan Province, China

Fang-Hai Han, Department of Gastrointestinal Surgery, Sun Yat-sen Memorial Hospital of Sun Yat-sen University, Guangzhou 510000, Guangdong Province, China

Xiang Xie, Department of Coronary Artery Disease, Heart Center, the First Affiliated Hospital of Xinjiang Medical University, Urumqi 830001, Xinjiang Uygur Autonomous Region, China

Fan-Ye Zeng, Department of Oncology, the Affiliated Hospital of Traditional Chinese Medicine of Xinjiang Medical University, Urumqi 830001, Xinjiang Uygur Autonomous Region, China

ORCID number: Zhen-Qiang Sun (0000-0001-5926-2716); Shuai Ma (0000-0003-1771-6585); Quan-Bo Zhou (0000-0003-2406-9339); Shuai-Xi Yang (0000-0002-9383-6469); Yuan Chang (0000-0002-3708-3474); Xiang-Yue Zeng (0000-0001-5983-1974); Wei-Guo Ren (0000-0002-2691-1537); Fang-Hai Han (0000-0002-1347-7292); Xiang Xie (0000-0001-7909-3876); Fan-Ye Zeng (0000-0002-5239-2128); Xian-Tao Sun (0000-0002-6620-5725); Gui-Xian Wang (0000-0001-9115-3405); Zhen Li (0000-0003-4928-8407); Zhi-Yong Zhang (0000-0001-5647-1563); Jun-Min Song (0000-0003-0557-1673); Jin-Bo Liu (0000-0002-7719-3205); Wei-Tang Yuan (0000-0003-2866-6261).

Author contributions: Sun ZQ, Ma S and Zhou QB contributed equally to this work; Sun ZQ and Zhou QB designed the study and analyzed the data; Ma S, Yang SX and Chang Y performed the experiments; Ma S wrote the paper; Zeng XY, Ren WG, Han FH, Xie X, Zeng FY, Sun XT, Wang GX, Li Z, Zhang ZY, and Song JM collected the data; Liu JB and Yuan WT designed the study and revised the paper; all authors have read and approved the final version to be published.

Institutional review board statement: All tissues have been approved by the Ethics Review Committee of the First Affiliated Hospital of Zhengzhou University before they were used for research purposes.

Informed consent statement: All patients who provided clinical material signed an informed consent form.

Conflict-of-interest statement: All authors have declared that there is no conflict of interest.

Data sharing statement: No additional data are available for this manuscript.

Open-Access: This article is an open-access article which was selected by an in-house editor and fully peer-reviewed by external reviewers. It is distributed in accordance with the Creative Commons Attribution Non Commercial (CC BY-NC 4.0) license, which permits others to distribute, remix, adapt, build upon this work non-commercially, and license their derivative works on different terms, provided the original work is properly cited and the use is non-commercial. See: <http://creativecommons.org/licenses/by-nc/4.0/>

Manuscript source: Unsolicited manuscript

Correspondence to: Wei-Tang Yuan, MD, PhD, Chief physician, Professor, Department of Anorectal Surgery, the First Affiliated Hospital of Zhengzhou University, No. 1, Jianshe Road, Zhengzhou 450052, Henan Province, China. yuanweitang@zzu.edu.cn

Telephone: +1-51-49341934
Fax: +1-51-48431434

Received: July 20, 2017
Peer-review started: July 21, 2017
First decision: August 30, 2017
Revised: October 21, 2017
Accepted: November 28, 2017
Article in press: November 28, 2017
Published online: December 28, 2017

Key words: Colorectal cancer; Lymph node metastasis; T1 stage; Prognosis

© **The Author(s) 2017.** Published by Baishideng Publishing Group Inc. All rights reserved.

Abstract

AIM

To explore the features and prognostic value of lymph node metastasis in patients with T1-stage colorectal cancer (CRC).

METHODS

In all, 321 cases of T1-stage CRC were selected from 10132 patients with CRC who received surgical therapy in six large-scale hospitals in China and were retrospectively analyzed. Univariate and multivariate analyses were performed to analyze the risk factors for lymphatic metastasis. A survival analysis was then performed to analyze the prognostic value of lymph node metastasis.

RESULTS

The occurrence rate of T1 stage was 3.17% (321/10132); of these patients, the lymph node metastasis rate was 8.41% (27/321), and the non-lymph node metastasis rate was 91.59% (294/321). Univariate analysis showed that preoperative serum CEA, preoperative serum CA199, preoperative serum CA724, vascular invasion, and degree of differentiation were associated with lymph node metastasis in T1-stage CRC ($P < 0.05$ for all). Multivariate analysis indicated that preoperative serum CA724, vascular invasion, and degree of differentiation were closely related to lymph node metastasis ($P < 0.05$ for all). Log-rank survival analysis showed that age, preoperative serum CEA, preoperative serum CA199, vascular invasion, degree of differentiation, and lymph node metastasis ($\chi^2 = 24.180$, $P < 0.001$) were predictors of 5-year overall survival (OS) ($P < 0.05$ for all). COX regression analysis demonstrated that preoperative serum CA199 and lymph node metastasis (HR = 5.117; $P < 0.05$; 95%CI: 0.058-0.815) were independent prognostic indicators of 5-year OS in patients with T1-stage CRC ($P < 0.05$ for both).

CONCLUSION

The morbidity of T1-stage CRC was 3.17% for all CRC cases. Preoperative serum CA724, vascular invasion, and degree of differentiation are independent risk factors for lymph node metastasis. Lymph node metastasis is an independent prognostic factor for OS in patients with T1-stage CRC.

Core tip: The high morbidity of patients with colorectal cancer (CRC) is caused by the likelihood of recurrence and metastasis. This study focused on the features and prognostic value of lymph node metastasis in patients with T1-stage CRC. According to the statistical analysis, we found a very low morbidity in patients with T1-stage CRC. Moreover, our findings confirm that preoperative serum CA724, vascular invasion, and degree of differentiation were independent risk factors for lymph node metastasis, which was demonstrated to be an independent prognostic factor for 5-year OS in patients with T1-stage CRC.

Sun ZQ, Ma S, Zhou QB, Yang SX, Chang Y, Zeng XY, Ren WG, Han FH, Xie X, Zeng FY, Sun XT, Wang GX, Li Z, Zhang ZY, Song JM, Liu JB, Yuan WT. Prognostic value of lymph node metastasis in patients with T1-stage colorectal cancer from multiple centers in China. *World J Gastroenterol* 2017; 23(48): 8582-8590 Available from: URL: <http://www.wjgnet.com/1007-9327/full/v23/i48/8582.htm> DOI: <http://dx.doi.org/10.3748/wjg.v23.i48.8582>

INTRODUCTION

Colorectal cancer (CRC) is one of the most common malignancies worldwide^[1]. With economic development and changes in dietary history, CRC has shown a steadily increasing incidence and is now the fifth leading cause of cancer-related death in China^[2,3]. Due to adverse treatment-related side effects and the poor prognosis of this disease, which results from easy recurrence and metastasis, oncotherapy for CRC has posed a dilemma^[4]. In addition, lymph node metastasis is the main type of metastasis in advanced CRC. The occurrence rate of T1-stage CRC has been reported to be approximately 3.51%^[5,6]. When the tumor is completely removed, patients with T1-stage CRC generally have a good prognosis. However, because metastasis does not often occur in lymph nodes in T1-stage CRC, lymph node metastasis is often overlooked during the process of diagnosis and treatment. Nevertheless, lymph node metastasis is one of the most essential prognostic risk factors. Chock *et al*^[7] reported that the incidence of lymph node metastasis was 5.6% in T1-stage CRC, whereas Gao *et al*^[8] demonstrated that the occurrence of lymph node metastasis was 5.5% in T1-stage CRC. Zheng *et al*^[9] reported that elevated serum levels of tumor markers indicated a high risk of cancer recurrence and poor survival, yet the relationship between tumor

markers and lymph node metastasis in T1-stage CRC remains unknown. Our study found that the incidence of lymph node metastasis was 8.41% in T1-stage CRC. What is the detailed prognostic value of lymph node metastasis in T1-stage CRC? This question has received increased attention in clinical practice, but as of now, no definite answer has been provided.

In this study, 321 cases of T1-stage CRC were selected from 10132 patients with CRC who received surgical therapy in six large-scale hospitals in China and were retrospectively analyzed. A statistical analysis was performed to analyze the features of lymph node metastasis and to evaluate its risk factors and prognostic value in patients with T1-stage CRC. These data will provide a theoretical basis for more effective treatment of patients with T1-stage CRC.

MATERIALS AND METHODS

Research subjects

In all, 321 cases of T1-stage CRC were screened from 10132 patients with CRC who received surgical therapy in six large-scale hospitals in China (the First Affiliated Hospital of Zhengzhou University, the Affiliated Tumor Hospital of Xinjiang Medical University, Sun Yat-sen Memorial Hospital of Sun Yat-sen University, the First Affiliated Hospital of Xinjiang Medical University, the Third Xiangya Hospital of Central South University, and the Affiliated Hospital of Traditional Chinese Medicine of Xinjiang Medical University) from June 2001 to June 2011. These cases consisted of 172 males and 149 females. The mean patient age was 61.37 ± 13.41 years. Prior to participation, a diagnosis of CRC was confirmed by histopathology for all patients. The tumor-node-metastasis (TNM) stage was determined according to the American Joint Committee on Cancer/International Union Against Cancer TNM staging system for colorectal cancer (2010, 7th edition). No patient received preoperative chemotherapy, radiotherapy, or immunotherapy. The following exclusion criteria were used: cases with incomplete clinical data, those who were inappropriate for statistical analysis, cases who had other malignant tumors, and cases who were treated by endoscopic resection.

All tissues were approved by the Ethics Review Committees of the First Affiliated Hospital of Zhengzhou University before they were used for research purposes. All the patients who provided clinical material signed an informed consent form.

Patient follow-up

After surgery, the patients were assessed once a month for the first 6 mo, once every 3 mo from 6 mo to 2 years, once every 6 mo from 2 years to 5 years, and finally, once a year after 5 years. Follow-ups were conducted either by outpatient or inpatient review or by telephone. Forty patients did not participate in the

follow-up analyses because they did not communicate with the physicians after surgery. In addition, 16 patients developed dysthymia and were unable to cooperate for the remainder of the study, two patients committed suicide, and 21 patients did not participate in the follow-up for unknown reasons. Therefore, the total follow-up rate in the study was 75.39%.

Chemotherapy and radical surgery

According to the NCCN Guidelines, CRC with lymph node metastasis is defined as stage III disease, but postoperative chemotherapy should be performed in CRC patients with lymph node metastasis, regardless of T stage. FOLFOX6 was used as the first-line adjuvant or neoadjuvant therapy regimen for CRC patients with stage III disease. CapeOX was used as either a first- or second-line adjuvant or neoadjuvant chemotherapy regimen for patients with stage III CRC, those with drug resistance, or those with postoperative recurrence. FOLFIRI was used as the chemotherapy regimen for CRC patients with postoperative recurrence, metastasis, or drug resistance.

Radical surgery was performed according to complete mesocolic excision for patients with colon cancer and total mesorectal excision for patients with rectal cancer. All the patients received scheduled surgery (*i.e.*, not emergency surgery). More than 12 lymph nodes were removed during surgery.

Statistical analysis

All statistical analyses were performed with SPSS version 18.0. Graphs were constructed with GraphPad Prism software. Univariate analysis was performed using the χ^2 test to analyze the association between lymph node metastasis and clinicopathological parameters. Kaplan-Meier survival curves and the log-rank test were used to compare the group with lymph node metastasis and the group without lymph node metastasis. The multivariate survival analysis was performed using the Cox regression model to determine the relative risk (RR) and 95% CI. Statistical significance was defined as $P < 0.05$.

RESULTS

Univariate analysis of correlation between lymph node metastasis and clinicopathological parameters of patients with T1-stage CRC

In all, 321 patients with T1-stage CRC were divided into a lymph node metastasis group (27 cases) and a non-lymph node metastasis group (294 cases). The occurrence rate of lymph node metastasis was 8.41%. The univariate analysis showed that lymph node metastasis was associated with preoperative CEA, preoperative CA199, preoperative CA724, vascular invasion, and degree of differentiation ($P < 0.05$, for all parameters; Table 1). Lymph node metastasis was not associated with gender, age, smoking status, absolute

Table 1 Univariate analysis of correlation between lymph node metastasis and clinicopathological parameters of T1-stage colorectal cancer patients

Clinicopathological characteristic	n	Lymph node metastasis		χ^2	P value
		Yes	No		
Gender				1.955	0.162
Male	172	11	161		
Female	149	16	133		
Age (yr)				0.436	0.509
≥ 60	174	13	161		
< 60	147	14	133		
Smoking				0.766	0.382
No	279	22	257		
Yes	42	5	37		
Preoperative CEA (ng/mL)				5.994	0.014
< 5	284	20	264		
≥ 5	37	7	30		
Preoperative CA199 (ng/mL)				5.015	0.025
< 9	173	9	164		
≥ 9	148	18	130		
Preoperative CA724 (ng/mL)				12.275	0.000
< 2	163	5	158		
≥ 2	158	22	136		
Granulocyte absolute value				0.771	0.380
< 2.2	32	4	28		
≥ 2.2	289	23	266		
D-dimer				2.227	0.136
< 0.21	158	17	141		
≥ 0.21	163	10	153		
Preoperative hemoglobin				1.504	0.220
< 132	154	16	138		
≥ 132	167	11	156		
Vascular invasion				18.421	0.000
No	313	23	290		
Yes	8	4	4		
Tumor location				1.184	0.277
Rectum	170	17	153		
Colon	151	10	141		
Tumor size (cm)				1.526	0.217
< 3	190	19	171		
≥ 3	131	8	123		
Differentiation degree				7.723	0.005
High/moderate	307	23	284		
Low	14	4	10		
Tumor general type				0.219	0.640
Ulcer	238	19	219		
Non-ulcer	83	8	75		
Tumor tissue type				2.293	0.130
Non-adenocarcinoma	9	2	7		
Adenocarcinoma	312	25	287		

granulocyte count, D-dimer value, preoperative hemoglobin level, tumor location, tumor size, general tumor type, or tumor tissue type ($P > 0.05$ for all).

Multivariate analysis of correlation between lymph node metastasis and clinicopathological parameters of patients with T1-stage CRC

The multivariate analysis showed that lymph node metastasis was associated with preoperative CA724, vascular invasion, and degree of differentiation ($P < 0.05$ for all parameters; Table 2). Lymph node metastasis was not associated with gender, age, smoking status, preoperative CEA, preoperative CA199, absolute granulocyte count, D-dimer value, preoperative hemoglobin level, tumor location, tumor size, general

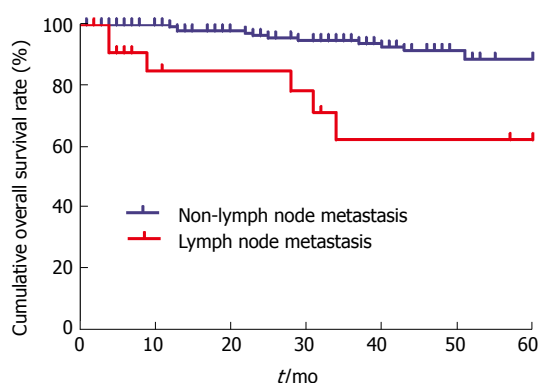
tumor type, or tumor tissue type ($P > 0.05$ for all).

Univariate analysis of correlation between clinicopathological parameters and 5-year OS

As shown in Table 3, the univariate survival analysis demonstrated that age, preoperative CEA, preoperative CA199, vascular invasion, degree of differentiation, and lymph node metastasis ($\chi^2 = 24.180$, $P < 0.001$) were associated with 5-year OS ($P < 0.05$ for all). Gender, smoking status, preoperative CA724, absolute granulocyte count, D-dimer value, preoperative hemoglobin level, tumor location, tumor size, general tumor type, and tissue type were not associated with 5-year OS ($P > 0.05$ for all). The Kaplan-Meier curve showed that the 5-year OS of patients in the lymph

Table 2 Multivariate analysis of correlation between lymph node metastasis and clinicopathological parameters of T1-stage colorectal cancer patients

Clinicopathological characteristic	HR	P value	95%CI	
			Lower bound	Upper bound
Gender, Male <i>vs</i> Female	1.636	0.201	0.698	5.518
Age (yr), < 60 <i>vs</i> ≥ 60	0.063	0.801	0.357	2.218
Smoking No <i>vs</i> Yes	0.880	0.348	0.529	6.077
Preoperative CEA (ng/mL) < 5 <i>vs</i> ≥ 5	1.188	0.276	0.603	5.904
Preoperative CA199 (ng/mL) < 9 <i>vs</i> ≥ 9	2.765	0.096	0.869	5.541
Preoperative CA724 (ng/mL) < 2 <i>vs</i> ≥ 2	5.461	0.019	1.232	10.783
Granulocyte absolute value, < 2.2 <i>vs</i> ≥ 2.2	0.004	0.951	0.285	3.797
D-dimer < 0.21 <i>vs</i> ≥ 0.21	1.398	0.237	0.651	5.652
Preoperative hemoglobin < 132 <i>vs</i> ≥ 132	0.437	0.508	0.249	1.992
Tumor size (cm), < 3 <i>vs</i> ≥ 3	2.090	0.148	0.185	1.290
Vascular invasion, No <i>vs</i> Yes	8.461	0.004	2.358	81.596
Tumor location, Rectum <i>vs</i> Colon	0.264	0.607	0.485	3.444
Differentiation degree, High/moderate <i>vs</i> Low	4.204	0.040	1.057	11.956
Tumor general type, Non-ulcer <i>vs</i> Ulcer	0.686	0.407	0.556	4.239
Tissue type, Non-adenocarcinoma <i>vs</i> Adenocarcinoma	0.897	0.344	0.043	2.989

**Figure 1** Kaplan-Meier curve of lymph node metastasis in T1-stage colorectal cancer patients. OS of T1-stage CRC patients without lymph node metastasis (blue) and those with lymph node metastasis (red) was compared based on Kaplan-Meier curves and log-rank test.

node metastasis group was lower than that of patients in the non-lymph node metastasis group (Figure 1).

Cox regression analysis of correlation between clinicopathological parameters and 5-year OS

The multivariate survival analysis showed that preoperative CA199 level and lymph node metastasis (RR = 5.117, $P < 0.05$, 95%CI: 0.058-0.815) were associated with 5-year OS ($P < 0.05$ for all, Table 4). In contrast, gender, age, smoking status, preoperative CEA level, preoperative CA724 level, absolute granulocyte count, D-dimer value, preoperative hemoglobin level, tumor location, tumor size, general tumor type, tissue type, vascular invasion, and degree of differentiation were not associated with 5-year OS ($P > 0.05$ for all).

DISCUSSION

CRC is the third most common cancer and the third leading cause of cancer-related death worldwide^[10]. The

5-year OS rate of patients with colon cancer is 64.9% and is 66.5% for those with rectal cancer. T1 stage is generally early-stage CRC and has a good prognosis, but if lymph node metastasis occurs, the prognosis is usually poor. Therefore, lymph node metastasis has garnered increased attention in recent years. According to previous studies, the proportion of lymph node metastasis in patients with T1-stage CRC was reported to be 5.6% and 5.5%, which is relatively low^[11,12]. In this study, the proportion of lymph node metastasis in patients with T1-stage CRC was 8.41%. The factors that affect lymph node metastasis of T1-stage CRC are multifaceted and are also interrelated with each other. Lymph node metastasis is the main basis for clinic pathological staging of CRC for the prediction of prognosis of patients and for the determination of the appropriate regimen of postoperative adjuvant therapy. Therefore, it is necessary to study the risk factors that are correlated with lymph node metastasis of CRC, as well as their influence on the prognosis of T1-stage CRC^[13-15].

Some studies have reported that tumor markers had certain clinical value in the detection of postoperative recurrence and metastasis of CRC as well as in the judgment of prognosis^[16-18]. In our study, univariate analysis showed that preoperative CEA, preoperative CA199, and preoperative CA724 were associated with lymph node metastasis, while multivariate analysis showed that preoperative CA724 was an independent risk factor for lymph node metastasis. CA724 has been reported to be a marker for gastrointestinal and ovarian cancers and was shown to be a better indicator for the diagnosis of gastric cancer compared with the levels of CA199 and CEA. Our study found that the CA724 level was a good indicator of lymph node metastasis, which has not been previously reported in T1-stage CRC.

Previous studies have reported that the degree of differentiation of tumor cells in rectal cancer was

Table 3 Univariate analysis of correlation between clinicopathological parameters and 5-year overall survival

Clinicopathological characteristic	<i>n</i>	OS rate	χ^2	<i>P</i> value
Gender			1.225	0.268
Male	172	90.90%		
Female	149	90.10%		
Age (yr)			6.103	0.013
≥ 60	174	86.50%		
< 60	147	95.50%		
Smoking			0.429	0.513
No	279	91.00%		
Yes	42	87.50%		
Preoperative CEA (ng/mL)			13.594	0.000
< 5	284	92.70%		
≥ 5	37	78.40%		
Preoperative CA199 (ng/mL)			7.229	0.007
< 9	173	94.70%		
≥ 9	148	85.70%		
Preoperative CA724 (ng/mL)			0.012	0.912
< 2	163	87.40%		
≥ 2	158	93.20%		
Granulocyte absolute value			1.613	0.204
< 2.2	32	85.00%		
≥ 2.2	289	91.00%		
D-dimer			0.001	0.979
< 0.21	158	88.80%		
≥ 0.21	163	91.90%		
Preoperative hemoglobin			0.907	0.341
< 132	154	89.10%		
≥ 132	167	91.70%		
Vascular invasion			12.955	0.000
No	313	91.60%		
Yes	8	40.00%		
Tumor location			1.121	0.290
Rectum	170	89.80%		
Colon	151	91.90%		
Tumor size (cm)			0.210	0.647
< 3	190	90.00%		
≥ 3	131	91.20%		
Differentiation degree			6.825	0.009
High/moderate	307	91.30%		
Low	14	78.60%		
Tumor general type			3.149	0.207
Protruded	228	91.80%		
Infiltration	10	100.00%		
Ulcer	83	86.20%		
Tumor tissue type			1.828	0.176
Non-adenocarcinoma	9	75.00%		
Adenocarcinoma	312	91.30%		
Lymph node metastasis			24.180	0.000
No	294	93.20%		
Yes	27	65.20%		

closely related to lymph node metastasis^[19,20]. Our study demonstrated that the degree of differentiation was an independent risk factor for lymph node metastasis of T1-stage CRC. The reason for this may be that when the degree of differentiation is relatively high, the tumor cells are still in a more primitive stage, and the possibility that they may invade the lymph nodes is much lower. Poorly differentiated or undifferentiated carcinomas have a strong ability to invade the surrounding tissues, especially the lymphatic vessels. Derwinger *et al.*^[21] showed that the degree of differentiation of CRC was significantly associated with lymph node metastasis. In our study,

the rates of lymph node metastasis in patients with highly/moderately and poorly differentiated T1-stage CRC were 7.5% and 28.6%, respectively. In addition, univariate survival analysis showed that the degree of tumor differentiation was a prognostic factor in patients with T1-stage CRC.

Most studies have reported that vascular invasion was an essential risk factor for lymph node metastasis in CRC^[22,23]. Similarly, our study verified that vascular invasion was a positive independent risk factor for lymph node metastasis in T1-stage CRC^[23]. Univariate survival analysis showed that vascular invasion was associated with the 5-year OS of patients with T1-

Table 4 COX regression analysis of correlation between clinicopathological parameters and 5-year overall survival

	RR	P value	95%CI	
			Lower bound	Upper bound
Gender, Male <i>vs</i> Female	1.784	0.182	0.695	6.816
Age (yr), < 60 <i>vs</i> ≥ 60	3.805	0.051	0.995	9.034
Smoking, No <i>vs</i> Yes	0.590	0.442	0.413	7.565
Preoperative CEA, (ng/mL), < 5 <i>vs</i> ≥ 5	1.121	0.290	0.580	6.206
Preoperative CA199, (ng/mL), < 9 <i>vs</i> ≥ 9	6.452	0.011	1.411	14.481
Preoperative CA724, (ng/mL), < 2 <i>vs</i> ≥ 2	0.935	0.333	0.201	1.725
Granulocyte absolute value, < 2.2 <i>vs</i> ≥ 2.2	0.040	0.841	0.171	8.761
D-dimer, < 0.21 <i>vs</i> ≥ 0.21	2.373	0.123	0.777	8.217
Preoperative hemoglobin, < 132 <i>vs</i> ≥ 132	0.577	0.448	0.198	2.042
Tumor size (cm), < 3 <i>vs</i> ≥ 3	0.581	0.446	0.261	21.193
Vascular invasion, No <i>vs</i> Yes	0.343	0.558	0.468	4.076
Tumor location, Rectum <i>vs</i> Colon	0.210	0.647	0.310	2.068
Differentiation degree, High/moderate <i>vs</i> Low	1.031	0.310	0.435	13.792
Tumor general type, Ulcer <i>vs</i> Non-ulcer	2.338	0.126	0.811	5.471
Tumor tissue type, Non-adenocarcinoma <i>vs</i> Adenocarcinoma	0.783	0.376	0.068	2.755
Lymph node metastasis, No <i>vs</i> Yes	5.328	0.021	1.264	17.592

stage CRC. However, according to the multivariate analysis, no correlation was observed between lymph node metastasis and the 5-year OS in T1-stage CRC, which may have been due to the limited case number.

In clinical practice, lymph node metastasis is a significant indicator of clinical evaluation of rectal cancer recurrence and the survival of patients, and is also the primary method used to determine the therapeutic schedule in patients with rectal cancer^[24-27]. When the tumor is confined to the mucosal layer, no lymph node metastasis occurs because the layer has no lymphatic vessels. When lymphatic vessels are distributed in the submucosa, lymph node metastasis is likely to occur when the tumor invades the submucosa. When the tumor invades the deep intestinal wall, the lymph node metastasis rate will increase significantly^[28,29]. In our study, the lymph node metastasis rate of this group of patients with T1-stage CRC was 8.41%, which is mostly consistent with previous reports^[7,8]. In this study, the survival analysis of T1-stage CRC patients showed that patients without lymph node metastasis had a significantly higher 5-year survival rate than those with lymph node metastasis. Furthermore, our study verified that lymph node metastasis was an independent prognostic factor in patients with T1-stage CRC, which is also consistent with previous reports^[30]. With the development of several new technologies, such as endoscopic mucosal resection, endoscopic submucosal dissection, and transanal endoscopic microsurgery, studies on local resection for the treatment of early rectal cancer have gradually increased^[31-33]. The biggest drawback of local resection is its failure to dissect the lymph nodes in relevant drainage areas. Left metastatic lymph nodes are an important reason for postoperative recurrence, which is also the reason why caution should be taken if local resection is selected^[34-36]. Consequently, if it is not clear whether preoperative lymph node metastasis is present in T1-stage CRC, radical surgery may be the most suitable choice. Moreover, the intraoperative

dissection of lymph nodes should be standardized.

In conclusion, through statistical analysis, we verified that the occurrence rate of T1 stage out of all the cases of CRC was 3.17%; the lymph node metastasis rate was 8.41%, and the non-lymph node metastasis rate was 91.59%. Preoperative serum CA724 level, vascular invasion, and degree of differentiation were independent risk factors for lymph node metastasis in patients with T1-stage CRC. Lymph node metastasis was an essential prognostic factor in patients with T1-stage CRC. An accurate assessment of lymph node metastasis status is essential for decision-making regarding effective intraoperative therapeutic strategies for T1-stage CRC.

ARTICLE HIGHLIGHTS

Research background

Lymph node metastasis is the primary type of metastasis seen in advanced colorectal cancer (CRC). The occurrence rate of T1-stage CRC has been reported to be approximately 3.51%^[5,6]. When the tumor is completely removed, patients with T1-stage CRC generally have a good prognosis. However, since lymph node metastasis rarely occurs in T1-stage CRC, lymph node metastasis is often overlooked during the process of diagnosis and treatment. Nevertheless, lymph node metastasis is one of the most essential prognostic factors. In this study, we explored the features and prognostic value of lymph node metastasis, which will provide a theoretical basis for more effective treatment of patients with T1-stage CRC.

Research motivation

The main topic of this study is the exploration of whether lymph node metastasis in patients with T1-stage CRC is valuable for patient survival in multiple centers in China. The key is to find the risk factors for lymph node metastasis of CRC. The significance is the confirmation of the prognostic value of lymph node metastasis in patients with T1-stage CRC.

Research objectives

Studies have reported that lymph node metastasis is an essential prognostic factor for patients with CRC and that lymph node metastasis seldom occurs in T1-stage CRC. However, the definitive prognostic value of lymph node metastasis of T1-stage CRC remains elusive. The main objective of this study was to explore the features and prognostic value of lymph node metastasis in patients with T1-stage CRC.

Research methods

The current research was a case-control study.

Research results

The occurrence rate of T1 stage CRC was 3.17% (321/10,132); of these cases, the lymph node metastasis rate was 8.41% (27/321), and the non-lymph node metastasis rate was 91.59% (294/321). Univariate analysis showed that preoperative serum CEA, preoperative serum CA199, preoperative serum CA724, vascular invasion, and degree of differentiation were associated with lymph node metastasis in T1-stage CRC. Multivariate analysis indicated that preoperative serum CA724, vascular invasion, and degree of differentiation were closely related to lymph node metastasis. Log-rank survival analysis showed that age, preoperative serum CEA, preoperative serum CA199, vascular invasion, degree of differentiation, and lymph node metastasis were prognostic factors for 5-year OS. COX regression analysis demonstrated that preoperative serum CA199 and lymph node metastasis were independent prognostic factors for 5-year OS of patients with T1-stage CRC.

Research conclusions

The morbidity of T1-stage CRC was 3.17% out of all cases of CRC. Preoperative serum CA724, vascular invasion, and degree of differentiation were independent risk factors for lymph node metastasis of T1-stage CRC. Lymph node metastasis was an independent prognostic factor of OS in patients with T1-stage CRC.

Research perspectives

T1-stage CRC is generally regarded as the early stage, easily leading to the neglect of metastasis, especially lymph node metastasis. However, the prognosis of a little part of these cases (8.41%) with lymph node metastasis will be much poorer than those without. We also analysed high risk factors of lymph node metastasis of T1-stage CRC patients. Therefore, we must pay enough attention to lymph node metastasis status of T1-stage CRC patients to guide clinic therapy. Future studies should be focused on greater verifying study to expand further clinical samples. In addition, the mechanistic study of lymph node metastasis in T1-stage CRC patients should be further explored. Multi-center prospective cohort clinical studies will be needed to further validate the conclusion. Moreover, high-throughput transcriptome or proteome screening technology will be necessary for analysing the regulators of lymph node metastasis in T1-stage CRC patients in the future.

REFERENCES

- 1 Siegel RL, Miller KD, Fedewa SA, Ahnen DJ, Meester RGS, Barzi A, Jemal A. Colorectal cancer statistics, 2017. *CA Cancer J Clin* 2017; **67**: 177-193 [PMID: 28248415 DOI: 10.3322/caac.21395]
- 2 Chen W, Zheng R, Baade PD, Zhang S, Zeng H, Bray F, Jemal A, Yu XQ, He J. Cancer statistics in China, 2015. *CA Cancer J Clin* 2016; **66**: 115-132 [PMID: 26808342 DOI: 10.3322/caac.21338]
- 3 Zhu J, Tan Z, Hollis-Hansen K, Zhang Y, Yu C, Li Y. Epidemiological Trends in Colorectal Cancer in China: An Ecological Study. *Dig Dis Sci* 2017; **62**: 235-243 [PMID: 27796769 DOI: 10.1007/s10620-016-4362-4]
- 4 Imai H, Sawada K, Sato A, Nishi K, Sasaki T, Takahashi T, Ohori H. [Complete resection of liver metastases of colorectal cancer after high efficacy bevacizumab, S-1, and CPT -11 combination chemotherapy]. *Gan To Kagaku Ryoho* 2015; **42**: 101-104 [PMID: 25596689]
- 5 Iida S, Hasegawa H, Okabayashi K, Moritani K, Mukai M, Kitagawa Y. Risk factors for postoperative recurrence in patients with pathologically T1 colorectal cancer. *World J Surg* 2012; **36**: 424-430 [PMID: 22187130 DOI: 10.1007/s00268-011-1378-y]
- 6 Kobayashi H, Mochizuki H, Morita T, Kotake K, Teramoto T, Kameoka S, Saito Y, Takahashi K, Hase K, Oya M, Maeda K, Hirai T, Kameyama M, Shirouzu K, Sugihara K. Characteristics of recurrence after curative resection for T1 colorectal cancer: Japanese multicenter study. *J Gastroenterol* 2011; **46**: 203-211 [PMID: 21152938 DOI: 10.1007/s00535-010-0341-2]
- 7 Chok KS, Law WL. Prognostic factors affecting survival and recurrence of patients with pT1 and pT2 colorectal cancer. *World J Surg* 2007; **31**: 1485-1490 [PMID: 17510767 DOI: 10.1007/s00268-007-9089-0]
- 8 Gao C, Li JT, Fang L, Wen SW, Zhang L, Zhao HC. Pre-operative predictive factors for intra-operative pathological lymph node metastasis in rectal cancers. *Asian Pac J Cancer Prev* 2013; **14**: 6293-6299 [PMID: 24377520]
- 9 Zheng CX, Zhan WH, Zhao JZ, Zheng D, Wang DP, He YL, Zheng ZQ. The prognostic value of preoperative serum levels of CEA, CA19-9 and CA72-4 in patients with colorectal cancer. *World J Gastroenterol* 2001; **7**: 431-434 [PMID: 11819806 DOI: 10.3748/wjg.v7.i3.431]
- 10 Siegel R, Ward E, Brawley O, Jemal A. Cancer statistics, 2011: the impact of eliminating socioeconomic and racial disparities on premature cancer deaths. *CA Cancer J Clin* 2011; **61**: 212-236 [PMID: 21685461 DOI: 10.3322/caac.20121]
- 11 Wada H, Shiozawa M, Katayama K, Okamoto N, Miyagi Y, Rino Y, Masuda M, Akaike M. Systematic review and meta-analysis of histopathological predictive factors for lymph node metastasis in T1 colorectal cancer. *J Gastroenterol* 2015; **50**: 727-734 [PMID: 25725617 DOI: 10.1007/s00535-015-1057-0]
- 12 Caputo D, Caricato M, La Vaccara V, Taffon C, Capolupo GT, Coppola R. T1 colorectal cancer: poor histological grading is predictive of lymph-node metastases. *Int J Surg* 2014; **12**: 209-212 [PMID: 24378911 DOI: 10.1016/j.ijsu.2013.12.012]
- 13 Bosch SL, Teerenstra S, de Wilt JH, Cunningham C, Nagtegaal ID. Predicting lymph node metastasis in pT1 colorectal cancer: a systematic review of risk factors providing rationale for therapy decisions. *Endoscopy* 2013; **45**: 827 [PMID: 23884793 DOI: 10.1055/s-0033-1344238]
- 14 Frattini M, Balestra D, Suardi S, Oggionni M, Alberici P, Radice P, Costa A, Daidone MG, Leo E, Pilotti S, Bertario L, Pierotti MA. Different genetic features associated with colon and rectal carcinogenesis. *Clin Cancer Res* 2004; **10**: 4015-4021 [PMID: 15217933 DOI: 10.1158/1078-0432.CCR-04-0031]
- 15 Kawachi H, Eishi Y, Ueno H, Nemoto T, Fujimori T, Iwashita A, Ajioka Y, Ochiai A, Ishiguro S, Shimoda T, Mochizuki H, Kato Y, Watanabe H, Koike M, Sugihara K. A three-tier classification system based on the depth of submucosal invasion and budding/sprouting can improve the treatment strategy for T1 colorectal cancer: a retrospective multicenter study. *Mod Pathol* 2015; **28**: 872-879 [PMID: 25720321 DOI: 10.1038/modpathol.2015.36]
- 16 Bramsen JB, Rasmussen MH, Ongen H, Mattesen TB, Ørntoft MW, Árnadóttir SS, Sandoval J, Laguna T, Vang S, Øster B, Lamy P, Madsen MR, Laurberg S, Esteller M, Dermitzakis ET, Ørntoft TF, Andersen CL. Molecular-Subtype-Specific Biomarkers Improve Prediction of Prognosis in Colorectal Cancer. *Cell Rep* 2017; **19**: 1268-1280 [PMID: 28494874 DOI: 10.1016/j.celrep.2017.04.045]
- 17 Qian Z, Zhang G, Song G, Shi J, Gong L, Mou Y, Han Y. Integrated analysis of genes associated with poor prognosis of patients with colorectal cancer liver metastasis. *Oncotarget* 2017; **8**: 25500-25512 [PMID: 28424419 DOI: 10.18632/oncotarget.16064]
- 18 Huang Y, Li Y, He F, Wang S, Li Y, Ji G, Liu X, Zhao Q, Li J. Metastasis-associated protein 3 in colorectal cancer determines tumor recurrence and prognosis. *Oncotarget* 2017; **8**: 37164-37171 [PMID: 28418887 DOI: 10.18632/oncotarget.16332]
- 19 Choi Y, Roh MS, Hong YS, Lee HS, Hur WJ. Interleukin-24 is correlated with differentiation and lymph node numbers in rectal cancer. *World J Gastroenterol* 2011; **17**: 1167-1173 [PMID: 21448421 DOI: 10.3748/wjg.v17.i9.1167]
- 20 Hahn-Strömberg V, Askari S, Befekadu R, Matthiessen P, Karlsson S, Nilsson TK. Polymorphisms in the CLDN1 and CLDN7 genes are related to differentiation and tumor stage in colon carcinoma. *APMIS* 2014; **122**: 636-642 [PMID: 24479816 DOI: 10.1111/apm.12211]
- 21 Derwinger K, Kodera K, Bexé-Lindskog E, Taflin H. Tumour differentiation grade is associated with TNM staging and the risk of node metastasis in colorectal cancer. *Acta Oncol* 2010; **49**: 57-62 [PMID: 20001500 DOI: 10.3109/02841860903334411]
- 22 van Wyk HC, Roxburgh CS, Horgan PG, Foulis AF, McMillan DC. The detection and role of lymphatic and blood vessel invasion

- in predicting survival in patients with node negative operable primary colorectal cancer. *Crit Rev Oncol Hematol* 2014; **90**: 77-90 [PMID: 24332522 DOI: 10.1016/j.critrevonc.2013.11.004]
- 23 **Mou S**, Soetikno R, Shimoda T, Rouse R, Kaltenbach T. Pathologic predictive factors for lymph node metastasis in submucosal invasive (T1) colorectal cancer: a systematic review and meta-analysis. *Surg Endosc* 2013; **27**: 2692-2703 [PMID: 23392988 DOI: 10.1007/s00464-013-2835-5]
 - 24 **Okugawa Y**, Inoue Y, Tanaka K, Toiyama Y, Shimura T, Okigami M, Kawamoto A, Hiro J, Saigusa S, Mohri Y, Uchida K, Kusunoki M. Loss of the metastasis suppressor gene KiSS1 is associated with lymph node metastasis and poor prognosis in human colorectal cancer. *Oncol Rep* 2013; **30**: 1449-1454 [PMID: 23784200 DOI: 10.3892/or.2013.2558]
 - 25 **Huh JW**, Kim HC, Kim SH, Park YA, Cho YB, Yun SH, Lee WY, Chun HK. Mismatch repair system and p53 expression in patients with T1 and T2 colorectal cancer: predictive role of lymph node metastasis and survival. *J Surg Oncol* 2014; **109**: 848-852 [PMID: 24623275 DOI: 10.1002/jso.23592]
 - 26 **Wada H**, Shiozawa M, Sugano N, Morinaga S, Rino Y, Masuda M, Akaike M, Miyagi Y. Lymphatic invasion identified with D2-40 immunostaining as a risk factor of nodal metastasis in T1 colorectal cancer. *Int J Clin Oncol* 2013; **18**: 1025-1031 [PMID: 23114785 DOI: 10.1007/s10147-012-0490-9]
 - 27 **Ishihara S**, Kawai K, Tanaka T, Kiyomatsu T, Hata K, Nozawa H, Morikawa T, Watanabe T. Oncological Outcomes of Lateral Pelvic Lymph Node Metastasis in Rectal Cancer Treated With Preoperative Chemoradiotherapy. *Dis Colon Rectum* 2017; **60**: 469-476 [PMID: 28383446 DOI: 10.1097/DCR.0000000000000752]
 - 28 **Huang C**, Chen Y. Lymphangiogenesis and colorectal cancer. *Saudi Med J* 2017; **38**: 237-244 [PMID: 28251217 DOI: 10.15537/smj.2017.3.16245]
 - 29 **Haraguchi N**, Ohara N, Koseki J, Takahashi H, Nishimura J, Hata T, Mizushima T, Yamamoto H, Ishii H, Doki Y, Mori M. High expression of ADAMTS5 is a potent marker for lymphatic invasion and lymph node metastasis in colorectal cancer. *Mol Clin Oncol* 2017; **6**: 130-134 [PMID: 28123746 DOI: 10.3892/mco.2016.1088]
 - 30 **Akagi Y**, Adachi Y, Kinugasa T, Oka Y, Mizobe T, Shirouzu K. Lymph node evaluation and survival in colorectal cancer: review of population-based, prospective studies. *Anticancer Res* 2013; **33**: 2839-2847 [PMID: 23780968]
 - 31 **De Ceglie A**, Hassan C, Mangiavillano B, Matsuda T, Saito Y, Ridola L, Bhandari P, Boeri F, Conio M. Endoscopic mucosal resection and endoscopic submucosal dissection for colorectal lesions: A systematic review. *Crit Rev Oncol Hematol* 2016; **104**: 138-155 [PMID: 27370173 DOI: 10.1016/j.critrevonc.2016.06.008]
 - 32 **Backes Y**, Moons LM, van Bergeijk JD, Berk L, Ter Borg F, Ter Borg PC, Elias SG, Geesing JM, Groen JN, Hadithi M, Hardwick JC, Kerkhof M, Mangen MJ, Straathof JW, Schröder R, Schwartz MP, Spanier BW, de Vos Tot Nederveen Cappel WH, Wolfhagen FH, Koch AD. Endoscopic mucosal resection (EMR) versus endoscopic submucosal dissection (ESD) for resection of large distal non-pedunculated colorectal adenomas (MATILDA-trial): rationale and design of a multicenter randomized clinical trial. *BMC Gastroenterol* 2016; **16**: 56 [PMID: 27229709 DOI: 10.1186/s12876-016-0468-6]
 - 33 **Zhou P**, Yao L, Qin X, Xu M, Zhong Y, Chen W. Endoscopic submucosal dissection for locally recurrent colorectal lesions after previous endoscopic mucosal resection. *Dis Colon Rectum* 2009; **52**: 305-310 [PMID: 19279438 DOI: 10.1007/DCR.0b013e318197e261]
 - 34 **Olsen S**, Jin L, Fields RC, Yan Y, Nalbantoglu I. Tumor budding in intestinal-type gastric adenocarcinoma is associated with nodal metastasis and recurrence. *Hum Pathol* 2017; **68**: 26-33 [PMID: 28428104 DOI: 10.1016/j.humpath.2017.03.021]
 - 35 **Fujita S**, Mizusawa J, Kanemitsu Y, Ito M, Kinugasa Y, Komori K, Ohue M, Ota M, Akazai Y, Shiozawa M, Yamaguchi T, Bandou H, Katsumata K, Murata K, Akagi Y, Takiguchi N, Saida Y, Nakamura K, Fukuda H, Akasu T, Moriya Y; Colorectal Cancer Study Group of Japan Clinical Oncology Group. Mesorectal Excision With or Without Lateral Lymph Node Dissection for Clinical Stage II/III Lower Rectal Cancer (JCOG0212): A Multicenter, Randomized Controlled, Noninferiority Trial. *Ann Surg* 2017; **266**: 201-207 [PMID: 28288057 DOI: 10.1097/SLA.0000000000002212]
 - 36 **Asano H**, Kojima K, Ogino N, Fukano H, Ohara Y, Shinozuka N. Postoperative recurrence and risk factors of colorectal cancer perforation. *Int J Colorectal Dis* 2017; **32**: 419-424 [PMID: 27796497 DOI: 10.1007/s00384-016-2694-3]

P- Reviewer: Barreto S, Giordano A, Su CC **S- Editor:** Chen K
L- Editor: Wang TQ **E- Editor:** Ma YJ





Published by **Baishideng Publishing Group Inc**
7901 Stoneridge Drive, Suite 501, Pleasanton, CA 94588, USA
Telephone: +1-925-223-8242
Fax: +1-925-223-8243
E-mail: bpgoffice@wjgnet.com
Help Desk: <http://www.f6publishing.com/helpdesk>
<http://www.wjgnet.com>



ISSN 1007-9327

