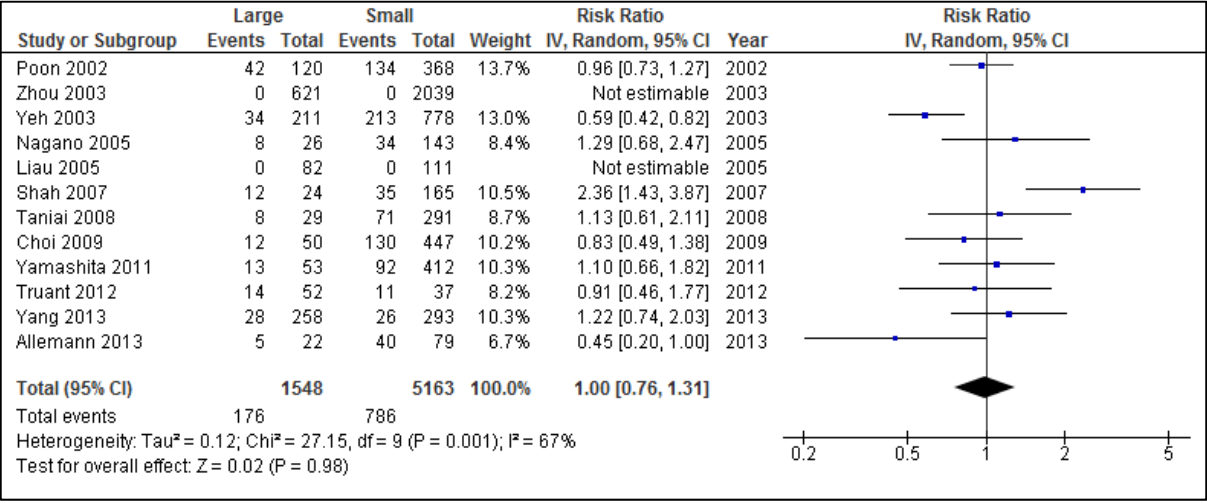
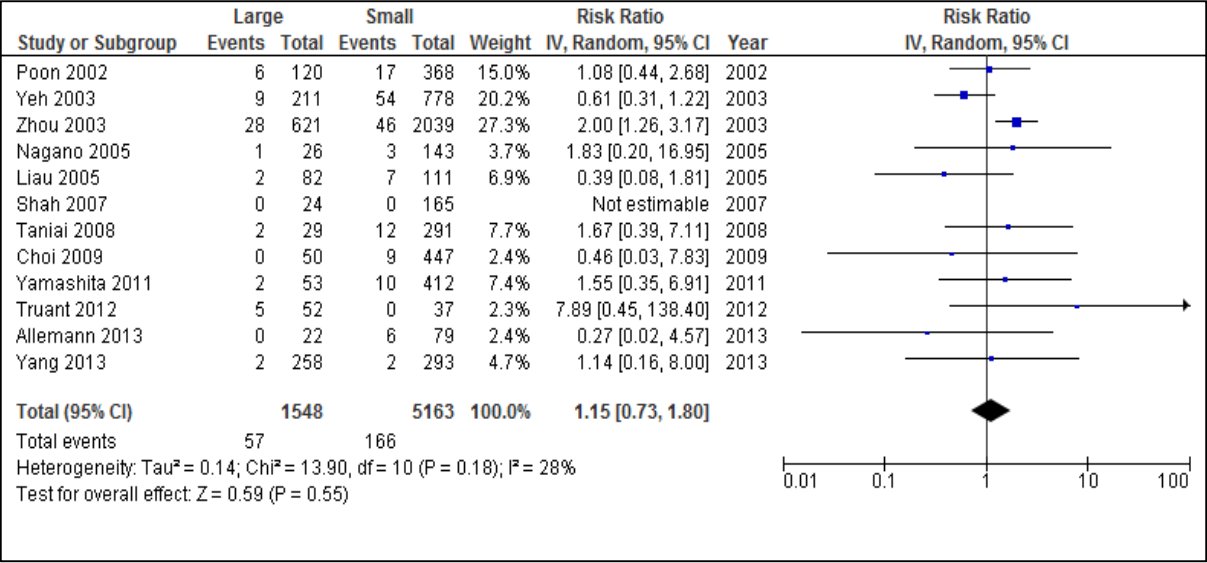


Supplementary Figure 1 Results of systematic search of the literature.

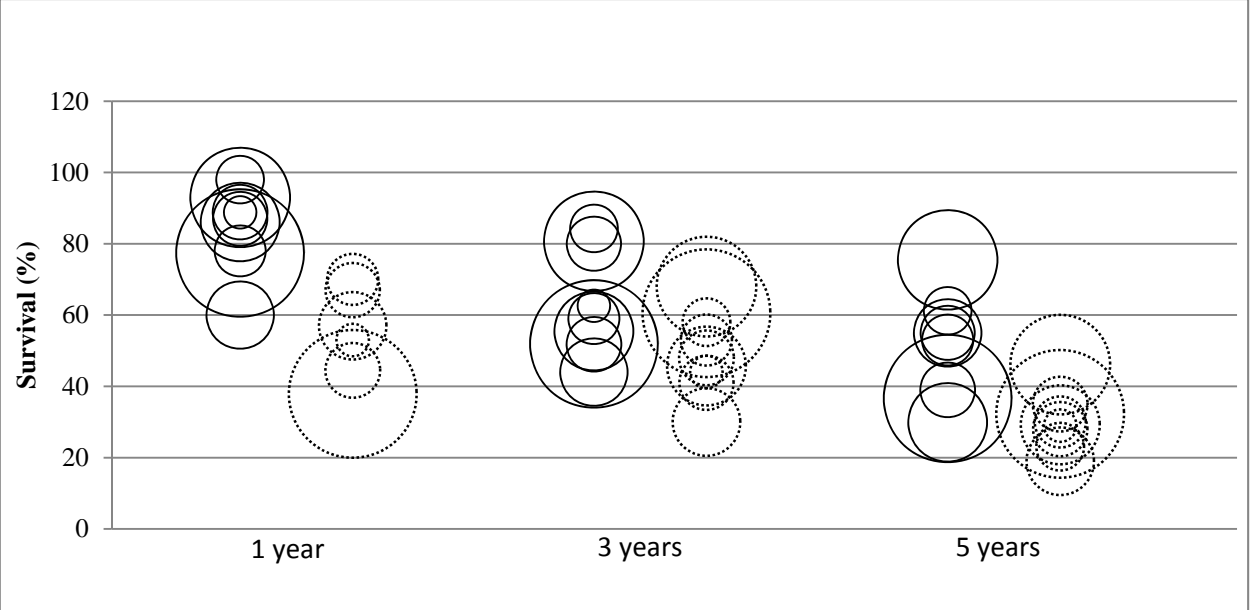
A



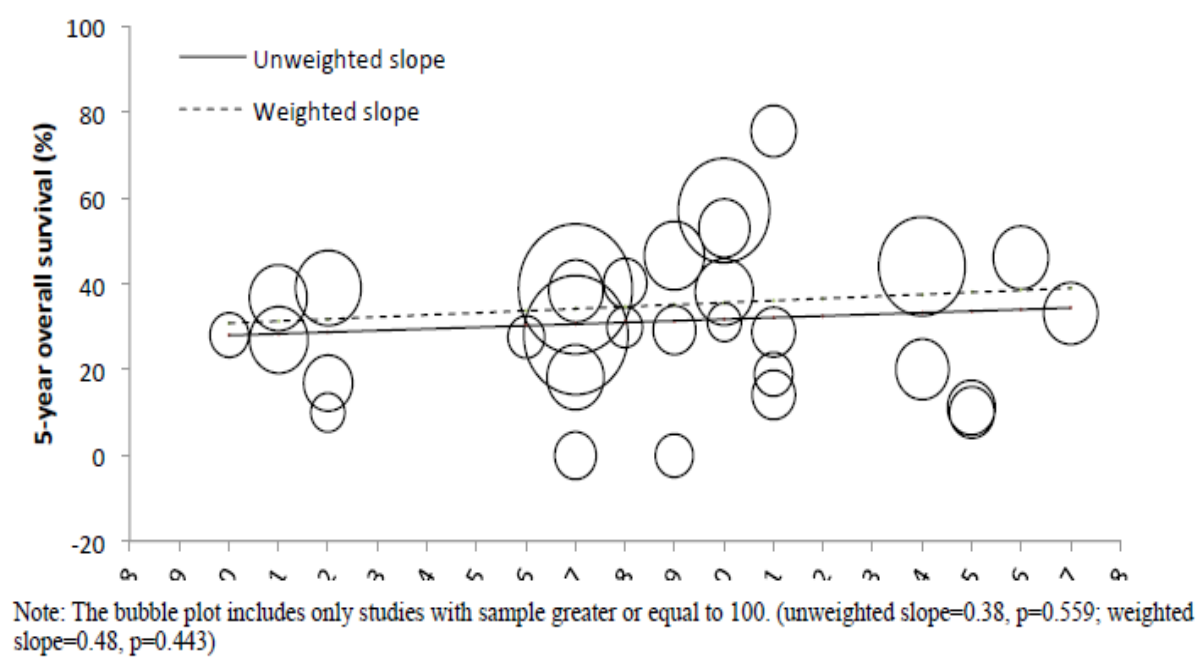
B



Supplementary Figure 2 Forest plot: Morbidity rate (A) and mortality rate (B) of large *vs* small hepatocellular carcinoma.



Supplementary Figure 3 Overall survival and disease free survival of multifocal hepatocellular carcinoma.



Supplementary Figure 4 Bubble plot of 5-year overall survival (against midpoint of recruitment period for all studies included in systematic review of outcomes of liver resection in BCLC Stage B and C, large and multifocal hepatocellular carcinoma).

Supplementary Table 1 Characteristics of patients classified as multifocal hepatocellular carcinoma

Ref.	Year	<i>n</i>	Male (%)	Cirrhosis (%)	HBV (%)	HCV (%)	Median Tumor Diameter (cm)
Choi D et al.	2007	53	42 (79.2)	28 (52.8)	22 (41.5)	3 (5.7)	3.7
Ishizawa T et al.	2008	126	97 (77.0)	103 (81.7)	12 (9.5)	93 (73.8)	3.5
Wang BW et al.	2008	112	NS	NS	NS	NS	NS
Ho MC et al.	2009	294	240 (81.6)	188 (63.9)	200 (68.0)	82 (27.9)	5
Itoh S et al. (RFA, SX)	2009	41	32 (78.0)	54 (131.7)	35 (85.4)	NS	2.9
Itoh S et al. (SX)	2009	179	146 (81.6)	NS	NS	NS	3.8
Cheung TT et al. (RFA, SX)	2010	19	17 (89.5)	NS	16 (84.2)	2 (10.5)	6
Cheung TT et al. (SX)	2010	54	43 (79.6)	NS	42 (77.8)	2 (3.7)	6
Kim PT et al.	2013	47	34 (72.3)	26 (55.3)	28 (59.6)	11 (23.4)	5.0
Goh BK et al.	2014	110	88 (80.0)	68 (61.8)	67 (60.9)	10 (9.1)	4.0
Lin et al	2014	88	82 (93.2)	69 (78.4)	81 (92.0)	3 (3.4)	7.3

RFA: Radiofrequency catheter ablation; SX: Resection.

Supplementary Table 2 Clinical outcomes of liver resection in multifocal hepatocellular carcinoma

Ref.	Recruitment Period	n	Overall Survival (%)			Median OS (mo)	Disease Survival (%)			Free	Median DFS (mo)
			1	3	5		1	3	5		
			year	years	years		year	years	years		
Choi D et al.	1999-2006	53	87.0	80.0	55.0	67.0	41.0	28.0	0.0		11.0
Ishizawa T et al.	1994-2004	126	NS	NS	NS	NS	NS	NS	NS		NS
Wang BW et al.	1990-2006	112	86.1	55.5	29.9	NS	45.7	29.2	18.4		11.0
Ho MC et al.	1981-2000	294	77.4	51.9	36.6	37.9	60.5	32.3	24.8		NS
Itoh S et al. (RFA, SX)	1997-2004	41	98.0	84.3	61.2	NS	58.0	23.1	12.8		NS
Itoh S et al. (SX)	1997-2004	179	93.0	80.7	75.5	NS	68.0	46.1	30.8		NS
Cheung TT et al. (RFA, SX)	2001-2006	19	88.8	62.6	NS	53.0	44.0	29.0	NS		8.8
Cheung TT et al. (SX)	2001-2006	54	88.9	51.8	39.0	44.5	48.0	35.0	NS		9.8
Kim PT et al.	1992 -2011	47	78.0	59.0	53.0	70.0	53.0	30.0	27.0		14.0
Goh BK et al.	2000-2011	82	60.0	44.0	55.0	57.0	30.0	19.0	14.1		NS
Lin et al	2008-2011	88	NS	NS	NS	NS	NS	NS	NS		NS

RFA: Radiofrequency catheter ablation; SX: Resection.