

Coronary-cameral fistulas in adults (first of two parts)

Salah AM Said, Rikke HM Schiphorst, Richard Derksen, Lodewijk Wagenaar

Salah AM Said, Department of Cardiology, Hospital Group Twente, 7555 DL Hengelo, The Netherlands

Rikke HM Schiphorst, Department of Cardiology, Thoraxcentrum Twente, Medisch Spectrum Twente, 7513 ER Enschede, The Netherlands

Richard Derksen, Department of Cardiology, Rijnstate Hospital, 6815 AD Arnhem, The Netherlands

Lodewijk Wagenaar, Department of Cardiology, Thoraxcentrum Twente, Medisch Spectrum Twente, 7513 ER Enschede, The Netherlands

Author contributions: Said SAM, Schiphorst RHM and Derksen R contributed to this paper; Schiphorst RHM collected the data; Derksen R provided the case with coronary cameral fistula; Said SAM prepared the manuscript and the literature review; Wagenaar L revised the manuscript; All authors have approved the final review of the paper.

Correspondence to: Salah AM Said, MD, PhD, FESC, Department of Cardiology, Hospital Group Twente, Geerdinksweg 141, 7555 DL Hengelo, The Netherlands. samsaid@home.nl
Telephone: +31-74-2905286 Fax: +31-74-2905289

Received: May 24, 2013 Revised: July 5, 2013

Accepted: August 28, 2013

Published online: September 26, 2013

Abstract

This is a case series and review of the literature adding 11 new cases. Coronary-cameral fistulas (CCFs) are infrequent anomalies which are in general co-incidentally found during diagnostic coronary angiography (CAG). To delineate the characteristics of congenital and acquired CCFs in adults, we performed a PubMed search for papers dealing with congenital or acquired CCFs in adults. Publications on coronary-vascular fistulas or paediatric subjects were not included. From the world literature, a total of 243 adult patients were identified who had congenital (65%) or acquired (35%) CCFs. In this review, which is part one of a two-part series on CCFs, we describe and discuss the congenital fistulas, give an overview on the published literature and report details of our own series of 11 patients with MMFs and solitary macro CCFs. Of the congenital group, 85% were small or large solitary macro CCFs (cut-off

1.5 mm) and 15% were coronary artery-ventricular multiple micro-fistulas (MMFs). Apical hypertrophic cardiomyopathy was reported in some of the reviewed subjects with MMFs (3/24 = 13%) but not was seen in our own series. Conservative medical management was generally the treatment of choice in congenital MMFs; prophylactic implantable cardioverter defibrillators (ICD) were implanted in 2/24 (8%) of subjects, especially when extensive micro-fistulisations were involved. None of the patients of our own series required an ICD, as the MMFs were of limited size. Congenital or acquired CCFs in adults are infrequent anomalies having a wide spectrum of clinical presentation may varies from asymptomatic to severely devastating states requiring different treatment modalities.

© 2013 Baishideng. All rights reserved.

Key words: Congenital heart defect; Congenital coronary artery-ventricular multiple micro-fistulas; Congenital coronary-cameral fistulas; Coronary angiography

Core tip: A case series and review of the literature adding 11 new cases. A total of 243 adult patients were identified who had congenital (65%) or acquired (35%) coronary-cameral fistulas. Of the congenital group, 56% were small or large solitary macro CCFs (cut-off 1.5 mm) and 9% were coronary artery-ventricular multiple micro-fistulas (MMFs). T-waves were inverted in the anterior precordial leads in 38% and apical hypertrophic cardiomyopathy was reported in 13% of the subjects. Conservative medical management was generally the treatment of choice in congenital MMFs; prophylactic implantable cardioverter defibrillators were implanted in 8% of subjects, especially when extensive micro-fistulisations were involved.

Said SAM, Schiphorst RHM, Derksen R, Wagenaar L. Coronary-cameral fistulas in adults (first of two parts). *World J Cardiol* 2013; 5(9): 329-336 Available from: URL: <http://www.wjgnet.com/1949-8462/full/v5/i9/329.htm> DOI: <http://dx.doi.org/10.4330/wjc.v5.i9.329>

INTRODUCTION

Coronary-cameral fistulas (CCFs) are defined as single or multiple, small or large direct communications that arise from one or more coronary arteries and enter into one of the four cardiac chambers (right atrium (RA) and ventricle (RV) and left atrium (LA) and ventricle (LV))^[1,2]. These arterio-venous or arterio-arterial connection, giving rise to left-right or left-left shunts, respectively. In general, CCFs are invariably congenital^[3,4], but they may also have an acquired etiology^[5] which will be addressed in the second part of this review. The congenital entity can be distinguished into coronary artery-ventricular multiple micro-fistulas^[2,6-9] or small or large solitary macro fistulas^[1], the latter making up the vast majority^[10].

Eleven adult patients with congenital multiple micro-fistulas (MMFs) and solitary macro CCFs from our own patient population are presented and discussed. The present part I of the review is confined to congenital CCFs discusses development, clinical presentation, diagnosis and therapy of this infrequent entity and finally review the published literature.

LITERATURE RESEARCH

PubMed was searched for the terms "CCFs", "congenital" and "acquired" combined with "adult". English and non-English publications were screened for both types of congenital and acquired CCFs in an adult population. The definitions used for congenital and acquired traumatic accidental or iatrogenic CCFs were adopted from previous publications^[1,11,12]. The following criteria were stipulated to include homogenous subsets for analysis: congenital solitary macro (small and large) coronary cameral fistulas or coronary artery-ventricular multiple micro-fistulas MMFs (first part) and acquired traumatic accidental, iatrogenic or spontaneous CCFs (second part). Manuscripts were checked for completeness and a meticulous search was performed for fistula termination into any of the cardiac chambers. Review subjects were tabulated according to the etiology, age, gender, clinical presentations, complications and management. Patients with coronary-vascular fistulas (CVFs) and publications considering a paediatric population were not included. Data of 11 adult patients with congenital MMFs and solitary macro CCFs are presented (Table 1).

Definitions

The definitions offered by Chiu *et al*^[1] and Gupta-Malhotra^[12] were applied.

Congenital coronary-cameral fistulas: Small or large, single or multiple fistulous connections originating from any of the coronary arteries and terminating into any of the cardiac chambers (RA, RV, LA and LV)^[1,12,13].

Solitary macro-fistulas: These are single or multiple, small (< 1.5 mm) or large fistulas (> 1.5 mm), originating mainly from the proximal segment of a coronary artery

and entering into a cardiac chamber^[1,10,11].

Coronary artery-left: Ventricular MMFs: These are multiple small channels originating from the mid or distal part of one or more coronary arteries fistulating more often into the left than the right ventricular cavity^[2,6-9].

Statistical analysis

Continuous variables are expressed as means and ranges and categorical variables were presented as percentages.

RESULTS

From the published literature, 243 adult patients were selected with 65% congenital (159/243) and 35% acquired (84/243) CCFs. Of the congenital group, 56% (135/243) were solitary macro (large or small) coronary artery-cameral fistulas and 9% (24/243) coronary artery-ventricular multiple micro-fistulas. The congenital subgroup will be presented here (first part). This review focuses on and pertains to different aspects with regard to etiology, clinical presentation and management (Tables 2 and 3).

Literature review

Congenital coronary artery-cameral fistulas: Sixty-five percent ($n = 159$) of the 243 CCFs were congenital^[9,13-32]. Fifteen percent (24/159) of whom, (15 females, 63%) had multiple micro-fistulas (MMFs). The mean age was 62.7 years (range 39-85); 9 patients had known hypertension and 2 diabetes mellitus. The origin of the fistulas was the left coronary artery (LCA) in 23, the right coronary artery (RCA) in 8 and from the left sinus of Valsalva in 1 of the fistulas. Unilateral fistulas were present in 15, bilateral fistulas in 8 and multilateral fistulas in 1 of the patients. Origin from the distal segment of the involved coronary artery was documented in 5 of the subjects. The fistulas terminated into the LV in 24 patients and into the RV in 1 patient.

The main clinical presentations were angina pectoris ($n = 10$), chest pain ($n = 10$), dyspnoea ($n = 4$), supra-ventricular tachycardia ($n = 3$), acute coronary syndrome ($n = 3$), ventricular fibrillation ($n = 1$), syncope ($n = 3$), fatigue ($n = 1$), congestive heart failure ($n = 1$), family history of sudden death ($n = 1$) and abnormal ECG ($n = 1$). Among the diagnostic modalities implemented were besides ECG and conventional coronary angiography, ambulatory Holter ECG monitoring ($n = 4$), exercise tolerance testing ($n = 7$) (1 was non-diagnostic and 6 were positive for ischemia), transthoracic echocardiography ($n = 17$), cardiovascular magnetic resonance (CMR) ($n = 4$), myocardial perfusion test ($n = 11$) (5 were negative and 6 were positive for ischemia) and multi-detector computed tomography (MDCT) ($n = 1$). Sinus rhythm was demonstrated in 22, atrial flutter in 1 and supraventricular tachycardia in 2 of the patients. Significant coronary artery disease was present in only 2 patients. Dilated and tortuous coronary arteries were reported in 6 (25%) subjects.

The major treatment modality was conservative medi-

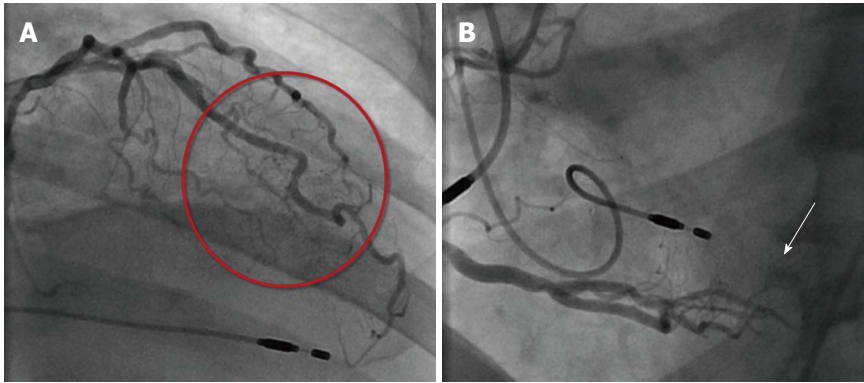


Figure 1 From the distal segment. A: The left anterior descending coronary artery/diagonal branch multiple micro-fistulas (red circle) to the left ventricle (LV) lumen are visible; B: The right coronary artery multiple fistulas (arrow) to the LV cavity. Dual endocardial pacing leads are appreciated.

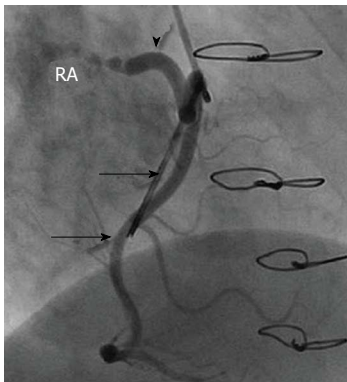


Figure 2 Dilated fistulous vessel (arrow head) originating from the proximal segment of the right coronary artery (solid arrow) and terminating into the right atrium. The mitral valve ring is visible (hollow arrow). RA: Right atrium.

cal management (CMM) with pharmacological agents including β -blockers ($n = 14$), angiotensin converting enzyme inhibitors ($n = 6$), calcium channel blockers ($n = 5$), aspirin ($n = 4$), nitrates ($n = 5$), oral anticoagulants ($n = 2$), lipid lowering agent ($n = 2$), angiotensin-receptor blocker ($n = 1$), clopidogrel ($n = 1$) and Ivabradine ($n = 1$). In two patients successful percutaneous coronary intervention (PCI) procedures for fistula-bearing and non-fistula-bearing vessels were performed for the relief of complaints. In another 2 of the 3 patients presented with syncope, with extensive MMFs, a prophylactic implantable cardioverter-defibrillator (ICD) was implanted. One patient refused further treatment. Concomitant congenital anomalies were single coronary artery ($n = 1$) and cor triatriatum ($n = 1$) as well as apical hypertrophic cardiomyopathy ($n = 3$).

Solitary macro-fistulas CCFs^[11,33-35]: A total of 135 patients with solitary congenital small or large CCFs (135/159; 85%) were reviewed and included. They were part of a previous publication^[11]. Mean age of these patients was 46.2 years (range 18-85), and 50% were females. CCFs with single (unilateral) origin were 87% and CCFs with multiple (bilateral and multilateral) in 13% of subjects. In fistulas with single or multiple origins, the share from the RCA or LCA to the fistula formation was equally distributed.

Fistula-related complications such as aneurysmal formation (18.2%), infective endocarditis (8%) and pericar-

dial effusion (2.9%) were reported. None of the patients with CCFs developed a myocardial infarction (MI). It was observed that the presence of CCFs predisposed to the development of infective endocarditis as compared to the patients with CVFs.

Current own series

There were 11 patients with congenital MMFs mean age of 61.5 years (range 44-79) (6 females) having 16 MMFs (Figure 1A and B) and 1 patient with congenital solitary *macro* CCF (Table 1) (Figure 2). The clinical presentations were chest pain ($n = 4$), angina pectoris ($n = 4$), non-ST elevation MI ($n = 1$) and dyspnoea on exertion ($n = 2$). None of the patients had an infective endocarditis. The concomitant disorders and risk factors were transient ischemic attack ($n = 2$), sick sinus syndrome ($n = 1$), aortic and mitral regurgitation ($n = 2$), previous MI ($n = 3$), diabetes mellitus ($n = 1$), chronic obstructive pulmonary disease ($n = 2$), arterial hypertension ($n = 3$), obstructive sleep apnoea syndrome ($n = 1$), glomerulonephritis ($n = 1$), coronary artery disease ($n = 3$) [coronary artery bypass grafting ($n = 1$), percutaneous coronary intervention ($n = 1$)] and aortic or mitral valve replacement ($n = 2$). The ECG depicted sinus rhythm in 10 and atrial fibrillation in 1 patient without T wave inversion in the anterior chest leads.

Transthoracic ($n = 10$) and transesophageal ($n = 2$) echocardiography were performed. Of these, 6 were normal, 1 showed left ventricular hypertrophy, 1 demonstrated moderate LV systolic function, 1 had severe mitral regurgitation and 1 showed hypokinesia of the inferior wall. Three patients underwent myocardial perfusion tests (1 was negative and 2 were positive for ischemic changes). MDCT was performed in 1 patient and revealed normal coronary arteries without identification of the MMFs. Bilateral fistulas were seen in 6 and unilateral fistulas in 5 patients. They originated from the RCA ($n = 7$) and from the left coronary artery ($n = 9$) and terminated into the left ventricle in 15 and the right ventricle in 1 of the fistulas. In 1 patient the CCF originated from the RCA and terminated into the right atrium. He underwent mitral valve repair and surgical ligation of the fistula. Significant coronary artery disease was found in 3 subjects, of whom 2 had one vessel disease (VD) and 1 had 3-VD, while 8 were free of atherosclerotic lesions.

Conservative medical management was applied in all

Table 1 Data of adult patients with congenital coronary artery-ventricular multiple micro-fistulas and solitary macro fistulas

Case Age/gender	Clinical presentation	Previous history	Concomitant disorders	MMFs fistula	ECG	Echocardiography	Myocardial perfusion test	Management
1, 44M	CP	TIA/Lyme disease	-	D-LV Unilateral 0-VD	SR	N	-	CMM
2, 73M	CP	SSS	COPD/RR/GN	D-LV dRCA-LV Bilateral 0-VD (Figure 1 A and B)	SR	N	Apical ischemic changes	CMM, DDDR
3, 62F	NSTEMI	-	-	D-LV dRCA-LV Bilateral 0-VD	SR	N	-	CMM
4, 45F	CP	-	RR	D-LV dRCA-LV Bilateral 0-VD	SR	N	-	CMM
5, 65F	AP	Old IMI/ breast carcinoma	COPD/RR/ hypothyroidism	Cx-LV dRCA-LV Bilateral 1-VD	SR old IMI	Hypokinesia inferior	Mid baso-inferior EF 60%	CMM, PCI RCA
6, 62M	AP	-	RR	D-LV Unilateral 3-VD	SR	Anterolateral hypokinesia and apical akinesia	-	CMM, CABG
7, 70F	CP	TIA	-	AL-LV Unilateral 0-VD	SR	N	Negative	CMM
8, 65M	AP	Old IMI	DM/OSAS	RCA-RV Unilateral 1-VD	SR icRBBB	N	-	CMM
9, 79F	AP	-	RR	LAD-LV RCA-LV Bilateral 0-VD	SR LVH	LVH	-	CMM
10, 64F	DOE	Old ILMI	AF/AR/epilepsy	Cx-LV RCA-LV Bilateral 0-VD	AF LBBB	Moderate LV systolic function	-	CMM, AVR
11, 52M	DOE	MR/MVP/PAF	RR	Solitary macro CCF RCA-RA	SR RBBB	Severe MR	-	MVR/PVI/SL

AR: Aortic regurgitation; AL: Anterolateral branch; AP: Angina pectoris; AVR: Aortic valve replacement; CABG: Coronary artery bypass grafting; CP: Chest pain; CMM: Conservative medical management; COPD: Chronic obstructive pulmonary disease; Cx: Circumflex coronary artery; d: Distal; D: Diagonal branch; DM: diabetes mellitus; DOE: Dyspnoea on exertion; EF: Ejection fraction; F: Female; GN: Glomerulonephritis; ic: Incomplete; ILMI: Inferolateral myocardial infarction; IMI: Inferior myocardial infarction; LAD: Left anterior descending coronary artery; LBBB: Left bundle branch block; LV: Left ventricle; LVH: Left ventricular hypertrophy; M: Male; MMFs: Coronary artery-ventricular multiple micro-fistulas; MR: Mitral regurgitation; MVP: Mitral valve plasty; MVR: Mitral valve replacement; N: Normal; NSTEMI: Non-ST elevation myocardial infarction; OSAS: Obstructive sleep apnoea syndrome; PCI: Percutaneous coronary intervention; PAF: Paroxysmal atrial fibrillation; PVI: Pulmonary vein isolation; RA: Right atrium; RBBB: Right bundle branch block; RCA: Right coronary artery; RR: Hypertension; SL: Surgical ligation; SR: Sinus rhythm; SSS: Sick sinus syndrome; TIA: Transient ischemic attack; VD: Vessel disease.

patients, which consisted of aspirin ($n = 9$), lipid lowering drug ($n = 6$), β -blocker ($n = 5$), angiotensin-receptor blocker ($n = 5$), calcium channel blocker ($n = 2$), angiotensin-converting enzyme inhibitor ($n = 3$) and an oral anticoagulant ($n = 1$).

COMMENTS

Congenital coronary cameral fistulas encompass a group of solitary macro (small or large) or multiple micro coronary cameral communications that are increasingly recognized due to sophistication and wide spread application of non-invasive and invasive angiographic imaging modalities^[10,30,36]. Both entities, solitary macro and multiple micro coronary cameral fistulas, have rarely been reported in a single symptomatic patient^[37]. Congenital CCFs may develop due to a disturbance of embryonic development with partial persistence of the embryonic intertrabecular vascular network^[9,38]. Congenital MMFs terminate mainly into the LV, and in congenital solitary macro CCFs the outflow sites are the right atrium, coronary sinus, right ventricle, left atrium and left ventricle^[11]. Congenital coronary cameral fistulas vary widely in their clinical presentation. While most patients are asymp-

tomatic or have non-specific complaints, bilateral MMFs draining into the LV may remain clinically silent^[39] or may produce diastolic murmur^[40] and diastolic volume overload, mimicking aortic valve insufficiency.

Congenital coronary artery-ventricular multiple micro-fistulas

Among the reviewed subjects, only a single asymptomatic patient with (silent MMFs) was assessed because of an abnormal ECG at rest (1/24; 4%). Moreover, the clinical diagnosis of congenital MMFs can be difficult because as laboratory tests and ECG manifestations are non-specific and the imaging modalities may sometimes be non-interpretable. Moreover, the diagnostic capabilities of CMR and MDCT have failed to demonstrate congenital MMFs^[22,24]. On the contrary, MDCT is a readily valuable tool for the detection of congenital solitary macro CCFs^[41].

ECG findings

Of great interest are the ECG findings in the 24 literature review subjects, of whom sinus rhythm was depicted in the majority of cases (23/24; 96%) and atrial flutter in a single patient (4%), T-waves were inverted in the anterior

Table 2 Results of literature review of 243 subjects with coronary-cameral fistulas (65% congenital and 35% acquired)

Condition	<i>n</i> (%) female %	Mean age /range yr	Etiology	Management
MMFs	24 (15) Female 63%	62.7 (39-85)	Congenital part I	CMM 100%
CCFs	135 (85) Female 50%	46.2 (18-85)	Congenital part I	CMM 22%, SL 56%, PTE 22%
CCFs	7 (3) Female 0%	24.1 (17-38)	Accidental part II	Emergent surgical intervention 100%
CCFs	8 (3.3) Female 38%	55.8 (46-73)	Iatrogenic (pacing) part II	CMM Spontaneous resolution
CCFs	7 (3) Female 29%	66.5 (58-75)	Iatrogenic (PCI) part II	CMM
CCFs	25 (10.3) Female 22%	50.8 (43-64)	Iatrogenic (EMB) part II	CMM Spontaneous resolution 27%
CCFs	5 (2.1) Female 20%	61 (40-78)	Iatrogenic (surgery) part II	CMM
CCFs	20 (8.2) Female unknown	45 (32-74)	Iatrogenic (SM) part II	CMM 11%, PTE 11% Spontaneous resolution 78%
CCFs	12 (5) Female 0%	61 (29-75)	Spontaneous (post-MI) part II	CMM 60%, SL 30% Spontaneous resolution 10%

CCFs: Coronary cameral fistulas; CMM: Conservative medical management; EMB: Endomyocardial biopsy; MI: Myocardial infarction; MMFs: Coronary artery-ventricular multiple micro-fistulas; PCI: Percutaneous coronary intervention; PTE: Percutaneous therapeutic embolization; SL: Surgical ligation; SM: Septal myectomy.

Table 3 Fistula characteristics in congenital and acquired coronary-cameral fistulas in adults

	Congenital CCFs (0.07%) ^[1]			Acquired CCFs			
	Solitary Macro CCFs (large ≥ 1.5 mm)	Solitary Macro CCFs (small ≤ 1.5 mm)	Multiple Micro MMFs	Post-SM	Post-EMB	Post-pacing	Blunt or sharp chest trauma
Prevalence/incidence	0.03% ^[1]	0.04% ^[1]	0.09% ^[1]	19%-23% ^[5,56]	2.8%-23.2% ^[57-60]	Unknown	Unknown
Fistula characteristics							
Origin	Proximal segment of coronary arteries		Distal segment of coronary arteries LV > RV	Septal perforator LV	RCA>LAD> Cx RV	LCA	RCA or LAD
Termination	Any cardiac chamber					Any cardiac chamber	RV or LV
Management	CMM/SL/PTE		CMM (100%) Incidentally ICD	SC (78%)/ CMM 11% PTE 11%	SC (27%)	CMM/SC	Surgical repair (100%)

CMM: Conservative medical management; EMB: Endomyocardial biopsy; LA: Left atrium; LAD: Left anterior descending artery; LCA: Left coronary artery; LV: Left ventricle; PTE: Percutaneous therapeutic embolization; RA: Right atrium; RCA: Right coronary artery; RV: Right ventricle; SC: Spontaneous closure; SL: Surgical ligation; SM: Septal myectomy; CCFs: Coronary-cameral fistulas.

precordial leads in 9 (38%) subjects, and 3 of them had LVH and apical hypertrophic cardiomyopathy (AHCM). Therefore, congenital MMFs may be included in the differential diagnosis of anterior precordial T-wave inversion. Reversible^[42] or permanent^[43] T-wave inversions either associated with multilateral or unilateral congenital MMFs have been reported. However, in our own series, none of the patients showed T-wave inversion in the precordial leads and T-wave inversions in the anterior chest wall leads were absent in patients with solitary macro CCFs.

Shunt characteristics

The magnitude of the shunt of MMFs may be considerable. In MMFs, Cottier *et al*^[44], measured a reduction of

28% of total coronary blood flow during recumbent bicycle exercise whereas greater cardiac vein flow increased by 66% in the presence of typical anginal pain and ischemic LV dysfunction. Furthermore, Meissner *et al*^[45] measured coronary artery flow velocity with intravascular Doppler guide wire for hemodynamic quantification of shunt flow, which revealed a left-to-left shunt of 23% of the total LV output. Oh *et al*^[43] assessed the hemodynamic significance of unilateral MMFs by fractional flow reserve (FFR) and found no evidence of hemodynamic compromise. These investigations may provide interesting data but were not performed either in the reviewed subjects (*n* = 24) or in our own current series (*n* = 11). Non-invasive, myocardial perfusion tests may, incidental-

ly, demonstrate reversible perfusion defects in congenital MMFs^[46] as was depicted in 2 patients of our own series and in 6 of the reviewed subjects.

Incidence of congenital MMFs

The angiographic incidence of congenital MMFs in the Chinese adult population is estimated at 0.09% with slight female predominance (58%) as was found in the review subjects (63%) and in our own series (60%). Origin from mid or distal segment of the LAD is highly prevalent, occurring in 88% of patients. Symptoms ensued in the 6th decade of life. Our findings were similar and in accordance with the findings of others^[1]. The mean age in the reviewed subjects was 62.7 years and, in our own series of 10 patients with MMFs, it was 69.1 years.

Associated disorders

Concomitant AHCM was detected in 13% of the reviewed MMFs subjects and was not observed in any of the solitary CCFs patients^[23-25]. AHCM, a variant of hypertrophic cardiomyopathy, is rare among Caucasians but more common in the Asian population, especially in the Japanese^[25]. This association between MMFs has recently been observed not only with AHCM^[47,48] but also with non-compaction cardiomyopathy (NCCM)^[49]. Alternatively, one can assume and may speculate that an early common pathway may exist, yet not detected, for their development. In addition, pre-existent congenital multilateral fistulas (from all 3 epicardial coronary arteries) have been reported in a heart transplant recipient, which were detected after transplantation during routine coronary angiography^[50].

Autopsy findings

Autopsy of patients with congenital multilateral MMFs to both ventricles depicted insignificant atherosclerotic coronary artery disease, cardiac dilatation and hypertrophy, and dilated coronary arteries with histologically, numerous small vessels of various diameters across the myocardium with patchy subendocardial fibrosis^[51,52]. This was in accordance with the necropsy findings of Honey and Lau in solitary *macro* congenital CCFs^[53,54], the only difference being the presence of a single fistulous vessel.

Congenital solitary macro coronary-cameral fistulas

On the other hand, congenital solitary *macro* coronary-cameral fistulas (small and large)^[11,33-35] showed an incidence of 0.07%. Of these, 0.03% were large and 0.04% were small CCFs^[1]. CCFs with single (unilateral) origin presented 87% and CCFs with multiple (bilateral and multilateral) origin 13% of subjects. Fistula-related complications such as aneurysmal formation (18.2%), infective endocarditis (8%) and pericardial effusion (2.9%) were reported. None of the CCFs patients developed MI, however, and subjects with CCFs were susceptible for the development of infective endocarditis compared to

the group presented with coronary-vascular fistulas^[11]. In bilateral CCFs, hemodynamic significance was assessed by FFR and ischemia was ruled out^[43]. In our patient with congenital solitary macro fistula from RCA to RA, the fistulous vessel was surgically ligated during redo of mitral valve repair for mitral valve prolapse accompanied with symptomatic severe mitral regurgitation.

Supraventricular (SV) and ventricular arrhythmias have been associated with coronary cameral fistulas (solitary or MMFs). In our own series ($n = 11$), atrial fibrillation/flutter (AF) was present in only 1 patient (10%), and AF and supraventricular tachycardia were present in 2 of the MMFs reviewed subjects (8%). However, neither ventricular arrhythmias nor infective endocarditis were reported in the MMFs subjects.

Myocardial infarction

In the absence of atherosclerosis, MI may develop in the presence of MMFs originating from all 3 coronary arteries terminating into both ventricles^[55]. One patient of our own series (1/10; 10%) sustained inferior wall MI, in which the fistula-bearing RCA was involved.

Management

In all 24 reviewed subjects, conservative medical management was conducted including β -blockers^[17], calcium channel blockers^[18] and verapamil^[19] as was previously reported^[1]. While congenital MMFs are generally treated conservatively, congenital solitary CCFs may undergo percutaneous occlusion or surgical ligation in the presence of substantial significant shunts. Only in few of the reviewed subjects, having morphologically extensive MMFs, a prophylactic ICD was implanted (8%). None of the patients in our own series required an ICD as the MMFs were not widespread.

CONCLUSION

In almost 40% of the reviewed subjects with congenital coronary artery-ventricular multiple micro-fistulas, T-wave inversion was present in the precordial leads of the electrocardiogram in association with or without apical hypertrophic cardiomyopathy. For adult patients with congenital coronary artery-ventricular multiple micro-fistulas, conservative medical management is the treatment of choice. Due to the multiplicity of the fistulas, they are inaccessible for percutaneous or surgical intervention which may be considered in large solitary coronary-cameral macro fistulas with hemodynamically significant shunts. Limited data were reported on adult patients with solitary CCFs. Within the entity of CCFs, each subtype has its own specific characteristics such as origin, termination of fistulas and treatment options. In addition, there were few reports on the implantation of an ICD in patients with extensive congenital MMFs in association with syncope.

ACKNOWLEDGEMENTS

During the preparation of the manuscript, the assistance of the librarian, Mrs. A. Geerdink, and Mr. D. Maas of hospital group Twente is gratefully acknowledged. The authors thank Prof. dr. Clemens von Birgelen, Department of Cardiology, Thoraxcentrum Twente, Medisch Spectrum Twente, Enschede, the Netherlands for his intellectual suggestions for the manuscript.

REFERENCES

- 1 Chiu CZ, Shyu KG, Cheng JJ, Lin SC, Lee SH, Hung HF, Liou JY. Angiographic and clinical manifestations of coronary fistulas in Chinese people: 15-year experience. *Circ J* 2008; **72**: 1242-1248 [PMID: 18654007 DOI: 10.1253/circj.72.1242]
- 2 Said SA, van der Werf T. Dutch survey of congenital coronary artery fistulas in adults: coronary artery-left ventricular multiple micro-fistulas multi-center observational survey in the Netherlands. *Int J Cardiol* 2006; **110**: 33-39 [PMID: 16181690 DOI: 10.1016/j.ijcard.2005.07.009]
- 3 Brito FS, Vianna CB, Caixeta AM, Rati MA, Perin MA, Ramires JA, Martinez Filho EE. Single coronary arteries: two cases with distinct and previously undescribed angiographic patterns. *J Invasive Cardiol* 1999; **11**: 430-434 [PMID: 10745567]
- 4 Reeder GS, Tajik AJ, Smith HC. Visualization of coronary artery fistula by two-dimensional echocardiography. *Mayo Clin Proc* 1980; **55**: 185-189 [PMID: 7354655]
- 5 Sgalambro A, Olivotto I, Rossi A, Nistri S, Baldini K, Baldi M, Stefano P, Antonucci D, Garbini F, Cecchi F, Yacoub MH. Prevalence and clinical significance of acquired left coronary artery fistulas after surgical myectomy in patients with hypertrophic cardiomyopathy. *J Thorac Cardiovasc Surg* 2010; **140**: 1046-1052 [PMID: 20471659 DOI: 10.1016/j.jtcvs.2010.02.020]
- 6 Chia BL, Chan AL, Tan LK, Ng RA, Chiang SP. Coronary artery-left ventricular fistula. *Cardiology* 1981; **68**: 167-179 [PMID: 7317886 DOI: 10.1159/000173278]
- 7 Nawa S, Miyachi Y, Shiba T, Toshino N, Hayashi K, Tamesue K, Yamamoto H, Ota T, Shimizu N. Clinical and angiographic analysis of congenital coronary artery fistulae in adulthood. Is there any new trend? *Jpn Heart J* 1996; **37**: 95-104 [PMID: 8632629 DOI: 10.1536/ihj.37.95]
- 8 Stierle U, Giannitsis E, Sheikhzadeh A, Potratz J. Myocardial ischemia in generalized coronary artery-left ventricular micro-fistulae. *Int J Cardiol* 1998; **63**: 47-52 [PMID: 9482144 DOI: 10.1016/S0167-5273(97)00280-5]
- 9 Cartoni D, Salvini P, De Rosa R, Cortese A, Nazzaro MS, Tanzi P. Images in cardiovascular medicine. Multiple coronary artery-left ventricle micro-fistulae and spongy myocardium: the eagerly awaited link? *Circulation* 2007; **116**: e81-e84 [PMID: 17638934 DOI: 10.1161/CIRCULATIONAHA.106.684811]
- 10 Zenooz NA, Habibi R, Mammen L, Finn JP, Gilkeson RC. Coronary artery fistulas: CT findings. *Radiographics* 2009; **29**: 781-789 [PMID: 19448115 DOI: 10.1148/rg.293085120]
- 11 Said SA. Current characteristics of congenital coronary artery fistulas in adults: A decade of global experience. *World J Cardiol* 2011; **3**: 267-277 [PMID: 21876777 DOI: 10.4330/wjc.v3.i8.267]
- 12 Gupta-Malhotra M. Coronary artery fistulas. Available from: URL: <http://emedicine.medscape.com/article/895749-overview>, 2010
- 13 Papazoglou PD, Mitsibounas D, Nanas JN. Left anterior descending coronary artery-left ventricular fistula presenting as unstable angina and syncope. *Int J Cardiol* 2004; **96**: 121-122 [PMID: 15203273 DOI: 10.1016/j.ijcard.2003.04.057]
- 14 Iadanza A, del Pasqua A, Fineschi M, Pierli C. Three-vessel left-ventricular micro-fistulization syndrome: a rare case of angina. *Int J Cardiol* 2004; **96**: 109-111 [PMID: 15203269 DOI: 10.1016/j.ijcard.2003.04.052]
- 15 Cakar MA, Tatli E. Coronary-cameral fistula with angina pectoris. *Case Rep Med* 2010; **2010**: 362532 [PMID: 21209744 DOI: 10.1155/2010/362532]
- 16 Brueck M, Bandorski D, Vogt PR, Kramer W, Heidt MC. Myocardial ischemia due to an isolated coronary fistula. *Clin Res Cardiol* 2006; **95**: 550-553 [PMID: 16830266 DOI: 10.1007/s00392-006-0418-3]
- 17 Durán A, Michelis V, Díaz P, Lujambio M, Kuster F, Lluberas R, Romero C. Evaluación de pacientes portadores de fistulas coronario-ventriculares múltiples. *Revista Médica del Uruguay* 2003; **19**: 237-241
- 18 Macfadyen RJ, Varma C, Anderson RH. Multiple microvessels extending from the coronary arteries to the left ventricle in a middle aged female presenting with ischaemic chest pain: a case report. *J Med Case Rep* 2007; **1**: 177 [PMID: 18067687 DOI: 10.1186/1752-1947-1-177]
- 19 Sambu N, Sharma R, Kalra PR. Multiple coronary to left ventricular fistulae. *Eur J Echocardiogr* 2009; **10**: 352 [PMID: 18755698 DOI: 10.1093/ejehoccard/jen229]
- 20 Jang SN, Her SH, Do KR, Kim JS, Yoon HJ, Lee JM, Jin SW. A case of congenital bilateral coronary-to-right ventricle fistula coexisting with variant angina. *Korean J Intern Med* 2008; **23**: 216-218 [PMID: 19119260 DOI: 10.3904/kjim.2008.23.4.216]
- 21 Lozano I, Batalla A, Rubin J, Avanzas P, Martin M, Moris C. Sudden death in a patient with multiple left anterior descending coronary artery fistulas to the left ventricle. *Int J Cardiol* 2008; **125**: e37-e39 [PMID: 17391787 DOI: 10.1016/j.ijcard.2006.11.247]
- 22 Uechi Y, Higa K. [Single left coronary artery with micro-fistula communicating with the left ventricle: a case report]. *J Cardiol* 2007; **50**: 199-203 [PMID: 17941196]
- 23 Hong GR, Choi SH, Kang SM, Lee MH, Rim SJ, Jang YS, Chung NS. Multiple coronary artery-left ventricular micro-fistulae in a patient with apical hypertrophic cardiomyopathy: a demonstration by transthoracic color Doppler echocardiography. *Yonsei Med J* 2003; **44**: 710-714 [PMID: 12950129]
- 24 Dresios C, Apostolakis S, Tzortzis S, Lazaridis K, Gardikiotis A. Apical hypertrophic cardiomyopathy associated with multiple coronary artery-left ventricular fistulae: a report of a case and review of the literature. *Eur J Echocardiogr* 2010; **11**: E9 [PMID: 19995797 DOI: 10.1093/ejehoccard/jep196]
- 25 Alyan O, Ozeke O, Golbasi Z. Coronary artery-left ventricular fistulae associated with apical hypertrophic cardiomyopathy. *Eur J Echocardiogr* 2006; **7**: 326-329 [PMID: 15994129 DOI: 10.1016/j.euje.2005.06.006]
- 26 Rana O, Swallow R, Senior R, Greaves K. Detection of myocardial ischaemia caused by coronary artery-left ventricular fistulae using myocardial contrast echocardiography. *Eur J Echocardiogr* 2009; **10**: 175-177 [PMID: 18682407 DOI: 10.1093/ejehoccard/jen215]
- 27 Arat N, Gurel OM, Biyikoglu FS, Duru E. Coronary artery to left ventricular fistula demonstrated by transthoracic echocardiography. *Eur J Echocardiogr* 2008; **9**: 121-122 [PMID: 17604226]
- 28 Padfield GJ. A case of coronary cameral fistula. *Eur J Echocardiogr* 2009; **10**: 718-720 [PMID: 19414488 DOI: 10.1093/ejehoccard/jep049]
- 29 Caliskan K, Balk AH, Wykrzykowska JJ, van Geuns RJ, Seruys PW. How should I treat an unusual referral for heart transplantation? *EuroIntervention* 2010; **5**: 861-865 [PMID: 20142204 DOI: 10.4244/EIJV5I7A144]
- 30 Heper G, Kose S. Increased myocardial ischemia during nitrate therapy: caused by multiple coronary artery-left

- ventricle fistulae? *Tex Heart Inst J* 2005; **32**: 50-52 [PMID: 15902822]
- 31 **Nabais S**, Salomé N, Brandão A, Simões A, Marques J, Costa J, Basto L, Costeira A, Correia A. Coexistence of coronary cameral fistulae and cor triatriatum sinister in an elderly patient. *Eur J Echocardiogr* 2008; **9**: 712-715 [PMID: 18490293 DOI: 10.1093/ejehoccard/jen140]
 - 32 **Hartmann M**, van Es J, Galjee MA, van der Burgh PH, de Bruin WI, Said SA, von Birgelen C. Cardiac imaging in a symptomatic patient with multiple coronary artery-left ventricular microfistulae. *Heart Vessels* 2007; **22**: 428-431 [PMID: 18044003 DOI: 10.1007/s00380-007-0992-y]
 - 33 **Kadir I**, Ascione R, Linter S, Bryan AJ. Intraoperative localisation and management of coronary artery fistula using transesophageal echocardiography. *Eur J Cardiothorac Surg* 1999; **16**: 364-366 [PMID: 10554861 DOI: 10.1016/S1010-7940(99)00209-2]
 - 34 **Brussee H**, Gasser R. Images in clinical medicine. Fistula connecting the left main coronary artery with the right atrium in a marathon runner. *N Engl J Med* 2002; **346**: 904 [PMID: 11907290 DOI: 10.1056/NEJMcim980664]
 - 35 **Hamada M**, Kubo H, Matsuoka H, Kokubu T, Oosuga Y, Joh T. Myocardial infarction complicating surgical repair of left coronary-right ventricular fistula in an adult. *Am J Cardiol* 1986; **57**: 372-374 [PMID: 3946242 DOI: 10.1016/0002-9149(86)90935-5]
 - 36 **Choi SI**, Kim SK, Shin JH, Lee JU, Kim KS, Lim HK, Kim JH, Lee BH. A case of coronary-artery-left ventricular microfistulae demonstrated by transthoracic Doppler echocardiography. *J Cardiovasc Ultrasound* 2006; **4**: 157-160
 - 37 **van de Water JM**, van Houwelingen KG, von Birgelen C. [Multiple rare causes of typical angina pectoris in a single patient]. *Rev Esp Cardiol* 2007; **60**: 196 [PMID: 17338884 DOI: 10.1157/13099466]
 - 38 **Black IW**, Loo CK, Allan RM. Multiple coronary artery-left ventricular fistulae: clinical, angiographic, and pathologic findings. *Cathet Cardiovasc Diagn* 1991; **23**: 133-135 [PMID: 2070401 DOI: 10.1002/ccd.1810230216]
 - 39 **Martens J**, Haseldoncks C, Van de Werf F, De Geest H. Silent left and right coronary artery - left ventricular fistulas: an unusual prominent Thebesian system. *Acta Cardiol* 1983; **38**: 139-142 [PMID: 6603087]
 - 40 **Yokawa S**, Watanabe H, Kurosaki M. Asymptomatic left and right coronary artery-left ventricular fistula in an elderly patient with a diastolic murmur only. *Int J Cardiol* 1989; **25**: 244-246 [PMID: 2807616 DOI: 10.1016/0167-5273(89)90117-4]
 - 41 **Tan KT**, Chamberlain-Webber R, McGann G. Characterisation of coronary artery fistula by multi-slice computed tomography. *Int J Cardiol* 2006; **111**: 311-312 [PMID: 16256220 DOI: 10.1016/j.ijcard.2005.07.070]
 - 42 **Jung Y**, Kim HJ, Yoon CH. Severe form of persistent thebesian veins presenting as ischemic heart disease. *Korean Circ J* 2012; **42**: 714-717 [PMID: 23170102 DOI: 10.4070/kcj.2012.42.10.714]
 - 43 **Oh JH**, Lee HW, Cha KS. Hemodynamic significance of coronary cameral fistula assessed by fractional flow reserve. *Korean Circ J* 2012; **42**: 845-848 [PMID: 23323123 DOI: 10.4070/kcj.2012.42.12.845]
 - 44 **Cottier C**, Kiowski W, von Bertrab R, Pfisterer M, Burkart F. Multiple coronary arteriocameral fistulas as a cause of myocardial ischemia. *Am Heart J* 1988; **115**: 181-184 [PMID: 3336972 DOI: 10.1016/0002-8703(88)90537-6]
 - 45 **Meissner A**, Lins M, Herrmann G, Simon R. Multiple coronary artery-left ventricular fistulae: haemodynamic quantification by intracoronary Doppler ultrasound. *Heart* 1997; **78**: 91-93 [PMID: 9290410]
 - 46 **Suchon E**, Kostkiewicz M, Szot W. Left coronary arteriovenous malformation with fistulous connections to the left and right ventricles. *Nucl Med Rev Cent East Eur* 2012; **15**: 80-82 [PMID: 23047578 DOI: 10.5603/NMR.2012.0014]
 - 47 **Yılmaz S**, Uçar FM, Gölbaş 1 Z, Tüfekçioğlu O. Coronary artery-left ventricular micro-fistulas associated with apical hypertrophic cardiomyopathy. *Anadolu Kardiyol Derg* 2012; **12**: E28 [PMID: 22728741]
 - 48 **Roubille F**, Micheau A, Vernhet-Kovacsik H. Multiple coronary-left ventricular fistulae associated with apical hypertrophic cardiomyopathy: coronary angiogram compared to coronary scan and cardiac magnetic resonance scan. *Cardiol J* 2011; **18**: 702-703 [PMID: 22113763 DOI: 10.5603/CJ.2011.0039]
 - 49 **Wilhelm J**, Heinroth K, Stoevesandt D, Werdan K, Plehn A. Non-compaction cardiomyopathy with diffuse left coronary artery fistulae as a rare cause of congestive heart failure. *Eur Heart J* 2013; **34**: 12 [PMID: 22719021 DOI: 10.1093/eurheartj/ehs178]
 - 50 **Vermeulen T**, Haine S, Paelinck BP, Rodrigus IE, Vrints CJ, Conraads VM. Coronary artery-pulmonary artery fistula in a heart-transplanted patient. *Eur J Echocardiogr* 2010; **11**: 80-81 [PMID: 19749198 DOI: 10.1093/ejehoccard/jep113]
 - 51 **Shiota K**, Kinoshita M, Kimura N, Kurosu H, Kuwahara K, Mori C. Multiple fistulae of coronary arteries to both ventricles. *Jpn Heart J* 1988; **29**: 741-746 [PMID: 3221449 DOI: 10.1536/ihj.29.741]
 - 52 **Rose AG**. Multiple coronary arterioventricular fistulae. *Circulation* 1978; **58**: 178-180 [PMID: 647882 DOI: 10.1161/01.CIR.58.1.178]
 - 53 **Honey M**. Coronary arterial fistula. *Br Heart J* 1964; **26**: 719-722 [PMID: 14213035 DOI: 10.1136/hrt.26.5.719]
 - 54 **Lau G**. Sudden death arising from a congenital coronary artery fistula. *Forensic Sci Int* 1995; **73**: 125-130 [PMID: 7797185 DOI: 10.1016/0379-0738(95)01721-T]
 - 55 **McLellan BA**, Pelikan PC. Myocardial infarction due to multiple coronary-ventricular fistulas. *Cathet Cardiovasc Diagn* 1989; **16**: 247-249 [PMID: 2706682 DOI: 10.1002/ccd.1810160408]
 - 56 **Chenzbraun A**, Pinto FJ, Meyer B, Stinson EB, Popp RL. Frequency of acquired coronary-cameral fistula after ventricular septal myectomy in hypertrophic cardiomyopathy. *Am J Cardiol* 1993; **71**: 1244-1246 [PMID: 8480661 DOI: 10.1016/0002-9149(93)90661-U]
 - 57 **Sandhu JS**, Uretsky BF, Zerbe TR, Goldsmith AS, Reddy PS, Kormos RL, Griffith BP, Hardesty RL. Coronary artery fistula in the heart transplant patient. A potential complication of endomyocardial biopsy. *Circulation* 1989; **79**: 350-356 [PMID: 2644055 DOI: 10.1161/01.CIR.79.2.350]
 - 58 **Fitchett DH**, Forbes C, Guerraty AJ. Repeated endomyocardial biopsy causing coronary arterial-right ventricular fistula after cardiac transplantation. *Am J Cardiol* 1988; **62**: 829-831 [PMID: 3048074 DOI: 10.1016/0002-9149(88)91237-4]
 - 59 **Gascuña R**, de Lombera F, Fernández S, Santos M, Delgado J, Escribano P, Gómez MA. Left circumflex coronary artery-to-left atrium fistulas detected by transesophageal echocardiography in heart transplant recipients. *Echocardiography* 2000; **17**: 443-445 [PMID: 10979018 DOI: 10.1111/j.1540-8175.2000.tb01161.x]
 - 60 **Saraiva F**, Matos V, Gonçalves L, Antunes M, Providência LA. Complications of endomyocardial biopsy in heart transplant patients: a retrospective study of 2117 consecutive procedures. *Transplant Proc* 2011; **43**: 1908-1912 [PMID: 21693299 DOI: 10.1016/j.transproceed.2011.03.010]

P- Reviewer Pauliks L S- Editor Wen LL L- Editor A
E- Editor Lu YJ





Published by **Baishideng Publishing Group Co., Limited**
Flat C, 23/F., Lucky Plaza,
315-321 Lockhart Road, Wan Chai, Hong Kong, China
Fax: +852-65557188
Telephone: +852-31779906
E-mail: bpgoffice@wjgnet.com
<http://www.wjgnet.com>

