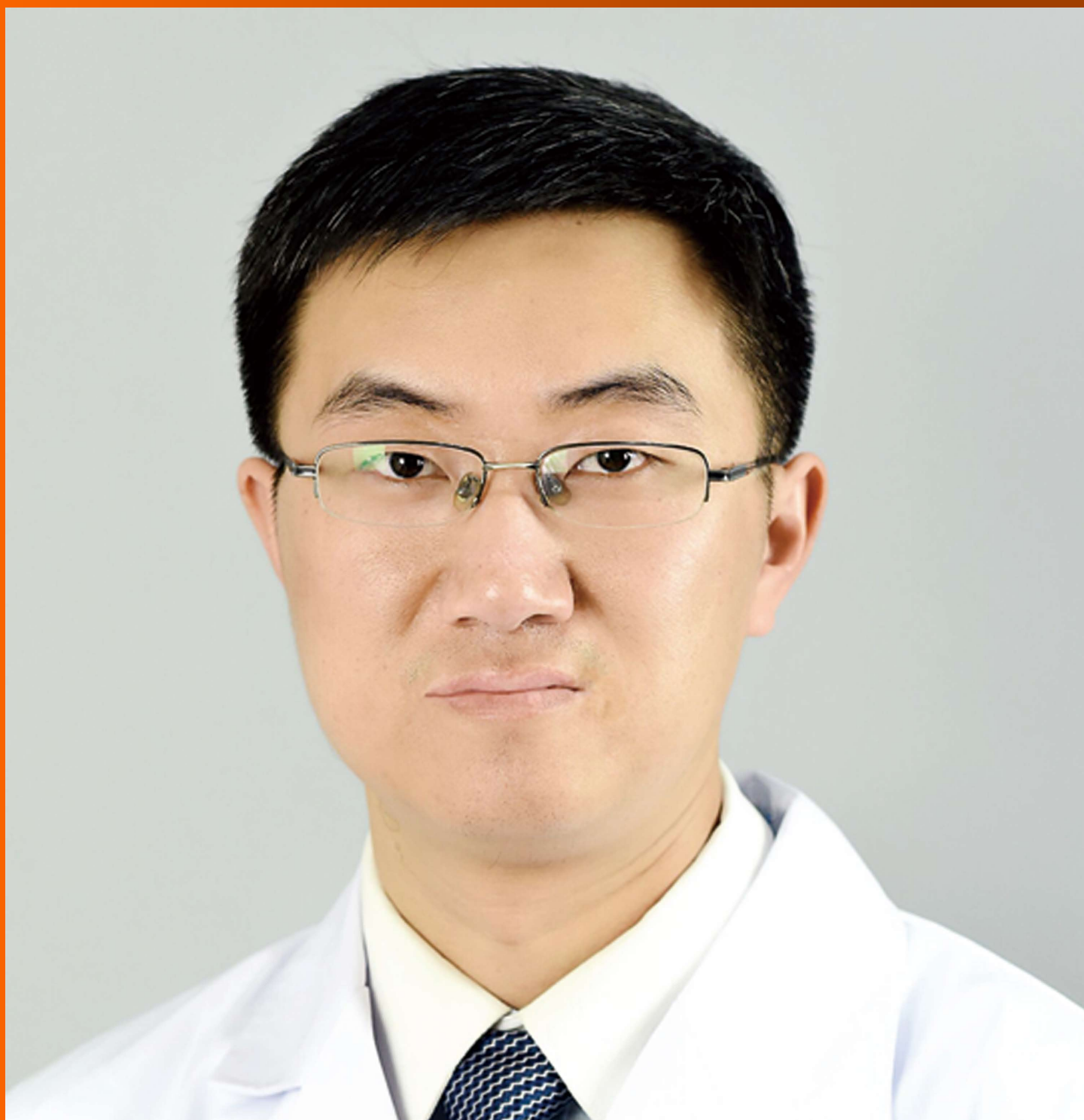


World Journal of *Clinical Cases*

World J Clin Cases 2018 June 16; 6(6): 99-142





ORIGINAL ARTICLE

Retrospective Cohort Study

- 99 Comparison of simplified and traditional pericardial devascularisation combined with splenectomy for the treatment of portal hypertension

Zhang YF, Ji H, Lu HW, Lu L, Wang L, Wang JL, Li YM

Retrospective Study

- 110 Prognostic role of alpha-fetoprotein response after hepatocellular carcinoma resection

Rungsakulkij N, Suragul W, Mingphruedhi S, Tangtawee P, Muangkaew P, Aeesoa S

CASE REPORT

- 121 T-cell/histiocyte-rich large B-cell lymphoma in a child: A case report and review of literature

Wei C, Wei C, Alhalabi O, Chen L

- 127 Elusive left ventricular thrombus: Diagnostic role of cardiac magnetic resonance imaging-A case report and review of the literature

Siddiqui I, Nguyen T, Movahed A, Kabirdas D

- 132 Intestinal pseudo-obstruction caused by herpes zoster: Case report and pathophysiology

Anaya-Prado R, Pérez-Navarro JV, Corona-Nakamura A, Anaya-Fernández MM, Anaya-Fernández R, Izaguirre-Pérez ME

- 139 Posterobasal left ventricular aneurysm after myocardial infarction with normal coronary arteries: Case-report

Kalinin RE, Suchkov IA, Mzhavanadze ND, Ncheye AF

ABOUT COVER

Editorial Board Member of *World Journal of Clinical Cases*, Xi Jin, PhD, Associate Professor, Doctor, Department of Gastroenterology, Institution of Gastroenterology, the First Affiliated Hospital, School of Medicine Zhejiang University, Zhejiang Province, Hangzhou 310003, China

AIM AND SCOPE

World Journal of Clinical Cases (*World J Clin Cases*, *WJCC*, online ISSN 2307-8960, DOI: 10.12998) is a peer-reviewed open access academic journal that aims to guide clinical practice and improve diagnostic and therapeutic skills of clinicians.

The primary task of *WJCC* is to rapidly publish high-quality Autobiography, Case Report, Clinical Case Conference (Clinicopathological Conference), Clinical Management, Diagnostic Advances, Editorial, Field of Vision, Frontier, Medical Ethics, Original Articles, Clinical Practice, Meta-Analysis, Minireviews, Review, Therapeutics Advances, and Topic Highlight, in the fields of allergy, anesthesiology, cardiac medicine, clinical genetics, clinical neurology, critical care, dentistry, dermatology, emergency medicine, endocrinology, family medicine, gastroenterology and hepatology, geriatrics and gerontology, hematology, immunology, infectious diseases, internal medicine, obstetrics and gynecology, oncology, ophthalmology, orthopedics, otolaryngology, pathology, pediatrics, peripheral vascular disease, psychiatry, radiology, rehabilitation, respiratory medicine, rheumatology, surgery, toxicology, transplantation, and urology and nephrology.

INDEXING/ABSTRACTING

World Journal of Clinical Cases is now indexed in PubMed, PubMed Central, Science Citation Index Expanded (also known as SciSearch®), and Journal Citation Reports/Science Edition.

EDITORS FOR THIS ISSUE

Responsible Assistant Editor: *Xiang Li*
Responsible Electronic Editor: *Wen-Wen Tan*
Proofing Editor-in-Chief: *Lian-Sheng Ma*

Responsible Science Editor: *Fang-Fang Ji*
Proofing Editorial Office Director: *Jin-Lei Wang*

NAME OF JOURNAL
World Journal of Clinical Cases

ISSN
ISSN 2307-8960 (online)

LAUNCH DATE
April 16, 2013

FREQUENCY
Monthly

EDITORS-IN-CHIEF
Sandro Vento, MD, Department of Internal Medicine, University of Botswana, Private Bag 00713, Gaborone, Botswana

EDITORIAL BOARD MEMBERS
All editorial board members resources online at <http://www.wjgnet.com/2307-8960/editorialboard.htm>

EDITORIAL OFFICE
Jin-Lei Wang, Director

World Journal of Clinical Cases
Baishideng Publishing Group Inc
7901 Stoneridge Drive, Suite 501, Pleasanton, CA 94588, USA
Telephone: +1-925-2238242
Fax: +1-925-2238243
E-mail: editorialoffice@wjgnet.com
Help Desk: <http://www.f6publishing.com/helpdesk>
<http://www.wjgnet.com>

PUBLISHER
Baishideng Publishing Group Inc
7901 Stoneridge Drive, Suite 501, Pleasanton, CA 94588, USA
Telephone: +1-925-2238242
Fax: +1-925-2238243
E-mail: bpgoffice@wjgnet.com
Help Desk: <http://www.f6publishing.com/helpdesk>
<http://www.wjgnet.com>

PUBLICATION DATE
June 16, 2018

COPYRIGHT

© 2018 Baishideng Publishing Group Inc. Articles published by this Open Access journal are distributed under the terms of the Creative Commons Attribution Non-commercial License, which permits use, distribution, and reproduction in any medium, provided the original work is properly cited, the use is non commercial and is otherwise in compliance with the license.

SPECIAL STATEMENT

All articles published in journals owned by the Baishideng Publishing Group (BPG) represent the views and opinions of their authors, and not the views, opinions or policies of the BPG, except where otherwise explicitly indicated.

INSTRUCTIONS TO AUTHORS

<http://www.wjgnet.com/bpg/gerinfo/204>

ONLINE SUBMISSION

<http://www.f6publishing.com>

Elusive left ventricular thrombus: Diagnostic role of cardiac magnetic resonance imaging-A case report and review of the literature

Irfan Siddiqui, Tin Nguyen, Assad Movahed, Deepa Kabirdas

Irfan Siddiqui, Tin Nguyen, Assad Movahed, Deepa Kabirdas, Department of Cardiovascular Sciences, East Carolina University, Brody School of Medicine, East Carolina Heart Institute, Greenville, NC 27858, United States

ORCID number: Irfan Siddiqui (0000-0002-7322-7260); Tin Nguyen (0000-0002-6920-5018); Assad Movahed (0000-0002-6874-1775); Deepa Kabirdas (0000-0002-0226-4523).

Author contributions: Siddiqui I, Nguyen T, Movahed A and Kabirdas D contributed to the manuscript writing and revision.

Informed consent statement: Patient was not required to give informed consent to the study because the analysis used anonymous data that were obtained after the patient agreed to treatment by written consent.

Conflict-of-interest statement: No potential conflicts of interest relevant to this article were reported.

CARE Checklist (2013): The authors have read the CARE Checklist (2013), and the manuscript was prepared and revised according to the CARE Checklist (2013).

Open-Access: This article is an open-access article which was selected by an in-house editor and fully peer-reviewed by external reviewers. It is distributed in accordance with the Creative Commons Attribution Non Commercial (CC BY-NC 4.0) license, which permits others to distribute, remix, adapt, build upon this work non-commercially, and license their derivative works on different terms, provided the original work is properly cited and the use is non-commercial. See: <http://creativecommons.org/licenses/by-nc/4.0/>

Manuscript source: Invited manuscript

Correspondence to: Assad Movahed, MD, Attending Doctor, Department of Cardiovascular Sciences, East Carolina University, Brody School of Medicine, East Carolina Heart Institute, 115 Heart Drive, Greenville, NC 27858, United States. movaheda@ecu.edu
Telephone: +1-252-7444400
Fax: +1-252-7447724

Received: February 14, 2018

Peer-review started: February 14, 2018

First decision: March 8, 2018

Revised: March 24, 2018

Accepted: April 11, 2018

Article in press: April 12, 2018

Published online: June 16, 2018

Abstract

Identification of left ventricular mural thrombus (LVT) may be challenging depending on the imaging modality used. We present a case of LVT which was incidentally identified on cine cardiac magnetic resonance imaging (CMR). A sixty-four years old female presented with worsening dyspnea on exertion with troponin elevation. Transthoracic echocardiography (TTE) revealed a dilated left ventricle (LV) and ejection fraction (EF 30%) with thinning and akinesis of inferior/inferolateral wall was noted with basal and mid inferior wall aneurysm, and thrombus was not identified. CMR done to ascertain viability of myocardium revealed a mural thrombus within basal inferior aneurysm. This was not visualized on transthoracic echocardiography with and without use of contrast. She underwent coronary artery bypass grafting, bioprosthetic mitral valve replacement, resection and plication of posterior left ventricular aneurysm with removal of mural thrombus, and was started on anticoagulation with warfarin post-operatively for the apical thrombi. Cardiac magnetic resonance is a well suited imaging modality in detecting LVT due to its high resolution images and is more reproducible than TTE. In our patient, conventional TTE despite administration of echo-contrast agents failed to diagnose the presence of LVT in the basal inferior aneurysm as well as the apical thrombi. Delayed-enhancement CMR provides the greatest sensitivity for detection of left ventricular thrombus, superior

to standard transthoracic and contrast-enhanced transthoracic echocardiography.

Key words: Left ventricular thrombus; Cardiovascular magnetic resonance; Transthoracic echocardiogram

© The Author(s) 2018. Published by Baishideng Publishing Group Inc. All rights reserved.

Core tip: Delayed-enhancement cardiac magnetic resonance imaging provides the greatest sensitivity for detection of left ventricular thrombus, superior to standard transthoracic and contrast-enhanced transthoracic echocardiography.

Siddiqui I, Nguyen T, Movahed A, Kabirdas D. Elusive left ventricular thrombus: Diagnostic role of cardiac magnetic resonance imaging-A case report and review of the literature. *World J Clin Cases* 2018; 6(6): 127-131 Available from: URL: <http://www.wjgnet.com/2307-8960/full/v6/i6/127.htm> DOI: <http://dx.doi.org/10.12998/wjcc.v6.i6.127>

INTRODUCTION

Left ventricular mural thrombus (LVT) complicating myocardial infarction has significant morbidity and potential mortality. Studies have demonstrated high incidence of LVT following anterior myocardial infarction^[1]. LVT carries both short term and long term risk of embolic events which may result in stroke and systemic complications^[2,3]. Early identification and prompt treatment is crucial in management of these patients. Multiple imaging modalities may be used to diagnose LVT including transthoracic echocardiography (TTE), transesophageal echocardiography (TEE), and cardiac magnetic resonance imaging (CMR)^[4]. We present a patient with worsening dyspnea on exertion and heart failure with reduced ejection fraction (HFrEF) who was later found to have a laminated LV mural thrombus which was not identified on TTE despite ultrasound contrast agent administration for LV opacification.

CASE REPORT

A sixty-four years old female with a past medical as well as family history of type II diabetes and hypertension presented to an outside facility with worsening dyspnea on exertion that had rapidly progressed from her baseline along with troponin elevation. Her electrocardiogram (EKG) did not show evidence for ST elevation. A transthoracic echocardiogram (TTE) was performed which revealed EF 20%-25%, severe inferior hypokinesis, mild apical hypokinesis. She underwent cardiac catheterization for presumed ischemic cardiomyopathy due to reduced EF and troponin elevation, which revealed chronic occlusion of the right coronary artery, subtotal occlusion of the proximal LAD, a severe

stenosis in the first circumflex marginal and an occluded second marginal. She was transferred to our facility for coronary artery bypass grafting. TTE on presentation to our facility revealed a severely dilated left ventricle (LV) with eccentric hypertrophy and reduced ejection fraction (EF) of 30%. Thinning and akinesis of the inferior/inferolateral wall was noted with basal and mid inferior wall aneurysm which was likely supplied by an occluded right coronary artery. There was severe functional secondary mitral regurgitation arising from annular dilatation. No thrombus was identified despite administration of ultrasound contrast agent (Figure 1).

CMR was also done within 24 h of the TTE to ascertain viability of myocardium to determine candidacy for surgical revascularization. CMR revealed a severely dilated LV chamber size with large basal inferior wall aneurysm. Post Gadolinium Inversion recovery sequences with high inversion time of 600 ms revealed 3 cm x 1.3 cm mass within basal inferior aneurysm with homogenous black appearance confirming presence of mural thrombus. There were also 2 apical thrombi visualized with largest measuring 1 cm x 1 cm (Figure 2). Aneurysmal basal inferior wall was non-viable however myocardium supplied by left anterior descending (LAD) and left circumflex territory (LCX) was noted to be viable. She underwent coronary artery bypass grafting with a saphenous vein graft (SVG) to LAD and a SVG to the first obtuse marginal branch of LCX as well as bioprosthetic mitral valve replacement (MVR). She also underwent resection and plication of posterior left ventricular aneurysm with removal of mural thrombus. She was started on anticoagulation with warfarin post-operatively for the apical thrombi.

DISCUSSION

While transthoracic echocardiography is a valuable diagnostic test in assessing cardiac structure and function and remains a mainstay as initial diagnostic imaging for potential cardiac source of embolism^[5], its utility in the detection and diagnosis of LVT is variable. Previous consensus documents have recommended TTE as an initial screening tool for LVT^[6,7] and early studies have evaluated its sensitivity and specificity in detection of LVT^[8-10]. Factors such as indication for TTE and use of echo contrast influence its sensitivity for detection of LVT as reported by Weinsaft *et al.*^[11] If the clinical indication was specifically to evaluate for LVT, the sensitivity increased from 26% to 60%, with an overall sensitivity and specificity of 33% and 91%, respectively. CMR is currently a widely available imaging modality gaining popularity for detection of cardiac thrombus. Investigators have found CMR to have a higher sensitivity and specificity of 58% and 99%, respectively for detection of LV thrombus in comparison with TTE. Additionally, they found that both cine-CMR and TTE were less likely to detect small protuberant thrombus as well as mural thrombus.

Cardiac magnetic resonance is a well suited imaging

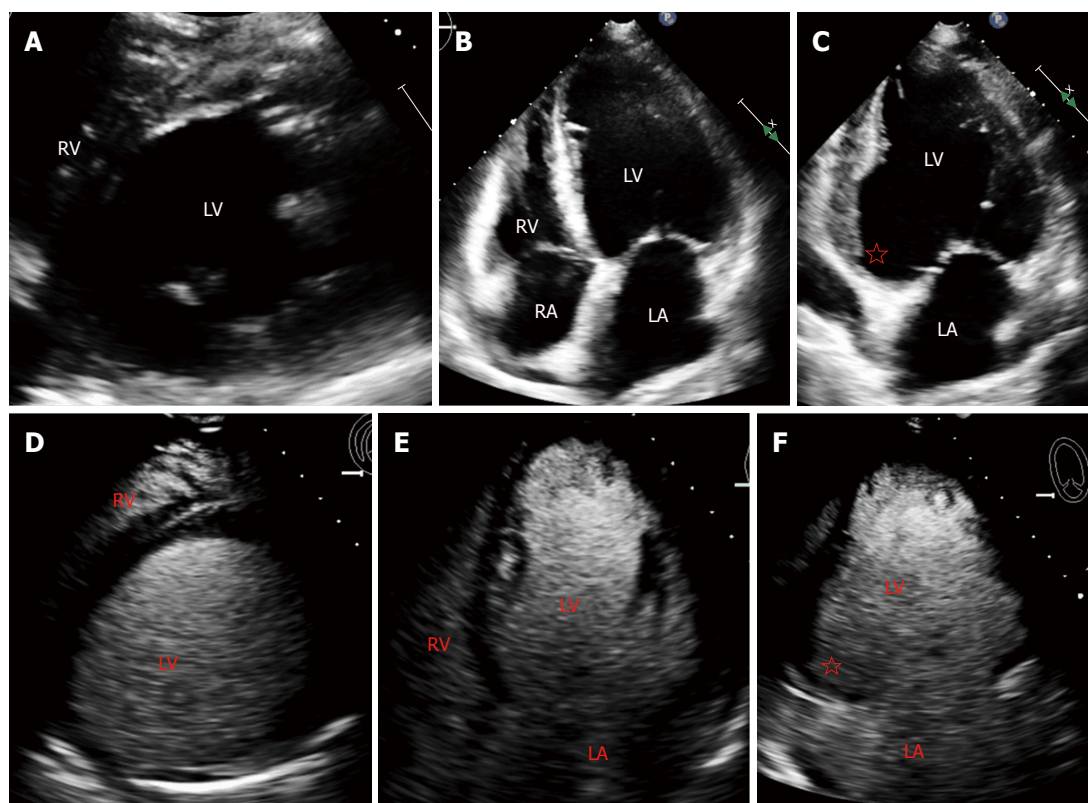


Figure 1 Transthoracic echocardiogram without and with definity contrast demonstrated absence of thrombus. A: Parasternal short axis of transthoracic echocardiogram; B: Apical 4-chamber of transthoracic echocardiogram; C: Apical 2-chamber of transthoracic echocardiogram; D: Parasternal short axis transthoracic echocardiogram with definity contrast; E: Apical 4-chamber transthoracic echocardiogram with definity contrast; F: Apical 2-chamber transthoracic echocardiogram with definity contrast. There is an inferior wall aneurysm (red star). LA: Left atrium; LV: Left ventricle; RV: Right ventricle; RA: Right atrium.

modality in detecting LVT due to its high resolution images and is more reproducible than TTE^[12]. While it is the preferred method for definitive detection of LVT, differences in sensitivity exist between cine and delayed enhancement CMR (DE-CMR). DE-CMR is a technique which utilizes Inversion Recovery (IR) sequences which is typically used to identify infarcted myocardium from viable myocardium to aid in determination of candidacy for surgical revascularization in patients with severely reduced left ventricular function. Conventional DE-CMR utilizes an inversion time (also known as TI) of about 200-300 ms which makes viable myocardium appear black (null) while infarcted myocardium appears bright whereas mural thrombus appears variable, gray with an “etched” appearance. DE-CMR can be tailored to detect thrombus by adjusting the inversion time to longer intervals, *i.e.*, long TI fixed at about 600 ms aids in nulling avascular tissue such as mural thrombus and renders a homogeneously black appearance which is characteristic and diagnostic of thrombus. Weinsaft and colleagues compared sensitivities of cine-CMR vs DE-CMR amongst a sample and found that DE-CMR identified LVT in a higher number of patients compared to cine-CMR (7% vs 4.7%) which was confirmed by pathology^[13]. The limitation of cine-CMR was especially evident with mural thrombi and it was concluded by the authors that DE-CMR is a more clinically useful tool for detection of LVT. Additionally, DE-CMR with long TI has

also been demonstrated to be effective in differentiating thrombus from neoplasm^[14].

Our case highlights the limitations of transthoracic echocardiography in detecting laminated mural thrombi. In these instances, DE-CMR is invaluable in establishing a diagnosis. The indication for TTE in this case was not detection of LVT, and hence the literature would suggest that the sensitivity for detection in this case would be low (26%). Additional groups such as Srichai *et al*^[4] demonstrated a 100% sensitivity of DE-CMR in detecting LV thrombi in patients with recent systemic embolism whereas TTE detected 33% and TEE detected 50% of confirmed thrombus. Diagnosis requires a high index of suspicion with careful attention to patient risk factors and predisposing anatomy on echocardiography.

In our patient, conventional TTE despite administration of echo-contrast agents failed to diagnose the presence of LVT in the basal inferior aneurysm as well as the apical thrombi. Lack of echo-contrast uptake by a laminated thrombus in an aneurysmal basal inferior wall camouflaged as the myocardium itself and hence likely concealed the thrombus. Two small apical thrombi which were well visualized in DE-CMR were also not detected in contrast-enhanced TTE which points to the decreased sensitivity of the modality to exclude LVT. Cine-CMR in our patient revealed thinned, dyskinetic basal inferior wall aneurysm and DE-CMR confirmed the presence of thrombi. CMR proved to be a comprehensive diagnostic

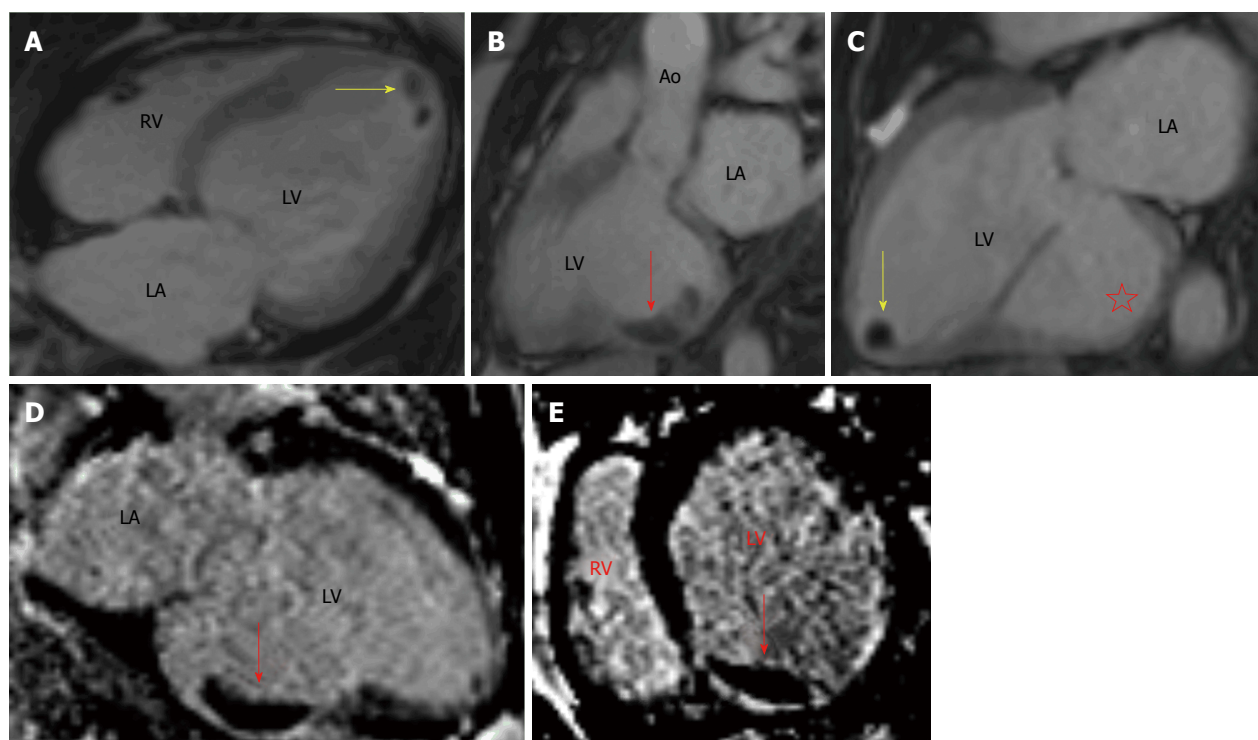


Figure 2 Delayed enhancement cardiac magnetic resonance imaging illustrates a large mural thrombus measuring 3.0 cm x 1.3 cm (red arrow) adherence to the basal inferior wall aneurysm (red star) as well as two apical thrombi (yellow arrow). A: 4-chamber of delayed enhancement cardiac magnetic resonance imaging (CMR) with long TI; B and C: 3-chamber of delayed enhancement CMR with long TI; D: 2-chamber of delayed enhancement CMR with standard TI; E: Short axis of delayed enhancement CMR with standard TI. LA: Left atrium; LV: Left ventricle; RV: Right ventricle; CMR: Cardiac magnetic resonance imaging.

tool in identifying myocardial viability/candidacy for surgical revascularization, confirming severity of mitral regurgitation, and detecting ventricular aneurysm and mural thrombi. Preoperative diagnosis of LVT and aneurysm was vital in the management of our patient not only to initiate anticoagulation therapy but also aided in surgical planning. Our patient successfully underwent CABG, MVR, removal of mural thrombus, and resection and plication of ventricular aneurysm.

In conclusion, Delayed-enhancement CMR provides the greatest sensitivity for detection of left ventricular thrombus, superior to standard transthoracic and contrast-enhanced transthoracic echocardiography.

ARTICLE HIGHLIGHTS

Case characteristics

A 64-year-old female with type II diabetes and hypertension presented with worsening dyspnea on exertion that had rapidly progressed from her baseline with orthopnea and paroxysmal nocturnal dyspnea.

Clinical diagnosis

Pulmonary rales, jugular venous distension, and a loud holosystolic murmur radiating to axilla.

Differential diagnosis

New-onset heart failure due to mitral regurgitation vs cardiomyopathy.

Laboratory diagnosis

Elevated troponin and brain natriuretic peptide.

Imaging diagnosis

Transthoracic echocardiogram with ultrasound enhancing agent showed severe functional secondary mitral regurgitation and reduced left ventricle ejection fraction of 30% with inferior wall aneurysm, while delayed enhancement cardiac magnetic resonance imaging (CMR) illustrated a large mural thrombus measuring 3.0 cm x 1.3 cm adherence to the basal inferior wall aneurysm as well as two apical thrombi.

Treatment

Coronary artery bypass grafting, mitral valve replacement, removal of mural thrombus, and resection and plication of ventricular aneurysm.

Related reports

Cardiac magnetic resonance is a well suited imaging modality in detecting left ventricular thrombus due to its high resolution images and is more reproducible than transthoracic echocardiogram.

Experiences and lessons

Delayed-enhancement CMR provides the greatest sensitivity for detection of left ventricular thrombus, superior to standard transthoracic and contrast-enhanced transthoracic echocardiography.

REFERENCES

- 1 Asinger RW, Mikell FL, Elspeger J, Hodges M. Incidence of left-ventricular thrombosis after acute transmural myocardial infarction. Serial evaluation by two-dimensional echocardiography. *N Engl J Med* 1981; **305**: 297-302 [PMID: 7242633 DOI: 10.1056/NEJM198108063050601]
- 2 Stratton JR, Resnick AD. Increased embolic risk in patients with left ventricular thrombi. *Circulation* 1987; **75**: 1004-1011 [PMID: 3568301 DOI: 10.1161/01.CIR.75.5.1004]

- 3 **Vaitkus PT**, Barnathan ES. Embolic potential, prevention and management of mural thrombus complicating anterior myocardial infarction: a meta-analysis. *J Am Coll Cardiol* 1993; **22**: 1004-1009 [PMID: 8409034 DOI: 10.1016/0735-1097(93)90409-T]
- 4 **Srichai MB**, Junor C, Rodriguez LL, Stillman AE, Grimm RA, Lieber ML, Weaver JA, Smedira NG, White RD. Clinical, imaging, and pathological characteristics of left ventricular thrombus: a comparison of contrast-enhanced magnetic resonance imaging, transthoracic echocardiography, and transesophageal echocardiography with surgical or pathological validation. *Am Heart J* 2006; **152**: 75-84 [PMID: 16824834 DOI: 10.1016/j.ahj.2005.08.021]
- 5 **Saric M**, Armour AC, Arnaout MS, Chaudhry FA, Grimm RA, Kronzon I, Landeck BF, Maganti K, Michelena HI, Tolstrup K. Guidelines for the Use of Echocardiography in the Evaluation of a Cardiac Source of Embolism. *J Am Soc Echocardiogr* 2016; **29**: 1-42 [PMID: 26765302 DOI: 10.1016/j.echo.2015.09.011]
- 6 **Cheitlin MD**, Armstrong WF, Aurigemma GP, Beller GA, Bierman FZ, Davis JL, Douglas PS, Faxon DP, Gillam LD, Kimball TR, Kussmaul WG, Pearlman AS, Philbrick JT, Rakowski H, Thys DM, Antman EM, Smith SC Jr, Alpert JS, Gregoratos G, Anderson JL, Hiratzka LF, Faxon DP, Hunt SA, Fuster V, Jacobs AK, Gibbons RJ, Russell RO; ACC/AHA/ASE. ACC/AHA/ASE 2003 Guideline Update for the Clinical Application of Echocardiography: summary article. A report of the American College of Cardiology/American Heart Association Task Force on Practice Guidelines (ACC/AHA/ASE Committee to Update the 1997 Guidelines for the Clinical Application of Echocardiography). *J Am Soc Echocardiogr* 2003; **16**: 1091-1110 [PMID: 14566308]
- 7 **Cheitlin MD**, Alpert JS, Armstrong WF, Aurigemma GP, Beller GA, Bierman FZ, Davidson TW, Davis JL, Douglas PS, Gillam LD, Lewis RP, Pearlman AS, Philbrick JT, Shah PM, Williams RG, Ritchie JL, Eagle KA, Gardner TJ, Garson A, Gibbons RJ, O'Rourke RA, Ryan TJ. ACC/AHA guidelines for the clinical application of echocardiography: executive summary. A report of the American College of Cardiology/American Heart Association Task Force on practice guidelines (Committee on Clinical Application of Echocardiography). Developed in collaboration with the American Society of Echocardiography. *J Am Coll Cardiol* 1997; **29**: 862-879 [PMID: 9091535 DOI: 10.1016/S0735-1097(96)90000-5]
- 8 **Visser CA**, Kan G, David GK, Lie KI, Durrer D. Two dimensional echocardiography in the diagnosis of left ventricular thrombus. A prospective study of 67 patients with anatomic validation. *Chest* 1983; **83**: 228-232 [PMID: 6822107 DOI: 10.1378/chest.83.2.228]
- 9 **Ezekowitz MD**, Wilson DA, Smith EO, Burow RD, Harrison LH Jr, Parker DE, Elkins RC, Peyton M, Taylor FB. Comparison of Indium-111 platelet scintigraphy and two-dimensional echocardiography in the diagnosis of left ventricular thrombi. *N Engl J Med* 1982; **306**: 1509-1513 [PMID: 7078607 DOI: 10.1056/NEJM198206243062502]
- 10 **Stratton JR**, Lighty GW Jr, Pearlman AS, Ritchie JL. Detection of left ventricular thrombus by two-dimensional echocardiography: sensitivity, specificity, and causes of uncertainty. *Circulation* 1982; **66**: 156-166 [PMID: 7083502 DOI: 10.1161/01.CIR.66.1.156]
- 11 **Weinsaft JW**, Kim HW, Crowley AL, Klem I, Shenoy C, Van Assche L, Brosnan R, Shah DJ, Velazquez EJ, Parker M, Judd RM, Kim RJ. LV thrombus detection by routine echocardiography: insights into performance characteristics using delayed enhancement CMR. *JACC Cardiovasc Imaging* 2011; **4**: 702-712 [PMID: 21757159 DOI: 10.1016/j.jcmg.2011.03.017]
- 12 **Grothues F**, Smith GC, Moon JC, Bellenger NG, Collins P, Klein HU, Pennell DJ. Comparison of interstudy reproducibility of cardiovascular magnetic resonance with two-dimensional echocardiography in normal subjects and in patients with heart failure or left ventricular hypertrophy. *Am J Cardiol* 2002; **90**: 29-34 [PMID: 12088775 DOI: 10.1016/S0002-9149(02)02381-0]
- 13 **Weinsaft JW**, Kim HW, Shah DJ, Klem I, Crowley AL, Brosnan R, James OG, Patel MR, Heitner J, Parker M, Velazquez EJ, Steenbergen C, Judd RM, Kim RJ. Detection of left ventricular thrombus by delayed-enhancement cardiovascular magnetic resonance prevalence and markers in patients with systolic dysfunction. *J Am Coll Cardiol* 2008; **52**: 148-157 [PMID: 18598895 DOI: 10.1016/j.jacc.2008.03.041]
- 14 **Pazos-López P**, Pozo E, Siqueira ME, García-Lunar I, Cham M, Jacobi A, Macaluso F, Fuster V, Narula J, Sanz J. Value of CMR for the differential diagnosis of cardiac masses. *JACC Cardiovasc Imaging* 2014; **7**: 896-905 [PMID: 25129516 DOI: 10.1016/j.jcmg.2014.05.009]

P- Reviewer: Satoh H **S- Editor:** Cui LJ **L- Editor:** A
E- Editor: Tan WW





Published by **Baishideng Publishing Group Inc**
7901 Stoneridge Drive, Suite 501, Pleasanton, CA 94588, USA
Telephone: +1-925-223-8242
Fax: +1-925-223-8243
E-mail: bpgoffice@wjgnet.com
Help Desk: <http://www.f6publishing.com/helpdesk>
<http://www.wjgnet.com>

