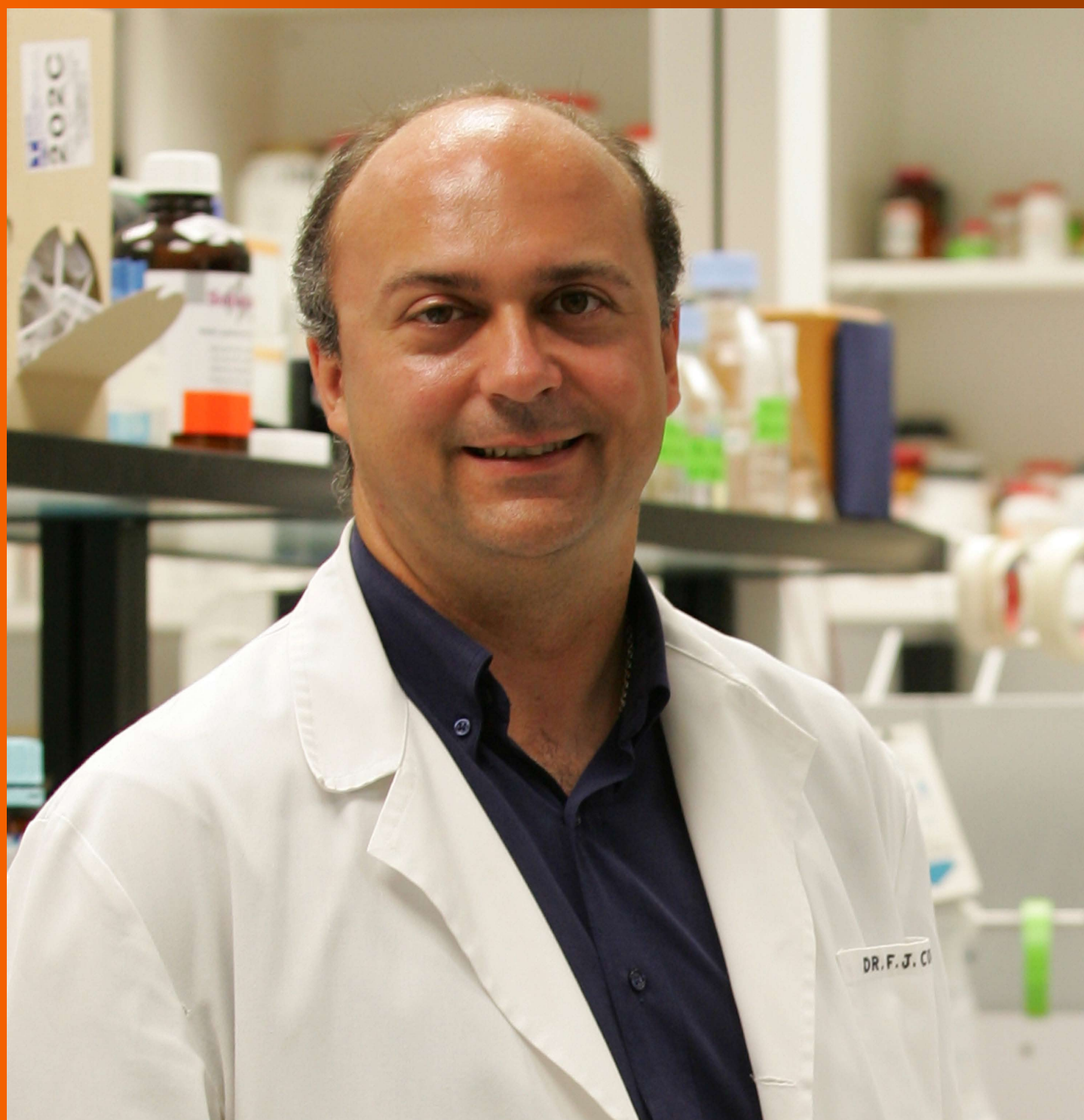


# World Journal of *Gastroenterology*

*World J Gastroenterol* 2018 June 28; 24(24): 2537-2646



**REVIEW**

- 2537 Glycoprotein biomarkers for the detection of pancreatic ductal adenocarcinoma  
*Llop E, Guerrero PE, Duran A, Barrabés S, Massaguer A, Ferri MJ, Albiol-Quer M, de Llorens R, Peracaula R*
- 2555 Hepatitis C virus infection in children in the era of direct-acting antiviral  
*Pawlowska M, Sobolewska-Pilarczyk M, Domagalski K*
- 2567 Tumor heterogeneity of gastric cancer: From the perspective of tumor-initiating cell  
*Gao JP, Xu W, Liu WT, Yan M, Zhu ZG*

**MINIREVIEWS**

- 2582 Direct-acting antivirals and hepatocellular carcinoma in chronic hepatitis C: A few lights and many shadows  
*Guarino M, Sessa A, Cossiga V, Morando F, Caporaso N, Morisco F; On behalf of the Special Interest Group on "Hepatocellular carcinoma and new anti-HCV therapies" of the Italian Association for the Study of the Liver*

**ORIGINAL ARTICLE****Basic Study**

- 2596 Novel serum microRNAs panel on the diagnostic and prognostic implications of hepatocellular carcinoma  
*An Y, Gao S, Zhao WC, Qiu BA, Xia NX, Zhang PJ, Fan ZP*
- 2605 Bioinformatics analysis of aberrantly methylated-differentially expressed genes and pathways in hepatocellular carcinoma  
*Sang L, Wang XM, Xu DY, Zhao WJ*

**Case Control Study**

- 2617 Mediterranean dietary components are inversely associated with advanced colorectal polyps: A case-control study  
*Fliss-Isakov N, Kariv R, Webb M, Ivancovsky D, Margalit D, Zelber-Sagi S*

**META-ANALYSIS**

- 2628 Comparison between uncut Roux-en-Y and Roux-en-Y reconstruction after distal gastrectomy for gastric cancer: A meta-analysis  
*Sun MM, Fan YY, Dang SC*

**CASE REPORT**

- 2640 Primary hepatic neuroendocrine tumor case with a preoperative course of 26 years: A case report and literature review  
*Meng XF, Pan YW, Wang ZB, Duan WD*

## ABOUT COVER

Editorial board member of *World Journal of Gastroenterology*, Fernando J Corrales, PhD, Professor, Functional Proteomics Laboratory, National Biotechnology Center (CNB-CSIC), Madrid 28049, Spain

## AIMS AND SCOPE

*World Journal of Gastroenterology* (*World J Gastroenterol*, *WJG*, print ISSN 1007-9327, online ISSN 2219-2840, DOI: 10.3748) is a peer-reviewed open access journal. *WJG* was established on October 1, 1995. It is published weekly on the 7<sup>th</sup>, 14<sup>th</sup>, 21<sup>st</sup>, and 28<sup>th</sup> each month. The *WJG* Editorial Board consists of 642 experts in gastroenterology and hepatology from 59 countries.

The primary task of *WJG* is to rapidly publish high-quality original articles, reviews, and commentaries in the fields of gastroenterology, hepatology, gastrointestinal endoscopy, gastrointestinal surgery, hepatobiliary surgery, gastrointestinal oncology, gastrointestinal radiation oncology, gastrointestinal imaging, gastrointestinal interventional therapy, gastrointestinal infectious diseases, gastrointestinal pharmacology, gastrointestinal pathophysiology, gastrointestinal pathology, evidence-based medicine in gastroenterology, pancreatology, gastrointestinal laboratory medicine, gastrointestinal molecular biology, gastrointestinal immunology, gastrointestinal microbiology, gastrointestinal genetics, gastrointestinal translational medicine, gastrointestinal diagnostics, and gastrointestinal therapeutics. *WJG* is dedicated to become an influential and prestigious journal in gastroenterology and hepatology, to promote the development of above disciplines, and to improve the diagnostic and therapeutic skill and expertise of clinicians.

## INDEXING/ABSTRACTING

*World Journal of Gastroenterology* (*WJG*) is now indexed in Current Contents®/Clinical Medicine, Science Citation Index Expanded (also known as SciSearch®), Journal Citation Reports®, Index Medicus, MEDLINE, PubMed, PubMed Central and Directory of Open Access Journals. The 2017 edition of Journal Citation Reports® cites the 2016 impact factor for *WJG* as 3.365 (5-year impact factor: 3.176), ranking *WJG* as 29<sup>th</sup> among 79 journals in gastroenterology and hepatology (quartile in category Q2).

## EDITORS FOR THIS ISSUE

Responsible Assistant Editor: *Xiang Li*  
Responsible Electronic Editor: *Shu-Yu Yin*  
Proofing Editor-in-Chief: *Lian-Sheng Ma*

Responsible Science Editor: *Xue-Jiao Wang*  
Proofing Editorial Office Director: *Ze-Mao Gong*

NAME OF JOURNAL  
*World Journal of Gastroenterology*

ISSN  
ISSN 1007-9327 (print)  
ISSN 2219-2840 (online)

LAUNCH DATE  
October 1, 1995

FREQUENCY  
Weekly

EDITORS-IN-CHIEF  
**Damian Garcia-Olmo, MD, PhD, Doctor, Professor, Surgeon**, Department of Surgery, Universidad Autonoma de Madrid; Department of General Surgery, Fundacion Jimenez Diaz University Hospital, Madrid 28040, Spain

**Stephen C Strom, PhD, Professor**, Department of Laboratory Medicine, Division of Pathology, Karolinska Institutet, Stockholm 141-86, Sweden

**Andrzej S Tarnawski, MD, PhD, DSc (Med), Professor of Medicine, Chief Gastroenterology**, VA Long Beach Health Care System, University of California, Irvine, CA, 5901 E. Seventh Str., Long Beach,

CA 90822, United States

EDITORIAL BOARD MEMBERS  
All editorial board members resources online at <http://www.wjgnet.com/1007-9327/editorialboard.htm>

EDITORIAL OFFICE  
**Ze-Mao Gong, Director**  
*World Journal of Gastroenterology*  
Baishideng Publishing Group Inc  
7901 Stoneridge Drive, Suite 501,  
Pleasanton, CA 94588, USA  
Telephone: +1-925-2238242  
Fax: +1-925-2238243  
E-mail: [editorialoffice@wjgnet.com](mailto:editorialoffice@wjgnet.com)  
Help Desk: <http://www.f6publishing.com/helpdesk>  
<http://www.wjgnet.com>

PUBLISHER  
Baishideng Publishing Group Inc  
7901 Stoneridge Drive, Suite 501,  
Pleasanton, CA 94588, USA  
Telephone: +1-925-2238242  
Fax: +1-925-2238243  
E-mail: [bpgoffice@wjgnet.com](mailto:bpgoffice@wjgnet.com)  
Help Desk: <http://www.f6publishing.com/helpdesk>  
<http://www.wjgnet.com>

PUBLICATION DATE  
June 28, 2018

COPYRIGHT  
© 2018 Baishideng Publishing Group Inc. Articles published by this Open-Access journal are distributed under the terms of the Creative Commons Attribution Non-commercial License, which permits use, distribution, and reproduction in any medium, provided the original work is properly cited, the use is non commercial and is otherwise in compliance with the license.

SPECIAL STATEMENT  
All articles published in journals owned by the Baishideng Publishing Group (BPG) represent the views and opinions of their authors, and not the views, opinions or policies of the BPG, except where otherwise explicitly indicated.

INSTRUCTIONS TO AUTHORS  
Full instructions are available online at <http://www.wjgnet.com/bpg/gerinfo/204>

ONLINE SUBMISSION  
<http://www.f6publishing.com>

# Comparison between uncut Roux-en-Y and Roux-en-Y reconstruction after distal gastrectomy for gastric cancer: A meta-analysis

Ming-Ming Sun, Yi-Yi Fan, Sheng-Chun Dang

Ming-Ming Sun, Yi-Yi Fan, Sheng-Chun Dang, Department of General Surgery, The Affiliated Hospital of Jiangsu University, Zhenjiang 212001, Jiangsu Province, China

ORCID number: Ming-Ming Sun (0000-0003-2673-5905); Yi-Yi Fan (0000-0003-2946-7694); Sheng-Chun Dang (0000-0001-8878-9007).

**Author contributions:** Sun MM and Fan YY reviewed and screened the articles included in our meta-analysis; Sun MM and Dang SC performed the analysis and drafted the manuscript; Fan YY and Dang SC drew the essential diagrams; Sun MM and Dang SC designed the study and edited the manuscript.

**Supported by** Jiangsu Province Fund Projects for “Six Talent Peaks” High-Level Talent, No. 2016-WSN-007.

**Conflict-of-interest statement:** The authors deny any conflict of interest.

**Data sharing statement:** No additional data is available.

**PRISMA 2009 Checklist statement:** The authors have read the PRISMA 2009 Checklist, and the manuscript was prepared and revised according to the PRISMA 2009 Checklist.

**Open-Access:** This article is an open-access article which was selected by an in-house editor and fully peer-reviewed by external reviewers. It is distributed in accordance with the Creative Commons Attribution Non Commercial (CC BY-NC 4.0) license, which permits others to distribute, remix, adapt, build upon this work non-commercially, and license their derivative works on different terms, provided the original work is properly cited and the use is non-commercial. See: <http://creativecommons.org/licenses/by-nc/4.0/>

**Manuscript source:** Invited manuscript

**Correspondence to:** Sheng-Chun Dang, MD, Professor, Chief Doctor, Surgeon, Department of General Surgery, the Affiliated Hospital of Jiangsu University, No. 438 Jiefang Road, Zhenjiang 212001, Jiangsu Province, China. [dscgu@163.com](mailto:dscgu@163.com)  
Telephone: +86-511-88820988

Fax: +86-511-88820988

Received: March 13, 2018

Peer-review started: March 13, 2018

First decision: March 30, 2018

Revised: April 5, 2018

Accepted: June 2, 2018

Article in press: June 2, 2018

Published online: June 28, 2018

## Abstract

### AIM

To compare uncut Roux-en-Y (U-RY) gastrojejunostomy with Roux-en-Y (RY) gastrojejunostomy after distal gastrectomy (DG) for gastric cancer.

### METHODS

A literature search was conducted in Pubmed, Embase, Web of Science, Cochrane Library, Science Direct, Chinese National Knowledge Infrastructure, Wanfang, and China Science and Technology Journal Database to identify studies comparing U-RY with RY after DG for gastric cancer until the end of December 2017. Pooled odds ratio or weighted mean difference with 95% confidence interval was calculated using either fixed- or random-effects models. Perioperative outcomes such as operative time, intraoperative blood loss, and hospital stay; postoperative complications such as anastomotic bleeding, stricture and ulcer, reflux gastritis/esophagitis, delayed gastric emptying, and Roux stasis syndrome; and postoperative nutritional status (serum hemoglobin, total protein, and albumin levels) were the main outcomes assessed. Meta-analyses were performed using RevMan 5.3 software.

### RESULTS

Two randomized controlled trials and four nonrandomized observational clinical studies involving 403 and 488



patients, respectively, were included. The results of the meta-analysis showed that operative time [weighted mean difference (WMD): -12.95; 95%CI: -22.29 to -3.61;  $P = 0.007$ ] and incidence of reflux gastritis/esophagitis (OR: 0.40; 95%CI: 0.20-0.80;  $P = 0.009$ ), delayed gastric emptying (OR: 0.29; 95%CI: 0.14-0.61;  $P = 0.001$ ), and Roux stasis syndrome (OR: 0.14; 95%CI: 0.04-0.50;  $P = 0.002$ ) were reduced; and the level of serum albumin (WMD: 0.71; 95%CI: 0.24-1.19;  $P = 0.003$ ) was increased in patients undergoing U-RY reconstruction compared with those undergoing RY reconstruction. No differences were found with respect to intraoperative blood loss, hospital stay, anastomotic bleeding, anastomotic stricture, anastomotic ulcer, the levels of serum hemoglobin, and serum total protein.

## CONCLUSION

U-RY reconstruction has some clinical advantages over RY reconstruction after DG.

**Key words:** Roux-en-Y; Gastric cancer; Meta-analysis; Distal gastrectomy; Reconstruction; Uncut

© The Author(s) 2018. Published by Baishideng Publishing Group Inc. All rights reserved.

**Core tip:** No consensus was available in the literature about gastrointestinal reconstruction after distal gastrectomy (DG) for distal gastric cancer. The present study was a novel systematic review and meta-analysis comparing uncut Roux-en-Y (U-RY) and Roux-en-Y (RY) reconstruction after DG for gastric cancer. This study investigated the relationship between the two in terms of perioperative outcomes, postoperative complications, and postoperative nutritional status. U-RY reconstruction was found to have some advantages, such as less operative time, less postoperative complications, and better postoperative nutritional status, over the conventional RY.

Sun MM, Fan YY, Dang SC. Comparison between uncut Roux-en-Y and Roux-en-Y reconstruction after distal gastrectomy for gastric cancer: A meta-analysis. *World J Gastroenterol* 2018; 24(24): 2628-2639 Available from: URL: <http://www.wjgnet.com/1007-9327/full/v24/i24/2628.htm> DOI: <http://dx.doi.org/10.3748/wjg.v24.i24.2628>

## INTRODUCTION

Gastric cancer is one of the most common malignant tumors of the gastrointestinal tract, and it poses a serious threat to people's survival<sup>[1]</sup>. Epidemiological data show that the number of worldwide new cases of gastric cancer annually has increased to about 951600, ranking fourth among all malignant tumors. Each year, about 723100 patients die of gastric cancer, ranking third in cancer mortality<sup>[2]</sup>.

The most effective method for treating gastric cancer is still radical surgical resection, although alternative

methods include adjuvant chemotherapy, radiotherapy, and molecular targeted therapy<sup>[3]</sup>. At present, the choice of gastrointestinal reconstruction after distal gastrectomy (DG) for distal gastric cancer remains controversial. Reducing the incidence of postoperative complications and improving the quality of life are ideal ways of digestive tract reconstruction<sup>[4]</sup>. Three widely used reconstruction methods after DG are Billroth I, Billroth II, and Roux-en-Y (RY) anastomosis<sup>[5]</sup>.

Billroth I reconstruction is widely used because of its physiological advantages, but it cannot be applied to all patients due to greater anastomotic tension and greater risk of anastomotic fistula<sup>[6]</sup>. Billroth II reconstruction solves the problem of anastomotic tension, but it may increase the incidence of postoperative alkaline reflux gastritis, esophagitis, and anastomotic ulcers because of the changes in normal physiological pathways<sup>[7,8]</sup>. RY reconstruction not only addresses the problem of alkaline bile reflux but also solves the problem of anastomosis; however, it leaves the patient prone to Roux stasis syndrome<sup>[9,10]</sup>. A new method of digestive tract reconstruction called the "uncut Roux-en-Y (U-RY) anastomosis" was proposed in 1988, and it is an improvement of RY anastomosis<sup>[11]</sup>. According to the reports of most surgeons, the technique of U-RY reconstruction was summarized in this study. After distal gastrectomy (DG), an end-to-side gastrojejunostomy was established between the remnant stomach and the jejunum, about 25-35 cm distal to the ligament of Treitz. Then, a side-to-side jejunojejunostomy was established between the afferent and efferent jejunal limbs, approximately 10-20 cm distal to the ligament of Treitz and 20-30 cm distal to the gastrojejunostomy site. Finally, the jejunal lumen was occluded using different methods at a site 5 cm proximal to the gastrojejunostomy. A subsequent study<sup>[12]</sup> showed that the U-RY anastomosis was effective in preventing Roux stasis syndrome, reflux gastritis, and reflux esophagitis. Therefore, U-RY reconstruction is a promising method that may replace the previous type of anastomosis. This meta-analysis was performed to compare the U-RY with RY reconstruction after DG for gastric cancer in terms of perioperative outcomes, postoperative complications, and postoperative nutritional status.

## MATERIALS AND METHODS

### Literature search

Clinical studies that compared U-RY and RY reconstruction after DG for gastric cancer were collected from PubMed, Embase, Web of Science, Cochrane Library, Science Direct, Chinese National Knowledge Infrastructure, Wanfang, and VIP databases until the end of December 2017. "Uncut Roux-en-Y" was used as the medical subject heading and the key word. A manual screening of the reference lists of all included studies was also performed for extra potentially eligible studies. Randomized controlled trials (RCTs) and nonrandomized observational clinical studies (OCS) with complete full text

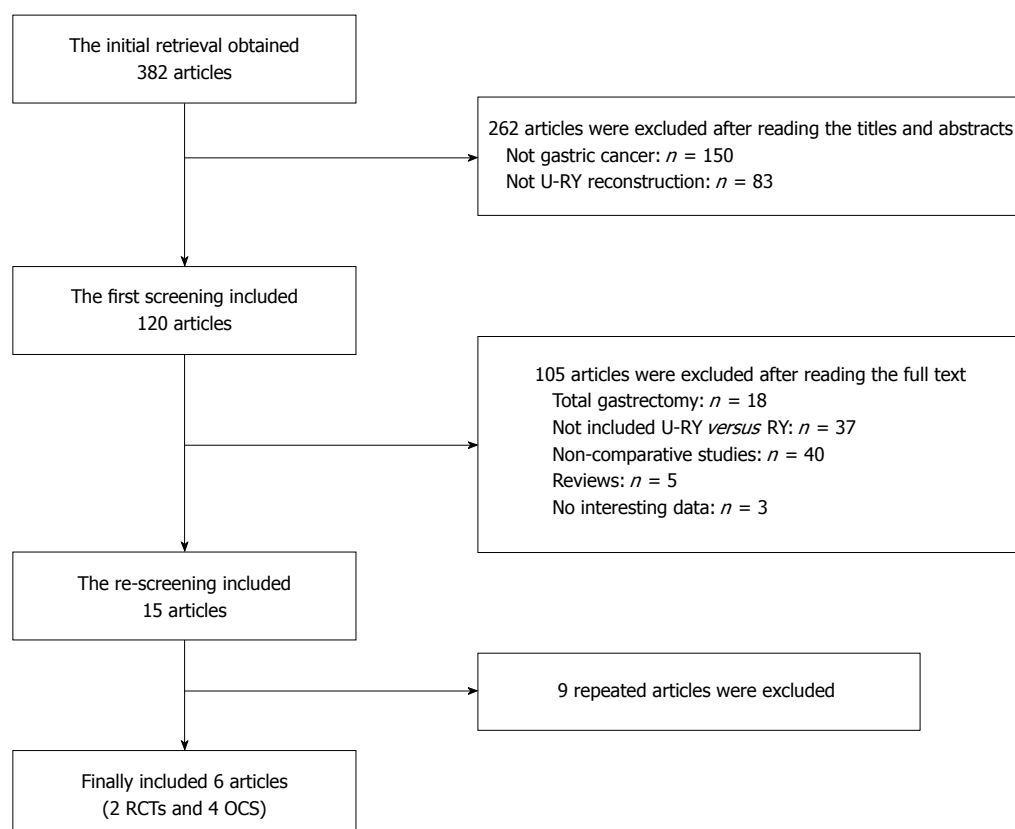


Figure 1 Literature screening process. RCTs: Randomized controlled trials; OCS: Observational clinical studies.

Table 1 Jadad scoring system for randomized controlled studies

Ref.	Randomization	Double blinded	Withdrawals	Total score
Noh <sup>[15]</sup>	1	0	1	2
Xu <i>et al</i> <sup>[16]</sup>	2	0	1	3

Table 2 Newcastle-Ottawa scoring system for nonrandomized comparative studies

Ref.	Selection star	Comparability star	Outcome star	Total star
He <i>et al</i> <sup>[17]</sup>	3	2	2	7
Li <i>et al</i> <sup>[18]</sup>	3	2	2	7
Park <i>et al</i> <sup>[19]</sup>	3	2	2	7
Huang <i>et al</i> <sup>[20]</sup>	4	2	2	8

were included. Two independent reviewers studied the full text of the eligible studies and extracted the research data. In the case of any disagreement, the consensus was reached in consultation with a third researcher. The results of the search strategy are shown in Figure 1.

### Inclusion and exclusion criteria

The inclusion criteria were as follows: (1) Patients with gastric cancer undergoing DG; (2) studies comparing U-RY and RY reconstruction; (3) studies reporting at least

one of the outcomes mentioned; (4) original reports with  $\geq 10$  patients; and (5) studies published in English or Chinese.

The exclusion criteria were as follows: (1) Abstract, case reports, literature review, expert opinions, basic researches, and animal experiments; (2) studies without available data or full text; (3) studies involving patients with gastric cancer undergoing total gastrectomy; and (4) studies including patients with benign disease.

### Outcomes of interest

Perioperative outcomes, postoperative complications, and nutritional status were evaluated. Operative time, digestive tract reconstruction time, intraoperative blood loss, and hospital stay were the main perioperative outcomes to be assessed. Postoperative complications included anastomotic bleeding, stricture and ulcer, reflux gastritis/esophagitis, dumping symptoms, delayed gastric emptying, and Roux stasis syndrome. Postoperative nutritional status included serum hemoglobin, total protein, albumin levels, cholesterol, triglyceride, and body weight.

### Data extraction and quality assessment

The data were extracted independently by two authors. The RCTs were assessed using the Jadad scoring system<sup>[13]</sup>. The Newcastle-Ottawa Quality Assessment Scale<sup>[14]</sup> was used to evaluate the nonrandomized OCS. The quality of the studies was assessed by two reviewers independently and is displayed in Tables 1 and 2.

**Table 3** Characteristics of included studies in the meta-analysis (*n*)

Ref.	Country	Design	Group	Patients	Male/female	Mean age (yr)
Noh <sup>[15]</sup> 2000	South Korea	RCT	U-RY	54	38/16	59
			RY	51	31/20	53
Xu <i>et al</i> <sup>[16]</sup> 2010	China	RCT	U-RY	193	102/91	61.5 ± 7.5
			RY	105	73/32	63.2 ± 6.3
He <i>et al</i> <sup>[17]</sup> 2017	China	Retro	U-RY	80	50/30	58.9 ± 5.4
			RY	51	24/27	58.7 ± 6.3
Li <i>et al</i> <sup>[18]</sup> 2011	China	Retro	U-RY	127	70/57	58.1 ± 9.1
			RY	46	31/15	58.8 ± 11.3
Park <i>et al</i> <sup>[19]</sup> 2014	South Korea	Retro	U-RY	41	N/A	N/A
			RY	55	N/A	N/A
Huang <i>et al</i> <sup>[20]</sup> 2017	China	Retro	U-RY	34	28/6	58.7 ± 15.0
			RY	54	38/16	59.8 ± 10.3

N/A: Not available; RCT: Randomized controlled trials; RY: Roux-en-Y; U-RY: Uncut Roux-en-Y.

**Table 4** Characteristics of included studies in the meta-analysis

Ref.	Country	Design	Group	Operation type	Pathology stage		
					I	II	III
Noh <sup>[15]</sup> 2000	South Korea	RCT	U-RY	Open	19	22	13
			RY		32	8	11
Xu <i>et al</i> <sup>[16]</sup> 2010	China	RCT	U-RY	Open	23	63	107
			RY		12	34	59
He <i>et al</i> <sup>[17]</sup> 2017	China	Retro	U-RY	Open	10	31	39
			RY		4	21	26
Li <i>et al</i> <sup>[18]</sup> 2011	China	Retro	U-RY	Open	13	37	77
			RY		5	13	28
Park <i>et al</i> <sup>[19]</sup> 2014	South Korea	Retro	U-RY	Laparoscopic/		N/A	
			RY	Laparoscopy-assisted		N/A	
Huang <i>et al</i> <sup>[20]</sup> 2017	China	Retro	U-RY	Laparoscopic/	22	10	2
			RY	Open	28	21	5

N/A: Not available; RCT: Randomized controlled trial; Retro: Retrospective observational study; RY: Roux-en-Y; U-RY: Uncut Roux-en-Y.

The data extracted from the studies included population characteristics (study year, country, design, gender, and mean age) and outcome indexes (perioperative outcomes, postoperative complications, and postoperative nutritional status).

### Statistical analysis

Meta-analyses were performed using Review Manager Version 5.3 software. Dichotomous variables were analyzed by estimating the risk ratio with 95% confidence interval (CI), and continuous variables were analyzed using the weighted mean difference (WMD) with 95%CI. A *P*-value < 0.05 was considered a statistically significant difference.

A chi-square test was used to assess the homogeneity of effect sizes to decide the *I*<sup>2</sup> value before meta-analysis. A random-effects model was used when significant heterogeneity existed (*I*<sup>2</sup> > 50%). If the heterogeneity was not significant (*I*<sup>2</sup> < 50%), a fixed-effects statistical model was used.

Moreover, if the heterogeneity was high, subgroup and sensitivity analyses were performed to find the source of the heterogeneity. The funnel plot was constructed to detect potential publication bias.

## RESULTS

### Study characteristics

A total of 382 studies relevant to the search terms were included. Six studies met the inclusion criteria. Finally, two RCTs<sup>[15,16]</sup> and four OCS<sup>[17-20]</sup> with 403 and 488 patients, respectively, were included. The characteristics of studies included in the meta-analysis are shown in Tables 3 and 4. The definition of postoperative complications in the included studies is shown in Table 5.

### Meta-analysis results

According to the Newcastle-Ottawa scoring system, four OCS were found to be of high quality. One RCT was found to be of high quality while another RCT was of low quality according to the Jadad scoring system. All the results are presented in Table 6.

**Comparison of perioperative outcomes:** The detailed results of meta-analysis are given in Figure 2. The meta-analysis revealed that U-RY reconstruction was associated with a significant shortening in the duration of operative time (WMD: -12.95; 95%CI: -22.29 to -3.61; *P* = 0.007) compared to RY reconstruction. No significant

**Table 5** Definition of postoperative complications in the included studies

Ref.	Anastomotic bleeding/stricture/ulcer	Reflux gastritis/esophagitis	Delayed gastric emptying	Roux stasis syndrome
Noh <sup>[15]</sup> 2000	-/ND/ND	ND	ND	Definition D
Xu <i>et al</i> <sup>[16]</sup> 2010	ND/ND/-	ND	-	ND
He <i>et al</i> <sup>[17]</sup> 2017	-/ND/ND	Definition A	Definition B	Definition D
Li <i>et al</i> <sup>[18]</sup> 2011	ND/ND/-	Definition A	Definition C	Definition D
Park <i>et al</i> <sup>[19]</sup> 2014	-/-/-	ND	ND	ND
Huang <i>et al</i> <sup>[20]</sup> 2017	-/-/-	ND	ND	ND

Definition A: Gastritis/esophagitis mucosal inflammation, erosion and bleeding were confirmed by endoscopy; Definition B: Vomiting foods taken 4 to 6 h before, or gastric residue was still great than 200 mL after empty stomach more than 8 h; Definition C: Patients still need nasogastric tube for more than 10 d after surgery; Definition D: The criteria included one of the four following conditions: chronic upper abdominal pain, postprandial fullness, persistent nausea, and intermittent vomiting worsened by eating. ND: No definition.

**Table 6** Meta-analysis of outcomes of interest

Outcome of interest	Studies	Patients (n)	OR/WMD	95%CI	P value
Perioperative outcomes					
Operative time	4	488	-12.95	-22.29, -3.61	0.007
Intraoperative blood loss	4	488	-46.38	-91.93, -0.83	0.05
Hospital stay	4	488	-0.71	-1.69, 0.27	0.16
Postoperative complications					
Anastomotic bleeding	2	471	0.41	0.07, 2.50	0.33
Anastomotic stricture	4	707	0.41	0.12, 1.42	0.16
Anastomotic ulcer	2	236	0.25	0.03, 2.49	0.24
Reflux gastritis/esophagitis	6	891	0.40	0.20, 0.80	0.009
Delayed gastric emptying	5	593	0.29	0.14, 0.61	0.001
Roux stasis syndrome	6	891	0.14	0.04, 0.50	0.002
Postoperative nutritional status					
Serum hemoglobin	2	227	0.51	-0.58, 1.60	0.36
Serum total protein	2	227	0.55	-1.77, 2.86	0.64
Serum albumin	2	227	0.71	0.24, 1.19	0.003

CI: Confidence interval; OR: Odds ratio; WMD: Weighted mean differences.

difference was observed between the groups in terms of intraoperative blood loss (WMD: -46.38; 95%CI: -91.93 to -0.83;  $P = 0.05$ ) and hospital stay (WMD: -0.71; 95%CI: -1.69 to 0.27;  $P = 0.16$ ).

### Comparison of postoperative complications:

The detailed results of the meta-analysis are given in Figures 3 and 4. The results suggested that U-RY reconstruction had significantly lower incidence of reflux gastritis/esophagitis (OR: 0.40; 95%CI: 0.20-0.80;  $P = 0.009$ ), delayed gastric emptying (OR: 0.29; 95%CI: 0.14-0.61;  $P = 0.001$ ), and Roux stasis syndrome (OR: 0.14; 95%CI: 0.04-0.50;  $P = 0.002$ ) compared to RY reconstruction. No significant differences were found between the two reconstructive methods in terms of anastomotic bleeding (OR: 0.41; 95%CI: 0.07-2.50;  $P = 0.33$ ), anastomotic stricture (OR: 0.41; 95%CI: 0.12-1.42;  $P = 0.16$ ), and anastomotic ulcer (OR: 0.25; 95%CI: 0.03-2.49;  $P = 0.24$ ).

### Comparison of postoperative nutritional status:

The detailed results of meta-analysis are given in Figure 5. The meta-analysis results suggested that U-RY reconstruction had a significantly higher level of serum albumin (WMD: 0.71; 95%CI: 0.24-1.19;  $P = 0.003$ )

than RY reconstruction. No significant differences were found between the two reconstructive methods in terms of serum hemoglobin (WMD: 0.56; 95%CI: -0.66 to 1.79;  $P = 0.37$ ) and serum total protein (WMD: 0.55; 95%CI: -1.77 to 2.86;  $P = 0.64$ ).

### Subgroup and sensitivity analyses

The results of the meta-analysis revealed a significant heterogeneity in some outcomes, such as operative time ( $I^2 = 84\%$ ;  $P = 0.0004$ ), intraoperative blood loss ( $I^2 = 90\%$ ;  $P < 0.00001$ ), hospital stay ( $I^2 = 69\%$ ;  $P = 0.02$ ), and incidence of Roux stasis syndrome ( $I^2 = 61\%$ ;  $P = 0.02$ ). Sensitivity analysis of operative time and intraoperative blood loss showed no heterogeneity (Table 7). Sensitivity analysis of hospital stay indicated no heterogeneity after excluding the study by Huang *et al*<sup>[20]</sup> (Table 7). However, no reason for excluding the aforementioned study was found after checking it carefully. Considering that significant heterogeneity might be derived from the different types of studies, a subgroup analysis was performed according to the classification of the study types. The subgroup analysis showed that both OCS and RCT groups had significant heterogeneity (Figure 6), suggesting that heterogeneity was not derived from the combination of different study types. Therefore, it



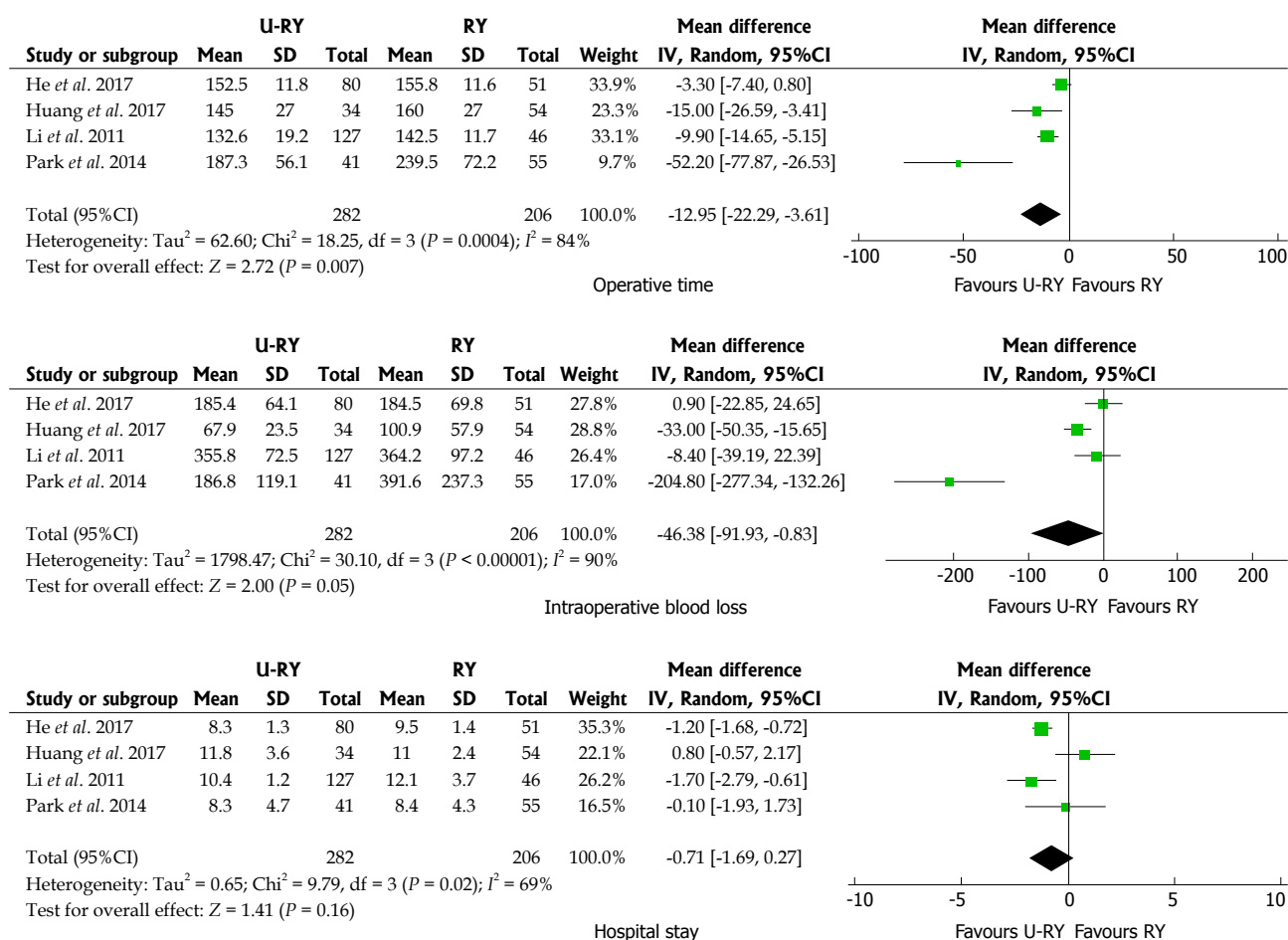


Figure 2 Meta-analysis forest plots concerning operative time, intraoperative blood loss, and hospital stay.

was considered that the heterogeneity was caused by differences in operative technique, experience of the surgeons, postoperative management, and so on.

We noticed that laparoscopic technique was used in two studies as well as the definitions of complications were different in the included studies. Subgroup analyses were undertaken for relevant outcome measures by including studies with laparoscopic technique and different definitions (Table 8). The results showed that there were no statistically significant differences in outcomes between patients undergoing U-RY reconstruction and those receiving RY reconstruction using laparoscopic surgery. When pooling studies using the definition D, patients undergoing U-RY reconstruction had a lower Roux stasis syndrome rate than those receiving RY reconstruction (OR: 0.08; 95%CI: 0.01 to 0.85;  $P = 0.04$ ). However, there were no statistically significant differences in any other defined outcomes.

### Publication bias

Funnel plot analysis showed no obvious publication bias for the incidence of reflux gastritis/esophagitis (Figure 7).

## DISCUSSION

Digestive tract reconstruction is an important aspect of

gastric cancer surgery. However, surgeons have not yet reached a consensus on the choice of reconstruction method after DG. They are seeking the best method of reconstruction that can reduce complications and improve postoperative quality of life<sup>[21]</sup>. Recent studies revealed that RY reconstruction after DG for gastric cancer was advantageous in terms of postoperative long-term functional outcomes compared with the two Billroth methods<sup>[21-23]</sup>. Moreover, a series of studies confirmed the feasibility, practicability, and superiority of the U-RY anastomosis after DG in clinical practice<sup>[24,25]</sup>. However, the choice of U-RY or RY gastrojejunostomy is still controversial. The related outcomes of both methods of reconstruction after DG were analyzed in this study<sup>[26-28]</sup>.

### Perioperative outcomes

Four studies reported operative time, intraoperative blood loss, and hospital stay. The results of the meta-analysis showed that the operative time was reduced in patients undergoing U-RY reconstruction compared to RY reconstruction. Recent studies<sup>[22,24]</sup> reported that U-RY significantly reduced operative time and intraoperative blood loss compared with the traditional RY because cutting off the mesentery and closing mesentery holes were not required. These views supported the conclusion of the present study. No significant difference was

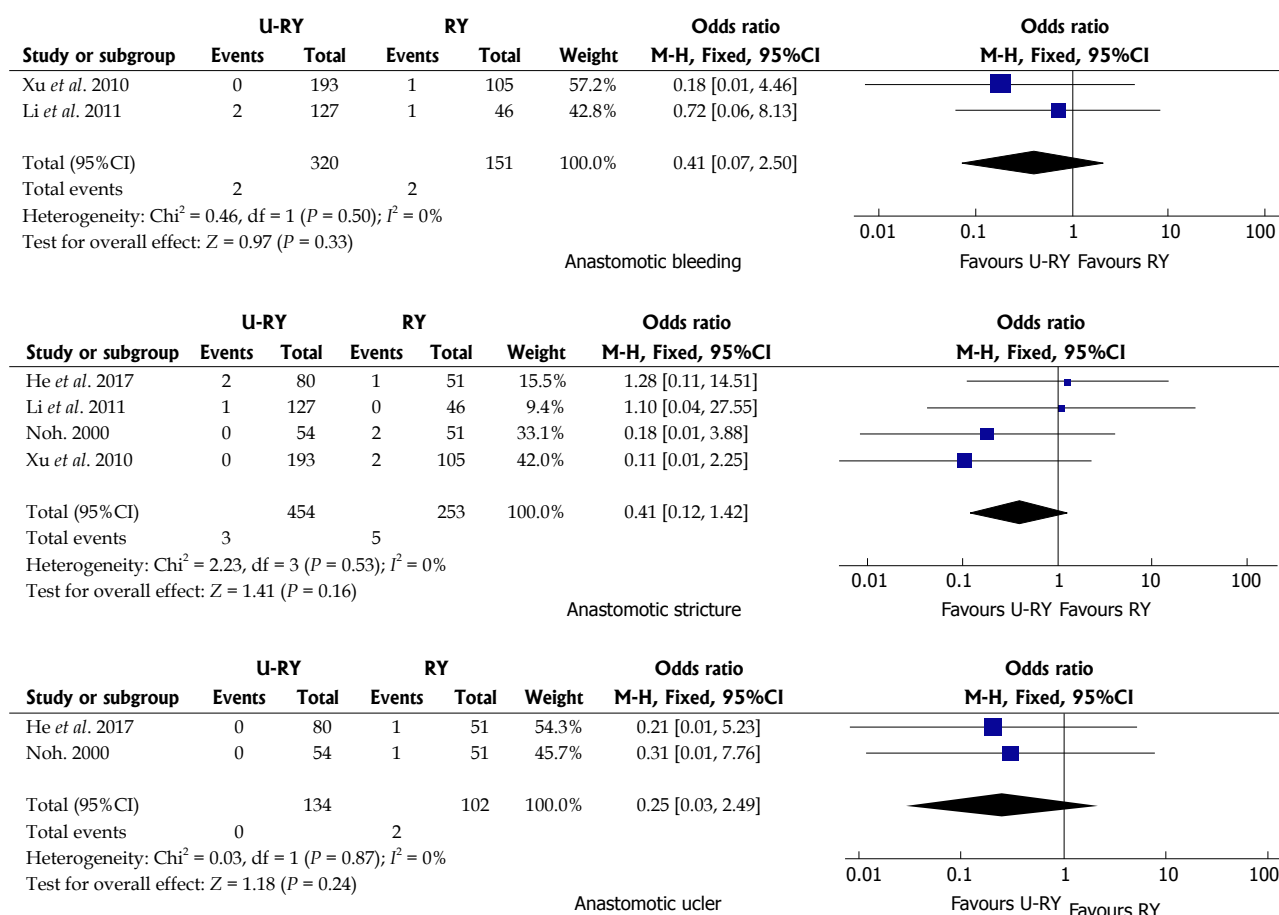


Figure 3 Meta-analysis forest plots concerning anastomotic bleeding, anastomotic stricture, and anastomotic ulcer.

found in the intraoperative blood loss between the two groups largely due to the smaller sample size of the included studies. The traditional RY anastomosis required cutting off the bowel, even separating off the part of the mesentery and handling the mesenteric vessels, thereby increasing the difficulty in the operation. Thus, U-RY had an advantage in shortening the operative time.

### Postoperative complications

The postoperative complication was an important outcome to assess the safety of the operation type. This study found that U-RY reconstruction had an advantage in reducing the incidence of reflux gastritis/esophagitis, delayed gastric emptying, and Roux stasis syndrome, whereas no significant advantage was found in preventing anastomotic bleeding, stricture, and ulcer.

Noh *et al.*<sup>[15]</sup> reported that Roux stasis syndrome, alkaline reflux gastritis, and esophagitis were significantly reduced in the U-RY reconstruction compared with the conventional RY reconstruction. In their study, the incidence of Roux stasis syndrome was 18.5% in the uncut RY group (10 out of 51 patients) and 37.3% in the conventional RY group (19 out of 51 patients). A recent clinical study by Park and Kim<sup>[19]</sup> indicated that, according to postoperative endoscopic findings, U-RY anastomosis had advantages in improving gastritis, duodenal secretion reflux, and gastric residue. Thus,

they claimed that U-RY was superior to conventional RY gastrojejunostomy in keeping the function of the gastric remnants. Ma<sup>[29]</sup> reported that the U-RY anastomosis reduced the occurrences of stasis syndrome because the jejunum was transversed while preserving the advantages of RY surgery. The aforementioned opinions were consistent with the conclusion of the present study.

The present study suggested that the bile and pancreatic juice were forced into the efferent jejunal limb through the Braun anastomosis between the afferent and efferent jejunal limbs because the afferent jejunal limb near the gastrointestinal anastomosis was closed. The smaller bile and pancreatic juice could be refluxed to the residual stomach. Hence, U-RY reconstruction could prevent reflux gastritis and esophagitis. The U-RY reconstruction could effectively prevent delayed gastric emptying and Roux stasis syndrome by preserving jejunum continuity, integrity of myoelectrical conduction, direction of muscle contraction in the gastrointestinal tract, and normal intestinal peristalsis<sup>[30,31]</sup>. No significant difference was found in anastomosis-related complications between the two groups. It might be due mainly to the use of gastrointestinal stapling devices and the refinement of technique. Theoretically, the U-RY anastomosis maintained mesenteric continuity and ensured good perfusion of the anastomotic site. Therefore, it could reduce the formation of anastomotic

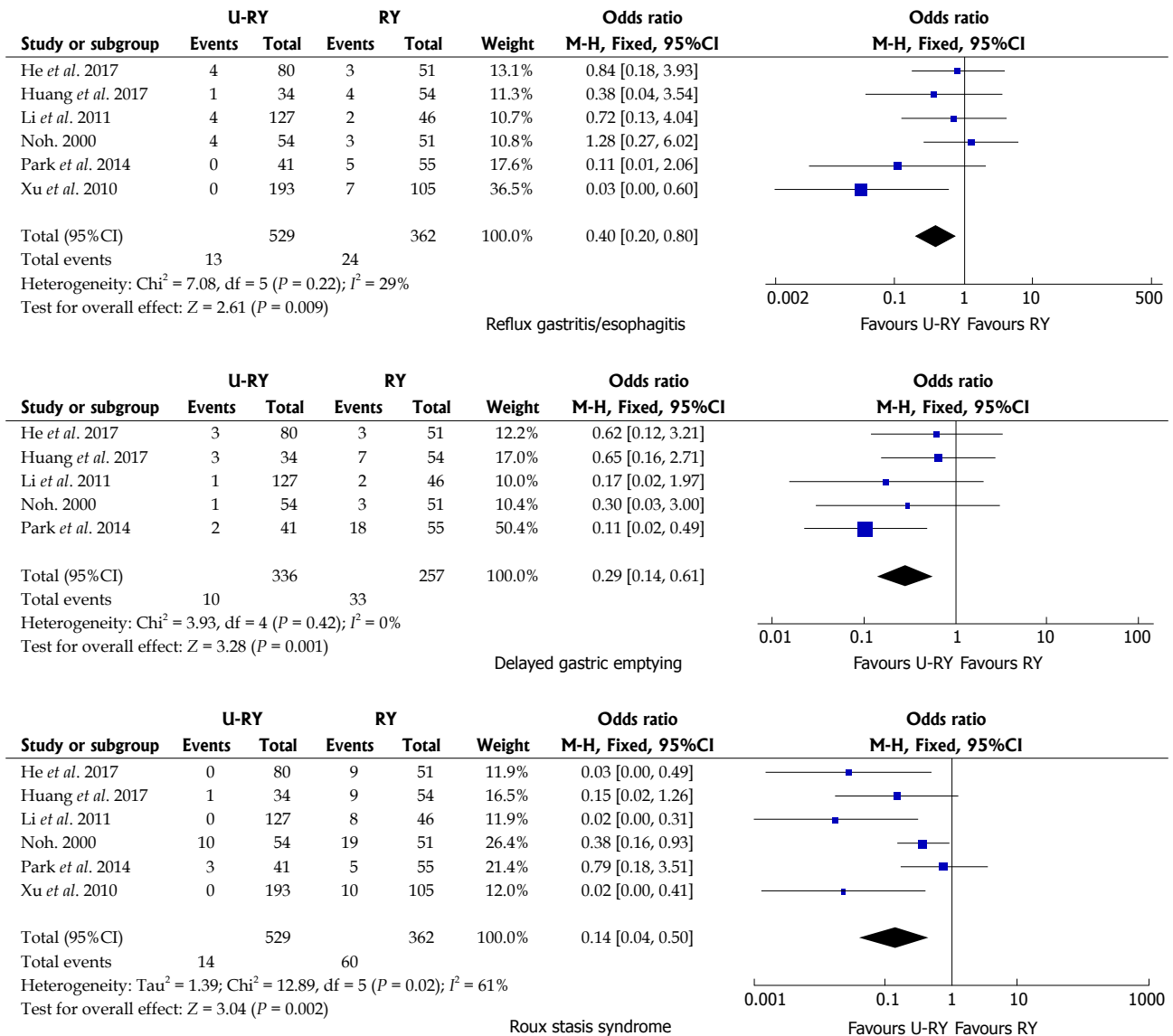


Figure 4 Meta-analysis forest plots concerning reflux gastritis/esophagitis, delayed gastric emptying, and Roux stasis syndrome.

stenosis. However, further clinical studies are still needed to verify the aforementioned conclusions.

### Postoperative nutritional status

Only two studies evaluated the changes in the nutritional status at 1 year of follow-up after surgery. The levels of serum hemoglobin, serum total protein, and serum albumin were calculated to assess the nutritional status. The present meta-analysis revealed that two reconstructive procedures showed similar changes in serum hemoglobin and total protein levels. However, the level of serum albumin was higher in the U-RY group than in the RY group. However, several important outcomes, including cholesterol, triglyceride, and body weight, were not reported adequately in the included studies. Therefore, postoperative nutritional status could not be fully assessed due to lack of sufficient data. Consequently, further clinical studies, including various nutritional indicators and long follow-up, to assess the

nutritional status after the U-RY procedure are required to validate the findings.

### Recanalization and its countermeasures

Related studies<sup>[25-28]</sup> reported the occurrence of recanalization at the site of afferent closure after U-RY reconstruction, which may increase the incidence of alkaline reflux gastritis and esophagitis and decrease quality of life. Yang *et al.*<sup>[31]</sup> concluded in their study that the incidence of partial recanalization after U-RY reconstruction reached 13.0%. In the included literature, three articles mentioned the problem of recanalization of the obliterated afferent jejunal limb. No recanalization was found in the two studies<sup>[18,19]</sup> after follow-up for 6 mo and 1 year, respectively. However, the incidence of recanalization at 1 and 2 years after surgery in one study<sup>[20]</sup> was 2.9% and 5.9%, respectively. Some modified procedures were used that could reinforce the occlusion and reduce the recanalization rate. These

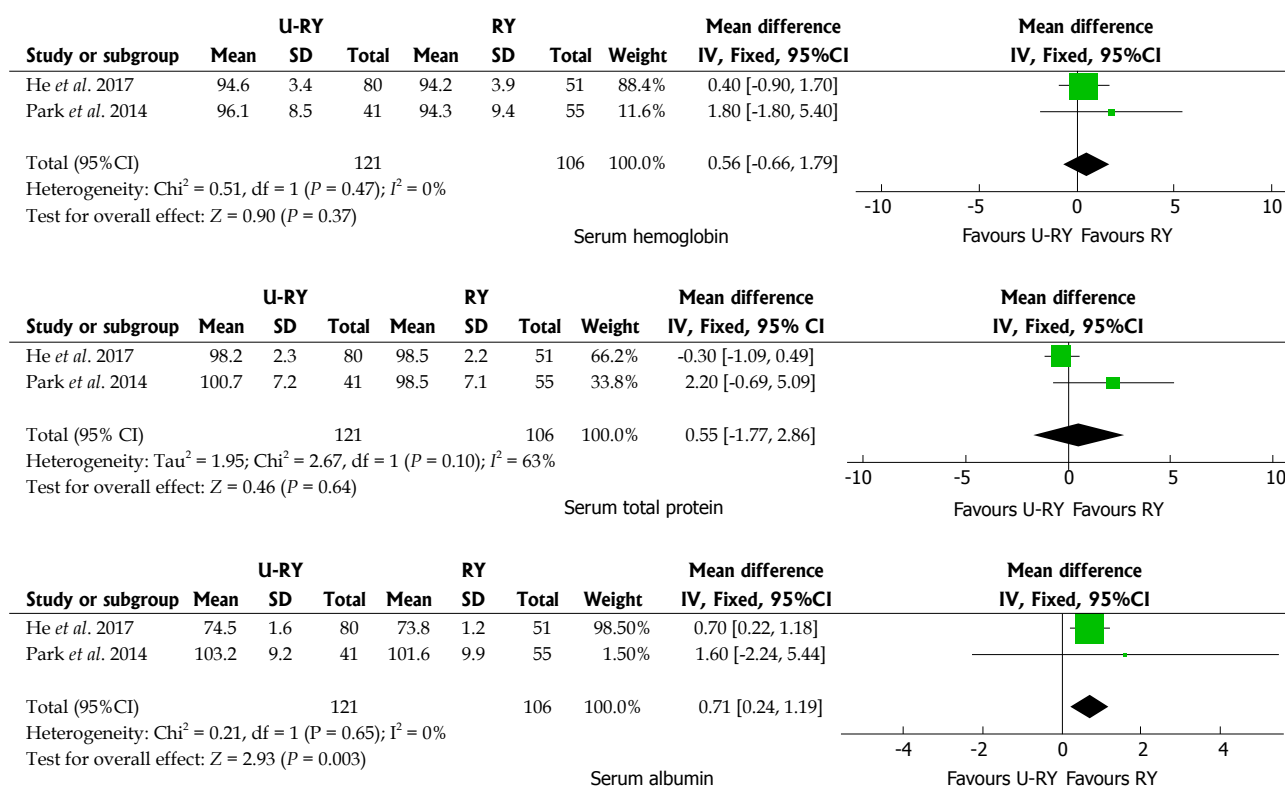


Figure 5 Meta-analysis forest plots concerning serum hemoglobin, serum total protein, and serum albumin.

Table 7 Outcomes of sensitivity analysis

Sensitivity analysis	Heterogeneity test		Overall effect	
	$I^2$ (%)	$\tau^2$	OR/WMD and 95%CI	$P$ value
Operative time				
Include all studies	84	62.60	-12.95 (-22.29 to -3.61)	0.007
Exclude "He <i>et al.</i> 2017"	81	142.92	-20.41 (-36.14 to -4.68)	0.01
Exclude "Huang <i>et al.</i> 2017"	88	70.94	-12.75 (-23.99 to -1.52)	0.03
Exclude "Park <i>et al.</i> 2014"	69	18.50	-8.03 (-14.13 to -1.94)	0.01
Exclude "Li <i>et al.</i> 2011"	88	235.46	-19.13 (-38.42 to 0.16)	0.05
Intraoperative blood loss				
Include all studies	90	1798.47	-46.38 (-91.93 to -0.83)	0.05
Exclude "He <i>et al.</i> 2017"	92	3010.33	-69.86 (-136.73 to -2.99)	0.04
Exclude "Huang <i>et al.</i> 2017"	93	4274.27	-60.75 (-139.17 to 17.68)	0.13
Exclude "Park <i>et al.</i> 2014"	65	259.64	-15.15 (-37.95 to 7.64)	0.19
Exclude "Li <i>et al.</i> 2011"	93	2690.80	-64.63 (-127.90 to -1.37)	0.05
Hospital stay				
Include all studies	69	0.65	-0.71 (-1.69 to 0.27)	0.16
Exclude "Huang <i>et al.</i> 2017"	9	0.03	-1.22 (-1.71 to -0.73)	< 0.00001

CI: Confidence interval; OR: Odds ratio; WMD: Weighted mean differences.

include using nonbladed six-row linear staplers to staple<sup>[32]</sup>, using four or five seromuscular stitches annularly around the jejunal wall with tightly tied 3-0 polypropylene<sup>[33]</sup>, and suturing the serosal layers of the upper and lower jejunum at the occlusion site after the ligation of the jejunum<sup>[34]</sup>. This study recommended improving the jejunal occlusion method to ensure that jejunal occlusion was permanently closed but not transected.

In conclusion, the present meta-analysis indicated that U-RY reconstruction after DG for gastric cancer was

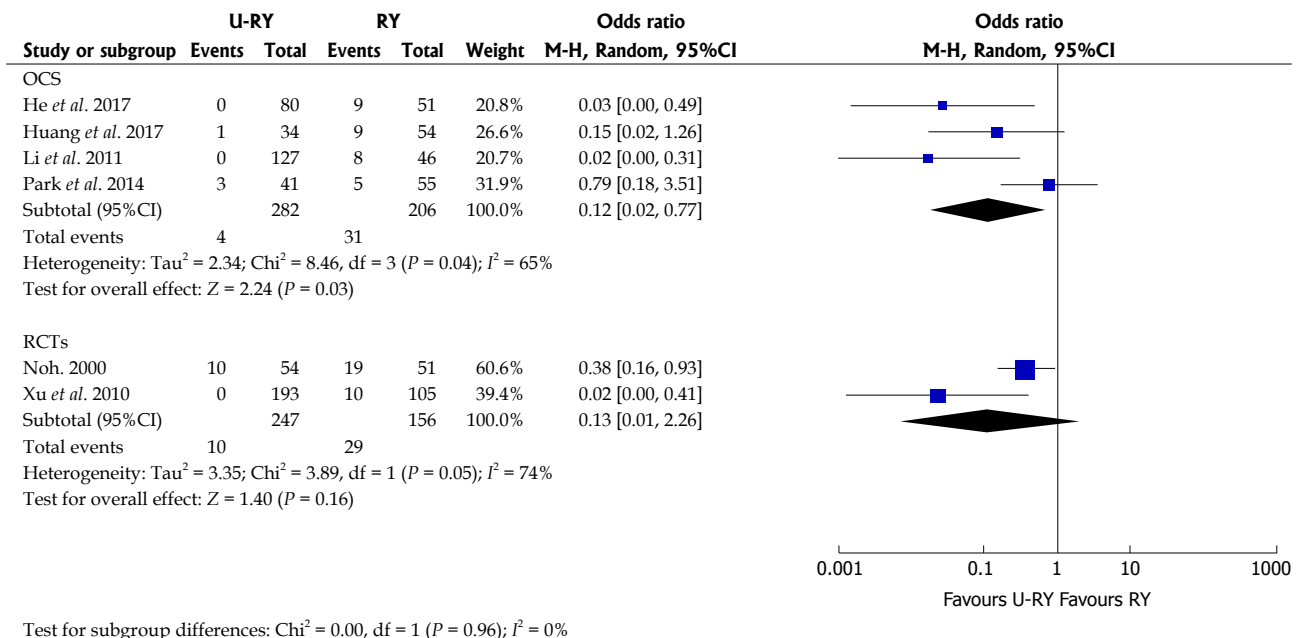
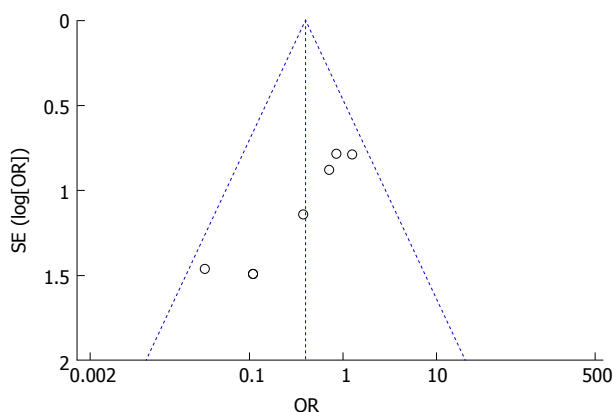
secure and feasible. It has several advantages, such as shorter operative time and reduced incidence of reflux gastritis/esophagitis, delayed gastric emptying, and Roux stasis syndrome. However, this study also had several limitations. Only two RCTs were included, and the relatively small sample size likely had a certain effect on the results. Lastly, the studies included were only single-center studies conducted in China and Korea. Therefore, high-quality RCTs in multiple centers are still needed for further confirmation of our findings.



**Table 8** Subgroup analyses of studies with laparoscopic technique and different definitions

Outcome of interest	Studies	Patients (n)	OR/WMD	95%CI	P value
Laparoscopic/laparoscopy-assisted					
Operative time	2	184	-31.76	-68.04, 4.51	0.09
Intraoperative blood loss	2	184	-115.14	-283.34, 53.06	0.18
Hospital stay	2	184	0.48	-0.62, 1.57	0.39
Reflux gastritis/esophagitis	2	184	0.22	0.04, 1.23	0.08
Delayed gastric emptying	2	184	0.27	0.04, 1.62	0.15
Roux stasis syndrome	2	184	0.39	0.12, 1.23	0.11
Definition A					
Reflux gastritis/esophagitis	2	304	0.79	0.25, 2.49	0.68
Definition B					
Delayed gastric emptying	1	131	0.62	0.12, 3.21	0.57
Definition C					
Delayed gastric emptying	1	173	0.17	0.02, 1.97	0.16
Definition D					
Roux stasis syndrome	3	409	0.08	0.01, 0.85	0.04

CI: Confidence interval; OR: Odds ratio; WMD: Weighted mean differences.

**Figure 6** Subgroup analyses of observational clinical studies and randomized controlled trials.**Figure 7** Funnel plot of reflux gastritis/esophagitis rate in all included studies.**ARTICLE HIGHLIGHTS****Research background**

Gastric cancer is the fourth most common cancer worldwide and the third most frequent cause of death from cancer. At present, the choice of gastrointestinal reconstruction after distal gastrectomy (DG) for gastric cancer remains controversial. Uncut Roux-en-Y (U-RY) reconstruction is an improvement of the Roux-en-Y (RY) reconstruction, which is a promising method that may replace the previous type of anastomosis. This systematic review and meta-analysis aimed to compare the clinical efficacy and safety of U-RY vs RY reconstruction after DG for gastric cancer.

**Research motivation**

A method of digestive tract reconstruction called "U-RY anastomosis" was first proposed in 1988. It has been a research hotspot for years since then. Some surgeons consider U-RY reconstruction superior to RY reconstruction, while others do not. Therefore, its use remains controversial.

## Research objectives

This novel meta-analysis compared U-RY and RY reconstruction after DG for gastric cancer. It compared U-RY and RY reconstruction in terms of perioperative outcomes, postoperative complications, and postoperative nutritional status.

## Research methods

A literature search was conducted to identify studies comparing U-RY with RY after DG for gastric cancer. Using either fixed- or random-effects models, pooled odds ratios or weighted mean difference with 95% confidence interval was calculated. Meta-analyses were performed using RevMan 5.3 software.

## Research results

Some clinical advantages were provided by U-RY reconstruction, such as shorter operative time and lowered incidence of reflux gastritis/esophagitis, delayed gastric emptying, and Roux stasis syndrome.

## Research conclusions

The present study showed that U-RY reconstruction after DG for gastric cancer was secure and feasible, providing a guideline for clinical practice. However, high-quality RCTs in multiple centers are still needed for further confirmation.

## Research perspectives

U-RY anastomosis maintained mesenteric continuity and ensured good perfusion of the anastomotic site. It could reduce the formation of anastomotic stenosis.

## REFERENCES

- 1 **Parkin DM**, Bray F, Ferlay J, Pisani P. Global cancer statistics, 2002. *CA Cancer J Clin* 2005; **55**: 74-108 [PMID: 15761078 DOI: 10.3322/canjclin.55.2.74]
- 2 **Torre LA**, Bray F, Siegel RL, Ferlay J, Lortet-Tieulent J, Jemal A. Global cancer statistics, 2012. *CA Cancer J Clin* 2015; **65**: 87-108 [PMID: 25651787 DOI: 10.3322/caac.21262]
- 3 **Orditura M**, Galizia G, Sforza V, Gambardella V, Fabozzi A, Laterza MM, Andreozzi F, Ventriglia J, Savastano B, Mabilia A, Lieto E, Ciardiello F, De Vita F. Treatment of gastric cancer. *World J Gastroenterol* 2014; **20**: 1635-1649 [PMID: 24587643 DOI: 10.3748/wjg.v20.i7.1635]
- 4 **Piessen G**, Triboulet JP, Mariette C. Reconstruction after gastrectomy: which technique is best? *J Visc Surg* 2010; **147**: e273-e283 [PMID: 20934934 DOI: 10.1016/j.jvisurg.2010.09.004]
- 5 **Hirao M**, Takiguchi S, Imamura H, Yamamoto K, Kurokawa Y, Fujita J, Kobayashi K, Kimura Y, Mori M, Doki Y; Osaka University Clinical Research Group for Gastroenterological Study. Comparison of Billroth I and Roux-en-Y reconstruction after distal gastrectomy for gastric cancer: one-year postoperative effects assessed by a multi-institutional RCT. *Ann Surg Oncol* 2013; **20**: 1591-1597 [PMID: 23104705 DOI: 10.1245/s10434-012-2704-9]
- 6 **Hoya Y**, Mitsumori N, Yanaga K. The advantages and disadvantages of a Roux-en-Y reconstruction after a distal gastrectomy for gastric cancer. *Surg Today* 2009; **39**: 647-651 [PMID: 19639429 DOI: 10.1007/s00595-009-3964-2]
- 7 **In Choi C**, Baek DH, Lee SH, Hwang SH, Kim DH, Kim KH, Jeon TY, Kim DH. Comparison Between Billroth-II with Braun and Roux-en-Y Reconstruction After Laparoscopic Distal Gastrectomy. *J Gastrointest Surg* 2016; **20**: 1083-1090 [PMID: 27067234 DOI: 10.1007/s11605-016-3138-7]
- 8 **Shim JH**, Oh SI, Yoo HM, Jeon HM, Park CH, Song KY. Roux-en-Y gastrojejunostomy after totally laparoscopic distal gastrectomy: comparison with Billroth II reconstruction. *Surg Laparosc Endosc Percutan Tech* 2014; **24**: 448-451 [PMID: 24710243 DOI: 10.1097/SLE.0b013e31829014ea]
- 9 **Xiong JJ**, Altaf K, Javed MA, Nunes QM, Huang W, Mai G, Tan CL, Mukherjee R, Sutton R, Hu WM, Liu XB. Roux-en-Y versus Billroth I reconstruction after distal gastrectomy for gastric cancer: a meta-analysis. *World J Gastroenterol* 2013; **19**: 1124-1134 [PMID: 23467403 DOI: 10.3748/wjg.v19.i7.1124]
- 10 **Zong L**, Chen P. Billroth I vs. Billroth II vs. Roux-en-Y following distal gastrectomy: a meta-analysis based on 15 studies. *Hepatogastroenterology* 2011; **58**: 1413-1424 [PMID: 21937419 DOI: 10.5754/hge10567]
- 11 **Van Stiegmann G**, Goff JS. An alternative to Roux-en-Y for treatment of bile reflux gastritis. *Surg Gynecol Obstet* 1988; **166**: 69-70 [PMID: 3336817]
- 12 **Mon RA**, Cullen JJ. Standard Roux-en-Y gastrojejunostomy vs. "uncut" Roux-en-Y gastrojejunostomy: a matched cohort study. *J Gastrointest Surg* 2000; **4**: 298-303 [PMID: 10769093 DOI: 10.1016/S1091-255X(00)80079-7]
- 13 **Jadad AR**, Moore RA, Carroll D, Jenkinson C, Reynolds DJ, Gavaghan DJ, McQuay HJ. Assessing the quality of reports of randomized clinical trials: is blinding necessary? *Control Clin Trials* 1996; **17**: 1-12 [PMID: 8721797 DOI: 10.1016/0197-2456(95)00134-4]
- 14 **Stang A**. Critical evaluation of the Newcastle-Ottawa scale for the assessment of the quality of nonrandomized studies in meta-analyses. *Eur J Epidemiol* 2010; **25**: 603-605 [PMID: 20652370 DOI: 10.1007/s10654-010-9491-z]
- 15 **Noh SM**. Improvement of the Roux limb function using a new type of "uncut Roux" limb. *Am J Surg* 2000; **180**: 37-40 [PMID: 11036137 DOI: 10.1016/S0002-9610(00)00421-9]
- 16 **Xu J**, Ye Z Y, Wang Y Y, Shao Q S, Sun Y S, Zhao Z K. Application of uncut Roux-en-Y anastomosis in radical distal gastrectomy for gastric carcinoma. *Zhejiang Yixue* 2010; **32**: 1325-1326, 1332 [DOI: 10.3969/j.issn.1006-2785.2010.09.013]
- 17 **He SQ**, Luo YC, Zeng DQ, Li XW. Effect of uncut Roux-en-Y Reconstruction after Distal Gastrectomy for Gastric Cancer. *Medical Innovation of China* 2017; **14**: 127-130
- 18 **Li FX**, Zhang RP, Zhao JZ, Wang XJ, Xue Q, Liang H. [Use of uncut Roux-en-Y reconstruction after distal gastrectomy for gastric cancer]. *Zhonghua Wei Chang Wai Ke Za Zhi* 2011; **14**: 411-414 [PMID: 21713697 DOI: 10.3760/cma.j.issn.1671-0274.2011.06.006]
- 19 **Park JY**, Kim YJ. Uncut Roux-en-Y Reconstruction after Laparoscopic Distal Gastrectomy Can Be a Favorable Method in Terms of Gastritis, Bile Reflux, and Gastric Residue. *J Gastric Cancer* 2014; **14**: 229-237 [PMID: 25580354 DOI: 10.5230/jgc.2014.14.4.229]
- 20 **Huang Y**. A Comparative Study of Uncut Roux-en-Y and Traditional Roux-en-Y Anastomosis after Distal Gastrectomy for Gastric Cancer. *MSc Thesis* 2017. Available from: URL: <http://kns.cnki.net/kns/detail/detail.aspx?FileName=1017124843.nh&DbName=CMFDTEMP>
- 21 **Huang Y**, Wang S, Shi Y, Tang D, Wang W, Chong Y, Zhou H, Xiong Q, Wang J, Wang D. Uncut Roux-en-Y reconstruction after distal gastrectomy for gastric cancer. *Expert Rev Gastroenterol Hepatol* 2016; **10**: 1341-1347 [PMID: 27748146 DOI: 10.1080/17474124.2016.1248404]
- 22 **Kim CH**, Song KY, Park CH, Seo YJ, Park SM, Kim JJ. A comparison of outcomes of three reconstruction methods after laparoscopic distal gastrectomy. *J Gastric Cancer* 2015; **15**: 46-52 [PMID: 25861522 DOI: 10.5230/jgc.2015.15.1.46]
- 23 **Lee MS**, Ahn SH, Lee JH, Park DJ, Lee HJ, Kim HH, Yang HK, Kim N, Lee WW. What is the best reconstruction method after distal gastrectomy for gastric cancer? *Surg Endosc* 2012; **26**: 1539-1547 [PMID: 22179454 DOI: 10.1007/s00464-011-2064-8]
- 24 **Yun SC**, Choi HJ, Park JY, Kim YJ. Total laparoscopic uncut Roux-en-Y gastrojejunostomy after distal gastrectomy. *Am Surg* 2014; **80**: E51-E53 [PMID: 24480200]
- 25 **Shibata C**, Kakyo M, Kinouchi M, Tanaka N, Miura K, Naitoh T, Ogawa H, Yazaki N, Haneda S, Watanabe K, Sasaki I. Results of modified uncut Roux-en-Y reconstruction after distal gastrectomy for gastric cancer. *Hepatogastroenterology* 2013; **60**: 1797-1799 [PMID: 24634948]
- 26 **Tu BN**, Sarr MG, Kelly KA. Early clinical results with the uncut Roux reconstruction after gastrectomy: limitations of the stapling technique. *Am J Surg* 1995; **170**: 262-264 [PMID: 7661294 DOI: 10.1016/j.amjsurg.1995.05.010]

- 10.1016/S0002-9610(05)80011-X]
- 27 **Richardson WS**, Spivak H, Hudson JE, Budacz MA, Hunter JG. Teflon buttress inhibits recanalization of uncut stapled bowel. *J Gastrointest Surg* 2000; **4**: 424-429 [PMID: 11058862 DOI: 10.1016/S1091-255X(00)80023-2]
  - 28 **Morton JM**, Lucktong TA, Trasti S, Farrell TM. Bovine pericardium buttress limits recanalization of the uncut Roux-en-Y in a porcine model. *J Gastrointest Surg* 2004; **8**: 127-131 [PMID: 14746845 DOI: 10.1016/j.gassur.2003.09.024]
  - 29 **Ma JJ**, Zang L, Yang A, Hu WG, Feng B, Dong F, Wang ML, Lu AG, Li JW, Zheng MH. A modified uncut Roux-en-Y anastomosis in totally laparoscopic distal gastrectomy: preliminary results and initial experience. *Surg Endosc* 2017; **31**: 4749-4755 [PMID: 28411343 DOI: 10.1007/s00464-017-5551-8]
  - 30 **Zhang YM**, Liu XL, Xue DB, Wei YW, Yun XG. Myoelectric activity and motility of the Roux limb after cut or uncut Roux-en-Y gastrojejunostomy. *World J Gastroenterol* 2006; **12**: 7699-7704 [PMID: 17171803 DOI: 10.3748/wjg.v12.i47.7699]
  - 31 **Yang D**, He L, Tong WH, Jia ZF, Su TR, Wang Q. Randomized controlled trial of uncut Roux-en-Y vs Billroth II reconstruction after distal gastrectomy for gastric cancer: Which technique is better for avoiding biliary reflux and gastritis? *World J Gastroenterol* 2017; **23**: 6350-6356 [PMID: 28974902 DOI: 10.3748/wjg.v23.i34.6350]
  - 32 **Uyama I**, Sakurai Y, Komori Y, Nakamura Y, Syoji M, Tonomura S, Yoshida I, Masui T, Inaba K, Ochiai M. Laparoscopy-assisted uncut Roux-en-Y operation after distal gastrectomy for gastric cancer. *Gastric Cancer* 2005; **8**: 253-257 [PMID: 16328601 DOI: 10.1007/s10120-005-0344-5]
  - 33 **Jangjoo A**, Mehrabi Bahar M, Aliakbarian M. Uncut Roux-en-y esophagojejunostomy: A new reconstruction technique after total gastrectomy. *Indian J Surg* 2010; **72**: 236-239 [PMID: 23133254 DOI: 10.1007/s12262-010-0059-7]
  - 34 **Sun YS**, Ye ZY, Shao QS, Zhang Q, Xu XD, Hu JF, Shi D. [The application of uncut Roux-en-Y esophagojejunostomy with distal jejunal pouch on behalf of the stomach surgery in the digestive tract reconstruction after total gastrectomy]. *Zhonghua Wai Ke Za Zhi* 2012; **50**: 699-703 [PMID: 23157901]

**P- Reviewer:** Chen L, Noshiro H, Wang YH **S- Editor:** Wang XJ  
**L- Editor:** Filipodia **E- Editor:** Yin SY





Published by **Baishideng Publishing Group Inc**  
7901 Stoneridge Drive, Suite 501, Pleasanton, CA 94588, USA  
Telephone: +1-925-223-8242  
Fax: +1-925-223-8243  
E-mail: [bpgoffice@wjgnet.com](mailto:bpgoffice@wjgnet.com)  
Help Desk: <http://www.f6publishing.com/helpdesk>  
<http://www.wjgnet.com>



ISSN 1007-9327

