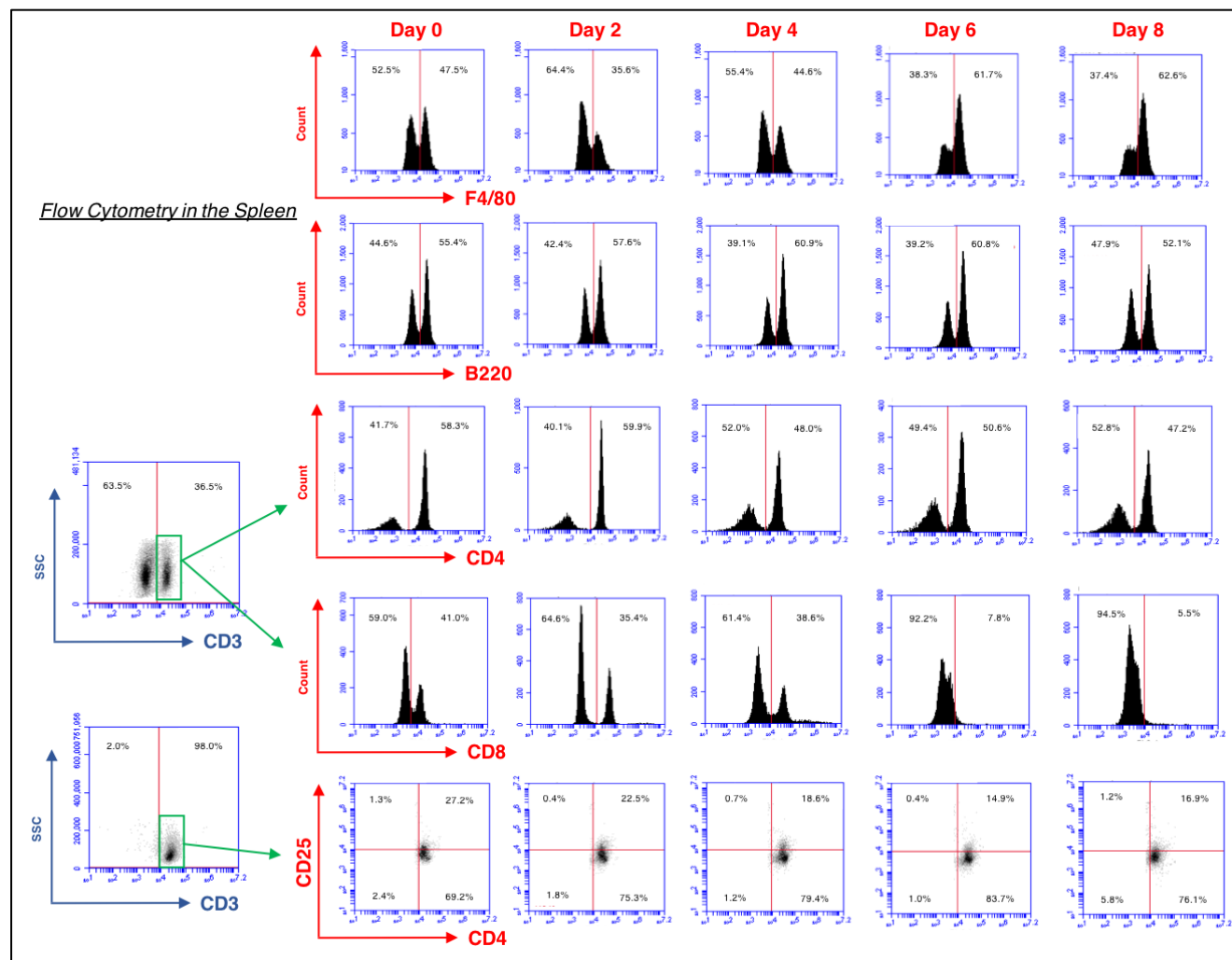


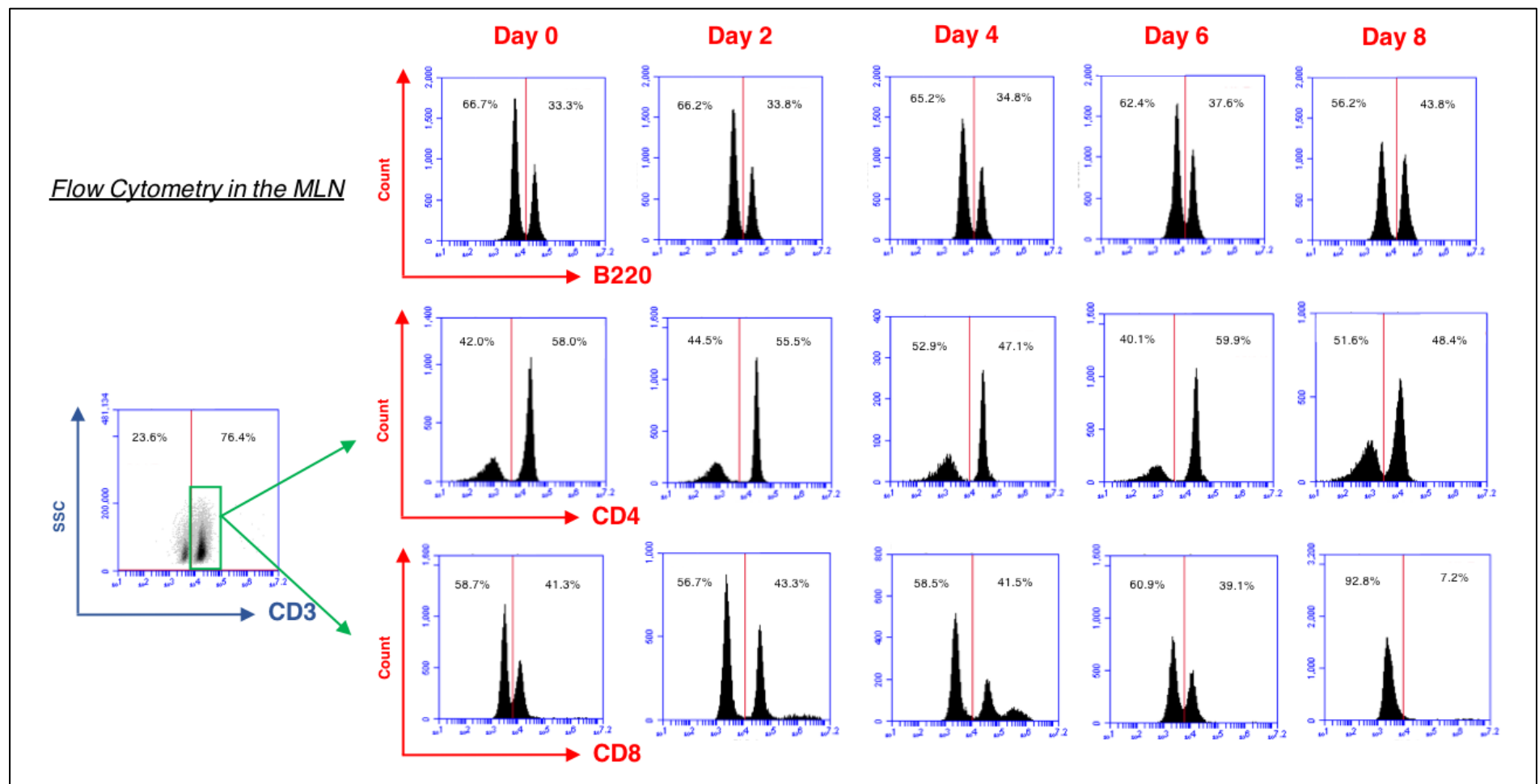
Supplementary Figure 1. Colonic proteomic analysis from 3% DSS time course. Individual graphs for each CCTF (cytokines, chemokines and trophic factors) analyzed through multiplex assay from colon samples of 3% DSS at different time points. One-way

ANOVA followed by Dunnett post-hoc test. * $p < 0.05$ compared to control (day 0).

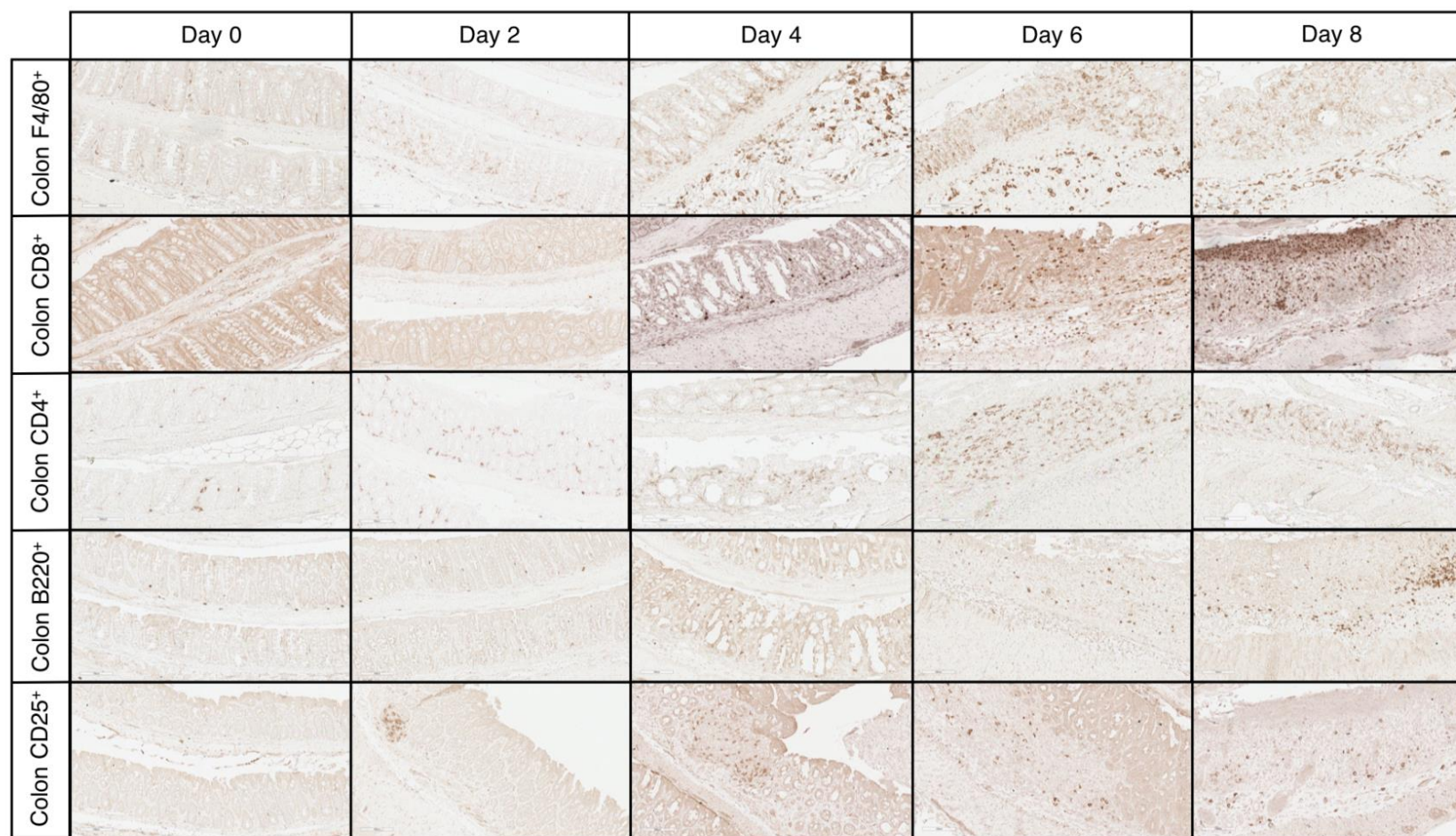


Supplementary Figure 2. Immune cell profile in the spleen of 3% DSS animals. Representative gating of flow cytometry

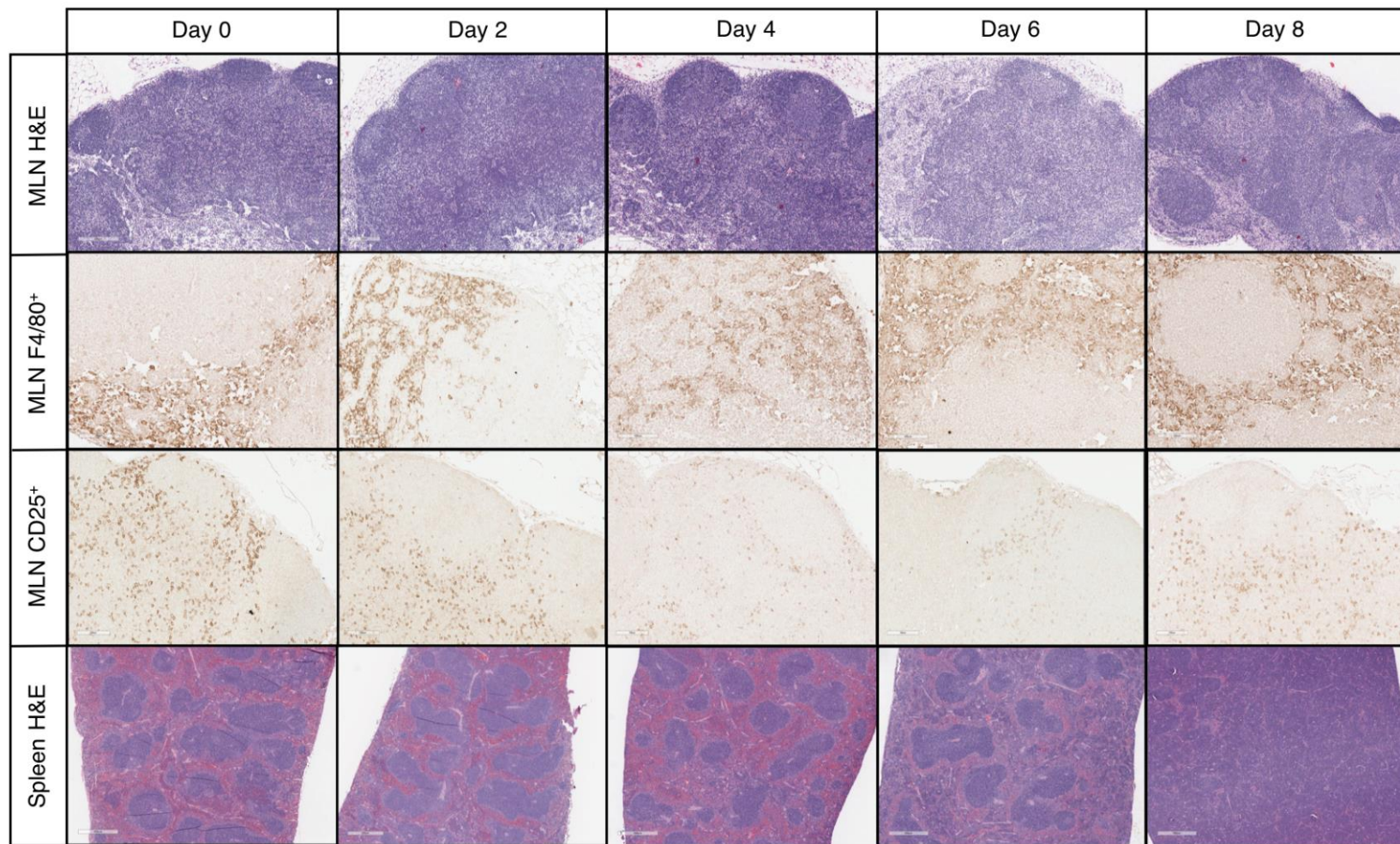
performed at different time points in the spleen of 3% DSS animals. F4/80⁺ macrophages and CD3⁺CD4⁺CD25⁺ T regulatory cells were enriched through magnetic separation before flow cytometry analysis.



Supplementary Figure 3. Immune cell profile in the MLN of 3% DSS animals. Representative gating of flow cytometry performed at different time points in the MLN of 3% DSS animals.



Supplementary Figure 4. IHC of immune cell profile in the colon of 3% DSS animals. Colon samples were collected at different time points and IHC was performed for temporal analysis of immune cells' profile (F4/80⁺, CD8⁺, CD4⁺, B220⁺, CD25⁺).



Supplementary Figure 5. IHC and/or H&E of immune cell profile in the MLN and spleen of 3% DSS animals. MLN samples

were collected at different time points and analyzed through immunohistochemistry for F4/80⁺ and CD25⁺. H&E images do not show major differences in morphology, except on days 6 and 8, where it appears to have fewer immune cells present. Spleen was significantly enlarged at days 6 and 8, where it appears to have increased immune cell presence towards the end of 8 days. N = 4/each time point.