

# World Journal of *Gastroenterology*

*World J Gastroenterol* 2019 January 21; 25(3): 282-397



**EDITORIAL**

- 282** Chronic hepatitis B and metabolic risk factors: A call for rigorous longitudinal studies  
*Seto WK*

**REVIEW**

- 287** Roles of  $\text{Na}^+/\text{Ca}^{2+}$  exchanger 1 in digestive system physiology and pathophysiology  
*Liao QS, Du Q, Lou J, Xu JY, Xie R*

**MINIREVIEWS**

- 300** Endoscopic resection techniques for colorectal neoplasia: Current developments  
*Dumoulin FL, Hildenbrand R*
- 308** Elastography-based screening for esophageal varices in patients with advanced chronic liver disease  
*Paternostro R, Reiberger T, Bucsics T*

**ORIGINAL ARTICLE****Basic Study**

- 330** NKX6.3 protects against gastric mucosal atrophy by downregulating  $\beta$ -amyloid production  
*Yoon JH, Lee YS, Kim O, Ashktorab H, Smoot DT, Nam SW, Park WS*
- 346** Effects of positive acceleration (+Gz stress) on liver enzymes, energy metabolism, and liver histology in rats  
*Shi B, Wang XQ, Duan WD, Tan GD, Gao HJ, Pan YW, Guo QJ, Zhang HY*

**Retrospective Study**

- 356** Incidence and treatment of mediastinal leakage after esophagectomy: Insights from the multicenter study on mediastinal leaks  
*Fumagalli U, Baiocchi GL, Celotti A, Parise P, Cossu A, Bonavina L, Bernardi D, de Manzoni G, Weindelmayer J, Verlato G, Santi S, Pallabazzer G, Portolani N, Degiuli M, Reddavid R, de Pascale S*
- 367** Predicting gastroesophageal varices through spleen magnetic resonance elastography in pediatric liver fibrosis  
*Yoon H, Shin HJ, Kim MJ, Han SJ, Koh H, Kim S, Lee MJ*

**Observational Study**

- 378** Differential hepatic features presenting in Wilson disease-associated cirrhosis and hepatitis B-associated cirrhosis  
*Zhong HJ, Sun HH, Xue LF, McGowan EM, Chen Y*

**Prospective Study**

- 388** Do patients with gastroesophageal reflux disease and somatoform tendencies benefit from antireflux surgery?

*Fuchs HF, Babic B, Fuchs KH, Breithaupt W, Varga G, Musial F*

**ABOUT COVER**

Editorial board member of *World Journal of Gastroenterology*, Maria Gazouli, PhD, Associate Professor, Department of Basic Medical Sciences, Laboratory of Biology, Medical School, National and Kapodistrian University of Athens, Athens 11527, Greece

**AIMS AND SCOPE**

*World Journal of Gastroenterology* (*World J Gastroenterol*, *WJG*, print ISSN 1007-9327, online ISSN 2219-2840, DOI: 10.3748) is a peer-reviewed open access journal. The *WJG* Editorial Board consists of 642 experts in gastroenterology and hepatology from 59 countries.

The primary task of *WJG* is to rapidly publish high-quality original articles, reviews, and commentaries in the fields of gastroenterology, hepatology, gastrointestinal endoscopy, gastrointestinal surgery, hepatobiliary surgery, gastrointestinal oncology, gastrointestinal radiation oncology, etc. *WJG* is dedicated to become an influential and prestigious journal in gastroenterology and hepatology, to promote the development of above disciplines, and to improve the diagnostic and therapeutic skill and expertise of clinicians.

**INDEXING/ABSTRACTING**

*World Journal of Gastroenterology* (*WJG*) is now indexed in Current Contents®/Clinical Medicine, Science Citation Index Expanded (also known as SciSearch®), Journal Citation Reports®, Index Medicus, MEDLINE, PubMed, PubMed Central and Directory of Open Access Journals. The 2018 edition of Journal Citation Report® cites the 2017 impact factor for *WJG* as 3.300 (5-year impact factor: 3.387), ranking *WJG* as 35<sup>th</sup> among 80 journals in gastroenterology and hepatology (quartile in category Q2).

**RESPONSIBLE EDITORS FOR THIS ISSUE**

Responsible Electronic Editor: Yan Huang

Proofing Editorial Office Director: Ze-Mao Gong

**NAME OF JOURNAL***World Journal of Gastroenterology***ISSN**

ISSN 1007-9327 (print) ISSN 2219-2840 (online)

**LAUNCH DATE**

October 1, 1995

**FREQUENCY**

Weekly

**EDITORS-IN-CHIEF**

Subrata Ghosh, Andrzej S Tarnawski

**EDITORIAL BOARD MEMBERS**<http://www.wjgnet.com/1007-9327/editorialboard.htm>**EDITORIAL OFFICE**

Ze-Mao Gong, Director

**PUBLICATION DATE**

January 21, 2019

**COPYRIGHT**

© 2019 Baishideng Publishing Group Inc

**INSTRUCTIONS TO AUTHORS**<https://www.wjgnet.com/bpg/gerinfo/204>**GUIDELINES FOR ETHICS DOCUMENTS**<https://www.wjgnet.com/bpg/GerInfo/287>**GUIDELINES FOR NON-NATIVE SPEAKERS OF ENGLISH**<https://www.wjgnet.com/bpg/gerinfo/240>**PUBLICATION MISCONDUCT**<https://www.wjgnet.com/bpg/gerinfo/208>**ARTICLE PROCESSING CHARGE**<https://www.wjgnet.com/bpg/gerinfo/242>**STEPS FOR SUBMITTING MANUSCRIPTS**<https://www.wjgnet.com/bpg/GerInfo/239>**ONLINE SUBMISSION**<https://www.f6publishing.com>





## Basic Study

# NKX6.3 protects against gastric mucosal atrophy by downregulating $\beta$ -amyloid production

Jung Hwan Yoon, Yeon Soo Lee, Olga Kim, Hassan Ashktorab, Duane T Smoot, Suk Woo Nam, Won Sang Park

**ORCID number:** Jung Hwan Yoon (0000-0001-7770-2965); Yeon Soo Lee (0000-0002-1653-6315); Olga Kim (0000-0001-5110-2523); Hassan Ashktorab (0000-0002-4048-4666); Duane T Smoot (0000-0002-8416-7419); Suk Woo Nam (0000-0001-5767-8291); Won Sang Park (0000-0002-9090-0584).

**Author contributions:** Yoon JH performed the majority of experiments, analyzed and interpreted the data, acquired funding and contributed to manuscript writing; Lee YS and Kim O reviewed and edited the manuscript; Ashktorab H and Smoot DT provided HFE-145 cells; Nam SW reviewed and edited the manuscript and helped in data interpretation; Park WS conceived the project, interpreted the data, acquired funding and wrote the manuscript.

**Supported by** the Basic Science Research Program through the National Research Foundation of Korea (NRF) funded by the Ministry of Education, Science and Technology, No. 2018R1A2A2A14019713 to Park WS.

### Institutional review board

**statement:** The study was approved by the Institutional Review Board of The Catholic University of Korea, College of Medicine (MC16SISI0130).

**Conflict-of-interest statement:** The authors disclose no potential conflicts of interest.

**Jung Hwan Yoon, Olga Kim, Suk Woo Nam, Won Sang Park,** Department of Pathology, College of Medicine, The Catholic University of Korea, Seoul 06591, South Korea

**Jung Hwan Yoon, Suk Woo Nam, Won Sang Park,** Functional RNomics Research Center, College of Medicine, The Catholic University of Korea, Seoul 06591, South Korea

**Yeon Soo Lee,** Department of Hospital Pathology, College of Medicine, The Catholic University of Korea, Seoul 06591, South Korea

**Hassan Ashktorab,** Department of Medicine, Howard University, Washington, DC 20060, United States

**Duane T Smoot,** Department of Medicine, Meharry Medical Center, Nashville, TN 37208, United States

**Corresponding author:** Won Sang Park, MD, PhD, Doctor, Professor, Department of Pathology, College of Medicine, The Catholic University of Korea, 222 Banpo-daero, Seocho-gu, Seoul 06591, South Korea. [wonsang@catholic.ac.kr](mailto:wonsang@catholic.ac.kr)

**Telephone:** +82-2-22587310

**Fax:** +82-2-5376586

## Abstract

### BACKGROUND

Atrophic gastritis is characterized by loss of appropriate glands and reduction in gastric secretory function due to chronic inflammatory processes in gastric mucosa. Moreover, atrophic gastritis is considered as a precancerous condition of gastric cancer. However, little is known about the molecular mechanism underlying gastric mucosal atrophy and its contribution to gastric carcinogenesis. Thus, we hypothesized that transcription factor NKX6.3 might be involved in maintaining gastric epithelial homeostasis by regulating amyloid  $\beta$  ( $A\beta$ ) production.

### AIM

To determine whether NKX6.3 might protect against gastric mucosal atrophy by regulating  $A\beta$  production.

### METHODS

We identified NKX6.3 depletion induced cell death by cell count and Western blot assay. Production and mechanism of  $A\beta$  oligomer were analyzed by enzyme-linked immunosorbent assay, Western blot, immunoprecipitation, real-time

**Data sharing statement:** No data are available.

**Open-Access:** This is an open-access article that was selected by an in-house editor and fully peer-reviewed by external reviewers. It is distributed in accordance with the Creative Commons Attribution Non Commercial (CC BY-NC 4.0) license, which permits others to distribute, remix, adapt, build upon this work non-commercially, and license their derivative works on different terms, provided the original work is properly cited and the use is non-commercial. See: <http://creativecommons.org/licenses/by-nc/4.0/>

**Manuscript source:** Unsolicited manuscript

**Received:** October 18, 2018

**Peer-review started:** October 18, 2018

**First decision:** November 29, 2018

**Revised:** December 21, 2018

**Accepted:** December 21, 2018

**Article in press:** December 21, 2018

**Published online:** January 21, 2019

quantitative polymerase chain reaction and immunofluorescence analysis. We further validated the correlation between expression of NKX6.3, *Helicobacter pylori* CagA, A $\beta$  oligomer, apolipoprotein E (ApoE), and  $\beta$ -secretase 1 (Bace1) in 55 gastric mucosae.

## RESULTS

NKX6.3 depletion increased both adherent and floating cell populations in HFE-145 cells. Expression levels of cleaved caspase-3, -9, and poly ADP ribose polymerase were elevated in floating HFE-145<sup>shNKX6.3</sup> cells. NKX6.3 depletion produced A $\beta$  peptide oligomers, and increased expression of ApoE, amyloid precursor protein, A $\beta$ , Bace1, low-density lipoprotein receptor, nicastrin, high mobility group box1, and receptor for advanced glycosylation end product proteins. In immunoprecipitation assay,  $\gamma$ -secretase complex was stably formed only in HFE-145<sup>shNKX6.3</sup> cells. In gastric mucosae with atrophy, expression of A $\beta$  peptide oligomer, ApoE, and Bace1 was detected and inversely correlated with NKX6.3 expression. Treatment with recombinant A $\beta$  1-42 produced A $\beta$  oligomeric forms and decreased cell viability in HFE-145<sup>shNKX6.3</sup> cells. Additionally, NKX6.3 depletion increased expression of inflammatory cytokines and cyclooxygenase-2.

## CONCLUSION

NKX6.3 inhibits gastric mucosal atrophy by regulating A $\beta$  accumulation and inflammatory reaction in gastric epithelial cells.

**Key words:** NKX6.3; Gastric mucosa; Atrophy; Amyloid  $\beta$ ; Gastrokine 1

©The Author(s) 2019. Published by Baishideng Publishing Group Inc. All rights reserved.

**Core tip:** In human gastric epithelial cells, NKX6.3 depletion induced production of amyloid  $\beta$  (A $\beta$ ) oligomers, and also increased expression of apolipoprotein E (ApoE), A $\beta$ ,  $\beta$ -secretase 1 (Bace1), nicastrin, and receptor for advanced glycosylation end product proteins. Moreover, NKX6.3 depletion leads to stably formed of  $\gamma$ -secretase complex and binding to Bace1 protein. In gastric mucosae with atrophy, expression of A $\beta$  oligomer, ApoE, and Bace1 was detected and inversely correlated with NKX6.3 expression. Additionally, treatment with recombinant A $\beta$  1-42 produced oligomeric forms of A $\beta$  and significantly decreased cell viability in NKX6.3 depleting cells. These observations provide evidences that NKX6.3 can inhibit gastric mucosal atrophy by regulating A $\beta$  peptide accumulation and inflammatory reaction in gastric epithelial cells.

**Citation:** Yoon JH, Lee YS, Kim O, Ashktorab H, Smoot DT, Nam SW, Park WS. NKX6.3 protects against gastric mucosal atrophy by downregulating  $\beta$ -amyloid production. *World J Gastroenterol* 2019; 25(3): 330-345

**URL:** <https://www.wjgnet.com/1007-9327/full/v25/i3/330.htm>

**DOI:** <https://dx.doi.org/10.3748/wjg.v25.i3.330>

## INTRODUCTION

Atrophic gastritis is characterized by loss of appropriate glands and reduction in gastric secretory function due to chronic inflammatory processes in gastric mucosa<sup>[1]</sup>. In South Korea, the prevalence of atrophic gastritis is relatively high. It is 59.4% in people older than 60 years<sup>[2]</sup>, and the crude incidence for cancer is 1.7% in atrophic gastritis<sup>[3]</sup>. It has been widely accepted that chronic inflammation of the stomach can initiate histopathologic progression from chronic gastritis to gastric atrophy, intestinal metaplasia, dysplasia and finally gastric cancer<sup>[4-6]</sup>. Thus, atrophic gastritis is considered as a precancerous condition of gastric cancer. However, little is known about the molecular mechanism underlying gastric mucosal atrophy and its contribution to gastric carcinogenesis.

Amyloid  $\beta$  peptide (A $\beta$ ) plays a key role in pathogenesis of Alzheimer's disease. It is a 4-kDa metalloprotein with 39- to 43-amino acids derived from proteolytic cleavage of amyloid precursor protein (APP) by  $\beta$ - and  $\gamma$ -secretase<sup>[7]</sup>. In contrast,  $\alpha$ -secretase ADAM10, a metalloprotease, cleaves APP within the A $\beta$  domain, thus

preventing A $\beta$  generation<sup>[8]</sup>. It has been reported that  $\beta$ -site amyloid precursor protein cleaving enzyme (BACE) is a novel transmembrane aspartic protease that exhibits properties of  $\beta$ -secretase<sup>[9]</sup>.  $\gamma$ -secretase is a high molecular weight complex minimally composed of four components: presenilin (PS), nicastrin (NCT), anterior pharynx-defective-1 (APH-1), and presenilin enhancer-2 (PEN2)<sup>[10-13]</sup>. BACE1 cleaves APP not processed by  $\alpha$ -secretase to generate carboxy-terminal fragments of 99 amino acids. This is further processed by  $\gamma$ -secretase to A $\beta$ 40 and A $\beta$ 42 that are transported to the cell surface which they are secreted *via* recycling vesicle<sup>[14]</sup>. In addition, receptor for advanced glycation end products (RAGE) is one of receptors that mediate A $\beta$  effects on neurons and microglia<sup>[15]</sup> and is implicated in a wide spectrum of pathological responses, including inflammation and cancer<sup>[16]</sup>. Apolipoprotein E (ApoE) increases oligomerization of A $\beta$  peptide in an isoform-dependent manner<sup>[17]</sup> and major ApoE receptors belong to low-density lipoprotein (LDL) receptor family<sup>[18]</sup>. It has been proposed that accumulated A $\beta$  proteins can generate oligomers and induce synaptic dysfunction and death of neurons<sup>[19,20]</sup>.

NKX family of homeodomain transcription factors are involved in a variety of developmental processes, and the NKX6.3 member is expressed in epithelium of the most distal stomach<sup>[21,22]</sup>. Previously, we have reported that NKX6.3 functions as a master regulator of gastric differentiation by modulating SOX2 and CDX2 expression and as a tumor suppressor by inhibiting cell proliferation and inducing apoptosis<sup>[23,24]</sup>. Interestingly, gastric tumor suppressor gastrokine 1 (GKN1), a downstream target of NKX6.3, interacts with APP and inhibits polymerization of A $\beta$ <sup>[25,26]</sup>. Thus, we hypothesized that transcription factor NKX6.3 might be involved in maintaining gastric epithelial homeostasis by regulating A $\beta$  production. Here, we provide the first evidence that NKX6.3 may protect gastric mucosal epithelial cells from atrophy by inhibiting A $\beta$  production and polymerization.

## MATERIALS AND METHODS

### Samples

A total of 55 patients with sporadic gastric cancer who underwent a gastrectomy at Chonnam National University Hwasun Hospital were included. Fresh-frozen non-neoplastic gastric mucosae remote ( $\geq 5$  cm) from the tumor were used in this study. In addition, gastric mucosal tissues adjacent to each frozen specimen were fixed in formalin and stained with hematoxylin-eosin. Patients with a history of familial gastric cancer were excluded. Two expert gastrointestinal pathologists independently assessed the histologic specimens according to the updated Sydney system and the reached a consensus for all specimens<sup>[27]</sup>. Atrophy was defined as loss of appropriate glands and a periodic acid Schiff staining was used to identify intestinal metaplasia. Gastric mucosae with atrophy and intestinal metaplasia were considered as atrophic gastritis. The presence of *Helicobacter pylori* (*H. pylori*) CagA was determined by Western blot analysis<sup>[28]</sup>. This study was approved by the Institutional Review Board (IRB) of The Catholic University of Korea, College of Medicine (approval number: MC16SISI0130).

### Cell culture and transfection of NKX6.3

HFE-145 immortalized gastric epithelial cell line expressing NKX6.3 was cultured at 37 °C and 5% CO<sub>2</sub> in RPMI-1640 medium supplemented with 10% heat-inactivated fetal bovine serum. shNKX6.3 was cloned into pSilencer 3.1 H1-neo (Invitrogen, Carlsbad, CA, United States). We generated stable shNKX6.3 transfectants of HFE-145 cells (HFE-145<sup>shNKX6.3</sup> cells), stably silencing human NKX6.3 expression, as well as shControl transfectants of HFE-145<sup>shCtrl</sup> cells as described previously<sup>[24]</sup>. Expression levels of NKX6.3 in HFE-145<sup>shCtrl</sup> and HFE-145<sup>shNKX6.3</sup> cells were confirmed by Western blot analysis. The *CagA* gene of *H. pylori* was cloned into a pSP65SRalpha vector containing a hemagglutinin (HA) tag, and the HFE-145 cells were transfected with *CagA* gene, as described previously<sup>[24]</sup>. The *CagA* construct was kindly provided by Dr. Hatakeyama (Tokyo University, Tokyo, Japan).

### Cell count of floating and adherent cells

HFE-145<sup>shCtrl</sup> and HFE-145<sup>shNKX6.3</sup> cells in complete medium were seeded onto 12-well plates at a density of  $1 \times 10^4$  cells per well. Floating and adherent cells were harvested after 48 h of culture and counted using a hemocytometer.

### Cell viability and proliferation assay

For cell viability analysis, MTT assay were performed for HFE-145 immortalized gastric epithelial cells at 24, 48, 72, and 96 h after treatment with recombinant A $\beta$  (1  $\mu$ g/mL, rA $\beta$ , Sigma, St. Louis, MO, United States). Absorbance at 540 nm was

measured using a spectrophotometer and cell viability was expressed relative to non-treated cells.

### Measurement of caspase 3/7 activity

To analyze the effect of NKX6.3 on apoptosis, caspase-3 and -7 activities were examined using an Apo-One Homogeneous caspase 3/7 assay kit (Promega Corporation, Madison, WI, United States) as described previously<sup>[28]</sup>.

### Measurement of NKX6.3, *ApoE*, *Bace1*, and inflammatory cytokine expression

Expression levels of NKX6.3, *ApoE*, and *Bace1* mRNA transcripts were examined in 55 gastric mucosal tissues by real-time RT-PCR. In addition, to investigate whether ablation of NKX6.3 might contributed to inflammatory cytokine expression, the expression of *IL-1 $\beta$* , *IL-6*, *IL-8*, and *COX-2* mRNAs in HFE-145<sup>shCtrl</sup> and HFE-145<sup>shNKX6.3</sup> cells were analyzed by real-time RT-PCR. The effects of *ApoE* silencing with *siApoE* on expression levels of inflammatory cytokines were also examined. After quantification of total RNA extracted from 55 frozen gastric mucosal tissues, HFE-145<sup>shCtrl</sup>, and HFE-145<sup>shNKX6.3</sup> cells, RT-PCR was carried out using SYBR Green Q-PCR Master Mix (Bio-Rad, Hercules, CA, United States) according to the manufacturer's protocol. The mRNA expression of these genes was quantified by quantitative real-time reverse transcription PCR (QRT-PCR) and normalized to mRNA level of  $\beta$ -actin. Primer sequences are presented in Supplementary Table 1. Data are reported as relative quantities according to an internal calibrator using a  $2^{-\Delta\Delta CT}$  method<sup>[23]</sup>. The standard curve method was used for quantification of the relative amounts of gene expression products. This method provides unit-less normalized expression values that can be used for direct comparison of the relative amount of RNA in different samples.

### Immunoblot and immunofluorescent studies

Primary anti-A $\beta$  antibody (Merck-millipore, Darmstadt, Germany), anti-BACE1 (Abcam, Cambridge, United Kingdom) and secondary anti-alexa-488 conjugated goat anti-mouse IgG antibody (Invitrogen, CA, United States) were used to visualize immunoreactivity. The specificity of reactions was tested by incubation with non-immune mouse serum (Invitrogen).

We examined expression levels of NKX6.3 and A $\beta$ -related genes in cell lysates by Western blot analysis. We separated equal amounts of cell lysates by 12.5% SDS-PAGE and transferred them to Hybond-polyvinylidene difluoride transfer membranes (Amersham Biosciences, NJ, United States). After blocking with 0.5% skim milk, we blotted the membranes with the primary antibodies and then incubated them with horseradish peroxidase-conjugated secondary antibodies. We detected the protein bands using westernsure ECL substrate (LI-COR Biosciences, NE, United States) and visualized the intensity of bands using a LAS 4000 image analyzer (Fuji Film, Japan). The antibody list is described in Supplementary Table 2.

### Chromatin immunoprecipitation assay

For assessing the NKX6.3 binding activity to the promoter regions of *ApoE* and *Bace1*, chromatin immunoprecipitation (ChIP) assays were performed using the Thermo Scientific Pierce Agarose ChIP kit (Thermo Scientific Pierce, Rockford, IL, United States), as previously described<sup>[24]</sup>. Briefly, HFE-145<sup>shCtrl</sup> and HFE-145<sup>shNKX6.3</sup> cells were cultured in a 10-cm dish for 4 d. The cells were fixed with 1% formaldehyde in PBS for 10 min, washed twice with ice-cold PBS and re-suspended in lysis buffer. Nuclei were recovered by centrifugation and MNase digestion was carried out at 37 °C for 15 min. Nuclei were lysed and the extracts were immunoprecipitated with 4  $\mu$ g of antibody against NKX6.3 at 4 °C overnight. Normal rabbit IgG was used as a negative control. Protein-bound DNA was recovered using affinity chromatography purification columns according to the manufacturer's protocol (Thermo Scientific), and 5  $\mu$ L of lysed nuclei were also purified under the same procedure and used as input. DNA amplification was performed by PCR using primers for the *ApoE* and *Bace1* promoters described in Supplementary Table 1. Amplification products were separated on a 2% agarose gel.

### A $\beta$ ELISAs

ELISAs for measuring A $\beta$ 42 peptide were performed using commercial kits (Invitrogen) following the manufacturer's instructions. Briefly, A $\beta$ 42 ELISAs were performed using 6E10 as a capture antibody and anti-A $\beta$ 42 HRP-conjugated antibodies (Covance, Dedham, MA, United States) as detection antibodies. Synthetic A $\beta$ 42 were used to generate a standard curve for each experiment. The plates were developed using TMB substrate kit (Pierce, Rockford, IL, United States) and the reaction was stopped by addition of equal volume of 1 mol/L HCl. The results were read using a Spectramax colorimetric plate reader (Molecular Devices, Sunnyvale,



CA, United States).

### Immunoprecipitation

For coimmunoprecipitation experiments, cells were harvested in PBS, centrifuged at 800 g for 10 min, and lysed in 125 mmol/L NaCl, 50 mmol/L Hepes, pH 7.4 (supplemented with 1% Triton X-100 or CHAPS and Complete protease inhibitors) for 30 min at 4 °C. After centrifugation at 16000 g for 15 min, cleared cell extracts were incubated overnight at 4 °C with protein A/G-agarose (Santa Cruz Biotechnology, Santa Cruz, CA, United States) and anti-PSN1 or anti-rabbit IgG beads. Immunoprecipitated proteins were resolved on 12% SDS-polyacrylamide gels and transferred to PVDF membranes (Bio-Rad, Richmond, CA, United States). The membranes were blocked for 1 h in PBS containing 0.1% Tween 20 (PBS-T) and 5% non-fat dry milk (Sigma) and reacted with antibodies against PSN1, each diluted 1:1000. The membranes were washed with PBS-T, then incubated for 1 h at room temperature with horseradish peroxidase-conjugated anti-rabbit IgG antibody (Sigma), diluted 1:5000, and developed with westernsure ECL substrate (LI-COR Biosciences). Immunoreactive bands were identified by co-migration of prestained protein size markers (Fermentas, Glen Burnie, MD, United States). To confirm equivalent protein loading and transfer, the blots were stripped and re-probed for GAPDH (Santa Cruz Biotechnology).

### Statistical analyses

Pearson and Student's *t*-tests were used to analyze the correlation between expression of NKX6.3, GKN1, A $\beta$  peptide oligomer, ApoE, and BACE1. We performed all experiments in duplicate to verify the reproducibility of the findings. Data are expressed as means  $\pm$  SD from two independent experiments. A *P*-value < 0.05 was considered to be the limit of statistical significance.

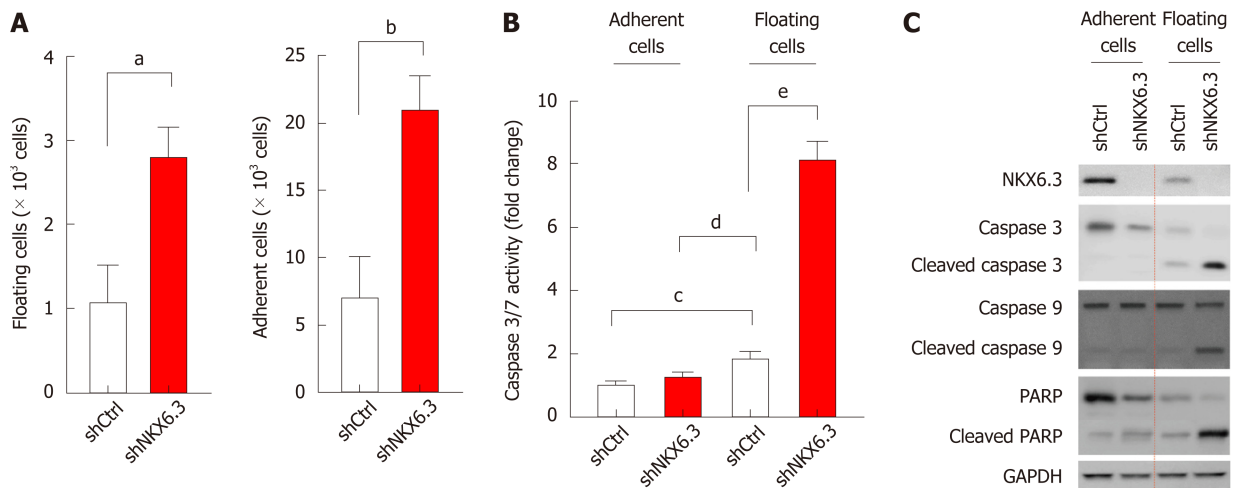
## RESULTS

### Loss of NKX6.3 expression induces both cell death and proliferation

During cell culture, NKX6.3 depletion in HFE-145<sup>shNKX6.3</sup> cells increased populations of both adherent and floating cells compared to HFE-145<sup>shCtrl</sup> cells (Figure 1A). Since previously we have reported that NKX6.3 depletion increases cell population of HFE-145 cells<sup>[24]</sup>, here we focused on the increase of floating HFE-145<sup>shNKX6.3</sup> cells. When we examined the effects of NKX6.3 depletion on cell death, caspase 3/7 activity was significantly increased only in floating HFE-145<sup>shNKX6.3</sup> cells (Figure 1B). Interestingly, NKX6.3 depletion did not affect expression of apoptosis markers including caspase-3, -9, and PARP in attached cells. However, expression levels of cleaved forms of caspase-3, -9, and PARP were increased in floating HFE-145<sup>shNKX6.3</sup> cells compared with those in floating HFE-145<sup>shCtrl</sup> cells (Figure 1C). Thus, it is likely that NKX6.3 may inhibit both cell proliferation and apoptotic cell death in gastric epithelial cells.

### NKX6.3 inhibits A $\beta$ accumulation by regulating ApoE, $\beta$ -, and $\gamma$ -secretase

Next, we examined whether NKX6.3 was involved in A $\beta$  production in HFE-145 cells. Interestingly, NKX6.3 depletion markedly induced expression of ApoE, APP, A $\beta$  peptide, BACE1, LDLR, NCT, high-mobility group box 1 (HMGB1), and RAGE proteins but decreased expression of presenilin1 (PSN1) protein in HFE-145 cells (Figure 2A). There are three distinct pools of A $\beta$  species: monomers, soluble oligomers, and insoluble fibrils<sup>[29]</sup>. Interestingly, HFE-145<sup>shCtrl</sup> cells only expressed A $\beta$  monomer, while NKX6.3 depleted HFE-145<sup>shNKX6.3</sup> cells induced production of A $\beta$  oligomers and increased expression of A $\beta$  monomer (Figure 2A). When we examined the effect of NKX6.3 on  $\gamma$ -secretase assembly by immunoprecipitation assay,  $\gamma$ -secretase complex, including PSN1, PSN2, NCT, and PEN2 was stably formed and binding to BACE1 protein only in NKX6.3 depleted HFE-145<sup>shNKX6.3</sup> cells (Figure 2B). In immunofluorescence analysis, strong expression of A $\beta$  peptides were detected in the cytoplasm of NKX6.3 depleted HFE-145<sup>shNKX6.3</sup> cells (Figure 2C). Notably, aggregated A $\beta$  peptide was not detected in HFE-145<sup>shCtrl</sup> cells expressing NKX6.3 whereas NKX6.3 depletion significantly increased concentrations of the aggregated A $\beta$  peptide in both cell lysate and culture media (Figure 2D). In NKX6.3 depleted HFE-145<sup>shNKX6.3</sup> cells, mRNA expression of *ApoE* and *Bace1* genes were significantly increased (Figure 2E) while binding capacity of NKX6.3 to promoter regions of *ApoE* and *Bace1* genes was dramatically decreased in ChIP assay (Figure 2F), suggesting that NKX6.3 might be a transcriptional repressor of *ApoE* and *Bace1* genes. When we treated HFE-145<sup>shCtrl</sup> and HFE-145<sup>shNKX6.3</sup> cells with recombinant A $\beta$  1-42 (rA $\beta$  1-42), ApoE and oligomeric forms of A $\beta$  were detected in NKX6.3 depleted HFE-145<sup>shNKX6.3</sup> cells (Figure 2G). Taken together, these results suggest that NKX6.3 may inhibit accumulation and



**Figure 1** NKX6.3 inhibits both cell proliferation and apoptotic cell death in gastric epithelial cells. A: NKX6.3 depletion in HFE-145<sup>shNKX6.3</sup> cells increased both adherent and floating cell populations. Shown are the means  $\pm$  SEM from three experiments. Superscript letter represents significant difference (<sup>a</sup> $P < 0.005$ ). B: Caspase 3/7 activity was significantly increased in floating HFE-145<sup>shNKX6.3</sup> cells. Shown are the means  $\pm$  SEM from three experiments. Superscript letter significant difference (<sup>b</sup> $P < 0.0001$ ). C: In Western blot analysis, expression of cleaved forms of caspase-3, -9, and poly ADP ribose polymerase (PARP) was increased in floating HFE-145<sup>shNKX6.3</sup> cells.

oligomerization of A $\beta$  peptide in gastric epithelial cells.

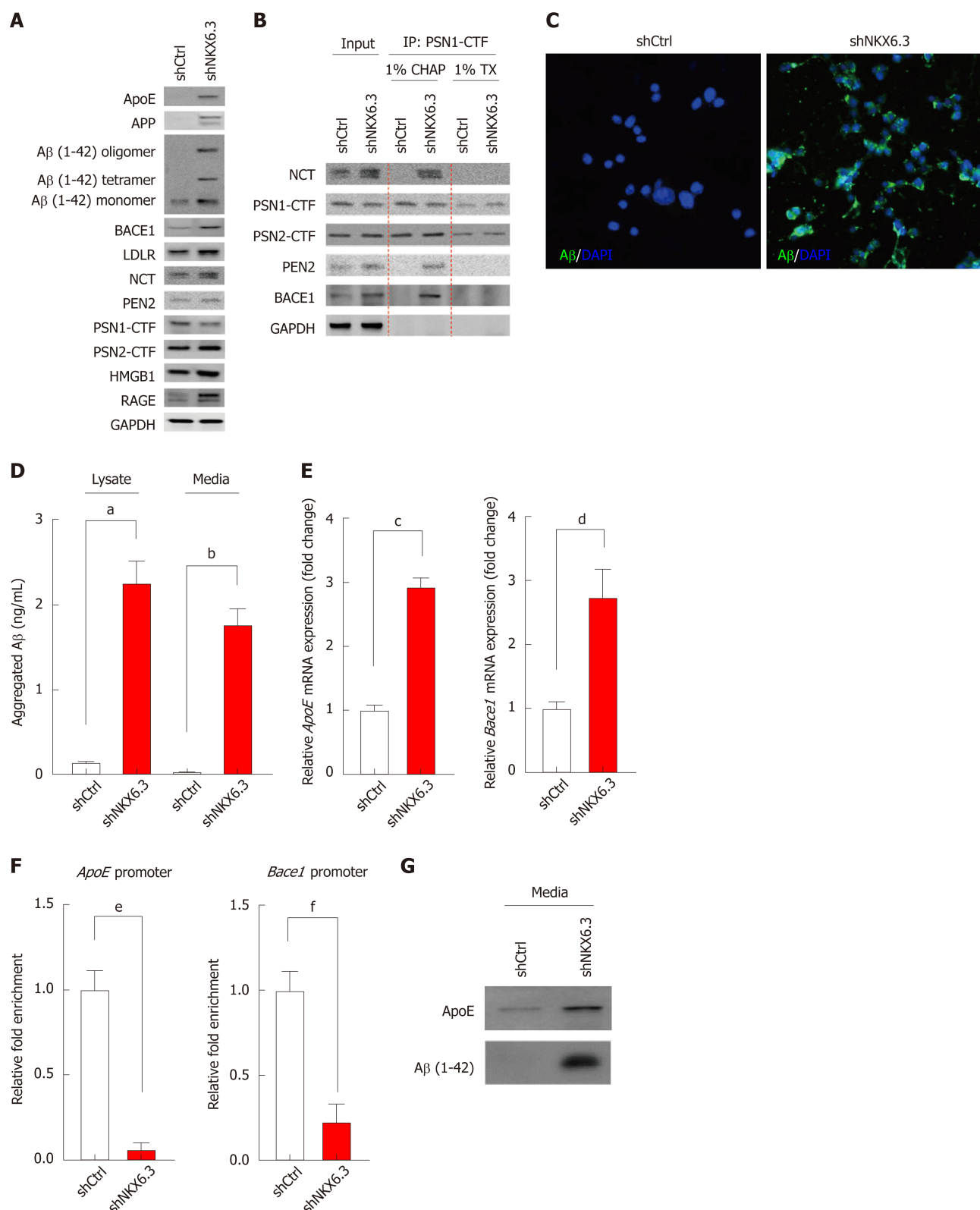
### A $\beta$ oligomerization is strongly associated with gastric mucosal atrophy

Histologically, gastric mucosal atrophy was found in 18 (32.7%) of 55 gastric mucosae. In Western blot analysis, A $\beta$  oligomers, including tetramer, were mainly expressed in gastric mucosae with atrophy. In addition, expression levels of ApoE, Bace1, and cleaved form of caspase-3 were increased in atrophic gastric mucosae along with reduced NKX6.3 expression (Figure 3A). To further confirm the effect of NKX6.3 on ApoE and Bace1 expression, we compared expression levels of NKX6.3 with ApoE and Bace1 mRNA expression levels in 55 non-neoplastic gastric mucosae by real-time RT-PCR. Previously, NKX6.3 expression has been found to be significantly reduced in the cases with atrophy<sup>[23]</sup>. As expected, mRNA expression levels of ApoE and Bace1 were significantly higher in gastric mucosae with atrophy (Figure 3B), showing inverse correlations with NKX6.3 expression ( $P = 0.0001$ ) (Figure 3C). In addition, reduced expression of NKX6.3 protein, expression of A $\beta$  oligomer, Bace1, ApoE, and cleaved caspase-3 proteins, and CagA were significantly associated with gastric mucosal atrophy. The expression of A $\beta$  oligomer was positively correlated with expression of Bace1, ApoE, cleaved caspase-3, and CagA (Figure 3D). We also measured aggregated A $\beta$  peptide concentrations in 55 gastric mucosae by ELISA and found significantly higher A $\beta$  peptide concentrations in gastric mucosae with atrophy ( $1.20 \pm 0.60$   $\mu\text{g/mL}$ ) than those in gastric mucosae without atrophy ( $0.09 \pm 0.09$   $\mu\text{g/mL}$ ; Figure 3E). When we transfected HFE-145 cells with CagA, ectopic expression of CagA reduced the expression of NKX6.3 but increased A $\beta$  oligomerization and expression of ApoE, Bace1, and cleaved caspase-3 (Figure 3F). Next, we examined A $\beta$  oligomer expression in 6 non-neoplastic gastric mucosae with atrophy ( $n = 3$ ) and without atrophy ( $n = 3$ ) using specific antibody against A $\beta$  oligomer by immunofluorescent assay. Consistent with above result, expression of A $\beta$  oligomer was detected in gastric mucosae with atrophy in immunofluorescent assay (Figure 3G). Interestingly, A $\beta$  oligomer was present only in gastric mucosal epithelial cells, but not in extracellular matrix including inflammatory cells (Figure 3G).

### A $\beta$ induces cell death in gastric epithelial cells

Next, to investigate whether oligomeric forms of A $\beta$  were associated with gastric mucosal atrophy, we analyzed cell viability of gastric epithelial cells after treatment with rA $\beta$  1-42. Because we found  $1.18 \pm 0.57$   $\mu\text{g/mL}$  of aggregated A $\beta$  peptide in gastric mucosae with atrophy (Figure 3), we treated HFE-145<sup>shCtrl</sup> and HFE-145<sup>shNKX6.3</sup> cells with 1  $\mu\text{g/mL}$  of rA $\beta$  for 4 d. As shown in Figure 4A, treatment with rA $\beta$  1-42 produced oligomeric forms of A $\beta$  only in HFE-145<sup>shNKX6.3</sup> cells, but not in HFE-145<sup>shCtrl</sup> cells (Figure 4A). In addition, recombinant GKN1 (rGKN1) partially reduced expression of A $\beta$  oligomers (Figure 4A). In HFE-145<sup>shNKX6.3</sup> cells, treatment with rA $\beta$  1-42 significantly reduced cell viability but markedly increased floating cell population in HFE-145<sup>shNKX6.3</sup> cells (Figure 4B and C). Notably, rGKN1 partially revoked the effect of rA $\beta$  on cell viability (Figure 4D). However, treatment with rA $\beta$  1-42 did not affect





**Figure 2** NKX6.3 inhibits amyloid  $\beta$  accumulation by regulating apolipoprotein E,  $\beta$ -, and  $\gamma$ -secretase. **A:** Western blot analysis showing increased expression of apolipoprotein E (ApoE), amyloid precursor protein (APP), amyloid  $\beta$  (A $\beta$ ),  $\beta$ -secretase 1 (Bace1), low-density lipoprotein receptor (LDLR), nicastrin (NCT), high mobility group box1 (HMGB1), and receptor for advanced glycosylation end product (RAGE) proteins but decreased expression of presenilin 1 (PSN1)- C-terminal (CTF) protein in NKX6.3 depleted HFE-145 cells. Interestingly, HFE-145<sup>shCtrl</sup> cells expressed only A $\beta$  monomer whereas NKX6.3 depleted HFE-145<sup>shNKX6.3</sup> cells induced production of oligomers of A $\beta$  and increased expression of A $\beta$  monomer. **B:** In immunoprecipitation assay,  $\gamma$ -secretase complex including PSN1-CTF and 2-CTF, NCT, and presenilin enhancer 2 (PEN2) was stably formed, binding to Bace1 protein only in NKX6.3 depleted HFE-145<sup>shNKX6.3</sup> cells. **C:** Immunofluorescence images showing strong expression of A $\beta$  protein in the cytoplasm of NKX6.3 depleted HFE-145<sup>shNKX6.3</sup> cells. **D:** In A $\beta$ 42 enzyme-linked immunosorbent assay, NKX6.3 depletion significantly increased concentrations of aggregated A $\beta$  in both cell lysate and culture media. Shown are the means  $\pm$  SEM from three experiments. Superscript letter significant difference ( $^aP < 0.0001$ ). **E:** Increased mRNA expression of *ApoE* and *Bace1* genes was detected in NKX6.3 depleted HFE-145<sup>shNKX6.3</sup> cells. Shown are the means  $\pm$  SEM from three experiments. Superscript letter represents significant difference ( $^bP < 0.005$  and  $^cP < 0.0001$ ). **F:** In chromatin immunoprecipitation assay, the binding capacity of NKX6.3 to promoter regions of *ApoE* and *Bace1* genes was dramatically decreased. Shown are the means  $\pm$  SEM

from three experiments. Superscript letter represents significant difference (<sup>d</sup> $P < 0.005$  and <sup>e</sup> $P < 0.0001$ ). G: When we treated HFE-145<sup>shCtrl</sup> and HFE-145<sup>shNKX6.3</sup> cells with A $\beta$  1-42 recombinant protein (rA $\beta$  1-42), expression levels of ApoE and oligomeric forms of A $\beta$  were markedly increased in NKX6.3 depleted HFE-145<sup>shNKX6.3</sup> cells. CHAP: Chaps buffer; TX: Triton-100; ApoE: Apolipoprotein E; APP: Amyloid precursor protein; A $\beta$ : Amyloid  $\beta$ ; Bace1:  $\beta$ -secretase 1; LDLR: Low-density lipoprotein receptor; NCT: Nicastrin; HMGB1: High mobility group box1; RAGE: Receptor for advanced glycosylation end product; PSN1: Presenilin 1; CTF: C-terminal; PEN2: Presenilin enhancer 2; rA $\beta$  1-42: A $\beta$  1-42 recombinant protein.

cell viability of HFE-145<sup>shCtrl</sup> cells (Figure 4B). These results suggest that A $\beta$  oligomerization prompted by NKX6.3 depletion may induce cell death in gastric epithelial cells.

### **NKX6.3 depletion induces inflammatory cytokine expression in gastric epithelial cells**

It is known that A $\beta$  accumulation in human nerve cells leads to synthesis of proinflammatory cytokines and activation of inflammatory pathways<sup>[30]</sup>. Thus, we further examined the expression of inflammatory markers including IL-1 $\beta$ , -6, -8, and COX-2 by real-time RT-PCR. Expectedly, NKX6.3 depletion in HFE-145<sup>shNKX6.3</sup> cells dramatically increased the expression of these inflammatory cytokines and COX-2 (Figure 5A). In HFE-145<sup>shNKX6.3</sup> cells, silencing of ApoE with *siApoE* markedly inhibited oligomerization and aggregation of A $\beta$  peptide. It also suppressed expression of NF- $\kappa$ B p-p65 and inflammatory cytokines (Figure 5B and C). This suggests that ApoE plays an important role in A $\beta$  oligomerization and synthesis of inflammatory cytokines.

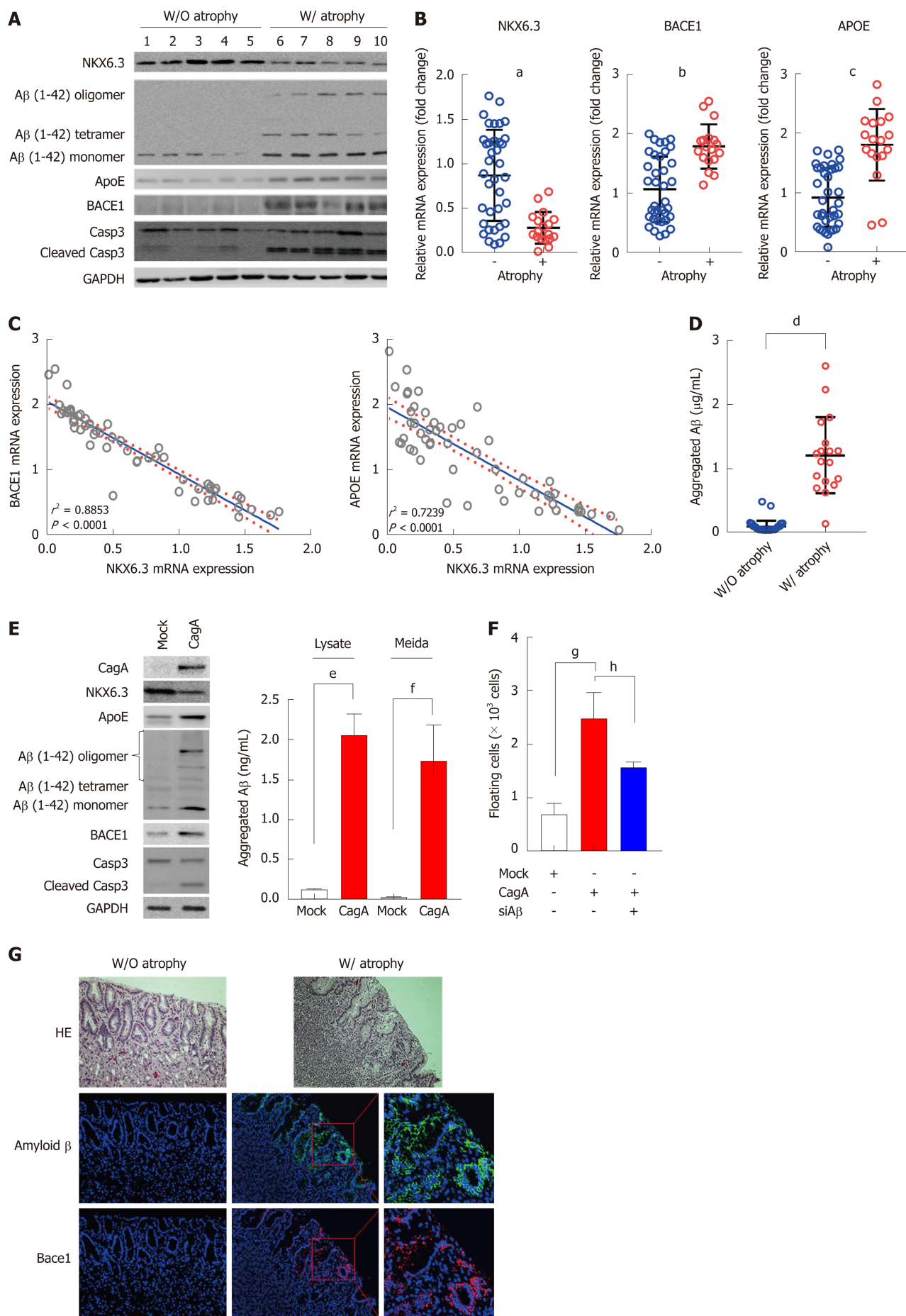
## **DISCUSSION**

Inflammatory disorders have been well recognized as key risk factor for many types of cancers. Stages of precancerous cascade for gastric adenocarcinoma are a series of histologically discernible changes in gastric mucosa with the following sequence: non-atrophic gastritis, multifocal atrophic gastritis, intestinal metaplasia (IM), and dysplasia<sup>[31]</sup>. *H. pylori* infection has been identified as the causative agent of chronic gastric inflammation, such as atrophic gastritis and metaplastic gastritis<sup>[32]</sup>. However, molecular mechanisms underlying gastric mucosal atrophy still remain to be determined for the prevention and early diagnosis of gastric cancer. Since intracellular generation of the A $\beta$  protein is known to lead to neuronal death<sup>[19]</sup> while NKX6.3 expression is confined to the gut and caudal hindbrain<sup>[33]</sup>. Thus, we hypothesized that NKX6.3 could protect gastric mucosa from atrophic changes by inhibiting A $\beta$  accumulation.

We first examined whether NKX6.3 was involved in proliferation and death of gastric mucosa. As shown in Figure 1A, NKX6.3 depletion in HFE-145<sup>shNKX6.3</sup> cells significantly increased proportions of both adherent and floating cells. In addition, increased caspase 3/7 activity was found in floating HFE-145<sup>shNKX6.3</sup> cells (Figure 1B). In Western blot analysis, NKX6.3 did not affect expression of apoptosis markers, including PARP, caspase-3, or caspase-9 in adherent HFE-145<sup>shNKX6.3</sup> cells, but NKX6.3 depletion induced expression of these apoptotic markers (Figure 1C), providing an intriguing scenario where NKX6.3 might be a key regulator of gastric mucosal homeostasis by inhibiting both cell proliferation and death. Here, we focused on the inhibitory activity of NKX6.3 on death of gastric mucosal epithelial cells.

In general, regulation of proteolysis plays a crucial role in many processes of development, cell proliferation and death. Dysregulation of proteolytic system can destroy cellular homeostasis by accumulation of specific proteins, thus contributing to disease pathogenesis. Amyloid aggregates have been found to be associated with disruption of several cellular functions, including mitochondrial activity<sup>[34]</sup>, oxidative stress<sup>[35,36]</sup>, and apoptosis<sup>[37]</sup>. A $\beta$  acts as a neurotoxin that directly induces oxidative stress whereas RAGE mediates A $\beta$ -induced oxidative stress and inflammatory response. Increased expression of RAGE has been implicated in the pathogenesis of neuronal dysfunction and death<sup>[15]</sup>. In the present study, we hypothesized that A $\beta$  peptide accumulation caused by NKX6.3 depletion could induce gastric epithelial cell death which subsequently could contribute to gastric mucosal atrophy. Interestingly, depletion of NKX6.3 induced A $\beta$  peptide accumulation in the cytoplasm of HFE-145<sup>shNKX6.3</sup> cells and increased expression of A $\beta$  in cell lysate and culture medium (Figure 2). These results suggest that NKX6.3 may inhibit accumulation and oligomerization of A $\beta$  peptide in gastric epithelial cells.

Cleavage of APP by Bace1 produces a large soluble ectodomain form and a membrane-bound 99-amino acid C-terminal fragment. Subsequently, the  $\gamma$ -secretase



**Figure 3 Amyloid  $\beta$  oligomerization is strongly associated with gastric mucosal atrophy.** A: In Western blot analysis, amyloid  $\beta$  (A $\beta$ ) oligomers were expressed only in gastric mucosae with atrophy. Expression of apolipoprotein E (ApoE),  $\beta$ -secretase 1 (Bace1), and cleaved form of caspase-3 were increased in atrophic gastric

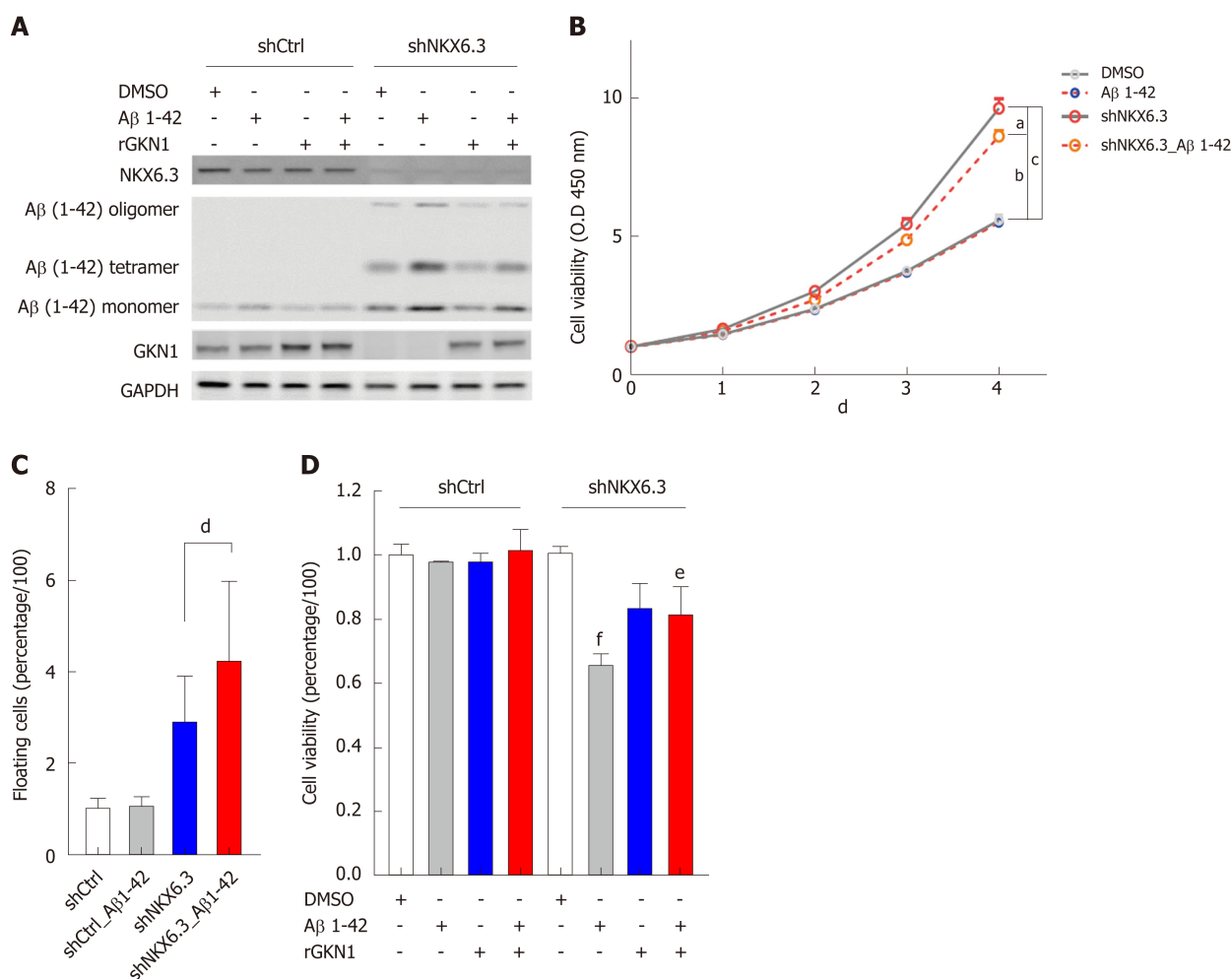
mucosae with reduced NKX6.3 expression. B and C: Expression levels of *ApoE* and *Bace1* mRNAs were significantly higher in gastric mucosae with atrophy (B), showing inverse correlations with NKX6.3 expression ( $P < 0.0001$ , C). Shown are the means  $\pm$  SEM from three experiments. Superscript letter represents significant difference ( $^aP < 0.0001$ ,  $^bP < 0.0001$  and  $^cP < 0.0001$ ). D: In A $\beta$ 42 enzyme-linked immunosorbent assay, concentrations of aggregated A $\beta$  were significantly increased in gastric mucosae with (W/) atrophy ( $1.20 \pm 0.60$   $\mu$ g/mL) compared to without (W/O) atrophy ( $0.09 \pm 0.09$   $\mu$ g/mL). Shown are the means  $\pm$  SEM from three experiments. Superscript letter represents significant difference ( $^dP < 0.0001$ ). E: Western blot analysis showing decreased expression of NKX6.3 and increased expression of ApoE, A $\beta$  oligomer, Bace1, and cleaved caspase-3 proteins in CagA transfected HFE-145 cells. In addition, CagA significantly increased concentrations of aggregated A $\beta$  in both cell lysate and culture media. Shown are the means  $\pm$  SEM from three experiments. Superscript letter represents significant difference ( $^eP < 0.005$  and  $^fP < 0.0001$ ). F: Knock-down of A $\beta$  inhibited CagA-induced floating cells populations. Shown are the means  $\pm$  SEM from three experiments. Superscript letter represents significant difference ( $^gP < 0.005$  and  $^hP < 0.0001$ ). G: Immunofluorescence analysis showing expression of A $\beta$  oligomer and Bace1 only in gastric mucosae with atrophy, but not in gastric mucosa without atrophy. Right panel is a higher magnification of the A $\beta$  oligomer and Bace1 in the inlet in gastric mucosae with atrophy. ApoE: Apolipoprotein E; A $\beta$ : Amyloid  $\beta$ ; Bace1:  $\beta$ -secretase 1; W/: With atrophy; W/O: Without atrophy.

protein complex will cleave the C-terminus of C99 to produce a 40- to 42-amino acid A $\beta$ -peptide<sup>[38]</sup>. After sequential cleavage of APP by  $\beta$ - and  $\gamma$ -secretases<sup>[38,39]</sup>, A $\beta$  monomer can aggregate to form oligomers, protofibrils, and fibrils that deposit as amyloid plaque<sup>[40]</sup>. RAGE and HMGB1 are involved in activating NF- $\kappa$ B<sup>[41]</sup>, and the interaction of RAGE and HMGB1 can be linked to necrosis and a proinflammatory response in cells<sup>[42]</sup>. Here, we found that NKX6.3 depletion induced expression of ApoE, APP, A $\beta$ , Bace1, LDLR, NCT, HMGB1, and RAGE proteins in HFE-145<sup>shNKX6.3</sup> cells (Figure 2A). In addition, NKX6.3 inhibited the  $\gamma$ -secretase complex assembly (Figure 2B) and down-regulated expression of the *APOE* and *Bace1* genes by acting as a transcriptional repressor (Figure 2D and E). In gastric mucosae with atrophy, oligomeric forms of A $\beta$  and Bace1 were detected by immunofluorescent and Western blot analyses (Figure 3A and G), and the increased expression of *APOE* and *Bace1* was inversely correlated with NKX6.3 expression (Figure 3B and C). Interestingly, expression of A $\beta$  oligomer, Bace1, ApoE, cleaved caspase-3, and *H. pylori* CagA was closely associated with gastric mucosal atrophy and inversely correlated with NKX6.3 expression ( $P < 0.0001$ , Table 1). Furthermore, A $\beta$  peptide concentrations were significantly higher in gastric mucosae with atrophy ( $1.18 \pm 0.57$   $\mu$ g/ml) than those in gastric mucosae without atrophy ( $0.07 \pm 0.04$   $\mu$ g/ml; Figure 3D). In HFE-145 cells, *H. pylori* CagA increased the expression of ApoE, Bace1, and cleaved caspase-3 and induced oligomerization and aggregation of A $\beta$  peptide (Figure 3E). Notably, *siA $\beta$*  markedly inhibited CagA effect of cell viability (Figure 3F), indicating that A $\beta$  be involved in CagA-induced cell death in non-neoplastic gastric epithelial cells. Taken together, these results suggest that NKX6.3 may prevent gastric mucosal atrophy by regulating A $\beta$  degradation or clearance pathway.

Recent studies have shown that soluble oligomeric species of A $\beta$  have direct adverse effects, whereas fibrillar or monomeric A $\beta$  seems to be less harmful *in vitro* and in animal models<sup>[43-45]</sup>. Soluble A $\beta$  oligomers can produce cognitive deficits in the absence of plaques<sup>[46]</sup> while blocking the A $\beta$  oligomerization can protect cells from toxicity<sup>[47]</sup>, suggesting that oligomerization of A $\beta$  peptide may be a key event in the development of cerebral atrophy. In addition, it has been reported that A $\beta$  oligomers can induce inflammation through RAGE receptor<sup>[48]</sup> and inhibition of RAGE has therapeutic potential to prevent A $\beta$ -induced inflammatory damage to the brain<sup>[49]</sup>. NF- $\kappa$ B, a key regulator of inflammation, is activated by A $\beta$  which then transcriptionally regulates IL-6 and IL-8<sup>[50]</sup>. HMGB1 binds to RAGE receptor to activate a multitude of proinflammatory genes<sup>[51]</sup>. Recent studies have shown that GKN1 can prevent amyloid aggregation and fibril formation and block the access of  $\gamma$ -secretase to APP *in vitro*<sup>[26,52]</sup>. Experimental studies showed that partial atrophy of the gastric mucosa in aging rat is not related to the inflammation and gastric mucosa of aging rat has increased susceptibility to injury by a variety of damaging agents<sup>[53,54]</sup>. Previously, we have reported that NKX6.3 transcriptionally suppresses reactive oxygen production and NF- $\kappa$ B activation which is required for expression of IL-6 and IL-8<sup>[55]</sup>. Here, we found that treatment with rA $\beta$  1-42 produced oligomeric forms of A $\beta$  and significantly decreased cell viability of HFE-145<sup>shNKX6.3</sup> cells (Figure 4A and B). In addition, NKX6.3 depletion dramatically increased expression of inflammatory cytokines and COX-2 by upregulating ApoE (Figure 5). These results are consistent with our previous report showing that NKX6.3 transcriptionally suppresses reactive oxygen production and NF- $\kappa$ B activation which is required for expression of IL-6 and IL-8<sup>[55]</sup>. Thus, upregulation of ApoE prompted by NKX6.3 depletion might play an important role in A $\beta$  oligomerization and gastric mucosal inflammation. These findings suggest that depletion of NKX6.3 may account for increased susceptibility of gastric epithelial cells to A $\beta$ -induced cytotoxicity and contribute to gastric mucosal atrophy.

In conclusion, NKX6.3 is a key regulator of gastric mucosal homeostasis *via* inhibiting both cell proliferation and apoptotic cell death. A $\beta$  accumulation was



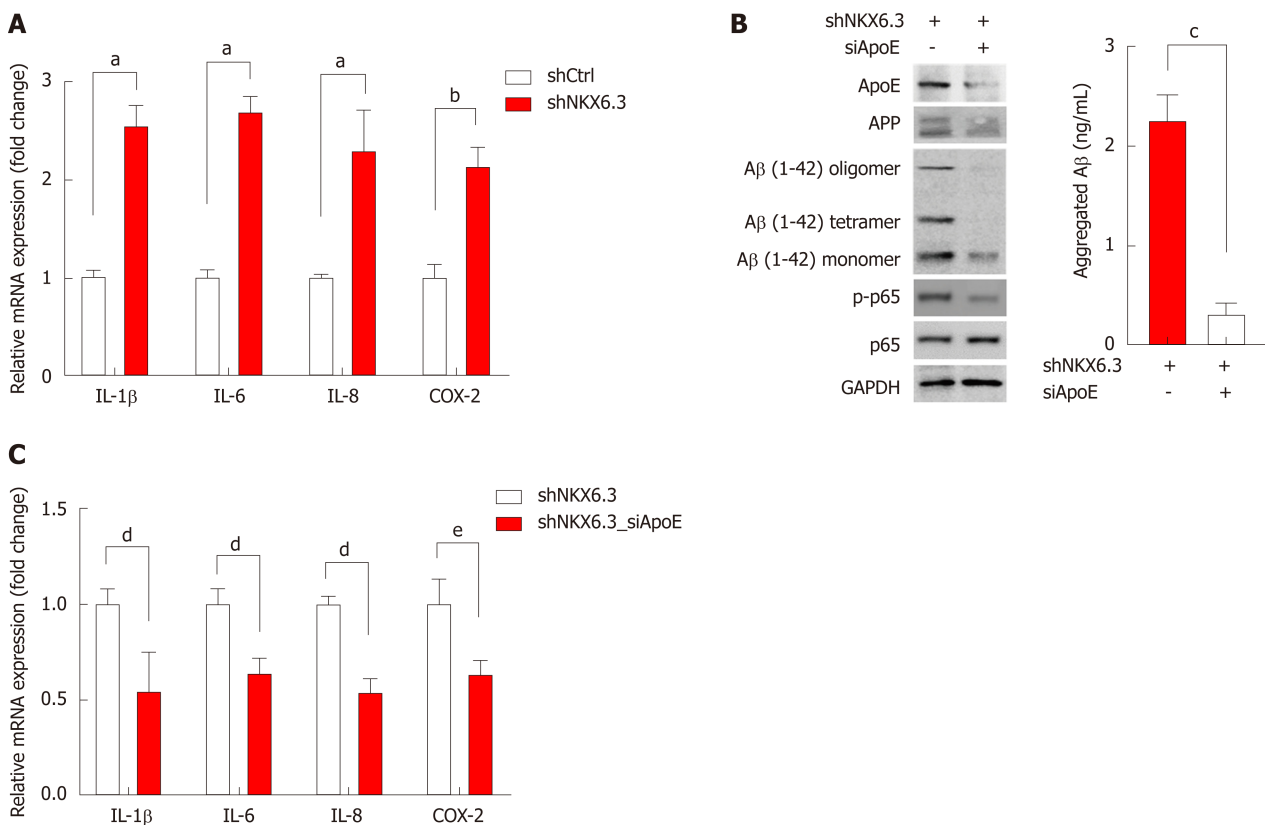


**Figure 4 Amyloid  $\beta$  induces cell death in gastric epithelial cells.** A: Treatment with recombinant amyloid  $\beta$  (rA $\beta$ ) 1-42 produced oligomeric forms of A $\beta$  in HFE-145<sup>shNKX6.3</sup> cells, but not in HFE-145<sup>shCtrl</sup> cells. Recombinant gastrin 1 (rGKN1) partially reduced expression of A $\beta$  oligomers. B: Treatment with rA $\beta$  1-42 did not affect viability of HFE-145<sup>shCtrl</sup> cells, although it significantly decreased viability of HFE-145<sup>shNKX6.3</sup> cells in a time dependent manner. Shown are the means  $\pm$  SEM from three experiments. Superscript letter represents significant difference (<sup>a</sup> $P$  < 0.05, <sup>b</sup> $P$  < 0.005 and <sup>c</sup> $P$  < 0.0001). C: Floating cell population was markedly increased in HFE-145<sup>shNKX6.3</sup> cells treated with rA $\beta$  1-42. Shown are the means  $\pm$  SEM from three experiments. Superscript letter represents significant difference (<sup>d</sup> $P$  < 0.001). D: In HFE-145<sup>shNKX6.3</sup> cells, treatment with rA $\beta$  1-42 for 72 hrs decreased cell viability while treatment with rGKN1 revoked the effect of rA $\beta$  on cell viability. Shown are the means  $\pm$  SEM from three experiments. Superscript letter represents significant difference (<sup>e</sup> $P$  < 0.05 and <sup>f</sup> $P$  < 0.005). rA $\beta$ : Recombinant amyloid  $\beta$ ; rGKN1: Recombinant gastrin 1; A $\beta$ : Amyloid  $\beta$ .

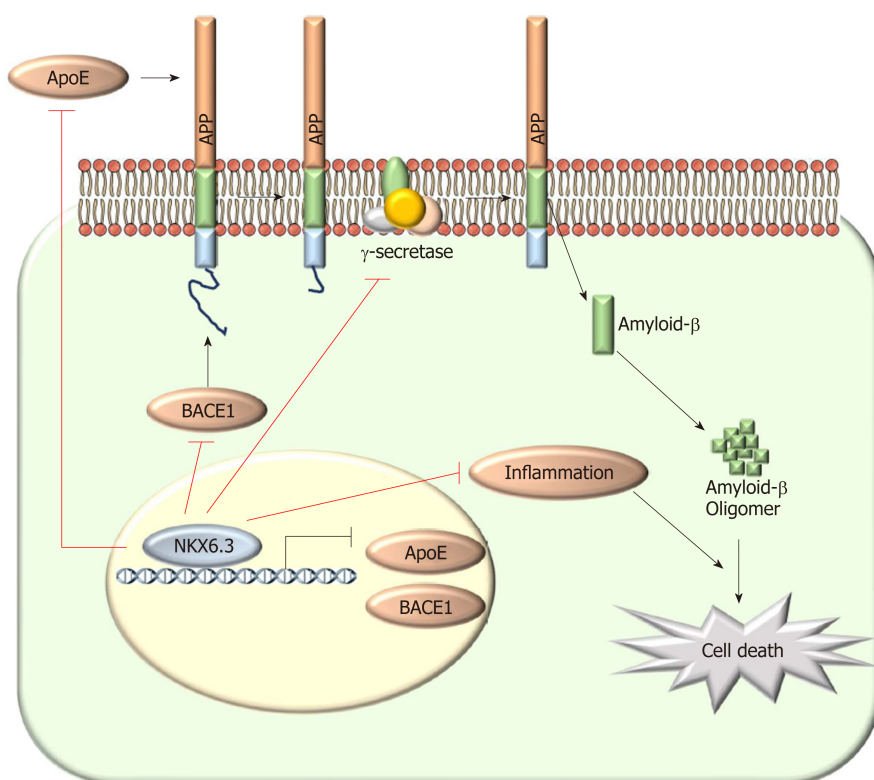
detected in the cytoplasm of HFE-145<sup>shNKX6.3</sup> cells and gastric mucosae with atrophy. NKX6.3 inhibited accumulation and oligomerization of A $\beta$  peptide in gastric epithelial cells by regulating A $\beta$  degradation or clearance pathways. Finally, NKX6.3 suppressed gastric mucosal inflammation by modulating ApoE-induced NF- $\kappa$ B and expression of cytokines. These observations provide evidence that NKX6.3 can restrain gastric mucosal atrophy by regulating A $\beta$  accumulation and inflammatory reaction in gastric epithelial cells (Figure 6).

**Table 1** Protein expression of amyloid  $\beta$  oligomer,  $\beta$ -secretase 1, apolipoprotein E, cleaved caspase-3, and *Helicobacter pylori* CagA was significantly associated with gastric mucosal atrophy and inversely correlated with NKX6.3 expression

	Atrophy				NKX6.3			Aβ oligomer			Bace1			ApoE			Cleaved Casp3		
	+	-	P value		+	-	P value	+	-	P value	+	-	P value	+	-	P value	+	-	P value
NKX6.3	+	3	33	0.0001															
	-	15	4																
Aβ oligomer	+	17	2	0.0001	3	16	0.0001												
	-	1	35		33	3													
Bace1	+	16	5	0.0001	2	19	0.0001	18	3	0.0001									
	-	2	32		34	0		1	33										
ApoE	+	18	5	0.0001	4	19	0.0001	19	4	0.0001	21	2	0.0001						
	-	0	32		32	0		0	32		0	32							
Cleaved Casp3	+	16	8	0.0001	5	19	0.0001	19	5	0.0001	21	3	0.0001	22	2	0.0001			
	-	2	29		31	0		0	31		0	31		1	30				
CagA	+	14	12	0.0041	9	17	0.0001	16	10	0.0002	19	7	0.0001	19	7	0.0001	21	5	0.0001
	-	4	25		27	2		3	26		2	27		4	25		3	26	

A $\beta$ : Amyloid  $\beta$ ; ApoE: Apolipoprotein E; Bace1:  $\beta$ -secretase 1; Casp3: Caspase-3.**Figure 5** NKX6.3 depletion induces inflammatory cytokine expression in gastric epithelial cells. A: NKX6.3 depletion in HFE-145<sup>shNKX6.3</sup> cells dramatically increased expression of inflammatory cytokines, including interleukin (IL)-1 $\beta$ , IL-6, and IL-8, and cyclooxygenase-2. Shown are the means  $\pm$  SEM from three experiments. Superscript letter represents significant difference (<sup>a</sup> $P$  < 0.005 and <sup>b</sup> $P$  < 0.001). B and C: In HFE-145<sup>shNKX6.3</sup> cells, silencing of apolipoprotein E (ApoE) with siApoE markedly inhibited oligomerization and aggregation of amyloid  $\beta$  and expression of nuclear factor kappa B p-p65 and inflammatory cytokines. Shown are the means  $\pm$  SEM from three experiments. Superscript letter represents significant difference (<sup>c</sup> $P$  < 0.05, <sup>d</sup> $P$  < 0.005 and <sup>e</sup> $P$  < 0.0001). IL: Interleukin; COX-2: Cyclooxygenase-2; ApoE: Apolipoprotein E; A $\beta$ : Amyloid  $\beta$ ; NF- $\kappa$ B: Nuclear factor kappa B.





**Figure 6 Schematic model of the role of NKX6.3 in gastric mucosal atrophy.** In gastric mucosal cells, NKX6.3 prevents gastric mucosal atrophy by regulating amyloid  $\beta$  (A $\beta$ ) peptide accumulation and oligomerization through inhibiting the  $\gamma$ -secretase complex formation and the expression of apolipoprotein E (ApoE), and  $\beta$ -secretase 1. In addition, NKX6.3 suppresses gastric mucosal inflammation by modulating ApoE-induced nuclear factor kappa B activity and expression of cytokines. A $\beta$ : Amyloid  $\beta$ ; ApoE: Apolipoprotein E; Bace1:  $\beta$ -secretase 1; NF- $\kappa$ B: Nuclear factor kappa B.

## ARTICLE HIGHLIGHTS

### Research background

Atrophic gastritis is characterized by loss of appropriate glands and considered as a precancerous condition of gastric cancer. However, little is known about the molecular mechanism underlying gastric mucosal atrophy. NKX6.3 plays a key role in the maintaining gastric epithelial homeostasis. Amyloid  $\beta$  (A $\beta$ ) acts as a neurotoxin that directly induces oxidative stress and receptor for advanced glycation end products (RAGE) mediates A $\beta$ -induced oxidative stress and inflammatory response. Increased expression of RAGE has been implicated in the pathogenesis of neuronal cell death. Interestingly, gastrin 1, a downstream target of NKX6.3, interacts with amyloid precursor protein (APP) and inhibits polymerization of A $\beta$ .

### Research motivation

A better understanding of molecular mechanism underlying gastric mucosal atrophy could protect against gastric mucosal atrophy and gastric carcinogenesis.

### Research objectives

To investigate whether NKX6.3 might play a critical role in the development of gastric mucosal atrophy by regulating A $\beta$  production.

### Research methods

We examined whether NKX6.3 depletion induces cell death by cell count and Western blot assay. Production and mechanism of A $\beta$  oligomer were analyzed by enzyme-linked immunosorbent assay, Western blot, immunoprecipitation, real-time quantitative polymerase chain reaction and immunofluorescence analysis in HFE-145 non-neoplastic gastric epithelial cells and gastric mucosal tissues. We further validated the correlation between expression of NKX6.3, *Helicobacter pylori* CagA, A $\beta$  oligomer, apolipoprotein E (ApoE), and  $\beta$ -secretase 1 (Bace1) in gastric mucosae.

### Research results

We found that NKX6.3 depletion increased floating cell populations in HFE-145 cells and induced production of A $\beta$  peptide oligomers. In addition, NKX6.3 depletion increased expression of APP, A $\beta$ , and RAGE proteins. In gastric mucosae with atrophy, expression of A $\beta$  peptide oligomer, ApoE, and Bace1 was detected and inversely correlated with NKX6.3 expression. Treatment with rA $\beta$  1-42 produced oligomeric forms of A $\beta$  and significantly

decreased cell viability only in HFE-145<sup>shNKX6.3</sup> cells. Furthermore, NKX6.3 depletion in HFE-145<sup>shNKX6.3</sup> cells increased expression of inflammatory cytokines and cyclooxygenase-2.

### Research conclusions

These data strongly suggest that NKX6.3 inhibit gastric mucosal atrophy by regulating A $\beta$  accumulation and inflammatory reaction in gastric epithelial cells.

### Research perspectives

Additional studies are needed to validate the results obtained. Identification of molecular mechanism underlying gastric mucosal atrophy could contribute to the prevention of atrophic gastritis and gastric cancer.

## ACKNOWLEDGEMENTS

We thank Dr. SeongYeob Ryu, Department of Gastroenterologic Surgery, Chonnam National University Hwasun Hospital, 160, Ilsim-ri, Hwasun-eup, Hwasun-gun, Jeollanam-do, 519-809, Korea, for providing the gastric cancer samples with clinical information.

## REFERENCES

- 1 **Watari J**, Chen N, Amenta PS, Fukui H, Oshima T, Tomita T, Miwa H, Lim KJ, Das KM. Helicobacter pylori associated chronic gastritis, clinical syndromes, precancerous lesions, and pathogenesis of gastric cancer development. *World J Gastroenterol* 2014; **20**: 5461-5473 [PMID: 24833876 DOI: 10.3748/wjg.v20.i18.5461]
- 2 **Joo YE**, Park HK, Myung DS, Baik GH, Shin JE, Seo GS, Kim GH, Kim HU, Kim HY, Cho SI, Kim N. Prevalence and risk factors of atrophic gastritis and intestinal metaplasia: a nationwide multicenter prospective study in Korea. *Gut Liver* 2013; **7**: 303-310 [PMID: 23710311 DOI: 10.5009/gnl.2013.7.3.303]
- 3 **Song JH**, Kim SG, Jin EH, Lim JH, Yang SY. Risk Factors for Gastric Tumorigenesis in Underlying Gastric Mucosal Atrophy. *Gut Liver* 2017; **11**: 612-619 [PMID: 28531911 DOI: 10.5009/gnl.16488]
- 4 **Uemura N**, Okamoto S, Yamamoto S, Matsumura N, Yamaguchi S, Yamakido M, Taniyama K, Sasaki N, Schlemper RJ. Helicobacter pylori infection and the development of gastric cancer. *N Engl J Med* 2001; **345**: 784-789 [PMID: 11556297 DOI: 10.1056/NEJMoa001999]
- 5 **Fox JG**, Wang TC. Helicobacter pylori—not a good bug after all. *N Engl J Med* 2001; **345**: 829-832 [PMID: 11556306 DOI: 10.1056/NEJM200109133451111]
- 6 **Ohata H**, Kitauchi S, Yoshimura N, Mugitani K, Iwane M, Nakamura H, Yoshikawa A, Yanaoka K, Arii K, Tamai H, Shimizu Y, Takeshita T, Mohara O, Ichinose M. Progression of chronic atrophic gastritis associated with Helicobacter pylori infection increases risk of gastric cancer. *Int J Cancer* 2004; **109**: 138-143 [PMID: 14735480 DOI: 10.1002/ijc.11680]
- 7 **Cappai R**, White AR. Amyloid beta. *Int J Biochem Cell Biol* 1999; **31**: 885-889 [PMID: 10533280]
- 8 **Lichtenthaler SF**. Alpha-secretase cleavage of the amyloid precursor protein: proteolysis regulated by signaling pathways and protein trafficking. *Curr Alzheimer Res* 2012; **9**: 165-177 [PMID: 21605033]
- 9 **Vassar R**, Bennett BD, Babu-Khan S, Kahn S, Mendiaz EA, Denis P, Teplow DB, Ross S, Amarante P, Loeloff R, Luo Y, Fisher S, Fuller J, Edenson S, Lile J, Jarosinski MA, Biere AL, Curran E, Burgess T, Louis JC, Collins F, Treanor J, Rogers G, Citron M. Beta-secretase cleavage of Alzheimer's amyloid precursor protein by the transmembrane aspartic protease BACE. *Science* 1999; **286**: 735-741 [PMID: 10531052]
- 10 **Yu G**, Nishimura M, Arawaka S, Levitan D, Zhang L, Tandon A, Song YQ, Rogaeva E, Chen F, Kawarai T, Supala A, Levesque L, Yu H, Yang DS, Holmes E, Milman P, Liang Y, Zhang DM, Xu DH, Sato C, Rogaev E, Smith M, Janus C, Zhang Y, Aebersold R, Farrer LS, Sorbi S, Bruni A, Fraser P, St George-Hyslop P. Nicastrin modulates presenilin-mediated notch/glp-1 signal transduction and betaAPP processing. *Nature* 2000; **407**: 48-54 [PMID: 10993067 DOI: 10.1038/35024009]
- 11 **Goutte C**, Tsunozaki M, Hale VA, Priess JR. APH-1 is a multipass membrane protein essential for the Notch signaling pathway in Caenorhabditis elegans embryos. *Proc Natl Acad Sci USA* 2002; **99**: 775-779 [PMID: 11792846 DOI: 10.1073/pnas.022523499]
- 12 **Li YM**, Xu M, Lai MT, Huang Q, Castro JL, DiMuzio-Mower J, Harrison T, Lellis C, Nadin A, Neduvetil JG, Register RB, Sardana MK, Shearman MS, Smith AL, Shi XP, Yin KC, Shafer JA, Gardell SJ. Photoactivated gamma-secretase inhibitors directed to the active site covalently label presenilin 1. *Nature* 2000; **405**: 689-694 [PMID: 10864326 DOI: 10.1038/35015085]
- 13 **Ahn K**, Shelton CC, Tian Y, Zhang X, Gilchrist ML, Sisodia SS, Li YM. Activation and intrinsic gamma-secretase activity of presenilin 1. *Proc Natl Acad Sci USA* 2010; **107**: 21435-21440 [PMID: 21115843 DOI: 10.1073/pnas.1013246107]
- 14 **Baranello RJ**, Bharani KL, Padmaraju V, Chopra N, Lahiri DK, Greig NH, Pappolla MA, Sambamurti K. Amyloid-beta protein clearance and degradation (ABCD) pathways and their role in Alzheimer's disease. *Curr Alzheimer Res* 2015; **12**: 32-46 [PMID: 25523424]
- 15 **Yan SD**, Chen X, Fu J, Chen M, Zhu H, Roher A, Slattery T, Zhao L, Nagashima M, Morser J, Migheli A, Nawroth P, Stern D, Schmidt AM. RAGE and amyloid-beta peptide neurotoxicity in Alzheimer's disease. *Nature* 1996; **382**: 685-691 [PMID: 8751438 DOI: 10.1038/382685a0]
- 16 **Schmidt AM**, Yan SD, Yan SF, Stern DM. The multiligand receptor RAGE as a progression factor amplifying immune and inflammatory responses. *J Clin Invest* 2001; **108**: 949-955 [PMID: 11581294 DOI: 10.1172/JCI14002]

- 17 **Hashimoto T**, Serrano-Pozo A, Hori Y, Adams KW, Takeda S, Banerji AO, Mitani A, Joyner D, Thyssen DH, Bacskai BJ, Frosch MP, Spires-Jones TL, Finn MB, Holtzman DM, Hyman BT. Apolipoprotein E, especially apolipoprotein E4, increases the oligomerization of amyloid  $\beta$  peptide. *J Neurosci* 2012; **32**: 15181-15192 [PMID: [23100439](#) DOI: [10.1523/JNEUROSCI.1542-12.2012](#)]
- 18 **Kanekiyo T**, Xu H, Bu G. ApoE and A $\beta$  in Alzheimer's disease: accidental encounters or partners? *Neuron* 2014; **81**: 740-754 [PMID: [24559670](#) DOI: [10.1016/j.neuron.2014.01.045](#)]
- 19 **LaFerla FM**, Hall CK, Ngo L, Jay G. Extracellular deposition of beta-amyloid upon p53-dependent neuronal cell death in transgenic mice. *J Clin Invest* 1996; **98**: 1626-1632 [PMID: [8833912](#) DOI: [10.1172/JCI118957](#)]
- 20 **Manczak M**, Reddy PH. Abnormal interaction of oligomeric amyloid- $\beta$  with phosphorylated tau: implications to synaptic dysfunction and neuronal damage. *J Alzheimers Dis* 2013; **36**: 285-295 [PMID: [23594602](#) DOI: [10.3233/JAD-130275](#)]
- 21 **Alanentalo T**, Chatonnet F, Karlen M, Sulniute R, Ericson J, Andersson E, Ahlgren U. Cloning and analysis of Nkx6.3 during CNS and gastrointestinal development. *Gene Expr Patterns* 2006; **6**: 162-170 [PMID: [16326147](#) DOI: [10.1016/j.modgep.2005.06.012](#)]
- 22 **Choi MY**, Romer AI, Wang Y, Wu MP, Ito S, Leiter AB, Shivdasani RA. Requirement of the tissue-restricted homeodomain transcription factor Nkx6.3 in differentiation of gastrin-producing G cells in the stomach antrum. *Mol Cell Biol* 2008; **28**: 3208-3218 [PMID: [18347062](#) DOI: [10.1128/MCB.01737-07](#)]
- 23 **Yoon JH**, Choi SS, Kim O, Choi WS, Park YK, Nam SW, Lee JY, Park WS. Inactivation of NKX6.3 in the stomach leads to abnormal expression of CDX2 and SOX2 required for gastric-to-intestinal transdifferentiation. *Mod Pathol* 2016; **29**: 194-208 [PMID: [26743476](#) DOI: [10.1038/modpathol.2015.150](#)]
- 24 **Yoon JH**, Choi WS, Kim O, Choi SS, Lee EK, Nam SW, Lee JY, Park WS. NKX6.3 controls gastric differentiation and tumorigenesis. *Oncotarget* 2015; **6**: 28425-28439 [PMID: [26314965](#) DOI: [10.18632/oncotarget.4952](#)]
- 25 **Yoon JH**, Choi YJ, Choi WS, Ashktorab H, Smoot DT, Nam SW, Lee JY, Park WS. GKN1-miR-185-DNMT1 axis suppresses gastric carcinogenesis through regulation of epigenetic alteration and cell cycle. *Clin Cancer Res* 2013; **19**: 4599-4610 [PMID: [23846337](#) DOI: [10.1158/1078-0432.CCR-12-3675](#)]
- 26 **Di Stadio CS**, Altieri F, Minopoli G, Miselli G, Rippa E, Arcari P. Role of human GKN1 on APP processing in gastric cancer. *Biochimie* 2017; **135**: 149-153 [PMID: [28214529](#) DOI: [10.1016/j.biochi.2017.02.007](#)]
- 27 **Choi WS**, Seo HS, Song KY, Yoon JH, Kim O, Nam SW, Lee JY, Park WS. Gastrophilin 1 expression in the human gastric mucosa is closely associated with the degree of gastritis and DNA methylation. *J Gastric Cancer* 2013; **13**: 232-241 [PMID: [24511419](#) DOI: [10.5230/jgc.2013.13.4.232](#)]
- 28 **Yoon JH**, Seo HS, Choi SS, Chae HS, Choi WS, Kim O, Ashktorab H, Smoot DT, Nam SW, Lee JY, Park WS. Gastrophilin 1 inhibits the carcinogenic potentials of *Helicobacter pylori* CagA. *Carcinogenesis* 2014; **35**: 2619-2629 [PMID: [25239641](#) DOI: [10.1093/carcin/bgu199](#)]
- 29 **Goure WF**, Krafft GA, Jerecic J, Hefti F. Targeting the proper amyloid-beta neuronal toxins: a path forward for Alzheimer's disease immunotherapeutics. *Alzheimers Res Ther* 2014; **6**: 42 [PMID: [25045405](#) DOI: [10.1186/alzrt272](#)]
- 30 **Currais A**, Quehenberger O, M Armando A, Daugherty D, Maher P, Schubert D. Amyloid proteotoxicity initiates an inflammatory response blocked by cannabinoids. *NPJ Aging Mech Dis* 2016; **2**: 16012 [PMID: [28721267](#) DOI: [10.1038/npjamd.2016.12](#)]
- 31 **Correa P**, Piazzuelo MB. The gastric precancerous cascade. *J Dig Dis* 2012; **13**: 2-9 [PMID: [22188910](#) DOI: [10.1111/j.1751-2980.2011.00550.x](#)]
- 32 **Atherton JC**. The pathogenesis of *Helicobacter pylori*-induced gastro-duodenal diseases. *Annu Rev Pathol* 2006; **1**: 63-96 [PMID: [18039108](#) DOI: [10.1146/annurev.pathol.1.110304.100125](#)]
- 33 **Nelson SB**, Janiesch C, Sander M. Expression of Nkx6 genes in the hindbrain and gut of the developing mouse. *J Histochem Cytochem* 2005; **53**: 787-790 [PMID: [15928328](#) DOI: [10.1369/jhc.5B6619.2005](#)]
- 34 **Palmblad M**, Westlind-Danielsson A, Bergquist J. Oxidation of methionine 35 attenuates formation of amyloid beta -peptide 1-40 oligomers. *J Biol Chem* 2002; **277**: 19506-19510 [PMID: [11912198](#) DOI: [10.1074/jbc.M112218200](#)]
- 35 **Butterfield DA**, Drake J, Pocernich C, Castegna A. Evidence of oxidative damage in Alzheimer's disease brain: central role for amyloid beta-peptide. *Trends Mol Med* 2001; **7**: 548-554 [PMID: [11733217](#)]
- 36 **Martins RN**, Harper CG, Stokes GB, Masters CL. Increased cerebral glucose-6-phosphate dehydrogenase activity in Alzheimer's disease may reflect oxidative stress. *J Neurochem* 1986; **46**: 1042-1045 [PMID: [3950618](#)]
- 37 **Wei W**, Norton DD, Wang X, Kusiak JW. Abeta 17-42 in Alzheimer's disease activates JNK and caspase-8 leading to neuronal apoptosis. *Brain* 2002; **125**: 2036-2043 [PMID: [12183349](#)]
- 38 **Sathya M**, Premkumar P, Karthick C, Moorthi P, Jayachandran KS, Anusuyadevi M. BACE1 in Alzheimer's disease. *Clin Chim Acta* 2012; **414**: 171-178 [PMID: [22926063](#) DOI: [10.1016/j.cca.2012.08.013](#)]
- 39 **Chow VW**, Mattson MP, Wong PC, Gleichmann M. An overview of APP processing enzymes and products. *Neuromolecular Med* 2010; **12**: 1-12 [PMID: [20232515](#) DOI: [10.1007/s12017-009-8104-z](#)]
- 40 **Hardy J**, Selkoe DJ. The amyloid hypothesis of Alzheimer's disease: progress and problems on the road to therapeutics. *Science* 2002; **297**: 353-356 [PMID: [12130773](#) DOI: [10.1126/science.1072994](#)]
- 41 **Luan ZG**, Zhang H, Yang PT, Ma XC, Zhang C, Guo RX. HMGB1 activates nuclear factor- $\kappa$ B signaling by RAGE and increases the production of TNF- $\alpha$  in human umbilical vein endothelial cells. *Immunobiology* 2010; **215**: 956-962 [PMID: [20163887](#) DOI: [10.1016/j.imbio.2009.11.001](#)]
- 42 **Li G**, Liang X, Lotze MT. HMGB1: The Central Cytokine for All Lymphoid Cells. *Front Immunol* 2013; **4**: 68 [PMID: [23519706](#) DOI: [10.3389/fimmu.2013.00068](#)]
- 43 **Kayed R**, Head E, Thompson JL, McIntire TM, Milton SC, Cotman CW, Glabe CG. Common structure of soluble amyloid oligomers implies common mechanism of pathogenesis. *Science*

- 2003; **300**: 486-489 [PMID: [12702875](#) DOI: [10.1126/science.1079469](#)]
- 44 **Walsh DM**, Klyubin I, Fadeeva JV, Cullen WK, Anwyl R, Wolfe MS, Rowan MJ, Selkoe DJ. Naturally secreted oligomers of amyloid beta protein potently inhibit hippocampal long-term potentiation in vivo. *Nature* 2002; **416**: 535-539 [PMID: [11932745](#) DOI: [10.1038/416535a](#)]
- 45 **Shankar GM**, Li S, Mehta TH, Garcia-Munoz A, Shepardson NE, Smith I, Brett FM, Farrell MA, Rowan MJ, Lemere CA, Regan CM, Walsh DM, Sabatini BL, Selkoe DJ. Amyloid-beta protein dimers isolated directly from Alzheimer's brains impair synaptic plasticity and memory. *Nat Med* 2008; **14**: 837-842 [PMID: [18568035](#) DOI: [10.1038/nm1782](#)]
- 46 **Gandy S**, Simon AJ, Steele JW, Lublin AL, Lah JJ, Walker LC, Levey AI, Krafft GA, Levy E, Checler F, Glabe C, Bilker WB, Abel T, Schmeidler J, Ehrlich ME. Days to criterion as an indicator of toxicity associated with human Alzheimer amyloid-beta oligomers. *Ann Neurol* 2010; **68**: 220-230 [PMID: [20641005](#) DOI: [10.1002/ana.22052](#)]
- 47 **De Felice FG**, Vieira MN, Saraiva LM, Figueroa-Villar JD, Garcia-Abreu J, Liu R, Chang L, Klein WL, Ferreira ST. Targeting the neurotoxic species in Alzheimer's disease: inhibitors of Abeta oligomerization. *FASEB J* 2004; **18**: 1366-1372 [PMID: [15333579](#) DOI: [10.1096/fj.04-1764com](#)]
- 48 **Minter MR**, Taylor JM, Crack PJ. The contribution of neuroinflammation to amyloid toxicity in Alzheimer's disease. *J Neurochem* 2016; **136**: 457-474 [PMID: [26509334](#) DOI: [10.1111/jnc.13411](#)]
- 49 **Sengupta U**, Nilson AN, Kaye R. The Role of Amyloid- $\beta$  Oligomers in Toxicity, Propagation, and Immunotherapy. *EBioMedicine* 2016; **6**: 42-49 [PMID: [27211547](#) DOI: [10.1016/j.ebiom.2016.03.035](#)]
- 50 **Park SY**, Jin ML, Kim YH, Kim Y, Lee SJ. Anti-inflammatory effects of aromatic-turmerone through blocking of NF- $\kappa$ B, JNK, and p38 MAPK signaling pathways in amyloid  $\beta$ -stimulated microglia. *Int Immunopharmacol* 2012; **14**: 13-20 [PMID: [22728094](#) DOI: [10.1016/j.intimp.2012.06.003](#)]
- 51 **Sims GP**, Rowe DC, Rietdijk ST, Herbst R, Coyle AJ. HMGB1 and RAGE in inflammation and cancer. *Annu Rev Immunol* 2010; **28**: 367-388 [PMID: [20192808](#) DOI: [10.1146/annurev.immunol.021908.132603](#)]
- 52 **Pavone LM**, Del Vecchio P, Mallardo P, Altieri F, De Pasquale V, Rea S, Martucci NM, Di Stadio CS, Pucci P, Flagiello A, Masullo M, Arcari P, Rippa E. Structural characterization and biological properties of human gastrophilin 1. *Mol Biosyst* 2013; **9**: 412-421 [PMID: [23319233](#) DOI: [10.1039/c2mb25308a](#)]
- 53 **Tarnawski A**, Pai R, Deng X, Ahluwalia A, Khomenko T, Tanigawa T, Akahoshi T, Sandor Z, Szabo S. Aging gastropathy-novel mechanisms: hypoxia, up-regulation of multifunctional phosphatase PTEN, and proapoptotic factors. *Gastroenterology* 2007; **133**: 1938-1947 [PMID: [18054565](#) DOI: [10.1053/j.gastro.2007.08.037](#)]
- 54 **Tarnawski AS**, Ahluwalia A, Jones MK. Increased susceptibility of aging gastric mucosa to injury: the mechanisms and clinical implications. *World J Gastroenterol* 2014; **20**: 4467-4482 [PMID: [24782600](#) DOI: [10.3748/wjg.v20.i16.4467](#)]
- 55 **Yoon JH**, Kim O, Nam SW, Lee JY, Park WS. NKX6.3 Regulates Reactive Oxygen Species Production by Suppressing NF- $\kappa$ B and DNMT1 Activities in Gastric Epithelial Cells. *Sci Rep* 2017; **7**: 2807 [PMID: [28584243](#) DOI: [10.1038/s41598-017-02901-y](#)]

P- Reviewer: Slomiany BL, Tarnawski AS

S- Editor: Ma RY L- Editor: A E- Editor: Huang Y





Published By Baishideng Publishing Group Inc  
7901 Stoneridge Drive, Suite 501, Pleasanton, CA 94588, USA  
Telephone: +1-925-2238242  
Fax: +1-925-2238243  
E-mail: [bpgoffice@wjgnet.com](mailto:bpgoffice@wjgnet.com)  
Help Desk: <http://www.f6publishing.com/helpdesk>  
<http://www.wjgnet.com>

