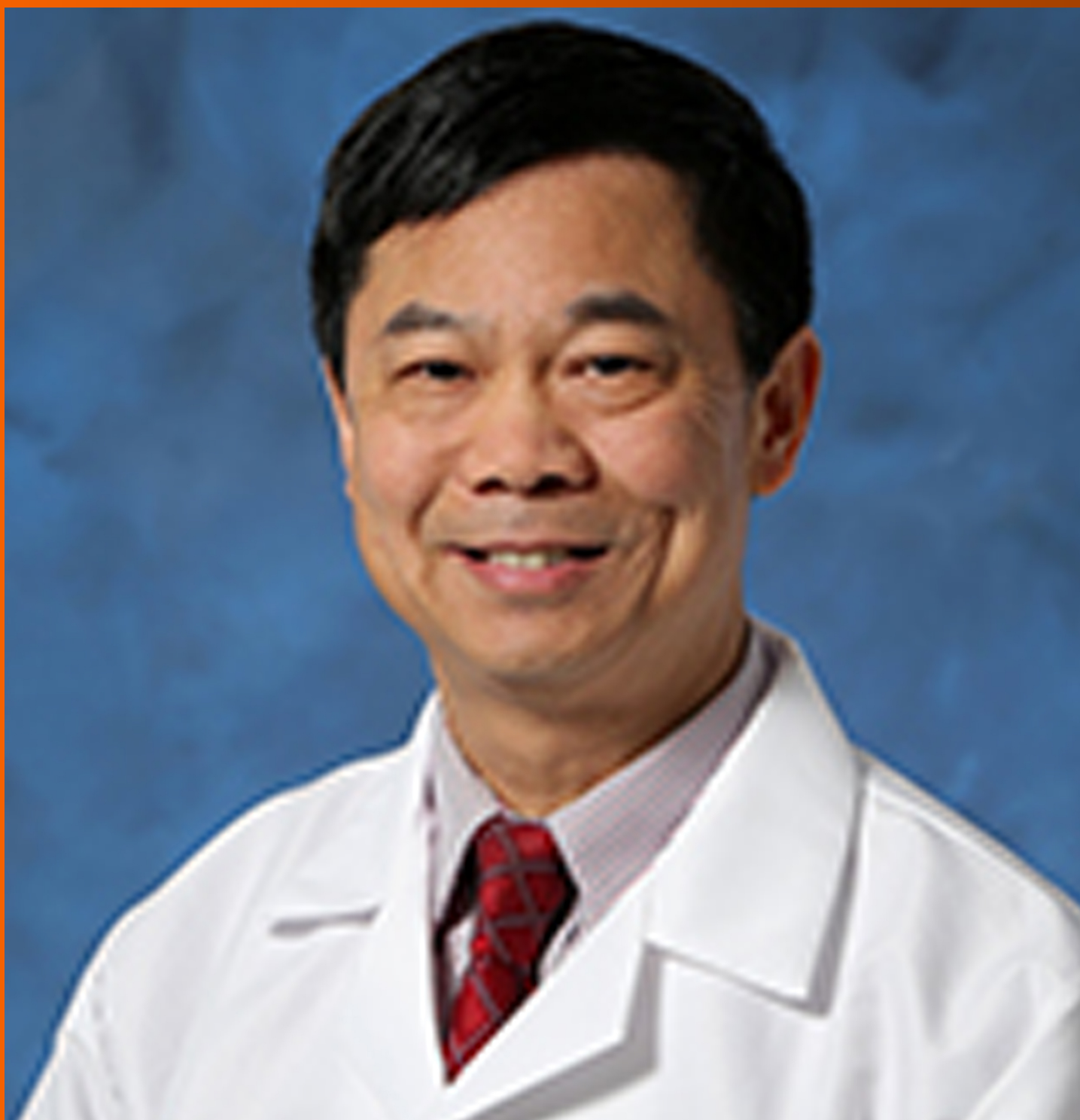


# World Journal of *Hepatology*

*World J Hepatol* 2019 February 27; 11(2): 138-249



**REVIEW**

- 138** Bariatric surgery in patients with non-alcoholic fatty liver disease - from pathophysiology to clinical effects  
*Laursen TL, Hagemann CA, Wei C, Kazankov K, Thomsen KL, Knop FK, Grønbaek H*
- 150** Colorectal liver metastases: An update on multidisciplinary approach  
*Chow FCL, Chok KSH*

**MINIREVIEWS**

- 173** Hepatic encephalopathy: Lessons from preclinical studies  
*Lima LCD, Miranda AS, Ferreira RN, Rachid MA, Simões e Silva AC*

**ORIGINAL ARTICLE****Case Control Study**

- 186** Comprehensive analysis of *HFE* gene in hereditary hemochromatosis and in diseases associated with acquired iron overload  
*de Campos WN, Massaro JD, Cançado ELR, Wiesel CEV, Simões AL, Teixeira AC, Souza FFD, Mendes-Junior CT, Martinelli ADLC, Donadi EA*

**Retrospective Cohort Study**

- 199** Clinical outcomes after major hepatectomy are acceptable in low-volume centers in the Caribbean  
*Cawich SO, Maharaj R, Naraynsingh V, Pearce N, Francis W, Bonadie KO, Thomas DA*

**Retrospective Study**

- 208** Central line-associated bloodstream infection among children with biliary atresia listed for liver transplantation  
*Triggs ND, Beer S, Mokha S, Hosek K, Guffey D, Minard CG, Munoz FM, Himes RW*

**CASE REPORT**

- 217** Parallel transjugular intrahepatic portosystemic shunt with Viatorr® stents for primary TIPS insufficiency: Case series and review of literature  
*Raissi D, Yu Q, Nisiewicz M, Krohmer S*
- 226** Necrolytic acral erythema in a human immunodeficiency virus/hepatitis C virus coinfecting patient: A case report  
*Oikonomou KG, Sarpel D, Abrams-Downey A, Mubasher A, Dieterich DT*

- 234** Acute portal vein thrombosis after liver transplant presenting with subtle ultrasound abnormalities: A case report and literature review  
*Couri T, Harmath C, Baker T, Pillai A*
- 242** Two-stage liver transplant for ruptured hepatic adenoma: A case report  
*Salhanick M, MacConmara MP, Pedersen MR, Grant L, Hwang CS, Parekh JR*

**ABOUT COVER**

Editor-in-Chief of *World Journal of Hepatology*, Ke-Qin Hu, FAASLD, MD, Director, Professor, Division of Gastroenterology and Hepatology, University of California, Irvine Medical Center, Orange, CA 92868, United States

**AIMS AND SCOPE**

*World Journal of Hepatology* (*World J Hepatol*, *WJH*, online ISSN 1948-5182, DOI: 10.4254), is a peer-reviewed open access academic journal that aims to guide clinical practice and improve diagnostic and therapeutic skills of clinicians.

*WJH* covers topics concerning liver biology/pathology, cirrhosis and its complications, liver fibrosis, liver failure, portal hypertension, hepatitis B and C and inflammatory disorders, steatohepatitis and metabolic liver disease, hepatocellular carcinoma, etc. Priority publication will be given to articles concerning diagnosis and treatment of hepatology diseases. The following aspects are covered: Clinical diagnosis, laboratory diagnosis, etc.

We encourage authors to submit their manuscripts to *WJH*. We will give priority to manuscripts that are supported by major national and international foundations and those that are of great basic and clinical significance.

**INDEXING/ABSTRACTING**

The *WJH* is now abstracted and indexed in PubMed, PubMed Central, Emerging Sources Citation Index (Web of Science), Scopus, China National Knowledge Infrastructure (CNKI), China Science and Technology Journal Database (CSTJ), and Superstar Journals Database.

**RESPONSIBLE EDITORS FOR THIS ISSUE**

Responsible Electronic Editor: Yan-Liang Zhang    Proofing Editorial Office Director: Ya-Juan Ma

**NAME OF JOURNAL**

*World Journal of Hepatology*

**ISSN**

ISSN 1948-5182 (online)

**LAUNCH DATE**

October 31, 2009

**FREQUENCY**

Monthly

**EDITORS-IN-CHIEF**

Ke-Qin Hu, Koo Jeong Kang, Nikolaos Pyrsopoulos

**EDITORIAL BOARD MEMBERS**

<https://www.wjnet.com/1948-5182/editorialboard.htm>

**EDITORIAL OFFICE**

Ya-Juan Ma, Director

**PUBLICATION DATE**

February 27, 2019

**COPYRIGHT**

© 2019 Baishideng Publishing Group Inc

**INSTRUCTIONS TO AUTHORS**

<https://www.wjnet.com/bpg/gerinfo/204>

**GUIDELINES FOR ETHICS DOCUMENTS**

<https://www.wjnet.com/bpg/GerInfo/287>

**GUIDELINES FOR NON-NATIVE SPEAKERS OF ENGLISH**

<https://www.wjnet.com/bpg/gerinfo/240>

**PUBLICATION MISCONDUCT**

<https://www.wjnet.com/bpg/gerinfo/208>

**ARTICLE PROCESSING CHARGE**

<https://www.wjnet.com/bpg/gerinfo/242>

**STEPS FOR SUBMITTING MANUSCRIPTS**

<https://www.wjnet.com/bpg/GerInfo/239>

**ONLINE SUBMISSION**

<https://www.f6publishing.com>



Retrospective Study

## Central line-associated bloodstream infection among children with biliary atresia listed for liver transplantation

Nicole D Triggs, Stacey Beer, Sonam Mokha, Kat Hosek, Danielle Guffey, Charles G Minard, Flor M Munoz, Ryan W Himes

**ORCID number:** Nicole D Triggs (0000-0003-0587-8026); Stacey Beer (0000-0001-7244-2033); Sonam Mokha (0000-0002-2633-8638); Kat Hosek (0000-0002-0667-3826); Danielle Guffey (0000-0003-3721-614X); Charles G Minard (0000-0003-4631-6943); Flor M Munoz (0000-0002-0457-7689); Ryan W Himes (0000-0002-0116-2613).

**Author contributions:** Triggs ND, Beer S and Himes RW contributed to research design; Triggs ND, Beer S, Mokha S, Hosek K, Guffey D, Minard CG, Munoz FM and Himes RW contributed to acquisition and analysis of data, drafting and/or critical revision of manuscript; all authors approval of final version of manuscript.

**Institutional review board**

**statement:** This study was approved by the Baylor College of Medicine Institutional Review Board and granted waiver of informed consent.

**Informed consent statement:** The Baylor College of Medicine Institutional Review Board granted waiver of informed consent for this project.

**Conflict-of-interest statement:** All authors declare no conflicts-of-interest related to this article.

**Open-Access:** This article is an open-access article which was selected by an in-house editor and fully peer-reviewed by external reviewers. It is distributed in accordance with the Creative

**Nicole D Triggs, Stacey Beer, Ryan W Himes,** Department of Pediatrics, Section of Gastroenterology, Hepatology, and Nutrition, Baylor College of Medicine, Houston, TX 77030, United States

**Sonam Mokha,** College of Arts and Sciences, Washington University in St. Louis, St. Louis, MO 63130, United States

**Kat Hosek,** Outcomes and Impact Service, Texas Children's Hospital, Houston, TX 77030, United States

**Danielle Guffey, Charles G Minard,** Dan L. Duncan Institute for Clinical and Translational Research, Baylor College of Medicine, Houston, TX 77030, United States

**Flor M Munoz,** Department of Pediatrics, Section of Infectious Disease, Baylor College of Medicine, Houston, TX 77030, United States

**Corresponding author:** Ryan W Himes, MD, Assistant Professor, Department of Pediatrics, Section of Gastroenterology, Hepatology, and Nutrition, Baylor College of Medicine, 6701 Fannin St, MWT 1010, Houston, TX 77030, United States. [rwHimes@texaschildrens.org](mailto:rwHimes@texaschildrens.org)

**Telephone:** +1-832-8221050

**Fax:** +1-832-8253633

### Abstract

#### BACKGROUND

Pre-transplant nutrition is a key driver of outcomes following liver transplantation in children. Patients with biliary atresia (BA) may have difficulty achieving satisfactory weight gain with enteral nutrition alone, and parenteral nutrition (PN) may be indicated. While PN has been shown to improve anthropometric parameters of children with BA listed for liver transplantation, less is known about the risks, particularly infectious, associated with this therapy among this specific group of patients.

#### AIM

To describe the incidence, microbiology, and risk factors of central line-associated bloodstream infection (CLABSI) among children with BA listed for liver transplantation.

#### METHODS

Retrospective review of children aged  $\leq 2$ -years of age with BA who were listed for primary liver transplantation at Texas Children's Hospital from 2008 through

Commons Attribution Non Commercial (CC BY-NC 4.0) license, which permits others to distribute, remix, adapt, build upon this work non-commercially, and license their derivative works on different terms, provided the original work is properly cited and the use is non-commercial. See: <http://creativecommons.org/licenses/by-nc/4.0/>

**Manuscript source:** Unsolicited manuscript

**Received:** November 14, 2018

**Peer-review started:** November 15, 2018

**First decision:** December 21, 2018

**Revised:** January 15, 2019

**Accepted:** January 26, 2019

**Article in press:** January 26, 2019

**Published online:** February 27, 2019

2015 ( $n = 96$ ). Patients with a central line for administration of PN ( $n = 63$ ) were identified and details of each CLABSI event were abstracted. We compared the group of patients who experienced CLABSI to the group who did not, to determine whether demographic, clinical, or laboratory factors correlated with development of CLABSI.

## RESULTS

Nineteen of 63 patients (30%, 95%CI: 19, 43) experienced 29 episodes of CLABSI during 4800 line days (6.04 CLABSI per 1000 line days). CLABSI was predominantly associated with Gram-negative organisms (14/29 episodes, 48%) including *Klebsiella* spp., *Enterobacter* spp., and *Escherichia coli*. The sole polymicrobial infection grew *Enterobacter cloacae* and *Klebsiella pneumoniae*. Gram-positive organisms (all *Staphylococcus* spp.) and fungus (all *Candida* spp.) comprised 9/29 (31%) and 6/29 (21%) episodes, respectively. No demographic, clinical, or laboratory factors were significantly associated with an increased risk for the first CLABSI event in Cox proportional hazards regression analysis

## CONCLUSION

There is substantial risk for CLABSI among children with BA listed for liver transplantation. No clinical, demographic, or laboratory factor we tested emerged as an independent predictor of CLABSI. While our data did not show an impact of CLABSI on the short-term clinical outcome, it would seem prudent to implement CLABSI reduction strategies in this population to the extent that each CLABSI event represents potentially preventable hospitalization, unnecessary healthcare dollar expenditures, and may exact an opportunity cost, in terms of missed allograft offers.

**Key words:** Parenteral nutrition; Central line-associated bloodstream infection; Pediatric; Microbiology; Central venous catheter

©The Author(s) 2019. Published by Baishideng Publishing Group Inc. All rights reserved.

**Core tip:** Rates of central line-associated bloodstream infection (CLABSI) are high among children with biliary atresia listed for liver transplantation. While most CLABSI represented enteric flora, *Candida* was isolated in 21% of events, suggesting that it may be appropriate to consider the use of antifungals in this population when empiric therapy doesn't lead to expected clinical improvement. Since no factors we tested appeared to predict CLABSI, we propose that prevention efforts should be focused on universal and meticulous application of known CLABSI-reducing strategies, such as line insertion bundles.

**Citation:** Triggs ND, Beer S, Mokha S, Hosek K, Guffey D, Minard CG, Munoz FM, Himes RW. Central line-associated bloodstream infection among children with biliary atresia listed for liver transplantation. *World J Hepatol* 2019; 11(2): 208-216

**URL:** <https://www.wjgnet.com/1948-5182/full/v11/i2/208.htm>

**DOI:** <https://dx.doi.org/10.4254/wjh.v11.i2.208>

## INTRODUCTION

Biliary atresia (BA) is a progressive obliterative cholangiopathy which presents in the first months of life and it is the most common indication for liver transplantation in children. While a patient's pre-operative nutritional status is an important driver of transplant outcomes<sup>[1-3]</sup>, malnutrition is prevalent among patients with BA<sup>[3-5]</sup>. Common nutritional rehabilitation strategies include provision of calorically dense enteral formulas, enrichment in medium chain triglycerides, and use of nasogastric feeding tubes. In spite of these efforts, many children with BA will fail to achieve the desired catch-up growth, and will ultimately be prescribed parenteral nutrition (PN). Although PN has been shown to improve the nutritional status of children with BA on the liver transplant waitlist<sup>[5,6]</sup>, PN delivered through a central venous catheter (CVC) introduces a new set of risks to the patient, including mechanical, infectious,



and metabolic complications. We sought to characterize infectious complications of PN, specifically central line-associated bloodstream infection (CLABSI) among children with BA on the liver transplant waitlist. The aim of our investigation was to describe the incidence and microbiology of CLABSI among this cohort of patients and to elucidate potential risk factors which might be leveraged for prevention efforts.

## MATERIALS AND METHODS

We identified children aged  $\leq 2$ -years of age with BA who were listed for primary liver transplantation at Texas Children's Hospital from 2008 through 2015. Utilization of a CVC for administration of PN was ascertained through pharmacy records, radiology reports, and clinical documentation. Demographic, anthropometric, laboratory, and clinical data were collected retrospectively through review of electronic medical records. The decision to use PN and its specific prescription was at the clinical discretion of the treating hepatologist, working together with a registered dietitian. Weight-for-length z-scores at the time of listing were calculated according to the World Health Organization standards using an online calculator available at <https://peditools.org/>.

Central line days accrued from the time of line insertion until line removal, liver transplantation, or removal of the patient from the transplant waitlist for a reason other than transplantation (*i.e.*, death, clinical deterioration, or clinical improvement), whichever came first.

Our operational definition of CLABSI is based on the Center for Disease Control and Prevention/National Healthcare Safety Network (CDC/NHSN) definition: laboratory-confirmed bloodstream infections, not secondary to infection at another body site, among patients with a CVC<sup>[7]</sup>. In contrast to the CDC/NHSN definition, however, which is designed to capture healthcare facility acquired infections, we regarded all CLABSI events as relevant, even if the place of origin was in the community. To that end, central line days accrued, and CLABSI events were recorded, for children while admitted in a healthcare facility and while at home.

According to our clinical practice, febrile patients with a CVC and no other localizing source were admitted to hospital. Broad-spectrum antibiotics were initiated, guided by sensitivities of prior blood cultures, when applicable. Antibiotics were tailored to the specific isolate when sensitivities were available. Daily blood cultures were obtained until two consecutive cultures were sterile. CVCs were removed if sterility was not achieved, or sooner, if clinical circumstances warranted. Seven to 14 d of parenteral antibiotic therapy was completed, starting from the first sterile day.

Data are presented as frequency with percent, means with standard deviations, or medians with 25<sup>th</sup> and 75<sup>th</sup> centiles. Chi-squared, Wilcoxon rank sum, or *t*-tests were used to compare groups, as appropriate. Kaplan-Meier survival analysis and Cox proportional hazards regression were used to analyze the time-to-the-first CLABSI event and Cox proportional hazards regression was used to evaluate risk factors for CLABSI. This study was approved by the Baylor College of Medicine institutional review board.

## RESULTS

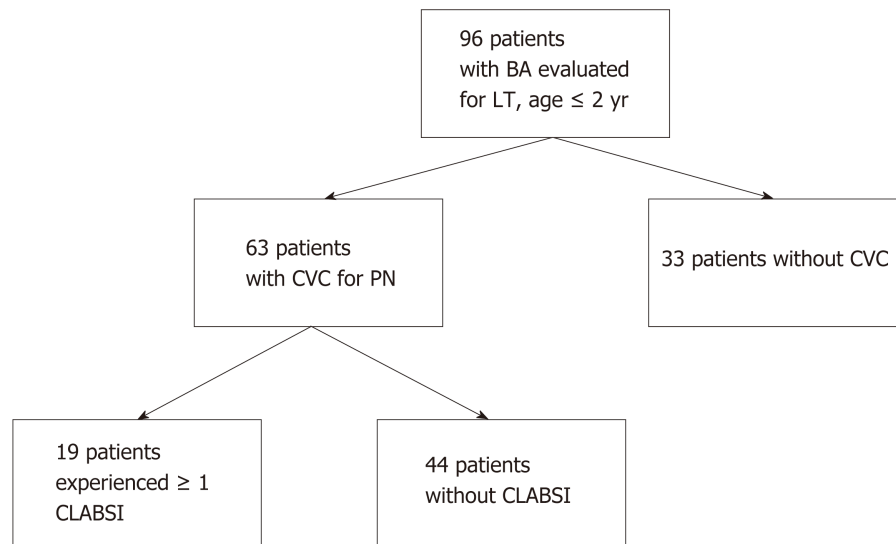
Ninety-six patients with BA,  $\leq 2$ -years of age, were listed for liver transplantation between 2008 and 2015 at our center. Sixty-three (66%) patients had a CVC placed for administration of PN. Nineteen of 63 patients (30%, 95%CI: 19, 43) experienced 29 episodes of CLABSI during 4800 line days (6.04 CLABSI per 1000 line days) (**Figure 1**).

### Baseline demographic and clinical data

Clinical and demographic data at the time of listing for liver transplantation are shown in **Table 1**. In univariate analyses, there was a higher proportion of patients with public or no insurance in the CLABSI group, compared to the no CLABSI group (84.2% *vs* 56.8%, *P* = 0.036). There were uniform, but non-significant trends, towards greater growth retardation in the CLABSI group, as mean length-for-age z-scores, weight-for-age z-scores, and weight-for-length z-scores were lower. Among all 63 patients with a CVC for administration of PN, the median age at the time of line placement was 6.6 mo (IQR 5.4, 9) and the median number of line days were 58 (IQR 30, 96), with a range of 4-255 d (data not shown).

### Characteristics of CLABSI events

Among patients who developed CLABSI, the median time to first event was 28 d (IQR



**Figure 1 Patient flowchart.** BA: Biliary atresia; LT: Liver transplant; CVC: Central venous catheter; PN: Parenteral nutrition; CLABSI: Central line-associated bloodstream infection.

12, 53). The earliest CLABSI occurred on line day 3 and the latest event on line day 80. Kaplan-Meier analysis revealed that 75% of patients remained free of CLABSI after 43 line days (95%CI: 21, 62, **Figure 2**). No demographic, clinical, or laboratory factors were significantly associated with an increased risk for the first CLABSI event in Cox proportional hazards regression analysis (**Table 2**).

Fourteen of 19 (74%) affected patients experienced a single episode of CLABSI. There were 3 patients with two episodes, and 1 patient experienced four and five episodes each. Only the patient with five episodes had the same organism isolated on more than one occasion, in this case *Klebsiella pneumoniae*. Overall, CLABSI was predominantly associated with Gram-negative organisms (14/29 episodes, 48%) including *Klebsiella* spp., *Enterobacter* spp., and *Escherichia coli*. The sole polymicrobial infection grew *Enterobacter cloacae* and *Klebsiella pneumoniae*. Gram-positive organisms (all *Staphylococcus* spp.) and fungus (all *Candida* spp.) comprised 9/29 (31%) and 6/29 (21%) episodes, respectively (**Figure 3**).

### Clinical outcomes

While the short-term clinical outcomes did not significantly differ between the two groups (**Table 1**), there were trends towards a higher rate of transplantation and a lower rate of clinical deterioration in the CLABSI group. The single waitlist death in the CLABSI group was not directly attributable to the CLABSI event.

## DISCUSSION

Nutritional rehabilitation is a cornerstone in the management of pediatric liver transplant candidates. Those ≤ 2-years of age with BA comprise a large and fairly homogenous group of patients whose nutritional deficits have been well-documented<sup>[2,4,8]</sup>. In spite of calorically dense enteral formulas and modular supplements, often delivered via nasogastric tubes, it is not uncommon for patients to still not achieve satisfactory growth. On the other hand, two studies have now demonstrated that PN improves the nutritional status (*i.e.*, mid-arm circumference and triceps skinfold thickness) of malnourished patients with BA on the transplant waitlist<sup>[5,6]</sup>, underscoring the important role this therapy plays in the nutritional optimization of liver transplant candidates.

In our large pediatric liver transplant program, about 2/3 of liver transplant candidates, ≤ 2-years of age, with BA received PN. This is higher than the 41% reported by Wendel *et al*<sup>[6]</sup>, and to the 53% reported by Sullivan *et al*<sup>[5]</sup>, though inclusion criteria were not identical. On a per patient basis, we observed that 30% of patients with a CVC for PN met rigorous criteria for CLABSI, similar to the 33% reported by Wendel *et al*<sup>[6]</sup>. While Sullivan *et al*<sup>[5]</sup> found 52% of their cohort with a CVC for PN had a positive blood culture, it is not known how many of these represented CLABSI, as opposed to secondary bacteremia or contaminants, making direct comparison impossible. Our CLABSI rate, 6.04/1000 line days, is greater than that of



**Table 1 Clinical and demographic data at time of liver transplant listing and short-term clinical outcome of patients with and without central line-associated bloodstream infection**

	No CLABSI	CLABSI	P value
<i>n</i> (%)	44 (70)	19 (30)	
Male, <i>n</i> (%)	11 (25)	5 (26)	0.91
Race, <i>n</i> (%)			
White	38 (86)	15 (79)	0.71
Black	5 (11)	3 (16)	
Asian	1 (2)	1 (5)	
Ethnicity, <i>n</i> (%)			
Hispanic	25 (57%)	9 (47%)	0.49
Primary language non-English, <i>n</i> (%)	12 (27)	3 (16)	0.32
Insurance, <i>n</i> (%)			0.036
Public/none	25 (57)	16 (84)	
Private	19 (43)	3 (16)	
Kasai portoenterostomy timing, <i>n</i> (%)			0.99
≤ 100 d	28 (64)	12 (63)	
> 100 d	2 (5)	1 (5)	
Not performed	14 (32)	6 (32)	
Age at listing, years, mean (SD)	0.59 (0.27)	0.61 (0.31)	0.89
Any home parenteral nutrition, <i>n</i> (%)	16 (36)	9 (47)	0.41
Anthropometrics			
Length, cm, mean (SD)	64.5 (3.8)	64.3 (3.6)	0.82
Weight, kg, mean (SD)	6.9 (1.3)	6.6 (1.1)	0.38
Length z-score, mean (SD)	-1.26 (1.47)	-1.57 (1.24)	0.43
Weight z-score, mean (SD)	-0.96 (1.26)	-1.44 (0.98)	0.15
WFL z-score, mean (SD)	-0.21 (1.13)	-0.58 (0.91)	0.21
Laboratory			
ALT, U/L, median (25 <sup>th</sup> , 75 <sup>th</sup> )	133 (90, 204)	128 (90, 233)	0.98
GGT, U/L, median (25 <sup>th</sup> , 75 <sup>th</sup> )	257 (106, 504)	364 (205, 800)	0.14
Albumin, g/dL, mean (SD)	3.1 (0.46)	3 (0.68)	0.88
Conjugated bilirubin, mg/dL, median (25 <sup>th</sup> , 75 <sup>th</sup> )	4.2 (0.95, 8.2)	3.7 (2, 5.7)	0.73
Total bilirubin, mg/dL, median (25 <sup>th</sup> , 75 <sup>th</sup> )	10.7 (3.5, 16.2)	11.3 (6.2, 12.7)	0.90
White blood cells, × 10 <sup>3</sup> /μL, median (25 <sup>th</sup> , 75 <sup>th</sup> )	10.2 (8.3, 15.6)	10.6 (7.4, 14.4)	0.88
Hemoglobin, g/dL, mean (SD)	9.9 (1.6)	10.2 (1.3)	0.56
Platelets, × 10 <sup>3</sup> /μL, median (25 <sup>th</sup> , 75 <sup>th</sup> )	123 (95, 217)	160 (102, 230)	0.41
INR, mean (SD)	1.6 (0.6)	2.3 (4.1)	0.28
BUN, mg/dL, mean (SD)	9.5 (5)	9.9 (4.6)	0.73
Prealbumin, mg/dL, mean (SD)	9.5 (3.6)	9.5 (4.3)	0.95
Clinical outcome			0.29
Transplanted	35 (80)	18 (95)	
Died on the waitlist or removed for too ill	6 (14)	1 (5)	
Removed from waitlist for too well	3 (7)	0	

CLABSI: Central line-associated bloodstream infection; SD: Standard deviation; WFL: Weight-for-length; ALT: Alanine aminotransferase; GGT: Gamma glutamyl transferase; INR: International normalized ratio; BUN: Blood urea nitrogen.

Wendel *et al*<sup>[6]</sup> (3.8/1000 line days), though it is not clear whether the same definition of CLABSI was used in their study. While these methodological differences may be barriers to generalizing CLABSI rates from center-to-center, and population-to-population, collectively our data calls attention to a facet of the care of transplant candidates which may be underappreciated. We would suggest that calculation and internal benchmarking of an individual program's CLABSI rate may be a good balancing measure on initiatives to improve the nutritional status of pediatric transplant candidates.

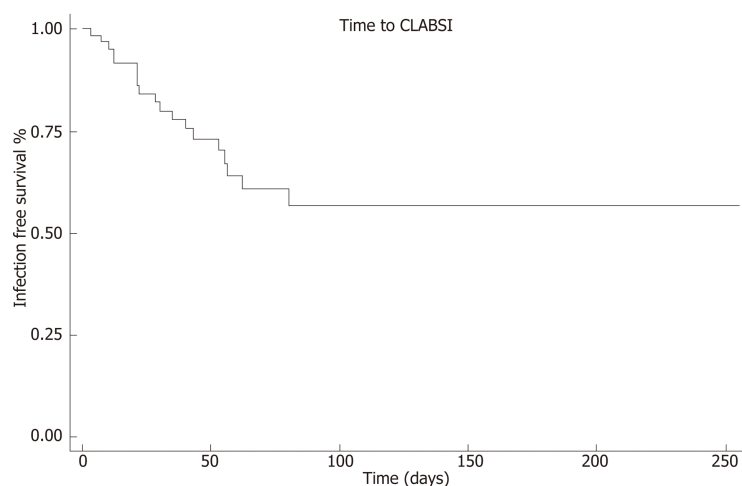
**Table 2 Demographic, clinical, and laboratory factors assessed as potential risk factors for central line-associated bloodstream infection**

	HR	95%CI	P value
Male	0.934	0.335-2.6	0.89
Race			
White	Reference		
Black	1.156	0.334-4	0.819
Asian	1.089	0.143-8.298	0.934
Ethnicity			
Hispanic	0.642	0.259	0.339
Primary Language non-English	0.531	0.154-1.832	0.317
Insurance			
Private	Reference		
Public/None	2.435	0.705-8.406	0.159
Kasai portoenterostomy timing			
≤ 100 d	0.852	0.319-2.275	0.749
> 100 d	1.33	0.159-11.126	0.792
Not performed	Reference		
Age at listing	1.883	0.379-9.36	0.439
Any home parenteral nutrition	0.811	0.323-2.035	0.656
Anthropometrics			
Length at listing	1.069	0.937-1.219	0.323
Weight at listing	1.036	0.67-1.672	0.872
Length z-score at listing	0.942	0.674-1.317	0.728
Weight z-score at listing	0.836	0.55-1.271	0.403
WFL z-score at listing	0.858	0.579-1.271	0.445
Laboratory			
ALT at listing	0.999	0.998-1.002	0.861
GGT at listing	1	0.999-1.001	0.176
Albumin at listing	0.853	0.314-2.314	0.775
Conjugated bilirubin at listing	0.991	0.91-1.079	0.842
Total bilirubin at listing	0.997	0.946-1.051	0.927
White blood cells at listing	1.016	0.93-1.109	0.724
Hemoglobin at listing	1.106	0.816-1.5	0.516
Platelets at listing	1.001	0.998-1.005	0.458
INR at listing	1.084	0.9593-1.225	0.196
BUN at listing	1.007	0.918-1.104	0.889
Prealbumin at listing	0.966	0.842-1.109	0.628

HR: Hazard ratio; CI: Confidence interval; WFL: Weight-for-length; ALT: Alanine aminotransferase; GGT: Gamma glutamyl transferase; INR: International normalized ratio; BUN: Blood urea nitrogen.

In our univariate analyses, children with public/no insurance were overrepresented in the CLABSI group. While our data do not offer potential explanations for this finding, it is congruent with an evolving body of literature which documents disparities in access to, or outcomes of, pediatric liver transplantation<sup>[9-11]</sup>. In agreement with Sullivan *et al*<sup>[5]</sup>, we did not find that CLABSI impacted short-term clinical outcomes, namely whether the patient was removed from the waitlist for transplantation, deterioration, or improvement. The single waitlist death in our CLABSI cohort was unrelated, however, Sullivan *et al*<sup>[5]</sup> reported 3 deaths among the 25 patients with BA who received PN, one of which was due to fungal sepsis, highlighting that this threat is tangible. Due to the relatively small number of individuals in each group, these findings should be interpreted with caution, however.

The microbiology of our CLABSI was predominantly Gram-negative, enteric organisms. Among children with BA, secondary bacteremia from ascending cholangitis is also a diagnostic consideration. However, care was taken in



**Figure 2 Time to central line-associated bloodstream infection survival analysis.** Kaplan-Meier curve of time to CLABSI indicates that 75% of patients remained free of CLABSI on line day 43. CLABSI: Central line-associated bloodstream infection.

adjudicating CLABSI to exclude positive blood cultures when a concurrent diagnosis of cholangitis was made. Given the difficulties in diagnosing cholangitis in young children though, the possibility remains that some cholangitis episodes were not recognized, which may have led to an overestimation of CLABSI. *Candida* comprised about 20% of our CLABSI events, therefore it may also be prudent to consider a fungal etiology for CLABSI among young transplant candidates with BA receiving PN.

As expected, time with a CVC is related to incident CLABSI; according to our survival analysis, 75% of our patients remained free of CLABSI on line day 43. While interventions to reduce total line days may reduce CLABSI, this strategy is difficult to implement in the transplant candidate. Uncertainty with regard to timing of transplantation and the lack of data to support specific clinical or laboratory thresholds for nutritional intervention breeds an environment in which PN is prescribed from the time enteral nutrition is deemed to be insufficient until transplantation. A better understanding of anthropometric or nutritional thresholds associated with specific clinical outcomes may help to more precisely utilize PN. In the meantime, strategies for CLABSI reduction which have been studied in other patient populations should be explored in transplant candidates as well. CVC insertion bundles and parental line care training<sup>[12]</sup>, ethanol locks<sup>[13]</sup>, and taurolidine locks<sup>[14]</sup> have been suggested for CLABSI reduction in children with other conditions receiving PN.

Strengths of our data include the comparatively large size of the cohort and the application of a CLABSI definition which captures both the events occurring within a healthcare environment and in the community. A principal limitation of our data is its retrospective nature; this precluded standardized data collection and led to non-uniform utilization criteria and prescriptions for PN. And while our sample size is large for study of a very specific sub-group of pediatric patients, in absolute terms, its size limits statistical power. Post-hoc power calculations suggest that the sample sizes observed in this study has about 67% power to detect a hazards ratio of 2.0 between two groups, assuming 30% of patients in one group have CLABSI and 9% in the second group, and  $\alpha = 0.05$  (two-sided). It is likely that only a concerted multi-center effort, like Studies in Pediatric Liver Transplantation, would be able to overcome the power problem, however information on CVC use is not currently collected in this registry.

In conclusion, our series calls attention to the substantial risk for CLABSI among children with BA listed for liver transplantation. No clinical, demographic, or laboratory factor we tested emerged as an independent predictor of CLABSI, but time with a CVC was directly related to incident CLABSI. While our data did not show an impact of CLABSI on the short-term clinical outcome, it would seem prudent to implement CLABSI reduction strategies in this population to the extent that each CLABSI event represents potentially preventable hospitalization, unnecessary healthcare dollar expenditures, and may exact an opportunity cost, in terms of missed allograft offers.

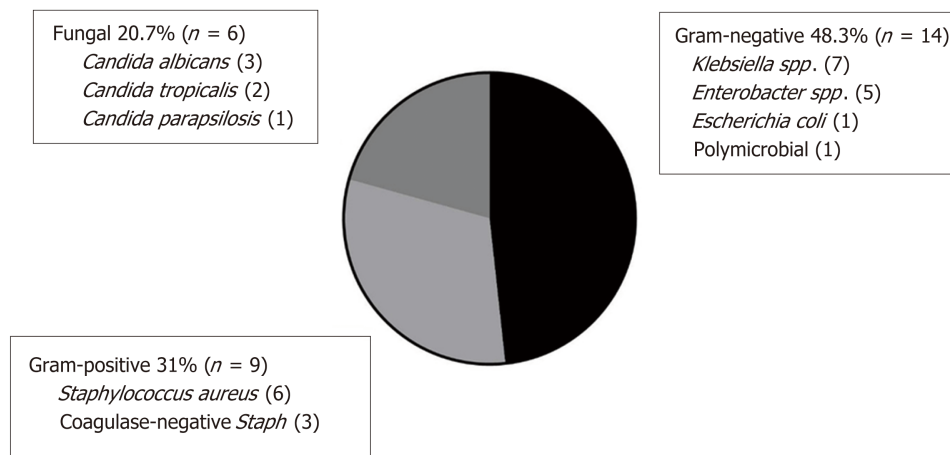


Figure 3 Microbiology of central line-associated bloodstream infection events.

## ARTICLE HIGHLIGHTS

### Research background

Children with biliary atresia (BA) undergoing liver transplantation benefit from pre-operative optimization of their nutritional status. When feeding enterally is insufficient to rehabilitate these patients, parenteral nutrition (PN) may be a useful adjunct. While this modality has been shown to improve the growth of children with BA listed for liver transplantation, it is also associated with distinct risks, chief among them the risk of infection associated with an indwelling central venous catheter.

### Research motivation

Our group was motivated to pursue this project so that the field might have a better understanding of the infectious risks of PN given to children with BA on the liver transplant waitlist, and thus make informed decisions regarding risk and benefit to the patient.

### Research objectives

The objective of our study was to describe the incidence, microbiology, and risk factors of central line-associated bloodstream infection (CLABSI) among children with BA listed for liver transplantation.

### Research methods

Retrospective, single-center review.

### Research results

Nineteen of 63 patients (30%) experienced 29 episodes of CLABSI during 4800 line days (6.04 CLABSI per 1000 line days). CLABSI were predominantly associated with Gram-negative organisms (14/29 episodes, 48%) including *Klebsiella spp.*, *Enterobacter spp.*, and *Escherichia coli*. The sole polymicrobial infection grew *Enterobacter cloacae* and *Klebsiella pneumoniae*. Gram-positive organisms (all *Staphylococcus spp.*) and fungus (all *Candida spp.*) comprised 9/29 (31%) and 6/29 (21%) episodes, respectively. There were no demographic, laboratory, or clinical features associated with CLABSI risk in our model.

### Research conclusions

CLABSI events are not rare among children with BA, receiving PN, while listed for liver transplantation. In spite of the frequency of events, CLABSI were not associated with mortality, or removal from the transplant waitlist due to becoming too ill to transplant. Since none of the factors tested in our model were associated with CLABSI risk, we propose meticulous application of known CLABSI-reducing strategies, such as line insertion bundles.

### Research perspectives

Owing to the relatively small volume of pediatric liver transplants performed, even at the largest centers, future efforts should consider leveraging existing databases, such as Studies in Pediatric Liver Transplantation, to address these questions.

## REFERENCES

- 1 Barshes NR, Chang IF, Karpen SJ, Carter BA, Goss JA. Impact of pretransplant growth retardation in pediatric liver transplantation. *J Pediatr Gastroenterol Nutr* 2006; **43**: 89-94 [PMID: 16819383 DOI: 10.1097/00006123-200602000-00009]

- 10.1097/01.mpg.0000226378.03247.1f]
- 2 **Shepherd RW**, Chin SE, Cleghorn GJ, Patrick M, Ong TH, Lynch SV, Balderson G, Strong R. Malnutrition in children with chronic liver disease accepted for liver transplantation: clinical profile and effect on outcome. *J Paediatr Child Health* 1991; **27**: 295-299 [PMID: 1931221 DOI: 10.1111/j.1440-1754.1991.tb02541.x]
- 3 **Utterson EC**, Shepherd RW, Sokol RJ, Bucuvalas J, Magee JC, McDiarmid SV, Anand R; Split Research Group. Biliary atresia: clinical profiles, risk factors, and outcomes of 755 patients listed for liver transplantation. *J Pediatr* 2005; **147**: 180-185 [PMID: 16126046 DOI: 10.1016/j.jpeds.2005.04.073]
- 4 **DeRusso PA**, Ye W, Shepherd R, Haber BA, Shneider BL, Whittington PF, Schwarz KB, Bezerra JA, Rosenthal P, Karpen S, Squires RH, Magee JC, Robuck PR, Sokol RJ; Biliary Atresia Research Consortium. Growth failure and outcomes in infants with biliary atresia: a report from the Biliary Atresia Research Consortium. *Hepatology* 2007; **46**: 1632-1638 [PMID: 17929308 DOI: 10.1002/hep.21923]
- 5 **Sullivan JS**, Sundaram SS, Pan Z, Sokol RJ. Parenteral nutrition supplementation in biliary atresia patients listed for liver transplantation. *Liver Transpl* 2012; **18**: 120-128 [PMID: 21987426 DOI: 10.1002/lt.22444]
- 6 **Wendel D**, Mortensen M, Harmeson A, Shaffer ML, Hsu E, Horslen S. Resolving Malnutrition With Parenteral Nutrition Before Liver Transplant in Biliary Atresia. *J Pediatr Gastroenterol Nutr* 2018; **66**: 212-217 [PMID: 29356765 DOI: 10.1097/MPG.0000000000001798]
- 7 **CDC**. Central Line-Associated Bloodstream Infection (CLABSI) Event. 2018; 1-19 Available from: URL: [https://www.cdc.gov/nhsn/pdfs/pscmanual/4psc\\_clabscurrent.pdf](https://www.cdc.gov/nhsn/pdfs/pscmanual/4psc_clabscurrent.pdf)
- 8 **Chin SE**, Shepherd RW, Thomas BJ, Cleghorn GJ, Patrick MK, Wilcox JA, Ong TH, Lynch SV, Strong R. The nature of malnutrition in children with end-stage liver disease awaiting orthotopic liver transplantation. *Am J Clin Nutr* 1992; **56**: 164-168 [PMID: 1609754 DOI: 10.1093/ajcn/56.1.164]
- 9 **Thammana RV**, Knechtle SJ, Romero R, Heffron TG, Daniels CT, Patzer RE. Racial and socioeconomic disparities in pediatric and young adult liver transplant outcomes. *Liver Transpl* 2014; **20**: 100-115 [PMID: 24136785 DOI: 10.1002/lt.23769]
- 10 **Hsu EK**, Shaffer M, Bradford M, Mayer-Hamblett N, Horslen S. Heterogeneity and disparities in the use of exception scores in pediatric liver allocation. *Am J Transplant* 2015; **15**: 436-444 [PMID: 25612496 DOI: 10.1111/ajt.13089]
- 11 **Arnon R**, Annunziato RA, Willis A, Parbhakar M, Chu J, Kerker N, Shneider BL. Liver transplantation for children with biliary atresia in the pediatric end-stage liver disease era: the role of insurance status. *Liver Transpl* 2013; **19**: 543-550 [PMID: 23447504 DOI: 10.1002/lt.23607]
- 12 **Muir A**, Holden C, Sexton E, Gray JW. Preventing bloodstream infection in patients receiving home parenteral nutrition. *J Pediatr Gastroenterol Nutr* 2014; **59**: 177-181 [PMID: 24796804 DOI: 10.1097/MPG.0000000000000419]
- 13 **Abu-El-Haija M**, Schultz J, Rahhal RM. Effects of 70% ethanol locks on rates of central line infection, thrombosis, breakage, and replacement in pediatric intestinal failure. *J Pediatr Gastroenterol Nutr* 2014; **58**: 703-708 [PMID: 24590214 DOI: 10.1097/MPG.0000000000000354]
- 14 **Chu HP**, Brind J, Tomar R, Hill S. Significant reduction in central venous catheter-related bloodstream infections in children on HPN after starting treatment with taurolidine line lock. *J Pediatr Gastroenterol Nutr* 2012; **55**: 403-407 [PMID: 22595973 DOI: 10.1097/MPG.0b013e31825bb0ae]

**P- Reviewer:** Kao JT, Pallav K, Qi XS

**S- Editor:** Ji FF **L- Editor:** A **E- Editor:** Zhang YL







Published By Baishideng Publishing Group Inc  
7901 Stoneridge Drive, Suite 501, Pleasanton, CA 94588, USA  
Telephone: +1-925-2238242  
Fax: +1-925-2238243  
E-mail: [bpgoffice@wjgnet.com](mailto:bpgoffice@wjgnet.com)  
Help Desk: <https://www.f6publishing.com/helpdesk>  
<https://www.wjgnet.com>

