

World Journal of *Stem Cells*

World J Stem Cells 2019 January 26; 11(1): 1-54



**EDITORIAL**

- 1** Human adult pluripotency: Facts and questions
Labusca L, Mashayekhi K

REVIEW

- 13** Applications of stem cells and bioprinting for potential treatment of diabetes
Kumar SA, Delgado M, Mendez VE, Joddar B
- 33** Current methods for the maturation of induced pluripotent stem cell-derived cardiomyocytes
Machiraju P, Greenway SC

ORIGINAL ARTICLE**Basic Study**

- 44** Regenerative potential of mouse embryonic stem cell-derived PDGFR α ⁺ cardiac lineage committed cells in infarcted myocardium
Hong SP, Song S, Lee S, Jo H, Kim HK, Han J, Park JH, Cho SW

ABOUT COVER

Editor-in-chief of *World Journal of Stem Cells*, Carlo Ventura, MD, PhD, Director, Full Professor, Department of Experimental, Diagnostic and Specialty Medicine (DIMES), School of Medicine University of Bologna, Bologna 40129, Italy

AIMS AND SCOPE

World Journal of Stem Cells (*World J Stem Cells*, *WJSC*, online ISSN 1948-0210, DOI: 10.4252), is a peer-reviewed open access academic journal that aims to guide clinical practice and improve diagnostic and therapeutic skills of clinicians.

WJSC covers topics concerning all aspects of stem cells: embryonic, neural, hematopoietic, mesenchymal, tissue-specific, and cancer stem cells; the stem cell niche, stem cell genomics and proteomics, etc.

We encourage authors to submit their manuscripts to *WJSC*. We will give priority to manuscripts that are supported by major national and international foundations and those that are of great basic and clinical significance.

INDEXING/ABSTRACTING

World Journal of Stem Cells (*WJSC*) is now indexed in PubMed, PubMed Central, Science Citation Index Expanded (also known as SciSearch®), Journal Citation Reports/Science Edition, Biological Abstracts, and BIOSIS Previews. The 2018 Edition of Journal Citation Reports cites the 2017 impact factor for *WJSC* as 4.376 (5-year impact factor: N/A), ranking *WJSC* as 7 among 24 journals in Cell and Tissue Engineering (quartile in category Q2), and 65 among 190 journals in Cell Biology (quartile in category Q2).

RESPONSIBLE EDITORS FOR THIS ISSUE

Responsible Electronic Editor: Wen-Wen Tan Proofing Editorial Office Director: Jin-Lei Wang

NAME OF JOURNAL

World Journal of Stem Cells

ISSN

ISSN 1948-0210 (online)

LAUNCH DATE

December 31, 2009

FREQUENCY

Monthly

EDITORS-IN-CHIEF

Tong Cao, Shengwen Calvin Li, Carlo Ventura

EDITORIAL BOARD MEMBERS

<https://www.wjnet.com/1948-0210/editorialboard.htm>

EDITORIAL OFFICE

Jin-Lei Wang, Director

PUBLICATION DATE

January 26, 2019

COPYRIGHT

© 2019 Baishideng Publishing Group Inc

INSTRUCTIONS TO AUTHORS

<https://www.wjnet.com/bpg/gerinfo/204>

GUIDELINES FOR ETHICS DOCUMENTS

<https://www.wjnet.com/bpg/GerInfo/287>

GUIDELINES FOR NON-NATIVE SPEAKERS OF ENGLISH

<https://www.wjnet.com/bpg/gerinfo/240>

PUBLICATION MISCONDUCT

<https://www.wjnet.com/bpg/gerinfo/208>

ARTICLE PROCESSING CHARGE

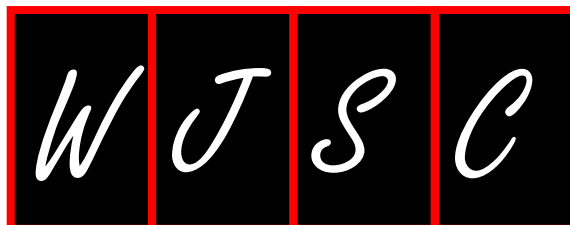
<https://www.wjnet.com/bpg/gerinfo/242>

STEPS FOR SUBMITTING MANUSCRIPTS

<https://www.wjnet.com/bpg/GerInfo/239>

ONLINE SUBMISSION

<https://www.f6publishing.com>



Current methods for the maturation of induced pluripotent stem cell-derived cardiomyocytes

Pranav Machiraju, Steven C Greenway

ORCID number: Pranav Machiraju (0000-0002-4589-4314); Steven C Greenway (0000-0002-6981-1720).

Author contributions: Both authors surveyed literature, wrote, and approved the manuscript.

Supported by Children's Cardiomyopathy Foundation, No. 2017.

Conflict-of-interest statement: Authors have no conflicts to disclose.

Open-Access: This article is an open-access article which was selected by an in-house editor and fully peer-reviewed by external reviewers. It is distributed in accordance with the Creative Commons Attribution Non Commercial (CC BY-NC 4.0) license, which permits others to distribute, remix, adapt, build upon this work non-commercially, and license their derivative works on different terms, provided the original work is properly cited and the use is non-commercial. See: <http://creativecommons.org/licenses/by-nc/4.0/>

Manuscript source: Invited manuscript

Received: October 30, 2018

Peer-review started: October 30, 2018

First decision: November 15, 2018

Revised: November 24, 2018

Accepted: January 10, 2019

Article in press: January 10, 2019

Published online: January 26, 2019

Pranav Machiraju, Departments of Pediatrics and Cardiac Sciences, Alberta Children's Hospital Research Institute, Libin Cardiovascular Institute of Alberta, Cumming School of Medicine, University of Calgary, Calgary T2N 4N1, Canada

Steven C Greenway, Departments of Pediatrics, Cardiac Sciences, Biochemistry & Molecular Biology, Alberta Children's Hospital Research Institute, Libin Cardiovascular Institute of Alberta, Cumming School of Medicine, University of Calgary, Calgary T2N 4N1, Canada

Corresponding author: Steven C Greenway, MSc, MD, FRCPC, Section of Cardiology, Alberta Children's Hospital, 28 Oki Drive NW, Calgary T3B 6A8, Canada. scgreenw@ucalgary.ca
Telephone: 1-403-9555049
Fax: 1-403-9557621

Abstract

Induced pluripotent stem cells (iPSCs) were first generated by Yamanaka and colleagues over a decade ago. Since then, iPSCs have been successfully differentiated into many distinct cell types, enabling tissue-, disease-, and patient-specific *in vitro* modelling. Cardiovascular disease is the greatest cause of mortality worldwide but encompasses rarer disorders of conduction and myocardial function for which a cellular model of study is ideal. Although methods to differentiate iPSCs into beating cardiomyocytes (iPSC-CMs) have recently been adequately optimized and commercialized, the resulting cells remain largely immature with regards to their structure and function, demonstrating fetal gene expression, disorganized morphology, reliance on predominantly glycolytic metabolism and contractile characteristics that differ from those of adult cardiomyocytes. As such, disease modelling using iPSC-CMs may be inaccurate and of limited utility. However, this limitation is widely recognized, and numerous groups have made substantial progress in addressing this problem. This review highlights successful methods that have been developed for the maturation of human iPSC-CMs using small molecules, environmental manipulation and 3-dimensional (3D) growth approaches.

Key words: Induced pluripotent stem cells; Induced pluripotent stem cell-derived cardiomyocytes; Regenerative medicine; Stem cell biology; Translational research

©The Author(s) 2019. Published by Baishideng Publishing Group Inc. All rights reserved.

Core tip: Induced pluripotent stem cells are key for generating disease-, patient-, and tissue-specific *in vitro* models. As such, induced pluripotent stem cells differentiated into

cardiomyocytes offer a potential tool for the understanding of disease and the development of life-saving therapeutics. Currently, cardiomyocytes can be differentiated with high efficiency but remain immature in their structure and function. Maturation of these cells is possible using a variety of approaches and will allow for more accurate disease modeling.

Citation: Machiraju P, Greenway SC. Current methods for the maturation of induced pluripotent stem cell-derived cardiomyocytes. *World J Stem Cells* 2019; 11(1): 33-43
URL: <https://www.wjgnet.com/1948-0210/full/v11/i1/33.htm>
DOI: <https://dx.doi.org/10.4252/wjsc.v11.i1.33>

INTRODUCTION

The discovery of induced pluripotent stem cells (iPSCs) by Takahashi *et al*^[1] launched a novel field of medicine. The ability to differentiate human iPSCs (hiPSCs) into various cell types allows for the generation of patient-, disease- and tissue-specific cells. These cells enable precise disease modelling, *in vitro* drug testing, and clinical regenerative medicine approaches^[1,2]. After a decade of research, iPSCs can now be successfully differentiated into hepatocytes^[3], cardiomyocytes^[4,5], neural cells^[6,7], adipocytes^[8] and many other cell types^[9].

Cardiovascular disease is the greatest cause of mortality worldwide^[10]. As such, modelling these diseases *in vitro* is of paramount importance to advance our understanding of disease and allow the development of new drug therapies. Cardiomyocytes derived from human iPSCs (hiPSC-CMs) enable the creation of a patient-, heart-, and disease-specific *in vitro* model^[5,11]. This is potentially most useful for the study of very rare cardiac disorders, including metabolic cardiomyopathies^[12]. These hiPSC-CMs are remarkably powerful as they replicate the genome of the patient donor and allow characterization of various diseases and drugs in a non-invasive manner^[2]. In addition, their ability to contract allows for characterization of contractility and can thus serve as an accurate and translatable cardiac drug model^[13]. Recent studies have also showcased hiPSC-CMs' ability to successfully engraft in a host organism^[14,15]. One published study used macaque monkeys as a model for cardiomyocyte transplant outcomes. Transplanting human embryonic pluripotent stem cell derived-cardiomyocytes (hEPSC-CMs) through an intra-myocardial injection allowed the cells to graft with the host. Once attached, these cells showed crucial electromechanical coupling with the host as demonstrated by echocardiography^[15]. Similar regenerative medicine studies have also been performed using small (guinea pigs) and large (pigs) animal models^[16,17].

Over the past few years, the efficiency of hiPSC-CM generation has been significantly improved. Methods involving modulation of the GSK and Wnt pathways using small-molecule inhibitors have been widely used^[5,18]. In addition, use of BMP and Activin A, along with the Matrigel sandwich method have proven successful^[18]. Commercial kits such as those from STEMCELL Technologies (Vancouver, BC, Canada) and ThermoFisher Scientific (Carlsbad, CA, United States) have also entered the market and provide researchers with increased reproducibility and the ease of simplified protocols (Figure 1). Traditionally, hiPSC-CM generation has been characterised through flow cytometry staining for Troponin T (TNNT2), a cardiac-specific protein, in addition to visual qualification of spontaneously beating cell clusters. Current protocols allow for the production of > 80%-90% TNNT2-positive hiPSC-CMs. This showcases the field's success in achieving high-purity cardiomyocyte differentiation^[2]. Through the use of lactate metabolic selection, > 99% TNNT2-positive cells have been successfully derived^[19]. The derivation of highly-purified cardiomyocyte populations represented an important step forward for the field of cardiac regenerative medicine.

Although hiPSC-CMs are now being produced with high efficiency, an important problem remains. The hiPSC-CMs generated with current protocols and commercial kits are qualitatively and quantitatively immature^[2,20,21]. For example, in addition to immature calcium handling, hiPSC-CMs display immature ultrastructural and electrophysiological features, low expression of key maturation markers, and rely on glycolysis for their metabolism as opposed to fatty acid metabolism^[2,20,22]. Immature cardiomyocytes have important differences when compared to adult cardiomyocytes and these differences may cause inaccurate disease modeling or drug testing and lead

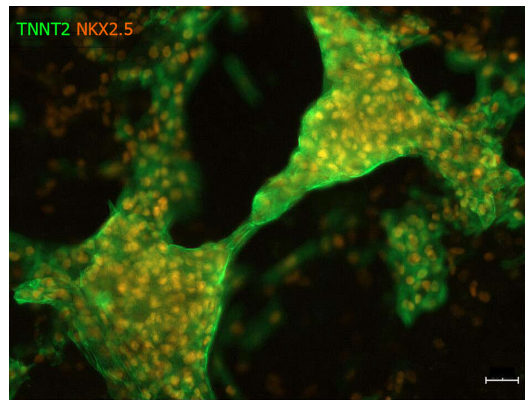


Figure 1 Human induced pluripotent stem cell-derived cardiomyocytes. Immunocytochemistry for TNNT2 cardiac marker (green) and NKX2.5 early-mesodermal marker (orange). HiPSCs were differentiated into hiPSC-CMs using ThermoFisher's Cardiomyocyte Differentiation kit. iPSCs were grown in a 6-well plate, differentiated into hiPSC-CMs for 14 d, fixed, stained, and then imaged using an epi-fluorescence microscope. Scale bar indicates 20 μ m.

to unsuccessful clinical translation. For example, the effect of cardiac drugs on contractile characteristics may be inaccurate when using an immature model. However, given that hiPSC-CMs are being derived from pluripotent cells, it is not unexpected that the initial differentiated cells generated will be immature or fetal in their characteristics. It is therefore reasonable to expect that an additional maturation protocol (Figure 2) will be necessary to generate cells that truly reflect the *in vivo* tissue. As such, many research groups are currently focussing on methods to promote the maturation of hiPSC-CMs so that they are suitable for accurate disease-modeling and clinical applications. Methods evaluated to date include electrical stimulation, mechanical stimulation, modulation of carbon source, growth on various substrates, and the development of 3D culture conditions or organoids. Studies have also shown the positive effect of prolonged culture time on hiPSC-CMs^[23,24]; however, culturing hiPSC-CMs for >90 d is neither time- nor cost-efficient and, given that these cells are usually cultured without antibiotics, remains a fraught enterprise. Therefore, other approaches must be used to create adult-like hiPSC-CMs within a reasonable time frame. Current protocols for hiPSC-CM production have failed to mature these cells due to a lack of knowledge regarding the mechanisms of heart maturation *in vivo*. At present, the field of cardiac regenerative medicine does not know the correct secretory factors, environmental cues, and external stimulation necessary to achieve proper adult-like cardiomyocytes. Maturing hiPSC-CMs is key to fully realizing the potential of these cells. Without proper maturation, hiPSC-CMs could cease to be clinically relevant. This review will examine the current methods for the maturation of iPSC-CM and suggest a way forward for the field.

ADULT CARDIOMYOCYTES VS hiPSC-CMs

Typically, adult cardiomyocytes differ from hiPSC-CMs in 4 important ways: (1) the expression of specific genes; (2) differing structural features; (3) altered metabolism; and (4) contractile function (Table 1)^[22].

Gene expression

Adult cardiomyocytes express high levels of important structural genes such as *MYH7* (myosin heavy chain 7), *N2B* (cardiac titin), *cTNI* (troponin I), and *SERCA2* (sarcoplasmic reticulum ATPase)^[22]. Adult cardiac heart tissues express high levels of genes such as *ITPR3* (inositol-1,4,5-triphosphate), *KCNH2* (potassium voltage-gated channel), *CAV3* (caveolin 3), and *RYR2* (ryanodine receptor 2)^[2]. The importance of *CASQ2* (calsequestrin 2), *COX6A2* (cytochrome oxidase), *S100A1* (calcium binding protein 1), *SCN5A* (sodium voltage-gated channel alpha subunit 5) and *MYOM2/3* (myomesin-2/3) as markers of maturation has also been demonstrated^[25]. In contrast, hiPSC-CMs display high levels of *MYH6* (myosin heavy chain 6) as opposed to *MYH7*, predominantly display the *N2A* isoform of cardiac titin instead of *N2B*^[22] and have lower expression of other genes that are highly expressed in adult cardiomyocytes^[26,27].

Structural features

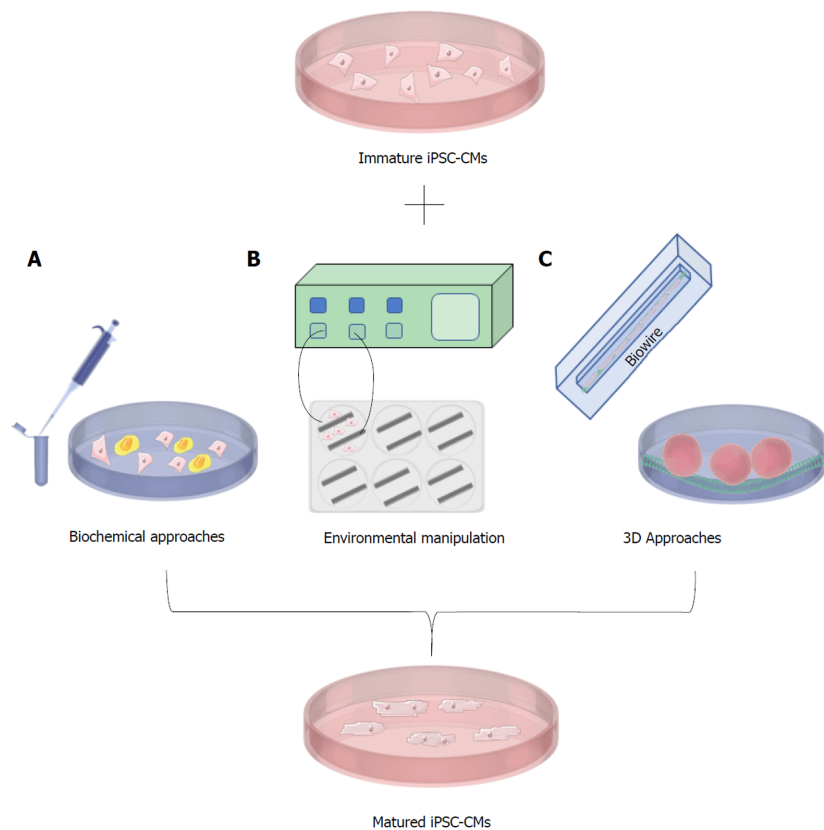


Figure 2 Methods for the maturation of induced pluripotent stem cell-derived cardiomyocytes. A: Biochemical approaches involving the use of small-molecules and hormones, along with co-incubation with human mesenchymal stem cells; B: Environmental manipulation illustrated through the use of electrical stimulation to mature iPSC-CMs; C: 3-dimensional approaches showcased by Biowire, and 3D cardiac organoid generation in ECM layered tissue-culture plates.

Structurally, adult cardiomyocytes display a high length-to-width ratio, may be bi-nucleated, and form sophisticated structures such as T-tubules and the sarcoplasmic reticulum within the sarcomere's Z-line^[22]. T-tubules are significant due to their role in contraction propagation^[28]. Absent or disrupted T-tubules have been implicated in heart failure in animal models^[29]. Adult cardiomyocytes display Z-discs, I-, H-, A- and M- bands. In addition, adult cardiomyocytes have sarcomeres that are long (2.2 μm) and highly organized^[22]. These cells also possess large numbers of mitochondria due to the heart's ceaseless energetic demands. Myocardial mitochondria tend to be evenly distributed throughout the cell and account for 20%-40% of cell size^[22]. In contrast, immature hiPSC-CMs tend to be round, usually mono-nucleated, and the sarcomere is disorganized and shorter (1.6 μm). These cells also do not possess T-tubules and only have Z-discs and I- bands^[22].

Metabolism

Metabolically, adult cardiomyocytes rely primarily on fatty acid oxidation as opposed to glycolysis for efficient energy production and have high levels of oxidative phosphorylation. In contrast, hiPSC-CMs mainly rely on glucose and lactate but do possess some capacity to metabolize fatty acids^[2,22,27].

Contractile function

Adult cardiomyocytes tend to be more quiescent in terms of beating but generate greater force, upstroke and conduction velocities when stimulated^[2,22]. In contrast, hiPSC-CMs have lower conduction and upstroke velocities but, due to an increase in the pacemaker current I_f , are still able to beat spontaneously^[2,22].

BIOCHEMICAL APPROACHES FOR MATURATION

One approach for the maturation of hiPSC-CMs involves the manipulation of growth conditions through the addition of small molecules or changes in culture medium.

Table 1 Properties of adult cardiomyocytes vs currently generated Cardiomyocytes derived from human induced pluripotent stem cells

| Properties | Adult cardiomyocytes | hiPSC-CMs |
|-----------------|--|--|
| Gene expression | Higher: MYH7, N2B, <i>cTnI</i> , SERCA2, ITPR3, CAV3, RYR2, CASQ2, COX6A2, S100A1, SCN5A, MYOM2/3 Lower: MYH6, N2A | Higher: MYH6, N2A Lower: MYH7, N2B, <i>cTnI</i> , SERCA2, ITPR3, CAV3, RYR2, CASQ2, COX6A2, S100A1, SCN5A, MYOM2/3 |
| Structure | Elongated, high length to width ratio | Round, low length to width ratio |
| Sarcomere | Longer, organized | Shorter, unorganized |
| Types of nuclei | Some bi-nucleated | Mainly mono-nucleated |
| Banding | I-, H-, A-, M- and Z-discs | Z-discs and I-bands |
| T-tubules | Yes | No |
| Metabolism | Fatty acids, energy production through OXPHOS | Glucose, lactate, and fatty acids if present |
| Contractility | No spontaneous beating. Higher force, upstroke and conduction velocities | High spontaneous beating. Lower force, upstroke and conduction velocities |

hiPSC-CMs: Cardiomyocytes derived from human induced pluripotent stem cells.

Tri-iodo-L-thyronine (T3), has shown promise in stimulating the maturation of hiPSC-CMs^[30]. One study noted larger cell sizes and increased sarcomere length, in addition to higher contractile force and increased mitochondrial respiration capacity post-T3 treatment. Treated hiPSC-CMs also exhibited lower proliferative activity and improved calcium handling properties^[30]. The authors of this study treated hiPSC-CMs with 20 ng/ml of T3 and noticed key morphological differences. Upon treatment, hiPSC-CMs became significantly less round and more elongated^[30]. In addition, they found that cell size also increased post-T3 treatment. T3 treatment also resulted in higher expression of key maturation markers. The authors also showed that treated hiPSC-CMs exhibited increased contractile force as quantified through micropost arrays. Treated hiPSC-CMs exhibited a contractile force of 12.3 ± 0.7 nmol/L/cell while control cells were significantly lower at 7.5 ± 0.4 nmol/L/cell^[30]. The mechanism of T3 in hiPSC-CM maturation is not completely understood; however, T3 has been shown to have an important role in cardiomyocyte differentiation through transcriptional regulation. Interestingly, blocking the action of T3 results in lower cardiomyocyte yield. It is hypothesized that downstream effects of T3 signaling may be responsible^[30]. Studies suggest T3 by itself is insufficient in achieving maturation of hiPSC-CMs to an adult-like state. However, combining hormonal approaches with other strategies may be more successful. For example, treatment of hiPSC-CMs with both T3 and dexamethasone has shown success in furthering the maturational state of hiPSC-CMs^[31]. When hiPSC-CMs were cultured with both chemicals for 15 days, an extensive T-tubule network was generated, a key indicator of adult-like cardiomyocytes as the extensions are crucial in contractility^[31]. Many heart diseases result in defective T-tubule structures and therefore impaired contractility^[29].

As current protocols for iPSC-CM generation result in cells that rely on glycolysis instead of fatty acid metabolism for energy, there has been recent emphasis on maturing hiPSC-CMs metabolically. One way of achieving this is through the use of glucose-free medium, forcing hiPSC-CMs to rely upon fatty acid metabolism. One study showcased how altering the metabolic state of hiPSC-CMs can induce increased maturation^[32]. The authors exposed hiPSC-CMs to glucose-free medium containing insulin and fatty acids for three days. Doing so increased the sarcomere length significantly, showing the effect of altering metabolism on the structural features of the cell. In addition, this sarcomere length increase was correlated with improved electrophysiological characteristics^[32]. Specifically, the upstroke velocity and duration of the action potential was increased in treated cells. Various maturation-related genes also displayed increased expression. A comparable study was carried out recently and displayed similar results. Correia *et al*^[33] showed how the maturation state of hiPSC-CMs can be altered through the addition of galactose and fatty acids, accompanied by removal of glucose from the medium. Their experiments improved the metabolic, structural, and electrophysiological state of hiPSC-CMs. Immature hiPSC-CMs show remarkable flexibility in adapting to growth conditions. As such, incubating these cells with fatty acid-rich, glucose-free medium seems to be altering the transcriptional signature of these cells towards a more mature phenotype. As the immature hiPSC-CMs suddenly face glucose starvation, they may be pushed towards increasing transcription of genes key in metabolizing fatty acids in order to survive. As mentioned, fatty acid metabolism is characteristic of adult cardiomyocytes. Altering

the carbon source of hiPSC-CMs is easy to implement and these studies have shown its relative efficacy in maturing hiPSC-CMs.

Co-culturing hiPSC-CMs with other cell types has also been shown to further the maturation state of these cells^[34]. Yoshida *et al*^[34] describe matured hiPSC-CMs resulting from co-incubation with human mesenchymal stem cells hMSCs. As mesenchymal stem cells are reported to secrete factors key to the differentiation and electrical coupling of hiPSC-CMs, they sought to elucidate its effect on iPSC-CM maturity. The authors reported increased structural maturation through aligned A-, H-, and I- myofibrils, increased gap junction formation, increased energy production, and reduced reactive oxygen species production under stress^[34]. This study then implicated VEGF, bFGF, SDF-1, and GM-CSF as secreted factors from hMSCs that are key in hiPSC-CM maturation. It is thought that secretion of these factors into hiPSC-CM cultures is able to induce maturation through upregulation of crucial adult cardiomyocyte gene *MYH7*.

The approaches mentioned in this section have all reported an increase in the maturation state of hiPSC-CMs. These approaches are simple and practical to implement but there are some key disadvantages. First, no study to date has shown complete maturation of hiPSC-CMs using only these methods. Although these methods further the state of maturation in these cells structurally, metabolically and electrophysiologically, they still do not create cells that fully recapitulate adult cardiomyocytes. These approaches may need to be combined with other more complex techniques such as electrical and mechanical stimulation.

ENVIRONMENTAL MANIPULATION

A hallmark of immature hiPSC-CMs is their electrical immaturity. These cells often display low expression of I_{Ks} potassium and I_{Na} sodium channels^[2,22]. In addition, immature hiPSC-CMs spontaneously beat suggesting increased expression of the pacemaker current I_f ^[22]. To transition hiPSC-CMs into a mature electrical state, the use of electrical and/or mechanical stimulation is being extensively explored. Although potentially cost- and resource-prohibitive, these approaches may prove vital in the quest towards complete maturation of hiPSC-CMs. Cardiomyocytes can be subjected to various mechanical and electrical forces in an effort to mature them electrically. Previous studies elucidated the effects electrical pacing can have on cultured cardiomyocytes. In 2006, Brundel *et al*^[35] showed the use of an *in vitro* system to model alterations in the contractility of cardiomyocytes by displaying how electrical pacing can induce tachycardia. Another study showed how stimulating canine cardiomyocytes through 24-h pacing can actually remodel the electrical features of the cells^[36]. Furthermore, many studies have shown how electrical pacing can cause activation of L-type calcium channels, elevate intracellular Ca^{2+} levels and therefore stimulate increased contractility^[37-39]. In hiPSC-CMs, authors of one study subjected these cells to both mechanical static stress (through maintenance of a fixed construct length) and mechanical static stress with electrical pacing conditions for 2 wks post-differentiation^[40]. Their results were exciting as hiPSC-CMs exposed to both static stress and static stress with electrical conditioning experienced increased maturation. Both treatment groups experienced increased cell alignment, Frank-Starling force-length relationships, increased contractility, tensile stiffness and cell size^[40]. These results display the success of mechanical and electrical stress in enhancing the maturation state of hiPSC-CMs^[40].

One recent study showed the ability of heart muscle engineered through hiPSC-CMs to structurally and functionally mature through the use of passive stretch^[41]. The authors created engineered tissue with the use of computational modelling and polydimethylsiloxane reservoirs to create passive stretch. They found that the tissue displaying a stretch of 7 mm resulted in the hiPSC-CMs showing increased expression of maturation genes involved in the troponin complexes along with potassium ion channels and T-tubule proteins^[41]. This result suggests that passive stretch was able to induce both structural and functional changes in hiPSC-CMs. Other studies have also shown similar results suggesting that electrical and mechanical stimulation is an effective promoter of cardiomyocyte maturation^[42-44].

Another promising approach involves the addition of conductive materials to the cell substrate or matrix. For example, the addition of polypyrrole chitosan (PPC) to create a composite hydrogel has shown great promise as a biomaterial capable of improving the conduction between clusters of cardiomyocytes. The authors of one study used calcium imaging to show how PPC improved electrical signal propagation between isolated rat cardiomyocytes and synchronized their contraction^[45]. Although the effect of this hydrogel is yet to be evaluated in hiPSC-CMs, previously mentioned

literature has suggested that electrical stimulus is an important variable in achieving mature iPSC-CM populations.

As electrical and mechanical stimulation becomes more prevalent as a tool for hiPSC-CM maturation, private biotechnology companies have been developing electrical and mechanical devices commercially. One such device is C-Pace, a device created by IonOptix (Westwood, MA, United States). This device offers electrical stimulation and mechanical stretch through the use of a control interface and special plates outfitted with electrodes. The control interface allows for the manipulation of various current intensity and duration along with the force of mechanical stretch. This device can not only mature hiPSC-CMs functionally, but it can also induce arrhythmias and tachycardia for disease modelling. As mentioned, electrical and mechanical stimulation is not without its drawbacks. For one, it may prove cost prohibitive for many research groups. In addition, throughput is reduced as cells must be subjected to electrical pacing and/or mechanical stimulation for a certain period of time using specialized plates. However, these approaches seem to be important for the maturation of hiPSC-CMs and should be considered when developing a maturation protocol. The mechanism of hiPSC-CM maturation through the addition of mechanical and electrical cues is yet to be completely understood. However, it is hypothesized that conditional cues may upregulate the expression of key genes involved in establishing proper cardiomyocyte structure and contractility. For example, expression of calcium handling genes *SERCA2* and *RYR2* is increased following administration of static stress^[40].

3D APPROACHES

Recently, 3D cardiomyocyte cultures, also known as organoids, have garnered great interest (Figure 3). The use of a multicellular 3D cultures potentially allow for higher accuracy in disease modelling and drug testing as 3D cardiomyocyte aggregates are closer to *in vivo* morphology^[2,20,22]. Despite this, there have been significant challenges in developing 3D model systems. Some of these challenges include maintaining highly pure cardiomyocyte populations along with regulating clump/cluster size and providing adequate oxygen and nutrients. However, 3D culture also seems to improve the maturation state of hiPSC-CMs. In a recent study, 3D hiPSC-CMs had their transcriptome and metabolic status analysed^[46]. The authors showed how 3D culture furthered the metabolic maturation of these cells and resulted in lower flux through glycolysis and increased oxidative phosphorylation^[46]. Another study by the Radisic lab in Toronto described the development of a novel platform to mature hiPSC-CMs^[47]. Through their Biowire device, the researchers were able to cultivate hiPSC-CMs in three dimensions. Differentiated hiPSC-CMs were seeded onto a wire substrate containing a template polydimethylsiloxane channel and collagen gels. After a week post-seeding, they noticed spontaneous contractions. They then exposed multiple cardiac wires to electrical stimuli and stimulated cells displayed improved calcium handling properties, increased myofibril organization, and higher conduction velocity^[47]. Their results indicated the potential importance of an electrical stimulus combined with a 3D arrangement of hiPSC-CMs to induce maturation. In another study, a tissue-engineered cardiac patch was used to promote the maturation of hiPSC-CMs^[48]. Differentiated cardiomyocytes became aligned through the use of passive tension and displayed higher conduction velocity and increased sarcomere length. Expression of various contractile genes such as *SERCA2* and *CASQ2* were also visibly increased^[48]. Other 3D cardiomyocyte studies have displayed similar results^[49,50]. These studies suggest a role for 3D culture in maturing hiPSC-CMs into adult-like states and improving disease models. 3D culture of hiPSC-CMs may be furthering maturation through provision of an environment closer to *in vivo* heart development. Culturing these cells in organoid formations could improve cell-cell contact and increase expression of various genes expressed in mature cardiomyocytes although the exact mechanism of maturation is yet to be elucidated. While promising, 3D hiPSC-CM models display some key disadvantages in disease modelling. First, many disease models require the use of single-cells to characterize disease phenotypes. Efficient dissociation and re-plating of 3D hiPSC-CMs is a known problem as many cells do not survive post-dissociation. This also poses a problem for potential clinical applications as typically, protocols involve the use of single cardiomyocytes for injection into a recipient animal myocardium^[14,15]. Second, unless organoid cell numbers and aggregate size are not carefully optimized, drug testing may be inaccurate as organoids may not be exposed to the same dose of drugs. Further, routine cell sorting may be required to ensure the cellular homogeneity of cultured organoids. The recent development of tissue-culture plates such as

AggreWell (STEMCELL Technologies), and cardiomyocyte recovery/dissociation medium (STEMCELL Technologies) may prove useful in regulating cardiac organoid cell size and optimizing cell recovery; however, further research in this area must be done to definitively address these concerns.

CONCLUSION

Current protocols for the derivation of cardiomyocytes from iPSCs are highly efficient; however, hiPSC-CM culture conditions have not been adequately understood. Addition of various cytokines, environmental cues, and mechanical/electrical stimulation have yet to be optimized. As a result, current protocols result in cardiomyocytes that are most consistent in their properties with fetal cells which potentially limits their use for disease modelling and clinical translation of adult diseases. This review outlined several strategies for the maturation of hiPSC-CMs. The combination of several of these approaches may lead to the optimal maturation conditions.

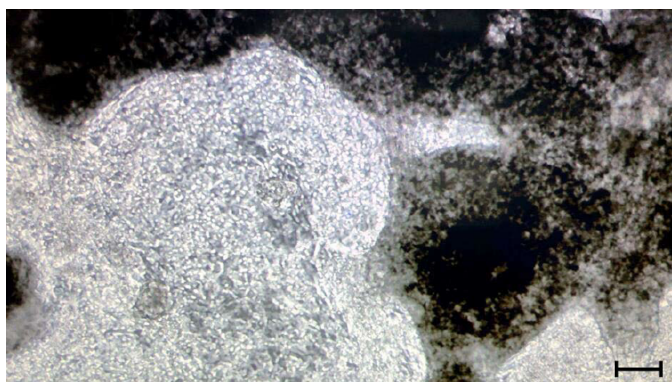


Figure 3 Induced pluripotent stem cell-derived cardiomyocytes in a 3-dimensional structure. Phase contrast image of a 3D formation of induced pluripotent stem cell-derived cardiomyocytes. Control hiPSCs were differentiated into hiPSC-CMs using STEMCELL Technologies cardiomyocyte differentiation kit. Image was taken at day 14 of differentiation. Scale bar indicates 40 μ m.

REFERENCES

- 1 **Takahashi K**, Tanabe K, Ohnuki M, Narita M, Ichisaka T, Tomoda K, Yamanaka S. Induction of pluripotent stem cells from adult human fibroblasts by defined factors. *Cell* 2007; **131**: 861-872 [PMID: 18035408 DOI: 10.1016/j.cell.2007.11.019]
- 2 **Karakikes I**, Ameen M, Termglinchan V, Wu JC. Human induced pluripotent stem cell-derived cardiomyocytes: insights into molecular, cellular, and functional phenotypes. *Circ Res* 2015; **117**: 80-88 [PMID: 26089365 DOI: 10.1161/CIRCRESAHA.117.305365]
- 3 **Hannan NR**, Segeritz CP, Touboul T, Vallier L. Production of hepatocyte-like cells from human pluripotent stem cells. *Nat Protoc* 2013; **8**: 430-437 [PMID: 23424751 DOI: 10.1016/j.bbrc.2018.01.186]
- 4 **Lian X**, Zhang J, Azarin SM, Zhu K, Hazeltine LB, Bao X, Hsiao C, Kamp TJ, Palecek SP. Directed cardiomyocyte differentiation from human pluripotent stem cells by modulating Wnt/ β -catenin signaling under fully defined conditions. *Nat Protoc* 2013; **8**: 162-175 [PMID: 23257984 DOI: 10.1038/nprot.2012.150]
- 5 **Burridge PW**, Matsa E, Shukla P, Lin ZC, Churko JM, Ebert AD, Lan F, Diecke S, Huber B, Mordwinkin NM, Plews JR, Abilez OJ, Cui B, Gold JD, Wu JC. Chemically defined generation of human cardiomyocytes. *Nat Methods* 2014; **11**: 855-860 [PMID: 24930130 DOI: 10.1038/nmeth.2999]
- 6 **Denham M**, Dottori M. Neural differentiation of induced pluripotent stem cells. *Methods Mol Biol* 2011; **793**: 99-110 [PMID: 21913096 DOI: 10.1007/978-1-61779-328-8_7]
- 7 **D'Aiuto L**, Zhi Y, Kumar Das D, Wilcox MR, Johnson JW, McClain L, MacDonald ML, Di Maio R, Schurdak ME, Piazza P, Viggiano L, Sweet R, Kinchington PR, Bhattacharjee AG, Yolken R, Nimgaonkar VL. Large-scale generation of human iPSC-derived neural stem cells/early neural progenitor cells and their neuronal differentiation. *Organogenesis* 2014; **10**: 365-377 [PMID: 25629202 DOI: 10.1080/15476278.2015.1011921]
- 8 **Taura D**, Noguchi M, Sone M, Hosoda K, Mori E, Okada Y, Takahashi K, Homma K, Oyamada N, Inuzuka M, Sonoyama T, Ebihara K, Tamura N, Itoh H, Suemori H, Nakatsuji N, Okano H, Yamanaka S, Nakao K. Adipogenic differentiation of human induced pluripotent stem cells: comparison with that of human embryonic stem cells. *FEBS Lett* 2009; **583**: 1029-1033 [PMID: 19250937 DOI: 10.1016/j.febslet.2009.02.031]
- 9 **Hamazaki T**, El Rouby N, Fredette NC, Santostefano KE, Terada N. Concise Review: Induced Pluripotent Stem Cell Research in the Era of Precision Medicine. *Stem Cells* 2017; **35**: 545-550 [PMID: 28100040 DOI: 10.1002/stem.2570]
- 10 **Pagidipati NJ**, Gaziano TA. Estimating deaths from cardiovascular disease: a review of global methodologies of mortality measurement. *Circulation* 2013; **127**: 749-756 [PMID: 23401116 DOI: 10.1161/CIRCULATIONAHA.112.128413]
- 11 **Wang G**, McCain ML, Yang L, He A, Pasqualini FS, Agarwal A, Yuan H, Jiang D, Zhang D, Zangi L, Geva J, Roberts AE, Ma Q, Ding J, Chen J, Wang DZ, Li K, Wang J, Wanders RJ, Kulik W, Vaz FM, Laflamme MA, Murry CE, Chien KR, Kelley RI, Church GM, Parker KK, Pu WT. Modeling the mitochondrial cardiomyopathy of Barth syndrome with induced pluripotent stem cell and heart-on-chip technologies. *Nat Med* 2014; **20**: 616-623 [PMID: 24813252 DOI: 10.1038/nm.3545]
- 12 **El-Hattab AW**, Scaglia F. Mitochondrial Cardiomyopathies. *Front Cardiovasc Med* 2016; **3**: 25 [PMID: 27504452 DOI: 10.3389/fcvm.2016.00025]
- 13 **Matsa E**, Burridge PW, Wu JC. Human stem cells for modeling heart disease and for drug discovery. *Sci Transl Med* 2014; **6**: 239ps6 [PMID: 24898747 DOI: 10.1126/scitranslmed.3008921]
- 14 **Rojas SV**, Kensah G, Rotaermel A, Baraki H, Kutschka I, Zweigerdt R, Martin U, Haverich A, Gruh I, Martens A. Transplantation of purified iPSC-derived cardiomyocytes in myocardial infarction. *PLoS One* 2017; **12**: e0173222 [PMID: 28493867 DOI: 10.1371/journal.pone.0173222]
- 15 **Chong JJ**, Yang X, Don CW, Minami E, Liu YW, Weyers JJ, Mahoney WM, Van Biber B, Cook SM, Palpant NJ, Gantz JA, Fugate JA, Muskheili V, Gough GM, Vogel KW, Astley CA, Hotchkiss CE, Baldessari A, Pabon L, Reinecke H, Gill EA, Nelson V, Kiem HP, Laflamme MA, Murry CE. Human embryonic-stem-cell-derived cardiomyocytes regenerate non-human primate hearts. *Nature* 2014; **510**: 273-277 [PMID: 24776797 DOI: 10.1038/nature13233]
- 16 **Shiba Y**, Fernandes S, Zhu WZ, Filice D, Muskheili V, Kim J, Palpant NJ, Gantz J, Moyes KW, Reinecke H, Van Biber B, Dardas T, Mignone JL, Izawa A, Hanna R, Viswanathan M, Gold JD, Kotlikoff MI, Sarvazyan N, Kay MW, Murry CE, Laflamme MA. Human ES-cell-derived cardiomyocytes electrically couple and suppress arrhythmias in injured hearts. *Nature* 2012; **489**: 322-325 [PMID: 22864415 DOI: 10.1038/nature11323]

- 10.1038/nature11317]
- 17 **Kawamura M**, Miyagawa S, Fukushima S, Saito A, Miki K, Ito E, Sougawa N, Kawamura T, Daimon T, Shimizu T, Okano T, Toda K, Sawa Y. Enhanced survival of transplanted human induced pluripotent stem cell-derived cardiomyocytes by the combination of cell sheets with the pedicled omental flap technique in a porcine heart. *Circulation* 2013; **128**: S87-S94 [PMID: [24030425](#) DOI: [10.1161/CIRCULATIONAHA.112.000366](#)]
- 18 **Kattman SJ**, Witty AD, Gagliardi M, Dubois NC, Niapour M, Hotta A, Ellis J, Keller G. Stage-specific optimization of activin/nodal and BMP signaling promotes cardiac differentiation of mouse and human pluripotent stem cell lines. *Cell Stem Cell* 2011; **8**: 228-240 [PMID: [21295278](#) DOI: [10.1016/j.stem.2010.12.008](#)]
- 19 **Tohyama S**, Hattori F, Sano M, Hishiki T, Nagahata Y, Matsuura T, Hashimoto H, Suzuki T, Yamashita H, Satoh Y, Egashira T, Seki T, Muraoka N, Yamakawa H, Ohgino Y, Tanaka T, Yoichi M, Yuasa S, Murata M, Suematsu M, Fukuda K. Distinct metabolic flow enables large-scale purification of mouse and human pluripotent stem cell-derived cardiomyocytes. *Cell Stem Cell* 2013; **12**: 127-137 [PMID: [23168164](#) DOI: [10.1016/j.stem.2012.09.013](#)]
- 20 **Tu C**, Chao BS, Wu JC. Strategies for Improving the Maturity of Human Induced Pluripotent Stem Cell-Derived Cardiomyocytes. *Circ Res* 2018; **123**: 512-514 [PMID: [30355143](#) DOI: [10.1161/CIRCRESAHA.118.313472](#)]
- 21 **Goversen B**, van der Heyden MAG, van Veen TAB, de Boer TP. The immature electrophysiological phenotype of iPSC-CMs still hampers in vitro drug screening: Special focus on IK1. *Pharmacol Ther* 2018; **183**: 127-136 [PMID: [28986101](#) DOI: [10.1016/j.pharmthera.2017.10.001](#)]
- 22 **Denning C**, Borgdorff V, Crutchley J, Firth KS, George V, Kalra S, Kondrashov A, Hoang MD, Mosqueira D, Patel A, Prodanov L, Rajamohan D, Skarnes WC, Smith JG, Young LE. Cardiomyocytes from human pluripotent stem cells: From laboratory curiosity to industrial biomedical platform. *Biochim Biophys Acta* 2016; **1863**: 1728-1748 [PMID: [26524115](#) DOI: [10.1016/j.bbamcr.2015.10.014](#)]
- 23 **Kamakura T**, Makiyama T, Sasaki K, Yoshida Y, Wuriyanghai Y, Chen J, Hattori T, Ohno S, Kita T, Horie M, Yamanaka S, Kimura T. Ultrastructural maturation of human-induced pluripotent stem cell-derived cardiomyocytes in a long-term culture. *Circ J* 2013; **77**: 1307-1314 [PMID: [23400258](#) DOI: [10.1253/circj.CJ-12-0987](#)]
- 24 **Lundy SD**, Zhu WZ, Regnier M, Laflamme MA. Structural and functional maturation of cardiomyocytes derived from human pluripotent stem cells. *Stem Cells Dev* 2013; **22**: 1991-2002 [PMID: [23461462](#) DOI: [10.1089/scd.2012.0490](#)]
- 25 **Bassat E**, Mutlak YE, Genzelinakh A, Shadrin IY, Baruch Umansky K, Yifa O, Kain D, Rajchman D, Leach J, Riabov Bassat D, Udi Y, Sarig R, Sagi I, Martin JF, Bursac N, Cohen S, Tzahor E. The extracellular matrix protein agrin promotes heart regeneration in mice. *Nature* 2017; **547**: 179-184 [PMID: [28581497](#) DOI: [10.1038/nature22978](#)]
- 26 **van den Berg CW**, Okawa S, Chuva de Sousa Lopes SM, van Iperen L, Passier R, Braam SR, Tertoolen LG, del Sol A, Davis RP, Mummery CL. Transcriptome of human foetal heart compared with cardiomyocytes from pluripotent stem cells. *Development* 2015; **142**: 3231-3238 [PMID: [26209647](#) DOI: [10.1242/dev.123810](#)]
- 27 **Zhou Y**, Wang L, Liu Z, Alimohamadi S, Yin C, Liu J, Qian L. Comparative Gene Expression Analyses Reveal Distinct Molecular Signatures between Differentially Reprogrammed Cardiomyocytes. *Cell Rep* 2017; **20**: 3014-3024 [PMID: [28954220](#) DOI: [10.1016/j.celrep.2017.09.005](#)]
- 28 **Al-Qusairi L**, Weiss N, Toussaint A, Berbey C, Messaddeq N, Kretz C, Sanoudou D, Beggs AH, Allard B, Mandel JL, Laporte J, Jacquemond V, Buj-Bello A. T-tubule disorganization and defective excitation-contraction coupling in muscle fibers lacking myotubularin lipid phosphatase. *Proc Natl Acad Sci U S A* 2009; **106**: 18763-18768 [PMID: [19846786](#) DOI: [10.1073/pnas.0900705106](#)]
- 29 **Balijepalli RC**, Lokuta AJ, Maertz NA, Buck JM, Haworth RA, Valdivia HH, Kamp TJ. Depletion of T-tubules and specific subcellular changes in sarcolemmal proteins in tachycardia-induced heart failure. *Cardiovasc Res* 2003; **59**: 67-77 [PMID: [12829177](#) DOI: [10.1016/S0008-6363\(03\)00325-0](#)]
- 30 **Yang X**, Rodriguez M, Pabon L, Fischer KA, Reinecke H, Regnier M, Sniadecki NJ, Ruohola-Baker H, Murry CE. Tri-iodo-L-thyronine promotes the maturation of human cardiomyocytes-derived from induced pluripotent stem cells. *J Mol Cell Cardiol* 2014; **72**: 296-304 [PMID: [24735830](#) DOI: [10.1016/j.yjmcc.2014.04.005](#)]
- 31 **Parikh SS**, Blackwell DJ, Gomez-Hurtado N, Frisk M, Wang L, Kim K, Dahl CP, Fiane A, Tønnessen T, Kryshnal DO, Louch WE, Knollmann BC. Thyroid and Glucocorticoid Hormones Promote Functional T-Tubule Development in Human-Induced Pluripotent Stem Cell-Derived Cardiomyocytes. *Circ Res* 2017; **121**: 1323-1330 [PMID: [28974554](#) DOI: [10.1161/CIRCRESAHA.117.311920](#)]
- 32 **Drawnel FM**, Boccardo S, Prummer M, Delobel F, Graff A, Weber M, Gérard R, Badi L, Kam-Thong T, Bu L, Jiang X, Hoflack JC, Kiialainen A, Jeworutzki E, Aoyama N, Carlson C, Burcin M, Gromo G, Boehringer M, Stahlberg H, Hall BJ, Magnone MC, Kolaja K, Chien KR, Bailly J, Iacone R. Disease modeling and phenotypic drug screening for diabetic cardiomyopathy using human induced pluripotent stem cells. *Cell Rep* 2014; **9**: 810-821 [PMID: [25437537](#) DOI: [10.1016/j.celrep.2014.09.055](#)]
- 33 **Correia C**, Koshkin A, Duarte P, Hu D, Teixeira A, Domian I, Serra M, Alves PM. Distinct carbon sources affect structural and functional maturation of cardiomyocytes derived from human pluripotent stem cells. *Sci Rep* 2017; **7**: 8590 [PMID: [28819274](#) DOI: [10.1038/s41598-017-08713-4](#)]
- 34 **Yoshida S**, Miyagawa S, Fukushima S, Kawamura T, Kashiya N, Ohashi F, Toyofuku T, Toda K, Sawa Y. Maturation of Human Induced Pluripotent Stem Cell-Derived Cardiomyocytes by Soluble Factors from Human Mesenchymal Stem Cells. *Mol Ther* 2018; **26**: 2681-2695 [PMID: [30217728](#) DOI: [10.1016/j.ymthe.2018.08.012](#)]
- 35 **Brundel BJ**, Henning RH, Ke L, van Gelder IC, Crijns HJ, Kampinga HH. Heat shock protein upregulation protects against pacing-induced myolysis in HL-1 atrial myocytes and in human atrial fibrillation. *J Mol Cell Cardiol* 2006; **41**: 555-562 [PMID: [16876820](#) DOI: [10.1016/j.yjmcc.2006.06.068](#)]
- 36 **Qi XY**, Yeh YH, Xiao L, Burstein B, Maguy A, Chartier D, Villeneuve LR, Brundel BJ, Dobrev D, Nattel S. Cellular signaling underlying atrial tachycardia remodeling of L-type calcium current. *Circ Res* 2008; **103**: 845-854 [PMID: [18723446](#) DOI: [10.1161/CIRCRESAHA.108.175463](#)]
- 37 **Jaleel N**, Nakayama H, Chen X, Kubo H, MacDonnell S, Zhang H, Berretta R, Robbins J, Cribbs L, Molkenit JD, Houser SR. Ca²⁺ influx through T- and L-type Ca²⁺ channels have different effects on myocyte contractility and induce unique cardiac phenotypes. *Circ Res* 2008; **103**: 1109-1119 [PMID: [18832749](#) DOI: [10.1161/CIRCRESAHA.108.185611](#)]
- 38 **Bodi I**, Mikala G, Koch SE, Akhter SA, Schwartz A. The L-type calcium channel in the heart: the beat

- goes on. *J Clin Invest* 2005; **115**: 3306-3317 [PMID: [16322774](#) DOI: [10.1172/JCI27167](#)]
- 39 **Mukherjee R**, Hewett KW, Walker JD, Basler CG, Spinale FG. Changes in L-type calcium channel abundance and function during the transition to pacing-induced congestive heart failure. *Cardiovasc Res* 1998; **37**: 432-444 [PMID: [9614498](#) DOI: [10.1016/S0008-6363\(97\)00128-4](#)]
- 40 **Ruan JL**, Tulloch NL, Razumova MV, Saiget M, Muskheili V, Pabon L, Reinecke H, Regnier M, Murry CE. Mechanical Stress Conditioning and Electrical Stimulation Promote Contractility and Force Maturation of Induced Pluripotent Stem Cell-Derived Human Cardiac Tissue. *Circulation* 2016; **134**: 1557-1567 [PMID: [27737958](#) DOI: [10.1161/CIRCULATIONAHA.114.014998](#)]
- 41 **Abilez OJ**, Tzatzalos E, Yang H, Zhao MT, Jung G, Zöllner AM, Tiburcy M, Riegler J, Matsa E, Shukla P, Zhuge Y, Chour T, Chen VC, Burrige PW, Karakikes I, Kuhl E, Bernstein D, Couture LA, Gold JD, Zimmermann WH, Wu JC. Passive Stretch Induces Structural and Functional Maturation of Engineered Heart Muscle as Predicted by Computational Modeling. *Stem Cells* 2018; **36**: 265-277 [PMID: [29086457](#) DOI: [10.1002/stem.2732](#)]
- 42 **Rodriguez AG**, Han SJ, Regnier M, Sniadecki NJ. Substrate stiffness increases twitch power of neonatal cardiomyocytes in correlation with changes in myofibril structure and intracellular calcium. *Biophys J* 2011; **101**: 2455-2464 [PMID: [22098744](#) DOI: [10.1016/j.bpj.2011.09.057](#)]
- 43 **Jacot JG**, McCulloch AD, Omens JH. Substrate stiffness affects the functional maturation of neonatal rat ventricular myocytes. *Biophys J* 2008; **95**: 3479-3487 [PMID: [18586852](#) DOI: [10.1529/biophysj.107.124545](#)]
- 44 **Ronaldson-Bouchard K**, Ma SP, Yeager K, Chen T, Song L, Sirabella D, Morikawa K, Teles D, Yazawa M, Vunjak-Novakovic G. Advanced maturation of human cardiac tissue grown from pluripotent stem cells. *Nature* 2018; **556**: 239-243 [PMID: [29618819](#) DOI: [10.1038/s41586-018-0016-3](#)]
- 45 **Cui Z**, Ni NC, Wu J, Du GQ, He S, Yau TM, Weisel RD, Sung HW, Li RK. Polypyrrole-chitosan conductive biomaterial synchronizes cardiomyocyte contraction and improves myocardial electrical impulse propagation. *Theranostics* 2018; **8**: 2752-2764 [PMID: [29774073](#) DOI: [10.7150/thno.22599](#)]
- 46 **Correia C**, Koshkin A, Duarte P, Hu D, Carido M, Sebastião MJ, Gomes-Alves P, Elliott DA, Domian JJ, Teixeira AP, Alves PM, Serra M. 3D aggregate culture improves metabolic maturation of human pluripotent stem cell derived cardiomyocytes. *Biotechnol Bioeng* 2018; **115**: 630-644 [PMID: [29178315](#) DOI: [10.1002/bit.26504](#)]
- 47 **Nunes SS**, Miklas JW, Liu J, Aschar-Sobbi R, Xiao Y, Zhang B, Jiang J, Massé S, Gagliardi M, Hsieh A, Thavandiran N, Laflamme MA, Nanthakumar K, Gross GJ, Backx PH, Keller G, Radisic M. Biowire: a platform for maturation of human pluripotent stem cell-derived cardiomyocytes. *Nat Methods* 2013; **10**: 781-787 [PMID: [23793239](#) DOI: [10.1038/nmeth.2524](#)]
- 48 **Zhang D**, Shadrin IY, Lam J, Xian HQ, Snodgrass HR, Bursac N. Tissue-engineered cardiac patch for advanced functional maturation of human ESC-derived cardiomyocytes. *Biomaterials* 2013; **34**: 5813-5820 [PMID: [23642535](#) DOI: [10.1016/j.biomaterials.2013.04.026](#)]
- 49 **Ulmer BM**, Stoeck A, Schulze ML, Patel S, Gucsek M, Mannhardt I, Funcke S, Murphy E, Eschenhagen T, Hansen A. Contractile Work Contributes to Maturation of Energy Metabolism in hiPSC-Derived Cardiomyocytes. *Stem Cell Reports* 2018; **10**: 834-847 [PMID: [29503093](#) DOI: [10.1016/j.stemcr.2018.01.039](#)]
- 50 **Lemoine MD**, Mannhardt I, Breckwoldt K, Prondzynski M, Flenner F, Ulmer B, Hirt MN, Neuber C, Horváth A, Kloth B, Reichenspurner H, Willems S, Hansen A, Eschenhagen T, Christ T. Human iPSC-derived cardiomyocytes cultured in 3D engineered heart tissue show physiological upstroke velocity and sodium current density. *Sci Rep* 2017; **7**: 5464 [PMID: [28710467](#) DOI: [10.1038/s41598-017-05600-w](#)]

P- Reviewer: Kiselev SL, Liu L, Saeki K, Tanabe S

S- Editor: Ma YJ **L- Editor:** A **E- Editor:** Tan WW





Published By Baishideng Publishing Group Inc
7901 Stoneridge Drive, Suite 501, Pleasanton, CA 94588, USA
Telephone: +1-925-2238242
Fax: +1-925-2238243
E-mail: bpgoffice@wjgnet.com
Help Desk: <https://www.f6publishing.com/helpdesk>
<https://www.wjgnet.com>

