

Match Overview

1 Internet 55 words
crawled on 11-Jun-2017
www.wjgnet.com

35%

Name of Journal: *World Journal of Gastroenterology*

Manuscript NO: 45109

Manuscript Type: RETRACTION NOTE

Retraction note to: ¹Construction of Gpm6a/ReelinGFPCreERT2 by BAC recombination using a specific gene in hepatic mesothelial or stellate cells

Shi HB *et al.* Retraction note

Abstract

We have decided to retract the above article for further consideration, due to some communication misunderstanding.

Key words: Retraction note

RETRACTION NOTE

Retraction Note to: ¹Shi HB, Lou JL, Shi HL, Ren F, Chen Y, Duan ZP. Construction of Gpm6a/ReelinGFPCreERT2 by BAC recombination using a specific gene in hepatic mesothelial or stellate cells. *World J Gastroenterol* 2017; 23(2): 224-231. PMID: 28127196 DOI: 10.3748/wjg.v23.i2.224. The online version of the original article can be found at <https://www.wjgnet.com/1007-9327/full/v23/i2/224.htm>.

After all the authors' discussion and agreement, we have decided to retract the above article^[1] for further consideration, due to some communication misunderstanding.

[全部](#)[图片](#)[新闻](#)[视频](#)[购物](#)[更多](#)[设置](#)[工具](#)

找到约 3 条结果 (用时 0.55 秒)

Construction of Gpm6a/ReelinGFPCreERT2 by BAC recombination ...

<https://www.ncbi.nlm.nih.gov/pmc/articles/PMC5236502/> ▾ 翻译此页作者: HB Shi - 2017 - [相关文章](#)

2017年1月14日 - **Construction of Gpm6a/Reelin^{GFPCreERT2} by BAC recombination using a specific gene in hepatic mesothelial or stellate cells** ... Author information Article notes Copyright and License information Disclaimer ... **Specific genes** have been identified in **hepatic mesothelial** cells and HSCs by microarray[7,8].

缺少字词: retraction

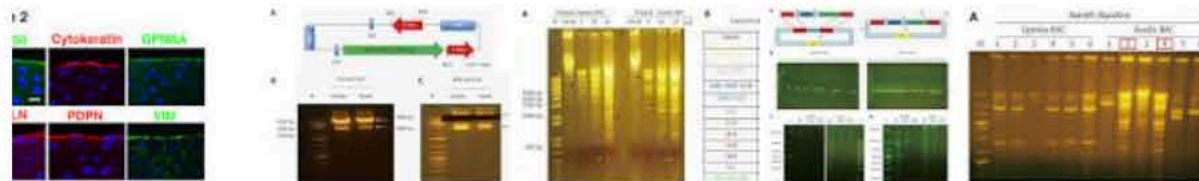
Differentiation of MCs in liver development and fibrosis. (A) During ...

<https://www.researchgate.net/.../Differentiation-of-MCs-in-liver-development...> - 翻译此页

Cell-lineage tracing of Wt1+ cells demonstrates their migration **from** the **liver** surface and differentiation into ... **Construction of Gpm6a/Reelin GFPCreERT2 by BAC recombination using a specific gene in hepatic mesothelial or stellate cells.**

缺少字词: retraction note reelingfpcreert2

Retraction note of Construction of Gpm6a ...的图片搜索结果



有关“Retraction note of Construction of Gpm6a/ReelinGFPCreERT2 by BAC recombination using a specific gene in hepatic mesothelial or stellate cells”的更多 [举报图片](#) 图片

Chen Yu - publications and coauthors - SciCurve

<https://scicurve.com/author/Chen%20Yu> ▾ 翻译此页

"Schisandrin B protects human keratinocyte-derived HaCaT cells **from** tert-butyl Device in Cervical and Thoracic Laminectomy: a Retrospective Comparative Study and Technical **Note**

[全部](#)[图片](#)[新闻](#)[视频](#)[购物](#)[更多](#)[设置](#)[工具](#)

找到约 3 条结果 (用时 0.50 秒)

Construction of Gpm6a/ReelinGFPCreERT2 by BAC recombination ...

europepmc.org/abstract/med/28127196 ▼ [翻译此页](#)

作者: HB Shi - 2017 - [相关文章](#)

Abstract: To prepare a **Gpm6a/ReelinGFPCreERT2 construct with** a rapid and ... **BAC recombination using a specific gene** in **hepatic mesothelial** or **stellate cells**.

缺少字词: Retraction note

Construction of Gpm6a/ReelinGFPCreERT2 by BAC recombination ...

<https://www.ncbi.nlm.nih.gov/pmc/articles/PMC5236502/> ▼ [翻译此页](#)

作者: HB Shi - 2017 - [相关文章](#)

2017年1月14日 - You may **notice** problems **with** the display of **certain** parts of an article in other ... **Construction of Gpm6a/Reelin^{GFPCreERT2} by BAC recombination using a specific gene** in **hepatic mesothelial** or **stellate cells** ... **Specific genes** have been identified in **hepatic mesothelial** cells and HSCs by microarray[7,8].

缺少字词: Retraction

Expression of markers in liver mesothelial cells (MCs).... | Download ...

<https://www.researchgate.net/.../Expression-of-markers-in-liver-mesothelial-c...> - [翻译此页](#)

Immunohistochemistry shows expression of CD200, cytokeratin, GPM6A, MSLN, ... Scale bar: 10 μm. **from** publication: The Role of **Mesothelial** Cells in **Liver** ... by **BAC recombination using a specific gene** in **hepatic mesothelial** or **stellate cells** ... AIM To prepare a **Gpm6a/ReelinGFPCreERT2 construct with** a rapid and ...

缺少字词: Retraction note

[全部](#)[图片](#)[新闻](#)[视频](#)[购物](#)[更多](#)[设置](#)[工具](#)

找到约 4 条结果 (用时 0.50 秒)

Construction of Gpm6a/ReelinGFPCreERT2 by BAC recombination ...

europepmc.org/abstract/med/28127196 ▼ [翻译此页](#)作者: HB Shi - 2017 - [相关文章](#)

Abstract: To prepare a **Gpm6a/ReelinGFPCreERT2 construct** with a rapid and ... **BAC recombination** using a **specific gene** in **hepatic mesothelial** or **stellate cells**.

缺少字词: Retraction note

Construction of Gpm6a/ReelinGFPCreERT2 by BAC recombination ...

<https://www.ncbi.nlm.nih.gov/pmc/articles/PMC5236502/> ▼ [翻译此页](#)作者: HB Shi - 2017 - [相关文章](#)

2017年1月14日 - You may **notice** problems **with** the display of **certain** parts of an article in other ... **Construction of Gpm6a/Reelin^{GFPCreERT2} by BAC recombination using a specific gene in hepatic mesothelial or stellate cells** ... **Specific genes** have been identified in **hepatic mesothelial** cells and HSCs by microarray[7,8].

缺少字词: Retraction

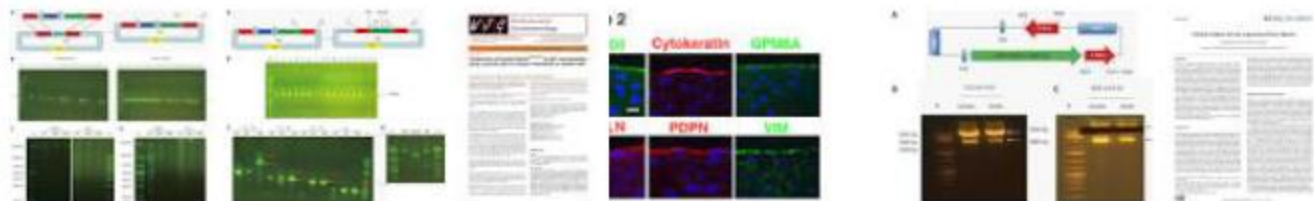
Structure of the mesothelium in mouse liver tissue. Mesothelial cells ...

<https://www.researchgate.net/.../Structure-of-the-mesothelium-in-mouse-liver...> - [翻译此页](#)

Hepatic stellate cells (HSCs) reside in the space of Disse between hepatocytes ... by **BAC recombination** using a **specific gene** in **hepatic mesothelial** or **stellate cells** ... AIM To prepare a **Gpm6a/ReelinGFPCreERT2 construct** with a rapid and ...

缺少字词: Retraction note

Retraction note to: Construction of Gpm6a ...的图片搜索结果



有关“Retraction note to: Construction of Gpm6a/ReelinGFPCreERT2 by BAC

recombination using a specific gene in hepatic mesothelial or stellate cells”的更多图 [举报图片](#)

片