

World Journal of *Gastroenterology*

World J Gastroenterol 2019 April 28; 25(16): 1907-2018



**OPINION REVIEW**

- 1907** Development of *Helicobacter pylori* treatment: How do we manage antimicrobial resistance?
Suzuki S, Esaki M, Kusano C, Ikehara H, Gotoda T

REVIEW

- 1913** Organoids of liver diseases: From bench to bedside
Wu LJ, Chen ZY, Wang Y, Zhao JG, Xie XZ, Chen G

MINIREVIEWS

- 1928** Upper gastrointestinal tract involvement of pediatric inflammatory bowel disease: A pathological review
Abuquteish D, Putra J

ORIGINAL ARTICLE**Basic Study**

- 1936** Signal transducer and activator of transcription 3 promotes the Warburg effect possibly by inducing pyruvate kinase M2 phosphorylation in liver precancerous lesions
Bi YH, Han WQ, Li RF, Wang YJ, Du ZS, Wang XJ, Jiang Y
- 1950** Immune response pattern varies with the natural history of chronic hepatitis B
Wang WT, Zhao XQ, Li GP, Chen YZ, Wang L, Han MF, Li WN, Chen T, Chen G, Xu D, Ning Q, Zhao XP
- 1964** Role and mechanism of circ-PRKCI in hepatocellular carcinoma
Qi SX, Sun H, Liu H, Yu J, Jiang ZY, Yan P

Retrospective Study

- 1975** Comparison of decompression tubes with metallic stents for the management of right-sided malignant colonic obstruction
Suzuki Y, Moritani K, Seo Y, Takahashi T
- 1986** Dual energy computed tomography for detection of metastatic lymph nodes in patients with hepatocellular carcinoma
Zeng YR, Yang QH, Liu QY, Min J, Li HG, Liu ZF, Li JX

Observational Study

- 1997** Assessment of chronic radiation proctopathy and radiofrequency ablation treatment follow-up with optical coherence tomography angiography: A pilot study
Ahsen OO, Liang K, Lee HC, Wang Z, Fujimoto JG, Mashimo H

CASE REPORT

- 2010** Intra-abdominal desmoid tumors mimicking gastrointestinal stromal tumors — 8 cases: A case report
Kim JH, Ryu MH, Park YS, Kim HJ, Park H, Kang YK

ABOUT COVER

Editorial board member of *World Journal of Gastroenterology*, Gwang Ha Ha Kim, MD, PhD, Full Professor, Department of Internal Medicine, Pusan National University School of Medicine, Busan 49241, South Korea

AIMS AND SCOPE

World Journal of Gastroenterology (*World J Gastroenterol*, *WJG*, print ISSN 1007-9327, online ISSN 2219-2840, DOI: 10.3748) is a peer-reviewed open access journal. The *WJG* Editorial Board consists of 642 experts in gastroenterology and hepatology from 59 countries.

The primary task of *WJG* is to rapidly publish high-quality original articles, reviews, and commentaries in the fields of gastroenterology, hepatology, gastrointestinal endoscopy, gastrointestinal surgery, hepatobiliary surgery, gastrointestinal oncology, gastrointestinal radiation oncology, etc. The *WJG* is dedicated to become an influential and prestigious journal in gastroenterology and hepatology, to promote the development of above disciplines, and to improve the diagnostic and therapeutic skill and expertise of clinicians.

INDEXING/ABSTRACTING

The *WJG* is now indexed in Current Contents®/Clinical Medicine, Science Citation Index Expanded (also known as SciSearch®), Journal Citation Reports®, Index Medicus, MEDLINE, PubMed, PubMed Central, Scopus and Directory of Open Access Journals. The 2018 edition of Journal Citation Report® cites the 2017 impact factor for *WJG* as 3.300 (5-year impact factor: 3.387), ranking *WJG* as 35th among 80 journals in gastroenterology and hepatology (quartile in category Q2).

RESPONSIBLE EDITORS
FOR THIS ISSUE

Responsible Electronic Editor: Han Song

Proofing Editorial Office Director: Ze-Mao Gong

NAME OF JOURNAL

World Journal of Gastroenterology

ISSN

ISSN 1007-9327 (print) ISSN 2219-2840 (online)

LAUNCH DATE

October 1, 1995

FREQUENCY

Weekly

EDITORS-IN-CHIEF

Subrata Ghosh, Andrzej S Tarnawski

EDITORIAL BOARD MEMBERS

<http://www.wjgnet.com/1007-9327/editorialboard.htm>

EDITORIAL OFFICE

Ze-Mao Gong, Director

PUBLICATION DATE

April 28, 2019

COPYRIGHT

© 2019 Baishideng Publishing Group Inc

INSTRUCTIONS TO AUTHORS

<https://www.wjgnet.com/bpg/gerinfo/204>

GUIDELINES FOR ETHICS DOCUMENTS

<https://www.wjgnet.com/bpg/GerInfo/287>

GUIDELINES FOR NON-NATIVE SPEAKERS OF ENGLISH

<https://www.wjgnet.com/bpg/gerinfo/240>

PUBLICATION MISCONDUCT

<https://www.wjgnet.com/bpg/gerinfo/208>

ARTICLE PROCESSING CHARGE

<https://www.wjgnet.com/bpg/gerinfo/242>

STEPS FOR SUBMITTING MANUSCRIPTS

<https://www.wjgnet.com/bpg/GerInfo/239>

ONLINE SUBMISSION

<https://www.f6publishing.com>



Upper gastrointestinal tract involvement of pediatric inflammatory bowel disease: A pathological review

Dua Abuquteish, Juan Putra

ORCID number: Dua Abuquteish (0000-0001-7269-7853); Juan Putra (0000-0002-3487-4641).

Author contributions: Abuquteish D reviewed the literature and drafted the manuscript; Putra J provided overall intellectual input, reviewed the literature, acquired the histological images, and edited the final version of the manuscript; all authors approved the final version to be published.

Conflict-of-interest statement: The authors have no conflicts of interest to disclose.

Open-Access: This article is an open-access article which was selected by an in-house editor and fully peer-reviewed by external reviewers. It is distributed in accordance with the Creative Commons Attribution Non Commercial (CC BY-NC 4.0) license, which permits others to distribute, remix, adapt, build upon this work non-commercially, and license their derivative works on different terms, provided the original work is properly cited and the use is non-commercial. See: <http://creativecommons.org/licenses/by-nc/4.0/>

Manuscript source: Invited manuscript

Received: March 19, 2019

Peer-review started: March 19, 2019

First decision: March 27, 2019

Revised: April 3, 2019

Accepted: April 10, 2019

Article in press: April 10, 2019

Published online: April 28, 2019

Dua Abuquteish, Juan Putra, Division of Pathology, Department of Paediatric Laboratory Medicine, Hospital for Sick Children, Toronto, ON M5G 1X8, Canada

Corresponding author: Juan Putra, MD, Staff Physician, Division of Pathology, Department of Paediatric Laboratory Medicine, Hospital for Sick Children, 555 University Ave, Toronto, ON M5G 1X8, Canada. juan.putra@sickkids.ca

Telephone: +1-416-8135966

Fax: +1-416-8135974

Abstract

Upper gastrointestinal (UGI) tract involvement of inflammatory bowel disease (IBD) is commonly seen in pediatric patients. Upper endoscopy is included in the routine workup of children with suspected IBD to enhance the diagnosis and management of these patients. Currently, childhood IBD is classified into ulcerative colitis (UC), atypical UC, Crohn's disease (CD) and IBD unclassified. Histologic confirmation of UGI tract involvement, in particular the presence of epithelioid (non-caseating) granulomas, is helpful in confirming the diagnosis of IBD and its classification. Herein, we reviewed selected IBD-associated UGI tract manifestations in children. Lymphocytic esophagitis, seen predominantly in CD, is histologically characterized by increased intraepithelial lymphocytes (> 20 in one high-power field) in a background of mucosal injury with absence of granulocytes. Focally enhanced gastritis is a form of gastric inflammation in pediatric IBD marked by a focal lymphohistiocytic pit inflammation with or without granulocytes and plasma cells in a relatively normal background gastric mucosa. Duodenal inflammation seen in children with IBD includes cryptitis, villous flattening, increased intraepithelial lymphocytes, and lamina propria eosinophilia. Finally, epithelioid granulomas not associated with ruptured gland/crypt are a diagnostic feature of CD. The clinicopathologic correlation and differential diagnosis of each microscopic finding are discussed. Clinicians and pathologists should be cognizant of the utility and limitations of these histologic features.

Key words: Pediatric; Inflammatory bowel disease; Lymphocytic esophagitis; Focally enhanced gastritis; Epithelioid granuloma; Crohn's disease; Ulcerative colitis

©The Author(s) 2019. Published by Baishideng Publishing Group Inc. All rights reserved.

Core tip: Upper gastrointestinal tract inflammation is frequently observed in pediatric patients with inflammatory bowel disease. Distinct inflammatory patterns such as

P-Reviewer: Ciccone MM, Day AS, Gheita TA, Serban ED
S-Editor: Ma RY
L-Editor: A
E-Editor: Song H



lymphocytic esophagitis and focally enhanced gastritis are helpful in rendering the diagnosis of inflammatory bowel disease in an otherwise non-specific case. Epithelioid granulomas are the only specific microscopic finding to distinguish Crohn disease from ulcerative colitis. Meanwhile, duodenal inflammation demonstrates various non-specific histologic findings in the setting of pediatric inflammatory bowel disease. This review highlights the diagnostic criteria and differential diagnosis of each pathologic finding.

Citation: Abuquteish D, Putra J. Upper gastrointestinal tract involvement of pediatric inflammatory bowel disease: A pathological review. *World J Gastroenterol* 2019; 25(16): 1928-1935

URL: <https://www.wjgnet.com/1007-9327/full/v25/i16/1928.htm>

DOI: <https://dx.doi.org/10.3748/wjg.v25.i16.1928>

INTRODUCTION

Inflammatory bowel disease (IBD) is a complex and multifactorial disorder of the gastrointestinal tract characterized by relapsing inflammation with a peak age of onset between 15 and 30 years of age^[1]. The incidence of pediatric IBD varies based on the geographical region with the highest incidence seen in Europe (0.2-23 per 100000) and North America (1.1-15.2 per 100000)^[2]. Benchimol *et al*^[3] reported increasing prevalence of childhood-onset IBD in Canada over time. The incidence, however, is not statistically changed with an exception of the rapid increase in the youngest age group (6 mo to 5 years of age)^[3]. A population-based epidemiological study from Wisconsin^[4], United States, reported the annual incidence of IBD 9.5 per 100000 children with 19% of cases occurred in the first decade of life. The incidence of Crohn's disease (CD), ulcerative colitis (UC) and indeterminate colitis in the study was 6.6, 2.4, and 0.5 per 100000 children, respectively^[4].

Phenotype classification of IBD is necessary for accurate management and prognostication. The pediatric IBD Porto Group of the European Society of Pediatric Gastroenterology, Hepatology, and Nutrition (ESPGHAN)^[5] classifies pediatric IBD into five subgroups: UC, atypical UC, colonic CD, small bowel CD, and IBD unclassified (IBDU). The classification is based on the endoscopic and pathologic findings.

Despite many similarities between IBDs in children and adults, the pediatric-onset IBD often presents with atypical features, making the classification of IBD in children challenging. In addition, upper gastrointestinal (UGI) tract involvement is more commonly identified in pediatric patients compared to adults^[6]. Previously considered to be a specific finding of CD, UGI tract involvement is no longer used to distinguish CD from UC as it may be seen in both entities^[7]. Herein, we review the UGI tract manifestations of pediatric IBD including lymphocytic esophagitis (LE), focally enhanced gastritis (FEG), duodenal inflammation, and epithelioid granulomas with an emphasis on their pathologic characteristics and differential diagnosis. The pathologic characteristics of these entities are summarized in Table 1. Monogenic IBD, a completely separate entity characterized by its early onset and association with underlying genetic defects, is not discussed in this review.

CLINICAL PERSPECTIVE

UGI tract inflammation is noted in approximately half of the children with IBD during the initial assessment^[6,8]. Castellanea *et al*^[8] reported that the most frequently involved sites were the stomach (67%) followed by the esophagus (54%) and duodenum (22%). The clinical manifestations include epigastric and abdominal pain, nausea, vomiting, and weight loss^[8]. However, a subset of patients with UGI tract inflammation were asymptomatic at initial presentation^[8,9,10]. Therefore, ESPGHAN Revised Porto Criteria recommended that esophagogastroduodenoscopy (EGD) should be performed in all children at the initial evaluation of IBD with two or more biopsies obtained from each site irrespective of the UGI tract manifestations and endoscopic appearances^[7,11].

Routine EGD allows a comprehensive evaluation of the extent of disease involvement and is potentially helpful to classify the disease in a subset of patients with otherwise nonspecific pancolitis^[12]. The European registries (EUROKIDS and the Hungarian Paediatric IBD Registry) reported that 35%-67% of CD patients

Table 1 Upper gastrointestinal tract manifestations of childhood inflammatory bowel disease

Entity	Prevalence (%)		Histologic diagnostic criteria	Differential diagnosis
	CD	UC		
Lymphocytic esophagitis	12-28 ^[15,20]	7 ^[15,20]	> 20 IELs/HPF; No significant granulocytes; Mucosal injury (edema; dyskeratosis).	Candidiasis, lichen planus esophagitis, lichenoid esophagitis.
Focally enhanced gastritis	54-55 ^[31,32]	21-30 ^[31,32]	Focal pit injury (lymphohistiocytes ± plasma cells or granulocytes); Relatively normal background mucosa.	Lymphoid aggregate, <i>H. pylori</i> -associated gastritis.
Duodenitis	33-48 ^[13,35,36,37]	0-29 ^[13,35,36,37]	Cryptitis; Villous blunting; Increased IELs (> 20 IELs/100 enterocytes); Lamina propria eosinophilia	Celiac disease, <i>H. pylori</i> infection, nonsteroidal anti-inflammatory medications, bacterial overgrowth, autoimmune diseases
Epithelioid granulomas	2.7 (esophagus); 20.1 (stomach); 3.8 (duodenum) ^[40]	0	Collection of histiocytes; Non-caseating; Surrounded by lymphocytes; Not associated with ruptured gland/crypt	Chronic granulomatous disease, common variable immunodeficiency, and infection

CD: Crohn's disease; IEL: Intraepithelial lymphocytes; UC: Ulcerative colitis; HPF: High-power field; *H. pylori*: *Helicobacter pylori*.

demonstrated macroscopic abnormalities of the UGI tract at EGD and 9%-24% of them showed characteristic endoscopic findings of CD (aphtous lesions, ulcerations, cobblestone appearance, and stenosis)^[13,14].

Histologically, various inflammatory patterns of the UGI tract may be seen in childhood IBD. The esophageal involvement of these patients consists of active esophagitis, chronic esophagitis (including LE), and reflux esophagitis^[8,9,15]. The inflammatory patterns seen in the stomach include chronic active and inactive gastritis (including *Helicobacter pylori*-associated gastritis), chronic atrophic gastritis, and FEG^[10,16,17]. The duodenal inflammation is characterized by crypt inflammation, villous blunting, and increased intraepithelial lymphocytes^[18]. Whereas the aforementioned findings can be seen in all IBD subgroups, epithelioid (non-caseating) granulomas are a specific histologic feature to render the diagnosis CD^[5].

LE

Initially described by Rubio *et al*^[19] in 2006, LE has been associated with IBD in pediatric patients, particularly CD^[15]. The prevalence of LE in children with CD ranges from 12.2 to 28%^[15,20]. However, LE should not be used as a distinguishing feature between CD and UC, as a small proportion (7%) of children with UC also demonstrate LE^[15]. Clinically, children with LE do not demonstrate symptoms that distinguish them from non-LE patients^[15]. Moreover, the endoscopic findings are not specific; the esophageal mucosa might be unremarkable, edematous, or with erosions, similar to patients with reflux esophagitis^[15,20].

LE is a diagnosis made on the basis of histologic findings. However, there is no widely accepted diagnostic criteria. The initial description^[19] defined LE as having greater than 20 intraepithelial lymphocytes (IELs) per high-power field (HPF) with rare granulocytes, while the articles of LE in pediatric patients^[15,20] defined LE as esophageal mucosa with greater than 50 IELs per HPF and less than 1 granulocyte per 50 IELs. Patil *et al*^[21] argued that there is currently not enough evidence to support formal counting of lymphocytes to diagnose LE in daily practice. The skepticism is primarily due to the lack of data on the normal range of IELs in the esophageal mucosa. Putra *et al*^[22] evaluated esophageal mucosal biopsies of 17 asymptomatic volunteers (age: 34 ± 9 years) and reported that the cut-offs for IEL (mean + 2SD) at gastroesophageal junction, distal esophagus, and mid esophagus were 62, 46, and 41 IELs per HPF, respectively. Meanwhile, there is no available data on the normal esophageal lymphocyte count in healthy children.

In practice, the authors use the diagnostic criteria established by Rubio *et al*^[19] (greater than 20 IELs per HPF with no significant granulocytes; **Figure 1A** and **B**). Mucosal injury, in the form of edema or dyskeratosis, also often accompanies

intraepithelial lymphocytosis^[21]. IELs are more prominent in patients with CD and they usually demonstrate peripapillary distribution^[20].

It is important to note that LE is not specific for childhood IBD and this association is not observed in adult patients^[23]. LE is also seen in patients with esophageal candidiasis, motility disorders, gastroesophageal reflux disease, and immune-mediated disorders, among others^[19,21-27]. Therefore, in the pathology report of LE patients with no clinical history of IBD, a note stating that LE is a nonspecific histologic finding and listing the clinical correlates is advised^[21].

In addition to the aforementioned conditions, LE also shows overlap histologic findings with lichen planus esophagitis and lichenoid esophagitis^[28]. Microscopically, lichen planus esophagitis is characterized by atrophic epithelial changes, a prominent band-like infiltrate in the epithelium and lamina propria, and scattered degenerated keratinocytes with direct immunofluorescence studies showing globular IgM deposits at the dermo-epidermal junction and complement staining in apoptotic keratinocytes^[28,29]. Lichenoid esophagitis is a term reserved for biopsies showing histologic findings similar to lichen planus esophagitis with negative direct immunofluorescence studies; this histologic pattern has been associated with viral hepatitis and human immunodeficiency virus (HIV) infection^[28].

FEG

FEG was introduced by Oberhuber *et al*^[30] as a frequent type of gastritis in CD patients. In children, FEG is identified in both CD and UC patients with a reported prevalence of 54%-55% and 21%-30%^[31,32], respectively, therefore it does not reliably distinguish between the two entities. The reported sensitivity and specificity of FEG for IBD to be 36%-41% and 94%-97%, respectively^[32,33]. Children with FEG are 15.4 times more likely to have an IBD^[32]. Although not entirely specific, the association between FEG and IBD is also observed in adult patients^[30].

Clinically, there is no significant difference in the UGI tract symptoms between IBD children with and without FEG^[10]. Abnormal endoscopic findings are more commonly identified in patients with FEG (49% to 68.7%)^[10,31]; these abnormalities include aphthoid ulcers and submucosal bleeding^[10].

FEG predominantly involves the antrum and is histologically defined as a focal pit (involving at least one foveolum/gastric gland) inflammation consisting of lymphocytes and histiocytes resulting in epithelial injury (Figure 1C and D)^[30]. The lesion may contain plasma cells, eosinophils, and neutrophils; while, the background mucosa should be relatively normal^[30,31,33]. In the setting of increased lymphoplasmacytic infiltrate in the lamina propria, the authors prefer to use the term "chronic active/inactive gastritis".

Multifocal involvement is common and the total number of glands involved is higher in UC patients (6.4 ± 5.1 glands) compared to those with CD patients (4.0 ± 3.0 glands)^[31]. CD patients with FEG are more likely than those without FEG to have active ileitis and granulomas elsewhere in gastrointestinal tract. Meanwhile, there is no correlation reported between FEG and other gastrointestinal findings in UC patients^[31].

Histologically, FEG should be distinguished from lymphoid aggregates in the gastric biopsies. Multiple levels along with absence or presence of epithelial injury may resolve this issue. In addition, the presence of neutrophils should prompt a search for *Helicobacter pylori* organisms.

DUODENAL INFLAMMATION

Alper *et al*^[34] reported that duodenitis is identified in 12.7% of children undergoing endoscopy with celiac disease and IBD as the most common etiologies. The prevalence of duodenitis in childhood CD and UC ranges from 33%-48% and 0%-29%, respectively^[13,35-37]. More than half of children with biopsy-proven duodenitis demonstrate unremarkable duodenal mucosa on endoscopy^[34]. Macroscopic abnormalities associated with duodenitis include edema, erythema, erosions, scalloping, and ulcers^[34].

Histologically, there is no specific histologic feature that reliably distinguish IBD from non-IBD associated duodenitis with the exception of CD-associated granulomas. Hardee *et al*^[18] reported that cryptitis is significantly more frequently seen in children with IBD compared to patients with celiac disease and other underlying etiologies (Figure 2). Other histologic abnormalities noted in the duodenal mucosa of children with IBD include increased IELs [greater than 20 IELs per 100 enterocytes on

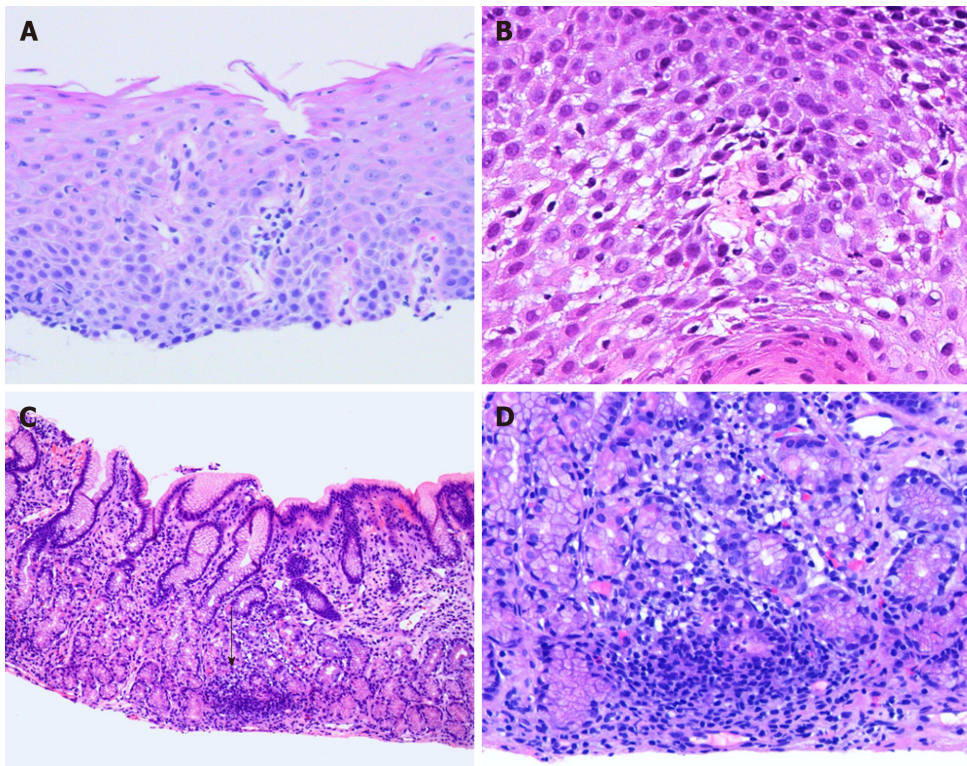


Figure 1 Hematoxylin and eosin staining. A and B: Lymphocytic esophagitis is characterized by increased intraepithelial lymphocytes, predominantly peripapillary, with absence of intraepithelial eosinophils and neutrophils [hematoxylin and eosin (H and E), 10 × and 20 ×]. C: Low power view of focally enhanced gastritis demonstrates focal dense infiltrate surrounding a gland (black arrow) with a minimal increase of lymphoplasmacytic infiltrate in the lamina propria (H and E, 4 ×); D: Focally enhanced gastritis is characterized by lymphohistiocytic infiltrate with scattered neutrophils and associated glandular damage seen on medium power view (H and E, 10 ×).

hematoxylin and eosin (H and E) sections], villous blunting, and lamina propria eosinophilia (greater than 20 eosinophils per HPF)^[18].

In the absence of IBD, other diagnostic considerations for duodenal abnormalities such as celiac disease, *Helicobacter pylori* infection, nonsteroidal anti-inflammatory medications, bacterial overgrowth, and certain autoimmune diseases should be considered^[34,38].

The presence of villous blunting and duodenal lymphocytosis in untreated celiac disease is more frequent and prominent compared to children with IBD. However, the presence of partial villous blunting or mild increased IELs should raise the possibility of early celiac disease. Alper *et al*^[39] reported that although false-positive anti-tissue transglutaminase antibodies (tTG) could occur in children with IBD, the prevalence of celiac disease in these patients is similar to general population.

EPITHELIOID/NON-CASEATING GRANULOMAS

De Matos *et al*^[40] reported that epithelioid granulomas were identified in 61% of children with CD who underwent EGD and colonoscopy at diagnosis. A significant proportion of these patients (13.4%) showed granulomas only in the UGI tract biopsies, emphasizing the importance of EGD in this patient population^[40]. The frequency of granulomas in the esophagus, stomach, and duodenum of untreated CD patients was 2.7%, 20.1%, and 3.8%, respectively^[40]. Meanwhile, a higher proportion of children showed granulomas in the terminal ileum (34.8%) and large intestine (35.3%)^[40].

Histologically, CD-associated granulomas are characterized by collections of at least 5 epithelioid histiocytes with or without multinucleated giant cells, without necrotizing component (caseation), and away from ruptured gland/crypt^[40,41]. The histologic differential diagnosis for granulomas includes chronic granulomatous disease, common variable immune deficiency, and an infectious process^[42]. Therefore, clinical correlation to exclude other diagnostic considerations is crucial.

The presence of granulomas has been reported to represent a more severe disease phenotype. CD patients with granulomas prior to treatment are associated with

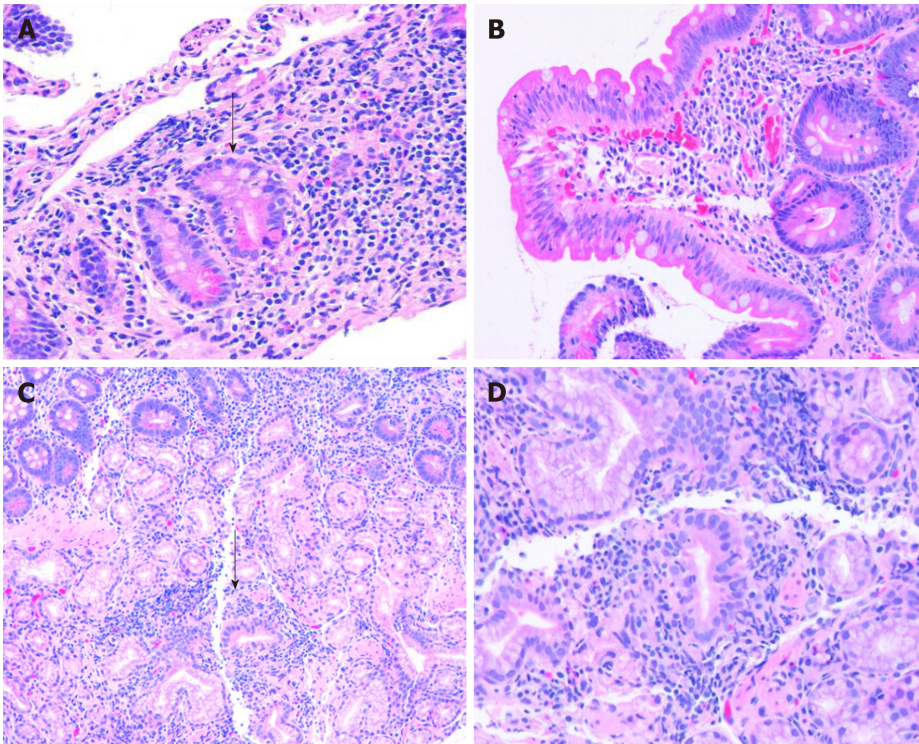


Figure 2 Duodenal manifestations of inflammatory bowel disease. Duodenal manifestations of inflammatory bowel disease include (A) focal cryptitis (black arrow) [hematoxylin and eosin (H and E), 10 ×], (B) increased intraepithelial lymphocytes (H and E, 10 ×), and (C and D) Brunner gland inflammation (black arrow) (H and E, 4 × and 10 ×).

perianal disease, gastritis, hypoalbuminemia, subsequent biologic treatment and hospitalization^[40,43].

CONCLUSION

UGI tract manifestation of IBD is more frequently observed in children compared to adults. Pathologic findings of LE, FEG, duodenal inflammation, and epithelioid granulomas would support the diagnosis of childhood IBD in the appropriate clinical setting. With the exception of CD-associated granulomas, the histologic findings of these entities are non-specific; thus, cannot reliably classify childhood IBD. Clinicians should be mindful of the utility and limitations of these histologic findings, and pathologists should be aware of the differential diagnosis and clinical correlates of each entity.

REFERENCES

- 1 **Markowitz J.** Crohn's disease and ulcerative colitis. In: Wylie R, Hyams JS. Pediatric gastrointestinal disease. Philadelphia: WB Saunders 1999; 320-340
- 2 **Sýkora J, Pomahačová R, Kreslová M, Cvalínová D, Štych P, Schwarz J.** Current global trends in the incidence of pediatric-onset inflammatory bowel disease. *World J Gastroenterol* 2018; **24**: 2741-2763 [PMID: 29991879 DOI: 10.3748/wjg.v24.i25.2741]
- 3 **Benchimol EI, Bernstein CN, Bitton A, Carroll MW, Singh H, Otley AR, Vutcovici M, El-Matary W, Nguyen GC, Griffiths AM, Mack DR, Jacobson K, Mojaverian N, Tanyingoh D, Cui Y, Nugent ZJ, Coulombe J, Targownik LE, Jones JL, Leddin D, Murthy SK, Kaplan GG.** Trends in Epidemiology of Pediatric Inflammatory Bowel Disease in Canada: Distributed Network Analysis of Multiple Population-Based Provincial Health Administrative Databases. *Am J Gastroenterol* 2017; **112**: 1120-1134 [PMID: 28417994 DOI: 10.1038/ajg.2017.97]
- 4 **Adamiak T, Walkiewicz-Jedrzejczak D, Fish D, Brown C, Tung J, Khan K, Faubion W, Park R, Heikenen J, Yaffee M, Rivera-Bennett MT, Wiedkamp M, Stephens M, Noel R, Nugent M, Nebel J, Simpson P, Kappelman MD, Kugathasan S.** Incidence, clinical characteristics, and natural history of pediatric IBD in Wisconsin: a population-based epidemiological study. *Inflamm Bowel Dis* 2013; **19**: 1218-1223 [PMID: 23528339 DOI: 10.1097/MIB.0b013e318280b13e]
- 5 **Birimberg-Schwartz L, Zucker DM, Akriv A, Cucchiara S, Cameron FL, Wilson DC, Lazowska I, Yianni L, Paul SP, Romano C, Kolacek S, Buderus S, Pæregaard A, Russell RK, Escher JC, Turner D, Pediatric IBD Porto group of ESPGHAN.** Development and Validation of Diagnostic Criteria for IBD Subtypes Including IBD-unclassified in Children: a Multicentre Study From the Pediatric IBD Porto Group

- of ESPGHAN. *J Crohns Colitis* 2017; **11**: 1078-1084 [PMID: 28430891 DOI: 10.1093/ecco-jcc/jjx053]
- 6 **Van Limbergen J**, Russell RK, Drummond HE, Aldhous MC, Round NK, Nimmo ER, Smith L, Gillett PM, McGrogan P, Weaver LT, Bisset WM, Mahdi G, Arnott ID, Satsangi J, Wilson DC. Definition of phenotypic characteristics of childhood-onset inflammatory bowel disease. *Gastroenterology* 2008; **135**: 1114-1122 [PMID: 18725221 DOI: 10.1053/j.gastro.2008.06.081]
- 7 **Levine A**, Koletzko S, Turner D, Escher JC, Cucchiara S, de Ridder L, Kolho KL, Veres G, Russell RK, Paerregaard A, Buderus S, Greer ML, Dias JA, Veereman-Wauters G, Lionetti P, Sladek M, Martin de Carpi J, Staiano A, Ruemmele FM, Wilson DC; European Society of Pediatric Gastroenterology, Hepatology, and Nutrition. ESPGHAN revised porto criteria for the diagnosis of inflammatory bowel disease in children and adolescents. *J Pediatr Gastroenterol Nutr* 2014; **58**: 795-806 [PMID: 24231644 DOI: 10.1097/MPG.0000000000000239]
- 8 **Castellaneta SP**, Afzal NA, Greenberg M, Deere H, Davies S, Murch SH, Walker-Smith JA, Thomson M, Srivastava A. Diagnostic role of upper gastrointestinal endoscopy in pediatric inflammatory bowel disease. *J Pediatr Gastroenterol Nutr* 2004; **39**: 257-261 [PMID: 15319625]
- 9 **Hummel TZ**, ten Kate FJ, Reitsma JB, Benninga MA, Kindermann A. Additional value of upper GI tract endoscopy in the diagnostic assessment of childhood IBD. *J Pediatr Gastroenterol Nutr* 2012; **54**: 753-757 [PMID: 22584746 DOI: 10.1097/MPG.0b013e318243e3e3]
- 10 **Putra J**, Ornvold K. Focally enhanced gastritis in children with inflammatory bowel disease: a clinicopathological correlation. *Pathology* 2017; **49**: 808-810 [PMID: 29078999 DOI: 10.1016/j.pathol.2017.06.007]
- 11 **Oliva S**, Thomson M, de Ridder L, Martín-de-Carpi J, Van Biervliet S, Braegger C, Dias JA, Kolacek S, Miele E, Buderus S, Bronsky J, Winter H, Navas-López VM, Assa A, Chong SKF, Afzal NA, Smets F, Shaoul R, Hussey S, Turner D, Cucchiara S. Endoscopy in Pediatric Inflammatory Bowel Disease: A Position Paper on Behalf of the Porto IBD Group of the European Society for Pediatric Gastroenterology, Hepatology and Nutrition. *J Pediatr Gastroenterol Nutr* 2018; **67**: 414-430 [PMID: 30130311 DOI: 10.1097/MPG.00000000000002092]
- 12 **Turner D**, Griffiths AM. Esophageal, gastric, and duodenal manifestations of IBD and the role of upper endoscopy in IBD diagnosis. *Curr Gastroenterol Rep* 2009; **11**: 234-237 [PMID: 19463224]
- 13 **Kovacs M**, Muller KE, Arato A, Lakatos PL, Kovacs JB, Varkonyi A, Solyom E, Polgar M, Nemes E, Guthy I, Tokodi I, Toth G, Horvath A, Tarnok A, Tomsits E, Csoszanszky N, Balogh M, Vass N, Bodi P, Dezsöfi A, Gardos L, Micskey E, Papp M, Szucs D, Cseh A, Molnar K, Szabo D, Veres G; Hungarian IBD Registry Group (HUPIR). Diagnostic yield of upper endoscopy in paediatric patients with Crohn's disease and ulcerative colitis. Subanalysis of the HUPIR registry. *J Crohns Colitis* 2012; **6**: 86-94 [PMID: 22261532 DOI: 10.1016/j.crohns.2011.07.008]
- 14 **de Bie CI**, Buderus S, Sandhu BK, de Ridder L, Paerregaard A, Veres G, Dias JA, Escher JC, EUROKIDS Porto IBD Working Group of ESPGHAN. Diagnostic workup of paediatric patients with inflammatory bowel disease in Europe: results of a 5-year audit of the EUROKIDS registry. *J Pediatr Gastroenterol Nutr* 2012; **54**: 374-380 [PMID: 21857248 DOI: 10.1097/MPG.0b013e318231d984]
- 15 **Ebach DR**, Vanderheyden AD, Ellison JM, Jensen CS. Lymphocytic esophagitis: a possible manifestation of pediatric upper gastrointestinal Crohn's disease. *Inflamm Bowel Dis* 2011; **17**: 45-49 [PMID: 20848529 DOI: 10.1002/ibd.21347]
- 16 **Basturk A**, Artan R, Yilmaz A, Gelen MT. Gastritis Associated with Initially Pediatric Crohn's Disease and Ulcerative Colitis. *Pediatr Gastroenterol Hepatol Nutr* 2018; **21**: 163-169 [PMID: 29992115 DOI: 10.5223/pghn.2018.21.3.163]
- 17 **Papamichael K**, Konstantopoulos P, Mantzaris GJ. Helicobacter pylori infection and inflammatory bowel disease: is there a link? *World J Gastroenterol* 2014; **20**: 6374-6385 [PMID: 24914359 DOI: 10.3748/wjg.v20.i21.6374]
- 18 **Hardee S**, Alper A, Pashankar DS, Morotti RA. Histopathology of duodenal mucosal lesions in pediatric patients with inflammatory bowel disease: statistical analysis to identify distinctive features. *Pediatr Dev Pathol* 2014; **17**: 450-454 [PMID: 25207874 DOI: 10.2350/14-07-1529-OA.1]
- 19 **Rubio CA**, Sjö Dahl K, Lagergren J. Lymphocytic esophagitis: a histologic subset of chronic esophagitis. *Am J Clin Pathol* 2006; **125**: 432-437 [PMID: 16613348]
- 20 **Sutton LM**, Heintz DD, Patel AS, Weinberg AG. Lymphocytic esophagitis in children. *Inflamm Bowel Dis* 2014; **20**: 1324-1328 [PMID: 24983984 DOI: 10.1097/MIB.0000000000000100]
- 21 **Patil DT**, Hammer S, Langer R, Yantiss RK. Lymphocytic esophagitis: an update on histologic diagnosis, endoscopic findings, and natural history. *Ann N Y Acad Sci* 2018; **1434**: 185-191 [PMID: 29797752 DOI: 10.1111/nyas.13710]
- 22 **Putra J**, Muller KE, Hussain ZH, Parker S, Gabbard S, Brickley EB, Lacy BE, Rothstein R, Lisovsky M. Lymphocytic Esophagitis in Nonachalasia Primary Esophageal Motility Disorders: Improved Criteria, Prevalence, Strength of Association, and Natural History. *Am J Surg Pathol* 2016; **40**: 1679-1685 [PMID: 27526295 DOI: 10.1097/PAS.0000000000000712]
- 23 **Lisovsky M**, Westerhoff M, Zhang X. Lymphocytic esophagitis: a histologic pattern with emerging clinical ramifications. *Ann N Y Acad Sci* 2016; **1381**: 133-138 [PMID: 27635640 DOI: 10.1111/nyas.13260]
- 24 **Abuquteish D**, Siddiqui I, Putra J. Lymphocytic Esophagitis: Inflammatory Pattern of Candida Esophagitis in a Patient With Ulcerative Colitis. *Int J Surg Pathol* 2019; 1066896918824023 [PMID: 30651012 DOI: 10.1177/1066896918824023]
- 25 **Xue Y**, Suriawinata A, Liu X, Li Z, Gabbard S, Rothstein R, Lacy B, Lisovsky M. Lymphocytic Esophagitis With CD4 T-cell-predominant Intraepithelial Lymphocytes and Primary Esophageal Motility Abnormalities: A Potential Novel Clinicopathologic Entity. *Am J Surg Pathol* 2015; **39**: 1558-1567 [PMID: 26379147 DOI: 10.1097/PAS.0000000000000493]
- 26 **Pasricha S**, Gupta A, Reed CC, Speck O, Woosley JT, Dellon ES. Lymphocytic Esophagitis: An Emerging Clinicopathologic Disease Associated with Dysphagia. *Dig Dis Sci* 2016; **61**: 2935-2941 [PMID: 27343035 DOI: 10.1007/s10620-016-4230-2]
- 27 **Haq S**, Genta RM. Lymphocytic oesophagitis: clinicopathological aspects of an emerging condition. *Gut* 2012; **61**: 1108-1114 [PMID: 22157333 DOI: 10.1136/gutjnl-2011-301014]
- 28 **Salari SN**, Abu Alfa AK, Cruise MW, Wood LD, Montgomery EA. Lichenoid esophagitis: clinicopathologic overlap with established esophageal lichen planus. *Am J Surg Pathol* 2013; **37**: 1889-1894 [PMID: 24061525 DOI: 10.1097/PAS.0b013e31829df19]
- 29 **Abraham SC**, Ravich WJ, Anhalt GJ, Yardley JH, Wu TT. Esophageal lichen planus: case report and review of the literature. *Am J Surg Pathol* 2000; **24**: 1678-1682 [PMID: 11117791]

- 30 **Oberhuber G**, Püspök A, Oesterreicher C, Novacek G, Zauner C, Burghuber M, Vogelsang H, Pötzi R, Stolte M, Wrba F. Focally enhanced gastritis: a frequent type of gastritis in patients with Crohn's disease. *Gastroenterology* 1997; **112**: 698-706 [PMID: [9041230](#)]
- 31 **Ushiku T**, Moran CJ, Lauwers GY. Focally enhanced gastritis in newly diagnosed pediatric inflammatory bowel disease. *Am J Surg Pathol* 2013; **37**: 1882-1888 [PMID: [24121177](#) DOI: [10.1097/PAS.0b013e31829f03ee](#)]
- 32 **Roka K**, Roma E, Stefanaki K, Panayotou I, Kopsidas G, Chouliaras G. The value of focally enhanced gastritis in the diagnosis of pediatric inflammatory bowel diseases. *J Crohns Colitis* 2013; **7**: 797-802 [PMID: [23207168](#) DOI: [10.1016/j.crohns.2012.11.003](#)]
- 33 **McHugh JB**, Gopal P, Greenson JK. The clinical significance of focally enhanced gastritis in children. *Am J Surg Pathol* 2013; **37**: 295-299 [PMID: [23108022](#) DOI: [10.1097/PAS.0b013e31826b2a94](#)]
- 34 **Alper A**, Hardee S, Rojas-Velasquez D, Escalera S, Morotti RA, Pashankar DS. Prevalence and Clinical, Endoscopic, and Pathological Features of Duodenitis in Children. *J Pediatr Gastroenterol Nutr* 2016; **62**: 314-316 [PMID: [26252915](#) DOI: [10.1097/MPG.0000000000000942](#)]
- 35 **Tobin JM**, Sinha B, Ramani P, Saleh AR, Murphy MS. Upper gastrointestinal mucosal disease in pediatric Crohn disease and ulcerative colitis: a blinded, controlled study. *J Pediatr Gastroenterol Nutr* 2001; **32**: 443-448 [PMID: [11396811](#)]
- 36 **Sonnenberg A**, Melton SD, Genta RM. Frequent occurrence of gastritis and duodenitis in patients with inflammatory bowel disease. *Inflamm Bowel Dis* 2011; **17**: 39-44 [PMID: [20848539](#) DOI: [10.1002/ibd.21356](#)]
- 37 **Genta RM**, Sonnenberg A. Non-Helicobacter pylori gastritis is common among paediatric patients with inflammatory bowel disease. *Aliment Pharmacol Ther* 2012; **35**: 1310-1316 [PMID: [22486730](#) DOI: [10.1111/j.1365-2036.2012.05090.x](#)]
- 38 **Hammer ST**, Greenson JK. The clinical significance of duodenal lymphocytosis with normal villus architecture. *Arch Pathol Lab Med* 2013; **137**: 1216-1219 [PMID: [23991733](#) DOI: [10.5858/arpa.2013-0261-RA](#)]
- 39 **Alper A**, Rojas-Velasquez D, Pashankar DS. Prevalence of Anti-tissue Transglutaminase Antibodies and Celiac Disease in Children With Inflammatory Bowel Disease. *J Pediatr Gastroenterol Nutr* 2018; **66**: 934-936 [PMID: [29287008](#) DOI: [10.1097/MPG.0000000000001877](#)]
- 40 **De Matos V**, Russo PA, Cohen AB, Mamula P, Baldassano RN, Piccoli DA. Frequency and clinical correlations of granulomas in children with Crohn disease. *J Pediatr Gastroenterol Nutr* 2008; **46**: 392-398 [PMID: [18367950](#) DOI: [10.1097/MPG.0b013e3181e95e1](#)]
- 41 **Pierik M**, De Hertogh G, Vermeire S, Van Assche G, Van Eyken P, Joossens S, Claessens G, Vlietinck R, Rutgeerts P, Geboes K. Epithelioid granulomas, pattern recognition receptors, and phenotypes of Crohn's disease. *Gut* 2005; **54**: 223-227 [PMID: [15647186](#) DOI: [10.1136/gut.2004.042572](#)]
- 42 **Jevon GP**, Madhur R. Endoscopic and histologic findings in pediatric inflammatory bowel disease. *Gastroenterol Hepatol (NY)* 2010; **6**: 174-180 [PMID: [20567564](#)]
- 43 **Rothschild B**, Rinawi F, Herman Y, Nir O, Shamir R, Assa A. Prognostic significance of granulomas in children with Crohn's disease. *Scand J Gastroenterol* 2017; **52**: 716-721 [PMID: [28346037](#) DOI: [10.1080/00365521.2017.1304571](#)]



Published By Baishideng Publishing Group Inc
7041 Koll Center Parkway, Suite 160, Pleasanton, CA 94566, USA
Telephone: +1-925-2238242
Fax: +1-925-2238243
E-mail: bpgoffice@wjgnet.com
Help Desk: <http://www.f6publishing.com/helpdesk>
<http://www.wjgnet.com>

