

World Journal of *Clinical Cases*

World J Clin Cases 2019 September 6; 7(17): 2413-2657





MINIREVIEWS

- 2413** Multifocal G1-G2 gastric neuroendocrine tumors: Differentiating between Type I, II and III, a clinicopathologic review
Algashaamy K, Garcia-Buitrago M
- 2420** Attention deficit hyperactivity disorder and comorbidity: A review of literature
Gnanavel S, Sharma P, Kaushal P, Hussain S

ORIGINAL ARTICLE

Case Control Study

- 2427** Dietary manipulation and testosterone replacement therapy may explain changes in body composition after spinal cord injury: A retrospective case report
Gorgey AS, Lester RM, Ghatas MP, Sistrun SN, Lavis T

Retrospective Study

- 2438** Risk factors, clinical features, and short-term prognosis of spontaneous fungal peritonitis in cirrhosis: A matched case-control study
Huang CH, Pang LT, Xu LC, Ge TT, Xu QM, Chen Z
- 2450** Incidence of portal vein thrombosis after splenectomy and its influence on transjugular intrahepatic portosystemic shunt stent patency
Dong F, Luo SH, Zheng LJ, Chu JG, Huang H, Zhang XQ, Yao KC

Observational Study

- 2463** Multiplex gene expression profile in inflamed mucosa of patients with Crohn's disease ileal localization: A pilot study
Giudici F, Lombardelli L, Russo E, Cavalli T, Zambonin D, Logiodice F, Kullolli O, Giusti L, Bargellini T, Fazi M, Biancone L, Scaringi S, Clemente AM, Perissi E, Delfino G, Torcia MG, Ficari F, Tonelli F, Piccinni MP, Malentacchi C

Prospective Study

- 2477** Analysis of the postoperative hemostatic profile of colorectal cancer patients subjected to liver metastasis resection surgery
Perez Navarro G, Pascual Bellosta AM, Ortega Lucea SM, Serradilla Martín M, Ramirez Rodriguez JM, Martinez Ubieta J

SYSTEMATIC REVIEW

- 2487** Systematic review of ablative therapy for the treatment of renal allograft neoplasms
Favi E, Raison N, Ambrogi F, Delbue S, Clementi MC, Lamperti L, Perego M, Bischeri M, Ferraresso M

CASE REPORT

- 2505** Subcutaneous sarcoidosis of the upper and lower extremities: A case report and review of the literature
Mehrzaad R, Festa J, Bhatt R
- 2513** Atypical cutaneous lesions in advanced-stage Hodgkin lymphoma: A case report
Massaro F, Ferrari A, Zendri E, Zanelli M, Merli F
- 2519** Characteristics of multiple nodules in a patient with pulmonary Langerhans cell histiocytosis: A case report
Kanaji N, Tokunaga Y, Ishikawa R, Watanabe N, Kadowaki N
- 2526** Impact of continuous local lavage on pancreatic juice-related postoperative complications: Three case reports
Hori T, Ogawa K, Yamamoto H, Harada H, Matsumura K, Yamamoto M, Yamada M, Yazawa T, Kuriyama K, Tani M, Yasukawa D, Kamada Y, Aisu Y, Tani R, Aoyama R, Nakayama S, Sasaki Y, Nishimoto K, Zaima M
- 2536** Adult intussusception caused by colonic anisakis: A case report
Choi YI, Park DK, Cho HY, Choi SJ, Chung JW, Kim KO, Kwon KA, Kim YJ
- 2542** Robotic-assisted resection of ovarian tumors in children: A case report
Xie XX, Wang N, Wang ZH, Zhu YY, Wang JR, Wang XQ
- 2549** Synovial sarcoma in the plantar region: A case report and literature review
Gao J, Yuan YS, Liu T, Lv HR, Xu HL
- 2556** Severe serous cavity bleeding caused by acquired factor V deficiency associated with lymphatic leakage in a hemodialysis patient: A case report
Zhao WB, Chen YR, Luo D, Lin HC, Long B, Wu ZY, Peng H
- 2562** Supermicrosurgery in fingertip defects-split tibial flap of the second toe to reconstruct multiple fingertip defects: A case report
Wang KL, Zhang ZQ, Buckwalter JA, Yang Y
- 2567** Ultrasound-guided fascia iliaca compartment block combined with general anesthesia for amputation in an acute myocardial infarction patient after percutaneous coronary intervention: A case report
Ling C, Liu XQ, Li YQ, Wen XJ, Hu XD, Yang K
- 2573** Rare spontaneous intrahepatic portosystemic shunt in hepatitis B-induced cirrhosis: A case report
Tan YW, Sheng JH, Tan HY, Sun L, Yin YM
- 2580** Imaging of mixed epithelial and stromal tumor of the kidney: A case report and review of the literature
Ye J, Xu Q, Zheng J, Wang SA, Wu YW, Cai JH, Yuan H
- 2587** Allogenic tooth transplantation using 3D printing: A case report and review of the literature
Xu HD, Miron RJ, Zhang XX, Zhang YF

REVIEW

- 2597 Fecal microbiota transplantation as an effective initial therapy for pancreatitis complicated with severe *Clostridium difficile* infection: A case report
Hu Y, Xiao HY, He C, Lv NH, Zhu L

CASE REPORT

- 2605 Organ-associated pseudosarcomatous myofibroblastic proliferation with ossification in the lower pole of the kidney mimicking renal pelvic carcinoma: A case report
Zhai TY, Luo BJ, Jia ZK, Zhang ZG, Li X, Li H, Yang JJ
- 2611 Treating aplasia cutis congenita in a newborn with the combination of ionic silver dressing and moist exposed burn ointment: A case report
Lei GF, Zhang JP, Wang XB, You XL, Gao JY, Li XM, Chen ML, Ning XQ, Sun JL
- 2617 Cause of postprandial vomiting - a giant retroperitoneal ganglioneuroma enclosing large blood vessels: A case report
Zheng X, Luo L, Han FG
- 2623 Carcinoma ex pleomorphic adenoma of the trachea: A case report
Gao HX, Li Q, Chang WL, Zhang YL, Wang XZ, Zou XX
- 2630 Wilson disease associated with immune thrombocytopenia: A case report and review of the literature
Ma TJ, Sun GL, Yao F, Yang ZL
- 2637 Calcifying fibrous tumor of the mediastinum: A case report
Qi DJ, Zhang QF
- 2644 Brachiocephalic artery stenting through the carotid artery: A case report and review of the literature
Xu F, Wang F, Liu YS
- 2652 An extremely rare pedunculated lipoma of the hypopharynx: A case report
Sun Q, Zhang CL, Liu ZH

ABOUT COVER

Editorial Board Member of *World Journal of Clinical Cases*, Marianna Luongo, MD, Doctor, Surgeon, Department of Neurosurgery, Azienda Ospedaliera Regionale San Carlo, Potenza 85100, Italy

AIMS AND SCOPE

The primary aim of the *World Journal of Clinical Cases (WJCC)* is to provide scholars and readers from various fields of clinical medicine with a platform to publish high-quality clinical research articles and communicate their research findings online.

The *WJCC* mainly publishes case reports, case series, research results and findings in the field of clinical medicine covering a wide range of topics including diagnostic, therapeutic, and preventive modalities.

INDEXING/ABSTRACTING

The *WJCC* is now indexed in PubMed, PubMed Central, Science Citation Index Expanded (also known as SciSearch®), and Journal Citation Reports/Science Edition. The 2019 Edition of Journal Citation Reports cites the 2018 impact factor for *WJCC* as 1.153 (5-year impact factor: N/A), ranking *WJCC* as 99 among 160 journals in Medicine, General and Internal (quartile in category Q3).

RESPONSIBLE EDITORS FOR THIS ISSUE

Responsible Electronic Editor: *Yan-Xia Xing*

Proofing Production Department Director: *Yun-Xiaojian Wu*

NAME OF JOURNAL

World Journal of Clinical Cases

ISSN

ISSN 2307-8960 (online)

LAUNCH DATE

April 16, 2013

FREQUENCY

Semimonthly

EDITORS-IN-CHIEF

Dennis A Bloomfield, Sandro Vento

EDITORIAL BOARD MEMBERS

<https://www.wjnet.com/2307-8960/editorialboard.htm>

EDITORIAL OFFICE

Jin-Lei Wang, Director

PUBLICATION DATE

September 6, 2019

COPYRIGHT

© 2019 Baishideng Publishing Group Inc

INSTRUCTIONS TO AUTHORS

<https://www.wjnet.com/bpg/gerinfo/204>

GUIDELINES FOR ETHICS DOCUMENTS

<https://www.wjnet.com/bpg/GerInfo/287>

GUIDELINES FOR NON-NATIVE SPEAKERS OF ENGLISH

<https://www.wjnet.com/bpg/gerinfo/240>

PUBLICATION MISCONDUCT

<https://www.wjnet.com/bpg/gerinfo/208>

ARTICLE PROCESSING CHARGE

<https://www.wjnet.com/bpg/gerinfo/242>

STEPS FOR SUBMITTING MANUSCRIPTS

<https://www.wjnet.com/bpg/GerInfo/239>

ONLINE SUBMISSION

<https://www.f6publishing.com>



Carcinoma ex pleomorphic adenoma of the trachea: A case report

Heng-Xing Gao, Quan Li, Wen-Li Chang, Ya-Long Zhang, Xiao-Zhi Wang, Xue-Xue Zou

ORCID number: Heng-Xing Gao (0000-0002-0862-8797); Quan Li (0000-0002-6392-6789); Wen-Li Chang (0000-0001-8588-3364); Ya-Long Zhang (0000-0001-8290-0421); Xiao-Zhi Wang (0000-0002-2949-0985); Xue-Xue Zou (0000-0003-1379-5722).

Author contributions: Gao HX and Li Q drafted the first manuscript. Chang WL and Zhang YL contributed to the histological diagnosis. Wang XZ searched the literature data and was responsible for the clinical care. Zou XX supervised the manuscript revision and provided imaging materials.

Informed consent statement: Informed written consent was obtained from the patient.

Conflict-of-interest statement: The authors declare that they have no conflict of interest.

CARE Checklist (2016) statement: The manuscript was prepared and revised according to the CARE Checklist (2016).

Open-Access: This article is an open-access article which was selected by an in-house editor and fully peer-reviewed by external reviewers. It is distributed in accordance with the Creative Commons Attribution Non Commercial (CC BY-NC 4.0) license, which permits others to distribute, remix, adapt, build upon this work non-commercially, and license their derivative works on different terms, provided the original work is properly cited and the use is non-commercial. See: <http://creativecommons.org/licenses/by-nc/4.0/>

Manuscript source: Unsolicited

Heng-Xing Gao, Xiao-Zhi Wang, Respiratory Department, Binzhou Medical University Hospital, Binzhou 256603, Shandong Province, China

Quan Li, Xue-Xue Zou, Department of Radiology, Binzhou Medical University Hospital, Binzhou 256603, Shandong Province, China

Wen-Li Chang, Ya-Long Zhang, Department of Pathology, Binzhou Medical University Hospital, Binzhou 256603, Shandong Province, China

Corresponding author: Xue-Xue Zou, MD, Doctor, Department of Radiology, Binzhou Medical University Hospital, The Yellow River Road, Binzhou 256603, Shandong Province, China. byfyzxx2015@163.com
Telephone: +86-543-3256590

Abstract

BACKGROUND

Carcinoma ex pleomorphic adenoma (CXPA) is defined as a malignant salivary gland tumor arising from a primary or recurrent pleomorphic adenoma. Only three cases of CXPA of the trachea have been reported in the literature.

CASE SUMMARY

We report a case of tracheal CXPA in a 55-year-old woman, who presented with a more than 3-mo history of progressive dyspnea. Computed tomography of the neck and thorax revealed an inhomogeneous, broad-based lesion arising from the tracheal wall on the right side. Endoscopy revealed a subglottic neoplasm causing up to 90% luminal stenosis. The tumor was resected using a high-frequency electrosurgical snare combined with argon plasma coagulation. Histopathology and immunohistochemistry revealed that the tumor was a CXPA of the trachea.

CONCLUSION

We report the fourth case of tracheal CXPA, and present the first instance of resection of CXPA using high-frequency electrosurgical snare and laser ablation. We also discuss the pathogenesis, diagnosis, histopathology, and systemic therapy of this rare disease.

Key words: Case report; Carcinoma ex pleomorphic adenoma; Trachea; Pleomorphic adenoma

©The Author(s) 2019. Published by Baishideng Publishing Group Inc. All rights reserved.

Core tip: After extensive search of literature in English, there are only 3 previous reports

manuscript

Received: March 21, 2019**Peer-review started:** March 23, 2019**First decision:** July 30, 2019**Revised:** August 6, 2019**Accepted:** August 20, 2019**Article in press:** August 20, 2019**Published online:** September 6, 2019**P-Reviewer:** Sipos F**S-Editor:** Dou Y**L-Editor:** Wang TQ**E-Editor:** Qi LL

of primary Carcinoma ex pleomorphic adenoma of the trachea. In our case, there are many unique features. In imaging examination, there is no calcification can be seen in the primary tracheal CXPA of the previous cases, but ours can. Given the rare incidence of CXPA in trachea, no standard systemic therapy options have been established. We successfully performed endobronchial resection of the tumor with a high-frequency electrosurgical snare combined with argon plasma coagulation with less injury and quick recovery.

Citation: Gao HX, Li Q, Chang WL, Zhang YL, Wang XZ, Zou XX. Carcinoma ex pleomorphic adenoma of the trachea: A case report. *World J Clin Cases* 2019; 7(17): 2623-2629

URL: <https://www.wjgnet.com/2307-8960/full/v7/i17/2623.htm>

DOI: <https://dx.doi.org/10.12998/wjcc.v7.i17.2623>

INTRODUCTION

Pleomorphic adenoma is the most common benign tumor of the salivary glands. Approximately 6% of pleomorphic adenomas have the potential to transform into carcinoma ex pleomorphic adenoma (CXPA)^[1]. The main histopathological finding in CXPA is the co-existence of the benign characteristics of pleomorphic adenoma with malignant changes in the epithelial components of the tumor. CXPA mainly involves the major salivary glands, of which the parotid gland is the most commonly involved, followed by the submandibular gland^[2]. Tracheal CXPA is an exceedingly rare entity. Herein, we present a case of CXPA arising in the trachea, and a review all cases of tracheal mixed malignant tumors reported in the literature.

CASE PRESENTATION

Chief complaints

A 56-year-old woman was admitted to our hospital with a complaint of progressive dyspnea over the last 3 mo.

History of past illness

The patient had no history of disease in the head and neck region. Her past history was unremarkable.

Personal and family history

The family history was unremarkable.

Physical examination

The patient's inspiratory phase was prolonged and the inspiration was laborious. There were wheezing, laryngeal ringing, and three depressions sign can be seen. Her temperature was 36.8 °C, heart rate was 102 bpm, respiratory rate was 26 bpm, blood pressure was 133/86 mmHg and oxygen saturation in room air was 96%.

Laboratory examinations

Blood analysis revealed normal. The blood biochemistries, as well as urine analysis were normal.

Imaging examinations

A computed tomography scan of the neck and thorax revealed an inhomogeneous, broad-based lesion arising from the tracheal wall on the right side. The lesion measured 1.8 cm × 1.7 cm. Calcification was observed in the anterior part of the lesion (Figure 1). On bronchoscopic examination, a subglottic neoplasm was observed at approximately 5 cm from the carina. The tumor caused up to 90% luminal stenosis of the trachea (Figure 2).

FINAL DIAGNOSIS

Take together, a final diagnosis of primary CXPA of the trachea was established.



Figure 1 Computed tomography scan showing an inhomogeneous, broad-based lesion arising from the tracheal wall on the right side. Calcification can be seen in the anterior part of the tumor.

TREATMENT

The tumor was resected using a high-frequency electrosurgical snare combined with argon plasma coagulation (APC). At 30 min before the operation, the patient was anesthetized with 5 mL of 2% lidocaine (inhaled *via* oxygen-driven atomization) and an intranasal drip of lidocaine combined with 1% furosemide. Propofol 20 mg and fentanyl 100 mg were intravenously administered before surgery. During the surgery, intravenous propofol was administered through a micropump (2-4 mg/kg/h). Throughout the treatment, the patient's pulse, oxygen saturation, respiration, and blood pressure were dynamically monitored. Routine nasal insertion of a bronchoscope was performed to reach the lesion site. A high-frequency electrosurgical snare and an APC catheter were inserted into the airway through the bronchoscope. The power supply for electrocutting (35-40 W) and electrocoagulation (30-35 W) was turned on at the same time. To resect the tumor, we placed the snare near the base of the tumor and slowly closed it around the tumor pedicle while simultaneously applying electrocoagulation.

For the remaining tumor tissue in the basal part, we placed the electrocoagulation probe on the lesion and applied a current for 0.5-1.0 s. Electrocoagulation was performed multiple times to coagulate and vaporize the lesion. The necrotic tissues were removed using biopsy forceps or bronchoscopic suction. The surgical field was intermittently rinsed with a cold saline solution containing adrenaline (dilution, 1:10000) to maintain a clear view. The depth of electrocoagulation did not exceed 3 mm. After APC treatment, jelly-like cellulosic exudates and necrosis may form and lead to airway obstruction; these need to be cleaned regularly by using biopsy forceps or bronchoscopic suction.

Histopathological examination

On histopathological examination, benign pleomorphic adenoma-like areas and large malignant cells with pleomorphic and prominent nucleoli were recognized (**Figure 3**). The tumor was composed of glandular and tubular structures along with myoepithelial cells within stromal elements, which was suggestive of a pleomorphic adenoma. In the epithelial areas, solid nests and cords of polygonal tumor cells were observed. The adjacent areas showed chondromyxoid materials. The solid nests had a cribriform pattern, and were associated with dense hyalinized stroma, which was incorporated into the tumor islands and sheets. The cribriform pattern was suggestive of adenoid cystic carcinoma (**Figure 4**).

Immunohistochemistry revealed strong immunoreactivity with cytokeratins in both the ductal epithelial cells and myoepithelial cells. The tumor was negative for glial fibrillary acidic protein. The myoepithelial cells were positive for smooth muscle actin, the myoepithelial marker P63, vimentin, and CD43. Staining for s-100 protein and CD117 was positive in the ductal epithelial cells. Alcian blue staining was positive in the mucous-like substance that filled in the sieve-like structure of the gland. Periodic acid-Schiff staining was positive in the luminal contents of the gland.

OUTCOME AND FOLLOW-UP

At 6 d after the tumor resection, the patient was well and was discharged.

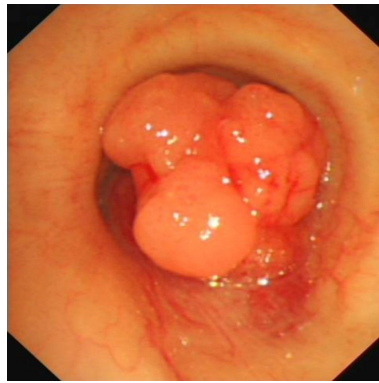


Figure 2 Bronchoscopic examination showing a subglottic neoplasm causing up to 90% luminal stenosis of the trachea.

Unfortunately, fiberoptic bronchoscopy revealed tumor recurrence after 11 mo. The patient again underwent treatment with a high-frequency electrosurgical snare combined with APC. Additionally, postoperative radiotherapy (60 Gy) was performed. The patient has been well for 10 mo until now after the second surgery.

DISCUSSION

CXPA is defined as an epithelial malignancy arising in or from a primary or recurrent benign pleomorphic adenoma^[1,3-4]. This tumor most commonly affects the salivary glands. Primary CXPA of the tracheobronchial system has been reported only infrequently. The pathogenesis of CXPA is unknown. Chooback *et al*^[5] proposed a role for the deficiency of some genes, such as those on chromosomal arms 8q, 12q, and 17p. Kim *et al*^[6] suggested that the accumulation of genetic instabilities was the main cause of malignant transformation in pleomorphic carcinoma. The above hypotheses were based on salivary gland tumors, and it is unclear whether these apply to CXPA of the tracheobronchial system.

Malignant mixed tumors of the salivary glands classically encompass three distinct tumors: CXPA, carcinosarcoma, and metastasizing pleomorphic adenoma^[7]. A review of the literature disclosed 11 previous cases of primary malignant mixed tumors of the trachea and bronchus^[8-13]. Of these, only four cases (Ding *et al*^[10], Demirağ *et al*^[11], Hemmi *et al*^[12], and Mori *et al*^[13]) involved the trachea (Table 1); the others involved the hilum and/or bronchi. In the case reported by Hemmi *et al*^[12], no foci of benign pleomorphic adenoma were found in the primary tumor. This indicates that the tumor was a malignant pleomorphic adenoma, and not a CXPA. Thus, only three cases of true primary CXPA of the trachea have been reported. The present case is the fourth report of a primary CXPA of the trachea.

A review of the four previous cases of tracheal malignant mixed tumors showed that the ages of the patients ranged from 56 to 69 years; there were two women and two men. Our patient was a 55-year-old woman. The common clinical symptoms were cough, asthma, and dyspnea; hoarseness was reported by Mori *et al*^[13]. Thus, tracheal CXPA may not have distinct symptoms. On imaging examination, no calcification could be seen in the previous four cases, but calcification was present in our patient.

The diagnosis of CXPA requires the presence of both the pleomorphic adenoma component and the malignant component. The presence of cohesive clusters of ductal cells, a background of myoepithelial cells, dense fibrillary metachromatic matrix, atypical cells, an abnormal chromatin pattern, and necrosis are essential to make a diagnosis of CXPA. In our patient, benign pleomorphic adenoma-like areas and large malignant cells with pleomorphic and prominent nucleoli were recognized on histopathological examination, confirming the diagnosis. The most common malignant component in CXPA is adenocarcinoma. Other malignant components include adenoid cystic carcinoma, myoepithelial carcinoma, and salivary duct carcinoma, and rarely acinic cell carcinoma, epithelial-myoepithelial carcinoma, basal cell carcinoma, myoepithelial carcinoma, squamous cell carcinoma, and clear cell carcinoma^[14]. In our patient, the malignant component was an adenoid cystic carcinoma. The malignant component in the case reported by Ding *et al*^[10] was an adenocarcinoma, while the type of malignant component was not mentioned in the cases reported by Demirağ *et al*^[11] and Mori *et al*^[13].

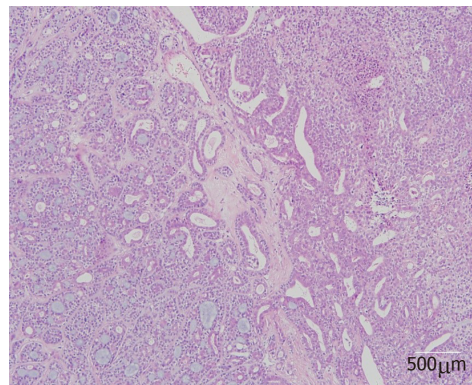


Figure 3 Microscopic examination of the resected specimen showing a biphasic composition with benign histological characteristics suggestive of pleomorphic adenoma and malignant changes in the epithelial components (hematoxylin and eosin).

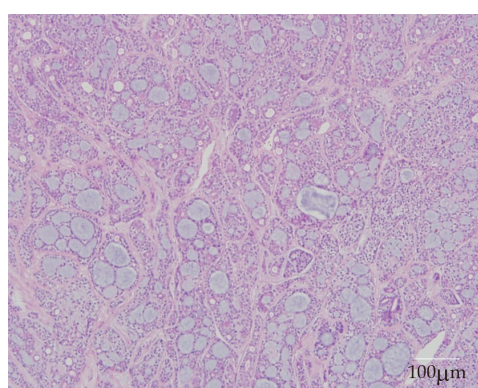
Given the rarity of tracheal CXPA, no standard systemic therapy options have been established. Surgery appears to be the primary treatment modality, and postoperative radiotherapy may be used in patients with poor prognostic factors, such as stage III/IV disease, perineural invasion, and distant metastasis^[15]. Endoscopic resection is simple, convenient, safe, and effective, and is associated with minimal injury and rapid recovery. It is widely applied in the diagnosis and treatment of benign airway stenosis, including that caused by tracheobronchial pleomorphic adenoma^[16]. However, Gaissert *et al*^[17] noted that bronchoscopic resection does not provide confirmation of the resection margins and can leave tumor behind, which leads to tumor recurrence. Studies on the endoscopic resection of tracheal tumors have not provided long-term follow-up data^[18]. In the three previous reports of primary tracheal CXPA, all patients were treated conservatively with complete excision. For our patient, we successfully performed endobronchial resection of the tumor with a high-frequency electrosurgical snare and laser ablation. Demirağ *et al*^[11] and Mori *et al*^[13] performed postoperative radiotherapy for their patients. Postoperative radiotherapy was not performed by Ding *et al*^[10] and in the present case. The necessity and benefits of postoperative radiotherapy remain unclear at present. If distant metastases are present, effective regional radiation in addition to resection may provide meaningful palliation. The three previous patients were free of disease for 3 mo^[9], 16 mo^[12], and 30 mo^[10] after tumor resection. In our patient, the tumor recurred after 11 mo. However, whether bronchoscopic resection and the lack of postoperative radiotherapy led to tumor recurrence in our patient cannot be definitively stated at present.

CONCLUSION

In conclusion, given the rarity of CXPA in the trachea, no standard systemic therapy options have been established. Endoscopic resection is a simple, safe, minimally invasive, and effective method for treating CXPA patients.

Table 1 Clinical features of the four patients with carcinoma ex pleomorphic adenoma of the trachea

Study	Age (yr) / Sex	Tumor location	Size (cm)	Clinical features	Treatment	Follow-up
Ding <i>et al</i> ^[10]	65/M	Posterior tracheal wall	2.2	Chronic obstructive pulmonary disease	Surgical resection	3 mo
Demirağ <i>et al</i> ^[11]	56/M	Approximately 4 cm from the carina	2.5	Dyspnea	Surgical resection and radiotherapy	2.5 yr
Mori <i>et al</i> ^[13]	69/F	On the left side of the trachea	-	Husky voice, dyspnea	Surgical resection and radiotherapy	16 mo
Hemmi <i>et al</i> ^[12]	76/F	Trachea	1.3	Cough, dyspnea	Surgical resection	11 yr
Present study	56/F	Tracheal wall, on the right side	1.8	Progressive dyspnea	High-frequency electrosurgical snare combined with argon plasma coagulation and radiotherapy	10 mo

**Figure 4** Microscopic examination of the resected specimen showing solid nests in a cribriform pattern associated with hyalinized stroma, which is incorporated into the tumor islands and sheets (hematoxylin and eosin).

REFERENCES

- 1 **Di Palma S.** Carcinoma ex pleomorphic adenoma, with particular emphasis on early lesions. *Head Neck Pathol* 2013; **7** Suppl 1: S68-S76 [PMID: [23821206](#) DOI: [10.1007/s12105-013-0454-z](#)]
- 2 **Antony J, Gopalan V, Smith RA, Lam AK.** Carcinoma ex pleomorphic adenoma: a comprehensive review of clinical, pathological and molecular data. *Head Neck Pathol* 2012; **6**: 1-9 [PMID: [21744105](#) DOI: [10.1007/s12105-011-0281-z](#)]
- 3 **Thompson L.** World Health Organization classification of tumours: pathology and genetics of head and neck tumours. *Ear Nose Throat J* 2006; **85**: 74 [PMID: [16579185](#) DOI: [10.1177/014556130608500201](#)]
- 4 **Olsen KD, Lewis JE.** Carcinoma ex pleomorphic adenoma: a clinicopathologic review. *Head Neck* 2001; **23**: 705-712 [PMID: [11505478](#) DOI: [10.1002/hed.1100.abs](#)]
- 5 **Chooback N, Shen Y, Jones M, Kasaian K, Martin M, Ng T, Thomson T, Marra M, Laskin J, Ho C.** Carcinoma ex pleomorphic adenoma: case report and options for systemic therapy. *Curr Oncol* 2017; **24**: e251-e254 [PMID: [28680294](#) DOI: [10.3747/co.24.3588](#)]
- 6 **Kim JW, Kwon GY, Roh JL, Choi SH, Nam SY, Kim SY, Cho KJ.** Carcinoma ex pleomorphic adenoma of the salivary glands: distinct clinicopathologic features and immunoprofiles between subgroups according to cellular differentiation. *J Korean Med Sci* 2011; **26**: 1277-1285 [PMID: [22022178](#) DOI: [10.3346/jkms.2011.26.10.1277](#)]
- 7 **Lewis JE, Olsen KD, Sebo TJ.** Carcinoma ex pleomorphic adenoma: pathologic analysis of 73 cases. *Hum Pathol* 2001; **32**: 596-604 [PMID: [11431714](#) DOI: [10.1053/hupa.2001.25000](#)]
- 8 **Xu J, Wan J, Zhang M.** Primary carcinoma ex pleomorphic adenoma of the bronchus: Report of two cases and review of the literature. *Int J Clin Exp Med* 2017; **10**: 3860-3863
- 9 **Weissferdt A, Moran CA.** Pulmonary salivary gland-type tumors with features of malignant mixed tumor (carcinoma ex pleomorphic adenoma): a clinicopathologic study of five cases. *Am J Clin Pathol* 2011; **136**: 793-798 [PMID: [22031319](#) DOI: [10.1309/AJCP50FBZWSACKIP](#)]
- 10 **Ding CS, Yap WM, Teo CH, Giron D, Chuah KL.** Tracheal carcinoma ex pleomorphic adenoma: a rare tumour with potential problems in diagnosis. *Histopathology* 2007; **51**: 868-871 [PMID: [17916072](#) DOI: [10.1111/j.1365-2559.2007.02865.x](#)]
- 11 **Demirağ F, Topçu S, Kurul C, Memiş L, Altınok T.** Malignant pleomorphic adenoma (malignant mixed tumor) of the trachea: a case report and review of the literature. *Eur Arch Otorhinolaryngol* 2003; **260**: 96-99 [PMID: [12582787](#) DOI: [10.1007/s00405-002-0515-5](#)]
- 12 **Hemmi A, Hiraoka H, Mori Y, Wataya T, Sato H, Jinnai M, Yamaguchi H, Arai Y.** Malignant pleomorphic adenoma (malignant mixed tumor) of the trachea. Report of a case. *Acta Pathol Jpn* 1988; **38**: 1215-1226 [PMID: [2853932](#) DOI: [10.1111/j.1440-1827.1988.tb02393.x](#)]

- 13 **Mori S**, Shinoda M, Hatooka S, Suyama M, Mitsudomi T, Yatabe Y, Nakamura S. [A carcinoma arising from benign pleomorphic adenoma of the trachea]. *Kyobu Geka* 1997; **50**: 602-605 [PMID: [9223872](#)]
- 14 **Scognamiglio T**, Joshi R, Kuhel WI, Tabbara SO, Rezaei MK, Hoda RS. Noninvasive carcinoma ex pleomorphic adenoma of the parotid gland: A difficult diagnosis on fine needle aspiration. *Cytojournal* 2015; **12**: 7 [PMID: [25972908](#) DOI: [10.4103/1742-6413.156080](#)]
- 15 **Zhao J**, Wang J, Yu C, Guo L, Wang K, Liang Z, Lou J. Prognostic factors affecting the clinical outcome of carcinoma ex pleomorphic adenoma in the major salivary gland. *World J Surg Oncol* 2013; **11**: 180 [PMID: [23924064](#) DOI: [10.1186/1477-7819-11-180](#)]
- 16 **Matsubara M**, Yasuo M, Tanabe T, Tsushima K, Urushihata K, Yamamoto H, Hanaoka M, Koizumi T, Fujimoto K, Kubo K, Yamazaki Y, Uehara T. Pleomorphic adenoma with an endobronchial resection. *Intern Med* 2008; **47**: 1117-1120 [PMID: [18552469](#) DOI: [10.2169/internalmedicine.47.0853](#)]
- 17 **Gaissert HA**, Mark EJ. Tracheobronchial gland tumors. *Cancer Control* 2006; **13**: 286-294 [PMID: [17075566](#) DOI: [10.1177/107327480601300406](#)]
- 18 **Okada S**, Yamauchi H, Ishimori S, Satoh S, Sugawara H, Tanaba Y. Endoscopic surgery with a flexible bronchoscope and argon plasma coagulation for tracheobronchial tumors. *J Thorac Cardiovasc Surg* 2001; **121**: 180-182 [PMID: [11135176](#) DOI: [10.1067/mtc.2001.109544](#)]



Published By Baishideng Publishing Group Inc
7041 Koll Center Parkway, Suite 160, Pleasanton, CA 94566, USA
Telephone: +1-925-2238242
Fax: +1-925-2238243
E-mail: bpgoffice@wjgnet.com
Help Desk: <https://www.f6publishing.com/helpdesk>
<https://www.wjgnet.com>

