

World Journal of *Clinical Cases*

World J Clin Cases 2019 September 26; 7(18): 2658-2915



**OPINION REVIEW**

- 2658** Effective use of the Japan Narrow Band Imaging Expert Team classification based on diagnostic performance and confidence level
Hirata D, Kashida H, Iwatate M, Tochio T, Teramoto A, Sano Y, Kudo M

MINIREVIEWS

- 2666** Low fermentable oligosaccharides, disaccharides, monosaccharides, and polyols diet in children
Fodor I, Man SC, Dumitrascu DL
- 2675** High-resolution colonic manometry and its clinical application in patients with colonic dysmotility: A review
Li YW, Yu YJ, Fei F, Zheng MY, Zhang SW

ORIGINAL ARTICLE**Retrospective Study**

- 2687** Predictors of rebleeding and in-hospital mortality in patients with nonvariceal upper digestive bleeding
Lazăr DC, Ursoniu S, Goldiș A
- 2704** Analgesic effect of parecoxib combined with ropivacaine in patients undergoing laparoscopic hepatectomy
Huang SS, Lv WW, Liu YF, Yang SZ
- 2712** Prognostic significance of 14v-lymph node dissection to D2 dissection for lower-third gastric cancer
Zheng C, Gao ZM, Sun AQ, Huang HB, Wang ZN, Li K, Gao S

Observational Study

- 2722** Wall shear stress can improve prediction accuracy for transient ischemic attack
Liu QY, Duan Q, Fu XH, Jiang M, Xia HW, Wan YL

Prospective Study

- 2734** Characterization of microbiota in systemic-onset juvenile idiopathic arthritis with different disease severities
Dong YQ, Wang W, Li J, Ma MS, Zhong LQ, Wei QJ, Song HM

SYSTEMATIC REVIEWS

- 2746** Sinusoidal obstruction syndrome: A systematic review of etiologies, clinical symptoms, and magnetic resonance imaging features
Zhang Y, Jiang HY, Wei Y, Song B

META-ANALYSIS

- 2760** Respiratory training interventions improve health status of heart failure patients: A systematic review and network meta-analysis of randomized controlled trials
Wang MH, Yeh ML

CASE REPORT

- 2776** *Mycobacterium chimaera* infections following cardiac surgery in Treviso Hospital, Italy, from 2016 to 2019: Cases report
Inojosa WO, Giobbia M, Muffato G, Minniti G, Baldasso F, Carniato A, Farina F, Forner G, Rossi MC, Formentini S, Rigoli R, Scotton PG
- 2787** Giant squamous cell carcinoma of the gallbladder: A case report
Junior MAR, Favaro MDL, Santin S, Silva CM, Iamarino APM
- 2794** Liver re-transplantation for donor-derived neuroendocrine tumor: A case report
Mrzljak A, Kocman B, Skrtic A, Furac I, Popic J, Franusic L, Zunec R, Mayer D, Mikulic D
- 2802** Calcifying fibrous tumor originating from the gastrohepatic ligament that mimicked a gastric submucosal tumor: A case report
Kwan BS, Cho DH
- 2808** Pancreatitis, panniculitis, and polyarthritis syndrome caused by pancreatic pseudocyst: A case report
Jo S, Song S
- 2815** Glomus tumor of uncertain malignant potential of the brachial plexus: A case report
Thanindrarn P, Chobpenthai T, Phorkhar T, Nelson SD
- 2823** Conservative pulp treatment for Oehlers type III dens invaginatus: A case report
Lee HN, Chen YK, Chen CH, Huang CY, Su YH, Huang YW, Chuang FH
- 2831** Propofol pump controls nonconvulsive status epilepticus in a hepatic encephalopathy patient: A case report
Hor S, Chen CY, Tsai ST
- 2838** Teriparatide as nonoperative treatment for femoral shaft atrophic nonunion: A case report
Tsai MH, Hu CC
- 2843** Successful repair of acute type A aortic dissection during pregnancy at 16th gestational week with maternal and fetal survival: A case report and review of the literature
Chen SW, Zhong YL, Ge YP, Qiao ZY, Li CN, Zhu JM, Sun LZ
- 2851** Inferior pancreaticoduodenal artery pseudoaneurysm in a patient with calculous cholecystitis: A case report
Xu QD, Gu SG, Liang JH, Zheng SD, Lin ZH, Zhang PD, Yan J

- 2857** ALK-positive anaplastic large cell lymphoma of the thoracic spine occurring in pregnancy: A case report
Yang S, Jiang WM, Yang HL
- 2871** Multiple gastric adenocarcinoma of fundic gland type: A case report
Chen O, Shao ZY, Qiu X, Zhang GP
- 2879** Repair of the portal vein using a hepatic ligamentum teres patch for laparoscopic pancreaticoduodenectomy: A case report
Wei Q, Chen QP, Guan QH, Zhu WT
- 2899** Pleomorphic lipoma in the anterior mediastinum: A case report
Mao YQ, Liu XY, Han Y
- 2905** Guillain-Barré syndrome in a patient with multiple myeloma after bortezomib therapy: A case report
Xu YL, Zhao WH, Tang ZY, Li ZQ, Long Y, Cheng P, Luo J
- 2910** Bowen's disease on the palm: A case report
Yu SR, Zhang JZ, Pu XM, Kang XJ

ABOUT COVER

Editorial Board Member of *World Journal of Clinical Cases*, Shao-Ping Yu, MD, Associate Professor, Chief Doctor, Department of Gastroenterology and Hepatology, Dongguan Kanghua Hospital, Dongguan 523080, Guangdong Province, China

AIMS AND SCOPE

The primary aim of *World Journal of Clinical Cases* (*WJCC*, *World J Clin Cases*) is to provide scholars and readers from various fields of clinical medicine with a platform to publish high-quality clinical research articles and communicate their research findings online.

WJCC mainly publishes case reports, case series, and articles reporting research results and findings obtained in the field of clinical medicine and covering a wide range of topics including diagnostic, therapeutic, and preventive modalities.

INDEXING/ABSTRACTING

The *WJCC* is now indexed in PubMed, PubMed Central, Science Citation Index Expanded (also known as SciSearch®), and Journal Citation Reports/Science Edition. The 2019 Edition of Journal Citation Reports cites the 2018 impact factor for *WJCC* as 1.153 (5-year impact factor: N/A), ranking *WJCC* as 99 among 160 journals in Medicine, General and Internal (quartile in category Q3).

RESPONSIBLE EDITORS FOR THIS ISSUE

Responsible Electronic Editor: Ji-Hong Liu

Proofing Production Department Director: Yun-Xiaoqian Wu

NAME OF JOURNAL

World Journal of Clinical Cases

ISSN

ISSN 2307-8960 (online)

LAUNCH DATE

April 16, 2013

FREQUENCY

Semimonthly

EDITORS-IN-CHIEF

Dennis A Bloomfield, Bao-Gan Peng, Sandro Vento

EDITORIAL BOARD MEMBERS

<https://www.wjgnet.com/2307-8960/editorialboard.htm>

EDITORIAL OFFICE

Jin-Lei Wang, Director

PUBLICATION DATE

September 26, 2019

COPYRIGHT

© 2019 Baishideng Publishing Group Inc

INSTRUCTIONS TO AUTHORS

<https://www.wjgnet.com/bpg/gerinfo/204>

GUIDELINES FOR ETHICS DOCUMENTS

<https://www.wjgnet.com/bpg/GerInfo/287>

GUIDELINES FOR NON-NATIVE SPEAKERS OF ENGLISH

<https://www.wjgnet.com/bpg/gerinfo/240>

PUBLICATION MISCONDUCT

<https://www.wjgnet.com/bpg/gerinfo/208>

ARTICLE PROCESSING CHARGE

<https://www.wjgnet.com/bpg/gerinfo/242>

STEPS FOR SUBMITTING MANUSCRIPTS

<https://www.wjgnet.com/bpg/GerInfo/239>

ONLINE SUBMISSION

<https://www.f6publishing.com>

Observational Study

Wall shear stress can improve prediction accuracy for transient ischemic attack

Qiu-Yun Liu, Qi Duan, Xiao-Hong Fu, Mei Jiang, Hong-Wei Xia, Yong-Lin Wan

ORCID number: Qiu-Yun Liu (0000-0001-9334-7828); Qi Duan (0000-0001-8114-2710); Xiao-Hong Fu (0000-0001-7532-2836); Mei Jiang (0000-0001-2852-347); Hong-Wei Xia (0000-0001-4494-1167); Yong-Lin Wan (0000-0001-3636-2357).

Author contributions: Liu QY, Duan Q, Fu XH, Jiang M, and Xia HW designed the research; Liu QY, Duan Q, Fu XH, and Wan YL performed the research; Liu QY, Duan Q, and Xia HW contributed new analytic tools; Liu QY and Xia HW analyzed the data; and Liu QY, Duan Q, Fu XH, Jiang M, Xia HW, and Wan YL wrote the paper.

Supported by Shanghai Health and Family Planning Commission, No. 201440051; Shanghai Pudong New Area Health and Family Planning Commission, No. PW2016A-19.

Institutional review board

statement: The study was approved by the ethics committee of Naval Military Medical University Affiliated Gongli Hospital.

Informed consent statement: All patients gave informed consent.

Conflict-of-interest statement: The authors declare that they have no competing interests.

Data sharing statement: No additional data are available.

STROBE statement: The authors have read the STROBE Statement, and the manuscript was prepared and revised according to the STROBE Statement.

Qiu-Yun Liu, Xiao-Hong Fu, Hong-Wei Xia, Yong-Lin Wan, Department of Ultrasound, Naval Military Medical University Affiliated Gongli Hospital, Shanghai 200000, China

Qi Duan, Department of Ultrasound, Shanghai Hemujia Hospital, Shanghai 200000, China

Mei Jiang, Department of Neurology, Naval Military Medical University Affiliated Gongli Hospital, Shanghai 200000, China

Corresponding author: Duan Qi, MD, Chief Doctor, Department of Ultrasound, Shanghai Hemujia Hospital, No. 1139, Changning District, Shanghai 200336, China.
chen_qingan@163.com

Telephone: +86-21-22163999

Abstract

BACKGROUND

Early prediction of transient ischemic attack (TIA) has important clinical value. To date, systematic studies on clinical, biochemical, and imaging indicators related to carotid atherosclerosis have been carried out to predict the occurrence of TIA. However, their prediction accuracy is limited.

AIM

To explore the role of combining wall shear stress (WSS) with conventional predictive indicators in improving the accuracy of TIA prediction.

METHODS

A total of 250 patients with atherosclerosis who underwent carotid ultrasonography at Naval Military Medical University Affiliated Gongli Hospital were recruited. Plaque location, plaque properties, stenosis rate, peak systolic velocity, and end diastolic velocity were measured and recorded. The WSS distribution map of the proximal and distal ends of the plaque shoulder was drawn using the shear stress quantitative analysis software, and the average values of WSS were recorded. The laboratory indicators of the subjects were recorded. The patients were followed for 4 years. Patients with TIA were included in a TIA group and the remaining patients were included in a control group. The clinical data, laboratory indicators, and ultrasound characteristics of the two groups were analyzed. Survival curves were plotted by the Kaplan-Meier method. Receiver operating characteristic curves were established to evaluate the accuracy of potential indicators in predicting TIA. Logistic regression model was used to establish combined prediction, and the accuracy of combined predictive indicators for TIA was explored.

Open-Access: This article is an open-access article which was selected by an in-house editor and fully peer-reviewed by external reviewers. It is distributed in accordance with the Creative Commons Attribution Non Commercial (CC BY-NC 4.0) license, which permits others to distribute, remix, adapt, build upon this work non-commercially, and license their derivative works on different terms, provided the original work is properly cited and the use is non-commercial. See: <http://creativecommons.org/licenses/by-nc/4.0/>

Manuscript source: Unsolicited manuscript

Received: May 18, 2019

Peer-review started: May 21, 2019

First decision: July 30, 2019

Revised: August 5, 2019

Accepted: August 20, 2019

Article in press: August 20, 2019

Published online: September 26, 2019

P-Reviewer: Michael JH, Tomiyasu A

S-Editor: Zhang L

L-Editor: Wang TQ

E-Editor: Wu YXJ



RESULTS

The intraclass correlation coefficients of the WSS between the proximal and distal ends of the plaque shoulder were 0.976 and 0.993, respectively, which indicated an excellent agreement. At the end of the follow-up, 30 patients suffered TIA (TIA group) and 204 patients did not (control group). Hypertension ($P = 0.037$), diabetes ($P = 0.026$), homocysteine (Hcy) ($P = 0.022$), fasting blood glucose ($P = 0.034$), plaque properties ($P = 0.000$), luminal stenosis rate ($P = 0.000$), and proximal end WSS ($P = 0.000$) were independent influencing factors for TIA during follow-up. The accuracy of each indicator for predicting TIA individually was not high (area under the curve [AUC] < 0.9). The accuracy of the combined indicator including WSS (AUC = 0.944) was significantly higher than that of the combined indicator without WSS (AUC = 0.856) in predicting TIA ($z = 2.177$, $P = 0.030$). The sensitivity and specificity of the combined indicator including WSS were 86.67% and 92.16%, respectively.

CONCLUSION

WSS at plaque surface combined with hypertension, diabetes, Hcy, blood glucose, plaque properties, and stenosis rate can significantly improve the accuracy of predicting TIA.

Key words: Transient ischemic attack; Acute ischemic stroke; Wall shear stress; Atherosclerosis; Plaque

©The Author(s) 2019. Published by Baishideng Publishing Group Inc. All rights reserved.

Core tip: Early prediction of transient ischemic attack (TIA) is of great importance. However, the accuracy of the predicted methods including clinical, biochemical, and imaging indicators related to carotid atherosclerosis is limited. The purpose of this study was to explore the role of combining wall shear stress (WSS) with conventional predictive indicators in improving the accuracy of TIA prediction. Our study indicated that the WSS at plaque surface combined with traditional indicators such as hypertension, diabetes, Hcy, blood glucose, plaque properties, and stenosis rate can significantly improve the accuracy of predicting TIA.

Citation: Liu QY, Duan Q, Fu XH, Jiang M, Xia HW, Wan YL. Wall shear stress can improve prediction accuracy for transient ischemic attack. *World J Clin Cases* 2019; 7(18): 2722-2733

URL: <https://www.wjgnet.com/2307-8960/full/v7/i18/2722.htm>

DOI: <https://dx.doi.org/10.12998/wjcc.v7.i18.2722>

INTRODUCTION

Acute ischemic stroke (AIS) is the primary cause of permanent disability in elderly people. The characteristics of AIS are high incidence, high disability rate, and high recurrence rate^[1-3]. It is the second leading cause of death after cardiovascular disease^[4,5]. It is of great clinical significance to predict AIS in an early stage in order to take action to prevent or minimize its harm to patients^[6-8]. Transient ischemic attack (TIA) is a high-risk factor for AIS. It needs to be actively treated to stabilize the disease and prevent the occurrence of AIS. Carotid atherosclerosis is known to be the most important cause of TIA, and the degree of atherosclerosis and microthrombus caused by unstable plaque rupture are closely related to the occurrence of TIA^[9-11]. To date, systematic studies have been carried out on clinical, biochemical, and ultrasonic indicators related to carotid atherosclerosis to predict the occurrence of TIA, even AIS^[12-14]. However, due to individual factors and the influence of different environments, the occurrence of TIA is still not accurately predicted in clinical practice, and its prediction accuracy needs to be further improved. With advances in ultrasound technology, recent studies have reported that wall shear stress (WSS) in blood vessel walls is one of the important factors affecting atherosclerosis^[15-17]. WSS is the tangential friction of blood flowing on the surface of blood vessel walls acting on arterial endothelial cells^[18]. Studies have revealed that a decrease in WSS can increase the intima-medium thickness of the carotid artery and induces carotid atherosclerosis. An increase in WSS on the surface of plaque can cause plaque rupture and induce

TIA^[19,20]. Based on these studies, the present study performed a 4-year follow-up and recorded clinical, biochemical, and ultrasound indicators of the carotid atherosclerotic plaque and the WSS of plaque surface. The aim of this study was to investigate the improving effect of combining WSS with conventional predictive indicators in TIA prediction.

MATERIALS AND METHODS

Subjects

From December 2013 to December 2018, 250 patients with atherosclerosis who underwent carotid ultrasonography at Naval Military Medical University Affiliated Gongli Hospital were recruited. The inclusion criteria were as follows: (1) Plaque-induced area stenosis $\geq 30\%$; (2) Age > 18 years; and (3) No TIA history. Patients with a hemodynamically altered disease were excluded. The age, gender, family history, comorbidities (hypertension, diabetes, and hypercholesterolemia), smoking, and alcohol abuse in all patients were recorded. All subjects provided informed consent for this study. This study was approved by the Ethics Committee of Naval Military Medical University Affiliated Gongli Hospital and registered at the China Clinical Trial Registration Center (ChiCTR-OON-14005359).

Instruments and methods

Ultrasound examination: Patients were examined using a PHILIPS iu22 ultrasound system with an L9-3 line array probe. The patient was placed in a supine position to fully expose the neck during the examination. After the carotid plaque was detected, the plaque location (internal carotid artery, common carotid artery, or carotid sinus) was recorded. The plaque property (hard plaque, soft plaque, or mixed plaque) was determined according to the echo. The thickness of the plaque protruding into the lumen and the degree of carotid lumen stenosis were calculated. Doppler was turned on to observe the blood flow at the plaque surface, and peak systolic velocity (PSV) and end diastolic velocity (EDV) (cm/s) were recorded. The blood flow dynamic map was saved for post-processing analysis.

Analysis of the WSS distribution at carotid plaque: The Doppler blood flow dynamic maps were analyzed offline by two experienced sonographers using the shear stress quantitative analysis software (Software copyright registration: No. 2011SR089671). The WSS distribution of the proximal and distal ends of the plaque shoulder (the junction of the plaque and the normal carotid endothelium) was drawn, and the mean WSS values at this area were recorded. The shear stress quantitative analysis software can automatically generate the two-dimensional and three-dimensional WSS spatial distribution maps at the surface of the carotid plaque, and automatically calculate mean WSS value. The software represents the WSS value in color brightness. The brighter the color, the higher the WSS. The X and Y coordinates of the three-dimensional WSS spatial distribution map are in pixels, and the Z coordinate is in units of dyne/cm^2 . The X axis represents the length of the blood vessel, the Y axis represents the diameter of the blood vessel, and the Z axis represents the value of the WSS. The WSS is displayed in the form of amplitude on the three-dimensional WSS spatial distribution map (Figure 1)^[21].

Laboratory examination: Fasting venous blood samples were taken 12 h after fasting, and direct bilirubin, total bilirubin, uric acid, fasting blood glucose (FBG), homocysteine (Hcy), blood lipids (including total cholesterol, triglyceride, high density lipoprotein cholesterol, and low density lipoprotein cholesterol) were determined using an automatic biochemical analyzer.

Follow-up

All patients enrolled in the study were followed for 4 years and an ultrasound examination was performed every 3 mo. TIA was defined as the endpoint event during patient follow-up. A patient's refusal to examination or a midway withdrawal was defined as loss to follow-up. Based on the follow-up results, patients with endpoint events were included in a TIA group, and the remaining patients were included in a control group. The clinical data, laboratory indicators, and ultrasound characteristics of the two groups were analyzed.

Statistical methods

Analyses were performed using Statistical Product and Service Solutions (SPSS 19.0) software. Measurement data are expressed as the mean \pm standard deviation, and comparisons were performed using an independent sample *t*-test. Count data are

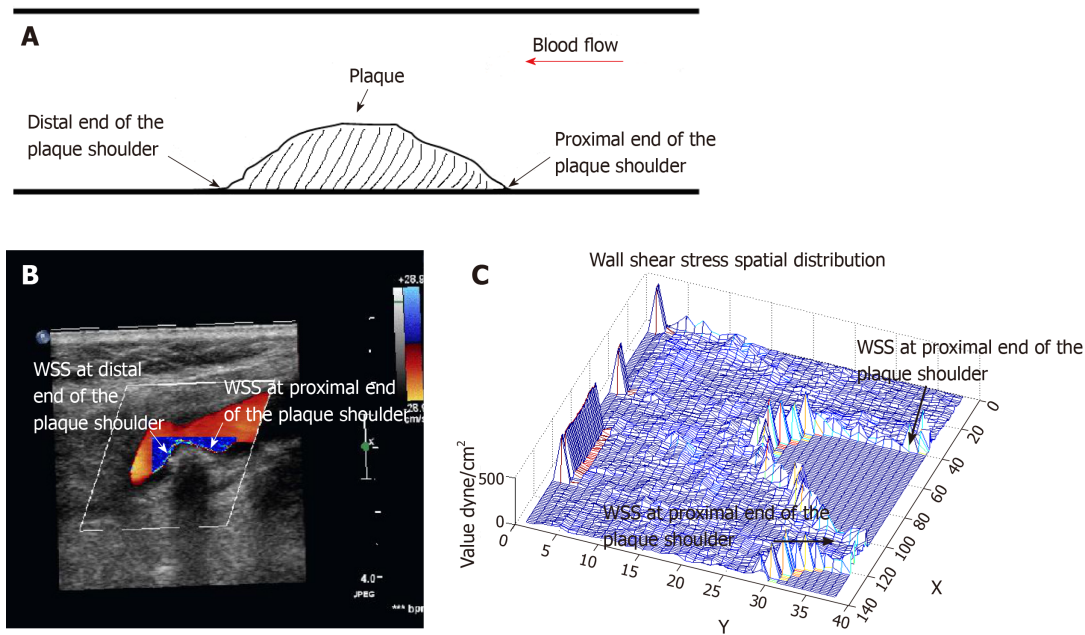


Figure 1 Wall shear stress at the carotid plaque plotted with the shear stress quantitative analysis software. A: Schematic representation of the proximal and distal end of the carotid plaque; B: Wall shear stress (WSS) spatial distribution map at the carotid plaque shoulder plotted with the shear stress quantitative analysis software; C: WSS three-dimensional spatial distribution at the carotid plaque shoulder plotted with the shear stress quantitative analysis software.

expressed in cases (percentages), and the chi-square test and Fisher's exact probability method were used for comparison. Repeated tests were performed on WSS calculated by two sonographers using Bland-Altman analysis and intraclass correlation coefficient (ICC). An $ICC > 0.75$ indicates good repeatability, $0.4 < ICC \leq 0.75$ indicates repetitiveness, and $ICC \leq 0.4$ indicates poor repeatability. Survival curves were plotted by the Kaplan-Meier method. The independent influencing factors that have a significant impact on the occurrence of AIS were analyzed using multivariate COX regression. Receiver operating characteristic (ROC) curves were established to evaluate the accuracy of potential indicators for predicting TIA. Logistic regression model was used to establish combined prediction, and the accuracy of combined predictive indicators for TIA was explored. The difference was considered statistically significant at $P < 0.05$.

RESULTS

WSS distribution at the plaque displayed with the shear stress quantitative analysis software

The shear stress quantitative analysis software successfully analyzed the WSS distribution at the proximal and distal ends of the carotid plaque shoulder in all patients with atherosclerosis. Typical images are shown in Figure 2. Figure 2A is a Doppler blood flow map of the internal carotid artery plaque, in which the blood flow near the carotid plaque can be visually observed. Figure 2B is a WSS distribution map at the carotid plaque, in which the WSS distribution at different locations near the carotid plaque can be visually observed. It could be found that the WSS color of the proximal end of the plaque shoulder was bright, and the color of the distal end was dim, suggesting that the WSS at the proximal end was higher than that of the distal end. Figure 2C is a three-dimensional WSS spatial distribution map. It can be found that the value of the Z-axis at the proximal end was significantly higher than that of the distal end, suggesting that the WSS at the proximal end of the shoulder was higher than that of the distal end.

WSS consistency analysis

In order to evaluate the error of two sonographers in detecting WSS, this study utilized the Bland-Altman method to test the consistency of WSS at the proximal and distal ends of the plaque shoulder. The consistency analysis of WSS by two sonographers found that the mean difference between the WSS observers of the proximal end plaque shoulder was 0 dyne/cm², and the 95% consistency range was between -1.1 and 1.2. The ICC result was 0.976, which indicated that the agreement

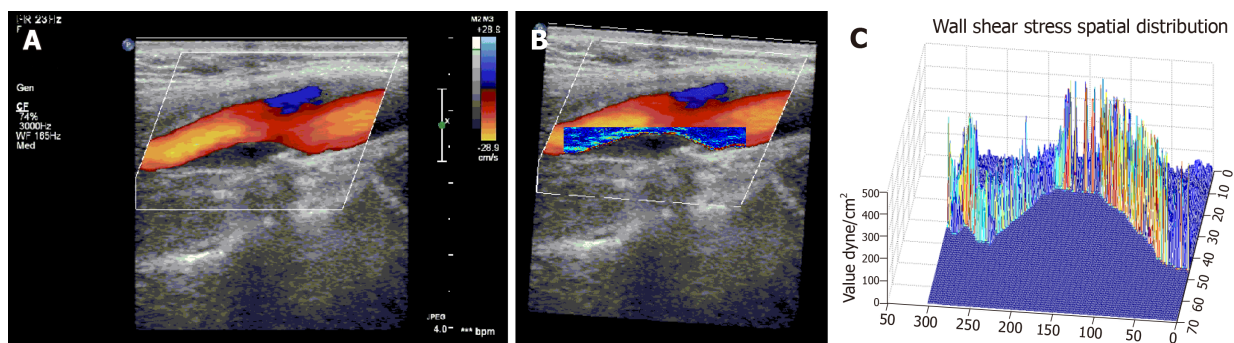


Figure 2 Wall shear stress distribution at the plaque generated with the shear stress quantitative analysis software. The patient in the figure was a 52-year-old woman. Ultrasound examination showed mixed plaque in the internal carotid artery. The stenosis degree in the internal carotid artery was 35%. A: Color Doppler blood flow pattern at the internal carotid artery plaque; B: Two-dimensional wall shear stress (WSS) spatial distribution at the internal carotid artery plaque; C: Three-dimensional WSS spatial distribution at the internal carotid artery plaque.

was excellent (Figure 3A). The mean difference between the WSS observers of the distal end plaque shoulder was 0.01 dyne/cm², and the 95% consistency range was between -0.41 and 0.38. The ICC result was 0.993, which indicated that the agreement was excellent (Figure 3B).

Patient follow-up results

At the end of follow-up, 16 patients were lost to follow-up. Totally 204 patients did not develop TIA (control group) at the end of follow-up, and 30 patients developed TIA (TIA group). The Kaplan-Meier survival curve showed that the number of TIA cases increased over time, and the incidence of TIA was 15.2% (Figure 4).

Comparison of clinical data and laboratory indicators between the TIA group and control group

The blood pressure, diabetes, Hcy, and FBG in the TIA group were significantly higher than those in the control group ($P < 0.05$). The remaining clinical data and laboratory indicators between the two groups were similar ($P > 0.05$) (Table 1).

Comparison of ultrasound characteristics and WSS data between the TIA group and control group

The soft plaque ratio, stenosis rate, proximal end WSS, and distal end WSS were significantly higher in the observation group than in the control group ($P < 0.05$). The data of plaque location, PSV, and EDV were similar between the two groups ($P > 0.05$) (Table 2).

COX multivariate analysis of TIA during follow-up of patients with atherosclerosis

Multivariate COX regression analysis was further performed to compare the differences between the TIA group and the control group. The results showed that the effect of distal end WSS on TIA was not significant ($P > 0.05$). Hypertension ($P = 0.037$), diabetes ($P = 0.026$), Hcy ($P = 0.022$), FBG ($P = 0.034$), plaque properties ($P = 0.000$), lumen stenosis rate ($P = 0.000$), and proximal end WSS ($P = 0.000$) were independent factors affecting TIA during patient follow-up (Table 3).

ROC curve analysis of potential indicators predicting TIA

ROC curve analysis was performed to further assess the value of FBG, Hcy, lumen stenosis rate, and proximal end WSS in predicting TIA. The accuracy of each indicator for predicting TIA individually was not high (area under the curve [AUC] < 0.9). The prediction accuracy of proximal end WSS was the highest, with an AUC of 0.884 and a specificity of 95.51%, but the sensitivity was low (73.33%). The AUCs of lumen stenosis rate, Hcy, and FBG were significantly lower than that of proximal end WSS ($P < 0.05$) (Table 4 and Figure 5).

Comparison of TIA prediction accuracy between the combined indicator with WSS and combined indicator without WSS

This study combined hypertension, diabetes, Hcy, FBG, plaque properties, lumen stenosis rate, and proximal end WSS based on a Logistic regression model, and compared the TIA prediction accuracy between the combined indicator with WSS and combined indicator without WSS. The results showed that the accuracy of the combined indicator with WSS (AUC = 0.944, 95%CI = 0.907-0.970) was higher than that of the combined indicator without WSS (AUC = 0.856, 95%CI = 0.805-0.899), and

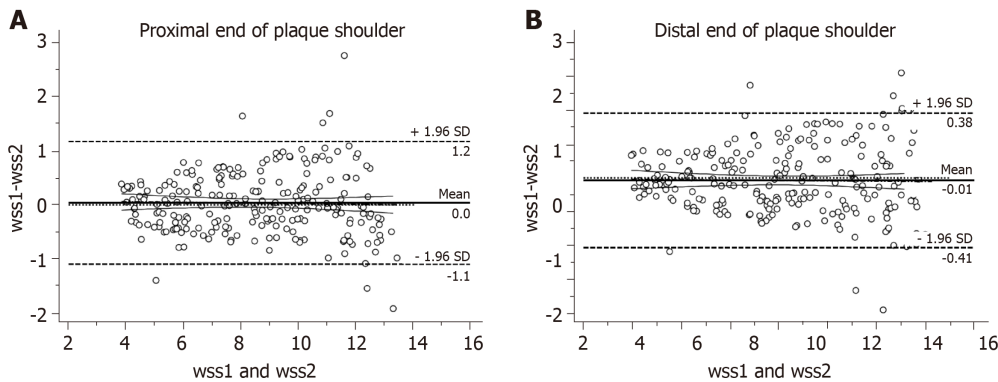


Figure 3 Bland-Altman analysis of wall shear stress by two sonographers. A: Consistency analysis of wall shear stress (WSS) at the proximal end of the plaque shoulder; B: Consistency analysis of WSS at the distal end of the plaque shoulder.

the difference was statistically significant ($z = 2.177$, $P = 0.030$). The sensitivity and specificity of the combined indicator with WSS were 86.67% and 92.16%, respectively (Figure 6).

DISCUSSION

AIS is an important cause of disability and death in humans. Although the prognosis of AIS has been greatly improved with the development of diagnosis and treatment techniques, the course of most patients cannot be reversed. Therefore, early prediction of high-risk people and early intervention is the best way to reduce the incidence of AIS. TIA is known to be one of the important risk factors for AIS. Studies have reported that the probability of stroke at 2, 7, 30, and 90 d after TIA was 3.5%, 5.2%, 8.0%, and 9.2%, respectively. If treated promptly, the risk of stroke at 90 d after TIA can be reduced to 1% to 3%^[22-24]. Therefore, early diagnosis and individualized treatment of TIA patients are necessary to prevent the occurrence of AIS. TIA can be predicted clinically by biochemical indicators related to carotid atherosclerosis, such as blood pressure, FBG, Hcy, and ultrasound imaging indicators such as plaque properties and lumen stenosis rate. However, because different patients are affected by their individual factors and external environment, the prediction accuracy of these indicators is not satisfactory, hence the occurrence of TIA cannot be accurately predicted. There are still a large number of TIA patients in clinical practice. Therefore, in order to improve the accuracy of prediction, we need more targeted indicators to predict the development of TIA.

WSS is defined as the tangential friction of blood flowing on the surface of blood vessel walls acting on arterial endothelial cells. In the research of Corban *et al*^[25], decreased WSS promoted the increase of carotid intima-media thickness and induced carotid atherosclerosis. Besides, increased WSS on the plaque surface was more prone to plaque rupture and could be a useful tool for the risk assessment of carotid plaque rupture, which was reported by Hung *et al*^[26]. After plaque rupture, the ulcer is likely to form a microthrombus. Microthrombus can cause cerebral artery occlusion if it flows to the distal blood vessel, triggering TIA and even AIS. Therefore, the higher the WSS of the carotid plaque, the more likely it is to cause TIA. At present, researchers use ultrasound to detect blood vessel inner diameter and blood flow velocity, and calculate WSS according to Hagen-Poiseuille formula. But it is a simplified formula based on ideal state fluid, and is not suitable for the complex WSS calculation at carotid plaque.

The shear stress quantitative analysis software used in this study can quantitatively observe the distribution of WSS near the carotid plaque. The WSS distribution at the carotid plaque showed that the WSS color of the proximal end of the plaque shoulder was bright, and the color of the distal end of the plaque shoulder was dim, suggesting that the WSS of the proximal end of the plaque shoulder was higher than that of the distal end. From the three-dimensional WSS spatial distribution map, it could be observed that the value of the Z-axis of the proximal end of the plaque shoulder was significantly higher than that of the distal end, suggesting that the WSS of the proximal end of the plaque shoulder was higher than that of the distal end. Furthermore, according to the consistency analysis, the detection using our software was very consistent with different observers. Data acquisition was very stable, and could be widely used clinically.

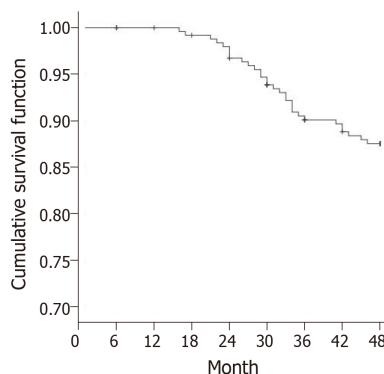


Figure 4 Transient ischemic attack occurrence during follow-up in patients with atherosclerosis (Kaplan-Meier method).

To study the indicators that can improve the accuracy of predicting TIA, this study conducted a 4-year follow-up survey of 250 patients with carotid plaque but did not develop TIA. The results showed that the number of TIA cases increased gradually over time, and the incidence of TIA was 15.2%, which is in line with the research by Borné *et al*^[27]. Although in this study, patients with carotid plaque received routine treatment interventions according to clinical guidelines, the data revealed that there was still a certain incidence of TIA, which confirmed the importance of early prediction and early intervention for TIA.

The incidence of TIA is affected by multiple factors, such as hypertension, diabetes, hyperlipidemia, and smoking. It is still uncertain how different risk factors affect the incidence of TIA^[28]. By comparing the TIA group with the control group, a total of eight factors were significantly associated with TIA, including hypertension, diabetes, Hcy, FBG, soft plaque ratio, lumen stenosis rate, proximal end WSS, and distal end WSS. After COX multivariate analysis, hypertension, diabetes, Hcy, FBG, plaque property, lumen stenosis rate, and proximal end WSS were found to be independent factors influencing TIA during follow-up. Hypertension, diabetes, and Hcy are all clinically common risk factors. Hypertension easily stimulates plaque on the intima of the cerebral arteries to cause rupture^[29]. The pathogenesis of TIA caused by diabetes is related to saccharification and peroxidation, vascular endothelial cell damage, platelet aggregation, and insulin resistance^[30]. The mechanism of high Hcy-induced TIA involves three aspects including blood vessel wall, platelets, and coagulation factors^[31]. However, the data of this study suggested that the effects of hypertension, diabetes, and Hcy on TIA were lower than those of other indicators. This may be related to the fact that they are indicators of systemic status, which are less targeted and were controlled with antihypertensive drugs and hypoglycemic agents.

Compared with hypertension, diabetes, and Hcy, indicators that directly describe plaque morphology and stability, such as plaque property, lumen stenosis rate, and proximal end WSS, had a greater impact on TIA. Because the larger the plaque volume, the higher the lumen stenosis, and the greater the likelihood that the vascular occlusion will cause TIA. The soft plaque is very unstable, which is easy to rupture so that platelets activate and adhere to form a thrombus. As the most important indicator of this study, the impact of WSS on TIA is very obvious, and the proximal end WSS of the plaque shoulder is more important than the distal end WSS. This is because the proximal end WSS of the plaque shoulder is significantly higher than the distal end WSS^[32], while high WSS is more likely to cause plaque rupture. Hence, the proximal end of the plaque shoulder is more likely to rupture and trigger TIA.

In this study, ROC curves were used to further analyze the value of FBG, Hcy, lumen stenosis rate, and proximal end WSS for predicting TIA. The results showed that the accuracy of each indicator was not high (each AUC < 0.9). Of them, the prediction accuracy of proximal end WSS was the highest, and its AUC reached 0.884. This finding suggested that it is difficult to accurately predict TIA based on a single indicator. Therefore, the traditional risk factors such as hypertension and diabetes are not accurate, and they can only predict that TIA is more likely to occur. Subsequently, we performed a prediction by combining hypertension, diabetes, Hcy, blood glucose, plaque property, lumen stenosis rate, and proximal end WSS based on a logistic regression model, and then compared the accuracy between the combined prediction with proximal end WSS and the combined prediction without proximal end WSS. It revealed that when proximal end WSS was not included, the AUC of the combined indicator was higher compared with the individual indicators, but it still did not

Table 1 Comparison of clinical data and laboratory indicators between the two groups, *n* (%)

	TIA Group (<i>n</i> = 30)	Control Group (<i>n</i> = 204)	<i>t</i> / <i>X</i> ² Value	<i>P</i> -value
Age	70.71 ± 10.92	65.93 ± 18.09	1.408	0.160
Gender (Male/Female)	18/12	126/78	0.034	0.853
Family history	4 (13.33)	21 (10.29%)	-	0.539 ¹
Hypertension	30 (100)	178 (87.25)	4.301	0.038
Diabetes	22 (73.33)	104 (50.98)	5.258	0.022
Hypercholesterolemia	10 (33.33)	69 (33.82)	0.003	0.958
Smoking	14 (46.67)	104 (50.98)	0.195	0.659
Alcoholism	4 (13.33)	21 (10.29)	-	0.539 ¹
DBIT (μmol/L)	4.19 ± 1.08	3.98 ± 1.43	0.772	0.441
TBIL (μmol/L)	10.96 ± 3.96	9.77 ± 3.28	1.805	0.072
UA (mmol/L)	329.34 ± 84.39	337.09 ± 87.18	0.456	0.649
TG (mmol/L)	1.18 ± 0.43	1.15 ± 0.47	0.330	0.742
TC (mmol/L)	4.46 ± 1.20	4.29 ± 1.09	0.787	0.432
HDL-C (mmol/L)	1.17 ± 0.32	1.22 ± 0.34	0.757	0.459
LDL-C (mmol/L)	3.04 ± 0.95	2.89 ± 0.87	0.871	0.384
Hcy (μmol/L)	8.37 ± 2.76	7.29 ± 2.27	2.364	0.019
FBG (mmol/L)	6.97 ± 2.89	5.84 ± 2.58	2.205	0.028

¹indicated Fisher's exact probability method. DBIT: Direct bilirubin; TBIL: Total bilirubin; UA: Uric acid; TG: Triglyceride; TC: Total cholesterol; HDL-C: High density lipoprotein cholesterol; LDL-C: Low density lipoprotein cholesterol; Hcy: Homocysteine; FBG: Fasting blood glucose.

exceed 0.9. It indicated that the combination without proximal end WSS was still limited although the accuracy was higher than the individual indicators. However, the AUC of the combined prediction with proximal end WSS exceeded 0.9, and the sensitivity and specificity were satisfactory compared to the combined prediction without proximal end WSS. Therefore, we believe that WSS as an indicator of the blood flow environment near the plaque has an important role in predicting TIA, and the prediction accuracy of TIA will be significantly improved if including WSS.

There are certain deficiencies in this study. Patients with large plaques and high stenosis may be treated aggressively, and some patients with hypertension and hyperglycemia may take medicine for a long time. Therefore, the effects of various risk factors on patients are inevitably different. Further studies are suggested to perform on experimental animals. Animal experiments are more controllable, which can reduce unnecessary external environmental interference and improve the experimental accuracy.

In conclusion, WSS at the surface of carotid plaque can be used as an excellent indicator for predicting TIA. It is safe, non-invasive, and accurate. And the traditional indicators combined with WSS can significantly improve the prediction accuracy for TIA, which has great clinical significance for the early diagnosis of TIA.

Table 2 Comparison of ultrasound characteristics and wall shear stress data between the two groups

		TIA Group (n = 30)	Control Group (n = 204)	t/X ² Value	P-value
Plaque location	Common carotid artery	8	51	0.046	0.977
	Carotid sinus	18	124		
	Internal carotid artery	4	29		
Plaque property	Hard plaque	9	104	6.062	0.048
	Soft plaque	14	54		
	Mixed plaque	7	46		
Lumen stenosis rate (%)		58.26 ± 13.28	44.29 ± 21.82	3.411	0.001
PSV (cm/s)		90.34 ± 9.23	87.12 ± 9.42	1.753	0.081
EDV (cm/s)		17.24 ± 5.12	15.93 ± 3.82	1.673	0.096
Proximal end WSS (dyne/cm ²)		9.15 ± 2.27	7.29 ± 3.86	6.720	0.000
Distal end WSS (dyne/cm ²)		7.42 ± 1.95	6.39 ± 1.74	2.980	0.003

PSV: Peak systolic velocity; EDV: End diastolic velocity; WSS: Wall shear stress.

Table 3 COX multivariate analysis of transient ischemic attack in patients with atherosclerosis during follow-up

	B	SE	Wald	P-value	RR	95%CI	
						Lower limit	Upper limit
Hypertension	1.365	0.293	2.813	0.037	3.914	2.204	6.951
Diabetes	1.462	0.428	3.792	0.026	4.316	1.865	9.986
Hcy	0.492	0.245	3.988	0.022	1.635	1.012	2.643
FBG	0.390	0.176	2.918	0.034	1.477	1.046	2.085
Plaque property	1.786	0.496	7.294	0.000	5.968	2.257	15.777
Lumen stenosis rate (%)	1.675	0.328	6.028	0.000	5.337	2.806	10.151
Proximal end WSS (dyne/cm ²)	0.783	0.272	5.885	0.000	2.187	1.283	3.727
Distal end WSS (dyne/cm ²)	0.459	0.482	1.125	0.192	1.582	0.615	4.069

Hcy: Homocysteine; FBG: Fasting blood glucose; WSS: Wall shear stress.

Table 4 ROC curve analysis of potential indicators for predicting TIA

	AUC	95%CI	Cutoff point	Sensitivity (%)	Specificity (%)
FBG	0.726	0.664-0.782	6.23	66.67	68.14
Hcy	0.711	0.648-0.768	7.65	90.00	42.16
Lumen stenosis rate	0.832	0.778-0.877	62.01	96.67	54.41
proximal end WSS	0.884	0.831-0.917	8.05	73.33	95.51

FBG: Fasting blood glucose; Hcy: Homocysteine; WSS: Wall shear stress.

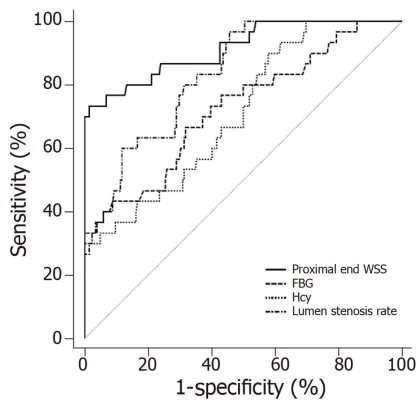


Figure 5 Receiver operating characteristic curve analysis of potential indicators for predicting transient ischemic attack individually.

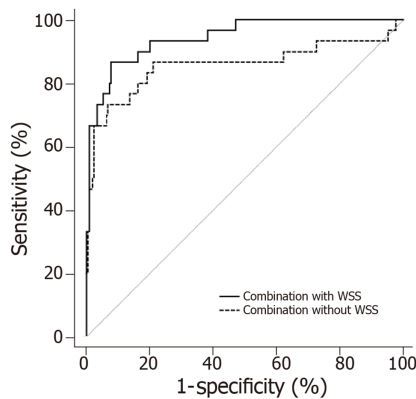


Figure 6 Receiver operating characteristic curves of combined indicator with wall shear stress vs combined indicator without wall shear stress.

ARTICLE HIGHLIGHTS

Research background

Transient ischemic attack (TIA) is a common cause of acute ischemic stroke (AIS), and its early prediction is of great clinical significance for the prevention of AIS. Carotid atherosclerosis is known to be the most important cause of TIA. So far, some biochemical indexes related to carotid atherosclerosis, such as blood pressure, blood glucose, and Hcy and ultrasound imaging indicators including plaque property and lumen stenosis rate are the risk factors for TIA. However, the accuracy of their predictions of TIA is limited.

Research motivation

Wall shear stress (WSS) is defined as the tangential friction of blood flowing on the surface of blood vessel walls acting on arterial endothelial cells. Recent studies have found that increased WSS on the plaque surface is more prone to plaque rupture. After plaque rupture, the ulcer is likely to form a microthrombus, which may block distal blood vessels and cause TIA. Therefore, the higher the WSS of carotid plaques, the more likely it is to cause TIA. However, it is uncertain whether WSS can improve the accuracy of predicting the occurrence of TIA.

Research objectives

In this study, we analyzed the routine indicators and WSS data of patients with atherosclerosis. The aim of our study was to investigate the improving effect of combining WSS with conventional predictive indicators in TIA prediction.

Research methods

A total of 250 patients with atherosclerosis were recruited. The laboratory indexes and imaging indexes of the patients were measured and recorded. The WSS distribution maps of the proximal and distal ends of the plaque shoulder were drawn using the shear stress quantitative analysis software, and the average values of WSS were recorded. The patients were followed for 4 years, and patients with TIA were included in a TIA group and the remaining patients were included in a control group. ROC curves were used to assess the accuracy of potential indicators in predicting TIA, and Logistic regression model was used to establish a combined prediction and explore its accuracy for predicting TIA.

Research results

The WSS between the proximal and distal ends of the plaque shoulder indicated an excellent agreement (ICC = 0.976 and 0.993, respectively). Besides, the WSS at the proximal end of the shoulder was significantly higher than that of the distal end ($P < 0.05$). According to the results of follow-up, patients with atherosclerosis were divided into a TIA group ($n = 30$) and a control group ($n = 204$). After COX multivariate analysis, hypertension, diabetes, homocysteine (Hcy), FBG, plaque property, lumen stenosis rate, and proximal end WSS were found to be independent factors influencing TIA during follow-up ($P < 0.05$). Among them, the proximal end WSS had the highest accuracy in predicting TIA, but its AUC was still less than 0.9. The Logistic regression results showed that the accuracy of the combination with WSS (AUC = 0.944) was significantly higher than that of the combination without WSS (AUC = 0.856) in predicting TIA ($z = 2.177$, $P = 0.030$). It is suggested that the traditional indexes combined with WSS can significantly improve the accuracy of TIA prediction.

Research conclusions

WSS plays an important role in predicting TIA. WSS at plaque surface combined with hypertension, diabetes, Hcy, blood glucose, plaque properties, and stenosis rate can significantly improve the accuracy of TIA prediction.

Research perspectives

In order to avoid the interference caused by the differences of individual and environmental factors among different patients, an animal experiment should be performed to explore if WSS can improve the accuracy of TIA prediction. Animal experiments are more controllable, which can reduce unnecessary external environmental interference and improve the accuracy. Therefore, the effect of the combination of the conventional prediction indexes and WSS in predicting TIA is expected to be further revealed by animal experiments.

REFERENCES

- 1 Lim HS, Kim SM, Kang DW. Quantitative Predictive Models for the Degree of Disability After Acute Ischemic Stroke. *J Clin Pharmacol* 2018; **58**: 549-557 [PMID: 29194662 DOI: 10.1002/jcph.1039]
- 2 Zheng L, Cheng W, Wang X, Yang Z, Zhou X, Pan C. Overexpression of MicroRNA-145 Ameliorates Astrocyte Injury by Targeting Aquaporin 4 in Cerebral Ischemic Stroke. *Biomed Res Int* 2017; **2017**: 9530951 [PMID: 29057271 DOI: 10.1155/2017/9530951]
- 3 Li L, Zhang LH, Xu WP, Hu JM. Risk assessment of ischemic stroke associated pneumonia. *World J Emerg Med* 2014; **5**: 209-213 [PMID: 25225586 DOI: 10.5847/wjem.j.1920-8642.2014.03.009]
- 4 Kim J, Fann DY, Seet RC, Jo DG, Mattson MP, Arumugam TV. Phytochemicals in Ischemic Stroke. *Neuromolecular Med* 2016; **18**: 283-305 [PMID: 27193940 DOI: 10.1007/s12017-016-8403-0]
- 5 Du EHY, Shankar JJS. Rapid Endovascular Treatment of Acute Ischemic Stroke: What a General Radiologist Should Know. *Can Assoc Radiol J* 2017; **68**: 154-160 [PMID: 28131334 DOI: 10.1016/j.carj.2016.10.002]
- 6 Zhang C, Wang Y, Zhao X, Liu L, Wang C, Pu Y, Zou X, Pan Y, Wong KS, Wang Y; Chinese IntraCranial AtheroSclerosis (CICAS) Study Group. Prediction of Recurrent Stroke or Transient Ischemic Attack After Noncardiogenic Posterior Circulation Ischemic Stroke. *Stroke* 2017; **48**: 1835-1841 [PMID: 28626054 DOI: 10.1161/STROKEAHA.116.016285]
- 7 Shahid F, Shantsila E, Lip GY. Recent advances in the understanding and management of atrial fibrillation: a focus on stroke prevention. *F1000Res* 2016; **5**: 2887 [PMID: 28105320 DOI: 10.12688/f1000research.10176.1]
- 8 Shahid F, Lip GYH. Risk Stratification Models in Atrial Fibrillation. *Semin Thromb Hemost* 2017; **43**: 505-513 [PMID: 28129663 DOI: 10.1055/s-0036-1597285]
- 9 Ghasemi M, Nolan DR, Lally C. An investigation into the role of different constituents in damage accumulation in arterial tissue and constitutive model development. *Biomech Model Mechanobiol* 2018; **17**: 1757-1769 [PMID: 30058051 DOI: 10.1007/s10237-018-1054-3]
- 10 Hoshino M, Shimizu T, Ogura H, Hagiwara Y, Takao N, Soga K, Usuki N, Moriya J, Nakamura H, Hasegawa Y. Intraplaque Microvascular Flow Signal in Superb Microvascular Imaging and Magnetic Resonance Imaging Carotid Plaque Imaging in Patients with Atheromatous Carotid Artery Stenosis. *J Stroke Cerebrovasc Dis* 2018; **27**: 3529-3534 [PMID: 30197167 DOI: 10.1016/j.jstrokecerebrovasdis.2018.08.017]
- 11 Magenta A, Sileno S, D'Agostino M, Persiani F, Beji S, Paolini A, Camilli D, Platone A, Capogrossi MC, Furgiuele S. Atherosclerotic plaque instability in carotid arteries: miR-200c as a promising biomarker. *Clin Sci (Lond)* 2018; **132**: 2423-2436 [PMID: 30389857 DOI: 10.1042/CS20180684]
- 12 Kim Y, Faysel M, Balucani C, Yu D, Gilles N, Levine SR. Ischemic Stroke Predictors in Patients Presenting with Dizziness, Imbalance, and Vertigo. *J Stroke Cerebrovasc Dis* 2018; **27**: 3419-3424 [PMID: 30206000 DOI: 10.1016/j.jstrokecerebrovasdis.2018.08.002]
- 13 Guzik A, Bushnell C. Stroke Epidemiology and Risk Factor Management. *Continuum (Minneapolis)* 2017; **23**: 15-39 [PMID: 28157742 DOI: 10.1212/CON.0000000000000416]
- 14 Nael K, Knitter JR, Jahan R, Gornbein J, Ajani Z, Feng L, Meyer BC, Schwamm LH, Yoo AJ, Marshall RS, Meyers PM, Yavagal DR, Wintermark M, Liebeskind DS, Guzy J, Starkman S, Saver JL, Kidwell CS. Multiparametric Magnetic Resonance Imaging for Prediction of Parenchymal Hemorrhage in Acute Ischemic Stroke After Reperfusion Therapy. *Stroke* 2017; **48**: 664-670 [PMID: 28138001 DOI: 10.1161/STROKEAHA.116.014343]
- 15 Zhang B, Gu J, Qian M, Niu L, Zhou H, Ghista D. Correlation between quantitative analysis of wall shear stress and intima-media thickness in atherosclerosis development in carotid arteries. *Biomed Eng Online* 2017; **16**: 137 [PMID: 29208019 DOI: 10.1186/s12938-017-0425-9]
- 16 Peiffer V, Sherwin SJ, Weinberg PD. Does low and oscillatory wall shear stress correlate spatially with early atherosclerosis? A systematic review. *Cardiovasc Res* 2013; **99**: 242-250 [PMID: 23459102 DOI: 10.1093/cvr/cvt044]

- 17 **Zhou H**, Meng L, Zhou W, Xin L, Xia X, Li S, Zheng H, Niu L. Computational and experimental assessment of influences of hemodynamic shear stress on carotid plaque. *Biomed Eng Online* 2017; **16**: 92 [PMID: 28755660 DOI: 10.1186/s12938-017-0386-z]
- 18 **Buchanan CF**, Verbridge SS, Vlachos PP, Rylander MN. Flow shear stress regulates endothelial barrier function and expression of angiogenic factors in a 3D microfluidic tumor vascular model. *Cell Adh Migr* 2014; **8**: 517-524 [PMID: 25482628 DOI: 10.4161/19336918.2014.970001]
- 19 **De Wilde D**, Trachet B, De Meyer GR, Segers P. Shear Stress Metrics and Their Relation to Atherosclerosis: An In Vivo Follow-up Study in Atherosclerotic Mice. *Ann Biomed Eng* 2016; **44**: 2327-2338 [PMID: 26695938 DOI: 10.1007/s10439-015-1540-z]
- 20 **Kefayati S**, Milner JS, Holdsworth DW, Poepping TL. In vitro shear stress measurements using particle image velocimetry in a family of carotid artery models: effect of stenosis severity, plaque eccentricity, and ulceration. *PLoS One* 2014; **9**: e98209 [PMID: 25007248 DOI: 10.1371/journal.pone.0098209]
- 21 **Wang C**, Chen M, Liu SL, Liu Y, Jin JM, Zhang YH. Spatial distribution of wall shear stress in common carotid artery by color Doppler flow imaging. *J Digit Imaging* 2013; **26**: 466-471 [PMID: 22832893 DOI: 10.1007/s10278-012-9505-3]
- 22 **Erdur H**, Scheitz JF, Ebinger M, Rocco A, Grittner U, Meisel A, Rothwell PM, Endres M, Nolte CH. In-hospital stroke recurrence and stroke after transient ischemic attack: frequency and risk factors. *Stroke* 2015; **46**: 1031-1037 [PMID: 25737318 DOI: 10.1161/STROKEAHA.114.006886]
- 23 **Sundararajan V**, Thrift AG, Phan TG, Choi PM, Clissold B, Srikanth VK. Trends over time in the risk of stroke after an incident transient ischemic attack. *Stroke* 2014; **45**: 3214-3218 [PMID: 25256181 DOI: 10.1161/STROKEAHA.114.006575]
- 24 **Grau AJ**, Eicke M, Burmeister C, Hardt R, Schmitt E, Dienlin S. Risk of Ischemic Stroke and Transient Ischemic Attack Is Increased up to 90 Days after Non-Carotid and Non-Cardiac Surgery. *Cerebrovasc Dis* 2017; **43**: 242-249 [PMID: 28241134 DOI: 10.1159/000460827]
- 25 **Corban MT**, Eshtehardi P, Suo J, McDaniel MC, Timmins LH, Rassoul-Arzrumly E, Maynard C, Mekonnen G, King S, Quyyumi AA, Giddens DP, Samady H. Combination of plaque burden, wall shear stress, and plaque phenotype has incremental value for prediction of coronary atherosclerotic plaque progression and vulnerability. *Atherosclerosis* 2014; **232**: 271-276 [PMID: 24468138 DOI: 10.1016/j.atherosclerosis.2013.11.049]
- 26 **Hung OY**, Brown AJ, Ahn SG, Veneziani A, Giddens DP, Samady H. Association of Wall Shear Stress with Coronary Plaque Progression and Transformation. *Interv Cardiol Clin* 2015; **4**: 491-502 [PMID: 28581935 DOI: 10.1016/j.iccl.2015.06.009]
- 27 **Borné Y**, Fagerberg B, Persson M, Östling G, Söderholm M, Hedblad B, Sallsten G, Barregard L, Engström G. Cadmium, Carotid Atherosclerosis, and Incidence of Ischemic Stroke. *J Am Heart Assoc* 2017; **6**: e006415 [PMID: 29197829 DOI: 10.1161/JAHA.117.006415]
- 28 **Meschia JF**, Brott T. Ischaemic stroke. *Eur J Neurol* 2018; **25**: 35-40 [PMID: 28800170 DOI: 10.1111/ene.13409]
- 29 **Xiong H**, Liu X, Tian X, Pu L, Zhang H, Lu M, Huang W, Zhang YT. A numerical study of the effect of varied blood pressure on the stability of carotid atherosclerotic plaque. *Biomed Eng Online* 2014; **13**: 152 [PMID: 25413300 DOI: 10.1186/1475-925X-13-152]
- 30 **Shroff GR**, Solid CA, Bloomgarden Z, Halperin JL, Herzog CA. Temporal trends in ischemic stroke and anticoagulation therapy for non-valvular atrial fibrillation: effect of diabetes. *J Diabetes* 2017; **9**: 115-122 [PMID: 26929264 DOI: 10.1111/1753-0407.12392]
- 31 **Spence JD**. Homocysteine lowering for stroke prevention: Unravelling the complexity of the evidence. *Int J Stroke* 2016; **11**: 744-747 [PMID: 27462097 DOI: 10.1177/1747493016662038]
- 32 **Eshtehardi P**, Brown AJ, Bhargava A, Costopoulos C, Hung OY, Corban MT, Hosseini H, Gogas BD, Giddens DP, Samady H. High wall shear stress and high-risk plaque: an emerging concept. *Int J Cardiovasc Imaging* 2017; **33**: 1089-1099 [PMID: 28074425 DOI: 10.1007/s10554-016-1055-1]



Published By Baishideng Publishing Group Inc
7041 Koll Center Parkway, Suite 160, Pleasanton, CA 94566, USA
Telephone: +1-925-2238242
E-mail: bpgoffice@wjgnet.com
Help Desk: <https://www.f6publishing.com/helpdesk>
<https://www.wjgnet.com>

