

World Journal of *Clinical Cases*

World J Clin Cases 2019 October 26; 7(20): 3168-3383



**OPINION REVIEW**

- 3168** Clinical use of low-dose aspirin for elders and sensitive subjects
Zhang Y, Fang XM, Chen GX

ORIGINAL ARTICLE**Retrospective Study**

- 3175** Distribution and drug resistance of pathogenic bacteria in emergency patients
Huai W, Ma QB, Zheng JJ, Zhao Y, Zhai QR
- 3185** Comparative analysis of robotic *vs* laparoscopic radical hysterectomy for cervical cancer
Chen L, Liu LP, Wen N, Qiao X, Meng YG
- 3194** Feasibility of laparoscopic isolated caudate lobe resection for rare hepatic mesenchymal neoplasms
Li Y, Zeng KN, Ruan DY, Yao J, Yang Y, Chen GH, Wang GS
- 3202** Rh-incompatible hemolytic disease of the newborn in Hefei
Bi SH, Jiang LL, Dai LY, Zheng H, Zhang J, Wang LL, Wang C, Jiang Q, Liu Y, Zhang YL, Wang J, Zhu C, Liu GH, Teng RJ
- 3208** Soft tissue release combined with joint-sparing osteotomy for treatment of cavovarus foot deformity in older children: Analysis of 21 cases
Chen ZY, Wu ZY, An YH, Dong LF, He J, Chen R

Observational Study

- 3217** Clinical characteristics of sentinel polyps and their correlation with proximal colon cancer: A retrospective observational study
Wang M, Lu JJ, Kong WJ, Kang XJ, Gao F

Prospective Study

- 3226** Longitudinal observation of intraocular pressure variations with acute altitude changes
Xie Y, Sun YX, Han Y, Yang DY, Yang YQ, Cao K, Li SN, Li X, Lu XX, Wu SZ, Wang NL

Randomized Controlled Trial

- 3237** Combination of propofol and dezocine to improve safety and efficacy of anesthesia for gastroscopy and colonoscopy in adults: A randomized, double-blind, controlled trial
Li XT, Ma CQ, Qi SH, Zhang LM

META-ANALYSIS

- 3247** Prognostic significance of malignant ascites in gastric cancer patients with peritoneal metastasis: A systemic review and meta-analysis
Zheng LN, Wen F, Xu P, Zhang S

CASE REPORT

- 3259** Gonadotrophin-releasing hormone agonist-induced pituitary adenoma apoplexy and casual finding of a parathyroid carcinoma: A case report and review of literature
Triviño V, Fidalgo O, Juane A, Pombo J, Cordido F
- 3267** Constrictive pericarditis as a cause of refractory ascites after liver transplantation: A case report
Bezjak M, Kocman B, Jadrijević S, Gašparović H, Mrzljak A, Kanižaj TF, Vujanić D, Bubalo T, Mikulić D
- 3271** Endoluminal closure of an unrecognized penetrating stab wound of the duodenum with endoscopic band ligation: A case report
Kim DH, Choi H, Kim KB, Yun HY, Han JH
- 3276** Spontaneous superior mesenteric artery dissection following upper gastrointestinal panendoscopy: A case report and literature review
Ou Yang CM, Yen YT, Chua CH, Wu CC, Chu KE, Hung TI
- 3282** Hepatic amyloidosis leading to hepatic venular occlusive disease and Budd-Chiari syndrome: A case report
Li TT, Wu YF, Liu FQ, He FL
- 3289** Termination of a partial hydatidiform mole and coexisting fetus: A case report
Zhang RQ, Zhang JR, Li SD
- 3296** De Winter syndrome and ST-segment elevation myocardial infarction can evolve into one another: Report of two cases
Lin YY, Wen YD, Wu GL, Xu XD
- 3303** Next generation sequencing reveals co-existence of hereditary spherocytosis and Dubin-Johnson syndrome in a Chinese girl: A case report
Li Y, Li Y, Yang Y, Yang WR, Li JP, Peng GX, Song L, Fan HH, Ye L, Xiong YZ, Wu ZJ, Zhou K, Zhao X, Jing LP, Zhang FK, Zhang L
- 3310** Recognizable type of pituitary, heart, kidney and skeletal dysplasia mostly caused by SEMA3A mutation: A case report
Hu F, Sun L
- 3316** Dermatofibrosarcoma metastases to the pancreas: A case report
Cai HJ, Fang JH, Cao N, Wang W, Kong FL, Sun XX, Huang B

- 3322** Repeated lumps and infections: A case report on breast augmentation complications
Zhang MX, Li SY, Xu LL, Zhao BW, Cai XY, Wang GL
- 3329** Severe mental disorders following anti-retroviral treatment in a patient on peritoneal dialysis: A case report and literature review
He QE, Xia M, Ying GH, He XL, Chen JH, Yang Y
- 3335** Fish bone-induced myocardial injury leading to a misdiagnosis of acute myocardial infarction: A case report
Wang QQ, Hu Y, Zhu LF, Zhu WJ, Shen P
- 3341** Potentially fatal electrolyte imbalance caused by severe hydrofluoric acid burns combined with inhalation injury: A case report
Fang H, Wang GY, Wang X, He F, Su JD
- 3347** Ureter - an unusual site of breast cancer metastasis: A case report
Zhou ZH, Sun LJ, Zhang GM
- 3353** Alternative technique to save ischemic bowel segment in management of neonatal short bowel syndrome: A case report
Geng L, Zhou L, Ding GJ, Xu XL, Wu YM, Liu JJ, Fu TL
- 3358** Sister Mary Joseph's nodule in endometrial carcinoma: A case report
Li Y, Guo P, Wang B, Jia YT
- 3364** Synchronous quadruple primary malignancies of the cervix, endometrium, ovary, and stomach in a single patient: A case report and review of literature
Wang DD, Yang Q
- 3372** Ureteral Ewing's sarcoma in an elderly woman: A case report
Li XX, Bi JB
- 3377** Anaplastic lymphoma kinase-negative anaplastic large cell lymphoma masquerading as Behcet's disease: A case report and review of literature
Luo J, Jiang YH, Lei Z, Miao YL

ABOUT COVER

Editorial Board Member of *World Journal of Clinical Cases*, Faycal Lakhdar, MD, Professor, Department of Neurosurgery, University Hospital Center of Fes, University Sidi Mohammed Ben Abdellah, FES 10000, Morocco

AIMS AND SCOPE

The primary aim of *World Journal of Clinical Cases* (WJCC, *World J Clin Cases*) is to provide scholars and readers from various fields of clinical medicine with a platform to publish high-quality clinical research articles and communicate their research findings online.

WJCC mainly publishes articles reporting research results and findings obtained in the field of clinical medicine and covering a wide range of topics, including case control studies, retrospective cohort studies, retrospective studies, clinical trials studies, observational studies, prospective studies, randomized controlled trials, randomized clinical trials, systematic reviews, meta-analysis, and case reports.

INDEXING/ABSTRACTING

The WJCC is now indexed in PubMed, PubMed Central, Science Citation Index Expanded (also known as SciSearch®), and Journal Citation Reports/Science Edition. The 2019 Edition of Journal Citation Reports cites the 2018 impact factor for WJCC as 1.153 (5-year impact factor: N/A), ranking WJCC as 99 among 160 journals in Medicine, General and Internal (quartile in category Q3).

RESPONSIBLE EDITORS FOR THIS ISSUE

Responsible Electronic Editor: Ji-Hong Liu

Proofing Production Department Director: Yun-Xiaojuan Wu

NAME OF JOURNAL

World Journal of Clinical Cases

ISSN

ISSN 2307-8960 (online)

LAUNCH DATE

April 16, 2013

FREQUENCY

Semimonthly

EDITORS-IN-CHIEF

Dennis A Bloomfield, Bao-Gan Peng, Sandro Vento

EDITORIAL BOARD MEMBERS

<https://www.wjnet.com/2307-8960/editorialboard.htm>

EDITORIAL OFFICE

Jin-Lei Wang, Director

PUBLICATION DATE

October 26, 2019

COPYRIGHT

© 2019 Baishideng Publishing Group Inc

INSTRUCTIONS TO AUTHORS

<https://www.wjnet.com/bpg/gerinfo/204>

GUIDELINES FOR ETHICS DOCUMENTS

<https://www.wjnet.com/bpg/GerInfo/287>

GUIDELINES FOR NON-NATIVE SPEAKERS OF ENGLISH

<https://www.wjnet.com/bpg/gerinfo/240>

PUBLICATION MISCONDUCT

<https://www.wjnet.com/bpg/gerinfo/208>

ARTICLE PROCESSING CHARGE

<https://www.wjnet.com/bpg/gerinfo/242>

STEPS FOR SUBMITTING MANUSCRIPTS

<https://www.wjnet.com/bpg/GerInfo/239>

ONLINE SUBMISSION

<https://www.f6publishing.com>



Retrospective Study

Comparative analysis of robotic vs laparoscopic radical hysterectomy for cervical cancer

Li Chen, Li-Ping Liu, Na Wen, Xiao Qiao, Yuan-Guang Meng

ORCID number: Li Chen (0000-0002-4243-9519); Li-Ping Liu (0000-0002-7106-0102); Na Wen (0000-0001-5439-0444); Xiao Qiao (0000-0002-4403-9471); Yuan-Guang Meng (0000-0002-4957-3999).

Author contributions: Chen L and Liu LP contributed equally to this work and should be considered as co-first authors; Chen L and Meng YG performed the research and wrote the paper; Wen N and Qiao X contributed data collection and analytic tools.

Institutional review board

statement: All specimens from the patients were obtained after their informed consent and ethical permission was obtained for participation in the study.

Informed consent statement: The patient's legal guardian provided written informed consent prior to study enrollment.

Conflict-of-interest statement: The authors report no relevant conflicts of interest.

Open-Access: This article is an open-access article which was selected by an in-house editor and fully peer-reviewed by external reviewers. It is distributed in accordance with the Creative Commons Attribution Non Commercial (CC BY-NC 4.0) license, which permits others to distribute, remix, adapt, build upon this work non-commercially, and license their derivative works on different terms, provided the original work is properly cited and the use is non-commercial. See: <http://creativecommons.org/licenses/by-nc/4.0/>

Li Chen, Na Wen, Yuan-Guang Meng, Department of Obstetrics and Gynecology, Chinese PLA General Hospital, Beijing 100853, China

Li-Ping Liu, Department of Obstetrics and Gynecology, The First Central Hospital of Baoding, Baoding 071000, Hebei Province, China

Xiao Qiao, Medical Big Data Center, Chinese PLA General Hospital, Beijing 100853, China

Corresponding author: Yuan-Guang Meng, MD, PhD, Professor, Department of Obstetrics and Gynecology, Chinese PLA General Hospital, No. 28, Fuxing Road, Haidian District, Beijing 100853, China. mengyg6512@163.com

Telephone: +86-10-66938443

Fax: +86-10-66938443

Abstract

BACKGROUND

Cervical cancer is the most common gynecological malignancy, ranking first in female reproductive malignancies with more than 500000 new cases and 275000 deaths each year. Traditionally, open radical hysterectomy is considered the standard surgical procedure for the treatment of resectable cervical cancer. The latest guidelines from the National Comprehensive Cancer Network and the European Society of Gynecological Oncology suggest that open surgery and laparoscopic surgery (using traditional laparoscopic or robotic techniques) are the main surgical approaches for radical hysterectomy for patients with stage IA2-IIA cervical cancer. Robotic surgery has been increasingly used in abdominal surgery and has shown more beneficial effects.

AIM

To analyse the perioperative conditions, complications, and short-term and long-term effects in patients undergoing robotic radical hysterectomy (RRH) and laparoscopic radical hysterectomy (LRH) to compare their clinical efficacy, safety, and feasibility.

METHODS

The perioperative data of patients undergoing RRH and LRH were extracted and collected from the database of surgical treatments for cervical cancer for statistical analysis.

RESULTS

Of the patients, 342 underwent LRH for cervical cancer, and 216 underwent RRH. The total complication rate was 9.65% (20 patients) in the RRH group and 17.59%

ses/by-nc/4.0/

Manuscript source: Unsolicited manuscript**Received:** June 11, 2019**Peer-review started:** June 18, 2019**First decision:** July 30, 2019**Revised:** August 24, 2019**Accepted:** September 9, 2019**Article in press:** September 9, 2019**Published online:** October 26, 2019**P-Reviewer:** Hoda A, Ichiro S**S-Editor:** Zhang L**L-Editor:** Wang TQ**E-Editor:** Liu JH

(60 patients) in the LRH group. The complication rate was significantly lower in the RRH group than in the LRH group. There was no significant difference in the follow-up period ($P = 0.658$). The total recurrence rates were 15.7% and 12% in the RRH and LRH groups, respectively. The progression-free survival time was 28.91 ± 15.68 mo and 28.34 ± 15.13 mo in the RRH and LRH groups, respectively ($P = 0.669$). The overall survival (OS) rates were 92.13% and 94.45% in the RRH and LRH groups, respectively ($P = 0.292$). The OS time was 29.87 ± 15.92 mo and 29.41 ± 15.14 mo in the RRH and LRH groups, respectively ($P = 0.732$). The survival curves and the progression-free survival curves were not statistically significantly different between the two groups ($P = 0.407$ and 0.28 , respectively).

CONCLUSION

RRH is associated with significantly less operative time and blood loss than LRH. The two procedures have similar complication rates, OS, and progression-free survival time.

Key words: Cervical cancer; Robotic radical hysterectomy; Laparoscopy; Survival

©The Author(s) 2019. Published by Baishideng Publishing Group Inc. All rights reserved.

Core tip: The perioperative data of patients undergoing robotic radical hysterectomy (RRH) and laparoscopic radical hysterectomy (LRH) were extracted and collected from the database of surgical treatments for cervical cancer for statistical analysis. Of the patients, 342 underwent LRH for cervical cancer, and 216 underwent RRH. The operative time and blood loss were significantly less in the RRH group than in the LRH group. The two groups had similar complication rates, overall survival, and progression-free survival time.

Citation: Chen L, Liu LP, Wen N, Qiao X, Meng YG. Comparative analysis of robotic vs laparoscopic radical hysterectomy for cervical cancer. *World J Clin Cases* 2019; 7(20): 3185-3193

URL: <https://www.wjgnet.com/2307-8960/full/v7/i20/3185.htm>

DOI: <https://dx.doi.org/10.12998/wjcc.v7.i20.3185>

INTRODUCTION

Cervical cancer is the most common gynecological malignancy, ranking first in female reproductive malignancies with more than 500000 new cases and 275000 deaths each year^[1]. In China, the incidence of cervical cancer varies across different regions. Women between 40 and 50 years old have higher incidence rates. The incidence in rural and mountain areas is higher than that in urban areas and on the plains^[2-4].

Surgical resection with adequate lymphadenectomy is the main treatment for improving the survival rate of patients with cervical cancer. Traditionally, open radical hysterectomy (ORH) is considered the standard surgical procedure for the treatment of resectable cervical cancer. In 1992, Nezhat *et al*^[5] first reported laparoscopic radical hysterectomy (LRH) for the treatment of cervical cancer. Since then, LRH has been reported with satisfactory surgical outcomes, compared with traditional open surgery^[6]. The latest guidelines from the National Comprehensive Cancer Network and the European Society of Gynecological Oncology suggest that open surgery and laparoscopic surgery (using traditional laparoscopic or robotic techniques) are the main surgical approaches for radical hysterectomy for patients with stage IA2-IIA cervical cancer^[7-9]. Robotic surgery has been increasingly used in abdominal surgery and has shown more beneficial effects^[10-12].

In 2006, Sert *et al*^[13] first published the results of robotic radical hysterectomy (RRH) with lymphadenectomy. To date, there have been relatively more studies of RRH for cervical cancer in foreign countries^[14-19]. Our center started to provide a service to perform RRH for cervical cancer relatively early in China, and it has also accumulated rich clinical experience.

This study was retrospectively performed to analyze the perioperative conditions, complications, and short-term and long-term effects in patients undergoing RRH and LRH in our center from February 2014 to December 2018, with an aim to compare

their clinical efficacy, safety, and feasibility.

MATERIALS AND METHODS

The perioperative data of patients undergoing RRH and LRH were extracted and collected from the database of surgical treatments for cervical cancer (from February 2014 to December 2014) for statistical analysis.

Inclusion and exclusion criteria

The inclusion criteria included: (A) Patients with newly diagnosed cervical cancer [International Federation of Gynecology and Obstetrics (FIGO, 2009) stage IA-IIB]; (B) Patients with pathological diagnoses of squamous cell carcinoma, adenocarcinoma, or adenosquamous carcinoma; and (C) Patients with complete medical records who provided written informed consent for surgery. The exclusion criteria included: (A) Patients with uterine length greater than 12 cm; (B) Pregnant patients; (C) Patients with restrictions for creating a pneumoperitoneum; (D) Patients with clinical and radiological evidence showing lymph node and distant metastases; (E) Patients with histories of abdominal or pelvic chemoradiotherapy; (F) Patients without follow-up data available; and (G) Patients with histories of multiple primary malignancies.

Standardized regimen

The design of this study and the standardized regimen were approved by the Ethics Committee of the General Hospital of the People's Liberation Army. After patient admission, the relevant examinations were completed; the patients were informed of the surgical risk and provided their written informed consent. The procedures were performed by surgical specialists and much the same team.

RRH for cervical cancer

After general anesthesia with tracheal intubation, the patient was placed in the lithotomy position with 30° elevation of the feet. The pneumoperitoneum pressure was maintained at 14 mm Hg. Preparation of the Da Vinci robotic surgical system is as follows. Two trocars were placed in the site 8 cm above the umbilicus and 30° to 45° to the right and at a site 8 cm above the umbilicus in the middle line, respectively. After creation of the pneumoperitoneum and camera placement, the trocar for the robotic arms was placed under camera guidance. The trocars were located at sites 7 to 8 cm lateral to the umbilicus and formed fan-shaped distribution with the trocar for the camera. Robotic arms 1 and 2 were attached to the trocars. The monopolar electro-surgical knife/shovel and bipolar forceps were placed. Another 2 ancillary trocars were placed.

LRH for cervical cancer

The pelvic and abdominal cavities were examined, and adhesions were lysed. The infundibulopelvic ligament and the round ligament on the right side were divided after high ligation. The anterior and posterior leaves of the broad ligament were opened gradually. The uterovesical fold was opened with scissors. The same procedure was performed on the left side for this step. The posterior peritoneum was opened to sequentially remove the bilateral common iliac lymph nodes, external iliac lymph nodes, deep inguinal lymph nodes, internal iliac lymph nodes, and obturator lymph nodes. The right uterine artery was divided to unroof the ureter and manage the sacrospinous ligament and cardinal ligament. The same procedure was performed on the left side for this step. The remaining parametrial tissues and the upper 1/3 of the vagina were resected. After specimen removal, the vaginal stump was closed with continuous sutures. The pelvic cavity was thoroughly evaluated. The pelvic cavity was irrigated, and hemostasis was performed if necessary. The drainage tube and urinary catheter were placed, and the procedure was completed. After the procedure, the patient's pathological report was evaluated. Patients with lymph node metastasis, parametrial involvement, positive vaginal margins, lymphatic involvement, tumor invasion to deep interstitial regions, and large tumors (≥ 4 cm) underwent adjuvant therapy, such as radiotherapy and chemotherapy.

Statistical analysis

SPSS software (IBM statistics, version 22.0) was used for statistical analyses of the experimental data. The continuous parameters are expressed as the mean \pm SD. The categorical variables are described as the positive rate (ratio). The paired *t*-test and the chi-square test were used for the statistical analysis. $P < 0.05$ was considered to be statistically significant between the two groups.

RESULTS

Demographic data

A total of 558 cervical cancer patients who were admitted between February 2014 and December 2018 were included in this study. Of the patients, 342 underwent LRH for cervical cancer, and 216 underwent RRH. The age of the patients was 47.49 ± 9.81 years old and 48.90 ± 9.65 years old in the LRH and RRH groups, respectively. The body mass index was 23.74 ± 2.96 kg/m² and 24.20 ± 3.37 kg/m² in the LRH and RRH groups, respectively (Table 1).

Stage IA1-IB1 patients accounted for 60.82% and 61.57% of all patients in the LRH and RRH groups, respectively. The stage IB2-IIA1 patients accounted for 36.55% and 35.65% of all patients in the LRH and RRH groups, respectively. Squamous cell carcinoma (92.40% and 90.74%) and adenocarcinoma (7.02% and 8.80%) were the main pathological types in the LRH and RRH groups, and there were two patients with adenosquamous carcinoma in the LRH group ($P = 0.504$).

Comparative parameter analysis related to the procedures and postoperative adjuvant therapy

In the comparison of the main parameters of the procedure, the operative time and estimated intraoperative blood loss were significantly less in the RRH group than in the LRH group (operative time: 197.16 ± 57.76 vs 233.50 ± 59.76 min, $P < 0.001$; blood loss: 163.09 ± 320.95 vs 233.50 ± 59.76 min, $P < 0.001$; Table 2). The number of dissected lymph nodes during surgery (23.51 ± 9.31 vs 25.09 ± 11.41 , $P = 0.748$), length of postoperative hospital stay (12.28 ± 5.06 vs 10.87 ± 4.44 , $P = 0.772$), and total length of hospital stay (18.57 ± 5.61 vs 17.19 ± 6.29 , $P = 0.777$) were not statistically significantly different between the RRH and LRH groups. The proportion of blood transfusions in the RRH group (3.80%, 8 cases) was significantly less than that in the LRH group (11.57%, 39 cases) ($P < 0.001$).

There was no statistically significant difference in the intra-operative injury rate (2.31% vs 0.87%, $P > 0.05$) between the two groups. There were four cases of vascular injury and one case of bladder injury in the RRH group and three cases of vascular injury in the LRH group.

The postoperative radiotherapy rates were 47.22% (102 patients) and 50.29% (172 patients), respectively; the postoperative chemotherapy rates were 11.57% (25 patients) and 12.28% (42 patients) in the two groups. There was no significant difference in the postoperative radiotherapy or chemotherapy rates between the two groups ($P = 0.268$ and $P = 0.457$, respectively).

Comparative analysis of postoperative complications

The total complication rate was 9.65% (20 patients) in the RRH group and 17.59% (60 patients) in the LRH group (Table 3). The complication rate was significantly lower in the RRH group than in the LRH group.

Early postoperative complications (within 4 wk after surgery) were mainly infections and fever (body temperature ≥ 38.0 °C). The early infection rate and fever rate were significantly lower in the RRH group than in the LRH group (infection: 1.46% vs 3.70%, $P = 0.007$; fever: 4.39% vs 6.48%, $P = 0.017$). The infections mainly included wound infections (2 cases and 9 cases) and urinary tract infections (1 case and 3 cases). A case of lower extremity venous thrombosis occurred after surgery in the RRH group. A urethral fistula was reported in a patient in the RRH group, and intestinal obstruction was reported in two patients in the LRH group.

Long-term postoperative complications (after 4 wk postoperatively) were mainly associated with lymphatic drainage disorder after lymphadenectomy (Figure 1). The incidence of lower extremity edema was significantly lower in the RRH group than in the LRH group (3.8% vs 4.63%, $P = 0.036$). There was no statistically significant difference in the incidence of inguinal lymphocysts (1.39% vs 0.88%, $P = 0.429$).

Comparative analysis of postoperative follow-up results and survival curves

The follow-up periods were 30.07 ± 15.67 mo and 29.48 ± 15.07 mo in the RRH and LRH groups, respectively (Table 4). There was no significant difference in follow-up period ($P = 0.658$). The total recurrence rates were 15.7% and 12% in the RRH and LRH groups, respectively. The progression-free survival time was 28.91 ± 15.68 mo and 28.34 ± 15.13 mo in the RRH and LRH groups, respectively, and the difference in progression-free survival time was not statistically significant ($P = 0.669$). The overall survival (OS) rates were 92.13% and 94.45% in the RRH and LRH groups, respectively, and there was no significant difference between them ($P = 0.292$). The OS time was 29.87 ± 15.92 mo and 29.41 ± 15.14 mo in the RRH and LRH groups, respectively ($P = 0.732$).

The survival curves and the progression-free survival curves were not statistically

Table 1 Baseline demographic data of patients in the robotic radical hysterectomy and laparoscopic radical hysterectomy groups

	RRH (n = 216)	LRH (n = 342)	P value
Age (yr)	48.90 ± 9.65	47.49 ± 9.81	0.773
BMI (kg/m ²)	24.20 ± 3.37	23.74 ± 2.96	0.925
FIGO stage			
IA1-IB1	133 (61.57%)	208 (60.82%)	0.902
IB2-IIA1	67 (35.65%)	105 (30.70%)	
IIA2-IIIB	16 (2.78%)	29 (8.48%)	
Pathological type			
Squamous cell carcinoma	196 (90.74%)	316 (92.40%)	0.504
Adenocarcinoma	19 (8.80%)	22 (6.43%)	
Adenosquamous carcinoma	1 (0.46%)	2 (0.58%)	

RRH: Robotic radical hysterectomy; LRH: Laparoscopic radical hysterectomy; BMI: Body Mass Index; FIGO stage: International Federation of Gynaecology and Obstetrics stage.

significantly different between the RRH and LRH groups ($P = 0.407$ and $P = 0.28$, respectively).

DISCUSSION

According to statistics from the World Health Organization, more than 90% of new cases and deaths of patients with cervical cancer worldwide were reported in developing countries^[7,20-23]. To date, the treatments for cervical cancer include surgery, radiation therapy, and chemotherapy.

As one of the important approaches to cervical cancer treatment, surgical treatment has evolved from transabdominal surgery, transvaginal surgery, and laparoscopic surgery to robotic surgery. Compared with ORH, LRH has advantages including cosmetic incisions, less trauma, quick healing, a clear and accurately magnified surgical field, rapid recovery, and fewer complications^[11,24,25]. However, it has many shortcomings: The poor accuracy of the surgical field on two-dimensional imaging; the limited range of instrument flexibility, which is not conducive to fine surgical operations; and the long learning curve, which means that extensive practice is needed to master the procedure^[26]. The da Vinci robotic surgery system somewhat overcomes these shortcomings and has greater accuracy and stability for the operation. Thus, it has been widely used in the treatment of gynecological diseases^[27-32].

A study by Boggess *et al*^[33] compared the results of 51 patients undergoing RRH and 49 patients undergoing LRH and showed that type III pelvic lymphadenectomy is feasible during RRH and might be superior to that during LRH in patients with early cervical cancer.

The current study included more patients than the previous studies, including 216 patients undergoing RRH and 342 patients undergoing LRH. There were no differences in the basic characteristics between the two groups. However, the operative time and blood loss were significantly less in the RRH group than in the LRH group.

According to the literature, the incidences of urinary and vascular injuries were 3.3% and 6%, respectively, in patients undergoing open radical hysterectomy^[34]. In the current study, a patient in the RRH group experienced intraoperative urinary tract injury and a ureterovaginal fistula after surgery. The incidence of urinary injury was 0.46%. There were 4 and 3 cases of vascular injury in the RRH and LRH groups, respectively. The incidences were 1.85% and 0.87%, respectively. The incidence of intraoperative injury was significantly lower than that reported in the previous ORH study.

The main evaluation parameters of the surgical efficacy of malignant tumors are the recurrence rate and survival rate of patients after surgery. To date, there have been few reports about the recurrence rate and survival rate in patients undergoing RRH and LRH. Kawal *et al*^[35] performed a follow-up in 109 patients undergoing RRH. The recurrence rate was 16.5%. The 2-year and 5-year OS rates were 96% and 89%, respectively. The 2-year and 5-year DFS rates were 88% and 72%, respectively.

Table 2 Operative and postoperative adjuvant treatment parameters in the robotic radical hysterectomy and laparoscopic radical hysterectomy groups

	LRH (n = 342)	RRH (n = 216)	P value
Operative time (min)	233.50 ± 59.76	197.16 ± 57.76	0.001
Intraoperative blood loss (mL)	280.74 ± 246.66	163.09 ± 320.95	0.001
Intraoperative blood vessel and organ injuries (cases)	3 (0.87%)	5 (2.31%)	0.153
Total number of dissected lymph nodes (pieces)	25.09 ± 11.41	23.51 ± 9.31	0.748
Intraoperative blood transfusion (cases)	39 (11.57%)	8 (3.80%)	0.001
Total length of hospital stay (d)	17.19 ± 6.29	18.57 ± 5.61	0.777
Length of postoperative hospital stay (d)	10.87 ± 4.44	12.28 ± 5.06	0.772
Postoperative chemotherapy (cases)	172 (50.29%)	102 (47.22%)	0.268
Postoperative radiotherapy (cases)	42 (12.28%)	25 (11.57%)	0.457

RRH: Robotic radical hysterectomy; LRH: Laparoscopic radical hysterectomy.

With the publication of a large, prospective, multicenter randomized, controlled trial of minimally invasive (laparoscopic and robotic surgery) radical hysterectomy for cervical cancer and open radical hysterectomy for cervical cancer in New England Journal of Medicine in 2018, the postoperative efficacy of minimally invasive surgery has once again drawn widespread attention^[36]. The study showed that, compared with open surgery, minimally invasive surgery had a significantly higher recurrence rate and a poorer survival rate. It remains a problem widely acknowledged by the medical community whether minimally invasive surgery, especially laparoscopic surgery, can reduce residual tumors through technological innovations.

Corrado *et al*^[17] demonstrated possible differences in perioperative outcomes and complications between mLRH and RRH in patients with early-stage cervical cancer. Their studies showed that the surgical efficiency of microlaparoscopic surgery is comparable to that of robotic surgery. Therefore, this result suggests room for improvement in the surgical accuracy of and reduced surgical trauma with laparoscopic techniques.

Table 3 Postoperative complications in the robotic radical hysterectomy and laparoscopic radical hysterectomy groups, *n* (%)

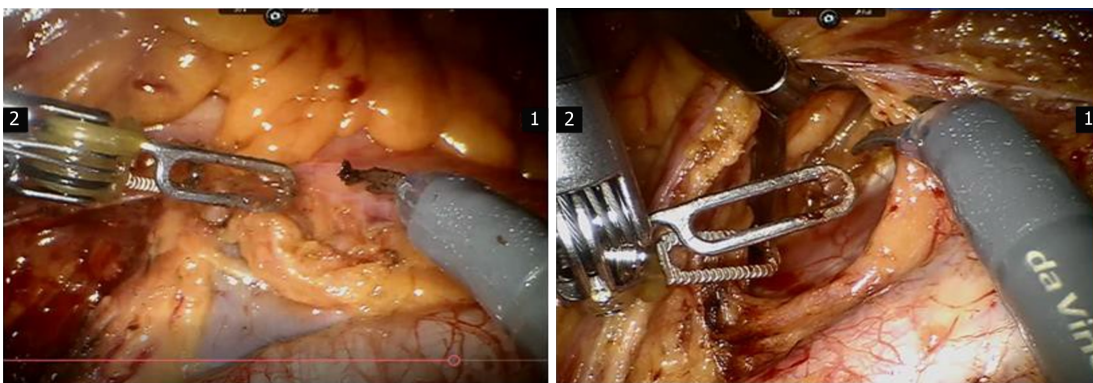
	RRH (<i>n</i> = 216)	LRH (<i>n</i> = 342)	<i>P</i> value
Total complications (cases)	20 (9.65)	60 (17.59)	0.012
Early postoperative complications (within 4 wk)			
Infection (cases)	3 (1.46)	12 (3.70)	0.007
Fever (including infection with fever) (cases)	9 (4.39)	22 (6.48)	0.017
Venous thrombosis (cases)	1 (0.46)	0 (0)	0.387
Other	1 (0.46)	2 (0.58)	0.667
Long-term postoperative complications (after 4 wk)			
Lower extremity edema	8 (3.80)	16 (4.63)	0.036
Inguinal lymphatic cyst	3 (1.39)	3 (0.88)	0.429
Other	1 (0.46)	0 (0)	0.387

RRH: Robotic radical hysterectomy; LRH: Laparoscopic radical hysterectomy.

Table 4 Follow-up data in the robotic radical hysterectomy and laparoscopic radical hysterectomy groups

	RRH (<i>n</i> = 216)	LRH (<i>n</i> = 342)	<i>P</i> value
Average follow-up period (mo)	30.07 ± 15.67	29.48 ± 15.07	0.658
Median follow-up period (mo)	29.0 (1.0-58.0)	30.0 (3.0-58.0)	
Recurrence			
Total recurrence rate	15.7%	12.00%	0.206
Number of patients with recurrence	34	41	
Median recurrence time (mo)	20.0 (7.0-49.0)	20.0 (3.0-48.0)	
Survival			
Progression-free survival rate	81.02%	85.67%	0.157
Progression-free survival time	28.91 ± 15.68	28.34 ± 15.13	0.669
Overall survival rate	92.13%	94.45%	0.292
Overall survival time	29.87 ± 15.92	29.41 ± 15.14	0.732

RRH: Robotic radical hysterectomy; LRH: Laparoscopic radical hysterectomy.

**Figure 1** Pelvic lymphadenectomy during robot-assisted radical hysterectomy for cervical cancer.**ARTICLE HIGHLIGHTS****Research background**

The da Vinci robotic surgery system somewhat overcomes the shortcomings of LRH and has greater accuracy and stability for the operation. Thus, it has been widely used in the treatment of gynecological diseases

Research motivation

This study was retrospectively performed to analyze the perioperative conditions, complications, and short-term and long-term effects in patients undergoing robotic radical hysterectomy (RRH) and laparoscopic radical hysterectomy (LRH) at our center from February 2014 to December 2018.

Research objectives

To analyze the perioperative conditions, complications, and short-term and long-term effects in patients undergoing RRH and LRH.

Research methods

The clinical efficacy, safety, and feasibility of RRH and LRH were analyzed and compared.

Research results

The complication rate was significantly lower in the RRH group than in the LRH group. There was no significant difference in follow-up period ($P = 0.658$). The total recurrence rates were 15.7% and 12% in the RRH and LRH groups, respectively. The progression-free survival time was 28.91 ± 15.68 mo and 28.34 ± 15.13 mo in the RRH and LRH groups, respectively ($P = 0.669$). The overall survival (OS) rates were 92.13% and 94.45% in the RRH and LRH groups, respectively ($P = 0.292$). The OS time was 29.87 ± 15.92 mo and 29.41 ± 15.14 mo in the RRH and LRH groups, respectively ($P = 0.732$). The survival curves and the progression-free survival curves were not statistically significantly different between the two groups.

Research conclusions

The operative time and blood loss were significantly less in the RRH group than in the LRH group. The two groups had similar complication rates, OS, and progression-free survival time.

Research perspectives

RRH can achieve similar long-term outcome to LRH with less operative time and less blood loss.

REFERENCES

- 1 **Dizon DS**, Mackay HJ, Thomas GM, Werner TL, Kohn EC, Hess D, Rose PG, Covens AL. State of the science in cervical cancer: where we are today and where we need to go. *Cancer* 2014; **120**: 2282-2288 [PMID: 24737608 DOI: 10.1002/cncr.28722]
- 2 **Practice Bulletin No. 168** Summary: Cervical Cancer Screening and Prevention. *Obstet Gynecol* 2016; **128**: 923-925 [PMID: 27661643 DOI: 10.1097/AOG.0000000000001699]
- 3 **Practice Bulletin No. 157**: Cervical Cancer Screening and Prevention. *Obstet Gynecol* 2016; **127**: e1-e20 [PMID: 26695583 DOI: 10.1097/AOG.0000000000001263]
- 4 **Herbert A**, Bryant TN, Campbell MJ, Smith J. Investigation of the effect of occult invasive cancer on progress towards successful cervical screening. *J Med Screen* 1998; **5**: 92-98 [PMID: 9718528 DOI: 10.1136/jms.5.2.92]
- 5 **Nezhat CR**, Burrell MO, Nezhat FR, Benigno BB, Welander CE. Laparoscopic radical hysterectomy with paraaortic and pelvic node dissection. *Am J Obstet Gynecol* 1992; **166**: 864-865 [PMID: 1532291 DOI: 10.1016/0002-9378(92)91351-a]
- 6 **Angelopoulos G**, Etman A, Cruickshank DJ, Twigg JP. Total laparoscopic radical hysterectomy: a change in practice for the management of early stage cervical cancer in a U.K. cancer center. *Eur J Gynaecol Oncol* 2015; **36**: 711-715 [PMID: 26775358]
- 7 **Vaccarella S**, Lortet-Tieulent J, Plummer M, Franceschi S, Bray F. Worldwide trends in cervical cancer incidence: impact of screening against changes in disease risk factors. *Eur J Cancer* 2013; **49**: 3262-3273 [PMID: 23751569 DOI: 10.1016/j.ejca.2013.04.024]
- 8 **Saslow D**, Solomon D, Lawson HW, Killackey M, Kulasingam SL, Cain J, Garcia FA, Moriarty AT, Waxman AG, Wilbur DC, Wentzensen N, Downs LS, Spitzer M, Moscicki AB, Franco EL, Stoler MH, Schiffman M, Castle PE, Myers ER; ACS-ASCCP-ASCP Cervical Cancer Guideline Committee. American Cancer Society, American Society for Colposcopy and Cervical Pathology, and American Society for Clinical Pathology screening guidelines for the prevention and early detection of cervical cancer. *CA Cancer J Clin* 2012; **62**: 147-172 [PMID: 22422631 DOI: 10.3322/caac.21139]
- 9 **Saslow D**, Solomon D, Lawson HW, Killackey M, Kulasingam SL, Cain J, Garcia FA, Moriarty AT, Waxman AG, Wilbur DC, Wentzensen N, Downs LS, Spitzer M, Moscicki AB, Franco EL, Stoler MH, Schiffman M, Castle PE, Myers ER; American Cancer Society; American Society for Colposcopy and Cervical Pathology; American Society for Clinical Pathology. American Cancer Society, American Society for Colposcopy and Cervical Pathology, and American Society for Clinical Pathology screening guidelines for the prevention and early detection of cervical cancer. *Am J Clin Pathol* 2012; **137**: 516-542 [PMID: 22431528 DOI: 10.1309/AJCPD94EVR5JCG]
- 10 **Chen DX**, Hou YH, Jiang YN, Shao LW, Wang SJ, Wang XQ. Removal of pediatric stage IV neuroblastoma by robot-assisted laparoscopy: A case report and literature review. *World J Clin Cases* 2019; **7**: 1499-1507 [PMID: 31363479 DOI: 10.12998/wjcc.v7.i12.1499]
- 11 **Willows K**, Kupets R, Diong C, Vicus D, Covens A, Gien LT. Rates over time and regional variation of radical minimally invasive surgery for cervical cancer: A population based study. *Gynecol Oncol* 2019; **154**: 338-344 [PMID: 31171407 DOI: 10.1016/j.ygyno.2019.05.019]
- 12 **Corrado G**, Vizza E, Legge F, Pedone Anchorà L, Sperduti I, Fagotti A, Mancini E, Gallotta V, Zampa A, Chiofalo B, Scambia G. Comparison of Different Surgical Approaches for Stage IBI Cervical Cancer Patients: A Multi-institution Study and a Review of the Literature. *Int J Gynecol Cancer* 2018; **28**: 1020-1028 [PMID: 29727351 DOI: 10.1097/IGC.0000000000001254]
- 13 **Sert BM**, Abeler VM. Robotic-assisted laparoscopic radical hysterectomy (Piver type III) with pelvic node dissection—case report. *Eur J Gynaecol Oncol* 2006; **27**: 531-533 [PMID: 17139995]
- 14 **Jin YM**, Liu SS, Chen J, Chen YN, Ren CC. Robotic radical hysterectomy is superior to laparoscopic

- radical hysterectomy and open radical hysterectomy in the treatment of cervical cancer. *PLoS One* 2018; **13**: e0193033 [PMID: 29554090 DOI: 10.1371/journal.pone.0193033]
- 15 **Shazly SA**, Murad MH, Dowdy SC, Gostout BS, Famuyide AO. Robotic radical hysterectomy in early stage cervical cancer: A systematic review and meta-analysis. *Gynecol Oncol* 2015; **138**: 457-471 [PMID: 26056752 DOI: 10.1016/j.ygyno.2015.06.009]
 - 16 **Corrado G**, Fanfani F, Ghezzi F, Fagotti A, Uccella S, Mancini E, Sperduti I, Stevenazzi G, Scambia G, Vizza E. Mini-laparoscopic versus robotic radical hysterectomy plus systematic pelvic lymphadenectomy in early cervical cancer patients. A multi-institutional study. *Eur J Surg Oncol* 2015; **41**: 136-141 [PMID: 25468748 DOI: 10.1016/j.ejso.2014.10.048]
 - 17 **Corrado G**, Cutillo G, Saltari M, Mancini E, Sindico S, Vici P, Sergi D, Sperduti I, Patrizi L, Pomati G, Baiocco E, Vizza E. Surgical and Oncological Outcome of Robotic Surgery Compared With Laparoscopic and Abdominal Surgery in the Management of Locally Advanced Cervical Cancer After Neoadjuvant Chemotherapy. *Int J Gynecol Cancer* 2016; **26**: 539-546 [PMID: 26825826 DOI: 10.1097/IGC.0000000000000646]
 - 18 **Vizza E**, Corrado G, Mancini E, Vici P, Sergi D, Baiocco E, Patrizi L, Saltari M, Pomati G, Cutillo G. Laparoscopic versus robotic radical hysterectomy after neoadjuvant chemotherapy in locally advanced cervical cancer: a case control study. *Eur J Surg Oncol* 2015; **41**: 142-147 [PMID: 24063966 DOI: 10.1016/j.ejso.2013.08.018]
 - 19 **Chong GO**, Lee YH, Hong DG, Cho YL, Park IS, Lee YS. Robot versus laparoscopic nerve-sparing radical hysterectomy for cervical cancer: a comparison of the intraoperative and perioperative results of a single surgeon's initial experience. *Int J Gynecol Cancer* 2013; **23**: 1145-1149 [PMID: 23748178 DOI: 10.1097/IGC.0b013e31829a5db0]
 - 20 **Santesso N**, Mustafa RA, Schünemann HJ, Arbyn M, Blumenthal PD, Cain J, Chirenje M, Denny L, De Vuyst H, Eckert LO, Forhan SE, Franco EL, Gage JC, Garcia F, Herrero R, Jeronimo J, Lu ER, Luciani S, Quek SC, Sankaranarayanan R, Tsu V, Broutet N; Guideline Support Group. World Health Organization Guidelines for treatment of cervical intraepithelial neoplasia 2-3 and screen-and-treat strategies to prevent cervical cancer. *Int J Gynaecol Obstet* 2016; **132**: 252-258 [PMID: 26868062 DOI: 10.1016/j.ijgo.2015.07.038]
 - 21 **Davis M**, Feldman S. Making Sense of Cervical Cancer Screening Guidelines and Recommendations. *Curr Treat Options Oncol* 2015; **16**: 55 [PMID: 26467929 DOI: 10.1007/s11864-015-0373-1]
 - 22 **Coppell K**, Paul C, Cox B. An evaluation of the National Cervical Screening Programme Otago site. *N Z Med J* 2000; **113**: 48-51 [PMID: 10777223]
 - 23 **Cuzick J**. Screening for cancer: future potential. *Eur J Cancer* 1999; **35**: 1925-1932 [PMID: 10711235 DOI: 10.1016/s0959-8049(99)00295-6]
 - 24 **Wang Y**, Deng L, Cao L, Xu H, Liang Z. The Outcome of Laparoscopy Versus Laparotomy for the Management of Early Stage Cervical Cancer-Meta Analysis. *J Minim Invasive Gynecol* 2015; **22**: S4-S5 [PMID: 27679229 DOI: 10.1016/j.jmig.2015.08.019]
 - 25 **Barletta F**, Corrado G, Vizza E. A Comparison Between Laparotomy, Laparoscopy and Robotic-Assisted Radical Hysterectomy in Surgical Treatment of Early Stage Cervical Cancer. *J Minim Invasive Gynecol* 2015; **22**: S48 [PMID: 27679255 DOI: 10.1016/j.jmig.2015.08.133]
 - 26 **Nezhat F**, Mahdavi A, Nagarsheth NP. Total laparoscopic radical hysterectomy and pelvic lymphadenectomy using harmonic shears. *J Minim Invasive Gynecol* 2006; **13**: 20-25 [PMID: 16431319 DOI: 10.1016/j.jmig.2005.08.011]
 - 27 **Medlin EE**, Kushner DM, Barroilhet L. Robotic surgery for early stage cervical cancer: Evolution and current trends. *J Surg Oncol* 2015; **112**: 772-781 [PMID: 26768315 DOI: 10.1002/jso.24008]
 - 28 **Morelli L**, Furbetta N, Gianardi D, Palmeri M, Di Franco G, Bianchini M, Stefanini G, Guadagni S, Di Candio G. Robot-assisted trans-gastric drainage and debridement of walled-off pancreatic necrosis using the EndoWrist stapler for the da Vinci Xi: A case report. *World J Clin Cases* 2019; **7**: 1461-1466 [PMID: 31363474 DOI: 10.12998/wjcc.v7.i12.1461]
 - 29 **Satkunasivam R**, Tallman CT, Taylor JM, Miles BJ, Klaassen Z, Wallis CJD. Robot-assisted Radical Cystectomy Versus Open Radical Cystectomy: A Meta-analysis of Oncologic, Perioperative, and Complication-related outcomes. *Eur Urol Oncol* 2019; **2**: 443-447 [PMID: 31277781 DOI: 10.1016/j.euo.2018.10.008]
 - 30 **Gil-Moreno A**, Carbonell-Socias M, Salicrú S, Centeno-Mediavilla C, Franco-Camps S, Colas E, Oaknin A, Pérez-Benavente A, Díaz-Feijoo B. Radical Hysterectomy: Efficacy and Safety in the Dawn of Minimally Invasive Techniques. *J Minim Invasive Gynecol* 2019; **26**: 492-500 [PMID: 29908339 DOI: 10.1016/j.jmig.2018.06.007]
 - 31 **Bartos P**, Struppl D, Trhlik M, Czudek S, Skrovina M, Adamcik L, Soumarová R. [Da Vinci robotic surgery in gynaecological oncology: a critical interim appraisal]. *Ceska Gynecol* 2007; **72**: 354-359 [PMID: 18175521]
 - 32 **Raspagliesi F**, Bogani G, Martinelli F, Signorelli M, Scaffa C, Sabatucci I, Lorusso D, Ditto A. 3D vision improves outcomes in early cervical cancer treated with laparoscopic type B radical hysterectomy and pelvic lymphadenectomy. *Tumori* 2017; **103**: 76-80 [PMID: 27716879 DOI: 10.5301/tj.5000572]
 - 33 **Bogges JF**, Gehrig PA, Cantrell L, Shafer A, Ridgway M, Skinner EN, Fowler WC. A case-control study of robot-assisted type III radical hysterectomy with pelvic lymph node dissection compared with open radical hysterectomy. *Am J Obstet Gynecol* 2008; **199**: 357.e1-357.e7 [PMID: 18928973 DOI: 10.1016/j.ajog.2008.06.058]
 - 34 **Park DA**, Yun JE, Kim SW, Lee SH. Surgical and clinical safety and effectiveness of robot-assisted laparoscopic hysterectomy compared to conventional laparoscopy and laparotomy for cervical cancer: A systematic review and meta-analysis. *Eur J Surg Oncol* 2017; **43**: 994-1002 [PMID: 27546015 DOI: 10.1016/j.ejso.2016.07.017]
 - 35 **Kawal T**, Sahadev R, Srinivasan A, Chu D, Weiss D, Long C, Van Batavia J, Bodar Y, Shah J, Shukla AR. Robotic surgery in infants and children: an argument for smaller and fewer incisions. *World J Urol* 2019 [PMID: 31016450 DOI: 10.1007/s00345-019-02765-z]
 - 36 **Melamed A**, Margul DJ, Chen L, Keating NL, Del Carmen MG, Yang J, Seagle BL, Alexander A, Barber EL, Rice LW, Wright JD, Kocherginsky M, Shahabi S, Rauh-Hain JA. Survival after Minimally Invasive Radical Hysterectomy for Early-Stage Cervical Cancer. *N Engl J Med* 2018; **379**: 1905-1914 [PMID: 30379613 DOI: 10.1056/NEJMoa1804923]



Published By Baishideng Publishing Group Inc
7041 Koll Center Parkway, Suite 160, Pleasanton, CA 94566, USA
Telephone: +1-925-2238242
E-mail: bpgoffice@wjgnet.com
Help Desk: <https://www.f6publishing.com/helpdesk>
<https://www.wjgnet.com>

