

World Journal of *Gastroenterology*

World J Gastroenterol 2019 September 14; 25(34): 5017-5219



**OPINION REVIEW**

- 5017** Reducing anastomotic leak in colorectal surgery: The old dogmas and the new challenges
Meyer J, Naiken S, Christou N, Liot E, Toso C, Buchs NC, Ris F

REVIEW

- 5026** Diagnostic and prognostic potential of tissue and circulating long non-coding RNAs in colorectal tumors
Galamb O, Barták BK, Kalmár A, Nagy ZB, Szigeti KA, Tulassay Z, Igaz P, Molnár B
- 5049** Autoantibodies: Potential clinical applications in early detection of esophageal squamous cell carcinoma and esophagogastric junction adenocarcinoma
Xu YW, Peng YH, Xu LY, Xie JJ, Li EM

MINIREVIEWS

- 5069** Hepatic senescence, the good and the bad
Huda N, Liu G, Hong H, Yan S, Khambu B, Yin XM
- 5082** Role of endoscopic ultrasound in the screening and follow-up of high-risk individuals for familial pancreatic cancer
Lorenzo D, Rebours V, Maire F, Palazzo M, Gonzalez JM, Vullierme MP, Aubert A, Hammel P, Lévy P, Mestier LD
- 5097** Optimizing proton pump inhibitors in *Helicobacter pylori* treatment: Old and new tricks to improve effectiveness
Ierardi E, Losurdo G, Fortezza RFL, Principi M, Barone M, Leo AD

ORIGINAL ARTICLE**Basic Study**

- 5105** Regulatory effect of a Chinese herbal medicine formula on non-alcoholic fatty liver disease
Yang JM, Sun Y, Wang M, Zhang XL, Zhang SJ, Gao YS, Chen L, Wu MY, Zhou L, Zhou YM, Wang Y, Zheng FJ, Li YH
- 5120** Allyl isothiocyanate ameliorates lipid accumulation and inflammation in nonalcoholic fatty liver disease via the Sirt1/AMPK and NF- κ B signaling pathways
Li CX, Gao JG, Wan XY, Chen Y, Xu CF, Feng ZM, Zeng H, Lin YM, Ma H, Xu P, Yu CH, Li YM
- 5134** Effect of Tong Xie Yao Fang on endogenous metabolites in urine of irritable bowel syndrome model rats
Zhao XY, Wang JW, Yin Y, Li K, Zhang M, Yan FP

Case Control Study

- 5152** Association of XPG rs2094258 polymorphism with gastric cancer prognosis
Wang XQ, Terry PD, Li Y, Zhang Y, Kou WJ, Wang MX

Retrospective Study

- 5162** Timing, distribution, and microbiology of infectious complications after necrotizing pancreatitis
Lu JD, Cao F, Ding YX, Wu YD, Guo YL, Li F
- 5174** Risk factors for Mallory-Weiss Tear during endoscopic submucosal dissection of superficial esophageal neoplasms
Chen W, Zhu XN, Wang J, Zhu LL, Gan T, Yang JL

Clinical Trials Study

- 5185** Overlay of a sponge soaked with ropivacaine and multisite infiltration analgesia result in faster recovery after laparoscopic hepatectomy
Zhang H, Du G, Liu YF, Yang JH, A-Niu MG, Zhai XY, Jin B

Observational Study

- 5197** Analysis of 72 patients with colorectal high-grade neuroendocrine neoplasms from three Chinese hospitals
Wang ZJ, An K, Li R, Shen W, Bao MD, Tao JH, Chen JN, Mei SW, Shen HY, Ma YB, Zhao FQ, Wei FZ, Liu Q

META-ANALYSIS

- 5210** Bilateral *vs* unilateral placement of metal stents for inoperable high-grade hilar biliary strictures: A systemic review and meta-analysis
Ashat M, Arora S, Klair JS, Childs CA, Murali AR, Johlin FC

ABOUT COVER

Editorial board member of *World Journal of Gastroenterology*, Matthias Ocker, MD, Professor, Department of Translational Medicine Oncology, Bayer AG, Berlin 13353, Germany

AIMS AND SCOPE

World Journal of Gastroenterology (*World J Gastroenterol*, *WJG*, print ISSN 1007-9327, online ISSN 2219-2840, DOI: 10.3748) is a peer-reviewed open access journal. The *WJG* Editorial Board consists of 701 experts in gastroenterology and hepatology from 58 countries.

The primary task of *WJG* is to rapidly publish high-quality original articles, reviews, and commentaries in the fields of gastroenterology, hepatology, gastrointestinal endoscopy, gastrointestinal surgery, hepatobiliary surgery, gastrointestinal oncology, gastrointestinal radiation oncology, etc. The *WJG* is dedicated to become an influential and prestigious journal in gastroenterology and hepatology, to promote the development of above disciplines, and to improve the diagnostic and therapeutic skill and expertise of clinicians.

INDEXING/ABSTRACTING

The *WJG* is now indexed in Current Contents®/Clinical Medicine, Science Citation Index Expanded (also known as SciSearch®), Journal Citation Reports®, Index Medicus, MEDLINE, PubMed, PubMed Central, and Scopus. The 2019 edition of Journal Citation Report® cites the 2018 impact factor for *WJG* as 3.411 (5-year impact factor: 3.579), ranking *WJG* as 35th among 84 journals in gastroenterology and hepatology (quartile in category Q2). CiteScore (2018): 3.43.

RESPONSIBLE EDITORS FOR THIS ISSUE

Responsible Electronic Editor: Yan-Liang Zhang

Proofing Production Department Director: Xiang Li

NAME OF JOURNAL

World Journal of Gastroenterology

ISSN

ISSN 1007-9327 (print) ISSN 2219-2840 (online)

LAUNCH DATE

October 1, 1995

FREQUENCY

Weekly

EDITORS-IN-CHIEF

Subrata Ghosh, Andrzej S Tarnawski

EDITORIAL BOARD MEMBERS

<http://www.wjgnet.com/1007-9327/editorialboard.htm>

EDITORIAL OFFICE

Ze-Mao Gong, Director

PUBLICATION DATE

September 14, 2019

COPYRIGHT

© 2019 Baishideng Publishing Group Inc

INSTRUCTIONS TO AUTHORS

<https://www.wjgnet.com/bpg/gerinfo/204>

GUIDELINES FOR ETHICS DOCUMENTS

<https://www.wjgnet.com/bpg/GerInfo/287>

GUIDELINES FOR NON-NATIVE SPEAKERS OF ENGLISH

<https://www.wjgnet.com/bpg/gerinfo/240>

PUBLICATION MISCONDUCT

<https://www.wjgnet.com/bpg/gerinfo/208>

ARTICLE PROCESSING CHARGE

<https://www.wjgnet.com/bpg/gerinfo/242>

STEPS FOR SUBMITTING MANUSCRIPTS

<https://www.wjgnet.com/bpg/GerInfo/239>

ONLINE SUBMISSION

<https://www.f6publishing.com>



Role of endoscopic ultrasound in the screening and follow-up of high-risk individuals for familial pancreatic cancer

Diane Lorenzo, Vinciane Rebours, Frédérique Maire, Maxime Palazzo, Jean-Michel Gonzalez, Marie-Pierre Vullierme, Alain Aubert, Pascal Hammel, Philippe Lévy, Louis de Mestier

ORCID number: diane lorenzo (0000-0002-3729-8416); Vinciane Rebours (0000-0002-0000-4525); Frédérique Maire (0000-0001-9703-7018); Maxime Palazzo (0000-0003-3500-2914); Jean Michel Gonzalez (0000-0001-5772-8236); Marie Pierre Vullierme (0000-0002-3667-8943); Alain Aubert (0000-0001-9400-6152); Pascal Hammel (0000-0002-4630-4996); Philippe Levy (0000-0002-0750-3351); Louis De Mestier (0000-0001-9715-9189).

Author contributions: Lorenzo D, Rebours V, Lévy P and de Mestier L designed research; Lorenzo D, Rebours V, Maire F, Palazzo M, Gonzalez JM, Vullierme MP, Aubert A, Hammel P, Lévy P and de Mestier L analyzed data; Lorenzo D, Rebours V, Maire F, Palazzo M, Gonzalez JM, Vullierme MP, Aubert A, Hammel P, Lévy P and de Mestier L wrote the paper.

Conflict-of-interest statement: All the authors declare no potential conflict of interest in relation with this work.

Open-Access: This is an open-access article that was selected by an in-house editor and fully peer-reviewed by external reviewers. It is distributed in accordance with the Creative Commons Attribution Non Commercial (CC BY-NC 4.0)

Diane Lorenzo, Vinciane Rebours, Frédérique Maire, Maxime Palazzo, Alain Aubert, Philippe Lévy, Louis de Mestier, Pancreatology Department, Beaujon Hospital, Assistance Publique-Hôpitaux de Paris, Clichy, and Paris Diderot University, Paris 75013, France

Vinciane Rebours, Louis de Mestier, INSERM, UMR1149, Paris 92110, France

Jean-Michel Gonzalez, Departement of Gastroenterology, Aix Marseille university - APHM - Hôpital Nord, Marseille 13000, France

Marie-Pierre Vullierme, Radiology Department, Beaujon Hospital, Assistance Publique-Hôpitaux de Paris, Clichy, and Paris Diderot University, Paris 92110, France

Pascal Hammel, Oncology Department, Beaujon Hospital, Assistance Publique-Hôpitaux de Paris, Clichy, and Paris Diderot University, Paris 92110, France

Corresponding author: Diane Lorenzo, MD, Doctor, Pôle des Maladies de l'Appareil Digestif, Service de Pancréatologie-Gastroentérologie, Hôpital BEAUJON, 100 boulevard du Général Leclerc, Clichy, France. diane.lorenzo@aphp.fr

Telephone: +33-1-40875215

Fax: +33-1-42703784

Abstract

Managing familial pancreatic cancer (FPC) is challenging for gastroenterologists, surgeons and oncologists. High-risk individuals (HRI) for pancreatic cancer (PC) (FPC or with germline mutations) are a heterogeneous group of subjects with a theoretical lifetime cumulative risk of PC over 5%. Screening is mainly based on annual magnetic resonance imaging (MRI) and endoscopic ultrasound (EUS). The goal of screening is to identify early-stage operable cancers or high-risk precancerous lesions (pancreatic intraepithelial neoplasia or intraductal papillary mucinous neoplasms with high-grade dysplasia). In the literature, target lesions are identified in 2%-5% of HRI who undergo screening. EUS appears to provide better identification of small solid lesions (0%-46% of HRI) and chronic-pancreatitis-like parenchymal changes (14%-77% of HRI), while MRI is probably the best modality to identify small cystic lesions (13%-49% of HRI). There are no specific studies in HRI on the use of contrast-enhanced harmonic EUS. EUS can also be used to obtain tissue samples. Nevertheless, there is still limited evidence on the accuracy of imaging procedures used for screening or agreement on which patients to treat. The cost-effectiveness of screening is also unclear. Certain new EUS-related techniques, such as searching for DNA abnormalities or protein markers in pancreatic fluid, appear to be promising.

license, which permits others to distribute, remix, adapt, build upon this work non-commercially, and license their derivative works on different terms, provided the original work is properly cited and the use is non-commercial. See: <http://creativecommons.org/licenses/by-nc/4.0/>

Manuscript source: Invited Manuscript

Received: June 5, 2019

Peer-review started: June 5, 2019

First decision: July 21, 2019

Revised: August 4, 2019

Accepted: August 24, 2019

Article in press: August 24, 2019

Published online: September 14, 2019

P-Reviewer: Friedel D, Vagholkar KR

S-Editor: Tang JZ

L-Editor: A

E-Editor: Zhang YL



Key words: Endoscopic ultrasound; Familial pancreatic cancer; Fine-needle aspiration; Intraductal papillary mucinous neoplasm; Pancreatic cancer; Pancreatic intraepithelial neoplasia; Pancreatic cancer screening guidelines

©The Author(s) 2019. Published by Baishideng Publishing Group Inc. All rights reserved.

Core tip: High-risk individuals (HRI) for pancreatic cancer have a lifetime cumulative risk of this disorder of over 5%. The goal of screening is to identify operable cancers or precancerous lesions. Endoscopic ultrasound (EUS) appears to better identify solid lesions (0%-46% of HRI) and chronic-pancreatitis-like parenchymal changes (14%-77%), and magnetic resonance imaging to better identify small cysts (13%-49%). EUS is used to obtain tissue samples. There are no specific studies on contrast-enhanced harmonic EUS in HRI. There is limited evidence on the accuracy of imaging used for screening or agreement on which patients to treat. The cost-effectiveness of screening is also unclear. New EUS-related techniques (identifying DNA abnormalities or protein markers) appear to be promising.

Citation: Lorenzo D, Rebours V, Maire F, Palazzo M, Gonzalez JM, Vullierme MP, Aubert A, Hammel P, Lévy P, Mestier L. Role of endoscopic ultrasound in the screening and follow-up of high-risk individuals for familial pancreatic cancer. *World J Gastroenterol* 2019; 25(34): 5082-5096

URL: <https://www.wjgnet.com/1007-9327/full/v25/i34/5082.htm>

DOI: <https://dx.doi.org/10.3748/wjg.v25.i34.5082>

INTRODUCTION

In the past few decades, the incidence of pancreatic cancer (PC) has continuously increased, while its prognosis remains poor, with a 5-year survival rate < 10% for all stages analysed together. PC is expected to become the second leading cause of cancer-related death in the United States in 2030^[1]. Early-stage surgical resection is the only potentially curative treatment that increases survival. However, complete surgical resection can only be performed in a minority of patients, since 80% of patients have metastatic or locoregionally advanced disease at diagnosis^[1-3].

Five to 10% of PCs are considered to be inherited^[4,5]. While pathogenic germline mutations in specific genes have been associated with an increased risk of PC (from 4% to 40%), a causal germline mutation is identified in fewer than 20% of these families^[6-10]. Several gene abnormalities and related hereditary syndromes have been associated with an increased risk of PC: *BRCA1* and *BRCA2* (hereditary breast ovarian cancer syndrome), *PALB2* and the genes involved in the Fanconi pathway, *CDKN2A* (familial atypical multiple mole melanoma: FAMMM), the genes involved in Lynch syndrome (mainly *MLH1*, *MSH2*, *MSH6*, and *PMS2*), *PRSS1* (hereditary pancreatitis), *STK11* (Peutz-Jeghers syndrome), *TP53* (Li-Fraumeni syndrome), *APC* (familial adenomatous polyposis), and *ATM* (ataxia telangiectasia)^[4,9,11-16]. In the remaining 85% of families with no identified germline mutation, familial pancreatic cancer (FPC) is defined by the occurrence of PC in ≥ 2 first-degree relatives or in ≥ 3 relatives whatever the degree of relationship on the same side of the family^[4,17].

Pancreatic screening is recommended in high-risk individuals (HRI) to identify early (pre)malignant pancreatic lesions and propose surgical resection with curative intent. The purpose of this screening is to reduce mortality related to PC. While numerous large and retrospective studies have reported on the short-term outcomes of pancreatic screening in HRI, follow-up was generally limited, and hence the magnitude of benefit of pancreatic screening in terms of curative potential remains currently unknown^[11,12,17-19]. Additionally, although screening is usually based on yearly magnetic resonance imaging (MRI) and endoscopic ultrasound (EUS), the role of the latter has not been clearly defined. Our goal was to comprehensively review current data on pancreatic screening and follow-up of HRI, with an emphasis on the role of EUS.

OBJECTIVES AND CHALLENGES OF PANCREATIC SCREENING IN HIGH-RISK INDIVIDUALS

The goal of screening in HRI (history of FPC or pathogenic germline mutations +/- family history of PC) is to reduce PC-related mortality by identifying morphological abnormalities that suggest the development of PC at an early and potentially curative stage^[11,17-19]. In a meta-analysis from our group including all HRI treated by surgery reported in the literature, patients without invasive PC who underwent resection of premalignant lesions had no postoperative recurrence compared to those with invasive PC, and their 3-year overall survival was 100% *vs* 34.6%, respectively ($P < 0.001$)^[11]. The lifetime risk of PC in HRI (with germline mutations or FPC) is estimated to be between 1% and 50% depending on the underlying predisposition and the number of affected relatives^[12,17,20]. **Table 1** presents the risk by mutations and their frequency in inherited cancers. Thus, HRI are theoretically good candidates for pancreatic screening.

The first challenge of PC screening is the effective identification of good candidates, specifically, individuals with a theoretical risk threshold, arbitrarily set at 5%, of developing PC in their lifetime. Signoretti *et al*^[18,21] have shown that the identification of (pre)malignant lesions varies depending on the genetic subgroup (3% in familial PC, 5% in FAMM syndrome, 6.3% in hereditary breast/ovarian cancer, and 12.2% in Peutz-Jeghers syndrome), while it was 42% in patients with hereditary pancreatitis who have the PRSS1 mutation. Corral *et al*^[19] estimated that 135 patients needed to be screened to successfully identify 1 patient with a target lesion (high-risk lesion or PC) (95%CI: 88-303). This low rate was highly questionable, however, due to the very short follow-up period (3.3 years on average) reported in the studies^[22]. Indeed, it contrasts with the delay that was estimated for a premalignant lesion to transform into invasive cancer (11 years) and does not enable the drawing of conclusions regarding the global yield of pancreatic screening in HRI.

Relevant imaging pancreatic abnormalities are identified at imaging in approximately 50% of HRI, but this figure is difficult to interpret as there have been too few correlations of these imaging abnormalities with pathological examination due to the limited number of operated patients^[11,18,23]. Another challenge of pancreatic screening is to identify and use the most appropriate screening techniques. Ideally, this would be the least invasive and reproducible technique that identifies the greatest number of premalignant lesions and that is the most acceptable for the patient.

The ultimate goal of this approach is to propose surgical resection of premalignant lesions [such as pancreatic intraepithelial neoplasia (PanIN) or intraductal papillary mucinous neoplasms (IPMN) with high-grade dysplasia (HGD)] or even early-stage invasive PC, which are found in approximately 3%-5% of HRI^[11,19]. Finally, identifying lesions at high risk of (pre)malignancy and operating neither too early (low-grade dysplasia) nor too late (advanced PC) is challenging^[17]. We recently found that an indication for prophylactic pancreatectomy was appropriate (based on identification of HGD or invasive PC) in 42.2% of surgically treated HRI^[11]. The factors predicting surgical appropriateness were age > 50 years, presence of a germline mutation and the presence of high-risk radiological pancreatic abnormalities (the presence of "worrisome features", "high-risk stigmata of malignancy", or a solid pancreatic mass)^[11].

WHAT IS THE BEST SCREENING MODALITY FOR HIGH-RISK INDIVIDUALS?

In the past two decades, management of HRI has evolved and varies from one country to another. Screening should be performed in multidisciplinary teams in referral centres, which have more experience and expertise in screening methods (i.e., EUS and MRI) and in the treatment of invasive PC^[17]. A recent meta-analysis estimated that the annual prevalence of high-risk lesions (early invasive PC, IPMN, or PanIN with HGD) detected in HRI was 3.3%, corresponding to 5/1000 person-years during follow-up and an individual probability of 0.5% per year^[18].

The screening of HRI is mainly based on pancreatic morphological imaging [computed tomography (CT) scan, MRI and EUS]^[11,12,18,19]. For a long time, many studies have suggested that EUS might provide better detection of small solid lesions, while MRI can identify small cystic lesions^[24-27]. In the study by Canto *et al*^[25] in 216 HRI, EUS, MRI and CT scan detected pancreatic abnormalities (cysts, solid lesions or chronic pancreatitis) in 42.6%, 33.3% and 11% of patients, respectively. This corresponded to a sensitivity of 93% for EUS for the detection of solid lesions smaller than 2 cm compared to 53% and 67% for CT scan and MRI, respectively^[25]. Harinck *et*

Table 1 Risk of pancreatic cancer based on genetic mutations

Condition	Gene	Relative risk of PC compared to the general population	Risk of pancreatic cancer at 70 yr (%)	% Among inherited cancers
No family history		1	0.5-1	?
2 first degree relatives with PC	Unknown	5-7	5-12	80-85
3 first degree relatives with PC	Unknown	32	40	
Hereditary breast ovarian cancer syndrome	BRCA1	2-4	3-4	1-5
	BRCA2	2-10	4-5	5-20
Genetic pancreatitis	PRSS1	50-80	40-55	1-4
FAMMM	CDKN2A	10-25	5-25	2-3
Peutz-Jeghers syndrome	STK11	100-130	30-40	1-3
Lynch syndrome	MLH1, MSH2, MSH6, PMS2	4-8	3-5	1-3

PC: pancreatic cancer; FAMMM: Familial atypical multiple mole melanoma.

al^[27] performed a prospective comparison of EUS and MRI for the detection of clinically relevant pancreatic lesions at initial screening of 139 HRI. In this study, EUS and/or MRI detected pancreatic lesions in 6% of HRI: 2 solid tumours < 10 mm were only detected by EUS (1 invasive PC and 1 PanIN with low-grade dysplasia), and 25% of cysts were only detected by MRI^[27]. Nevertheless, as all patients were not operated on, this study does not enable the evaluation of whether the lesions detected were all of pathological relevance. Table 2 reports the main characteristics of HRI screening techniques and imaging results in 16 published studies. Of note, MRI and CT scan protocols were not clearly described in most studies (*e.g.*, matrix size, contrast enhancement, MRI sequences), and the results of EUS are well known to be operator-dependent as well as classical radiological procedures^[28,29]. Indeed, Topazian *et al*^[28] report a low interobserver agreement for the interpretation of pancreatic EUS in HRI (Kappa < 0.4 except for cysts). This is probably due to the lack of specific training for EUS, the lack of a standardized collection chart and a specific learning curve. Although all of the abovementioned studies included operated patients, the methods of detection of the pancreatic abnormalities that determined the surgical procedure were not described in detail. Thus, while the precise value of EUS compared to the other modalities is probably high (it may find more (pre)malignant lesions), this is difficult to determine in the absence of a large study correlating anatomopathological specimens to EUS findings.

There are no approved biomarkers for the screening of PC in HRI. Only one study has reported the results of serum CA19-9 measurement for pancreatic screening in these patients. Twenty-seven out of 546 included patients (4.9%) had elevated CA19-9, and 5 (18.5%) of these had pancreatic lesions (1 PC, 2 IPMN, 1 PanIN, 1 neuroendocrine tumour). Nevertheless, the number of pancreatic lesions in the group with normal CA 19-9 levels was not reported^[16]. CA19-9 is not recommended because of its low sensitivity and specificity^[11,17-19,30].

The recent CAPS (International Cancer of the Pancreas Screening) consensus has suggested that annual MRI [including magnetic resonance cholangio-pancreatography (MRCP)] and EUS are the best imaging modalities for the detection of significant PC precursor lesions^[6]. In summary, and as recommended by the recent statement by the American Society of Clinical Oncology, pancreatic screening and follow-up in HRI should be based on MRI and EUS as complementary tests for the detection of pancreatic lesions^[17].

WHEN AND HOW OFTEN SHOULD SCREENING BE PERFORMED?

While pancreatic screening usually begins when HRI are 40 years old, or 10 years before the youngest index case^[23], this has recently been challenged because pancreatic screening rarely reveals relevant lesions before the age of 50^[4]. We also recently reported that the risk of HGD or invasive cancer was 3 times higher in HRI > 50 years old operated on for pancreatic lesions than in HRI < 50 years old^[11].

Table 2 Main characteristics of high-risk individuals for pancreatic cancer in the different studies

First author/yr	Setting	High risk condition	Patients included	Modalities of screening	Imaging results	Patients operated on	Operated lesions seen only by the EUS	Histological features with cancer or HGD
Brentnall <i>et al</i> ^[37]	Prospective, monocentric	FPC	14	EUS	CPis: 10 (77%) Cystic lesion: ? Solid lesion: 6 (46%)	7	¹ NA	7 dysplasia
Rulyak <i>et al</i> ^[38]	Prospective, monocentric	FPC	35	EUS, ERCP	12 lesions	12	?	12 dysplasia
Kimmey <i>et al</i> ^[78]	Prospective, monocentric	FPC	46	EUS, ERCP	CPis: 24 (52%) Cystic lesion: ? Solid lesion: 12 (26%)	?	?	?
Canto <i>et al</i> ^[12]	Prospective, monocentric	FPC, PJS,	38	EUS first, +/- ERCP, CT, FNA	CPis: 17 (45%) Cystic lesion: ? Solid lesion: 12 (31%)	7	2/7 (1 PC, 1 PanIN3)	1 PC 1 PanIN3
Canto <i>et al</i> ^[23]	Prospective, monocentric	FPC, PJS,	78	EUS, CT +/- ERCP, FNA	CPis: 61 (78%) Cystic lesion: 9 (12%) Solid lesion: 8 (10%)	7	3/7 (1 PanIN 3, 2 PanIN1-2)	1 PC+IPMN 1 PanIN3 1PanIN3+IPMN
Poley <i>et al</i> ^[13]	Prospective, multicentric	FPC, PJS, FAMMM, FBOC, HP, LFS	44	EUS	CPis: 3 (7%) Cystic lesion: 7 (16%) Solid lesion: 3 (7%)	10	¹ NA	3 PC
Langer <i>et al</i> ^[15]	Prospective, multicentric	FPC, FAMMM	76	EUS + MRI	CPis: 17 (22%) Cystic lesion: 3 (4%) Solid lesion: 7 (9%)	7	5/7 (9/21 non operated lesions seen only in EUS)	0 PC or PanIN3 or IPMN with HGD
Verna <i>et al</i> ^[33]	Prospective, monocentric	FPC, FBOC	51	EUS <i>n</i> = 31 or MRI <i>n</i> = 33 +/- ERCP, FNA	CPis: 9 (29%) Cystic lesion: 12 (39%) Solid lesion: 2 (6%)	5	?(2 solid lesions in EUS and MRI)	1 PC 1 PanIN2
Ludwig <i>et al</i> ^[34]	Prospective, monocentric	FPC	109	MRCP or CT EUS, FNA	18 lesions	6	?	1 PC 2 MD IPMN 1 PanIN-3 1 PanIN-2
Schneider <i>et al</i> ^[40]	Prospective, monocentric	FPC, FAMMM	72	EUS, MRI	13 lesions	9	?	1 PC 1 PanIN-3
Zubarik <i>et al</i> ^[16]	Prospective, monocentric	FPC, PJS, BRCA2	27	CA19-9 +/- EUS (27/546)	5 lesions	5	¹ NA	1 PC
Canto <i>et al</i> ^[25]	Prospective, multicentric	FPC, FBOC, PJS	216	CT, EUS, MRI/MRCP	CPis: 54 (25%) Cystic lesion: 79 (36%) Solid lesion: 3 (1.4%)	5	?(20/216 non operated lesions seen only in EUS including 3 solid lesion)	2 MD-IPMN 1 IPMN+PanIN3
Al-Sukhni <i>et al</i> ^[32]	Prospective, monocentric	FPC, BRCA1/2, FAMMM, LKB1	252	MRI, +/- CT, EUS, ERCP	CPis: ? Cystic lesion: 80 (32%) Solid lesion: 3 (1.2%)	4		3 PC
Sud <i>et al</i> ^[14]	Prospective, monocentric	FPC, BRCA1/2, MMR, CDKN2A, LKB1, PRSS1	30	EUS +/- FNA	3 lesions	3	¹ NA	2 PC
Mocci <i>et al</i> ^[10]	Prospective, multicentric	FPC, CDKN2A, MMR, PRSS1	41	EUS, CT +/- MRI, FNA	CPis: 15 (37%) Cystic lesion: 4 (10%) Solid lesion: 2 (5%)	1	² NA	1 NET 1 PanIN3
Vasen <i>et al</i> ^[31]	Prospective, multicentric	FPC, CDKN2A, BRCA 1/2	411	MRI, EUS, CT, FNA	CPis: ? Cystic lesion: 138 (34%) Solid lesion: 16 (4%)	30	2/30 (866 MRIs and 106 EUS performed)	16 PC 3 PanIN3 1 IPMN with high grade

Bartsch <i>et al</i> ^[4]	Prospective, multicentric	FPC, BRCA1/2, 234 PALB2	MRI, EUS, CT, FNA	CPis: ? Cystic lesion: 125 (49%) Solid lesion: 9 (4%)	21 6/253 (2%) lesions (2 malignant and HGD)	?	2 PC 3 PanIN3 1 IPMN with HGD; multifocal PanIN2±BD-IPMN±AFL 1 NET 8 PanIN-2
Harinck <i>et al</i> ^[27]	Prospective, multicentric	FPC, BRCA1/2, 139 CDKN2A, LKB1, TP53, MMR	MRI +/- EUS	CPis: 41 (30%) Cystic lesion: 67 (48%) Solid lesion: 2 (1.4%)	2	2/2 (1 PC, 1 PanIN-2)	1 PC 1 PanIN-2

¹NA: Not applicable, because patients had only endoscopic ultrasound (EUS);

²NA: Not applicable, because patients had an EUS only if magnetic resonance imaging was abnormal. Three patients developed pancreatic cancer during the screening. CPis: Chronic-pancreatitis-like parenchymal changes; CT: Computed tomography; EUS: Endoscopic ultrasound; FNA: Fine needle aspiration; FPC: Familial pancreatic cancer; IPMN: Intraductal papillary mucinous neoplasm; MRI: Magnetic resonance imaging; PanIN: Pancreatic intraepithelial neoplasia; PC: Pancreatic cancer; ERCP: Endoscopic retrograde cholangiopancreatography; HGD: High-grade dysplasia.

It is important to note that the majority of relevant pancreatic lesions (> 50% of cysts and solid tumours) are identified at the first screening rather than during follow-up^[23,31,32]. The frequency of subsequent follow-up examinations varies depending on different studies and recommendations^[4,30-34]. Several multicenter studies have compared different surveillance protocols (e.g., annual MRI and EUS or annual MRI with EUS every 3 years) and did not find any difference in terms of number of diagnosed lesions^[4,31]. However, these studies compared the total number of diagnosed lesions, whereas only the number of (pre)malignant lesions would have had clinical relevance. Nevertheless, and unless demonstrated otherwise, it seems reasonable to perform one MRI and one EUS examination per year in HRI^[11,19,31,32].

Life-long pancreatic follow-up is recommended in HRI, at least as long as patients remain fit for surgery, without severe comorbidities. In fact, there are no strong data to confirm when follow-up should be stopped^[17,23]. Furthermore, the prognosis in another group at risk of PC (patients with IPMN) was poorer in patients who stopped surveillance after 5 years of surveillance, which advocates for prolonged surveillance^[35].

PLACE OF ENDOSCOPIC ULTRASOUND FOR PANCREATIC SCREENING OF HIGH-RISK INDIVIDUALS

Pancreatic lesions found in endoscopic ultrasound

EUS pancreatic screening may identify pancreatic abnormalities in 19% to 79% of HRI (13–16, 25, 31, 34, 35, 37–40) (Table 2). These pancreatic “abnormalities” include cystic lesions (13%–49%) (Figures 1 and 2), chronic pancreatitis-like parenchymal changes (14%–77%) (Figure 3) and solid lesions (0%–46%) (Figure 4), which are always considered suspicious^[4,10,18,23,26,27,39,40]. Of note, most studies that reported a low rate of EUS-detected abnormalities did not consider chronic pancreatitis-like parenchymal changes.

Pancreatic cystic lesions identified in HRI are mainly IPMN, which are more frequent in HRI (13%–20%) than in the general population (1%–5%)^[18,26,41,42]. Whether IPMN in HRI have a different course than sporadic ones is unknown, and hence their monitoring could be similar by analogy with the general population. First, the initial characterization of IPMN should search for potential high-risk stigmata (obstructive jaundice associated with cystic lesions of the head of the pancreas, enhancing mural nodules > 5 mm, main pancreatic duct > 10 mm) and worrisome features (pancreatitis, cyst > 3 cm, enhancing mural nodule < 5 mm, thickened/enhancing cyst walls, main duct size 5–9 mm, abrupt change in calibre of pancreatic duct with distal pancreatic atrophy, lymphadenopathy, increased CA19-9 serum levels, and cyst growth rate > 5 mm per 2 years)^[43,44]. These features are highly important for deciding on surgery because their presence is associated with an increased probability of finding invasive PC or HGD on the resected specimen^[11]. EUS has been shown to be the best technique for the early detection of malignancy in patients with IPMN^[45]. Nevertheless, the entire pancreatic parenchyma is at risk of PC, which can occur away from the cysts^[46]. Thus, surveillance should not focus on pancreatic cysts alone. However, all cystic lesions found in HRI are not IPMN (but may be other benign cysts such as serous cystadenomas)^[15,30,31]. Nevertheless, in the absence of specific worrisome criteria for non-IPMN cystic pancreatic lesions, it seems appropriate to use the abovementioned worrisome features for all cystic lesions, while it may lead to operating on benign

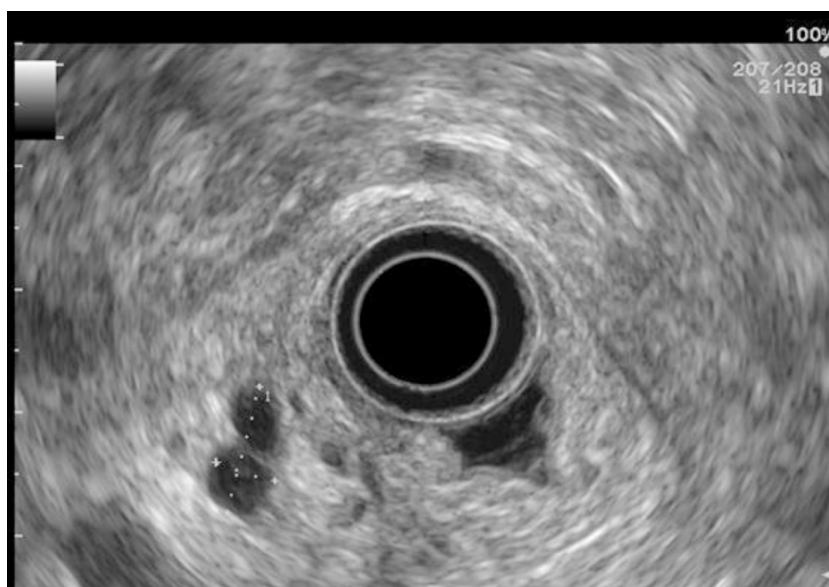


Figure 1 Pancreatic cystic lesion: Intraductal papillary mucinous neoplasm.

cysts without potential pejorative evolution^[11].

Chronic-pancreatitis-like parenchymal changes (CPis) are more common in HRI (up to 67%-80%) than in the general population (15%-17%)^[12,23,47-49]. The diagnostic criteria for chronic pancreatitis with EUS (Rosemont Criteria) include major criteria (hyperechoic foci with shadowing and main pancreatic duct calcification, a lobularity with honeycombing) and minor criteria (small cysts, dilated ducts ≥ 3.5 mm, irregular pancreatic ducts, dilated side branches ≥ 1 mm, hyperechoic duct walls, strands, non-shadowing hyperechoic foci, and lobularity with noncontiguous lobules)^[50]. Chronic-pancreatitis-like parenchymal atrophy and hyperechoic foci may correspond to multifocal PanIN^[51-54]. Brune *et al*^[51] reported a significant correlation between CPis on EUS and percentage of PanIN lesions on surgical specimens. The supposed explanation is that multifocal PanIN lesions produce obstructive lobular atrophy, which is probably the source of CPis^[53]. Features of chronic pancreatitis during EUS-based surveillance of HRI are easily seen with good interobserver agreement^[48]. One study showed that CPis generally have no or little progression over time, although the follow-up period was limited (3 years)^[48]. A fatty pancreas has also been reported to be a risk factor for PC and should be noted on the EUS report^[55].

Finally, EUS can identify solid pancreatic lesions in up to 20% of HRI during follow-up. These solid tumours are generally PC but may also be PanIN with HGD or neuroendocrine tumours^[10,11,15,26,31,32,40]. In published studies, 14/53 (26%) of operated significant lesions (for which MRI and EUS data were available) were only seen on EUS (Table 1)^[12,15,23,27,31]. However, as previously reported, 7/26 HRI operated on for a "pancreatic mass" (27%) had lesions with no/low malignant potential on the pathological specimen^[11]. Nevertheless, it is difficult to consider not operating on an HRI with a "pancreatic mass" identified during EUS screening^[11]. As discussed below, lesion sampling may be of special interest in this setting.

Endoscopic ultrasound pancreatic screening techniques in high-risk individuals

A study by Shin *et al*^[29] suggested that compared to radial EUS, linear-array EUS improves the detection of pancreatic lesions in HRI, probably due to better visualization of the pancreatic tail. This same study reported a "second-pass effect" with additional lesions detected during a second EUS examination^[29].

The use of contrast-enhanced harmonic EUS (CH-EUS) could improve its diagnostic performance. Indeed, it can identify solid neoplastic components in pancreatic cysts/IPMN as hyperenhanced lesions (Figure 5)^[56]. The pooled sensitivity and specificity of CH-EUS for the diagnosis of PC are very high (91% and 87%, respectively) in the general population with solid pancreatic neoplasms^[56,57]. Nevertheless, there is no specific study on the use of CH-EUS for pancreatic screening in HRI.

EUS elastography could also be useful for the characterization of solid pancreatic lesions in this population^[58]. Iglesias-Garcia *et al*^[59] reported a sensitivity, a specificity, and positive and negative predictive values of 100%, 85.5%, 90.7%, and 100%, respectively, for the diagnosis of sporadic PC.

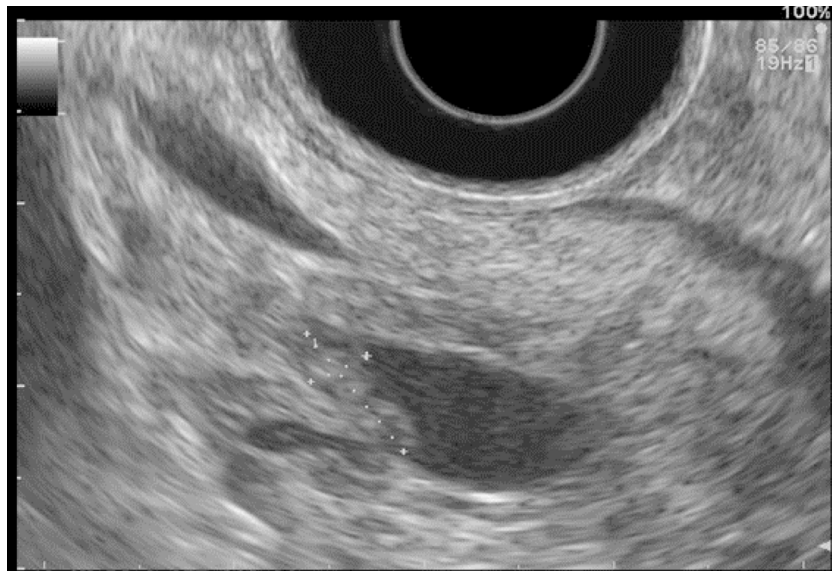


Figure 2 Intraductal papillary mucinous neoplasm with mural nodule.

The results of certain new techniques for the detection of (pre)malignant pancreatic lesions are especially promising in HRI, including the molecular imaging of cathepsin E *in vivo* using a confocal laser endomicroscopy miniprobe (overexpression of cathepsin E in PanIN) and the detection of DNA abnormalities or protein markers in pancreatic cyst fluid collected by fine needle aspiration (FNA) (mutations in genes such as *TP53*) (Figure 6)^[57,60-63]. The role of these combined strategies (EUS with other new technological/biological techniques) as well as their impact on survival and cost-effectiveness must, however, still be defined^[64]. Finally, another lead could also be the identification of molecular abnormalities (p53 mutations, *KRAS* mutations, DNA methylation markers) associated with the presence of PC and precursors of PC within pancreatic fluid collected by endoscopic retrograde cholangiopancreatography^[65-69]. The role of these exams in FPC screening strategies must still be defined^[68].

Endoscopic ultrasound-guided fine needle aspiration and fine needle biopsy

Another advantage of EUS is that FNA or fine needle biopsy (FNB) can be performed in solid pancreatic masses to obtain tissue samples for histopathological characterization with a low risk of complications^[11,14,23,33,70]. The complication rate of EUS-FNA is approximately 2%^[70]. The sensitivity (84.3%), specificity (97%), and accuracy (84%) of EUS-FNA for solid pancreatic masses are high^[71]. However, the negative predictive value is low (64%)^[26,71], indicating that a negative FNA does not exclude the presence of a (pre)malignant lesion. Thus, in the presence of a solid pancreatic lesion with negative histological samples, FNA (or FNB) must be repeated in HRI, and prophylactic pancreatotomy should be discussed. The use of cutting needles for EUS-FNB should improve pancreatic histological samples^[72]. In addition, EUS-FNA is associated with a non-negligible rate of false positives (2% in the literature, up to 33% in HRI, especially in patients with CPis). Thus, the diagnostic value of FNA may be limited in HRI screening^[11].

IMPROVING THE DETECTION OF HIGH-GRADE PANIN IN HIGH-RISK INDIVIDUALS

The theoretical risk of hereditary transmission of PC-predisposing genetic abnormalities is up to 50%. Hence, in the setting of FPC without a known predisposing gene mutation, approximately 50% of HRI undergo screening theoretically without predisposing genetic abnormalities. Thus, the detection of any cystic lesions or CPis is important in FPC-related HRI without identified mutations because it probably indicates that this subject carries the unidentified mutation and is hence at risk of PC.

Most PC arise from PanIN lesions, with a delay of approximately ten years^[22]. The challenge of screening is being able to propose surgery at the stage of high-grade PanINs. Some aspects of high-grade PanINs have been described with MRI and EUS, but these lesions lack specificity^[23,51,73]. Our group and others previously reported that



Figure 3 Chronic-pancreatitis-like parenchymal changes.

CPis (microcysts and/or hyperechoic foci of fibrosis) visualized at EUS were associated with PanIN (in up to 83% of cases)^[51,54,74]. In an American study, the odds ratio for the association between intermediate-grade PanIN and hyperechoic foci without shadowing in the pancreas head was 8.5 ($P = 0.05$)^[74]. This aspect would concern approximately 70% of HRI^[12,23]. However, the assessment of such abnormalities might suffer from a lack of recognition, and the correlation between EUS aspect and pathology should be assessed in a large series of HRI^[28,60].

Several studies have reported an increased risk of PC in patients with pancreatic cysts, whatever the etiology^[73-75]. In some cases, and especially in HRI, MRI with MRCP and diffusion-weighted MR sequences can help identify very small cysts that do not communicate with the pancreatic ducts^[73,74]. In a recent MRI study that included 100 patients, our group recently showed that the identification of non-communicating pancreatic microcysts had a 52.3% sensitivity, a 77.1% specificity, and a 61% accuracy for the diagnosis of PanIN^[73]. In the same study, the association of global atrophy and non-communicating microcysts increased the predictive risk of PanIN. Interobserver agreement for the presence of microcysts was excellent with MRI (kappa = 0.92)^[73].

PSYCHOLOGICAL IMPACT OF PANCREATIC SCREENING

The psychological burden in HRI of PC is significant because of the patient's level of risk and his/her experience with close relatives suffering from this severe disease^[15]. Patients must be informed that the aim of screening is to identify premalignant lesions or early invasive PC to propose a pancreatectomy with prophylactic and/or curative intent. Additionally, they must be informed of the potential benefits (avoiding the development of PC, being treated at a curable stage, or at least diagnosing PC at the earliest stage possible and prolonging survival) and risks (related to general anaesthesia and/or EUS and especially FNA, unnecessary pancreatic surgery with a risk of complications and diabetes) of pancreatic screening^[17]. Moreover, because the sensitivity of the different imaging examinations is not 100%, patients must be informed of the risk of missing (pre)malignant lesions and developing advanced PC during follow-up intervals.

Several studies have investigated the psychological burden of pancreatic screening and repeated examinations. Overall, pancreatic screening may have a positive psychological impact on HRI^[76]. Konings *et al*^[48] reported a low psychological burden due to the examinations themselves, which were considered uncomfortable only in 10% of cases. Of note, although it is an invasive procedure, EUS was generally not considered to be more uncomfortable than MRI^[48,76].

COST-EFFECTIVENESS OF PANCREATIC SCREENING IN

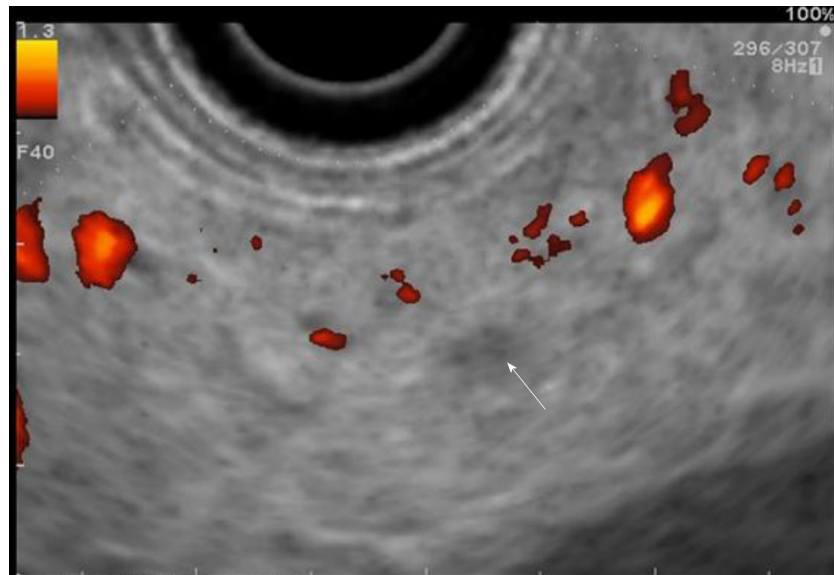


Figure 4 Small hypoechoic nodule.

HIGH-RISK INDIVIDUALS

It is difficult to assess the cost-effectiveness of pancreatic screening in HRI because of the different screening practices in different countries and the results of screening in different studies^[10,11,17,18,23,24,40]. A screening test can generally be considered acceptable if there is a positive benefit/cost ratio. Rulyak *et al*^[38] compared one-time EUS-based screening to no screening in a hypothetical cohort of 100 HRI. They showed that screening increased life expectancy (38 years) in a cost-effective manner (\$ 16885 per life-year saved). Latchford *et al*^[77] created a model that showed that seven PCs would theoretically be detected in 250 patients who would undergo yearly EUS between the age of 40 and 55 years old. The cost would be \$ 164.285 dollars per PC detected and \$ 372708 per life saved. Overall, it is not clear whether EUS-based screening can be considered cost-effective^[60].

CONCLUSION

PC is inherited in 5%-10% of cases. HRI of PC can benefit from pancreatic screening mainly based on annual MRI and EUS. Successful screening targets are early invasive PC and IPMN or PanIN with HGD, which may be treated surgically with curative intent. These lesions are identified in 2% to 5% of all HRI undergoing screening. EUS appears to be the best examination to identify small solid lesions and is complementary to MRI, whose performance may be higher for identifying small cystic lesions. Pancreatic abnormalities found by EUS are cystic lesions (13%-49% of HRI), solid lesions (0%-46%) and chronic pancreatitis-like parenchymal changes (> 50%). Of note, the latter frequently correspond to PanIN lesions. Finally, CH-EUS, EUS-elastography and other new techniques (including needle-based confocal laser endomicroscopy miniprobe and the detection of DNA abnormalities or protein markers by FNA) are being developed, but further studies are needed to evaluate their role in the management of HRI. There is still limited evidence on the accuracy, acceptability and cost of screening as it is currently recommended. HRI undergoing screening should continue to be included in large cohorts, such as the CAPS consortium (<http://caps-registry.com>), which is a major opportunity to improve PC screening.

Areas of currently unmet needs within the scope of hereditary PC include the following: (1) To constitute large cohorts of HRI undergoing long-term prospective follow-up; (2) To study the correlation between the pancreatic abnormalities identified at imaging (MRI and EUS) and the lesions identified at the pathological examination of surgically resected specimens; (3) To develop specific EUS and MRI training modules to improve the recognition of pancreatic lesions in HRI and interobserver agreement; (4) To develop new techniques such as biomarkers or new nuclear imaging techniques; and (5) To study more comprehensively the consequences of screening in terms of cost-effectiveness, psychological burden, and

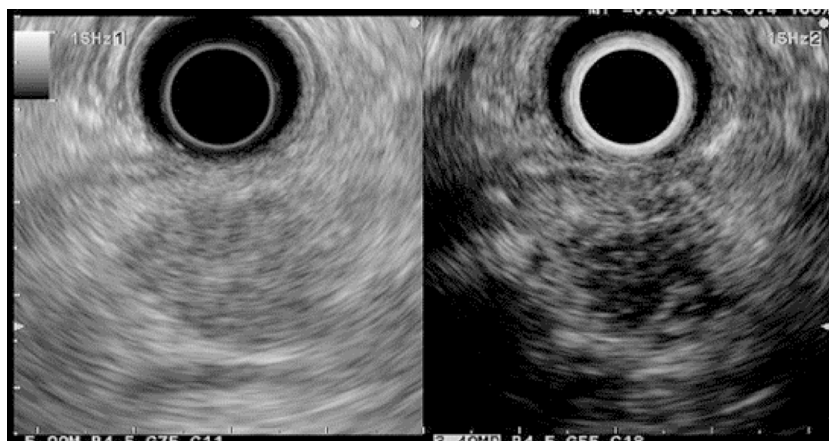


Figure 5 Contrast-enhanced harmonic in endoscopic ultrasound: Hypoechoic suspect nodule.

long-term surgical consequences in operated HRI.

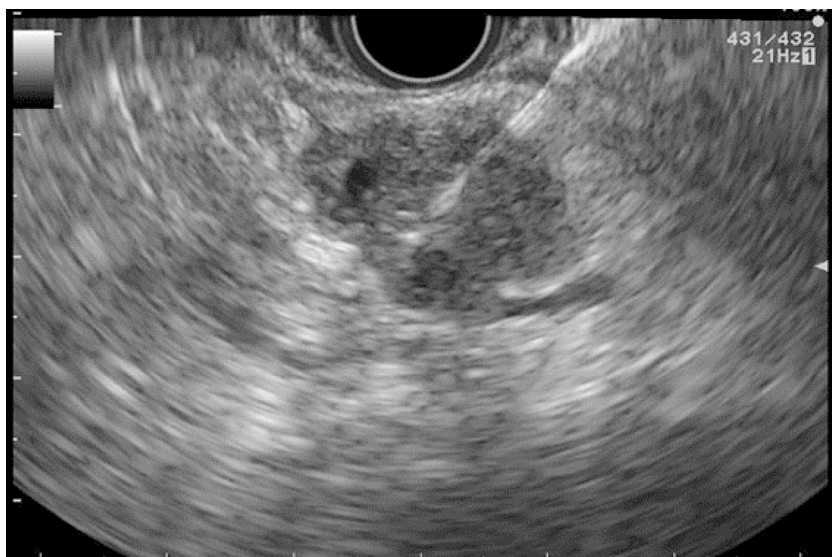


Figure 6 Fine needle aspiration of a solid pancreatic lesion.

REFERENCES

- 1 **Rahib L**, Smith BD, Aizenberg R, Rosenzweig AB, Fleshman JM, Matrisian LM. Projecting cancer incidence and deaths to 2030: the unexpected burden of thyroid, liver, and pancreas cancers in the United States. *Cancer Res* 2014; **74**: 2913-2921 [PMID: [24840647](#) DOI: [10.1158/0008-5472.CAN-14-0155](#)]
- 2 **Neuzillet C**, Tijeras-Raballand A, Bourget P, Cros J, Couvelard A, Sauvanet A, Vullierme MP, Tournigand C, Hammel P. State of the art and future directions of pancreatic ductal adenocarcinoma therapy. *Pharmacol Ther* 2015; **155**: 80-104 [PMID: [26299994](#) DOI: [10.1016/j.pharmthera.2015.08.006](#)]
- 3 **Harinck F**, Poley JW, Kluijt I, Fockens P, Bruno MJ; Dutch Research Group of Pancreatic Cancer Surveillance in High-Risk Individuals. Is early diagnosis of pancreatic cancer fiction? Surveillance of individuals at high risk for pancreatic cancer. *Dig Dis* 2010; **28**: 670-678 [PMID: [21088419](#) DOI: [10.1159/000320095](#)]
- 4 **Bartsch DK**, Slater EP, Carrato A, Ibrahim IS, Guillen-Ponce C, Vasen HF, Matthäi E, Earl J, Jendryschek FS, Figiel J, Steinkamp M, Ramaswamy A, Vázquez-Sequeiros E, Muñoz-Beltrán M, Montans J, Mocci E, Bonsing BA, Wasser M, Klöppel G, Langer P, Fendrich V, Gress TM. Refinement of screening for familial pancreatic cancer. *Gut* 2016; **65**: 1314-1321 [PMID: [27222532](#) DOI: [10.1136/gutjnl-2015-311098](#)]
- 5 **Stoffel EM**. Screening in GI Cancers: The Role of Genetics. *J Clin Oncol* 2015; **33**: 1721-1728 [PMID: [25918283](#) DOI: [10.1200/JCO.2014.60.6764](#)]
- 6 **Canto MI**, Harinck F, Hruban RH, Offerhaus GJ, Poley JW, Kamel I, Nio Y, Schulick RS, Bassi C, Kluijt I, Levy MJ, Chak A, Fockens P, Goggins M, Bruno M; International Cancer of Pancreas Screening (CAPS) Consortium. International Cancer of the Pancreas Screening (CAPS) Consortium summit on the management of patients with increased risk for familial pancreatic cancer. *Gut* 2013; **62**: 339-347 [PMID: [23135763](#) DOI: [10.1136/gutjnl-2012-303108](#)]
- 7 **Kastrinos F**, Mukherjee B, Tayob N, Wang F, Sparr J, Raymond VM, Bandipalliam P, Stoffel EM, Gruber SB, Syngal S. Risk of pancreatic cancer in families with Lynch syndrome. *JAMA* 2009; **302**: 1790-1795 [PMID: [19861671](#) DOI: [10.1001/jama.2009.1529](#)]
- 8 **Giardiello FM**, Brensinger JD, Tersmette AC, Goodman SN, Petersen GM, Booker SV, Cruz-Correa M, Offerhaus JA. Very high risk of cancer in familial Peutz-Jeghers syndrome. *Gastroenterology* 2000; **119**: 1447-1453 [PMID: [11113065](#) DOI: [10.1053/gast.2000.20228](#)]
- 9 **Hu C**, Hart SN, Polley EC, Gnanaolivu R, Shimelis H, Lee KY, Lilyquist J, Na J, Moore R, Antwi SO, Bamlet WR, Chaffee KG, DiCarlo J, Wu Z, Samara R, Kasi PM, McWilliams RR, Petersen GM, Couch FJ. Association Between Inherited Germline Mutations in Cancer Predisposition Genes and Risk of Pancreatic Cancer. *JAMA* 2018; **319**: 2401-2409 [PMID: [29922827](#) DOI: [10.1001/jama.2018.6228](#)]
- 10 **Mocci E**, Guillen-Ponce C, Earl J, Marquez M, Solera J, Salazar-López MT, Calcedo-Arnáiz C, Vázquez-Sequeiros E, Montans J, Muñoz-Beltrán M, Vicente-Bártulos A, González-Gordaliza C, Sanjuanbenito A, Guerrero C, Mendía E, Lisa E, Lobo E, Martínez JC, Real FX, Malats N, Carrato A. PanGen-Fam: Spanish registry of hereditary pancreatic cancer. *Eur J Cancer* 2015; **51**: 1911-1917 [PMID: [26212471](#) DOI: [10.1016/j.ejca.2015.07.004](#)]
- 11 **de Mestier L**, Muller M, Cros J, Vullierme M-P, Vernerey D, Maire F, Dokmak S, Rebours V, Sauvanet A, Lévy P, Hammel P. Appropriateness of pancreatic resection in high-risk individuals for familial pancreatic ductal adenocarcinoma: a patient-level meta-analysis and proposition of the Beaujon score. *United Eur Gastroenterol J* 2019; **7**: 358-368 [PMID: [31019704](#) DOI: [10.1177/2050640618824910](#)]
- 12 **Canto MI**, Goggins M, Yeo CJ, Griffin C, Axilbund JE, Brune K, Ali SZ, Jagannath S, Petersen GM, Fishman EK, Piantadosi S, Giardiello FM, Hruban RH. Screening for pancreatic neoplasia in high-risk individuals: an EUS-based approach. *Clin Gastroenterol Hepatol* 2004; **2**: 606-621 [PMID: [15224285](#) DOI: [10.1016/S1542-3565\(04\)00244-7](#)]
- 13 **Poley JW**, Kluijt I, Gouma DJ, Harinck F, Wagner A, Aalfs C, van Eijck CH, Cats A, Kuipers EJ, Nio Y, Fockens P, Bruno MJ. The yield of first-time endoscopic ultrasonography in screening individuals at a high risk of developing pancreatic cancer. *Am J Gastroenterol* 2009; **104**: 2175-2181 [PMID: [19491823](#) DOI: [10.1038/ajg.2009.276](#)]

- 14 **Sud A**, Wham D, Catalano M, Guda NM. Promising outcomes of screening for pancreatic cancer by genetic testing and endoscopic ultrasound. *Pancreas* 2014; **43**: 458-461 [PMID: [24622079](#) DOI: [10.1097/MPA.0000000000000052](#)]
- 15 **Langer P**, Kann PH, Fendrich V, Habbe N, Schneider M, Sina M, Slater EP, Heverhagen JT, Gress TM, Rothmund M, Bartsch DK. Five years of prospective screening of high-risk individuals from families with familial pancreatic cancer. *Gut* 2009; **58**: 1410-1418 [PMID: [19470496](#) DOI: [10.1136/gut.2008.171611](#)]
- 16 **Zubarik R**, Gordon SR, Lidofsky SD, Anderson SR, Pipas JM, Badger G, Ganguly E, Vecchio J. Screening for pancreatic cancer in a high-risk population with serum CA 19-9 and targeted EUS: a feasibility study. *Gastrointest Endosc* 2011; **74**: 87-95 [PMID: [21704809](#) DOI: [10.1016/j.gie.2011.03.1235](#)]
- 17 **Stoffel EM**, McKernin SE, Khorana AA. Evaluating Susceptibility to Pancreatic Cancer: ASCO Clinical Practice Provisional Clinical Opinion Summary. *J Oncol Pract* 2019; **15**: 108-111 [PMID: [30589608](#) DOI: [10.1200/JOP.18.00629](#)]
- 18 **Signoretti M**, Bruno MJ, Zerboni G, Poley JW, Delle Fave G, Capurso G. Results of surveillance in individuals at high-risk of pancreatic cancer: A systematic review and meta-analysis. *United European Gastroenterol J* 2018; **6**: 489-499 [PMID: [29881603](#) DOI: [10.1177/2050640617752182](#)]
- 19 **Corral JE**, Mareth KF, Riegert-Johnson DL, Das A, Wallace MB. Diagnostic Yield From Screening Asymptomatic Individuals at High Risk for Pancreatic Cancer: A Meta-analysis of Cohort Studies. *Clin Gastroenterol Hepatol* 2019; **17**: 41-53 [PMID: [29775792](#) DOI: [10.1016/j.cgh.2018.04.065](#)]
- 20 **Das KK**, Early D. Pancreatic Cancer Screening. *Curr Treat Options Gastroenterol* 2017; **15**: 562-575 [PMID: [28879469](#) DOI: [10.1007/s11938-017-0149-8](#)]
- 21 **Rebours V**, Lévy P, Mosnier JF, Scoazec JY, Soubeyrand MS, Fléjou JF, Turlin B, Hammel P, Ruszniewski P, Bedossa P, Couvelard A. Pathology analysis reveals that dysplastic pancreatic ductal lesions are frequent in patients with hereditary pancreatitis. *Clin Gastroenterol Hepatol* 2010; **8**: 206-212 [PMID: [19765677](#) DOI: [10.1016/j.cgh.2009.09.009](#)]
- 22 **Yachida S**, Jones S, Bozic I, Antal T, Leary R, Fu B, Kamiyama M, Hruban RH, Eshleman JR, Nowak MA, Velculescu VE, Kinzler KW, Vogelstein B, Iacobuzio-Donahue CA. Distant metastasis occurs late during the genetic evolution of pancreatic cancer. *Nature* 2010; **467**: 1114-1117 [PMID: [20981102](#) DOI: [10.1038/nature09515](#)]
- 23 **Canto MI**, Goggins M, Hruban RH, Petersen GM, Giardiello FM, Yeo C, Fishman EK, Brune K, Axilbund J, Griffin C, Ali S, Richman J, Jagannath S, Kantsevoy SV, Kalloo AN. Screening for early pancreatic neoplasia in high-risk individuals: a prospective controlled study. *Clin Gastroenterol Hepatol* 2006; **4**: 766-81; quiz 665 [PMID: [16682259](#) DOI: [10.1016/j.cgh.2006.02.005](#)]
- 24 **Yasuda I**, Iwashita T, Doi S, Nakashima M, Moriwaki H. Role of EUS in the early detection of small pancreatic cancer. *Dig Endosc* 2011; **23** Suppl 1: S22-25 [PMID: [21535195](#) DOI: [10.1111/j.1443-1661.2011.01113.x](#)]
- 25 **Canto MI**, Hruban RH, Fishman EK, Kamel IR, Schulick R, Zhang Z, Topazian M, Takahashi N, Fletcher J, Petersen G, Klein AP, Axilbund J, Griffin C, Syngal S, Saltzman JR, Morteale KJ, Lee J, Tamm E, Vikram R, Bhosale P, Margolis D, Farrell J, Goggins M; American Cancer of the Pancreas Screening (CAPS) Consortium. Frequent detection of pancreatic lesions in asymptomatic high-risk individuals. *Gastroenterology* 2012; **142**: 796-804 [PMID: [22245846](#) DOI: [10.1053/j.gastro.2012.01.005](#)]
- 26 **Capurso G**, Signoretti M, Valente R, Arnelo U, Lohr M, Poley JW, Delle Fave G, Del Chiaro M. Methods and outcomes of screening for pancreatic adenocarcinoma in high-risk individuals. *World J Gastrointest Endosc* 2015; **7**: 833-842 [PMID: [26240684](#) DOI: [10.4253/wjge.v7.i9.833](#)]
- 27 **Harinck F**, Konings IC, Kluijdt I, Poley JW, van Hooft JE, van Dullemen HM, Nio CY, Krak NC, Hermans JJ, Aalfs CM, Wagner A, Sijmons RH, Biermann K, van Eijck CH, Gouma DJ, Dijkgraaf MG, Fockens P, Bruno MJ; Dutch research group on pancreatic cancer surveillance in high-risk individuals. A multicentre comparative prospective blinded analysis of EUS and MRI for screening of pancreatic cancer in high-risk individuals. *Gut* 2016; **65**: 1505-1513 [PMID: [25986944](#) DOI: [10.1136/gutjnl-2014-308008](#)]
- 28 **Topazian M**, Enders F, Kimmey M, Brand R, Chak A, Clain J, Cunningham J, Eloubeidi M, Gerdes H, Gress F, Jagannath S, Kantsevoy S, LeBlanc JK, Levy M, Lightdale C, Romagnuolo J, Saltzman JR, Savides T, Wiersma M, Woodward T, Petersen G, Canto M. Interobserver agreement for EUS findings in familial pancreatic-cancer kindreds. *Gastrointest Endosc* 2007; **66**: 62-67 [PMID: [17382940](#) DOI: [10.1016/j.gie.2006.09.018](#)]
- 29 **Shin EJ**, Topazian M, Goggins MG, Syngal S, Saltzman JR, Lee JH, Farrell JJ, Canto MI. Linear-array EUS improves detection of pancreatic lesions in high-risk individuals: a randomized tandem study. *Gastrointest Endosc* 2015; **82**: 812-818 [PMID: [25930097](#) DOI: [10.1016/j.gie.2015.02.028](#)]
- 30 **Canto MI**, Almario JA, Schulick RD, Yeo CJ, Klein A, Blackford A, Shin EJ, Sanyal A, Yenokyan G, Lennon AM, Kamel IR, Fishman EK, Wolfgang C, Weiss M, Hruban RH, Goggins M. Risk of Neoplastic Progression in Individuals at High Risk for Pancreatic Cancer Undergoing Long-term Surveillance. *Gastroenterology* 2018; **155**: 740-751 [PMID: [29803839](#) DOI: [10.1053/j.gastro.2018.05.035](#)]
- 31 **Vasen H**, Ibrahim I, Ponce CG, Slater EP, Matthäi E, Carrato A, Earl J, Robbers K, van Mil AM, Potjer T, Bonsing BA, de Vos Tot Nederveen Cappel WH, Bergman W, Wasser M, Morreau H, Klöppel G, Schicker C, Steinkamp M, Figiel J, Esposito I, Mocci E, Vazquez-Sequeiros E, Sanjuanbenito A, Muñoz-Beltrán M, Montans J, Langer P, Fendrich V, Bartsch DK. Benefit of Surveillance for Pancreatic Cancer in High-Risk Individuals: Outcome of Long-Term Prospective Follow-Up Studies From Three European Expert Centers. *J Clin Oncol* 2016; **34**: 2010-2019 [PMID: [27114589](#) DOI: [10.1200/JCO.2015.64.0730](#)]
- 32 **Al-Sukhni W**, Borgida A, Rothenmund H, Holter S, Semotiuk K, Grant R, Wilson S, Moore M, Narod S, Jhaveri K, Haider MA, Gallinger S. Screening for pancreatic cancer in a high-risk cohort: an eight-year experience. *J Gastrointest Surg* 2012; **16**: 771-783 [PMID: [22127781](#) DOI: [10.1007/s11605-011-1781-6](#)]
- 33 **Verna EC**, Hwang C, Stevens PD, Rotterdam H, Stavropoulos SN, Sy CD, Prince MA, Chung WK, Fine RL, Chabot JA, Frucht H. Pancreatic cancer screening in a prospective cohort of high-risk patients: a comprehensive strategy of imaging and genetics. *Clin Cancer Res* 2010; **16**: 5028-5037 [PMID: [20876795](#) DOI: [10.1158/1078-0432.CCR-09-3209](#)]
- 34 **Ludwig E**, Olson SH, Bayuga S, Simon J, Schattner MA, Gerdes H, Allen PJ, Jarnagin WR, Kurtz RC. Feasibility and yield of screening in relatives from familial pancreatic cancer families. *Am J Gastroenterol* 2011; **106**: 946-954 [PMID: [21468009](#) DOI: [10.1038/ajg.2011.65](#)]
- 35 **Imbe K**, Nagata N, Hisada Y, Takasaki Y, Sekine K, Mishima S, Kawazoe A, Tajima T, Shimbo T, Yanase M, Akiyama J, Fujimoto K, Uemura N. Validation of the American Gastroenterological Association guidelines on management of intraductal papillary mucinous neoplasms: more than 5 years of follow-up. *Eur Radiol* 2018; **28**: 170-178 [PMID: [28770404](#) DOI: [10.1007/s00330-017-4966-x](#)]

- 36 **Gangi A**, Malafa M, Klapman J. Endoscopic Ultrasound-Based Pancreatic Cancer Screening of High-Risk Individuals: A Prospective Observational Trial. *Pancreas* 2018; **47**: 586-591 [PMID: [29683970](#) DOI: [10.1097/MPA.0000000000001038](#)]
- 37 **Brentnall TA**, Bronner MP, Byrd DR, Haggitt RC, Kimmey MB. Early diagnosis and treatment of pancreatic dysplasia in patients with a family history of pancreatic cancer. *Ann Intern Med* 1999; **131**: 247-255 [PMID: [10454945](#) DOI: [10.7326/0003-4819-131-4-199908170-00003](#)]
- 38 **Rulyak SJ**, Kimmey MB, Veenstra DL, Brentnall TA. Cost-effectiveness of pancreatic cancer screening in familial pancreatic cancer kindreds. *Gastrointest Endosc* 2003; **57**: 23-29 [PMID: [12518126](#) DOI: [10.1067/mge.2003.28](#)]
- 39 **DaVe T**, Coronel E, Papafragkakis C, Thaiudom S, Lanke G, Chakinala RC, Nogueras González GM, Bhutani MS, Ross WA, Weston BR, Lee JH. Pancreatic cancer screening in high-risk individuals with germline genetic mutations. *Gastrointest Endosc* 2018; **87**: 1443-1450 [PMID: [29309780](#) DOI: [10.1016/j.gie.2017.12.019](#)]
- 40 **Schneider R**, Slater EP, Sina M, Habbe N, Fendrich V, Matthäi E, Langer P, Bartsch DK. German national case collection for familial pancreatic cancer (FaPaCa): ten years experience. *Fam Cancer* 2011; **10**: 323-330 [PMID: [21207249](#) DOI: [10.1007/s10689-010-9414-x](#)]
- 41 **Roch AM**, Schneider J, Carr RA, Lancaster WP, House MG, Zyromski NJ, Nakeeb A, Schmidt CM, Ceppa EP. Are BRCA1 and BRCA2 gene mutation patients underscreened for pancreatic adenocarcinoma? *J Surg Oncol* 2019; **119**: 777-783 [PMID: [30636051](#) DOI: [10.1002/jso.25376](#)]
- 42 **Zanini N**, Giordano M, Smerieri E, Cipolla d'Abruzzo G, Guidi M, Pazzagli G, De Luca F, Chiaruzzi G, Vitullo G, Piva P, Lombardi R, Jovine E, Gatti M, Landolfo G. Estimation of the prevalence of asymptomatic pancreatic cysts in the population of San Marino. *Pancreatol* 2015; **15**: 417-422 [PMID: [26028332](#) DOI: [10.1016/j.pan.2015.05.461](#)]
- 43 **Tanaka M**, Fernández-Del Castillo C, Kamisawa T, Jang JY, Levy P, Ohtsuka T, Salvia R, Shimizu Y, Tada M, Wolfgang CL. Revisions of international consensus Fukuoka guidelines for the management of IPMN of the pancreas. *Pancreatol* 2017; **17**: 738-753 [PMID: [28735806](#) DOI: [10.1016/j.pan.2017.07.007](#)]
- 44 **European Study Group on Cystic Tumours of the Pancreas**. European evidence-based guidelines on pancreatic cystic neoplasms. *Gut* 2018; **67**: 789-804 [PMID: [29574408](#) DOI: [10.1136/gutjnl-2018-316027](#)]
- 45 **Kamata K**, Kitano M, Kudo M, Sakamoto H, Kadosaka K, Miyata T, Imai H, Maekawa K, Chikugo T, Kumano M, Hyodo T, Murakami T, Chiba Y, Takeyama Y. Value of EUS in early detection of pancreatic ductal adenocarcinomas in patients with intraductal papillary mucinous neoplasms. *Endoscopy* 2014; **46**: 22-29 [PMID: [24218310](#) DOI: [10.1055/s-0033-1353603](#)]
- 46 **Felsenstein M**, Noë M, Masica DL, Hosoda W, Chianichiano P, Fischer CG, Lionheart G, Brosens LAA, Pea A, Yu J, Gemenetzi G, Groot VP, Makary MA, He J, Weiss MJ, Cameron JL, Wolfgang CL, Hruban RH, Roberts NJ, Karchin R, Goggins MG, Wood LD. IPMNs with co-occurring invasive cancers: neighbours but not always relatives. *Gut* 2018; **67**: 1652-1662 [PMID: [29500184](#) DOI: [10.1136/gutjnl-2017-315062](#)]
- 47 **Petrone MC**, Arcidiacono PG, Perri F, Carrara S, Boemo C, Testoni PA. Chronic pancreatitis-like changes detected by endoscopic ultrasound in subjects without signs of pancreatic disease: do these indicate age-related changes, effects of xenobiotics, or early chronic pancreatitis? *Pancreatol* 2010; **10**: 597-602 [PMID: [20980777](#) DOI: [10.1159/000314599](#)]
- 48 **Konings ICAW**, Cahen DL, Harinck F, Fockens P, van Hooft JE, Poley JW, Bruno MJ. Evolution of features of chronic pancreatitis during endoscopic ultrasound-based surveillance of individuals at high risk for pancreatic cancer. *Endosc Int Open* 2018; **6**: E541-E548 [PMID: [29713680](#) DOI: [10.1055/a-0574-2396](#)]
- 49 **Thiruvengadam SS**, Chuang J, Huang R, Girotra M, Park WG. Chronic pancreatitis changes in high-risk individuals for pancreatic ductal adenocarcinoma. *Gastrointest Endosc* 2019; **89**: 842-851 [PMID: [30145314](#) DOI: [10.1016/j.gie.2018.08.029](#)]
- 50 **Catalano MF**, Sahai A, Levy M, Romagnuolo J, Wiersema M, Brugge W, Freeman M, Yamao K, Canto M, Hernandez LV. EUS-based criteria for the diagnosis of chronic pancreatitis: the Rosemont classification. *Gastrointest Endosc* 2009; **69**: 1251-1261 [PMID: [19243769](#) DOI: [10.1016/j.gie.2008.07.043](#)]
- 51 **Brune K**, Abe T, Canto M, O'Malley L, Klein AP, Maitra A, Volkan Adsay N, Fishman EK, Cameron JL, Yeo CJ, Kern SE, Goggins M, Hruban RH. Multifocal neoplastic precursor lesions associated with lobular atrophy of the pancreas in patients having a strong family history of pancreatic cancer. *Am J Surg Pathol* 2006; **30**: 1067-1076 [PMID: [16931950](#) DOI: [pas.0000213265.84725.0b](#)]
- 52 **Hruban RH**, Canto MI, Goggins M, Schulick R, Klein AP. Update on familial pancreatic cancer. *Adv Surg* 2010; **44**: 293-311 [PMID: [20919528](#) DOI: [10.1016/j.yasu.2010.05.011](#)]
- 53 **Aimoto T**, Uchida E, Nakamura Y, Matsushita A, Katsumo A, Chou K, Kawamoto M, Naito Z, Tajiri T. Multicentric pancreatic intraepithelial neoplasias (PanINs) presenting with the clinical features of chronic pancreatitis. *J Hepatobiliary Pancreat Surg* 2008; **15**: 549-553 [PMID: [18836812](#) DOI: [10.1007/s00534-007-1269-7](#)]
- 54 **Maire F**, Couvelard A, Palazzo L, Aubert A, Vullierme MP, Rebours V, Hammel P, Sauvanet A, Levy P, Ruszniewski P. Pancreatic intraepithelial neoplasia in patients with intraductal papillary mucinous neoplasms: the interest of endoscopic ultrasonography. *Pancreas* 2013; **42**: 1262-1266 [PMID: [24152960](#) DOI: [10.1097/01.mpa.0000437639.38383.41](#)]
- 55 **Lesmana CRA**, Gani RA, Lesmana LA. Non-alcoholic fatty pancreas disease as a risk factor for pancreatic cancer based on endoscopic ultrasound examination among pancreatic cancer patients: A single-center experience. *JGH Open* 2017; **2**: 4-7 [PMID: [30483555](#) DOI: [10.1002/jgh3.12032](#)]
- 56 **Fusaroli P**, Napoleon B, Gincul R, Lefort C, Palazzo L, Palazzo M, Kitano M, Minaga K, Caletti G, Lisotti A. The clinical impact of ultrasound contrast agents in EUS: a systematic review according to the levels of evidence. *Gastrointest Endosc* 2016; **84**: 587-596 [PMID: [27311654](#) DOI: [10.1016/j.gie.2016.06.006](#)]
- 57 **Li XZ**, Song J, Sun ZX, Yang YY, Wang H. Diagnostic performance of contrast-enhanced ultrasound for pancreatic neoplasms: A systematic review and meta-analysis. *Dig Liver Dis* 2018; **50**: 132-138 [PMID: [29162410](#) DOI: [10.1016/j.dld.2017.10.012](#)]
- 58 **Kawada N**, Tanaka S. Elastography for the pancreas: Current status and future perspective. *World J Gastroenterol* 2016; **22**: 3712-3724 [PMID: [27076756](#) DOI: [10.3748/wjg.v22.i14.3712](#)]
- 59 **Iglesias-Garcia J**, Larino-Noia J, Abdulkader I, Forteza J, Dominguez-Munoz JE. EUS elastography for the characterization of solid pancreatic masses. *Gastrointest Endosc* 2009; **70**: 1101-1108 [PMID: [19243769](#) DOI: [10.1016/j.gie.2008.07.043](#)]

- 19647248 DOI: [10.1016/j.gie.2009.05.011](https://doi.org/10.1016/j.gie.2009.05.011)]
- 60 **Lami G**, Biagini MR, Galli A. Endoscopic ultrasonography for surveillance of individuals at high risk for pancreatic cancer. *World J Gastrointest Endosc* 2014; **6**: 272-285 [PMID: [25031786](https://pubmed.ncbi.nlm.nih.gov/25031786/) DOI: [10.4253/wjge.v6.i7.272](https://doi.org/10.4253/wjge.v6.i7.272)]
- 61 **Bhutani MS**, Koduru P, Joshi V, Saxena P, Suzuki R, Irisawa A, Yamao K. The role of endoscopic ultrasound in pancreatic cancer screening. *Endosc Ultrasound* 2016; **5**: 8-16 [PMID: [26879161](https://pubmed.ncbi.nlm.nih.gov/26879161/) DOI: [10.4103/2303-9027.175876](https://doi.org/10.4103/2303-9027.175876)]
- 62 **Kanda M**, Sadakari Y, Borges M, Topazian M, Farrell J, Syngal S, Lee J, Kamel I, Lennon AM, Knight S, Fujiwara S, Hruban RH, Canto MI, Goggins M. Mutant TP53 in duodenal samples of pancreatic juice from patients with pancreatic cancer or high-grade dysplasia. *Clin Gastroenterol Hepatol* 2013; **11**: 719-30 [PMID: [23200980](https://pubmed.ncbi.nlm.nih.gov/23200980/) DOI: [10.1016/j.cgh.2012.11.016](https://doi.org/10.1016/j.cgh.2012.11.016)]
- 63 **Bournet B**, Gayral M, Torrisani J, Selves J, Cordelier P, Buscail L. Role of endoscopic ultrasound in the molecular diagnosis of pancreatic cancer. *World J Gastroenterol* 2014; **20**: 10758-10768 [PMID: [25152579](https://pubmed.ncbi.nlm.nih.gov/25152579/) DOI: [10.3748/wjg.v20.i31.10758](https://doi.org/10.3748/wjg.v20.i31.10758)]
- 64 **Bhutani MS**, Gupta V, Guha S, Gheonea DI, Saftoiu A. Pancreatic cyst fluid analysis--a review. *J Gastrointest Liver Dis* 2011; **20**: 175-180 [PMID: [21725515](https://pubmed.ncbi.nlm.nih.gov/21725515/)]
- 65 **Wong T**, Howes N, Threadgold J, Smart HL, Lombard MG, Gilmore I, Sutton R, Greenhalf W, Ellis I, Neoptolemos JP. Molecular diagnosis of early pancreatic ductal adenocarcinoma in high-risk patients. *Pancreatology* 2001; **1**: 486-509 [PMID: [12120229](https://pubmed.ncbi.nlm.nih.gov/12120229/) DOI: [10.1159/000055852](https://doi.org/10.1159/000055852)]
- 66 **Kisiel JB**, Raimondo M, Taylor WR, Yab TC, Mahoney DW, Sun Z, Middha S, Baheti S, Zou H, Smyrk TC, Boardman LA, Petersen GM, Ahlquist DA. New DNA Methylation Markers for Pancreatic Cancer: Discovery, Tissue Validation, and Pilot Testing in Pancreatic Juice. *Clin Cancer Res* 2015; **21**: 4473-4481 [PMID: [26023084](https://pubmed.ncbi.nlm.nih.gov/26023084/) DOI: [10.1158/1078-0432.CCR-14-2469](https://doi.org/10.1158/1078-0432.CCR-14-2469)]
- 67 **Takano S**, Fukasawa M, Kadokura M, Shindo H, Takahashi E, Hirose S, Maekawa S, Mochizuki K, Kawaida H, Itakura J, Katoh R, Fujii H, Sato T, Enomoto N. Next-Generation Sequencing Revealed TP53 Mutations to Be Malignant Marker for Intraductal Papillary Mucinous Neoplasms That Could Be Detected Using Pancreatic Juice. *Pancreas* 2017; **46**: 1281-1287 [PMID: [28930868](https://pubmed.ncbi.nlm.nih.gov/28930868/) DOI: [10.1097/MPA.0000000000000931](https://doi.org/10.1097/MPA.0000000000000931)]
- 68 **Yan L**, McFaul C, Howes N, Leslie J, Lancaster G, Wong T, Threadgold J, Evans J, Gilmore I, Smart H, Lombard M, Neoptolemos J, Greenhalf W. Molecular analysis to detect pancreatic ductal adenocarcinoma in high-risk groups. *Gastroenterology* 2005; **128**: 2124-2130 [PMID: [15940643](https://pubmed.ncbi.nlm.nih.gov/15940643/) DOI: [10.1053/j.gastro.2005.03.006](https://doi.org/10.1053/j.gastro.2005.03.006)]
- 69 **Matsumoto K**, Takeda Y, Harada K, Onoyama T, Kawata S, Horie Y, Sakamoto T, Ueki M, Miura N, Murawaki Y. Clinical Impact of the KL-6 Concentration of Pancreatic Juice for Diagnosing Pancreatic Masses. *Biomed Res Int* 2015; **2015**: 528304 [PMID: [26451373](https://pubmed.ncbi.nlm.nih.gov/26451373/) DOI: [10.1155/2015/528304](https://doi.org/10.1155/2015/528304)]
- 70 **Gonzalo-Marin J**, Vila JJ, Perez-Miranda M. Role of endoscopic ultrasound in the diagnosis of pancreatic cancer. *World J Gastrointest Oncol* 2014; **6**: 360-368 [PMID: [25232461](https://pubmed.ncbi.nlm.nih.gov/25232461/) DOI: [10.4251/wjgo.v6.i9.360](https://doi.org/10.4251/wjgo.v6.i9.360)]
- 71 **Eloubeidi MA**, Chen VK, Eltoum IA, Jhala D, Chhieng DC, Jhala N, Vickers SM, Wilcox CM. Endoscopic ultrasound-guided fine needle aspiration biopsy of patients with suspected pancreatic cancer: diagnostic accuracy and acute and 30-day complications. *Am J Gastroenterol* 2003; **98**: 2663-2668 [PMID: [14687813](https://pubmed.ncbi.nlm.nih.gov/14687813/) DOI: [10.1111/j.1572-0241.2003.08666.x](https://doi.org/10.1111/j.1572-0241.2003.08666.x)]
- 72 **Tian L**, Tang AL, Zhang L, Liu XW, Li JB, Wang F, Shen SR, Wang XY. Evaluation of 22G fine-needle aspiration (FNA) versus fine-needle biopsy (FNB) for endoscopic ultrasound-guided sampling of pancreatic lesions: a prospective comparison study. *Surg Endosc* 2018; **32**: 3533-3539 [PMID: [29404729](https://pubmed.ncbi.nlm.nih.gov/29404729/) DOI: [10.1007/s00464-018-6075-6](https://doi.org/10.1007/s00464-018-6075-6)]
- 73 **Vullierme MP**, Menassa L, Couvelard A, Rebours V, Maire F, Ibrahim T, Cros J, Ruszniewski P, Sauvanet A, Levy P, Soyer P, Vilgrain V. Non-branched microcysts of the pancreas on MR imaging of patients with pancreatic tumors who had pancreatectomy may predict the presence of pancreatic intraepithelial neoplasia (PanIN): a preliminary study. *Eur Radiol* 2019 [PMID: [30972547](https://pubmed.ncbi.nlm.nih.gov/30972547/) DOI: [10.1007/s00330-019-06154-3](https://doi.org/10.1007/s00330-019-06154-3)]
- 74 **LeBlanc JK**, Chen JH, Al-Haddad M, Luz L, McHenry L, Sherman S, Juan M, Dewitt J. Can endoscopic ultrasound predict pancreatic intraepithelial neoplasia lesions in chronic pancreatitis?: a retrospective study of pathologic correlation. *Pancreas* 2014; **43**: 849-854 [PMID: [24826885](https://pubmed.ncbi.nlm.nih.gov/24826885/) DOI: [10.1097/MPA.0000000000000142](https://doi.org/10.1097/MPA.0000000000000142)]
- 75 **Munigala S**, Gelrud A, Agarwal B. Risk of pancreatic cancer in patients with pancreatic cyst. *Gastrointest Endosc* 2016; **84**: 81-86 [PMID: [26524643](https://pubmed.ncbi.nlm.nih.gov/26524643/) DOI: [10.1016/j.gie.2015.10.030](https://doi.org/10.1016/j.gie.2015.10.030)]
- 76 **Cazacu IM**, Luzuriaga Chavez AA, Saftoiu A, Bhutani MS. Psychological impact of pancreatic cancer screening by EUS or magnetic resonance imaging in high-risk individuals: A systematic review. *Endosc Ultrasound* 2019; **8**: 17-24 [PMID: [30246710](https://pubmed.ncbi.nlm.nih.gov/30246710/) DOI: [10.4103/eus.eus.25_18](https://doi.org/10.4103/eus.eus.25_18)]
- 77 **Latchford A**, Greenhalf W, Vitone LJ, Neoptolemos JP, Lancaster GA, Phillips RK. Peutz-Jeghers syndrome and screening for pancreatic cancer. *Br J Surg* 2006; **93**: 1446-1455 [PMID: [17115408](https://pubmed.ncbi.nlm.nih.gov/17115408/) DOI: [10.1002/bjs.5609](https://doi.org/10.1002/bjs.5609)]
- 78 **Kimmey MB**, Bronner MP, Byrd DR, Brentnall TA. Screening and surveillance for hereditary pancreatic cancer. *Gastrointest Endosc* 2002; **56**: S82-S86 [PMID: [12297755](https://pubmed.ncbi.nlm.nih.gov/12297755/) DOI: [10.1016/s0016-5107\(02\)70092-8](https://doi.org/10.1016/s0016-5107(02)70092-8)]



Published By Baishideng Publishing Group Inc
7041 Koll Center Parkway, Suite 160, Pleasanton, CA 94566, USA
Telephone: +1-925-2238242
Fax: +1-925-2238243
E-mail: bpgoffice@wjgnet.com
Help Desk: <http://www.f6publishing.com/helpdesk>
<http://www.wjgnet.com>

