

World Journal of *Transplantation*

World J Transplant 2019 October 28; 9(6): 103-144



**REVIEW**

- 103** Therapeutic apheresis in kidney transplantation: An updated review
Salvadori M, Tsalouchos A

ORIGINAL ARTICLE**Retrospective Study**

- 123** Histopathological characteristics and causes of kidney graft failure in the current era of immunosuppression
Parajuli S, Aziz F, Garg N, Panzer SE, Joachim E, Muth B, Mohamed M, Blazel J, Zhong W, Astor BC, Mandelbrot DA, Djamali A
- 134** Efficacy and safety of non-vitamin K antagonist oral anticoagulants post-kidney transplantation
Bukhari MA, Al-Theaby A, Tawhari M, Al-Shaggag A, Pyrke R, Gangji A, Treleaven D, Ribic C

ABOUT COVER

Editorial Board Member of *World Journal of Transplantation*, Francisco Salcido-Ochoa, MD, MRCP, MSc, PhD, Doctor, Francisco Kidney and Medical Centre, Singapore 329563, Singapore

AIMS AND SCOPE

The primary aim of *World Journal of Transplantation* (*WJT*, *World J Transplant*) is to provide scholars and readers from various fields of transplantation with a platform to publish high-quality basic and clinical research articles and communicate their research findings online.

WJT mainly publishes articles reporting research results obtained in the field of transplantation and covering a wide range of topics including bone marrow transplantation, bone transplantation, bone-patellar tendon-bone grafting, brain tissue transplantation, corneal transplantation, descemet stripping endothelial keratoplasty, fetal tissue transplantation, heart transplantation, kidney transplantation, liver transplantation, lung transplantation, pancreas transplantation, skin transplantation, transplantation immunology, and vascularized composite allotransplantation.

INDEXING/ABSTRACTING

The *WJT* is now abstracted and indexed in PubMed, PubMed Central, China National Knowledge Infrastructure (CNKI), and Superstar Journals Database.

RESPONSIBLE EDITORS FOR THIS ISSUE

Responsible Electronic Editor: *Yan-Xia Xing*

Proofing Production Department Director: *Yun-Xiaojuan Wu*

NAME OF JOURNAL

World Journal of Transplantation

ISSN

ISSN 2220-3230 (online)

LAUNCH DATE

December 24, 2011

FREQUENCY

Irregular

EDITORS-IN-CHIEF

Sami Akbulut, Vassilios Papalois, Maurizio Salvadori

EDITORIAL BOARD MEMBERS

<https://www.wjgnet.com/2220-3230/editorialboard.htm>

EDITORIAL OFFICE

Jia-Ping Yan, Director

PUBLICATION DATE

October 28, 2019

COPYRIGHT

© 2019 Baishideng Publishing Group Inc

INSTRUCTIONS TO AUTHORS

<https://www.wjgnet.com/bpg/gerinfo/204>

GUIDELINES FOR ETHICS DOCUMENTS

<https://www.wjgnet.com/bpg/GerInfo/287>

GUIDELINES FOR NON-NATIVE SPEAKERS OF ENGLISH

<https://www.wjgnet.com/bpg/gerinfo/240>

PUBLICATION MISCONDUCT

<https://www.wjgnet.com/bpg/gerinfo/208>

ARTICLE PROCESSING CHARGE

<https://www.wjgnet.com/bpg/gerinfo/242>

STEPS FOR SUBMITTING MANUSCRIPTS

<https://www.wjgnet.com/bpg/GerInfo/239>

ONLINE SUBMISSION

<https://www.f6publishing.com>



Retrospective Study

Histopathological characteristics and causes of kidney graft failure in the current era of immunosuppression

Sandesh Parajuli, Fahad Aziz, Neetika Garg, Sarah E Panzer, Emily Joachim, Brenda Muth, Maha Mohamed, Justin Blazel, Weixiong Zhong, Brad C Astor, Didier A Mandelbrot, Arjang Djamali

ORCID number: Sandesh Parajuli (0000-0003-1667-7465); Fahad Aziz (0000-0001-8230-3889); Neetika Garg (0000-0002-7392-4285); Sarah E Panzer (0000-0002-2565-3134); Emily Joachim (0000-0002-6354-9952); Brenda Muth (0000-0002-0175-6825); Maha Mohamed (0000-0003-0742-3535); Justin Blazel (0000-0002-9020-460X); Weixiong Zhong (0000-0002-4937-1764); Brad C Astor (0000-0002-0876-0069); Didier A Mandelbrot (0000-0003-3326-8583); Arjang Djamali (0000-0001-7675-6128).

Author contributions: Parajuli S and Djamali S had an original idea, designed the study, analyzed the data, prepared the manuscript; Aziz F, Garg N, Panzer SE, Joachim E, Muth B, Mohamed M, Blazel J, Zhong W, Astor BC, and Mandelbrot DA analyzed the data and edited the manuscript.

Institutional review board statement: This study was approved by the Health Sciences Institutional Review Board at the University of Wisconsin.

Informed consent statement: Waiver of informed consent obtained due to: (1) The study involves no more than minimal risk to the subjects; (2) The waiver will not adversely affect the rights and welfare of the subjects; (3) The study could not practically be carried out without the waiver.

Conflict-of-interest statement: The authors have no financial disclosures.

Sandesh Parajuli, Fahad Aziz, Neetika Garg, Sarah E Panzer, Emily Joachim, Brenda Muth, Maha Mohamed, Justin Blazel, Brad C Astor, Didier A Mandelbrot, Arjang Djamali, Division of Nephrology, Department of Medicine, University of Wisconsin, Madison, WI 53705, United States

Weixiong Zhong, Department of Pathology, University of Wisconsin, Madison, WI 53705, United States

Brad C Astor, Department of Population Health Sciences, University of Wisconsin, Madison, WI 53705, United States

Arjang Djamali, Division of Transplantation, Department of Surgery, University of Wisconsin, Madison, WI 53705, United States

Corresponding author: Sandesh Parajuli, MBBS, MD, Assistant Professor, Division of Nephrology, Department of Medicine, University of Wisconsin, 4175 UW Medical Foundation Centennial Building, 1685 Highland Avenue, Madison, WI 53705, United States.

sparajuli@medicine.wisc.edu

Telephone: +1-608-2650152

Abstract

BACKGROUND

The histopathological findings on the failing kidney allograft in the modern era is not well studied. In this study, we present our experience working with kidney transplant recipients with graft failure within one year of the biopsy.

AIM

To report the histopathological characteristics of failed kidney allografts in the current era of immunosuppression based on the time after transplant, cause of the end-stage renal disease and induction immunosuppressive medications.

METHODS

In a single-center observational study, we characterized the histopathological findings of allograft biopsies in kidney transplant recipients with graft failure within one year after the biopsy.

RESULTS

We identified 329 patients with graft failure that met the selection criteria between January 1, 2006 and December 31, 2016. The three most common biopsy findings were interstitial fibrosis and tubular atrophy (IFTA, 53%), acute rejection

Open-Access: This is an open-access article that was selected by an in-house editor and fully peer-reviewed by external reviewers. It is distributed in accordance with the Creative Commons Attribution Non Commercial (CC BY-NC 4.0) license, which permits others to distribute, remix, adapt, build upon this work non-commercially, and license their derivative works on different terms, provided the original work is properly cited and the use is non-commercial. See: <http://creativecommons.org/licenses/by-nc/4.0/>

Manuscript source: Invited manuscript

Received: June 6, 2019

Peer-review started: June 9, 2019

First decision: August 2, 2019

Revised: September 17, 2019

Accepted: October 2, 2019

Article in press: October 2, 2019

Published online: October 28, 2019

P-Reviewer: Gonzalez F

S-Editor: Yan JP

L-Editor: A

E-Editor: Xing YX



(AR, 43%) and transplant glomerulopathy (TG, 33%). Similarly, the three most common causes of graft failure based on the primary diagnosis were AR (40%), TG (17%), and IFTA (13%). Most grafts failed within two years of post-transplant (36%). Subsequently, approximately 10%-15% of grafts failed every two years: > 2-4 years (16%), > 4-6 years (13%), > 6-8 years (11%), > 8-10 years (9%) and > 10 years (16%). AR was the most common cause of graft failure in the first six years (48%), whereas TG was the most prevalent cause of graft failure after 6 years (32%) of transplant.

CONCLUSION

In the current era of immunosuppression, AR is still the most common cause of early graft failure, while TG is the most prevalent cause of late graft failure.

Key words: Kidney biopsy; Acute rejection; Graft failure; Transplant glomerulopathy; Interstitial fibrosis and tubular atrophy

©The Author(s) 2019. Published by Baishideng Publishing Group Inc. All rights reserved.

Core tip: There have been significant improvements in early graft survival. However, long-term graft survival has only had modest improvement. Causes of “true” late kidney allograft failure remain unclear. In this study, we explored the causes of graft failure based on the various factors, which may allow providers to determine interventions to prevent poor outcomes. We found, acute rejection, mainly antibody-mediated rejection, was the most common cause of early graft failure. And transplant glomerulopathy was a common cause of late graft failure, which occurred mainly after 6-7 years post-transplant even surpassed acute rejection.

Citation: Parajuli S, Aziz F, Garg N, Panzer SE, Joachim E, Muth B, Mohamed M, Blazel J, Zhong W, Astor BC, Mandelbrot DA, Djamali A. Histopathological characteristics and causes of kidney graft failure in the current era of immunosuppression. *World J Transplant* 2019; 9(6): 123-133

URL: <https://www.wjnet.com/2220-3230/full/v9/i6/123.htm>

DOI: <https://dx.doi.org/10.5500/wjt.v9.i6.123>

INTRODUCTION

Kidney transplantation is the best form of treatment for patients with end-stage renal disease (ESRD) of any cause. Kidney transplant recipients (KTRs) experience survival benefits in all age groups have a better health-related quality of life and transplant is cost-effective compared to dialysis^[1-3]. There have been significant improvements in early graft survival due to advances in immunosuppression and the overall medical care of transplant recipients. However, long-term graft survival has only had a modest improvement^[4-6]. Allograft failure among transplanted kidney recipients is now the fourth leading cause of ESRD in the United States^[7]. Studies from nearly a decade ago suggest that antibody-mediated rejection (ABMR) and disease recurrence are the most common causes of graft failure^[7,8]. However, the causes of “true” late kidney allograft failure remain unclear^[9]. In this study, we explored the causes of graft failure based on time after transplant, causes of ESRD and induction immunosuppressive medication in the current era, which may allow providers to determine interventions to prevent poor outcomes.

MATERIALS AND METHODS

Study population and design

We study KTRs who were transplanted at the University of Wisconsin, and who had graft failure between January 1, 2006 and December 31, 2016 and transplanted between January 1, 1994 to December 31, 2016. We chose 2006 as a current era because at that time most of our clinical practice including histopathological reporting were protocolized. Patients were included if they underwent a kidney biopsy within one

year prior to the graft failure. If they had multiple biopsies within one year prior to the graft failure, the biopsy closest to the graft failure was included in the analysis. Patients with primary graft dysfunction (defined as not having functional allograft and needing dialysis for at least 3 mo post-transplant or graft nephrectomy) or death with a functional graft were excluded from the study (Figure 1). This study was approved by the Health Sciences Institutional Review Board at the University of Wisconsin.

Data collection

We analyzed data on age, gender, race, re-transplant status, the cause of ESRD, type of transplant, induction immunosuppression, organ failure method before graft failure (re-transplant *vs* initiation of dialysis). In cases where a patient had multiple biopsy diagnoses, all diagnoses were also reported separately, although the primary diagnosis (first diagnosis) was used for the cause of graft failure. We divided the causes of graft failure based on the post-transplant interval divided into 2 years interval, based on the causes of ESRD and also the types of induction immunosuppressive medication.

Immunosuppression

Patients undergoing kidney transplant received induction immunosuppression with either a depleting (anti-thymocyte globulin, alemtuzumab or OKT3) or non-depleting (basiliximab or daclizumab) agent-based on immunological risk factors. Patients were typically maintained on a triple immunosuppressive regimen with a calcineurin inhibitor (CNI, usually tacrolimus), antiproliferative agent (usually mycophenolate mofetil or mycophenolic acid), and steroids. Some patients had early steroid withdrawal based on clinical judgment and the patient's request. Doses and drug levels were individually adjusted at physician discretion based on the patient's clinical condition, including infection, malignancy, and rejection. Patients were maintained on the same immunosuppressive medication until graft failure. However, if there was a feature of CNI toxicity on biopsy, then CNI trough goal was lowered or even discontinued based on physician discretion. Once the patient return on dialysis, immunosuppressive medication was tapered down and maintained only on low dose steroid. Switching to mTOR inhibitor among failing graft was not common practice.

Kidney allograft biopsy

The majority of the biopsies were performed for-cause, mainly for the unexplained rise in serum creatinine, concern for rejections, significant proteinuria, or the development of *de novo* donor-specific antibodies (DSA). Protocol biopsies were performed at months 3 and 12 for all patients with pre-transplant DSA, and 6-12 wk after treatment of rejection.

Rejection treatment

ABMR treatment protocols at our institution are based on both the severity of rejection and the time after transplant at which ABMR is diagnosed as described previously^[10]. Briefly, for early rejection (within 3 mo post-transplant), treatment includes dexamethasone 100 mg bolus and taper, plasmapheresis (PP) 4-6 sessions, and intravenous immunoglobulin (IVIG) 100 mg/kg after each PP. Late rejection (> 3 mo post-transplant) is treated with dexamethasone 100 mg bolus and taper and IVIG 200 mg/kg every 2 wk \times 3. Rituximab 375 mg/m² as a single dose is added based on clinical and laboratory characteristics. The treatment regimen for both smoldering and clinical rejection is the same at our institution.

Treatment of acute cellular rejection (ACR) is also based on Banff criteria and severity. Borderline and Banff stage I rejection is treated with steroid pulse. Banff II and III ACR are treated with steroid pulse and Thymoglobulin 6-10.5 mg/kg in 4 to 7 divided doses. In mixed rejection, steroid pulse, IVIG, Thymoglobulin 10.5 mg/kg \pm rituximab are used.

Statistical analysis

Continuous data were compared using Student's *t*-test or the Wilcoxon rank-sum test, as appropriate, while categorical data were analyzed using Fisher's exact test or chi-square test. *P* values < 0.05 were considered statistically significant. All analyses were performed using the MedCalc Statistical Software version 16.4.3 (MedCalc Software bvba, Ostend, Belgium; <https://www.medcalc.org>; 2016).

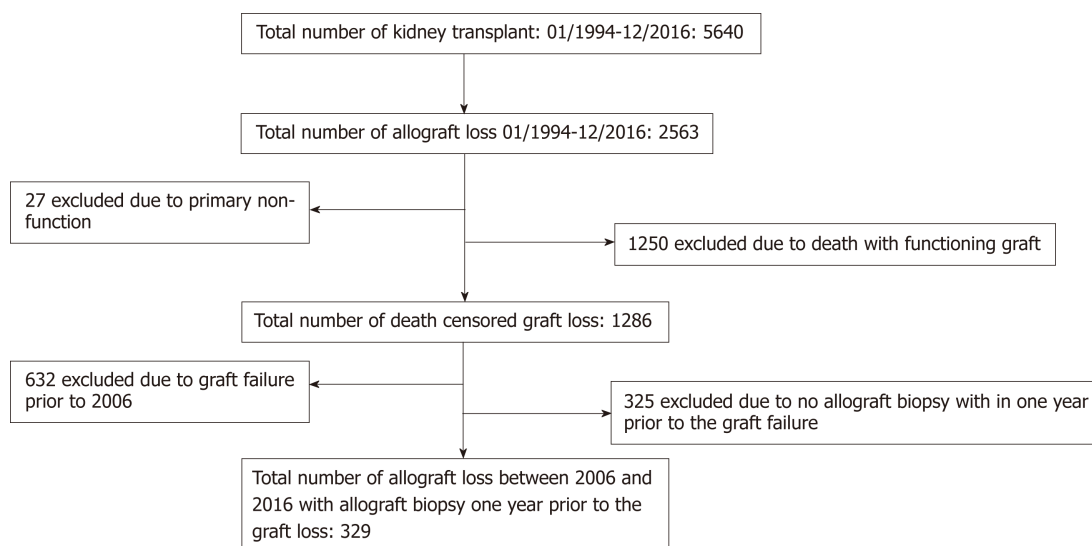


Figure 1 Study design: Death censored graft failure from 2006-2016 with allograft biopsy within one year prior to the graft failure.

RESULTS

Study population

A total of 654 patients had death-censored graft failure during the study period. Of these, 329 (50%) fulfilled our selection criteria and were included in the study.

Baseline characteristics

Out of the 329 KTRs included in the study, 127 (39%) were female and the majority were Caucasian (77%). Mean age at the time of transplant was 42.2 ± 13.7 years. Glomerulonephritis was the most common cause of ESRD and 33% were living KTRs. More than 50% had DSA around the time of graft failure. The mean interval from biopsy to graft failure was 106.5 ± 104.6 d (Table 1).

Biopsy findings

Interstitial fibrosis and tubular atrophy (IFTA) was the most common biopsy finding in 53% of all failed grafts, followed by acute rejection (AR) in 43% and transplant glomerulopathy (TG) in 33%. Less common findings were acute tubular necrosis, arteriosclerosis, recurrence of disease, donor vascular disease and BK nephropathy (BKVN) (Figure 2).

Common causes of graft failure based on the primary diagnosis

AR was the most common cause of graft failure and accounted for 40% (32% ABMR or mixed rejection and 8% ACR) of all graft failure. TG (17%), IFTA (13%), disease recurrence (7%) including the recurrence of diabetic nephropathy and glomerular disease, and BKVN (5%) were the following common causes of graft failure. Other less common causes of graft failure were donor vascular disease, prolonged acute tubular necrosis, CNI toxicity, and renal infarction (18% total graft failures). Among patients with AR as a cause of graft failure, 74 % had human leukocyte antigen (HLA) DSA at time of a biopsy, while 17% did not have HLA DSA and in 9% HLA DSA was not tested (Figure 3).

Common causes of graft failure based on the cause of ESRD

We further analyzed the cause of graft failure based on the three most common causes of ESRD: Glomerulonephritis, diabetes, and hypertension. AR was significantly higher in the glomerulonephritis and hypertension group compared to diabetes, and acute tubular necrosis was higher in the hypertension group (Table 2).

Common causes of graft failure based on the induction immunosuppressive medication

Patients were divided into two groups based on the induction immunosuppressive medication they received at time of transplant: Depleting agents (Anti-thymocyte globulin or alemtuzumab or OKT3) and non-depleting agents (basiliximab or daclizumab), which also included patients who received no or unknown induction. In the non-depleting group, TG was a significantly higher cause of graft failure

Table 1 Baseline characteristics, *n* (%)

Baseline characteristics	
Total number of graft failure	329 (100)
Female gender	127 (39)
Mean age at the time of transplant (yr)	42.2 ± 13.7
Caucasian	253 (77)
Causes of end stage renal disease:	
Glomerulonephritis	99 (30)
Diabetes	71 (22)
Hypertension	35 (11)
Polycystic kidney disease	34 (10)
Congenital disorder	9 (3)
Other	81 (25)
Mean number of transplants (Range 1-3)	1.29 ± 0.59
Living donor transplant	108 (33)
Induction Immunosuppression:	
Basiliximab	179 (54)
Thymoglobulin	52 (16)
Alemtuzumab	66 (20)
Other	32 (10)
Organ failure method:	
Resumption of dialysis	319 (97)
Re-transplantation (preemptive re-transplant)	10 (3)
DSA within a year prior to the graft failure:	
Present	184 (56)
Absent	89 (27)
Not tested	56 (17)
Mean graft survival (yr)	4.9 ± 4.4
Mean interval between biopsy and graft failure (d)	106.5 ± 104.6

DSA: Donor-specific antibodies.

compared to depleting agent group 48% vs 24% (Table 3).

Causes of graft failure according to time after transplant

AR, was the most common cause of graft failure in the early post-transplant period (within six years post-transplant) and accounted for 31% of total graft failures. (23% ABMR or mixed rejection and 8% ACR). There was a significant trend for graft failure due to rejection in the early post-transplant period ($P = 0.001$), while in the late post-transplant period, TG was the most common cause of graft failure ($P \leq 0.001$). The incidence of graft failure due to AR was higher up to 6 years post-transplant, with TG being the most common cause after 6 years (Figure 3). A total of 101 (48% of 212) graft failures within six years post-transplant were due to AR compared to 31 (26% of 117) after six years post-transplant ($P = 0.01$). TG was the primary cause of graft failure in 9% of patients within the first six years compared to 32% after six years ($P < 0.001$) (Figure 4). Rejection, TG, IFTA, and disease recurrence were evenly distributed as primary causes of graft failure after 10 years, each at approximately 20%-25%. Unsurprisingly, BKNV was more common in first 4 years post-transplant.

The most common time for graft failure was within two years post-transplant ($n = 117$, 36%). Subsequently, approximately 10%-15% of grafts failed every two years: > 2-4 years ($n = 51$, 16%), > 4-6 years ($n = 44$, 13%), > 6-8 years ($n = 35$, 11%), > 8-10 years ($n = 31$, 9%) and > 10 years ($n = 51$, 16%). Among 56 (17%) patients with the primary diagnosis of TG as a cause of graft failure, 25 (45%) had at least one episode of ABMR in the past. Similarly, around the time of last biopsy (± 3 mo), HLA-DSA was present in 30 (54%), DSA was not detected in 13 (23%) of the patients, and in 23% DSA was not checked around the time of biopsy (Figures 4 and 5).

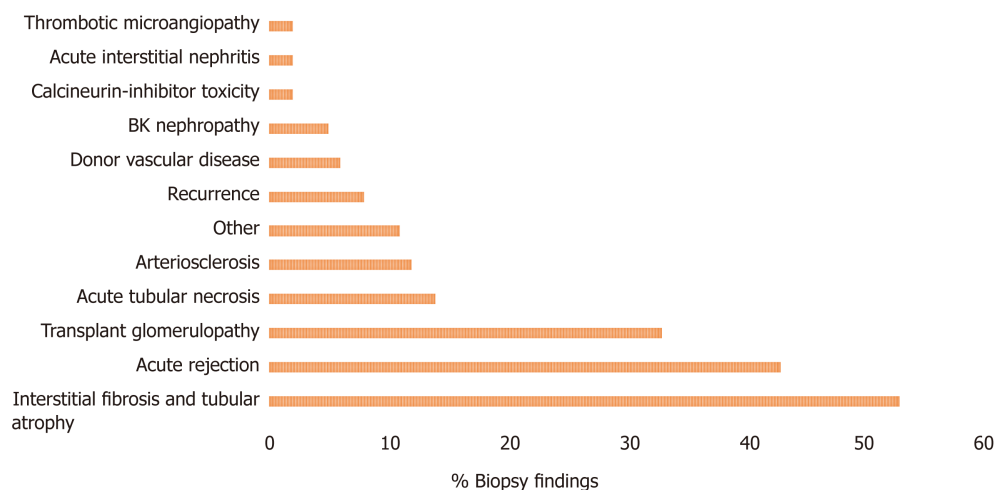


Figure 2 All histological findings on the biopsy. Interstitial fibrosis and tubular atrophy, acute rejection, and transplant glomerulopathy were the common histological findings in the failing graft.

DISCUSSION

In this study of the cause of graft failure among KTRs, we found that the primary cause of graft failure varies with time after transplantation. AR, mainly ABMR, was the most common cause of graft failure and accounted for 40% of graft failures, which peaked at 6 years post-transplant. After an AR, TG, one of the most specific histological findings of chronic ABMR^[11], accounted for 17% of graft failure, which occurred mainly after 6-7 years post-transplant and was the most common cause of graft failure and even surpassed AR as a cause of graft failure. With careful adjustment of CNI dosing and with close monitoring of trough level, CNI toxicity was not a prevalent cause of graft failure in our cohort, which was considered one of the common cause of graft failure in the past.

There has been a dramatic improvement in the rate of AR. The half-life of a standard criteria deceased donor kidney in the United States has increased by almost 50%, from 10.6 years in 1989 to 15.5 years in 2005, and a similar pattern was seen with living donor transplantation^[5]. This change was paralleled by a dramatic decline in graft failure within the first-year post-transplant period. Unfortunately, death-censored graft failure beyond the first year has remained unchanged since 1989^[12]. During this time, our understanding of rejection and management have evolved, and graft failure due to hyperacute rejection is very rare. With newer protocols, ACR rates have decreased to less than 10% in the first year^[5]. In the current era, our focus is on the prevention and treatment of ABMR. Certain newer therapeutics are considered for ABMR treatment based on their mechanism of action, such as anti-CD20 antibodies (*e.g.*, ofatumumab and ocrelizumab), anti-CD22 antibody (epratuzumab), agents targeting B cell activation (*e.g.*, atacicept and belimumab), and Anti-C5 antibody (eculizumab)^[13-15], and others potentially in the investigational pipeline. Most of the work is being conducted in the fields of prevention and treatment of AR, and in time we may be able to effectively manage AR including acute ABMR. However, chronic changes and the lesser understood mechanisms of TG and IFTA may hinder our aim of prolonged graft survival.

TG has evolved as one of the histological features of chronic ABMR^[16]. Overt TG is characterized histologically by glomerular basement membrane duplication in ≥ 1 of the capillary loops, mesangial expansion with or without mesangial hypercellularity, and mesangial cell interposition; glomerulitis can accompany these lesions^[17]. The overall incidence of TG increases with time after transplant, occurring in approximately 20% by 5 years post-transplant^[18,19]. TG is rarely diagnosed clinically within the first year of transplant, as TG lags behind the initial histologic stages of the disease^[18]. In one study, subclinical TG (with stable renal function) was diagnosed in a protocol biopsy at a rate of 2.8% in the first year, which increased to 11.5% by 5 years post-transplant^[18]. TG with significant proteinuria (> 2.5 g/day) is associated with worse graft survival outcomes compared with those with less proteinuria^[20]. In the biopsy, TG is usually accompanied with the features of chronic damage to the allograft parenchyma mainly as fibrous intimal thickening of arteries, arteriolar hyalinosis and segmental and/or global glomerulosclerosis, IFTA and sometimes failure of peritubular capillaries^[16]. Among patients with TG and active ABMR,

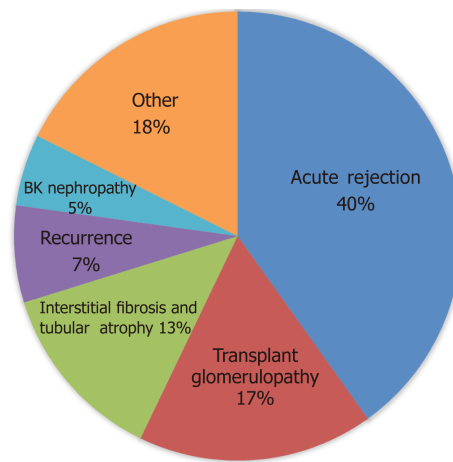


Figure 3 Overall causes of graft failure. Acute rejection is the most common cause of graft failure based on the primary biopsy diagnosis.

outcomes are even worse; in one large observational study, 76% of the recipients lost their graft with a median survival of 1.9 years after the diagnosis of chronic active ABMR^[21]. Overall, TG is associated with poor long-term graft survival, as grafts with TG fail sooner than those without^[22]. Much effort is being made to investigate therapeutic options for the treatment of TG. Cooper *et al.*, studied the effects of high-dose IVIG in chronic ABMR and did not find any favorable outcomes. Nine of 20 treated patients in their study had a follow-up biopsy and only 4 had no histological progression^[23]. Similarly, in a recent randomized double-blinded clinical trial, the addition of IVIG and rituximab was not useful in patients with TG^[24].

IFTA is a final common pathway involving a number of independent and overlapping cellular and molecular pathways^[25]. In a recent study, prior ACR was associated with inflammation within IFTA and presence of inflammation within IFTA was associated with accelerated IFTA, arterial hyperplasia and chronic glomerulopathy along with reduced renal function compared to those without inflammation^[26]. There is no reliable way to differentiate the cause of IFTA based on the morphology alone, or immunohistochemistry and molecular techniques^[27]. Tubular atrophy and interstitial fibrosis progress in parallel^[28]. In one surveillance biopsy among 321 KTRs, interstitial fibrosis was present in 71% of the graft at two years^[28]. To date, there is no consensus about the mechanism or treatment for IFTA but chronic immune rejection and inflammation is considered one of the mechanisms^[29]. Also, immune cell-derived and locally active complement has been associated with the progression of chronic fibrosis^[30]. These suggest that although not as strong association as with TG, IFTA could be related to an immune-derived mechanism leading to graft loss.

Calcineurin inhibitor toxicity, thrombotic microangiopathy, and other causes of graft loss each contributed to 5% or less to graft failure. Our observations have the limitations inherent in this type of study. As a single-center study, it may not be possible to generalize our results to other centers. We looked for the specific causes of graft failure based on the primary biopsy diagnosis, but the specific management based on the biopsy findings was beyond the scope of this study. Similarly, around 50% of our patient population were excluded due to no biopsy within one year prior to the graft failure and it was not possible to determine the histopathological characteristics of those patients. We also excluded the small number of patients with primary graft dysfunction to avoid any surgical and technical issues for graft failure.

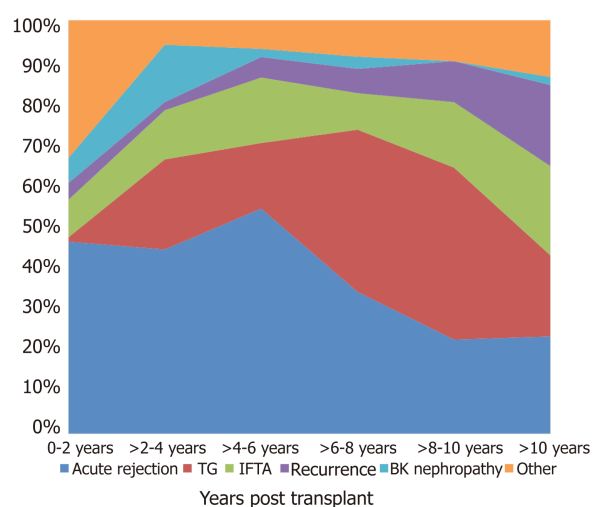
In summary, AR is still the most common cause of early graft failure in the current era of immunosuppression. Most early graft failures within the first six years of transplant are related to AR and are in theory preventable. Similarly, more effective diagnostic, monitoring, and therapeutic strategies for TG and IFTA are needed to improve long-term graft survival.

Table 2 Histopathological characteristics of graft failure based on the cause of end stage renal disease, *n* (%)

	Glomerulonephritis (<i>n</i> = 99)	Diabetes (<i>n</i> = 71)	Hypertension (<i>n</i> = 35)
Acute rejection	49 (49)	21 (30)	19 (54)
Transplant glomerulopathy	14 (14)	14 (20)	4 (11)
Interstitial fibrosis and tubular atrophy	11 (11)	12 (17)	5 (14)
BK nephropathy	3 (3)	7 (10)	2 (6)
Acute tubular necrosis	1 (1)	5 (7)	3 (9)
Recurrence	6 (6)	6 (8)	1 (3)
Other	15 (15)	6 (8)	3 (9)

Table 3 Histopathological characteristics of graft failure based on the induction immunosuppressive agent, *n* (%)

	Depleting (127)	Non-depleting (<i>n</i> = 202)	<i>P</i> value
Acute rejection	46 (36)	86 (43)	0.25
Transplant glomerulopathy	31 (24)	96 (48)	0.003
Interstitial fibrosis and tubular atrophy	13 (10)	30 (15)	0.23
BK nephropathy	7 (6)	10 (5)	0.82
Acute tubular necrosis	6 (5)	10 (5)	0.92
Recurrence	6 (5)	8 (4)	0.74
Other	18 (14)	34 (17)	0.52

**Figure 4** Causes of graft failure since time of transplant. IFTA: Interstitial fibrosis and tubular atrophy.

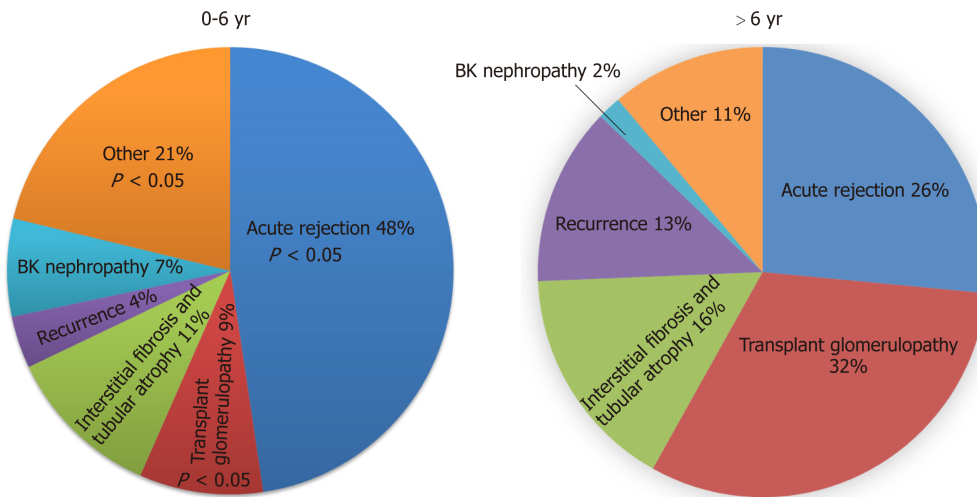


Figure 5 Transplant glomerulopathy is the predominant cause of graft failure after the 6th year. $P < 0.05$ compared to > 6 yr between acute rejection, transplant glomerulopathy and other.

ARTICLE HIGHLIGHTS

Research background

Although, there have been significant improvements in early graft survival due to advances in immunosuppression and the overall medical care of transplant recipients. However, long-term graft survival has only had modest improvement. The causes of “true” late kidney allograft failure remain unclear.

Research motivation

In this study, we explored the causes of graft failure based on various histopathological findings after transplant in the current era, which may allow providers to determine interventions to prevent poor outcomes.

Research objectives

The main objectives, of this study, was to identify the common causes of death censored graft failure among kidney transplant recipients. Knowing the causes may help provider to intervene on time and prevent for the graft loss.

Research methods

This was a single-center, retrospective study among kidney transplant recipients who were transplanted at the University of Wisconsin, and who had graft failure between January 1, 2006 and December 31, 2016 and transplanted between January 1, 1994 to December 31, 2016. Patients were included if they underwent a kidney biopsy within one year prior to the graft failure. We divided histopathological causes of graft failure based on the post-transplant interval divided into 2 years interval, based on the causes of ESRD and also the types of induction immunosuppressive medication. In cases where a patient had multiple biopsy diagnoses, all diagnoses were also reported separately, although the primary diagnosis (first diagnosis) was used for the cause of graft failure.

Research results

A total of 329 kidney transplant recipients fulfilled our selection criteria and were included in the study. The three most common biopsy findings were interstitial fibrosis and tubular atrophy (IFTA, 53%), acute rejection (AR, 43%) and transplant glomerulopathy (TG, 33%). Similarly, the three most common causes of graft failure based on the primary diagnosis were AR (40%), TG (17%), and IFTA (13%). Most grafts failed within two years of post-transplant (36%). Subsequently, approximately 10%-15% of grafts failed every two years: > 2 -4 years (16%), > 4 -6 years (13%), > 6 -8 years (11%), > 8 -10 years (9%) and > 10 years (16%). AR was the most common cause of graft failure in the first six years (48%), whereas TG was the most prevalent cause of graft failure after 6 years (32%) of transplant. Most early graft failures within the first six years of transplant are related to AR and are in theory preventable. Similarly, more effective diagnostic, monitoring, and therapeutic strategies for TG and IFTA are needed to improve long-term graft survival.

Research conclusions

In this study of the cause of graft failure among kidney transplant recipients, we found that the primary cause of graft failure varies with time after transplantation. AR, mainly antibody-mediated rejection (ABMR), was the most common cause of graft failure and accounted for 40% of graft failures, which peaked at 6 years post-transplant. After an AR, TG, one of the most specific histological findings of chronic ABMR, accounted for 17% of graft failure, which

occurred mainly after 6-7 years post-transplant and was the most common cause of graft failure and even surpassed AR as a cause of graft failure. Interestingly, calcineurin inhibitor toxicity was not a common cause of graft failure.

Research perspectives

Further studies in this field and specifically effective treatment of AR is needed to prolong the graft survival. Most of the work is being conducted in the fields of prevention and treatment of AR, and in time we may be able to effectively manage AR including acute ABMR. However, chronic changes and the lesser understood mechanisms of TG and IFTA may hinder our aim of prolonged graft survival and study should focus on the field of prevention or treatment of TG and IFTA.

REFERENCES

- 1 **Pesavento TE.** Kidney transplantation in the context of renal replacement therapy. *Clin J Am Soc Nephrol* 2009; **4**: 2035-2039 [PMID: [19850770](#) DOI: [10.2215/CJN.05500809](#)]
- 2 **Fiebigler W,** Mitterbauer C, Oberbauer R. Health-related quality of life outcomes after kidney transplantation. *Health Qual Life Outcomes* 2004; **2**: 2 [PMID: [14713316](#) DOI: [10.1186/1477-7525-2-2](#)]
- 3 **Parajuli S,** Clark DF, Djamali A. Is Kidney Transplantation a Better State of CKD? Impact on Diagnosis and Management. *Adv Chronic Kidney Dis* 2016; **23**: 287-294 [PMID: [27742382](#) DOI: [10.1053/j.ackd.2016.09.006](#)]
- 4 **Meier-Kriesche HU,** Schold JD, Srinivas TR, Kaplan B. Lack of improvement in renal allograft survival despite a marked decrease in acute rejection rates over the most recent era. *Am J Transplant* 2004; **4**: 378-383 [PMID: [14961990](#) DOI: [10.1111/j.1600-6143.2004.00332.x](#)]
- 5 **Lamb KE,** Lodhi S, Meier-Kriesche HU. Long-term renal allograft survival in the United States: a critical reappraisal. *Am J Transplant* 2011; **11**: 450-462 [PMID: [20973913](#) DOI: [10.1111/j.1600-6143.2010.03283.x](#)]
- 6 **Hariharan S,** Johnson CP, Bresnahan BA, Taranto SE, McIntosh MJ, Stablein D. Improved graft survival after renal transplantation in the United States, 1988 to 1996. *N Engl J Med* 2000; **342**: 605-612 [PMID: [10699159](#) DOI: [10.1056/NEJM200003023420901](#)]
- 7 **Sellarés J,** de Freitas DG, Mengel M, Reeve J, Einecke G, Sis B, Hidalgo LG, Famulski K, Matas A, Halloran PF. Understanding the causes of kidney transplant failure: the dominant role of antibody-mediated rejection and nonadherence. *Am J Transplant* 2012; **12**: 388-399 [PMID: [22081892](#) DOI: [10.1111/j.1600-6143.2011.03840.x](#)]
- 8 **El-Zoghby ZM,** Stegall MD, Lager DJ, Kremers WK, Amer H, Gloor JM, Cosio FG. Identifying specific causes of kidney allograft loss. *Am J Transplant* 2009; **9**: 527-535 [PMID: [19191769](#) DOI: [10.1111/j.1600-6143.2008.02519.x](#)]
- 9 **Chand S,** Atkinson D, Collins C, Briggs D, Ball S, Sharif A, Skordilis K, Vydianath B, Neil D, Borrows R. The Spectrum of Renal Allograft Failure. *PLoS One* 2016; **11**: e0162278 [PMID: [27649571](#) DOI: [10.1371/journal.pone.0162278](#)]
- 10 **Parajuli S,** Mandelbrot DA, Muth B, Mohamed M, Garg N, Aziz F, Redfield RR, Zhong W, Astor BC, Djamali A. Rituximab and Monitoring Strategies for Late Antibody-Mediated Rejection After Kidney Transplantation. *Transplant Direct* 2017; **3**: e227 [PMID: [29536028](#) DOI: [10.1097/TXD.0000000000000746](#)]
- 11 **Husain S,** Sis B. Advances in the understanding of transplant glomerulopathy. *Am J Kidney Dis* 2013; **62**: 352-363 [PMID: [23313456](#) DOI: [10.1053/j.ajkd.2012.10.026](#)]
- 12 **Stegall MD,** Gaston RS, Cosio FG, Matas A. Through a glass darkly: seeking clarity in preventing late kidney transplant failure. *J Am Soc Nephrol* 2015; **26**: 20-29 [PMID: [25097209](#) DOI: [10.1681/ASN.2014040378](#)]
- 13 **Djamali A,** Kaufman DB, Ellis TM, Zhong W, Matas A, Samaniego M. Diagnosis and management of antibody-mediated rejection: current status and novel approaches. *Am J Transplant* 2014; **14**: 255-271 [PMID: [24401076](#) DOI: [10.1111/ajt.12589](#)]
- 14 **Bentall A,** Cornell LD, Gloor JM, Park WD, Gandhi MJ, Winters JL, Chedid MF, Dean PG, Stegall MD. Five-year outcomes in living donor kidney transplants with a positive crossmatch. *Am J Transplant* 2013; **13**: 76-85 [PMID: [23072543](#) DOI: [10.1111/j.1600-6143.2012.04291.x](#)]
- 15 **Stegall MD,** Diwan T, Raghavaiah S, Cornell LD, Burns J, Dean PG, Cosio FG, Gandhi MJ, Kremers W, Gloor JM. Terminal complement inhibition decreases antibody-mediated rejection in sensitized renal transplant recipients. *Am J Transplant* 2011; **11**: 2405-2413 [PMID: [21942930](#) DOI: [10.1111/j.1600-6143.2011.03757.x](#)]
- 16 **Remport A,** Ivanyi B, Mathe Z, Tincam K, Mucsi I, Molnar MZ. Better understanding of transplant glomerulopathy secondary to chronic antibody-mediated rejection. *Nephrol Dial Transplant* 2015; **30**: 1825-1833 [PMID: [25473123](#) DOI: [10.1093/ndt/gfu371](#)]
- 17 **Haas M,** Sis B, Racusen LC, Solez K, Glotz D, Colvin RB, Castro MC, David DS, David-Neto E, Bagnasco SM, Cendales LC, Cornell LD, Demetris AJ, Drachenberg CB, Farver CF, Farris AB, Gibson IW, Kraus E, Liapis H, Loupy A, Nickleleit V, Randhawa P, Rodriguez ER, Rush D, Smith RN, Tan CD, Wallace WD, Mengel M; Banff meeting report writing committee. Banff 2013 meeting report: inclusion of c4d-negative antibody-mediated rejection and antibody-associated arterial lesions. *Am J Transplant* 2014; **14**: 272-283 [PMID: [24472190](#) DOI: [10.1111/ajt.12590](#)]
- 18 **Gloor JM,** Sethi S, Stegall MD, Park WD, Moore SB, DeGoeys S, Griffin MD, Larson TS, Cosio FG. Transplant glomerulopathy: subclinical incidence and association with alloantibody. *Am J Transplant* 2007; **7**: 2124-2132 [PMID: [17608832](#) DOI: [10.1111/j.1600-6143.2007.01895.x](#)]
- 19 **Cosio FG,** Grande JP, Wadei H, Larson TS, Griffin MD, Stegall MD. Predicting subsequent decline in kidney allograft function from early surveillance biopsies. *Am J Transplant* 2005; **5**: 2464-2472 [PMID: [16162196](#) DOI: [10.1111/j.1600-6143.2005.01050.x](#)]
- 20 **Banfi G,** Villa M, Cresseri D, Ponticelli C. The clinical impact of chronic transplant glomerulopathy in cyclosporine era. *Transplantation* 2005; **80**: 1392-1397 [PMID: [16340780](#) DOI: [10.1097/01.tp.0000181167.88133.d2](#)]
- 21 **Redfield RR,** Ellis TM, Zhong W, Scalea JR, Zens TJ, Mandelbrot D, Muth BL, Panzer S, Samaniego M,

- Kaufman DB, Astor BC, Djamali A. Current outcomes of chronic active antibody mediated rejection - A large single center retrospective review using the updated BANFF 2013 criteria. *Hum Immunol* 2016; **77**: 346-352 [PMID: 26867813 DOI: 10.1016/j.humimm.2016.01.018]
- 22 **Cosio FG**, Gloor JM, Sethi S, Stegall MD. Transplant glomerulopathy. *Am J Transplant* 2008; **8**: 492-496 [PMID: 18294145 DOI: 10.1111/j.1600-6143.2007.02104.x]
- 23 **Cooper JE**, Gralla J, Klem P, Chan L, Wiseman AC. High dose intravenous immunoglobulin therapy for donor-specific antibodies in kidney transplant recipients with acute and chronic graft dysfunction. *Transplantation* 2014; **97**: 1253-1259 [PMID: 24937199 DOI: 10.1097/01.TP.0000443226.74584.03]
- 24 **Moreso F**, Crespo M, Ruiz JC, Torres A, Gutierrez-Dalmau A, Osuna A, Perelló M, Pascual J, Torres IB, Redondo-Pachón D, Rodrigo E, Lopez-Hoyos M, Seron D. Treatment of chronic antibody mediated rejection with intravenous immunoglobulins and rituximab: A multicenter, prospective, randomized, double-blind clinical trial. *Am J Transplant* 2018; **18**: 927-935 [PMID: 28949089 DOI: 10.1111/ajt.14520]
- 25 **Farris AB**, Colvin RB. Renal interstitial fibrosis: mechanisms and evaluation. *Curr Opin Nephrol Hypertens* 2012; **21**: 289-300 [PMID: 22449945 DOI: 10.1097/MNH.0b013e3283521cfa]
- 26 **Nankivell BJ**, Shingde M, Keung KL, Fung CL, Borrows RJ, O'Connell PJ, Chapman JR. The causes, significance and consequences of inflammatory fibrosis in kidney transplantation: The Banff i-IFTA lesion. *Am J Transplant* 2018; **18**: 364-376 [PMID: 29194971 DOI: 10.1111/ajt.14609]
- 27 **Haas M**. Chronic allograft nephropathy or interstitial fibrosis and tubular atrophy: what is in a name? *Curr Opin Nephrol Hypertens* 2014; **23**: 245-250 [PMID: 24626060 DOI: 10.1097/01.mnh.0000444811.26884.2d]
- 28 **Cosio FG**, Grande JP, Larson TS, Gloor JM, Velosa JA, Textor SC, Griffin MD, Stegall MD. Kidney allograft fibrosis and atrophy early after living donor transplantation. *Am J Transplant* 2005; **5**: 1130-1136 [PMID: 15816896 DOI: 10.1111/j.1600-6143.2005.00811.x]
- 29 **Nakorchevsky A**, Hewel JA, Kurian SM, Mondala TS, Campbell D, Head SR, Marsh CL, Yates JR, Salomon DR. Molecular mechanisms of chronic kidney transplant rejection via large-scale proteogenomic analysis of tissue biopsies. *J Am Soc Nephrol* 2010; **21**: 362-373 [PMID: 20093355 DOI: 10.1681/ASN.2009060628]
- 30 **Sheen JH**, Heeger PS. Effects of complement activation on allograft injury. *Curr Opin Organ Transplant* 2015; **20**: 468-475 [PMID: 26132735 DOI: 10.1097/MOT.0000000000000216]



Published By Baishideng Publishing Group Inc
7041 Koll Center Parkway, Suite 160, Pleasanton, CA 94566, USA
Telephone: +1-925-2238242
E-mail: bpgoffice@wjgnet.com
Help Desk: <https://www.f6publishing.com/helpdesk>
<https://www.wjgnet.com>

