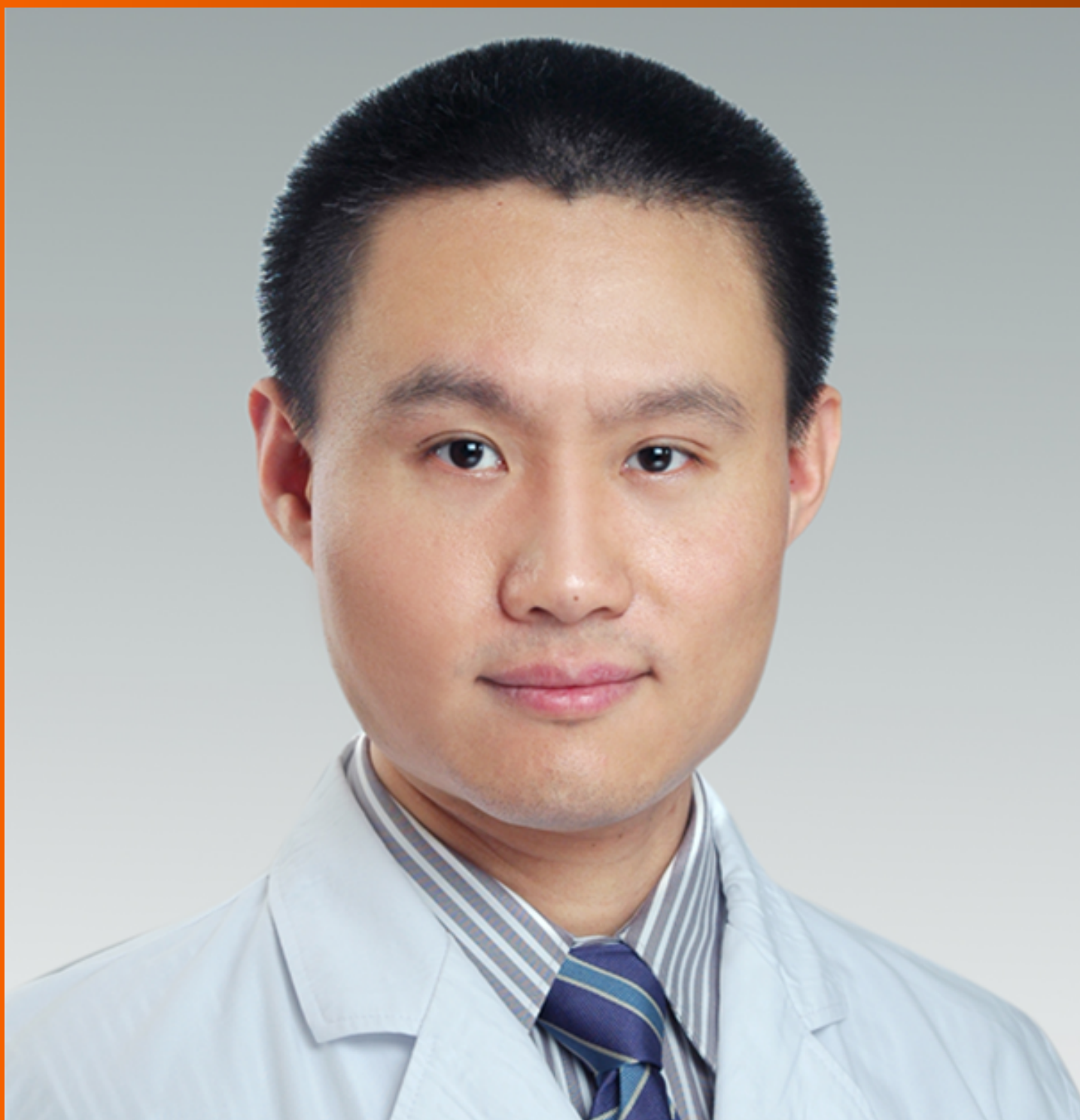


World Journal of *Gastrointestinal Oncology*

World J Gastrointest Oncol 2020 January 15; 12(1): 1-123





REVIEW

- 1 Precision medicine for gastrointestinal cancer: Recent progress and future perspective
Matsuoka T, Yashiro M
- 21 Digestive tract reconstruction options after laparoscopic gastrectomy for gastric cancer
Shen J, Ma X, Yang J, Zhang JP

MINIREVIEWS

- 37 Interpretation of the development of neoadjuvant therapy for gastric cancer based on the vicissitudes of the NCCN guidelines
Wang XZ, Zeng ZY, Ye X, Sun J, Zhang ZM, Kang WM

ORIGINAL ARTICLE

Basic Study

- 54 Identification of candidate biomarkers correlated with pathogenesis of postoperative peritoneal adhesion by using microarray analysis
Bian YY, Yang LL, Yan Y, Zhao M, Chen YQ, Zhou YQ, Wang ZX, Li WL, Zeng L
- 66 Abnormal CD44 activation of hepatocytes with nonalcoholic fatty accumulation in rat hepatocarcinogenesis
Fang M, Yao M, Yang J, Zheng WJ, Wang L, Yao DF

Case Control Study

- 77 Laparoscopic dissection of the hepatic node: The trans lesser omentum approach
Ben-Ishay O

Retrospective Study

- 83 Multi-institutional retrospective analysis of FOLFIRI in patients with advanced biliary tract cancers
Mizrahi JD, Gunchick V, Mody K, Xiao L, Surapaneni P, Shroff RT, Sahai V
- 92 Simultaneous transarterial chemoembolization and radiofrequency ablation for large hepatocellular carcinoma
Duan F, Bai YH, Cui L, Li XH, Yan JY, Wang MQ
- 101 Adenosquamous carcinoma may have an inferior prognosis to signet ring cell carcinoma in patients with stages I and II gastric cancer
Chu YX, Gong HY, Hu QY, Song QB

EVIDENCE-BASED MEDICINE

- 113** Validity of studies suggesting preoperative chemotherapy for resectable thoracic esophageal cancer: A critical appraisal of randomized trials
Manzini G, Klotz U, Henne-Bruns D, Kremer M

ABOUT COVER

Editorial Board Member of *World Journal of Gastrointestinal Oncology*, Xin-Zu Chen, MD, PhD, Associate Professor, Department of Gastrointestinal Surgery and Laboratory of Gastric Cancer, West China Hospital, Sichuan University, Chengdu 610041, Sichuan Province, China

AIMS AND SCOPE

The primary aim of *World Journal of Gastrointestinal Oncology* (WJGO, *World J Gastrointest Oncol*) is to provide scholars and readers from various fields of gastrointestinal oncology with a platform to publish high-quality basic and clinical research articles and communicate their research findings online.

WJGO mainly publishes articles reporting research results and findings obtained in the field of gastrointestinal oncology and covering a wide range of topics including islet cell adenoma, liver cell adenoma, adenomatous polyposis coli, appendiceal neoplasms, bile duct neoplasms, biliary tract neoplasms, hepatocellular carcinoma, islet cell carcinoma, pancreatic ductal carcinoma, cecal neoplasms, colonic neoplasms, colorectal neoplasms, hereditary nonpolyposis colorectal neoplasms, common bile duct neoplasms, duodenal neoplasms, esophageal neoplasms, gallbladder neoplasms, etc.

INDEXING/ABSTRACTING

The WJGO is now indexed in Science Citation Index Expanded (also known as SciSearch®), PubMed, and PubMed Central. The 2019 edition of Journal Citation Reports® cites the 2018 impact factor for WJGO as 2.758 (5-year impact factor: 3.220), ranking WJGO as 52 among 84 journals in gastroenterology and hepatology (quartile in category Q3), and 131 among 229 journals in oncology (quartile in category Q3).

RESPONSIBLE EDITORS FOR THIS ISSUE

Responsible Electronic Editor: *Lu-Lu Qi*
Proofing Production Department Director: *Yun-Xiaojuan Wu*

NAME OF JOURNAL

World Journal of Gastrointestinal Oncology

ISSN

ISSN 1948-5204 (online)

LAUNCH DATE

February 15, 2009

FREQUENCY

Monthly

EDITORS-IN-CHIEF

Monjur Ahmed, Rosa M Jimenez Rodriguez, Pashtoon Kasi

EDITORIAL BOARD MEMBERS

<https://www.wjgnet.com/1948-5204/editorialboard.htm>

EDITORIAL OFFICE

Jin-Lei Wang, Director

PUBLICATION DATE

January 15, 2020

COPYRIGHT

© 2020 Baishideng Publishing Group Inc

INSTRUCTIONS TO AUTHORS

<https://www.wjgnet.com/bpg/gerinfo/204>

GUIDELINES FOR ETHICS DOCUMENTS

<https://www.wjgnet.com/bpg/GerInfo/287>

GUIDELINES FOR NON-NATIVE SPEAKERS OF ENGLISH

<https://www.wjgnet.com/bpg/gerinfo/240>

PUBLICATION MISCONDUCT

<https://www.wjgnet.com/bpg/gerinfo/208>

ARTICLE PROCESSING CHARGE

<https://www.wjgnet.com/bpg/gerinfo/242>

STEPS FOR SUBMITTING MANUSCRIPTS

<https://www.wjgnet.com/bpg/GerInfo/239>

ONLINE SUBMISSION

<https://www.f6publishing.com>



Case Control Study

Laparoscopic dissection of the hepatic node: The trans lesser omentum approach

Offir Ben-Ishay

ORCID number: Offir Ben-Ishay (0000-0003-3603-3843).

Author contributions: Ben-Ishay O designed, drafted, and critically reviewed the manuscript.

Institutional review board

statement: The study was approved by the institutional review board of the Rambam Health Care Campus, Haifa, Israel.

Informed consent statement:

Informed consent was exempt by the institutional review board due to the retrospective nature of the study and no impact on the clinical outcome of the study.

Conflict-of-interest statement: The author has no conflict of interest.

STROBE statement: The authors have read the STROBE Statement-checklist of items, and the manuscript was prepared and revised according to the STROBE Statement-checklist of items.

Open-Access: This article is an open-access article which was selected by an in-house editor and fully peer-reviewed by external reviewers. It is distributed in accordance with the Creative Commons Attribution Non Commercial (CC BY-NC 4.0) license, which permits others to distribute, remix, adapt, build upon this work non-commercially, and license their derivative works on different terms, provided the original work is properly cited and the use is non-commercial. See: <http://creativecommons.org/licenses/by-nc/4.0/>

Offir Ben-Ishay, Department of General Surgery, Rambam Health Care Campus, Haifa 35254, Israel

Corresponding author: Offir Ben-Ishay, MD, Director, Surgical Oncology, Department of General Surgery, Division of Surgery, Rambam Health Care Campus, 8 Ha'Aliyah St., Haifa 35254, Israel. o_ben-ishay@rambam.health.gov.il

Abstract

BACKGROUND

Diagnosis of lympho-proliferative diseases is sometimes challenging. Excisional lymph node biopsy is the standard of care. Five percent of the patients will present with abdominal or retroperitoneal lymphadenopathy alone. Advancements in endoscopic techniques allow for access to fine needle biopsy in complicated areas, but this often does not meet the standard guidelines for diagnosis.

AIM

To investigate the results of laparoscopic excisional biopsy of the hepatic node (LEBHN) through a trans lesser omentum approach.

METHODS

Data of all patients undergoing LEBHN were collected retrospectively from patients' electronic charts over a period of 1 year. Data collected included age, gender, suspected disease, number of previous biopsies and biopsy method, surgical approach, intraoperative complications, operative time, post-operative complications, mortality, and final diagnosis.

RESULTS

Six patients were operated in this technique during the time frame of the study, 66.6% ($n = 4$) were females, and median age was 55 years (range: 25-72 years). We present no conversions from laparoscopy to laparotomy, and mean operating time was 51.2 min. Mean length of hospital stay was 1 d, and morbidity and mortality were nil. Most importantly, this technique offered definite diagnosis and appropriate treatment in all patients. Final diagnosis included two patients with lymphoma (Hodgkin and Follicular), two patients with sarcoidosis, and two patients with reactive lymph nodes with no evidence of malignancy.

CONCLUSION

In conclusion, this technique seems to be feasible and safe and may offer a simple

Manuscript source: Unsolicited manuscript

Received: July 2, 2019

Peer-review started: July 3, 2019

First decision: July 31, 2019

Revised: August 24, 2019

Accepted: September 26, 2019

Article in press: September 26, 2019

Published online: January 15, 2020

P-Reviewer: Isik A, Sergi CM

S-Editor: Ma YJ

L-Editor: Filipodia

E-Editor: Qi LL



approach for a definite diagnosis for what seems to be a complicated anatomical area.

Key words: Lymph node; Diagnosis; Lymphoma; Laparoscopy; Biopsy; Retroperitoneum

©The Author(s) 2020. Published by Baishideng Publishing Group Inc. All rights reserved.

Core tip: Diagnosis of lympho-proliferative diseases is sometimes challenging, and laparoscopy is an essential tool. Laparoscopic excisional biopsy of the hepatic node seems to be feasible and safe and may offer a simple approach for a definite diagnosis for what seems to be a complicated anatomical area.

Citation: Ben-Ishay O. Laparoscopic dissection of the hepatic node: The trans lesser omentum approach. *World J Gastrointest Oncol* 2020; 12(1): 77-82

URL: <https://www.wjgnet.com/1948-5204/full/v12/i1/77.htm>

DOI: <https://dx.doi.org/10.4251/wjgo.v12.i1.77>

INTRODUCTION

Diagnosis of lympho-proliferative diseases is sometimes challenging. Based upon the current international guidelines^[1,2], a surgically excised tissue biopsy is widely accepted as the gold standard for the diagnosis of lymphoma. An excisional biopsy of a lymph node (LN) allows assessment of the micro-architecture and provides adequate material for immunocytochemistry, flow cytometry, fluorescence *in situ* hybridization studies, and extraction of DNA and RNA for molecular diagnostics. The major disadvantages of surgical biopsies are the probable need for general anesthesia and deferrals due to the need of a surgical consult and operating room time. These issues are addressed through percutaneous and endoscopic core needle biopsies or fine needle aspiration with cellblock techniques.

When possible, a superficial LN, most often from the groin or axilla, should be excised, and this can be done simply under local anesthesia in day care setup. Often though this is not possible, and an intra-abdominal LN must be obtained.

The intra-abdominal lymphatic system is complex, and lymphadenopathy is often retroperitoneal, along the celiac axis and in the pelvis. Traditionally, laparoscopic biopsies of retroperitoneal or celiac nodes are considered complicated. Lymph nodes that are distributed along the celiac trunk include the root of the left gastric (station 7), the proper hepatic artery (station 8), and the splenic artery (station 9).

The hepatic node is the lymph node lying on the proper hepatic artery right above the neck of the pancreas. This node is quite often enlarged and has an abnormal fluorodeoxyglucose uptake on positron emission tomography (Figure 1).

Approach to the supra-pancreatic area is complex; the current study presents our experience with six patients who underwent laparoscopic excision of the hepatic node (LEBHN) through a trans lesser omentum approach.

MATERIALS AND METHODS

Surgical technique

After general anesthesia was induced, the patient was placed in a lithotomy position, and the operating table was maintained in 20° into the reverse Trendelenburg position. The surgeon was located between the legs of the patient, while the first assistant and the camera operator were placed to the left and the right side of the patient respectively.

After insufflation of the abdomen with CO₂ through a veres needle, a 10 mm trocar was placed above the umbilicus. The camera was then inserted, and an exploration of the abdomen was performed. A second 10 mm trocar was placed in mid left abdomen, and three 5 mm trocars were placed sub-xifoide, mid right quadrant, and left upper quadrant.

The left lobe of the liver was retracted upwards towards the diaphragm, and the lesser omentum with its pars flaccida was exposed. The pars flaccida was excised, the supra-pancreatic area was exposed, and the hepatic node was then observed (Figure

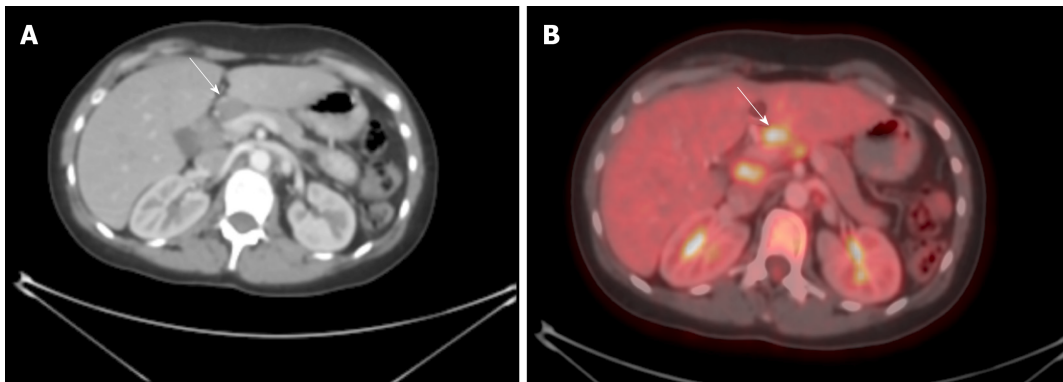


Figure 1 Abnormal FDG uptake on positron emission tomography. A: Computed tomography scan of the abdomen showing enlarged hepatic LN; B: Positron emission tomography showing abnormal FDG uptake in the same LN. FDG: Fluorodeoxyglucose; LN: Lymph node.

2A). The peritoneal layer above the hepatic node was carefully dissected with an electric cautery, and the node was then dissected carefully with bipolar energy (Figure 2B).

Data collection

Data of all patients undergoing LEBHN over a period of 1 year were collected retrospectively within the array of the surgical oncology service of the Department of general surgery at the Rambam Health Care Campus. Data included demographics, preoperative data including number of previous biopsies, previous biopsy methods used, and operative and post-operative data. Operative and postoperative complications were recorded.

RESULTS

Six patients were operated in this technique during the time frame of the study, 66.6% ($n = 4$) were females, and the median age was 55 years (25-72). Two patients had a suspected recurrence of a previously treated lymphoma. Three patients had one previous attempt for tissue diagnosis, and one had three of them. One patient had percutaneous attempt for biopsy, four had endoscopic biopsies through endoscopic ultrasound, and one patient had a mediastinoscopy with mediastinal biopsy. Table 1 depicts the demographic operative and post-operative characteristics of the entire cohort. All patients were operated in a laparoscopic approach with no conversions to laparotomy. All patients had an uneventful operation with no operative or post-operative complications. Mean length of hospital stay was 1 d, and morbidity and mortality were nil.

DISCUSSION

Retroperitoneal lymphadenopathy occurs in various hematologic and granulomatous diseases. Approximately 5% of patients will have abdominal lymphadenopathy without enlargement of LN in superficial areas^[4]. Advancements in percutaneous and endoscopic techniques allow diagnosis through minor ambulatory procedures. Laparoscopic abdominal and retroperitoneal lymph node biopsy was previously proven to be feasible and safe in the diagnosis of lympho-proliferative diseases^[3-13]. Biopsy of celiac nodes or hepatic nodes though has been described occasionally in the literature. The current study describes six patients that underwent a laparoscopic celiac node biopsy in a trans lesser omentum approach. The advantages of this technique over other endoscopic approaches are the high chances for a definitive diagnosis, a better diagnostic yield, and early instigation of treatment.

The approach to the supra-pancreatic area is possible through dissection of the gastro-colic ligament and entrance to the lesser sac, this technique allows full exposure of the pancreas, splenic artery, and hepatic artery. Pisano *et al*^[4] used this approach in four cases. This technique carried some disadvantages as mobilization of the large curvature of the stomach increases the rate of complications, such as intraoperative hemorrhage and injury to the stomach, and significant increases the operating time.

In our small case series, there were no conversions to laparotomy. The outcomes of

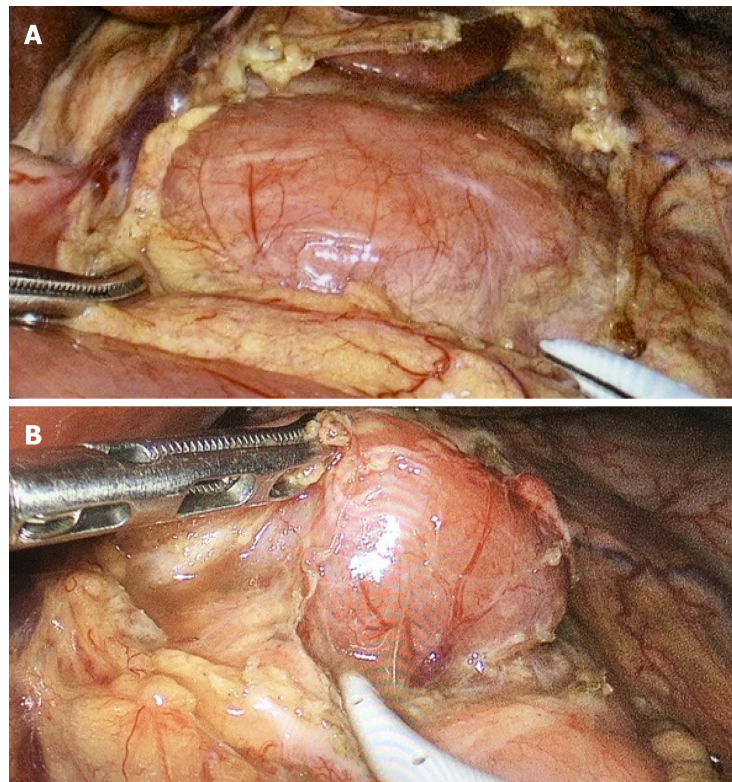


Figure 2 The left lobe of the liver is retracted upwards towards the diaphragm and the lesser omentum with its pars flaccida is exposed. A: Exposure of the hepatic node excising the lesser omentum; B: Dissection of the hepatic node.

operative time, blood loss, and complications were acceptable. All patients received an accurate diagnosis without any false-negative results.

Although the results of this current patient series are good, the small sample size does not permit firm conclusions.

In conclusion, LEBHN seems to be feasible and safe, and surgeons may use this simple approach to a fairly complicated anatomical area to patients who do not have access to superficial lymph nodes.

Table 1 Patients' demographic and operative characteristics

Age	Gender	No of Biopsies	FNA	FNB	ORT	LOS	Complications	Diagnosis
72	F	1	Yes	No	71	1	No	Follicular LY
39	F	1	No	No	53	1	No	Hodgkin LY
25	M	0	No	No	49	1	No	Sarcoidosis
60	F	0	No	No	65	1	No	Reactive LN
69	F	3	Yes	Yes	47	1	No	Sarcoidosis
51	M	1	No	No	22	1	No	Reactive LN

F: Female; M: Male; FNA: Fine needle aspiration; FNB: Fine needle biopsy; ORT: Operating time; LOS: Length of hospital stay; LY: Lymphoma.

ARTICLE HIGHLIGHTS

Research background

Diagnosis of lympho-proliferative diseases is challenging. Although an excisional biopsy of a complete lymph node is the gold standard for diagnosis, endoscopic or percutaneous techniques are often used due to the surgical challenge the location of the lymph node imposes.

Research motivation

The current study describes a small case series of laparoscopic dissection of the hepatic node through a trans lesser omentum approach. This approach is rarely discussed in the English literature.

Research objectives

The study describes the clinical and surgical results of this novel technique.

Research methods

A single center, retrospective evaluation of patients undergoing laparoscopic dissection and excisional biopsy of the hepatic node.

Research results

During the time frame of the study, six patients were operated using this novel technique, with no conversions to laparotomy, no intra and post-operative complications and acceptable operating time. Most importantly, surgery yielded a definite diagnosis in all patients, and there was no need for further investigation.

Research conclusions

Laparoscopic dissection of the hepatic node seems to be feasible and safe, and surgeons may use this simple approach to a fairly complicated anatomical area in highly selected patients who do not have access to superficial lymph nodes.

Research perspectives

This study suggests that approach to the hepatic node and the celiac axis is easily and safely performed through a trans lesser omentum approach. This may facilitate future discussion on how to achieve the diagnosis of lympho-proliferative disease in patients who do not have enlarged and pathological superficial lymph nodes.

REFERENCES

- 1 **Cheson BD**, Fisher RI, Barrington SF, Cavalli F, Schwartz LH, Zucca E, Lister TA; Alliance, Australasian Leukaemia and Lymphoma Group; Eastern Cooperative Oncology Group; European Mantle Cell Lymphoma Consortium; Italian Lymphoma Foundation; European Organisation for Research; Treatment of Cancer/Dutch Hemato-Oncology Group; Grupo Español de Médula Ósea; German High-Grade Lymphoma Study Group; German Hodgkin's Study Group; Japanese Lymphoma Study Group; Lymphoma Study Association; NCIC Clinical Trials Group; Nordic Lymphoma Study Group; Southwest Oncology Group; United Kingdom National Cancer Research Institute. Recommendations for initial evaluation, staging, and response assessment of Hodgkin and non-Hodgkin lymphoma: the Lugano classification. *J Clin Oncol* 2014; **32**: 3059-3068 [PMID: 25113753 DOI: 10.1200/JCO.2013.54.8800]
- 2 **Tilly H**, Gomes da Silva M, Vitolo U, Jack A, Meignan M, Lopez-Guillermo A, Walewski J, André M, Johnson PW, Pfreundschuh M, Ladetto M; ESMO Guidelines Committee. Diffuse large B-cell lymphoma (DLBCL): ESMO Clinical Practice Guidelines for diagnosis, treatment and follow-up. *Ann Oncol* 2015; **26** Suppl 5: v116-v125 [PMID: 26314773 DOI: 10.1093/annonc/mdv304]
- 3 **Durai R**, Mir N, Ng PC. Laparoscopic retroperitoneal/mesenteric lymph node sampling: a safe and effective technique. *Singapore Med J* 2011; **52**: 758-762 [PMID: 22009398 DOI: 10.1007/s00508-011-0065-1]
- 4 **Pisano G**, Calò PG, Piras S, Sanna S, Manca A, Tatti A, Nicolosi A. Laparoscopic lymph node biopsy in the diagnosis of lymphoma. Indications and results. *Ann Ital Chir* 2012; **83**: 469-476 [PMID: 23082720]

- DOI: [10.2319/012413-76.1](https://doi.org/10.2319/012413-76.1)]
- 5 **Cowles RA**, Yahanda AM. Laparoscopic biopsy of abdominal retroperitoneal lymphadenopathy for the diagnosis of lymphoma. *J Am Coll Surg* 2000; **191**: 108-113 [PMID: [10898191](https://pubmed.ncbi.nlm.nih.gov/10898191/)] DOI: [10.1016/S1072-7515\(00\)00279-9](https://doi.org/10.1016/S1072-7515(00)00279-9)]
- 6 **Gossot D**, de Kerviler E, Brice P, Mariette X, Meignin V, Cazals-Hatem D, Fria J, Célrier M. Surgical endoscopic techniques in the diagnosis and follow-up of patients with lymphoma. *Br J Surg* 1998; **85**: 1107-1110 [PMID: [9718007](https://pubmed.ncbi.nlm.nih.gov/9718007/)] DOI: [10.1046/j.1365-2168.1998.00774.x](https://doi.org/10.1046/j.1365-2168.1998.00774.x)]
- 7 **Strickler JG**, Donohue JH, Porter LE, Habermann TM. Laparoscopic biopsy for suspected abdominal lymphoma. *Mod Pathol* 1998; **11**: 831-836 [PMID: [9758362](https://pubmed.ncbi.nlm.nih.gov/9758362/)]
- 8 **Walsh RM**, Heniford BT. Role of laparoscopy for Hodgkin's and non-Hodgkin's lymphoma. *Semin Surg Oncol* 1999; **16**: 284-292 [PMID: [10332774](https://pubmed.ncbi.nlm.nih.gov/10332774/)] DOI: [10.1002/\(SICI\)1098-2388\(199906\)16:43.0.CO;2-F](https://doi.org/10.1002/(SICI)1098-2388(199906)16:43.0.CO;2-F)]
- 9 **Silecchia G**, Fantini A, Raparelli L, De Leo A, Vitolo D, Monarca B, Bezzi M, Rosato P, Basso N. Management of abdominal lymphoproliferative diseases in the era of laparoscopy. *Am J Surg* 1999; **177**: 325-330 [PMID: [10326853](https://pubmed.ncbi.nlm.nih.gov/10326853/)] DOI: [10.1016/S0002-9610\(99\)00056-2](https://doi.org/10.1016/S0002-9610(99)00056-2)]
- 10 **Silecchia G**, Raparelli L, Perrotta N, Fantini A, Fabiano P, Monarca B, Basso N. Accuracy of laparoscopy in the diagnosis and staging of lymphoproliferative diseases. *World J Surg* 2003; **27**: 653-658 [PMID: [12734679](https://pubmed.ncbi.nlm.nih.gov/12734679/)] DOI: [10.1007/s00268-003-6692-6](https://doi.org/10.1007/s00268-003-6692-6)]
- 11 **Asoglu O**, Porter L, Donohue JH, Cha SS. Laparoscopy for the definitive diagnosis of intra-abdominal lymphoma. *Mayo Clin Proc* 2005; **80**: 625-631 [PMID: [15887430](https://pubmed.ncbi.nlm.nih.gov/15887430/)] DOI: [10.4065/80.5.625](https://doi.org/10.4065/80.5.625)]
- 12 **Casaccia M**, Torelli P, Cavaliere D, Panaro F, Nardi I, Rossi E, Spriano M, Bacigalupo A, Gentile R, Valente U. Laparoscopic lymph node biopsy in intra-abdominal lymphoma: high diagnostic accuracy achieved with a minimally invasive procedure. *Surg Laparosc Endosc Percutan Tech* 2007; **17**: 175-178 [PMID: [17581460](https://pubmed.ncbi.nlm.nih.gov/17581460/)] DOI: [10.1097/SLE.0b013e31804b41c9](https://doi.org/10.1097/SLE.0b013e31804b41c9)]
- 13 **Daly SC**, Klairmont M, Arslan B, Vigneswaran Y, Roggin KF, Ujiki MB, Denham W, Millikan KW, Luu MB, Deziel DJ, Myers JA. Laparoscopy has a superior diagnostic yield than percutaneous image-guided biopsy for suspected intra-abdominal lymphoma. *Surg Endosc* 2015; **29**: 2496-2499 [PMID: [25492451](https://pubmed.ncbi.nlm.nih.gov/25492451/)] DOI: [10.1007/s00464-014-4004-x](https://doi.org/10.1007/s00464-014-4004-x)]



Published By Baishideng Publishing Group Inc
7041 Koll Center Parkway, Suite 160, Pleasanton, CA 94566, USA
Telephone: +1-925-2238242
E-mail: bpgoffice@wjgnet.com
Help Desk: <https://www.f6publishing.com/helpdesk>
<https://www.wjgnet.com>

