

World Journal of *Clinical Cases*

World J Clin Cases 2019 December 6; 7(23): 3915-4171



**REVIEW**

- 3915** Overview of organic anion transporters and organic anion transporter polypeptides and their roles in the liver
Li TT, An JX, Xu JY, Tuo BG

ORIGINAL ARTICLE**Observational Study**

- 3934** Value of early diagnosis of sepsis complicated with acute kidney injury by renal contrast-enhanced ultrasound
Wang XY, Pang YP, Jiang T, Wang S, Li JT, Shi BM, Yu C
- 3945** Value of elastography point quantification in improving the diagnostic accuracy of early diabetic kidney disease
Liu QY, Duan Q, Fu XH, Fu LQ, Xia HW, Wan YL
- 3957** Resection of recurrent third branchial cleft fistulas assisted by flexible pharyngotomy
Ding XQ, Zhu X, Li L, Feng X, Huang ZC
- 3964** Therapeutic efficacy of acupuncture combined with neuromuscular joint facilitation in treatment of hemiplegic shoulder pain
Wei YH, Du DC, Jiang K
- 3971** Comparison of intra-articular injection of parecoxib *vs* oral administration of celecoxib for the clinical efficacy in the treatment of early knee osteoarthritis
Lu L, Xie Y, Gan K, Huang XW

Retrospective Study

- 3980** Celiomesenteric trunk: New classification based on multidetector computed tomography angiographic findings and probable embryological mechanisms
Tang W, Shi J, Kuang LQ, Tang SY, Wang Y

Prospective Study

- 3990** Interaction of arylsulfatases A and B with maspin: A possible explanation for dysregulation of tumor cell metabolism and invasive potential of colorectal cancer
Kovacs Z, Jung I, Szalman K, Baniás L, Bara TJ, Gurzu S

CASE REPORT

- 4004** Recuperation of severe tumoral calcinosis in a dialysis patient: A case report
Westermann L, Isbell LK, Breitenfeldt MK, Arnold F, Röthele E, Schneider J, Widmeier E

- 4011** Robotic wedge resection of a rare gastric perivascular epithelioid cell tumor: A case report
Marano A, Maione F, Woo Y, Pellegrino L, Geretto P, Sasia D, Fortunato M, Orcioni GF, Priotto R, Fasoli R, Borghi F
- 4020** Primary parahiatal hernias: A case report and review of the literature
Preda SD, Pătrașcu Ș, Ungureanu BS, Cristian D, Bințișan V, Nica CM, Calu V, Strâmbu V, Sapalidis K, Șurlin VM
- 4029** Diagnosis of Laron syndrome using monoplex-polymerase chain reaction technology with a whole-genome amplification template: A case report
Neumann A, Alcántara-Ortigoza MÁ, González-del Ángel A, Camargo-Diaz F, López-Bayghen E
- 4036** *In-vitro* proliferation assay with recycled ascitic cancer cells in malignant pleural mesothelioma: A case report
Anayama T, Taguchi M, Tatenuma T, Okada H, Miyazaki R, Hirohashi K, Kume M, Matsusaki K, Orihashi K
- 4044** Distant metastasis in choroidal melanoma with spontaneous corneal perforation and intratumoral calcification: A case report
Wang TW, Liu HW, Bee YS
- 4052** Secondary Parkinson disease caused by breast cancer during pregnancy: A case report
Li L
- 4057** Pulmonary embolism and deep vein thrombosis caused by nitrous oxide abuse: A case report
Sun W, Liao JP, Hu Y, Zhang W, Ma J, Wang GF
- 4063** Micronodular thymic tumor with lymphoid stroma: A case report and review of the literature
Wang B, Li K, Song QK, Wang XH, Yang L, Zhang HL, Zhong DR
- 4075** Diffuse large B cell lymphoma with bilateral adrenal and hypothalamic involvement: A case report and literature review
An P, Chen K, Yang GQ, Dou JT, Chen YL, Jin XY, Wang XL, Mu YM, Wang QS
- 4084** Urethral pressure profilometry in artificial urinary sphincter implantation: A case report
Meng LF, Liu XD, Wang M, Zhang W, Zhang YG
- 4091** Hydroxyurea-induced cutaneous squamous cell carcinoma: A case report
Xu Y, Liu J
- 4098** Recurrent hypotension induced by sacubitril/valsartan in cardiomyopathy secondary to Duchenne muscular dystrophy: A case report
Li JM, Chen H
- 4106** Complete duodenal obstruction induced by groove pancreatitis: A case report
Wang YL, Tong CH, Yu JH, Chen ZL, Fu H, Yang JH, Zhu X, Lu BC

- 4111** Radiological aspects of giant hepatocellular adenoma of the left liver: A case report
Zheng LP, Hu CD, Wang J, Chen XJ, Shen YY
- 4119** Mixed serous-neuroendocrine neoplasm of the pancreas: A case report and review of the literature
Xu YM, Li ZW, Wu HY, Fan XS, Sun Q
- 4130** Rigid esophagoscopy combined with angle endoscopy for treatment of superior mediastinal foreign bodies penetrating into the esophagus caused by neck trauma: A case report
Wang D, Gao CB
- 4137** Left armpit subcutaneous metastasis of gastric cancer: A case report
He FJ, Zhang P, Wang MJ, Chen Y, Zhuang W
- 4144** Bouveret syndrome: A case report
Wang F, Du ZQ, Chen YL, Chen TM, Wang Y, Zhou XR
- 4150** Fatal complications in a patient with severe multi-space infections in the oral and maxillofacial head and neck regions: A case report
Dai TG, Ran HB, Qiu YX, Xu B, Cheng JQ, Liu YK
- 4157** Management of massive fistula bleeding after endoscopic ultrasound-guided pancreatic pseudocyst drainage using hemostatic forceps: A case report
Ge N, Sun SY
- 4163** Pure squamous cell carcinoma of the gallbladder locally invading the liver and abdominal cavity: A case report and review of the literature
Jin S, Zhang L, Wei YF, Zhang HJ, Wang CY, Zou H, Hu JM, Jiang JF, Pang LJ

ABOUT COVER

Editorial Board Member of *World Journal of Clinical Cases*, Consolato M Sergi, FRCP (C), MD, PhD, Professor, Department of Lab Medicine and Pathology, University of Alberta, Edmonton T6G 2B7, Canada

AIMS AND SCOPE

The primary aim of *World Journal of Clinical Cases* (WJCC, *World J Clin Cases*) is to provide scholars and readers from various fields of clinical medicine with a platform to publish high-quality clinical research articles and communicate their research findings online.

WJCC mainly publishes articles reporting research results and findings obtained in the field of clinical medicine and covering a wide range of topics, including case control studies, retrospective cohort studies, retrospective studies, clinical trials studies, observational studies, prospective studies, randomized controlled trials, randomized clinical trials, systematic reviews, meta-analysis, and case reports.

INDEXING/ABSTRACTING

The WJCC is now indexed in PubMed, PubMed Central, Science Citation Index Expanded (also known as SciSearch®), and Journal Citation Reports/Science Edition. The 2019 Edition of Journal Citation Reports cites the 2018 impact factor for WJCC as 1.153 (5-year impact factor: N/A), ranking WJCC as 99 among 160 journals in Medicine, General and Internal (quartile in category Q3).

RESPONSIBLE EDITORS FOR THIS ISSUE

Responsible Electronic Editor: *Yan-Xia Xing*

Proofing Production Department Director: *Xiang Li*

NAME OF JOURNAL

World Journal of Clinical Cases

ISSN

ISSN 2307-8960 (online)

LAUNCH DATE

April 16, 2013

FREQUENCY

Semimonthly

EDITORS-IN-CHIEF

Dennis A Bloomfield, Bao-Gan Peng, Sandro Vento

EDITORIAL BOARD MEMBERS

<https://www.wjnet.com/2307-8960/editorialboard.htm>

EDITORIAL OFFICE

Jin-Lei Wang, Director

PUBLICATION DATE

December 6, 2019

COPYRIGHT

© 2019 Baishideng Publishing Group Inc

INSTRUCTIONS TO AUTHORS

<https://www.wjnet.com/bpg/gerinfo/204>

GUIDELINES FOR ETHICS DOCUMENTS

<https://www.wjnet.com/bpg/GerInfo/287>

GUIDELINES FOR NON-NATIVE SPEAKERS OF ENGLISH

<https://www.wjnet.com/bpg/gerinfo/240>

PUBLICATION MISCONDUCT

<https://www.wjnet.com/bpg/gerinfo/208>

ARTICLE PROCESSING CHARGE

<https://www.wjnet.com/bpg/gerinfo/242>

STEPS FOR SUBMITTING MANUSCRIPTS

<https://www.wjnet.com/bpg/GerInfo/239>

ONLINE SUBMISSION

<https://www.f6publishing.com>

Diffuse large B cell lymphoma with bilateral adrenal and hypothalamic involvement: A case report and literature review

Ping An, Kang Chen, Guo-Qing Yang, Jing-Tao Dou, Yu-Long Chen, Xin-Ye Jin, Xian-Ling Wang, Yi-Ming Mu, Quan-Shun Wang

ORCID number: Ping An (0000-0001-7600-4508); Kang Chen (0000-0003-2258-4097); Guo-Qing Yang (0000-0003-0909-8991); Jing-Tao Dou (0000-0003-2208-4463); Yu-Long Chen (0000-0002-4453-355X); Xin-Ye Jin (0000-0001-7652-5733); Xian-Ling Wang (0000-0001-7350-4101); Yi-Ming Mu (0000-0002-3344-3540); Quan-Shun Wang (0000-0003-4721-1641).

Author contributions: Chen K made substantial contributions to conception and design of the case report; An P analyzed the data and drafted the manuscript; Chen YL and Jin XY made substantial contributions to acquisition of data; Yang GQ, Dou JT, and Wang QS made critical revisions related to important intellectual content of the manuscript; Wang XL made substantial contributions to interpretation of data; Mu YM provided advice for this report; and all authors have approved the final version to be published.

Informed consent statement: Written informed consent was obtained from the patient for publication of this report and any accompanying images.

Conflict-of-interest statement: The authors declare that they have no conflicts of interest.

CARE Checklist (2016) statement: The authors have read the CARE Checklist (2016), and the manuscript was prepared and revised according to the CARE Checklist (2016).

Open-Access: This article is an

Ping An, Kang Chen, Guo-Qing Yang, Jing-Tao Dou, Yu-Long Chen, Xin-Ye Jin, Xian-Ling Wang, Yi-Ming Mu, Department of Endocrinology, Chinese PLA General Hospital, Beijing 100853, China

Quan-Shun Wang, Department of Hematology, Chinese PLA General Hospital, Beijing 100853, China

Corresponding author: Kang Chen, MD, PhD, Assistant Professor, Department of Endocrinology, Chinese People's Liberation Army General Hospital, 28 Fuxing Road, Beijing 100853, China. cycon_ck@yeah.net

Telephone: +86-18801217670

Fax: +86-10-66937711

Abstract

BACKGROUND

Non-Hodgkin's lymphoma (NHL) can involve extralymphatic organs, resulting in diverse clinical manifestations, especially if the endocrine organs are affected. This type of involvement can often be difficult to detect accurately. Until now, no patients with NHL and concomitant bilateral adrenal and hypothalamic involvement have been reported. The purpose of this article is to discuss the diagnosis and treatment of lymphoma with bilateral adrenal gland and hypothalamic involvement so as to help physicians avoid misdiagnosis and missed diagnosis.

CASE SUMMARY

We describe a case of a 52-years-old male patient with bilateral adrenal masses, who presented with a fever of unknown origin on admission. Subsequently, hypopituitarism of the anterior pituitary followed by posterior pituitary developed. ¹⁸fluorine-fluorodeoxyglucose positron emission tomography/computed tomography (PET/CT) showed lesions with a high metabolism in both adrenal glands, hypothalamus, left supraclavicular lymph nodes, and other organs. The etiological diagnosis was determined based on a left supraclavicular lymph node biopsy. The patient, who eventually present with panhypopituitarism, was finally diagnosed with diffuse large B cell lymphoma with bilateral adrenal gland and hypothalamic involvement. After immunochemotherapy, glucocorticoids administration and desmopressin acetate replacement therapy, the symptoms of fever and panhypopituitarism improved, and all the lesions reduced in size.

open-access article which was selected by an in-house editor and fully peer-reviewed by external reviewers. It is distributed in accordance with the Creative Commons Attribution Non Commercial (CC BY-NC 4.0) license, which permits others to distribute, remix, adapt, build upon this work non-commercially, and license their derivative works on different terms, provided the original work is properly cited and the use is non-commercial. See: <http://creativecommons.org/licenses/by-nc/4.0/>

Manuscript source: Unsolicited manuscript

Received: September 7, 2019

Peer-review started: September 7, 2019

First decision: September 23, 2019

Revised: October 22, 2019

Accepted: November 14, 2019

Article in press: November 14, 2019

Published online: December 6, 2019

P-Reviewer: Paydas S, Teragawa H

S-Editor: Wang JL

L-Editor: MedE-Ma JY

E-Editor: Wu YXJ



CONCLUSION

This report demonstrates that, although synchronous involvement of two endocrine organs is rare in NHL, extra caution should be taken when dysfunction occurs in multiple endocrine organs.

Key words: Non-Hodgkin's lymphoma; Bilateral adrenal glands; Hypothalamus; Panhypopituitarism; Case report

©The Author(s) 2019. Published by Baishideng Publishing Group Inc. All rights reserved.

Core tip: The synchronous involvement of two endocrine organs is rare in Non-Hodgkin's lymphoma (NHL). This is the first case of NHL with bilateral adrenal gland and hypothalamic involvement that caused adrenocortical insufficiency and panhypopituitarism. The presentation created a diagnostic dilemma, which was resolved by determination of various endocrine hormone levels, biopsy, and ¹⁸fluorine-fluorodeoxyglucose positron emission tomography/computed tomography. This article aims to discuss the treatment approaches available when a patient with NHL has multiple endocrine organs involved. This report can help physicians avoid misdiagnosis of this disease.

Citation: An P, Chen K, Yang GQ, Dou JT, Chen YL, Jin XY, Wang XL, Mu YM, Wang QS. Diffuse large B cell lymphoma with bilateral adrenal and hypothalamic involvement: A case report and literature review. *World J Clin Cases* 2019; 7(23): 4075-4083

URL: <https://www.wjnet.com/2307-8960/full/v7/i23/4075.htm>

DOI: <https://dx.doi.org/10.12998/wjcc.v7.i23.4075>

INTRODUCTION

The clinical manifestations of non-Hodgkin's lymphoma (NHL) are not specific. When other organs are involved, the clinical manifestations of NHL are complex and diverse; this makes accurate diagnosis difficult^[1-3]. The synchronous involvement of two endocrine organs is rare in NHL. Until now, only four cases of NHL with bilateral adrenal and sellar involvement have been reported, and all the patients presented with pituitary involvement. Here, we describe a case of a middle-aged male patient with bilateral adrenal masses, who was finally diagnosed with diffuse large B cell lymphoma (DLBCL) with bilateral adrenal gland and hypothalamic involvement. We also discuss the diagnostic and treatment approaches available when a patient with NHL presents with multiple endocrine organ involvement. This report can help physicians avoid misdiagnosis of this disease.

CASE PRESENTATION

Chief complaints

The patient was a 52-year-old man who complained of intermittent fever, sweating, thirst, polyuria, anorexia, abdominal distension and dizziness for 20 d. Three days before he presented to us, and impaired liver function and bilateral adrenal masses were found in a local hospital.

History of present illness

His symptoms persisted for 20 d prior to his arrival at the local hospital. He subsequently underwent extensive examinations which indicated a low blood pressure of 90/60 mmHg. His blood biochemical tests demonstrated elevated aminotransferase levels, and the abdominal ultrasound revealed hypoechoic bilateral adrenal gland masses. Symptomatic treatment resulted in no relief.

History of past illness

The patient was diagnosed with hypertension a year ago, with the highest blood pressure of 135/105 mmHg, and he had never been treated systematically. Family history of the patient was negative.

Physical examination

On admission, he was hypovolemic, with a blood pressure of 88/68 mmHg, a pulse rate of 122 beats/min and a temperature of 37.6°C. No superficial lymphadenopathy was noted. Although physical hypothermia was effective, intermittent fever persisted. After admission for a week, he developed rashes on his chest, back, and abdomen.

Laboratory examinations

On admission, his blood biochemical tests were indicative of impaired liver function, with significant elevation of alanine aminotransferase, aspartate aminotransferase, glutamyl transferase, total bilirubin, direct bilirubin, and alkaline phosphatase levels. Routine blood tests showed a significantly decreased platelet count and slightly elevated red and white blood cell counts. The coagulation function test showed a marked elevation in plasma fibrinogen and D-dimer levels. Moreover, serum lactate dehydrogenase (LDH) and β 2-microglobulin were elevated significantly. The results are shown in [Table 1](#).

We also evaluated the function of the pituitary-target gland axes. The plasma adrenocorticotrophic hormone (ACTH) and cortisol values at 0 AM, 8 AM, and 4 PM, are shown in [Table 2](#). Despite the cortisol level decline, the ACTH levels failed to increase via a feedback mechanism. In addition, the diurnal rhythm of cortisol and ACTH were disturbed. The results of the thyroid and gonadal function tests are shown in [Table 3](#). The serum total thyroxine, free thyroxine, free triiodothyronine, and thyroid stimulating hormone values, were all lower than normal ranges. Hormones in the pituitary-gonadal axis, including testosterone, luteinizing hormone, and follicle stimulating hormone, were also markedly lower. The 24-h urinary catecholamine and vanillylmandelic acid levels were within the normal range.

Imaging examinations

Computed tomography (CT) of the urinary system showed bilateral adrenal gland space occupying lesions with retroperitoneal lymphadenectases. Magnetic resonance imaging (MRI) of the pituitary gland revealed a space occupying lesion in the hypothalamus with an enlarged pituitary stalk. ¹⁸Fluorine-fluorodeoxyglucose positron emission tomography/CT (PET/CT) images showed lesions with high metabolism in both adrenal glands, the sellar area, left supraclavicular lymph nodes, retroperitoneal lymph nodes, left tonsil, and the left testis ([Figure 1](#)). Metaiodobenzylguanidine (MIBG) scintigraphy showed normal bilateral adrenal glands uptake.

Further diagnostic work-up

A biopsy of the left supraclavicular lymph nodes was carried out subsequently and the result showed lymphoid hyperplasia. Immunohistochemistry demonstrated lesion positivity for Bcl-2, Bcl-6, CD 20, PAX-5 and MUM-1, and negativity for CD10 ([Figure 2](#)); the levels of C-myc and Ki-67 were 70% and 80%, respectively.

According to the results of pituitary-target gland hormone measurement, the patient was diagnosed with anterior pituitary hypofunction. After hydrocortisone replacement therapy, posterior pituitary hypofunction appeared.

MULTIDISCIPLINARY EXPERT CONSULTATION

Jing-Tao Dou, MD, PhD, Professor and Chief, Department of Endocrinology, Chinese PLA General Hospital

The patient developed hypernatremia after hydrocortisone treatment for two possible reasons: first, a deficiency of antidiuretic hormone was prominent, leading to polyuria with a relative high blood sodium concentration; second, hydrocortisone played a partial role of a mineralocorticoid; therefore we decided to replace hydrocortisone by prednisone.

Guo-Qing Yang, MD, PhD, Professor and Chief, Department of Endocrinology, Chinese PLA General Hospital

The patient developed acute-onset impaired liver function, a fever, a rash, and according to the biopsy and PET/CT results, bilateral adrenal and sellar occupying lesions were more likely to be NHL, causing panhypopituitarism. Therefore, the patient was treated in the endocrinology department with hormone replacement therapy for panhypopituitarism.

Quan-Shun Wang, MD, PhD, Professor and Chief, Department of Hematology, Chinese PLA General Hospital

Table 1 Results of laboratory test on admission

	Values	Reference range
Alanine aminotransferase (U/L)	232.8	0-40
Aspartate aminotransferase (U/L)	99.3	0-40
Glutamyl transferase (U/L)	1194.9	0-50
Alkaline phosphatase (U/L)	254.8	0-130
Total bilirubin (μmol/L)	28.6	0-21
Direct bilirubin (μmol/L)	14.2	0-8.6
Platelet (10 ⁹ /L)	48	100-300
Red blood cell (10 ¹² /L)	5.98	4.3-5.9
White blood cell (10 ⁹ /L)	11.4	3.5-10
Fibrinogen (g/L)	7.22	2.0-4.0
D-dimer (μg/mL)	0.92	0-0.5
Lactate dehydrogenase (U/L)	290.9	40-250
β2-microglobulin (mg/dL)	0.377	0.07-0.18

The diagnosis of NHL in this patient was clear, and therefore chemotherapy should be administered as soon as possible. In addition, in view of the multiple organs involved, an intrathecal injection was administered to prevent central neurological symptoms. Due to the multiple organ involvement of the tumor and poor prognosis according to the results of immunohistochemistry, an autologous stem cell transplantation was recommended.

FINAL DIAGNOSIS

The patient was finally diagnosed with DLBCL, Ann-Arbor stage IVB, a type of non-germinal center B-cell tumor, involving the bilateral adrenal glands, hypothalamus, left supraclavicular lymph nodes, retroperitoneal lymph nodes, left tonsil, and left testis. With hypothalamic and bilateral adrenal involvement, the condition also led to panhypopituitarism.

TREATMENT

The patient was treated with the R-CHOP immunochemotherapy regimen (rituximab: 0.7 g on day 0, and cyclophosphamide: 1.3 g, doxorubicin: 60 mg, and vincristine: 4 mg on day 1, and methylprednisolone: 80 mg on days 1-5). He also received intrathecal dexamethasone and cytarabine at doses of 5 mg and 50 mg, respectively. A total of 6 courses of chemotherapy were delivered, and the interval between each course was 1 mo. After the 6 courses of chemotherapy, autologous stem cell transplantation was carried out.

For panhypopituitarism, the patient was prescribed desmopressin acetate, and hydrocortisone was replaced with prednisone acetate at a dose of 0.05 mg and 5 mg, twice a day, respectively.

OUTCOME AND FOLLOW-UP

A time line of this case is shown in Table 4. After immunochemotherapy, the patient recovered from his intermittent fever, the transaminase levels decreased significantly, and the platelet count returned to a normal range. After 4 courses of chemotherapy, PET/CT indicated that the lesions disappeared including the hypothalamus and adrenal gland lesions (Figure 1). After replacement therapy with prednisone acetate and desmopressin acetate twice a day at a dose of 5 mg and 0.05 mg, respectively, the serum sodium level declined to a normal range, and the symptoms relieved.

We evaluated the risk for central nervous system (CNS) relapse by calculating the CNS-International Prognostic Index (CNS-IPI) score, which was 4. Therefore, the patient had a high risk for CNS relapse. We then recommended a pituitary MRI every year and endocrine hormone measurement every 3 mo.

Table 2 Results of pituitary-adrenal function test

	0 AM	8 AM	4 PM
Cortisol (nmol/L)	109.9	116.17	98.05
ACTH (pmol/L)	8.88	4.31	8.15

ACTH: Adrenocorticotrophic hormone.

DISCUSSION

Pheochromocytomas, lymphomas, and metastatic carcinomas are all common types of adrenal space occupying lesions^[4-6]. In this case, the presence of pheochromocytoma and metastatic carcinoma were excluded by MIBG scintigraphy, CT scans, and laboratory examination. Lymphoma is the most common malignant cause of fevers of unknown origin^[7]. The patient had intermittent fever for 20 d; infection and autoimmune diseases could therefore be excluded. A rash developed at a later stage and the results of the laboratory examination showed abnormal elevations in serum LDH, serum β 2-microglobulin, and transaminases. All these symptoms and findings suggested a diagnosis of lymphoma, which was finally confirmed by biopsy and PET/CT. PET/CT also showed that the standardized uptake values (SUV) in bilateral adrenal gland and the hypothalamus were higher than those of the background; they were as high as those of the left supraclavicular lymph nodes. The findings indicated that DLBCL had bilateral adrenal gland and hypothalamic involvement in this case.

The diagnosis of panhypopituitarism was complicated. Since hormones levels of pituitary-target gland were all lower than the normal ranges, the patient was diagnosed with anterior pituitary hypofunction. He was accordingly received hydrocortisone replacement therapy. However, after treatment, the urine osmotic pressure and specific gravity declined to 151 mOsm/L and 1.005, respectively, while the serum sodium and chloride levels increased to 155.4 mmol/L and 117.3 mmol/L, respectively. In view of the hypovolemia, polyuria, and thirst on admission, his posterior pituitary function was also considered to be impaired, and he was diagnosed with panhypopituitarism.

Synchronous bilateral adrenal gland and hypothalamic-pituitary axis involvement has never been reported in patients with NHL. Literature review reveals 4 similar cases of NHL with bilateral adrenal gland and pituitary involvement. Two patients, 1 Chinese and 1 Japanese, presented with adrenal insufficiency and panhypopituitarism^[8,9]. A Chinese patient presented with adrenal insufficiency and only anterior pituitary hypofunction^[10]. A British patient presented with adrenal insufficiency and mild diabetes insipidus^[11].

The most common pathological type of bilateral adrenal lymphoma is DLBCL, which causes adrenal insufficiency to varying degrees^[12-15]. However, this case was extraordinary in that the ACTH level was lowered instead of being raised due to the hypothalamic involvement. In previous literature, only a few patients with lymphoma presented with panhypopituitarism secondary to hypothalamic involvement^[16]. Previous reports noted that DLBCL was the most common type of NHL involving the hypothalamic-pituitary axis^[17,18]. In addition, cases of NHL with pituitary involvement often presented with variable clinical manifestations including anterior pituitary hypofunction, posterior pituitary hypofunction, visual disturbances, and acromegaly^[19-24], and few cases presented with hyperprolactinemia^[25,26]. In the current case, prolactin level also increased slightly in addition to developing panhypopituitarism. A study suggested that as the pituitary gland has a considerable reserve capacity, most cases of NHL with hypothalamus and pituitary involvement usually present with posterior pituitary hypofunction, and only a few patients present with anterior pituitary hypofunction^[27]. A few previous reports have also shown that chemotherapy followed by autologous stem cell transplantation has a substantial effect on hypothalamic-pituitary lymphoma, which led to sustained remission and restoration of hormone levels, but the mechanism remains unclear^[28,29]. However, this restoration of endocrine hormones has not been seen in this patient. Therefore, continued evaluation of endocrine hormones should be conducted during follow-up period.

CNS-IPI is an index used to evaluate the risk for CNS relapse in patients with DLBCL treated with R-CHOP. The index consists of 5 risk factors (age > 60; elevated LDH; Eastern Cooperative Oncology Group status > 1; stage III/IV; extranodal site > 1) with additional kidney or adrenal involvement. The CNS-IPI score divides patients with DLBCL into 3 groups, low risk (0-1 factor), intermediate risk (2-3 factors) and

Table 3 Results of pituitary-thyroid function test and pituitary-gonadal function test

	Values	Reference range
Pituitary-thyroid axis function		
Total thyroxine (nmol/L)	41.1	55.34-160.88
Triiodothyronine (nmol/L)	1.20	1.01-2.95
Free triiodothyronine (pmol/L)	2.59	2.76-6.3
Free thyroxine (pmol/L)	8.41	10.42-24.32
Thyroid stimulating hormone (mU/L)	0.17	0.35-5.5
Pituitary-gonadal axis function		
Testosterone (nmol/L)	0.75	14-25.4
Luteinizing hormone (IU/L)	< 0.07	1.5-9.3
Follicle stimulating hormone (IU/L)	0.52	1.4-18.1
Prolactin (nmol/L)	19.12	2.1-17.7

high risk (4-5 factors) with a 2-year risk for CNS relapse of 0.6%, 3.4% and 10.2%, respectively^[30]. The CNS-IPi score in this case was 4, which represents a high risk of CNS relapse. Therefore, prophylactic interventions are recommended to prevent CNS relapse. In addition, endocrine hormones measurement and pituitary MRI should be conducted regularly to identify CNS relapse.

The presented patient was diagnosed with DLBCL based on the left supraclavicular lymph nodes biopsy. Significantly increased SUVs were also noted in the left supraclavicular lymph nodes, bilateral adrenal area, sellar area, retroperitoneal lymph nodes, left tonsil, and left testis. Our experience with this case suggests that biopsy and PET/CT are effective for the diagnosis of NHL with multiple organ involvement^[31].

CONCLUSION

To the best of our knowledge, this is the first case of DLBCL with bilateral adrenal hypothalamic involvement. When NHL involves endocrine organs, patients are predisposed to hypofunction of endocrine organs. Therefore, hormone replacement therapy is necessary. The case demonstrates the necessity of biopsies in combination with PET/CT in the diagnosis of NHL with involvement of extralymphatic organs.

Table 4 Time line		
Data		
2017-08-03		Admitted with bilateral adrenal occupying lesions and fever
2017-08-04		Laboratory examinations: Impaired liver function, decreased platelet count, and elevated LDH and β 2-MG
2017-08-07		Decreased cortisol and ACTH
2017-08-09		Decreased TSH, FT3, FT4, LH, FSH, and testosterone
2017-08-10		MRI: A hypothalamic space occupying lesion; physical examination: rash and enlarged left supraclavicular lymph nodes; diagnosed with anterior pituitary hypofunction; treated with hydrocortisone
2017-08-11		Fever disappeared
2017-08-14		Low specific gravity urine and hypernatremia; diagnosed with panhypopituitarism; treated with desmopressin acetate and prednisone acetate
2017-08-15		Symptoms of polyuria and thirst were relieved; Biopsy: DLBCL
2017-08-17		PET/CT: high metabolism in bilateral adrenal glands, the sellar area, left supraclavicular lymph nodes, retroperitoneal lymph nodes, left tonsil, and left testis
2017-08-22		Started R-CHOP immunochemotherapy
2017-12-15		PET/CT: All lesions disappeared
2018-05-17		Treated with autologous stem cell transplantation

LDH; Lactate dehydrogenase; ACTH: Adrenocorticotrophic hormone; DLBCL: Diffuse large B cell lymphoma; PET/CT: Positron emission tomography/computed tomography.

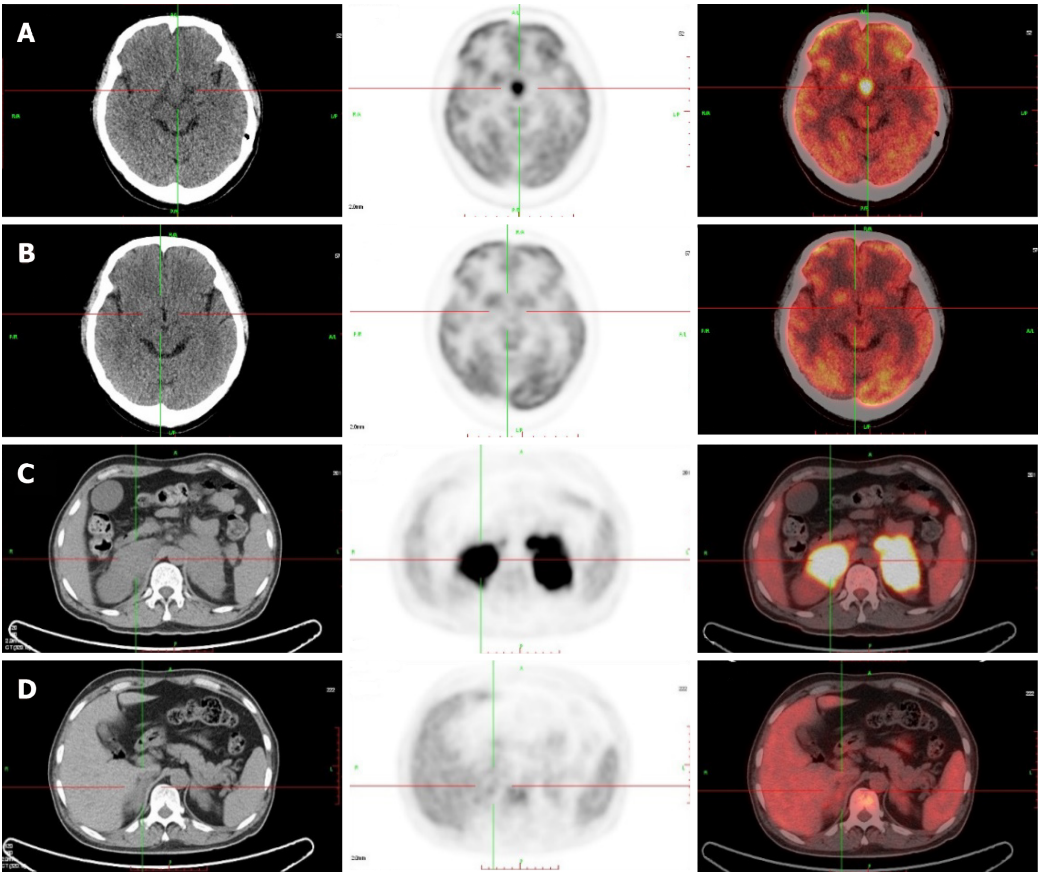


Figure 1 Images of positron emission tomography/computed tomography scan. Before treatment, glucose hypermetabolic focus existed in hypothalamus (A) and bilateral adrenal glands (C). After chemotherapy, glucose hypermetabolic focus disappeared in hypothalamus (B) and bilateral adrenal glands (D).

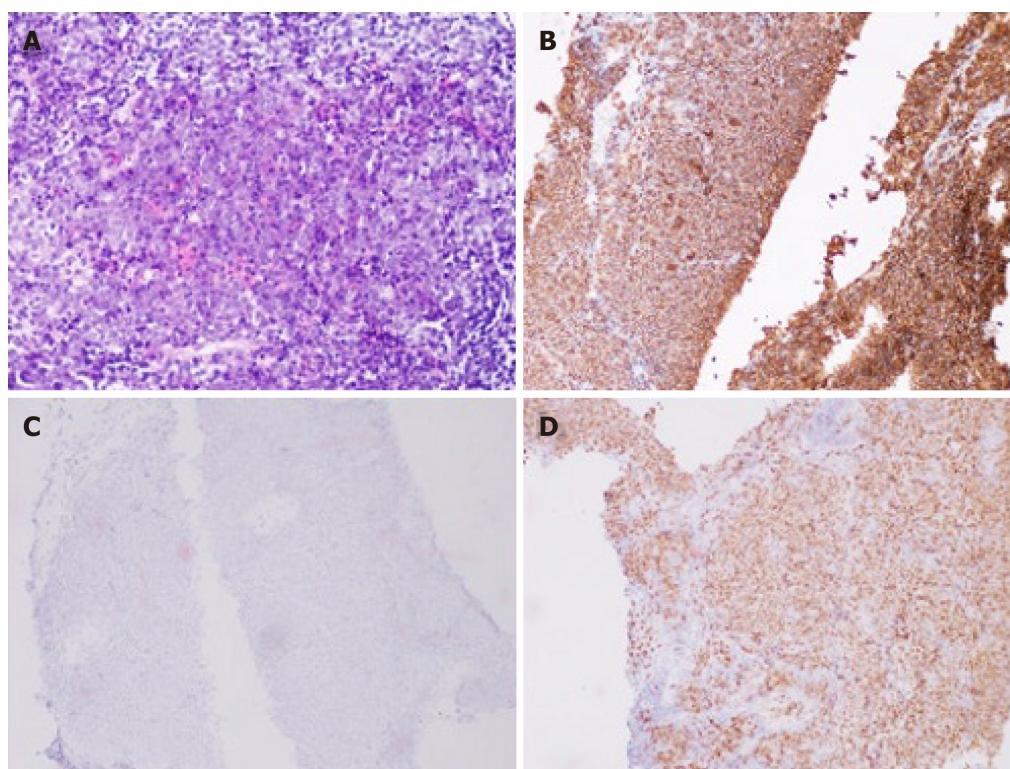


Figure 2 Results of the left supraclavicular lymph nodes biopsy. A: Lymphoid hyperplasia by hematoxylin-eosin staining; B: Positive expression of CD20, the marker of B-cell; C: Negative expression of CD10; D: Positive expression of MUM-1 indicated a non-germinal center B-cell tumor.

ACKNOWLEDGEMENTS

The authors thank all of the treatment groups of the Chinese People's Liberation Army General Hospital.

REFERENCES

- 1 **Kumabe A**, Kenzaka T, Nishimura Y, Aikawa M, Mori M, Matsumura M. A rare case of anasarca caused by infiltration of the pituitary gland by diffuse large B-cell lymphoma. *BMC Endocr Disord* 2015; **15**: 10 [PMID: 25887623 DOI: 10.1186/s12902-015-0007-4]
- 2 **Ravindra VM**, Raheja A, Corn H, Driscoll M, Welt C, Simmons DL, Couldwell WT. Primary pituitary diffuse large B-cell lymphoma with somatotroph hyperplasia and acromegaly: case report. *J Neurosurg* 2017; **126**: 1725-1730 [PMID: 27518527 DOI: 10.3171/2016.5.JNS16828]
- 3 **Yasuda M**, Akiyama N, Miyamoto S, Warabi M, Takahama Y, Kitamura M, Yakushiji F, Kinoshita H. Primary sellar lymphoma: intravascular large B-cell lymphoma diagnosed as a double cancer and improved with chemotherapy, and literature review of primary parasellar lymphoma. *Pituitary* 2010; **13**: 39-47 [PMID: 19707877 DOI: 10.1007/s11102-009-0196-9]
- 4 **Kopf D**, Goretzki PE, Lehnert H. Clinical management of malignant adrenal tumors. *J Cancer Res Clin Oncol* 2001; **127**: 143-155 [PMID: 11260859]
- 5 **Nieman LK**. Approach to the patient with an adrenal incidentaloma. *J Clin Endocrinol Metab* 2010; **95**: 4106-4113 [PMID: 20823463 DOI: 10.1210/jc.2010-0457]
- 6 **Young WF**. Clinical practice. The incidentally discovered adrenal mass. *N Engl J Med* 2007; **356**: 601-610 [PMID: 17287480 DOI: 10.1056/NEJMc065470]
- 7 **Landman RE**, Wardlaw SL, McConnell RJ, Khandji AG, Bruce JN, Freda PU. Pituitary lymphoma presenting as fever of unknown origin. *J Clin Endocrinol Metab* 2001; **86**: 1470-1476 [PMID: 11297569 DOI: 10.1210/jcem.86.4.7389]
- 8 **Li JK**, Chow CC, Yeung VT, Ko GT, Cockram CS. Adrenal and hypophyseal non-Hodgkin's lymphoma presenting with panhypopituitarism. *Int J Clin Pract* 1998; **52**: 513-514 [PMID: 10622097]
- 9 **Nakashima Y**, Shiratsuchi M, Abe I, Matsuda Y, Miyata N, Ohno H, Ikeda M, Matsushima T, Nomura M, Takayanagi R. Pituitary and adrenal involvement in diffuse large B-cell lymphoma, with recovery of their function after chemotherapy. *BMC Endocr Disord* 2013; **13**: 45 [PMID: 24106823 DOI: 10.1186/1472-6823-13-45]
- 10 **Wang XL**, Lü ZH, Mu YM, Dou JT, Lu JM, Zhong WW, Pan CY. Diffuse large cell non-Hodgkin lymphoma with pituitary and bilateral adrenal involvement. *Intern Med J* 2012; **42**: 329-332 [PMID: 22432986 DOI: 10.1111/j.1445-5994.2011.02691.x]
- 11 **Megan Ogilvie C**, Payne S, Evanson J, Lister TA, Grossman AB. Lymphoma metastasizing to the pituitary: an unusual presentation of a treatable disease. *Pituitary* 2005; **8**: 139-146 [PMID: 16379034 DOI: 10.1007/s11102-005-4535-1]

- 12 **Horiguchi K**, Hashimoto K, Hashizume M, Masuo T, Suto M, Okajo J, Handa H, Kaneko Y, Yokoo H, Sasaki A, Okada S, Yamada M, Tsukamoto N, Nojima Y, Nakazato Y, Mori M. Primary bilateral adrenal diffuse large B-cell lymphoma demonstrating adrenal failure. *Intern Med* 2010; **49**: 2241-2246 [PMID: 20962443 DOI: 10.2169/internalmedicine.49.3941]
- 13 **Mozos A**, Ye H, Chuang WY, Chu JS, Huang WT, Chen HK, Hsu YH, Bacon CM, Du MQ, Campo E, Chuang SS. Most primary adrenal lymphomas are diffuse large B-cell lymphomas with non-germinal center B-cell phenotype, BCL6 gene rearrangement and poor prognosis. *Mod Pathol* 2009; **22**: 1210-1217 [PMID: 19525926 DOI: 10.1038/modpathol.2009.87]
- 14 **Ozimek A**, Diebold J, Linke R, Heyn J, Hallfeldt K, Mussack T. Bilateral primary adrenal non-Hodgkin's lymphoma and primary adrenocortical carcinoma--review of the literature preoperative differentiation of adrenal tumors. *Endocr J* 2008; **55**: 625-638 [PMID: 18490838]
- 15 **Rashidi A**, Fisher SI. Primary adrenal lymphoma: a systematic review. *Ann Hematol* 2013; **92**: 1583-1593 [PMID: 23771429 DOI: 10.1007/s00277-013-1812-3]
- 16 **Chan TW**, Hoskins P. Panhypopituitarism secondary to hypothalamic involvement in a woman with diffuse large B-cell lymphoma. *J Clin Oncol* 2010; **28**: e165-e166 [PMID: 20065184 DOI: 10.1200/JCO.2009.24.9060]
- 17 **Giustina A**, Gola M, Doga M, Rosei EA. Clinical review 136: Primary lymphoma of the pituitary: an emerging clinical entity. *J Clin Endocrinol Metab* 2001; **86**: 4567-4575 [PMID: 11600505 DOI: 10.1210/jcem.86.10.7909]
- 18 **Moshkin O**, Muller P, Scheithauer BW, Juco J, Horvath E, Patterson BJ, Kamel-Reid S, Kovacs K. Primary pituitary lymphoma: a histological, immunohistochemical, and ultrastructural study with literature review. *Endocr Pathol* 2009; **20**: 46-49 [PMID: 19229666 DOI: 10.1007/s12022-009-9062-6]
- 19 **Büchler T**, Ferra C, Virgili N, Montanya E, Grañena A. A relapsed non-Hodgkin lymphoma presenting as panhypopituitarism successfully treated by chemotherapy. *J Neurooncol* 2002; **59**: 35-38 [PMID: 12222836]
- 20 **Komninos J**, Vlassopoulou V, Protopapa D, Korfias S, Kontogeorgos G, Sakas DE, Thalassinou NC. Tumors metastatic to the pituitary gland: case report and literature review. *J Clin Endocrinol Metab* 2004; **89**: 574-580 [PMID: 14764764 DOI: 10.1210/jc.2003-030395]
- 21 **Liozon E**, Soria P, Jaccard A, Boncoeur MP, Touati M, Nadalon S, Loustaud-Ratti V, Vidal E. [Diabetes insipidus revealing primary malignant non-Hodgkin's lymphoma of bone]. *Rev Med Interne* 1998; **19**: 830-834 [PMID: 9864783]
- 22 **Merlo EM**, Maiolo A, Brocchieri A, Tua A, Grignani G. Hypophyseal non-Hodgkin's lymphoma presenting with diabetes insipidus: a case report. *J Neurooncol* 1999; **42**: 69-72 [PMID: 10360480]
- 23 **Scheinflug K**, Schalk E, Reschke K, Franke A, Mohren M. Diabetes insipidus due to herpes encephalitis in a patient with diffuse large cell lymphoma. A case report. *Exp Clin Endocrinol Diabetes* 2006; **114**: 31-34 [PMID: 16450314 DOI: 10.1055/s-2005-873014]
- 24 **Yang J**, Zhao N, Zhang G, Zheng W. Clinical features of patients with non-Hodgkin's lymphoma metastasizing to the pituitary glands. *Oncol Lett* 2013; **5**: 1643-1648 [PMID: 23760877 DOI: 10.3892/ol.2013.1266]
- 25 **Bolanowski M**, Kuliszkievicz-Janus M, Sokolska V. Diffuse malignant lymphoma type B with optic chiasm infiltration, visual disturbances, hypopituitarism, hyperprolactinaemia and diabetes insipidus. Case report and literature review. *Endokrynol Pol* 2006; **57**: 642-647 [PMID: 17253438]
- 26 **Sumrall A**, Herrin V. Recurrent, transformed non-Hodgkin's lymphoma presenting as chiasmal syndrome with hyperprolactinemia and hypopituitarism. *J Miss State Med Assoc* 2010; **51**: 35-36 [PMID: 20827870]
- 27 **Valeros KA**, Khoo E. Anterior panhypopituitarism in diffuse large B-cell stage IV lymphoma. *J Clin Neurosci* 2014; **21**: 1464-1466 [PMID: 24746111 DOI: 10.1016/j.jocn.2013.10.042]
- 28 **Kenchiah M**, Hyer SL. Diffuse large B-cell non Hodgkin's lymphoma in a 65-year-old woman presenting with hypopituitarism and recovering after chemotherapy: a case report. *J Med Case Rep* 2011; **5**: 498 [PMID: 21970824 DOI: 10.1186/1752-1947-5-498]
- 29 **Pekic S**, Milicevic S, Colovic N, Colovic M, Popovic V. Intravascular large B-cell lymphoma as a cause of hypopituitarism: gradual and late reversal of hypopituitarism after long-term remission of lymphoma with immunochemotherapy. *Endocrine* 2008; **34**: 11-16 [PMID: 18937075 DOI: 10.1007/s12020-008-9109-3]
- 30 **Schmitz N**, Zeynalova S, Nickelsen M, Kansara R, Villa D, Sehn LH, Glass B, Scott DW, Gascoyne RD, Connors JM, Ziepert M, Pfreundschuh M, Loeffler M, Savage KJ. CNS International Prognostic Index: A Risk Model for CNS Relapse in Patients With Diffuse Large B-Cell Lymphoma Treated With R-CHOP. *J Clin Oncol* 2016; **34**: 3150-3156 [PMID: 27382100 DOI: 10.1200/JCO.2015.65.6520]
- 31 **Toogood V**, Milliken S, Morey A, Samaras K. Adrenal tumours: how to establish malignancy. *BMJ Case Rep* 2014; **2014**: bcr2014203736 [PMID: 25538211 DOI: 10.1136/bcr-2014-203736]



Published By Baishideng Publishing Group Inc
7041 Koll Center Parkway, Suite 160, Pleasanton, CA 94566, USA
Telephone: +1-925-2238242
E-mail: bpgoffice@wjgnet.com
Help Desk: <https://www.f6publishing.com/helpdesk>
<https://www.wjgnet.com>

