

World Journal of *Meta-Analysis*

World J Meta-Anal 2020 February 28; 8(1): 1-40





EDITORIAL

- 1 Is there still a role for sucralfate in the treatment of gastritis?
Bramhall SR, Mourad MM

SYSTEMATIC REVIEWS

- 4 L-carnitine supplementation in non-alcoholic fatty liver disease: A systematic review and meta-analysis
Thiagarajan P, Chalmers J, Ban L, Grindlay D, Aithal GP

META-ANALYSIS

- 15 Gender prevalence of cardiovascular diseases in the geriatric population of India: A meta-analysis using R
Nanda H, Shivgotra VK
- 27 Long-term efficacy of capecitabine plus oxaliplatin chemotherapy on stage III colon cancer: A meta-analysis
Fu HT, Xu YY, Tian JJ, Fu JX, Nie SL, Tang YY, Chen P, Zong L

ABOUT COVER

Editorial Board Member of *World Journal of Meta-Analysis*, Peter N Lee, MA, MSc, Statistician, Statistics, P.N. Lee Statistics and Computing Ltd., Sutton SM2 5DA, United Kingdom

AIMS AND SCOPE

The primary aim of *World Journal of Meta-Analysis* (WJMA, *World J Meta-Anal*) is to provide scholars and readers from various fields of clinical medicine with a platform to publish high-quality meta-analysis and systematic review articles and communicate their research findings online. WJMA mainly publishes articles reporting research results and findings obtained through meta-analysis and systematic review in a wide range of areas, including medicine, pharmacy, preventive medicine, stomatology, nursing, medical imaging, and laboratory medicine.

INDEXING/ABSTRACTING

The WJMA is now abstracted and indexed in China National Knowledge Infrastructure (CNKI), China Science and Technology Journal Database (CSTJ), and Superstar Journals Database

RESPONSIBLE EDITORS FOR THIS ISSUE

Responsible Electronic Editor: *Li-Li Qi*

Proofing Production Department Director: *Yun-Xiaojuan Wu*

NAME OF JOURNAL

World Journal of Meta-Analysis

ISSN

ISSN 2308-3840 (online)

LAUNCH DATE

May 26, 2013

FREQUENCY

Irregular

EDITORS-IN-CHIEF

Waiting for recruitment

EDITORIAL BOARD MEMBERS

<https://www.wjnet.com/2308-3840/editorialboard.htm>

EDITORIAL OFFICE

Jin-Lei Wang, Director

PUBLICATION DATE

February 28, 2020

COPYRIGHT

© 2020 Baishideng Publishing Group Inc

INSTRUCTIONS TO AUTHORS

<https://www.wjnet.com/bpg/gerinfo/204>

GUIDELINES FOR ETHICS DOCUMENTS

<https://www.wjnet.com/bpg/GerInfo/287>

GUIDELINES FOR NON-NATIVE SPEAKERS OF ENGLISH

<https://www.wjnet.com/bpg/gerinfo/240>

PUBLICATION MISCONDUCT

<https://www.wjnet.com/bpg/gerinfo/208>

ARTICLE PROCESSING CHARGE

<https://www.wjnet.com/bpg/gerinfo/242>

STEPS FOR SUBMITTING MANUSCRIPTS

<https://www.wjnet.com/bpg/GerInfo/239>

ONLINE SUBMISSION

<https://www.f6publishing.com>

Gender prevalence of cardiovascular diseases in the geriatric population of India: A meta-analysis using R

Himani Nanda, Vijay Kumar Shivgotra

ORCID number: Himani Nanda (0000-0001-5084-2212); Vijay Kumar Shivgotra (0000-0003-2554-5587).

Author contributions: Nanda H and Shivgotra VK both designed the study, the literature was reviewed by the first author, then by the second author; data collection, data analysis and writing of the paper was performed by Nanda H under the supervision of Shivgotra VK.

Conflict-of-interest statement: The authors declare that they have no conflicts of interest.

PRISMA 2009 Checklist statement: The authors prepared the research paper after reading the PRISMA checklist 2009.

Open-Access: This article is an open-access article that was selected by an in-house editor and fully peer-reviewed by external reviewers. It is distributed in accordance with the Creative Commons Attribution NonCommercial (CC BY-NC 4.0) license, which permits others to distribute, remix, adapt, build upon this work non-commercially, and license their derivative works on different terms, provided the original work is properly cited and the use is non-commercial. See: <http://creativecommons.org/licenses/by-nc/4.0/>

Manuscript source: Unsolicited manuscript

Received: September 3, 2019

Peer-review started: September 3, 2019

First decision: November 12, 2019

Himani Nanda, Vijay Kumar Shivgotra, Department of Statistics, University of Jammu, Jammu 180006, India

Corresponding author: Vijay Kumar Shivgotra, MSc, PhD, Assistant Professor, Department of Statistics, University of Jammu, Babasaheb BR Ambedkar Road Jammu, Jammu 180006, India. vijayshivgotra@yahoo.com

Abstract

BACKGROUND

Population ageing is an important challenge for developed as well as developing countries due to the downward trends in mortality rates. The elderly population is increasing worldwide. Cardiovascular diseases (CVDs) are one of the most common diseases in the geriatric population. These diseases involve the heart or blood vessels and include hypertension, rheumatic heart disease, heart failure, and heart attack. An estimated 17.7 million people in India will die from CVDs representing 31% of all global deaths.

AIM

To perform a systematic review and meta-analysis of the gender prevalence of CVDs in the geriatric population of India.

METHODS

In the present study, we searched databases such as Google Scholar, PubMed and MEDLINE from the year 2003 to 2019 to identify the prevalence of CVDs in the Indian geriatric population. A meta-analysis was conducted using the statistical software R version 3.4.3 and the random effect model was used to determine the pooled estimate of the prevalence of CVDs in the geriatric population of India along with the 95% confidence interval rather than using the fixed effect model. The random effect model takes into consideration the heterogeneity across the various studies.

RESULTS

The prevalence of CVDs in the Indian geriatric population was determined in 6586 male subjects from 32 studies and 8164 female subjects from 32 studies, respectively. The overall prevalence of CVDs in the Indian geriatric population was 36.6% (95%CI: 31.9%-41.3%). In addition, calculation of the various heterogeneity statistics (Cochran's $Q = 3836.85$, $I^2 = 98.6\%$, $P < 0.0001$) indicated heterogeneity in the prevalence of CVDs in the elderly Indian population in these studies. The prevalence of CVDs in elderly males was 38.0% (95%CI: 33.0%-43.0%) and the prevalence of CVDs in elderly females was 40.9% (95%CI: 35.5%-

Revised: November 21, 2019

Accepted: January 1, 2020

Article in press: January 1, 2020

Published online: February 28, 2020

P-Reviewer: Erkut B, Dai X,
Karatza AA, Kharlamov AN,
Rostagno C

S-Editor: Dou Y

L-Editor: Webster JR

E-Editor: Qi LL



46.2%).

CONCLUSION

The results indicate that the prevalence of CVDs in the female geriatric population was relatively higher than that in the male geriatric population. Policy makers must take immediate steps to prevent CVDs and improve geriatric health care services in India.

Key words: Ageing; Cardiovascular diseases; Geriatric; Systematic review; Meta-analysis; Prevalence

©The Author(s) 2020. Published by Baishideng Publishing Group Inc. All rights reserved.

Core tip: A systematic review and meta-analysis of the prevalence of cardiovascular diseases in the geriatric population in India from the year 2003 to 2019 revealed that there was a higher prevalence of cardiovascular diseases in the female geriatric population (40.9%) as compared with the male geriatric population (38.0%). In addition, the measures of consistency such as I^2 and Cochran's Q suggested heterogeneity between the studies. These findings indicate that health care professionals should take immediate steps to improve geriatric health care services in India.

Citation: Nanda H, Shivgotra VK. Gender prevalence of cardiovascular diseases in the geriatric population of India: A meta-analysis using R. *World J Meta-Anal* 2020; 8(1): 15-26

URL: <https://www.wjgnet.com/2308-3840/full/v8/i1/15.htm>

DOI: <https://dx.doi.org/10.13105/wjma.v8.i1.15>

INTRODUCTION

Ageing is a universal phenomenon associated with deteriorating health status. It is said that nobody grows old merely by living a certain number of years. With the passage of time, certain changes take place in an organism leading to morbidity, disability and even death. Populations around the world are growing old at a high rate with increasing life expectancy. The challenge for health care in the coming years is to ensure quality of life in the geriatric population^[1]. The elderly consist of people surpassing the average life span of humans. The contribution of the elderly population to demographic figures is increasing day by day. Increasing problems in health care, psychological, personal and socio-economic factors are associated with the elderly^[2]. The growing healthy ageing population is a source of both joy and worry. Joy as people are living longer and healthier lives, and worry about how to respond to a future with a larger older population and their demands and needs^[3].

According to the World Health Organization (WHO) Report on Ageing and Health 2018, persons aged 60 years and older are considered elderly. It is suggested that between 2015 and 2050, the proportion of the world's elderly population will nearly double from 12% to 22%, respectively. By 2050, the world's population aged 60 years and older is expected to total 2 billion, up from 900 million in 2015^[4]. According to the population census 2011, there are nearly 104 million elderly persons in India which constitutes approximately 8% of the total world population. This share of the population is expected to increase from 8% to nearly 12.6% in 2025 and to 19% in 2050^[5].

The geriatric population is vulnerable to long-term diseases such as cardiovascular diseases (CVDs), cancer, diabetes, musculoskeletal disorders, depression, arthritis, kidney problems, *etc.* Due to the increase in life expectancy and modification of lifestyle, CVDs are emerging as one of the major problems in elderly people in India. CVDs generally refer to disorders of the heart and blood vessels and include hypertension, heart attack, cerebrovascular diseases or stroke, peripheral heart disease, rheumatic heart disease, congenital heart disease and cardiomyopathies^[6]. The symptoms of heart diseases may vary with respect to disease type. Most CVDs can be prevented by addressing behavioral risk factors such as tobacco use, unhealthy diet and obesity, physical inactivity and harmful use of alcohol, *etc.* CVDs are a major cause of mortality all over the world as well as in India. According to the WHO Report, an estimated 17.9 million people will die every year from CVDs representing

31% of all deaths worldwide and over 23 million people will die from CVDs by 2030^[7]. Our study aims to provide a pooled estimate of the gender prevalence of CVDs in the geriatric population of India.

MATERIALS AND METHODS

Literature search

The search strategy, selection of publications and reporting of results for the review were conducted in accordance to the PRISMA guidelines. All published studies related to the prevalence of CVDs in India over the last 15 years (*i.e.*, from the year 2003 to year 2018) were obtained from MEDLINE/PubMed, Google Scholar and from non-electronic materials such as journals, theses, *etc.* Internet searches using a combination of keywords such as prevalence, CVDs, hypertension, stroke, elderly, morbidity, *etc.* were used to identify prevalence studies of CVDs in the Indian geriatric population. The limitations included were: English for the language category and geriatric humans for the study category.

Selection of studies

All identified research papers were independently reviewed by the reviewers. Disagreements between the reviewers were resolved by considering the facts mentioned in the PRISMA checklist.

Inclusion criteria

Studies that *met all* the following criteria were included in the present analysis: (1) The studies in the mentioned databases with full text, despite the language of the original text; (2) The studies were conducted in the Indian population and were prevalence studies conducted after the year 2002; (3) The study design was cross-sectional; and (4) The age group included in the study was 60 years and older.

Exclusion criteria

Studies which did not satisfy the above criteria were not included in our analysis. We also excluded studies in which age-specific prevalence was not reported. Some studies in which calculated proportions acted as outliers were also excluded from the study to ensure normal distribution of the data.

Data extraction and methodological assessment

Data extraction was performed by the first reviewer and confirmed by the second reviewer, and the whole process was discussed by both reviewers. The eligible studies were further reviewed and information on the author, year of publication, gender, location, total number of subjects, number of cases, type of study, *etc.* from each included study was extracted and the data were summarized in the form of a table.

Statistical analysis

The meta-analysis was used to combine the results of studies using the statistical software R version 3.4.3. The pooled estimate of prevalence of CVDs in the Indian geriatric population was provided by the random effect model. The random effect model assumes that observed estimates of treatment effect can vary across studies because of real differences in the treatment effect in each study as well as sampling variability (chance). Variation (heterogeneity) across studies must also be considered. The random effect meta-analysis allows for heterogeneity by assuming that underlying effects follow a normal distribution. Cochran's Q and I^2 were used to incorporate heterogeneity in the studies and 95% confidence intervals (CIs) are reported in the analysis. Forest plots and funnel plots were used for graphical representation of the meta-analysis. The squares in the forest plot represent the effect estimates of individual studies with their 95%CI of the prevalence of CVDs with the size of squares proportional to the weights assigned to each study in the meta-analysis. The diamond represents the overall result and 95%CI of the random effect meta-analysis. The funnel plots were used to investigate publication bias in the study. The inverted funnel shows that there is no publication bias, whereas the asymmetric funnel plot may suggest publication bias. The dots in the funnel plot represent the studies involved in the meta-analysis. Generally, the studies with larger power are placed towards the top, whereas the lower power studies are placed at the bottom.

RESULTS

Literature review

Figure 1 summarizes the search strategy carried out. Our search strategy identified approximately 720 articles. Of these, 390 duplicate articles were excluded. We also excluded 245 articles after screening the title and abstract. The full text of the remaining 85 articles was screened and 50 articles were further excluded due to lack of inclusion criteria and 35 articles were finally included in the study.

Study characteristics

We included 35 studies of CVDs in the Indian geriatric population in this meta-analysis. The included articles consisted of 32 studies based on male and female geriatric populations in India. **Table 1** shows the characteristics of each study in our analysis after applying the exclusion criteria.

Meta-analysis

Meta-analysis of the prevalence of CVDs in the Indian geriatric population involved 6586 male subjects from 32 studies. The pooled estimate of prevalence of CVDs in the male geriatric population using the random effect model was 38.0% (95%CI: 33.0%-43.0%) (**Table 2**). Significant heterogeneity ($I^2 = 95.0\%$ and Cochran's $Q = 621.09$, $P < 0.0001$) among the 32 studies was found (**Table 3**). The forest plot (**Figure 2**) and the funnel plot (**Figure 3**) represent the proportion of subjects affected by CVDs in each study and the pooled estimate of the prevalence of CVDs in the male geriatric population, respectively.

Meta-analysis of the prevalence of CVDs in the female geriatric population included 8164 subjects from 32 studies. The pooled estimate of prevalence of CVDs in the female geriatric population using the random effect model was 40.9% (95%CI: 35.5%-46.2%) (**Table 4**). Significant heterogeneity ($I^2 = 96.4\%$ and Cochran's $Q = 873.0$, $P < 0.0001$) among the 32 studies was found (**Table 5**). The forest plot (**Figure 4**) and funnel plot (**Figure 5**) represent the proportion of subjects affected due to CVDs in each study and the pooled estimate of prevalence of CVDs in the female geriatric population, respectively.

DISCUSSION

CVD in the geriatric population is emerging as a major problem in India. In the present analysis, we attempted to provide an estimate of the pooled prevalence of CVDs among the Indian geriatric population along with the 95%CI. The estimated overall prevalence of CVDs in the Indian geriatric population was 36.6% (95%CI: 31.9%-41.3%).

The estimated prevalence of CVDs in the male geriatric population was 38.0% (95%CI: 33.0%-43.0%) which was less than the prevalence (46.9%) reported by Naushad *et al*^[8] in Raipur, Chhattisgarh, India. The highest prevalence (64.2%) of CVDs in the male Indian geriatric population was observed by Hazarika *et al*^[9]. Similar findings were reported by Lena *et al*^[31] and Barman *et al*^[3] in their respective studies. Rapid urbanization, lifestyle changes, dietary changes and increased life expectancy were factors attributed to this rising trend. The lowest prevalence (10.2%) of CVDs in the male Indian geriatric population was observed by Bardhan *et al*^[10]. Chandrashekhar *et al*^[1] also reported similar findings in their study in which the prevalence of CVDs in the geriatric population was 19.3%.

The estimated overall prevalence of CVDs in the female geriatric Indian population was 40.9% (95%CI: 35.5%-46.2%) which is higher than the prevalence (35.7%) reported by Shubha *et al*^[11]. The highest prevalence (62.9%) of CVDs in the female Indian geriatric population was observed by Hazarika *et al*^[9] Bharati *et al*^[16], Joshi *et al*^[25], Naushad *et al*^[8] and Alam *et al*^[12] who reported a similar high prevalence of CVDs in female subjects. The lowest prevalence (9.6%) was observed by Bardhan *et al*^[10]. Studies by Banjare *et al*^[14] and Shubha *et al*^[11] also showed a similar pattern of low prevalence of CVDs in elderly female subjects.

The current statistics for CVDs show that almost 80% of premature heart attacks and strokes are preventable. The government should promote awareness of these diseases through mass media and other means and provide information on diet and physical health.

Conclusion

The present systematic review and meta-analysis demonstrated that the prevalence of CVDs in the male and female geriatric population in India was estimated to be 38.0% and 40.9%, respectively. These considerable prevalence rates require supportive

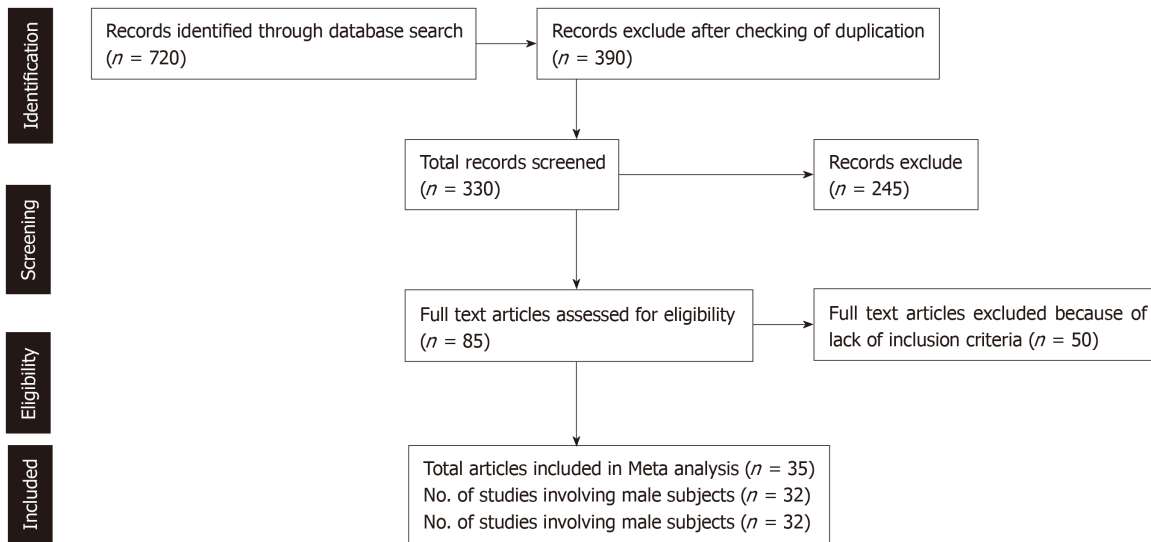


Figure 1 Flowchart showing the selection process of relevant studies.

interventions for the prevention and early diagnosis of CVDs in the geriatric population. It is imperative to provide geriatric health services at primary health centers in addition to increasing the awareness among elderly people of health, diseases and health care facilities in order to improve their quality of life.

Limitations

Given the limited amount of data available on the prevalence of CVDs in the geriatric population in India; studies conducted in subjects with different bio-social characteristics have been included in the meta-analysis. Also, the pooled estimate of prevalence of CVDs in the Indian geriatric population does not provide an overview of the problem of CVDs.

Implications for future research

The prevalence of CVDs in the Indian geriatric population presents a formidable challenge to the Indian health system. In future, researchers should identify the location- and age-specific pooled estimate of CVDs in the geriatric population of India. Other areas of research should include determination of the pooled prevalence of other morbidities such as diabetes, arthritis, *etc.* in the geriatric population.

Table 1 The characteristics of each study

Ref.	Study period	Study design	State	Sampling method	Age group	Sample size
Joshi <i>et al</i> ^[25]	2001	Cross-sectional	Haryana	Cluster sampling	≥ 60	200
Hazarika <i>et al</i> ^[9]	2002	Cross-sectional	Assam	Simple random sampling	≥ 60	888
Lena <i>et al</i> ^[31]	2003	Cross-sectional	Karnataka		≥ 60	213
Prakash <i>et al</i> ^[2]	2003	Cross-sectional	Rajasthan		≥ 60	300
Kishore <i>et al</i> ^[29]	2004	Cross-sectional	Uttarakhand		≥ 60	285
Khanam <i>et al</i> ^[28]	2004	Cross-sectional	Bangladesh	Simple random sampling	≥ 60	452
Bhatia <i>et al</i> ^[17]	2006	Cross-sectional	Haryana	Stratified random sampling	≥ 65	361
Chandrashekhara <i>et al</i> ^[11]	2008	Cross-sectional	Karnataka	Systematic random sampling	≥ 60	370
Bharati <i>et al</i> ^[16]	2008	Cross-sectional	Tamil Nadu	Simple random sampling	≥ 60	225
Bhatt <i>et al</i> ^[18]	2008	Cross-sectional	Gujarat	Simple random sampling	≥ 60	218
Jacob <i>et al</i> ^[23]	2010	Cross-sectional	Kerala	Cluster sampling	≥ 60	403
Sharma <i>et al</i> ^[36]	2010	Cross-sectional	Himachal Pradesh	Multistage simple random sampling	≥ 60	400
Ghosh <i>et al</i> ^[20]	2011	Cross-sectional	Bihar		≥ 60	431
Kamble <i>et al</i> ^[26]	2011	Cross-sectional	Maharashtra	Systematic random sampling	≥ 60	494
Qadri <i>et al</i> ^[33]	2011	Cross-sectional	Haryana	Simple random sampling	≥ 60	660
Banjare <i>et al</i> ^[14]	2012	Cross-sectional	Odisha	PPS, Systematic sampling	≥ 60	310
Dutta <i>et al</i> ^[19]	2012	Cross-sectional	Assam	Multistage sampling	≥ 60	370
Banjare <i>et al</i> ^[13]	2012	Cross-sectional	Odisha	Multistage simple random sampling	≥ 60	310
Barman <i>et al</i> ^[3]	2013	Cross-sectional	Bihar		≥ 60	160
Shubha <i>et al</i> ^[11]	2013	Cross-sectional	Karnataka	Simple random sampling	≥ 60	180
Karanth <i>et al</i> ^[27]	2013	Cross-sectional	Karnataka		≥ 60	500
Alam <i>et al</i> ^[12]	2014	Cross-sectional	Chhattisgarh	Multistage simple random sampling	≥ 60	640
Bardhan <i>et al</i> ^[10]	2014	Cross-sectional	Uttar Pradesh	Simple random sampling	≥ 60	980
Bartwal <i>et al</i> ^[15]	2014	Cross-sectional	Uttarakhand	Systematic sampling	≥ 60	440
Gupta <i>et al</i> ^[21]	2014	Cross-sectional	Punjab		≥ 60	534
Kumar <i>et al</i> ^[30]	2014	Cross-sectional	Uttar Pradesh	Stratified random sampling	≥ 60	402
Naushad <i>et al</i> ^[8]	2014	Cross-sectional	Chhattisgarh	Multistage simple random sampling	≥ 60	640
Jain <i>et al</i> ^[24]	2014	Cross-sectional	Maharashtra	PPS	≥ 60	600
Noor <i>et al</i> ^[32]	2014	Cross-sectional	Odisha	Simple random sampling	≥ 60	224
Venkateshkrishna <i>et al</i> ^[37]	2015	Cross-sectional	Karnataka		≥ 60	1452
Sahu <i>et al</i> ^[35]	2017	Cross-sectional	Uttar Pradesh		≥ 60	231
Reddy <i>et al</i> ^[34]	2017	Cross-sectional	Telangana	Systematic random sampling	≥ 60	1265
Gupta <i>et al</i> ^[22]	2018	Cross-sectional	Haryana	Simple random sampling	≥ 60	300

Table 2 Prevalence of cardiovascular diseases in the male Indian geriatric population

Ref.	n	Cases	Proportion	95%CI	W (Random) (%)
Joshi <i>et al</i> ^[25]	98	41	0.4184	[0.3195-0.5223]	3.0
Hazarika <i>et al</i> ^[9]	500	321	0.6420	[0.5982-0.6841]	3.3
Prakash <i>et al</i> ^[2]	190	84	0.4421	[0.3703-0.5158]	3.2
Kishore <i>et al</i> ^[29]	177	70	0.3955	[0.3229-0.4716]	3.1
Bhatia <i>et al</i> ^[17]	152	53	0.3487	[0.2733-0.4301]	3.1
Chandrashekhar <i>et al</i> ^[11]	181	35	0.1934	[0.1385-0.2585]	3.2
Lena <i>et al</i> ^[31]	92	53	0.5761	[0.4686-0.6785]	3.0
Bhatt <i>et al</i> ^[18]	74	19	0.2568	[0.1622-0.3716]	3.0
Bharati <i>et al</i> ^[16]	92	34	0.3696	[0.2712-0.4766]	3.0
Khanam <i>et al</i> ^[28]	204	74	0.3627	[0.2968-0.4328]	3.2
Kamble <i>et al</i> ^[26]	232	50	0.2155	[0.1644-0.2741]	3.2
Sharma <i>et al</i> ^[36]	196	64	0.3265	[0.2614-0.3970]	3.2
Qadri <i>et al</i> ^[33]	336	135	0.4018	[0.3489-0.4564]	3.2
Barman <i>et al</i> ^[3]	88	47	0.5341	[0.4246-0.6412]	2.9
Banjare <i>et al</i> ^[13]	153	40	0.2614	[0.1938-0.3385]	3.2
Noor <i>et al</i> ^[32]	132	62	0.4697	[0.3823-0.5585]	3.1
Ghosh <i>et al</i> ^[20]	196	96	0.4898	[0.4179-0.5620]	3.2
Kumar <i>et al</i> ^[30]	190	66	0.3474	[0.2799-0.4197]	3.2
Bardhan <i>et al</i> ^[10]	293	30	0.1024	[0.0702-0.1429]	3.3
Dutta <i>et al</i> ^[19]	162	57	0.3519	[0.2786-0.4307]	3.1
Banjare <i>et al</i> ^[14]	153	40	0.2614	[0.1938-0.3385]	3.2
Shubha <i>et al</i> ^[11]	42	15	0.3571	[0.2155-0.5197]	2.6
Alam <i>et al</i> ^[12]	267	113	0.4232	[0.3632-0.4849]	3.2
Gupta <i>et al</i> ^[21]	244	94	0.3852	[0.3239-0.4495]	3.2
Bartwal <i>et al</i> ^[15]	187	77	0.4118	[0.3405-0.4859]	3.2
Naushad <i>et al</i> ^[8]	241	113	0.4689	[0.4045-0.5340]	3.2
Jain <i>et al</i> ^[24]	262	133	0.5076	[0.4454-0.5697]	3.2
Venkateshkrishna <i>et al</i> ^[37]	530	145	0.2736	[0.2360-0.3137]	3.3
Sahu <i>et al</i> ^[35]	61	15	0.2459	[0.1446-0.3729]	2.9
Jacob <i>et al</i> ^[23]	135	77	0.5704	[0.4824-0.6552]	3.1
Reddy <i>et al</i> ^[34]	594	191	0.3215	[0.2841-0.3608]	3.3
Gupta <i>et al</i> ^[22]	132	59	0.4470	[0.3604-0.5359]	3.1

Table 3 Tests of heterogeneity among studies of the male Indian geriatric population

Test of heterogeneity	Prevalence	LCI 95%	HCI 95%
Pooled Statistics	0.38	0.33	0.43
Heterogeneity	4.48	4.02	4.98
I-squared	95.0	93.8	96.0
Cochran's Q	621.09		
χ^2 , P value	0.0001		
τ^2	0.0197		

Table 4 Prevalence of cardiovascular diseases in the female Indian geriatric population

Study name	N	Cases	Proportion	95%CI	%W (Random)
Joshi <i>et al</i> ^[25]	102	57	0.5588	[0.4571-0.6571]	3.0
Hazarika <i>et al</i> ^[9]	388	244	0.6289	[0.5787-0.6771]	3.2
Prakash <i>et al</i> ^[2]	110	60	0.5455	[0.4477-0.6407]	3.0
Kishore <i>et al</i> ^[29]	108	48	0.4444	[0.3488-0.5432]	3.0
Bhatia <i>et al</i> ^[17]	209	97	0.4641	[0.3950-0.5342]	3.1
Chandrashekhara <i>et al</i> ^[11]	189	30	0.1587	[0.1097-0.2188]	3.2
Lena <i>et al</i> ^[31]	121	73	0.6033	[0.5104-0.6911]	3.0
Bhatt <i>et al</i> ^[18]	144	56	0.3889	[0.3088-0.4736]	3.1
Bharati <i>et al</i> ^[16]	122	68	0.5574	[0.4647-0.6472]	3.0
Khanam <i>et al</i> ^[28]	248	101	0.4073	[0.3455-0.4712]	3.2
Kamble <i>et al</i> ^[26]	262	69	0.2634	[0.2111-0.3211]	3.2
Sharma <i>et al</i> ^[36]	204	98	0.4804	[0.4101-0.5513]	3.1
Qadri <i>et al</i> ^[33]	324	159	0.4907	[0.4351-0.5466]	3.2
Barman <i>et al</i> ^[3]	72	34	0.4722	[0.3533-0.5935]	2.9
Noor <i>et al</i> ^[32]	92	46	0.5000	[0.3939-0.6061]	2.9
Ghosh <i>et al</i> ^[20]	235	82	0.3489	[0.2881-0.4136]	3.2
Kumar <i>et al</i> ^[30]	212	71	0.3349	[0.2717-0.4028]	3.1
Bardhan <i>et al</i> ^[10]	197	19	0.0964	[0.0591-0.1465]	3.2
Dutta <i>et al</i> ^[19]	208	77	0.3702	[0.3044-0.4397]	3.1
Banjare <i>et al</i> ^[14]	157	20	0.1274	[0.0796-0.1899]	3.2
Shubha <i>et al</i> ^[11]	138	19	0.1377	[0.0850-0.2066]	3.2
Alam <i>et al</i> ^[12]	373	207	0.5550	[0.5029-0.6061]	3.2
Karanth <i>et al</i> ^[27]	500	130	0.2600	[0.2221-0.3008]	3.2
Gupta <i>et al</i> ^[21]	290	158	0.5448	[0.4856-0.6031]	3.2
Bartwal <i>et al</i> ^[15]	253	99	0.3913	[0.3308-0.4544]	3.2
Naushad <i>et al</i> ^[8]	369	207	0.5610	[0.5087-0.6123]	3.2
Jain <i>et al</i> ^[24]	338	144	0.4260	[0.3727-0.4807]	3.2
Venkateshkrishna <i>et al</i> ^[37]	922	402	0.4360	[0.4037-0.4687]	3.2
Sahu <i>et al</i> ^[35]	170	52	0.3059	[0.2376-0.3811]	3.1
Jacob <i>et al</i> ^[23]	268	124	0.4627	[0.4018-0.5244]	3.2
Reddy <i>et al</i> ^[34]	671	193	0.2876	[0.2536-0.3235]	3.2
Gupta <i>et al</i> ^[22]	168	88	0.5238	[0.4455-0.6013]	3.1

Table 5 Tests of heterogeneity among studies of the female Indian geriatric population

Tests of heterogeneity	Prevalence	LCI 95%	HCI 95%
Pooled Statistics	0.409	0.355	0.462
Heterogeneity	5.31	4.82	5.84
I-squared	96.4	95.7	97.1
Cochran's Q	873.0		
χ^2 , P value	0.0001		
τ^2	0.0229		

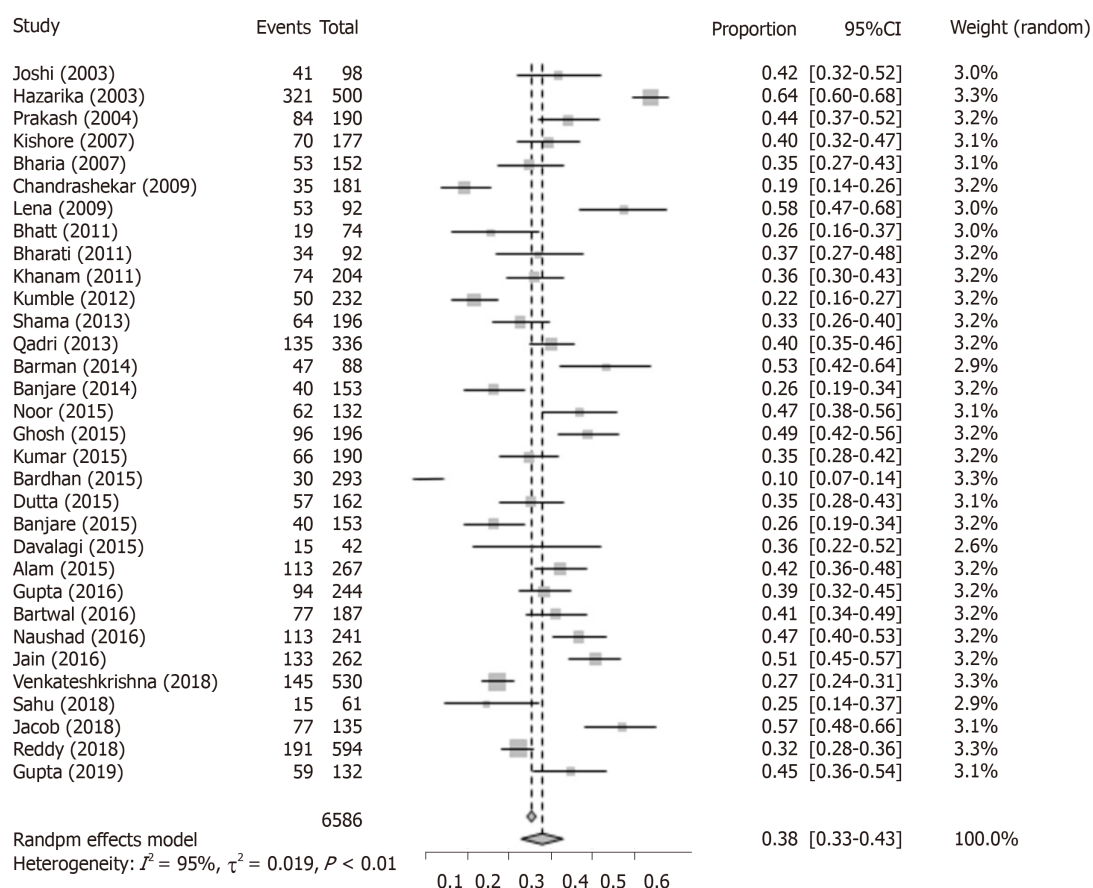


Figure 2 Forest plot of the meta-analysis of cardiovascular disease prevalence in the male Indian geriatric population.

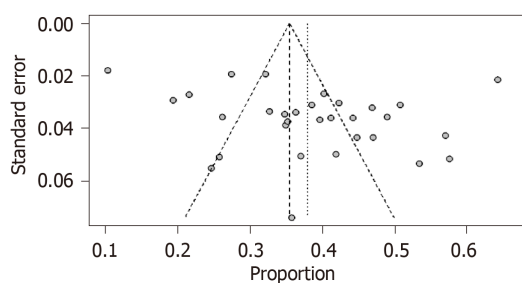


Figure 3 Funnel plot showing publication bias in the meta-analysis of the prevalence of cardiovascular diseases in the male Indian geriatric population.

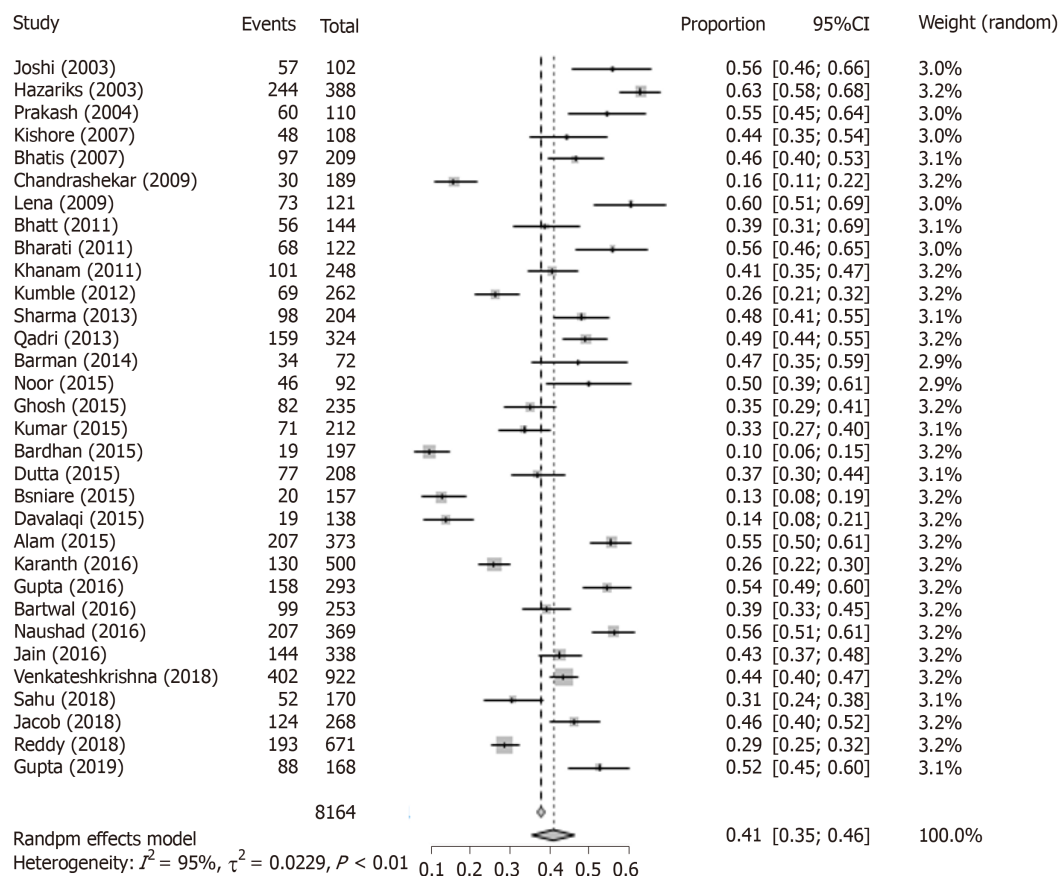


Figure 4 Forest plot of the meta-analysis of cardiovascular disease prevalence in the female Indian geriatric population.

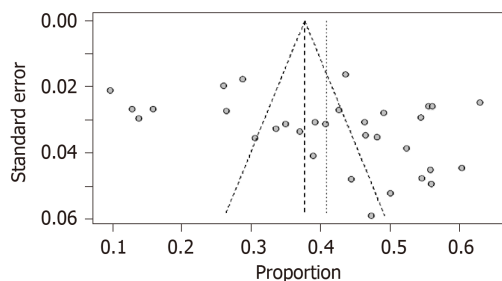


Figure 5 Funnel plot showing publication bias in the meta-analysis of prevalence of cardiovascular diseases in the female Indian geriatric population.

ARTICLE HIGHLIGHTS

Research background

India is in the phase of demographic transition. From the 2011 census, there are 104 million elderly persons in India as compared with 57 million elderly persons in 1991. The elderly are exposed to several morbidities such as cardiovascular diseases (CVDs), diabetes, hypertension, etc. CVDs have become the leading cause of mortality in India. An estimated 17.7 million people in India will die from CVDs representing 31% of all global deaths. Therefore, a precise estimate of the prevalence of CVDs in elderly males and females in India is required to assess the magnitude of the problem which needs to be addressed.

Research motivation

Very few studies are available on the prevalence of CVDs in India. The gender pooled estimate of CVDs from various studies conducted in different regions of the country can aid the development of preventive strategies. The difference in the prevalence of CVDs among male and female geriatric subjects was studied to provide an insight into the type of preventive and promotional services required.

Research objectives

The main objective of the study was to provide the gender pooled estimate of the prevalence of CVDs in the geriatric population of India. The large increase in the prevalence of CVDs in the Indian geriatric population has prompted health managers to take immediate steps for the prevention and early detection of these diseases. In addition, researchers are attempting to identify the location- and age-specific pooled estimate of the prevalence of CVDs. The main application of this meta-analysis is to consolidate the available data to determine the burden of CVDs in India.

Research methods

Secondary data related to the prevalence of CVDs in the geriatric population were collected from published research papers and then analyzed using meta-analysis in R software. A meta-analysis integrates the quantitative findings from separate studies and provides a numerical estimate of the overall effect of interest.

Research results

The overall prevalence of CVDs in the Indian geriatric population was estimated to be 36.6% (95%CI: 31.9%-41.3%). The prevalence of CVDs in the male geriatric population was 38.0%, whereas the prevalence of CVDs in the elderly female population was 40.9%.

Research conclusions

The pooled prevalence of CVDs in the female Indian geriatric population was greater than the pooled prevalence of CVDs in the male Indian population. These findings will help policy makers to take immediate steps to provide geriatric health care services in India. It is possible that an insight into the magnitude of the problem of CVDs can help to shape preventive programs for CVDs.

Research perspective

Future studies should be conducted to determine the pooled estimate of CVDs in the geriatric population in both rural and urban areas, and in different age-groups. Subgroup analysis in meta-regression can be used to calculate these values.

REFERENCES

- 1 **Chandrashekhkar R**, Gududur AK, Reddy S. Cross sectional study of morbidity pattern among geriatric population in urban and rural area of Gulbarga. *Medica Innovatica* 2014; **3**: 36-41
- 2 **Prakash R**, Choudhary SK, Singh US. A study of morbidity pattern among geriatric population in an urban area of Udaipur Rajasthan. *Indian J Community Med* 2004; **29**: 35-40
- 3 **Barman SK**, Lata K, Ram R, Ghosh N, Sarker G, Shahnawaz K. A study of morbidity profile of geriatric population in an urban community of Kishanganj, Bihar, India. *Int J Medicine & Public Health* 2014; **3**: 1-6
- 4 **World Health Organization**. Ageing and Health 2018. Available from: <https://www.who.int/news-room/fact-sheets/detail/ageing-and-health>
- 5 **Central Statistics Office, MOSPI Report on Elderly in India 2016**. Available from: http://mospi.nic.in/sites/default/files/publication_reports/ElderlyinIndia_2016.pdf
- 6 **World Health Organization**. About cardiovascular diseases. Available from: https://www.who.int/cardiovascular_diseases/about_cvd/en/
- 7 **World Health Organization**. Cardiovascular diseases (CVDs). Available from: <https://www.who.int/en/news-room/fact-sheets/detail/cardiovascular-diseases-cvds>
- 8 **Naushad A**, Verma N, Bhawani D, Jain M, Anand T, Umate LV. Morbidity pattern and health seeking behaviour in elderly population of Raipur city, Chhattisgarh, India. *Indian J Community Health* 2016; **28**: 236-241
- 9 **Hazarika NC**, Biswas D, Mahanta J. Hypertension in the elderly population of Assam. *J Assoc Physicians India* 2003; **51**: 567-573 [PMID: 15266922]
- 10 **Bardhan H**, Dixit AM, Agarwal R, Jain PK, Gupta S, Shukla SK. Morbidity profile of elderly population in Ghaziabad district: a cross-sectional study. *Int J Med Sci Public Health* 2015; **5**: 1098-1102 [DOI: 10.5455/ijmsph.2016.24082015162]
- 11 **Shubha B**, Angadi N, Mahabalaraju DK. Morbidity and psycho-social profile of the elderly population in urban slums of Davangere city, India. *Int J Res Med Sci* 2015; **3**: 3288-3291 [DOI: 10.18203/2320-6012.ijrms20151178]
- 12 **Alam MN**, Soni GP, Jain KK, Verma S, Panda PS. Prevalence and determinants of hypertension in elderly population of Raipur city, Chhattisgarh. *Int J Res Med Sci* 2015; **3**: 568-573 [DOI: 10.5455/2320-6012.ijrms20150307]
- 13 **Banjare P**, Pradhan J. Socio-economic inequalities in the prevalence of multi-morbidity among the rural elderly in Bargarh District of Odisha (India). *PLoS One* 2014; **9**: e97832 [PMID: 24902041 DOI: 10.1371/journal.pone.0097832]
- 14 **Banjare P**, Dwivedi R, Pradhan J. Factors associated with the life satisfaction amongst the rural elderly in Odisha, India. *Health Qual Life Outcomes* 2015; **13**: 201 [PMID: 26691176 DOI: 10.1186/s12955-015-0398-y]
- 15 **Bartwal J**, Rawat CMS, Awsthi S. Morbidity pattern among the geriatric population in rural area of Haldwani block in Nainital district of Uttarakhand. *Indian J Forensic Com Med* 2016; **3**: 209-213 [DOI: 10.5958/2394-6776.2016.00046.1]
- 16 **Bharati DR**, Pal R, Rekha R, Yamuna TV, Kar S, Radjou AN. Ageing in Puducherry, South India: An overview of morbidity profile. *J Pharm Bioallied Sci* 2011; **3**: 537-542 [PMID: 22219588 DOI: 10.4103/0975-7406.90111]
- 17 **Bhatia SPS**, Swami HM, Thakur JS, Bhatia V. A Study of Health Problems and Loneliness among the Elderly in Chandigarh. *Indian J Community Med* 2007; **32**: 255-258 [DOI: 10.4103/0970-0218.37689]

- 18 **Bhatt R**, Gadhvi MS, Sonaliya KN, Solanki A, Nayak H. An Epidemiological Study of the morbidity pattern among the elderly population in Ahmadabad, Gujarat. *National J Community Med* 2011; **2**: 233-236
- 19 **Dutta RK**, Das BR, Saikia H, Barua A. Health seeking behaviour of elderly for common morbidities in a block of Dibrugarh district of Assam. *Int J Acad Res Multidisciplinary* 2015; **3**: 149-157
- 20 **Ghosh A**, Sarkar D, Pal R, Mukherjee B. A profile of common morbidities among elderly rural Indian population. *American J Pub Health Res* 2015; **3**: 29-33
- 21 **Gupta A**, Girdhar S, Choudhary A, Chawla JS, Kaushal P. Patterns of multimorbidity among elderly in an urban area of northern India. *J Evol Med Dent Sci* 2016; **5**: 936-941 [DOI: [10.14260/jemds/2016/218](https://doi.org/10.14260/jemds/2016/218)]
- 22 **Gupta E**, Thakur A, Dixit S. Morbidity pattern and health seeking behavior of the geriatric population in a rural area of district Faridabad, Haryana: a cross-sectional study. *Int J Community Med Public Health* 2019; **6**: 1096-1101 [DOI: [10.18203/2394-6040.ijcmph20190592](https://doi.org/10.18203/2394-6040.ijcmph20190592)]
- 23 **Jacob SR**, Kannan S. Hypertension and other morbidities among a rural geriatric population of North Kerala. *Int J Community Med Public Health* 2018; **5**: 3418-3422 [DOI: [10.18203/2394-6040.ijcmph20183073](https://doi.org/10.18203/2394-6040.ijcmph20183073)]
- 24 **Jain S**, Kaware AC, Doibale MK, Shaikh S, Radhey BK, Mathurkar MP. Morbidity pattern among geriatric population in urban field practice area of district of Maharashtra: a cross-sectional study. *Int J Community Med Public Health* 2016; **3**: 523-529 [DOI: [10.18203/2394-6040.ijcmph20160444](https://doi.org/10.18203/2394-6040.ijcmph20160444)]
- 25 **Joshi K**, Kumar R, Avasthi A. Morbidity profile and its relationship with disability and psychological distress among elderly people in Northern India. *Int J Epidemiol* 2003; **32**: 978-987 [PMID: [14681260](https://pubmed.ncbi.nlm.nih.gov/14681260/) DOI: [10.1093/ije/dyg204](https://doi.org/10.1093/ije/dyg204)]
- 26 **Kamble SV**, Ghodke YD, Dhumale GB, Avchat SS, Goyal RC. Health status of elderly persons in rural area of India. *Indian Med Gazette* 2012; 295-299
- 27 **Karanth H**, Thalenjeri P. A retrospective study of the morbidity pattern in geriatric women of coastal Karnataka. *Int J Med Sci Public Health* 2016; **5**: 2146-2149 [DOI: [10.5455/ijmsph.2016.10032016425](https://doi.org/10.5455/ijmsph.2016.10032016425)]
- 28 **Khanam MA**, Streatfield PK, Kabir ZN, Qiu C, Cornelius C, Wahlin Å. Prevalence and patterns of multimorbidity among elderly people in rural Bangladesh: a cross-sectional study. *J Health Popul Nutr* 2011; **29**: 406-414 [PMID: [21957680](https://pubmed.ncbi.nlm.nih.gov/21957680/) DOI: [10.3329/jhpn.v29i4.8458](https://doi.org/10.3329/jhpn.v29i4.8458)]
- 29 **Kishore S**, Juyal R, Semwal J, Chandra R. Morbidity profile of elderly persons. *JK Science* 2007; **9**: 87-89
- 30 **Kumar D**, Kumari R, Shanker H. Health status and health seeking behaviour of rural geriatric population of Varanasi district, India. *Int J Med Sci Public Health* 2015; **4**: 1711-1714 [DOI: [10.5455/ijmsph.2015.22052015353](https://doi.org/10.5455/ijmsph.2015.22052015353)]
- 31 **Lena A**, Ashok K, Padma M, Kamath V, Kamath A. Health and social problems of the elderly: a cross-sectional study in udupi taluk, karnataka. *Indian J Community Med* 2009; **34**: 131-134 [PMID: [19966960](https://pubmed.ncbi.nlm.nih.gov/19966960/) DOI: [10.4103/0970-0218.51236](https://doi.org/10.4103/0970-0218.51236)]
- 32 **Noor S**, Krishnababu G, Prasad KVS. Health Status of Geriatric Population in urban slums of Rourkela. *Innov J Med Public Health* 2015; **5**: 92-94
- 33 **Qadri S**, Ahluwalia SK, Ganai A, Bali S, Wani F and Bashir H. An epidemiological study on quality of life among rural elderly population of northern India. *Int J Med Sci Public Health* 2013; **2**: 514-522 [DOI: [10.5455/ijmsph.2013.2.492-500](https://doi.org/10.5455/ijmsph.2013.2.492-500)]
- 34 **Reddy ES**, Nagaraj K, Takalkar A. Morbidity profile of geriatric population of rural Telangana: a cross sectional study. *MedPulse Int J Community Med* 2018; **8**: 7-10 [DOI: [10.26611/1011821](https://doi.org/10.26611/1011821)]
- 35 **Sahu Y**, Srivastava M, Kumar A, Singh SP. Socio-demographic characteristics, nutritional status and health problems of elderly living in old age homes in Varanasi: a cross sectional study. *Indian J Prev Soc Med* 2018; **49**: 54-59
- 36 **Sharma D**, Mazta SR, Parashar A. Morbidity Pattern and Health-seeking Behavior of Aged Population residing in Shimla Hills of North India: A Cross-Sectional Study. *J Family Med Prim Care* 2013; **2**: 188-193 [PMID: [24479077](https://pubmed.ncbi.nlm.nih.gov/24479077/) DOI: [10.4103/2249-4863.117421](https://doi.org/10.4103/2249-4863.117421)]
- 37 **Venkateshkrishna N**, Suresh S. A cross sectional study on the prevalence of diseases among the geriatric population in the rural field areas of a tertiary care hospital in Mangluru, India. *J Pharm Pract Community Med* 2018; **4**: 30-32 [DOI: [10.5530/jppcm.2018.1.8](https://doi.org/10.5530/jppcm.2018.1.8)]



Published By Baishideng Publishing Group Inc
7041 Koll Center Parkway, Suite 160, Pleasanton, CA 94566, USA
Telephone: +1-925-3991568
E-mail: bpgoffice@wjgnet.com
Help Desk: <https://www.f6publishing.com/helpdesk>
<https://www.wjgnet.com>

