

World Journal of *Clinical Oncology*

World J Clin Oncol 2020 March 24; 11(3): 110-168



**REVIEW**

- 110** Glycoconjugation: An approach to cancer therapeutics
Molejon MI, Weiz G, Breccia JD, Vaccaro MI
- 121** Roles of cell fusion, hybridization and polyploid cell formation in cancer metastasis
Shabo I, Svanvik J, Lindström A, Lechertier T, Trabulo S, Hulit J, Sparey T, Pawelek J

ORIGINAL ARTICLE**Retrospective Study**

- 136** What factors influence patient experience in orthopedic oncology office visits?
Blank AT, Shaw S, Wakefield CJ, Zhang Y, Liu WJ, Jones KB, Randall RL
- 143** Efficacy, patterns of use and cost of Pertuzumab in the treatment of HER2+ metastatic breast cancer in Singapore: The National Cancer Centre Singapore experience
Rahardja S, Tan RYC, Sultana R, Leong FL, Lim EH

EVIDENCE-BASED MEDICINE

- 152** Assessment methods and services for older people with cancer in the United Kingdom
Kalsi T, Harari D

CASE REPORT

- 162** Thrombocytopenia with multiple splenic lesions - histiocytic sarcoma of the spleen without splenomegaly: A case report
Huang K, Columbie AF, Allan RW, Misra S

ABOUT COVER

Editorial Board Member of *World Journal of Clinical Oncology*, Antonio Giordano, MD, PhD, Professor, Center for Biotechnology, Temple University, Philadelphia, PA 19122, United States

AIMS AND SCOPE

The primary aim of *World Journal of Clinical Oncology* (WJCO, *World J Clin Oncol*) is to provide scholars and readers from various fields of oncology with a platform to publish high-quality basic and clinical research articles and communicate their research findings online.

WJCO mainly publishes articles reporting research results and findings obtained in the field of oncology and covering a wide range of topics including art of oncology, biology of neoplasia, breast cancer, cancer prevention and control, cancer-related complications, diagnosis in oncology, gastrointestinal cancer, genetic testing for cancer, gynecologic cancer, head and neck cancer, hematologic malignancy, lung cancer, melanoma, molecular oncology, neurooncology, palliative and supportive care, pediatric oncology, surgical oncology, translational oncology, and urologic oncology.

INDEXING/ABSTRACTING

The WJCO is now abstracted and indexed in PubMed, PubMed Central, Emerging Sources Citation Index (Web of Science), China National Knowledge Infrastructure (CNKI), China Science and Technology Journal Database (CSTJ), and Superstar Journals Database.

RESPONSIBLE EDITORS FOR THIS ISSUE

Responsible Electronic Editor: *Lu-Lu Qi*
Proofing Production Department Director: *Yun-Xiaojuan Wu*

NAME OF JOURNAL

World Journal of Clinical Oncology

ISSN

ISSN 2218-4333 (online)

LAUNCH DATE

November 10, 2010

FREQUENCY

Monthly

EDITORS-IN-CHIEF

Hitendra Patel

EDITORIAL BOARD MEMBERS

<https://www.wjgnet.com/2218-4333/editorialboard.htm>

EDITORIAL OFFICE

Ruo-Yu Ma, Director

PUBLICATION DATE

March 24, 2020

COPYRIGHT

© 2020 Baishideng Publishing Group Inc

INSTRUCTIONS TO AUTHORS

<https://www.wjgnet.com/bpg/gerinfo/204>

GUIDELINES FOR ETHICS DOCUMENTS

<https://www.wjgnet.com/bpg/GerInfo/287>

GUIDELINES FOR NON-NATIVE SPEAKERS OF ENGLISH

<https://www.wjgnet.com/bpg/gerinfo/240>

PUBLICATION MISCONDUCT

<https://www.wjgnet.com/bpg/gerinfo/208>

ARTICLE PROCESSING CHARGE

<https://www.wjgnet.com/bpg/gerinfo/242>

STEPS FOR SUBMITTING MANUSCRIPTS

<https://www.wjgnet.com/bpg/GerInfo/239>

ONLINE SUBMISSION

<https://www.f6publishing.com>



Roles of cell fusion, hybridization and polyploid cell formation in cancer metastasis

Ivan Shabo, Joar Svanvik, Annelie Lindström, Tanguy Lechertier, Sara Trabulo, James Hulit, Tim Sparey, John Pawelek

ORCID number: Ivan Shabo (0000-0002-9866-4192); Joar Svanvik (0000-0002-2573-3185); Annelie Lindström (0000-0003-2130-5375); Tanguy Lechertier (0000-0002-0202-8424); Sara Trabulo (0000-0002-3178-2119); James Hulit (0000-0002-3908-5609); Tim Sparey (0000-0002-5369-8751); John Pawelek (0000-0001-8132-5234).

Author contributions: Shabo I and Svanvik J initiated the review article; Shabo I, Svanvik J, Lindström A, Lechertier T, Trabulo S, Hulit J, Sparey T and Pawelek J contributed to writing and proofreading the paper; Shabo I, Pawelek J and Hulit J designed and edited the figures.

Conflict-of-interest statement: Dr. Tim Sparey received salary (not related to the submitted work) from Novintum Bioscience Ltd, London, England. The other authors have no conflict of interest.

Open-Access: This article is an open-access article that was selected by an in-house editor and fully peer-reviewed by external reviewers. It is distributed in accordance with the Creative Commons Attribution NonCommercial (CC BY-NC 4.0) license, which permits others to distribute, remix, adapt, build upon this work non-commercially, and license their derivative works on different terms, provided the original work is properly cited and the use is non-commercial. See: <http://creativecommons.org/licenses/by-nc/4.0/>

Manuscript source: Invited

Ivan Shabo, Endocrine and Sarcoma Surgery Unit, Department of Molecular Medicine and Surgery, Karolinska Institute, Stockholm SE 171 77, Sweden

Ivan Shabo, Patient Area of Breast Cancer, Sarcoma and Endocrine Tumours, Theme Cancer, Karolinska University Hospital, Stockholm SE 171 76, Sweden

Joar Svanvik, The Transplant Institute, Sahlgrenska University Hospital, Gothenburg SE 413 45, Sweden

Joar Svanvik, Division of Surgery, Department of Biomedical and Clinical Sciences, Faculty of Medicine and Health Sciences, Linköping University, Linköping SE 581 83, Sweden

Annelie Lindström, Division of Cell Biology, Department of Biomedical and Clinical Sciences, Faculty of Medicine and Health Sciences, Linköping University, Linköping SE 581 85, Sweden

Tanguy Lechertier, Sara Trabulo, James Hulit, Tim Sparey, Novintum Bioscience Ltd, London Bioscience Innovation Centre, London NW1 0NH, United Kingdom

John Pawelek, Department of Dermatology and the Yale Cancer Center, Yale University School of Medicine, New Haven, CT 06520, United States

Corresponding author: Ivan Shabo, MD, PhD, Associate Professor, Surgeon, Endocrine and Sarcoma Surgery Unit, Department of Molecular Medicine and Surgery, Karolinska Institutet, Stockholm Nobels väg 6, Stockholm SE 171 77, Sweden. ivan.shabo@ki.se

Abstract

Cell-cell fusion is a normal biological process playing essential roles in organ formation and tissue differentiation, repair and regeneration. Through cell fusion somatic cells undergo rapid nuclear reprogramming and epigenetic modifications to form hybrid cells with new genetic and phenotypic properties at a rate exceeding that achievable by random mutations. Factors that stimulate cell fusion are inflammation and hypoxia. Fusion of cancer cells with non-neoplastic cells facilitates several malignancy-related cell phenotypes, *e.g.*, reprogramming of somatic cell into induced pluripotent stem cells and epithelial to mesenchymal transition. There is now considerable *in vitro*, *in vivo* and clinical evidence that fusion of cancer cells with motile leucocytes such as macrophages plays a major role in cancer metastasis. Of the many changes in cancer cells after hybridizing with leucocytes, it is notable that hybrids acquire resistance to chemo- and radiation therapy. One phenomenon that has been largely overlooked yet plays a

manuscript

Received: September 20, 2019**Peer-review started:** September 20, 2019**First decision:** December 6, 2019**Revised:** January 2, 2020**Accepted:** March 1, 2020**Article in press:** March 1, 2020**Published online:** March 24, 2020**P-Reviewer:** Avtanski D, Corrales FJ, Ding MX, Gao BL, Kim HS, Matsuo Y, Yao HR**S-Editor:** Ma L**L-Editor:** A**E-Editor:** Qi LL

role in these processes is polyploidization. Regardless of the mechanism of polyploid cell formation, it happens in response to genotoxic stresses and enhances a cancer cell's ability to survive. Here we summarize the recent progress in research of cell fusion and with a focus on an important role for polyploid cells in cancer metastasis. In addition, we discuss the clinical evidence and the importance of cell fusion and polyploidization in solid tumors.

Key words: Cell fusion; Hybrid formation; Polyploidization; Macrophage; Cancer progression; Oncologic treatment resistance

©The Author(s) 2020. Published by Baishideng Publishing Group Inc. All rights reserved.

Core tip: Cell fusion is a normal biological process involved in organ formation and tissue repair. Through cell fusion, somatic cells undergo nuclear reprogramming and epigenetic modifications to form hybrid cells with new properties. Fusion of cancer cells with macrophages plays a major role in cancer metastasis and results in resistance to chemo- and radiation therapy. Cell fusion might be a potential target for the development of new antitumor therapies through macrophage depletion in tumour stroma and prevention of cell fusion and post-hybridization events involving chemotaxis and cell migration to lymph nodes and distant metastases.

Citation: Shabo I, Svanvik J, Lindström A, Lechertier T, Trabulo S, Hulit J, Sparey T, Pawelek J. Roles of cell fusion, hybridization and polyploid cell formation in cancer metastasis. *World J Clin Oncol* 2020; 11(3): 121-135

URL: <https://www.wjgnet.com/2218-4333/full/v11/i3/121.htm>

DOI: <https://dx.doi.org/10.5306/wjco.v11.i3.121>

INTRODUCTION

Cell fusion is a common biological process that produces viable cells and plays a major role in mammalian tissue development and differentiation. Cell fusion is essential during embryogenesis and morphogenesis, *e.g.*, when trophoblasts in placenta fuse to form syncytiotrophoblasts, in developing of skeletal muscle that arises from the fusion of mesodermal cells^[1], and when osteoclasts and multinucleated giant cells are generated from the fusion of macrophages^[2,3]. Cell fusion also plays a role in tissue repair and regeneration, *e.g.*, in liver, heart and intestine^[4-6]. Through cell fusion, somatic cells undergo nuclear reprogramming and epigenetic modifications to form pluripotent hybrid cells. Cell fusion can result in rapid modifications of the genetic and epigenetic programs of cells, generating cells with new properties at a rate exceeding that achievable by random mutations^[6-8].

Cell fusion may result in two forms of hybrids: Heterokaryons or synkaryons. When bi- or multinucleated hybrids are generated (heterokaryons), the parental genomes are located in different nuclei, segregated from one another. These hybrids are capable of cell divisions resulting in daughter cells expressing both parental sets of chromosomes in a single nucleus^[9,10]. Hybrids with parental genomes mixed in a single nucleus are called synkaryons^[11-14]. In culture, fusion events depend on the cell density, the cell ratio of the parental populations and their microenvironment^[15].

CELL FUSION, POLYPLOIDIZATION AND CANCER

Polyploid cells contain more than two basic sets of chromosomes. Polyploidy is a natural phenomenon that contributes to tissue differentiation, normal organogenesis and tissue repair^[16,17]. It appears that most polyploid cells in mammals are formed through cell fusion^[18], but also through abnormal cell division such as endoreplication, endomitosis and failed cytokinesis after completion of mitosis^[19-21]. The formation of multinucleated fusion hybrids may allow genetic complementation capable of rescuing loss of gene function after chemotherapeutic or radiation induced DNA damage^[22-24]. Formation of polyploid cells with a selective advantage may serve as a cell survival mechanism^[25].

In 1911, a German professor, Otto Aichel, proposed that fusion of cancer cells with

leucocytes produces hybrids with a metastatic phenotype. A century later, this prescient insight has proven to be correct in many studies. Indeed, leucocyte-cancer cell fusion causes cellular reprogramming and generates new clones of hybrids at least some of which acquire the ability for chemotactic migration by combining the epigenetic program of the leucocyte with the uncontrolled cell division of the cancer cell^[8,26,27] (Figure 1). Tumour cells are fusogenic and fuse with other cancer cells and non-neoplastic cells in the tumour stroma. Spontaneous fusion between cancer cells is a well-documented phenomenon in solid tumors and generates heterogeneous subpopulations of tumor cells^[28-31]. Several studies have shown that fusion of cancer cells with non-neoplastic cells facilitates several malignancy-related cell phenotypes, *e.g.*, reprogramming of somatic cell into induced pluripotent stem cells and epithelial to mesenchymal transition (EMT) (Figure 1). These processes also produce cellular polyploidy.

Polyploid giant cancer cells (PGCCs) are cells with multiple nuclei or a single giant nucleus containing multiple sets of chromosomes. Compared to regular diploid cells, PGCCs can be 10 to 20 times larger in size and have tetraploid or greater ($\geq 4C$) DNA content^[32]. The mechanism leading to formation of PGCC may have similarities to wound repair and tissue regeneration, each of which utilizes or depends on cell fusion and endomitotic and endoreplication mechanisms. Regardless of the mechanism of polyploid cells formation, it happens in response to genotoxic stresses such as those occurring in hypoxic/necrotic regions of the tumor and during chemo- and radiotherapy. Polyploidy then enhances a cancer cell's ability to survive. Even though the formation of hybrids between cancer cells and bone marrow derived cells (BMDCs) most likely occurs stochastically^[26], disease progression and standard of care treatments such as chemo- and radiotherapy, can act as driving forces that may increase the frequency of hybridization events^[33,34]. The basis of this increase may be due to increased inflammation and/or an aberrant wound and damage response mechanism leading to the formation of PGCC^[35,36].

Aneuploidy is a hallmark of cancer and is proposed to have a fundamental role during tumour initiation and progression. Approximately 90% of solid tumors and 75% of hematopoietic malignancies have abnormal chromosome numbers^[37,38]. Centrosome aberrations are suggested as one mechanism that causes the formation of aneuploid genomes. An important evolutionary feature of polyploid cancer cells is the generation of aneuploid clones during the reversal of the polyploid state, which is a chaotic process with many genomic translocations, amplifications and deletions occurring during creation of progeny^[39]. The presence of centrosome aberrations in polyploid cancer cells suggests that cell fusion and the formation of polyploid cancer cells may be strong contributors to aneuploidy^[40,41].

Cell fusion and cancer-stem cells

Cancer stem cells (CSCs) are subpopulations of tumour cells with stem cell-like traits. These traits include high plasticity and the capacity for self-renewal through asymmetric division. CSCs sustain tumourigenesis and generate diverse progeny with the ability to remain dormant while demonstrating resistance to conventional cancer therapeutics^[42]. The stem cell theory in cancer, however, is debated due to controversy about evidence supporting the origins of CSCs, their differentiation and dedifferentiation, genetic heterogeneity, symmetric and asymmetric concepts of cellular division, and clonal evolution^[43,44].

Cell fusion could be a mechanism to generate CSCs (Figure 2). Gauck *et al*^[45] showed that spontaneous fusion of human breast epithelial cells and human breast cancer cells can give rise to hybrid cells that possess CSC properties with significantly increased colony forming capacity compared to the maternal epithelial cells. In a polyethylene glycol mediated fusion experiment, Flasz *et al*^[46] demonstrated that murine P19 and human NTERA2/D1 embryonal carcinoma hybrid cells displayed heterogeneity in cellular morphology and gene expression. The hybrids expressed stemness factors octamer-binding transcription factor 4, homeobox protein Nanog and Sex Determining Region Y-Box 2, indicating the activation of endogenous human markers of pluripotency. In another example, spontaneously formed heterotypic hybrids between mesenchymal stem cells and lung cancer cells expressed the stem cell marker prominin-1, which was increased 30-fold in hybrids cells compared to their maternal lung cancer cells. The hybrids also exhibited increased expression of the transcription factors octamer-binding transcription factor 4, Aldehyde dehydrogenase 1, B-lymphoma Mo-MLV insertion region 1, and Sex Determining Region Y-Box 2, suggestive of a stem cell-like phenotype^[47].

Cell fusion causes chromosomal instability, tumour heterogeneity and DNA exchange

Most malignant tumors are polyclonal. Clonal heterogeneity may be caused by

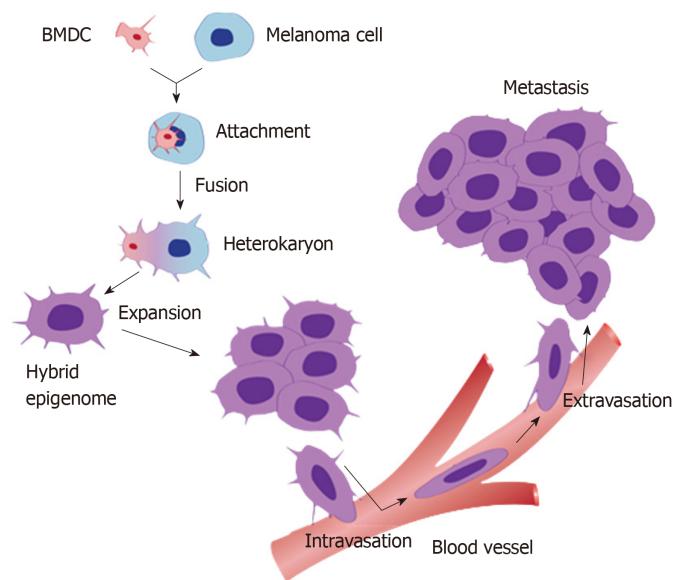


Figure 1 A schematic diagram of the process of cell fusion, hybrid formation and metastasis. A motile bone marrow derived cells (red) such as a macrophage or stem cell is drawn to a cancer cell (blue). The outer cell membranes of the two cells become attached. Fusion occurs with the formation of a bi-nucleated heterokaryon having a nucleus from each of the fusion partners. The heterokaryon goes through genomic hybridization creating a cancer cell-bone marrow derived cells hybrid with co-expressed epigenomes, conferring deregulated cell division and metastatic competence to the hybrid. BMDC: Bone marrow derived cell.

oncogenic mutations in single cells, epigenetic modulations^[48], and cell fusion^[49]. Chromothripsis, massive genomic rearrangements^[50], is defined as a single catastrophic event in the development of cancer^[51]. In oral squamous cell carcinoma cell lines in culture, irradiation predisposes to cells chromothripsis. The finding of fragmented DNA in aneuploid hybrid cells is an indicator of chromothripsis^[52].

Cell fusion may be homotypic between the same types of cells in the tissue or heterotypic between different cell types like epithelial cells and macrophages. Heterotypic fusion can cause multiple changes in gene expression profiles in the resultant hybrids^[10]. Clonal heterogeneity patterns within primary tumors are often similar to those of distant metastases with similar gene expression profiles. Using a Cre-loxP model system, Searles *et al.*^[53] showed that Cre transfer occurred between cancer and non-cancer cells both in cell cultures and in mice. The rapid transfer of Cre could not be explained by extracellular vesicles but rather by cell fusion.

Cell fusion, cancer and EMT

In order to form metastases, tumour cells need to navigate through a series of obstacles that require a variety of cellular functions and abilities that were absent in the transformed cells of origin. The functions include an invasive escape from the tumour and intravasation into blood or lymphatic vessels. All steps of the metastatic cascade require an ability to overcome the induction of cell death. To escape the circulation, tumour cells need to adhere to the vessel wall and undergo extravasation into other tissues. Once in the tissue, cell growth is required to form metastasis. One mechanism put forth to explain the changes required to perform these functions is EMT. This model explains how neoplastic cells may gain a migratory and invasive phenotype allowing them to escape from the primary tumour. Many studies have identified a subset of embryonic-like transcription factors, such as zinc finger protein SNAI1 and basic helix-loop-helix factor Twist, that form the basis of a gene expression program that drives the transitional change of the phenotype. An alternative mechanism is that cancer-mesenchymal cell fusions generate hybrids that gain the genetic, phenotypic and functional properties of both maternal cells. Xu *et al.*^[54] showed in an *in vivo* non-obese diabetic/severe combined immunodeficiency mouse model that fusion of mesenchymal stem cells with non-small cell lung cancer cells results in hybrids that express both epithelial and mesenchymal markers with increased migratory and invasive capabilities compared to their maternal cancer cells.

In studies by Zhang *et al.*^[55], analysis of polyploidy giant cells (referred to by the authors as "PGCC") in colorectal cancer revealed a strong association with the presence of lymph node metastasis. Potentially the PGCC were responsible for metastasis as a subset of "budding" daughter cells showed a greater migratory and

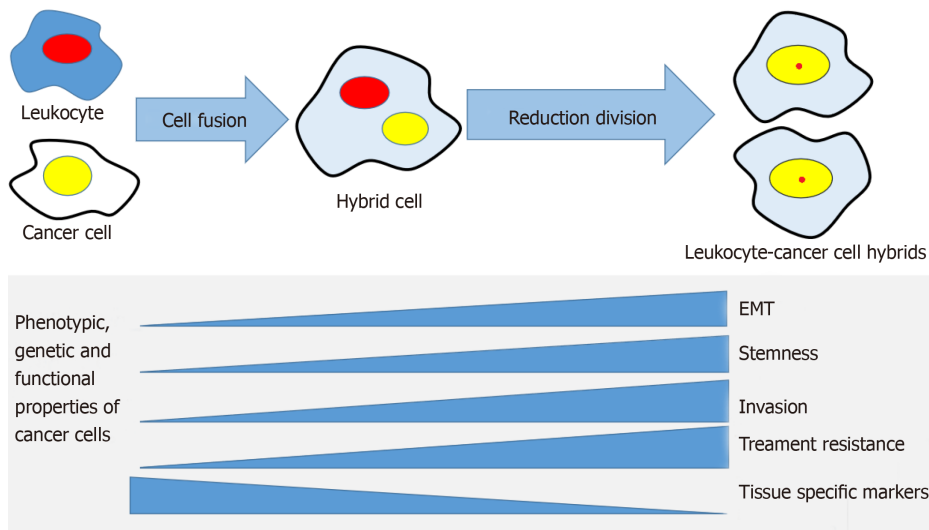


Figure 2 The cell fusion theory in relation to cancer progression mechanisms. A cancer cell and a leukocyte form a hybrid that acquires genetic, phenotypic and functional properties from both maternal cells. The hybrid cells develop properties associated with cancer metastasis, such as epithelial mesenchymal transition, stemness, invasiveness, treatment resistance and may lose some of the maternal cancer cell's tissue-specific phenotype. EMT: Epithelial to mesenchymal transition.

invasive phenotype and expressed the EMT-related proteins Twist and Snail. Similarly, PGCCs induced by the hypoxia mimetic cobalt chloride were capable of generating small diploid cell progeny that also displayed higher levels of EMT related protein expression including vimentin and N-cadherin. These daughter cells had a more invasive phenotype compared to the parental cell type. Importantly, the authors showed that patient samples from breast tumours and metastasis had an increased number of PGCCs with vimentin and N-cadherin expression compared with patient breast tumour samples with no metastasis^[56], indicating a higher metastatic potential of the progeny from the PGCCs.

PGCCs and mitochondrial function

PGCCs form under a diverse set of stimuli as they are found within and adjacent to necrotic regions of tumours, driven by conditions of hypoxia, nutrient deprivation (starvation) and low pH. Individually these stimuli have been shown to induce PGCC *in vitro*. Importantly, oxidative stress is the common feature that links these stimuli. Chemotherapies and radiotherapy which can dramatically induce the transformation to PGCCs also generate oxidative stress generated through excess reactive oxygen species (ROS). Mitochondria are the main generator of ROS and may also act as "sensors" to trigger the PGCC transformation which form and exist under conditions of high oxidative stress^[57-60]. Roh *et al*^[57] showed that PGCCs have increased mitochondrial content as well as elevated levels of ROS. The authors found a correlation between the high ROS levels characteristic of the polyploid cells together with taxol resistance that could be reversed with the use of antioxidants. Similarly, the ROS-producing agent plumbagin induced features of PGCCs on prostate cancer cells, in line with the idea that polyploidy provides a survival advantage to cells that are exposed to high levels of ROS. The authors suggested that besides impacting cancer cell resistance to therapy, the polyploid state could also contribute to the generation of CSCs in response to stress^[59]. In the tumour microenvironment, where growth conditions deteriorate and oxidative stress increases with progression^[61], PGCC are induced at higher rates^[33,62]. Even the number of circulating hybrid cancer cells is increased as shown in liquid biopsies^[63-66].

How cell fusion promotes tumour progression

Cell fusion contributes to tumour progression not only through alteration of the composition and biology of tumour cells *per se*, but also by modifying the tumour microenvironment. Hybridization of cancer cells with *e.g.*, BMDCs, generates hybrids with a significantly faster growth rate *in vivo*^[67,68] and enhanced abilities of colony formation^[68], cell migration and invasion^[47]. Thus, cell fusion alters the biological behaviour of a tumour through the development of new metastatic tumour cell sets with growth-promoting properties, contributing to enhanced tumour growth and metastasis^[69]. Similar observations have been reported in several other studies over the past three decades^[14,70-73].

Cell fusion also contributes to neo-angiogenesis and thus facilitates hematogenic

and lymphatogenic intravasation of tumour cells. Recently, Shen *et al*^[74] demonstrated that dendritic cells can fuse with endothelial progenitor cells and generate hybrids with a significantly faster growth rate, while also producing a greater number of micro-vessels compared to their maternal endothelial progenitor cell. Busund *et al*^[75] showed that *in vivo* growth of cultured tumours consisting of Metha-A sarcoma cell/macrophage hybrids had a significantly higher intratumoural microvessel density and maturation compared to tumours from maternal Metha A sarcoma cells alone. The hybrids released significantly higher amounts of angiogenic peptides, such as vascular endothelial growth factor (VEGF), compared to both maternal macrophages and cancer cells. In renal tissues of individuals with gender-mismatched transplants who had transplant rejection and chronic inflammation, Kerjaschki *et al*^[76] provided clinical evidence that BMDCs, presumably macrophages, function as progenitors of lymphatic endothelial cells, and contribute to lymphangiogenesis by incorporating into the new lymphatic vessel. Moreover, the macrophage might differentiate to VEGF producing cells that drive the division of endothelial cells^[77,78].

MACROPHAGES AS FUSION PARTNERS IN CANCER

Macrophages are a heterogeneous population of cells derived from monocytes. During embryogenesis, they appear first in the yolk sac, then in the liver, and finally in bone marrow. Large populations of tissue macrophages exist in the small intestine, liver (Kupffer cells), and lungs. Blood monocytes arise in the marrow from precursor cells (monoblasts) and enter inflamed or infected tissues, where they may mature into macrophages and increase the resident macrophage populations. Monocytes may also mature into dendritic cells presenting antigens to T cells. Fusion is an important function of macrophages and results in the formation of osteoclasts and multinucleated giant cells^[3].

Macrophages show two different polarization states, M1 and M2, in response to different signals in the microenvironment. M1 macrophages are pro-inflammatory and characterized by the release of inflammatory cytokines and microbicidal/tumoricidal activity. M2-macrophages have an immunosuppressive phenotype and are polarized by anti-inflammatory molecules such as Interleukin (IL)-4, IL-13, and IL-10, apoptotic cells, and immune complexes. M2 macrophages release anti-inflammatory cytokines and have scavenging potentials as well as supporting angiogenesis and tissue repair. Monocyte/macrophage cells are important for tumour cell migration, invasion and metastasis. Tumour associated macrophages (TAM) represent the M2-type and promote tumor progression^[79-83].

Monocytes are actively recruited to the tumour stroma, and high infiltration of TAMs in many tumour types correlate with lymph node involvement and distant metastases^[84]. Inhibition of macrophage infiltration in tumours may suppress metastasis^[85,86]. The clinical significance of macrophage infiltration in tumour stroma, however, is still controversial. High infiltration of TAMs is correlated to poor prognosis in breast, prostatic, ovarian and cervical carcinoma^[87]. In colorectal cancer, there are conflicting data of the clinical significance of macrophage infiltration, but several studies show that low macrophage density in tumour stroma is associated with an unfavourable prognosis^[87-89].

TAMs contribute to angiogenesis, lymphangiogenesis and tumour progression by expressing pro-angiogenic growth factors such as matrix metalloproteinase-12, IL-1, VEGF, and IL-8. Clinical studies have shown that increased infiltration of TAMs in solid tumours is associated with high micro-vessel density and poor prognosis. These data are particularly strong for hormone-dependent cancers, such as breast cancer^[87,90].

INFLAMMATION AND CELL FUSION

The mechanisms causing cell fusion and polyploidization in tumours have close similarities to wound repair and tissue regeneration in non-transformed tissues. Under normal conditions, fusion events are exceptionally rare but increase dramatically in pathological conditions such as after tissue injury and during inflammation. Nygren *et al*^[34] showed that BMDC contribute to the formation of stable and reprogrammed fusion-hybrids in liver, heart and myocardium during tissue repair. Interestingly, the authors observed that despite an attraction of fusogenic blood cells to these tissues following injury-induced inflammation, the cell fusion was restricted to a subset of cells implicated in syncytia formation during development. Johansson *et al*^[91] reported in a parabiotic experimental mouse-model that chronic inflammation, induced by idiopathic ulcerative dermatitis and autoimmune

encephalitis, could increase myelomonocytic cells in peripheral blood and consequently significantly increase (10–100-fold higher) heterokaryon formation of BMDCs with Purkinje neurons.

HYPOXIA/TISSUE STARVATION AND CELL FUSION

The tumour microenvironment is usually characterized by poor vascularization, resulting in hypoxia and deficient access to vital nutrients and elimination of metabolic by-products. Necrosis is common in the deeper parts of the tumour. Despite these seemingly harsh conditions, cells that subsist in this environment have been linked to a more malignant phenotype with stem cell-like properties^[92,93].

As mentioned above, cell fusion is induced by hypoxia and apoptosis. Noubissi *et al.*^[94] used bimolecular fluorescence complementation to detect *in vitro* spontaneous fusion events between co-cultured multipotent stem/stromal cells (mSSC) and either human breast epithelial cells (MCF-10a) or breast cancer cell lines (T47D, MDA-MB-231 and MCF-7). The co-cultures were grown in hypoxic condition (2% O₂ compared to standard tissue culture conditions of 21% O₂) and it was found that hypoxia stimulated a significant increase in fusion between the mSSC and the T47D or MCF-7 non-metastatic breast cancer cells. Hypoxia had, however, no significant impact on the fusion ability of MDA-MB-231 metastatic cancer cells. The authors suggest that hypoxia might promote fusion of non-metastatic cancer cells and therefore enables metastasis, an event that perhaps is not advantageous for the already metastatic MDA-MB-231 cells. It was found also that apoptosis was enhanced by hypoxia in T47D and MCF7 non-metastatic cancer cells. The fusion events were increased if the cell co-cultures were supplemented with apoptotic T47D cells in both normoxic and hypoxic conditions, indicating that cell fusion could be stimulated by apoptosis independently of hypoxia. Melzer *et al.*^[95] reported similar *in vitro* observations and found that cell fusion events varied dramatically between benign or malignant breast cells when used as fusion partners for mSSC. Co-cultures of mSSC with MCF-10a revealed increased fusion events up to 10-fold (> 2%) compared with co-cultures with MDA-MB-231 (0.2%) or with MCF-7 (0.1%). In line with the observations that inflammation can induce cell fusion, the author stimulated the cell co-cultures with pro-inflammatory cytokine TNF- α and found significant hybrid cell formation compared to non-treated cells.

Using different cancer cell lines treated with the hypoxia mimetic cobalt chloride to induce polyploidization, Zhang *et al.*^[55] showed that the formation of PGCCs could occur either through cell-fusion or endoreplication. The cells had increased size, developed enlarged nuclei and could survive for extended periods of time, while cells with normal morphology could be selectively eliminated. The PGCCs displayed CSC markers and properties and could therefore be potentially more tumorigenic^[96].

CLINICAL SIGNIFICANCE OF CELL FUSION AND POLYPLOIDIZATION IN CANCER

PGCCs are found in most cancers and correlate to poor survival^[97-100]. Reports of mono and multinucleated cancer cells can be found in the literature dating back to the early 20th century^[101-103]. PGCCs are also described as “multi-nucleated giant cells”, “tumour budding”, “micropapillary”, and “osteoclast-like giant cells”. Across many cancer types, when present in high numbers, PGCCs of epithelial-origin show highly malignant characteristics, including chemo-resistance, with short patient survival and are designated with World Health Organization sub-classification status. These rare cancers include, giant cell carcinoma of the lung (a sub-classification of the large cell/sarcomatoid carcinomas of the lung) and pleomorphic carcinoma of the lung^[104-106]. Although rare, these cancers provide important insights into the highly malignant nature of the PGCCs. Patient survival is typically worse than in those with the non-PGCC cancer component due to poor or refractory responses to standard treatments, short relapse intervals and enhanced metastatic spread^[32,56,97,99].

PGCC formation has been demonstrated to increase during tumour progression^[55,56,99,100], as late stage cancers have elevated numbers of PGCCs. It might be predicted that through increased PGCC formation in late stage disease, increased numbers of heterotypic fusion events also occur. Recent studies on liquid biopsies show the presence of hybrid-like expression in multinucleated giant cells. This phenotype is shown to correlate with malignancy and poor survival^[66,107-109].

Several studies have shown that after standard of care treatments treatments with radiation^[33,35,110], chemotherapy^[40] or targeted therapy^[111], PGCC can be formed using

cell fusion as a mechanism. The PGCCs can overcome the treatment-induced damage and produce progeny that are resistant to treatments to which the cancer cells are normally sensitive. This has been demonstrated for both irradiation and chemotherapy and may be an important factor in disease relapse and patient outcome^[40,112-114].

PGCCs have been shown in many tumour types to be associated with increased therapy resistance and poor survival^[104,106,115]. For example, in a syngeneic rat tumour model, Puig *et al*^[116] showed that despite an initial shrinkage of tumours in response to cisplatin treatment, tumour cells enter a latent phase from which they are eventually able to escape and resume growth. These cells survived for weeks and while some eventually died, others were able to undergo a reversal of polyploidization giving rise to new colonies of diploid cells, which were more resistant to cytotoxic drugs and were responsible for tumour relapse. Additionally, a single large multinucleated cell isolated from the murine fibrosarcoma cell line UV-2237 could produce tumours in mice. These large multinucleated cells were also more resistant to doxorubicin suggesting that they could be driving the relapse^[117].

Clinical evidence of cell fusion

It has been well demonstrated that leucocyte-cancer cell fusion produces hybrid cells that express genetic and phenotypic characteristics of both maternal cells^[71,118]. Clinically, it is difficult to detect or genetically confirm fusion events because the genetic content of maternal cells and any hybrids have the same origin. The expression of tissue specific proteins by tumour cells and other fusion cell partners, like TAMs, may, however, constitute surrogate markers that could be used for detecting the presence of fusion events in tumour tissue from clinical patient material.

CD163 is a macrophage specific trans-membrane scavenger receptor and its presence indicates that the cells have an M2-macrophage phenotype^[119]. Macrophage traits in cancer cells, exemplified by CD163 expression, have been reported for several types of tumours, *e.g.*, renal cell^[120], breast^[121], colorectal^[122,123] and bladder^[124,125] cancers. Based on the cell fusion theory, the macrophage phenotype in cancer cells is suggested to be caused by fusion between TAMs and tumour cells^[71,126,127].

In an *in vitro* model, Shabo *et al*^[126] showed that cancer cells did not acquire a macrophage phenotype by paracrine interaction between macrophages and MCF-7 breast cancer cells. In contrast, macrophage/MCF-7 hybrids (generated *via* spontaneous cell fusion) expressed macrophage-like markers, CD163 and the pan-leucocyte marker CD45. The hybrids also showed genetic characteristics from both parent cells. Powel *et al*^[71,128] provided *in vivo* evidence of fusion between circulating BMDCs and cancer cells during tumorigenesis, demonstrating that macrophages were cellular partners in this process. Silk *et al*^[118] showed similar *in vivo* characteristics in human intestinal epithelium. These studies clearly support the many observations that macrophage traits in cancer cells are explained by fusion between tumour cells and TAMs^[4,67,75].

Shabo *et al*^[121] reported that CD163 expression by tumour cells in breast cancer was seen in 48% of a cohort of 133 female patients. The patients with CD163-positive tumours had reduced recurrence-free survival times. Further, CD163 expression by cancer cells was more common in advanced cancers. Epithelial cells in normal breast tissue showed no expression of CD163. In a similar study, the same research group reported CD163 expression by tumour cells in 23% of 139 patients with rectal cancer. Again, CD163 expression was not seen in any of the non-cancerous areas from adjacent or distant rectal tissue. CD163 expression by tumour cells was associated with earlier local recurrence and shorter cancer specific survival, and inversely correlated to apoptosis. Notably, the expression of CD163 by cancer cells was more common (31%) in tumours from patients treated with preoperative radiotherapy compared to those not treated (17%).

The expression of macrophage traits by cancer cells was proportional to intra-tumoural macrophage density indicating that increased recruitment and infiltration of macrophages in tumour tissue may result in higher rates of fusion between macrophages and cancer cells in tumour stroma^[122,124]. The frequency of cell fusion events *in vivo* was as high as 1% in experimental tumour models^[27]. The fusion efficiency increased proportionally to the presence of inflammation^[91] and the metastatic potential of tumour cells^[129]. Macrophage-cancer cell hybrids are generated spontaneously in cultured breast cancer cells at an average rate of 2% and are able to survive cell culture for several weeks^[126]. Del Monte demonstrated that one gram of tumour contained some 10⁸ tumour cells^[130]. Based on this calculation, a rate of 1%-2% frequency of cell fusion events means that each gram of solid tumour may contain as many as 1-2 million hybrids. Although the proportion of hybrids may be small in relation to the total tumour mass, the spontaneity of cell fusion and the survival of the hybrids may generate deadly derivative clones with important clinical implications.

Garvin *et al*^[131] calculated the proportion of cancer cells expressing CD163 in 83 patients with breast cancer and found that the number of CD163-positive cells in all breast tumors studies averaged 9% (range 0%-41%). CD163-expression of > 15% of cancer cells was associated with breast cancer-related death ($P = 0.02$). The authors also reported that the mean number of cancer cells expressing CD163 was positively associated with mitotic index supporting a connection between fusion events and the density of TAMs seen in tumours. It is likely that the plasticity of reprogrammed cellular phenotypes originating in hybrids may form both dominating as well as volatile clones in the tumour environment.

Through cell fusion cancer cells acquire new phenotypes but may also lose other traits that are specific for their tissue origin, a process known as de-differentiation. These traits are essential in the clinical assessment, *e.g.*, the estrogen receptor (ER) pathway is involved in cell growth and regulation of breast cancer cells. Moreover, estrogen is a potent breast mitogen and ER-inhibitors and estrogen-producing enzymes (aromatases) are well-established, effective therapies^[132]. ER is down-regulated in progeny cells generated by fusion between macrophages and breast cancer cells^[133]. In immuno-histochemical studies of biopsies, macrophage traits in cancer cells (indicating fusion events) was associated with ER-negative tumours^[121,131]. These observations have clinical relevance as down-regulation of ER in breast cancer cells will change the pathologic staging and the treatment options for the patients.

Cell fusion pathways as diagnostic and therapeutic targets

Clinical investigations of tumour biology with a focus on cell fusion as an underlying mechanism are limited, probably because this theory has been difficult to investigate and has not been firmly established as other topics, such as the cancer mutation theory. In light of findings on the role of cell fusion in tumour biology reported over the past 30 years, we believe that cell fusion pathways might constitute a target in cancer diagnostics and treatment. As discussed previously, cell fusion contributes to tumour progression by generating new cancer cell clones with enhanced metastatic properties. Morphologically, hybrid cells have similar appearance to their maternal cancer cells. Hence, the malignant potential of tumours might be underestimated if hybrid cells are not detected during clinical histopathological assessment. For example, Busund *et al*^[75] showed that *in vivo* tumours consisting of Metha-A sarcoma/macrophage hybrids had the similar histopathological morphology as tumours consisting of maternal Metha-A sarcoma cells. The tumours consisting of hybrid cells had however greater growth rate, metastatic ability and vascular density; tumour characteristics that have prognostic significance in a clinical context.

Consistent with *in vivo* findings, the expression of macrophage traits as surrogate marker for macrophage-cancer cell fusion^[4,71,118,134] by cancer cells in clinical tumour material is associated with advanced tumour stage and poor prognosis^[120-125,135,136], indicating the importance of identifying and validating histopathological markers, such as macrophage-specific marker CD163, to detect fusion events in clinical tumour material. Accumulating evidence suggests that cell fusion results in the development of stem cell properties and resistance to oncological treatment^[33,115,127,137-140]. Cell fusion may have a predictive value in cancer treatment and it should be verified by clinical investigations.

Cell fusion might constitute a therapy target in cancer and can be counteracted by several strategies. Tentatively, inhibition of the cell fusion process or infiltration of cancer cell fusion partners, such as macrophages, might be possible treatment targets. Inhibition of macrophage infiltration into tumour stroma might reduce the frequency of macrophage-cancer cell fusion. Macrophage depletion might also reduce other macrophage related tumour promoting mechanism such as neo-angiogenesis. Although these data are not related to macrophage-cancer cell fusion, several studies show that macrophage depletion in tumour stroma is associated with inhibition of tumour progression^[141-144]. For example, Griesmann *et al*^[145] showed in an experimental mouse model that treatment with liposomal clodronate decreased macrophage infiltration in several organs and resulted in significant reduction of liver and pulmonary metastasis of pancreatic cancer, independently of the presence of an endogenous primary tumour.

RATIONALE

Using histochemical markers along with genetic analyses it is now clear that cell fusion and hybrid formation are associated with metastasis and poor patient survival. There is an association of polyploidy, produced by leucocyte-cancer cell fusion, with therapy resistance. We may glimpse the engine that drives metastasis (Figures 1 and

2). This information opens many potential targets for the development of new therapies: (1) Inhibition of the fusion process itself regarding events such as membrane attachment and heterokaryon formation; (2) Inhibition of the hybridization processes involving integration of parental fusion partner genes into hybrid genomes; and (3) Prevention of post-hybridization events involving activation of genes that control cell migration, chemotaxis, intravasation, extravasation, and migration to lymph nodes and distant metastases.

CONCLUSION

Cell fusion is a normal biological process that is essential during embryogenesis and morphogenesis. Accumulating evidence indicates that fusion between leukocytes and cancer cells occur in solid tumors and may contribute to tumor progression. These data provide new insights into the role of leukocytes, such as macrophages, in tumor biology and cell fusion as a potential mechanism in tumor metastasis and the development of resistance to oncologic treatment.

REFERENCES

- 1 **Camargo FD**, Green R, Capetanaki Y, Jackson KA, Goodell MA. Single hematopoietic stem cells generate skeletal muscle through myeloid intermediates. *Nat Med* 2003; **9**: 1520-1527 [PMID: [14625546](#) DOI: [10.1038/nm963](#)]
- 2 **Paululat A**, Breuer S, Renkawitz-Pohl R. Determination and development of the larval muscle pattern in *Drosophila melanogaster*. *Cell Tissue Res* 1999; **296**: 151-160 [PMID: [10199975](#) DOI: [10.1007/s004410051276](#)]
- 3 **Vignery A**. Macrophage fusion: the making of osteoclasts and giant cells. *J Exp Med* 2005; **202**: 337-340 [PMID: [16061722](#) DOI: [10.1084/jem.20051123](#)]
- 4 **Rizvi AZ**, Swain JR, Davies PS, Bailey AS, Decker AD, Willenbring H, Grompe M, Fleming WH, Wong MH. Bone marrow-derived cells fuse with normal and transformed intestinal stem cells. *Proc Natl Acad Sci USA* 2006; **103**: 6321-6325 [PMID: [16606845](#) DOI: [10.1073/pnas.0508593103](#)]
- 5 **Vassilopoulos G**, Wang PR, Russell DW. Transplanted bone marrow regenerates liver by cell fusion. *Nature* 2003; **422**: 901-904 [PMID: [12665833](#) DOI: [10.1038/nature01539](#)]
- 6 **Nygren JM**, Jovinge S, Breitbach M, Sävén P, Röhl W, Hescheler J, Taneera J, Fleischmann BK, Jacobsen SE. Bone marrow-derived hematopoietic cells generate cardiomyocytes at a low frequency through cell fusion, but not transdifferentiation. *Nat Med* 2004; **10**: 494-501 [PMID: [15107841](#) DOI: [10.1038/nm1040](#)]
- 7 **Alvarez-Dolado M**, Pardo R, Garcia-Verdugo JM, Fike JR, Lee HO, Pfeffer K, Lois C, Morrison SJ, Alvarez-Buylla A. Fusion of bone-marrow-derived cells with Purkinje neurons, cardiomyocytes and hepatocytes. *Nature* 2003; **425**: 968-973 [PMID: [14555960](#) DOI: [10.1038/nature02069](#)]
- 8 **Terada N**, Hamazaki T, Oka M, Hoki M, Mastalerz DM, Nakano Y, Meyer EM, Morel L, Petersen BE, Scott EW. Bone marrow cells adopt the phenotype of other cells by spontaneous cell fusion. *Nature* 2002; **416**: 542-545 [PMID: [11932747](#) DOI: [10.1038/nature730](#)]
- 9 **Pereira CF**, Terranova R, Ryan NK, Santos J, Morris KJ, Cui W, Merkenschlager M, Fisher AG. Heterokaryon-based reprogramming of human B lymphocytes for pluripotency requires Oct4 but not Sox2. *PLoS Genet* 2008; **4**: e1000170 [PMID: [18773085](#) DOI: [10.1371/journal.pgen.1000170](#)]
- 10 **Piccolo FM**, Pereira CF, Cantone I, Brown K, Tsubouchi T, Soza-Ried J, Merkenschlager M, Fisher AG. Using heterokaryons to understand pluripotency and reprogramming. *Philos Trans R Soc Lond B Biol Sci* 2011; **366**: 2260-2265 [PMID: [21727131](#) DOI: [10.1098/rstb.2011.0004](#)]
- 11 **Mortensen K**, Lichtenberg J, Thomsen PD, Larsson LI. Spontaneous fusion between cancer cells and endothelial cells. *Cell Mol Life Sci* 2004; **61**: 2125-2131 [PMID: [15316661](#) DOI: [10.1007/s00018-004-4200-2](#)]
- 12 **Vassilopoulos G**, Russell DW. Cell fusion: an alternative to stem cell plasticity and its therapeutic implications. *Curr Opin Genet Dev* 2003; **13**: 480-485 [PMID: [14550412](#) DOI: [10.1016/s0959-437x\(03\)00110-2](#)]
- 13 **Wong C**, Stearns T. Centrosome number is controlled by a centrosome-intrinsic block to reduplication. *Nat Cell Biol* 2003; **5**: 539-544 [PMID: [12766773](#) DOI: [10.1038/ncb993](#)]
- 14 **Larizza L**, Schirrmacher V, Pflüger E. Acquisition of high metastatic capacity after in vitro fusion of a nonmetastatic tumor line with a bone marrow-derived macrophage. *J Exp Med* 1984; **160**: 1579-1584 [PMID: [6491605](#) DOI: [10.1084/jem.160.5.1579](#)]
- 15 **Ogle BM**, Cascalho M, Platt JL. Biological implications of cell fusion. *Nat Rev Mol Cell Biol* 2005; **6**: 567-575 [PMID: [15957005](#) DOI: [10.1038/nrm1678](#)]
- 16 **Losick VP**, Fox DT, Spradling AC. Polyploidization and cell fusion contribute to wound healing in the adult *Drosophila* epithelium. *Curr Biol* 2013; **23**: 2224-2232 [PMID: [24184101](#) DOI: [10.1016/j.cub.2013.09.029](#)]
- 17 **Tamori Y**, Deng WM. Tissue repair through cell competition and compensatory cellular hypertrophy in postmitotic epithelia. *Dev Cell* 2013; **25**: 350-363 [PMID: [23685249](#) DOI: [10.1016/j.devcel.2013.04.013](#)]
- 18 **Raslova H**, Kauffmann A, Sekkaï D, Ripoche H, Larbret F, Robert T, Tronik Le Roux D, Kroemer G, Debili N, Dessen P, Lazar V, Vainchenker W. Interrelation between polyploidization and megakaryocyte differentiation: a gene profiling approach. *Blood* 2007; **109**: 3225-3234 [PMID: [17170127](#) DOI: [10.1182/blood-2006-07-037838](#)]
- 19 **Li Z**, Lu X, Gao Y, Liu S, Tao M, Xiao H, Qiao Y, Zhang Y and Luo J. Polyploidization and epigenetics. *Chinese Science Bulletin* 2011; **56**: 245-252 [DOI: [10.1007/s11434-010-4290-1](#)]
- 20 **Miyamoto T**. Regulators of osteoclast differentiation and cell-cell fusion. *Keio J Med* 2011; **60**: 101-105 [PMID: [22200633](#) DOI: [10.2302/kjm.60.101](#)]

- 21 **Orr-Weaver TL.** When bigger is better: the role of polyploidy in organogenesis. *Trends Genet* 2015; **31**: 307-315 [PMID: [25921783](#) DOI: [10.1016/j.tig.2015.03.011](#)]
- 22 **Duncan AW, Hickey RD, Paulk NK, Culbertson AJ, Olson SB, Finegold MJ, Grompe M.** Ploidy reductions in murine fusion-derived hepatocytes. *PLoS Genet* 2009; **5**: e1000385 [PMID: [19229314](#) DOI: [10.1371/journal.pgen.1000385](#)]
- 23 **Willenbring H, Bailey AS, Foster M, Akkari Y, Dorrell C, Olson S, Finegold M, Fleming WH, Grompe M.** Myelomonocytic cells are sufficient for therapeutic cell fusion in liver. *Nat Med* 2004; **10**: 744-748 [PMID: [15195088](#) DOI: [10.1038/nm1062](#)]
- 24 **Wang X, Willenbring H, Akkari Y, Torimaru Y, Foster M, Al-Dhalimy M, Lagasse E, Finegold M, Olson S, Grompe M.** Cell fusion is the principal source of bone-marrow-derived hepatocytes. *Nature* 2003; **422**: 897-901 [PMID: [12665832](#) DOI: [10.1038/nature01531](#)]
- 25 **Anatskaya OV, Vinogradov AE.** Genome multiplication as adaptation to tissue survival: evidence from gene expression in mammalian heart and liver. *Genomics* 2007; **89**: 70-80 [PMID: [17029690](#) DOI: [10.1016/j.ygeno.2006.08.014](#)]
- 26 **Pawelek JM, Chakraborty AK.** Fusion of tumour cells with bone marrow-derived cells: a unifying explanation for metastasis. *Nat Rev Cancer* 2008; **8**: 377-386 [PMID: [18385683](#) DOI: [10.1038/nrc2371](#)]
- 27 **Duelli D, Lazebnik Y.** Cell fusion: a hidden enemy? *Cancer Cell* 2003; **3**: 445-448 [PMID: [12781362](#) DOI: [10.1016/s1535-6108\(03\)00114-4](#)]
- 28 **Yang JY, Ha SA, Yang YS, Kim JW.** p-Glycoprotein ABCB5 and YB-1 expression plays a role in increased heterogeneity of breast cancer cells: correlations with cell fusion and doxorubicin resistance. *BMC Cancer* 2010; **10**: 388 [PMID: [20649952](#) DOI: [10.1186/1471-2407-10-388](#)]
- 29 **Ozel C, Seidel J, Meyer-Staeckling S, Brandt BH, Niggemann B, Zänker KS, Dittmar T.** Hybrid cells derived from breast epithelial cell/breast cancer cell fusion events show a differential RAF-AKT crosstalk. *Cell Commun Signal* 2012; **10**: 10 [PMID: [22487193](#) DOI: [10.1186/1478-811X-10-10](#)]
- 30 **Wang R, Chen S, Li C, Ng KT, Kong CW, Cheng J, Cheng SH, Li RA, Lo CM, Man K, Sun D.** Fusion with stem cell makes the hepatocellular carcinoma cells similar to liver tumor-initiating cells. *BMC Cancer* 2016; **16**: 56 [PMID: [26846780](#) DOI: [10.1186/s12885-016-2094-7](#)]
- 31 **Wakeling WF, Greetham J, Bennett DC.** Efficient spontaneous fusion between some co-cultured cells, especially murine melanoma cells. *Cell Biol Int* 1994; **18**: 207-210 [PMID: [8019495](#) DOI: [10.1006/cbir.1994.1063](#)]
- 32 **Lv H, Shi Y, Zhang L, Zhang D, Liu G, Yang Z, Li Y, Fei F, Zhang S.** Polyploid giant cancer cells with budding and the expression of cyclin E, S-phase kinase-associated protein 2, stathmin associated with the grading and metastasis in serous ovarian tumor. *BMC Cancer* 2014; **14**: 576 [PMID: [25106448](#) DOI: [10.1186/1471-2407-14-576](#)]
- 33 **Kaur E, Rajendra J, Jadhav S, Shridhar E, Goda JS, Moiyadi A, Dutt S.** Radiation-induced homotypic cell fusions of innately resistant glioblastoma cells mediate their sustained survival and recurrence. *Carcinogenesis* 2015; **36**: 685-695 [PMID: [25863126](#) DOI: [10.1093/carcin/bgv050](#)]
- 34 **Nygren JM, Liuba K, Breitbach M, Stott S, Thorén L, Roell W, Geisen C, Sasse P, Kirik D, Björklund A, Nerlov C, Fleischmann BK, Jovinge S, Jacobsen SE.** Myeloid and lymphoid contribution to non-haematopoietic lineages through irradiation-induced heterotypic cell fusion. *Nat Cell Biol* 2008; **10**: 584-592 [PMID: [18425115](#) DOI: [10.1038/ncb1721](#)]
- 35 **Illidge TM, Cragg MS, Fringes B, Olive P, Erenpreisa JA.** Polyploid giant cells provide a survival mechanism for p53 mutant cells after DNA damage. *Cell Biol Int* 2000; **24**: 621-633 [PMID: [10964452](#) DOI: [10.1006/cbir.2000.0557](#)]
- 36 **Erenpreisa J, Ivanov A, Wheatley SP, Kosmacek EA, Ianzini F, Anisimov AP, Mackey M, Davis PJ, Plakhins G, Illidge TM.** Endopolyploidy in irradiated p53-deficient tumour cell lines: persistence of cell division activity in giant cells expressing Aurora-B kinase. *Cell Biol Int* 2008; **32**: 1044-1056 [PMID: [18602486](#) DOI: [10.1016/j.cellbi.2008.06.003](#)]
- 37 **Weaver BA, Cleveland DW.** Does aneuploidy cause cancer? *Curr Opin Cell Biol* 2006; **18**: 658-667 [PMID: [17046232](#) DOI: [10.1016/j.ceb.2006.10.002](#)]
- 38 **Duesberg P, McCormack A.** Immortality of cancers: a consequence of inherent karyotypic variations and selections for autonomy. *Cell Cycle* 2013; **12**: 783-802 [PMID: [23388461](#) DOI: [10.4161/cc.23720](#)]
- 39 **Liu J.** The dualistic origin of human tumors. *Semin Cancer Biol* 2018; **53**: 1-16 [PMID: [30040989](#) DOI: [10.1016/j.semcancer.2018.07.004](#)]
- 40 **Mittal K, Donthamsetty S, Kaur R, Yang C, Gupta MV, Reid MD, Choi DH, Rida PCG, Aneja R.** Multinucleated polyploidy drives resistance to Docetaxel chemotherapy in prostate cancer. *Br J Cancer* 2017; **116**: 1186-1194 [PMID: [28334734](#) DOI: [10.1038/bjc.2017.78](#)]
- 41 **Nigg EA.** Centrosome aberrations: cause or consequence of cancer progression? *Nat Rev Cancer* 2002; **2**: 815-825 [PMID: [12415252](#) DOI: [10.1038/nrc924](#)]
- 42 **Bu Y, Cao D.** The origin of cancer stem cells. *Front Biosci (Schol Ed)* 2012; **4**: 819-830 [PMID: [22202093](#) DOI: [10.2741/s302](#)]
- 43 **LaBarge MA.** The difficulty of targeting cancer stem cell niches. *Clin Cancer Res* 2010; **16**: 3121-3129 [PMID: [20530700](#) DOI: [10.1158/1078-0432.CCR-09-2933](#)]
- 44 **Singh AK, Arya RK, Maheshwari S, Singh A, Meena S, Pandey P, Dormond O, Datta D.** Tumor heterogeneity and cancer stem cell paradigm: updates in concept, controversies and clinical relevance. *Int J Cancer* 2015; **136**: 1991-2000 [PMID: [24615680](#) DOI: [10.1002/ijc.28804](#)]
- 45 **Gauck D, Keil S, Niggemann B, Zänker KS, Dittmar T.** Hybrid clone cells derived from human breast epithelial cells and human breast cancer cells exhibit properties of cancer stem/initiating cells. *BMC Cancer* 2017; **17**: 515 [PMID: [28768501](#) DOI: [10.1186/s12885-017-3509-9](#)]
- 46 **Flasza M, Shering AF, Smith K, Andrews PW, Talley P, Johnson PA.** Reprogramming in inter-species embryonal carcinoma-somatic cell hybrids induces expression of pluripotency and differentiation markers. *Cloning Stem Cells* 2003; **5**: 339-354 [PMID: [14733752](#) DOI: [10.1089/153623003772032844](#)]
- 47 **Zhang LN, Kong CF, Zhao D, Cong XL, Wang SS, Ma L, Huang YH.** Fusion with mesenchymal stem cells differentially affects tumorigenic and metastatic abilities of lung cancer cells. *J Cell Physiol* 2019; **234**: 3570-3582 [PMID: [30417342](#) DOI: [10.1002/jcp.27011](#)]
- 48 **Duelli D, Lazebnik Y.** Cell-to-cell fusion as a link between viruses and cancer. *Nat Rev Cancer* 2007; **7**: 968-976 [PMID: [18034186](#) DOI: [10.1038/nrc2272](#)]
- 49 **Gast CE, Silk AD, Zarour L, Riegler L, Burkhart JG, Gustafson KT, Parappilly MS, Roh-Johnson M, Goodman JR, Olson B, Schmidt M, Swain JR, Davies PS, Shastri V, Iizuka S, Flynn P, Watson S, Korkola J, Courtneidge SA, Fischer JM, Jaboin J, Billingsley KG, Lopez CD, Burchard J, Gray J, Coussens LM, Sheppard BC, Wong MH.** Cell fusion potentiates tumor heterogeneity and reveals

- circulating hybrid cells that correlate with stage and survival. *Sci Adv* 2018; **4**: eaat7828 [PMID: 30214939 DOI: 10.1126/sciadv.aat7828]
- 50 **Kloosterman WP**, Hoogstraat M, Paling O, Tavakoli-Yaraki M, Renkens I, Vermaat JS, van Roosmalen MJ, van Lieshout S, Nijman IJ, Roessingh W, van 't Slot R, van de Belt J, Guryev V, Koudijs M, Voest E, Cuppen E. Chromothripsis is a common mechanism driving genomic rearrangements in primary and metastatic colorectal cancer. *Genome Biol* 2011; **12**: R103 [PMID: 22014273 DOI: 10.1186/gb-2011-12-10-r103]
 - 51 **Stephens PJ**, Greenman CD, Fu B, Yang F, Bignell GR, Mudie LJ, Pleasance ED, Lau KW, Beare D, Stebbings LA, McLaren S, Lin ML, McBride DJ, Varela I, Nik-Zainal S, Leroy C, Jia M, Menzies A, Butler AP, Teague JW, Quail MA, Burton J, Swerdlow H, Carter NP, Morsberger LA, Iacobuzio-Donahue C, Follows GA, Green AR, Flanagan AM, Stratton MR, Futreal PA, Campbell PJ. Massive genomic rearrangement acquired in a single catastrophic event during cancer development. *Cell* 2011; **144**: 27-40 [PMID: 21215367 DOI: 10.1016/j.cell.2010.11.055]
 - 52 **Morishita M**, Muramatsu T, Suto Y, Hirai M, Konishi T, Hayashi S, Shigemizu D, Tsunoda T, Moriyama K, Inazawa J. Chromothripsis-like chromosomal rearrangements induced by ionizing radiation using proton microbeam irradiation system. *Oncotarget* 2016; **7**: 10182-10192 [PMID: 26862731 DOI: 10.18632/oncotarget.7186]
 - 53 **Searles SC**, Santosa EK, Bui JD. Cell-cell fusion as a mechanism of DNA exchange in cancer. *Oncotarget* 2018; **9**: 6156-6173 [PMID: 29464062 DOI: 10.18632/oncotarget.23715]
 - 54 **Xu MH**, Gao X, Luo D, Zhou XD, Xiong W, Liu GX. EMT and acquisition of stem cell-like properties are involved in spontaneous formation of tumorigenic hybrids between lung cancer and bone marrow-derived mesenchymal stem cells. *PLoS One* 2014; **9**: e87893 [PMID: 24516569 DOI: 10.1371/journal.pone.0087893]
 - 55 **Zhang S**, Mercado-Urbe I, Xing Xing Z, Sun B, Kuang J, Liu J. Generation of cancer stem-like cells through the formation of polyploid giant cancer cells. *Oncogene* 33 (1): 116-128 [PMID: 23524583 DOI: 10.1038/onc.2013.96]
 - 56 **Fei F**, Zhang D, Yang Z, Wang S, Wang X, Wu Z, Wu Q, Zhang S. The number of polyploid giant cancer cells and epithelial-mesenchymal transition-related proteins are associated with invasion and metastasis in human breast cancer. *J Exp Clin Cancer Res* 2015; **34**: 158 [PMID: 26702618 DOI: 10.1186/s13046-015-0277-8]
 - 57 **Roh M**, van der Meer R, Abdulkadir SA. Tumorigenic polyploid cells contain elevated ROS and ARE selectively targeted by antioxidant treatment. *J Cell Physiol* 2012; **227**: 801-812 [PMID: 21503880 DOI: 10.1002/jcp.22793]
 - 58 **Gorla GR**, Malhi H, Gupta S. Polyploidy associated with oxidative injury attenuates proliferative potential of cells. *J Cell Sci* 2001; **114** (Pt 16): 2943-2951 [PMID: 11686298]
 - 59 **Balvan J**, Gumulec J, Raudenska M, Krizova A, Stepka P, Babula P, Kizek R, Adam V, Masarik M. Oxidative Stress Resistance in Metastatic Prostate Cancer: Renewal by Self-Eating. *PLoS One* 2015; **10**: e0145016 [PMID: 26671576 DOI: 10.1371/journal.pone.0145016]
 - 60 **Zekri A**, Mesbahi Y, Ghanizadeh-Vesali S, Alimoghaddam K, Ghavamzadeh A, Ghaffari SH. Reactive oxygen species generation and increase in mitochondrial copy number: new insight into the potential mechanism of cytotoxicity induced by aurora kinase inhibitor, AZD1152-HQPA. *Anticancer Drugs* 2017; **28**: 841-851 [PMID: 28639950 DOI: 10.1097/CAD.0000000000000523]
 - 61 **Liou GY**, Döppler H, DelGiorno KE, Zhang L, Leitges M, Crawford HC, Murphy MP, Storz P. Mutant KRas-Induced Mitochondrial Oxidative Stress in Acinar Cells Upregulates EGFR Signaling to Drive Formation of Pancreatic Precancerous Lesions. *Cell Rep* 2016; **14**: 2325-2336 [PMID: 26947075 DOI: 10.1016/j.celrep.2016.02.029]
 - 62 **Espejel S**, Romero R, Alvarez-Buylla A. Radiation damage increases Purkinje neuron heterokaryons in neonatal cerebellum. *Ann Neurol* 2009; **66**: 100-109 [PMID: 19670439 DOI: 10.1002/ana.21670]
 - 63 **Adams DL**, Stefansson S, Haudenschild C, Martin SS, Charpentier M, Chumsri S, Cristofanilli M, Tang CM, Alpaugh RK. Cytometric characterization of circulating tumor cells captured by microfiltration and their correlation to the CellSearch® CTC test. *Cytometry A* 2015; **87**: 137-144 [PMID: 25515318 DOI: 10.1002/cyto.a.22613]
 - 64 **Adams DL**, Zhu P, Makarova OV, Martin SS, Charpentier M, Chumsri S, Li S, Amstutz P, Tang CM. The systematic study of circulating tumor cell isolation using lithographic microfilters. *RSC Adv* 2014; **9**: 4334-4342 [PMID: 25614802 DOI: 10.1039/C3RA46839A]
 - 65 **Adams DL**, Adams DK, Stefansson S, Haudenschild C, Martin SS, Charpentier M, Chumsri S, Cristofanilli M, Tang CM, Alpaugh RK. Mitosis in circulating tumor cells stratifies highly aggressive breast carcinomas. *Breast Cancer Res* 2016; **18**: 44 [PMID: 27142282 DOI: 10.1186/s13058-016-0706-4]
 - 66 **Adams DL**, Adams DK, Alpaugh RK, Cristofanilli M, Martin SS, Chumsri S, Tang CM, Marks JR. Circulating Cancer-Associated Macrophage-Like Cells Differentiate Malignant Breast Cancer and Benign Breast Conditions. *Cancer Epidemiol Biomarkers Prev* 2016; **25**: 1037-1042 [PMID: 27197300 DOI: 10.1158/1055-9965.EPI-15-1221]
 - 67 **Busund LT**, Killie MK, Bartnes K, Seljelid R. Spontaneously formed tumorigenic hybrids of Meth A sarcoma cells and macrophages in vivo. *Int J Cancer* 2003; **106**: 153-159 [PMID: 12800188 DOI: 10.1002/ijc.11210]
 - 68 **Zhang LN**, Huang YH, Zhao L. Fusion of macrophages promotes breast cancer cell proliferation, migration and invasion through activating epithelial-mesenchymal transition and Wnt/ β -catenin signaling pathway. *Arch Biochem Biophys* 2019; **676**: 108137 [PMID: 31605677 DOI: 10.1016/j.abb.2019.108137]
 - 69 **Pawelek JM**, Chakraborty AK. The cancer cell-leukocyte fusion theory of metastasis. *Adv Cancer Res* 2008; **101**: 397-444 [PMID: 19055949 DOI: 10.1016/S0065-230X(08)00410-7]
 - 70 **De Baetselier P**, Roos E, Brys L, Remels L, Gobert M, Dekegel D, Segal S, Feldman M. Nonmetastatic tumor cells acquire metastatic properties following somatic hybridization with normal cells. *Cancer Metastasis Rev* 1984; **3**: 5-24 [PMID: 6370419 DOI: 10.1007/bf00047690]
 - 71 **Powell AE**, Anderson EC, Davies PS, Silk AD, Pelz C, Impey S, Wong MH. Fusion between Intestinal epithelial cells and macrophages in a cancer context results in nuclear reprogramming. *Cancer Res* 2011; **71**: 1497-1505 [PMID: 21303980 DOI: 10.1158/0008-5472.CAN-10-3223]
 - 72 **Rachkovsky M**, Sodi S, Chakraborty A, Avissar Y, Bolognia J, McNiff JM, Platt J, Bermudes D, Pawelek J. Melanoma x macrophage hybrids with enhanced metastatic potential. *Clin Exp Metastasis* 1998; **16**: 299-312 [PMID: 9626809 DOI: 10.1023/a:1006557228604]
 - 73 **Rappa G**, Mercapide J, Lorico A. Spontaneous formation of tumorigenic hybrids between breast cancer and multipotent stromal cells is a source of tumor heterogeneity. *Am J Pathol* 2012; **180**: 2504-2515

- [PMID: 22542847 DOI: 10.1016/j.ajpath.2012.02.020]
- 74 **Shen Z**, Gu X, Mao W, Cao H, Zhang R, Zhou Y, Liu K, Wang L, Zhang Z, Yin L. Dendritic cells fused with endothelial progenitor cells play immunosuppressive effects on angiogenesis in acute myeloid leukemia mice. *Am J Transl Res* 2019; **11**: 2816-2829 [PMID: 31217856]
 - 75 **Busund LT**, Killie MK, Bartnes K, Seljelid R. Spontaneously formed tumorigenic hybrids of Meth A sarcoma and macrophages grow faster and are better vascularized than the parental tumor. *Int J Cancer* 2002; **100**: 407-413 [PMID: 12115521 DOI: 10.1002/ijc.10502]
 - 76 **Kerjaschki D**, Huttary N, Raab I, Regele H, Bojarski-Nagy K, Bartel G, Kröber SM, Greinix H, Rosenmaier A, Karlhofer F, Wick N, Mazal PR. Lymphatic endothelial progenitor cells contribute to de novo lymphangiogenesis in human renal transplants. *Nat Med* 2006; **12**: 230-234 [PMID: 16415878 DOI: 10.1038/nm1340]
 - 77 **Kerjaschki D**. The crucial role of macrophages in lymphangiogenesis. *J Clin Invest* 2005; **115**: 2316-2319 [PMID: 16138185 DOI: 10.1172/JCI26354]
 - 78 **Kurahara H**, Takao S, Maemura K, Mataka Y, Kuwahata T, Maeda K, Sakoda M, Iino S, Ishigami S, Ueno S, Shinci H, Natsugoe S. M2-polarized tumor-associated macrophage infiltration of regional lymph nodes is associated with nodal lymphangiogenesis and occult nodal involvement in pN0 pancreatic cancer. *Pancreas* 2013; **42**: 155-159 [PMID: 22699204 DOI: 10.1097/MPA.0b013e318254f2d1]
 - 79 **Mantovani A**, Sozzani S, Locati M, Allavena P, Sica A. Macrophage polarization: tumor-associated macrophages as a paradigm for polarized M2 mononuclear phagocytes. *Trends Immunol* 2002; **23**: 549-555 [PMID: 12401408 DOI: 10.1016/s1471-4906(02)02302-5]
 - 80 **Condeelis J**, Pollard JW. Macrophages: obligate partners for tumor cell migration, invasion, and metastasis. *Cell* 2006; **124**: 263-266 [PMID: 16439202 DOI: 10.1016/j.cell.2006.01.007]
 - 81 **Lin EY**, Li JF, Gnatovskiy L, Deng Y, Zhu L, Grzesik DA, Qian H, Xue XN, Pollard JW. Macrophages regulate the angiogenic switch in a mouse model of breast cancer. *Cancer Res* 2006; **66**: 11238-11246 [PMID: 17114237 DOI: 10.1158/0008-5472.CAN-06-1278]
 - 82 **Lin EY**, Pollard JW. Tumor-associated macrophages press the angiogenic switch in breast cancer. *Cancer Res* 2007; **67**: 5064-5066 [PMID: 17545580 DOI: 10.1158/0008-5472.CAN-07-0912]
 - 83 **Pollard JW**. Tumour-educated macrophages promote tumour progression and metastasis. *Nat Rev Cancer* 2004; **4**: 71-78 [PMID: 14708027 DOI: 10.1038/nrc1256]
 - 84 **Cecconi O**, Calorini L, Mannini A, Mugnai G, Ruggieri S. Enhancement of lung-colonizing potential of murine tumor cell lines co-cultivated with activated macrophages. *Clin Exp Metastasis* 1997; **15**: 94-101 [PMID: 9062385 DOI: 10.1023/a:1018440508189]
 - 85 **Oosterling SJ**, van der Bij GJ, Meijer GA, Tuk CW, van Garderen E, van Rooijen N, Meijer S, van der Sijp JR, Beelen RH, van Egmond M. Macrophages direct tumour histology and clinical outcome in a colon cancer model. *J Pathol* 2005; **207**: 147-155 [PMID: 16104052 DOI: 10.1002/path.1830]
 - 86 **Miselis NR**, Wu ZJ, Van Rooijen N, Kane AB. Targeting tumor-associated macrophages in an orthotopic murine model of diffuse malignant mesothelioma. *Mol Cancer Ther* 2008; **7**: 788-799 [PMID: 18375821 DOI: 10.1158/1535-7163.MCT-07-0579]
 - 87 **Bingle L**, Brown NJ, Lewis CE. The role of tumour-associated macrophages in tumour progression: implications for new anticancer therapies. *J Pathol* 2002; **196**: 254-265 [PMID: 11857487 DOI: 10.1002/path.1027]
 - 88 **Tan SY**, Fan Y, Luo HS, Shen ZX, Guo Y, Zhao LJ. Prognostic significance of cell infiltrations of immunosurveillance in colorectal cancer. *World J Gastroenterol* 2005; **11**: 1210-1214 [PMID: 15754407 DOI: 10.3748/wjg.v11.i8.1210]
 - 89 **Lackner C**, Jukic Z, Tsybrovskyy O, Jatzko G, Wette V, Hoefler G, Klimpfinger M, Denk H, Zatloukal K. Prognostic relevance of tumour-associated macrophages and von Willibrand factor-positive microvessels in colorectal cancer. *Virchows Arch* 2004; **445**: 160-167 [PMID: 15232739 DOI: 10.1007/s00428-004-1051-z]
 - 90 **Sundar SS**, Ganesan TS. Role of lymphangiogenesis in cancer. *J Clin Oncol* 2007; **25**: 4298-4307 [PMID: 17878481 DOI: 10.1200/JCO.2006.07.1092]
 - 91 **Johansson CB**, Youssef S, Koleckar K, Holbrook C, Doyonnas R, Corbel SY, Steinman L, Rossi FM, Blau HM. Extensive fusion of haematopoietic cells with Purkinje neurons in response to chronic inflammation. *Nat Cell Biol* 2008; **10**: 575-583 [PMID: 18425116 DOI: 10.1038/ncb1720]
 - 92 **Tavaluc RT**, Hart LS, Dicker DT, El-Deiry WS. Effects of low confluency, serum starvation and hypoxia on the side population of cancer cell lines. *Cell Cycle* 2007; **6**: 2554-2562 [PMID: 17912032 DOI: 10.4161/cc.6.20.4911]
 - 93 **Mohyeldin A**, Garzón-Muvdi T, Quiñones-Hinojosa A. Oxygen in stem cell biology: a critical component of the stem cell niche. *Cell Stem Cell* 2010; **7**: 150-161 [PMID: 20682444 DOI: 10.1016/j.stem.2010.07.007]
 - 94 **Noubissi FK**, Harkness T, Alexander CM, Ogle BM. Apoptosis-induced cancer cell fusion: a mechanism of breast cancer metastasis. *FASEB J* 2015; **29**: 4036-4045 [PMID: 26085132 DOI: 10.1096/fj.15-271098]
 - 95 **Melzer C**, von der Ohe J, Hass R. In Vitro Fusion of Normal and Neoplastic Breast Epithelial Cells with Human Mesenchymal Stroma/Stem Cells Partially Involves Tumor Necrosis Factor Receptor Signaling. *Stem Cells* 2018; **36**: 977-989 [PMID: 29569804 DOI: 10.1002/stem.2819]
 - 96 **Lopez-Sánchez LM**, Jimenez C, Valverde A, Hernandez V, Peñarando J, Martinez A, Lopez-Pedraza C, Muñoz-Castañeda JR, De la Haba-Rodríguez JR, Aranda E, Rodríguez-Ariza A. CoCl₂, a mimic of hypoxia, induces formation of polyploid giant cells with stem characteristics in colon cancer. *PLoS One* 2014; **9**: e99143 [PMID: 24932611 DOI: 10.1371/journal.pone.0099143]
 - 97 **Zhang Y**, Ilasslan H, Bauer TW. Giant cell tumor of bone: imaging and histology changes after denosumab treatment: Comment on: von Borstel D, Taguibao RA, Strle NA, Burns JE. Giant cell tumor of the bone: Aggressive case initially treated with denosumab and intralesional surgery. *Skeletal Radiol* 2017; **46**: 961-962 [PMID: 28389819 DOI: 10.1007/s00256-017-2643-4]
 - 98 **Gentric G**, Desdouets C. Polyploidization in liver tissue. *Am J Pathol* 2014; **184**: 322-331 [PMID: 24140012 DOI: 10.1016/j.ajpath.2013.06.035]
 - 99 **Qu Y**, Zhang L, Rong Z, He T, Zhang S. Number of glioma polyploid giant cancer cells (PGCCs) associated with vasculogenic mimicry formation and tumor grade in human glioma. *J Exp Clin Cancer Res* 2013; **32**: 75 [PMID: 24422894 DOI: 10.1186/1756-9966-32-75]
 - 100 **Lewis JS**, Scantlebury JB, Luo J, Thorstad WL. Tumor cell anaplasia and multinucleation are predictors of disease recurrence in oropharyngeal squamous cell carcinoma, including among just the human papillomavirus-related cancers. *Am J Surg Pathol* 2012; **36**: 1036-1046 [PMID: 22743286 DOI: 10.1097/PAS.0b013e3182583678]

- 101 **Deangelis CE**, Zarrow E, Sochan O. Giant cell carcinoma of the lung. Report of a case. *Am Pract Dig Treat* 1961; **12**: 663-666 [PMID: [13720969](#)]
- 102 **Nash AD**, Stout AP. Giant cell carcinoma of the lung; report of 5 cases. *Cancer* 1958; **11**: 369-376 [PMID: [13511359](#) DOI: [10.1002/1097-0142\(195803/04\)11:2<369::aid-cnrcr2820110222>3.0.co;2-8](#)]
- 103 **Ozzello L**, Stout AP. The epithelial origin of giant cell carcinoma of the lung confirmed by tissue culture. Report of a case. *Cancer* 1961; **14**: 1052-1056 [PMID: [13731858](#) DOI: [10.1002/1097-0142\(196109/10\)14:5<1052::aid-cnrcr2820140521>3.0.co;2-d](#)]
- 104 **Leske H**, Brandal P, Rushing EJ, Niehusmann P. IDH-mutant giant cell glioblastoma: A neglected tumor variant? *Clin Neuropathol* 2017; **36**: 293-295 [PMID: [29035191](#) DOI: [10.5414/NP301054](#)]
- 105 **Weng SS**, Cao Y, Tang XJ, Zhu LZ, Tan YN, Dong CX, Chen JQ, Shen H, Yuan Y. Epidemiological features of lung giant cell carcinoma and therapy for patients with EGFR mutations based on case reports and the surveillance, epidemiology, and end results (SEER) database. *Oncotarget* 2017; **8**: 25323-25333 [PMID: [28445978](#) DOI: [10.18632/oncotarget.15831](#)]
- 106 **Branca G**, Barresi V, Ieni A, Irato E, Caruso RA. Pleomorphic Carcinoma of the Colon: Morphological and Immunohistochemical Findings. *Case Rep Gastroenterol* 2016; **10**: 233-240 [PMID: [27462191](#) DOI: [10.1159/000446577](#)]
- 107 **Adams DL**, Martin SS, Alpaugh RK, Charpentier M, Tsai S, Bergan RC, Ogden IM, Catalona W, Chumsri S, Tang CM, Cristofanilli M. Circulating giant macrophages as a potential biomarker of solid tumors. *Proc Natl Acad Sci USA* 2014; **111**: 3514-3519 [PMID: [24550495](#) DOI: [10.1073/pnas.1320198111](#)]
- 108 **Clawson GA**, Matters GL, Xin P, Imamura-Kawasawa Y, Du Z, Thiboutot DM, Helm KF, Neves RI, Abraham T. Macrophage-tumor cell fusions from peripheral blood of melanoma patients. *PLoS One* 2015; **10**: e0134320 [PMID: [26267609](#) DOI: [10.1371/journal.pone.0134320](#)]
- 109 **Clawson GA**, Matters GL, Xin P, McGovern C, Wafula E, dePamphilis C, Meckley M, Wong J, Stewart L, D'Jamoos C, Altman N, Imamura Kawasawa Y, Du Z, Honaas L, Abraham T. "Stealth dissemination" of macrophage-tumor cell fusions cultured from blood of patients with pancreatic ductal adenocarcinoma. *PLoS One* 2017; **12**: e0184451 [PMID: [28957348](#) DOI: [10.1371/journal.pone.0184451](#)]
- 110 **Illidge TM**, Cragg MS, Fringes B, Olive P, Erenpreisa JA. Polyploid giant cells provide a survival mechanism for p53 mutant cells after DNA damage. *Cell Biol Int* 2000; **24(9)**: 621-633 [PMID: [10964452](#) DOI: [10.1006/cbir.2000.0557](#)]
- 111 **Schoonen PM**, Talens F, Stok C, Gogola E, Heijink AM, Bouwman P, Fojier F, Tarsounas M, Blatter S, Jonkers J, Rottenberg S, van Vugt MATM. Progression through mitosis promotes PARP inhibitor-induced cytotoxicity in homologous recombination-deficient cancer cells. *Nat Commun* 2017; **8**: 15981 [PMID: [28714471](#) DOI: [10.1038/ncomms15981](#)]
- 112 **Erenpreisa J**, Cragg MS, Anisimov AP, Illidge TM. Tumor cell embryonicity and the ploidy number 32n: is it a developmental checkpoint? *Cell Cycle* 2011; **10**: 1873-1874 [PMID: [21519193](#) DOI: [10.4161/cc.10.11.15755](#)]
- 113 **Ivanov A**, Cragg MS, Erenpreisa J, Emzish D, Lukman H, Illidge TM. Endopolyploid cells produced after severe genotoxic damage have the potential to repair DNA double strand breaks. *J Cell Sci* 2016 (Pt 20): 4095-4106 [PMID: [12953071](#) DOI: [10.1242/jcs.00740](#)]
- 114 **Erenpreisa JA**, Cragg MS, Fringes B, Sharakhov I, Illidge TM. Release of mitotic descendants by giant cells from irradiated Burkitt's lymphoma cell line. *Cell Biol Int* 2000; **24(9)**: 635-648 [PMID: [10964453](#) DOI: [10.1006/cbir.2000.0558](#)]
- 115 **Carlioni V**, Mazzocca A, Mello T, Galli A, Capaccioli S. Cell fusion promotes chemoresistance in metastatic colon carcinoma. *Oncogene* 2013; **32**: 2649-2660 [PMID: [22751128](#) DOI: [10.1038/ncr.2012.268](#)]
- 116 **Puig PE**, Guilly MN, Bouchot A, Droin N, Cathelin D, Bouyer F, Favier L, Ghiringhelli F, Kroemer G, Solary E, Martin F, Chauffert B. Tumor cells can escape DNA-damaging cisplatin through DNA endoreduplication and reversible polyploidy. *Cell Biol Int* 2008; **32**: 1031-1043 [PMID: [18550395](#) DOI: [10.1016/j.cellbi.2008.04.021](#)]
- 117 **Weihua Z**, Lin Q, Ramoth AJ, Fan D, Fidler IJ. Formation of solid tumors by a single multinucleated cancer cell. *Cancer* 2011; **117**: 4092-4099 [PMID: [21365635](#) DOI: [10.1002/cncr.26021](#)]
- 118 **Silk AD**, Gast CE, Davies PS, Fakhari FD, Vanderbeek GE, Mori M, Wong MH. Fusion between hematopoietic and epithelial cells in adult human intestine. *PLoS One* 2013; **8**: e55572 [PMID: [23383228](#) DOI: [10.1371/journal.pone.0055572](#)]
- 119 **Ambarus CA**, Krausz S, van Eijk M, Hamann J, Radstake TR, Reedquist KA, Tak PP, Baeten DL. Systematic validation of specific phenotypic markers for in vitro polarized human macrophages. *J Immunol Methods* 2012; **375**: 196-206 [PMID: [22075274](#) DOI: [10.1016/j.jim.2011.10.013](#)]
- 120 **Ma C**, Horlad H, Ohnishi K, Nakagawa T, Yamada S, Kitada S, Motoshima T, Kamba T, Nakayama T, Fujimoto N, Takeya M, Komohara Y. CD163-positive cancer cells are potentially associated with high malignant potential in clear cell renal cell carcinoma. *Med Mol Morphol* 2018; **51**: 13-20 [PMID: [28687956](#) DOI: [10.1007/s00795-017-0165-8](#)]
- 121 **Shabo I**, Stål O, Olsson H, Doré S, Svanvik J. Breast cancer expression of CD163, a macrophage scavenger receptor, is related to early distant recurrence and reduced patient survival. *Int J Cancer* 2008; **123**: 780-786 [PMID: [18506688](#) DOI: [10.1002/ijc.23527](#)]
- 122 **Shabo I**, Olsson H, Elkarim R, Sun XF, Svanvik J. Macrophage Infiltration in Tumor Stroma is Related to Tumor Cell Expression of CD163 in Colorectal Cancer. *Cancer Microenviron* 2014; **7**: 61-69 [PMID: [24771466](#) DOI: [10.1007/s12307-014-0145-7](#)]
- 123 **Shabo I**, Olsson H, Sun XF, Svanvik J. Expression of the macrophage antigen CD163 in rectal cancer cells is associated with early local recurrence and reduced survival time. *Int J Cancer* 2009; **125**: 1826-1831 [PMID: [19582880](#) DOI: [10.1002/ijc.24506](#)]
- 124 **Aljabery F**, Olsson H, Gimm O, Jahnson S, Shabo I. M2-macrophage infiltration and macrophage traits of tumor cells in urinary bladder cancer. *Urol Oncol* 2018; **36**: 159.e19-159.e26 [PMID: [29288002](#) DOI: [10.1016/j.urolonc.2017.11.020](#)]
- 125 **Maniecki MB**, Etzerodt A, Ulhøi BP, Steiniche T, Borre M, Dyrskjøt L, Orntoft TF, Moestrup SK, Møller HJ. Tumor-promoting macrophages induce the expression of the macrophage-specific receptor CD163 in malignant cells. *Int J Cancer* 2012; **131**: 2320-2331 [PMID: [22362417](#) DOI: [10.1002/ijc.27506](#)]
- 126 **Shabo I**, Midtbø K, Andersson H, Åkerlund E, Olsson H, Wegman P, Gunnarsson C, Lindström A. Macrophage traits in cancer cells are induced by macrophage-cancer cell fusion and cannot be explained by cellular interaction. *BMC Cancer* 2015; **15**: 922 [PMID: [26585897](#) DOI: [10.1186/s12885-015-1935-0](#)]
- 127 **Lindström A**, Midtbø K, Arnesson LG, Garvin S, Shabo I. Fusion between M2-macrophages and cancer

- cells results in a subpopulation of radioresistant cells with enhanced DNA-repair capacity. *Oncotarget* 2017; **8**: 51370-51386 [PMID: 28881654 DOI: 10.18632/oncotarget.17986]
- 128 **Davies PS**, Powell AE, Swain JR, Wong MH. Inflammation and proliferation act together to mediate intestinal cell fusion. *PLoS One* 2009; **4**: e6530 [PMID: 19657387 DOI: 10.1371/journal.pone.0006530]
 - 129 **Miller FR**, McInerney D, Rogers C, Miller BE. Spontaneous fusion between metastatic mammary tumor subpopulations. *J Cell Biochem* 1988; **36**: 129-136 [PMID: 3356752 DOI: 10.1002/jcb.240360204]
 - 130 **Del Monte U**. Does the cell number 10(9) still really fit one gram of tumor tissue? *Cell Cycle* 2009; **8**: 505-506 [PMID: 19176997 DOI: 10.4161/cc.8.3.7608]
 - 131 **Garvin S**, Vikhe Patil E, Arnesson LG, Oda H, Hedayati E, Lindström A, Shabo I. Differences in intra-tumoral macrophage infiltration and radiotherapy response among intrinsic subtypes in pT1-T2 breast cancers treated with breast-conserving surgery. *Virchows Arch* 2019; **475**: 151-162 [PMID: 30915533 DOI: 10.1007/s00428-019-02563-3]
 - 132 **Lee HR**, Hwang KA, Park MA, Yi BR, Jeung EB, Choi KC. Treatment with bisphenol A and methoxychlor results in the growth of human breast cancer cells and alteration of the expression of cell cycle-related genes, cyclin D1 and p21, via an estrogen receptor-dependent signaling pathway. *Int J Mol Med* 2012; **29**: 883-890 [PMID: 22307313 DOI: 10.3892/ijmm.2012.903]
 - 133 **Ding J**, Jin W, Chen C, Shao Z, Wu J. Tumor associated macrophage × cancer cell hybrids may acquire cancer stem cell properties in breast cancer. *PLoS One* 2012; **7**: e41942 [PMID: 22848668 DOI: 10.1371/journal.pone.0041942]
 - 134 **Rupani R**, Handerson T, Pawelek J. Co-localization of beta1,6-branched oligosaccharides and coarse melanin in macrophage-melanoma fusion hybrids and human melanoma cells in vitro. *Pigment Cell Res* 2004; **17**: 281-288 [PMID: 15140074 DOI: 10.1111/j.1600-0749.2004.00148.x]
 - 135 **Shabo I**, Olsson H, Stål O, Svanvik J. Breast cancer expression of DAPI2 is associated with skeletal and liver metastases and poor survival. *Clin Breast Cancer* 2013; **13**: 371-377 [PMID: 23810293 DOI: 10.1016/j.clbc.2013.05.003]
 - 136 **Nguyen TT**, Schwartz EJ, West RB, Warnke RA, Arber DA, Natkunam Y. Expression of CD163 (hemoglobin scavenger receptor) in normal tissues, lymphomas, carcinomas, and sarcomas is largely restricted to the monocyte/macrophage lineage. *Am J Surg Pathol* 2005; **29**: 617-624 [PMID: 15832085 DOI: 10.1097/01.pas.0000157940.80538.ec]
 - 137 **Friedl P**. Cell fusion: new mechanisms of plasticity in cancer? *Lancet Oncol* 2005; **6**: 916-918 [PMID: 16321755 DOI: 10.1016/S1470-2045(05)70439-3]
 - 138 **Dittmar T**, Schwitala S, Seidel J, Haverkamp S, Reith G, Meyer-Staeckling S, Brandt BH, Niggemann B, Zänker KS. Characterization of hybrid cells derived from spontaneous fusion events between breast epithelial cells exhibiting stem-like characteristics and breast cancer cells. *Clin Exp Metastasis* 2011; **28**: 75-90 [PMID: 20981475 DOI: 10.1007/s10585-010-9359-3]
 - 139 **Gal H**, Krizhanovsky V. Cell fusion induced senescence. *Aging (Albany NY)* 2014; **6**: 353-354 [PMID: 24859630 DOI: 10.18632/aging.100670]
 - 140 **Mohr M**, Zaenker KS, Dittmar T. Fusion in cancer: an explanatory model for aneuploidy, metastasis formation, and drug resistance. *Methods Mol Biol* 2015; **1313**: 21-40 [PMID: 25947654 DOI: 10.1007/978-1-4939-2703-6_2]
 - 141 **Krug S**, Abbassi R, Griesmann H, Sipos B, Wiese D, Rexin P, Blank A, Perren A, Haybaeck J, Hüttelmaier S, Rinke A, Gress TM, Michl P. Therapeutic targeting of tumor-associated macrophages in pancreatic neuroendocrine tumors. *Int J Cancer* 2018; **143**: 1806-1816 [PMID: 29696624 DOI: 10.1002/ijc.31562]
 - 142 **Nakatsumi H**, Matsumoto M, Nakayama KI. Noncanonical Pathway for Regulation of CCL2 Expression by an mTORC1-FOXK1 Axis Promotes Recruitment of Tumor-Associated Macrophages. *Cell Rep* 2017; **21**: 2471-2486 [PMID: 29186685 DOI: 10.1016/j.celrep.2017.11.014]
 - 143 **Guth AM**, Hafeman SD, Elmslie RE, Dow SW. Liposomal clodronate treatment for tumour macrophage depletion in dogs with soft-tissue sarcoma. *Vet Comp Oncol* 2013; **11**: 296-305 [PMID: 22540967 DOI: 10.1111/j.1476-5829.2012.00319.x]
 - 144 **Reusser NM**, Dalton HJ, Pradeep S, Gonzalez-Villasana V, Jennings NB, Vasquez HG, Wen Y, Rupaimoole R, Nagaraja AS, Gharpure K, Miyake T, Huang J, Hu W, Lopez-Berestein G, Sood AK. Clodronate inhibits tumor angiogenesis in mouse models of ovarian cancer. *Cancer Biol Ther* 2014; **15**: 1061-1067 [PMID: 24841852 DOI: 10.4161/cbt.29184]
 - 145 **Griesmann H**, Drexel C, Milosevic N, Sipos B, Rosendahl J, Gress TM, Michl P. Pharmacological macrophage inhibition decreases metastasis formation in a genetic model of pancreatic cancer. *Gut* 2017; **66**: 1278-1285 [PMID: 27013602 DOI: 10.1136/gutjnl-2015-310049]



Published By Baishideng Publishing Group Inc
7041 Koll Center Parkway, Suite 160, Pleasanton, CA 94566, USA
Telephone: +1-925-3991568
E-mail: bpgoffice@wjgnet.com
Help Desk: <https://www.f6publishing.com/helpdesk>
<https://www.wjgnet.com>

