

World Journal of *Clinical Cases*

World J Clin Cases 2020 January 6; 8(1): 1-244





REVIEW

- 1 Role of oxysterol-binding protein-related proteins in malignant human tumours
Liu H, Huang S

ORIGINAL ARTICLE

Case Control Study

- 11 Oncogenic role of Tc17 cells in cervical cancer development
Zhang ZS, Gu Y, Liu BG, Tang H, Hua Y, Wang J

Retrospective Study

- 20 Acute distal common bile duct angle is risk factor for post-endoscopic retrograde cholangiopancreatography pancreatitis in beginner endoscopist
Han SY, Kim DU, Lee MW, Park YJ, Baek DH, Kim GH, Song GA
- 29 Three-dimensional computed tomography mapping of posterior malleolar fractures
Su QH, Liu J, Zhang Y, Tan J, Yan MJ, Zhu K, Zhang J, Li C
- 38 Application of a modified surgical position in anterior approach for total cervical artificial disc replacement
Hou WX, Zhang HX, Wang X, Yang HL, Luan XR
- 46 Potential role of the compound Eucommia bone tonic granules in patients with osteoarthritis and osteonecrosis: A retrospective study
Hu CX, Hu KY, Wang JF
- 54 Prognostic factors for overall survival in prostate cancer patients with different site-specific visceral metastases: A study of 1358 patients
Cui PF, Cong XF, Gao F, Yin JX, Niu ZR, Zhao SC, Liu ZL
- 68 Application of multiple Roux-en-Y hepaticojejunostomy reconstruction by formation of bile hilar duct lake in the operation of hilar cholangiocarcinoma
Yang XJ, Dong XH, Chen SY, Wu B, He Y, Dong BL, Ma BQ, Gao P
- #### Observational Study
- 76 Relationship between β -amyloid protein 1-42, thyroid hormone levels and the risk of cognitive impairment after ischemic stroke
Mao L, Chen XH, Zhuang JH, Li P, Xu YX, Zhao YC, Ma YJ, He B, Yin Y

Prospective Study

- 88 Can the wet suction technique change the efficacy of endoscopic ultrasound-guided fine-needle aspiration for diagnosing autoimmune pancreatitis type 1? A prospective single-arm study
Sugimoto M, Takagi T, Suzuki R, Konno N, Asama H, Sato Y, Irie H, Watanabe K, Nakamura J, Kikuchi H, Takasumi M, Hashimoto M, Kato T, Hikichi T, Notohara K, Ohira H

CASE REPORT

- 97 Pembrolizumab - emerging treatment of pulmonary sarcomatoid carcinoma: A case report
Cimpeanu E, Ahmed J, Zafar W, DeMarinis A, Bardarov SS, Salman S, Bloomfield D
- 103 Sclerosing angiomatoid nodular transformation of the spleen, a rare cause for splenectomy: Two case reports
Chikhladze S, Lederer AK, Fichtner-Feigl S, Wittel UA, Werner M, Aumann K
- 110 Postpartum pubic symphysis diastasis-conservative and surgical treatment methods, incidence of complications: Two case reports and a review of the literature
Norvilaite K, Kezeviciute M, Ramasauskaite D, Arlauskienė A, Bartkeviciene D, Uvarovas V
- 120 Use of omental patch and endoscopic closure technique as an alternative to surgery after endoscopic full thickness resection of gastric intestinal stromal tumors: A series of cases
Sachdev AH, Iqbal S, Ribeiro IB, de Moura DTH
- 126 Primary maxillary chondrosarcoma: A case report
Cuevas-González JC, Reyes-Escalera JO, González JL, Sánchez-Romero C, Espinosa-Cristóbal LF, Reyes-López SY, Tovar Carrillo KL, Donohue Cornejo A
- 133 Hyalinizing clear cell carcinoma-a rare entity in the oral cavity: A case report
Donohue-Cornejo A, Paes de Almeida O, Sánchez-Romero C, Espinosa-Cristóbal LF, Reyes-López SY, Cuevas-González JC
- 140 Jejunal cavernous lymphangioma manifested as gastrointestinal bleeding with hypogammaglobulinemia in adult: A case report and literature review
Tan B, Zhang SY, Wang YN, Li Y, Shi XH, Qian JM
- 149 Large pelvic mass arising from the cervical stump: A case report
Zhang K, Jiang JH, Hu JL, Liu YL, Zhang XH, Wang YM, Xue FX
- 157 Mechanical intestinal obstruction due to isolated diffuse venous malformations in the gastrointestinal tract: A case report and review of literature
Li HB, Lv JF, Lu N, Lv ZS
- 168 Two-level percutaneous endoscopic lumbar discectomy for highly migrated upper lumbar disc herniation: A case report
Wu XB, Li ZH, Yang YF, Gu X

- 175 Successful treatment of congenital palate perforation: A case report
Zhang JF, Zhang WB
- 179 Calcitonin-negative neuroendocrine tumor of the thyroid with metastasis to liver-rare presentation of an unusual tumor: A case report and review of literature
Cai HJ, Wang H, Cao N, Huang B, Kong FL, Lu LR, Huang YY, Wang W
- 188 Giant exophytic cystic adenomyosis with a levonorgestrel containing intrauterine device out of the uterine cavity after uterine myomectomy: A case report
Zhou Y, Chen ZY, Zhang XM
- 194 Unusual presentation of bladder neuroblastoma in a child: A case report
Cai JB, Wang JH, He M, Wang FL, Xiong JN, Mao JQ, Li MJ, Zhu K, Liang JW
- 200 Value of dynamic plasma cell-free DNA monitoring in septic shock syndrome: A case report
Liu JP, Zhang SC, Pan SY
- 208 Sarcomatoid intrahepatic cholangiocarcinoma mimicking liver abscess: A case report
Wang Y, Ming JL, Ren XY, Qiu L, Zhou LJ, Yang SD, Fang XM
- 217 Clinical characteristics on manifestation and gene mutation of a transient neonatal cyanosis: A case report
Yuan J, Zhu XP
- 222 Six families with balanced chromosome translocation associated with reproductive risks in Hainan Province: Case reports and review of the literature
Chen YC, Huang XN, Kong CY, Hu JD
- 234 Primary intestinal extranodal natural killer/T-cell lymphoma, nasal type: A case report
Dong BL, Dong XH, Zhao HQ, Gao P, Yang XJ

LETTER TO THE EDITOR

- 242 Cluster headache as a manifestation of a stroke-like episode in a carrier of the MT-ND3 variant m.10158T>C
Finsterer J

ABOUT COVER

Editorial Board Member of *World Journal of Clinical Cases*, Maddalena Zippi, MD, PhD, Doctor, Unit of Gastroenterology and Digestive Endoscopy, Sandro Pertini Hospital, Rome 00157, Italy

AIMS AND SCOPE

The primary aim of *World Journal of Clinical Cases* (WJCC, *World J Clin Cases*) is to provide scholars and readers from various fields of clinical medicine with a platform to publish high-quality clinical research articles and communicate their research findings online.

WJCC mainly publishes articles reporting research results and findings obtained in the field of clinical medicine and covering a wide range of topics, including case control studies, retrospective cohort studies, retrospective studies, clinical trials studies, observational studies, prospective studies, randomized controlled trials, randomized clinical trials, systematic reviews, meta-analysis, and case reports.

INDEXING/ABSTRACTING

The WJCC is now indexed in PubMed, PubMed Central, Science Citation Index Expanded (also known as SciSearch®), and Journal Citation Reports/Science Edition. The 2019 Edition of Journal Citation Reports cites the 2018 impact factor for WJCC as 1.153 (5-year impact factor: N/A), ranking WJCC as 99 among 160 journals in Medicine, General and Internal (quartile in category Q3).

RESPONSIBLE EDITORS FOR THIS ISSUE

Responsible Electronic Editor: *Yan-Xia Xing*

Proofing Production Department Director: *Yun-Xiaojuan Wu*

NAME OF JOURNAL

World Journal of Clinical Cases

ISSN

ISSN 2307-8960 (online)

LAUNCH DATE

April 16, 2013

FREQUENCY

Semimonthly

EDITORS-IN-CHIEF

Dennis A Bloomfield, Bao-Gan Peng, Sandro Vento

EDITORIAL BOARD MEMBERS

<https://www.wjnet.com/2307-8960/editorialboard.htm>

EDITORIAL OFFICE

Jin-Lei Wang, Director

PUBLICATION DATE

January 6, 2020

COPYRIGHT

© 2020 Baishideng Publishing Group Inc

INSTRUCTIONS TO AUTHORS

<https://www.wjnet.com/bpg/gerinfo/204>

GUIDELINES FOR ETHICS DOCUMENTS

<https://www.wjnet.com/bpg/GerInfo/287>

GUIDELINES FOR NON-NATIVE SPEAKERS OF ENGLISH

<https://www.wjnet.com/bpg/gerinfo/240>

PUBLICATION MISCONDUCT

<https://www.wjnet.com/bpg/gerinfo/208>

ARTICLE PROCESSING CHARGE

<https://www.wjnet.com/bpg/gerinfo/242>

STEPS FOR SUBMITTING MANUSCRIPTS

<https://www.wjnet.com/bpg/GerInfo/239>

ONLINE SUBMISSION

<https://www.f6publishing.com>



Hyalinizing clear cell carcinoma-a rare entity in the oral cavity: A case report

Alejandro Donohue-Cornejo, Oslei Paes de Almeida, Celeste Sánchez-Romero, León Francisco Espinosa-Cristóbal, Simón Yobanny Reyes-López, Juan Carlos Cuevas-González

ORCID number: Alejandro Donohue-Cornejo (0000-0002-9325-6165); Oslei Paes de Almeida (0000-0003-2002-8003); Celeste Sánchez-Romero (0000-0001-5365-2692); León Francisco Espinosa-Cristóbal (0000-0002-9295-6928); Simón Yobanny Reyes-López (0000-0002-9017-3233); Juan Carlos Cuevas-González (0000-0002-6981-8025).

Author contributions: Espinosa-Cristóbal LF and Cuevas-González JC treated the patient; Donohue-Cornejo A and Reyes-López SY reviewed the literature and contributed to manuscript drafting; Paes de Almeida O and Sánchez-Romero C performed the histopathological analyses.

Informed consent statement: Informed written consent was obtained from the patient for publication of this report and any accompanying images.

Conflict-of-interest statement: The authors declare that they have no conflict of interest.

CARE Checklist (2016) statement: The authors have read the CARE Checklist (2016), and the manuscript was prepared and revised according to the CARE Checklist (2016).

Open-Access: This article is an open-access article which was selected by an in-house editor and fully peer-reviewed by external reviewers. It is distributed in accordance with the Creative Commons Attribution Non

Alejandro Donohue-Cornejo, León Francisco Espinosa-Cristóbal, Simón Yobanny Reyes-López, Juan Carlos Cuevas-González, Stomatology Department, Biomedical Sciences Institute, Autonomous University of Ciudad Juárez, Chihuahua 32310, México

Oslei Paes de Almeida, Celeste Sánchez-Romero, Diagnosis Department, Oral Pathology Section, Dentistry Faculty of Piracicaba, State University of Campinas, São Paulo 13414-903, Brazil

Corresponding author: Juan Carlos Cuevas González, PhD, Academic Research, Research Professor, Stomatology Department, Biomedical Sciences Institute, Autonomous University of Ciudad Juárez, Anillo Envolverte del Pronaf s/n, Zona Pronaf Núm. 32315, Cd. Juárez, Chihuahua 32310, México. juan.cuevas@uacj.mx

Abstract

BACKGROUND

Hyalinizing clear cell carcinoma (HCCC) is an uncommon tumor that originates in the salivary glands. This neoplasia constitutes less than 1% of minor salivary gland tumors.

CASE SUMMARY

A 67-year-old female visited the maxillofacial surgery department owing to a smooth, slightly yellowish protruding mass on the left side of the floor of the mouth, at the level of the molars; the tumor mass had a soft consistency on palpation and did not adhere to deep planes. The microscopical analysis of the excisional biopsy showed that the lesion was composed of sheets and cords of clear cells separated by thick eosinophilic bands of hyaline collagen. Normal glandular tissue was absent, periodic acid-Schiff with and without diastase stains, and immunohistochemical reactions were performed to confirm the diagnosis. This is the second case reported in the literature of HCCC arising in the floor of the mouth.

CONCLUSION

HCCC is a rare salivary gland tumor that has not been studied extensively. Its diagnosis is usually challenging, because clinically, it can be confused with a benign neoplasm.

Key words: Hyalinizing clear cell carcinoma; Salivary gland tumor; Immunohistochemical reactions; Case report

Commercial (CC BY-NC 4.0) license, which permits others to distribute, remix, adapt, build upon this work non-commercially, and license their derivative works on different terms, provided the original work is properly cited and the use is non-commercial. See: <http://creativecommons.org/licenses/by-nc/4.0/>

Manuscript source: Unsolicited manuscript

Received: October 15, 2019

Peer-review started: October 15, 2019

First decision: November 13, 2019

Revised: November 18, 2019

Accepted: November 30, 2019

Article in press: November 30, 2019

Published online: January 6, 2020

P-Reviewer: Ikura Y, Ishizawa K

S-Editor: Ma YJ

L-Editor: A

E-Editor: Liu JH



©The Author(s) 2020. Published by Baishideng Publishing Group Inc. All rights reserved.

Core tip: Hyalinizing clear cell carcinoma is a rare tumor that originates in the salivary glands. This neoplasia constitutes less than 1% of minor salivary gland tumors, the lesion is composed for clear cells that formed compact groups and cords that were separated by thick eosinophilic bands of collagen, with the appearance of hyaline. This carcinoma is a rare salivary gland tumor that has not been studied extensively. Its diagnosis is usually challenging, because clinically, it can be confused with a benign neoplasm.

Citation: Donohue-Cornejo A, Paes de Almeida O, Sánchez-Romero C, Espinosa-Cristóbal LF, Reyes-López SY, Cuevas-González JC. Hyalinizing clear cell carcinoma-a rare entity in the oral cavity: A case report. *World J Clin Cases* 2020; 8(1): 133-139

URL: <https://www.wjgnet.com/2307-8960/full/v8/i1/133.htm>

DOI: <https://dx.doi.org/10.12998/wjcc.v8.i1.133>

INTRODUCTION

Hyalinizing clear cell carcinoma (HCCC) is a rare tumor that originates in the salivary glands. Although this neoplasia constitutes less than 1% of minor salivary gland tumors, when this carcinoma presents, it has a predilection to develop in this type of gland. Due to its rarity, it has not been studied extensively. To this end, we present this case report, the clinical, histopathological, and immunohistochemical documentation of which can be useful for the clinician and pathologist when making the diagnosis, increasing our understanding and recognition of this carcinoma^[1,2].

CASE PRESENTATION

Chief complaints

A 67-year-old female visited the maxillofacial surgery department due to a smooth, slightly yellowish protruding mass on the left side of the floor of the mouth, at the level of the molars (Figure 1A).

History of present illness

The tumor mass had a soft consistency on palpation and did not adhere to deep planes. The patient reported having noticed an increase in the volume of the mass for approximately 1 year asymptotically.

Pathological findings

Based on the clinical features, the surgeon chose to perform an excisional biopsy. The tumor was well-demarcated from the surrounding tissues therefore, it was completely removed, measuring 5 cm × 4 cm × 4 cm (Figure 1B), and once the sample was processed and stained with hematoxylin and eosin (HE), a tumor lesion was observed, composed primarily of diffuse, proliferating clear cells that formed compact groups and cords that were separated by thick eosinophilic bands of collagen, with the appearance of hyaline (Figure 2A and B). Despite the predominance of clear cells, focal groups of tumor cells with eosinophilic cytoplasm were identified (Figure 2D), occasional mitoses and neural invasion were observed (Figure 2C).

Periodic acid-Schiff (PAS) stains and immunohistochemical reactions were performed to confirm the diagnosis. HCCC is diastase sensitive due to the glycogen of the tumor cells, as showed by our case, it was negative for PAS with diastase (Figure 3A) and positive for PAS without diastase (Figure 3B). Antibodies against AE1-AE3, CK5, CK7, p63, and Ki-67 were positive. In contrast, there was no signal with CK14, CK19, or smooth muscle antibodies (SMAs) (Figures 3 and 4).

FINAL DIAGNOSIS

Considering the clinical, histopathological, histochemical, and immunohistochemical findings, a diagnosis of HCCC was reached. Once the diagnosis was established and the cell morphology was re-evaluated surgical borders with neoplastic cells were

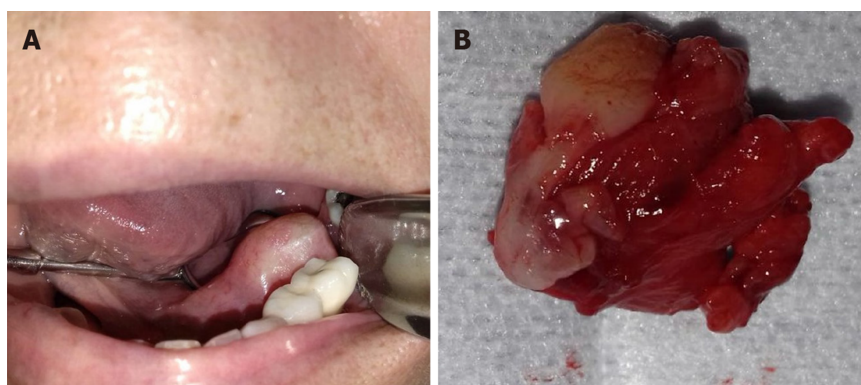


Figure 1 Clinical and macroscopic aspects of the lesion. A: Volume increase in floor of mouth on the left side, measuring approximately 5 cm × 4 cm × 4 cm, with smooth, flat surface on palpation, not adherent to deep planes; B: Macroscopic appearance of the specimen by excisional biopsy.

identified.

TREATMENT

The patient underwent a second surgery, widen the margins, to ensure complete removal of the lesion.

OUTCOME AND FOLLOW-UP

Close long-term follow-up.

DISCUSSION

Several studies suggest that HCCC presents primarily as a painless lesion that most often affects females (2:1), between the sixth and seventh decades of life. It is considered a low-grade neoplasm that rarely recurs or metastasizes^[3].

This case had clinical characteristics of a benign lesion with duration of a year, which was intact covering mucosa and well-demarcated from the surrounding tissues. When the computerized axial tomography was performed, a small isodense exophytic mass was described on the floor of the mouth, close to the left molar area without growth towards the deep planes. According to our research, this is the second case of HCCC located on the floor of the mouth (Table 1), the patient did not seek consultation until the volume increase was considerable.

Due to the clinical characteristics, such as its well-defined increase in volume, its similarity in color to the adjacent mucosa, and its asymptomatic nature and evolution, our clinical impression was that of a benign neoplasm. However, following the standard protocol of care, a biopsy was performed by histopathology and complementary approaches, which allowed us to reach a definitive diagnosis of HCCC.

Overall, 81.8% of cases of HCCC occur in the buccal cavity. The most frequent sites are the tongue, hard palate, floor of the mouth, and base of the tongue; HCCC is uncommon in the major salivary glands, nasopharynx, hypopharynx, and lacrimal gland^[4]. In a review of the literature that we conducted in cases from 2011 to date, we found 13 published clinical cases located in oral cavity of which 8 (61%) affected the female sex and 5 (39%) the male (Table 1).

Histopathologically, HCCC comprises proliferating epithelial cells with a clear cytoplasm. In some cases, a subgroup of cells with eosinophilic cytoplasm are present, all of which are organized in trabeculae, cords, or solid nests that are surrounded by a stroma of hyaline fibrous tissue. This tumor usually presents with immuno-histochemical positivity for p63, CK5, CK7, CK14, and CK19 and negative S-100, CK 14, SMA, and PAX8 expression, in addition to negativity for PAS with diastase, which favors a diagnosis of HCCC and helps rule out other histopathological differential diagnoses, such as malignant myoepithelioma, epithelial-myoepithelial carcinoma, clear cell mucoepidermoid carcinoma, low-grade polymorphic adenocarcinoma,

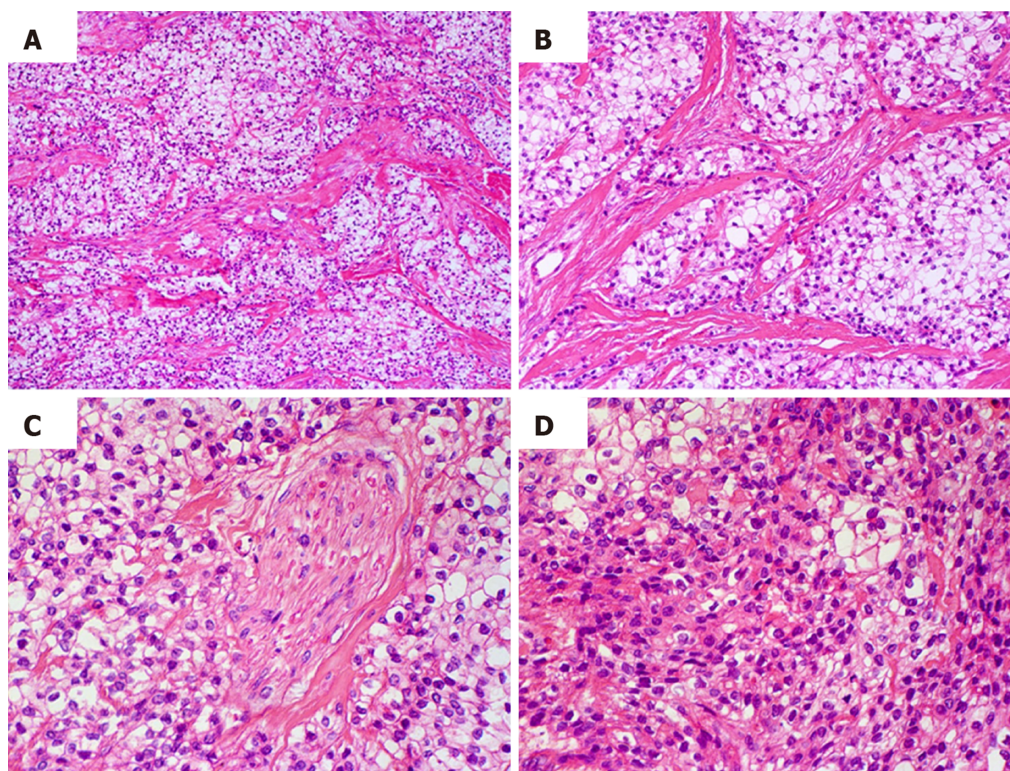


Figure 2 Histological characteristics of the tumor. A and B: Groups of clear cells separated by thick bundles of eosinophilic collagen fibers with hyaline appearance; C: Neural invasion area; D: Diffuse proliferation of tumor cells forming solid areas or tumor sheets. A population of tumor cells with eosinophilic cytoplasm was also observed (Hematoxylin and eosin, original magnification A: $\times 100$, B: $\times 200$, C, D: $\times 400$).

acinar cell carcinoma, clear cell oncocytoma, and renal metastatic carcinoma^[5-9]. Thus, an immunohistochemical panel with the appropriate antibodies must be performed.

In our case, we observed immunolabeling with antibodies against AE1-AE3, CK5, CK7, p63, and Ki67, whereas SMA, CK14, and CD10 were negative. Thus, we recommend using these immunohistochemical markers to aid in the diagnosis of this neoplasia with the histopathological characteristics that we have described.

HCCC is considered a low-grade malignancy. However, the size of the tumor, the cellular atypia, and the number of mitoses is related to its prognosis, and as with any other carcinoma, to decrease the likelihood of recurrence, it must be removed completely^[10]. In case series, up to 25% of evidence of metastasis has been reported^[11]. Although the treatment depends on the clinical characteristics of the tumor, in 50% of cases, it is limited to surgery, versus surgery and radiotherapy in 25.7%, with a 5-year survival of 77.6%; the remainder corresponds to other treatment modalities or is unknown to due to the unavailability of data^[1].

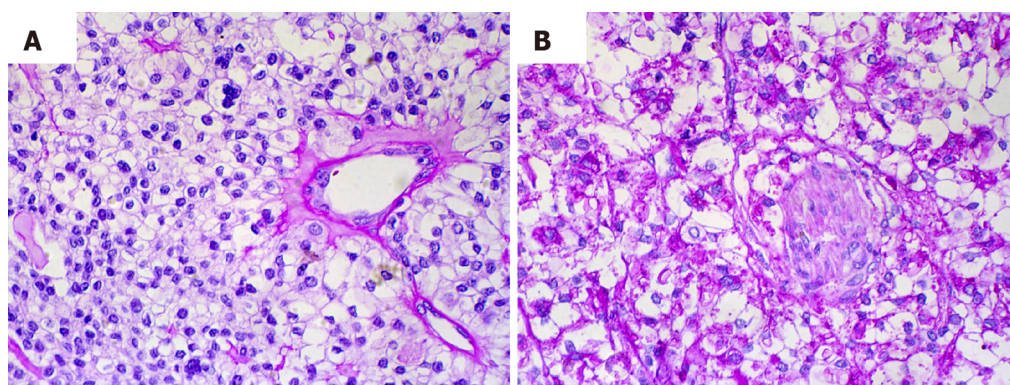
In our case, by histopathology, we noted that the frequency of atypia and mitosis was low and that the positivity to Ki-67 antibody was of 3%, which was consistent with a low-grade malignant neoplasm. Although some tumor cells had infiltrated nervous tissue, the presence of metastases was ruled out by imaging (positron emission tomography). Because the edges of the excisional biopsy were not free of tumor cells, the patient underwent a second surgery to eliminate the possibility of recurrence. After 2 years of follow-up, there are no data that suggest recurrence, but continuous and long-term follow-up is indicated to identify any eventual alterations in a timely manner.

CONCLUSION

HCCC is a rare salivary gland tumor that has not been studied extensively. We presented herein the second case reported in the literature affecting the floor of the mouth. Its diagnosis is usually challenging, because clinically, it can be confused with a benign neoplasm, whereas histologically, there are several differential diagnoses. Thus, auxiliary techniques, such as PAS staining and immunohistochemistry, are valuable tools in reaching the correct diagnosis of this tumor.

Table 1 Hyalinizing clear cell carcinoma cases reported from 2011 to 2019

Ref.	Sex	Age (yr)	Location	Treatment	Prognosis
Bostanci <i>et al</i> ^[12] , 2019	F	51	Right upper gingiva	Maxillectomy	Tumor recurrence
Hwang <i>et al</i> ^[6] , 2019	F	71	Base of tongue	Surgical treatment and chemoradiation	Not referred
Gushi <i>et al</i> ^[9] , 2017	F	31	Maxillary alveolar mucosa	Excisional biopsy	Good
Moreno <i>et al</i> ^[13] , 2014	F	47	Base of tongue	Surgical treatment	Good
Lin <i>et al</i> ^[14] , 2015	F	37	Tongue	Surgical treatment	Good
Kim <i>et al</i> ^[15] , 2013	M	54	Mouth floor	Surgical treatment and radiation	Good
Gon <i>et al</i> ^[3] , 2013	F	70	Palate	Surgical treatment	Tumor recurrence
Saleh <i>et al</i> ^[16] , 2012	M	31	Soft Palate	Incisional biopsy	Bad, the patient declined any treatment
Roby <i>et al</i> ^[8] , 2012	F	60	Tongue	Surgical excision	Not referred
Baghirath <i>et al</i> ^[4] , 2011	F	36	Right upper gingiva	Surgical treatment	Not referred
Kauzman <i>et al</i> ^[17] , 2011	M	53	Right upper gingiva	Surgical excision and radiation treatment	Good
Chatelain <i>et al</i> ^[18] , 2011	M	48	Right upper gingiva	Maxillectomy, cervical lymph node dissection, and postoperative radiotherapy	No recurrence at 12 mo
Masilamani <i>et al</i> ^[19] , 2011	M	73	Base of tongue	Surgical excision	No recurrence at 12 mo

**Figure 3** Negative tumor cells staining and histochemistry periodic acid-Schiff positive without diastase. A: Negative tumor cells staining by periodic acid-Schiff with diastase; B: Histochemistry periodic acid-Schiff positive without diastase (original magnification, ×400).

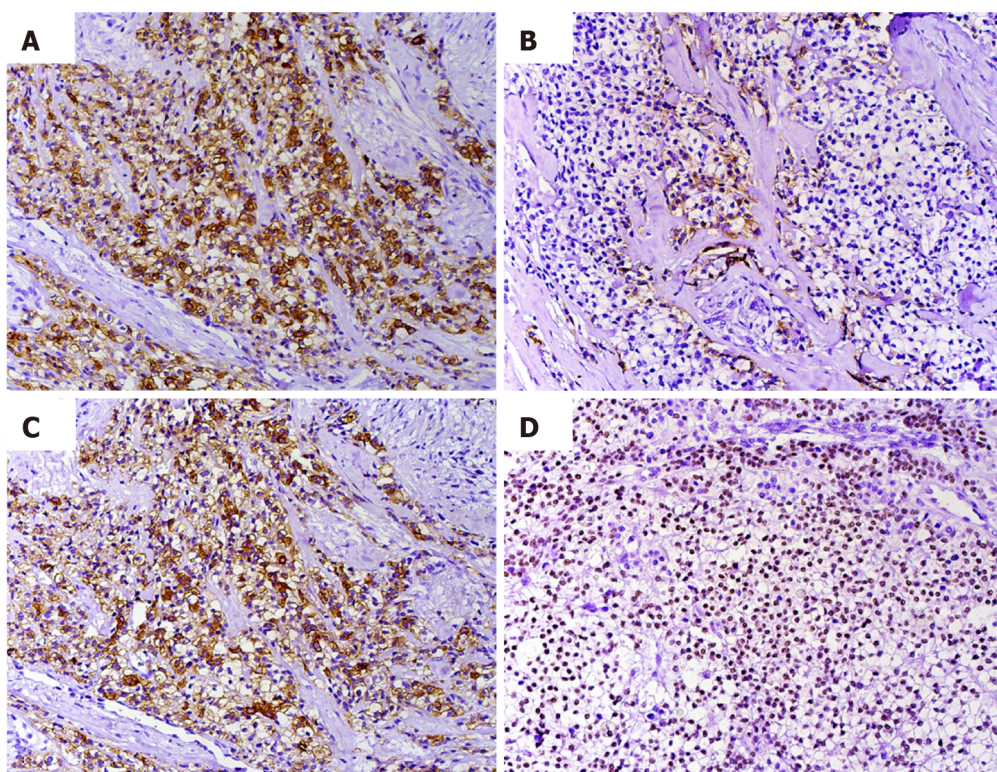


Figure 4 Immunohistochemical profile of the tumor. An intense and diffuse positive reaction was observed in most tumor cells for AE1-AE3 (A), CK7 (C), and p63 (D), whereas CK5 (B) showed focal positivity (original magnification A, B, C, D. $\times 200$).

REFERENCES

- 1 Oliver J, Wu P, Chang C, Roden D, Wang B, Liu C, Hu K, Schreiber D, Givi B. Patterns of Care and Outcome of Clear Cell Carcinoma of the Head and Neck. *Otolaryngol Head Neck Surg* 2019; **161**: 98-104 [PMID: 30857486 DOI: 10.1177/0194599819835779]
- 2 Icard B, Grider DJ, Aziz S, Rubio E. Primary tracheal hyalinizing clear cell carcinoma. *Lung Cancer* 2018; **125**: 100-102 [PMID: 30429005 DOI: 10.1016/j.lungcan.2018.09.009]
- 3 Gon S, Bhattacharyya A, Majumdar B, Das TK. Post-radiotherapy locoregional recurrence of hyalinizing clear cell carcinoma of palate. *J Cancer Res Ther* 2013; **9**: 281-283 [PMID: 23771375 DOI: 10.4103/0973-1482.113386]
- 4 Baghirath PV, Kumar JV, Vinay BH. Hyalinizing clear cell carcinoma: A rare entity. *J Oral Maxillofac Pathol* 2011; **15**: 335-339 [PMID: 22144841 DOI: 10.4103/0973-029X.86714]
- 5 Yamanishi T, Kutsuma K, Masuyama K. A Case of Hyalinizing Clear Cell Carcinoma, So-Called Clear Cell Carcinoma, Not Otherwise Specified, of the Minor Salivary Glands of the Buccal Mucosa. *Case Rep Otolaryngol* 2015; **2015**: 471693 [PMID: 26600962 DOI: 10.1155/2015/471693]
- 6 Hwang G, Goldenberg D, Warrick J, Slonimsky G. A Hyalinizing Clear Cell Carcinoma of the Base of Tongue. *Ear Nose Throat J* 2019; 145561319840513 [PMID: 30987464 DOI: 10.1177/0145561319840513]
- 7 AlAli BM, Alyousef MJ, Kamel AS, Al Hamad MA, Al-Bar MH, Algowiez RM. Primary paranasal sinus hyalinizing clear cell carcinoma: a case report. *Diagn Pathol* 2017; **12**: 70 [PMID: 28946910 DOI: 10.1186/s13000-017-0659-7]
- 8 Roby BB, Pambuccian SE, Khariwala SS. Pathology quiz case 2. Hyalinizing clear cell carcinoma. *Arch Otolaryngol Head Neck Surg* 2012; **138**: 207 [PMID: 22351872 DOI: 10.1001/archoto.2011.1245a]
- 9 Gushi E, Seki U, Orhan K. Hyalinizing Clear Cell Carcinoma of Maxilla. *J Clin Diagn Res* 2017; **11**: ZL01-ZL02 [PMID: 28893056 DOI: 10.7860/JCDR/2017/29193.10228]
- 10 Zhao W, Yang L, Wang L, Zuo W, Yuan S, Yu J, Yu Q, Hu X, Wang S, Liu N, Zhang H, Wei Y. Primary clear cell carcinoma of nasal cavity: report of six cases and review of literature. *Int J Clin Exp Med* 2014; **7**: 5469-5476 [PMID: 25664057]
- 11 O'Sullivan-Mejia ED, Massey HD, Faquin WC, Powers CN. Hyalinizing clear cell carcinoma: report of eight cases and a review of literature. *Head Neck Pathol* 2009; **3**: 179-185 [PMID: 20596970 DOI: 10.1007/s12105-009-0124-3]
- 12 Bostanci A, Ozbudak IH, Turhan M. Hyalinizing Clear Cell Carcinoma of the Maxilla. *J Maxillofac Oral Surg* 2019; **18**: 391-394 [PMID: 31371880 DOI: 10.1007/s12663-018-1163-7]
- 13 Moreno-Zafra S, Rodríguez-Verdugo M, Hernández-López R. Carcinoma de células claras en la base de la lengua. *Acta Otorrinolaringol Esp* 2014; **65**: 133-34 [DOI: 10.1016/j.otorri.2012.09.004]
- 14 Lin JC, Liao JB, Fu HT, Chang TS, Wang JS. Salivary Gland Hyalinizing Clear Cell Carcinoma. *J Pathol Transl Med* 2015; **49**: 351-353 [PMID: 26076720 DOI: 10.4132/jptm.2015.05.06]
- 15 Kim DW, Park HJ, Cha IH, Yang DH, Kim HS, Nam W. An atypical case of rare salivary malignancy, hyalinizing clear cell carcinoma. *J Korean Assoc Oral Maxillofac Surg* 2013; **39**: 283-288 [PMID: 24516818 DOI: 10.5125/jkaoms.2013.39.6.283]
- 16 Saleh KA, Nurishmah MI, Firouzeh GN, Goh BS. Primary clear cell carcinoma of minor salivary gland of

- the soft palate: a case report. *Med J Malaysia* 2012; **67**: 335-336 [PMID: [23082431](#)]
- 17 **Kauzman A**, Tabet JC, Stiharu TI. Hyalinizing clear cell carcinoma: a case report and review of the literature. *Oral Surg Oral Med Oral Pathol Oral Radiol Endod* 2011; **112**: e26-e34 [PMID: [21669357](#) DOI: [10.1016/j.tripleo.2011.02.041](#)]
- 18 **Chatelain B**, Curlier A, Euvrard E, Vitte F, Ricbourg B, Meyer C. [Hyalinizing clear cell carcinoma of the maxilla]. *Rev Stomatol Chir Maxillofac* 2011; **112**: 183-186 [PMID: [21497361](#) DOI: [10.1016/j.stomax.2011.03.002](#)]
- 19 **Masilamani S**, Rao S, Chirakkal P, Kumar AR. Hyalinizing clear cell carcinoma of the base of tongue: a distinct and rare entity. *Indian J Pathol Microbiol* 2011; **54**: 167-169 [PMID: [21393908](#) DOI: [10.4103/0377-4929.77393](#)]



Published By Baishideng Publishing Group Inc
7041 Koll Center Parkway, Suite 160, Pleasanton, CA 94566, USA
Telephone: +1-925-2238242
E-mail: bpgoffice@wjgnet.com
Help Desk: <https://www.f6publishing.com/helpdesk>
<https://www.wjgnet.com>

