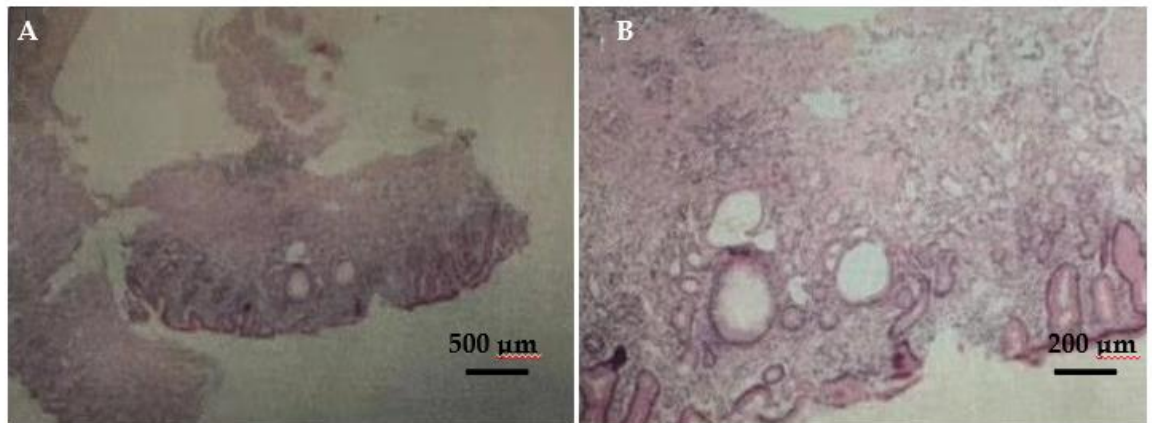
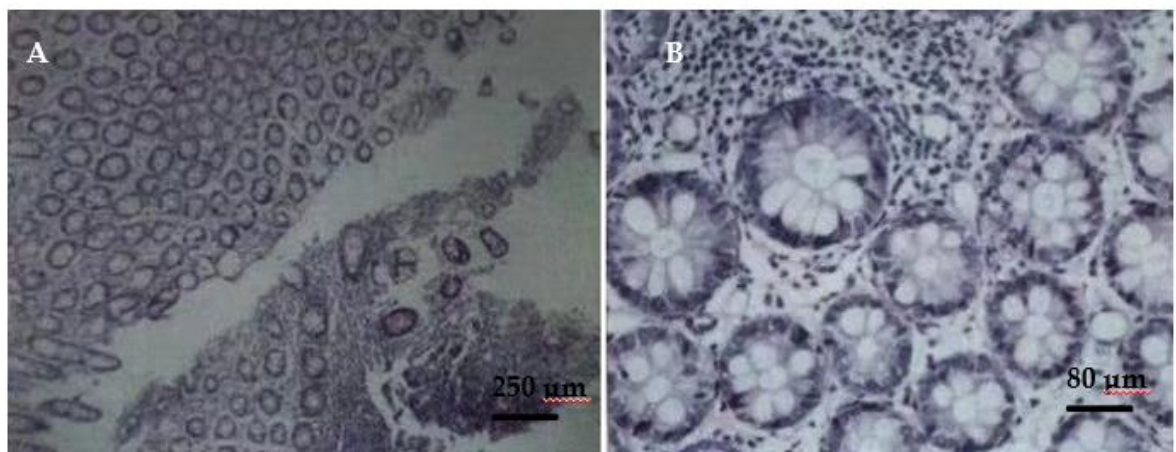


SUPPLEMENTARY MATERIALS



SF. 1 Microscopic appearance of gastric biopsy. (A) Haematoxylin and eosin (H&E) staining of the biopsy specimen did not find deposits of acellular amyloid matrix. Haematoxylin and eosin (H&E) $\times 40$. (B) Negative staining for Congo red and methyl violet ($\times 100$).



SF. 2 Microscopic appearance of intestinal biopsy. (A) Haematoxylin and eosin (H&E) staining of the biopsy specimen did not find deposits of acellular amyloid matrix. Haematoxylin and eosin (H&E) $\times 100$. (B) Negative staining for Congo red and methyl violet ($\times 200$).

S Table 1 Timeline

Timeline	
2018.11-2019.10	Collecting the data and follow-up
2019.10-2019.11	Reading the literature
2019.11-2019.12	Writing
2019.12	Submitting
2019.12-2020.1	Revising
2020.1	Submitting
2020.3	Revising
2020.3-	Submitting