

World Journal of *Clinical Cases*

World J Clin Cases 2020 June 26; 8(12): 2408-2673





REVIEW

- 2408** Assessment of diaphragmatic function by ultrasonography: Current approach and perspectives
Boussuges A, Rives S, Finance J, Brégeon F
- 2425** Mechanisms of resveratrol in the prevention and treatment of gastrointestinal cancer
Wang LY, Zhao S, Lv GJ, Ma XJ, Zhang JB

MINIREVIEWS

- 2438** Clinical benefits of rational-emotive stress management therapy for job burnout and dysfunctional distress of special education teachers
Onuigbo LN, Onyishi CN, Eseadi C
- 2448** Functions and mechanisms of chemokine receptor 7 in tumors of the digestive system
Xin Q, Sun Q, Zhang CS, Zhang Q, Li CJ
- 2464** Computer navigation-assisted minimally invasive percutaneous screw placement for pelvic fractures
Yu T, Cheng XL, Qu Y, Dong RP, Kang MY, Zhao JW

ORIGINAL ARTICLE

Case Control Study

- 2473** Elevated serum growth differentiation factor 15 in multiple system atrophy patients: A case control study
Yue T, Lu H, Yao XM, Du X, Wang LL, Guo DD, Liu YM

Retrospective Study

- 2484** Research on diagnosis-related group grouping of inpatient medical expenditure in colorectal cancer patients based on a decision tree model
Wu SW, Pan Q, Chen T
- 2494** Clinical outcomes of sacral neuromodulation in non-neurogenic, non-obstructive dysuria: A 5-year retrospective, multicentre study in China
Meng LF, Zhang W, Wang JY, Zhang YG, Zhang P, Liao LM, Lv JW, Ling Q, Wei ZQ, Zhong T, Xu ZH, Wen W, Li JY, Luo DY
- 2502** Magnetic resonance imaging features of minimal-fat angiomyolipoma and causes of preoperative misdiagnosis
Li XL, Shi LX, Du QC, Wang W, Shao LW, Wang YW
- 2510** Evaluation of internal and shell stiffness in the differential diagnosis of breast non-mass lesions by shear wave elastography
Xu P, Wu M, Yang M, Xiao J, Ruan ZM, Wu LY

Observational Study

- 2520** Recovery from prolonged disorders of consciousness: A dual-center prospective cohort study in China
Chen WG, Li R, Zhang Y, Hao JH, Du JB, Guo AS, Song WQ
- 2530** Gene testing for osteonecrosis of the femoral head in systemic lupus erythematosus using targeted next-generation sequencing: A pilot study
Sun HS, Yang QR, Bai YY, Hu NW, Liu DX, Qin CY
- 2542** Real-time three-dimensional echocardiography predicts cardiotoxicity induced by postoperative chemotherapy in breast cancer patients
Zhou F, Niu L, Zhao M, Ni WX, Liu J

Prospective Study

- 2554** Epidemiological and clinical characteristics of COVID-19 patients in Hengyang, Hunan Province, China
Zhong ZF, Huang J, Yang X, Peng JL, Zhang XY, Hu Y, Fu N, Lin HL, Jiang B, Tian YY, Yao HY, Deng LP, Tang XQ, Zhou JC, Tang J, Xie X, Liu Q, Liu J, Dou CY, Dai RJ, Yan B, Yang XF

CASE REPORT

- 2566** Demyelinating polyneuropathy and lymphoplasmacytic lymphoma coexisting in 36-year-old man: A case report
Rozlucka L, Semik-Grabarczyk E, Pietrukaniec M, Żak-Golqb A, Grabarczyk M, Grosicki S, Holecki M
- 2574** Lenvatinib for large hepatocellular carcinomas with portal trunk invasion: Two case reports
Komiyama S, Numata K, Moriya S, Fukuda H, Chuma M, Maeda S
- 2585** Biopsy-proven acute phosphate nephropathy: A case report
Medina-Liabres KRP, Kim BM, Kim S
- 2590** Endodontic management of the maxillary first molar with special root canals: A case report and review of the literature
Zhang ZH, Yao HL, Zhang Y, Wang X
- 2597** Novel approach for the diagnosis of occult cytomegalovirus cholangitis after pediatric liver transplantation: A case report
Liu Y, Sun LY, Zhu ZJ, Qu W
- 2603** Anti-N-methyl-D-aspartate-receptor antibody encephalitis combined with syphilis: A case report
Li XY, Shi ZH, Guan YL, Ji Y
- 2610** Collision tumor of squamous cell carcinoma and neuroendocrine carcinoma in the head and neck: A case report
Wu SH, Zhang BZ, Han L

- 2617** Successful treatment of plasma exchange-refractory thrombotic thrombocytopenic purpura with rituximab: A case report
Chen J, Jin JX, Xu XF, Zhang XX, Ye XN, Huang J
- 2623** Ovarian endometrioid carcinoma resembling sex cord-stromal tumor: A case report
Wei XX, He YM, Jiang W, Li L
- 2629** Headache and sick sinus syndrome: A case report
Bi YC, Gong L
- 2634** Modified pararectus approach for treatment of atypical acetabular anterior wall fracture: A case report
Wang JJ, Ni JD, Song DY, Ding ML, Huang J, He GX, Li WZ
- 2641** Pleomorphic rhabdomyosarcoma of the spermatic cord and a secondary hydrocele testis: A case report
Chen X, Zou C, Yang C, Gao L, Bi LK, Xie DD, Yu DX
- 2647** Comprehensive treatment of rare multiple endocrine neoplasia type 1: A case report
Ma CH, Guo HB, Pan XY, Zhang WX
- 2655** Low-grade fever during COVID-19 convalescence: A report of 3 cases
Zhuang SF, Hu J, Qiao N, Lan ZH, Lai JY, Wu JG, Wu XY
- 2662** Diffuse alveolar hemorrhage with histopathologic manifestations of pulmonary capillaritis: Three case reports
Xie J, Zhao YY, Liu J, Nong GM
- 2667** Presentation of gallbladder torsion at an abnormal position: A case report
Chai JS, Wang X, Li XZ, Yao P, Yan ZZ, Zhang HJ, Ning JY, Cao YB

ABOUT COVER

Editorial Board Member of *World Journal of Clinical Cases*, Marco Fiore, MD, MSc, Doctor, Research Scientist, Department of Women, Child and General and Specialized Surgery, University of Campania "Luigi Vanvitelli", Naples 80138, Italy

AIMS AND SCOPE

The primary aim of *World Journal of Clinical Cases* (WJCC, *World J Clin Cases*) is to provide scholars and readers from various fields of clinical medicine with a platform to publish high-quality clinical research articles and communicate their research findings online.

WJCC mainly publishes articles reporting research results and findings obtained in the field of clinical medicine and covering a wide range of topics, including case control studies, retrospective cohort studies, retrospective studies, clinical trials studies, observational studies, prospective studies, randomized controlled trials, randomized clinical trials, systematic reviews, meta-analysis, and case reports.

INDEXING/ABSTRACTING

The WJCC is now indexed in PubMed, PubMed Central, Science Citation Index Expanded (also known as SciSearch®), and Journal Citation Reports/Science Edition. The 2019 Edition of Journal Citation Reports cites the 2018 impact factor for WJCC as 1.153 (5-year impact factor: N/A), ranking WJCC as 99 among 160 journals in Medicine, General and Internal (quartile in category Q3).

RESPONSIBLE EDITORS FOR THIS ISSUE

Responsible Electronic Editor: Ji-Hong Liu

Proofing Production Department Director: Xiang Li

Responsible Editorial Office Director: Jin-Lai Wang

NAME OF JOURNAL

World Journal of Clinical Cases

ISSN

ISSN 2307-8960 (online)

LAUNCH DATE

April 16, 2013

FREQUENCY

Semimonthly

EDITORS-IN-CHIEF

Dennis A Bloomfield, Bao-Gan Peng, Sandro Vento

EDITORIAL BOARD MEMBERS

<https://www.wjnet.com/2307-8960/editorialboard.htm>

PUBLICATION DATE

June 26, 2020

COPYRIGHT

© 2020 Baishideng Publishing Group Inc

INSTRUCTIONS TO AUTHORS

<https://www.wjnet.com/bpg/gerinfo/204>

GUIDELINES FOR ETHICS DOCUMENTS

<https://www.wjnet.com/bpg/GerInfo/287>

GUIDELINES FOR NON-NATIVE SPEAKERS OF ENGLISH

<https://www.wjnet.com/bpg/gerinfo/240>

PUBLICATION ETHICS

<https://www.wjnet.com/bpg/GerInfo/288>

PUBLICATION MISCONDUCT

<https://www.wjnet.com/bpg/gerinfo/208>

ARTICLE PROCESSING CHARGE

<https://www.wjnet.com/bpg/gerinfo/242>

STEPS FOR SUBMITTING MANUSCRIPTS

<https://www.wjnet.com/bpg/GerInfo/239>

ONLINE SUBMISSION

<https://www.f6publishing.com>

Observational Study

Real-time three-dimensional echocardiography predicts cardiotoxicity induced by postoperative chemotherapy in breast cancer patients

Fang Zhou, Lin Niu, Min Zhao, Wei-Xing Ni, Jian Liu

ORCID number: Fang Zhou (0000-0001-5581-2469); Lin Niu (0000-0002-1442-6497); Min Zhao (0000-0002-7308-102X); Wei-Xing Ni (0000-0002-2987-1622); Jian Liu (0000-0001-7689-8193).

Author contributions: Zhou F and Niu L contributed equally to this study; Zhou F, Niu L, and Zhao M designed the research; Zhou F, Niu L, Zhao M, Ni WX, and Liu J performed the research; Ni WX and Liu J contributed new analytic tools; Zhou F, Niu L, Ni WX, and Liu J analyzed the data; Zhou F, Niu L, and Zhao M wrote the paper.

Supported by Medical and Health Foundation Project of Zhejiang Province, China, No. 2020KY690; and Natural Science Foundation of Zhejiang Province, China, No. LGF20H020004.

Institutional review board

statement: This study was approved by the ethics committee of Affiliated Hangzhou First People's Hospital, Zhejiang University School of Medicine.

Informed consent statement: All patients gave informed consent.

Conflict-of-interest statement: The authors declare that they have no competing interests.

Data sharing statement: No additional data are available.

STROBE statement: The authors have read the STROBE Statement,

Fang Zhou, Jian Liu, Department of Breast Surgery, Key Laboratory of Clinical Cancer Pharmacology and Toxicology Research of Zhejiang Province, Affiliated Hangzhou First People's Hospital, Zhejiang University School of Medicine, Hangzhou 310006, Zhejiang Province, China

Lin Niu, Min Zhao, Wei-Xing Ni, Department of Ultrasound, Key Laboratory of Clinical Cancer Pharmacology and Toxicology Research of Zhejiang Province, Affiliated Hangzhou First People's Hospital, Zhejiang University School of Medicine, Hangzhou 310006, Zhejiang Province, China

Corresponding author: Min Zhao, MD, Deputy Chief Physician, Department of Ultrasound, Key Laboratory of Clinical Cancer Pharmacology and Toxicology Research of Zhejiang Province, Affiliated Hangzhou First People's Hospital, Zhejiang University School of Medicine, No. 261, Huansha Road, Hangzhou 310006, Zhejiang Province, China. hzzhaomin@126.com

Abstract**BACKGROUND**

The anthracycline chemotherapeutic drugs are cardiotoxic. Studies have found some indicators related to cardiotoxicity. However, there is currently no accurate indicator that can predict cardiac toxicity early.

AIM

To explore the diagnostic value of real-time three-dimensional echocardiography (RT3DE) in predicting cardiac toxicity in breast cancer patients undergoing chemotherapy.

METHODS

Female breast cancer patients who underwent radical mastectomy and postoperative chemotherapy at the Affiliated Hangzhou First People's Hospital, Zhejiang University School of Medicine were recruited. All patients were routinely administered with chemotherapy for four cycles (T1-T4) after surgery. Two-dimensional (2D) echocardiography, RT3DE, and serological examinations were performed after each cycle of chemotherapy. Patients were divided into a toxic group and a non-toxic group based on whether patients had Δ left ventricular ejection fraction $> 10\%$ after one year of chemotherapy. Repeated measurement analysis of variance was used to compare the changes in 2D echocardiographic indicators, serological indicators, and RT3DE indicators before

and the manuscript was prepared and revised according to the STROBE Statement.

Open-Access: This article is an open-access article that was selected by an in-house editor and fully peer-reviewed by external reviewers. It is distributed in accordance with the Creative Commons Attribution NonCommercial (CC BY-NC 4.0) license, which permits others to distribute, remix, adapt, build upon this work non-commercially, and license their derivative works on different terms, provided the original work is properly cited and the use is non-commercial. See: <http://creativecommons.org/licenses/by-nc/4.0/>

Manuscript source: Unsolicited manuscript

Received: February 24, 2020

Peer-review started: February 24, 2020

First decision: March 27, 2020

Revised: April 1, 2020

Accepted: June 2, 2020

Article in press: June 2, 2020

Published online: June 26, 2020

P-Reviewer: Bouvier AM, Nagao M

S-Editor: Ma YJ

L-Editor: Wang TQ

E-Editor: Xing YX



and after chemotherapy. Multivariate logistic regression was used to identify independent predictive indicators for cardiac toxicity in postoperative chemotherapy patients. Receiver operating characteristics (ROC) curve analysis was performed to analyze the diagnostic value of potential indicators in the diagnosis of cardiotoxicity.

RESULTS

A total of 107 female breast cancer patients were included in the study. T4 maximum peak velocity in early diastole (E peak)/mitral annulus lateral tissue Doppler (e' peak) (E/e'), serological indicators [T4 cardiac troponin I (cTnI) and T4 pro-brain natriuretic peptide (Pro-BNP)], T3 minimum left atrial volume (LAV), T4 LAVmin, T3 LAV before the start of the P wave (LAVprep), and T4 LAVprep in the toxicity group were significantly higher than those in the non-toxic group. Multivariate logistic regression found that T4 cTnI, T4 Pro-BNP, T3 LAVmin, T4 LAVmin, T3 LAVprep, and T4 LAVprep had potential predictive value for cardiac toxicity ($P < 0.05$). ROC results showed that T4 LAVmin had the highest accuracy for diagnosing cardiac toxicity [area under the curve (AUC) = 0.947; sensitivity = 78.57%; specificity = 94.62%], followed by T4 LAVprep (AUC = 0.899; sensitivity = 100%; specificity = 66.67%). The accuracies of LAVprep and LAVprep in predicting cardiac toxicity were higher than those of T3 LAVmin and T3 LAVprep.

CONCLUSION

RT3DE of left atrial volume can be used to predict the cardiotoxicity caused by chemotherapy, and it is expected to guide the clinical adjustment of dose and schedule in time.

Key words: Atrial volume; Chemotherapy; Breast cancer; Cardiac toxicity; Real-time three-dimensional echocardiography; Anthracyclines

©The Author(s) 2020. Published by Baishideng Publishing Group Inc. All rights reserved.

Core tip: Although chemotherapeutics can improve the curative effect of breast cancer, there is a certain degree of cardiotoxicity. The patient's cardiac function needs to be closely monitored during chemotherapy. Studies have found that left ventricular diastolic dysfunction can indicate early cardiac impairment. Therefore, the analysis of left ventricular diastolic function to evaluate the cardiac toxicity is the research focus. However, the current indicators can only prove that they are related to cardiotoxicity, but they cannot early predict the occurrence of cardiotoxicity. In this study, RT3DE was used to measure the left atrial volume, and it was found that the left atrial volume index was the most accurate in predicting the cardiotoxicity caused by chemotherapy in the early stage.

Citation: Zhou F, Niu L, Zhao M, Ni WX, Liu J. Real-time three-dimensional echocardiography predicts cardiotoxicity induced by postoperative chemotherapy in breast cancer patients. *World J Clin Cases* 2020; 8(12): 2542-2553

URL: <https://www.wjgnet.com/2307-8960/full/v8/i12/2542.htm>

DOI: <https://dx.doi.org/10.12998/wjcc.v8.i12.2542>

INTRODUCTION

Anthracyclines-based combined chemotherapy can improve the surgical outcome of patients with breast cancer and prolong their lifetime. The anthracycline chemotherapeutic drugs are cardiotoxic, and excessive use will lead to left ventricular diastolic dysfunction^[1,2]. The impaired diastolic function can cause systolic dysfunction, and in severe cases, it will cause progressive and irreversible heart damage, which significantly affects the prognosis of breast cancer patients. Therefore, it is of great significance to evaluate the cardiac function in time to reduce the adverse effects of chemotherapeutic drugs on the heart. The expert consensus of European Association of Cardiovascular Imaging has pointed out that a reduction of left

ventricular ejection fraction (LVEF) of more than 10% can be used as a cutoff value for the diagnosis of cardiac toxicity related to chemotherapy^[3]. However, LVEF is not sensitive as an indicator for the early diagnosis of cardiac toxicity, which is not helpful for the early detection of the negative impact of chemotherapy drugs on patients' hearts. Left ventricular diastolic dysfunction usually occurs before systolic dysfunction. It is popular recently for detecting changes in left ventricular diastolic function to evaluate the cardiotoxicity caused by chemotherapy drugs. There are some methods to assess the left ventricular diastolic function, including echocardiographic indicators, two-dimensional (2D) ultrasound speckle tracking imaging, serum pro-B type natriuretic peptide (pro-BNP), and cardiac troponin. However, all these indicators have their shortcomings in the diastolic function assessment^[4-7]. New detection indicators are needed for a more accurate assessment of left ventricular diastolic function.

It is known that the left atrial volume (LAV) reveals the extent and duration of left ventricular diastolic perfusion pressure elevation. The American Echocardiographic Association guidelines suggest that LAV can be used for predicting impaired cardiac function^[8]. To date, real-time three-dimensional echocardiography (RT3DE) is feasible for measuring the irregular volume of the left atrium. RT3DE can independently observe the movements and volume changes of the left atrium^[9-11]. A study by Hatipoglu *et al*^[12] has shown that minimum LAV (LAVmin) and maximum LAV (LAVmax) are correlated with left ventricular diastolic blood pressure measured using cardiac catheters. Yamano *et al*^[13] found that different degrees of left ventricular diastolic dysfunction were related to the LAV index. However, these studies only focus on the relationship between LAV and left ventricular diastolic function. There are few studies analyzing the value of LAV in early predicting cardiac toxicity during chemotherapy.

The aim of this study was to preliminarily analyze the value of RT3DE-related indicators for early prediction of cardiac toxicity caused by chemotherapy among breast cancer patients, with a view to providing information for the adjustment of clinical medication schedule.

MATERIALS AND METHODS

Research participants

From March 2016 to March 2018, 107 female breast cancer patients aged 28 to 65 years who underwent surgical treatment and postoperative chemotherapy at Affiliated Hangzhou First People's Hospital, Zhejiang University School of Medicine were recruited. The inclusion criteria were: (1) Adult female breast cancer patients who were confirmed with invasive ductal carcinoma by pathology after surgery; (2) No previous history of other tumors; (3) Predicted survival time > 24 mo; and (4) No complications that significantly affected the ultrasound detection, such as thoracic deformity, obesity, spinal deformity, and respiratory diseases. The exclusion criteria were: (1) Patients with a history of diseases that could affect cardiac function, including congenital heart disease, hypertension, coronary heart disease, and myocarditis; (2) ECG, echocardiography, and other tests before chemotherapy revealed significant abnormal cardiac function; and (3) Patients received chemotherapy or radiation therapy previously. This study was approved by the ethics committee of Affiliated Hangzhou First People's Hospital, Zhejiang University School of Medicine, and all patients provided informed consent.

Research methods

Serological examination: Fasting venous blood was collected through the median cubital vein, and the supernatant was centrifuged for 5 min at 4 °C and 10000 rpm. The Vitros 5600 analyzer (Ortho Clinical Diagnostics, Johnson & Johnson, Buckinghamshire, United Kingdom) was used to detect cardiac troponin I (cTnI) and pro-brain natriuretic peptide (Pro-BNP).

RT3DE examination: A Philips IU Elite ultrasound diagnostic instrument (Philips Healthcare, Seattle, WA, United States) equipped with S5-1 probe (frequency 2.0-3.5 MHz) and X5-1 probe (frequency 2.0-3.5 MHz) was used to perform echocardiography examination on patients to obtain 2D and 3D ultrasound images and indicators. During the examination, the patient was placed in the left lateral position, and the ECG was recorded. Measurement of left ventricular diastolic diameter (LVDd), left atrial diameter (LAd), E/A peak of mitral valve blood flow spectrum (A peak: maximum peak velocity in late diastole, E peak: maximum peak velocity in early diastole), LVEF, E/ e' (e' peak: Mitral annulus lateral tissue Doppler), and left ventricular fraction shortening (LVFS) were obtained. Subsequently, RT3DE was

switched and a standard apex four-chamber view was obtained. A clear 3D image of the left atrium was collected in RT3DE mode (Figure 1). The QLab software 3DQa module was used for online analysis. With ECG as the reference standard, the LAV at the R wave position was defined as LAVmin. The LAV when the mitral valve was about to open was defined as LAVmax. The LAV before the start of the P wave was defined as LAVprep. LAEF (%) was calculated as (LAVmax-LAVmin) / LAVmax.

Patient treatment protocol: All patients underwent radical mastectomy and started to receive a combination of adriamycin-based chemotherapy on the 6th day after surgery. Doxorubicin was administered at a dose of 50 mg/m². Patients need to complete four chemotherapy cycles, with each chemotherapy interval of 21 d. 2D echocardiography, RT3DE, and serological examinations were performed on the first day after each chemotherapy course. According to the examination time point, there were five subgroups: T0 (before chemotherapy), T1, T2, T3, and T4.

Follow-up

All patients were followed after four times of chemotherapy. The follow-up time was set to 1 year from the start of chemotherapy. At the end of follow-up, the LVEFs of all the patients were examined using echocardiography. With $\Delta\text{LVEF} > 10\%$ ($\Delta\text{LVEF} = \text{LVEF}_{\text{before chemotherapy}} - \text{LVEF}_{\text{1st year after chemotherapy}}$) as the standard, the patients were included in a toxic group ($\Delta\text{LVEF} > 10\%$), and the remaining patients were included in a non-toxic group ($\Delta\text{LVEF} \leq 10\%$). The effects of 2D, RT3DE, and serological indicators on the prediction of cardiac toxicity in breast cancer patients receiving chemotherapy were analyzed (Figure 2).

Statistical methods

SPSS (version 22.0; SPSS Inc., Chicago, IL, United States) and Medcalc (Version 22.0.1; MedCalc Software, Ostend, Belgium) were used for statistical analyses. The numerical data are expressed as the mean \pm SD. Repeated-measures analysis of variance was used to study the factors influencing the patient's cardiotoxicity. Multivariate logistic regression was used to find independent risk factors for cardiotoxicity. Receiver operating characteristic (ROC) curve analysis was performed to analyze the diagnostic value of potential indicators in the diagnosis of cardiotoxicity caused by chemotherapy. Statistical significance was defined at 2-tailed $P < 0.05$ for all tests.

RESULTS

General data

A total of 107 breast cancer patients were included in this study. The average tumor size was 2.31 ± 0.92 cm. According to WHO classification, there were eight patients with grade 1 disease, 61 with grade 2, and 38 with grade 3. All patients were diagnosed with invasive ductal carcinoma of the breast, of whom 33 had lymph node metastasis. At the end of the follow-up, 14 patients were found to have a $\Delta\text{LVEF} > 10\%$ and included in a toxic group, and the remaining 93 patients were included in a non-toxic group. The incidence of cardiac toxicity after chemotherapy for breast cancer was 13.1%.

Comparison of routine detection indicators before and after chemotherapy in the toxic and non-toxic groups

In this study, we compared the changes in routine detection indicators (echocardiographic indicators, troponin, and pro-BNP) of breast cancer patients before and after chemotherapy in the toxic and non-toxic groups. According to the repeated measurement analysis of variance results, it was found that E/e', cTnI, and Pro-BNP showed an increasing trend under different chemotherapy cycles ($P_{\text{within group}} < 0.05$). There was no significant difference in the routine detection indicators between the toxic group and the non-toxic group ($P_{\text{between group}} > 0.05$). However, it is worth noting that the E/e', cTnI, and Pro-BNP in the toxic group were significantly higher than those in the non-toxic group at T4 of the chemotherapy cycle ($P < 0.05$). The interactions in the changes of E/e', cTnI, and Pro-BNP between the two groups under different chemotherapy cycles were valid ($P_{\text{interaction}} < 0.05$). The other routine detection indicators, including LAd, LVDd, mitral valve E/A, LVEF, ΔLVEF , and LVFS had no statistical significance in within-group comparison, between-group comparison, and interaction analysis ($P > 0.05$; Table 1).

Comparison of three-dimensional indicators of the left atrium before and after chemotherapy in the toxic and non-toxic groups

In this study, RT3DE was used to compare the changes in 3D indicators of the left

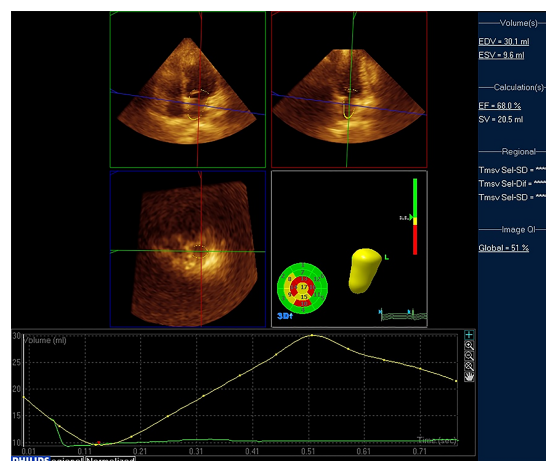


Figure 1 Real-time three-dimensional echocardiography examination of left atrial volume in a breast cancer patient undergoing chemotherapy.

atrium before and after chemotherapy in the toxic and non-toxic groups. The repeated analysis of variance analysis showed that LAVmin and LAVprep showed an increasing trend under different chemotherapy cycles ($P_{\text{within group}} < 0.05$). LAVmin and LAVprep in the toxic group were significantly larger than those in the non-toxic group ($P_{\text{between group}} < 0.05$). T3 LAVmin, T4 LAVmin, T3 LAVprep, and T4 LAVprep in the toxic group were larger than those in the non-toxic group, and the differences were statistically significant ($P < 0.05$). The interactions in the changes of LAVmin and LAVprep between the two groups under different chemotherapy cycles were valid (both $P_{\text{interaction}} < 0.05$). LAVmax and LAEF had no statistical significance in within-group comparison, between-group comparison, and interaction analysis ($P > 0.05$, Table 2).

Multivariate analysis of cardiac toxicity after chemotherapy in breast cancer patients

In this study, we performed multivariate logistic regression analysis on indicators with differences between the two groups to assess the predictive effect of these indicators on cardiac toxicity after breast cancer chemotherapy. The results showed that T4 E/e' had no significant effect on the occurrence of cardiac toxicity ($P > 0.05$). T4 cTnI, T4 Pro-BNP, T3 LAVmin, T4 LAVmin, T3 LAVprep, and T4 LAVprep had significant effects on cardiac toxicity ($P < 0.05$; Table 3).

Accuracy of potential indicators to predict cardiac toxicity after chemotherapy

ROC curve analysis was performed to further analyze the predictive accuracy of T4 cTnI, T4 Pro-BNP, T3 LAVmin, T4 LAVmin, T3 LAVprep, and T4 LAVprep for cardiac toxicity after chemotherapy. The results showed that T4 LAVmin had the highest area under the curve (AUC) for predicting cardiotoxicity (AUC = 0.947), suggesting that LAVmin at the 4th chemotherapy cycle can accurately predict cardiac toxicity in patients. The best diagnostic value was 21.2 mL, and the sensitivity and specificity were 78.57% and 94.62%, respectively. T4 LAVprep (AUC = 0.899) followed, but the AUC of T4 LAVprep was lower than 0.9. T3 LAVmin, T3 LAVprep, T4 cTnI, and T4 Pro-BNP had lower accuracy in predicting cardiac toxicity (AUC between 0.7-0.8) and could not be used to predict cardiac toxicity (Table 4 and Figure 3).

DISCUSSION

Cardiotoxicity caused by anthracycline chemotherapy drugs can obviously affect the prognosis of breast cancer patients. Early and accurate prediction of cardiac toxicity can effectively prevent the occurrence of cardiac toxicity. Left ventricular diastolic dysfunction usually occurs before systolic dysfunction, so the examination of left ventricular diastolic function can be utilized for early evaluation of cardiotoxicity caused by chemotherapy drugs. Heart biopsy is the gold standard for diagnosing heart injury, but its popularity is low as an invasive test^[14]. The tissue Doppler index E/e' can be used to evaluate changes in left ventricular diastolic function, but it has diagnostic value only when it is greater than 15^[15]. Although serological indicators are

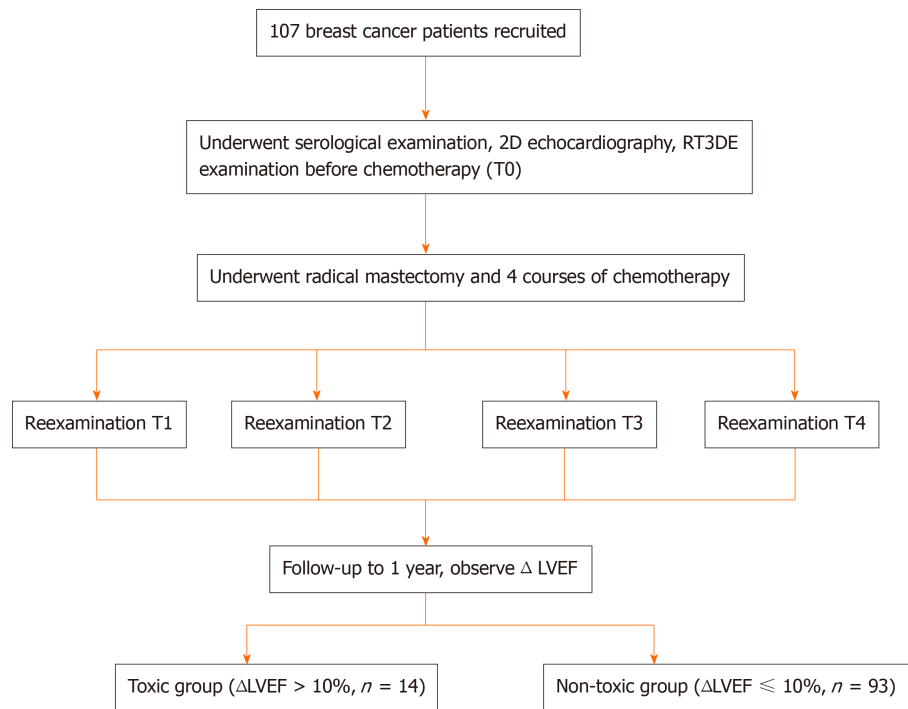


Figure 2 Flow chart of patient recruitment, examination, and grouping. LVEF: Left ventricular ejection fraction.

highly sensitive, studies by Christenson *et al*^[16] and Cao *et al*^[17] suggested that it was difficult to accurately reveal the changes of diastolic function merely relying on a single serological indicator, and the specificity was not high. Two-dimensional ultrasound speckle tracking imaging is one of the most sensitive methods for detecting left ventricular diastolic function, however, Leitman *et al*^[18] found that it was angularly dependent and had poor repeatability in practical applications. Three-dimensional ultrasound speckle tracking imaging is free of angle dependence, and can realize the strain analysis of the left ventricle segments. But it has the disadvantages of complicated operation and being difficult for promotion^[19]. Therefore, new methods need to be explored to help early predictions of impaired cardiac function. The left atrium volume indicates the extent and duration of the elevation of left ventricular diastolic perfusion pressure and can predict cardiac toxicity early. Recently, studies have used RT3DE technology to measure left atrial diastolic function to assess cardiac injury and arrhythmia^[20,21]. This technology can quickly obtain 3D information of the left atrium to assess early cardiac damage. However, its role in early prediction of chemotherapy-related cardiac toxicity is rare. Therefore, in this study, the left atrium data were examined by 2D echocardiography and RT3DE, and the 2D and 3D indicators of the left atrium during chemotherapy were used to predict the occurrence of chemotherapy-related cardiac toxicity in the early stage.

Since the cardiotoxicity generated by anthracyclines during chemotherapy is mostly in the subclinical stage, it is often difficult to detect the slight differences caused by heart damage due to the strong compensation mechanism of the heart^[22]. The results in this study showed that 2D echocardiographic indicators such as LAd, LVDd, mitral valve E/A, LVEF, Δ LVEF, and LVFS did not show significant differences before and after chemotherapy, indicating that traditional 2D indicators are not feasible for early prediction of cardiac toxicity, which is consistent with the research of Lotrionte *et al*^[23]. It is worth noting that the E/e' and serological indicators (cTnI and Pro-BNP) were different between the two groups, indicating that these indicators are more sensitive than traditional 2D ultrasound indicators and have potential for early diagnosis of cardiac toxicity. After screening by multivariate logistic regression analysis, only T4 cTnI and T4 Pro-BNP might independently predict cardiac toxicity in patients after chemotherapy. The reason may be that cTnI and Pro-BNP are markers of heart injury and are released into the blood when heart injury occurs. Hence, they are hopeful to be used to predict early heart injury, which is consistent with the studies of Srikanthan *et al*^[24] and Tian *et al*^[25]. ROC curve analysis results showed that although T4 cTnI and T4 Pro-BNP had the potential to predict cardiac toxicity, their accuracy was not high (AUC between 0.7-0.8). In addition, cTnI and Pro-BNP had the value of predicting cardiotoxicity only in the 4th chemotherapy

Table 1 Comparison of routine detection indicators before and after chemotherapy in the toxic and non-toxic groups

Routine de- tection in- dicator	Group	T0	T1	T2	T3	T4	$F_{\text{within group}}$	$P_{\text{within group}}$ value	$F_{\text{between group}}$	$P_{\text{between group}}$ value	$F_{\text{interaction}}$	$P_{\text{interaction}}$ value
LAd (mm)	Toxic	3.31 ± 0.46	3.34 ± 0.45	3.40 ± 0.57	3.37 ± 0.62	3.42 ± 0.89	0.921	0.401	1.111	0.332	1.442	0.241
	Non-toxic	3.21 ± 0.88	3.31 ± 0.69	3.20 ± 0.82	3.27 ± 0.92	3.23 ± 0.87						
LVDd (mm)	Toxic	4.39 ± 0.45	4.47 ± 0.62	4.45 ± 0.65	4.55 ± 0.58	4.61 ± 0.54	0.971	0.382	1.540	0.220	0.201	0.823
	Non-toxic	4.22 ± 0.63	4.21 ± 0.73	4.28 ± 0.89	4.30 ± 0.84	4.25 ± 0.93						
Mitral valve E/A	Toxic	1.34 ± 0.38	1.33 ± 0.37	1.31 ± 0.31	1.29 ± 0.41	1.27 ± 0.34	0.533	0.593	1.251	0.291	1.252	0.473
	Non-toxic	1.51 ± 0.51	1.44 ± 0.46	1.47 ± 0.52	1.43 ± 0.46	1.41 ± 0.51						
LVEF (%)	Toxic	64.92 ± 5.38	63.29 ± 6.39	63.27 ± 6.83	62.36 ± 6.90	62.39 ± 5.59	0.754	0.628	0.473	0.183	0.982	0.377
	Non-toxic	65.24 ± 6.49	65.37 ± 7.49	64.63 ± 6.72	63.93 ± 5.89	63.28 ± 7.39						
ΔLVEF (%)	Toxic	-	0.93 ± 0.31	1.38 ± 0.38	1.42 ± 0.33	2.39 ± 0.48	0.552	0.579	1.583	0.211	0.942	0.392
	Non-toxic	-	0.68 ± 0.35	1.09 ± 0.41	1.28 ± 0.52	2.01 ± 0.45						
LVFS (%)	Toxic	37.2 ± 3.4	37.4 ± 3.3	36.8 ± 2.9	36.7 ± 3.6	36.9 ± 3.1	0.764	0.472	1.622	0.203	0.740	0.481
	Non-toxic	36.8 ± 3.6	37.1 ± 3.5	37.4 ± 4.2	36.4 ± 3.8	36.5 ± 2.9						
E/e'	Toxic	6.36 ± 1.04	6.89 ± 1.38	7.02 ± 1.62	7.19 ± 1.48	7.82 ± 1.49 ^a	3.912	0.023	3.172	0.072	3.961	0.022
	Non-toxic	6.17 ± 1.67	6.53 ± 1.58	6.88 ± 1.49	7.08 ± 1.63	7.32 ± 1.73						
cTnI (μg/L)	Toxic	0.0231 ± 0.0106	0.0247 ± 0.0128	0.0256 ± 0.0193	0.0289 ± 0.0147	0.0422 ± 0.0166 ^a	5.201	0.007	2.974	0.084	4.123	0.019
	Non-toxic	0.0204 ± 0.0148	0.0226 ± 0.0175	0.0214 ± 0.0149	0.0218 ± 0.0128	0.0228 ± 0.0145						
Pro-BNP (ng/L)	Toxic	94.44 ± 19.39	95.92 ± 19.73	100.93 ± 21.49	112.38 ± 20.38	128.68 ± 22.29 ^a	5.573	0.005	3.063	0.082	4.452	0.014
	Non-toxic	91.29 ± 28.94	92.39 ± 31.29	94.92 ± 29.30	95.93 ± 28.39	97.11 ± 30.61						

^a $P < 0.05$. LAd: Left atrial diameter; LVDd: Left ventricular diastolic diameter; E/A: Maximum peak velocity in late diastole (A peak)/maximum peak velocity in early diastole (E peak); LVEF: Left ventricular ejection fraction; LVFS: Left ventricular fraction shortening; E/e': Maximum peak velocity in early diastole (E peak)/mitral annulus lateral tissue Doppler (e' peak); cTnI: Cardiac troponin I; Pro-BNP: Pro-brain natriuretic peptide.

cycle. At that time, the four courses of chemotherapy have ended, so they cannot guide the choice of chemotherapy dose in the course of chemotherapy.

RT3DE is capable of assessing the LAV, and has a high correlation with the evaluation results of CT and MRI^[26-29]. Therefore, it is expected to be used as a method for detecting cardiac toxicity. Hatipoglu *et al.*^[12] found that in evaluating cardiac function, the systolic RT3DE indicators were more sensitive than the diastolic indicators. This is because the indicators of the systole reveal the heart volume during systole. They are more indicative of the degree of compensatory dilatation of the heart than diastolic indicators. Similarly, this study also showed that RT3DE indicators (LAVmin and LAVprep) were more advantageous in assessing the degree of left atrial damage. Repeated measures analysis of variance showed that LAVmin and LAVprep showed an increase trend during the chemotherapy cycle, indicating that the left ventricular diastolic function decreased due to the cardiotoxic effects of chemotherapy drugs. LAVmin and LAVprep were different between the groups in this study. LAVmin and LAVprep at T3 in the toxic group were higher than those in the non-toxic group, and the difference appeared earlier than the traditional 2D ultrasound indicators, which suggests that LAVmin and LAVprep could be used for predicting heart injury earlier. Multivariate logistic regression analysis found that T3 LAVmin, T4 LAVmin, T3 LAVprep, and T4 LAVprep could independently predict the occurrence of cardiac toxicity. Although LAVmin and LAVprep showed differences at T3, the ROC curve analysis results showed that the AUCs of T3 LAVprep and T3 LAVmin were not high (0.808 and 0.753), which indicated that the RT3DE indicators in the 3rd chemotherapy cycle could only be used for approximate evaluation, and it was difficult to accurately predict cardiotoxicity. The results of this study showed that only T4 LAVmin and T4 LAVprep could accurately predict cardiac toxicity, because

Table 2 Comparison of three-dimensional parameters of the left atrium before and after chemotherapy in the toxic and non-toxic groups

Three-dimensional indicator	Group	T0	T1	T2	T3	T4	$F_{\text{within group}}$	$P_{\text{within group value}}$	$F_{\text{between group}}$	$P_{\text{between group value}}$	$F_{\text{interaction}}$	$P_{\text{interaction value}}$
LAVmin (mL)	Toxic	14.93 ± 2.07	16.93 ± 2.51	19.62 ± 2.07	21.94 ± 1.91 ^a	23.11 ± 2.04 ^a	5.201	0.007	4.533	0.013	10.072	0.000
	Non-toxic	14.73 ± 3.92	15.63 ± 3.29	17.39 ± 2.84	18.84 ± 2.72	17.96 ± 2.28						
LAVmax (mL)	Toxic	34.82 ± 4.96	35.11 ± 5.23	35.28 ± 5.28	36.82 ± 6.02	37.72 ± 7.62	2.941	0.057	2.563	0.082	2.792	0.066
	Non-toxic	32.18 ± 5.29	33.72 ± 6.28	34.13 ± 5.65	34.89 ± 5.39	35.27 ± 6.39						
LAVprep (mL)	Toxic	23.92 ± 5.29	24.29 ± 4.68	25.83 ± 5.17	27.99 ± 5.53 ^a	29.79 ± 4.40 ^a	4.713	0.011	5.063	0.008	8.391	0.000
	Non-toxic	22.88 ± 4.02	23.18 ± 3.79	23.69 ± 4.03	23.11 ± 4.18	22.89 ± 3.03						
LAEF (%)	Toxic	58 ± 8	58 ± 7	57 ± 8	56 ± 8	56 ± 7	1.240	0.294	1.731	0.182	1.582	0.211
	Non-toxic	60 ± 9	59 ± 8	59 ± 9	58 ± 8	57 ± 8						

^a $P < 0.05$. LAVmin: Minimum left atrial volume; LAVmax: Maximum left atrial volume; LAVprep: Left atrial volume before the start of the P wave; LAEF: Left atrial ejection fraction.

T4 LAVmin had the highest AUC for predicting cardiac toxicity (AUC = 0.947), followed by T4 LAVprep (AUC = 0.899), which were significantly better than traditional serological indicators (T4 cTnI and T4 Pro-BNP).

There were some shortcomings in this study. First of all, this study did not follow the delayed effects of cardiotoxicity for a long time. Cardiotoxic symptoms may be delayed and omitted in some patients. Second, the sample size of this study is small, and a larger, multi-center study is needed to provide useful information for the evaluation of the cardiotoxicity caused by chemotherapy drugs.

In conclusion, the RT3DE LAV indicators (LAVmin and LAVprep) of patients with cardiac toxicity in the early stage of chemotherapy show more significant changes compared to traditional detection indicators of the heart. LAV detected by RT3DE is the most accurate method for predicting cardiotoxicity caused by chemotherapy, and it is expected to be used to guide clinical adjustment of the dosage and schedule in time.

Table 3 Multivariate logistic regression analysis of cardiotoxicity in patients with breast cancer after chemotherapy

Indicator	B	S.E.	Wald	P value	OR	95%CI	
						Lower limit	Upper limit
T4 E/e'	0.250	0.204	2.183	0.125	1.284	0.861	1.915
T4 cTnI	0.733	0.317	5.024	0.025	2.081	1.118	3.874
T4 Pro-BNP	0.171	0.021	6.072	0.016	1.187	1.139	1.237
T3 LAVmin	0.387	0.021	9.024	0.003	1.472	1.413	1.534
T4 LAVmin	0.467	0.182	9.592	0.001	1.595	1.116	2.279
T3 LAVprep	0.290	0.017	8.815	0.005	1.336	1.292	1.381
T4 LAVprep	0.344	0.013	9.723	0.000	1.411	1.376	1.447

E/e': Maximum peak velocity in early diastole (E peak)/mitral annulus lateral tissue Doppler (e' peak); cTnI: Cardiac troponin I; Pro-BNP: Pro-brain natriuretic peptide; LAVmin: Minimum left atrial volume; LAVprep: Left atrial volume before the start of the P wave.

Table 4 Receiver operating characteristic curve analysis of potential indicators in predicting the cardiotoxicity after chemotherapy

Indicator	AUC	95%CI	Cut off point	Sensitivity (%)	Specificity (%)
T3LAVmin	0.808	0.721-0.878	20.1	85.71	65.59
T4LAVmin	0.947	0.886-0.981	21.2	78.57	94.62
T3LAVprep	0.753	0.660-0.831	30.1	50.00	97.85
T4LAVprep	0.899	0.826-0.949	24.4	100	66.67
T4cTnI	0.806	0.718-0.876	0.024	92.86	56.99
T4Pro-BNP	0.793	0.704-0.866	100.6	100	53.76

cTnI: Cardiac troponin I; Pro-BNP: Pro-brain natriuretic peptide; LAVmin: Minimum left atrial volume; LAVprep: Left atrial volume before the start of the P wave.

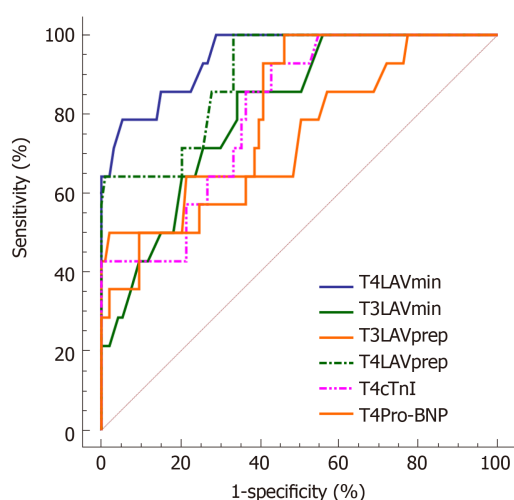


Figure 3 Receiver operating characteristic curve analysis of potential indicators in predicting the cardiotoxicity after chemotherapy. LAV: Left atrial volume; cTnI: Cardiac troponin I; Pro-BNP: Pro-brain natriuretic peptide; ROC: Receiver operating characteristics.

ARTICLE HIGHLIGHTS

Research background

Anthracycline chemotherapy drugs in breast cancer can increase the risk of cardiac toxicity. In order to prevent the occurrence of cardiac toxicity, early and accurate prediction of cardiac toxicity is helpful for adjusting the dosage during treatment. Current methods for detecting cardiotoxicity include echocardiographic indicators, two-dimensional ultrasound speckle tracking imaging, and serum natriuretic peptide. However, these methods have some

limitations. New methods need to be developed for early detection of cardiotoxicity caused by chemotherapy.

Research motivation

Increased left atrial volume is an early manifestation of cardiac toxicity. Real-time three-dimensional echocardiography (RT3DE) has made it possible to measure left atrial volume precisely. This method does not rely on the geometry of the left atrium, and can dynamically observe the movement and volume changes of the left atrium. But so far, most studies have only explored the relationship between left atrial volume and left ventricular diastolic function. Few studies measure left atrial volume to predict early cardiac toxicity by RT3DE.

Research objectives

To evaluate the RT3DE indicators during chemotherapy to observe changes in left atrium volume in breast cancer patients undergoing chemotherapy, and to assess whether such indicators can help early predict the occurrence of cardiac toxicity.

Research methods

All breast cancer patients underwent surgical treatment, and four cycles of chemotherapy (T1-T4) were routinely performed after surgery. Patients underwent two-dimensional, RT3DE, or serological examinations before and after each cycle of chemotherapy. Patients were included in either a toxic group ($\Delta\text{LVEF} > 10\%$) or a non-toxic group ($\Delta\text{LVEF} \leq 10\%$). Repeated measurement analysis of variance was used to compare changes in conventional echocardiographic indicators, serological indicators, and RT3DE indicators before and after treatment. Multivariate logistic regression was used to find independent influencing factors on cardiac toxicity. Receiver-operating characteristics (ROC) curve analysis was performed to analyze the predictive value for cardiotoxicity caused by chemotherapy.

Research results

The present study found that T4 cTnI, T4 Pro-BNP, T3 LAVmin, T4 LAVmin, T3 LAVprep, and T4 LAVprep had significant effects on cardiac toxicity, suggesting that LAVmin and LAVprep of RT3DE could be used to earlier predict the cardiotoxicity than other indicators. ROC curve analysis results showed that T4 LAVmin had the highest AUC for diagnosing cardiotoxicity (AUC = 0.947), followed by T4LAVprep (AUC = 0.899). In addition, T4 LAVmin and LAVprep were more accurate in predicting cardiac toxicity than T3 LAVmin and T3 LAVprep. These results indicated that the RT3DE index in the third chemotherapy cycle can only early alert the occurrence of cardiac toxicity, and it needs to be tested in the fourth cycle to accurately predict cardiac toxicity.

Research conclusions

The left atrial volume detected by RT3DE is the most accurate method for predicting cardiotoxicity caused by chemotherapy, and it is expected to be used to guide clinical adjustment of the dosage and schedule in time.

Research perspectives

Since the follow-up time is too short to accurately determine the patients with cardiotoxicity, cardiotoxic symptoms may be delayed and omitted in some patients. A larger, multi-center study should be conducted to provide useful information for the evaluation of the cardiotoxicity caused by chemotherapy drugs in the further study.

ACKNOWLEDGEMENTS

We wish to thank Professor Zhong Xiang who provided help for this study.

REFERENCES

- 1 **Rahmani H**, Shahriary A, Sheikhi MA, Ebadi A, Davoodzadeh H. Applications of cardiotoxicity in breast cancer: a meta-analysis. *Panminerva Med* 2017; **59**: 90-96 [PMID: 27314979 DOI: 10.23736/s0031-0808.16.03201-8]
- 2 **Martel S**, Maurer C, Lambertini M, Pondé N, De Azambuja E. Breast cancer treatment-induced cardiotoxicity. *Expert Opin Drug Saf* 2017; **16**: 1021-1038 [PMID: 28697311 DOI: 10.1080/14740338.2017.1351541]
- 3 **Khosrow-Khavar F**, Filion KB, Al-Qurashi S, Torabi N, Bouganin N, Suissa S, Azoulay L. Cardiotoxicity of aromatase inhibitors and tamoxifen in postmenopausal women with breast cancer: a systematic review and meta-analysis of randomized controlled trials. *Ann Oncol* 2017; **28**: 487-496 [PMID: 27998966 DOI: 10.1093/annonc/mdw673]
- 4 **Zymliński R**, Sokolski M, Siwolowski P, Biegus J, Nawrocka S, Jankowska EA, Todd J, Yerramilli R, Estis J, Banasiak W, Ponikowski P. Elevated troponin I level assessed by a new high-sensitive assay and the risk of poor outcomes in patients with acute heart failure. *Int J Cardiol* 2017; **230**: 646-652 [PMID: 28069251 DOI: 10.1016/j.ijcard.2017.01.012]
- 5 **Yuksel MA**, Alici Davutoglu E, Temel Yuksel I, Kucur M, Ekmekci H, Balci Ekmekci O, Uludag S, Uludag S, Madazli R. Maternal serum atrial natriuretic peptide (ANP) and brain-type natriuretic peptide (BNP) levels in gestational diabetes mellitus. *J Matern Fetal Neonatal Med* 2016; **29**: 2527-2530 [PMID: 27314979 DOI: 10.23736/s0031-0808.16.03201-8]

- 26445241 DOI: [10.3109/14767058.2015.1092958](https://doi.org/10.3109/14767058.2015.1092958)
- 6 **Roberts E**, Ludman AJ, Dworzynski K, Al-Mohammad A, Cowie MR, McMurray JJ, Mant J; NICE Guideline Development Group for Acute Heart Failure. The diagnostic accuracy of the natriuretic peptides in heart failure: systematic review and diagnostic meta-analysis in the acute care setting. *BMJ* 2015; **350**: h910 [PMID: [25740799](https://pubmed.ncbi.nlm.nih.gov/25740799/) DOI: [10.1136/bmj.h910](https://doi.org/10.1136/bmj.h910)]
- 7 **Fudim M**, Ambrosy AP, Sun JL, Anstrom KJ, Bart BA, Butler J, AbouEzzeddine O, Greene SJ, Mentz RJ, Redfield MM, Reddy YNV, Vaduganathan M, Braunwald E, Hernandez AF, Borlaug BA, Felker GM. High-Sensitivity Troponin I in Hospitalized and Ambulatory Patients With Heart Failure With Preserved Ejection Fraction: Insights From the Heart Failure Clinical Research Network. *J Am Heart Assoc* 2018; **7**: e010364 [PMID: [30561266](https://pubmed.ncbi.nlm.nih.gov/30561266/) DOI: [10.1161/jaha.118.010364](https://doi.org/10.1161/jaha.118.010364)]
- 8 **Lang RM**, Badano LP, Mor-Avi V, Afilalo J, Armstrong A, Ernande L, Flachskampf FA, Foster E, Goldstein SA, Kuznetsova T, Lancellotti P, Muraru D, Picard MH, Rietzschel ER, Rudski L, Spencer KT, Tsang W, Voigt JU. Recommendations for cardiac chamber quantification by echocardiography in adults: an update from the American Society of Echocardiography and the European Association of Cardiovascular Imaging. *Eur Heart J Cardiovasc Imaging* 2015; **16**: 233-270 [PMID: [25712077](https://pubmed.ncbi.nlm.nih.gov/25712077/) DOI: [10.1093/ehjci/jev014](https://doi.org/10.1093/ehjci/jev014)]
- 9 **Yang L**, Ma L, Li Y, Mu Y, Liu L. Real-time three-dimensional echocardiography of left atrial volume and function in patients with severe multi-vessel coronary artery disease. *J Med Ultrason (2001)* 2017; **44**: 71-78 [PMID: [27807689](https://pubmed.ncbi.nlm.nih.gov/27807689/) DOI: [10.1007/s10396-016-0754-5](https://doi.org/10.1007/s10396-016-0754-5)]
- 10 **Li Y**, Wang Y, Zhai Z, Guo X, Yang Y, Lu X. Real-Time Three-Dimensional Echocardiography to Assess Right Ventricle Function in Patients with Pulmonary Hypertension. *PLoS One* 2015; **10**: e0129557 [PMID: [26075788](https://pubmed.ncbi.nlm.nih.gov/26075788/) DOI: [10.1371/journal.pone.0129557](https://doi.org/10.1371/journal.pone.0129557)]
- 11 **Deng Y**, Guo SL, Su HY, Wang Q, Tan Z, Wu J, Zhang D. Left atrial asynchrony and mechanical function in patients with mitral stenosis before and immediately after percutaneous balloon mitral valvuloplasty: a real time three-dimensional echocardiography study. *Echocardiography* 2015; **32**: 291-301 [PMID: [24930760](https://pubmed.ncbi.nlm.nih.gov/24930760/) DOI: [10.1111/echo.12645](https://doi.org/10.1111/echo.12645)]
- 12 **Hatipoglu S**, Ozdemir N, Babur Guler G, Omaygenc MO, Bakal RB, Kahveci G, Unkun T, Sahin G, Kaymaz C. Left atrial expansion index is an independent predictor of diastolic dysfunction in patients with preserved left ventricular systolic function: a three dimensional echocardiography study. *Int J Cardiovasc Imaging* 2014; **30**: 1315-1323 [PMID: [24958524](https://pubmed.ncbi.nlm.nih.gov/24958524/) DOI: [10.1007/s10554-014-0476-y](https://doi.org/10.1007/s10554-014-0476-y)]
- 13 **Yamano M**, Yamano T, Iwamura Y, Nakamura T, Shiraishi H, Shirayama T, Matoba S. Impact of Left Ventricular Diastolic Property on Left Atrial Function from Simultaneous Left Atrial and Ventricular Three-Dimensional Echocardiographic Volume Measurement. *Am J Cardiol* 2017; **119**: 1687-1693 [PMID: [28363352](https://pubmed.ncbi.nlm.nih.gov/28363352/) DOI: [10.1016/j.amjcard.2017.02.002](https://doi.org/10.1016/j.amjcard.2017.02.002)]
- 14 **Francis R**, Lewis C. Myocardial biopsy: techniques and indications. *Heart* 2018; **104**: 950-958 [PMID: [29032361](https://pubmed.ncbi.nlm.nih.gov/29032361/) DOI: [10.1136/heartjnl-2017-311382](https://doi.org/10.1136/heartjnl-2017-311382)]
- 15 **Frikha Z**, Girerd N, Huttin O, Courand PY, Bozec E, Olivier A, Lamiral Z, Zannad F, Rossignol P. Reproducibility in echocardiographic assessment of diastolic function in a population based study (the STANISLAS Cohort study). *PLoS One* 2015; **10**: e0122336 [PMID: [25853818](https://pubmed.ncbi.nlm.nih.gov/25853818/) DOI: [10.1371/journal.pone.0122336](https://doi.org/10.1371/journal.pone.0122336)]
- 16 **Christenson ES**, James T, Agrawal V, Park BH. Use of biomarkers for the assessment of chemotherapy-induced cardiac toxicity. *Clin Biochem* 2015; **48**: 223-235 [PMID: [25445234](https://pubmed.ncbi.nlm.nih.gov/25445234/) DOI: [10.1016/j.clinbiochem.2014.10.013](https://doi.org/10.1016/j.clinbiochem.2014.10.013)]
- 17 **Cao L**, Zhu W, Wagar EA, Meng QH. Biomarkers for monitoring chemotherapy-induced cardiotoxicity. *Crit Rev Clin Lab Sci* 2017; **54**: 87-101 [PMID: [28013560](https://pubmed.ncbi.nlm.nih.gov/28013560/) DOI: [10.1080/10408363.2016.1261270](https://doi.org/10.1080/10408363.2016.1261270)]
- 18 **Leitman M**, Lysyansky P, Sidenko S, Shir V, Peleg E, Binenbaum M, Kaluski E, Krakover R, Vered Z. Two-dimensional strain-a novel software for real-time quantitative echocardiographic assessment of myocardial function. *J Am Soc Echocardiogr* 2004; **17**: 1021-1029 [PMID: [15452466](https://pubmed.ncbi.nlm.nih.gov/15452466/) DOI: [10.1016/j.echo.2004.06.019](https://doi.org/10.1016/j.echo.2004.06.019)]
- 19 **Saito K**, Okura H, Watanabe N, Hayashida A, Obase K, Imai K, Maehama T, Kawamoto T, Neishi Y, Yoshida K. Comprehensive evaluation of left ventricular strain using speckle tracking echocardiography in normal adults: comparison of three-dimensional and two-dimensional approaches. *J Am Soc Echocardiogr* 2009; **22**: 1025-1030 [PMID: [19556106](https://pubmed.ncbi.nlm.nih.gov/19556106/) DOI: [10.1016/j.echo.2009.05.021](https://doi.org/10.1016/j.echo.2009.05.021)]
- 20 **Wu VC**, Takeuchi M, Kuwaki H, Iwataki M, Nagata Y, Otani K, Haruki N, Yoshitani H, Tamura M, Abe H, Negishi K, Lin FC, Otsuji Y. Prognostic value of LA volumes assessed by transthoracic 3D echocardiography: comparison with 2D echocardiography. *JACC Cardiovasc Imaging* 2013; **6**: 1025-1035 [PMID: [24011776](https://pubmed.ncbi.nlm.nih.gov/24011776/) DOI: [10.1016/j.jcmg.2013.08.002](https://doi.org/10.1016/j.jcmg.2013.08.002)]
- 21 **Yaylali YT**, Saricopur A, Yurtas M, Senol H, Gokoz-Dogu G. Atrial Function in Patients with Breast Cancer After Treatment with Anthracyclines. *Arq Bras Cardiol* 2016; **107**: 411-419 [PMID: [27812678](https://pubmed.ncbi.nlm.nih.gov/27812678/) DOI: [10.5935/abc.20160146](https://doi.org/10.5935/abc.20160146)]
- 22 **Abecasis J**, Dourado R, Ferreira A, Saraiva C, Cavaco D, Santos KR, Morgado FB, Adragão P, Silva A. Left atrial volume calculated by multi-detector computed tomography may predict successful pulmonary vein isolation in catheter ablation of atrial fibrillation. *Europace* 2009; **11**: 1289-1294 [PMID: [19632980](https://pubmed.ncbi.nlm.nih.gov/19632980/) DOI: [10.1093/europace/eup198](https://doi.org/10.1093/europace/eup198)]
- 23 **Lotrionte M**, Cavarretta E, Abbate A, Mezzaroma E, De Marco E, Di Persio S, Loperfido F, Biondi-Zoccai G, Frati G, Palazzoni G. Temporal changes in standard and tissue Doppler imaging echocardiographic parameters after anthracycline chemotherapy in women with breast cancer. *Am J Cardiol* 2013; **112**: 1005-1012 [PMID: [23768465](https://pubmed.ncbi.nlm.nih.gov/23768465/) DOI: [10.1016/j.amjcard.2013.05.038](https://doi.org/10.1016/j.amjcard.2013.05.038)]
- 24 **Srikanthan K**, Klug R, Tirone M, Thompson E, Visweshwar H, Puri N, Shapiro J, Sodhi K. Creating a Biomarker Panel for Early Detection of Chemotherapy Related Cardiac Dysfunction in Breast Cancer Patients. *J Clin Exp Cardiol* 2017; **8**: 507 [PMID: [28642833](https://pubmed.ncbi.nlm.nih.gov/28642833/) DOI: [10.4172/2155-9880.1000507](https://doi.org/10.4172/2155-9880.1000507)]
- 25 **Tian S**, Hirshfield KM, Jabbour SK, Toppmeyer D, Haffty BG, Khan AJ, Goyal S. Serum biomarkers for the detection of cardiac toxicity after chemotherapy and radiation therapy in breast cancer patients. *Front Oncol* 2014; **4**: 277 [PMID: [25346912](https://pubmed.ncbi.nlm.nih.gov/25346912/) DOI: [10.3389/fonc.2014.00277](https://doi.org/10.3389/fonc.2014.00277)]
- 26 **Artang R**, Migrino RQ, Harmann L, Bowers M, Woods TD. Left atrial volume measurement with automated border detection by 3-dimensional echocardiography: comparison with Magnetic Resonance Imaging. *Cardiovasc Ultrasound* 2009; **7**: 16 [PMID: [19335908](https://pubmed.ncbi.nlm.nih.gov/19335908/) DOI: [10.1186/1476-7120-7-16](https://doi.org/10.1186/1476-7120-7-16)]
- 27 **Miyasaka Y**, Tsujimoto S, Maeba H, Yuasa F, Takehana K, Dote K, Iwasaka T. Left atrial volume by real-time three-dimensional echocardiography: validation by 64-slice multidetector computed tomography. *J Am Soc Echocardiogr* 2011; **24**: 680-686 [PMID: [21530166](https://pubmed.ncbi.nlm.nih.gov/21530166/) DOI: [10.1016/j.echo.2011.03.009](https://doi.org/10.1016/j.echo.2011.03.009)]
- 28 **Mor-Avi V**, Yodwut C, Jenkins C, Kühl H, Nesser HJ, Marwick TH, Franke A, Weinert L, Niel J,

- Steringer-Mascherbauer R, Freed BH, Sugeng L, Lang RM. Real-time 3D echocardiographic quantification of left atrial volume: multicenter study for validation with CMR. *JACC Cardiovasc Imaging* 2012; **5**: 769-777 [PMID: [22897989](#) DOI: [10.1016/j.jcmg.2012.05.011](#)]
- 29 **Rohner A**, Brinkert M, Kawel N, Buechel RR, Leibundgut G, Grize L, Kühne M, Bremerich J, Kaufmann BA, Zellweger MJ, Buser P, Osswald S, Handke M. Functional assessment of the left atrium by real-time three-dimensional echocardiography using a novel dedicated analysis tool: initial validation studies in comparison with computed tomography. *Eur J Echocardiogr* 2011; **12**: 497-505 [PMID: [21685196](#) DOI: [10.1093/ejehocard/jer066](#)]



Published by Baishideng Publishing Group Inc
7041 Koll Center Parkway, Suite 160, Pleasanton, CA 94566, USA
Telephone: +1-925-3991568
E-mail: bpgoffice@wjgnet.com
Help Desk: <https://www.f6publishing.com/helpdesk>
<https://www.wjgnet.com>

