



Mouse Models of Colorectal Cancer: Past, Present and Future



ALL

IMAGES

VIDEOS

关闭取词

32,000 Results

Any time ▾

## Cancer mouse models: Past, present and future - ScienceDirect

<https://www.sciencedirect.com/science/article/pii/S1084952114000743>

The development and advances in gene targeting technology over the **past** three decades has facilitated the generation of **cancer mouse models** that recapitulate features of human malignancies. These **models** have been and still remain instrumental in revealing the complexities of human **cancer** biology.

Cited by: 25

Author: Walid T. Khaled, Pentao Liu

Publish Year: 2014

## Colorectal Carcinoma: A General Overview and Future ...

<https://www.ncbi.nlm.nih.gov/pmc/articles/PMC5297828>

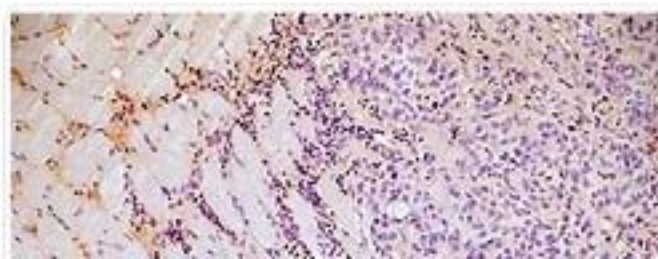
Jan 19, 2017 · The main risk **factor for colorectal cancer** is age: **past** the fifth decade of life, the risk of **developing CRC** is markedly increased, while the **onset of colorectal cancer** below the age of fifty is rare (apart from inherited **cancers**) . In addition to age, there are other inherent risk **factors** that cannot be **modified**.

Cited by: 200

Author: Inés Mármol, Cristina Sánchez-de-Diego,...

Publish Year: 2017

## Images of Mouse Models of Colorectal Cancer Past, present a...

<bing.com/images>



5 **Name of Journal:** *World Journal of Gastroenterology*

**Manuscript NO:** 53411

**Manuscript Type:** REVIEW

**Mouse models of colorectal cancer: Past, present and future perspectives**

Bürtin F *et al.* Mouse models of CRC

Florian Bürtin, Christina S Mullins, Michael Linnebacher

### Abstract

Colorectal cancer (CRC) is the third most common diagnosed malignancy among both sexes in the United States as well as in the European Union. While the incidence and mortality rates in western, high developed countries are declining, reflecting the success of screening programs and improved treatment regimen, a rise of the overall global CRC burden can be observed due to lifestyle changes paralleling an increasing human development index. Despite a growing insight into the biology of CRC and many therapeutic improvements in the recent decades, preclinical *in vivo* models are still indispensable for the development of new treatment approaches. Since the development of carcinogen-induced rodent models for CRC more than 80 years ago,

### Match Overview

1	<b>Internet</b> 20 words crawled on 29-May-2016 <a href="http://conservancy.umn.edu">conservancy.umn.edu</a>	<1%
2	<b>Internet</b> 18 words crawled on 23-Jan-2020 <a href="http://cancerres.aacrjournals.org">cancerres.aacrjournals.org</a>	<1%
3	<b>Internet</b> 15 words crawled on 06-Dec-2019 <a href="http://www.tandfonline.com">www.tandfonline.com</a>	<1%
4	<b>Crossref</b> 13 words <a href="#">M Nakayama, E Sakai, K Echizen, Y Yamada, H Oshima, T -S Han, R Ohki, S Fujii, A Ochiai, S Robine, D C Voon, T T</a>	<1%
5	<b>Internet</b> 13 words crawled on 16-May-2019 <a href="http://f6publishing.blob.core.windows.net">f6publishing.blob.core.windows.net</a>	<1%
6	<b>Crossref</b> 12 words <a href="#">Janssen, K.P.. "Mouse models of K-ras-initiated carcinogenesis", BBA - Reviews on Cancer, 20051125</a>	<1%
7	<b>Crossref</b> 12 words <a href="#">Todd Pearson. "Creation of "Humanized" Mice to Study ... uman Immunity", Current Protocols in Immunology, 05/20</a>	<1%
8	<b>Internet</b> 12 words crawled on 03-Dec-2010 <a href="http://www.micab.umn.edu">www.micab.umn.edu</a>	<1%
9	<b>Crossref</b> 12 words <a href="#">Molecular Pathogenesis of Colorectal Cancer, 2013.</a>	<1%
10	<b>Internet</b> 12 words crawled on 10-Mar-2019 <a href="http://www.licor.com">www.licor.com</a>	<1%



ALL

IMAGES

VIDEOS

35,700 Results

Any time ▾

## Cancer mouse models: Past, present and future - ScienceDirect

<https://www.sciencedirect.com/science/article/pii/S1084952114000743>

The development and advances in gene targeting technology over the **past** three decades has facilitated the generation of **cancer mouse models** that recapitulate features of human malignancies. These **models** have been and still remain instrumental in revealing the complexities of human **cancer** biology.

**Cited by:** 25

**Author:** Walid T. Khaled, Pentao Liu

**Publish Year:** 2014

## Colorectal Carcinoma: A General Overview and Future ...

<https://www.ncbi.nlm.nih.gov/pmc/articles/PMC5297828>

Jan 19, 2017 · The main risk **factor for colorectal cancer** is age: **past** the fifth decade of life, the risk of **developing CRC** is markedly increased, while the **onset of colorectal cancer** below the age of fifty is rare (apart from inherited **cancers**) . In addition to age, there are other inherent risk **factors** that cannot be **modified**.

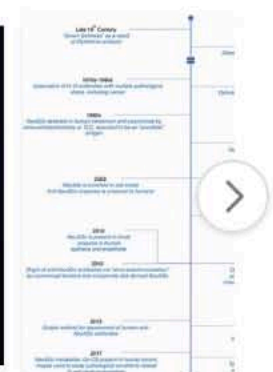
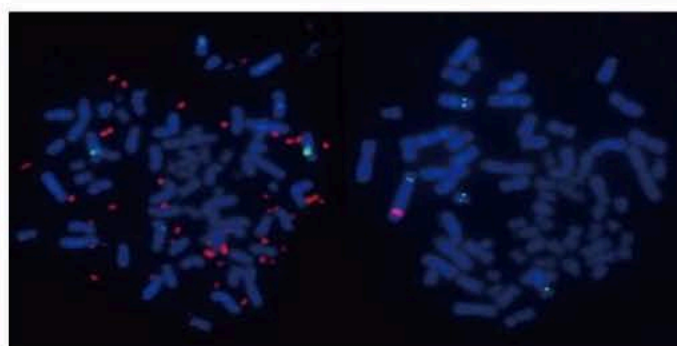
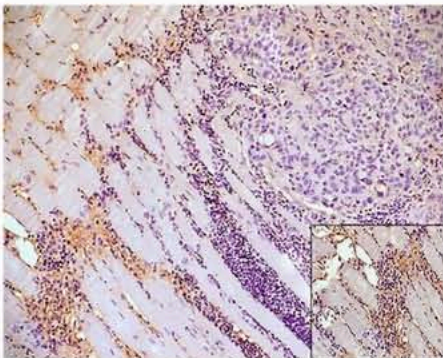
**Cited by:** 200

**Author:** Inés Mármol, Cristina Sánchez-de-Die...

**Publish Year:** 2017

## Images of Mouse Models of Colorectal Cancer Past, present and fut...

<bing.com/images>



See more images of Mouse Models of Colorectal Cancer Past, present and future perspectives



Mouse models of colorectal cancer: Past, present and fut



YJ



ALL

IMAGES

VIDEOS

35,600 Results

Any time ▾

## Cancer mouse models: Past, present and future - ScienceDirect

<https://www.sciencedirect.com/science/article/pii/S1084952114000743>

The development and advances in gene targeting technology over the **past** three decades has facilitated the generation of **cancer mouse models** that recapitulate features of human malignancies. These **models** have been and still remain instrumental in revealing the complexities of human **cancer** biology.

Cited by: 25

Author: Walid T. Khaled, Pentao Liu

Publish Year: 2014

## Images of Mouse Models of Colorectal Cancer Past, present a...

<bing.com/images>

