

# World Journal of *Gastroenterology*

*World J Gastroenterol* 2020 June 21; 26(23): 3118-3317



**OPINION REVIEW**

- 3118** Liver-directed therapies for liver metastases from neuroendocrine neoplasms: Can laser ablation play any role?  
*Sartori S, Bianchi L, Di Vece F, Tombesi P*

**REVIEW**

- 3126** Review of primary sclerosing cholangitis with increased IgG4 levels  
*Manganis CD, Chapman RW, Culver EL*
- 3145** Early exposure to food contaminants reshapes maturation of the human brain-gut-microbiota axis  
*Sarron E, Pérot M, Barbezier N, Delayre-Orthez C, Gay-Quéheillard J, Anton PM*
- 3170** Potential of the ellagic acid-derived gut microbiota metabolite – Urolithin A in gastrointestinal protection  
*Kujawska M, Jodynis-Liebert J*
- 3182** Neuromechanism of acupuncture regulating gastrointestinal motility  
*Yu Z*

**MINIREVIEWS**

- 3201** Endosonographic diagnosis of advanced neoplasia in intraductal papillary mucinous neoplasms  
*Eiterman A, Lahooti A, Krishna SG*
- 3213** Endoscopic ultrasound-guided injective ablative treatment of pancreatic cystic neoplasms  
*Du C, Chai NL, Linghu EQ, Li HK, Feng XX*

**ORIGINAL ARTICLE****Basic Study**

- 3225** Sodium glucose co-transporter 2 inhibition reduces succinate levels in diabetic mice  
*Herat LY, Ward NC, Magno AL, Rakoczy EP, Kiuchi MG, Schlaich MP, Matthews VB*
- 3236** Neoadjuvant chemoradiation changes podoplanin expression in esophageal cancer patients  
*Warnecke-Eberz U, Plum P, Schweinsberg V, Drebbler U, Bruns CJ, Müller DT, Hölscher AH, Bollschweiler E*

**Retrospective Cohort Study**

- 3249** Medications in type-2 diabetics and their association with liver fibrosis  
*Siddiqui MT, Amin H, Garg R, Chadavalada P, Al-Yaman W, Lopez R, Singh A*

- 3260** Pancreatic necrosis and severity are independent risk factors for pancreatic endocrine insufficiency after acute pancreatitis: A long-term follow-up study  
*Yu BJ, Li NS, He WH, He C, Wan JH, Zhu Y, Lu NH*

#### Clinical Trials Study

- 3271** Rapid rehabilitation technique with integrated traditional Chinese and Western medicine promotes postoperative gastrointestinal function recovery  
*Cao LX, Chen ZQ, Jiang Z, Chen QC, Fan XH, Xia SJ, Lin JX, Gan HC, Wang T, Huang YX*

#### Observational Study

- 3283** Impact of a national basic skills in colonoscopy course on trainee performance: An interrupted time series analysis  
*Siau K, Hodson J, Anderson JT, Valori R, Smith G, Hagan P, Iacucci M, Dunckley P*
- 3293** Consensus on the definition of colorectal anastomotic leakage: A modified Delphi study  
*van Hulsdingen CP, Jongen AC, de Jonge WJ, Bouvy ND, Derikx JP*

#### META-ANALYSIS

- 3304** Value of intravoxel incoherent motion in detecting and staging liver fibrosis: A meta-analysis  
*Ye Z, Wei Y, Chen J, Yao S, Song B*

**ABOUT COVER**

Editorial Board Member of *World Journal of Gastroenterology*, Simon Bramhall, FRCS (Gen Surg), MD, Attending Doctor, Surgeon, Consultant Upper GI/HPB Surgeon, The County Hospital, Union Walk, Hereford HR1 2ER, United Kingdom

**AIMS AND SCOPE**

The primary aim of *World Journal of Gastroenterology* (WJG, *World J Gastroenterol*) is to provide scholars and readers from various fields of gastroenterology and hepatology with a platform to publish high-quality basic and clinical research articles and communicate their research findings online.

WJG mainly publishes articles reporting research results and findings obtained in the field of gastroenterology and hepatology and covering a wide range of topics including gastroenterology, hepatology, gastrointestinal endoscopy, gastrointestinal surgery, gastrointestinal oncology, and pediatric gastroenterology.

**INDEXING/ABSTRACTING**

The WJG is now indexed in Current Contents®/Clinical Medicine, Science Citation Index Expanded (also known as SciSearch®), Journal Citation Reports®, Index Medicus, MEDLINE, PubMed, PubMed Central, and Scopus. The 2019 edition of Journal Citation Report® cites the 2018 impact factor for WJG as 3.411 (5-year impact factor: 3.579), ranking WJG as 35<sup>th</sup> among 84 journals in gastroenterology and hepatology (quartile in category Q2). CiteScore (2018): 3.43.

**RESPONSIBLE EDITORS FOR THIS ISSUE**

Responsible Electronic Editor: *Yu-Jie Ma*  
Proofing Production Department Director: *Xiang Li*  
Responsible Editorial Office Director: *Ze-Mao Gong*

**NAME OF JOURNAL**

*World Journal of Gastroenterology*

**ISSN**

ISSN 1007-9327 (print) ISSN 2219-2840 (online)

**LAUNCH DATE**

October 1, 1995

**FREQUENCY**

Weekly

**EDITORS-IN-CHIEF**

Subrata Ghosh, Andrzej S Tarnawski

**EDITORIAL BOARD MEMBERS**

<http://www.wjgnet.com/1007-9327/editorialboard.htm>

**PUBLICATION DATE**

June 21, 2020

**COPYRIGHT**

© 2020 Baishideng Publishing Group Inc

**INSTRUCTIONS TO AUTHORS**

<https://www.wjgnet.com/bpg/gerinfo/204>

**GUIDELINES FOR ETHICS DOCUMENTS**

<https://www.wjgnet.com/bpg/GerInfo/287>

**GUIDELINES FOR NON-NATIVE SPEAKERS OF ENGLISH**

<https://www.wjgnet.com/bpg/gerinfo/240>

**PUBLICATION ETHICS**

<https://www.wjgnet.com/bpg/GerInfo/288>

**PUBLICATION MISCONDUCT**

<https://www.wjgnet.com/bpg/gerinfo/208>

**ARTICLE PROCESSING CHARGE**

<https://www.wjgnet.com/bpg/gerinfo/242>

**STEPS FOR SUBMITTING MANUSCRIPTS**

<https://www.wjgnet.com/bpg/GerInfo/239>

**ONLINE SUBMISSION**

<https://www.f6publishing.com>



## Basic Study

# Neoadjuvant chemoradiation changes podoplanin expression in esophageal cancer patients

Ute Warnecke-Eberz, Patrick Plum, Viola Schweinsberg, Uta Drebbler, Christiane J Bruns, Dolores T Müller, Arnulf H Hölscher, Elfriede Bollschweiler

**ORCID number:** Ute Warnecke-Eberz (0000-0002-2833-5633); Patrick Plum (0000-0002-8165-4553); Viola Schweinsberg (0000-0003-1375-2386); Uta Drebbler (0000-0002-2697-4685); Christiane J Bruns (0000-0001-6590-8181); Dolores T Müller (0000-0002-1833-5664); Arnulf H Hölscher (0000-0002-8207-3865); Elfriede Bollschweiler (0000-0003-2442-8397).

**Author contributions:** Warnecke-Eberz U, Bollschweiler E designed the study; Warnecke-Eberz U, Hölscher AH coordinated the study; Schweinsberg V performed the experiments; Warnecke-Eberz U, Bollschweiler E acquired, analysed and interpreted the data; Drebbler U did the pathological evaluation and scoring of protein staining; Warnecke-Eberz U, Bollschweiler E, Plum P wrote the manuscript; Müller DT supported writing of manuscript; Bruns CJ supported data interpretation.

### Institutional review board

**statement:** The use of human tissue samples and clinical data was approved by the ethics committee of the University Hospital of Cologne (Germany), all patients provided signed informed consent, and the research was carried out in accordance with the Helsinki Declaration.

**Conflict-of-interest statement:** The authors disclose any conflicts of interests.

**Data sharing statement:** No additional data are available.

**Ute Warnecke-Eberz, Patrick Plum, Christiane J Bruns, Dolores T Müller, Elfriede Bollschweiler,** Department of General, Visceral and Cancer Surgery, University Hospital of Cologne, Cologne 50937, Germany

**Viola Schweinsberg,** Department of Dermatology, University Hospital of Cologne, Cologne 50937, Germany

**Uta Drebbler,** Institute of Pathology, University Hospital of Cologne, Cologne 50937, Germany

**Arnulf H Hölscher,** Agaplesion Markus Hospital, Frankfurt 60431, Germany

**Corresponding author:** Ute Warnecke-Eberz, PhD, Professor, Department of General, Visceral and Cancer Surgery, University Hospital of Cologne, Kerpener Str. 62, Cologne 50937, Germany. [ute.warnecke-eberz@uk-koeln.de](mailto:ute.warnecke-eberz@uk-koeln.de)

## Abstract

### BACKGROUND

Locally advanced adenocarcinoma of the esophagus (EAC) and squamous cell carcinoma (ESCC) result in a worse prognosis. Neoadjuvant treatment improves survival, however, only for responders. The transmembrane glycoprotein podoplanin is overexpressed in squamous cell carcinomas, miRNA-363 is associated to its regulation in head and neck cancer.

### AIM

To predict therapy response and prognosis markers, and targets for novel therapies would individualize treatments leading to more favourable outcomes.

### METHODS

Expression of podoplanin protein has been visualized by immunohistochemistry in surgical specimens of 195 esophageal cancer patients who underwent transthoracic esophagectomy: 90 ESCC and 105 EAC with clinical T2-3, Nx, M0. One hundred and six patients received neoadjuvant chemoradiation. RNA was extracted from paraffin-embedded tissue, and miRNA-363 quantified by real-time TaqMan-real-time-PCR. D2-40 mab staining of > 5% was scored as high podoplanin expression (HPE). We related podoplanin and miRNA-363 expression to histopathologic response after neoadjuvant treatment and clinicopathological characteristics, such as histological tumor type, survival rate or clinical tumor category.

### RESULTS

**Open-Access:** This article is an open-access article that was selected by an in-house editor and fully peer-reviewed by external reviewers. It is distributed in accordance with the Creative Commons Attribution NonCommercial (CC BY-NC 4.0) license, which permits others to distribute, remix, adapt, build upon this work non-commercially, and license their derivative works on different terms, provided the original work is properly cited and the use is non-commercial. See: <http://creativecommons.org/licenses/by-nc/4.0/>

**Manuscript source:** Invited manuscript

**Received:** December 30, 2019

**Peer-review started:** December 30, 2019

**First decision:** January 19, 2020

**Revised:** April 20, 2020

**Accepted:** May 30, 2020

**Article in press:** May 30, 2020

**Published online:** June 21, 2020

**P-Reviewer:** Hashimoto N, Surucu E

**S-Editor:** Dou Y

**L-Editor:** A

**E-Editor:** Ma YJ



We confirmed expression of membrane-bound podoplanin in 90 ESCC patients. 26% showed HPE of > 5%. In addition, absence in EAC patients (only 2% with HPE) was shown. Lower podoplanin expression has been detected in resection-specimen of 58 ESCC patients after neoadjuvant (RTx/CTx) treatment, only 11% with HPE, compared to 50% HPE of 32 non-pretreated primary surgery patients,  $P = 0.0001$ . This difference of podoplanin expression was confirmed comparing pre-treatment biopsies with matching post-treatment surgical specimens,  $P < 0.001$ . Podoplanin has been identified as a prognostic marker in 32 patients that underwent primary surgery without neoadjuvant treatment. Low (0-5%) podoplanin expression was associated with better prognosis compared to patients with HPE,  $P = 0.013$ . Podoplanin expression has been associated with post-transcriptional regulation by miRNA-363. At a cut-off value of miR-363 < 7, lower miR-363 expression correlated with HPE in surgical tissue specimens of primary surgery patients,  $P = 0.013$ . Therefore, ESCC patients with miRNA-363 expression < 7 had a worse prognosis than patients expressing miRNA-363  $\geq 7$ ,  $P = 0.049$ .

## CONCLUSION

Analysis of the molecular process that leads to decrease in podoplanin expression during neoadjuvant treatment and its regulation may provide novel markers and targets to improve targeted therapy of ESCC.

**Key words:** Esophageal cancer; Response prediction; Prognosis; D2-40; Posttranscriptional regulation; miRNA-363

©The Author(s) 2020. Published by Baishideng Publishing Group Inc. All rights reserved.

**Core tip:** Podoplanin is an oncofetal membrane protein, re-expressed in squamous cell carcinoma of the esophagus. Podoplanin expression seems to be, among others, controlled by miR-363. Chemoradiation results in reduction of podoplanin protein expression, and furthermore, podoplanin is a prognostic factor for survival. This implicates that a decrease of podoplanin might become a therapeutic option.

**Citation:** Warnecke-Eberz U, Plum P, Schweinsberg V, Drebber U, Bruns CJ, Müller DT, Hölscher AH, Bollschweiler E. Neoadjuvant chemoradiation changes podoplanin expression in esophageal cancer patients. *World J Gastroenterol* 2020; 26(23): 3236-3248

**URL:** <https://www.wjgnet.com/1007-9327/full/v26/i23/3236.htm>

**DOI:** <https://dx.doi.org/10.3748/wjg.v26.i23.3236>

## INTRODUCTION

Esophageal squamous cell- (ESCC) and adenocarcinoma (EAC) are common malignancies worldwide<sup>[1]</sup>. EAC is the most rapidly increasing cancer in the Western world, thus ESCC no longer represents the most prevalent histological subtype<sup>[2]</sup>. These two tumor types differ in risk factors and biological characteristics<sup>[3,4]</sup>.

The poor prognosis of patients with locally advanced cancer encouraged the assessment of neoadjuvant treatment strategies to improve patients' survival<sup>[5]</sup>. Since only responders, 40% to 50% of all patients profit by better survival, after going through the burden of chemoradiation, we urgently need markers predicting response prior to therapy<sup>[6,7]</sup>. The molecular predictive factors previously identified, failed translation to clinical application<sup>[8-10]</sup>. There is an additional need for markers indicating tumor progression and prognosis. Putative markers include growth-factor receptors, enzymes of angiogenesis, tumor suppressor genes, cell cycle regulators, enzymes involved in DNA repair, apoptosis and in degradation of extracellular matrix<sup>[11-13]</sup>. In addition to predictive and prognostic markers, novel targets for therapy are imperative for the future approach of a tailored multimodality treatment and its surveillance.

Podoplanin is a mucin-type transmembrane glycoprotein, thought to be one of the cancer stem cell markers for squamous-cell carcinoma in several tumor entities, including esophageal cancer<sup>[14]</sup>. Podoplanin has been identified as a platelet aggregation-inducing factor and a specific marker for lymphatic vessels<sup>[15,16]</sup>. It has



been shown to stimulate invasion and migration of tumor cells and was correlated to lymph node metastasis, disease stage, lymphatic and vascular invasion, recurrence and poor prognosis<sup>[17]</sup>.

MicroRNAs are small non-coding RNAs that act post-transcriptionally as master regulators for a variety of mRNA targets by sequence homology<sup>[18,19]</sup>. miR-363 has been reported to be deregulated in several tumors and has been associated with podoplanin expression<sup>[20]</sup>. Knowledge about regulation of podoplanin expression in esophageal cancer is scarce. The mechanism of re-expression of podoplanin in tumor cells of ESCC still has to be elucidated.

The aim of the present study was to determine expression of podoplanin protein in esophageal cancer patients with regard to a potential benefit for personalization of neoadjuvant treatment of esophageal carcinoma. We evaluated its predictive impact for therapy response and prognosis and a potential association of post-transcriptional regulation by miR-363 as one mechanism of deregulation of podoplanin expression in cancer.

## MATERIALS AND METHODS

### *Patients, demographic data, and neoadjuvant therapy regime*

One hundred and ninety-five patients with advanced esophageal cancer (clinical T2-3, Nx, M0) who received transthoracic esophagectomy are characterized in **Table 1**. Matching endoscopic biopsies and resection tissue were available for 56 primary surgery ESCC patients. Paraffin-embedded tissue for RNA extraction and quantification of miR-363 expression in addition to podoplanin protein were available for 29 ESCC patients and 19 EAC patients who received primary surgery.

Endoscopic biopsies were obtained during routine staging esophagogastroduodenoscopy prior to therapy. None of the patients had received prior radio- and /or chemotherapy. One hundred and six patients of the study population with an advanced tumor stage (cT3, Nx, M0) received preoperative chemoradiation. Briefly, cisplatin (20 mg/m<sup>2</sup> per day) was administered as a short-term infusion on days 1-5 and 5-fluorouracil (5-FU) (1000mg/m<sup>2</sup> per day) as a continuous infusion over 24 h on days 1-5. Radiation was delivered in daily fractions of 1.8 Gy to a total dose of 40 Gy using a multiple field technique. Standardized trans-thoracic *en bloc* esophagectomy with 2-field lymphadenectomy was performed 4-5 wk after completion of chemoradiation.

Informed consent was obtained from each patient and the scientific protocol was approved by the local ethics committee.

### *Histopathologic response classification*

The degree of histomorphologic regression of the primary tumor was classified into four categories (Cologne Regression Scale): Grade 1, complete response; Grade 2, nearly complete response with less than 10% vital residual tumor cells (VRTCs) classified as major response; Grade 3, 10% to 50% VRTCs; and Grade 4, more than 50% VRTCs, categorized as minor histomorphologic response<sup>[21]</sup>. Classification has been performed by experienced staff pathologists.

### *Immunohistochemistry*

Podoplanin protein was detected by mouse anti-human D2-40 monoclonal antibody (DakoCytomation, Hamburg, Germany) raised against 40 kDa O-linked sialoglycoprotein. Paraffin embedded endoscopic biopsies and surgical specimens have been analyzed. Five µm sections were cut and deparaffinized according to standard histological techniques. A high sensitivity immunohistochemical staining was performed applying Dako EnVision System (DakoCytomation, Hamburg,) following the manufacturer's instructions. In brief, sections were covered with citrate buffer (pH 6.0) for antigen retrieval. Endogenous peroxidase was blocked by 0.3% hydrogen peroxide for 20 min. Sections were covered by 100 µL mouse monoclonal D2-40 primary antibody (D2-40 mouse monoclonal antibody, Lot.Nr:10066658; DakoCytomation, Hamburg) at a dilution of 1:100 and incubated at 4°C overnight. The nuclei have been counterstained with hematoxylin. The staining procedure without a primary antibody was used as a negative control. For quantification of podoplanin expression a scoring system was applied by a pathologist. Score 1: 0-5% tumor cells stained by D2-40 mab; Score 2: 6%-35% of tumor cells stained; Score 3: 36%-65%; Score 4: > 65%.

### *miRNA isolation from paraffin-embedded tissue*

Paraffin embedded resection specimen of EAC and ESCC have been selected from the Institute of Pathology, University Hospital of Cologne, Germany. Tissues were fixed

**Table 1** Demographics, therapy and prognosis of esophageal cancer patients

	Total		ESCC		EAC	
	<i>n</i>	5Y-SR (%)	<i>n</i>	5Y-SR (%)	<i>n</i>	5Y-SR (%)
Total study cohort	195	27	90	27	105	26
Median age (yr)	60.4	-	60	-	62	-
Gender						
Male	155	28	61	25	94	31
Female	40	26	29	32	11	12
Therapy						
Surgery only	89	29	32	27	57	31
RTx/CTx + surgery	106	27	58	27	48	28
T-category						
pT2	30	46	6	62	24	43
cT/pT3	165	25	84	24	81	26
Endoscopic biopsy	104	25	58	22	46	29

5Y-SR: 5-year survival rate; EAC: Adenocarcinoma of the esophagus; ESCC: Squamous cell carcinoma of the esophagus; pT: Pathologic tumor; cT: Clinical tumor category; RTx/CTx: Neoadjuvant radio-/chemotherapy.

in 10% buffered formalin prior to embedding in paraffin. Histological sections of 5- $\mu$ m thickness were cut from each tissue block using a microtome. About 60  $\mu$ m tissues per patient have been applied for total RNA extraction after macrodissection of the tumor area and purified by miRNeasy FFPE kit (Qiagen, Hilden), according to the protocol of the manufacturer. Samples have been lysed by Proteinase-K and treated with DNase-I. Concentrated RNA was purified using RNeasy MinElute spin columns and eluted by 12  $\mu$ L of nuclease-free H<sub>2</sub>O.

#### **miRNA reverse transcription and real-time PCR quantification**

Reverse transcription of miR-363 from total RNA was performed using miR-363 specific reverse primer Assay-ID hsa-miR-363 001271 and TaqMan MicroRNA reverse transcription kit, Thermo Fisher Scientific, Darmstadt.

Quantification has been performed by TaqMan7900HT real-time PCR system Thermo Fisher Scientific, Darmstadt, RNU6 was used as a calibrator. The 15  $\mu$ L RT-reaction included 5  $\mu$ L RNA, 3  $\mu$ L reverse primer, 1  $\mu$ L MultiScribe™ Reverse Transcriptase, 0.15  $\mu$ L dNTP mixture, 0.19  $\mu$ L RNase inhibitor, 1.5  $\mu$ L RT-buffer, 4.16  $\mu$ L nuclease-free H<sub>2</sub>O: 2 min 50 °C, 10 min 95 °C, 15 s 95 °C, and 1 min 60°C. TaqMan PCR analysis provided relative quantification of miR-363 expression related to expression of snoU6 as an endogenous control.

#### **Statistical analysis**

Fisher's exact test or Chi-Square test have been used to evaluate the correlation between scored podoplanin expression and histological tumor category (ESCC *vs* EAC). Significance of correlation between podoplanin expression and clinicopathological characteristics (pTNM-category), or different therapies was determined. Categorical data of paired samples has been compared by McNemer test. Survival curves based on post-therapeutic podoplanin-expression in ESCC have been estimated according to Kaplan-Meier and compared with the Log-Rank test.

TaqMan PCR analysis provided relative quantification of miR-363 expression /expression of reference RNA snoU6. Receiver operating characteristic curve analysis has been used to define an optimal cut-off value for miR-363 in relation to podoplanin expression. Statistical calculations of prognosis were performed using MedCalc Statistical Software version 17.9.6 (MedCalc Software bvba, Ostend, Belgium); <http://www.medcalc.org>; 2017. Other statistical analyses were carried out using SPSS version 25 (Chicago, IL, United States).

## **RESULTS**

#### **Podoplanin expression in ESCC and EAC patients**

Podoplanin staining of resected specimen derived from patients without preoperative chemoradiation revealed 56 of 57 EAC patients (98%) with none or nearly no protein



expression (0-5%). 16 of 32 ESCC patients (50%) have been identified to express score 1 0-5% detectable protein. Comparison of podoplanin expression between ESCC and EAC,  $P < 0.001$  is depicted in [Table 2](#).

Different expression levels of podoplanin have been stained in EAC and ESCC patients in both, resected tissues of patients with primary surgery and endoscopic biopsies. One hundred and four endoscopic biopsies of 46 EAC and 58 ESCC patients confirmed podoplanin expression in ESCC, and its absence in EAC. Forty-four/fourty-six EAC patients (96%) were scored for expression of 0-5% protein compared to 36 of 58 ESCC patients (63%),  $P = 0.002$ , [Table 2](#).

### **Podoplanin, a marker for tumor progression?**

Podoplanin expression in resected tissues of 32 ESCC patients without chemoradiation did not show any significant relation to pT-category ( $P = 0.085$ ,  $P = 0.051$  for pT2 to pT4) or lymph node metastases ( $P = 0.457$ ), however, results are limited by the small number of patients in the subgroups ([Table 3](#)).

### **Podoplanin expression and prognosis**

We analyzed a potential association of podoplanin expression and survival of ESCC-patients without preoperative chemotherapy. Patients with a stronger podoplanin protein expression  $> 5\%$  [high podoplanin expression (HPE)] had a worse prognosis compared to the patient group with low expression ( $P = 0.013$ ), [Figure 1](#).

Sixteen patients showing a lower podoplanin expression of 0-5%, had a better survival rate of 34% than the patient group with HPE, resulting in a five-year survival of 12%.

### **Chemoradiation changes podoplanin protein expression**

Fifty-eight ESCC and 48 EAC patients received preoperative chemoradiation therapy due to an advanced tumor stage (cT3NxM0).

Only one of these 48 EAC patients expressed HPE in resection specimen, 47 patients showed none or low expression. Staining of 57 primary surgery EAC patients provided the same result of absence of podoplanin, [Table 2](#).

Seven of 58 ESCC patients expressed HPE in resected tissue after chemoradiation, 51 patients had a lower expression  $< 5\%$ . We compared the protein expression of this group of 58 ESCC patients who received chemoradiation to the non-pretreated primary surgery group of 32 ESCC patients. Podoplanin expression has been identified to be significantly lower in resected specimen of neoadjuvantly pre-treated patients compared to patients receiving only surgery,  $P < 0.001$  ([Table 4](#)).

To confirm the different podoplanin expression levels between neoadjuvantly treated and non-pretreated primary surgery patient groups, we compared the protein expression in endoscopic biopsies with the expression after CTx/RTx of the individual matching resected tissue specimen of 56 ESCC patients.

Thirty-five pretreatment biopsies did not express podoplanin 0-5%, score 1. Thirty-four of 35 neoadjuvantly treated patients (97%) did not express podoplanin in resected tissues. Twenty-one patients showed a higher podoplanin expression of  $> 5\%$  (Score 2-4) in their biopsies before chemoradiation. In resection specimen of 16 of these 21 patients (76%) podoplanin was not detectable after neoadjuvant treatment. The matching resected specimen of these patients showed a decreased podoplanin expression after CTx/RTx,  $P < 0.001$ , examples in [Figure 2](#), survey in [Table 5](#).

### **Impact of podoplanin expression for prediction of response to neoadjuvant chemoradiation**

There was no significant difference detectable in podoplanin expression between 35 minor and 23 majors responders among 58 ESCC patients ( $P = 0.879$ ). Thirty-one of 35 minors responders showed a score 1, 4 of 35 Score 2 and 3 ( $> 5\%$  podoplanin expression). Twenty-one of 23 majors responders showed Score 1, 2 of 23 Score 2.

### **Expression of miR-363 and podoplanin**

To examine a potential role of miR-363 for post-transcriptional control of podoplanin up-regulation in ESCC, miR-363 expression has been quantified and compared to the expression level of podoplanin protein in resected tissues of 29 ESCC and 19 EAC patients – all patients without neoadjuvant therapy. There was no significant difference in miR-363 expression between EAC  $n = 19$  and ESCC  $n = 29$  patient groups. miR-363 expression was not associated to histological tumor types. Median miRNA-363 expression was 8.4 (min-max: 1.05-303) in ESCC and 7.07 (min-max: 1.7-42.5) in EAC patients.

The association between miR-363 and podoplanin expression in the study group of ESCC patients without neoadjuvant treatment is shown as boxplots, [Figure 3](#). An up-regulated podoplanin expression has been detected to be associated with a lower miR-

**Table 2 Podoplanin expression in esophageal cancer squamous cell carcinoma of the esophagus vs adenocarcinoma of the esophagus**

	Total		ESCC		EAC	
	<i>n</i>	Podoplanin > 5% (HPE, %)	<i>n</i>	Podoplanin > 5% (HPE, %)	<i>n</i>	Podoplanin > 5% (HPE, %)
Total study cohort	195	13	90	26	105	2
Gender						
Male	155	10	61	23	94	1
Female	40	25	29	32	11	9
Therapy						
Surgery only	89	19	32	50	57	2
RTx/CTx + surgery	106	7	58	11	48	2
T-category						
pT2	30	3	6	17	24	0
cT/pT3	165	14	84	27	81	3
Endoscopic biopsy	104	7	58	38	46	2

Biopsies and resected specimen of patients with adeno- and squamous cell carcinoma, scoring by immunohistochemically stained D2-40. HPE: High podoplanin expression; EAC: Adenocarcinoma of the esophagus; ESCC: Squamous cell carcinoma of the esophagus; pT: Pathologic tumor; cT: Clinical tumor category; RTx/CTx: Neoadjuvant radio-/chemotherapy.

363 expression. Subgrouping of ESCC patients by podoplanin expression of 0-5% and HPE resulted in a trend of a correlation between expression of miR-363 and podoplanin protein: 0-5% *n* = 14: median miR-363 12.7 (min-max: 3.0-303), > 5%: *n* = 15: median miR-363 6.1 (min-max: 1.05-131).

Patients with lower miR-363 expression had a worse prognosis compared to those with higher miR-363 expression. We identified a prognostic relevant cut-off value for miR-363. Patients without distant metastases with miR-363 expression < 7 (*n* = 10) had a significantly worse prognosis than patients with miR expression ≥ 7 (*n* = 16), *P* = 0.049. (Figure 4). Based on this cut-off value for miR-363 expression of 7, the lower miR-363 expression (miR-363 < 7: *n* = 9) was associated with HPE (*n* = 15). Six of these 15 non-pretreated ESCC patients showed miR-363 expression ≥ 7 in resected tissue specimen. miR-363 expression ≥ 7 (*n* = 12) was associated with a low podoplanin expression of 0-5% *n* = 14, (*P* = 0.011). Only two of these 12 patients with low podoplanin expression expressed miR-363 < 7.

## DISCUSSION

The histologically different tumor types EAC and ESCC depend on different risk factors, show biologically different characteristics, and respond with different rates to chemoradiotherapy<sup>[3,4]</sup>. Podoplanin expression is one example for the biological diversity between these most frequent histological subtypes of esophageal cancer. Our study confirms data of none to nearly no expression of the transmembrane protein podoplanin in EAC patients, and its expression in ESCC patients<sup>[22]</sup>. The oncofetal protein podoplanin has been described to be re-expressed in squamous cell carcinoma of other tumor entities, as well<sup>[23-25]</sup>.

The most important result of our study is the change of podoplanin expression during neoadjuvant chemoradiation. This is a novel finding.

Our study has demonstrated a change of podoplanin protein expression after neoadjuvant treatment in resected tissue compared to pretreatment biopsies of the same individual patients. The comparison of resection specimen of a patient cohort neoadjuvantly pretreated with an only surgery study cohort provided the same result of lower podoplanin expression associated with chemoradiation.

The present study also revealed that podoplanin expression in pretreatment biopsies is not predictive for therapy response to chemoradiation. A low expression level did not seem to have the consequence of a major response, neither did a high podoplanin level with therapy resistance or minor response. Therefore, the thesis that podoplanin is expressed specifically by a differentiated tumor cell population with a stem cell like phenotype conferring therapy resistance as described by Lynam-Lennon *et al*<sup>[26]</sup> does not seem to be the fact for ESCC. There was no significant difference in podoplanin expression between 35 minor and 23 majors responding ESCC patients. Due to the changed podoplanin expression after neoadjuvant treatment this protein

**Table 3 Podoplanin expression and tumor progression**

Resected tissue	Score	Podoplanin, %	Patients, n	Patients, %
pT2, n = 6	1	0-5	5	83
	2	6-35	1	17
	3	36-65	0	0
pT3/4, n = 26	1	0-5	11	43
	2	6-35	10	38
	3	36-65	5	19
pN0, n = 11	1	0-5	7	64
	2	6-35	2	18
	3	36-65	2	18
pN+, n = 21	1	0-5	9	43
	2	6-35	9	43
	3	36-65	3	14

Resected tumor specimen of non-pretreated primary surgery squamous cell carcinoma of the esophagus patients, n = 32; pT: Pathologic tumor category; pN0: No lymph node metastases; pN+: Lymph nodes involved, scoring by immunohistochemical staining of D2-40.

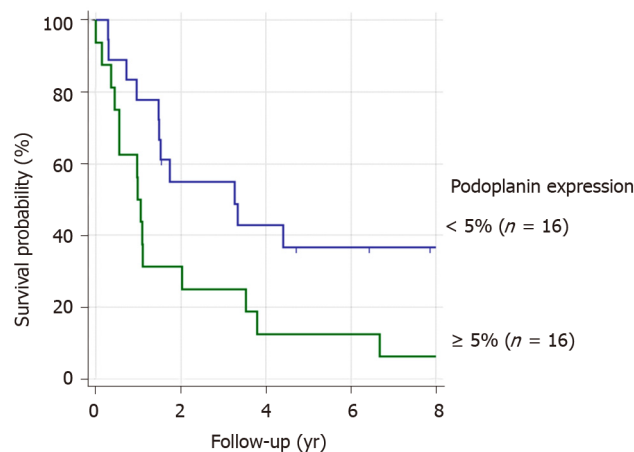
might rather be a target for therapy than a response predictive marker.

Upregulation of podoplanin expression was associated with ESCC. A reason for high podoplanin expression in squamous cell carcinoma in contrast to adenocarcinoma might be that podoplanin is expressed in some adult normal cells like lung alveolar cells, glomerular podocytes, as well as in basal epithelium of cervix and esophagus. ESCC develops from squamous epithelial cells, whereas in EAC these cells are replaced by columnar intestinal-type mucosa. EAC develops from Barrett esophagus<sup>[27]</sup>.

Additionally, we were able to demonstrate high expression of podoplanin to be a marker for worse prognosis in accordance with data reviewed by Wang *et al*<sup>[22]</sup>. Therefore, there may be a therapeutic effect by inhibiting this target. Monoclonal antibodies against podoplanin have already been produced for a potential target-based therapy<sup>[28-30]</sup>.

The biological function of podoplanin does support this therapeutic option. Podoplanin is a mucin-like transmembrane glycoprotein associated with cancer cell invasion and migration<sup>[31]</sup> and has been identified as a marker for early infiltrative carcinoma<sup>[27]</sup>. Podoplanin has been suggested to be involved in lymphangiogenesis, since podoplanin deficient mice had dilated malfunctioning lymphatic vessels and lymphedema<sup>[32]</sup>. The most studied physiological role of podoplanin is its ability to bind and activate the C-type lectin receptor (CLEC) that is highly expressed by platelets and immunocompetent cells<sup>[33,34]</sup>. Podoplanin has been identified as a key factor in tumor-induced platelet aggregation enhancing metastasis by secreting growth factors and forming tumor emboli in the microvasculature, reviewed by Hisada *et al*<sup>[35]</sup>. Therefore, the podoplanin-mediated platelet aggregation might be an effective target for anti-tumor therapies. Platelet aggregation-inducing domains have been detected<sup>[15]</sup>. Aggregated platelets are coating tumor cells during their transit through the bloodstream, are mediating adherence to vascular endothelium, evasion from immune molecules and facilitate growth at metastatic sites. Podoplanin elicits platelet aggregation as the ligand of CLEC-2<sup>[36,37]</sup>. The strong upregulation of podoplanin expression supports its potential role as a therapeutic target reviewed by Takemoto *et al*<sup>[38]</sup>. An anti-human podoplanin antibody (NZ-1) inhibiting podoplanin-induced platelet aggregation, abrogated experimental metastasis has already been formed, however with strong toxic side effects. A further novel chimeric humanized anti-human podoplanin antibody inhibiting podoplanin-induced platelet aggregation has been developed as a potential novel anticancer agent<sup>[39]</sup>. Since there is toxicity due to interferences with endogenous podoplanin in other cell types like type I lung alveolar cells, kidney podocytes, choroid plexus epithelium, a less interfering antigen has been developed<sup>[40]</sup>. However, the knowledge about the function of podoplanin in these organs is scarce.

Podoplanin has been reported to be involved in tumor progression<sup>[41]</sup> correlating with lymph node metastasis<sup>[42-46]</sup>. We were unable to demonstrate a significant association of podoplanin expression and T-category by staining of resection tissue of primary surgery patients, although a trend of a non-significant increase of podoplanin



**Figure 1** Podoplanin expression and prognosis of squamous cell carcinoma of the esophagus patients.

Podoplanin expression in resected specimen of non-pretreated squamous cell carcinoma of the esophagus patients.

expression in T3 category compared to T2 has been observed. The lack of association between podoplanin expression and lymph node metastases might be due to the small number of patients in this subgroup, a weakness of our study.

Despite this limitation we were able to detect an association of podoplanin expression with prognosis. Our data complements that of Tanaka *et al*<sup>[17]</sup> reporting on increased podoplanin expression as a predictor of mortality. Therefore, podoplanin could be applied as a prognostic marker for identification of patients with high risk for tumor progression.

Podoplanin represents an oncofetal antigen not expressed in most adult cells and re-expressed in squamous cell carcinoma. The transcriptional regulation of podoplanin expression has been reviewed by Astarita *et al*<sup>[47]</sup>. Podoplanin transcription is regulated by AP-1 transcription factor comprised of Fos and Jun proteins. PTEN expression, a negative regulator of PI3K-AKT-AP-1 pathway, has inversely been correlated with podoplanin expression. The podoplanin promoter is heavily methylated keeping it repressed. Upregulation during malignant conditions seems to depend on the activity of Fos and Jun (AP-1) transcription factors. miRNAs are a major tool of posttranscriptional regulation. As a kind of master regulator these small molecules inhibit protein expression binding or degrading mRNAs<sup>[25]</sup>. Circulating microRNAs have been associated with unfavorable response to neoadjuvant chemoradiotherapy<sup>[48]</sup>. A potential impact of post-transcriptional regulation of podoplanin protein expression by miR-363 has been described for head and neck squamous cell carcinoma<sup>[20]</sup>. Anti-proliferative properties have also been reported for miR-363<sup>[44]</sup>, in gastric cancer<sup>[49]</sup>. We correlated miR-363 quantification with podoplanin protein expression and identified a cut-off value associated with a significant correlation. Patients with high miR-363 expression and down-regulated podoplanin expression had a better prognosis. This association and the potential role of miR-363 for up-regulation of podoplanin expression in ESCC also is a novel finding.

This is the first study showing a significant down-regulation of podoplanin protein expression during neoadjuvant chemoradiation in patients with ESCC. Podoplanin as well as its post-transcriptional regulator miR-363 might be important targets for a tailored therapy of locally advanced ESCC, as well as markers for prognosis.



**Table 4 Expression of podoplanin protein differs between tissues resected from neoadjuvantly treated and non-pretreated direct surgery squamous cell carcinoma of the esophagus patients**

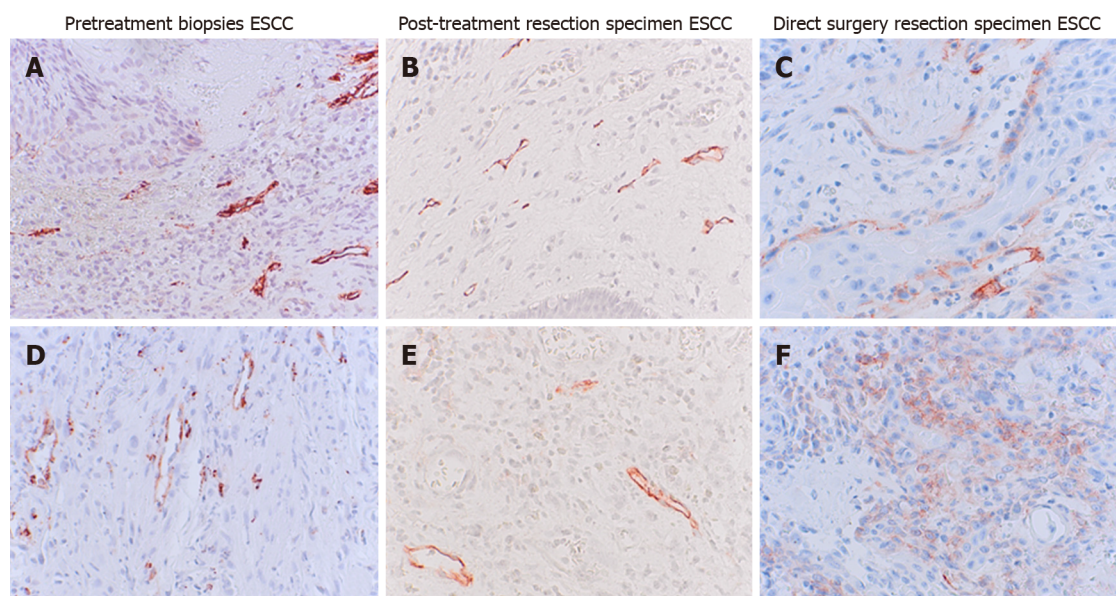
Resected tissue	Podoplanin		Patients	
	Score	%	n	%
RTx/CTx + surgery	1	0-5	51	89
	2	6-35	5	9
	3	36-65	2	2
Primary surgery non-pretreated	1	0-5	16	50
	2	6-35	11	34
	3	36-65	5	16

Resected tissue specimen: neoadjuvant chemoradiation squamous cell carcinoma of the esophagus (ESCC) patients,  $n = 58$  and non-pretreated direct surgery ESCC patients,  $n = 32$ , scoring by immunohistochemically stained D2-40,  $P < 0.001$ . RTx/CTx: Neoadjuvant radio-/chemotherapy.

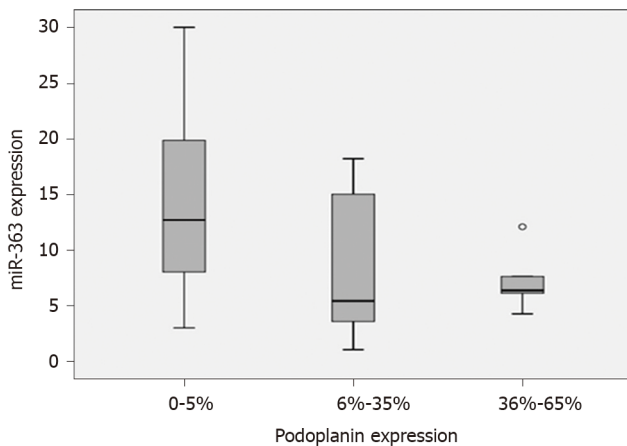
**Table 5 Podoplanin expression pre- and post-neoadjuvant chemoradiation**

Endoscopic biopsies pre RTx/CTx		Post RTx/CTx resected tissue			
Podoplanin expression	Patients, n	0-5%	6%-35%	36%-65%	> 65%
0-5%	35	34	1	0	0
6%-35%	14	10	3	1	0
36%-65%	3	3	0	0	0
> 65%	4	3	1	0	0

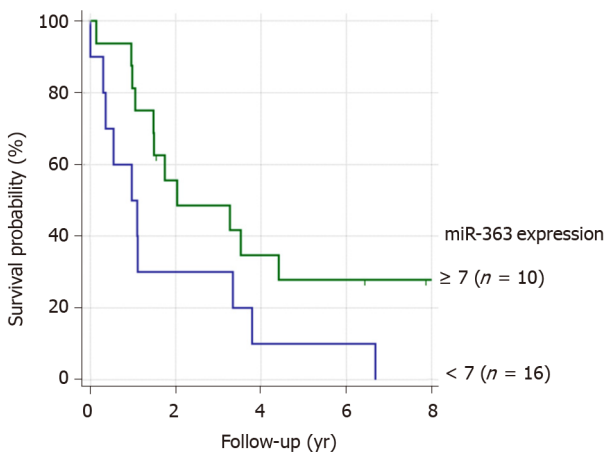
Comparison of matched biopsies and resected specimen of 56 patients, scoring by immunohistochemically stained D2-40,  $P < 0.001$ . RTx/CTx: Neoadjuvant radio-chemotherapy.



**Figure 2 Podoplanin expression pre- and post-neoadjuvant treatment.** A and D: Pre-treatment biopsies of two patients with podoplanin expression of scores: 3 (A) and 2 (D); B and E: Matching resection specimen of the same squamous cell carcinoma of the esophagus (ESCC) patients after chemoradiation, Scores: 1 (B), 2 (E); C and F: Resection specimen of two ESCC patients without neoadjuvant treatment, scores: 2 (C), 3 (F), at T-category 3; 40 ×. Score 1: 0-5% tumor cells stained by D2-40 mab, score 2: 6%-35%, score 3: 36%-65%. ESCC: Squamous cell carcinoma of the esophagus.



**Figure 3** miR-363 and podoplanin expression for 29 non-pretreated squamous cell carcinoma of the esophagus patients. Relative miR-363 expression compared to immunohistochemically stained podoplanin protein expression in resected tissue specimen.



**Figure 4** miR-363 expression and prognosis of 26 squamous cell carcinoma of the esophagus patients. Subgrouping by relative miR-363 expression < 7 and ≥ 7.

## ARTICLE HIGHLIGHTS

### Research background

Patients with locally advanced esophageal carcinoma have a poor prognosis. Additionally, only 40%-50% of the patients profit by improved survival from neoadjuvant therapies after the burden of chemoradiation.

### Research motivation

We urgently need markers for diagnosis of earlier tumor stages, for prediction of therapy response and prognosis, as well as targets for novel therapies.

### Research objectives

Our aim was to evaluate the predictive impact of podoplanin expression for therapy response and prognosis and a potential association with post-transcriptional regulation by miR-363 as one mechanism of deregulation in cancer. Podoplanin protein expression has been related to clinical parameters (histological tumor type, histopathologic response classification, survival rate, clinical tumor category), with regard to a potential benefit for personalization of neoadjuvant treatment.

### Research methods

Podoplanin has been visualized by immunohistochemistry in resection-specimen of 195 patients: 90 squamous cell carcinomas of the esophagus (ESCC), 105 adenocarcinomas of the esophagus (EAC) with clinical T2-3, Nx, M0. RNA was extracted from paraffin-embedded tissue, miRNA-363 quantified by real-time TaqMan-real-time-PCR.

### Research results



We confirmed high podoplanin expression (HPE) in ESCC patients and its absence in EAC. We detected lower podoplanin expression in resection-specimen of 58 ESCC patients after neoadjuvant (RTx/CTx) treatment, only 11% with HPE of > 5%, compared to 32 non-pretreated primary surgery patients with 50% HPE,  $P = 0.0001$ . This novel finding of a lower podoplanin expression in the pretreated patient cohort was confirmed by the comparison of corresponding surgical specimens after neoadjuvant treatment with the individual matching pretherapeutic biopsies of 56 patients,  $P < 0.001$ . Podoplanin, however, is no predictive marker for response to neoadjuvant chemoradiation. Due to the small number of cT1-T2 patients we were only able to show a trend of association with podoplanin protein expression. We were able to demonstrate a prognostic impact of podoplanin, as well as for miR-336, a posttranscriptional regulator of this protein.

### Research conclusions

Direct surgery ESCC patients with a low podoplanin expression have a better prognosis. Chemoradiation results in reduction of expression of podoplanin protein in patients with ESCC. Podoplanin expression seems to be, among others, controlled by miR-363.

### Research perspectives

The decrease of podoplanin expression might become a therapeutic option.

## ACKNOWLEDGEMENTS

We thank Michaela Heitmann, Susanne Neiss and Anke Wienand-Dorweiler for their excellent technical assistance.

## REFERENCES

- 1 **Torre LA**, Siegel RL, Ward EM, Jemal A. Global Cancer Incidence and Mortality Rates and Trends--An Update. *Cancer Epidemiol Biomarkers Prev* 2016; **25**: 16-27 [PMID: [26667886](#) DOI: [10.1158/1055-9965.EPI-15-0578](#)]
- 2 **Simard EP**, Ward EM, Siegel R, Jemal A. Cancers with increasing incidence trends in the United States: 1999 through 2008. *CA Cancer J Clin* 2012; **62**: 118-128 [PMID: [22281605](#) DOI: [10.3322/caac.20141](#)]
- 3 **Napier KJ**, Scheerer M, Misra S. Esophageal cancer: A Review of epidemiology, pathogenesis, staging workup and treatment modalities. *World J Gastrointest Oncol* 2014; **6**: 112-120 [PMID: [24834141](#) DOI: [10.4251/wjgo.v6.i5.112](#)]
- 4 **Taylor PR**, Abnet CC, Dawsey SM. Squamous dysplasia--the precursor lesion for esophageal squamous cell carcinoma. *Cancer Epidemiol Biomarkers Prev* 2013; **22**: 540-552 [PMID: [23549398](#) DOI: [10.1158/1055-9965.EPI-12-1347](#)]
- 5 **Hölscher AH**, Bollschweiler E, Bogoevski D, Schmidt H, Semrau R, Izbicki JR. Prognostic impact of neoadjuvant chemoradiation in cT3 oesophageal cancer - A propensity score matched analysis. *Eur J Cancer* 2014; **50**: 2950-2957 [PMID: [25307749](#) DOI: [10.1016/j.ejca.2014.08.020](#)]
- 6 **Bollschweiler E**, Metzger R, Drebbler U, Baldus S, Vallböhmer D, Kocher M, Hölscher AH. Histological type of esophageal cancer might affect response to neo-adjuvant radiochemotherapy and subsequent prognosis. *Ann Oncol* 2009; **20**: 231-238 [PMID: [18836090](#) DOI: [10.1093/annonc/mdn622](#)]
- 7 **Hölscher AH**, Drebbler U, Schmidt H, Bollschweiler E. Prognostic classification of histopathologic response to neoadjuvant therapy in esophageal adenocarcinoma. *Ann Surg* 2014; **260**: 779-84; discussion 784-785 [PMID: [25379849](#) DOI: [10.1097/SLA.0000000000000964](#)]
- 8 **Metzger R**, Schneider PM, Warnecke-Eberz U, Brabender J, Hölscher AH. Molecular biology of esophageal cancer. *Onkologie* 2004; **27**: 200-206 [PMID: [15138356](#) DOI: [10.1159/000076913](#)]
- 9 **Miyazono F**, Metzger R, Warnecke-Eberz U, Baldus SE, Brabender J, Bollschweiler E, Doerfler W, Mueller RP, Dienes HP, Aikou T, Hoelscher AH, Schneider PM. Quantitative c-erbB-2 but not c-erbB-1 mRNA expression is a promising marker to predict minor histopathologic response to neoadjuvant radiochemotherapy in esophageal cancer. *Br J Cancer* 2004; **91**: 666-672 [PMID: [15213712](#) DOI: [10.1038/sj.bjc.6601976](#)]
- 10 **Warnecke-Eberz U**, Metzger R, Miyazono F, Baldus SE, Neiss S, Brabender J, Schaefer H, Doerfler W, Bollschweiler E, Dienes HP, Mueller RP, Danenberg PV, Hoelscher AH, Schneider PM. High specificity of quantitative excision repair cross-complementing 1 messenger RNA expression for prediction of minor histopathological response to neoadjuvant radiochemotherapy in esophageal cancer. *Clin Cancer Res* 2004; **10**: 3794-3799 [PMID: [15173087](#) DOI: [10.1158/1078-0432.CCR-03-0079](#)]
- 11 **Plum PS**, Bollschweiler E, Hölscher AH, Warnecke-Eberz U. Novel diagnostic and prognostic biomarkers in esophageal cancer. *Expert Opin Med Diagn* 2013; **7**: 557-571 [PMID: [24093836](#) DOI: [10.1517/17530059.2013.843526](#)]
- 12 **Warnecke-Eberz U**, Metzger R, Bollschweiler E, Baldus SE, Mueller RP, Dienes HP, Hoelscher AH, Schneider PM. TaqMan low-density arrays and analysis by artificial neuronal networks predict response to neoadjuvant chemoradiation in esophageal cancer. *Pharmacogenomics* 2010; **11**: 55-64 [PMID: [20017672](#) DOI: [10.2217/pgs.09.137](#)]
- 13 **Metzger R**, Heukamp L, Drebbler U, Bollschweiler E, Zander T, Hoelscher AH, Warnecke-Eberz U. CUL2 and STK11 as novel response-predictive genes for neoadjuvant radiochemotherapy in esophageal cancer. *Pharmacogenomics* 2010; **11**: 1105-1113 [PMID: [20712528](#) DOI: [10.2217/pgs.10.76](#)]
- 14 **Rahadiani N**, Ikeda J, Makino T, Tian T, Qiu Y, Mamat S, Wang Y, Doki Y, Aozasa K, Morii E. Tumorigenic role of podoplanin in esophageal squamous-cell carcinoma. *Ann Surg Oncol* 2010; **17**: 1311-1323 [PMID: [20066519](#) DOI: [10.1245/s10434-009-0895-5](#)]
- 15 **Sekiguchi T**, Takemoto A, Takagi S, Takatori K, Sato S, Takami M, Fujita N. Targeting a novel domain in podoplanin for inhibiting platelet-mediated tumor metastasis. *Oncotarget* 2016; **7**: 3934-3946 [PMID: [26684030](#) DOI: [10.18632/oncotarget.6598](#)]

- 16 **Nakashima Y**, Yoshinaga K, Kitao H, Ando K, Kimura Y, Saeki H, Oki E, Morita M, Kakeji Y, Hirahashi M, Oda Y, Machara Y. Podoplanin is expressed at the invasive front of esophageal squamous cell carcinomas and is involved in collective cell invasion. *Cancer Sci* 2013; **104**: 1718-1725 [PMID: 24103048 DOI: 10.1111/cas.12286]
- 17 **Tanaka M**, Kijima H, Shimada H, Makuuchi H, Ozawa S, Inokuchi S. Expression of podoplanin and vimentin is correlated with prognosis in esophageal squamous cell carcinoma. *Mol Med Rep* 2015; **12**: 4029-4036 [PMID: 26095281 DOI: 10.3892/mmr.2015.3966]
- 18 **Ng SB**, Yan J, Huang G, Selvarajan V, Tay JL, Lin B, Bi C, Tan J, Kwong YL, Shimizu N, Aozasa K, Chng WJ. Dysregulated microRNAs affect pathways and targets of biologic relevance in nasal-type natural killer/T-cell lymphoma. *Blood* 2011; **118**: 4919-4929 [PMID: 21921041 DOI: 10.1182/blood-2011-07-364224]
- 19 **Qiao J**, Lee S, Paul P, Theiss L, Tiao J, Qiao L, Kong A, Chung DH. miR-335 and miR-363 regulation of neuroblastoma tumorigenesis and metastasis. *Surgery* 2013; **154**: 226-233 [PMID: 23806264 DOI: 10.1016/j.surg.2013.04.005]
- 20 **Sun Q**, Zhang J, Cao W, Wang X, Xu Q, Yan M, Wu X, Chen W. Dysregulated miR-363 affects head and neck cancer invasion and metastasis by targeting podoplanin. *Int J Biochem Cell Biol* 2013; **45**: 513-520 [PMID: 23246488 DOI: 10.1016/j.biocel.2012.12.004]
- 21 **Puetz K**, Bollschweiler E, Semrau R, Mönig SP, Hölscher AH, Drebber U. Neoadjuvant chemoradiation for patients with advanced oesophageal cancer - which response grading system best impacts prognostic discrimination? *Histopathology* 2019; **74**: 731-743 [PMID: 30636069 DOI: 10.1111/his.13811]
- 22 **Wang C**, Wang J, Chen Z, Gao Y, He J. Immunohistochemical prognostic markers of esophageal squamous cell carcinoma: a systematic review. *Chin J Cancer* 2017; **36**: 65 [PMID: 28818096 DOI: 10.1186/s40880-017-0232-5]
- 23 **Pula B**, Jethon A, Piotrowska A, Gomulkiewicz A, Owczarek T, Calik J, Wojnar A, Witkiewicz W, Rys J, Ugorski M, Dziegiel P, Podhorska-Okolow M. Podoplanin expression by cancer-associated fibroblasts predicts poor outcome in invasive ductal breast carcinoma. *Histopathology* 2011; **59**: 1249-1260 [PMID: 22175904 DOI: 10.1111/j.1365-2559.2011.04060.x]
- 24 **Toll A**, Gimeno-Beltrán J, Ferrandiz-Pulido C, Masferrer E, Yébenes M, Jugclà A, Abal L, Martí RM, Sanmartín O, Baró T, Casado B, Gandarillas A, Barranco C, Costa I, Mojal S, García-Patos V, Pujol RM. D2-40 immunohistochemical overexpression in cutaneous squamous cell carcinomas: a marker of metastatic risk. *J Am Acad Dermatol* 2012; **67**: 1310-1318 [PMID: 22521203 DOI: 10.1016/j.jaad.2012.03.007]
- 25 **Funayama A**, Cheng J, Maruyama S, Yamazaki M, Kobayashi T, Syafriadi M, Kundu S, Shingaki S, Saito C, Saku T. Enhanced expression of podoplanin in oral carcinomas in situ and squamous cell carcinomas. *Pathobiology* 2011; **78**: 171-180 [PMID: 21613804 DOI: 10.1159/000324926]
- 26 **Lynam-Lennon N**, Maher SG, Reynolds JV. The roles of microRNA in cancer and apoptosis. *Biol Rev Camb Philos Soc* 2009; **84**: 55-71 [PMID: 19046400 DOI: 10.1111/j.1469-185X.2008.00061.x]
- 27 **Chen G**, Xu R, Yue B, Mei X, Li P, Zhou X, Huang S, Gong L, Zhang S. The expression of podoplanin protein is a diagnostic marker to distinguish the early infiltration of esophageal squamous cell carcinoma. *Oncotarget* 2017; **8**: 19013-19020 [PMID: 28086225 DOI: 10.18632/oncotarget.14596]
- 28 **Kato Y**, Kaneko MK. A cancer-specific monoclonal antibody recognizes the aberrantly glycosylated podoplanin. *Sci Rep* 2014; **4**: 5924 [PMID: 25080943 DOI: 10.1038/srep05924]
- 29 **Kato Y**, Kaneko MK, Kuno A, Uchiyama N, Amano K, Chiba Y, Hasegawa Y, Hirabayashi J, Narimatsu H, Mishima K, Osawa M. Inhibition of tumor cell-induced platelet aggregation using a novel anti-podoplanin antibody reacting with its platelet-aggregation-stimulating domain. *Biochem Biophys Res Commun* 2006; **349**: 1301-1307 [PMID: 16979138 DOI: 10.1016/j.bbrc.2006.08.171]
- 30 **Nakazawa Y**, Takagi S, Sato S, Oh-hara T, Koike S, Takami M, Arai H, Fujita N. Prevention of hematogenous metastasis by neutralizing mice and its chimeric anti-Aggrus/podoplanin antibodies. *Cancer Sci* 2011; **102**: 2051-2057 [PMID: 21824222 DOI: 10.1111/j.1349-7006.2011.02058.x]
- 31 **Li JC**, Li Y, Ai JY, Chen K, Zhu YH, Fu L, Qin YR, Wang LJ, Guan XY. Podoplanin-positive cancer cells at the edge of esophageal squamous cell carcinomas are involved in invasion. *Mol Med Rep* 2014; **10**: 1513-1518 [PMID: 24938315 DOI: 10.3892/mmr.2014.2338]
- 32 **Schacht V**, Ramirez MI, Hong YK, Hirakawa S, Feng D, Harvey N, Williams M, Dvorak AM, Dvorak HF, Oliver G, Detmar M. T1alpha/podoplanin deficiency disrupts normal lymphatic vasculature formation and causes lymphedema. *EMBO J* 2003; **22**: 3546-3556 [PMID: 12853470 DOI: 10.1093/emboj/cdg342]
- 33 **Bertozzi CC**, Schmaier AA, Mericko P, Hess PR, Zou Z, Chen M, Chen CY, Xu B, Lu MM, Zhou D, Sebzda E, Santore MT, Merianos DJ, Stadtfeld M, Flake AW, Graf T, Skoda R, Maltzman JS, Koretzky GA, Kahn ML. Platelets regulate lymphatic vascular development through CLEC-2-SLP-76 signaling. *Blood* 2010; **116**: 661-670 [PMID: 20363774 DOI: 10.1182/blood-2010-02-270876]
- 34 **Rayes J**, Watson SP, Nieswandt B. Functional significance of the platelet immune receptors GPVI and CLEC-2. *J Clin Invest* 2019; **129**: 12-23 [PMID: 30601137 DOI: 10.1172/JCI122955]
- 35 **Hisada Y**, Mackman N. Cancer-associated pathways and biomarkers of venous thrombosis. *Blood* 2017; **130**: 1499-1506 [PMID: 28807983 DOI: 10.1182/blood-2017-03-743211]
- 36 **Lowe KL**, Navarro-Nunez L, Watson SP. Platelet CLEC-2 and podoplanin in cancer metastasis. *Thromb Res* 2012; **129** Suppl 1: S30-S37 [PMID: 22682130 DOI: 10.1016/S0049-3848(12)70013-0]
- 37 **Suzuki-Inoue K**. CLEC-2/podoplanin and thromboinflammation. *Blood* 2017; **129**: 1896-1898 [PMID: 28385772 DOI: 10.1182/blood-2017-02-764670]
- 38 **Takemoto A**, Miyata K, Fujita N. Platelet-activating factor podoplanin: from discovery to drug development. *Cancer Metastasis Rev* 2017; **36**: 225-234 [PMID: 28674748 DOI: 10.1007/s10555-017-9672-2]
- 39 **Ogasawara S**, Kaneko MK, Honma R, Oki H, Fujii Y, Takagi M, Suzuki H, Kato Y. Establishment of Mouse Monoclonal Antibody LpMab-13 Against Human Podoplanin. *Monoclon Antib Immunodiagn Immunother* 2016; **35**: 155-162 [PMID: 27328060 DOI: 10.1089/mab.2016.0006]
- 40 **Yamada S**, Ogasawara S, Kaneko MK, Kato Y. LpMab-23: A Cancer-Specific Monoclonal Antibody Against Human Podoplanin. *Monoclon Antib Immunodiagn Immunother* 2017; **36**: 72-76 [PMID: 28387591 DOI: 10.1089/mab.2017.0001]
- 41 **Suchanski J**, Tejchman A, Zacharski M, Piotrowska A, Grzegorzolka J, Chodaczek G, Nowinska K, Rys J, Dziegiel P, Kieda C, Ugorski M. Podoplanin increases the migration of human fibroblasts and affects the endothelial cell network formation: A possible role for cancer-associated fibroblasts in breast cancer progression. *PLoS One* 2017; **12**: e0184970 [PMID: 28938000 DOI: 10.1371/journal.pone.0184970]
- 42 **Cueni LN**, Hegyi I, Shin JW, Albinger-Hegy A, Gruber S, Kunstfeld R, Moch H, Detmar M. Tumor

- lymphangiogenesis and metastasis to lymph nodes induced by cancer cell expression of podoplanin. *Am J Pathol* 2010; **177**: 1004-1016 [PMID: [20616339](#) DOI: [10.2353/ajpath.2010.090703](#)]
- 43 **Huber GF**, Fritzsche FR, Züllig L, Storz M, Graf N, Haerle SK, Jochum W, Stoeckli SJ, Moch H. Podoplanin expression correlates with sentinel lymph node metastasis in early squamous cell carcinomas of the oral cavity and oropharynx. *Int J Cancer* 2011; **129**: 1404-1409 [PMID: [21105028](#) DOI: [10.1002/ijc.25795](#)]
- 44 **Tong L**, Yuan S, Feng F, Zhang H. Role of podoplanin expression in esophageal squamous cell carcinoma: a retrospective study. *Dis Esophagus* 2012; **25**: 72-80 [PMID: [21895849](#) DOI: [10.1111/j.1442-2050.2011.01211.x](#)]
- 45 **Khuu C**, Sehic A, Eide L, Osmundsen H. Anti-proliferative Properties of miR-20b and miR-363 from the miR-106a-363 Cluster on Human Carcinoma Cells. *Microrna* 2016; **5**: 19-35 [PMID: [27001184](#) DOI: [10.2174/2211536605666160322151813](#)]
- 46 **Chuang WY**, Yeh CJ, Chao YK, Liu YH, Chang YS, Tseng CK, Chang HK, Wan YL, Hsueh C. Concordant podoplanin expression in cancer-associated fibroblasts and tumor cells is an adverse prognostic factor in esophageal squamous cell carcinoma. *Int J Clin Exp Pathol* 2014; **7**: 4847-4856 [PMID: [25197355](#)]
- 47 **Astarita JL**, Acton SE, Turley SJ. Podoplanin: emerging functions in development, the immune system, and cancer. *Front Immunol* 2012; **3**: 283 [PMID: [22988448](#) DOI: [10.3389/fimmu.2012.00283](#)]
- 48 **Yu J**, Li N, Wang X, Ren H, Wang W, Wang S, Song Y, Liu Y, Li Y, Zhou X, Luo A, Liu Z, Jin J. Circulating serum microRNA-345 correlates with unfavorable pathological response to preoperative chemoradiotherapy in locally advanced rectal cancer. *Oncotarget* 2016; **7**: 64233-64243 [PMID: [27572313](#) DOI: [10.18632/oncotarget.11649](#)]
- 49 **Song B**, Yan J, Liu C, Zhou H, Zheng Y. Tumor Suppressor Role of miR-363-3p in Gastric Cancer. *Med Sci Monit* 2015; **21**: 4074-4080 [PMID: [26709677](#) DOI: [10.12659/MSM.896556](#)]



Published by Baishideng Publishing Group Inc  
7041 Koll Center Parkway, Suite 160, Pleasanton, CA 94566, USA  
Telephone: +1-925-3991568  
E-mail: [bpgoffice@wjgnet.com](mailto:bpgoffice@wjgnet.com)  
Help Desk: <http://www.f6publishing.com/helpdesk>  
<http://www.wjgnet.com>

