

Answering Reviews

Dear Editors and Reviewers,

Thank you very much for taking time out of your busy schedule to review our article, which benefits us a lot. We greatly appreciate the editor and reviewers for their positive and constructive comments and suggestions on our manuscript. We have studied the comments carefully and have made corrections that we hope meet with your approval. Please find the revised version (all changes are marked in **red** and underlined), which we would like to submit for your kind consideration. We would like to express our great appreciation to you for providing comments on our paper. The following are my replies to your questions.

Reply to reviewer #1:

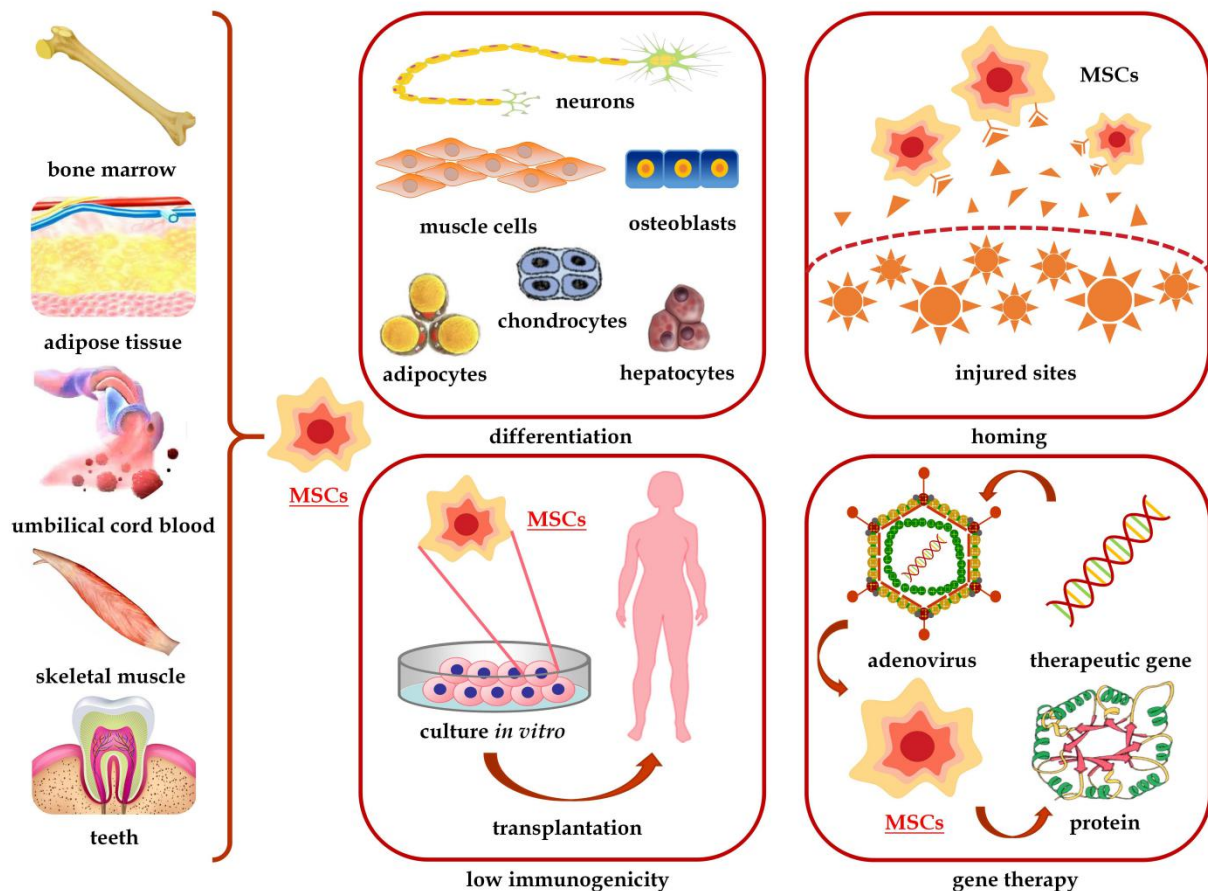
Review 1: Abbreviations for Mesenchymal stem cells "MSCs" is not consistent throughout manuscript. Also in Figure-1 is MSC and in text is MSCs. To be consistent throughout in figures and in text.

Reply 1: We greatly appreciate your careful review of our manuscript and apologize for our mistake. We have corrected the abbreviations of mesenchymal stem cells in the text and figure to MSCs, excluding the case of MSC as attribute. The following are the relevant positions.

In addition, dental pulp stem cells (DPSCs) are a type of MSCs that are used to repair periodontal tissues. In fact, in addition to forming odontoblasts, they can also differentiate into adipose, bone, cartilage, muscle, vascular endothelial, liver, and nerve cells, among others, through induction with different cytokines.

Takeshi Mizushima et al speculated that the therapeutic effect of foetal membrane or amniotic mesenchymal stem cells (AMSCs) transplantation on various diseases may be attributed to the factors secreted by the AMSCs; thus, conditioned medium (CM) obtained from AMSCs was used to explore its therapeutic effect on post-ESD stenosis.

The figure is shown as followd.



Review 2: Author mentioned about few clinical trials, would be interesting to include a short table for that.

Reply 2: Thank you for your valuable suggestion. A short table of clinical trials can indeed make the manuscript more readable. But this article only includes two references related to clinical trials. We are afraid that the number of clinical trials is not enough to form a table. In addition, the second reference related to clinical trials describes a clinical case of oesophageal disease patient transplanted with commercial stent and extracellular matrix. We quote this reference to try to explain the current situation of tissue engineering in the treatment of oesophageal disease, and on this basis, we show that the cooperation between stem cell therapy and tissue engineering is feasible and will have a broad development prospect. Although extracellular matrix may promote stem cell differentiation, this clinical trial doesn't involve stem cell transplantation technology, so we didn't include it in the table. Relevant references are listed as followd.

[1] Okamoto R, Yajima T, Yamazaki M, Kanai T, Mukai M, Okamoto S, Ikeda Y, Hibi T, Inazawa J, Watanabe M. Damaged epithelia regenerated by bone marrow-derived cells in the human gastrointestinal tract. Nat Med 2002; 8: 1011-1017 [PMID: 12195435 DOI: 10.1038/nm755]

[2] Dua KS, Hogan WJ, Aadam AA, Gasparri M. In-vivo oesophageal regeneration in a human being by use of a non-biological scaffold and extracellular matrix. Lancet 2016; 388: 55-61 [PMID: 27068836 DOI: 10.1016/S0140-6736(15)01036-3]

Review 3: Author include the software name for Figure 1 image, creation. As it is not simple Power Point.

Reply 3: Thank you for your concern at the software of Figure 1. The name of the software we used to draw this figure is WPS Office (11.1.0.9584-release). WPS Office , made up of three primary components: WPS Writer, WPS Presentation, and WPS Spreadsheet, is an office suite for Microsoft Windows, macOS, Linux, iOS and Android, developed by Chinese software developer Kingsoft. WPS Office can be compatible with the program of Microsoft PowerPoint.

Thank you again for your constructive advice. We have revised according to your advice, which makes this article look more perfect. I like the journal "World Journal of Stem Cells" very much, and I hope my article will be published in the "World Journal of Stem Cells" with great honor.

Sincerely,

Shizhu Jin, M.D., PhD, Professor, Corresponding Author

Address: Department of Gastroenterology, the Second Affiliated Hospital of Harbin Medical University, 246 Xuefu Street, Nan Gang District, Harbin, China.150081.

Email: drshizhujin@hrbmu.edu.cn.

Phone: +86-13654699988.