

Name of the journal: *The World Journal of Gastroenterology*

Manuscript NO: 54931

Manuscript Type: REVIEW

Histopathological landscape of rare oesophageal neoplasms

Businello *et al.* Rare oesophageal neoplasms

Gianluca Businello, Carlo Alberto Dal Pozzo, Marta Sbaraglia, Luca Mastracci, Massimo Milione, Luca Saragoni, Federica Grillo, Paola Parente, Andrea Remo, Elena Bellan, Rocco Cappellesso, Gianmaria Pennelli, Mauro Michelotto, Matteo Fassan

Abstract

The landscape of neoplastic pathology of the oesophagus is dominated by malignancies of epithelial origin, in particular by oesophageal adenocarcinoma and oesophageal squamous cell carcinoma. However, several other histopathological variants can be distinguished, some associated with peculiar histopathological profiles and prognostic behaviours and frequently underrecognized in clinical practice. ² The aim of this review is to provide a comprehensive characterization of the

Match Overview

1	Crossref 312 words "Oncological Surgical Pathology", Springer Science and Business Media LLC, 2020	3%
2	Internet 148 words crawled on 19-May-2020 worldwidescience.org	1%
3	Crossref 81 words Wen-shu Chen, Xiao-ling Zheng, Long Jin, Xiao-jie Pan, Ming-fan Ye. "Novel Diagnosis and Treatment of Esophageal ...	1%
4	Internet 74 words crawled on 06-Feb-2020 es.scribd.com	1%
5	Crossref 70 words Zheng Ma, Hongfei Cai, Youbin Cui. "Progress in the treatment of esophageal neuroendocrine carcinoma", Tumor Bi	1%
6	Crossref 66 words Essentials of Anatomic Pathology, 2016.	1%
7	Crossref 53 words "Imaging of Soft Tissue Tumors", Springer Science and Business Media LLC, 2017	<1%
8	Crossref 47 words Chia-Hao Liu, Wei-Ting Chao, Shih-Chieh Lin, Hei-Yu Lau, Hua-Hsi Wu, Peng-Hui Wang. "Malignant perivascular ep ...	<1%
9	Crossref 36 words "Blaustein's Pathology of the Female Genital Tract", Springer Science and Business Media LLC, 2019	<1%



国内版 国际版

The histopathological landscape of rare oesophageal ne



Sign in

ALL IMAGES VIDEOS

Add the Give with Bing extension

94,300 Results Any time

Including results for the histopathological landscape of rare **esophageal** neoplasms.
Do you want results only for The histopathological landscape of rare oesophageal neoplasms?

Molecular landscape of esophageal cancer: implications for ...

<https://www.ncbi.nlm.nih.gov/pubmed/29917250>

Esophageal cancer (EC) is one of the most lethal cancers and a public health concern worldwide, owing to late diagnosis and lack of efficient treatment. **Esophageal** squamous cell carcinoma (ESCC) and **esophageal** adenocarcinoma (EAC) are main **histopathological** subtypes of EC that show striking differences in geographical distribution, possibly due ...

Cited by: 6 Author: Fazlur Rahman Talukdar, Massimiliano di P...
Publish Year: 2018

Esophageal metastasis of renal cancer 10 years after ...

<https://www.ncbi.nlm.nih.gov/pmc/articles/PMC4297612>

Esophageal metastasis of renal cancer can sometimes be managed. If resection is possible, endoscopic or surgical resection is the treatment of first choice. If the tumor is unresectable, multidisciplinary treatment (including molecular-targeting therapy) will be needed. In conclusion, **esophageal** metastasis of renal cancer is extremely **rare**.

Cited by: 3 Author: Wataru Izumo, Masaho Ota, Kosuke Narum...
Publish Year: 2015

Images of the Histopathological Landscape of rare Esophageal Ne...

<bing.com/images>



See more images of the Histopathological Landscape of rare Esophageal Neoplasms

Related searches

malignant esophageal neoplasm
esophageal neoplasm **icd 10**

Search Tools

Turn on Hover Translation (开启取词)



Histopathological landscape of rare oesophageal neoplasms



ALL

IMAGES

VIDEOS

99,800 Results

Any time ▾

Including results for histopathological landscape of rare **esophageal** neoplasms.

Do you want results only for Histopathological landscape of rare oesophageal neoplasms?

histopathological study of esophageal cancer on the ...

<https://academic.oup.com/dote/article/21/4/322/2374275> ▾

Jun 01, 2008 · Upper, middle and lower third of the **esophagus** were the locations of **tumors** in 9.8%, 32.9% and 57.3% of cases, respectively. SCC was the most common histological type in the upper third (98.5%), middle third (98%) and lower third (89%) of the **esophagus**, whereas it comprised 17.7% of cancers of the gastro-**esophageal** junction.

Cited by: 97

Author: C. Gholipour, R. A. Shalchi, M. Abbasi

Publish Year: 2008

Histopathological, immunohistochemical, genetic and ...

<https://www.ncbi.nlm.nih.gov/pmc/articles/PMC6046289>

Apr 05, 2018 · **Rare** positivity in lung NENs , as well as high positivity in WD-NENs of the ovary along with an insular pattern has also been reported . Additionally, the expression of CDX2 in midgut **tumors** shows strong and diffuse nuclear staining, whereas in foregut and hindgut **tumors** ...

Cited by: 4

Author: Georgios Kyriakopoulos, Vasiliki Mavroei,...

Publish Year: 2018

Images of Histopathological Landscape of Rare esophageal Neopl...

<bing.com/images>



Histopathological landscape of rare oesophageal neopla



ALL

IMAGES

VIDEOS

MAPS

NEWS

SHOPPING

100,000 Results

Any time ▼

Including results for **histopathological landscape of rare esophageal** neoplasms.

Do you want results only for Histopathological landscape of rare oesophageal neoplasms?

Histopathological classification of esophageal carcinomas.

<https://www.ncbi.nlm.nih.gov/pubmed/16999377>

Histopathological classification of **esophageal** carcinomas. Vellone VG(1), Zannoni GF, Mulè A, Lauriola L. ... Some continuity exists between dysplastic lesions and frankly invasive **tumors**. Moreover **rare** hystological types have been described. The surgical pathologist plays an important role in evaluating small endoscopic biopsies as well as in ...

Cited by: 2

Author: Vellone Vg, Zannoni Gf, Mulè A, Lauriola L

Publish Year: 2006

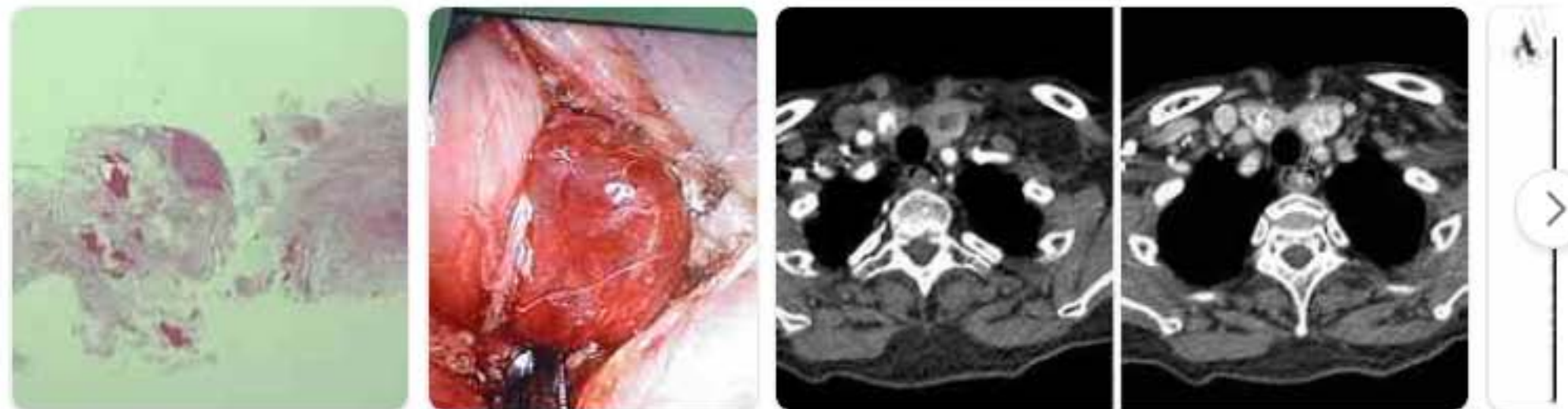
Related searches

malignant neoplasm of **esophagus**

esophageal neoplasm **icd 10**

Images of Histopathological Landscape of Rare esophageal Neopla...

<bing.com/images>



See all images >

Molecular landscape of esophageal cancer: implications for ...

<https://www.ncbi.nlm.nih.gov/pubmed/29917250>

<https://www.ncbi.nlm.nih.gov/pubmed/29917250> **Esophageal cancer (EC)** is one of the most lethal cancers and a public health concern worldwide, owing