

22

**Name of Journal:** *World Journal of Clinical Cases***Manuscript NO:** 56355**Manuscript Type:** MINIREVIEWS

Typical **and** atypical coronavirus disease 2019 computed tomography findings

Damiano Caruso, Tiziano Polidori, Gisella Guido, Matteo Nicolai, Benedetta Bracci, Antonio Cremona, Marta Zerunian, Michela Polici, Francesco Pucciarelli, Carlotta Rucci, Chiara De Dominicis, Marco Di Girolamo, Giuseppe Argento, Daniela Sergi, Andrea Laghi

## Match Overview

1	<b>Internet</b> 80 words crawled on 07-Apr-2020 <a href="https://pubs.rsna.org">pubs.rsna.org</a>	2%
2	<b>Internet</b> 76 words crawled on 15-Jul-2020 <a href="https://radiologykey.com">radiologykey.com</a>	2%
3	<b>Crossref</b> 52 words Fabrizio Albarello, Elisa Pianura, Federica Di Stefano, Massimo Cristofaro et al. "2019-novel Coronavirus severe adult r	2%
4	<b>Internet</b> 43 words crawled on 04-Jul-2020 <a href="https://epos.myesr.org">epos.myesr.org</a>	
5	<b>Internet</b> 40 words crawled on 14-Jul-2020 <a href="https://link.springer.com">link.springer.com</a>	1%
6	<b>Internet</b> 38 words crawled on 24-Nov-2016 <a href="https://www.authorstream.com">www.authorstream.com</a>	1%
7	<b>Internet</b> 34 words crawled on 27-Jun-2020 <a href="https://software-ab.informatik.uni-tuebingen.de">software-ab.informatik.uni-tuebingen.de</a>	1%
8	<b>Internet</b> 33 words crawled on 07-May-2020 <a href="https://www.ajronline.org">www.ajronline.org</a>	1%







Typical and atypical COVID-19 CT findings



Sign in



ALL

IMAGES

VIDEOS

7,810,000 Results

Any time ▾

## COVID-19 pneumonia: A review of typical CT findings and ...

<https://www.sciencedirect.com/science/article/pii/S2211568420300917>

**Typical imaging findings** A wide variety of **CT findings** in **COVID-19** have been reported in the different studies,. However, all studies indicate that the main **CT** feature of **COVID-19 pneumonia** is the presence of ground **glass opacities** (GGO), typically with a peripheral and subpleural distribution (Fig. 1).

## COVID-19 | Radiology Reference Article | Radiopaedia.org

<https://radiopaedia.org/articles/covid-19> ▾

Mar 11, 2020 · The primary **findings** of **COVID-19** on **chest radiograph** and **CT** are those of **atypical pneumonia** 40 or organizing pneumonia 32,34. However imaging has limited sensitivity for **COVID-19**, as up to 18% demonstrate normal **chest radiographs** or **CT** when mild or early in the disease course, but this decreases to 3% in severe disease 89,93.

## [PDF] Example Reports of Typical, Indeterminate, Atypical, and ...

<https://www.rsna.org/-/media/Files/RSNA/Covid-19/...>

Example Reports of **Typical**, Indeterminate, **Atypical**, and Negative Category CTs, with some selected correlative ... **typical** for **COVID-19** pneumonia. Commonly reported imaging features of (**COVID-19**) pneumo- ... Consensus Statement on Reporting Chest **CT Findings** Re-lated to **COVID-19**. Endorsed by the Society of Thoracic Radiology, the American

## Related searches

atypical **symptoms of** covid 19

atypical **pneumonia** covid 19

atypical covid **presentation**

atypical **pneumonia** covid

covid 19 **structure** and **function**

covid 19 **glycoprotein**

covid 19 **viral structure**

covid 19 **cell entry**

## Search Tools

Turn off Hover Translation (关闭取词)



156,000 Results    Any time

### Different computed tomography patterns of Coronavirus ...

<https://www.nature.com/articles/s41598-020-68057-4>

This study aimed to compare the chest **computed tomography** (CT) **findings** between survivors and non-survivors with **Coronavirus Disease 2019** (COVID-19). Between 12 ...

### Coronavirus Disease 2019 (COVID-19) CT Findings: A ...

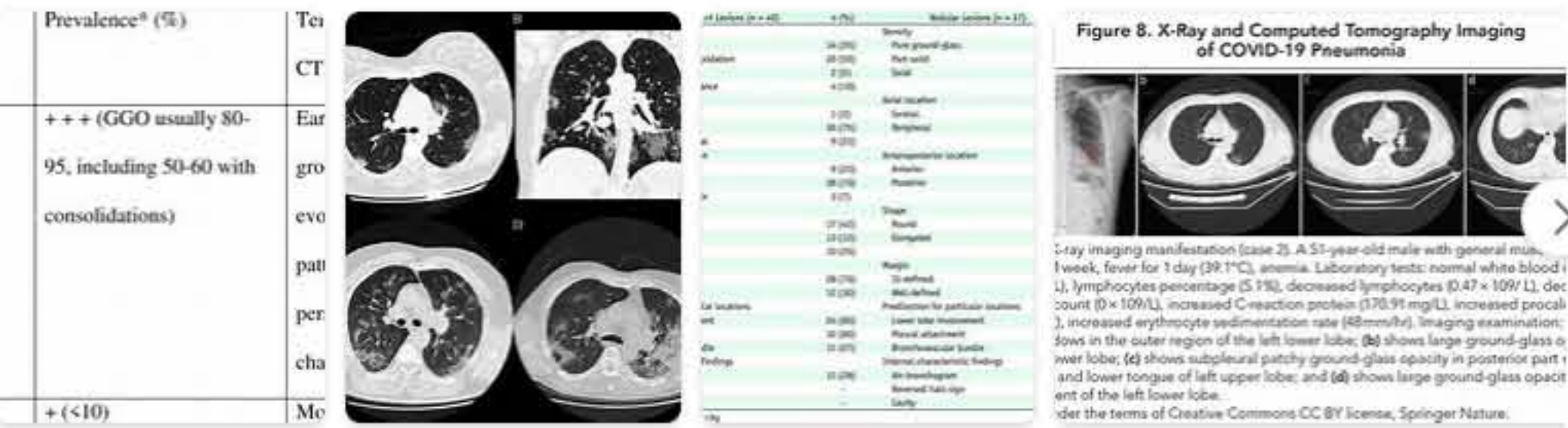
<https://pubmed.ncbi.nlm.nih.gov/32283052>

Purpose: To date, considerable knowledge gaps remain regarding the chest CT imaging features of **coronavirus disease 2019** (COVID-19). We performed a systematic review and meta-analysis of results from published studies to date to provide a summary of evidence on detection of **COVID-19** by chest CT and the expected CT imaging manifestations.

**Cited by:** 6      **Author:** Cuiping Bao, Xuehuan Liu, Han Zhang, Y...  
**Publish Year:** 2020

### Images of Typical and Atypical Coronavirus Disease 2019 co...

<bing.com/images>



See all images

### Diagnostic Value and Key Features of Computed ...

<https://pubmed.ncbi.nlm.nih.gov/32241244>

Typical CT findings included **bilateral ground-glass opacity**, **pulmonary consolidation**, and **prominent distribution in the posterior and peripheral parts of the lungs**. This review also provides a comparison between COVID-19 and other diseases that have similar CT findings.

**Cited by:** 4      **Author:** Bingjie Li, Xin Li, Yaxuan Wang, Yikai Ha...  
**Publish Year:** 2020

### Computed Tomography Manifestations of 5 Cases of the ...

<https://www.ncbi.nlm.nih.gov/pubmed/32195887>

Mar 17, 2020 · Clinical, laboratory, and **computed tomography** (CT) **findings** of 5 cases of the novel **Coronavirus Disease 2019** (COVID-19) pneumonia from patients outside of Wuhan were reviewed. The human-to-human transmission of the virus may explain the infection of the **disease** outside of Wuhan.

**Cited by:** 1      **Author:** Tao Lu, Hong Pu  
**Publish Year:** 2020

### Quantitative computed tomography of the coronavirus ...

<https://www.sciencedirect.com/science/article/pii/S2352621120300358>

To quantify **coronavirus diseases 2019** (COVID-19) pneumonia and to explore whether quantitative computer **tomography** (CT) could be used to assess severity on admission. Materials and methods From January 17 to February 9, 2020, 38 hospitalized patients with **COVID-19** pneumonia were consecutively enrolled in our hospitals.

**Author:** Zenghui Cheng, Le Qin, Qiqi Cao, Jia...      **Publish Year:** 2020

### Chest CT Features of Coronavirus Disease 2019 (COVID-19 ...

<https://pubmed.ncbi.nlm.nih.gov/32500509>

This paper reports the CT findings with some hints on the temporal changes over the course of the disease: the CT hallmarks of COVID-19 are **bilateral distribution of ground glass opacities with or without consolidation in the posterior and peripheral lung**, but the **predominant findings in later phases** include **consolidations**, **linear opacities**, **"crazy-paving" pattern**, **"reversed halo" sign** and **vascular enlargement**.

Some results are removed in response to a notice of local law requirement. For more information, please see [here](#).







ALL

IMAGES

VIDEOS

MAPS

NEWS

SHOPPING

533,000 Results

Any time ▾

## COVID-19 pneumonia: A review of typical CT findings and ...

<https://www.sciencedirect.com/science/article/pii/S2211568420300917>

**Typical imaging findings** A wide variety of **CT findings** in **COVID-19** have been reported in the different studies,. However, all studies indicate that the main CT feature of **COVID-19 pneumonia** is the presence of ground glass opacities (GGO), **typically** with a peripheral and subpleural distribution (Fig. 1).

**Cited by:** 7

**Author:** C. Hani, N.H. Trieu, I. Saab, S. Dangeard...

**Publish Year:** 2020

## COVID-19 Pneumonia - Quantitative Assessment - Siemens ...

<https://www.siemens-healthineers.com/vn/computed...> ▾

**COVID-19** pneumonia is a highly contagious viral pneumonia caused by a novel coronavirus (SARS-CoV-2) of unclear origin. A chest CT is essential for the diagnostic work-up, with a common finding of a rather mixed and diverse pattern involving both lung parenchyma and lung interstitium.

## Chest Computed Tomography Findings in COVID-19 and ...

<https://www.hindawi.com/journals/bmri/2020/6928368> ▾

**Objective** . The **COVID-19** pandemic and annual influenza epidemic are responsible for thousands of deaths globally. With a similarity in clinical as well as laboratory **findings**, there is a need to differentiate these two conditions on chest CT scan. This paper attempts to use existing literature to draw out differences in chest CT **findings** in **COVID-19** and influenza. *Methods*.

**Cited by:** 3

**Author:** Stephen O. Onigbinde, Ademola S. Ojo, ...

**Publish Year:** 2020

## CT differential diagnosis of COVID-19 and non-COVID-19 in ...

<https://link.springer.com/content/pdf/10.1186/s12890-020-1170-6.pdf>

**Abstract Background:** Although **typical and atypical CT image findings** of **COVID-19** are reported in current studies, the **CT image** features of **COVID-19** overlap with those of viral pneumonia and other respiratory diseases. Hence, it is difficult to make an exclusive diagnosis.

## Computed Tomography Manifestations of 5 Cases of the Novel ...

<https://www.ncbi.nlm.nih.gov/pubmed/32195887>