

1 / 18

Name of Journal: *World Journal of Clinical Cases***Manuscript NO:** 56360**Manuscript Type:** CASE REPORT**Primary pulmonary plasmacytoma accompanied by overlap syndrome: A case report and review of literature**

Yi Zhou, Xiao-Hong Wang, Shuang-Shuang Meng, Hui-Chao Wang, Yu-Xia Li, Rui Xu, Xu-Hong Lin

Abstract**BACKGROUND**

Extramedullary plasmacytoma (EMP) is a rare kind of plasma cell neoplasm within soft tissue but without bone marrow involvement; this type of plasma cell neoplasm involves a lack of other systemic characteristics of multiple myeloma. Primary pulmonary plasmacytoma (PPP), with no specific clinical manifestations, is an

Match Overview

1	Internet 150 words crawled on 19-Aug-2020 mafiadoc.com	4%
2	Internet 77 words crawled on 09-Jan-2018 ascopubs.org	2%
3	Internet 36 words crawled on 09-Jul-2020 www.hindawi.com	1%
4	Crossref 31 words Sen Wei, Xin Li, Zuoqing Song, Honglin Zhao, Xiaomin Qiu, Lei Gong, Jun Chen, Qinghua Zhou. "Primary Endobronchia	1%
5	Internet 29 words crawled on 10-Dec-2016 www.scielo.br	1%
6	Internet 28 words crawled on 19-Nov-2012 www.ncbi.nlm.nih.gov	1%
7	Crossref 22 words ZHE-YI DONG, HAI-TAO XING, YUAN-DA WANG, WEI ZHANG, QIANG QIU, XIANG-MEI CHEN. "Multiple myeloma with	1%
8	Crossref 18 words Soutar, R.. "Guidelines on the diagnosis and management ... of solitary plasmacytoma of bone and solitary extramedullar	1%

Primary pulmonary plasmacytoma accompanied by overlap syndrom



ALL

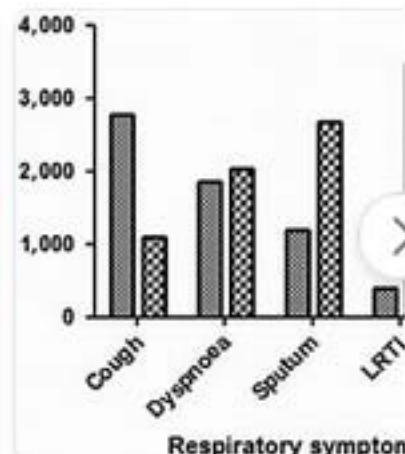
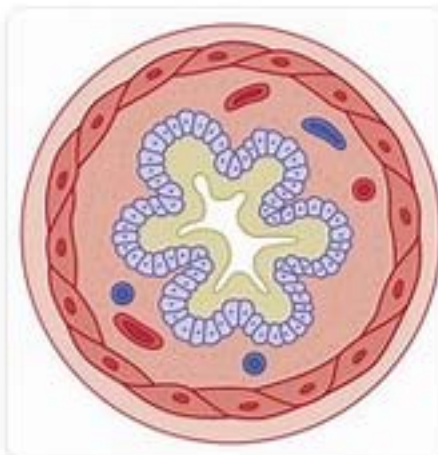
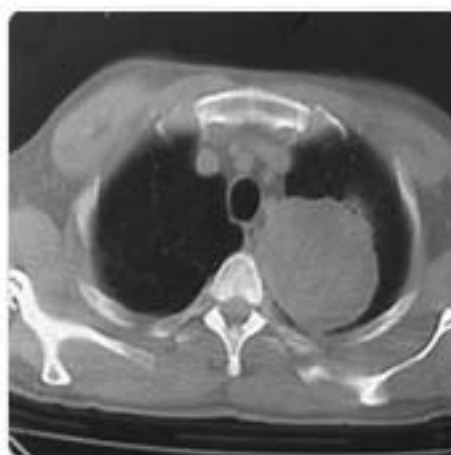
IMAGES

VIDEOS

56,000 Results

Any time ▾

Images of Primary Pulmonary plasmacytoma Accompan...

bing.com/images

[See all images >](#)

Prevalence of asthma–COPD overlap syndrome among ...

<https://www.ncbi.nlm.nih.gov/pmc/articles/PMC4504195>

Asthma and chronic obstructive pulmonary disease (COPD) are the two most common obstructive pulmonary diseases. Although asthma and COPD most often represent two distinct diseases, there is also significant overlap between these two diseases.^{1,2} The definition of asthma–COPD overlap syndrome (ACOS) is undetermined.

Cited by: 29

Author: Toni Kiljander, Timo Helin, Kari Venho, A...

Publish Year: 2015

Pulmonary Overlap Syndromes, with a focus on COPD and ILD

<https://www.ncbi.nlm.nih.gov/pmc/articles/PMC4671775>

First described in the 1980s by pulmonologist David Flenley, "overlap" syndromes refer to the coexistence of chronic lung disease and obstructive sleep apnea (OSA).¹ Although it could refer to



30,500 Results Any time ▾

Asthma-chronic obstructive pulmonary disease overlap ...

<https://www.ncbi.nlm.nih.gov/pmc/articles/PMC3966158>

Mar 02, 2014 · Asthma and COPD may **overlap** and converge, especially in older people [**overlap syndrome**—asthma-chronic obstructive **pulmonary** disease **overlap syndrome** (ACOS)]. Although ACOS accounts approximately 15-25% of the obstructive airway diseases, is not well recognised because of the structure of clinical trials.

Cited by: 160**Author:** Antonis Papaiwannou, Paul Zarogoulidis, ...**Publish Year:** 2014

Frontiers | Overlap Syndrome Involving Systemic Lupus ...

<https://www.frontiersin.org/articles/10.3389/fped.2019.00310> ▾

< **Background** Case Presentation Discussion Conclusion Ethic >

Systemic lupus erythematosus (SLE) is a systemic autoimmune disease characterized by multiple clinical features and autoantibody series; its diagnostic criteria have been modified over the past 40 years with discoveries regarding its pathophysiology and clinical nature (2) SLE affects the central nervous system, cardiovascular system, lungs, liver, kidneys, joints, and skin (3). Autoimmune hepatitis (AIH) presents as generally unresolved inflammation of the liver of unknown cause and it is characterized by autoantibodi...

[See more on frontiersin.org](#)**Author:** Wan Tz Lai, Wan-Hua Cho, Wan-Hua ...**Publish Year:** 2019

[PDF] Clinical Aspects of Overlap Syndrome - Case Report and ...

www.fortunejournals.com/articles/pclinical-aspects...

We **report** a patient with **overlap syndrome** (systemic sclerosis (SSc) and polymyositis (PM)). The heterogeneous nature of systemic sclerosis may lead to a great diversity in the clinical presentation of the disease. With this **case report** we aim to demonstrate clinical manifestations of systemic sclerosis and polymyositis in an **overlap-syndrome**,

Clinical Aspects of Overlap Syndrome - Case Report and ...

https://www.researchgate.net/publication/326204172_Clinical_Aspects_of_Overlap...Request PDF | On Jan 1, 2018, Bogna Grygiel-Górniak and others published Clinical Aspects of **Overlap****Syndrome - Case Report and Literature Review** | Find, read and cite all the research you need ...

Overlap syndrome

Medical Condition

An overlap syndrome is a medical condition which shares features of at least two more widely recognised disorders. Examples of overlap syndromes can be found in many medical specialties such as overlapping connective tissue disorders in rheumatology, and overlapping genetic disorders in cardiology.



People also search for

[Mixed Connective Tissue Disease](#)[Sjögren syndrome](#)[Systemic Lupus Erythematosus](#)[Ankylosing Spondylitis](#)[Behcet's Syndrome](#)[See more](#) ▾

Data from: Wikipedia

[Suggest an edit](#)