

# World Journal of *Clinical Cases*

*World J Clin Cases* 2020 July 26; 8(14): 2893-3135



## Contents

Semimonthly Volume 8 Number 14 July 26, 2020

## EXPERT RECOMMENDATIONS

- 2893 Recommendations for perinatal and neonatal surgical management during the COVID-19 pandemic  
*Ma LS, Zhao YL, Wei YD, Liu C*

## MINIREVIEWS

- 2902 Clinical applicability of gastroscopy with narrow-band imaging for the diagnosis of *Helicobacter pylori* gastritis, precancerous gastric lesion, and neoplasia  
*Cho JH, Jeon SR, Jin SY*

## ORIGINAL ARTICLE

## Clinical and Translational Research

- 2917 Identification of APEX2 as an oncogene in liver cancer  
*Zheng R, Zhu HL, Hu BR, Ruan XJ, Cai HJ*

## Retrospective Cohort Study

- 2930 Restenosis after recanalization for Budd-Chiari syndrome: Management and long-term results of 60 patients  
*Zhang W, Tian YL, Wang QZ, Chen XW, Li QY, Han JH, Chen XD, Xu K*

## Retrospective Study

- 2942 Comparison of microendoscopic discectomy and open discectomy for single-segment lumbar disc herniation  
*Pang JY, Tan F, Chen WW, Li CH, Dou SP, Guo JR, Zhao LY*
- 2950 Clinical characteristics of patients with COVID-19 presenting with gastrointestinal symptoms as initial symptoms: Retrospective case series  
*Yang TY, Li YC, Wang SC, Dai QQ, Jiang XS, Zuo S, Jia L, Zheng JB, Wang HL*

## Observational Study

- 2959 Effects of policies and containment measures on control of COVID-19 epidemic in Chongqing  
*Liang XH, Tang X, Luo YT, Zhang M, Feng ZP*
- 2977 Role of shear wave elastography in the evaluation of the treatment and prognosis of supraspinatus tendinitis  
*Zhou J, Yang DB, Wang J, Li HZ, Wang YC*
- 2988 Endoscopic retrograde cholangiopancreatography in elderly patients: Difficult cannulation and adverse events  
*Tabak F, Wang HS, Li QP, Ge XX, Wang F, Ji GZ, Miao L*

- 3000** Diagnostic value of orbicularis oculi muscle electromyography in functional epiphora

*Lu H, Liu PD, Yao X, Wang ZF, Gao LF, Wang SP*

### META-ANALYSIS

- 3006** Diagnostic value of liquid-based cytology and smear cytology in pancreatic endoscopic ultrasound-guided fine needle aspiration: A meta-analysis

*Pan HH, Zhou XX, Zhao F, Chen HY, Zhang Y*

### SCIENTOMETRICS

- 3021** Bibliometric analysis of randomized controlled trials of colorectal cancer over the last decade

*Wang CY, Zhou SC, Li XW, Li BH, Zhang JJ, Ge Z, Zhang Q, Hu JH*

### CASE REPORT

- 3031** Spontaneous pneumothorax in a single lung transplant recipient-a blessing in disguise: A case report

*Deshwal H, Ghosh S, Hogan K, Akindipe O, Lane CR, Mehta AC*

- 3039** Endoscopic third ventriculostomy in obstructive hydrocephalus: A case report and analysis of operative technique

*Munda M, Spazzapan P, Bosnjak R, Velnar T*

- 3050** Underwater endoscopic mucosal resection for neoplasms in the pyloric ring of the stomach: Four case reports

*Kim DH, Park SY, Park CH, Kim HS, Choi SK*

- 3057** Successful treatment of basaloid squamous cell carcinoma in the rectosigmoid colon: A case report and review of literature

*Lee TG, Yoon SM, Kim MJ*

- 3064** Synchronous sporadic bilateral multiple chromophobe renal cell carcinoma accompanied by a clear cell carcinoma and a cyst: A case report

*Yang F, Zhao ZC, Hu AJ, Sun PF, Zhang B, Yu MC, Wang J*

- 3074** Intra-abdominal hemorrhage during pregnancy: Four case reports

*Yang L, Liu N, Long Y*

- 3082** Pulmonary benign metastasizing leiomyoma: A case report and review of the literature

*Dai HY, Guo SL, Shen J, Yang L*

- 3090** Mucoepidermoid carcinoma in the infratemporal fossa: A case report

*Zhang HY, Yang HY*

- 3097** Intra-abdominal inflammatory pseudotumor-like follicular dendritic cell sarcoma associated with paraneoplastic pemphigus: A case report and review of the literature

*Zhuang JY, Zhang FF, Li QW, Chen YF*

- 3108** Multiple recurrent cystic echinococcosis with abdominal aortic involvement: A case report  
*Taxifulati N, Yang XA, Zhang XF, Aini A, Abulizi A, Ma X, Abulati A, Wang F, Xu K, Aji T, Shao YM, Ahan A*
- 3114** Dental focal infection-induced ventricular and spinal canal empyema: A case report  
*Xue H, Wang XH, Shi L, Wei Q, Zhang YM, Yang HF*
- 3122** Effect of chidamide on treating hepatosplenic T-cell lymphoma: A case report  
*Wang XT, Guo W, Sun M, Han W, Du ZH, Wang XX, Du BB, Bai O*
- 3130** Acute esophageal obstruction caused by reverse migration of gastric bezoars: A case report  
*Zhang FH, Ding XP, Zhang JH, Miao LS, Bai LY, Ge HL, Zhou YN*

**ABOUT COVER**

Editorial Board Member of *World Journal of Clinical Cases*, Dr. Iva Brčić finished medical studies at the Medical University of Graz and received her MD degree in 2003. She received her doctoral degree in 2006 at the same institution. In 2007, she enrolled in the pathology residency program at the University Hospital Center Zagreb. In 2012, she passed her board exam and, until 2015, worked as a staff pathologist at the University Hospital Center Zagreb. From 2015, she is working as the University Assistant at the Medical University of Graz. At the end of 2017, she joined the bone and soft tissue team and spent 4-mo observership at the University of Miami, FL, USA. Her ongoing research interests include bone and soft tissue neoplasms.

**AIMS AND SCOPE**

The primary aim of *World Journal of Clinical Cases* (*WJCC*, *World J Clin Cases*) is to provide scholars and readers from various fields of clinical medicine with a platform to publish high-quality clinical research articles and communicate their research findings online.

*WJCC* mainly publishes articles reporting research results and findings obtained in the field of clinical medicine and covering a wide range of topics, including case control studies, retrospective cohort studies, retrospective studies, clinical trials studies, observational studies, prospective studies, randomized controlled trials, randomized clinical trials, systematic reviews, meta-analysis, and case reports.

**INDEXING/ABSTRACTING**

The *WJCC* is now indexed in Science Citation Index Expanded (also known as SciSearch®), Journal Citation Reports/Science Edition, PubMed, and PubMed Central. The 2020 Edition of Journal Citation Reports® cites the 2019 impact factor (IF) for *WJCC* as 1.013; IF without journal self cites: 0.991; Ranking: 120 among 165 journals in medicine, general and internal; and Quartile category: Q3.

**RESPONSIBLE EDITORS FOR THIS ISSUE**

Electronic Editor: Ji-Hong Liu, Production Department Director: Xiang Li, Editorial Office Director: Jin-Lai Wang.

**NAME OF JOURNAL**

*World Journal of Clinical Cases*

**ISSN**

ISSN 2307-8960 (online)

**LAUNCH DATE**

April 16, 2013

**FREQUENCY**

Semimonthly

**EDITORS-IN-CHIEF**

Dennis A Bloomfield, Sandro Vento, Bao-Gan Peng

**EDITORIAL BOARD MEMBERS**

<https://www.wjgnet.com/2307-8960/editorialboard.htm>

**PUBLICATION DATE**

July 26, 2020

**COPYRIGHT**

© 2020 Baishideng Publishing Group Inc

**INSTRUCTIONS TO AUTHORS**

<https://www.wjgnet.com/bpg/gerinfo/204>

**GUIDELINES FOR ETHICS DOCUMENTS**

<https://www.wjgnet.com/bpg/GerInfo/287>

**GUIDELINES FOR NON-NATIVE SPEAKERS OF ENGLISH**

<https://www.wjgnet.com/bpg/gerinfo/240>

**PUBLICATION ETHICS**

<https://www.wjgnet.com/bpg/GerInfo/288>

**PUBLICATION MISCONDUCT**

<https://www.wjgnet.com/bpg/gerinfo/208>

**ARTICLE PROCESSING CHARGE**

<https://www.wjgnet.com/bpg/gerinfo/242>

**STEPS FOR SUBMITTING MANUSCRIPTS**

<https://www.wjgnet.com/bpg/GerInfo/239>

**ONLINE SUBMISSION**

<https://www.f6publishing.com>



## Recommendations for perinatal and neonatal surgical management during the COVID-19 pandemic

Li-Shuang Ma, Yun-Long Zhao, Yan-Dong Wei, Chao Liu

**ORCID number:** Li-Shuang Ma 0000-0001-5708-9315; Yun-Long Zhao 0000-0002-5626-3446; Yan-Dong Wei 0000-0003-3991-1410; Chao Liu 0000-0002-6565-2494.

**Author contributions:** All authors drafted part of the manuscript and approved the final version.

**Conflict-of-interest statement:** All the authors declare no conflicts of interest related to this manuscript.

**Open-Access:** This article is an open-access article that was selected by an in-house editor and fully peer-reviewed by external reviewers. It is distributed in accordance with the Creative Commons Attribution NonCommercial (CC BY-NC 4.0) license, which permits others to distribute, remix, adapt, build upon this work non-commercially, and license their derivative works on different terms, provided the original work is properly cited and the use is non-commercial. See: <http://creativecommons.org/licenses/by-nc/4.0/>

**Manuscript source:** Invited manuscript

**Received:** May 19, 2020

**Peer-review started:** May 19, 2020

**First decision:** June 4, 2020

**Revised:** June 15, 2020

**Accepted:** June 29, 2020

**Li-Shuang Ma, Yun-Long Zhao,** Department of Neonatal Surgery, Peking Union Medical College, Chinese Academy of Medical Sciences, Capital Institute of Pediatrics, Affiliated Children's Hospital, Beijing 100020, China

**Yan-Dong Wei, Chao Liu,** Department of Neonatal Surgery, Capital Institute of Pediatrics, Affiliated Children's Hospital, Beijing 100020, China

**Corresponding author:** Li-Shuang Ma, MD, PhD, Chief Doctor, Professor, Department of Neonatal Surgery, Peking Union Medical College, Chinese Academy of Medical Sciences, Capital Institute of Pediatrics, Affiliated Children's Hospital, No. 2, Ya-Bao Road, Chaoyang District, Beijing 100020, China. [malishuang2006@sina.com](mailto:malishuang2006@sina.com)

### Abstract

Coronavirus disease 2019 (COVID-19) caused by severe acute respiratory syndrome coronavirus 2 has spread rapidly around the world and is a significant threat to global health. Patients in the Neonatal Surgery Department have rapidly progressing diseases and immature immunity, which makes them vulnerable to pulmonary infection and a relatively higher mortality. This means that these patients require multidisciplinary treatment including early diagnosis, timely transport, emergency surgery and intensive critical care. The COVID-19 pandemic poses a threat to carrying out these treatments. To provide support for the health protection requirements of the medical services in the Neonatal Surgery Department, we developed recommendations focusing on patient transport, surgery selection and protection requirements with the aim of improving treatment strategies for patients and preventing infection in medical staff during the current COVID-19 pandemic.

**Key words:** Surgical management; Pediatrics; Neonates; Protection; Recommendation; COVID-19

©The Author(s) 2020. Published by Baishideng Publishing Group Inc. All rights reserved.

**Core tip:** We have developed recommendations focused on practices such as patient transport, surgery selection and protection requirements in the Neonatal Surgery Department, with the aim of improving treatment strategies for patients and preventing infection in medical staff during the current coronavirus disease 2019 pandemic.



Article in press: June 29, 2020

Published online: July 26, 2020

P-Reviewer: Machairas N,  
Mastoraki A, Pavone V

S-Editor: Ma YJ

L-Editor: Filipodia

E-Editor: Liu JH



**Citation:** Ma LS, Zhao YL, Wei YD, Liu C. Recommendations for perinatal and neonatal surgical management during the COVID-19 pandemic. *World J Clin Cases* 2020; 8(14): 2893-2901

**URL:** <https://www.wjgnet.com/2307-8960/full/v8/i14/2893.htm>

**DOI:** <https://dx.doi.org/10.12998/wjcc.v8.i14.2893>

## INTRODUCTION

Since December 2019, the novel coronavirus infection has spread rapidly, posing a significant threat to global health. As a tertiary referral hospital and one of the National Clinical Research Centers for Child Health and the National Children's Medical Centers, our center provides care for a large proportion of prenatal and neonatal cases in north China and has accumulated plentiful practical experience in patient transport and treatment. Following the latest national recommendations for diagnosis and treatment of coronavirus disease 2019 (COVID-19), we have developed recommendations focusing on practices such as patient transport, surgery selection and protection requirements in the neonatal surgery department, aiming to improve treatment strategies for patients and prevent infection in medical staff during the current COVID-19 pandemic.

This recommendation is in accordance with the latest "Guideline for the Diagnosis and Treatment of COVID-19 Infections" (version 7) (National Health Committee of China)<sup>[1]</sup>, "The Coronavirus Disease 2019 (COVID-19) Treatment Guidelines" published by the National Institutes of Health (United States) (Updated: May 12, 2020)<sup>[2]</sup> and other literature and experts' consensus related to COVID-19 published recently, combined with the procedures performed in the institution and our previous clinical treatment experience<sup>[3-8]</sup>.

## EPIDEMIOLOGY

COVID-19 is caused by severe acute respiratory syndrome coronavirus 2 (SARS-CoV-2), which has been identified as the seventh type of coronavirus to infect humans<sup>[9]</sup>. These coronaviruses are classified into four genera, based on their genome characteristics:  $\alpha$ -CoV,  $\beta$ -CoV,  $\gamma$ -CoV and  $\delta$ -CoV<sup>[10]</sup>. According to deep sequencing, SARS-CoV-2 belongs to  $\beta$ -CoV<sup>[9]</sup>.

It is thought that SARS-CoV-2 is spread mainly through respiratory droplets or close contact<sup>[11]</sup>. In the later stage of infection, the virus has also been detected in anal swabs from patients, which suggests the possibility of transmission *via* the oral-fecal route<sup>[11]</sup>. However, there is currently no evidence of vertical transmission of SARS-CoV-2 *via* intrauterine infection in women who develop COVID-19 pneumonia. In addition, there are no reports of patients' breast milk testing positive for the virus. However, after birth a newborn is susceptible to the virus due to person-to-person spread<sup>[12-14]</sup>.

The epidemiology of COVID-19 in neonates may have its own pattern. Droplet transmission and close contact with infected individuals are the main causes of SARS-CoV-2 infection in neonates, and most neonatal cases have been found in infected family clusters<sup>[15]</sup>. A study on 9 infected infants reported by Wei *et al*<sup>[16]</sup> found that all these infants belonged to a family cluster. The first infected neonate in China, a 17-day-old male infant, was reported to contract the infection *via* contact with his parents<sup>[17]</sup>.

According to current epidemiological data, COVID-19 has an incubation period ranging from 1 to 14 d, but mainly from 3 to 7 d<sup>[18]</sup>. Clinical symptoms in pediatric patients are relatively milder compared with those in adult patients. Most infected children have mild clinical manifestations. They may be asymptomatic or have fever, dry cough and fatigue. Some infected children experience gastrointestinal symptoms such as nausea, vomiting and diarrhea. Most pediatric patients recover within 1-2 wk after disease onset. Few may progress to lower respiratory tract infections<sup>[6,16,17,19]</sup>.

Real-time reverse transcriptase polymerase chain reaction of nasal and pharyngeal swabs, sputum, blood, feces and urine specimens can be used for the diagnosis of COVID-19<sup>[20]</sup>. A chest computed tomography (CT) scan can help physicians monitor disease changes and evaluate therapeutic effects<sup>[21]</sup>.

## HOSPITAL ADMISSIONS IN THE NEONATAL SURGERY DEPARTMENT DURING THE COVID-19 PANDEMIC

Neonates can develop a range of complex and diverse diseases mainly involving hereditary factors and other abnormalities. As a result of their anatomical and physiological characteristics (especially their immature immunity), neonate diseases progress quickly. Without timely treatment these patients can deteriorate within a short time with high mortality. Due to the advances in prenatal diagnostic techniques, more and more patients who require surgical treatment, such as those with congenital diaphragmatic hernia, congenital intestinal atresia and omphalocele, can be detected by antenatal ultrasonography. Patients admitted to the hospital are mainly transferred from outpatient services, emergency departments and other hospitals.

### ***Emergency and outpatient admissions***

The evaluation and management process of patients in the emergency and outpatient departments is as follows.

Only one parent is allowed to accompany a child into the consulting room; body temperature and medical history are taken at the entrance.

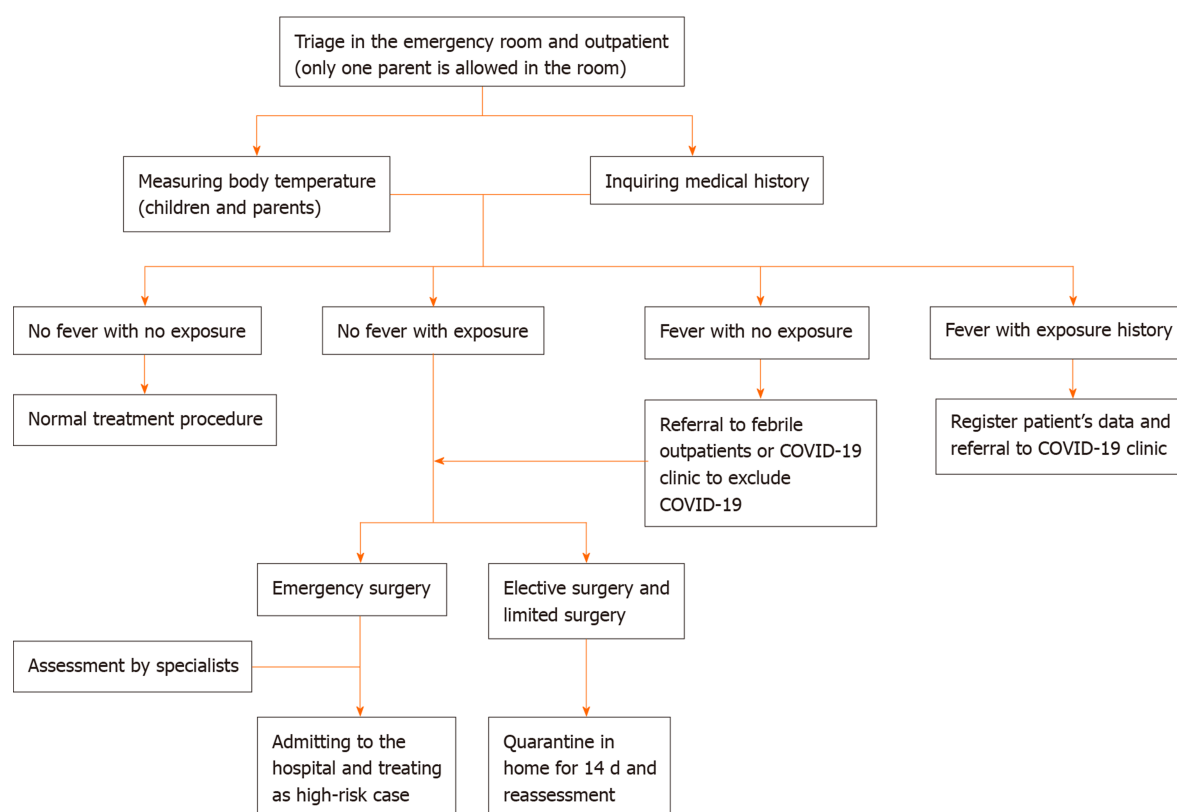
All patients with suspected COVID-19 should attend the febrile outpatient or COVID-19 clinic before visiting the neonatal surgery clinic. Patients with symptoms such as nausea, vomiting and diarrhea due to diseases such as congenital hypertrophic pyloric stenosis, Hirschsprung disease and congenital intestinal malrotation should be differentiated from COVID-19 patients. We recommend real-time reverse transcriptase polymerase chain reaction and a chest CT scan for patients with suspected COVID-19 in addition to routine examinations. COVID-19 pneumonia manifests with chest CT imaging abnormalities early and in asymptomatic patients. Multiple patchy ground glass opacities in bilateral multiple lobular with periphery distribution are typical chest CT imaging features of the COVID-19 pneumonia<sup>[2]</sup>. Combining assessment of imaging features with clinical and laboratory findings could facilitate early diagnosis of COVID-19 pneumonia<sup>[2]</sup>. Patients definitively diagnosed with emergency surgical conditions should be admitted as soon as possible for further treatment. Patients who test positive for SARS-CoV-2 or those highly suspected of having COVID-19 should be transferred to a designated medical institution immediately and should be reported to the local Center for Disease Control and Prevention (Figure 1).

### ***Patients transferred from other hospitals (interhospital consultation and referral practices)***

Patients diagnosed prenatally with abnormalities that require surgery, such as congenital diaphragmatic hernia, congenital intestinal atresia, meconium peritonitis and omphalocele, who were born in non-epidemic areas and had no contact with COVID-19 patients, can be transferred under general protection and treated with routine procedures. If patients are in an unstable condition and require emergency surgery, such as for severe congenital diaphragmatic hernia and omphalocele, neonatal surgeons should wait in the delivery room/operating room and perform the operation immediately or transfer the patients to appropriate medical institutions for further treatment after delivery under intensive care and monitoring. For children in a stable condition who require elective surgical treatment, we suggest a remote consultation with neonatal specialists and give conservative treatment and support until the appropriate operation can be performed.

Patients who had a history of epidemiological exposure to COVID-19 or were born in epidemic areas should be transferred to and treated in designated medical institutions for COVID-19. Although there is no evidence of intrapartum transmission, special attention is required to prevent infection in babies born to mothers with COVID-19 pneumonia. Admitting pregnant women with laboratory-confirmed COVID-19 pneumonia to designated medical institutions for COVID-19 and advance notification to the neonatal surgical team before delivery are suggested if the neonates were prenatally diagnosed with conditions that require surgery after birth. According to the proposed management of COVID-19 during pregnancy and puerperium in China, mothers with COVID-19 pneumonia should deliver in a negative pressure ward/operating room. It is recommended that ligation of the umbilical cord is performed early, and the cord is not squeezed. All medical staff should perform these procedures under protection including the use of personal protective equipment (*e.g.*, N95 respirators, face shields, gloves, goggles and gowns)<sup>[2]</sup> (Figure 2).





**Figure 1** Diagnosis and treatment strategies for the neonatal outpatient service and emergency room during the coronavirus disease 2019 pandemic. COVID-19: Coronavirus disease 2019.

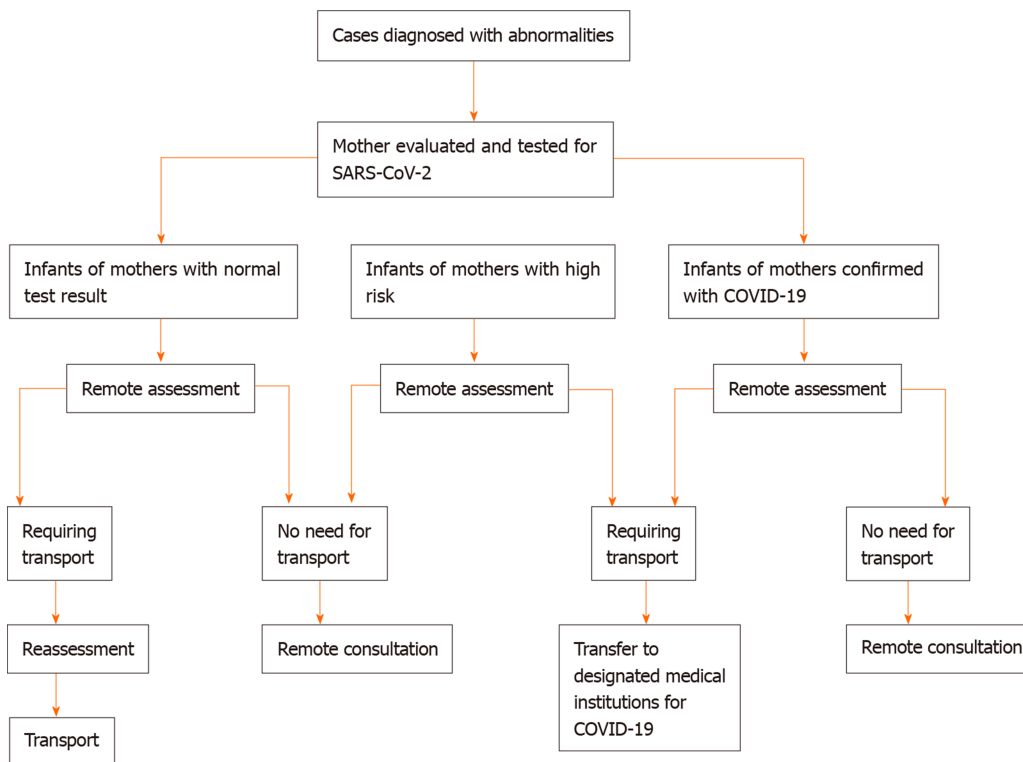
## NEONATAL SURGICAL WARD MANAGEMENT

Most of the neonatal surgical wards are nonescort wards, and it is better to temporarily cancel parent visiting during the COVID-19 outbreak. In escort wards, only one nucleic acid test-negative patient is allowed in the room. Neonatal care that requires family support such as feeding by the mother and kangaroo care should be suspended. In areas with severe outbreaks, it is suggested that receiving breast milk from outside the hospital should be canceled.

A quarantine chamber is necessary for suspected COVID-19 patients who are identified during the hospitalization period. Quarantine in negative pressure infectious disease wards or airborne infection isolation rooms is approved in principle. A ward with an independent air circulation system is acceptable when negative pressure rooms or airborne infection isolation rooms are unavailable. The babies are placed in warm boxes and cared for by designated medical staff. Infants who test positive for SARS-CoV-2 are immediately transferred to a designated medical institution and other babies in the same ward are isolated and undergo nucleic acid testing. The body temperature of all infants and medical staff in the ward is measured, and anyone who develops fever, dry cough and fatigue is isolated. The living zone in the ward should be independent of the working zone. All clinical procedures should be performed by medical personnel wearing protective equipment such as medical masks and protective hats. It is worth mentioning that hand hygiene is extremely important for the prevention of nosocomial infection.

## PREVENTION AND CONTROL STRATEGIES IN THE PERIOPERATIVE PERIOD DURING THE COVID-19 PANDEMIC

As the majority of operations in the Neonatal Surgery Department are emergency procedures and limited surgery, suspending operations completely is unrealistic. Children with emergency conditions and low risk (no exposure history or symptoms) can be treated using routine procedures. High-risk children (suspected cases) and those with confirmed COVID-19 pneumonia should be transferred to and treated in a



**Figure 2 Transportation strategies for severe and critically ill patients from the neonatal surgery department during the coronavirus disease 2019 pandemic.** COVID-19: Coronavirus disease 2019; SARS-CoV-2: Severe acute respiratory syndrome coronavirus 2.

designated hospital as suggested above. If there is not enough time for transport or the transfer service is unavailable, surgeons can perform the surgery in a negative pressure operating room in cooperation with the Department of Anesthetics (Figure 3).

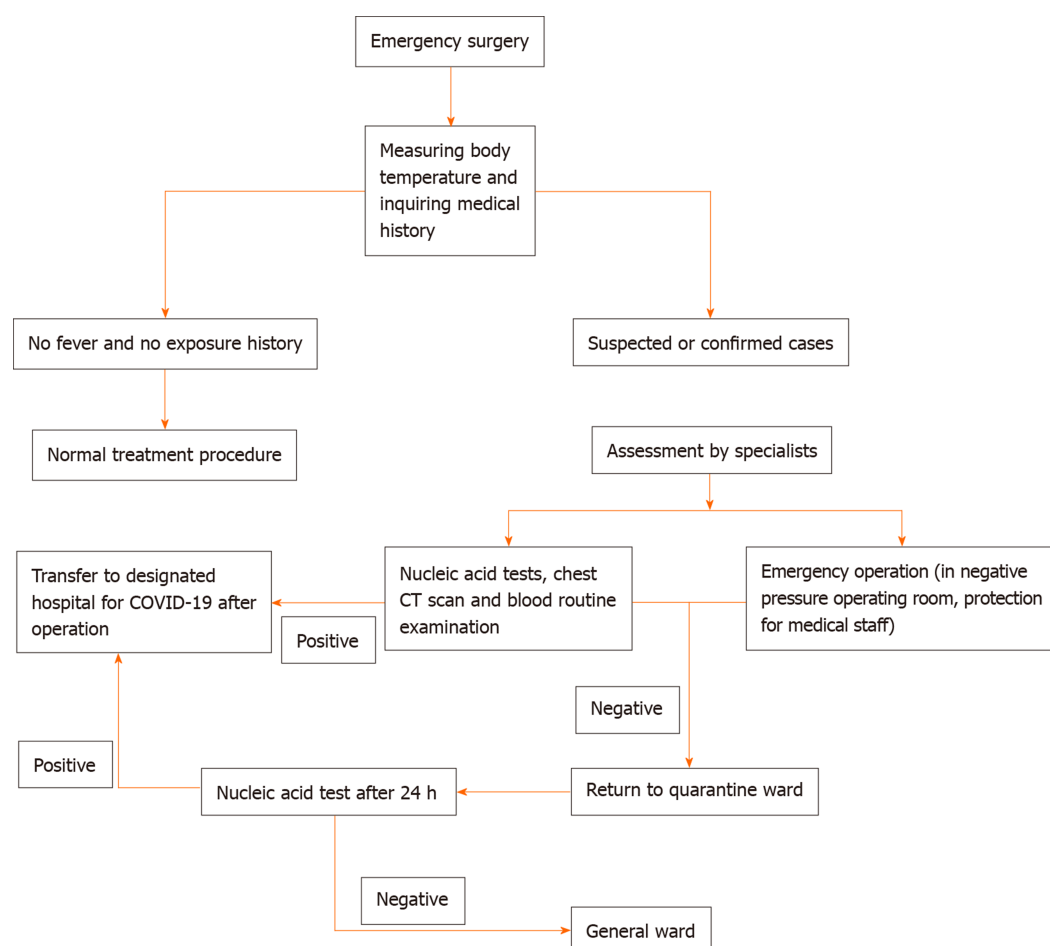
We recommend for children who require selective/limited operations that the appropriate time for the operation is decided by the surgeons in coordination with the child's guardians based on the surgeons' opinion and local COVID-19 severity.

### ***Preparation and transport before and after surgery***

Strategies for transport of patients with suspected or diagnosed SARS-CoV-2 infection should be formulated in advance. The strategies should be reviewed by an expert committee consisting of specialists in pediatric surgery, anesthesiology, pneumology, infectious disease, radiology and the operating room. Preoperative consultation needs to consider details including transport and hand over of care, surgical program, anesthesia process, organization of the operating suite, transport routes, medical staff protection and environmental disinfection.

### ***Anesthesia management in pediatric populations with suspected or diagnosed SARS-CoV-2 infection***

Anesthesiologists support most neonatal patients with endotracheal intubation following general anesthesia. Anesthesiologists performing these procedures in patients with SARS-CoV-2 infection require level 3 protection. We suggest placing a disposable filter between the anesthesia breathing circuit and the endotracheal tube in order to reduce pollution<sup>[23]</sup>. It would be better to achieve intubation by video laryngoscopy if it is available. Moderate sedation and appropriate muscle relaxation before induction are critical for minimizing virus spread through respiratory droplets from coughs. Adaptation of high frequency, small tidal volume ventilation with limited pressure models or high frequency oscillatory ventilation is necessary to avoid pulmonary barotrauma and reduce virus spread. It is highly recommended that a closed endotracheal suction system is used to clear secretions within the endotracheal tube during and after surgery. It is necessary to ensure that patients meet the criteria for returning to the quarantine ward or pediatric intensive care unit before leaving the operating room. Patients should wear masks with nasal catheter oxygen, or they can be escorted by ventilators. All drugs and devices used should be marked and stored in designated areas after disinfection.



**Figure 3 Neonatal emergency surgery procedures in the neonatal surgery department during the coronavirus disease 2019 pandemic.**  
 COVID-19: Coronavirus disease 2019; CT: Computed tomography.

### **Management of medical personnel involved in surgery**

If there are any exposure incidents during surgery, a 14 d medical monitor is recommended. Nucleic acid testing is necessary for those who develop symptoms.

## **POSTOPERATIVE MANAGEMENT OF CHILDREN**

### **Postoperative management of children with no exposure history**

Children with no exposure history or symptoms can return to the pediatric intensive care unit for further treatment, and it is suggested that parent visiting is canceled. In escort wards, only one nucleic acid test-negative patient is allowed in each room. Body temperature is measured in all infants and parents in the ward twice a day<sup>[7]</sup>. Those who develop fever, dry cough and fatigue should be isolated and undergo nucleic acid testing for SARS-CoV-2 and a chest CT scan.

### **Postoperative management of children who tested positive for SARS-CoV-2 or are highly suspected of having COVID-19**

As suggested above, children with confirmed COVID-19 pneumonia should be transferred to and treated in designated medical institutions. All daily clinical procedures should be performed by medical personnel wearing appropriate personal protective equipment.

Oxygen therapy and nebulizer therapy are recommended for patients with mild to moderate hypoxemia. For severe and critical patients with respiratory distress, high-flow nasal cannula oxygen therapy, noninvasive or invasive mechanical ventilation and even extracorporeal membrane oxygenation should be considered<sup>[2]</sup>.

Special attention should be paid to organ protection and supportive treatments as there are reports that SARS-CoV-2 may damage the liver, kidneys and myocardium to

some extent. The signs to look for are elevated levels of aminotransferases, increased serum creatinine, blood urea nitrogen, creatine kinase and myoglobin as well as troponin in critical patients<sup>[20,24,25]</sup>.

Early enteral feeding is generally preferred in ill children. Adequate protein delivery is also associated with fewer ventilator days and reduced mortality after adjusting for illness severity<sup>[26]</sup>. Enteral microbial agents can be used in selected patients.

Children, especially those receiving corticosteroids, are susceptible to secondary infections due to their incomplete immunity. In addition, those who receive mechanical ventilation are susceptible to ventilator-associated pneumonia. According to the Guideline for the diagnosis and treatment of COVID-19 infections (version 7) issued by the National Health Commission of China<sup>[1]</sup>, inappropriate and unnecessary use of antimicrobial therapy, especially an irrational combination use of broad spectrum antibiotics is not advised. The administration of empiric antimicrobial agents should be considered when bacterial pneumonia or sepsis is suspected (*e.g.*, the procalcitonin levels increase) or sputum or blood specimens show clear evidence of etiology. It is, of course, advisable to timely adjust the drug according to antimicrobial drug susceptibility test results and de-escalate or stop antibiotics if there is no evidence of bacterial infection.

According to The Coronavirus Disease 2019 (COVID-19) Treatment Guidelines published by National Institutes of Health, except in the context of a clinical trial, the COVID-19 Treatment Guidelines Panel recommends against the use of non-SARS-CoV-2-specific intravenous immunoglobulin for the treatment of COVID-19<sup>[2]</sup>.

---

## CRITERIA FOR DEREGULATING QUARANTINE AND DISCHARGE

---

According to the Guideline for the Diagnosis and Treatment of COVID-19 Infections (version 7) issued by the National Health Commission of China, the criteria for deregulating quarantine procedures are normal body temperature for more than 3 d; significant improvement in respiratory symptoms; marked absorption of acute exudative lesions on radiological images; and two consecutive negative nucleic acid test results of samples such as nasal and pharyngeal swabs and sputum with a sampling interval at least 24 h. Patients who meet all the above criteria can discharge from quarantine and then leave the hospital when they meet the discharge criteria for their own surgical conditions.

---

## SEVERAL CAVEATS NEED TO BE CONSIDERED AFTER DISCHARGE

---

These caveats include remaining in contact with the local primary medical institutions in the patient's place of residence and tracking the patient's condition. Also monitoring the health of the child for 14 d and ensuring family care is provided by one healthy person is recommended.

Mask wearing is encouraged. Hand hygiene, personal protection and disinfection of the baby's equipment after use are required. Upon discharge, we encourage the patients to revisit the hospital every 2 wk for the 1<sup>st</sup> mo for follow-up.

Considering the good prognosis of neonates during the COVID-19 pandemic, the involvement of a multidisciplinary team consisting of specialists in obstetrics, maternal-fetal medicine and pediatrics in adjusting the prevention and control strategies for antenatal, intrapartum and postpartum diagnosis, care and treatment, is highly recommended.

---

## ACKNOWLEDGEMENTS

---

We thank all members of the Chinese Society of Obstetrics and Gynecology, the Chinese Society of Pediatrics and the Chinese Neonatologist Association, Chinese Medical Association. The experts who contributed to this manuscript (in order by their contribution to this manuscript) include: Yang-Yu Zhao, Jun-Tao Liu, Xin Wang, Xue-Feng Zhang, Zhi-Chun Feng, Wei Ji and Ying Wang.

## REFERENCES

- 1 **National Health Commission of the People's Republic of China.** Guideline for the diagnosis and treatment of COVID-19 infections (version 7). 2020. Available from: <http://www.nhc.gov.cn/yzygj/s7653p/202003/46c9294a7df4cef80dc7f5912eb1989/files/ce3e6945832a438eaae415350a8ce964.pdf>
- 2 **COVID-19 Treatment Guidelines Panel.** Coronavirus Disease 2019 (COVID-19) Treatment Guidelines. National Institutes of Health. 2020. Available from: <https://www.covid19treatmentguidelines.nih.gov/>
- 3 **Chen ZM,** Fu JF, Shu Q, Chen YH, Hua CZ, Li FB, Lin R, Tang LF, Wang TL, Wang W, Wang YS, Xu WZ, Yang ZH, Ye S, Yuan TM, Zhang CM, Zhang YY. Diagnosis and treatment recommendations for pediatric respiratory infection caused by the 2019 novel coronavirus. *World J Pediatr* 2020; 1-7 [PMID: 32026148 DOI: 10.1007/s12519-020-00345-5]
- 4 **Jin YH,** Cai L, Cheng ZS, Cheng H, Deng T, Fan YP, Fang C, Huang D, Huang LQ, Huang Q, Han Y, Hu B, Hu F, Li BH, Li YR, Liang K, Lin LK, Luo LS, Ma J, Ma LL, Peng ZY, Pan YB, Pan ZY, Ren XQ, Sun HM, Wang Y, Wang YY, Weng H, Wei CJ, Wu DF, Xia J, Xiong Y, Xu HB, Yao XM, Yuan YF, Ye TS, Zhang XC, Zhang YW, Zhang YG, Zhang HM, Zhao Y, Zhao MJ, Zi H, Zeng XT, Wang YY, Wang XH; for the Zhongnan Hospital of Wuhan University Novel Coronavirus Management and Research Team, Evidence-Based Medicine Chapter of China International Exchange and Promotive Association for Medical and Health Care (CPAM). A rapid advice guideline for the diagnosis and treatment of 2019 novel coronavirus (2019-nCoV) infected pneumonia (standard version). *Mil Med Res* 2020; 7: 4 [PMID: 32029004 DOI: 10.1186/s40779-020-0233-6]
- 5 **Nicola M,** O'Neill N, Sohrabi C, Khan M, Agha M, Agha R. Evidence based management guideline for the COVID-19 pandemic - Review article. *Int J Surg* 2020; 77: 206-216 [PMID: 32289472 DOI: 10.1016/j.ijsu.2020.04.001]
- 6 **Shen K,** Yang Y, Wang T, Zhao D, Jiang Y, Jin R, Zheng Y, Xu B, Xie Z, Lin L, Shang Y, Lu X, Shu S, Bai Y, Deng J, Lu M, Ye L, Wang X, Wang Y, Gao L; China National Clinical Research Center for Respiratory Diseases; National Center for Children's Health, Beijing, China; Group of Respiriology, Chinese Pediatric Society, Chinese Medical Association; Chinese Medical Doctor Association Committee on Respiriology Pediatrics; China Medicine Education Association Committee on Pediatrics; Chinese Research Hospital Association Committee on Pediatrics; Chinese Non-government Medical Institutions Association Committee on Pediatrics; China Association of Traditional Chinese Medicine, Committee on Children's Health and Medicine Research; China News of Drug Information Association, Committee on Children's Safety Medication; Global Pediatric Pulmonology Alliance. Diagnosis, treatment, and prevention of 2019 novel coronavirus infection in children: experts' consensus statement. *World J Pediatr* 2020; 1-9 [PMID: 32034659 DOI: 10.1007/s12519-020-00343-7]
- 7 **National Children's Medical Center; Children's Hospital of Fudan University.** Recommendations for control and prevention of infections for outpatient and emergency clinics and inpatient operations of pediatric orthopedic during the epidemic period of SARS-CoV-2. *Linchuang Xiaoe Waikie Zazhi* 2020; 19: 98-103 [DOI: 10.3969/j.issn.1671-6353.2020.02.002]
- 8 **Wang L,** Shi Y, Xiao T, Fu J, Feng X, Mu D, Feng Q, Hei M, Hu X, Li Z, Lu G, Tang Z, Wang Y, Wang C, Xia S, Xu J, Yang Y, Yang J, Zeng M, Zheng J, Zhou W, Zhou X, Zhou X, Du L, Lee SK, Zhou W; Working Committee on Perinatal and Neonatal Management for the Prevention and Control of the 2019 Novel Coronavirus Infection. Chinese expert consensus on the perinatal and neonatal management for the prevention and control of the 2019 novel coronavirus infection (First edition). *Ann Transl Med* 2020; 8: 47 [PMID: 32154287 DOI: 10.21037/atm.2020.02.20]
- 9 **Zhu N,** Zhang D, Wang W, Li X, Yang B, Song J, Zhao X, Huang B, Shi W, Lu R, Niu P, Zhan F, Ma X, Wang D, Xu W, Wu G, Gao GF, Tan W; China Novel Coronavirus Investigating and Research Team. A Novel Coronavirus from Patients with Pneumonia in China, 2019. *N Engl J Med* 2020; 382: 727-733 [PMID: 31978945 DOI: 10.1056/NEJMoa2001017]
- 10 **Su S,** Wong G, Shi W, Liu J, Lai ACK, Zhou J, Liu W, Bi Y, Gao GF. Epidemiology, Genetic Recombination, and Pathogenesis of Coronaviruses. *Trends Microbiol* 2016; 24: 490-502 [PMID: 27012512 DOI: 10.1016/j.tim.2016.03.003]
- 11 **Zhang W,** Du RH, Li B, Zheng XS, Yang XL, Hu B, Wang YY, Xiao GF, Yan B, Shi ZL, Zhou P. Molecular and serological investigation of 2019-nCoV infected patients: implication of multiple shedding routes. *Emerg Microbes Infect* 2020; 9: 386-389 [PMID: 32065057 DOI: 10.1080/22221751.2020.1729071]
- 12 **Chen H,** Guo J, Wang C, Luo F, Yu X, Zhang W, Li J, Zhao D, Xu D, Gong Q, Liao J, Yang H, Hou W, Zhang Y. Clinical characteristics and intrauterine vertical transmission potential of COVID-19 infection in nine pregnant women: a retrospective review of medical records. *Lancet* 2020; 395: 809-815 [PMID: 32151335 DOI: 10.1016/s0140-6736(20)30360-3]
- 13 **Karimi-Zarchi M,** Neamatzadeh H, Dastgheib SA, Abbasi H, Mirjalili SR, Behforouz A, Ferdosian F, Bahrami R. Vertical Transmission of Coronavirus Disease 19 (COVID-19) from Infected Pregnant Mothers to Neonates: A Review. *Fetal Pediatr Pathol* 2020; 39: 246-250 [PMID: 32238084 DOI: 10.1080/15513815.2020.1747120]
- 14 **Schwartz DA.** An Analysis of 38 Pregnant Women with COVID-19, Their Newborn Infants, and Maternal-Fetal Transmission of SARS-CoV-2: Maternal Coronavirus Infections and Pregnancy Outcomes. *Arch Pathol Lab Med* 2020 [PMID: 32180426 DOI: 10.5858/arpa.2020-0901-SA]
- 15 **Zimmermann P,** Curtis N. Coronavirus Infections in Children Including COVID-19: An Overview of the Epidemiology, Clinical Features, Diagnosis, Treatment and Prevention Options in Children. *Pediatr Infect Dis J* 2020; 39: 355-368 [PMID: 32310621 DOI: 10.1097/inf.0000000000002660]
- 16 **Wei M,** Yuan J, Liu Y, Fu T, Yu X, Zhang ZJ. Novel Coronavirus Infection in Hospitalized Infants Under 1 Year of Age in China. *JAMA* 2020; 323: 1313-1314 [PMID: 32058570 DOI: 10.1001/jama.2020.2131]
- 17 **Zeng LK,** Tao XW, Yuan WH, Wang J, Liu X, Liu ZS. [First case of neonate infected with novel coronavirus pneumonia in China]. *Zhonghua Er Ke Za Zhi* 2020; 58: E009 [PMID: 32065520 DOI: 10.3760/cma.j.issn.0578-1310.2020.0009]
- 18 **Guan WJ,** Ni ZY, Hu Y, Liang WH, Ou CQ, He JX, Liu L, Shan H, Lei CL, Hui DSC, Du B, Li LJ, Zeng G,

- Yuen KY, Chen RC, Tang CL, Wang T, Chen PY, Xiang J, Li SY, Wang JL, Liang ZJ, Peng YX, Wei L, Liu Y, Hu YH, Peng P, Wang JM, Liu JY, Chen Z, Li G, Zheng ZJ, Qiu SQ, Luo J, Ye CJ, Zhu SY, Zhong NS; China Medical Treatment Expert Group for Covid-19. Clinical Characteristics of Coronavirus Disease 2019 in China. *N Engl J Med* 2020; **382**: 1708-1720 [PMID: [32109013](#) DOI: [10.1056/NEJMoa2002032](#)]
- 19 **Dong Y**, Mo X, Hu Y, Qi X, Jiang F, Jiang Z, Tong S. Epidemiology of COVID-19 Among Children in China. *Pediatrics* 2020; **145** [PMID: [32179660](#) DOI: [10.1542/peds.2020-0702](#)]
- 20 **Huang C**, Wang Y, Li X, Ren L, Zhao J, Hu Y, Zhang L, Fan G, Xu J, Gu X, Cheng Z, Yu T, Xia J, Wei Y, Wu W, Xie X, Yin W, Li H, Liu M, Xiao Y, Gao H, Guo L, Xie J, Wang G, Jiang R, Gao Z, Jin Q, Wang J, Cao B. Clinical features of patients infected with 2019 novel coronavirus in Wuhan, China. *Lancet* 2020; **395**: 497-506 [PMID: [31986264](#) DOI: [10.1016/s0140-6736\(20\)30183-5](#)]
- 21 **Shi H**, Han X, Jiang N, Cao Y, Alwalid O, Gu J, Fan Y, Zheng C. Radiological findings from 81 patients with COVID-19 pneumonia in Wuhan, China: a descriptive study. *Lancet Infect Dis* 2020; **20**: 425-434 [PMID: [32105637](#) DOI: [10.1016/s1473-3099\(20\)30086-4](#)]
- 22 **Xu X**, Yu C, Qu J, Zhang L, Jiang S, Huang D, Chen B, Zhang Z, Guan W, Ling Z, Jiang R, Hu T, Ding Y, Lin L, Gan Q, Luo L, Tang X, Liu J. Imaging and clinical features of patients with 2019 novel coronavirus SARS-CoV-2. *Eur J Nucl Med Mol Imaging* 2020; **47**: 1275-1280 [PMID: [32107577](#) DOI: [10.1007/s00259-020-04735-9](#)]
- 23 **Hu YQ**, Huang JJ, Wang JH, Tang DX, Dou JF, Cheng QJ, Wang W, Chen ZM, Fu JF, Fang XM, Shu Q. Anesthesia management in pediatric populations suspected of or diagnosed with SARS-CoV-2 infection. *Linchuang Xiaoeer Waikie Zazhi* 2020; **19**: 111-4 [DOI: [10.3969/j.issn.1671-6353.2020.02.004](#)]
- 24 **Chen N**, Zhou M, Dong X, Qu J, Gong F, Han Y, Qiu Y, Wang J, Liu Y, Wei Y, Xia J, Yu T, Zhang X, Zhang L. Epidemiological and clinical characteristics of 99 cases of 2019 novel coronavirus pneumonia in Wuhan, China: a descriptive study. *Lancet* 2020; **395**: 507-513 [PMID: [32007143](#) DOI: [10.1016/s0140-6736\(20\)30211-7](#)]
- 25 **Yang X**, Yu Y, Xu J, Shu H, Xia J, Liu H, Wu Y, Zhang L, Yu Z, Fang M, Yu T, Wang Y, Pan S, Zou X, Yuan S, Shang Y. Clinical course and outcomes of critically ill patients with SARS-CoV-2 pneumonia in Wuhan, China: a single-centered, retrospective, observational study. *Lancet Respir Med* 2020; **8**: 475-481 [PMID: [32105632](#) DOI: [10.1016/s2213-2600\(20\)30079-5](#)]
- 26 **Wong JJ**, Han WM, Sultana R, Loh TF, Lee JH. Nutrition Delivery Affects Outcomes in Pediatric Acute Respiratory Distress Syndrome. *JPEN J Parenter Enteral Nutr* 2017; **41**: 1007-1013 [PMID: [26962064](#) DOI: [10.1177/0148607116637937](#)]





Published by **Baishideng Publishing Group Inc**  
7041 Koll Center Parkway, Suite 160, Pleasanton, CA 94566, USA

**Telephone:** +1-925-3991568

**E-mail:** [bpgoffice@wjgnet.com](mailto:bpgoffice@wjgnet.com)

**Help Desk:** <https://www.f6publishing.com/helpdesk>

<https://www.wjgnet.com>

