

Name of Journal: *World Journal of Clinical Cases*

Manuscript NO: 56562

Manuscript Type: ORIGINAL ARTICLE

Observational Study

Factors related to improved American spinal injury associations grade of acute traumatic spinal cord injury

Tian C *et al.* ATSCI and present treatment condition

Ci Tian, Yang Lv, Shu Li, Dai-Dai Wang, Yi Bai, Fang Zhou, Qing-Bian Ma

Match Overview

1	Crossref 27 words Jain, Nitin B., Gregory D. Ayers, Emily N. Peterson, Mitchell B. Harris, Leslie Morse, Kevin C. O'Connor, and Eric Garsl...	1%
2	Internet 18 words crawled on 28-Jul-2020 www.semanticscholar.org	1%
3	Internet 16 words crawled on 03-May-2020 staging.mja.com.au	1%
4	Crossref 14 words Matthew B Murphy, Kathryn Moncivais, Arnold I Caplan. "Mesenchymal stem cells: environmentally responsive therapies ...	1%
5	Crossref 14 words Yun Fei Hou, Yang Lv, Fang Zhou, Yun Tian, Hong Quan Ji, Zhi Shan Zhang, Yan Guo. "Development and validation of a ...	1% >
6	Crossref 12 words Vives, Michael, Steven Garfin, and Jean-Jacques Abitbol. "Timing of Surgery Following Spinal Cord Injury", Fractures of t	1%

激活 Windows

转到“设置”以激活 Windows

Text-Only Report



Factors related to improved ASIA grade of acute traumatic spinal cc X



ALL

IMAGES

VIDEOS

1,690,000 Results

Any time ▼

[Traumatic Spinal Cord Injury: An Overview of ...](#)

<https://www.ncbi.nlm.nih.gov/pmc/articles/PMC6439316>

Mar 22, 2019 · An Overview of Primary **Injury**. SCI commonly results from a sudden, **traumatic** impact on the spine that fractures or dislocates vertebrae. The initial mechanical forces delivered to the **spinal cord** at the time of **injury** is known as primary **injury** where “displaced bone fragments, disc materials, and/or ligaments bruise or tear into the **spinal cord** tissue” (7–9).

Cited by: 70**Author:** Arsalan Alizadeh, Scott Matthew Dyck, S...**Publish Year:** 2019

[Traumatic Spinal Cord Injury: An Overview of ...](#)

<https://pubmed.ncbi.nlm.nih.gov/30967837>

Traumatic spinal cord injury (SCI) is a life changing neurological condition with substantial socioeconomic implications for patients and their care-givers. Recent advances in medical management of SCI has significantly **improved** diagnosis, stabilization, survival ...

Cited by: 70**Author:** Arsalan Alizadeh, Scott Matthew Dyck, S...**Publish Year:** 2019

[Risks factors of mechanical ventilation in acute traumatic ...](#)

<https://www.ncbi.nlm.nih.gov/pubmed/29057991>

1. **Spinal Cord**. 2018 Mar;56(3):206-211. doi: 10.1038/s41393-017-0005-7. Epub 2017 Oct 23. Risks **factors** of mechanical ventilation in **acute traumatic** cervical **spinal cord** injured patients.

Cited by: 3**Author:** Antonio Montoto-Marqués, Natalia Trillo-...**Publish Year:** 2018

PEOPLE ALSO ASK

What age do you suffer a traumatic spinal cord injury?

ALL

IMAGES

VIDEOS

1,820,000 Results

Any time ▾

The Importance of Early Surgical Decompression for Acute ...

<https://www.ncbi.nlm.nih.gov/pmc/articles/PMC6250960>

Traumatic spinal cord injury (SCI) with neurological deficit is a tragic event, causing a major burden on the individual and society. Its worldwide prevalence is approximately 750 per million and the annual incidence appears to be increasing. 1,2) Thus, not only prevention of SCI but also treatment strategies for neurological recovery are critical issues for spine surgeons, spine associations ...

Cited by: 8

Author: Dong-Yeong Lee, Young-Jin Park, Sang-You...

Publish Year: 2018

Risks factors of mechanical ventilation in acute traumatic ...

<https://www.ncbi.nlm.nih.gov/pubmed/29057991>

1. **Spinal Cord**. 2018 Mar;56(3):206-211. doi: 10.1038/s41393-017-0005-7. Epub 2017 Oct 23. Risks factors of mechanical ventilation in **acute traumatic cervical spinal cord** injured patients.

Cited by: 4

Author: Antonio Montoto-Marqués, Natalia Trillo-D...

Publish Year: 2018

Assessment and management of acute spinal cord injury ...

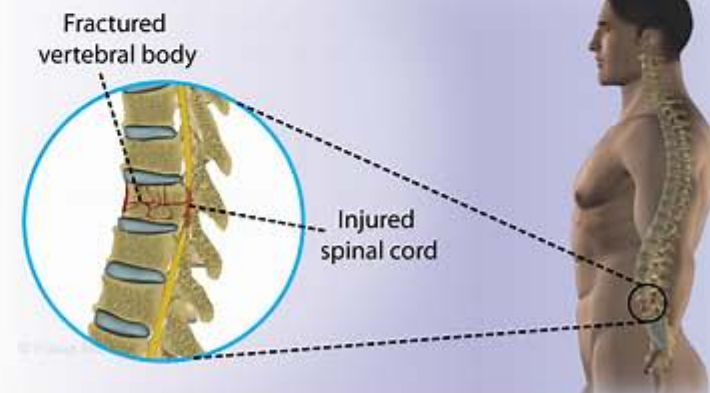
<https://www.ncbi.nlm.nih.gov/pmc/articles/PMC5778930>

Jun 01, 2017 · The Surgical Timing in **Acute Spinal Cord Injury** Study (STASCIS), 19 found that among 313

Spinal Cord Injury

Medical Condition

Spinal cord damage resulting in complete or incomplete loss of muscle function



Physical damage to the spinal cord interfering with normal motor, sensory or autonomic function.

Rare (Fewer than 200,000 cases per year in US)



182,000 Results

Any time ▾

Spinal Cord Injury Classification and Syndromes

<https://www.spineuniverse.com/conditions/spinal...>

Spinal Cord Injury Classification and Syndromes Classifying the type and grading the severity of a **traumatic** or non-**traumatic spinal cord injury** is a universal language spine specialists speak that can **improve** patient communication.

The Importance of Early Surgical Decompression for Acute ...

<https://www.ncbi.nlm.nih.gov/pmc/articles/PMC6250960>

Traumatic spinal cord injury (SCI) with neurological deficit is a tragic event, causing a major burden on the individual and society. Its worldwide prevalence is approximately 750 per million and the annual incidence appears to be increasing. 1,2) Thus, not only prevention of SCI but also treatment strategies for neurological recovery are critical issues for spine surgeons, spine **associations** ...

Cited by: 8**Author:** Dong-Yeong Lee, Young-Jin Park, Sang-...**Publish Year:** 2018

Emerging therapies for acute traumatic spinal cord injury

<https://www.ncbi.nlm.nih.gov/pmc/articles/PMC3612151>

Apr 02, 2013 · There are currently about 85 000 Canadians living with **spinal cord** injuries, more than half of which are secondary to trauma. 1 As the population ages, the incidence and prevalence of **traumatic spinal cord injury** are expected to increase, primarily as a result of fall-**related** injuries among older adults 2. Therefore, treating **spinal cord** injuries is relevant not only to spine surgeons and ...

Cited by: 133**Author:** Jefferson R. Wilson, Nicole Forgiione, Mic...**Publish Year:** 2013

Global burden of traumatic brain and spinal cord injury ...

[https://www.thelancet.com/journals/laneur/article/PIIS1474-4422\(18\)30444-7/fulltext](https://www.thelancet.com/journals/laneur/article/PIIS1474-4422(18)30444-7/fulltext)

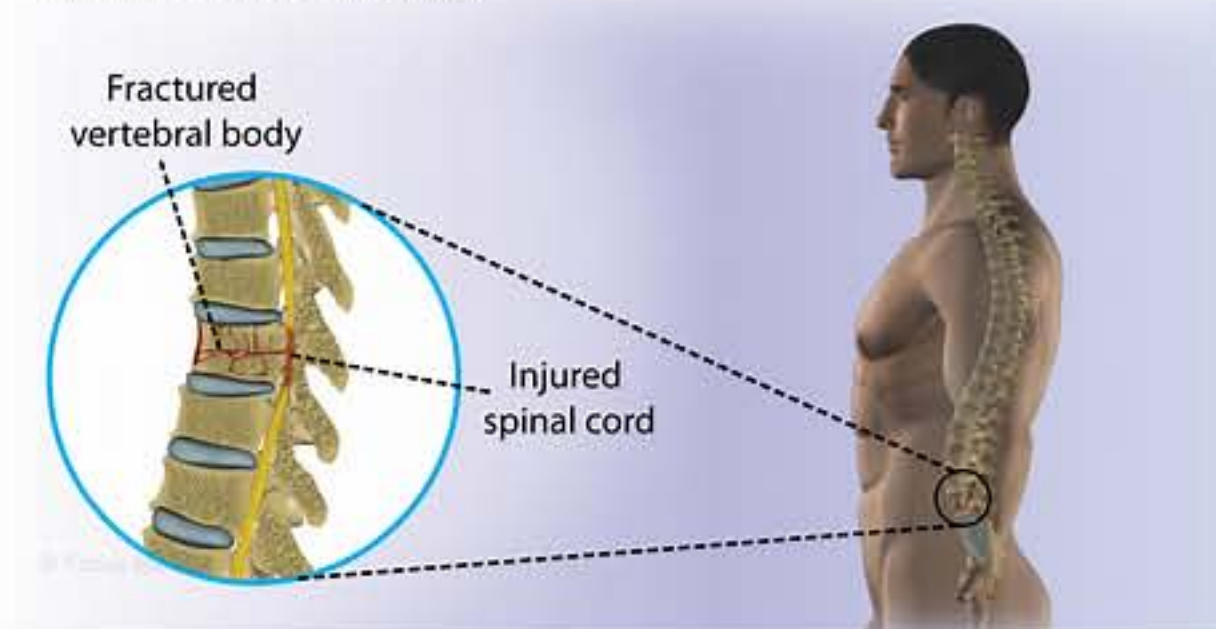
Nov 26, 2018 · **Traumatic brain injury** (TBI) and **spinal cord injury** (SCI) are devastating conditions with far-reaching physical, emotional, and economic consequences for patients, families, and society at large. In The Lancet Neurology, the Global Burden of Diseases, Injuries, and Risk **Factors** (GBD) 2016 TBI and SCI Collaborators provide a rigorous and comprehensive analysis of the global, regional, and ...

Cited by: 16**Author:** Jetan H Badhiwala, Jetan H Badhiwala, J...**Publish Year:** 2019

Spinal Cord Injury

Medical Condition

Spinal cord damage resulting in complete or incomplete loss of muscle function



Physical damage to the spinal cord interfering with normal motor, sensory or autonomic function.

Rare (Fewer than 200,000 cases per year in US)

Requires lab test or imaging

Treatments can help manage condition, no known cure

Can last several months or years

Often caused by trauma on the spinal cord. It can result in permanent motor, sensory disability. Treatment involves medications to relieve symptoms and surgery to stabilize the spine.

Symptoms

Depends on the site and severity of injury. Common symptoms include:

- Problems walking
- Weakness
- Loss of bladder or bowel control