

World Journal of *Hepatology*

World J Hepatol 2020 October 27; 12(10): 693-882



REVIEW

- 693** Neoadjuvant treatment strategies for intrahepatic cholangiocarcinoma
Akateh C, Ejaz AM, Pawlik TM, Cloyd JM
- 709** Metabolic syndrome and liver disease in the era of bariatric surgery: What you need to know!
Ziogas IA, Zapsalis K, Giannis D, Tsoulfas G
- 722** Combined liver-kidney transplantation for rare diseases
Knotek M, Novak R, Jaklin-Kelez A, Mrzljak A

MINIREVIEWS

- 738** Hepatocellular carcinoma Liver Imaging Reporting and Data Systems treatment response assessment: Lessons learned and future directions
Aslam A, Do RKG, Kambadakone A, Spieler B, Miller FH, Gabr AM, Charalel RA, Kim CY, Madoff DC, Mendiratta-Lala M
- 754** Tumor necrosis family receptor superfamily member 9/tumor necrosis factor receptor-associated factor 1 pathway on hepatitis C viral persistence and natural history
Peña-Asensio J, Sanz-de-Villalobos E, Miquel J, Larrubia JR
- 766** Apatinib as an alternative therapy for advanced hepatocellular carcinoma
Zhang XH, Cao MQ, Li XX, Zhang T

ORIGINAL ARTICLE

Basic Study

- 775** Hepatitis B virus detected in paper currencies in a densely populated city of India: A plausible source of horizontal transmission?
Das P, Supekar R, Chatterjee R, Roy S, Ghosh A, Biswas S

Case Control Study

- 792** PNPLA3 and TM6SF2 polymorphisms in Brazilian patients with nonalcoholic fatty liver disease
Lisboa QC, Nardelli MJ, Pereira PA, Miranda DM, Ribeiro SN, Costa RSN, Versiani CA, Vidigal PVT, Ferrari TCA, Couto CA

Retrospective Cohort Study

- 807** Impact of sarcopenia on mortality in patients undergoing liver re-transplantation
Dhaliwal A, Larson D, Hiat M, Muinov LM, Harrison WL, Sayles H, Sempokuya T, Olivera MA, Rochling FA, McCashland TM

Retrospective Study

- 816** Increased incidence of and microbiologic changes in pyogenic liver abscesses in the Mexican population
Pérez-Escobar J, Ramirez-Quesada W, Calle-Rodas DA, Chi-Cervera LA, Navarro-Alvarez N, Aquino-Matus J, Ramírez-Hinojosa JP, Moctezuma-Velázquez C, Torre A

Observational Study

- 829** Malnutrition and non-compliance to nutritional recommendations in patients with cirrhosis are associated with a lower survival
Crisan D, Procopet B, Epure A, Stefanescu H, Suciu A, Fodor A, Mois E, Craciun R, Crisan N
- 841** Effect of treating chronic hepatitis C with direct-acting antivirals on extrahepatic cutaneous manifestations
El Kassas M, Hegazy OM, Salah EM
- 850** Novel markers of endothelial dysfunction in hepatitis C virus-related cirrhosis: More than a mere prediction of esophageal varices
Hanafy AS, Basha MAK, Wadea FM

CASE REPORT

- 863** Kratom induced severe cholestatic liver injury histologically mimicking primary biliary cholangitis: A case report
Gandhi D, Ahuja K, Quade A, Batts KP, Patel L
- 870** Severe COVID-19 after liver transplantation, surviving the pitfalls of learning on-the-go: Three case reports
Alconchel F, Cascales-Campos PA, Pons JA, Martínez M, Valiente-Campos J, Gajownik U, Ortiz ML, Martínez-Alarcón L, Parrilla P, Robles R, Sánchez-Bueno F, Moreno S, Ramirez P

LETTER TO THE EDITOR

- 880** Role of platelet-albumin-bilirubin score in predicting re-bleeding after band ligation for acute variceal hemorrhage
Faisal MS, Singh T, Amin H, Modaresi Esfeh J

ABOUT COVER

Editorial board member of *World Journal of Hepatology*, Dr. Fernando Oscar Bessone is Professor of Gastroenterology and Chief of the Gastroenterology and Hepatology Department at the Hospital Provincial del Centenario, University of Rosario School of Medicine (Brazil). Dr. Bessone completed postgraduate training in Clinical Hepatology, Liver Pathology (Hospital de Clinicas, San Pablo, Brazil), Pediatric Hepatology (Hospital da Criança, San Pablo, Brazil), and Liver Transplantation and Clinical Hepatology (Hospital Clinic y Provincial de Barcelona, Spain). He has served as Principal Investigator or Co-Investigator in more than 50 clinical trials, and is currently the Coordinator of the Latin American Registry of Hepatotoxicity. He authored more than 70 articles, 30 book chapters, and more than 140 papers presented at scientific meetings. In addition, he serves as an editorial board member for several international hepatology-related journals. (L-Editor: Filipodia)

AIMS AND SCOPE

The primary aim of *World Journal of Hepatology* (*WJH*, *World J Hepatol*) is to provide scholars and readers from various fields of hepatology with a platform to publish high-quality basic and clinical research articles and communicate their research findings online.

WJH mainly publishes articles reporting research results and findings obtained in the field of hepatology and covering a wide range of topics including chronic cholestatic liver diseases, cirrhosis and its complications, clinical alcoholic liver disease, drug induced liver disease autoimmune, fatty liver disease, genetic and pediatric liver diseases, hepatocellular carcinoma, hepatic stellate cells and fibrosis, liver immunology, liver regeneration, hepatic surgery, liver transplantation, biliary tract pathophysiology, non-invasive markers of liver fibrosis, viral hepatitis.

INDEXING/ABSTRACTING

The *WJH* is now abstracted and indexed in PubMed, PubMed Central, Emerging Sources Citation Index (Web of Science), Scopus, China National Knowledge Infrastructure (CNKI), China Science and Technology Journal Database (CSTJ), and Superstar Journals Database.

RESPONSIBLE EDITORS FOR THIS ISSUE

Production Editor: Li-Li Wang; Production Department Director: Yun-Xiao Jian Wu; Editorial Office Director: Jia-Ping Yan.

NAME OF JOURNAL

World Journal of Hepatology

ISSN

ISSN 1948-5182 (online)

LAUNCH DATE

October 31, 2009

FREQUENCY

Monthly

EDITORS-IN-CHIEF

Nikolaos T Pylsopoulos, Ke-Qin Hu, Koo Jeong Kang

EDITORIAL BOARD MEMBERS

<https://www.wjgnet.com/1948-5182/editorialboard.htm>

PUBLICATION DATE

October 27, 2020

COPYRIGHT

© 2020 Baishideng Publishing Group Inc

INSTRUCTIONS TO AUTHORS

<https://www.wjgnet.com/bpg/gerinfo/204>

GUIDELINES FOR ETHICS DOCUMENTS

<https://www.wjgnet.com/bpg/GerInfo/287>

GUIDELINES FOR NON-NATIVE SPEAKERS OF ENGLISH

<https://www.wjgnet.com/bpg/gerinfo/240>

PUBLICATION ETHICS

<https://www.wjgnet.com/bpg/GerInfo/288>

PUBLICATION MISCONDUCT

<https://www.wjgnet.com/bpg/gerinfo/208>

ARTICLE PROCESSING CHARGE

<https://www.wjgnet.com/bpg/gerinfo/242>

STEPS FOR SUBMITTING MANUSCRIPTS

<https://www.wjgnet.com/bpg/GerInfo/239>

ONLINE SUBMISSION

<https://www.f6publishing.com>



Kratom induced severe cholestatic liver injury histologically mimicking primary biliary cholangitis: A case report

Darshan Gandhi, Kriti Ahuja, Alexis Quade, Kenneth P Batts, Love Patel

ORCID number: Darshan Gandhi 0000-0002-7079-450X; Kriti Ahuja 0000-0001-6878-919X; Alexis Quade 0000-0003-0394-8967; Kenneth P. Batts 0000-0002-2963-3843; Love Patel 0000-0002-6271-6376.

Author contributions: Gandhi D acknowledged the idea of this article and contributed to writing the manuscript substantially; Ahuja K contributed to the discussion of the manuscript; Quade A contributed to figure formation of the manuscript and its revision; Batts KP contributed to reference numbering and revision of the manuscript; Patel L conceived the idea of this article and contributed to design and revision of the manuscript; all the authors have read and approved the final revised manuscript.

Informed consent statement: Informed written consent was obtained from the patient for publication of this report and any accompanying images.

Conflict-of-interest statement: The authors declare that they have no competing or conflicts of interests.

CARE Checklist (2016) statement: The authors have read the CARE Checklist (2016), and the manuscript was prepared and revised according to the CARE Checklist (2016).

Darshan Gandhi, Department of Radiology, Northwestern Memorial Hospital, Northwestern University Feinberg School of Medicine, Chicago, IL 60611, United States

Kriti Ahuja, Department of Internal Medicine, Maulana Azad Medical College, New Delhi 110002, Delhi, India

Alexis Quade, Internal Medicine-Pediatrics, University of California-San Diego and Rady Children's Hospital San Diego, San Diego, CA 92103, United States

Kenneth P Batts, Department of Pathology, Abbott Northwestern Hospital, Allina Health, Minneapolis, MN 55407, United States

Love Patel, Division of Hospital Medicine, Abbott Northwestern Hospital, Allina Health, Minneapolis, MN 55407, United States

Corresponding author: Darshan Gandhi, MD, Academic Fellow, Doctor, Department of Radiology, Northwestern Memorial Hospital, Northwestern University Feinberg School of Medicine, 676 N St. Clair St, Suite 800, Chicago, IL 60611, United States. darshangandhi7@gmail.com

Abstract

BACKGROUND

Kratom is a psychoactive substance that is isolated from the plant *Mitragyna speciosa*. The leaves can be chewed fresh or dried, smoked, or infused similar to herbal teas. The plant leaves have been used by natives of Southeast Asia for centuries. The substance has been used for its stimulant activity at low doses, and as an opium substitute at higher doses due to a morphine like effect.

CASE SUMMARY

A 37-year-old female with a history of depression and obesity (body mass index: 32) presented to emergency room with a week-long history of nausea, decreased appetite, fatigue, and two days of jaundice. On admission bilirubin was markedly elevated. Her condition was thought to be due to consumption of Kratom 2 wk before onset of symptoms. Liver biopsy showed changes mimicking primary biliary cholangitis. Patient's symptoms and jaundice improved quickly.

CONCLUSION

The use of Kratom has been on the rise in recent years across the United States and Europe. Several case reports have associated adverse health impact of

Open-Access: This article is an open-access article that was selected by an in-house editor and fully peer-reviewed by external reviewers. It is distributed in accordance with the Creative Commons Attribution NonCommercial (CC BY-NC 4.0) license, which permits others to distribute, remix, adapt, build upon this work non-commercially, and license their derivative works on different terms, provided the original work is properly cited and the use is non-commercial. See: <http://creativecommons.org/licenses/by-nc/4.0/>

Manuscript source: Unsolicited manuscript

Received: May 21, 2020

Peer-review started: May 20, 2020

First decision: July 29, 2020

Revised: August 2, 2020

Accepted: August 26, 2020

Article in press: August 26, 2020

Published online: October 27, 2020

P-Reviewer: Jiang W, Liu J

S-Editor: Yan JP

L-Editor: A

P-Editor: Liu JH



Kratom-containing products including death due to its ability to alter levels of consciousness. Only a few case reports have highlighted the hepatotoxic effects of Kratom. Even fewer reports exist describing the detailed histopathological changes.

Key Words: Case report; Kratom; Cholestasis; Liver injury; *Mitragyna speciosa*; Cholangitis; Substance induced injury

©The Author(s) 2020. Published by Baishideng Publishing Group Inc. All rights reserved.

Core Tip: Kratom induced liver injury is an important differential diagnosis for physicians to consider in any patient presenting with acute liver injury. As observed in our patient, this manifestation of Kratom consumption may occur even at low doses. Further, this case report demonstrates that a thorough history is essential for an accurate and timely diagnosis. Patients may consider dietary and herb supplements to be natural and risk-free products, not realizing the potential for harm. In addition to asking their patients about consumption of any supplements, it is imperative that physicians update themselves so as to be able to discuss the benefits and risks, and counsel their patients effectively. Identifying use of supplements helps in early diagnosis and treatment, while also preventing future harm. From the pathology perspective, biliary changes associated with Kratom injury can mimic primary biliary cholangitis.

Citation: Gandhi D, Ahuja K, Quade A, Batts KP, Patel L. Kratom induced severe cholestatic liver injury histologically mimicking primary biliary cholangitis: A case report. *World J Hepatol* 2020; 12(10): 863-869

URL: <https://www.wjgnet.com/1948-5182/full/v12/i10/863.htm>

DOI: <https://dx.doi.org/10.4254/wjh.v12.i10.863>

INTRODUCTION

Acute liver failure is a severe condition which may rapidly become fatal^[1]. In the United States, a significant number of these cases occur due to drug-induced liver injury^[2]. Apart from prescribed medications, consumption of herbal and dietary supplements also plays an important role in causing liver injury^[2]. We present here a case of a 37-year-old female, with drug induced liver injury mimicking as antimitochondrial antibody (AMA) negative primary biliary cholangitis (PBC), secondary to consumption of an herbal supplement, Kratom. Derived from the leaves of *Mitragyna speciosa*, a plant found in Southeast Asia and Africa, this supplement is used for its stimulant properties, as a substitute for opioids, and to help opioid withdrawal symptoms^[3]. People in the United States report using this supplement predominantly for pain relief, and also report increased levels of energy and focus with consumption^[4]. Our patient learned of this herbal supplement from a friend and reported consuming it in order to boost her energy levels. Although uncommon, this herbal supplement is associated with the risk of hepatotoxicity, making it imperative for physicians to be aware of its harmful effects and caution their patients against its use^[4].

CASE PRESENTATION

Chief complaints

A 37-year-old female with a history of depression and obesity (body mass index: 32) presented to emergency room with a week-long history of nausea, decreased appetite, fatigue, and two days of jaundice.

History of present illness

Four days prior to admission, she noticed that her stools were becoming tanner and

eventually turned white. She also reported that her urine was dark. Two days prior to admission the patient noticed jaundice and scleral icterus which prompted her to seek treatment. Her only home medication was venlafaxine, which she had been taking for several years. She has no history of alcohol abuse.

On further questioning about new medications or supplement use, the patient reported using an herbal supplement containing Kratom two weeks prior to the onset of her symptoms. She used the supplement for the first time in her life. Encouraged by a friend to use the supplement to “boost energy levels,” she believed it was safe because it was “all natural”. She consumed approximately three grams in total over the course of three days in the form of powder (which she dissolved in water) and tablets. During her hospitalization, the patient’s liver enzymes continued to rise. On day 3 of her hospitalization, a liver biopsy was performed.

History of past illness

History of depression and obesity.

Physical examination

Unremarkable except jaundice.

Laboratory examinations

On admission, the patient had markedly elevated liver enzymes (Table 1). Other basic laboratory findings including blood count, basic metabolic panel, coagulation panel, serum thyroid stimulating hormone and antinuclear antibody were within normal range. Viral and autoimmune hepatitis studies were normal. Ceruloplasmin level was also normal. AMA was negative.

Imaging examinations

An abdominal ultrasound showed diffuse increased echogenicity of the liver with normal liver size and contour suggests diffuse hepatic steatosis (Figure 1). No intrahepatic or common biliary duct dilation or gall stones seen. An abdominal computed tomography scan showed similar findings. Magnetic resonance cholangiopancreatography did not demonstrate any further abnormalities.

FINAL DIAGNOSIS

Kratom induced severe liver injury histologically mimicking PBC.

TREATMENT

The patient was started on prednisone 40 mg daily. Advised to avoid any new medications or over the counter products with the potential risk of liver injury till her liver enzymes normalized.

OUTCOME AND FOLLOW-UP

The patient was discharged on day 5 of hospitalization and follow up was arranged with gastroenterology clinic. The patient had liver enzymes checked six days after discharge; her symptoms and liver enzymes showed marked improvement. Steroids were stopped. Patient was lost to further lab follow up with gastroenterology clinic but reported feeling back to her normal on follow up phone call 2-wk post hospitalization.

DISCUSSION

The herbal supplement Kratom is a psychoactive substance derived from the leaves of *Mitragyna speciosa*, a plant native to Southeast Asia^[3]. Its leaves are used for a variety of purposes, such as pain relief, enhancing energy levels, substituting opioids, managing opioid withdrawal^[3,4]. The psychoactive compounds of Kratom, mitragynine, and 7-hydroxymitragynine may also result in altered consciousness, particularly at high doses of consumption^[3]. As a result, Kratom is a controlled drug in several countries

Table 1 Patient's liver function labs from the day after admission until the day of hospital discharge

	HD1	HD2	HD3	HD4	HD5	Six days post- discharge	Normal values
Total bilirubin (mg/dL)	10.3	12.0	14.5	17.2	19.5	5.7	< 1.0
Alkaline phosphatase (U/L)	672	677	744	817	839	507	50-160
ALT (U/L)	578	585	600	608	591	323	0-30
AST (U/L)	455	461	437	401	385	101	0-40

HD: Hospital day; ALT: Alanine aminotransferase; AST: Aspartate aminotransferase.

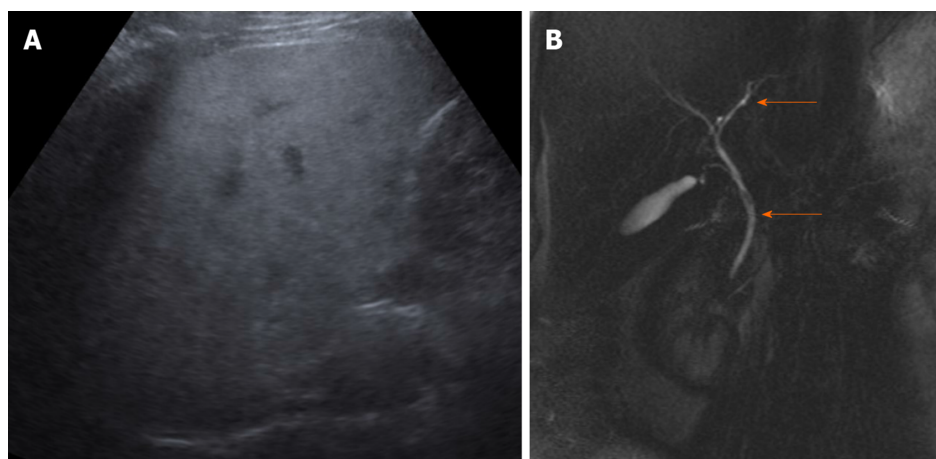


Figure 1 The abdominal ultrasound. A: Diffuse fatty infiltration of liver; B: Normal common bile duct and intrahepatic biliary ducts (orange arrows) in magnetic resonance cholangiopancreatography 3D image.

and illegal in several others^[5]. The Drug Enforcement Administration of the United States considers it a Drug and Chemical of Concern^[6]. While Kratom products are legal in most parts of the United States, a few states and cities have banned them^[4]. With concerns regarding its safety, the Food and Drug Administration warns consumers against the use of these products^[4,7].

Further, studies have shown that patients reporting Kratom use may present with confusion, lethargy, irritability, agitation, nausea and vomiting, tachycardia, hypertension or in severe cases, bradycardia, seizures, increased bilirubin, renal failure and even coma^[4]. Further, Kratom is also reported to exert effects similar to opioids, such as sedation, hypnosis, nausea, stupor and respiratory depression^[3,4,8]. In addition to this, the Food and Drug Administration has recalled Kratom supplements due to contamination with *Salmonella*^[9].

Although Kratom induced liver injury is described, reports with detailed description of histopathological changes are rare which are mentioned below in **Table 2**. Rapid clinical and liver enzyme improvement supports the diagnosis of Kratom induced liver injury.

An interesting aspect of our case is the pathological features of liver injury (**Figure 2**). The zone 3 cholestasis was felt to reflect drug effect; zone 3 cholestasis is a common finding in cholestatic drug reactions but not a feature of early stage PBC. The lymphocytic cholangitis, a typical feature of PBC and unusual medication-injury finding, raised initial concern for underlying early stage PBC. This is of lesser concern given her negative antinuclear antibody and AMA status, trend toward rapid resolution of liver enzymes, and a case report by Aldyab *et al*^[10] in 2019 that reported a case of kratom toxicity with granulomatous cholangitis (another form of florid duct lesion) that mimicked PBC. This was from a 40-year-old female presenting with liver injury after Kratom use who initially perceived to have AMA-negative PBC but diagnosed with Kratom induced liver injury after rapid normalization of liver enzymes.

In the first published case report of intrahepatic cholestasis due to consumption of Kratom, the patient's laboratory results showed a peak bilirubin of 29.3 mg/dL with prolonged elimination based on known half-life of the drug and analysis of urine

Table 2 Kratom-induced hepatotoxicity with review of literature in patients with liver biopsy

Ref.	Age, sex	Clinical findings	Form, amount, duration of Kratom consumed	Peak bilirubin (mg/dL)	Disease pattern	Radiological findings	Histological findings
Kapp <i>et al</i> ^[11]	25, M	Abdominal pain, brown urine, jaundice, pruritus	Powder, 1 to 2 teaspoon twice a day and increased to 4-6 teaspoon over 2 wk (1 teaspoon approximately 2-3 g)	Direct bilirubin 29.3	Cholestatic (increased bilirubin, AST, ALT, ALP)	USG, CT-hepatic steatosis	Cholestatic injury, no hepatocellular damage, canalicular cholestasis
Drago <i>et al</i> ^[14]	23, M	Jaundice, pale stool, brown urine for 4 d	Powder, 85 g total over 6 wk	Direct bilirubin 5.8	Cholestatic (increased bilirubin, AST, ALT, ALP)	USG, CT-normal	Cholestatic liver injury
Bernier <i>et al</i> ^[15]	41, F	Jaundice, diarrhea, pruritus	Form not available, 1 teaspoon twice daily for 1 wk	Direct bilirubin 15	Cholestatic (increased bilirubin, AST, ALT, ALP)	-	Intralobular bile duct destruction with cholestatic overload
Shah <i>et al</i> ^[16]	30, F	Abdominal pain, jaundice, dark urine, pruritus	Tea containing Kratom, dose not available	Direct bilirubin 18	Cholestatic (increased bilirubin, AST, ALT, ALP)	MRI-normal, ERCP-no bile duct obstruction	Intrahepatic cholestasis
Riverso <i>et al</i> ^[13]	38, M	Dark urine, light stools, fever	Not available	Total bilirubin 5.6	Cholestatic (increased bilirubin, AST, ALT, ALP)	USG-normal	Acute cholestatic injury, mild bile duct injury, portal inflammation
Mackenzie <i>et al</i> ^[17] and De Francesco <i>et al</i> ^[18]	27, M	Vomiting, epigastric pain, diarrhea with associated heavy alcohol intake	Powder, 3-4 teaspoon multiple times weekly for several wk	Total bilirubin 11.2	Cholestatic (increased bilirubin, AST, ALT, ALP)	-	Widespread hepatocellular necrosis with extracellular cholestasis
Fernandes <i>et al</i> ^[12]	52, M	Mild fatigue, jaundice	Crushed leaves with water, 1 teaspoon (approximately 1.5 g) once or twice a day for 2 mo	Total bilirubin 28.9	Cholestatic (increased bilirubin, ALP; slightly increased AST, ALT)	MRI - normal	Canalicular cholestasis, bile duct injury, hepatic lobule injury, mixed inflammation in portal tracts
Aldyab <i>et al</i> ^[10]	40, F	Abdominal pain, fever	Form not available, once a week for 1 mo	Total bilirubin 5.1	Mixed cholestatic and hepatocellular (increased bilirubin, AST, ALT, ALP)	CT, MRCP-mild, nonspecific periportal edema	Granulomatous duct injury
Pronesti <i>et al</i> ^[19]	30, M	Dark urine and pale stool for 1 wk, scleral icterus for 1 d	Powder with water, for 4-6 wk	Total bilirubin 5.7, direct bilirubin 4.5	Cholestatic (increased bilirubin, AST, ALT, ALP)	USG-coarse hepatic echotexture	Hepatocellular and canalicular cholestasis with inflammation and focal prominent eosinophils. No fibrosis
LiverTox case 6972 ^[20]	25, M	Abdominal pain, fever, jaundice, dark urine, pruritus	Powder, for 23 d	Total bilirubin 22.4	Mixed Hepatocellular and cholestatic (increased bilirubin, AST, ALT, ALP)	USG, CT-gall bladder wall thickening with increased perihepatic lymph nodes	Cholestatic injury with mild necrosis and inflammation

M: Male; AST: Aspartate aminotransferase; ALT: Alanine aminotransferase; ALP: Alkaline phosphatase; USG: Ultrasonography; CT: Computed tomography; F: Female; MRI: Magnetic resonance imaging; ERCP: Endoscopic retrograde cholangiopancreatography; MRCP: Magnetic resonance cholangiopancreatography.

samples^[11]. It was speculated that this could be due to the patient's underlying steatohepatitis^[11]. Similarly, our patient also had steatohepatitis observed on imaging and pathology, which could explain why even the relatively low doses of Kratom used by our patient compared to other cases discussed in the literature led to such profound liver injury.

As Kratom use appears to be on the rise in the United States, physicians need to be aware of its potential for adverse effects^[4,9]. This case highlights how even small

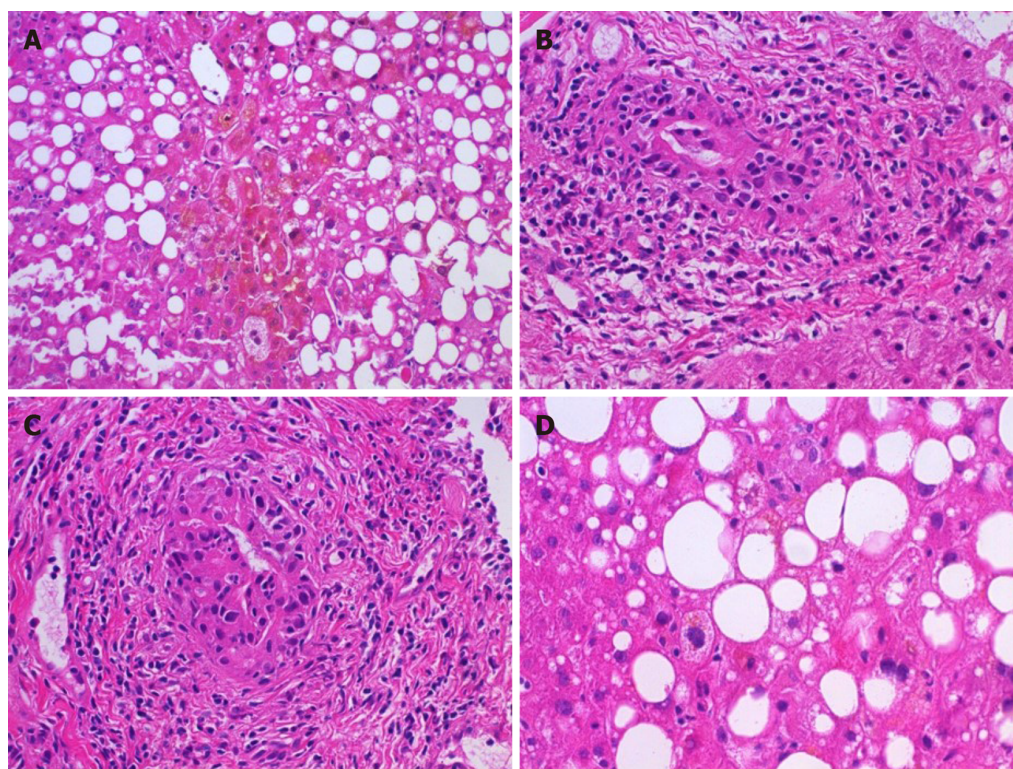


Figure 2 Histopathological findings. A: Centrilobular areas showed well defined cholestasis; B and C: Portal tracts showed moderate chronic inflammation and brisk lymphocytic-predominant bile duct injury; D: Background liver showed steatohepatitis which was felt to most likely be due to underlying obesity-related non-alcoholic fatty liver disease.

amounts of the supplement can be hepatotoxic. Physicians need to be able to discuss safety concerns of over-the-counter supplements with their patients. Moreover, the rising use of supplements and recreational substances can pose diagnostic challenges for clinicians when their use is not reported. Medical providers always need to consider the use of supplements when patients present with possible drug-induced liver injury.

CONCLUSION

Kratom induced liver injury is an important differential diagnosis for physicians to consider in any patient presenting with acute liver injury. As observed in our patient, this manifestation of Kratom consumption may occur even at low doses. Further, this case report demonstrates that a thorough history is essential for an accurate and timely diagnosis. Patients may consider dietary and herb supplements to be natural and risk-free products, not realizing the potential for harm. In addition to asking their patients about the consumption of any supplements, it is imperative that physicians update themselves so as to be able to discuss the benefits and risks and counsel their patients effectively. Identifying use of supplements helps in early diagnosis and treatment, while also preventing future harm. From the pathology perspective, biliary changes associated with Kratom injury can mimic PBC.

REFERENCES

- 1 Ostapowicz G, Fontana RJ, Schiødt FV, Larson A, Davern TJ, Han SH, McCashland TM, Shakil AO, Hay JE, Hynan L, Crippin JS, Blei AT, Samuel G, Reisch J, Lee WM; U. S. Acute Liver Failure Study Group. Results of a prospective study of acute liver failure at 17 tertiary care centers in the United States. *Ann Intern Med* 2002; **137**: 947-954 [PMID: 12484709 DOI: 10.7326/0003-4819-137-12-200212170-00007]
- 2 Chalasani N, Fontana RJ, Bonkovsky HL, Watkins PB, Davern T, Serrano J, Yang H, Rochon J; Drug Induced Liver Injury Network (DILIN). Causes, clinical features, and outcomes from a prospective study of drug-induced liver injury in the United States. *Gastroenterology* 2008; **135**: 1924-1934, 1934.e1-1934.e4 [PMID: 18955056 DOI: 10.1053/j.gastro.2008.09.011]

- 3 **Pantano F**, Tittarelli R, Mannocchi G, Zaami S, Ricci S, Giorgetti R, Terranova D, Busardò FP, Marinelli E. Hepatotoxicity Induced by "the 3Ks": Kava, Kratom and Khat. *Int J Mol Sci* 2016; **17**: 580 [PMID: 27092496 DOI: 10.3390/ijms17040580]
- 4 **Veltri C**, Grundmann O. Current perspectives on the impact of Kratom use. *Subst Abuse Rehabil* 2019; **10**: 23-31 [PMID: 31308789 DOI: 10.2147/SAR.S164261]
- 5 **U.S. Food and Drug Administration**. FDA and Kratom. Available from: <https://www.fda.gov/news-events/public-health-focus/fda-and-kratom>
- 6 **Drug Enforcement Administration-U.S Department of Justice**. Drugs of Abuse: A DEA Resource Guide. 2017 [cited 2017 Feb 22]. Available from: https://www.dea.gov/pr/multimedia-library/publications/drug_of_abuse.pdf#page=84
- 7 **U.S. Food and Drug Administration**. FDA issues warnings to companies selling illegal, unapproved kratom drug products marketed for opioid cessation, pain treatment and other medical uses. Available from: <https://www.fda.gov/news-events/press-announcements/fda-issues-warnings-companies-selling-illegal-unapproved-kratom-drug-products-marketed-opioid>
- 8 **Prozialeck WC**, Jivan JK, Andurkar SV. Pharmacology of kratom: an emerging botanical agent with stimulant, analgesic and opioid-like effects. *J Am Osteopath Assoc* 2012; **112**: 792-799 [PMID: 23212430]
- 9 **Post S**, Spiller HA, Chounthirath T, Smith GA. Kratom exposures reported to United States poison control centers: 2011-2017. *Clin Toxicol (Phila)* 2019; **57**: 847-854 [PMID: 30786220 DOI: 10.1080/15563650.2019.1569236]
- 10 **Aldyab M**, Ells PF, Bui R, Chapman TD, Lee H. Kratom-Induced Cholestatic Liver Injury Mimicking Anti-Mitochondrial Antibody-Negative Primary Biliary Cholangitis: A Case Report and Review of Literature. *Gastroenterology Res* 2019; **12**: 211-215 [PMID: 31523332 DOI: 10.14740/gr1204]
- 11 **Kapp FG**, Maurer HH, Auwärter V, Winkelmann M, Hermanns-Clausen M. Intrahepatic cholestasis following abuse of powdered kratom (*Mitragyna speciosa*). *J Med Toxicol* 2011; **7**: 227-231 [PMID: 21528385 DOI: 10.1007/s13181-011-0155-5]
- 12 **Fernandes CT**, Iqbal U, Tighe SP, Ahmed A. Kratom-Induced Cholestatic Liver Injury and Its Conservative Management. *J Investig Med High Impact Case Rep* 2019; **7**: 2324709619836138 [PMID: 30920318 DOI: 10.1177/2324709619836138]
- 13 **Riverso M**, Chang M, Soldevila-Pico C, Lai J, Liu X. Histologic Characterization of Kratom Use-Associated Liver Injury. *Gastroenterology Res* 2018; **11**: 79-82 [PMID: 29511414 DOI: 10.14740/gr990e]
- 14 **Drago JZ**, Lane B, Kochav J, Chabner B. The Harm in Kratom. *Oncologist* 2017; **22**: 1010-1011 [PMID: 28739869 DOI: 10.1634/theoncologist.2017-0279]
- 15 **Bernier M**, Allaire M, Lelong-Boulouard V, Rouillon C, Boisselier R. Inerm. Kratom (*Mitragyna speciosa*) "phyto-toxicomania": about a case of acute hepatitis. *Fundam Clin Pharmacol* 2017; **31**: 19-211
- 16 **Shah SR**, Basit SA, Orlando FL. Kratom-induced severe intrahepatic cholestasis: a case report. *Am J Gastroenterol* 2017; **112**: S1190
- 17 **Mackenzie C**, Thompson M. Salmonella contaminated Kratom ingestion associated with fulminant hepatic failure requiring liver transplantation. *Clin Toxicol* 2018; **56**: 947
- 18 **De Francesco E**, Lougheed C, Mackenzie C. Kratom-induced acute liver failure. *Can J Hosp Pharm* 2019; **72**: 69
- 19 **Pronesti V**, Sial M, Talwar A, Aoun E. Cholestatic liver injury caused by kratom ingestion: 2426. *Am J Gastroenterol* 2019; **114**: S1344 [DOI: 10.14309/01.ajg.0000599236.45119.13]
- 20 **LiverTox**, NIH. Summary of case 6972. [cited 25 Apr 2019]. Available from: [https://livertox.niddk.nih.gov/Home/Reference Cases/kratom/6972](https://livertox.niddk.nih.gov/Home/Reference%20Cases/kratom/6972)



Published by **Baishideng Publishing Group Inc**
7041 Koll Center Parkway, Suite 160, Pleasanton, CA 94566, USA

Telephone: +1-925-3991568

E-mail: bpgoffice@wjgnet.com

Help Desk: <https://www.f6publishing.com/helpdesk>

<https://www.wjgnet.com>

