

# World Journal of *Gastroenterology*

*World J Gastroenterol* 2020 October 7; 26(37): 5534-5744



### OPINION REVIEW

- 5534** Review of inflammatory bowel disease and COVID-19  
*Sultan K, Mone A, Durbin L, Khurwaja S, Swaminath A*

### REVIEW

- 5543** Hepatitis E virus: Epidemiology, diagnosis, clinical manifestations, and treatment  
*Aslan AT, Balaban HY*
- 5561** Transjugular intrahepatic portosystemic shunt in cirrhosis: An exhaustive critical update  
*Rajesh S, George T, Philips CA, Ahamed R, Kumbar S, Mohan N, Mohanan M, Augustine P*

### MINIREVIEWS

- 5597** Calcifying fibrous tumor of the gastrointestinal tract: A clinicopathologic review and update  
*Turbiville D, Zhang X*
- 5606** Artificial intelligence technologies for the detection of colorectal lesions: The future is now  
*Attardo S, Chandrasekar VT, Spadaccini M, Maselli R, Patel HK, Desai M, Capogreco A, Badalamenti M, Galtieri PA, Pellegatta G, Fugazza A, Carrara S, Anderloni A, Occhipinti P, Hassan C, Sharma P, Repici A*
- 5617** Application of artificial intelligence in the diagnosis and treatment of hepatocellular carcinoma: A review  
*Jiménez Pérez M, Grande RG*

### ORIGINAL ARTICLE

#### Basic Study

- 5629** Antioxidant activity and hepatoprotective effect of 10 medicinal herbs on CCl<sub>4</sub>-induced liver injury in mice  
*Meng X, Tang GY, Liu PH, Zhao CJ, Liu Q, Li HB*

#### Case Control Study

- 5646** Short- and long-term outcomes associated with enhanced recovery after surgery protocol vs conventional management in patients undergoing laparoscopic gastrectomy  
*Tian YL, Cao SG, Liu XD, Li ZQ, Liu G, Zhang XQ, Sun YQ, Zhou X, Wang DS, Zhou YB*

#### Retrospective Cohort Study

- 5661** Periodontitis combined with smoking increases risk of the ulcerative colitis: A national cohort study  
*Kang EA, Chun J, Kim JH, Han K, Soh H, Park S, Hong SW, Moon JM, Lee J, Lee HJ, Park JB, Im JP, Kim JS*

**Retrospective Study**

- 5673** Preliminary experience of hybrid endoscopic submucosal dissection by duodenoscope for recurrent laterally spreading papillary lesions

*Wang ZK, Liu F, Wang Y, Wang XD, Tang P, Li W*

- 5682** *Helicobacter pylori* infection with atrophic gastritis: An independent risk factor for colorectal adenomas

*Chen QF, Zhou XD, Fang DH, Zhang EG, Lin CJ, Feng XZ, Wang N, Wu JS, Wang D, Lin WH*

**Clinical Trials Study**

- 5693** Endoscopic ultrasound-fine needle biopsies of pancreatic lesions: Prospective study of histology quality using Franseen needle

*Stathopoulos P, Pehl A, Breitling LP, Bauer C, Grote T, Gress TM, Denkert C, Denzer UW*

**Prospective Study**

- 5705** Risk prediction rule for advanced neoplasia on screening colonoscopy for average-risk individuals

*Sharara AI, El Mokahal A, Harb AH, Khalaf N, Sarkis FS, M El-Halabi M, Mansour NM, Malli A, Habib R*

**EVIDENCE-BASED MEDICINE**

- 5718** Endoscopic retrograde cholangiopancreatography in the treatment of pancreaticopleural fistula in children

*Zhang J, Gao LC, Guo S, Mei TL, Zhou J, Wang GL, Yu FH, Fang YL, Xu BP*

**CASE REPORT**

- 5731** Abernethy syndrome in Slovenian children: Five case reports and review of literature

*Peček J, Fister P, Homan M*

**ABOUT COVER**

Editorial Board of *World Journal of Gastroenterology*, Dr. Angelo Zambam de Mattos is a Professor of Medicine – Gastroenterology at the Federal University of Health Sciences of Porto Alegre (UFCSPA), where he is also a permanent faculty member of the Graduate Program in Medicine: Hepatology (the only Brazilian graduate program specialized specifically in Hepatology). His research focuses on cirrhosis and its complications, culminating in > 50 academic papers. He also carries out clinical work at Irmandade Santa Casa de Misericórdia of Porto Alegre, one of the largest hospital complexes in southern Brazil. Prof. Mattos received his Medical degree in 2005, Master's degree in 2012 and PhD in 2015, all from UFCSPA. He is a member of the Brazilian Federation of Gastroenterology, Brazilian Association of Hepatology, and Brazilian Association of Digestive Endoscopy, and he is past president of the Gastroenterology Association of Rio Grande do Sul, Brazil (2017-2018). (L-Editor: Filipodia)

**AIMS AND SCOPE**

The primary aim of *World Journal of Gastroenterology* (WJG, *World J Gastroenterol*) is to provide scholars and readers from various fields of gastroenterology and hepatology with a platform to publish high-quality basic and clinical research articles and communicate their research findings online. WJG mainly publishes articles reporting research results and findings obtained in the field of gastroenterology and hepatology and covering a wide range of topics including gastroenterology, hepatology, gastrointestinal endoscopy, gastrointestinal surgery, gastrointestinal oncology, and pediatric gastroenterology.

**INDEXING/ABSTRACTING**

The WJG is now indexed in Current Contents®/Clinical Medicine, Science Citation Index Expanded (also known as SciSearch®), Journal Citation Reports®, Index Medicus, MEDLINE, PubMed, PubMed Central, and Scopus. The 2020 edition of Journal Citation Report® cites the 2019 impact factor (IF) for WJG as 3.665; IF without journal self cites: 3.534; 5-year IF: 4.048; Ranking: 35 among 88 journals in gastroenterology and hepatology; and Quartile category: Q2.

**RESPONSIBLE EDITORS FOR THIS ISSUE**

Production Editor: Yu-Jie Ma; Production Department Director: Xiang Li; Editorial Office Director: Ze-Mao Gong.

**NAME OF JOURNAL**

*World Journal of Gastroenterology*

**ISSN**

ISSN 1007-9327 (print) ISSN 2219-2840 (online)

**LAUNCH DATE**

October 1, 1995

**FREQUENCY**

Weekly

**EDITORS-IN-CHIEF**

Andrzej S Tarnawski, Subrata Ghosh

**EDITORIAL BOARD MEMBERS**

<http://www.wjgnet.com/1007-9327/editorialboard.htm>

**PUBLICATION DATE**

October 7, 2020

**COPYRIGHT**

© 2020 Baishideng Publishing Group Inc

**INSTRUCTIONS TO AUTHORS**

<https://www.wjgnet.com/bpg/gerinfo/204>

**GUIDELINES FOR ETHICS DOCUMENTS**

<https://www.wjgnet.com/bpg/GerInfo/287>

**GUIDELINES FOR NON-NATIVE SPEAKERS OF ENGLISH**

<https://www.wjgnet.com/bpg/gerinfo/240>

**PUBLICATION ETHICS**

<https://www.wjgnet.com/bpg/GerInfo/288>

**PUBLICATION MISCONDUCT**

<https://www.wjgnet.com/bpg/gerinfo/208>

**ARTICLE PROCESSING CHARGE**

<https://www.wjgnet.com/bpg/gerinfo/242>

**STEPS FOR SUBMITTING MANUSCRIPTS**

<https://www.wjgnet.com/bpg/GerInfo/239>

**ONLINE SUBMISSION**

<https://www.f6publishing.com>

## Artificial intelligence technologies for the detection of colorectal lesions: The future is now

Simona Attardo, Viveksandeep Thoguluva Chandrasekar, Marco Spadaccini, Roberta Maselli, Harsh K Patel, Madhav Desai, Antonio Capogreco, Matteo Badalamenti, Piera Alessia Galtieri, Gaia Pellegatta, Alessandro Fugazza, Silvia Carrara, Andrea Anderloni, Pietro Occhipinti, Cesare Hassan, Prateek Sharma, Alessandro Repici

**ORCID number:** Simona Attardo 0000-0003-0232-3682; Viveksandeep Thoguluva Chandrasekar 0000-0001-5256-4113; Marco Spadaccini 0000-0003-3909-9012; Roberta Maselli 0000-0001-7291-9110; Harsh K Patel 0000-0002-9180-2150; Madhav Desai 0000-0001-8871-3627; Antonio Capogreco 0000-0002-2212-2266; Matteo Badalamenti 0000-0002-95439862; Piera Alessia Galtieri 0000-0002-3253-6972; Gaia Pellegatta 0000-0003-0235-4905; Alessandro Fugazza 0000-0003-0485-4903; Silvia Carrara 0000-0003-4206-9463; Andrea Anderloni 0000-0002-1021-0031; Pietro Occhipinti 0000-0001-7048-4600; Cesare Hassan 0000-0001-7167-1459; Prateek Sharma 0000-0003-4003-7548; Alessandro Repici 0000-0002-1621-6450.

**Author contributions:** Attardo S, Chandrasekar VT equally contributed to this work; Attardo S, Chandrasekar VT and Spadaccini M substantial contributions to conception and design of the study, acquisition of data, or analysis and interpretation of data, drafting the article; Maselli R, Patel HK, Desai M, Capogreco A, Badalamenti M, Galtieri PA, Pellegatta G, Fugazza A, Carrara S, Anderloni A, Occhipinti P, Hassan C, Sharma P and Repici A substantial contributions to

**Simona Attardo, Pietro Occhipinti**, Department of Endoscopy and Digestive Disease, AOU Maggiore della Carità, Novara 28100, Italy

**Viveksandeep Thoguluva Chandrasekar, Madhav Desai, Prateek Sharma**, Department of Gastroenterology and Hepatology, Kansas City VA Medical Center, Kansas City, MO 66045, United States

**Marco Spadaccini, Roberta Maselli, Antonio Capogreco, Matteo Badalamenti, Piera Alessia Galtieri, Gaia Pellegatta, Alessandro Fugazza, Silvia Carrara, Andrea Anderloni, Alessandro Repici**, Department of Endoscopy, Humanitas Research Hospital, Rozzano 20089, Italy

**Marco Spadaccini, Antonio Capogreco, Alessandro Repici**, Department of Biomedical Sciences, Humanitas University, Rozzano 20089, Italy

**Harsh K Patel**, Department of Internal Medicine, Ochsner Clinic Foundation, New Orleans, LA 70124, United States

**Cesare Hassan**, Endoscopy Unit, Nuovo Regina Margherita Hospital, Roma 00153, Italy

**Corresponding author:** Marco Spadaccini, MD, Doctor, Department of Endoscopy, Humanitas Research Hospital, via Manzoni 56, Rozzano 20089, Italy. [marco.spadaccini@humanitas.it](mailto:marco.spadaccini@humanitas.it)

### Abstract

Several studies have shown a significant adenoma miss rate up to 35% during screening colonoscopy, especially in patients with diminutive adenomas. The use of artificial intelligence (AI) in colonoscopy has been gaining popularity by helping endoscopists in polyp detection, with the aim to increase their adenoma detection rate (ADR) and polyp detection rate (PDR) in order to reduce the incidence of interval cancers. The efficacy of deep convolutional neural network (DCNN)-based AI system for polyp detection has been trained and tested in *ex vivo* settings such as colonoscopy still images or videos. Recent trials have evaluated the real-time efficacy of DCNN-based systems showing promising results in term of improved ADR and PDR. In this review we reported data from the preliminary *ex vivo* experiences and summarized the results of the initial randomized controlled trials.



conception and design of the study, acquisition of data, or analysis and interpretation of data, making critical revisions related to important intellectual content of the manuscript; and all authors approved the final version of the article to be published.

**Conflict-of-interest statement:** No conflict of interest.

**Open-Access:** This article is an open-access article that was selected by an in-house editor and fully peer-reviewed by external reviewers. It is distributed in accordance with the Creative Commons Attribution NonCommercial (CC BY-NC 4.0) license, which permits others to distribute, remix, adapt, build upon this work non-commercially, and license their derivative works on different terms, provided the original work is properly cited and the use is non-commercial. See: <http://creativecommons.org/licenses/by-nc/4.0/>

**Manuscript source:** Invited manuscript

**Received:** June 2, 2020

**Peer-review started:** June 2, 2020

**First decision:** June 12, 2020

**Revised:** June 30, 2020

**Accepted:** September 16, 2020

**Article in press:** September 16, 2020

**Published online:** October 7, 2020

**P-Reviewer:** Triantafyllou K, Madalinski M, Qayed E, Li X

**S-Editor:** Wang JL

**L-Editor:** A

**P-Editor:** Ma YJ



**Key Words:** Endoscopy; Colonoscopy; Screening; Surveillance; Technology; Quality; Artificial intelligence

©The Author(s) 2020. Published by Baishideng Publishing Group Inc. All rights reserved.

**Core Tip:** The use of artificial intelligence (AI) in colonoscopy has been gaining popularity in current times. At first, the efficacy of deep convolutional neural network (DCNN)-based AI system for polyp detection has been tested in *ex vivo* settings such as still images or videos from colonoscopies. Recent trials have evaluated the real-time efficacy of DCNN-based systems in improving adenoma detection rate and polyp detection rate. In this review we reported all the preliminary *ex vivo* experiences and summarized the promising results of the initial randomized controlled trials.

**Citation:** Attardo S, Chandrasekar VT, Spadaccini M, Maselli R, Patel HK, Desai M, Capogreco A, Badalamenti M, Galtieri PA, Pellegatta G, Fugazza A, Carrara S, Anderloni A, Occhipinti P, Hassan C, Sharma P, Repici A. Artificial intelligence technologies for the detection of colorectal lesions: The future is now. *World J Gastroenterol* 2020; 26(37): 5606-5616

**URL:** <https://www.wjgnet.com/1007-9327/full/v26/i37/5606.htm>

**DOI:** <https://dx.doi.org/10.3748/wjg.v26.i37.5606>

## INTRODUCTION

Colorectal cancer (CRC) remains one of the leading causes of mortality among neoplastic diseases in the world<sup>[1]</sup>. Adequate colonoscopy based CRC screening programs have proved to be the key to reduce the risk of mortality, by early diagnosis of existing CRC and detection of pre-cancerous lesions<sup>[2-4]</sup>. Nevertheless, long-term effectiveness of colonoscopy is influenced by a range of variables that make it far from a perfect tool<sup>[5]</sup>. The effectiveness of a colonoscopy mainly depends on its quality, which in turn is dependent on the skill and expertise of the endoscopist. In fact, several studies have shown a significant adenoma miss rate of 24%-35%, especially in patients with diminutive adenomas<sup>[6,7]</sup>. These data are in line with interval cancers incidence (I-CRC), defined as the percentage of cancers diagnosed after a screening program and before the intended surveillance duration, of approximately 3%-5%<sup>[8,9]</sup>.

Adenoma detection rate (ADR), defined as the proportion of patients in which at least one adenoma is detected (> 30% in men and 20% in women), along with adequate bowel preparation rate (> 85% of all colonoscopies), cecal intubation rate (> 95% in screening colonoscopies) and withdrawal time > 6 min, have been identified as quality metrics in screening and diagnostic colonoscopies, to reduce the I-CRC incidence<sup>[5,10,11]</sup>. Increase in ADR by 1% has shown to decrease the risk of incidence of CRC by 3%<sup>[9]</sup>.

Innovations such as virtual and dye-spray chromoendoscopy and add on devices may help in improving ADR, particularly in low detectors<sup>[12-14]</sup>. However, all these strategies are operator-dependent tools requiring a learning curve. Further, individual experience and preference, may influence their use and efficacy.

The development of the artificial intelligence (AI) applications in the medical field has grown in interest in the past decade. Its performance on increasing automatic polyp and adenoma detection has shown promising results in order to achieve an higher ADR<sup>[15]</sup>. The use of computer aided diagnosis (CAD) for detection and further characterization of polyps had initially been studied in *ex vivo* studies but in the last few years, with the advancement in computer aided technology and emergence of deep learning algorithms, use of AI during colonoscopy has been achieved and more studies have been undertaken<sup>[16]</sup>.

The aim of this review is to provide an overview on the progress of AI, with deep learning technologies, with experiences from initial *ex vivo* studies to real time adenoma detection from most recent studies.

## AI

AI is the result of the evolution of general software systems that provide an input and

obtain an output through an algorithm. Machine Learning is the ability of a program, to learn, after an adequate training, from data that were initially entered, in order to obtain a model that can cope with scenarios that had not specifically been instructed for.

In gastroenterology, AI could be applied to tasks and clinical concerns faced by endoscopists every day. For instance, the human eye is capable of capturing only a fixed number of frames or images per second. AI can help the endoscopist to highlight a specific region of interest which needs a closer examination for identification of polyps, or can assist with categorizing polyps as hyperplastic versus adenomatous polyp, thus eventually improving the ADR<sup>[17]</sup>.

In the endoscopic field, this innovative technology uses two principal Machine learning methods.

### **Handcrafted knowledge**

In these systems, engineers create a set of rules that describe knowledge in a well-defined field. It is, historically, the first approach to artificial intelligence that, in the 1980s, led to the development of the first Expert Systems based on an approach "If ... Then". The systems that fall into this category "reason" on a very specific problem, have no ability to learn and a poor ability to reason in conditions of uncertainty, when they do not have all the elements to make the decision. Indeed object characteristics are extracted and selected manually and are used to create a model capable of categorizing them through algorithms. With regards to the evaluation of polyps, it will record a series of fixed parameters such as shape, size and texture, alone or in combination, from polyp image datasets in order to differentiate a polyp from the normal mucosa.

### **Deep learning**

In deep learning, large artificial neural networks receive algorithms and increasing amounts of data, constantly enhancing the ability to "think" and "learn". The adjective "deep" refers to the many levels that the neural network accumulates over time, improving performance proportionally to the depth of the network. Although most of the current deep learning is performed with human supervision, the goal is the creation of neural networks that can self-train and "learn" autonomously. Similar to our biological brain which tries to formulate an answer to a question by deducing a logical hypothesis and arrive at a solution for a problem, deep learning sets neural connections in motion (exactly as the human mind does), improving its performance through continuous learning using the convolutional neural network (CNN), mathematical-computer calculation models based on the functioning of biological neural networks.

An artificial neural network receives external signals on a layer of input nodes (processing units), each of which is connected with numerous internal nodes, organized in several levels. Each node processes the received signals and transmits the result to subsequent nodes working in parallel (Figure 1). They need a system training phase that fixes the weights of individual neurons and this phase can take a long time, if the number of records and variables to be analyzed are exceptionally large. As a result, the network success significantly depends on the creator's experience<sup>[18]</sup>.

The following would be a solid example of how a deep neural network works with the visual recognition of the patterns. In polyp or adenoma detection, the neurons of the first layer could learn to recognize the edges, the neurons in the second layer could learn to recognize elementary shapes, for example the round shape created by the edges. The third layer would recognize even more complex forms as a 3D structure, the fourth would recognize further details as a granular pattern and so on.

---

## **EX VIVO STUDIES**

---

Several *ex vivo* studies on AI have been published in the past 20 years (Table 1).

In the early 2000s, Karkanis *et al*<sup>[19]</sup> developed the first algorithm based on color analysis. They chose 180 polyp sample images and then randomly analyzed 1200 polyp frames from a 5-10 s extract of 60 videos. Algorithm results were promising with a 93.6% sensitivity and 99.3% specificity for polyp, although with the limitation of long processing time and the still images<sup>[19]</sup>. To address these issues, Wang *et al*<sup>[20]</sup> introduced a new algorithm called "Polyp-Alert", that by using edge detection, succeeded in a near real-time video analysis at 10 frames per second from a sample of 43 polyp shots extrapolated randomly from 53 videos. They reported a 97.7% per-

Table 1 *Ex vivo* studies

Ref.	Country	Algorithm	Number of images/videos	Outcomes
Karkanis <i>et al</i> <sup>[19]</sup> , 2003	Greece	Hand-crafted	60 videos	Sensitivity 94%, specificity 99%
Maroulis <i>et al</i> <sup>[34]</sup> , 2003	Greece	Hand-crafted	2809 video frame	Accuracy > 95%
Jerebko <i>et al</i> <sup>[35]</sup> , 2006	United States	Hand-crafted	56 images	Sensitivity 84%
Hwang <i>et al</i> <sup>[21]</sup> , 2007	United States	Hand-crafted	8621 video frame	Per-polyp sensitivity 96%
Park <i>et al</i> <sup>[36]</sup> , 2012	United States	Hand-crafted	35 videos, > 1 million frames	AUROC 0.89
Wang <i>et al</i> <sup>[37]</sup> , 2014	United States	Hand-crafted	46 video file	Sensitivity 81,4%
Bernal <i>et al</i> <sup>[38]</sup> , 2015	Spain	Hand-crafted	612 video frame	PPV 70%
Tajbakhsh <i>et al</i> <sup>[39]</sup> , 2015	United States	Hand-crafted	19400 video frame (property), 300 video frame in CVC-ColonDB	Sensitivity on property database 48%, sensitivity in CVC-ColonDB 88%
Wang <i>et al</i> <sup>[20]</sup> , 2015	United States	Hand-crafted	53 videos	Per-polyp sensitivity 97.7%
Geetha <i>et al</i> <sup>[40]</sup> , 2016	India	Hand-crafted	Still images 703 frames	Sensitivity 95%, specificity 97%
Fernández-Esparrach <i>et al</i> <sup>[22]</sup> , 2016	Spain	Hand-crafted	25 videos	Sensitivity 70.4%, specificity 72.4%
Angermann <i>et al</i> <sup>[41]</sup> , 2017	France	Hand-crafted	18 video with 10924 frames	100% per-polyp sensitivity PPV 50%
Park <i>et al</i> <sup>[42]</sup> , 2016	United States	CNN	562 images	Sensitivity 86%, specificity 85%
Billah <i>et al</i> <sup>[43]</sup> , 2017	Bangladesh	CNN	14000 still images	Sensitivity 99%, Specificity 99%
Yu <i>et al</i> <sup>[44]</sup> , 2017	China	CNN	18 videos	Sensitivity 71%, PPV 88%
Zhang <i>et al</i> <sup>[23]</sup> , 2017	China	CNN	150 random + 30 NBI images	Sensitivity 98%, PPV 99%, AUROC 1, Accuracy 86%
Urban <i>et al</i> <sup>[25]</sup> , 2018	United States	CNN	ImageNet 1.2 mil, 53588 imges from videos	90% sensitivity
Misawa <i>et al</i> <sup>[24]</sup> , 2018	Japan	CNN	135 video clips	Per-polyp sensitivity 94%, per-frame sensitivity 90%, specificity 63.3%, accuracy 76.5%
Pogorelov <i>et al</i> <sup>[45]</sup> , 2018	Norway	CNN	1359 to 11954 frame from still images	Sensitivity 75%, specificity 94%
Yamada <i>et al</i> <sup>[46]</sup> , 2018	Japan	CNN	4840 video images	Sensitivity 97%, specificity 99%, AUROC 0.975
Zhu <i>et al</i> <sup>[47]</sup> , 2018	China	CNN	616 still images	Sensitivity 89%, 92% classification accuracy
Hassan <i>et al</i> <sup>[26]</sup> , 2019	Italy	CNN	338 videos, 1.5 milion frames	Sensitivity per lesion 99.7%
Ahmad <i>et al</i> <sup>[48]</sup> , 2019	England	CNN	24596 video frames	Sensitivity 85%, specificity 93%
Eelbode <i>et al</i> <sup>[49]</sup> , 2019	Belgium	CNN	758 frames of still imges	Sensitiviy 92%, specificity 85%
Ka-Luen Lui <i>et al</i> <sup>[50]</sup> , 2019	China	CNN	6 unedited videos	Per-polyp sensitivity 100%, per frame sensitivity 98.3%, specificity 99.7%, AUROC 0.99
Misawa <i>et al</i> <sup>[51]</sup> , 2019	Japan	CNN	64 videos	86% sensitivity
Shichijo <i>et al</i> <sup>[52]</sup> , 2019	Japan	CNN	1233 still images	Per-polyp sensitivity 100%, per-image semsitivity 99%, 76% PPV
Ozawa <i>et al</i> <sup>[53]</sup> , 2020	Japan	CNN	7077 images	92% sensitivity, 86% PPV, accuracy 83%

USA: United States of America; CNN: Convolutional neural network; PPV: Positive predictive value; AUROC: Area under the receiver operating characteristic.



polyp sensitivity making this algorithm one of the first to be able to compete with real time speed. Many others methods have been proposed such as the one focusing on elliptical shape features from Hwang *et al*<sup>[21]</sup> or the window median depth of valleys accumulation energy maps system by Fernández-Esparrach *et al*<sup>[22]</sup>, which have been able to detect a specific area of the image containing a polyp as it perceives polyps as mucosal protrusions with precise boundaries. As already pointed out, a steppingstone in the progress of AI was the advent of CNN and deep learning for CAD of polyps. The real innovation is tied to the fact that CAD systems can recognize polypoid and non-polypoid features without a continuous external input, after an initial training. In 2017, Zhang *et al*<sup>[23]</sup> devised an algorithm able to outperform expert endoscopists in polyp detection accuracy (86% *vs* 74%). They also reported a 98% sensitivity using a dataset which contained millions of naturalistic images in addition to images of polyps. Misawa *et al*<sup>[24]</sup> had trained the CNN with a dataset of 1.8 million of frames of polyps from 73 colonoscopy videos, with a total of 155 polyps. Each frame was retrospectively evaluated by two expert endoscopists before being included in the dataset. The sensitivity achieved was 90% with a specificity of 63.3% for the frame-based analysis<sup>[24]</sup>. Another interesting work was published in 2018 by Urban *et al*<sup>[25]</sup>. The group pre-trained the algorithm with a dataset of 8641 colonoscopy images from about 2000 patients achieving a 96.4% of accuracy. Moreover the authors confirmed the CNN value, empowering the polyps detection potential of any senior endoscopist. Further, they also showed the possibility to reduce the miss rate, including 11 videos with 73 polyps deliberately missed by the endoscopist because of a fast withdrawal. The CNN identified 67 of the 73 polyps with a false positive rate of 5%. Another comparison between the human brain and the AI was made by Hassan and colleagues with a new system, the GI-Genius (Medtronic)<sup>[26]</sup>. It uses a dataset of 2684 histologically confirmed neoplastic polyps manually annotated by expert endoscopists and listed in 1.5 million frames. They quantified the reaction time in polyp detection for AI and five expert endoscopists were asked to observe 338 video clips and to press a button, once a polyp was identified. The overall sensitivity per lesion was 99.7%. The AI anticipated the detection against endoscopists in 82% of cases. They concluded that this result is probably due to the variability of endoscopist expertise, a greater detection of hyperplastic polyps in the AI group and benefits of AI outweighing the limitations of human beings such as fatigue and distraction.

Data from main *ex vivo* experiences on AI systems are summarized in [Table 1](#).

## IN VIVO STUDIES

There is currently a lack of robust data on AI application in real time colonoscopy and its utility compared to *ex vivo* studies, but recently there have been more studies published. Registration data on different CAD systems are summarized in [Table 2](#).

Klare *et al*<sup>[27]</sup> published a prospective study on CAD (KoloPal) to aid with polyp detection in high definition (HD) white light endoscopy in 55 patients. Fifty-five HD-white light colonoscopies were carried out by experienced endoscopists that through a verbal signal communicated the presence of any polyp. In parallel, another independent operator observed the examination on two other screens projecting images with and without the automated polyp detection software (APDS). The system highlighted with a green ring, particular areas of interest chosen by a combination of color, structure, textures, and motion, with a delay of 50-ms. Comparing APDS and endoscopists, polyp detection rate (PDR) (50.9% *vs* 56.4%) and ADR (29.1% *vs* 30.9%) were comparable. In particular a good performance was observed for larger ( $\geq 10$  mm) and Paris morphology 0-Ip and 0-Is polyps. Smaller and flat polyp morphology had insufficient polyp detection rates by APDS. However, no polyp was detected by the APDS before detected by endoscopists, probably because of the software delay<sup>[27]</sup>.

In the last year, there have been randomized controlled trials (RCT) published on the use of AI in colonoscopy ([Table 3](#)). In 2019 the first prospective RCT on real time automatic detection system using deep neural networks was conducted in China. Wang *et al*<sup>[15]</sup> enrolled 1058 patients undergoing routine colonoscopy. They were randomly assigned to either the CAD assisted colonoscopy group or the control group. They reported a significantly higher ADR in CAD group (29.1% *vs* 20.3%), primarily due to increase in detection of diminutive adenomas without a significant difference in large adenomas. The detection of hyperplastic polyps was also significantly higher in CAD group (43.6% *vs* 34.9%), which could potentially minimize the resection of these polyps and adverse events. There was also a higher mean number of adenomas detected (0.53 *vs* 0.31) in the CAD group<sup>[15]</sup>.

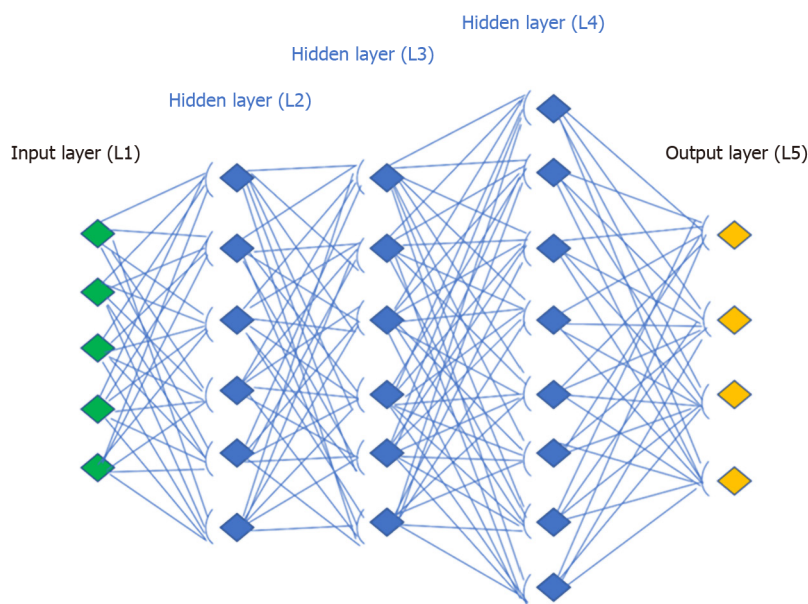
**Table 2 Artificial intelligence system country approval**

Artificial intelligence system	Country
GI-Genius (Medtronic)	European Union, Australia, Israel, South Arabia
CAD-Eye (Fuji)	European Union
Discovery (Pentax)	European Union
Endobrain-EYE (Olympus)	Japan
Wision-AI	China

**Table 3 *In vivo* randomized control trials characteristics**

Ref.	Country	CAD system	CAD system aim	Number of patients		ADR (%)	
				WL	CAD	WL	CAD
Wang <i>et al</i> <sup>[15]</sup> , 2019	China	EndoScreener	Detection	536	522	20.3	28.9
Wang <i>et al</i> <sup>[54]</sup> , 2020	China	EndoScreener	Detection	478	484	28	34.1
Gong <i>et al</i> <sup>[30]</sup> , 2020	China	ENDOANGEL	Quality	318	324	8	16
Repici <i>et al</i> <sup>[31]</sup> , 2020	Italy	GI-Genius	Detection	344	341	40.4	54.8
Liu <i>et al</i> <sup>[28]</sup> , 2020	China	Henan Xuanweitang Medical Information technology Co. Ltd.	Detection	518	508	23.9	39.2
Su <i>et al</i> <sup>[29]</sup> , 2020	China	-	Detection; quality	315	308	16.5	28.9

WL: White light (control group); CAD: Computer aided diagnosis; ADR: Adenoma detection rate.

**Figure 1 Convolutional neural network design.**

Liu *et al*<sup>[28]</sup> published their experience from China and reported that the average number of polyps detected in the CAD group were higher (0.87 *vs* 0.57,  $P < 0.001$ ). CAD group also achieved an ADR of 39% compared to 23% in the control group. The detection power was particularly improved for sessile serrated lesions and diminutive adenomas<sup>[28]</sup>. Su *et al*<sup>[29]</sup> developed an automatic quality control system (AQCS) using deep CNN and randomized 659 patients between AI and control groups. They reported significantly higher ADR, PDR, mean number of adenomas and mean number of polyps in the AQCS group<sup>[29]</sup>.

The most recent eastern RCT was by Gong *et al*<sup>[30]</sup> using another CAD technology called ENDOANGEL. Apart from its help in polyp detection, ENDOANGEL technology was also trained for recording, and possibly improving, colonoscopy quality indicators such as cecal intubation or withdrawal time by real-time signaling during the procedure<sup>[30]</sup>. They reported a significant improvement in ADR but one of the principal limitations of this study is the lack of external validity due to very low ADR rates in both groups (17% *vs* 8%, CAD *vs* control group). In countries like China where the incidence of CRC is lower<sup>[1]</sup>, it may be acceptable, but its performance in Western countries where rates are much higher these such low ADR rates would indicate a low quality colonoscopy<sup>[5]</sup>.

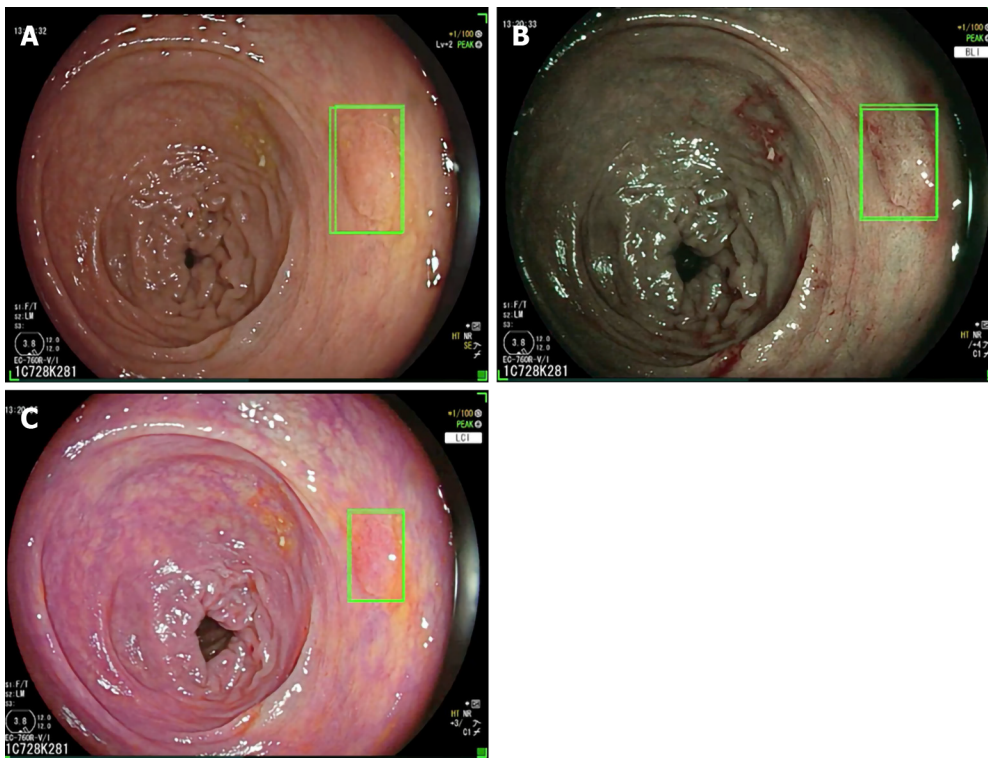
As a matter of fact Repici *et al*<sup>[31]</sup> recently investigated the role of the GI-Genius CAdE system (Figure 2) among expert endoscopists in a western-setting. The ADR of 40.4% of the control group was further increased up to 54.8% using the CAdE system. Diminutive adenomas ( $\leq 5$  mm) were detected in a significantly higher proportion of subjects in the CAdE group (33.7%) than in the control group (26.5%), as were adenomas of 6–9 mm (10.6% *vs* 5.8%), regardless of morphology or location. Based on colonoscopy videos of such a trial, the authors developed a “false positive” classification aiming to standardize future reports on this topic for a better insight on AI systems<sup>[32]</sup>.

## FUTURE NEEDS

The utility of AI has come a long way with computed assisted technology making significant strides in colonoscopy and improving the outcomes for quality metrics. Initial studies published were retrospective in nature, based primarily on feeding still images to the software. This could potentially introduce selection bias in polyp selection and hence influence the outcomes. Following these, there have been several prospective studies, designed for both polyp detection and characterization which reduce the possibility of bias and help with better interpretation of the functioning and accuracy of the CAD system. In the last year, we have had few RCTs published on this subject, mainly from China. They have shown improvement in quality metrics like ADR, withdrawal times and other outcomes like PDR, mean adenomas and polyps per person<sup>[33]</sup>. We believe that the future studies should be directed towards these goals: it is important to investigate in future studies, the utility of AI in the diagnosis and characterization of flat lesions and sessile serrated lesions which are known to have significant malignant potential. Only one of the RCTs has been performed in a multi-center setting and we need more RCTs performed in various centers across the world for generalizability and reproducibility of the results. Also several different CAD systems have been investigated including laser-induced fluorescent spectroscopy, endocytoscopy, narrow band imaging and chromoendoscopy but an ideal AI system combined with high definition white light endoscopy, aiding with polyp detection and characterization, is yet to be found and this is a work in progress currently. Moreover, the impact of false positive (futile activations) on endoscopists behave was only reported by a single experience and will deserve further insights. The impact of the ability of CAD in assisting with accurate prediction of polyp surveillance intervals also need to be investigated with longitudinal studies including follow-up data.

## CONCLUSION

Performance of a high-quality colonoscopy is essential in preventing the incidence of colorectal cancer. Significant progress has been made in the field of AI assisted colonoscopy, especially with the advent of deep CNN, which helps in overcoming the limitations of a traditional colonoscopy related to technical variations by operators and human errors. Early evidences on AI application in colonoscopy have shown it to be an effective tool in increasing efficacy in adenoma detection. RCT's investigating these



**Figure 2** GI-Genius computer aided polyp detection system in high definition white light, and virtual chromoendoscopy with blue light imaging and linked color imaging. A: High definition white light; B: Virtual chromoendoscopy with blue light imaging; C: Virtual chromoendoscopy with linked color imaging.

quality metrics have been published recently and more are in progress. However, the role of the endoscopist and in particular his abilities and experience cannot be overshadowed: (1) The detection ability of AI systems is dependent on the inspection of the mucosa exposed by the endoscopist during the scope withdrawal, and an adequate technique and the quality of bowel preparation are essential for its effective operating; and (2) The improving in detection seems to involve even hyperplastic polyps with low malignant potential and the endoscopist should be able to make a decision on which need to be resected and which do not. However, the ability of optical diagnosis is still suboptimal compared to histopathological evaluation, obtaining valid results only in specific settings<sup>[55]</sup>. Also in this field, CNN systems are being developed in order to further assist the endoscopist<sup>[56]</sup>. These would be key factors in deciding the efficacy and success of AI assistance and also play an important role with cost-benefit related outcomes in the future. Longitudinal follow-up and performance of AI in different study populations is essential in future studies to study its impact and generalizability of its use in clinical practice.

## REFERENCES

- 1 **Bray F**, Ferlay J, Soerjomataram I, Siegel RL, Torre LA, Jemal A. Global cancer statistics 2018: GLOBOCAN estimates of incidence and mortality worldwide for 36 cancers in 185 countries. *CA Cancer J Clin* 2018; **68**: 394-424 [PMID: 30207593 DOI: 10.3322/caac.21492]
- 2 **Hewitson P**, Glasziou P, Irwig L, Towler B, Watson E. Screening for colorectal cancer using the faecal occult blood test, Hemoccult. *Cochrane Database Syst Rev* 2007; CD001216 [PMID: 17253456 DOI: 10.1002/14651858]
- 3 **Doubeni CA**, Corley DA, Quinn VP, Jensen CD, Zauber AG, Goodman M, Johnson JR, Mehta SJ, Becerra TA, Zhao WK, Schottinger J, Doria-Rose VP, Levin TR, Weiss NS, Fletcher RH. Effectiveness of screening colonoscopy in reducing the risk of death from right and left colon cancer: a large community-based study. *Gut* 2018; **67**: 291-298 [PMID: 27733426 DOI: 10.1136/gutjnl-2016-312712]
- 4 **Brenner H**, Stock C, Hoffmeister M. Effect of screening sigmoidoscopy and screening colonoscopy on colorectal cancer incidence and mortality: systematic review and meta-analysis of randomised controlled trials and observational studies. *BMJ* 2014; **348**: g2467 [PMID: 24922745 DOI: 10.1136/bmj.g2467]
- 5 **Kaminski MF**, Thomas-Gibson S, Bugajski M, Bretthauer M, Rees CJ, Dekker E, Hoff G, Jover R, Suchanek S, Ferlitsch M, Anderson J, Roesch T, Hultcranz R, Racz I, Kuipers EJ, Garborg K, East JE, Rupinski M, Seip B, Bennett C, Senore C, Minozzi S, Bisschops R, Domagk D, Valori R, Spada C, Hassan



- C, Dinis-Ribeiro M, Rutter MD. Performance measures for lower gastrointestinal endoscopy: a European Society of Gastrointestinal Endoscopy (ESGE) quality improvement initiative. *United European Gastroenterol J* 2017; **5**: 309-334 [PMID: [28507745](#) DOI: [10.1177/2050640617700014](#)]
- 6 **Heresbach D**, Barrioz T, Lapalus MG, Coumaros D, Bauret P, Potier P, Sautereau D, Boustière C, Grimaud JC, Barthélémy C, Sée J, Serraj I, D'Halluin PN, Branger B, Ponchon T. Miss rate for colorectal neoplastic polyps: a prospective multicenter study of back-to-back video colonoscopies. *Endoscopy* 2008; **40**: 284-290 [PMID: [18389446](#) DOI: [10.1055/s-2007-995618](#)]
- 7 **Kim NH**, Jung YS, Jeong WS, Yang HJ, Park SK, Choi K, Park DI. Miss rate of colorectal neoplastic polyps and risk factors for missed polyps in consecutive colonoscopies. *Intest Res* 2017; **15**: 411-418 [PMID: [28670239](#) DOI: [10.5217/ir.2017.15.3.411](#)]
- 8 **Singh S**, Singh PP, Murad MH, Singh H, Samadder NJ. Prevalence, risk factors, and outcomes of interval colorectal cancers: a systematic review and meta-analysis. *Am J Gastroenterol* 2014; **109**: 1375-1389 [PMID: [24957158](#) DOI: [10.1038/ajg.2014.171](#)]
- 9 **Ertem FU**, Ladabaum U, Mehrotra A, Tehranian S, Shi Z, Saul M, Morris M, Crockett SD, Schoen RE. Incidence of interval colorectal cancer attributable to an endoscopist in clinical practice. *Gastrointest Endosc* 2018; **88**: 705-711.e1 [PMID: [29803767](#) DOI: [10.1016/j.gie.2018.05.012](#)]
- 10 **Corley DA**, Jensen CD, Marks AR, Zhao WK, Lee JK, Doubeni CA, Zauber AG, de Boer J, Fireman BH, Schottinger JE, Quinn VP, Ghai NR, Levin TR, Quesenberry CP. Adenoma detection rate and risk of colorectal cancer and death. *N Engl J Med* 2014; **370**: 1298-1306 [PMID: [24693890](#) DOI: [10.1056/NEJMoa1309086](#)]
- 11 **Spadaccini M**, Frazzoni L, Vanella G, East J, Radaelli F, Spada C, Fuccio L, Benamouzig R, Bisschops R, Bretthauer M, Dekker E, Dinis-Ribeiro M, Ferlitsch M, Gralnek I, Jover R, Kaminski MF, Pellisé M, Triantafyllou K, Van Hooft JE, Dumonceau JM, Marmo C, Alfieri S, Chandrasekar VT, Sharma P, Rex DK, Repici A, Hassan C. Efficacy and Tolerability of High- vs Low-Volume Split-Dose Bowel Cleansing Regimens for Colonoscopy: A Systematic Review and Meta-analysis. *Clin Gastroenterol Hepatol* 2020; **18**: 1454-1465.e14 [PMID: [31683057](#) DOI: [10.1016/j.cgh.2019.10.044](#)]
- 12 **Williet N**, Tournier Q, Vernet C, Dumas O, Rinaldi L, Roblin X, Phelip JM, Pioche M. Effect of Endocuff-assisted colonoscopy on adenoma detection rate: meta-analysis of randomized controlled trials. *Endoscopy* 2018; **50**: 846-860 [PMID: [29698990](#) DOI: [10.1055/a-0577-3500](#)]
- 13 **Shinozaki S**, Kobayashi Y, Hayashi Y, Sakamoto H, Sunada K, Lefor AK, Yamamoto H. Colon polyp detection using linked color imaging compared to white light imaging: Systematic review and meta-analysis. *Dig Endosc* 2020; **32**: 874-881 [PMID: [31869487](#) DOI: [10.1111/den.13613](#)]
- 14 **Shirin H**, Shpak B, Epshtein J, Karstensen JG, Hoffman A, de Ridder R, Testoni PA, Ishaq S, Reddy DN, Gross SA, Neumann H, Goetz M, Abramowich D, Moshkowitz M, Mizrahi M, Vilman P, Rey JW, Sanduleanu-Dascalescu S, Viale E, Chaudhari H, Pochapin MB, Yair M, Shnell M, Yaari S, Hendel JW, Teubner D, Bogie RMM, Notaristefano C, Simantov R, Gluck N, Israeli E, Stigaard T, Matalon S, Vilkin A, Benson A, Sloth S, Malier A, Waizbard A, Jacob H, Thielsen P, Shachar E, Rochberger S, Hershcovici T, Plougmann JJ, Braverman M, Tsvang E, Abedi AA, Brachman Y, Siersema PD, Kiesslich R. G-EYE colonoscopy is superior to standard colonoscopy for increasing adenoma detection rate: an international randomized controlled trial (with videos). *Gastrointest Endosc* 2019; **89**: 545-553 [PMID: [30273591](#) DOI: [10.1016/j.gie.2018.09.028](#)]
- 15 **Wang P**, Berzin TM, Glissen Brown JR, Bharadwaj S, Becq A, Xiao X, Liu P, Li L, Song Y, Zhang D, Li Y, Xu G, Tu M, Liu X. Real-time automatic detection system increases colonoscopic polyp and adenoma detection rates: a prospective randomised controlled study. *Gut* 2019; **68**: 1813-1819 [PMID: [30814121](#) DOI: [10.1136/gutjnl-2018-317500](#)]
- 16 **Hoerter N**, Gross SA, Liang PS. Artificial Intelligence and Polyp Detection. *Curr Treat Options Gastroenterol* 2020 [PMID: [31960282](#) DOI: [10.1007/s11938-020-00274-2](#)]
- 17 **Ebigbo A**, Palm C, Probst A, Mendel R, Manzeneder J, Prinz F, de Souza LA, Papa JP, Siersema P, Messmann H. A technical review of artificial intelligence as applied to gastrointestinal endoscopy: clarifying the terminology. *Endosc Int Open* 2019; **7**: E1616-E1623 [PMID: [31788542](#) DOI: [10.1055/a-1010-5705](#)]
- 18 **Min JK**, Kwak MS, Cha JM. Overview of Deep Learning in Gastrointestinal Endoscopy. *Gut Liver* 2019; **13**: 388-393 [PMID: [30630221](#) DOI: [10.5009/gnl18384](#)]
- 19 **Karkanis SA**, Iakovidis DK, Maroulis DE, Karras DA, Tzivras M. Computer-aided tumor detection in endoscopic video using color wavelet features. *IEEE Trans Inf Technol Biomed* 2003; **7**: 141-152 [PMID: [14518727](#) DOI: [10.1109/TITB.2003.813794](#)]
- 20 **Martínez Borellas MR**, Chaure López I, Inarejos García M, Ortiz Berroeta I, Villanueva López C. [Continuing education. 41. Subject: pediatric nursing. Topic: How to care for the nursing infant?]. *Rev Enferm* 1989; **12**: 80-82 [PMID: [2595207](#) DOI: [10.1016/j.cmpb.2015.04.002](#)]
- 21 **Hwang S**, Oh J, Tavanapong W, Wong J, De Groen J, De Groen PC. Polyp detection in colonoscopy video using elliptical shape features. In: IEEE International Conference on Image Processing; 2007 Sep 16-Oct 19; San Antonio, USA. IEEE, 2007 [DOI: [10.1109/ICIP.2007.4379193](#)]
- 22 **Fernández-Esparrach G**, Bernal J, López-Cerón M, Córdova H, Sánchez-Montes C, Rodríguez de Miguel C, Sánchez FJ. Exploring the clinical potential of an automatic colonic polyp detection method based on the creation of energy maps. *Endoscopy* 2016; **48**: 837-842 [PMID: [27285900](#) DOI: [10.1055/s-0042-108434](#)]
- 23 **Zhang R**, Zheng Y, Mak TW, Yu R, Wong SH, Lau JY, Poon CC. Automatic Detection and Classification of Colorectal Polyps by Transferring Low-Level CNN Features From Nonmedical Domain. *IEEE J Biomed Health Inform* 2017; **21**: 41-47 [PMID: [28114040](#) DOI: [10.1109/JBHI.2016.2635662](#)]
- 24 **Misawa M**, Kudo SE, Mori Y, Cho T, Kataoka S, Yamauchi A, Ogawa Y, Maeda Y, Takeda K, Ichimasa K, Nakamura H, Yagawa Y, Toyoshima N, Ogata N, Kudo T, Hisayuki T, Hayashi T, Wakamura K, Baba T, Ishida F, Itoh H, Roth H, Oda M, Mori K. Artificial Intelligence-Assisted Polyp Detection for Colonoscopy: Initial Experience. *Gastroenterology* 2018; **154**: 2027-2029.e3 [PMID: [29653147](#) DOI: [10.1053/j.gastro.2018.04.003](#)]
- 25 **Urban G**, Tripathi P, Alkayali T, Mittal M, Jalali F, Karnes W, Baldi P. Deep Learning Localizes and Identifies Polyps in Real Time With 96% Accuracy in Screening Colonoscopy. *Gastroenterology* 2018; **155**:



- 1069-1078.e8 [PMID: 29928897 DOI: 10.1053/j.gastro.2018.06.037]
- 26 **Hassan C**, Wallace MB, Sharma P, Maselli R, Craviotto V, Spadaccini M, Repici A. New artificial intelligence system: first validation study versus experienced endoscopists for colorectal polyp detection. *Gut* 2020; **69**: 799-800 [PMID: 31615835 DOI: 10.1136/gutjnl-2019-319914]
  - 27 **Klare P**, Sander C, Prinzen M, Haller B, Nowack S, Abdelhafez M, Poszler A, Brown H, Wilhelm D, Schmid RM, von Delius S, Wittenberg T. Automated polyp detection in the colorectum: a prospective study (with videos). *Gastrointest Endosc* 2019; **89**: 576-582.e1 [PMID: 30342029 DOI: 10.1016/j.gie.2018.09.042]
  - 28 **Liu WN**, Zhang YY, Bian XQ, Wang LJ, Yang Q, Zhang XD, Huang J. Study on detection rate of polyps and adenomas in artificial-intelligence-aided colonoscopy. *Saudi J Gastroenterol* 2020; **26**: 13-19 [PMID: 31898644 DOI: 10.4103/sjg.SJG\_377\_19]
  - 29 **Su JR**, Li Z, Shao XJ, Ji CR, Ji R, Zhou RC, Li GC, Liu GQ, He YS, Zuo XL, Li YQ. Impact of a real-time automatic quality control system on colorectal polyp and adenoma detection: a prospective randomized controlled study (with videos). *Gastrointest Endosc* 2020; **91**: 415-424.e4 [PMID: 31454493 DOI: 10.1016/j.gie.2019.08.026]
  - 30 **Gong D**, Wu L, Zhang J, Mu G, Shen L, Liu J, Wang Z, Zhou W, An P, Huang X, Jiang X, Li Y, Wan X, Hu S, Chen Y, Hu X, Xu Y, Zhu X, Li S, Yao L, He X, Chen D, Huang L, Wei X, Wang X, Yu H. Detection of colorectal adenomas with a real-time computer-aided system (ENDOANGEL): a randomised controlled study. *Lancet Gastroenterol Hepatol* 2020; **5**: 352-361 [PMID: 31981518 DOI: 10.1016/S2468-1253(19)30413-3]
  - 31 **Repici A**, Badalamenti M, Maselli R, Correale L, Radaelli F, Rondonotti E, Ferrara E, Spadaccini M, Alkandari A, Fugazza A, Anderloni A, Galtieri PA, Pellegatta G, Carrara S, Di Leo M, Craviotto V, Lamonaca L, Lorenzetti R, Andrealli A, Antonelli G, Wallace M, Sharma P, Rosch T, Hassan C. Efficacy of Real-Time Computer-Aided Detection of Colorectal Neoplasia in a Randomized Trial. *Gastroenterology* 2020; **159**: 512-520.e7 [PMID: 32371116 DOI: 10.1053/j.gastro.2020.04.062]
  - 32 **Hassan C**, Badalamenti M, Maselli R, Correale L, Iannone A, Radaelli F, Rondonotti E, Ferrara E, Spadaccini M, Alkandari A, Fugazza A, Anderloni A, Galtieri PA, Pellegatta G, Carrara S, Di Leo M, Craviotto V, Lamonaca L, Lorenzetti R, Andrealli A, Antonelli G, Wallace M, Sharma P, Rosch T, Repici A. Computer-aided detection-assisted colonoscopy: classification and relevance of false positives. *Gastrointest Endosc* 2020 [PMID: 32561410 DOI: 10.1016/j.gie.2020.06.021]
  - 33 **Hassan C**, Spadaccini M, Iannone A, Maselli R, Jovani M, Chandrasekar VT, Antonelli G, Yu H, Areia M, Dinis-Ribeiro M, Bhandari P, Sharma P, Rex DK, Rösch T, Wallace M, Repici A. Performance of artificial intelligence for colonoscopy regarding adenoma and polyp detection: a meta-analysis. *Gastrointest Endosc* 2020 [PMID: 32598963 DOI: 10.1016/j.gie.2020.06.059]
  - 34 **Maroulis DE**, Iakovidis DK, Karkanis SA, Karras DA. CoLD: a versatile detection system for colorectal lesions in endoscopy video-frames. *Comput Methods Programs Biomed* 2003; **70**: 151-166 [PMID: 12507791 DOI: 10.1016/S0169-2607(02)00007-X]
  - 35 **Jerebko A**, Lakare S, Cathier P, Periaswamy S, Bogoni L. Symmetric curvature patterns for colonic polyp detection. *Med Image Comput Comput Assist Interv* 2006; **9**: 169-176 [PMID: 17354769 DOI: 10.1007/11866763\_21]
  - 36 **Park SY**, Sargent D, Spofford I, Vosburgh KG, A-Rahim Y. A colon video analysis framework for polyp detection. *IEEE Trans Biomed Eng* 2012; **59**: 1408-1418 [PMID: 22361654 DOI: 10.1109/TBME.2012.2188397]
  - 37 **Wang Y**, Tavanapong W, Wong J, Oh J, de Groen PC. Part-based multiderivative edge cross-sectional profiles for polyp detection in colonoscopy. *IEEE J Biomed Health Inform* 2014; **18**: 1379-1389 [PMID: 24122609 DOI: 10.1109/JBHI.2013.2285230]
  - 38 **Bernal J**, Sánchez FJ, Fernández-Esparrach G, Gil D, Rodríguez C, Vilariño F. WM-DOVA maps for accurate polyp highlighting in colonoscopy: Validation vs. saliency maps from physicians. *Comput Med Imaging Graph* 2015; **43**: 99-111 [PMID: 25863519 DOI: 10.1016/j.compmedimag.2015.02.007]
  - 39 **Tajbakhsh N**, Gurudu SR, Liang J. Automated Polyp Detection in Colonoscopy Videos Using Shape and Context Information. *IEEE Trans Med Imaging* 2016; **35**: 630-644 [PMID: 26462083 DOI: 10.1109/TMI.2015.2487997]
  - 40 **Geetha K**, Rajan C. Automatic Colorectal Polyp Detection in Colonoscopy Video Frames. *Asian Pac J Cancer Prev* 2016; **17**: 4869-4873 [PMID: 28030914 DOI: 10.22034/APJCP.2016.17.11.4869]
  - 41 **Angermann Q**, Bernal J, Sanchez-Montes C. Towards real-time polyp detection in colonoscopy videos: adapting still frame-based methodologies for video sequences analysis. In: Cardoso MJ, Arbel T, Luo X, Wesarg S, Reichl T, González Ballester MA, McLeod J, Drechsler K, Peters T, Erdt M, Mori K, Linguraru MG, Uhl A, Oyarzun Laura C, Shekhar R, editors. Computed assisted and robotic endoscopy and clinical image-based procedures. 2017 Sep 14; Québec, Canada. Springer, 2017: 29-41 [DOI: 10.1007/978-3-319-67543-5]
  - 42 **Park SY**, Sargent D. Colonoscopic polyp detection using convolutional neural networks. In: Tourassi GD; Armato III SG, editors. Medical imaging 2016: Computer-Aided Diagnosis. International Society for Optics and Photonics, 2016: 978528
  - 43 **Billah M**, Waheed S, Rahman MM. An Automatic Gastrointestinal Polyp Detection System in Video Endoscopy Using Fusion of Color Wavelet and Convolutional Neural Network Features. *Int J Biomed Imaging* 2017; **2017**: 9545920 [PMID: 28894460 DOI: 10.1155/2017/9545920]
  - 44 **Lequan Yu**, Hao Chen, Qi Dou, Jing Qin, Pheng Ann Heng. Integrating Online and Offline Three-Dimensional Deep Learning for Automated Polyp Detection in Colonoscopy Videos. *IEEE J Biomed Health Inform* 2017; **21**: 65-75 [PMID: 28114049 DOI: 10.1109/JBHI.2016.2637004]
  - 45 **Pogorelov K**, Ostrokhova O, Jeppson M, Hespeland H, Griwodz C, de Lange T, Johansen D, Riegler M, Halvorsen P. Deep learning and hand-crafted feature based approaches for polyp detection in medical videos. In: 2018 IEEE 31st international symposium on computer-based medical system (CBMS). 2018 June 18 to 21; Karlstad Sweden. IEEE, 2018: 381-386 [DOI: 10.1109/CBMS.2018.00073]
  - 46 **Yamada M**, Saito Y, Imaoka H, Saiko M, Yamada S, Kondo H, Takamaru H, Sakamoto T, Sese J, Kuchiba A, Shibata T, Hamamoto R. Development of a real-time endoscopic image diagnosis support system using deep learning technology in colonoscopy. *Sci Rep* 2019; **9**: 14465 [PMID: 31594962 DOI: 10.1038/s41598-019-44465-4]

- 10.1038/s41598-019-50567-5]
- 47 **Zhu X**, Nemoto D, Wang Y, Guo Z, Shen Y, Aizawa M, Takayanagi D, Endo S, Hewett DG, Togasho K. Detection and diagnosis of sessile serrated adenoma/polyps using convolutional neural network (artificial intelligence). *Gastrointest Endosc* 2018; **87**: AB251 [DOI: [10.1016/j.gie.2018.04.445](https://doi.org/10.1016/j.gie.2018.04.445)]
  - 48 **Ahmad OF**, Soares AS, Mazomenos E, Brandao P, Vega R, Seward E, Stoyanov D, Chand M, Lovat LB. Artificial intelligence and computer-aided diagnosis in colonoscopy: current evidence and future directions. *Lancet Gastroenterol Hepatol* 2019; **4**: 71-80 [PMID: [30527583](https://pubmed.ncbi.nlm.nih.gov/30527583/) DOI: [10.1016/S2468-1253\(18\)30282-6](https://doi.org/10.1016/S2468-1253(18)30282-6)]
  - 49 **Eelbode T**, Hassan C, Demedts I, Roelandt P, Coron E, Bhandari P, Neumann H, Pech P, Repici A, Maes F, Bisschops R. Tu1959 BLI and LCI improve polyp detection and delineation accuracy for deep learning networks. *Gastrointest Endosc* 2019; **89**: AB632 [DOI: [10.1016/j.gie.2019.03.1103](https://doi.org/10.1016/j.gie.2019.03.1103)]
  - 50 **Ka-Luen Lui T**, Yee K, Wong K, Leung WK. 1062 Use of artificial intelligence image classifier for real-time detection of colonic polyps. *Gastrointest Endosc* 2019; **89**: AB135 [DOI: [10.1016/j.gie.2019.04.175](https://doi.org/10.1016/j.gie.2019.04.175)]
  - 51 **Misawa M**, Kudo S, Mori Y, Cho T, Kataoka S, Maeda Y, Ogawa Y, Takeda K, Nakamura H, Ichimasa K, Toyoshima N, Ogata N, Kudo T, Hisayuki T, Hayashi T, Wakamura K, Baba T, Ishida F, Itoh H, Oda M, Mori K. Tu1990 Artificial intelligence-assisted polyp detection system for colonoscopy, based on the largest available collection of clinical video data for machine learning. *Gastrointest Endosc* 2019; **89**: AB646 [DOI: [10.1016/j.gie.2019.03.1134](https://doi.org/10.1016/j.gie.2019.03.1134)]
  - 52 **Shichijo S**, Aoyama K, Ozawa T, Miura M, Fukuda H, Takeuchi Y, Takiyama Y, Hirasawa T, Onishi T, Matsuo K, Ishihara S, Ishihara R, Tada T. Tu2003 Application of convolutional neural networks could detect all laterally spreading tumor in colonoscopy images. *Gastrointest Endosc* 2019; **89**: AB653 [DOI: [10.1016/j.gie.2019.03.1147](https://doi.org/10.1016/j.gie.2019.03.1147)]
  - 53 **Ozawa T**, Ishihara S, Fujishiro M, Kumagai Y, Shichijo S, Tada T. Automated endoscopic detection and classification of colorectal polyps using convolutional neural networks. *Therap Adv Gastroenterol* 2020; **13**: 1756284820910659 [PMID: [32231710](https://pubmed.ncbi.nlm.nih.gov/32231710/) DOI: [10.1177/1756284820910659](https://doi.org/10.1177/1756284820910659)]
  - 54 **Wang P**, Liu X, Berzin TM, Glissen Brown JR, Liu P, Zhou C, Lei L, Li L, Guo Z, Lei S, Xiong F, Wang H, Song Y, Pan Y, Zhou G. Effect of a deep-learning computer-aided detection system on adenoma detection during colonoscopy (CADE-DB trial): a double-blind randomised study. *Lancet Gastroenterol Hepatol* 2020; **5**: 343-351 [PMID: [31981517](https://pubmed.ncbi.nlm.nih.gov/31981517/) DOI: [10.1016/S2468-1253\(19\)30411-X](https://doi.org/10.1016/S2468-1253(19)30411-X)]
  - 55 **ASGE Technology Committee**, Abu Dayyeh BK, Thosani N, Konda V, Wallace MB, Rex DK, Chauhan SS, Hwang JH, Komanduri S, Manfredi M, Maple JT, Murad FM, Siddiqui UD, Banerjee S. ASGE Technology Committee systematic review and meta-analysis assessing the ASGE PIVI thresholds for adopting real-time endoscopic assessment of the histology of diminutive colorectal polyps. *Gastrointest Endosc* 2015; **81**: 502.e1-502.e16 [PMID: [25597420](https://pubmed.ncbi.nlm.nih.gov/25597420/) DOI: [10.1016/j.gie.2014.12.022](https://doi.org/10.1016/j.gie.2014.12.022)]
  - 56 **Mori Y**, Kudo SE, Misawa M, Saito Y, Ikematsu H, Hotta K, Ohtsuka K, Urushibara F, Kataoka S, Ogawa Y, Maeda Y, Takeda K, Nakamura H, Ichimasa K, Kudo T, Hayashi T, Wakamura K, Ishida F, Inoue H, Itoh H, Oda M, Mori K. Real-Time Use of Artificial Intelligence in Identification of Diminutive Polyps During Colonoscopy: A Prospective Study. *Ann Intern Med* 2018; **169**: 357-366 [PMID: [30105375](https://pubmed.ncbi.nlm.nih.gov/30105375/) DOI: [10.7326/M18-0249](https://doi.org/10.7326/M18-0249)]



Published by **Baishideng Publishing Group Inc**  
7041 Koll Center Parkway, Suite 160, Pleasanton, CA 94566, USA

**Telephone:** +1-925-3991568

**E-mail:** [bpgoffice@wjgnet.com](mailto:bpgoffice@wjgnet.com)

**Help Desk:** <https://www.f6publishing.com/helpdesk>

<https://www.wjgnet.com>

