



The Spectrum of Esophageal Motility Disorders in Patients With Liver Ciri



Sign in



ALL

IMAGES

VIDEOS

330,000 Results

Any time ▾

[Esophageal motor disorders in cirrhotic patients with ...

<https://www.ncbi.nlm.nih.gov/pubmed/16444375>

RESULTS: **Esophageal motility disorders** have been found in 44 **patients** (60%). The most prevalent was the ineffective **esophageal motility**, observed in 28%. The abnormal reflux **disease** was diagnosed through the pHmetry in 35% of the **patients**.

Cited by: 3

Author: Priscila Pollo Flores, Eponina Maria de Ol...

Publish Year: 2005

[Esophageal motility studies in cirrhotic patients before ...

<https://www.ncbi.nlm.nih.gov/pubmed/16767333>

BACKGROUND: To study **esophageal motility** before and after the endoscopic variceal ligation in cirrhotic **patients**. METHODS: Twenty-four **patients** with chronic **liver disease** assisted at the "Gastrocentro - UNICAMP" in the program of endoscopic variceal ligation were studied (mean age of 49.5 years, 10 males and 5 females).

Cirrhosis of the Liver

Medical Condition



A degenerative disease of the liver resulting in scarring and liver failure.

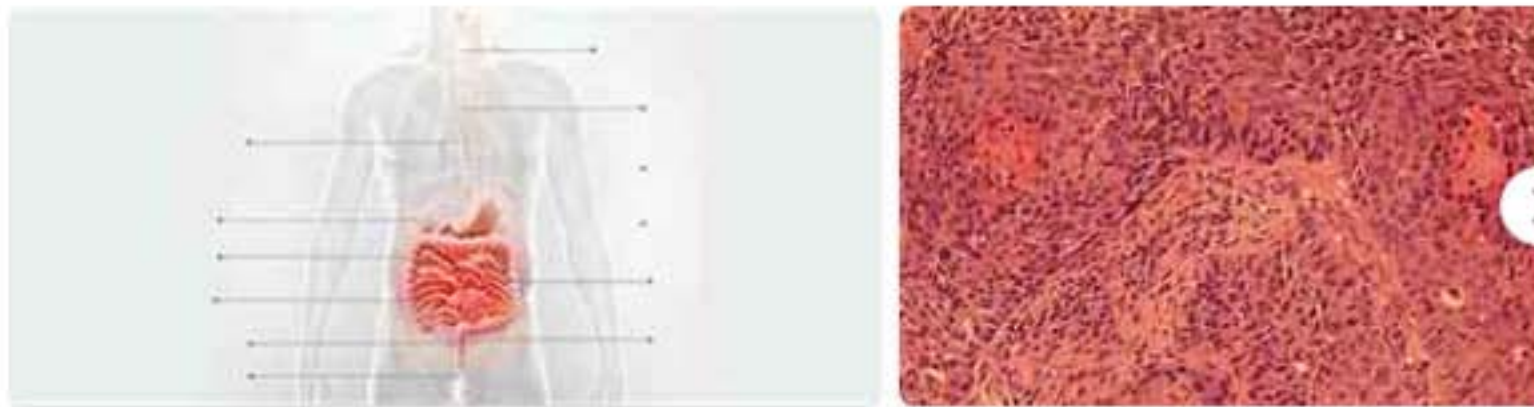
Spectrum of esophageal motility disorders in patients with liver cirrh



ALL IMAGES VIDEOS

316,000 Results Any time ▾

[Images of Spectrum of Esophageal Motility Disorders in patients ...](#)
[bing.com/images](#)



See all images >

Gastrointestinal Motility Disorders and Their Clinical ...

<https://www.ncbi.nlm.nih.gov/pmc/articles/PMC5444003>

May 11, 2017 · The pathogenesis of motility disorders in cirrhosis is not clear, but autonomic neuropathy, NO, and hormonal abnormalities have all been implicated. A study in 48 patients with cirrhosis demonstrated that autonomic neuropathy was more common in patients with delayed OCTT, compared to those with normal OCTT. **Autonomic neuropathy** was the only independent predictor of prolonged ...

Cited by: 10 Author: Eleni Theocharidou, Ameet Dhar, David Pat...

Publish Year: 2017

[Esophageal motility studies in cirrhotic patients before ...

<https://www.ncbi.nlm.nih.gov/pubmed/16767333>

BACKGROUND: To study **esophageal motility** before and after the endoscopic variceal ligation in cirrhotic patients. METHODS: Twenty-four patients with chronic liver disease assisted at the "Gastrocentro - UNICAMP" in the program of endoscopic variceal ligation were studied (mean age of ...

Cited by: 2 Author: Ana Cristina Fontenele Soares, Dráusio Jef...

Publish Year: 2006

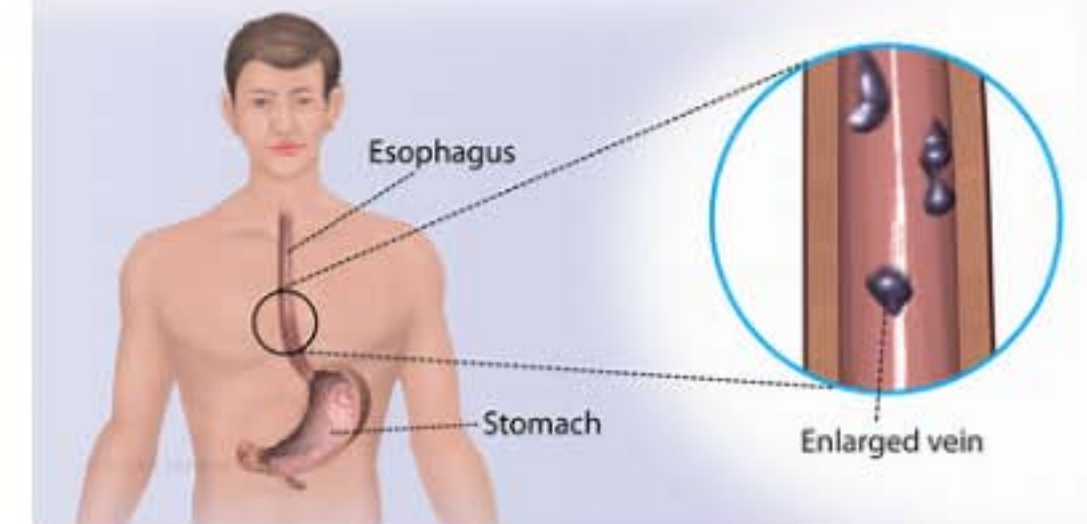
Esophageal varices - Symptoms and causes - Mayo Clinic

<https://www.mayoclinic.org/diseases-conditions/...>

Esophageal Varices

Medical Condition

Swollen veins in the lining of the lower esophagus



Abnormal, dilated veins in the food pipe.

Common (More than 200,000 cases per year in US)

Requires lab test or imaging

Treatment from medical professional advised

Can last several days or weeks

Commonly occurs when blood flow to the liver is affected due to liver disease. Esophageal varices are asymptomatic till they start to bleed. Treatment includes medications and medical procedures.

Symptoms

The condition does not show symptoms unless they bleed.

- Pain in the abdomen
- Vomiting blood
- Black, tarry stools
- Bloody stools
- Pale skin
- Dizziness/feeling faint
- Other symptoms such as jaundice may be seen as a result of an

Name of Journal: *World Journal of Hepatology*

Manuscript NO: 58663

Manuscript Type: MINIREVIEWS

Spectrum of esophageal motility disorders in patients with liver cirrhosis

Mohamed Khalaf, Donald Castell, Puja Sukhwani Elias

Abstract

Disorders of esophageal motility have been described in patients with cirrhosis in a small number of studies. In this review, we aim to provide an overview of the available evidence on esophageal motility disorders in cirrhosis and their clinical implications. This review delves into the following concepts: (1) Gastroesophageal reflux disease is common in liver cirrhosis due to many mechanisms; however, when symptomatic it is usually nocturnal and has an atypical presentation; (2) Endoscopic band ligation is

Match Overview

1	Internet 223 words crawled on 30-Aug-2020 www.hindawi.com	5%
2	Internet 178 words crawled on 13-May-2015 www.ncbi.nlm.nih.gov	4%
3	Crossref 120 words Amirali Kiyani, Shannon Ursu. "Coexistent Primary Bilia ... Cholangitis with CREST Syndrome (Reynolds Syndrom	3%
4	Crossref 95 words Robert Koch. "Cyclosporine A-induced achalasia-like eso phageal motility disorder in a liver transplant recipient: s ...	2%
5	Internet 85 words crawled on 19-Jul-2006 www.centerforaddiction.org	2%
6	Internet 57 words crawled on 06-Jul-2020 www.wjgnet.com	1%
7	Crossref 56 words Ad A.M. Masclee, Cornelis B.H.W. Lamers. "Effect of en ... oscopic sclerotherapy of esophageal varices on vagus ne	1%
8	Internet 48 words crawled on 24-Jul-2020	1%



ALL

IMAGES

VIDEOS

539,000 Results

Any time ▾

[\[Esophageal motor disorders in cirrhotic patients with ...](#)

<https://www.ncbi.nlm.nih.gov/pubmed/16444375>

RESULTS: Esophageal motility disorders have been found in 44 patients (60%). The most prevalent was the ineffective esophageal motility, observed in 28%. The abnormal reflux disease was diagnosed through the pHmetry in 35% of the patients.

Cited by: 3

Author: Priscila Pollo Flores, Eponina Maria de O...

Publish Year: 2005

[\[Esophageal motility studies in cirrhotic patients before ...](#)

<https://www.ncbi.nlm.nih.gov/pubmed/16767333>

BACKGROUND: To study esophageal motility before and after the endoscopic variceal ligation in cirrhotic patients. METHODS: Twenty-four patients with chronic liver disease assisted at the "Gastrocentro - UNICAMP" in the program of endoscopic variceal ligation were studied (mean age of 49.5 years, 19 males and 5 females).

Cited by: 2

Author: Ana Cristina Fontenele Soares, Dráusio J...

Publish Year: 2006

[Images of Spectrum of Esophageal Motility Disorders in Patie...](#)

<bing.com/images>[See all images >](#)

[Gastroesophageal reflux in cirrhotic patients without ...](#)