

World Journal of *Clinical Cases*

World J Clin Cases 2020 November 26; 8(22): 5496-5834



Contents

Semimonthly Volume 8 Number 22 November 26, 2020

EDITORIAL

- 5496 Is Dynesys dynamic stabilization system superior to posterior lumbar fusion in the treatment of lumbar degenerative diseases?

Peng BG, Gao CH

MINIREVIEWS

- 5501 COVID-19: A review of what radiologists need to know
Tang L, Wang Y, Zhang Y, Zhang XY, Zeng XC, Song B
- 5513 Holistic care model of time-sharing management for severe and critical COVID-19 patients
Yang B, Gao Y, Kang K, Li J, Wang L, Wang H, Bi Y, Dai QQ, Zhao MY, Yu KJ

ORIGINAL ARTICLE

Case Control Study

- 5518 Bioequivalence of two esomeprazole magnesium enteric-coated formulations in healthy Chinese subjects
Liu ZZ, Ren Q, Zhou YN, Yang HM
- 5529 Osteoprotegerin, interleukin and hepatocyte growth factor for prediction of diabetes and hypertension in the third trimester of pregnancy
Huang SJ, Wang HW, Wu HF, Wei QY, Luo S, Xu L, Guan HQ

Retrospective Study

- 5535 High serum lactate dehydrogenase and dyspnea: Positive predictors of adverse outcome in critical COVID-19 patients in Yichang
Ly XT, Zhu YP, Cheng AG, Jin YX, Ding HB, Wang CY, Zhang SY, Chen GP, Chen QQ, Liu QC
- 5547 Risk factors analysis of prognosis of adult acute severe myocarditis
Zhang Q, Zhao R
- 5555 Sonographic features of umbilical vein recanalization for a Rex shunt on cavernous transformation of portal vein in children
Zhang YQ, Wang Q, Wu M, Li Y, Wei XL, Zhang FX, Li Y, Shao GR, Xiao J

Clinical Trials Study

- 5564 Gemcitabine plus concurrent irreversible electroporation *vs* gemcitabine alone for locally advanced pancreatic cancer
Ma YY, Leng Y, Xing YL, Li HM, Chen JB, Niu LZ

Observational Study

- 5576** No significant association between dipeptidyl peptidase-4 inhibitors and adverse outcomes of COVID-19
Zhou JH, Wu B, Wang WX, Lei F, Cheng X, Qin JJ, Cai JJ, Zhang X, Zhou F, Liu YM, Li HM, Zhu LH, She Z, Zhang X, Yang J, Li HL

META-ANALYSIS

- 5589** Interobserver agreement for contrast-enhanced ultrasound of liver imaging reporting and data system: A systematic review and meta-analysis
Li J, Chen M, Wang ZJ, Li SG, Jiang M, Shi L, Cao CL, Sang T, Cui XW, Dietrich CF

CASE REPORT

- 5603** CLAG-M chemotherapy followed by umbilical cord blood stem cell transplantation for primary refractory acute myeloid leukaemia in a child: A case report
Huang J, Yang XY, Rong LC, Xue Y, Zhu J, Fang YJ
- 5611** Multiple schwannomas with pseudoglandular element synchronously occurring under the tongue: A case report
Chen YL, He DQ, Yang HX, Dou Y
- 5618** Primary myelofibrosis with concurrent *CALR* and *MPL* mutations: A case report
Zhou FP, Wang CC, Du HP, Cao SB, Zhang J
- 5625** Endometrial stromal sarcoma extending to the pulmonary artery: A rare case report
Fan JK, Tang GC, Yang H
- 5632** Malignant acanthosis nigricans with Leser-Trélat sign and tripe palms: A case report
Wang N, Yu PJ, Liu ZL, Zhu SM, Zhang CW
- 5639** Gastric plexiform fibromyxoma: A case report
Pei JY, Tan B, Liu P, Cao GH, Wang ZS, Qu LL
- 5645** Rectoseminal vesicle fistula after radical surgery for rectal cancer: Four case reports and a literature review
Xia ZX, Cong JC, Zhang H
- 5657** Azacitidine decreases reactive oxygen species production in peripheral white blood cells: A case report
Hasunuma H, Shimizu N, Yokota H, Tatsuno I
- 5663** Oral granuloma in a pediatric patient with chronic graft-versus-host disease: A case report
Uesugi A, Tsushima F, Kodama M, Kuroshima T, Sakurai J, Harada H
- 5670** Intrahepatic biliary cystadenoma: A case report
Xu RM, Li XR, Liu LH, Zheng WQ, Zhou H, Wang XC
- 5678** Gene diagnosis of infantile neurofibromatosis type I: A case report
Li MZ, Yuan L, Zhuo ZQ

- 5684** Localized amyloidosis affecting the lacrimal sac managed by endoscopic surgery: A case report
Song X, Yang J, Lai Y, Zhou J, Wang J, Sun X, Wang D
- 5690** Endoscopic resection of benign esophageal schwannoma: Three case reports and review of literature
Li B, Wang X, Zou WL, Yu SX, Chen Y, Xu HW
- 5701** Bouveret syndrome masquerading as a gastric mass-unmasked with endoscopic luminal laser lithotripsy: A case report
Parvataneni S, Khara HS, Diehl DL
- 5707** Nonhypertensive male with multiple paragangliomas of the heart and neck: A case report
Wang Q, Huang ZY, Ge JB, Shu XH
- 5715** Completed atrioventricular block induced by atrial septal defect occluder unfolding: A case report
He C, Zhou Y, Tang SS, Luo LH, Feng K
- 5722** Clinical characteristics of adult-type annular pancreas: A case report
Yi D, Ding XB, Dong SS, Shao C, Zhao LJ
- 5729** Port-site metastasis of unsuspected gallbladder carcinoma with ossification after laparoscopic cholecystectomy: A case report
Gao KJ, Yan ZL, Yu Y, Guo LQ, Hang C, Yang JB, Zhang MC
- 5737** Gonadal dysgenesis in Turner syndrome with Y-chromosome mosaicism: Two case reports
Leng XF, Lei K, Li Y, Tian F, Yao Q, Zheng QM, Chen ZH
- 5744** Gastric mixed adenoma-neuroendocrine tumor: A case report
Kohno S, Aoki H, Kato M, Ogawa M, Yoshida K
- 5751** Sebaceous lymphadenocarcinoma of the parotid gland: A case report
Hao FY, Wang YL, Li SM, Xue LF
- 5758** Misdiagnosis of ligamentoid fibromatosis of the small mesenteric: A case report
Xu K, Zhao Q, Liu J, Zhou D, Chen YL, Zhu X, Su M, Huang K, Du W, Zhao H
- 5765** Intraoperative care of elderly patients with COVID-19 undergoing double lung transplantation: Two case reports
Wu Q, Wang Y, Chen HQ, Pan H
- 5773** Amelioration of cognitive impairment following growth hormone replacement therapy: A case report and review of literature
Liu JT, Su PH
- 5781** Early colon cancer with enteropathy-associated T-cell lymphoma involving the whole gastrointestinal tract: A case report
Zhang MY, Min CC, Fu WW, Liu H, Yin XY, Zhang CP, Tian ZB, Li XY

- 5790** Bleeding of two lumbar arteries caused by one puncture following percutaneous nephrolithotomy: A case report
Liu Q, Yang C, Lin K, Yang D
- 5795** Hemorrhagic fever with renal syndrome complicated with aortic dissection: A case report
Qiu FQ, Li CC, Zhou JY
- 5802** Robot-assisted laparoscopic pyeloureterostomy for ureteropelvic junction rupture sustained in a traffic accident: A case report
Kim SH, Kim WB, Kim JH, Lee SW
- 5809** Large leiomyoma of lower esophagus diagnosed by endoscopic ultrasonography-fine needle aspiration: A case report
Rao M, Meng QQ, Gao PJ
- 5816** Endoscopic reduction of colocolonic intussusception due to metastatic malignant melanoma: A case report
Kasuga K, Sakamoto T, Takamaru H, Sekiguchi M, Yamada M, Yamazaki N, Hashimoto T, Uraoka T, Saito Y
- 5821** Usefulness of ultrasonography to assess the response to steroidal therapy for the rare case of type 2b immunoglobulin G4-related sclerosing cholangitis without pancreatitis: A case report
Tanaka Y, Kamimura K, Nakamura R, Ohkoshi-Yamada M, Koseki Y, Mizusawa T, Ikarashi S, Hayashi K, Sato H, Sakamaki A, Yokoyama J, Terai S

LETTER TO THE EDITOR

- 5831** Is positivity for hepatitis C virus antibody predictive of lower risk of death in COVID-19 patients with cirrhosis?
Mangia A, Cenderello G, Verucchi G, Ciancio A, Fontana A, Piazzolla V, Minerva N, Squillante MM, Copetti M

ABOUT COVER

Peer-reviewer of *World Journal of Clinical Cases*, Dr. Galiatsatos Aristidis is an Associate Professor, Department of Biomedical Sciences, Division of Dental Technology, University of West Attica. After graduating from the Faculty of Dentistry of University of Thessaloniki in 1988, he completed his PhD in the Dental Prosthodontics Department of Athens University in 1996. From 1988 to 2005, he continued his professional training in the University of Athens as a Research Fellow in Prosthodontics. During the 1998-1999 academic year, he was hired as a paid research scientist in the same subject area. In 2009, he rose to Assistant and then Associate Professor in the University of West Attica. From September 2019, he has served as Director of the Division of Dental Technology. (L-Editor: Filipodia)

AIMS AND SCOPE

The primary aim of *World Journal of Clinical Cases* (*WJCC*, *World J Clin Cases*) is to provide scholars and readers from various fields of clinical medicine with a platform to publish high-quality clinical research articles and communicate their research findings online.

WJCC mainly publishes articles reporting research results and findings obtained in the field of clinical medicine and covering a wide range of topics, including case control studies, retrospective cohort studies, retrospective studies, clinical trials studies, observational studies, prospective studies, randomized controlled trials, randomized clinical trials, systematic reviews, meta-analysis, and case reports.

INDEXING/ABSTRACTING

The *WJCC* is now indexed in Science Citation Index Expanded (also known as SciSearch®), Journal Citation Reports/Science Edition, PubMed, and PubMed Central. The 2020 Edition of Journal Citation Reports® cites the 2019 impact factor (IF) for *WJCC* as 1.013; IF without journal self cites: 0.991; Ranking: 120 among 165 journals in medicine, general and internal; and Quartile category: Q3.

RESPONSIBLE EDITORS FOR THIS ISSUE

Production Editor: Ji-Hong Liu; Production Department Director: Xiang Li; Editorial Office Director: Jin-Lai Wang.

NAME OF JOURNAL

World Journal of Clinical Cases

ISSN

ISSN 2307-8960 (online)

LAUNCH DATE

April 16, 2013

FREQUENCY

Semimonthly

EDITORS-IN-CHIEF

Dennis A Bloomfield, Sandro Vento, Bao-Gan Peng

EDITORIAL BOARD MEMBERS

<https://www.wjgnet.com/2307-8960/editorialboard.htm>

PUBLICATION DATE

November 26, 2020

COPYRIGHT

© 2020 Baishideng Publishing Group Inc

INSTRUCTIONS TO AUTHORS

<https://www.wjgnet.com/bpg/gerinfo/204>

GUIDELINES FOR ETHICS DOCUMENTS

<https://www.wjgnet.com/bpg/GerInfo/287>

GUIDELINES FOR NON-NATIVE SPEAKERS OF ENGLISH

<https://www.wjgnet.com/bpg/gerinfo/240>

PUBLICATION ETHICS

<https://www.wjgnet.com/bpg/GerInfo/288>

PUBLICATION MISCONDUCT

<https://www.wjgnet.com/bpg/gerinfo/208>

ARTICLE PROCESSING CHARGE

<https://www.wjgnet.com/bpg/gerinfo/242>

STEPS FOR SUBMITTING MANUSCRIPTS

<https://www.wjgnet.com/bpg/GerInfo/239>

ONLINE SUBMISSION

<https://www.f6publishing.com>

Port-site metastasis of unsuspected gallbladder carcinoma with ossification after laparoscopic cholecystectomy: A case report

Kai-Jun Gao, Zhi-Long Yan, Yu Yu, Liang-Qi Guo, Chen Hang, Jia-Bin Yang, Mou-Cheng Zhang

ORCID number: Kai-Jun Gao 0000-0002-9052-9535; Zhi-Long Yan 0000-0003-2026-1075; Yu Yu 0000-0003-2562-009X; Liang-Qi Guo 0000-0001-7456-4990; Chen Hang 0000-0001-7248-1278; Jia-Bin Yang 0000-0002-1997-5276; Mou-Cheng Zhang 0000-0001-6564-4083.

Author contributions: Gao KJ and Zhang MC designed the report; Zhang MC and Yan ZL performed the surgery; Yu Y reviewed the literature and contributed to drafting the manuscript; Guo LQ analyzed and interpreted the imaging findings; Hang C performed the pathology analyses; Yang JB was responsible for the revision of the manuscript for important content; Gao KJ wrote the manuscript; All authors have read and approved the final manuscript.

Informed consent statement: Informed written consent was obtained from the patient for publication of this report and any accompanying images.

Conflict-of-interest statement: The authors declare that they have no conflicts of interest.

CARE Checklist (2016) statement: The authors have read the CARE Checklist (2016), and the manuscript was prepared and revised according to the CARE

Kai-Jun Gao, Liang-Qi Guo, Chen Hang, Jia-Bin Yang, Medical School of Ningbo University, Ningbo University, Ningbo 315211, Zhejiang Province, China

Zhi-Long Yan, Mou-Cheng Zhang, Department of Gastrointestinal Surgery, Ningbo First Hospital, Ningbo 315000, Zhejiang Province, China

Yu Yu, Department of Gastrointestinal Surgery, The Affiliated People's Hospital of Ningbo University, Ningbo 315100, Zhejiang Province, China

Corresponding author: Mou-Cheng Zhang, MD, Professor, Surgeon, Department of Gastrointestinal Surgery, Ningbo First Hospital, No. 59 Liuting Road, Ningbo 315000, Zhejiang Province, China. zhangmoucheng200@163.com

Abstract

BACKGROUND

Unsuspected gallbladder carcinoma (UGC) refers to cholecystectomy due to benign gallbladder disease, which is pathologically confirmed as gallbladder cancer during or after surgery. Port-site metastasis (PSM) of UGC following laparoscopic cholecystectomy is rare, especially after several years.

CASE SUMMARY

A 55-year-old man presenting with acute cholecystitis and gallstones was treated by laparoscopic cholecystectomy in July 2008. Histological analysis revealed unexpected papillary adenocarcinoma of the gallbladder with gallstones, which indicated that the tumor had spread to the muscular space (pT1b). Radical resection of gallbladder carcinoma was performed 10 d later. In January 2018, the patient was admitted to our hospital for a mass in the upper abdominal wall after surgery for gallbladder cancer 10 years ago. Laparoscopic exploration and complete resection of the abdominal wall tumor were successfully performed. Pathological diagnosis showed metastatic or invasive, moderately differentiated adenocarcinoma in fibrous tissue with massive ossification. Immunohistochemistry and medical history were consistent with invasion or metastasis of gallbladder carcinoma. His general condition was well at follow-up of 31 mo. No recurrence was found by ultrasound and epigastric enhanced computed tomography.

CONCLUSION

PSM of gallbladder cancer is often accompanied by peritoneal metastasis, which indicates poor prognosis. Once PSM occurs after surgery, laparoscopic

Checklist (2016).

Open-Access: This article is an open-access article that was selected by an in-house editor and fully peer-reviewed by external reviewers. It is distributed in accordance with the Creative Commons Attribution NonCommercial (CC BY-NC 4.0) license, which permits others to distribute, remix, adapt, build upon this work non-commercially, and license their derivative works on different terms, provided the original work is properly cited and the use is non-commercial. See: <http://creativecommons.org/licenses/by-nc/4.0/>

Manuscript source: Unsolicited manuscript

Specialty type: Medicine, research and experimental

Country/Territory of origin: China

Peer-review report's scientific quality classification

Grade A (Excellent): 0
Grade B (Very good): B, B
Grade C (Good): 0
Grade D (Fair): 0
Grade E (Poor): 0

Received: August 21, 2020

Peer-review started: August 21, 2020

First decision: September 12, 2020

Revised: September 23, 2020

Accepted: October 1, 2020

Article in press: October 1, 2020

Published online: November 26, 2020

P-Reviewer: Strainiene S

S-Editor: Gao CC

L-Editor: Filipodia

P-Editor: Wu YXJ



exploration is recommended to rule out abdominal metastasis to avoid unnecessary surgery.

Key Words: Port-site metastasis; Unsuspected gallbladder carcinoma; Heterotopic ossification; Laparoscopic cholecystectomy; Case report; Literature review

©The Author(s) 2020. Published by Baishideng Publishing Group Inc. All rights reserved.

Core Tip: Port-site metastasis of unsuspected gallbladder carcinoma occurring several years after laparoscopic cholecystectomy is rare. It is often accompanied by peritoneal metastasis with poor prognosis. We report a case of a 55-year-old man with port-site metastasis after surgery for gallbladder cancer 10 years ago. Complete resection of an abdominal wall tumor was successfully performed with no recurrence after 31 mo. Although recurrence of unsuspected gallbladder carcinoma is rare, physicians should remain vigilant for this possibility. Once port-site metastasis occurs after surgery, laparoscopic exploration or positron emission tomography/computed tomography is recommended to rule out abdominal metastasis. Complete tumor resection can improve prognosis.

Citation: Gao KJ, Yan ZL, Yu Y, Guo LQ, Hang C, Yang JB, Zhang MC. Port-site metastasis of unsuspected gallbladder carcinoma with ossification after laparoscopic cholecystectomy: A case report. *World J Clin Cases* 2020; 8(22): 5729-5736

URL: <https://www.wjgnet.com/2307-8960/full/v8/i22/5729.htm>

DOI: <https://dx.doi.org/10.12998/wjcc.v8.i22.5729>

INTRODUCTION

Unsuspected gallbladder carcinoma (UGC) is referred to as a carcinoma found during cholecystectomy due to benign gallbladder disease, which is pathologically confirmed as gallbladder cancer during or after surgery^[1]. Port-site metastasis (PSM) of UGC following laparoscopic cholecystectomy (LC) is rare with an incidence of 10.3%^[2]. PSM of UGC occurring several years after surgery is even rarer with only a few cases reported. The mechanism of the PSM is unknown, and many researchers have focused on bile overflow and pneumoperitoneum. We report a case of a 55-year-old man who was diagnosed with PSM after surgery for UGC 10 years ago. Laparoscopic exploration and complete resection of the abdominal wall tumor were successfully performed. PSM with obvious ossification was found. Some studies have confirmed that ossification often indicates good prognosis. Our patient had no recurrence after follow-up of 31 mo. The good prognosis of this patient may be related to ossification. We also reviewed the literature and retrieved seven relevant papers, which included 8 cases of late-type PSM of UGC. We analyzed the clinical and pathological features of those cases and summarized the treatment strategy based on our observations.

CASE PRESENTATION

Chief complaints

A 55-year-old man was admitted to our hospital for a mass in the upper abdominal wall after surgery for UGC 10 years ago.

History of present illness

The patient underwent LC at a community hospital due to acute cholecystitis and gallstones 10 years ago. Histological analysis revealed unexpected papillary adenocarcinoma of the gallbladder with gallstones, which indicated that the tumor had spread to the muscular space (pT1b). Radical resection of gallbladder carcinoma was performed 10 d later. During the operation, abdominal wall tissue (2 cm) around the trocar hole was not removed. The patient recovered well and followed up every 3 mo in the 1st year after surgery, and then every 6 mo or 1 yr with abdominal computed

tomography (CT) and tests of cancer-associated tumor markers, such as serum carcinoembryonic antigen (CEA) and serum cancer antigen 19-9 (CA19-9). During the follow-up period, the patient experienced no obvious discomfort. The patient visited our hospital 1 d after a mixed mass was found in the upper abdominal wall by ultrasound. He then was admitted to our hospital for further treatment. Enhanced magnetic resonance imaging (MRI) of the upper abdomen showed a space-occupying mass in the anterior wall of the upper abdomen.

History of past illness

The patient denied a history of hypertension, diabetes, and other relevant illnesses. No other surgery was performed during this period.

Personal and family history

The patient did not have a family history of cancer.

Physical examination

Old surgical scars of 20 cm were seen on the abdomen, and a hard mass was felt under the xiphoid process. No other abnormalities were found in the physical examination.

Laboratory examinations

Blood analysis revealed that complete blood count, blood biochemistry, and CEA, alpha fetoprotein, CA19-9, CA125, and CA153 were within normal limits, except for CA724, which was 7.98 U/mL (normal range 0-6.9 U/mL).

Imaging examinations

Ultrasound and enhanced MRI of the upper abdomen showed a space-occupying mass in the anterior wall of the upper abdomen (Figure 1A and 1B). No recurrence was found in other parts of the body by positron emission tomography (PET)/CT.

Pathology

Postoperative pathology showed that a gray-red mass had partial cystic degeneration, and hard calcification of the cyst wall. Microscopic examination showed atypical ethmoid hyperplasia (Figure 2A) protruding to the cystic cavity with massive necrosis and hemorrhage and interstitial ossification around multifocal carcinoma (Figure 2B) with infiltration into the fibrous stroma (Figure 2A and 2B). There was no neurovascular invasion, and several foci of cancer cells produced a bone-like matrix (Figure 2C). Partial cyst wall thickening and fibrosis with previous hemorrhage with hemosiderin deposition and interstitial fibrous bone were observed (Figure 2D). Pathological diagnosis was metastatic or invasive, moderately differentiated adenocarcinoma in the fibrous tissue with massive ossification. After consultation with the Department of Radiotherapy and Chemotherapy in our hospital, immunohistochemical staining was recommended to determine whether the metastasis originated from the gallbladder. Immunohistochemistry showed cytokeratin (CK) 7 (+++), CK20 (++), CEA (+), villin (+++), p53 (-), Ki-67 (+) 40%, CK19 (+++), HBME1 (-), and Wilms tumor (-).

FINAL DIAGNOSIS

Immunohistochemistry and medical history were consistent with the invasion or metastasis of gallbladder carcinoma. The final diagnosis was PSM of gallbladder cancer.

TREATMENT

Laparoscopic exploration and abdominal wall tumor resection were performed after excluding surgical contraindications. No ascites or metastatic nodules were found in the peritoneum and greater omentum during the operation. After the abdominal adhesion was separated, the mass located outside the peritoneum was observed with a size of approximately 5 cm × 3 cm × 3 cm (Figure 1C). An incision of about 5 cm was made above the mass in the right upper abdomen. After incision of the skin and subcutaneous tissue, the mass was found located in the muscular layer of the abdominal wall. The mass was completely removed (Figure 1D and 1E). After

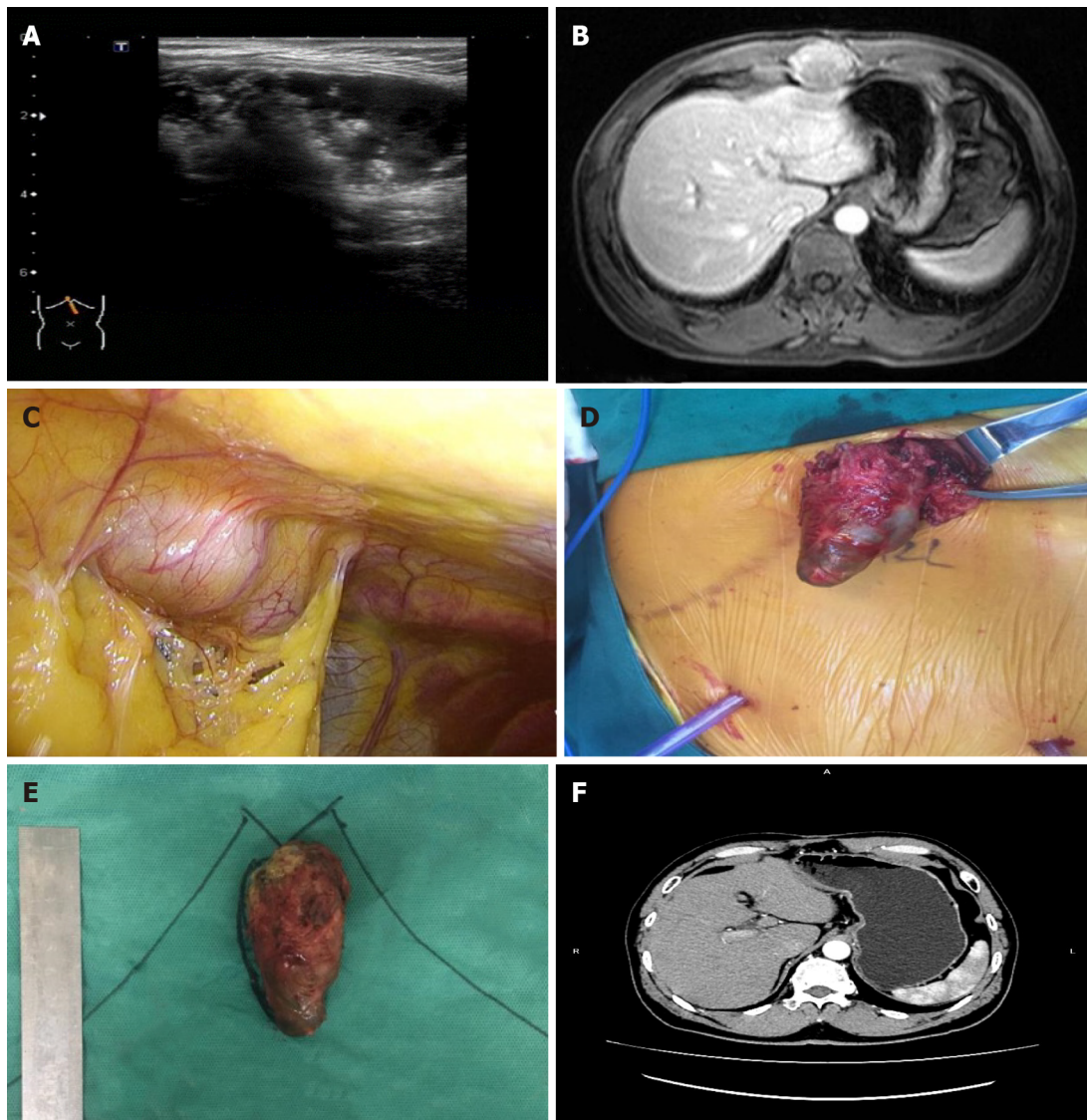


Figure 1 Imaging examinations of the upper abdomen and the specimens seen during and after surgery. A: A mixed mass in the upper abdomen was found by ultrasound; B: A mass under the xiphoid process showed by enhanced magnetic resonance imaging; C: Laparoscopic exploration of the mass located outside the peritoneum; D: The mass was located between the muscles of the upper abdominal wall; E: The mass was about 5 cm × 3 cm × 3 cm; F: No obvious recurrence was found by abdomen enhanced computed tomography 1 yr after the latest surgery.

consultation with the Department of Radiotherapy and Chemotherapy, further chemotherapy was recommended but was refused by the patient.

OUTCOME AND FOLLOW-UP

The patient was followed up every 3 mo with abdominal ultrasonography and tests of cancer-associated tumor markers. No recurrence was found by abdominal enhanced CT 1 yr after the latest surgery (Figure 1F). The patient has been followed up for 31 mo and is in good condition.

DISCUSSION

In recent years, the incidence of UGC has increased annually with the widespread use of LC. About 0.25%-3.0% of patients were diagnosed with UGC after surgery, accounting for 50% of all patients with gallbladder cancer^[3]. The overall prognosis of patients with gallbladder cancer is poor, and more than a third have metastasis at the time of diagnosis. In contrast, the pathological stage of UGC patients is relatively early

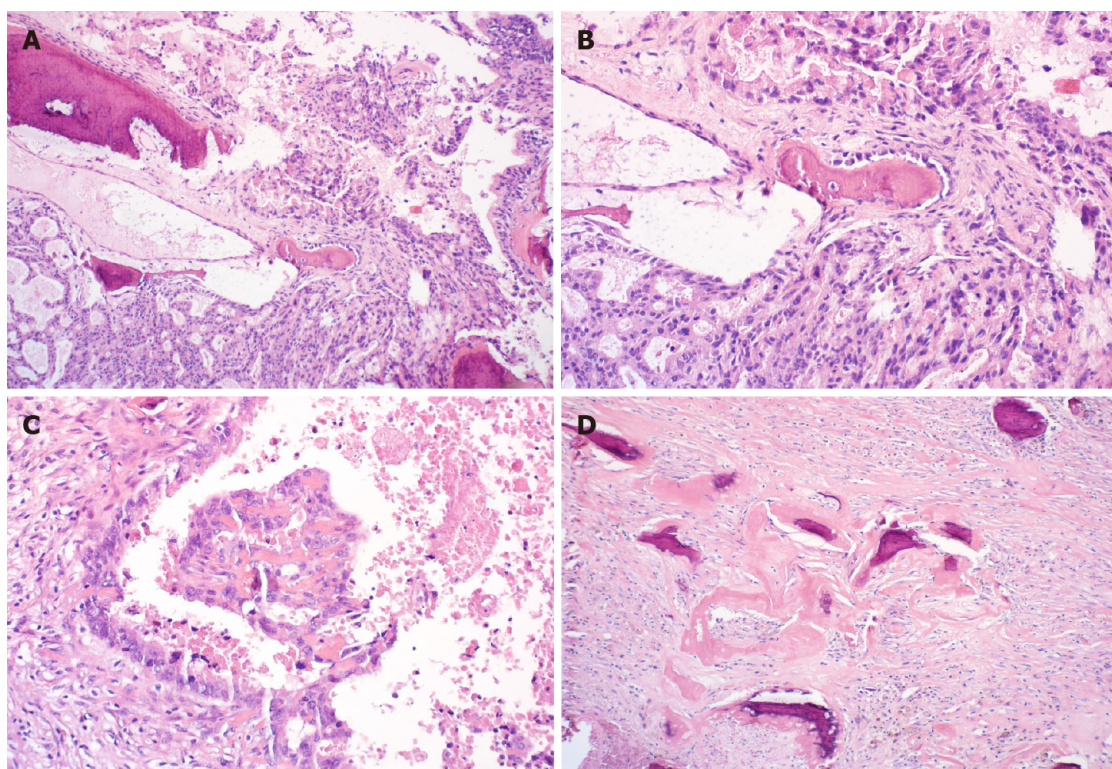


Figure 2 Postoperative pathological examination. A: Atypical epithelial cribriform hyperplasia was seen in some areas [hematoxylin and eosin (HE) 100 ×]; B: Protrusion into the cystic cavity with massive necrosis and hemorrhage; multifocal pericancerous interstitial ossification and infiltration into the fibrous stroma (HE 200 ×); C: Several foci of cancer cells produced a bone-like matrix (HE 200 ×); D: Part of the cyst wall thickening and fibrosis with previous hemorrhage and hemosiderin deposition and interstitial mass of fibrous bone (HE 100 ×).

with a pT2 of 50% and pT1 of 33.3%, and they have a relatively good prognosis^[4]. Papillary adenocarcinoma of the gallbladder accounts for about 5% of all gallbladder cancers, and prognosis of these patients is significantly better than that of patients with other types of gallbladder carcinoma. This may be due to the late infiltration of the gallbladder wall and growth into the cavity. It is easy to show the symptoms of obstruction, and early diagnosis can be made^[5]. PSM after UGC is rare and mostly occurs at 4-10 mo after surgery with a median time of 7 mo. It is often associated with poor prognosis such as peritoneal metastasis, and the median survival time after recurrence is only 10 mo^[6]. Berger-Richardson *et al*^[2] reported that the incidence of PSM in gallbladder cancer after LC decreased from 18.6% before 2000 to 10.3% after 2000, but it was still higher than that of other primary malignant tumors.

Cases of late-type PSM of UGC after surgery are even rarer, and only a few cases have been reported in the literature, with only 8 cases being identified over the past 3 years^[7-13] as shown in Table 1. So far, the longest time to recurrence is 12 years^[13]. It has been reported that late recurrence is more common in other primary tumors such as breast cancer and melanoma. This may be related to the lack of angiogenesis in micrometastasis, cell autophagy, and tumor inhibition by the immune system^[14]. Ninety percent of PSM occurs in the trocar hole from where the gallbladder specimen is extracted, which is higher than that in nongallbladder extraction sites (19%)^[2].

The possible mechanisms of PSM are as follows: (1) The outer wall of the gallbladder is contaminated by tumor cells. When the gallbladder specimen is removed, the tumor cells are directly planted on the resected specimen. Microperforation of the gallbladder wall and bile overflow caused by intraoperative clamping or improper surgical procedure are also involved. No incision protection is given during the operation, and the gallbladder specimen is not removed with an extraction bag; (2) Artificial pneumoperitoneum (CO₂) affects tumor cell implantation. Under the condition of artificial pneumoperitoneum, the pressure of gas in the abdominal cavity is higher than that of atmospheric pressure and some gas leaks along the trocar, which is called chimney effect^[15]. In addition, when the gas is filled into the abdominal cavity, the tumor cells may be atomized, which may cause incision metastasis of tumor cells^[16]; and (3) Postoperative incision trauma, blood osmosis, low immunity, and other factors provide favorable conditions for tumor cell implantation and growth.

Table 1 Cases of late-type port-site metastasis of unsuspected gallbladder carcinoma after surgery from PubMed (including the present case)

Ref.	Age/sex	First pathology	T stage	Interval	Second pathology	IHC	Rt or Cmt	Follow-up
Ciulla <i>et al</i> ^[7]	72/F	ADC	pT1	3 yr	ADC	Not performed	N	2 yr, alive
Wettstein <i>et al</i> ^[8]	74/F	ADC	PT1a	40 mo	ADC	Not performed	N	3 mo, died
Nakagawa <i>et al</i> ^[9]	73/F	ADC	pT2	44 mo	ADC	Not performed	Unknown	Unknown
Sharma <i>et al</i> ^[10]	58/F	Unknown	Unknown	4 yr	ADC	CK19 (+), CK20 (+)	Y, Gemcitabine and Cisplatin	Unknown
Sultania <i>et al</i> ^[11]	34/F	Unknown	Unknown	5 yr	ADC	Not performed	N	3 yr, alive
Sultania <i>et al</i> ^[11]	60/F	Unknown	Unknown	6 yr	ADC	CK7 (+), CK19 (+), CK20 (-)	Y, Gemcitabine and Oxaliplatin	3 mo, died
Tsujita <i>et al</i> ^[12]	55/M	ADC	pT2	139 mo	ADC	Not performed	Unknown	20 mo, alive
Carboni <i>et al</i> ^[13]	78/F	P-ADC	pT2	12 yr	ADC	CK7 (++), CK20 (+)	Y, Capecitabine	6 mo, alive
This case	59/M	P-ADC	pT1b	10 yr	ADC	CK7 (+++), CK19 (+++), CK20 (++)	N	31 mo, alive

ADC: Adenocarcinoma; Cmt: Chemotherapy; F: Female; IHC: Immunohistochemistry; M: Male; Rt: Radiotherapy; N: No; P-ADC: Papillary adenocarcinoma; pT: Pathologic tumor-node-metastasis; Y: Yes.

Pathological examination in our patient showed metastatic or invasive adenocarcinoma with massive ossification, but gallbladder carcinoma with ossification is not reported in the literature. Ossification is generally considered to be an adaptive mechanism that limits the spread of inflammation to control the spread of harmful processes and protect adjacent tissues^[17]. Some studies have confirmed that ossification of breast cancer often indicates good prognosis^[18]. Therefore, the good prognosis in the current patient may be related to ossification.

Although recurrence several years after UGC resection is rare, it is still necessary to be vigilant. Therefore, attention must be paid to specimen handling and incision protection during cholecystectomy to avoid bile spillover. In particular for patients with suspected gallbladder cancer, it is recommended to use extraction bags to reduce the possibility of tumor cell spread. The gallbladder specimen should be routinely dissected during the operation, and suspected cases must be examined by frozen section. It is suggested that the gallbladder should be exposed along the long axis, the adventitia or serosa of the gallbladder should be cut along the maximum diameter in the suspected lesions, and the specimens of suitable parts should be selected for frozen section examination^[19].

Although the removal of abdominal wall tissue around the trocar hole after laparoscopic two-stage radical UGC has nothing to do with recurrence and prognosis^[6], the prognosis is poor if the PSM occurs at trocar sites. Therefore, tissue resection should be performed on the trocar holes with clear contamination in order to reduce the possibility of implant recurrence. If PSM occurs after surgery, the patient's condition should be comprehensively evaluated. When local recurrence was found, PET/CT was used to check whether there were other sites of metastasis.

The main treatment of PSM after gallbladder cancer is complete resection. If radical surgery is feasible, the tumor should be resected as soon as possible. As shown in Table 1, surgery was performed in all previous cases. Because PSM of gallbladder cancer is often accompanied by peritoneal metastasis, laparoscopic exploration is recommended to exclude abdominal metastasis in order to avoid unnecessary surgery. To improve prognosis, the tumor should be removed completely during the operation. In the current patient, no recurrence was found in other parts of the body by PET/CT. The abdominal wall mass was isolated outside the peritoneum and there was no peritoneal metastasis through laparoscopic exploration. Therefore, resection of the abdominal wall tumor was performed.

Limited data support combined gemcitabine, capecitabine, and radiation therapy for patients with residual cancer^[20], but there is no clear guideline. As shown in Table 1, only three patients received postoperative chemotherapy, but one of them had

peritoneal and pulmonary metastases at 3 mo after surgery. Our patient refused further chemotherapy treatment after operation, and there was no recurrence at follow-up of 31 mo. We recommend the follow-up strategies for these patients as follows: (1) Abdominal ultrasound and tests of cancer-associated tumor markers performed every 3 mo within 1 year after surgery; (2) An enhanced CT performed within 1 year; and (3) If there is evidence of recurrence, the patient should be followed up every 6 mo.

CONCLUSION

We report a case of PSM 10 years after resection of UGC, and postoperative pathology showed papillary adenocarcinoma complicated with massive ossification. The patient was followed up for 31 mo after surgery, and his condition is good. Although this late type of PSM is rare, we must pay attention to it. For such patients, we recommend that PET/CT should be performed before surgery to exclude metastases at other sites. Laparoscopic exploration should be performed to avoid unnecessary excessive surgery. The final diagnosis should be made based on postoperative pathology combined with medical history and immunohistochemistry to determine whether the metastasis originated from gallbladder. We hope to find more tumor patients with PSM to determine whether further treatment is needed after surgery in an attempt to provide experience in PSM of UGC.

ACKNOWLEDGEMENTS

We thank the patient for permitting us to use his data to complete this article.

REFERENCES

- 1 **Lundgren L**, Muszynska C, Ros A, Persson G, Gimm O, Valter L, Andersson B, Sandström P. Are Incidental Gallbladder Cancers Missed with a Selective Approach of Gallbladder Histology at Cholecystectomy? *World J Surg* 2018; **42**: 1092-1099 [PMID: 28900706 DOI: 10.1007/s00268-017-4215-0]
- 2 **Berger-Richardson D**, Chesney TR, Englesakis M, Govindarajan A, Cleary SP, Swallow CJ. Trends in port-site metastasis after laparoscopic resection of incidental gallbladder cancer: A systematic review. *Surgery* 2017; **161**: 618-627 [PMID: 27743715 DOI: 10.1016/j.surg.2016.08.007]
- 3 **Cavallaro A**, Piccolo G, Panebianco V, Lo Menzo E, Berretta M, Zanghi A, Di Vita M, Cappellani A. Incidental gallbladder cancer during laparoscopic cholecystectomy: managing an unexpected finding. *World J Gastroenterol* 2012; **18**: 4019-4027 [PMID: 22912553 DOI: 10.3748/wjg.v18.i30.4019]
- 4 **Søreide K**, Guest RV, Harrison EM, Kendall TJ, Garden OJ, Wigmore SJ. Systematic review of management of incidental gallbladder cancer after cholecystectomy. *Br J Surg* 2019; **106**: 32-45 [PMID: 30582640 DOI: 10.1002/bjs.11035]
- 5 **Wan X**, Zhang H, Chen C, Yang X, Wang A, Zhu C, Fu L, Miao R, He L, Yang H, Zhao H, Sang X. Clinicopathological features of gallbladder papillary adenocarcinoma. *Medicine (Baltimore)* 2014; **93**: e131 [PMID: 25501049 DOI: 10.1097/MD.0000000000000131]
- 6 **Fuks D**, Regimbeau JM, Pessaux P, Bachellier P, Raventos A, Manton G, Gigot JF, Chiche L, Pascal G, Azoulay D, Laurent A, Letoublon C, Boleslawski E, Rivoire M, Mabrut JY, Adham M, Le Treut YP, Delperro JR, Navarro F, Ayav A, Boudjema K, Nuzzo G, Scotte M, Farges O. Is port-site resection necessary in the surgical management of gallbladder cancer? *J Visc Surg* 2013; **150**: 277-284 [PMID: 23665059 DOI: 10.1016/j.jvisc.2013.03.006]
- 7 **Ciulla A**, Romeo G, Genova G, Tomasello G, Agnello G, Cstronovo G. Gallbladder carcinoma late metastases and incisional hernia at umbilical port site after laparoscopic cholecystectomy. *G Chir* 2006; **27**: 214-216 [PMID: 16857110]
- 8 **Wettstein AR**, Field AS, Hugh TB, Vickers CR. Implantation carcinoma developing late after laparoscopic cholecystectomy for superficial carcinoma of the gall-bladder. *Aust N Z J Surg* 1999; **69**: 406-407 [PMID: 10353567 DOI: 10.1046/j.1440-1622.1999.01590.x]
- 9 **Nakagawa S**, Tada T, Furukawa H, Abe M, Hatakeyama K. Late-type recurrence at the port site of unexpected gallbladder carcinoma after a laparoscopic cholecystectomy: report of a case. *Surg Today* 2000; **30**: 853-855 [PMID: 11039719 DOI: 10.1007/s005950070073]
- 10 **Sharma P**, Chatterjee P. Late Port Site Metastasis from Occult Gall Bladder Carcinoma After Laparoscopic Cholecystectomy for Cholelithiasis: The Role of (18)F-FDG PET/CT. *Nucl Med Mol Imaging* 2014; **48**: 317-320 [PMID: 26396639 DOI: 10.1007/s13139-014-0294-0]
- 11 **Sultania M**, Pandey D, Sharma J, Mallick S, Mridha AR. Delayed isolated port-site metastasis of gallbladder cancer following laparoscopic cholecystectomy: report of two cases. *J Gastrointest Cancer* 2014; **45** Suppl 1: 188-191 [PMID: 24870252 DOI: 10.1007/s12029-014-9622-y]
- 12 **Tsujita E**, Ikeda Y, Kinjo N, Uezu I, Matsuyama J, Kawano H, Yamaguchi S, Egashira A, Minami K, Yamamoto M, Kumagai R, Taguchi K, Morita M, Toh Y, Okamura T. Late-type port-site recurrence of

- unexpected gallbladder carcinoma 11 years after laparoscopic cholecystectomy. *Asian J Endosc Surg* 2014; 7: 304-307 [PMID: 25354373 DOI: 10.1111/ases.12125]
- 13 **Carboni F**, Federici O, Giofrè M, Diodoro M, Valle M. Recurrence of gallbladder carcinoma 12 years after laparoscopic cholecystectomy. *Clin Res Hepatol Gastroenterol* 2019; 43: e1-e3 [PMID: 30174266 DOI: 10.1016/j.clinre.2018.08.002]
- 14 **Hanahan D**, Weinberg RA. Hallmarks of cancer: the next generation. *Cell* 2011; 144: 646-674 [PMID: 21376230 DOI: 10.1016/j.cell.2011.02.013]
- 15 **Iwanaka T**, Arya G, Ziegler MM. Mechanism and prevention of port-site tumor recurrence after laparoscopy in a murine model. *J Pediatr Surg* 1998; 33: 457-461 [PMID: 9537557 DOI: 10.1016/s0022-3468(98)90088-4]
- 16 **Wittich P**, Marquet RL, Kazemier G, Bonjer HJ. Port-site metastases after CO(2) laparoscopy. Is aerosolization of tumor cells a pivotal factor? *Surg Endosc* 2000; 14: 189-192 [PMID: 10656959 DOI: 10.1007/s004649900098]
- 17 **Fuery MA**, Liang L, Kaplan FS, Mohler ER 3rd. Vascular ossification: Pathology, mechanisms, and clinical implications. *Bone* 2018; 109: 28-34 [PMID: 28688892 DOI: 10.1016/j.bone.2017.07.006]
- 18 **Downs-Kelly E**, Nayeemuddin KM, Albarracin C, Wu Y, Hunt KK, Gilcrease MZ. Matrix-producing carcinoma of the breast: an aggressive subtype of metaplastic carcinoma. *Am J Surg Pathol* 2009; 33: 534-541 [PMID: 19047898 DOI: 10.1097/PAS.0b013e31818ab26e]
- 19 **Dincel O**, Goksu M, Hatipoglu HS. Importance of routine histopathological examination of a gallbladder surgical specimen: Unexpected gallbladder cancer. *J Cancer Res Ther* 2018; 14: 1325-1329 [PMID: 30488851 DOI: 10.4103/0973-1482.187301]
- 20 **Vinuela E**, Vega EA, Yamashita S, Sanhueza M, Mege R, Cavada G, Aloia TA, Chun YS, Lee JE, Vauthey JN, Conrad C. Incidental Gallbladder Cancer: Residual Cancer Discovered at Oncologic Extended Resection Determines Outcome: A Report from High- and Low-Incidence Countries. *Ann Surg Oncol* 2017; 24: 2334-2343 [PMID: 28417239 DOI: 10.1245/s10434-017-5859-6]



Published by **Baishideng Publishing Group Inc**
7041 Koll Center Parkway, Suite 160, Pleasanton, CA 94566, USA

Telephone: +1-925-3991568

E-mail: bpgoffice@wjgnet.com

Help Desk: <https://www.f6publishing.com/helpdesk>

<https://www.wjgnet.com>

