

# World Journal of *Clinical Cases*

*World J Clin Cases* 2021 February 26; 9(6): 1247-1498



## Contents

Thrice Monthly Volume 9 Number 6 February 26, 2021

## EDITORIAL

- 1247 Interactive platform for peer review: A proposal to improve the current peer review system  
*Emile SH*

## MINIREVIEWS

- 1251 Animal models of cathartic colon  
*Meng YY, Li QD, Feng Y, Liu J, Wang EK, Zhong L, Sun QL, Yuan JY*

## ORIGINAL ARTICLE

## Case Control Study

- 1259 New indicators in evaluation of hemolysis, elevated liver enzymes, and low platelet syndrome: A case-control study  
*Kang SY, Wang Y, Zhou LP, Zhang H*

## Retrospective Study

- 1271 Analysis of hospitalization costs related to fall injuries in elderly patients  
*Su FY, Fu ML, Zhao QH, Huang HH, Luo D, Xiao MZ*
- 1284 Effect of alprostadil in the treatment of intensive care unit patients with acute renal injury  
*Jia Y, Liu LL, Su JL, Meng XH, Wang WX, Tian C*

## Clinical Trials Study

- 1293 Etomidate *vs* propofol in coronary heart disease patients undergoing major noncardiac surgery: A randomized clinical trial  
*Dai ZL, Cai XT, Gao WL, Lin M, Lin J, Jiang YX, Jiang X*

## Observational Study

- 1304 Healthy individuals *vs* patients with bipolar or unipolar depression in gray matter volume  
*Zhang YN, Li H, Shen ZW, Xu C, Huang YJ, Wu RH*
- 1318 Impact of metabolism-related mutations on the heart rate of gastric cancer patients after peritoneal lavage  
*Yuan Y, Yao S, Luo GH, Zhang XY*

## CASE REPORT

- 1329 Efficacy of afatinib in a patient with rare EGFR (G724S/R776H) mutations and amplification in lung adenocarcinoma: A case report  
*He SY, Lin QF, Chen J, Yu GP, Zhang JL, Shen D*

- 1336** Esophageal superficial adenosquamous carcinoma resected by endoscopic submucosal dissection: A rare case report  
*Liu GY, Zhang JX, Rong L, Nian WD, Nian BX, Tian Y*
- 1343** Do medullary thyroid carcinoma patients with high calcitonin require bilateral neck lymph node clearance? A case report  
*Gan FJ, Zhou T, Wu S, Xu MX, Sun SH*
- 1353** Femoral epithelioid hemangioendothelioma detected with magnetic resonance imaging and positron emission tomography/computed tomography: A case report  
*Zhao HG, Zhang KW, Hou S, Dai YY, Xu SB*
- 1359** Noninvasive tools based on immune biomarkers for the diagnosis of central nervous system graft-vs-host disease: Two case reports and a review of the literature  
*Lyu HR, He XY, Hao HJ, Lu WY, Jin X, Zhao YJ, Zhao MF*
- 1367** Periodontally accelerated osteogenic orthodontics with platelet-rich fibrin in an adult patient with periodontal disease: A case report and review of literature  
*Xu M, Sun XY, Xu JG*
- 1379** Subtalar joint pigmented villonodular synovitis misdiagnosed at the first visit: A case report  
*Zhao WQ, Zhao B, Li WS, Assan I*
- 1386** Wilson disease — the impact of hyperimmunity on disease activity: A case report  
*Stremmel W, Longerich T, Liere R, Vacata V, van Helden J, Weiskirchen R*
- 1394** Unexplained elevation of erythrocyte sedimentation rate in a patient recovering from COVID-19: A case report  
*Pu SL, Zhang XY, Liu DS, Ye BN, Li JQ*
- 1402** Thoracic pyogenic infectious spondylitis presented as pneumothorax: A case report  
*Cho MK, Lee BJ, Chang JH, Kim YM*
- 1408** Unilateral pulmonary hemorrhage caused by negative pressure pulmonary edema: A case report  
*Park HJ, Park SH, Woo UT, Cho SY, Jeon WJ, Shin WJ*
- 1416** Osseous Rosai-Dorfman disease of tibia in children: A case report  
*Vithran DTA, Wang JZ, Xiang F, Wen J, Xiao S, Tang WZ, Chen Q*
- 1424** Abdominopelvic leiomyoma with large ascites: A case report and review of the literature  
*Wang YW, Fan Q, Qian ZX, Wang JJ, Li YH, Wang YD*
- 1433** Unusual presentation of granulomatosis with polyangiitis causing periaortitis and consequent subclavian steal syndrome: A case report  
*Cho U, Kim SK, Ko JM, Yoo J*
- 1439** Postoperative discal pseudocyst and its similarities to discal cyst: A case report  
*Fu CF, Tian ZS, Yao LY, Yao JH, Jin YZ, Liu Y, Wang YY*

- 1446** Treatment of oral lichen planus by surgical excision and acellular dermal matrix grafting: Eleven case reports and review of literature  
*Fu ZZ, Chen LQ, Xu YX, Yue J, Ding Q, Xiao WL*
- 1455** Nonalcoholic fatty liver disease as a risk factor for cytomegalovirus hepatitis in an immunocompetent patient: A case report  
*Khiatah B, Nasrollah L, Covington S, Carlson D*
- 1461** Early reoccurrence of traumatic posterior atlantoaxial dislocation without fracture: A case report  
*Sun YH, Wang L, Ren JT, Wang SX, Jiao ZD, Fang J*
- 1469** Intrahepatic cholangiocarcinoma is more complex than we thought: A case report  
*Zeng JT, Zhang JF, Wang Y, Qing Z, Luo ZH, Zhang YL, Zhang Y, Luo XZ*
- 1475** Congenital hepatic fibrosis in a young boy with congenital hypothyroidism: A case report  
*Xiao FF, Wang YZ, Dong F, Li XL, Zhang T*
- 1483** Polidocanol sclerotherapy for multiple gastrointestinal hemangiomas: A case report  
*Yao H, Xie YX, Guo JY, Wu HC, Xie R, Shi GQ*
- 1490** Gastrointestinal stromal tumor with multisegmental spinal metastases as first presentation: A case report and review of the literature  
*Kong Y, Ma XW, Zhang QQ, Zhao Y, Feng HL*

**ABOUT COVER**

Editorial Board Member of *World Journal of Clinical Cases*, Dr. Quach is an Associate Professor of Gastroenterology at the University of Medicine and Pharmacy at Hochiminh City, Viet Nam, where he received his MD in 1997 and his PhD in 2011. Dr. Quach has published more than 100 reviews and original papers in local and international journals. He has received several awards, including Outstanding Presentation at the Biannual Scientific Congress of Vietnamese Nationwide Medical Schools, Medal of Creativeness from the Vietnamese Central Youth League, etc. Currently, he serves as a Vice President of the Vietnam Association of Gastroenterology and Secretary General of the Vietnam Federation for Digestive Endoscopy. (L-Editor: Filipodia)

**AIMS AND SCOPE**

The primary aim of *World Journal of Clinical Cases* (*WJCC*, *World J Clin Cases*) is to provide scholars and readers from various fields of clinical medicine with a platform to publish high-quality clinical research articles and communicate their research findings online.

*WJCC* mainly publishes articles reporting research results and findings obtained in the field of clinical medicine and covering a wide range of topics, including case control studies, retrospective cohort studies, retrospective studies, clinical trials studies, observational studies, prospective studies, randomized controlled trials, randomized clinical trials, systematic reviews, meta-analysis, and case reports.

**INDEXING/ABSTRACTING**

The *WJCC* is now indexed in Science Citation Index Expanded (also known as SciSearch®), Journal Citation Reports/Science Edition, Scopus, PubMed, and PubMed Central. The 2020 Edition of Journal Citation Reports® cites the 2019 impact factor (IF) for *WJCC* as 1.013; IF without journal self cites: 0.991; Ranking: 120 among 165 journals in medicine, general and internal; and Quartile category: Q3. The *WJCC*'s CiteScore for 2019 is 0.3 and Scopus CiteScore rank 2019: General Medicine is 394/529.

**RESPONSIBLE EDITORS FOR THIS ISSUE**

Production Editor: Ji-Hong Lin; Production Department Director: Xiang Li; Editorial Office Director: Jin-Lai Wang.

**NAME OF JOURNAL**

*World Journal of Clinical Cases*

**ISSN**

ISSN 2307-8960 (online)

**LAUNCH DATE**

April 16, 2013

**FREQUENCY**

Thrice Monthly

**EDITORS-IN-CHIEF**

Dennis A Bloomfield, Sandro Vento, Bao-Gan Peng

**EDITORIAL BOARD MEMBERS**

<https://www.wjgnet.com/2307-8960/editorialboard.htm>

**PUBLICATION DATE**

February 26, 2021

**COPYRIGHT**

© 2021 Baishideng Publishing Group Inc

**INSTRUCTIONS TO AUTHORS**

<https://www.wjgnet.com/bpg/gerinfo/204>

**GUIDELINES FOR ETHICS DOCUMENTS**

<https://www.wjgnet.com/bpg/GerInfo/287>

**GUIDELINES FOR NON-NATIVE SPEAKERS OF ENGLISH**

<https://www.wjgnet.com/bpg/gerinfo/240>

**PUBLICATION ETHICS**

<https://www.wjgnet.com/bpg/GerInfo/288>

**PUBLICATION MISCONDUCT**

<https://www.wjgnet.com/bpg/gerinfo/208>

**ARTICLE PROCESSING CHARGE**

<https://www.wjgnet.com/bpg/gerinfo/242>

**STEPS FOR SUBMITTING MANUSCRIPTS**

<https://www.wjgnet.com/bpg/GerInfo/239>

**ONLINE SUBMISSION**

<https://www.f6publishing.com>

## Retrospective Study

## Analysis of hospitalization costs related to fall injuries in elderly patients

Fei-Yue Su, Mei-Ling Fu, Qing-Hua Zhao, Huan-Huan Huang, Di Luo, Ming-Zhao Xiao

**ORCID number:** Fei-Yue Su 0000-0003-3241-9132; Mei-Ling Fu 0000-0003-2326-0430; Qing-Hua Zhao 0000-0003-0403-3574; Huan-Huan Huang 0000-0003-0845-7526; Di Luo 0000-0002-1256-7595; Ming-Zhao Xiao 0000-0003-0694-1234.

**Author contributions:** Su FY, Fu ML and Xiao MZ designed the study; Su FY, Huang HH and Luo D performed the experiments and collected the data; Su FY analyzed the data and wrote the manuscript; and Zhao QH and Xiao MZ reviewed and edited the manuscript; all authors read and approved the final manuscript.

**Supported by** The National Key Research and Development Project, No. 2020YFC2005900.

**Institutional review board statement:** The study was approved by the Ethics Committee of the First Affiliated Hospital of Chongqing Medical University (Approval No. 2019-288).

**Informed consent statement:** Informed written consent was obtained from the patients for publication of this report and any accompanying images.

**Conflict-of-interest statement:** The authors declare that they have no conflicts of interest.

**Fei-Yue Su, Di Luo, Ming-Zhao Xiao,** Department of Urology, The First Affiliated Hospital of Chongqing Medical University, Chongqing 400016, China

**Mei-Ling Fu,** Department of Medical Insurance, The First Affiliated Hospital of Chongqing Medical University, Chongqing 400016, China

**Qing-Hua Zhao, Huan-Huan Huang,** Department of Nursing, The First Affiliated Hospital of Chongqing Medical University, Chongqing 400016, China

**Corresponding author:** Ming-Zhao Xiao, MM, Chief Doctor, Professor, Department of Urology, The First Affiliated Hospital of Chongqing Medical University, No. 1 Youyi Road, Yuzhong District, Chongqing 400016, China. [xmz.2004@163.com](mailto:xmz.2004@163.com)

## Abstract

## BACKGROUND

With the aging world population, the incidence of falls has intensified and fall-related hospitalization costs are increasing. Falls are one type of event studied in the health economics of patient safety, and many developed countries have conducted such research on fall-related hospitalization costs. However, China, a developing country, still lacks large-scale studies in this area.

## AIM

To investigate the factors related to the hospitalization costs of fall-related injuries in elderly inpatients and establish factor-based, cost-related groupings.

## METHODS

A retrospective study was conducted. Patient information and cost data for elderly inpatients (age  $\geq 60$  years,  $n = 3362$ ) who were hospitalized between 2016 and 2019 due to falls was collected from the medical record systems of two grade-A tertiary hospitals in China. Quantile regression (QR) analysis was used to identify the factors related to fall-related hospitalization costs. A decision tree model based on the chi-squared automatic interaction detector algorithm for hospitalization cost grouping was built by setting the factors in the regression results as separation nodes.

## RESULTS

The total hospitalization cost of fall-related injuries in the included elderly patients was 180479203.03 RMB, and the reimbursement rate of medical benefit

**Data sharing statement:** The data underlying this article were provided by The First Affiliated Hospital of Chongqing Medical University and the Jinshan Branch of The First Affiliated Hospital of Chongqing Medical University under licence. Data will be shared on request to the corresponding author with permission of The First Affiliated Hospital of Chongqing Medical University and the Jinshan Branch of The First Affiliated Hospital of Chongqing Medical University.

**Open-Access:** This article is an open-access article that was selected by an in-house editor and fully peer-reviewed by external reviewers. It is distributed in accordance with the Creative Commons Attribution NonCommercial (CC BY-NC 4.0) license, which permits others to distribute, remix, adapt, build upon this work non-commercially, and license their derivative works on different terms, provided the original work is properly cited and the use is non-commercial. See: <http://creativecommons.org/licenses/by-nc/4.0/>

**Manuscript source:** Unsolicited manuscript

**Specialty type:** Geriatrics and gerontology

**Country/Territory of origin:** China

**Peer-review report's scientific quality classification**

Grade A (Excellent): 0  
Grade B (Very good): 0  
Grade C (Good): 0  
Grade D (Fair): 0  
Grade E (Poor): 0

**Received:** August 13, 2020

**Peer-review started:** August 13, 2020

**First decision:** November 23, 2020

**Revised:** December 3, 2020

**Accepted:** December 16, 2020

**Article in press:** December 16, 2020

**Published online:** February 26, 2021

**P-Reviewer:** Lukman AF

**S-Editor:** Zhang H

**L-Editor:** Webster JR

funds was 51.0% (92039709.52 RMB/180479203.03 RMB). The medical material costs were the highest component of the total hospitalization cost, followed (in order) by drug costs, test costs, treatment costs, integrated medical service costs and blood transfusion costs. The QR results showed that patient age, gender, length of hospital stay, payment method, wound position, wound type, operation times and operation type significantly influenced the inpatient cost ( $P < 0.05$ ). The cost grouping model was established based on the QR results, and age, length of stay, operation type, wound position and wound type were the most important influencing factors in the model. Furthermore, the cost of each combination varied significantly.

## CONCLUSION

Our grouping model of hospitalization costs clearly reflected the key factors affecting hospitalization costs and can be used to strengthen the reasonable control of these costs.

**Key Words:** Falls; Elderly; Hospitalization costs; Quantile regression model; Decision tree model; Prevention

©The Author(s) 2021. Published by Baishideng Publishing Group Inc. All rights reserved.

**Core Tip:** This retrospective study investigated the composition and factors of the hospitalization costs of fall-related injuries in elderly inpatients and established a factor-based, cost-related group. The total hospitalization costs were 180479203.03 RMB. The quantile regression (QR) results showed that patient age, gender, length of hospital stay, payment method, wound position, wound type, operation times and operation type significantly influenced the inpatient cost ( $P < 0.05$ ). The cost grouping model was established based on the QR results, and the cost of each combination varied significantly. Our grouping model of hospitalization costs clearly reflects the key factors affecting hospitalization costs.

**Citation:** Su FY, Fu ML, Zhao QH, Huang HH, Luo D, Xiao MZ. Analysis of hospitalization costs related to fall injuries in elderly patients. *World J Clin Cases* 2021; 9(6): 1271-1283

**URL:** <https://www.wjgnet.com/2307-8960/full/v9/i6/1271.htm>

**DOI:** <https://dx.doi.org/10.12998/wjcc.v9.i6.1271>

## INTRODUCTION

Falls are defined as “events which result in a person coming to rest inadvertently on the ground or floor or other lower level”<sup>[1]</sup>. Due to aging of the world population, the incidence of falls has intensified, and the incidence rate in developing countries is greater than that in developed countries<sup>[2]</sup>. China has been characterized as an aging society since 1999 and is one of the fastest-aging countries in the world<sup>[3]</sup>. From 2006-2016, the death rate due to falls in China remained relatively high and rose slightly<sup>[4]</sup>. Falls are also a leading cause of death in developed countries, with one-third of adults aged over 65 falling each year<sup>[5]</sup>. Regarding the global ranking of causes of death, the World Health Organization has predicted that the ranking of falls will rise from 21<sup>st</sup> in 2012 to 17<sup>th</sup> by 2030 if preventive measures are not taken<sup>[6]</sup>. Falls are the leading cause of accidental injury and death among adults aged over 65 and are the main cause of disability, dysfunction and death in the elderly population<sup>[7,8]</sup>.

The high incidence of injuries after falls results in high medical costs, placing a heavy burden on families and society. According to data from the United States Centers for Disease Control, in 2001 the economic burden caused by falls was US \$20 million<sup>[9]</sup>. Falls among elderly individuals cost the US health care system US \$30 billion in direct medical expenses alone in 2011; this amount would be much higher if long-term care costs were considered<sup>[10]</sup>.

The second Global Ministerial Summit on Patient Safety, held in Bonn, Germany in 2017, released the report “The economics of patient safety: Strengthening a value-based approach to reducing patient harm at national level”<sup>[11]</sup>, highlighting the need for



P-Editor: Ma YJ



health economics research from the patient safety perspective. Partly constituting research on the health economics of patient safety, studies on the economic burden and influencing factors of falls can help in focusing attention on fall prevention.

Studies have been conducted on the cost of falls<sup>[12-14]</sup>, but few have investigated the waste of medical benefit funds or conducted a factor analysis of costs at different levels. To fill this gap, we identified the factors affecting hospitalization costs through quantile regression (QR) analysis. The chi-squared automatic interaction detector (CHAID) decision tree model was used to construct the grouping model of hospital costs for inpatients with fall injuries to further identify the important influencing factors. This research is meaningful for recognizing the importance of fall prevention and providing reasonable suggestions to control hospitalization costs based on health economics theory from the patient safety perspective.

## MATERIALS AND METHODS

We conducted a retrospective study by searching and selecting the medical records of elderly inpatients due to falls from 2016-2019 in the electronic medical record system (EMRS) of two hospitals in China.

### Setting

The study was conducted in two participating hospitals: The First Affiliated Hospital of Chongqing Medical University and Jinshan Branch of the First Affiliated Hospital of Chongqing Medical University. The First Affiliated Hospital of Chongqing Medical University is a large-scale comprehensive teaching hospital that integrates medical treatment, teaching, scientific research, prevention, and health care and involves a foreign element; it has a 3200-bed tertiary referral center. Jinshan Branch of the First Affiliated Hospital of Chongqing Medical University is also a tertiary referral center. It has 1000 beds and is the only large public hospital in the new north zone. This facility integrates medical treatment, rehabilitation, prevention, and health care and involves a foreign element. The two hospitals have the same EMRS, hospital information system (HIS) and medical insurance management information system.

### Participants

Patient records were selected if they met the following criteria: (1) According to the electronic medical record, patients were diagnosed with fall-related injuries upon admission; alternatively, the chief complaint recorded and history of present illness included the keywords "falling", "falls", "slip", "stumble", "trip", or "tumble"; (2) Patients were discharged between January 1, 2016, and December 31, 2019; and (3) Patients were  $\geq 60$  years old. A total of 4059 cases were included. **Figure 1** presents a diagram of the inclusion and exclusion process. A total of 3362 valid data points were collected after exclusion.

### Data collection

Based on the results of previous studies and data availability, we imported the patient ID numbers from the EMRS into the HIS to select their gender, age, marital status, length of stay (LOS), operation times, payment method, employment status, community type, pattern of admission, wound position, wound type, operation type and hospitalization costs for analysis. Medicare reimbursement information was obtained from the medical insurance management information system.

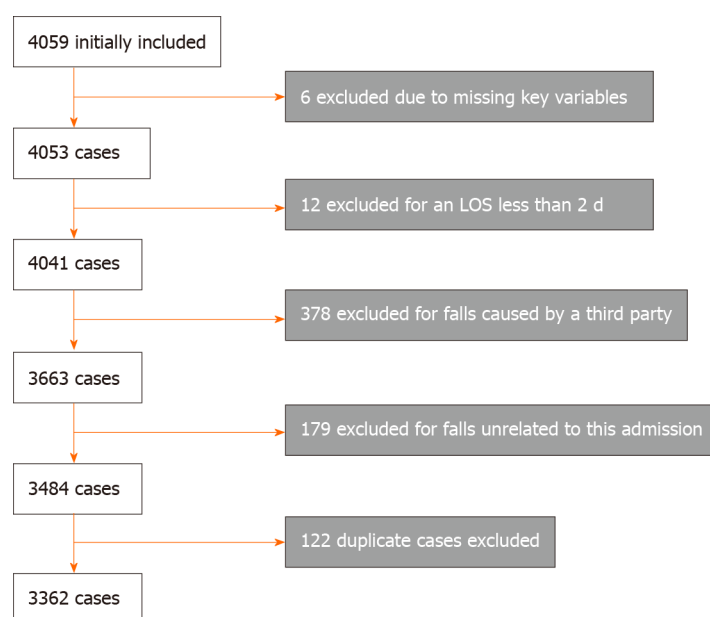
### Statistical analysis

Before the study, we discussed and built scientific investigation projects with experts in related fields and conducted training for two graduate students participating in this work to explain the research purpose and data retrieval process. During this study, relevant data were collected and numbered based on each hospital's conditions. Double entry and validation were conducted during data collection and entry to ensure data accuracy.

The consumer price index (CPI) from 2016-2019 published by the National Bureau of Statistics of the People's Republic of China was used to revise amounts to eliminate the impact of inflation and to make the comparison of costs more scientific. The CPI in 2016, 2017, 2018 and 2019 was 101.8%, 101%, 102% and 104.7%, respectively<sup>[15]</sup>.

Excel 2010 was used to establish the database. SPSS 23.0 and STATA 15.1 were used for analysis. The medical costs for the enrolled subjects presented a skewed distribution, which was described by M (P25, P75). Univariate analysis was performed





**Figure 1** Flow diagram of included and excluded cases. LOS: Length of stay.

using the rank-sum test and Spearman correlation analysis, and a test level of 0.05 was set. The items with statistically significant differences in the univariate analysis results were taken as independent variables. Costs were log-transformed and included as dependent variables in the QR to analyze the influencing factors, and the 10%, 50%, and 90% quantiles of hospitalization costs were selected for QR analysis. The results were imported into the CHAID decision tree model to establish the grouping model of hospitalization costs.

## RESULTS

### General information

Of the 3362 inpatients with complete data, 1218 (36.2%) were male and 2144 (63.8%) were female. The average age was  $74 \pm 9$  years, and the average LOS was 14 d. There were 2644 (78.6%) urban residents and 718 (21.4%) rural residents. A total of 1388 (41.3%) cases were admitted from the emergency department, 1714 (51.0%) cases were admitted from the outpatient department, 256 (7.6%) cases were transferred to the hospital, and 4 (0.1%) cases were admitted to the hospital by other means.

### Composition of inpatient hospitalization costs

The total hospitalization cost for these patients ( $n = 3362$ ) was 180479203.03 RMB, and the cost for each patient was 117.00-634774.25 [ $M = 44788.30$  ( $P_{25} = 18870.67$ ,  $P_{75} = 65783.72$ )] RMB. Medical material costs were the highest component of the total hospitalization cost, followed (in order) by drug costs, test costs, treatment costs, integrated medical service costs and blood transfusion costs (Table 1). A total of 92039709.52 RMB was reimbursed by medical benefit funds, accounting for 51.0% of the total costs. The reimbursement amount per case ranged from 0.000-621697.62 [ $M = 15264.22$  ( $P_{25} = 4308.38$ ,  $P_{75} = 36228.40$ )] RMB.

### Single-factor analysis

The univariate analysis results in Table 2 show that gender, age, operation times, LOS, payment method, wound position, wound type and operation type had a significant impact on total hospitalization cost ( $P < 0.05$ ).

### QR analysis

Based on the univariate analysis results, gender, age, LOS, payment method, wound position, wound type, operation times, and operation type were selected as independent variables for inclusion in the model.

As shown in Table 3, the pseudo  $R^2$  of the three quantiles decreased from 0.5467 to

**Table 1** Cost structure of elderly inpatients due to falls (RMB)

Component	Frequency (n)	Estimated cost (RMB)	Percentage of total cost (%)
Medical material	3158	75206147.24	41.7
Medicine	3315	29348327.34	16.3
Tests	3354	29158384.41	16.1
Treatment	3123	24439465.13	13.5
Integrated medical services	3362	19654703.83	10.9
Blood transfusion	922	2672175.08	1.5

All costs are expressed in 2019 RMB.

0.3848, indicating that the fitting results of the model were optimal at the 10% quantile. The coefficient changes in factors with a significant influence at the 10%, 50% and 90% quantiles of hospitalization cost are shown in [Figure 2](#).

Patient LOS and operation type had a significant impact on the three quantiles of total hospitalization cost ( $P < 0.05$ ), and the influence of patient LOS and operation times at the highest quantile was greater than that at the lowest quantile. Regarding operation type, the hospitalization costs for surgical exploration, open reduction, replacement and decompression were significantly higher at the 10% quantile than for patients without surgery. The costs for patients with debridement and suturing and other types of surgery were significantly higher at the 50% quantile ( $P < 0.05$ ). The hospitalization costs for patients with fixation were significantly lower at the 90% quantile ( $P < 0.05$ ). The influence of age at the low quantile of cost was greater than that at the middle quantile. The hospitalization costs for female patients were significantly higher than those for male patients at the 90% quantile ( $P < 0.05$ ). Patients who chose to use commercial medical insurance and public medical care for reimbursement paid lower hospitalization costs than those who chose to use worker medical insurance at the 90% and 10% quantiles, respectively. Regarding wound position, the costs for patients with trunk, upper limb, head and neck, organ, spinal cord and lower limb injuries were significantly higher at the 90% quantile than for those without injuries ( $P < 0.05$ ). The wound type had a significant positive effect at the 10% quantile of costs ( $P < 0.05$ ).

### Hospitalization cost grouping

We constructed and conducted branch reduction on the decision tree model using the CHAID algorithm<sup>[16]</sup>. Inpatient hospitalization costs were taken as the dependent variable, and age, gender, operation times, LOS, payment method, wound position, wound type and operation type were used as classification nodes. The parameters used in this study were as follows: The maximum depth of the decision tree was 5; the minimum sample number of the parent node was 200; the minimum sample number of the child node was 100; and the significance level of the splitting node was  $\alpha = 0.05$ <sup>[17]</sup>. The grouping results are shown in [Figure 3](#).

Based on the decision tree analysis, 5 variables, including age, LOS, operation type, wound position and wound type, were finally determined. Patients who had debridement and suturing, surgical exploration or other operations and who stayed in the hospital for more than 15 d had the highest hospitalization costs, while the costs for those who had fixation or no operation, stayed in the hospital for less than 14 d, and had trunk, prosthesis, spinal cord or no injuries were the lowest. The between-group hypothesis test ( $P < 0.05$ ) indicated that the cost difference between the groups was relatively large and the within-group variation in hospitalization costs was relatively small, demonstrating that the grouping of the model was reasonable.

## DISCUSSION

This study found that hospitalization costs resulting from falls totaled more than 100 million RMB, and the reimbursement rate of medical insurance funds exceeded 50%. The costs of falls among elderly Chinese patients were lower than those reported in high-income countries. A recent study in Texas reported that the cost of falls for

**Table 2 Univariate analysis of the hospitalization costs for elderly inpatients due to falls (RMB)**

Variable	Frequency (n)	Percentage of total cases (%)	Estimated cost [M (P <sub>25</sub> , P <sub>75</sub> )]	R value	P value
Gender				0.037	0.032 <sup>a</sup>
Male	1218	36.2	41317.97 (14486.61, 66018.59)		
Female	2144	63.8	45469.65 (23487.13, 65686.64)		
Age (yr)				0.060	0.000 <sup>a</sup>
60-69	1221	36.3	42378.54 (21803.38, 62729.14)		
70-79	1052	31.3	42991.27 (19400.01, 63875.40)		
≥ 80	1089	32.4	51642.56 (16687.27, 69590.67)		
Operation times				0.533	0.000 <sup>a</sup>
0 (h)	672	20.0	10026.07 (5212.80, 21657.76)		
1-2	2456	73.0	50940.59 (32230.26, 67879.28)		
3-5	234	7.0	76253.72 (44619.24, 110755.35)		
LOS (d)				0.520	0.000 <sup>a</sup>
0-14	2410	71.7	36806.75 (11381.93, 53622.53)		
15-30	721	21.4	66957.46 (50485.18, 83432.30)		
31-90	198	5.9	106569.47 (75836.07, 144853.33)		
≥ 91	33	1.0	137591.53 (69378.56, 223584.67)		
Payment method				-0.051	0.003 <sup>a</sup>
Worker medical insurance	2022	60.1	44952.14 (21700.61, 66985.45)		
Resident medical insurance	1050	31.4	44962.41 (16506.52, 64478.55)		
Commercial medical insurance	1	0.0	1562060.23		
Individual medical care	4	0.1	35922.53 (28653.18, 113184.59)		
Public medical care	280	8.3	41233.85 (9716.64, 63933.44)		
Other	5	0.1	56320.25 (35953.57, 157804.79)		
Wound position				0.267	0.000 <sup>a</sup>
None	2	0.0	11198.42 (5451.68, 0.00)		
Trunk	135	4.0	26295.28 (8463.58, 65953.88)		
Upper limbs	394	11.7	39361.70 (8891.22, 54170.21)		
Head and neck	434	12.9	20706.67 (9742.51, 42939.47)		
Prosthesis	7	0.2	43500.02 (11673.20, 115267.90)		
Organ	42	1.3	28087.94 (12783.60, 67501.29)		
Spinal cord	736	21.9	41242.70 (26249.93, 52136.72)		
Lower limbs	1612	48.0	29935.61 (57052.51, 72001.03)		
Wound type				0.264	0.000 <sup>a</sup>
Dislocation	39	1.2	10786.93 (6307.10, 39300.03)		
Contusion	216	6.4	13295.61 (7904.67, 25306.53)		
Soft tissue injury	63	1.9	21142.78 (8768.91, 40579.88)		
Joint injury	143	4.2	18130.31 (10022.10, 53393.29)		
Visceral rupture	40	1.2	36412.73 (12834.19, 57043.39)		
Fracture	2831	84.2	48665.48 (26412.69, 68.344)		
Other	30	0.9	12262.80 (5962.26, 46411.80)		
Operation type				0.642	

None	673	20.0	5223.96 (10030.03, 21687.66)	0.000 <sup>a</sup>
Fixation	271	8.0	5603.54 (9215.08, 16469.74)	
Debridement and suturing	194	5.8	16671.87 (52139.40, 90254.74)	
Surgical exploration	117	3.5	19388.44 (29844.72, 52741.55)	
Open reduction	1296	38.5	37836.56 (46549.68, 62950.43)	
Replacement	682	20.3	57135.64 (67049.09, 79342.16)	
Decompression	56	1.7	63967.42 (85712.16, 108458.43)	
Other	73	2.2	11879.72 (36707.28, 93072.05)	

All costs are expressed in 2019 RMB.

<sup>a</sup> $P < 0.05$ .

people aged over 65 was greater than US \$1.1 billion<sup>[18]</sup>. A study conducted in the United States showed that the average hospitalization cost for falls was US \$29562<sup>[12]</sup>, while in Canada the mean cost for hip fracture patients older than 50 was US \$19743<sup>[19]</sup>. This lower amount may be due to differences in medical costs between the countries and differences in the quality of health care. The medical cost of falls is an avoidable expense because falls cause avoidable accidental injuries. Measures to support fall prevention are beneficial for reducing this unnecessary economic burden.

Among the hospitalization costs for elderly patients due to falls, medical material costs accounted for the highest proportion (41.7%), which might be related to the large number of patients in this study with fracture injuries. Surgery was the main method of treatment for fracture injuries, and internal fixation devices or joint prostheses were frequently used. These materials are expensive and thus inevitably drive up hospitalization costs. To reduce the economic burden of patients with fall injuries, it is necessary to strengthen the management of high-value medical materials and advocate choosing cost-effective materials without affecting patient safety.

Although many developed countries have conducted relevant studies on the hospitalization costs of falls<sup>[9,10,18,20-22]</sup>, there are few statistical analyses of the influencing factors of such hospitalization costs. Understanding the influencing factors of these costs will help governments improve the cost management system.

In addition to investigating the economic burden caused by falls, QR analysis and grouping model construction for hospitalization costs were conducted to determine the influencing factors.

The QR results showed that operation times, LOS and gender had a significant positive effect in the group with higher expenses. In a prior analysis by Wiktorowicz *et al*<sup>[19]</sup>, the cost varied depending on the context of a patient's place of residence, age, and survival to 1 year. We found that more women than men were hospitalized due to falls. Studies have reported that the risk of falls differs by gender, and women are more likely to fall than men<sup>[23,24]</sup>, which might be related to the more rapid loss of muscle strength in women.

The cost for patients with worker medical insurance was higher than that for patients with commercial or public medical insurance in the different quantiles, which might be associated with the high reimbursement rate of worker medical insurance in China. The high reimbursement rate indirectly increases the treatment demand.

Age had a greater impact on people with low costs. This could be because people with low costs may pay less attention to their health in daily life than people with high costs. The influence of age on medical costs was closely related to the patient's health condition, and improving the health condition can obviously reduce the incidence of disease and medical consumption caused by age. Thus, it is necessary to strengthen disease prevention and treatment.

The position and type of wound had an impact on the different cost quantiles. Hall *et al* also showed that the type of injury was the most significant determinant of hospital costs. These findings indicate that fall prevention measures should consider how to reduce the extent of a patient's injuries. For example, people may be able to reduce the severity of injury by wearing a protective device should a fall occur.

Our study revealed that all types of surgery, except fixation, had a significant positive effect on the total cost. Complex surgery not only increases the use of medical materials but also increases the LOS due to a complicated postoperative recovery. Therefore, promoting enhanced recovery after surgery would be very effective in

**Table 3** Quantile regression analysis of hospitalization costs

Variable	Hospitalization costs		
	Q10	Q50	Q90
Operations times	0.038	0.067 <sup>b</sup>	0.133 <sup>b</sup>
LOS	0.162 <sup>b</sup>	0.174 <sup>b</sup>	0.228 <sup>b</sup>
Age	0.038 <sup>b</sup>	0.018 <sup>b</sup>	0.003
Gender (Contrast = Male)			
Female	0.01	0.018	0.026 <sup>a</sup>
Payment methods (Contrast = Worker medical insurance)			
Resident medical insurance	0.005	0.007	-0.008
Commercial medical insurance	-0.35	-0.751 <sup>b</sup>	-1.185 <sup>b</sup>
Individual medical care	0.176	0.034	-0.017
Public medical care	-0.184 <sup>b</sup>	-0.019	0.006
Other	-0.057	0.054	-0.107
Wound position (Contrast = None)			
Trunk	-0.277	0.063	0.646 <sup>b</sup>
Upper limbs	-0.393	-0.066	0.502 <sup>a</sup>
Head and neck	-0.117	0.317	0.763 <sup>b</sup>
Prosthesis	-0.227	0.049	0.500
Organ	-0.314	0.2	0.760 <sup>b</sup>
Spinal cord	-0.342	-0.037	0.497 <sup>a</sup>
Lower limbs	-0.305	0.022	0.584 <sup>a</sup>
Wound type (Contrast = Dislocation)			
Contusion	0.890 <sup>b</sup>	-0.153 <sup>a</sup>	-0.187 <sup>a</sup>
Soft tissue injury	0.942 <sup>b</sup>	-0.052	-0.08
Joint injury	0.757 <sup>b</sup>	-0.06	-0.112
Visceral rupture	0.851 <sup>b</sup>	0.015	0.047
Fracture	0.900 <sup>b</sup>	0.068	-0.006
Other	0.735 <sup>b</sup>	-0.162 <sup>a</sup>	-0.025
Operation type (Contrast = None)			
Fixation	-0.024	-0.071 <sup>a</sup>	-0.209 <sup>b</sup>
Debridement and suturing	0.523 <sup>b</sup>	0.704 <sup>b</sup>	0.480 <sup>b</sup>
Surgical exploration	0.413 <sup>b</sup>	0.317 <sup>b</sup>	0.202 <sup>b</sup>
Open reduction	0.883 <sup>b</sup>	0.666 <sup>b</sup>	0.319 <sup>b</sup>
Replacement	1.023 <sup>b</sup>	0.717 <sup>b</sup>	0.355 <sup>b</sup>
Decompression	1.100 <sup>b</sup>	0.837 <sup>b</sup>	0.608 <sup>b</sup>
Other	0.276 <sup>b</sup>	0.452 <sup>b</sup>	0.286 <sup>b</sup>
Pseudo $R^2$	0.5467	0.4767	0.3848

<sup>a</sup> $P < 0.05$ .<sup>b</sup> $P < 0.01$ . LOS: Length of stay.

reducing hospitalization costs at the high, medium and low quantiles<sup>[25,26]</sup>.

Based on QR analysis, statistically significant variables were included in the CHAID decision tree analysis. The decision tree's predictive risk score was found to be 0.071. The cost grouping model could clearly and intuitively reflect the influencing factors of cost. These findings provide guidance for relevant departments to formulate targeted improvement measures that could help to reduce the economic burden of disease. They also provide a reference value for improving medical insurance payment standards.

### ***Limitations of the study***

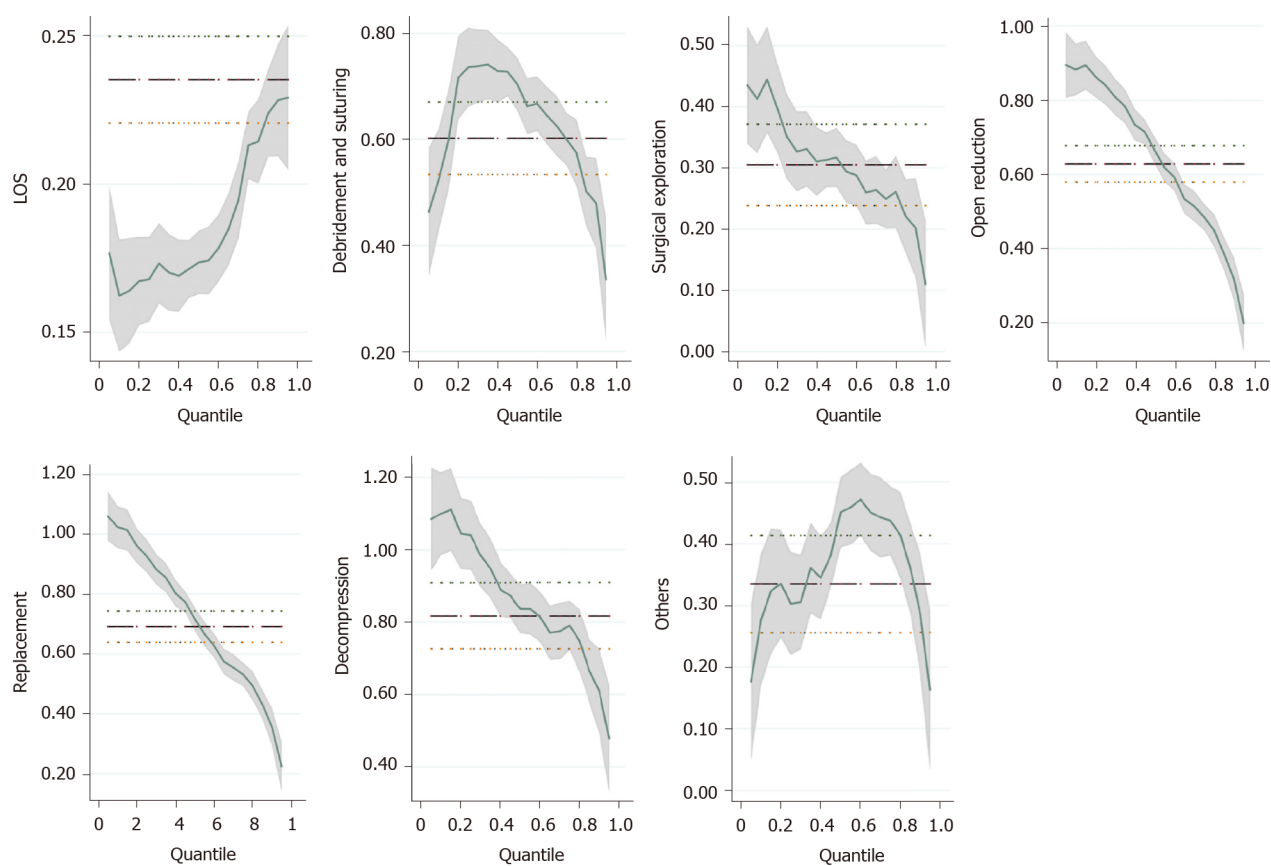
In this study, the economic burden estimation followed the principle of robust estimation, measuring direct medical costs. However, some patients did not complete all of their treatment due to economic disadvantages, complicated diseases or other conditions during hospitalization; therefore, the actual costs are likely higher.

---

## **CONCLUSION**

---

This study discusses the medical economic burden caused by falls. Although falls are avoidable, the medical costs due to falls are expensive, and the reimbursement rate of medical benefit funds is high. The economic benefits of prevention far outweigh those of treatment. The grouping model of fall hospitalization expenses constructed in this study provides a reference for identifying key points of cost management and control.



**Figure 2 Coefficient curves in the quantile regression analysis.** The factors with significant influence at 10%, 50% and 90% quantiles of hospitalization expenses were selected for plotting. LOS: Length of stay.



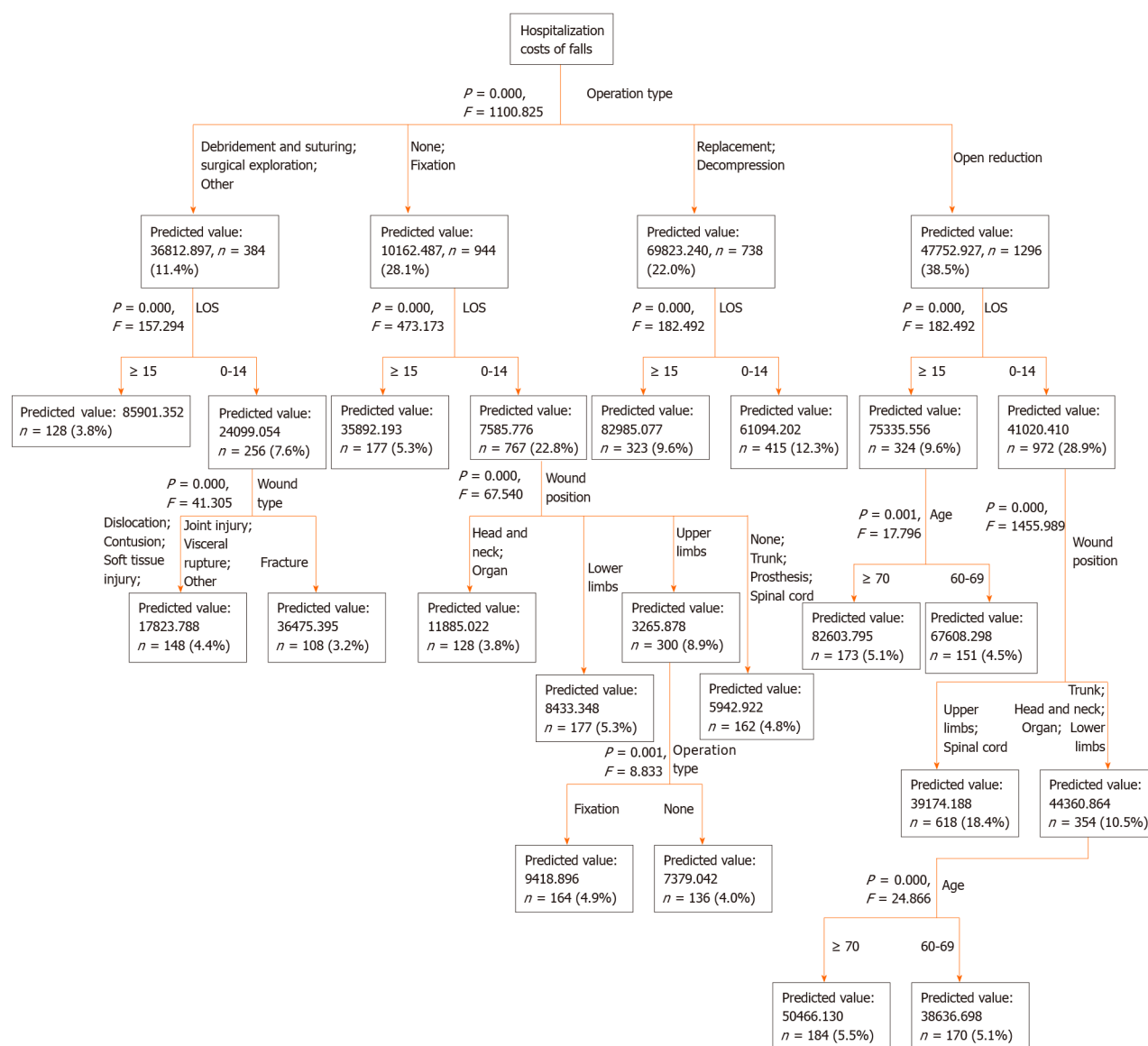


Figure 3 Grouping results based on the decision tree model. LOS: Length of stay.

## ARTICLE HIGHLIGHTS

### Research background

With the aging world population the incidence of falls has intensified and hospitalization costs are increasing. Falls are one type of event studied in the health economics of patient safety.

### Research motivation

Many developed countries have conducted research on fall-related hospitalization costs. However, China, a developing country, still lacks large-sample studies.

### Research objectives

The aim of the study was to investigate the composition and factors related to the hospitalization costs of fall-related injuries in elderly inpatients and establish factor-based, cost-related groupings to provide a basis for the rational economic control of hospitalization costs.

### Research methods

Quantile regression (QR) analysis was used to identify the factors related to fall-related hospitalization costs. A decision tree model based on the chi-squared automatic interaction detector algorithm for hospitalization cost grouping was built by

setting the factors in the regression results as separation nodes.

### Research results

The total hospitalization cost of fall-related injuries in the elderly patients investigated was 180479203.03 RMB. The cost grouping model was established based on the QR results, and patient age, length of stay, operation type, wound position and wound type were the most important influencing factors in the model.

### Research conclusions

Our grouping model of hospitalization costs clearly reflects the key factors affecting hospitalization costs and is meaningful for strengthening the reasonable control of these costs.

### Research perspectives

This was a retrospective study; hence, a prospective large-scale multicenter study is still required.

## ACKNOWLEDGEMENTS

We are grateful to the medical insurance information center, the medical record management center and the hospital information center of The First Affiliated Hospital of Chongqing Medical University and the Jinshan Branch of the First Affiliated Hospital of Chongqing Medical University for their help.

## REFERENCES

- 1 **Peng K**, Tian M, Andersen M, Zhang J, Liu Y, Wang Q, Lindley R, Ivers R. Incidence, risk factors and economic burden of fall-related injuries in older Chinese people: a systematic review. *Inj Prev* 2019; **25**: 4-12 [PMID: 30670560 DOI: 10.1136/injuryprev-2018-042982]
- 2 **Khow KSF**, Visvanathan R. Falls in the Aging Population. *Clin Geriatr Med* 2017; **33**: 357-368 [PMID: 28689568 DOI: 10.1016/j.cger.2017.03.002]
- 3 **Hao X**, Yang Y, Gao X, Dai T. Evaluating the Effectiveness of the Health Management Program for the Elderly on Health-Related Quality of Life among Elderly People in China: Findings from the China Health and Retirement Longitudinal Study. *Int J Environ Res Public Health* 2019; **16** [PMID: 30609852 DOI: 10.3390/ijerph16010113]
- 4 **Cheng P**, Wang L, Ning P, Yin P, Schwebel DC, Liu J, Qi J, Hu G, Zhou M. Unintentional falls mortality in China, 2006-2016. *J Glob Health* 2019; **9**: 010603 [PMID: 30992985 DOI: 10.7189/jogh.09.010603]
- 5 **Carpenter CR**, Cameron A, Ganz DA, Liu S. Older Adult Falls in Emergency Medicine: 2019 Update. *Clin Geriatr Med* 2019; **35**: 205-219 [PMID: 30929883 DOI: 10.1016/j.cger.2019.01.009]
- 6 **World Health Organization**. Injuries and violence: the facts. 2014. Cited 1 August 2020 Available from: <https://apps.who.int/iris/handle/10665/149798>
- 7 **Saftari LN**, Kwon OS. Ageing vision and falls: a review. *J Physiol Anthropol* 2018; **37**: 11 [PMID: 29685171 DOI: 10.1186/s40101-018-0170-1]
- 8 **Gilbert R**, Todd C, May M, Yardley L, Ben-Shlomo Y. Socio-demographic factors predict the likelihood of not returning home after hospital admission following a fall. *J Public Health (Oxf)* 2010; **32**: 117-124 [PMID: 19666689 DOI: 10.1093/pubmed/fdp077]
- 9 **McMurdo ME**. 'Guideline for the prevention of falls in older persons': essential reading. *Age Ageing* 2002; **31**: 13-14 [PMID: 11850302 DOI: 10.1093/ageing/31.1.13]
- 10 **Mills KM**, Sadler S, Peterson K, Pang L. An Economic Evaluation of Preventing Falls Using a New Exercise Program in Institutionalized Elderly. *J Phys Act Health* 2018; **15**: 397-402 [PMID: 29543112 DOI: 10.1123/jpah.2017-0225]
- 11 **Slawomirski L**, Aaraaen A, Klazinga NS. The economics of patient safety: Strengthening a value-based approach to reducing patient harm at national level. 2017. Available from: OECD Health Working Papers: No. 96 [DOI: 10.1787/5a9858cd-en]
- 12 **Florence CS**, Bergen G, Atherly A, Burns E, Stevens J, Drake C. Medical Costs of Fatal and Nonfatal Falls in Older Adults. *J Am Geriatr Soc* 2018; **66**: 693-698 [PMID: 29512120 DOI: 10.1111/jgs.15304]
- 13 **Burns ER**, Stevens JA, Lee R. The direct costs of fatal and non-fatal falls among older adults - United States. *J Safety Res* 2016; **58**: 99-103 [PMID: 27620939 DOI: 10.1016/j.jsr.2016.05.001]
- 14 **Haddad YK**, Bergen G, Florence CS. Estimating the Economic Burden Related to Older Adult Falls by State. *J Public Health Manag Pract* 2019; **25**: E17-E24 [PMID: 29757813 DOI: 10.1097/PHH.0000000000000816]

- 15 **National Bureau of Statistics, PRC.** 2019, September 12. Cited 1 August 2020 Available from: <http://data.stats.gov.cn>
- 16 **Li H, Wu TT, Yang DL, Guo YS, Liu PC, Chen Y, Xiao LP.** Decision tree model for predicting in-hospital cardiac arrest among patients admitted with acute coronary syndrome. *Clin Cardiol* 2019; **42**: 1087-1093 [PMID: [31509271](#) DOI: [10.1002/clc.23255](#)]
- 17 **Wu SW, Pan Q, Chen T.** Research on diagnosis-related group grouping of inpatient medical expenditure in colorectal cancer patients based on a decision tree model. *World J Clin Cases* 2020; **8**: 2484-2493 [PMID: [32607325](#) DOI: [10.12998/wjcc.v8.i12.2484](#)]
- 18 **Towne SD, Smith ML, Li Y, Dowdy D, Ahn S, Lee S, Yoshikawa A, Jiang L.** A Multi-Level Analyses of Charges and Cost of Fall-Related Hospitalizations Among Older Adults: Individual, Hospital, and Geospatial Variation. *J Aging Soc Policy* 2020; 1-22 [PMID: [32202228](#) DOI: [10.1080/08959420.2020.1740639](#)]
- 19 **Wiktorowicz ME, Goeree R, Papaioannou A, Adachi JD, Papadimitropoulos E.** Economic implications of hip fracture: health service use, institutional care and cost in Canada. *Osteoporos Int* 2001; **12**: 271-278 [PMID: [11420776](#) DOI: [10.1007/s001980170116](#)]
- 20 **DeGrauw X, Annett JL, Stevens JA, Xu L, Coronado V.** Unintentional injuries treated in hospital emergency departments among persons aged 65 years and older, United States, 2006-2011. *J Safety Res* 2016; **56**: 105-109 [PMID: [26875172](#) DOI: [10.1016/j.jsr.2015.11.002](#)]
- 21 **Hartholt KA, Polinder S, Van der Cammen TJ, Panneman MJ, Van der Velde N, Van Lieshout EM, Patka P, Van Beeck EF.** Costs of falls in an ageing population: a nationwide study from the Netherlands (2007-2009). *Injury* 2012; **43**: 1199-1203 [PMID: [22541759](#) DOI: [10.1016/j.injury.2012.03.033](#)]
- 22 **Heinrich S, Rapp K, Rissmann U, Becker C, König HH.** Service use and costs of incident femoral fractures in nursing home residents in Germany: the Bavarian Fall and Fracture Prevention Project (BF2P2). *J Am Med Dir Assoc* 2011; **12**: 459-466 [PMID: [21450261](#) DOI: [10.1016/j.jamda.2010.11.008](#)]
- 23 **Hoang OT, Jullamate P, Piphatvanitcha N, Rosenberg E.** Factors related to fear of falling among community-dwelling older adults. *J Clin Nurs* 2017; **26**: 68-76 [PMID: [27723217](#) DOI: [10.1111/jocn.13337](#)]
- 24 **Kwan MM, Close JC, Wong AK, Lord SR.** Falls incidence, risk factors, and consequences in Chinese older people: a systematic review. *J Am Geriatr Soc* 2011; **59**: 536-543 [PMID: [21361880](#) DOI: [10.1111/j.1532-5415.2010.03286.x](#)]
- 25 **Quack V, Ippendorf AV, Betsch M, Schenker H, Nebelung S, Rath B, Tingart M, Lüring C.** [Multidisciplinary Rehabilitation and Fast-track Rehabilitation after Knee Replacement: Faster, Better, Cheaper? *Rehabilitation (Stuttg)* 2015; **54**: 245-251 [PMID: [26317840](#) DOI: [10.1055/s-0035-1555887](#)]
- 26 **Elsarrag M, Soldozy S, Patel P, Norat P, Sokolowski JD, Park MS, Tvrdik P, Kalani MYS.** Enhanced recovery after spine surgery: a systematic review. *Neurosurg Focus* 2019; **46**: E3 [PMID: [30933920](#) DOI: [10.3171/2019.1.FOCUS18700](#)]



Published by **Baishideng Publishing Group Inc**  
7041 Koll Center Parkway, Suite 160, Pleasanton, CA 94566, USA

**Telephone:** +1-925-3991568

**E-mail:** [bpgoffice@wjgnet.com](mailto:bpgoffice@wjgnet.com)

**Help Desk:** <https://www.f6publishing.com/helpdesk>

<https://www.wjgnet.com>

