

## Match Overview

- 1 **Crossref** 17 words  
Kristofer M. Charlton-Ouw, Harleen K. Sandhu, Samuel S. L. eake, Charles C. Miller et al. "New type A dissection after e..." 1%
- 2 **Crossref** 14 words  
Antoine Decroix, Hendrik Van Damme, Etienne Creemers, Jean-Olivier Defraigne. "New Type A Aortic Dissection after ..." 1%

1 **Title**  
2 Type A aortic dissection developed after type B dissection with a presentation of shoulder pain: a  
3 case report  
4 **Running title**  
5 An aortic dissection patient with shoulder pain  
6  
7 **Authors**  
8 Xinbo Yin B.S.  
9 Xiaokai Wang M.D.  
10 Su Xu, D.D.S.  
11 **Abstract**  
12 **BACKGROUND**  
13 Aortic dissection (AD) is a life-threatening condition with a high mortality rate without immediate  
14 medical attention. Early diagnosis and appropriate treatment are critical in treating patients with AD.  
15 In the emergency department (ED), patients with AD commonly present with classic symptoms of  
16 unanticipated severe chest or back pain. However, it is worth noting that atypical symptoms of AD



Type A aortic dissection developed after existing type B aortic disse



ALL

IMAGES

VIDEOS

2,860 Results

Any time ▼

## New type A dissection after acute type B aortic dissection ...

[https://www.jvascsurg.org/article/S0741-5214\(17\)31756-1/fulltext](https://www.jvascsurg.org/article/S0741-5214(17)31756-1/fulltext)

Aug 17, 2017 · **Aortic dissection** is a dynamic process that can progress both proximal and distal to the initial entry tear. We sought to determine associations for development of proximal progression or new **type A aortic dissection** (NTAD) **after** acute **type B dissection** ...

Cited by: 3

Author: Kristofer M. Charlton-Ouw, Kristofer M. Cha...

Publish Year: 2018

## New type A dissection after acute type B aortic dissection ...

<https://www.sciencedirect.com/science/article/pii/S0741521417317561>

Jan 01, 2018 · Objective. **Aortic dissection** is a dynamic process that can progress both proximal and distal to the initial entry tear. We sought to determine associations for development of proximal progression or new **type A aortic dissection** (NTAD) **after** acute **type B dissection** (ATBD) and its effect on survival of the patient.

Cited by: 3

Author: Kristofer M. Charlton-Ouw, Kristofer M. Cha...

Publish Year: 2018

## Case Report: More than just muscle spasms: a rare ...

<https://www.ncbi.nlm.nih.gov/pmc/articles/PMC5372135>

Discussion. The typical **clinical** manifestations of **aortic dissection** are severe chest, abdominal or back **pain**. Most patients with Stanford **type A dissection** (ascending aorta **dissection**) present with anterior chest **pain**, where those with **type B** (descending aorta **dissection**) present with abdominal and back **pain**.  
4 In some cases, typical symptoms reported above may be suggestive of myocardial ...

Author: Ebisa Bekele, Deepthi Chaitanya Kagola...

Publish Year: 2017



Type A aortic dissection developed after type B dissection with a pr



Sign in



ALL

IMAGES

VIDEOS

43,300 Results

Any time ▾

## [Aortic Dissection - Type A And B - Symptoms, Causes, Treatment](https://healthjade.net/aortic-dissection)

<https://healthjade.net/aortic-dissection> ▾

**Type B aortic dissection** – The descending aorta is involved (DeBakey **type III**) This system also helps delineate treatment. **Type A aortic** dissections usually must be treated surgically, whereas **type B aortic** dissections are managed medically under most conditions 9) .

## [New type A dissection after acute type B aortic dissection ...](https://www.sciencedirect.com/science/article/pii/S0741521417317561)

<https://www.sciencedirect.com/science/article/pii/S0741521417317561>

Jan 01, 2018 · Objective. **Aortic dissection** is a dynamic process that can progress both proximal and distal to the initial entry tear. We sought to determine associations for development of proximal progression or new **type A aortic dissection (NTAD)** after acute **type B dissection (ATBD)** and its effect on survival of the patient.

Cited by: 3

Author: Kristofer M. Charlton-Ouw, Kristofer M. Cha...

Publish Year: 2018

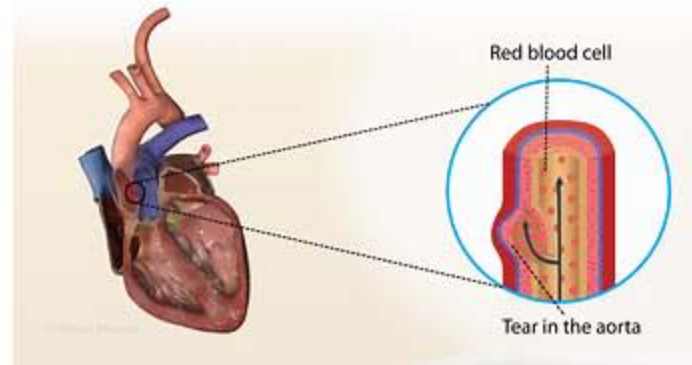
## [Types of Aortic Dissection | NYU Langone Health](https://nyulangone.org/conditions/aortic-dissection-in-adults/types)

<https://nyulangone.org/conditions/aortic-dissection-in-adults/types> ▾

## Aortic Dissection

Medical Condition

Symptoms include sudden, severe chest or upper back pain



A tear in the inner layer of the aorta, the large blood vessel of the heart.

Rare (Fewer than 200,000 cases per year in US)



ALL IMAGES VIDEOS MAPS NEWS SHOPPING

41,600 Results Any time

[Aortic Dissection - Type A And B - Symptoms, Causes, Treatment](https://healthjade.net/aortic-dissection)  
<https://healthjade.net/aortic-dissection>

**Type B aortic dissection** – The descending aorta is involved (DeBakey **type III**) This system also helps delineate treatment. **Type A aortic** dissections usually must be treated surgically, whereas **type B aortic** dissections are managed medically under most conditions 9) .

[New type A dissection after acute type B aortic dissection ...](https://www.sciencedirect.com/science/article/pii/S0741521417317561)  
<https://www.sciencedirect.com/science/article/pii/S0741521417317561>

Jan 01, 2018 · Objective. **Aortic dissection** is a dynamic process that can progress both proximal and distal to the initial entry tear. We sought to determine associations for development of proximal progression or new **type A aortic dissection (NTAD)** after acute **type B dissection (ATBD)** and its effect on survival of the patient.

Cited by: 3 Author: Kristofer M. Charlton-Ouw, Kristofer M. Cha...

Publish Year: 2018

[Types of Aortic Dissection | NYU Langone Health](https://nyulangone.org/conditions/aortic-dissection-in-adults/types)  
<https://nyulangone.org/conditions/aortic-dissection-in-adults/types>

< Structure Pathophysiology Causes Prognosis Diagnosis >

The aorta a candy caneshaped blood vessel originating in the chest at the top of the heart and extending into the abdomen is the largest artery in the body. Like other arteries, it carries oxygen-rich blood from the heart to the rest of the body. The walls of the aorta consist of three layers that give it strength.

See more on nyulangone.org

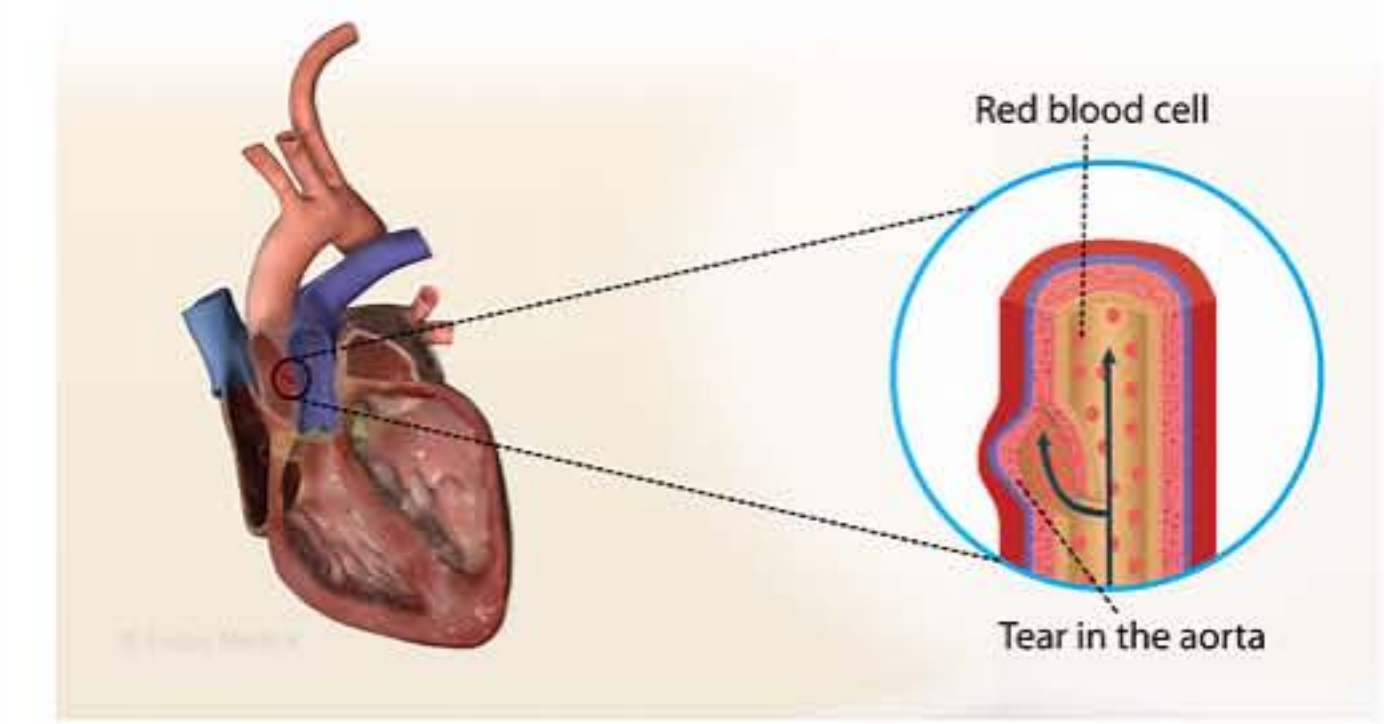
PEOPLE ALSO ASK

- What is a type B aortic dissection? ▾
- Can type B aortic dissection cause elevated blood pressure? ▾

# Aortic Dissection

Medical Condition

Symptoms include sudden, severe chest or upper back pain



A tear in the inner layer of the aorta, the large blood vessel of the heart.

- Rare (Fewer than 200,000 cases per year in US)
- Requires lab test or imaging
- Treatment from medical professional advised
- Can last several days or weeks

Aortic dissection results from high blood pressure that puts stress on weakened areas of the aortic wall causing tearing. Sudden chest pain radiating to the neck, sudden upper back pain radiating down the back and walking difficulties are some symptoms. Treatment includes medication and surgery.

## Symptoms

Symptoms are similar to other heart problems such as heart attack. They include: