

World Journal of *Gastroenterology*

World J Gastroenterol 2021 February 21; 27(7): 545-665



REVIEW

- 545 *Helicobacter pylori*: Commensal, symbiont or pathogen?
Reshetnyak VI, Burmistrov AI, Maev IV
- 561 Digestive system involvement of infections with SARS-CoV-2 and other coronaviruses: Clinical manifestations and potential mechanisms
Zhan GF, Wang Y, Yang N, Luo AL, Li SY

ORIGINAL ARTICLE

Basic Study

- 576 Xiangbinfang granules enhance gastric antrum motility *via* intramuscular interstitial cells of Cajal in mice
Chen QC, Jiang Z, Zhang JH, Cao LX, Chen ZQ
- 592 Sinapic acid ameliorates D-galactosamine/lipopolysaccharide-induced fulminant hepatitis in rats: Role of nuclear factor erythroid-related factor 2/heme oxygenase-1 pathways
Ansari MA, Raish M, Bin Jordan YA, Ahmad A, Shahid M, Ahmad SF, Haq N, Khan MR, Bakheet SA

Clinical and Translational Research

- 609 Quantitative multiparametric magnetic resonance imaging can aid non-alcoholic steatohepatitis diagnosis in a Japanese cohort
Imajo K, Tetlow L, Dennis A, Shumbayawonda E, Mouchti S, Kendall TJ, Fryer E, Yamanaka S, Honda Y, Kessoku T, Ogawa Y, Yoneda M, Saito S, Kelly C, Kelly MD, Banerjee R, Nakajima A

Retrospective Study

- 624 Clinicopathological features and prognostic factors associated with gastroenteropancreatic mixed neuroendocrine non-neuroendocrine neoplasms in Chinese patients
Huang YC, Yang NN, Chen HC, Huang YL, Yan WT, Yang RX, Li N, Zhang S, Yang PP, Feng ZZ
- 641 Effect of liver inflammation on accuracy of FibroScan device in assessing liver fibrosis stage in patients with chronic hepatitis B virus infection
Huang LL, Yu XP, Li JL, Lin HM, Kang NL, Jiang JJ, Zhu YY, Liu YR, Zeng DW

Clinical Trials Study

- 654 Simultaneous partial splenectomy during liver transplantation for advanced cirrhosis patients combined with severe splenomegaly and hypersplenism
Jiang WT, Yang J, Xie Y, Guo QJ, Tian DZ, Li JJ, Shen ZY

ABOUT COVER

Emilio De Raffele, MD, PhD, Consultant Surgeon, Division of Pancreatic Surgery, Department of Digestive Diseases, Azienda Ospedaliero-Universitaria di Bologna, IRCCS, Policlinico S.Orsola-Malpighi, Università degli Studi di Bologna, Via Albertoni 15, Bologna 40138, Italy. e.deraffele@aosp.bo.it

AIMS AND SCOPE

The primary aim of *World Journal of Gastroenterology* (WJG, *World J Gastroenterol*) is to provide scholars and readers from various fields of gastroenterology and hepatology with a platform to publish high-quality basic and clinical research articles and communicate their research findings online. WJG mainly publishes articles reporting research results and findings obtained in the field of gastroenterology and hepatology and covering a wide range of topics including gastroenterology, hepatology, gastrointestinal endoscopy, gastrointestinal surgery, gastrointestinal oncology, and pediatric gastroenterology.

INDEXING/ABSTRACTING

The WJG is now indexed in Current Contents®/Clinical Medicine, Science Citation Index Expanded (also known as SciSearch®), Journal Citation Reports®, Index Medicus, MEDLINE, PubMed, PubMed Central, and Scopus. The 2020 edition of Journal Citation Report® cites the 2019 impact factor (IF) for WJG as 3.665; IF without journal self cites: 3.534; 5-year IF: 4.048; Ranking: 35 among 88 journals in gastroenterology and hepatology; and Quartile category: Q2. The WJG's CiteScore for 2019 is 7.1 and Scopus CiteScore rank 2019: Gastroenterology is 17/137.

RESPONSIBLE EDITORS FOR THIS ISSUE

Production Editor: *Yan-Jie Ma*; Production Department Director: *Xiang Li*; Editorial Office Director: *Ze-Mao Gong*.

NAME OF JOURNAL

World Journal of Gastroenterology

ISSN

ISSN 1007-9327 (print) ISSN 2219-2840 (online)

LAUNCH DATE

October 1, 1995

FREQUENCY

Weekly

EDITORS-IN-CHIEF

Andrzej S Tarnawski, Subrata Ghosh

EDITORIAL BOARD MEMBERS

<http://www.wjgnet.com/1007-9327/editorialboard.htm>

PUBLICATION DATE

February 21, 2021

COPYRIGHT

© 2021 Baishideng Publishing Group Inc

INSTRUCTIONS TO AUTHORS

<https://www.wjgnet.com/bpg/gerinfo/204>

GUIDELINES FOR ETHICS DOCUMENTS

<https://www.wjgnet.com/bpg/GerInfo/287>

GUIDELINES FOR NON-NATIVE SPEAKERS OF ENGLISH

<https://www.wjgnet.com/bpg/gerinfo/240>

PUBLICATION ETHICS

<https://www.wjgnet.com/bpg/GerInfo/288>

PUBLICATION MISCONDUCT

<https://www.wjgnet.com/bpg/gerinfo/208>

ARTICLE PROCESSING CHARGE

<https://www.wjgnet.com/bpg/gerinfo/242>

STEPS FOR SUBMITTING MANUSCRIPTS

<https://www.wjgnet.com/bpg/GerInfo/239>

ONLINE SUBMISSION

<https://www.f6publishing.com>



Clinical and Translational Research

Quantitative multiparametric magnetic resonance imaging can aid non-alcoholic steatohepatitis diagnosis in a Japanese cohort

Kento Imajo, Louise Tetlow, Andrea Dennis, Elizabeth Shumbayawonda, Sofia Mouchti, Timothy J Kendall, Eve Fryer, Shogi Yamanaka, Yasushi Honda, Takaomi Kessoku, Yuji Ogawa, Masato Yoneda, Satoru Saito, Catherine Kelly, Matt D Kelly, Rajarshi Banerjee, Atsushi Nakajima

ORCID number: Kento Imajo 0000-0002-1931-6326; Louise Tetlow 0000-0001-6285-4878; Andrea Dennis 0000-0002-0152-6528; Elizabeth Shumbayawonda 0000-0003-0351-2063; Sofia Mouchti 0000-0002-3169-5242; Timothy J Kendall 0000-0002-4174-2786; Eve Fryer 0000-0003-1385-6433; Shogi Yamanaka 0000-0001-8882-3981; Yasushi Honda 0000-0002-1624-5462; Takaomi Kessoku 0000-0002-5587-1386; Yuji Ogawa 0000-0001-7033-088X; Masato Yoneda 0000-0001-7815-549X; Satoru Saito 0000-0002-5666-5218; Catherine Kelly 0000-0002-5834-1234; Matt D Kelly 0000-0002-5834-635X; Rajarshi Banerjee 0000-0003-2022-5218; Atsushi Nakajima 0000-0002-6263-1436.

Author contributions: Imajo K and Nakajima A developed the study concept, protocols and initiated the project; Kelly MD and Banerjee R assisted in the further development of the protocol and drafting the clinical study protocol; Imajo K, Nakajima A, Fryer E, Kendall TJ, Yamanaka S, Honda Y, Kessoku T, Ogawa Y, Yoneda M and Saito S contributed to the data collection; Tetlow L, Dennis AM, Shumbayawonda E to the data analysis; Imajo K, Tetlow L, Nakajima A, Dennis AM, Shumbayawonda E, Kelly C, Kelly

Kento Imajo, Yasushi Honda, Takaomi Kessoku, Yuji Ogawa, Satoru Saito, Atsushi Nakajima, Department of Gastroenterology and Hepatology, Yokohama City University School of Medicine, Yokohama 236-0004, Japan

Louise Tetlow, Andrea Dennis, Elizabeth Shumbayawonda, Sofia Mouchti, Catherine Kelly, Matt D Kelly, Rajarshi Banerjee, Innovation, Perspectum, Oxford OX4 2LL, United Kingdom

Timothy J Kendall, Centre for Inflammation Research, University of Edinburgh, Edinburgh, United Kingdom, Edinburgh EH16 4TJ, United Kingdom

Eve Fryer, Department of Cellular Pathology, Oxford University Hospitals NHS Foundation Trust, Oxford OX3 9DU, United Kingdom

Shogi Yamanaka, Anatomic and Clinical Pathology Department, Yokohama City University Hospital, Yokohama 236-0004, Japan

Masato Yoneda, Department of Gastroenterology, Yokohama City University Graduate School of Medicine, Yokohama 236-0004, Japan

Corresponding author: Andrea Dennis, PhD, Research Scientist, Innovation, Perspectum, Gemini One, 5520 John Smith Drive, Oxford OX4 2LL, United Kingdom.
andrea.dennis@perspectum.com

Abstract

BACKGROUND

Non-invasive assessment of non-alcoholic steatohepatitis (NASH) is increasing in desirability due to the invasive nature and costs associated with the current form of assessment; liver biopsy. Quantitative multiparametric magnetic resonance imaging (mpMRI) to measure liver fat (proton density fat fraction) and fibroinflammatory disease [iron-corrected T1 (cT1)], as well as elastography techniques [vibration-controlled transient elastography (VCTE) liver stiffness measure], magnetic resonance elastography (MRE) and 2D Shear-Wave elastography (SWE) to measure stiffness and fat (controlled attenuated parameter, CAP) are emerging alternatives which could be utilised as safe surrogates to liver biopsy.

MD and Banerjee R drafted and completed the manuscript. All authors contributed to the final manuscript.

Institutional review board

statement: The study was conducted in accordance with the ethical principles of the Declaration of Helsinki 2013, was approved by the Ethics Committee of Yokohama City University Hospital and was registered as a clinical trial (UMIN Clinical Trials Registry: UMIN000026145).

Conflict-of-interest statement:

Perspectum Ltd is a privately funded commercial enterprise that develops medical devices to address unmet clinical needs, including LiverMultiScan®. LT, ES, AD, MK are all employees of Perspectum. RB is CEO of Perspectum. KI, and AN have no relevant disclosures to this study. TK and EF undertake consultancy work for Perspectum.

Data sharing statement: No additional data are available.

Open-Access: This article is an open-access article that was selected by an in-house editor and fully peer-reviewed by external reviewers. It is distributed in accordance with the Creative Commons Attribution NonCommercial (CC BY-NC 4.0) license, which permits others to distribute, remix, adapt, build upon this work non-commercially, and license their derivative works on different terms, provided the original work is properly cited and the use is non-commercial. See: <http://creativecommons.org/licenses/by-nc/4.0/>

Manuscript source: Unsolicited manuscript

Specialty type: Gastroenterology and hepatology

Country/Territory of origin: Japan

Peer-review report's scientific quality classification

Grade A (Excellent): A
Grade B (Very good): B
Grade C (Good): C

AIM

To evaluate the agreement of non-invasive imaging modalities with liver biopsy, and their subsequent diagnostic accuracy for identifying NASH patients.

METHODS

From January 2019 to February 2020, Japanese patients suspected of NASH were recruited onto a prospective, observational study and were screened using non-invasive imaging techniques; mpMRI with LiverMultiScan®, VCTE, MRE and 2D-SWE. Patients were subsequently biopsied, and samples were scored by three independent pathologists. The diagnostic performances of the non-invasive imaging modalities were assessed using area under receiver operating characteristic curve (AUC) with the median of the histology scores as the gold standard diagnoses. Concordance between all three independent pathologists was further explored using Krippendorff's alpha (α) from weighted kappa statistics.

RESULTS

$N = 145$ patients with mean age of 60 (SD: 13 years.), 39% females, and 40% with body mass index ≥ 30 kg/m² were included in the analysis. For identifying patients with NASH, MR liver fat and cT1 were the strongest performing individual measures (AUC: 0.80 and 0.75 respectively), and the mpMRI metrics combined (cT1 and MR liver fat) were the overall best non-invasive test (AUC: 0.83). For identifying fibrosis ≥ 1 , MRE performed best (AUC: 0.97), compared to VCTE-liver stiffness measure (AUC: 0.94) and 2D-SWE (AUC: 0.94). For assessment of steatosis ≥ 1 , MR liver fat was the best performing non-invasive test (AUC: 0.92), compared to controlled attenuated parameter (AUC: 0.75). Assessment of the agreement between pathologists showed that concordance was best for steatosis ($\alpha = 0.58$), moderate for ballooning ($\alpha = 0.40$) and fibrosis ($\alpha = 0.40$), and worst for lobular inflammation ($\alpha = 0.11$).

CONCLUSION

Quantitative mpMRI is an effective alternative to liver biopsy for diagnosing NASH and non-alcoholic fatty liver, and thus may offer clinical utility in patient management.

Key Words: Corrected T1; Fibro-inflammation; Non-invasive imaging; Non-alcoholic steatohepatitis; Multiparametric magnetic resonance imaging; Non-alcoholic fatty liver disease

©The Author(s) 2021. Published by Baishideng Publishing Group Inc. All rights reserved.

Core Tip: There is growing interest in the utility of non-invasive tests in the management of non-alcoholic steatohepatitis (NASH). We explored how magnetic resonance imaging technology can stratify patients with simple fatty liver disease from those with NASH. Our results showed that quantitative magnetic resonance imaging derived metrics showed the strongest correlations to the histological pathological components of NASH with very few technical failures. We also observed very high levels of inter-reader disagreement in histopathological biopsy reads, highlighting the pressing need for alternative diagnostic tests for NASH. Our work therefore supports the use of this non-invasive technology in day-to-day practice.

Citation: Imajo K, Tetlow L, Dennis A, Shumbayawonda E, Mouchti S, Kendall TJ, Fryer E, Yamanaka S, Honda Y, Kessoku T, Ogawa Y, Yoneda M, Saito S, Kelly C, Kelly MD, Banerjee R, Nakajima A. Quantitative multiparametric magnetic resonance imaging can aid non-alcoholic steatohepatitis diagnosis in a Japanese cohort. *World J Gastroenterol* 2021; 27(7): 609-623

URL: <https://www.wjgnet.com/1007-9327/full/v27/i7/609.htm>

DOI: <https://dx.doi.org/10.3748/wjg.v27.i7.609>

Grade D (Fair): 0

Grade E (Poor): 0

Received: August 28, 2020**Peer-review started:** August 28, 2020**First decision:** November 3, 2020**Revised:** November 17, 2020**Accepted:** December 28, 2020**Article in press:** December 28, 2020**Published online:** February 21, 2021**P-Reviewer:** Lei YC, Xu CF, Wu B**S-Editor:** Zhang H**L-Editor:** A**P-Editor:** Wang LL

INTRODUCTION

Non-alcoholic fatty liver disease (NAFLD) is the most common cause of chronic liver disease, affecting approximately 25% of the general population worldwide^[1] and up to 30% of the general population in Japan^[2]. Additionally, up to 19% of individuals in south east Asia with body mass index (BMI) ≤ 25 kg/m² have “lean” or “non-obese” NAFLD^[3,4]. The scope of disease aetiologies within NAFLD differ in both clinical significance and prognosis^[1,5-7] on a continuum that encompasses “simple steatosis” or NAFL (hepatic steatosis without inflammation), to non-alcoholic steatohepatitis (NASH) and NASH cirrhosis. NASH results when fat accumulation in the liver triggers inflammatory signals and reactive oxygen species that can amplify liver injury and stimulate fibrosis^[8]. NASH is predicted to become the leading cause of liver transplant over the coming decade^[1] as NASH patients have a greater tendency to develop advanced liver fibrosis, cirrhosis, and hepatocellular carcinoma^[9-11].

Liver biopsy is the current gold standard for differentiating simple steatosis from NASH as well as staging the severity of fibrosis in patients with NAFLD^[12]. However, due to the limitations associated with biopsy^[13], high procedure costs, high levels of discordance between readers, and poor acceptability by patients, there has been an increase in the use of non-invasive imaging biomarkers to diagnose and monitor the disease.

Vendor-neutral and scalable multiparametric magnetic resonance imaging (mpMRI) measurements of liver fat proton density fat fraction (PDFF) with IDEAL and iron corrected T1-mapping (cT1) are emerging as promising quantitative imaging biomarkers for NASH. MRI liver fat correlates strongly with histologically graded steatosis across the clinical range seen in NASH^[14] and has high diagnostic accuracy in stratifying all grades of liver steatosis^[15-17]. cT1 correlates with ballooning^[18], and has been shown to predict clinical outcomes in patients with chronic liver disease^[19,20]. Both metrics have good technical validity with high repeatability and reproducibility across MRI manufacturers and field strengths^[21]. Additionally, due to their sensitivity to subtle changes in hepatic fat and fibro-inflammation, mpMRI techniques are increasingly used as inclusion criteria endpoints in NASH clinical trials and are included in the FDA Biomarker Qualification Program.

Magnetic resonance elastography (MRE) is an alternative MR based approach that can be used to stage fibrosis. MRE has shown utility in identifying patients with NASH from those with simple steatosis^[22] whilst also being able to detect the presence of advanced fibrosis in patients with chronic liver disease^[23]. However, MRE has not demonstrated sufficient utility for the longitudinal monitoring of fibrosis progression or regression^[14,24].

Ultrasound based methods such as vibration-controlled transient elastography (VCTE) liver stiffness measure (LSM) have shown good utility in identifying patients with advanced fibrosis^[25,26], however they may be less reliable in patients who are morbidly obese; a high-risk group for NASH^[25]. VCTE controlled-attenuation parameter (CAP) has been shown to be sensitive to early changes in liver fat albeit with a low ability to differentiate steatosis levels.

The aim of this study was to evaluate the diagnostic performance of quantitative mpMRI, MRE, and transient elastography (VCTE and 2D shear-wave elastography) to identify patients with suspected NASH and to report on the correlations between these non-invasive technologies and histology.

MATERIALS AND METHODS

This was an observational trial conducted and sponsored by the Yokohama City University Hospital between January 2019 and February 2020. $N = 151$ adult participants who underwent a liver biopsy for suspected NASH were included in this interim analysis. Participants were invited to undergo core liver biopsy if there was evidence of steatosis (Proton density fat fraction $\geq 5.2\%$ or CAP ≥ 236)^[16]. Patients were excluded if there was contraindication to MRI, history of alcoholism, or evidence of other chronic liver disease (Figure 1). The study was conducted in accordance with the ethical principles of the Declaration of Helsinki 2013, was approved by the Ethics Committee of Yokohama City University Hospital and was registered as a clinical trial (UMIN Clinical Trials Registry: UMIN000026145).

Histopathological evaluations

Liver biopsy samples were obtained using a 16-gauge needle biopsy kit with an

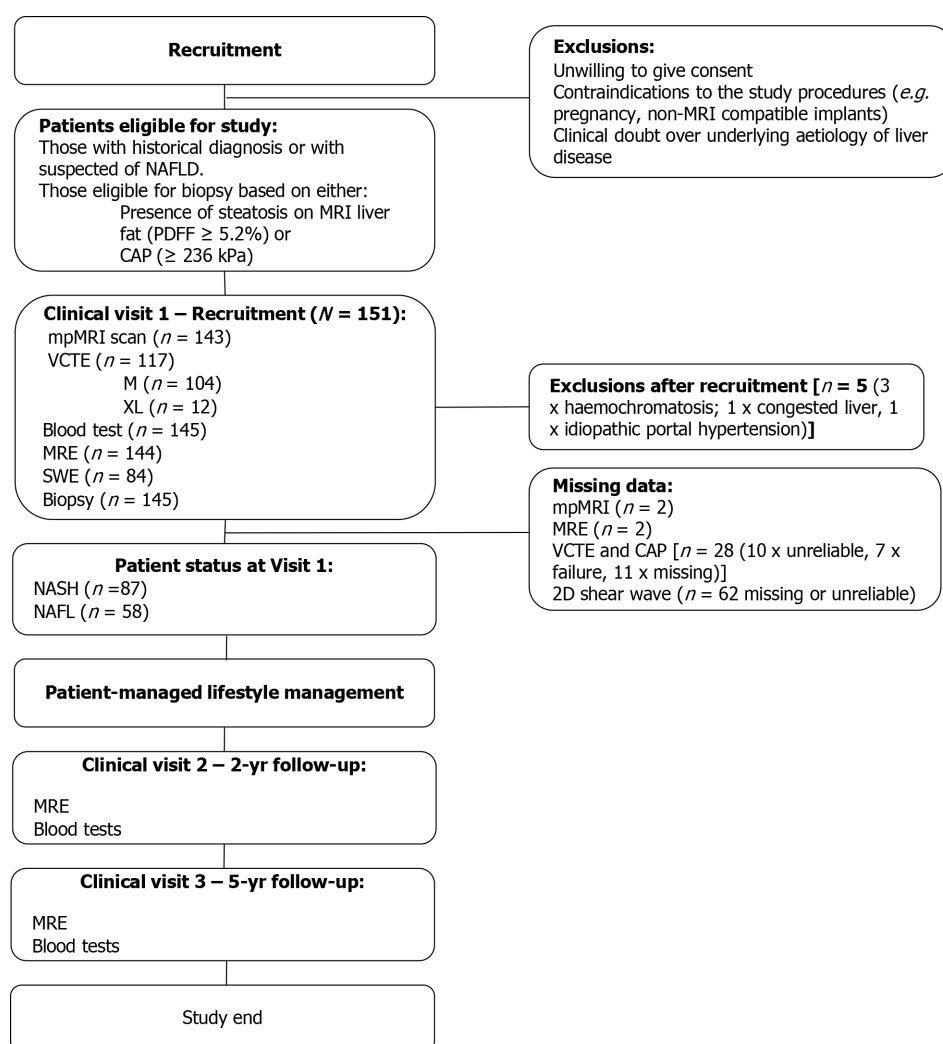


Figure 1 CONSORT diagram of patient pathway and inclusion into the study. mpMRI: Quantitative multiparametric magnetic resonance imaging; CAP: Controlled-attenuation parameter; MRE: Magnetic resonance elastography; NASH: Non-alcoholic steatohepatitis; NAFLD: Non-alcoholic fatty liver disease; VCTE: Vibration-controlled transient elastography.

adequate liver biopsy defined as being ≥ 20 mm in length and/or with ≥ 10 portal tracts. Biopsy samples were assessed independently by three histopathologists, one at YCUH at the time of collection and then later by a further two pathologists using digitalised biopsy slides. Histological scoring of fibrosis, steatosis, lobular inflammation, and hepatocyte ballooning was performed by all pathologists, and overall disease activity was graded according to the NAFLD activity score [NASH Clinical Research Network (NAS)]. NASH was defined as $\text{NAS} \geq 4$, ballooning ≥ 1 and inflammation ≥ 1 as described in AASLD guidelines^[12]. All scores were taken from the median score for each component from the three pathologists.

Non-invasive biomarkers

MR liver fat and cT1 measurements were made using the non-contrast LiverMultiScan® mpMRI protocol (Perspectum, Oxford, United Kingdom), performed with the patient in the supine position using a 3 Tesla GE Discovery 750W scanner system (GE Healthcare, Milwaukee, WI, United States). The average scan time for this protocol was 10 min. Four single transverse slices were captured through the liver centered on the porta hepatis. Anonymised mpMRI data were analysed off-site by image analysts trained in abdominal anatomy and artefact detection, who were blinded to the clinical data and risk grouping. For MR liver fat, three 15 mm diameter circular regions of interest (ROIs) were selected on the transverse maps to cover a representative sample of the liver parenchyma. For cT1 (ms), three ROIs were placed on the central slice within the typical percutaneous biopsy region. Median values from all pixels within the ROIs were calculated and used as the representative score.

MRE examinations were performed using the same MRI scanner and following a 2-

dimensional MRE protocol^[27]. Interpretation of MRE images to obtain stiffness values was performed by abdominal radiologists^[22]. VCTE-LSMs were obtained by one operator using either 3.5 MHz M-probe and/or 2.5 MHz XL-probe dependent upon suitability (waist-hip circumference and BMI) and through use of the automatic probe selection tool embedded within the Fibroscan operating software^[28]. VCTE-LSM measures with at least 10 valid shots and a success rate of $\geq 60\%$ were considered reliable and used for statistical analysis. Hepatic steatosis was assessed using the CAP value provided by the device. 2D shear-wave elastography (2D-SWE) measurements were obtained using a Logiq S8 system (GE Healthcare)^[29]. Example images are shown in [Figure 2](#) for all methods.

Statistical analysis

Descriptive statistics were used to summarise baseline participant characteristics. Continuous variables were reported as mean and standard deviation, categorical variables were reported as frequency and percentage, and confidence intervals (CI) were reported at the 95% level. Mean difference in biomarker values between those with NAFL and those with NASH were compared using independent t-tests or Wilcoxon signed-rank tests, depending on distribution. Diagnostic performance of non-invasive biomarkers was assessed using area under receiver operator characteristic curve (AUC) with multivariate logistic regressions utilised to assess performance of combined biomarkers. Correlations between median scores from the 3 pathology reads and image-derived markers (MR liver fat, cT1, MRE, VCTE-LSM and CAP) were assessed using Spearman's rank correlation coefficient.

Inter-rater variability analysis between the pathology scores given by the 3 pathologists were performed using tri-variate weighted kappa statistic, with the overall variability seen for each of the histological metrics assessed by Krippendorff's alpha^[30].

Statistical analysis was performed using R software version 3.6.1 with $P < 0.05$ considered to be statistically significant. Case-wise deletion was employed to include only complete cases for MR metrics, VCTE-LSM and CAP for each analysis as appropriate rather than imputing any missing values.

RESULTS

Of the initial 151 patients who underwent liver biopsy, 145 were eligible for the study. The average age was 60 (± 13) years, 61% patients were male, 40% BMI ≥ 30 kg/m² and 60% of patients had NASH (NAS ≥ 4 with ballooning ≥ 1 and inflammation ≥ 1 ; [Table 1](#)). There was a broad range of histology scores across all aspects of the key histopathological hallmarks of NASH ([Table 2](#)). From the entire cohort, one had missing MRE data, two had missing LiverMultiScan[®] data, 28 missing or uninterpretable Fibroscan data, and 61 had missing or uninterpretable 2D-SWE data. Investigation into potential causes of failure for the ultrasound based methods revealed BMI to be significantly higher in the cases in which VCTE-LSM was unreported (31.7 kg/m² vs 28.1 kg/m², $P < 0.05$), and similarly was elevated in those with missing 2D-SWE (29.5 kg/m² vs 27.9 kg/m²).

Diagnostic accuracy of non-invasive imaging markers for differentiation of disease activity

Steatosis (NAFL): MR Liver fat [AUC: 0.92 (CI: 0.87-0.98)], and CAP [AUC: 0.75 (CI: 0.58-0.92)] both discriminated between steatosis ≥ 1 , while the other imaging markers were unable to [cT1 AUC: 0.64 (CI: 0.46-0.82), MRE AUC: 0.53 (CI: 0.33-0.72), VCTE-LSM AUC: 0.60 (CI: 0.37-0.82), 2D-SWE AUC: 0.53 (CI: 0.22-0.84)]. For steatosis ≥ 2 , MR liver fat again showed the best performance [MR liver fat: AUC: 0.86 (CI: 0.80-0.93); vs CAP AUC: 0.68 (CI: 0.59-0.78)]. 7 patients had CAP technical failure and 10 patients were not able to gain reliable results.

NASH: To diagnose steatohepatitis (NAS ≥ 4 with at least one in both ballooning and inflammation), MR liver fat [AUC: 0.80 (CI: 0.73-0.87)], cT1 [AUC: 0.75 (CI: 0.67-0.84)], and CAP [AUC: 0.71 (CI: 0.62-0.80)] all had good discriminatory performance, while VCTE-LSM [AUC: 0.56 (CI: 0.45-0.66)], MRE [AUC: 0.57 (CI: 0.47-0.67)] and 2D-SWE [AUC: 0.58 (CI: 0.45-0.71)] were not as effective ([Figure 3](#)). Multivariate analysis to explore the potential for increased diagnostic performance of biomarkers used in combination for identifying those with NASH, revealed the combination of cT1 and MR liver fat [AUC: 0.83 (CI: 0.76-0.90)] was superior to the individual markers and to

Table 1 Participant demographics

	Total (<i>n</i> = 145), mean ± SD (% of cohort)	NASH	NAFL
Total cohort (<i>n</i>)	145	87	58
Sex (male)	88 (60.7%)	46	42 ^a
Age	60.2 ± 13.1	60.9 ± 13.2	59 ± 12.9
BMI average	28.8 ± 4.7	29.9 ± 4.4	27.1 ± 4.8 ^c
Normal BMI (≥ 18.5 ≤ 22.9)	21.4 ± 1.6 (<i>n</i> = 17)	<i>n</i> = 6	<i>n</i> = 12
Overweight (≥ 23.0 ≤ 27.9)	25.6 ± 1.1 (<i>n</i> = 43)	<i>n</i> = 26	<i>n</i> = 26
Obese (≥ 27.5)	32.1 ± 3.2 (<i>n</i> = 82)	<i>n</i> = 55	<i>n</i> = 20
Blood serum tests			
AST (IU/L)	47.8 ± 27.5	56.4 ± 29.8	34.8 ± 17.1 ^c
ALT (IU/L)	59.8 ± 49.3	71.3 ± 51.5	42.6 ± 41.4 ^c
GGT	85.9 ± 78.4	97.8 ± 85.8	69.3 ± 62.9 ^b
Total bilirubin (mg/dL)	0.86 ± 0.4	0.8 ± 0.3	0.9 ± 0.4
Platelets (× 10 ⁴ /μL)	19.4 ± 7.3	19.9 ± 7.5	18.8 ± 7
HbA1C (%)	6.5 ± 1.1	6.6 ± 1.0	6.5 ± 1.1
Fasting insulin (mU/mL)	20 ± 14.2	20.6 ± 11.6	19 ± 17.4
Fasting blood glucose (mg/dL)	124 ± 34.7	126.1 ± 32.5	120.8 ± 37.8
Albumin (g/dL)	4.3 ± 0.5	4.3 ± 0.4	4.2 ± 0.5
Non-invasive test			
cT1	871 ± 102 (<i>n</i> = 143)	907 ± 90 (<i>n</i> = 87)	817 ± 96 ^c (<i>n</i> = 56)
MR liver fat	11.4 ± 6.1 (<i>n</i> = 143)	13.6 ± 5.8 (<i>n</i> = 87)	8.1 ± 5.1 ^c (<i>n</i> = 56)
CAP	294.3 ± 47.4 (<i>n</i> = 117)	309.1 ± 37.1 (<i>n</i> = 74)	268.9 ± 52.7 ^c (<i>n</i> = 43)
VCTE-LSM	12.8 ± 9.5 (<i>n</i> = 117)	13 ± 8.4 (<i>n</i> = 74)	12.5 ± 11.1 (<i>n</i> = 43)
MRE	4.2 ± 1.7 (<i>n</i> = 144)	4.3 ± 1.5 (<i>n</i> = 88)	4.1 ± 1.9 (<i>n</i> = 56)
SE	9.3 ± 2.7 (<i>n</i> = 84)	9.6 ± 2.4 (<i>n</i> = 50)	8.8 ± 3.1 (<i>n</i> = 33)
Reported pre-existing conditions			
Hypertensive	<i>n</i> = 71	<i>n</i> = 45	<i>n</i> = 26
Dyslipidaemic	<i>n</i> = 111	<i>n</i> = 72	<i>n</i> = 39
Reported as diabetic	<i>n</i> = 97	<i>n</i> = 59	<i>n</i> = 38

Non-alcoholic steatohepatitis (NASH) were patients with NASH clinical research network ≥ 4 with ballooning ≥ 1. Stars denote significance difference between those with NASH and non-alcoholic fatty liver these levels:

^a*P* < 0.05.

^b*P* < 0.01.

^c*P* < 0.001. MRE: Magnetic resonance elastography; CAP: Controlled-attenuation parameter; VCTE: Vibration-controlled transient elastography; cT1: Corrected T1; BMI: Body mass index; NASH: Non-alcoholic steatohepatitis; NAFL: Non-alcoholic fatty liver.

the combination of VCTE-LSM and CAP in combination [AUC: 0.71 (CI: 0.66-0.8)] (Figure 4).

Fibrosis: To measure fibrosis alone, MRE [AUC: 0.97 (CI: 0.94-1.0)], VCTE-LSM [AUC: 0.94 (CI: 0.9-0.99)] and 2D-SWE [AUC: 0.94 (CI: 0.86-1.0)] were all excellent at discriminating for any fibrosis (≥ 1) whilst MR liver fat [AUC: 0.68 (CI: 0.44-0.92)], cT1 [AUC: 0.63 (CI: 0.3-0.97)] and CAP [AUC: 0.6 (CI: 0.39-0.81)] were not as effective. These performances were maintained for discriminating those with more advanced fibrosis (≥ 2): MRE [AUC: 0.92 (CI: 0.87-0.97)]; VCTE-LSM [AUC: 0.88 (CI: 0.81-0.95)]; 2D-SWE [AUC: 0.87 (CI: 0.76-0.99)] compared to cT1 [AUC: 0.62 (CI: 0.49-0.74)] MR liver fat [AUC: 0.60 (CI: 0.48-0.72)] and CAP [AUC: 0.57 (CI: 0.45-0.70)]. VCTE-LSM,

Table 2 Range of histology scores reported across the entire cohort

Histology scores from biopsy (n = 144)				
	Score	Total	NASH	NAFL
Steatosis (Brunt)	0	13	0	13
	1	74	36	37
	2	35	30	5
	3	21	20	1
Lobular inflammation	0	13	0	1
	1	91	48	51
	2	35	35	9
	3	4	3	0
Ballooning	0	39	0	39
	1	72	55	16
	2	32	31	1
	3	0	0	0
Fibrosis (Kleiner)	0	5	1	0
	1	24	10	14
	2	27	16	11
	3	55	39	15
	4	31	19	12
NAS	0	0	0	0
	1	5	0	5
	2	23	0	22
	3	26	0	26
	4	25	25	1
	5	37	35	2
	6	16	16	0
	7	8	8	0
	8	2	2	0

NASH: Non-alcoholic steatohepatitis; NAFL: Non-alcoholic fatty liver.

and to an even greater extent 2D-SWE, however both had high levels of missing data (20% and 42% respectively), likely to be related to elevated obesity.

Advanced NASH: To identify those with NASH and fibrosis ($NAS \geq 4$ with $F \geq 2$), both cT1 [AUC: 0.74 (CI: 0.66-0.82)] and MR liver fat [AUC: 0.71 (CI: 0.63-0.80)] outperformed the other measures; MRE [AUC 0.66 (CI: 0.57-0.75)], VCTE-LSM [AUC: 0.64 (CI: 0.54-0.74)], CAP [AUC: 0.68 (CI: 0.59-0.78)], and 2D-SWE [AUC: 0.62 (CI: 0.49-0.75)]. Combining cT1 and MR liver fat improved the performance [AUC: 0.76 (CI: 0.69-0.84)] and was superior to the combination of VCTE-LSM and CAP [AUC: 0.70 (CI: 0.61-0.79)], (Figure 4).

Correlations between image derived biomarkers and histological markers of disease

MRI cT1 correlated significantly with all key aspects of histology [fibrosis, steatosis, ballooning and lobular inflammation ($r_s = 0.24$, $r_s = 0.29$, $r_s = 0.39$, $r_s = 0.31$, respectively)] and with overall NAS ($r_s = 0.58$). MR liver fat was positively correlated with steatosis ($r_s = 0.70$), and with inflammation ($r_s = 0.28$), ballooning ($r_s = 0.29$) and overall NAS ($r_s = 0.64$) but was negatively correlated with fibrosis ($r_s = -0.25$). MRE was significantly

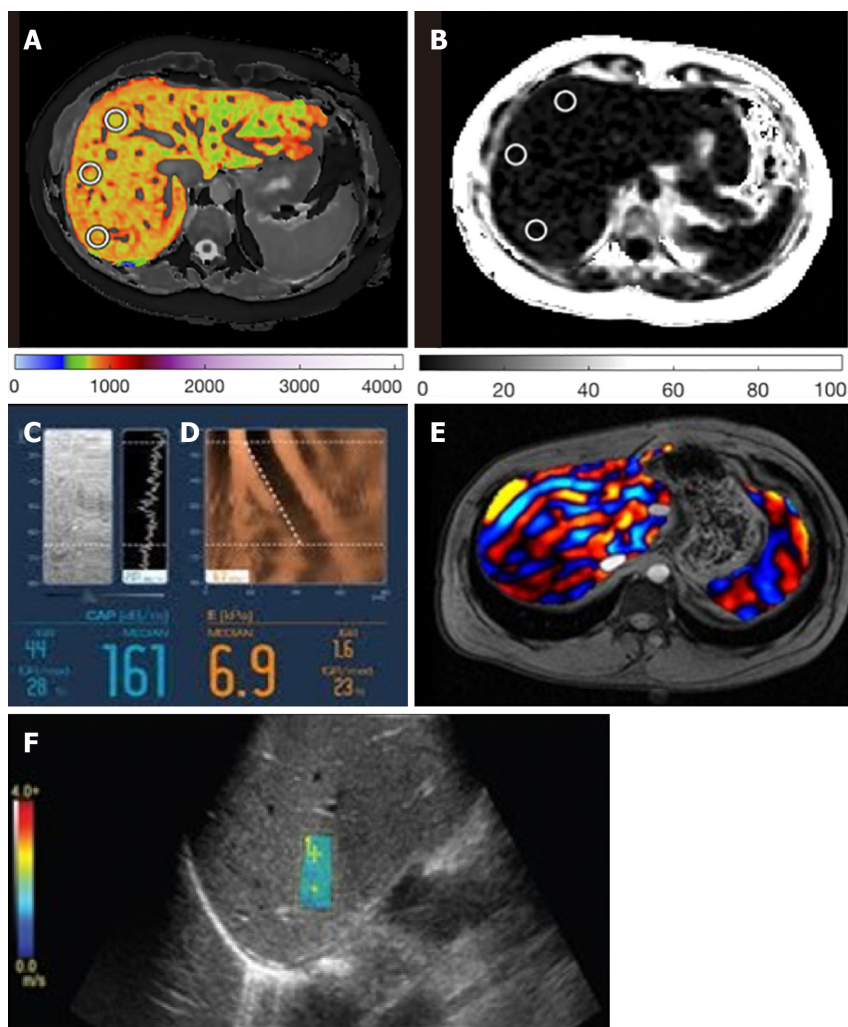


Figure 2 Example images from each technology. A: Corrected T1 map; B: Magnetic resonance liver fat map; C: Fibroscan controlled-attenuation parameter; D: Fibroscan Liver Stiffness; E: magnetic resonance elastography liver stiffness map; and F: 2D Shear-wave elastography.

correlated with fibrosis ($r_s = 0.75$) as well as ballooning and lobular inflammation ($r_s = 0.32$, $r_s = 0.16$ respectively) and negatively correlated with steatosis ($r_s = -0.23$). VCTE-LSM correlated significantly with fibrosis ($r_s = 0.69$) and ballooning ($r_s = 0.29$), and CAP with steatosis ($r_s = 0.39$), inflammation ($r_s = 0.26$), ballooning ($r_s = 0.33$) and NAS ($r_s = 0.49$). 2D shear-wave elastography was positively correlated with fibrosis ($r_s = 0.72$) and ballooning ($r_s = 0.34$; Table 3).

Concordance between pathologists

Assessment of the overall agreement (Krippendorff's alpha) of the pathologists for each histological marker showed that there was moderate agreement for indicators of steatosis ($\alpha = 0.58$) and NAS ($\alpha = 0.42$), fair agreement for ballooning and fibrosis ($\alpha = 0.40$ for both), and none to slight agreement on lobular inflammation ($\alpha = 0.11$). Assessment of the trivariate weighted kappa scores from individual pathologists for each metric showed no reoccurring pattern of agreement between any two pathologists (Table 4).

DISCUSSION

The diagnosis of NASH is important as it provides prognostic information indicating an increased risk of fibrosis progression and liver-related mortality but has hitherto been limited because of the need for histological verification. In clinical practice, distinguishing between NAFL, NASH, and NASH with fibrosis is highly desirable for risk stratification. Patients with steatosis can be educated about future cardiovascular risk, and lifestyle measures to prevent them, while those with NASH, or NASH and

Table 3 Spearman's correlation coefficients for all variables

	cT1, (n = 143)	MR liver fat (n = 143)	MRE (n = 144)	VCTE-LSM (n = 117)	CAP (n = 117)	2D SWE (n = 84)
Fibrosis	0.24, $P < 0.01$	-0.25, $P < 0.01$	0.75, $P < 0.001$	0.69, $P < 0.001$	0.05, $P = 0.58$	0.72, $P < 0.001$
Steatosis	0.29, $P < 0.001$	0.70, $P < 0.001$	-0.23, $P < 0.01$	-0.09, $P = 0.23$	0.39, $P < 0.001$	-0.07, $P = 0.53$
Lobular inflammation	0.31, $P < 0.001$	0.28, $P < 0.001$	0.16, $P < 0.01$	0.15, $P = 0.10$	0.26, $P < 0.01$	0.16, $P = 0.15$
Ballooning	0.39, $P < 0.001$	0.29, $P < 0.001$	0.32, $P < 0.01$	0.29, $P < 0.01$	0.33, $P < 0.001$	0.34, $P < 0.001$
NAS	0.58, $P < 0.001$	0.64, $P < 0.001$	0.06, $P = 0.44$	0.13, $P = 0.13$	0.49, $P < 0.001$	0.16, $P = 0.13$

$P < 0.05$: Correlations with statistical significance. MRE: Magnetic resonance elastography; CAP: Controlled-attenuation parameter; VCTE: Vibration-controlled transient elastography; cT1: Corrected T1; SWE: Shear-Wave elastography; NASH: Non-alcoholic steatohepatitis; LSM: Liver stiffness measure.

Table 4 Inter-rater variability between the three pathologists for each histology metric

Histological metric	Pathologists	Kappa weighted	Lower CI	Upper CI	ASE	P value	Overall inter-rater variability (Krippendorff's alpha)
Steatosis	1 vs 2	0.609	0.517	0.7	0.0467	< 0.0001	0.584
	1 vs 3	0.483	0.388	0.579	0.0489	< 0.0001	
	2 vs 3	0.585	0.485	0.686	0.0513	< 0.0001	
Lobular inflammation	1 vs 2	0.118	0.0631	0.173	0.0281	< 0.0001	0.109
	1 vs 3	0.0376	0.00574	0.0695	0.0163	0.02	
	2 vs 3	0.179	0.0699	0.288	0.0556	0.001	
Ballooning	1 vs 2	0.297	0.205	0.389	0.047	< 0.0001	0.398
	1 vs 3	0.459	0.344	0.573	0.0583	< 0.0001	
	2 vs 3	0.27	0.18	0.36	0.0453	< 0.0001	
Fibrosis	1 vs 2	0.719	0.65	0.788	0.0353	< 0.0001	0.398
	1 vs 3	0.571	0.496	0.647	0.0386	< 0.0001	
	2 vs 3	0.597	0.521	0.672	0.0385	< 0.0001	
NAS	1 vs 2	0.279	0.202	0.357	0.0398	< 0.0001	0.421
	1 vs 3	0.244	0.172	0.316	0.0366	< 0.0001	
	2 vs 3	0.434	0.35	0.518	0.043	< 0.0001	

CI: Confidence intervals.

fibrosis, can be monitored and treated (pioglitazone, clevoglitazar) to reduce the risk of cardiovascular and liver clinical complications. In this study, we were able to identify and differentiate patients with steatosis, NASH, and NASH with fibrosis with good diagnostic performance using non-invasive technologies which characterise liver tissue accurately.

The diagnosis of NASH is based, at present, on the histological presence of steatosis and either lobular inflammation or ballooning, with the presence of fibrosis highlighting disease progression. Currently, the only biomarkers shown to predict outcomes in patients are histological fibrosis and cT1^[19,20,31]. However, cT1 is sensitive to ballooning, inflammation, steatosis as well as fibrosis, and so cannot be considered a pure fibrosis biomarker. When measuring just fibrosis, MRE had greater correlations to histology and greater sensitivity than other methods but could not by itself distinguish NAFL from NASH or NASH with fibrosis. Whilst ultrasound methods are also effective for staging advanced fibrosis, in line with reported literature^[32-35], they can be less reliable in obese patients with higher BMI as observed in the patients in this cohort with missing VCTE and 2D-SWE data. In contrast BMI has not been shown to systematically affect the failure rate for MRE^[23] or of mpMRI^[36,37], except for the very

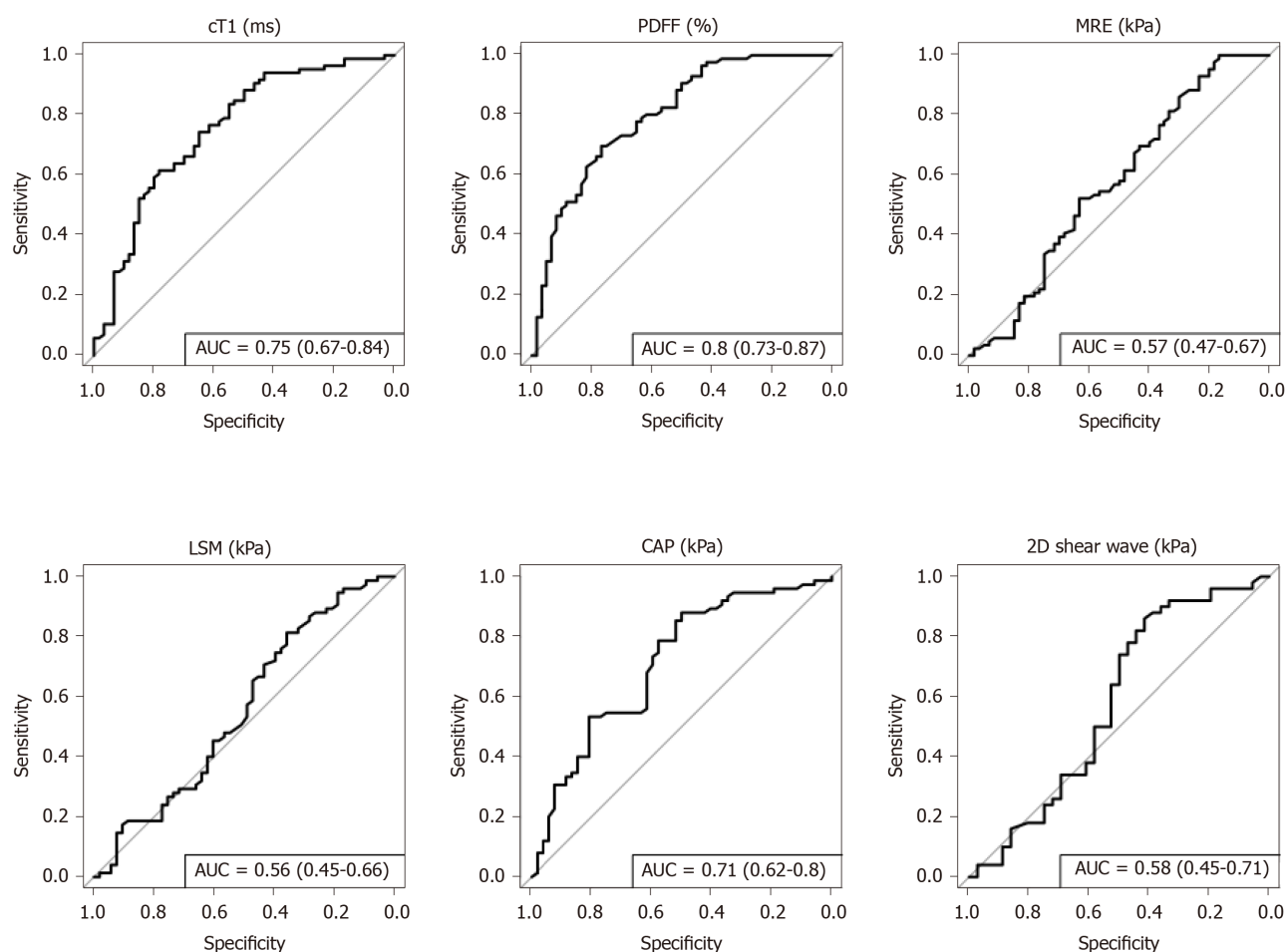


Figure 3 Receiver operator characteristic curves for discriminating those with non-alcoholic steatohepatitis (NAS ≥ 4 and ballooning > 1 or inflammation > 1) from those without. Area under the curve and confidence intervals displayed in the legend for each non-invasive measure. MRE: Magnetic resonance elastography; CAP: Controlled-attenuation parameter; cT1: Corrected T1; LSM: Liver stiffness measure; PDFF: Proton density fat fraction.

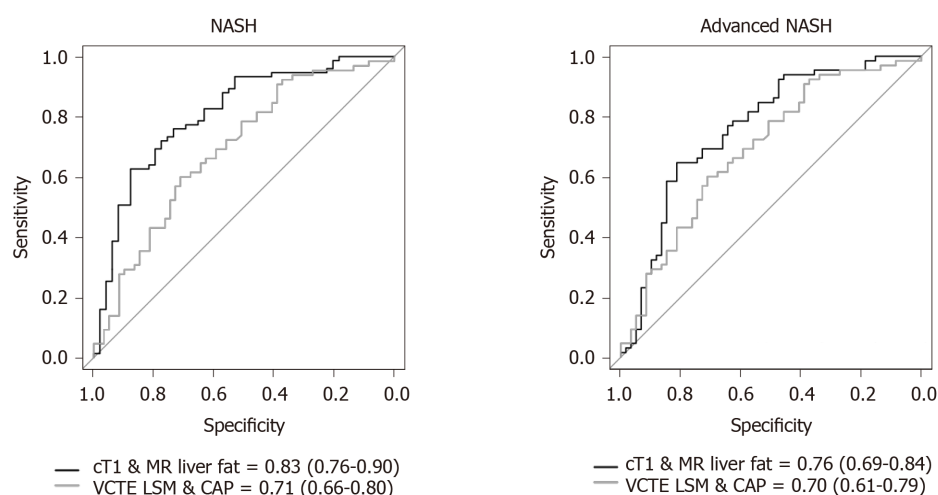


Figure 4 Receiver operator characteristic curves for discriminating those with non-alcoholic steatohepatitis (left) and those with non-alcoholic steatohepatitis with fibrosis (right). Area under the curve and confidence intervals displayed in the legend for each non-invasive measure. CAP: Controlled-attenuation parameter; VCTE: Vibration-controlled transient elastography; cT1: Corrected T1; NASH: Non-alcoholic steatohepatitis.

unusual circumstances when a participant is simply too large to fit into the scanner. All elastography measures however have been shown to be confounded by iron, steatosis and inflammation^[38] in the measure of fibrosis.

The assessment of steatosis is important as the accumulation of liver fat is linked with the progression of hepatocyte injury that can ultimately result in fibrosis^[39]; the downstream consequence of NASH which is linked to poor clinical outcomes^[31]. In this study, MR liver fat demonstrated better performance than CAP for the detection and differentiation of steatosis grades. As a result, this makes MR liver fat a good marker of NAFL and NASH. However, where cT1 appears to have an advantage over MR liver fat as a non-invasive biomarker for NASH is in the detection and diagnosis of patients with both NASH and fibrosis. Both cT1, and uncorrected T1 have been reported to be elevated in those with advanced liver fibrosis^[40-43]. A key limitation of MR liver fat as a solo biomarker of NASH is that patients with advanced fibrosis and cirrhosis have lower acclimations of liver fat than those at earlier stages of disease^[44,45]. Our results, in line with those reported in the literature, demonstrate a negative association between MR liver fat and advanced fibrosis^[44,45]. This is an important consideration and is reflected in the superior diagnostic accuracy of cT1 when compared to MR liver fat for identifying those with NASH and fibrosis ≥ 2 , with the composite marker of cT1 and MR liver fat showing the greatest diagnostic accuracy.

New diagnostic tools are evaluated by comparison to histological measures to evaluate their utility. Nevertheless, recent studies on the reproducibility of histology^[46] have established that biopsy, as the de facto benchmark, is not perfect. We also observed discordance between different pathologists across the four cardinal pathological features (steatosis, ballooning, lobular inflammation and fibrosis), with no common pattern of concordance seen between any two pathologists. Previous literature discusses the subjective nature of histological grading systems^[47] which is evident in these findings, demonstrating that subjectivity as well as potential sampling and human error can affect results^[48-50]. This analysis highlights the need for more robust endpoints with which to evaluate the performance of non-invasive diagnostics. The gold standard would be a tool that predicts clinical outcomes and can thus provide prognosis. Whilst such studies are both time-consuming and costly in order to generate the necessary evidence, encouragingly, initial work in this space has demonstrated potential for cT1 to predict clinical outcomes in patients with chronic liver disease^[19,20]. It is hoped that further validation of these observations in patients with NASH specifically will aid in the development of a clinical pathway that does not rely on invasive liver biopsy.

This study was not without its limitations, with the pre-screening step prior to liver biopsy likely truncating the correlations that would be observed across the full disease spectrum. While this may also impact the diagnostic accuracy evaluated, this pre-screening approach is representative of clinical practice. Observed failure rates for the ultrasound-based methods also have the potential to skew the results given its dependence on BMI, with patients with high BMI less likely to be included in the study. In practice this has a bearing on the value proposition of such technologies for screening and monitoring as failed measurements will result in necessary further clinical tests for patients.

CONCLUSION

In summary, this study demonstrates the clinical utility of mpMRI for the stratification of NAFLD, and encourages mpMRI use as a non-invasive alternative to biopsy in the clinical care pathway. Quantitative mpMRI metrics showed the strongest overall correlations to the histological components of NASH with fewer technical failures. mpMRI also out-performed MRE and ultrasound-based elastography methods in the identification of patients with NASH and fibrosis. The ability to risk stratify patients in a single non-invasive test is a particular strength of mpMRI, offering a safe and cost-effective alternative to liver biopsy.

ARTICLE HIGHLIGHTS

Research background

Non-alcoholic fatty liver disease affects 25% of the population worldwide and up to 30% in the Japanese population, and in some can progress to non-alcoholic

steatohepatitis (NASH), a leading cause of liver transplant due to its strong propensity to develop into cirrhosis and hepatocellular carcinoma.

Research motivation

Liver biopsy is the current reference standard for a clinical diagnosis of NASH, a method that is expensive, invasive and suffers from great observer variability. Non-invasive and scalable alternatives are required in order to meet the burgeoning demands of the disease on clinical caseloads across the globe.

Research objectives

The main objectives of the study were to evaluate the diagnostic performance of non-invasive, image derived metrics to identify patients with suspected NASH. The metrics under investigation included two quantitative multi-parametric magnetic resonance imaging (MRI) measures, iron corrected T1 mapping [(cT1), a marker of fibro-inflammation] and proton density liver fat fraction (a marker of liver fat), magnetic resonance elastography and ultrasound based transient elastography (vibration-controlled transient elastography and 2D shear-wave elastography), both markers of liver stiffness.

Research methods

In an observational study of patients who were being screened clinically on suspicion of NASH, $n = 145$ individuals underwent liver biopsy and concomitant imaging measures of liver health. Diagnosis of NASH was based on histology, graded using the NAS- Clinical Research Network scoring system and diagnostic accuracy of the image-derived metrics assessed using area under receiver operator characteristic curve. In addition, the biopsy slides were read by 2 further pathologists and comparisons made to explore the level of agreement on diagnosis between individual doctors.

Research results

In this study assessing the ability of different non-invasive biomarkers to detect NASH, MR liver fat and cT1 were superior to the other metrics investigated. Crucially however, the composite marker of cT1 and MR liver fat showed the greatest diagnostic accuracy for identifying those with NASH and also those with NASH with fibrosis. These measures also had very few technical failures. This is the first assessment and direct comparison of these technologies in a Japanese cohort. We also observed discordance between different pathologists across the four cardinal pathological features (steatosis, ballooning, lobular inflammation and fibrosis), with no common pattern of agreement seen between any two pathologists.

Research conclusions

These results demonstrate the clinical utility of quantitative multiparametric magnetic resonance imaging (mpMRI) for the identification and stratification of patients with NASH from those with evidence of NAFLD and encourages mpMRI use as a non-invasive alternative to biopsy in the clinical care pathway. Quantitative mpMRI metrics showed the strongest correlation to the histological components of NASH with fewer technical failures. mpMRI also out-performed magnetic resonance elastography and ultrasound-based elastography methods in the identification of patients with NASH and fibrosis. Liver biopsy suffered from high levels of inter-reading disagreement, highlighting the pressing need for alternative diagnostic tests for NASH.

Research perspectives

The ability to risk stratify patients in a single non-invasive test is a particular strength of mpMRI, offering a safe and cost-effective alternative to liver biopsy. Future work should be focused on validating these findings further and on longer term outcomes studies to investigate the prognostic natures of these measurements in a Japanese population.

REFERENCES

- 1 Younossi Z, Anstee QM, Marietti M, Hardy T, Henry L, Eslam M, George J, Bugianesi E. Global burden of NAFLD and NASH: trends, predictions, risk factors and prevention. *Nat Rev Gastroenterol Hepatol* 2018; **15**: 11-20 [PMID: 28930295 DOI: 10.1038/nrgastro.2017.109]

- 2 **Fan JG**, Kim SU, Wong VW. New trends on obesity and NAFLD in Asia. *J Hepatol* 2017; **67**: 862-873 [PMID: 28642059 DOI: 10.1016/j.jhep.2017.06.003]
- 3 **Albhai S**, Chowdhury A, Sanyal AJ. Non-alcoholic fatty liver disease in lean individuals. *JHEP Rep* 2019; **1**: 329-341 [PMID: 32039383 DOI: 10.1016/j.jhepr.2019.08.002]
- 4 **Younes R**, Bugianesi E. NASH in Lean Individuals. *Semin Liver Dis* 2019; **39**: 86-95 [PMID: 30654392 DOI: 10.1055/s-0038-1677517]
- 5 **Angulo P**. Long-term mortality in nonalcoholic fatty liver disease: is liver histology of any prognostic significance? *Hepatology* 2010; **51**: 373-375 [PMID: 20101746 DOI: 10.1002/hep.23521]
- 6 **Singh S**, Allen AM, Wang Z, Prokop LJ, Murad MH, Loomba R. Fibrosis progression in nonalcoholic fatty liver vs nonalcoholic steatohepatitis: a systematic review and meta-analysis of paired-biopsy studies. *Clin Gastroenterol Hepatol* 2015; **13**: 643-54. quiz e39-40 [PMID: 24768810 DOI: 10.1016/j.cgh.2014.04.014]
- 7 **Seki Y**, Kakizaki S, Horiguchi N, Hashizume H, Tojima H, Yamazaki Y, Sato K, Kusano M, Yamada M, Kasama K. Prevalence of nonalcoholic steatohepatitis in Japanese patients with morbid obesity undergoing bariatric surgery. *J Gastroenterol* 2016; **51**: 281-289 [PMID: 26314837 DOI: 10.1007/s00535-015-1114-8]
- 8 **Marra F**, Lotersztajn S. Pathophysiology of NASH: perspectives for a targeted treatment. *Curr Pharm Des* 2013; **19**: 5250-5269 [PMID: 23394092 DOI: 10.2174/13816128113199990344]
- 9 **Wong SW**, Ting YW, Chan WK. Epidemiology of non-alcoholic fatty liver disease-related hepatocellular carcinoma and its implications. *JGH Open* 2018; **2**: 235-241 [PMID: 30483595 DOI: 10.1002/jgh3.12070]
- 10 **Angulo P**, Keach JC, Batts KP, Lindor KD. Independent predictors of liver fibrosis in patients with nonalcoholic steatohepatitis. *Hepatology* 1999; **30**: 1356-1362 [PMID: 10573511 DOI: 10.1002/hep.510300604]
- 11 **Ekstedt M**, Nasr P, Kechagias S. Natural History of NAFLD/NASH. *Curr Hepatol Rep* 2017; **16**: 391-397 [PMID: 29984130 DOI: 10.1007/s11901-017-0378-2]
- 12 **Chalasani N**, Younossi Z, Lavine JE, Charlton M, Cusi K, Rinella M, Harrison SA, Brunt EM, Sanyal AJ. The diagnosis and management of nonalcoholic fatty liver disease: Practice guidance from the American Association for the Study of Liver Diseases. *Hepatology* 2018; **67**: 328-357 [PMID: 28714183 DOI: 10.1002/hep.29367]
- 13 **Piccinino F**, Sagnelli E, Pasquale G, Giusti G. Complications following percutaneous liver biopsy. A multicentre retrospective study on 68,276 biopsies. *J Hepatol* 1986; **2**: 165-173 [PMID: 3958472 DOI: 10.1016/s0168-8278(86)80075-7]
- 14 **Harrison SA**, Dennis A, Fiore MM, Kelly MD, Kelly CJ, Paredes AH, Whitehead JM, Neubauer S, Traber PG, Banerjee R. Utility and variability of three non-invasive liver fibrosis imaging modalities to evaluate efficacy of GR-MD-02 in subjects with NASH and bridging fibrosis during a phase-2 randomized clinical trial. *PLoS One* 2018; **13**: e0203054 [PMID: 30192782 DOI: 10.1371/journal.pone.0203054]
- 15 **Causy C**, Reeder SB, Sirlin CB, Loomba R. Noninvasive, Quantitative Assessment of Liver Fat by MRI-PDFF as an Endpoint in NASH Trials. *Hepatology* 2018; **68**: 763-772 [PMID: 29356032 DOI: 10.1002/hep.29797]
- 16 **Imajo K**, Kessoku T, Honda Y, Tomeno W, Ogawa Y, Mawatari H, Fujita K, Yoneda M, Taguri M, Hyogo H, Sumida Y, Ono M, Eguchi Y, Inoue T, Yamanaka T, Wada K, Saito S, Nakajima A. Magnetic Resonance Imaging More Accurately Classifies Steatosis and Fibrosis in Patients With Nonalcoholic Fatty Liver Disease Than Transient Elastography. *Gastroenterology* 2016; **150**: 626-637. e7 [PMID: 26677985 DOI: 10.1053/j.gastro.2015.11.048]
- 17 **Jayakumar S**, Middleton MS, Lawitz EJ, Mantry PS, Caldwell SH, Arnold H, Mae Diehl A, Ghalib R, Elkhatab M, Abdelmalek MF, Kowdley KV, Stephen Djedjos C, Xu R, Han L, Mani Subramanian G, Myers RP, Goodman ZD, Afdhal NH, Charlton MR, Sirlin CB, Loomba R. Longitudinal correlations between MRE, MRI-PDFF, and liver histology in patients with non-alcoholic steatohepatitis: Analysis of data from a phase II trial of selonsertib. *J Hepatol* 2019; **70**: 133-141 [PMID: 30291868 DOI: 10.1016/j.jhep.2018.09.024]
- 18 **Eddowes PJ**, McDonald N, Davies N, Semple SIK, Kendall TJ, Hodson J, Newsome PN, Flintham RB, Wesolowski R, Blake L, Duarte RV, Kelly CJ, Herlihy AH, Kelly MD, Olliff SP, Hübscher SG, Fallowfield JA, Hirschfield GM. Utility and cost evaluation of multiparametric magnetic resonance imaging for the assessment of non-alcoholic fatty liver disease. *Aliment Pharmacol Ther* 2018; **47**: 631-644 [PMID: 29271504 DOI: 10.1111/apt.14469]
- 19 **Jayaswal ANA**, Levick C, Selvaraj EA, Dennis A, Booth JC, Collier J, Cobbold J, Tunnicliffe EM, Kelly M, Barnes E, Neubauer S, Banerjee R, Pavlides M. Prognostic value of multiparametric magnetic resonance imaging, transient elastography and blood-based fibrosis markers in patients with chronic liver disease. *Liver Int* 2020 [PMID: 32730664 DOI: 10.1111/Liv.14625]
- 20 **Pavlides M**, Banerjee R, Sellwood J, Kelly CJ, Robson MD, Booth JC, Collier J, Neubauer S, Barnes E. Multiparametric magnetic resonance imaging predicts clinical outcomes in patients with chronic liver disease. *J Hepatol* 2016; **64**: 308-315 [PMID: 26471505 DOI: 10.1016/j.jhep.2015.10.009]
- 21 **Bachtiar V**, Kelly MD, Wilman HR, Jacobs J, Newbould R, Kelly CJ, Gyngell ML, Groves KE, McKay A, Herlihy AH, Fernandes CC, Halberstadt M, Maguire M, Jayaratne N, Linden S, Neubauer S, Banerjee R. Repeatability and reproducibility of multiparametric magnetic resonance imaging of the liver. *PLoS One* 2019; **14**: e0214921 [PMID: 30970039 DOI: 10.1371/journal.pone.0214921]
- 22 **Chen J**, Talwalkar JA, Yin M, Glaser KJ, Sanderson SO, Ehman RL. Early detection of nonalcoholic

- steatohepatitis in patients with nonalcoholic fatty liver disease by using MR elastography. *Radiology* 2011; **259**: 749-756 [PMID: [21460032](#) DOI: [10.1148/radiol.11101942](#)]
- 23 **Singh S**, Venkatesh SK, Wang Z, Miller FH, Motosugi U, Low RN, Hassanein T, Asbach P, Godfrey EM, Yin M, Chen J, Keaveny AP, Bridges M, Bohte A, Murad MH, Lomas DJ, Talwalkar JA, Ehman RL. Diagnostic performance of magnetic resonance elastography in staging liver fibrosis: a systematic review and meta-analysis of individual participant data. *Clin Gastroenterol Hepatol* 2015; **13**: 440-451. e6 [PMID: [25305349](#) DOI: [10.1016/j.cgh.2014.09.046](#)]
 - 24 **Castera L**, Friedrich-Rust M, Loomba R. Noninvasive Assessment of Liver Disease in Patients With Nonalcoholic Fatty Liver Disease. *Gastroenterology* 2019; **156**: 1264-1281. e4 [PMID: [30660725](#) DOI: [10.1053/j.gastro.2018.12.036](#)]
 - 25 **Kwok R**, Tse YK, Wong GL, Ha Y, Lee AU, Ngu MC, Chan HL, Wong VW. Systematic review with meta-analysis: non-invasive assessment of non-alcoholic fatty liver disease--the role of transient elastography and plasma cytokeatin-18 fragments. *Aliment Pharmacol Ther* 2014; **39**: 254-269 [PMID: [24308774](#) DOI: [10.1111/apt.12569](#)]
 - 26 **Cosyns B**, Lancellotti P. Normal reference values for echocardiography: a call for comparison between ethnicities. *Eur Heart J Cardiovasc Imaging* 2016; **17**: 523-524 [PMID: [26976356](#) DOI: [10.1093/ehjci/jev353](#)]
 - 27 **Yin M**, Talwalkar JA, Glaser KJ, Manduca A, Grimm RC, Rossman PJ, Fidler JL, Ehman RL. Assessment of hepatic fibrosis with magnetic resonance elastography. *Clin Gastroenterol Hepatol* 2007; **5**: 1207-1213. e2 [PMID: [17916548](#) DOI: [10.1016/j.cgh.2007.06.012](#)]
 - 28 **Sandrin L**, Fourquet B, Hasquenoph JM, Yon S, Fournier C, Mal F, Christidis C, Zioli M, Poulet B, Kazemi F, Beaugrand M, Palau R. Transient elastography: a new noninvasive method for assessment of hepatic fibrosis. *Ultrasound Med Biol* 2003; **29**: 1705-1713 [PMID: [14698338](#) DOI: [10.1016/j.ultrasmedbio.2003.07.001](#)]
 - 29 **Ferraioli G**, Tinelli C, Lissandrin R, Zicchetti M, Dal Bello B, Filice G, Filice C. Point shear wave elastography method for assessing liver stiffness. *World J Gastroenterol* 2014; **20**: 4787-4796 [PMID: [24782633](#) DOI: [10.3748/wjg.v20.i16.4787](#)]
 - 30 **Landis JR**, Koch GG. An application of hierarchical kappa-type statistics in the assessment of majority agreement among multiple observers. *Biometrics* 1977; **33**: 363-374 [PMID: [884196](#) DOI: [10.2307/2529786](#)]
 - 31 **Angulo P**, Kleiner DE, Dam-Larsen S, Adams LA, Bjornsson ES, Charatcharoenwithaya P, Mills PR, Keach JC, Lafferty HD, Stahler A, Haflidadottir S, Bendtsen F. Liver Fibrosis, but No Other Histologic Features, Is Associated With Long-term Outcomes of Patients With Nonalcoholic Fatty Liver Disease. *Gastroenterology* 2015; **149**: 389-97. e10 [PMID: [25935633](#) DOI: [10.1053/j.gastro.2015.04.043](#)]
 - 32 **Castéra L**, Foucher J, Bernard PH, Carvalho F, Allaix D, Merrouche W, Couzigou P, de Lédinghen V. Pitfalls of liver stiffness measurement: a 5-year prospective study of 13,369 examinations. *Hepatology* 2010; **51**: 828-835 [PMID: [20063276](#) DOI: [10.1002/hep.23425](#)]
 - 33 **Petta S**, Di Marco V, Cammà C, Butera G, Cabibi D, Craxi A. Reliability of liver stiffness measurement in non-alcoholic fatty liver disease: the effects of body mass index. *Aliment Pharmacol Ther* 2011; **33**: 1350-1360 [PMID: [21517924](#) DOI: [10.1111/j.1365-2036.2011.04668.x](#)]
 - 34 **Tapper EB**, Lok AS. Use of Liver Imaging and Biopsy in Clinical Practice. *N Engl J Med* 2017; **377**: 756-768 [PMID: [28834467](#) DOI: [10.1056/NEJMr1610570](#)]
 - 35 **Cassinotto C**, Boursier J, de Lédinghen V, Lebigot J, Lapuyade B, Cales P, Hiriart JB, Michalak S, Bail BL, Cartier V, Mouries A, Oberti F, Fouchard-Hubert I, Vergnol J, Aubé C. Liver stiffness in nonalcoholic fatty liver disease: A comparison of supersonic shear imaging, FibroScan, and ARFI with liver biopsy. *Hepatology* 2016; **63**: 1817-1827 [PMID: [26659452](#) DOI: [10.1002/hep.28394](#)]
 - 36 **Mojtahed A**, Kelly CJ, Herlihy AH, Kin S, Wilman HR, McKay A, Kelly M, Milanesi M, Neubauer S, Thomas EL, Bell JD, Banerjee R, Harisinghani M. Reference range of liver corrected T1 values in a population at low risk for fatty liver disease-a UK Biobank sub-study, with an appendix of interesting cases. *Abdom Radiol (NY)* 2019; **44**: 72-84 [PMID: [30032383](#) DOI: [10.1007/s00261-018-1701-2](#)]
 - 37 **Wilman HR**, Kelly M, Garratt S, Matthews PM, Milanesi M, Herlihy A, Gyngell M, Neubauer S, Bell JD, Banerjee R, Thomas EL. Characterisation of liver fat in the UK Biobank cohort. *PLoS One* 2017; **12**: e0172921 [PMID: [28241076](#) DOI: [10.1371/journal.pone.0172921](#)]
 - 38 **Thomaides-Brears HB**, Lepe R, Banerjee R, Duncker C. Multiparametric MR mapping in clinical decision-making for diffuse liver disease. *Abdom Radiol (NY)* 2020; **45**: 3507-3522 [PMID: [32761254](#) DOI: [10.1007/s00261-020-02684-3](#)]
 - 39 **Kleiner DE**, Brunt EM. Nonalcoholic fatty liver disease: pathologic patterns and biopsy evaluation in clinical research. *Semin Liver Dis* 2012; **32**: 3-13 [PMID: [22418883](#) DOI: [10.1055/s-0032-1306421](#)]
 - 40 **Heye T**, Yang SR, Bock M, Brost S, Weigand K, Longerich T, Kauczor HU, Hosch W. MR relaxometry of the liver: significant elevation of T1 relaxation time in patients with liver cirrhosis. *Eur Radiol* 2012; **22**: 1224-1232 [PMID: [22302503](#) DOI: [10.1007/s00330-012-2378-5](#)]
 - 41 **Thomsen C**, Christoffersen P, Henriksen O, Juhl E. Prolonged T1 in patients with liver cirrhosis: an in vivo MRI study. *Magn Reson Imaging* 1990; **8**: 599-604 [PMID: [2082130](#) DOI: [10.1016/0730-725x\(90\)90137-q](#)]
 - 42 **Bradley CR**, Cox EF, Scott RA, James MW, Kaye P, Aithal GP, Francis ST, Guha IN. Multi-organ assessment of compensated cirrhosis patients using quantitative magnetic resonance imaging. *J Hepatol* 2018; **69**: 1015-1024 [PMID: [29886155](#) DOI: [10.1016/j.jhep.2018.05.037](#)]

- 43 **Banerjee R**, Pavlides M, Tunnicliffe EM, Piechnik SK, Sarania N, Philips R, Collier JD, Booth JC, Schneider JE, Wang LM, Delaney DW, Fleming KA, Robson MD, Barnes E, Neubauer S. Multiparametric magnetic resonance for the non-invasive diagnosis of liver disease. *J Hepatol* 2014; **60**: 69-77 [PMID: [24036007](#) DOI: [10.1016/j.jhep.2013.09.002](#)]
- 44 **Permutt Z**, Le TA, Peterson MR, Seki E, Brenner DA, Sirlin C, Loomba R. Correlation between liver histology and novel magnetic resonance imaging in adult patients with non-alcoholic fatty liver disease - MRI accurately quantifies hepatic steatosis in NAFLD. *Aliment Pharmacol Ther* 2012; **36**: 22-29 [PMID: [22554256](#) DOI: [10.1111/j.1365-2036.2012.05121.x](#)]
- 45 **Wildman-Tobriner B**, Middleton MM, Moylan CA, Rossi S, Flores O, Chang ZA, Abdelmalek MF, Sirlin CB, Bashir MR. Association Between Magnetic Resonance Imaging-Proton Density Fat Fraction and Liver Histology Features in Patients With Nonalcoholic Fatty Liver Disease or Nonalcoholic Steatohepatitis. *Gastroenterology* 2018; **155**: 1428-1435. e2 [PMID: [30031769](#) DOI: [10.1053/j.gastro.2018.07.018](#)]
- 46 **Davison BA**, Harrison SA, Cotter G, Alkhouri N, Sanyal A, Edwards C, Colca JR, Iwashita J, Koch GG, Dittrich HC. Suboptimal reliability of liver biopsy evaluation has implications for randomized clinical trials. *J Hepatol* 2020; **73**: 1322-1332 [PMID: [32610115](#) DOI: [10.1016/j.jhep.2020.06.025](#)]
- 47 **Sanai FM**, Keeffe EB. Liver biopsy for histological assessment: The case against. *Saudi J Gastroenterol* 2010; **16**: 124-132 [PMID: [20339187](#) DOI: [10.4103/1319-3767.61244](#)]
- 48 **Kleiner DE**, Brunt EM, Van Natta M, Behling C, Contos MJ, Cummings OW, Ferrell LD, Liu YC, Torbenson MS, Unalp-Arida A, Yeh M, McCullough AJ, Sanyal AJ; Nonalcoholic Steatohepatitis Clinical Research Network. Design and validation of a histological scoring system for nonalcoholic fatty liver disease. *Hepatology* 2005; **41**: 1313-1321 [PMID: [15915461](#) DOI: [10.1002/hep.20701](#)]
- 49 **Merriman RB**, Ferrell LD, Patti MG, Weston SR, Pabst MS, Aouizerat BE, Bass NM. Correlation of paired liver biopsies in morbidly obese patients with suspected nonalcoholic fatty liver disease. *Hepatology* 2006; **44**: 874-880 [PMID: [17006934](#) DOI: [10.1002/hep.21346](#)]
- 50 **Pournik O**, Alavian SM, Ghalichi L, Seifizarei B, Mehrmouh L, Aslani A, Anjarani S, Eslami S. Inter-observer and Intra-observer Agreement in Pathological Evaluation of Non-alcoholic Fatty Liver Disease Suspected Liver Biopsies. *Hepat Mon* 2014; **14**: e15167 [PMID: [24497882](#) DOI: [10.5812/hepatmon.15167](#)]



Published by **Baishideng Publishing Group Inc**
7041 Koll Center Parkway, Suite 160, Pleasanton, CA 94566, USA

Telephone: +1-925-3991568

E-mail: bpgoffice@wjgnet.com

Help Desk: <https://www.f6publishing.com/helpdesk>

<https://www.wjgnet.com>

