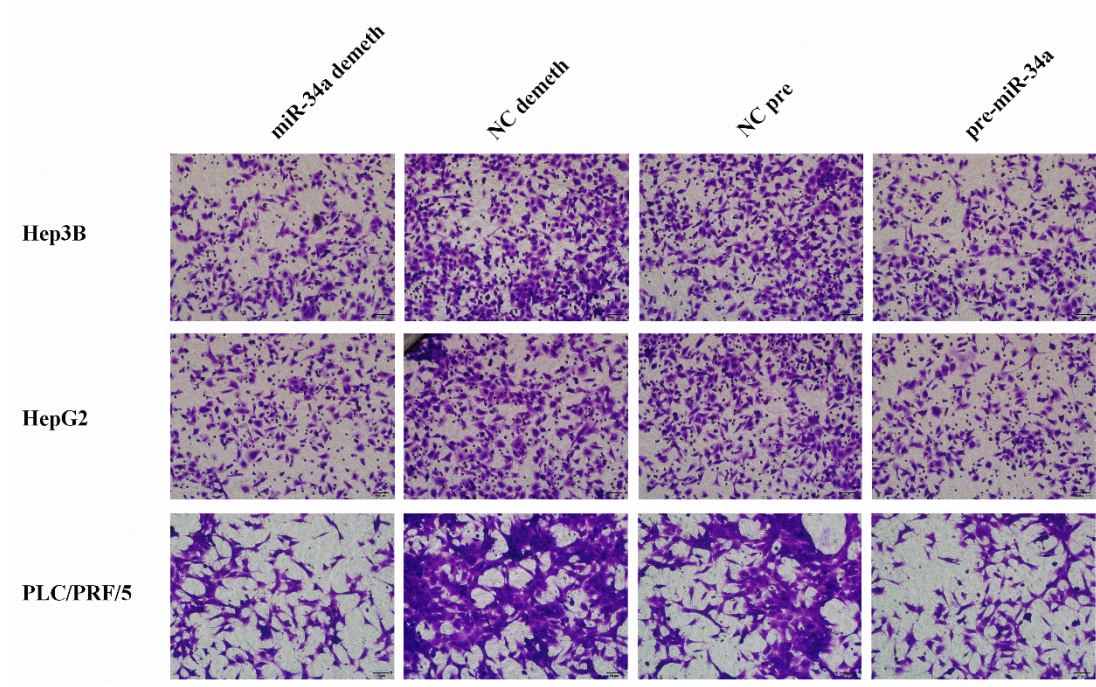
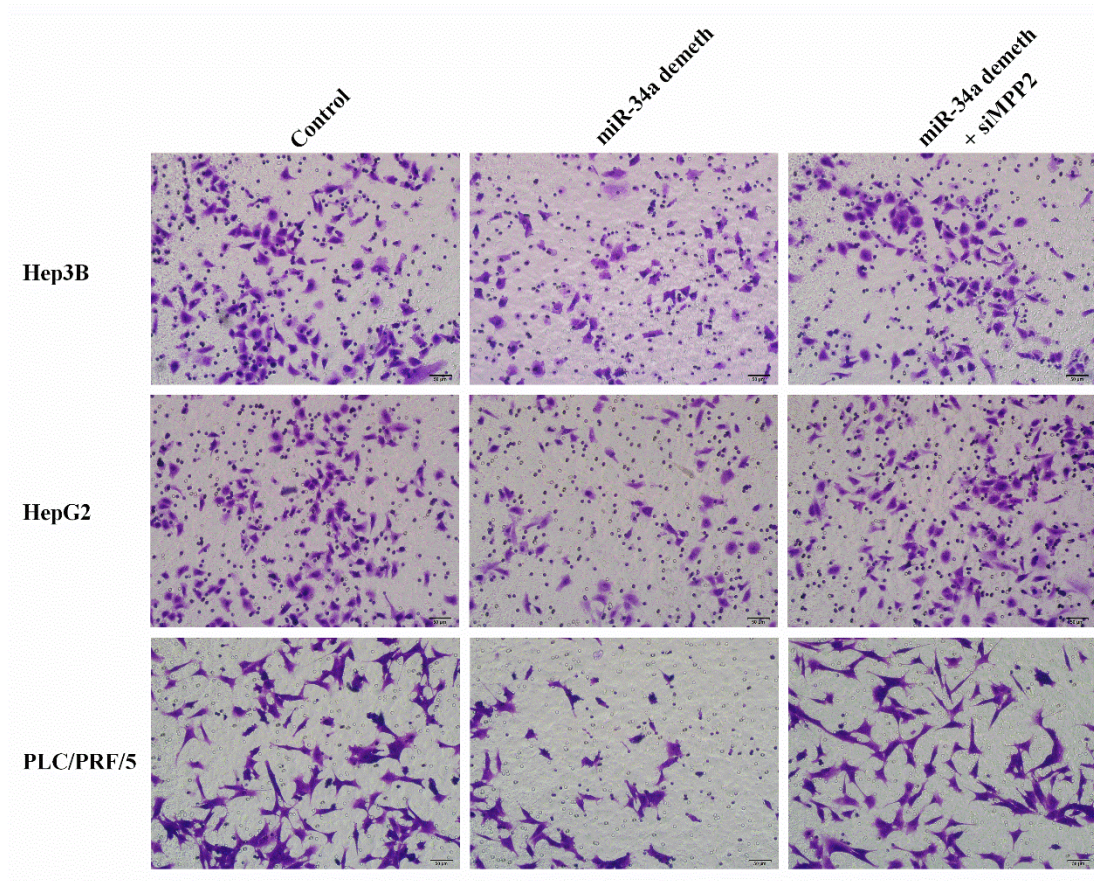


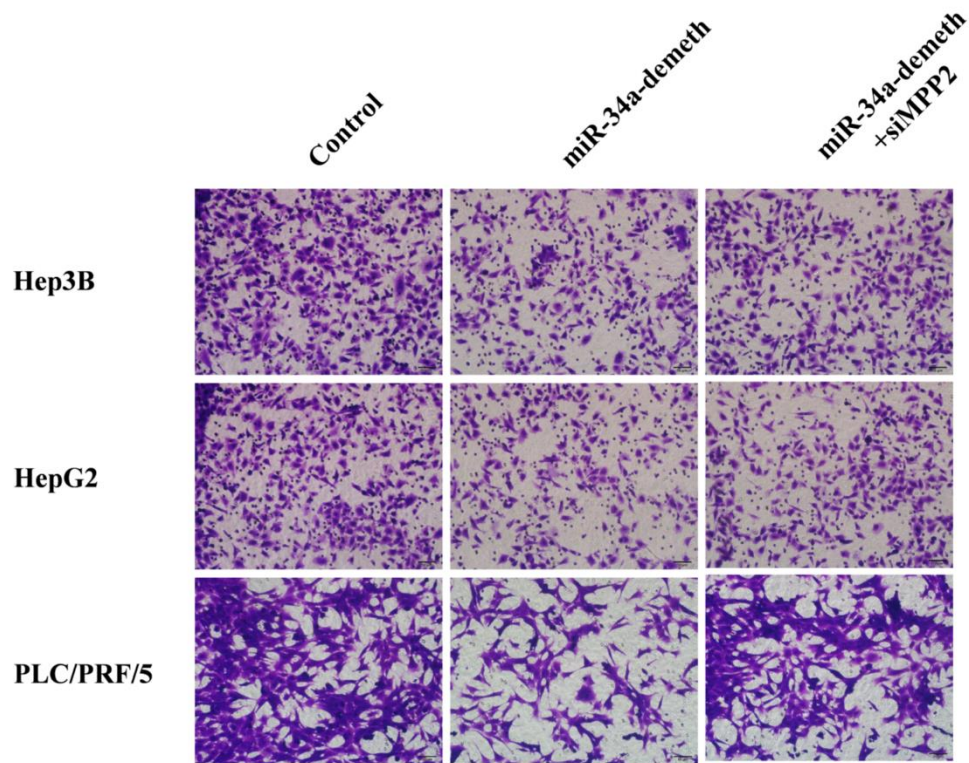
Supplementary Figure 1 Invasion of different groups. In this figure, there was the invasion of three kinds of cells after different treatment. Hep3B, HepG2 and PLC/PRF/5 were liver cancer cells chosen in this study. miR-34a-demeth meant that cells were treated with 5'-Az, pre-miR-34a meant that cells was done with miR-34a mimcs, and NC demeth and NC pre were the NC control. Cells were observed using a light microscopy at 100x magnification.



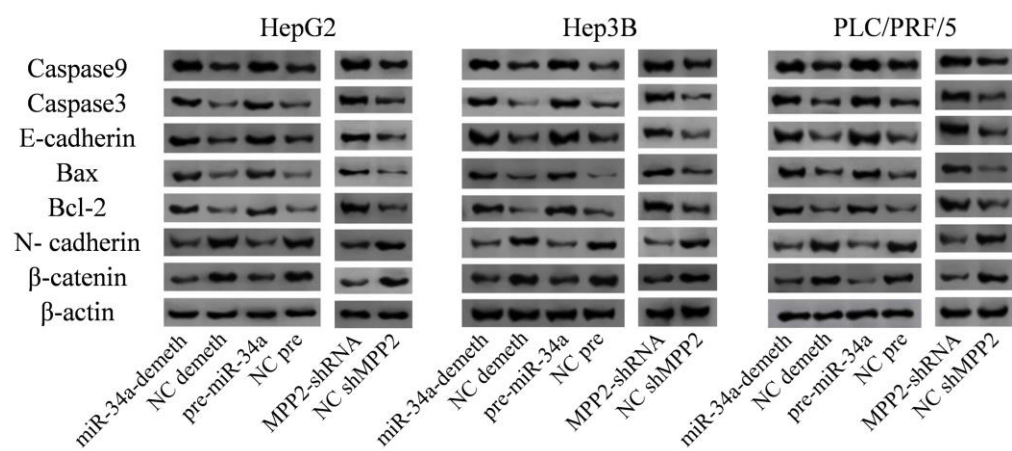
Supplementary Figure 2 Migration of different groups. In this figure, there was the migration of three kinds of cells after different treatment. Hep3B, HepG2 and PLC/PRF/5 were liver cancer cells chosen in this study. miR-34a-demeth meant that cells were treated with 5'-Az, pre-miR-34a meant that cells was done with miR-34a mimcs, and NC demeth and NC pre were the NC control. Cells were observed using a light microscopy at 100x magnification.



Supplementary Figure 3 Invasion of rescue experiment. In this figure, there was the invasion of three kinds of cells after different treatment. Hep3B, HepG2 and PLC/PRF/5 were liver cancer cells chosen in this study. miR-34a-demeth meant that cells were treated with 5'-Az, miR-34a demeth+si MPP2 meant that cells were treated with 5'-Az and MPP2 siRNA, and Control was the control group. Cells were observed using a light microscopy at 100x magnification.



Supplementary Figure 4 Migration of rescue experiment. In this figure, there was the migration of three kinds of cells after different treatment. Hep3B, HepG2 and PLC/PRF/5 were liver cancer cells chosen in this study. miR-34a-demeth meant that cells were treated with 5'-Az, miR-34a demeth+si MPP2 meant that cells were treated with 5'-Az and MPP2 siRNA, and Control was the control group. Cells were observed using a light microscopy at 100x magnification.



Supplementary Figure 5 Western blot.