

World Journal of *Gastroenterology*

World J Gastroenterol 2021 May 21; 27(19): 2251-2433



EDITORIAL

- 2251** Celiac Disease in Asia beyond the Middle East and Indian subcontinent: Epidemiological burden and diagnostic barriers
Poddighe D, Abdukhakimova D

FRONTIER

- 2257** Biomarkers in autoimmune pancreatitis and immunoglobulin G4-related disease
Hara A, Watanabe T, Minaga K, Yoshikawa T, Kamata K, Kudo M

REVIEW

- 2270** Receptor for advanced glycation end-products axis and coronavirus disease 2019 in inflammatory bowel diseases: A dangerous liaison?
Rojas A, Schneider I, Lindner C, González I, Morales MA
- 2281** Individualized treatment options for patients with non-cirrhotic and cirrhotic liver disease
Hartl L, Elias J, Prager G, Reiberger T, Unger LW

MINIREVIEWS

- 2299** Clinical characteristics and outcomes of patients with hepatic angiomyolipoma: A literature review
Calame P, Tyrode G, Weil Verhoeven D, Félix S, Klompenhouwer AJ, Di Martino V, Delabrousse E, Thévenot T
- 2312** Risk of hepatitis B virus reactivation in patients with autoimmune diseases undergoing non-tumor necrosis factor-targeted biologics
Akiyama S, Cotter TG, Sakuraba A
- 2325** Burden of venous thromboembolism in patients with pancreatic cancer
Frere C
- 2341** Pathophysiological mechanisms underlying gastrointestinal symptoms in patients with COVID-19
Jin B, Singh R, Ha SE, Zogg H, Park PJ, Ro S

ORIGINAL ARTICLE

Retrospective Cohort Study

- 2353** Risk factors and prognostic value of acute severe lower gastrointestinal bleeding in Crohn's disease
Yoon J, Kim DS, Kim YJ, Lee JW, Hong SW, Hwang HW, Hwang SW, Park SH, Yang DH, Ye BD, Byeon JS, Myung SJ, Yang SK

Retrospective Study

- 2366** Changes in the nutritional status of nine vitamins in patients with esophageal cancer during chemotherapy
Liang LQ, Meng LL, Cai BN, Cui ZP, Ma N, Du LH, Yu W, Qu BL, Feng SQ, Liu F

Observational Study

- 2376** Effects of sepsis and its treatment measures on intestinal flora structure in critical care patients
Yang XJ, Liu D, Ren HY, Zhang XY, Zhang J, Yang XJ
- 2394** Gut microbiota dysbiosis in Chinese children with type 1 diabetes mellitus: An observational study
Liu X, Cheng YW, Shao L, Sun SH, Wu J, Song QH, Zou HS, Ling ZX

META-ANALYSIS

- 2415** Selection of first-line systemic therapies for advanced hepatocellular carcinoma: A network meta-analysis of randomized controlled trials
Han Y, Zhi WH, Xu F, Zhang CB, Huang XQ, Luo JF

ABOUT COVER

Editorial Board Member of *World Journal of Gastroenterology*, Pietro Fusaroli, MD, Associate Professor, Department of Medical and Surgical Sciences, University of Bologna/Hospital of Imola, Via Montericco 4, Imola (BO) 40026, Italy. pietro.fusaroli@unibo.it

AIMS AND SCOPE

The primary aim of *World Journal of Gastroenterology* (WJG, *World J Gastroenterol*) is to provide scholars and readers from various fields of gastroenterology and hepatology with a platform to publish high-quality basic and clinical research articles and communicate their research findings online. WJG mainly publishes articles reporting research results and findings obtained in the field of gastroenterology and hepatology and covering a wide range of topics including gastroenterology, hepatology, gastrointestinal endoscopy, gastrointestinal surgery, gastrointestinal oncology, and pediatric gastroenterology.

INDEXING/ABSTRACTING

The WJG is now indexed in Current Contents®/Clinical Medicine, Science Citation Index Expanded (also known as SciSearch®), Journal Citation Reports®, Index Medicus, MEDLINE, PubMed, PubMed Central, and Scopus. The 2020 edition of Journal Citation Report® cites the 2019 impact factor (IF) for WJG as 3.665; IF without journal self cites: 3.534; 5-year IF: 4.048; Ranking: 35 among 88 journals in gastroenterology and hepatology; and Quartile category: Q2. The WJG's CiteScore for 2019 is 7.1 and Scopus CiteScore rank 2019: Gastroenterology is 17/137.

RESPONSIBLE EDITORS FOR THIS ISSUE

Production Editor: *Yan-Jie Ma*; Production Department Director: *Xiang Li*; Editorial Office Director: *Ze-Mao Gong*.

NAME OF JOURNAL

World Journal of Gastroenterology

ISSN

ISSN 1007-9327 (print) ISSN 2219-2840 (online)

LAUNCH DATE

October 1, 1995

FREQUENCY

Weekly

EDITORS-IN-CHIEF

Andrzej S Tarnawski, Subrata Ghosh

EDITORIAL BOARD MEMBERS

<http://www.wjgnet.com/1007-9327/editorialboard.htm>

PUBLICATION DATE

May 21, 2021

COPYRIGHT

© 2021 Baishideng Publishing Group Inc

INSTRUCTIONS TO AUTHORS

<https://www.wjgnet.com/bpg/gerinfo/204>

GUIDELINES FOR ETHICS DOCUMENTS

<https://www.wjgnet.com/bpg/GerInfo/287>

GUIDELINES FOR NON-NATIVE SPEAKERS OF ENGLISH

<https://www.wjgnet.com/bpg/gerinfo/240>

PUBLICATION ETHICS

<https://www.wjgnet.com/bpg/GerInfo/288>

PUBLICATION MISCONDUCT

<https://www.wjgnet.com/bpg/gerinfo/208>

ARTICLE PROCESSING CHARGE

<https://www.wjgnet.com/bpg/gerinfo/242>

STEPS FOR SUBMITTING MANUSCRIPTS

<https://www.wjgnet.com/bpg/GerInfo/239>

ONLINE SUBMISSION

<https://www.f6publishing.com>



Clinical characteristics and outcomes of patients with hepatic angiomyolipoma: A literature review

Paul Calame, Gaëlle Tyrode, Delphine Weil Verhoeven, Sophie Félix, Anne Julia Klompenhouwer, Vincent Di Martino, Eric Delabrousse, Thierry Thévenot

ORCID number: Paul Calame 0000-0002-9832-9837; Gaëlle Tyrode 0000-0002-4714-2124; Delphine Weil Verhoeven 0000-0002-9648-813X; Sophie Félix 0000-0001-6330-7788; Anne Julia Klompenhouwer 0000-0002-6740-3862; Vincent Di Martino 0000-0002-2022-690X; Eric Delabrousse 0000-0003-1498-6248; Thierry Thévenot 0000-0003-3974-2784.

Author contributions: Thévenot T designed the research; Thévenot T, Calame P, and Félix S analyzed the data; Thévenot T, Calame P and Tyrode G wrote the paper; Thévenot T and Calame P made critical revisions related to important content of the revised manuscript; Weil Verhoeven D, Klompenhouwer AJ, Di Martino V, Delabrousse E and Thévenot T provided the final approval of the version to be published.

Conflict-of-interest statement: No conflicts of interest exist.

Open-Access: This article is an open-access article that was selected by an in-house editor and fully peer-reviewed by external reviewers. It is distributed in accordance with the Creative Commons Attribution NonCommercial (CC BY-NC 4.0) license, which permits others to distribute, remix, adapt, build

Paul Calame, Eric Delabrousse, Department of Radiology, Jean Minjoz University Hospital, Besançon 25030, France

Gaëlle Tyrode, Delphine Weil Verhoeven, Vincent Di Martino, Thierry Thévenot, Department of Hepatology, Jean Minjoz University Hospital, Besançon 25030, France

Sophie Félix, Department of Pathology, Jean Minjoz University Hospital, Besançon 25000, France

Anne Julia Klompenhouwer, Department of Surgery, Erasmus University Medical Center, Rotterdam PO Box 2040, The Netherlands

Corresponding author: Thierry Thévenot, PhD, Professor, Department of Hepatology, Jean Minjoz University Hospital, 3 Boulevard A. Fleming, Besançon 25030, France.
tthevenot@chu-besancon.fr

Abstract

First reported in 1976, hepatic angiomyolipoma (HAML) is a rare mesenchymal liver tumor occurring mostly in middle-aged women. Diagnosis of the liver mass is often incidental on abdominal imaging due to the frequent absence of specific symptoms. Nearly 10% of HAMLs are associated with tuberous sclerosis complex. HAML contains variable proportions of blood vessels, smooth muscle cells and adipose tissue, which renders radiological diagnosis hazardous. Cells express positivity for HMB-45 and actin, thus these tumors are integrated into the group of perivascular epithelioid cell tumors. Typically, a HAML appears on magnetic resonance imaging (or computed tomography scan) as a hypervascular solid tumor with fatty areas and with washout, and can easily be misdiagnosed as other liver tumors, particularly hepatocellular carcinoma. The therapeutic strategy is not clearly defined, but surgical resection is indicated for symptomatic patients, for tumors showing an aggressive pattern (*i.e.*, changes in size on imaging or high proliferation activity and atypical epithelioid pattern on liver biopsy), for large (> 5 cm) biopsy-proven HAML, and if doubts remain on imaging or histology. Conservative management may be justified in other conditions, since most cases follow a benign clinical course. In summary, the correct diagnosis of HAML is challenging on imaging and relies mainly on pathological findings.

Key Words: Angiomyolipoma; Liver; Tuberous sclerosis complex; Imaging; Pathology;

upon this work non-commercially, and license their derivative works on different terms, provided the original work is properly cited and the use is non-commercial. See: <http://creativecommons.org/licenses/by-nc/4.0/>

Manuscript source: Unsolicited manuscript

Specialty type: Gastroenterology and hepatology

Country/Territory of origin: France

Peer-review report's scientific quality classification

Grade A (Excellent): 0

Grade B (Very good): B

Grade C (Good): C

Grade D (Fair): 0

Grade E (Poor): 0

Received: October 27, 2020

Peer-review started: October 27, 2020

First decision: December 18, 2020

Revised: December 31, 2020

Accepted: March 18, 2021

Article in press: March 18, 2021

Published online: May 21, 2021

P-Reviewer: Alshami A, Lan C

S-Editor: Gao CC

L-Editor: Webster JR

P-Editor: Liu JH



Potentially malignant

©The Author(s) 2021. Published by Baishideng Publishing Group Inc. All rights reserved.

Core Tip: Hepatic angiomyolipoma (HAML) is a rare, but not exceptional, mesenchymal liver tumor. HAML contains variable proportions of blood vessels, smooth muscle cells and adipose tissue, which renders its radiological diagnosis challenging. In most cases, this tumor follows a benign clinical course but more aggressive behavior may complicate management, which remains poorly codified. This review presents the main demographic and histological characteristics of HAML, summarizes reported cases of HAML with spontaneous rupture and aggressive behavior, and finally proposes a pragmatic algorithm for the management of HAML based on the most recent knowledge.

Citation: Calame P, Tyrode G, Weil Verhoeven D, Félix S, Klompenhouwer AJ, Di Martino V, Delabrousse E, Thévenot T. Clinical characteristics and outcomes of patients with hepatic angiomyolipoma: A literature review. *World J Gastroenterol* 2021; 27(19): 2299-2311

URL: <https://www.wjgnet.com/1007-9327/full/v27/i19/2299.htm>

DOI: <https://dx.doi.org/10.3748/wjg.v27.i19.2299>

INTRODUCTION

Angiomyolipoma (AML) is a solid mesenchymal tumor, mainly described in the kidney, and belongs to the group of perivascular epithelioid cell tumors (PEComas)[1]. Hepatic localization of AML, described for the first time in 1976[2], is rare, since only around 600 cases were reported after an exhaustive search of the literature up to the year 2017[3]. Hepatic AML (HAML) poses a veritable diagnostic challenge in radiological terms, especially when fat content is low, because this type of tumor may appear as a hypervascular tumor associated with a washout phase that mimics other, more common hypervascular hepatic tumors, such as hepatocellular carcinoma[4-7]. The natural course of HAML is mostly benign, although several cases have been reported to exhibit aggressive behavior with metastasis or recurrence after surgery[8-24], or spontaneous rupture[8,25-33]. These rare but dramatic observations unavoidably compound the complexity of managing patients with HAML. Due to its difficult radiological diagnosis, its potentially aggressive behavior, and its poorly codified management, we aimed to analyze the recent literature regarding this rare, but not exceptional liver tumor, and to provide a pragmatic algorithm for its management according to the most recent knowledge.

PATIENT CHARACTERISTICS

HAML is a tumor usually occurring in a non-cirrhotic liver, and mainly affects middle-aged women. A retrospective analysis of the literature carried out up to 2016 identified 292 patients with one or more HAML, and most of them (nearly 74%) were women, with a median age ranging between 24 years and 53 years across studies[3]. HAML mainly locates in the right liver (60% of cases[7]), is unique in 84% of cases, and median size ranges from 2 cm to 12.7 cm[3,34]. This type of tumor is often detected incidentally during medical check-ups (42% to 72% of cases) since most subjects are asymptomatic[3,34,35]. Symptoms revealing HAML may include abdominal pain or discomfort, bloating, weight loss or, more rarely, discovery of an abdominal mass on palpation[35]. A few cases of spontaneous rupture of HAML have been reported (Table 1)[8,25-33]. Tumor size (≥ 4 cm) and pregnancy are two recognized conditions favoring rupture of renal AML[36,37], but the small number of reported cases of HAML rupture precludes identification of predictors of rupture in the liver. In the ten cases reported in Table 1, tumor size was usually large, between 5 cm and 12 cm (except for one case due to an inflammatory variant of HAML with a subcapsular location[32]), and there was no age preference (mean age: 48 years; range: 22 years to 77 years). All patients underwent emergent or delayed resection of the tumor,

Table 1 Cases of spontaneous rupture of hepatic angiomyolipoma

Ref.	Sex	Age, yr	Symptoms	Abdominal radiological findings	Treatment	Outcomes
Huber <i>et al</i> [25] 1996	F	22	Hemorrhagic shock with clinical symptoms of acute abdomen	CT scan: multiple tumors of the liver (the largest in segment III measured 8 cm) and both kidneys and a splenic lesion with a diameter of 4 cm	Surgical resection of segments II and III	Postoperative course was uneventful. Discharge from hospital 12 d later
Guidi <i>et al</i> [26] 1997	M	74	Sudden onset of upper-quadrant pain	CT scan: liver tumor of 10 cm × 8 cm in the segments I and V and another small mass of 4 cm × 3 cm in segment IV. Fluid was present in the upper abdominal compartments	Surgical resection of the hemorrhagic hepatic mass	Postoperative course was uneventful. Discharge from hospital 8 d later
Tsui <i>et al</i> [27] 1999	F	41	Acute rupture of a subcapsular tumor	9 cm	Surgical resection	Patient in healthy condition 4 yr after surgery
Zhou <i>et al</i> [28] 2008	ND	ND	Hemorrhagic shock	Ultrasonography showed a 5-cm "cavernous hemangioma" in the right hepatic lobe	Emergency laparotomy for hemostasis	No tumor recurrence or metastasis was found during follow-up of 2-3 yr
Ding <i>et al</i> [8] 2011	F	56	ND	A rupture of the tumor measuring 6 cm × 6 cm in segment VI was confirmed by emergent laparotomy	Liver suture followed by segmentectomy	No serious morbidity in the postoperative course
Occhionorelli <i>et al</i> [29] 2013	F	25	Sudden onset of abdominal upper-quadrant pain and hypotension, after two recent syncopal episodes	CT scan showed a hepatic tumor in the left lobe (8.6 cm × 7.2 cm) with suspected peritoneal blood leakage	Hemorrhage initially managed by manual compression, followed by deep and pro-coagulant tissue adhesives. After 48 hours, the patient underwent left-liver lobectomy	Postoperative course was uneventful. Discharge from hospital 9 d later
Aoki <i>et al</i> [30] 2014	F	70	Sudden onset of back pain on the right side	CT scan: hepatic tumor in segment VII measuring 7 cm in diameter accompanied by subcapsular hematoma with extravasation	Transcatheter arterial embolization. Right hepatic lobectomy was carried out 39 d later	Five days after surgery, she had thrombi in the left popliteal vein and the left pulmonary artery. Insertion of an IVC filter which was removed due to sepsis. She was discharged 24 d after surgery. There was no recurrence 42 mo following surgery
Tajima <i>et al</i> [31] 2014	M	38	Upper abdominal pain	CT scan showed a tumor measuring 10.5 cm × 9.5 cm × 7 cm in the posterior segment of the right hepatic lobe that had ruptured into the space between the liver and the diaphragm	Transcatheter arterial embolization was performed. The patient developed fever and the hematoma surrounding the liver was drained. No infection was confirmed but right lobectomy was performed	ND
Kai <i>et al</i> [32] 2015	F	77	Sudden abdominal pain and transient loss of consciousness	CT scan: hemoperitoneum with subcapsular hematoma at the left lobe and a hepatic nodule measuring 2.3 cm in diameter in segment II	Conservative initial treatment with periodic imaging studies. Transcatheter arterial chemoembolization was performed because a diagnosis of HCC was suggested. Surgical resection (laparoscopic left lateral segmentectomy) was performed 4 mo later	Postoperative course was uneventful. Discharge from hospital 7 d later No signs of recurrence at 3.5 yr after surgery
Kim <i>et al</i> [33] 2017	M	31	Sudden onset severe abdominal pain in the right upper quadrant area	CT scan: Mass of approximately 12 cm in the right hepatic lobe with hemorrhage along the perihepatic space	Emergent angiography with embolization. Hepatic resection was performed 15 d later	Postoperative course was uneventful

F: Female; M: Male. ND: Not determined; CT: Computed tomography; HCC: Hepatocellular carcinoma; IVC: Inferior vena cava.

sometimes preceded by preoperative embolization. Routine laboratory tests (including liver tests) are usually normal, as are serum tumor markers (alpha-fetoprotein, carcinoembryonic antigen and carbohydrate antigen 19-9[38].

The association between tuberous sclerosis complex (TSC) and renal AML, first described in 1911[39], is observed in 50% of cases, while the association between TSC and HAML is only observed in 5% to 15% of cases[3,40]. TSC is an autosomal dominant genetic disorder with a birth incidence of 1:6000[41], although sporadic cases due to *de novo* mutation are the most frequent presentation in the absence of a family history. TSC results from a mutation of *TSC1* or *TSC2*, which code for hamartin and tuberlin, respectively[42]. These proteins are critical regulators of cell growth and proliferation, potentially through their upstream modulator, mammalian target of rapamycin (mTOR). Loss of function or dysfunction of either protein results in the development of hamartomas in numerous organ systems, including the brain, kidneys, heart and liver[43]. In patients with TSC, HAML is frequently associated with renal AML. A recent retrospective study showed that among 25 patients with HAML, 88% also had renal AML, and *TSC2* patients had a higher frequency of HAML compared to *TSC1* patients (18% *vs* 5%; $P = 0.037$)[42]. In contrast to previous reports, the predominance of female gender observed in patients with HAML but no TSC was not observed in patients with the TSC-HAML association[42,44].

IMMUNOHISTOLOGICAL CHARACTERISTICS OF HAML

Histological examination is the gold standard for HAML diagnosis, since diagnosis by imaging is difficult. Of note, even histological analysis of liver biopsy was shown to misdiagnose HAML in about 15% of cases in a recent multicenter study[34]. The World Health Organization defines PEComas as “mesenchymal tumors containing distinctive perivascular epithelioid cells”. AML, which belongs to the PEComa group, is composed of adipose tissue, smooth muscle and vessels with dystrophic walls (Figure 1). The histological and immunohistochemical characteristics class HAML in the group of PEComas, an entity that brings together tumors of different histology, but with a common immunohistochemical signature, namely co-expression of melanocytic and muscle markers (see below)[1,40,45]. The PEComa family includes AML, clear cell “sugar” tumor of the lung, lymphangioliomyomatosis (LAM), and a variety of unusual visceral, intra-abdominal, and soft tissue/bone tumors, described under the term “clear cell myomelanocytic tumor of the falciform ligament/Ligamentum teres”[46]. There is a strong association between AML and TSC, and between LAM and TSC[47], although the link is less marked for other members of the PEComa family[46].

Perivascular epithelioid cells are characterized by their perivascular location, often with a radial arrangement of cells around vessels. Typically, these cells are mostly epithelioid when they are just around the vessels, whereas spindle cells resembling smooth muscle are seen further away from the vessels. In the liver, the aspect is most often only epithelioid without spindle cells. Adipose cells are usually found distant from the blood vessels. Wide variation is seen in the relative proportion of epithelioid, spindle, and lipid-distended cells. Depending on the relative proportion of these different tissues, there are, on the one hand, conventional AMLs with a predominance of lipomatous or myomatous cells or vessels, and, on the other hand, epithelioid AMLs containing at least 10% epithelioid cells[48]. Mixed and myomatous AMLs are the most frequent (respectively 36% and 42% of the 151 HAML cases with informative data)[3]. Another subtype of HAML, namely inflammatory HAML, has also been recognized, although only 14 cases have been reported in the English-language literature[49]. Overall, this tumor is characterized by inflammatory infiltration exceeding 50% of tumor area, and the main types of inflammatory cells are lymphocytes (100%), plasma cells (93%) and histiocytes (71%)[49].

Macroscopically, HAML is well circumscribed, unencapsulated, smooth and brownish in color; however, the existence of hemorrhage or intra-tumor necrosis can change its appearance. On microscopic examination, cells typically have clear or slightly eosinophilic cytoplasm, small, central, round or oval nuclei, with a small nucleolus. “Atypical” AML presents cytological atypia, a multinucleated nucleus, focal necrosis and an increase in the number of mitoses[48].

By immunohistochemistry, these tumors are positive for both melanocytic markers (HBM-45 and melan-A are the more sensitive markers) and smooth muscle markers (actin and/or desmin) with variable extent of staining[46,50]. HBM-45 is the most specific marker of AML[38]. Actin non-immunoreactivity does not exclude a tumor from the PEComa group[51]. Classically, AML does not express epithelial markers (like cytokeratin), S100 protein or alpha-fetoprotein[52]. Estrogen and progesterone receptors are frequently positive in classic renal AML but are only rarely positive in

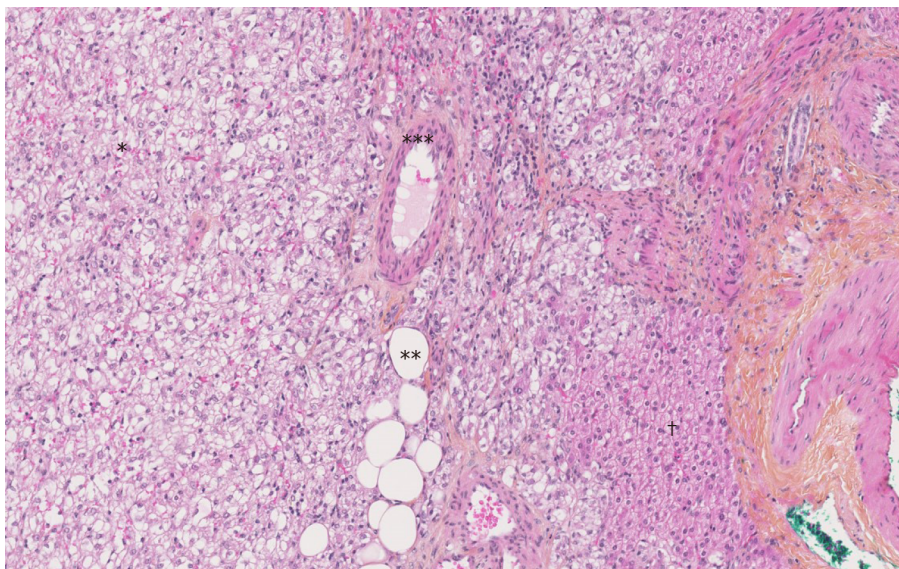


Figure 1 The Hematoxylin-Eosin-Saffron staining image of hepatic angiomyolipoma. There are three components of hepatic angiomyolipoma: vessel (*), adipocytes (**) and numerous epithelioid cells (***). There are fewer hepatocytes (†) (magnification $\times 10$).

extrarenal PEComas, including HAML, suggesting the absence of the role of sex hormones in the pathogenesis and growth of HAML, despite a clear predominance in women[45,53].

There are numerous possible differential diagnoses of PEComas depending on the location and the predominant tissue composing the tumor. Given their uniform expression of melanocytic markers, PEComas may be confused with both conventional melanoma and clear cell sarcoma, but these latter typically have strong expression of S100 protein, and do not stain with smooth muscle actin. Due to its preferential abdominal location, the presence of epithelioid and spindle cells, and the occasional positive KIT (CD117) staining in HAML, the diagnosis of gastrointestinal stromal tumor is sometimes discussed. Depending on the size of the contingent of epithelioid cells, spindle-shaped cells or adipocytes, AML can also be confused with carcinoma, smooth muscle neoplasm or adipocytic tumor[45,54].

PROGNOSIS

The scarcity of PEComas precludes the identification of robust criteria to discriminate benign AML from other tumors with more aggressive behavior. The first description of a likely “malignant” HAML is recent[55], and although the authors do not clearly indicate the malignant nature of this tumor, the reported characteristics (*i.e.*, large size, cytological atypia and presence of necrosis) and the tumor-related death of the patient are robust arguments in favor of a “malignant” case. From a series of 24 PEComas of the soft tissue and gynecologic tract (not including AML) with a median follow-up of 30 mo (range: 10-84), Folpe *et al*[46] observed 3 local recurrences and 5 distant metastases (8/24, 33% of cases), 2 deaths (8%), 4 patients (17%) alive with metastatic or unresectable local disease, and 18 patients (75%) alive with no evidence of disease. A combined analysis of these 24 cases plus 45 other reported cases in the literature with sufficient available follow-up information identified the following variables associated with an increased risk of recurrence or metastasis: tumor size greater than 5 cm, infiltrative growth pattern, high nuclear grade, necrosis, and mitotic activity $> 1/50$ high power field. Consequently, these authors developed a provisional classification of PEComas with increasing aggressive potential (Table 2). Cases of HAML with aggressive behavior are reported in Table 3[8-24]. Regarding HAML, it is mainly the epithelioid type that confers a risk of aggressive behavior[34]. In the review published in 2017, the mortality rate associated with HAML was 0.8%[3].

Imaging findings

The imaging features of HAML vary greatly depending on the highly variable proportion of fat, smooth muscle and vascular elements. Diagnosis can be challenging, and depends mainly on the amount of fat present, which is the key to HAML

Table 2 Classification of perivascular epithelioid cell tumors according to their malignant potential[1,27]

Classification	Criteria
Benign	No worrisome features: (1) Tumor size < 5 cm; (2) No infiltration; (3) Non-high nuclear grade and cellularity; (4) Mitotic activity $\leq 1/50$ HPF; (5) No necrosis; and (6) No vascular invasion
Uncertain malignant potential	Tumor with: (1) Pleomorphism/multinucleated giant cells only; or (2) Size > 5 cm only
Aggressive behavior	Two or more worrisome features: (1) Size > 5 cm; (2) Peripheral infiltration; (3) High nuclear grade and cellularity; (4) Mitotic activity > 1/50 HPF; (5) Ischemic tumor necrosis for large tumor; and (6) Vascular invasion
According to the WHO classification of tumors[1]	As with GISTs, the main predictors of a risk of metastatic behavior are marked nuclear atypia, diffuse pleomorphism and mitotic activity of more than 1 mitosis per 1 mm ²

GIST: Gastrointestinal stromal tumor; HPF: High-power field.

diagnosis. On ultrasound, the lesion is usually well circumscribed, hyperechoic or mixed echoic and after injection of ultrasound contrast, presents rapid enhancement in the arterial phase compared to the adjacent liver. In the portal and delayed phase, HAML can display either hypo, iso or hyperenhancement[4]. Computed tomography (CT) shows a hypodense tumor with fatty areas within the lesion (density around -50 HU). Classically, this solid tumor is hypervascular (Figure 2) with wash-out in the portal and late portal phase [CT or magnetic resonance imaging (MRI)]. HAML with few or no vessels on histologic examination show persistent portal and late-phase enhancement, whereas HAML with richly vascularized tissue is more likely to show wash-out[5]. The tumor signal on MRI is hyperintense in T2 weighted sequences and variable in T1 weighted sequences. MRI is the most sensitive imaging technique to detect liver fat using in-phase and opposed-phase T1 gradient echo sequences. The drop-out signal within a liver lesion on the opposed-phase sequences indicates the presence of fat within the lesion (Figure 3A and B). The imaging features on MRI after injection of contrast medium are similar to those observed on CT scan. When using a hepatocyte specific agent (gadoxetic acid or gadobenate dimeglumine), the lesion shows a hyposignal in the hepatobiliary phase (Figure 4).

Data regarding HAML evaluation using fluorine-18-fluorodeoxyglucose positron emission tomography (¹⁸F-FDG-PET) are limited. FDG uptake in HAML is variable and the value of ¹⁸F-FDG-PET for diagnosing or managing this type of tumor is unclear[56].

Given the imaging characteristics of HAML (hypervascular lesion with a fat component in a healthy liver and with frequent wash-out), differential diagnoses are benign hepatocytic tumors (steatotic or telangiectasia adenoma, fat focal nodular hyperplasia) and malignant hepatocytic tumors (mainly hepatocellular carcinoma). When the diagnosis is challenging, especially with hepatocellular carcinoma, the absence of a capsule and the visualization of a drainage vein are two useful radiological features that can be helpful for HAML diagnosis when they are present[6].

MANAGEMENT OF HAML

Due to its rarity, the diagnosis of HAML on imaging (and even histological examination[34]) is difficult. Consequently, the clinical management of HAML patients should take place in expert centers for a multidisciplinary work-up involving radiologists, pathologists and hepatologists. Obtaining a liver biopsy is strongly advised to better balance the risk of surgery (resection of centrohepatic tumor will be at higher risk, for instance) against the risk of tumor-related complications. Thus, in the presence of asymptomatic HAML, without cytological atypia on biopsy, but at high risk of complicated resection, regular radiological monitoring will be preferred[34].

Analysis of the literature shows that the majority of patients are treated with surgical resection (84% and 76% of patients in two large case series[3,34]). For other patients, regular radiological monitoring is justified by the uncertainty surrounding the risk of HAML progression. Although the risk of tumor recurrence after resection or metastases has rarely been described, the identification of radiological and especially histological factors predicting an unfavorable course (Table 1) is essential for a collegial therapeutic decision. Furthermore, patient compliance with regular radiological monitoring will also be an important argument in decision-making[3,35].

Table 3 Reported cases of hepatic angiomyolipoma with aggressive behavior

Ref.	Sex	Age, yr	Size	Types	Treatment	Duration of follow-up	Outcome
Croquet <i>et al</i> [9] 2000	F	16	19 cm × 12 cm × 8 cm	Epithelioid	SR	6 yr	Recurrence in the liver, associated with renal angiomyolipoma
Dalle <i>et al</i> [10] 2000	F	70	15 cm	Epithelioid	SR	5 mo	Recurrence in the liver with a lesion measuring 15 cm and presence of multiple metastases in the liver
Flemming <i>et al</i> [11] 2000	F	51	2 nodules: 0.5 cm and 15 cm	Epithelioid	SR	3 yr	Recurrence in the right hepatic lobe and presence of multiple metastases
McKinney <i>et al</i> [12] 2005	F	14	11 cm × 7 cm × 8 cm	NS	SR, interferon α	1 yr	Recurrence with a hepatic lesion measuring 9 cm × 6 cm × 14 cm, appearance of lymph nodes and hepatic metastases. Death after disease progression
Parfitt <i>et al</i> [13] 2007	F	60	14 cm × 11 cm	Epithelioid	SR	9 yr	Recurrence in the liver and appearance of metastases in the trapezius muscle, the left lung and the tail of the pancreas
Yang <i>et al</i> [14] 2007	F	37	13 cm × 9 cm × 9 cm	Classic	SR	14 mo	Recurrence in the right hepatic lobe 6 months after SR, appearance of pulmonary metastases 11 mo after SR and death occurred at 14 mo
Deng <i>et al</i> [15] 2008	M	30	18 cm × 14 cm	Classic	SR, Chemotherapy	3 yr and 4 mo	Recurrence with a hepatic lesion measuring 11 cm and metastases in pancreatic tail and portal vein thrombosis 3 yr after SR. Chemotherapy was initiated but 4 mo later pulmonary metastases appeared. Death occurred after disease progression
Nguyen <i>et al</i> [16] 2008	F	43	11 cm × 7.5 cm × 7.5 cm	Classic	SR	6 mo	Recurrence in the liver 6 mo after SR, together with metastases in the peritoneum, omentum, stomach and spleen. Death after disease progression
Xu <i>et al</i> [17] 2009	F	33	2 nodules: 1 cm and 6 cm	Epithelioid	SR	1 yr	Recurrence in the left hepatic lobe
Zeng <i>et al</i> [18] 2010	NS	NS	6 cm	NS	SR	9 yr	Recurrence in the right hepatic lobe with a lesion measuring 6 cm
Butte <i>et al</i> [19] 2011	F;M	54; 41	NS; 9 cm	NS; Epithelioid	SR; SR	53 mo; 41 mo	Recurrence in the liver 53 mo after SR; Occurrence of pulmonary and retroperitoneal metastases 41 mo after SR
Hu <i>et al</i> [20] 2011	F	NS	NS	NS	SR	14 mo	Appearance of local and distant metastases 6 mo after SR. Death occurred 14 mo after SR
Ding <i>et al</i> [8] 2011	F	31	8 cm × 8 cm	NS	SR	7 yr	Recurrence in the right hepatic lobe 6 yr after SR and death occurred one year later
Wang <i>et al</i> [21] 2015	F	37	7 cm × 9 cm	Classic	SR	3 yr	Recurrence of two hepatic nodules in the right lobe (13 cm × 12 cm and 2.3 cm × 1.8 cm) 3 yr after SR. Arterial chemoembolization was performed, followed by liver transplantation
Fukuda <i>et al</i> [22] 2016	M	58	6.3 cm	Epithelioid	SR	9 yr	Metastases occurred in the right lung 7 yr after SR and were treated by pneumonectomy. No recurrence was observed after 2 yr of follow-up
Marcuzzi <i>et al</i> [23] 2018	F	47	3.8 cm × 4.6 cm × 4.7 cm+ 2 hepatic lesions measuring 6 mm and 5 mm	Epithelioid	SR	8 yr and 8 mo	CT scan was performed 6 yr and 4 mo after the initial presentation: the hepatic lesion had grown in size to an estimated 10.9 cm × 9.7 cm × 11.2 cm and the adjacent lesions had grown to 1.9 cm and 2.4 cm with a new lesion on the kidney of 4.6 cm × 5.1 cm. 16 mo later, MRI showed an increase in size of the hepatic lesion (12 cm × 11 cm), and kidney lesion (6.2 cm × 5.6 cm). SR performed 2 mo later. 6 mo after SR, recurrence in the resection line and in the hepatic segment II
Yan <i>et al</i> [24] 2018	NS	NS	15 cm	Epithelioid	SR	9 yr	Recurrence in the liver 9 yr after SR with invasion of the inferior vena cava and diaphragm, and appearance of pulmonary metastases

F: Female; M: Male; NS: Not specified; SR: Surgical resection; CT: Computed tomography; MRI: Magnetic resonance imaging.

The optimal radiological follow-up is not well defined, but the first radiological evaluation may take place at one year, since HAMLs were described to increase by only 0.77 cm per year in a series of 29 patients followed radiologically[3], and radiological progression affected only 6 of the 29 patients (20%). Later, radiological monitoring could be performed twice a year[3], but the frequency will depend on the

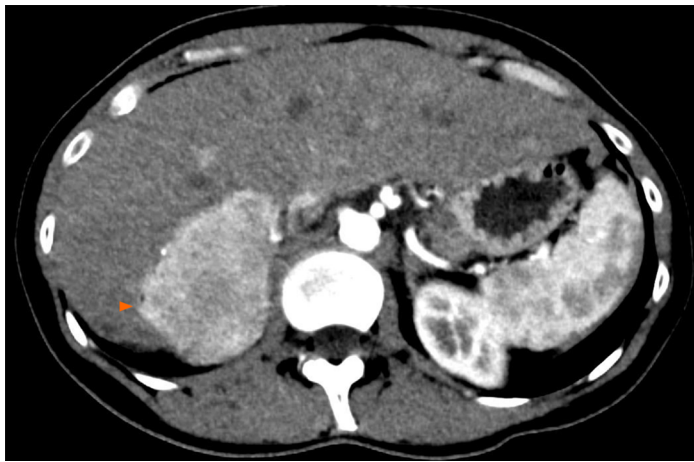


Figure 2 Angiomyolipoma in a healthy 33-year-old woman. Abdominal computed tomography on arterial phase showed a hypervascular solid tumor localized in the right posterior segment (arrowheads).

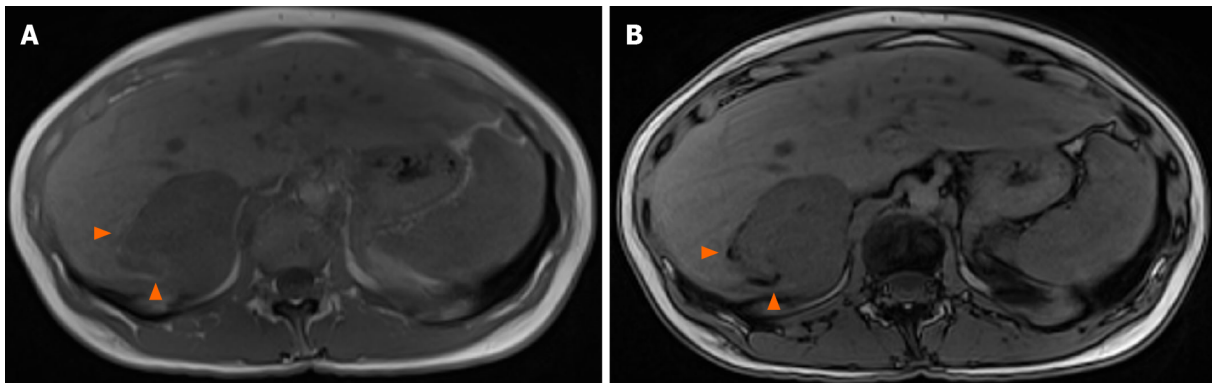


Figure 3 T1 weighted magnetic resonance images. Signal dropout at the periphery of the lesion due to fat contingents (arrowhead). A: In-phase; B: Opposed-phase.

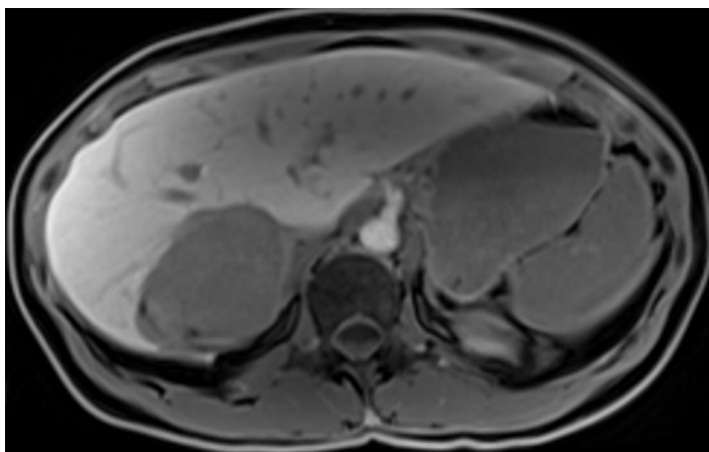


Figure 4 T1 weighted images one hour after hepatocyte-specific agent injection (gadobenate dimeglumine). Hyposignal of the lesion indicates that this is not a hepatocytic tumor.

magnitude of tumor progression during the first years of monitoring. Evidently, persistent tumor progression on successive imaging will require a surgical approach. Surgical resection is therefore recommended when there is uncertainty regarding the histological nature of the lesion after liver biopsy, tumor progression on imaging, tumor-related symptoms, and when the tumor exceeds 5 cm[34,38]. The recurrence rate after surgical resection was 2.4% (6 of 246 patients in the series reported by

Klompenerhouwer *et al*[3]). The local or distant post-resection recurrence rate is 10% in the case of epithelioid-type HAML[52].

Liver transplantation (LT) has sometimes been erroneously performed for a suspected diagnosis of cholangiocarcinoma or hemangiosarcoma mimicking a hepatocellular carcinoma[3,34]. These flawed diagnoses further underline the interest of systematic liver biopsy as well as radiological and anatomopathological expertise. Since the first reported case of LT for HAML in 2010[57], other exceptional cases have been added[21,58]. LT was performed as a last resort treatment for unresectable HAML due to excessive size or a significant number of hepatic tumors.

Other therapeutic alternatives have been reported, such as radiofrequency ablation, arterial embolization or the use of sirolimus[35,42]. mTOR inhibitors, which include sirolimus and everolimus, are immunosuppressive molecules used in transplantation, and which also have antiproliferative properties. In a multicenter, double-blind, placebo-controlled, phase 3 trial (EXIST-2), 118 patients with at least one renal AML larger than 3 cm associated with a definite TSC diagnosis or sporadic LAM were randomized to receive oral everolimus 10 mg/d ($n = 79$, mean dosage: 8.6 mg/d, median duration: 38 wk) or placebo ($n = 39$). The trial showed a beneficial effect of everolimus in reducing the size of AML (response rate: 42% *vs* 0% in the placebo group; $P < 0.0001$). Response was evaluated as a composite endpoint including a reduction $\geq 50\%$ of the AML volume[59].

The favorable outcomes reported in the EXIST-2 trial led to an open label extension undertaken by the same authors. This study demonstrated a pronounced benefit of everolimus for the patients who continued on this drug. The response rate improved from 42% in the primary analysis (median exposure 8.7 mo)[59] to 54% (median exposure 28.9 mo), and the long-term use of everolimus appeared safe[60].

The pooled analysis of two randomized trials[59,61] comparing 109 and 53 patients with renal AML treated respectively with everolimus and placebo for 6 mo confirmed the efficacy of everolimus in reducing tumor volume by 50% or more (risk ratio = 24.69; $P = 0.001$)[62]. Everolimus is currently indicated for the treatment of adult patients with renal AML and TSC not requiring immediate surgery. Some patients with HAML associated with TSC have been treated with sirolimus, which also proved efficacious in reducing tumor volume[54]. The role of mTOR inhibitors for patients with HAML remains undefined, but these molecules could be used, as for the kidney, in a palliative context. The long-term safety profile is consistent with that previously reported and no new safety issues have raised concern[60].

In a retrospective Chinese series (2009-2016) of 92 patients diagnosed with histologically proven HAML measuring between 2 cm and 5 cm, ultrasonography-guided radiofrequency ablation after liver biopsy was used in 22/92 patients. No tumor recurrence was reported, but the duration of follow-up was not indicated[35]. Radiofrequency ablation can therefore advantageously compete with surgery when HAML is relatively small (< 5 cm), and when the location in the liver or the patient's comorbidities are not amenable to safe hepatic surgery.

Arterial embolization[33] is sometimes necessary in the presence of hemorrhagic HAML. There are only eight reported cases of HAML presenting as spontaneous rupture and hemorrhage; the median size of these tumors was 8.5 cm (range: 2.5 cm to 12.5 cm) and three of them were treated with arterial embolization followed by liver resection enabling formal diagnosis of HAML. The main differential diagnosis of hemorrhagic liver tumor in a non-cirrhotic liver is adenoma, which is outside the scope of this review. Therapeutic arterial embolization was used in three other patients with histologically proven HAML (size: 11, 12 and 17 cm) in a retrospective American series[19], and no progression was observed after an average follow-up of 12.7 mo (range, 1-36 mo). The risk of spontaneous hemorrhage seems to be lower for HAML than for kidney AML, which are usually supplied by a single vessel and associated with aneurysms[19]. We propose a decisional algorithm for the management of HAML (Figure 5).

CONCLUSION

HAML is a rare but not exceptional tumor, and usually has a benign course. However, this tumor may display more aggressive behavior with recurrence or metastasis, although there are no robust histological or radiological characteristics to predict the natural course of this type of tumor. Radiological diagnosis is often hazardous due to the variable proportions of the tissues that comprise HAML. Therefore, histological analysis of the tumor and multidisciplinary consultation, whenever possible in an

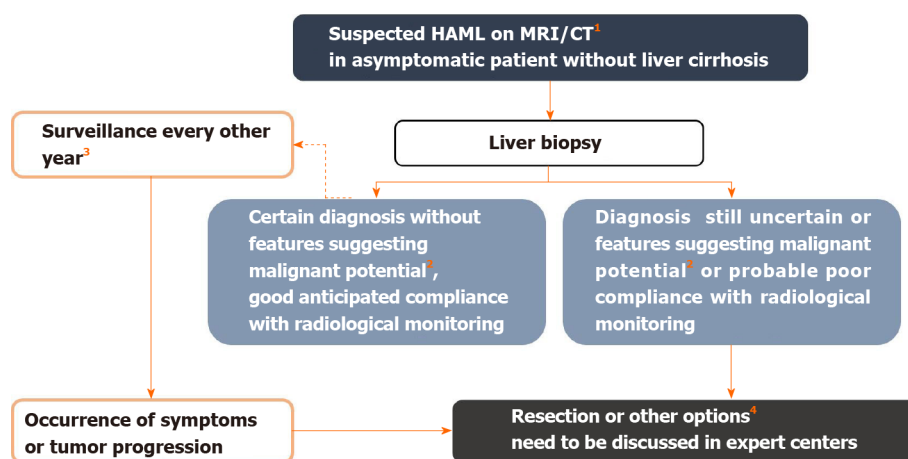


Figure 5 Management algorithm for suspected hepatic angiomyolipoma on imaging. ¹Hepatic angiomyolipoma diagnosis is suggested in the presence of fatty tissue within the solid lesion or presence of wash-out. In the presence of tumor-related symptoms, surgical resection is considered first. ²Features suggesting malignant potential are reported in Table 2. Some authors also recommend surgery in the case of epithelioid-type hepatic angiomyolipoma, which would be at greater risk of progression. Likewise, an association with tuberous sclerosis complex is a condition that increases the risk of malignant transformation, by analogy with renal angiomyolipoma[3]. ³Monitoring maintained despite the benign nature of the initial diagnosis because the aggressive behavior of the tumor is difficult to predict. ⁴Other possible therapeutic options include mTOR inhibitors, radiofrequency ablation, arterial embolization in cases of hemorrhagic rupture, and liver transplantation. Citation: Klompenhouwer AJ, Verver D, Janki S, Bramer WM, Doukas M, Dwarkasing RS, de Man RA, IJzermans JNM. Management of hepatic angiomyolipoma: A systematic review. *Liver Int* 2017; 37(9): 1272-1280. Copyright ©The Author(s) 2017. Published by John Wiley and Sons[3]. MRI: Magnetic resonance imaging; CT: Computed tomography.

expert center, are essential for optimal care of these patients.

REFERENCES

- 1 **World Health Organization Classification of Tumours Editorial Board.** Digestive System Tumours. 5th ed. World Health Organization: International Agency for Research on Cancer Publications, 2019
- 2 **Ishak K.** Mesenchymal tumors of the liver. In: Okuda K, Peter R. Hepatocellular carcinoma. New York: John Wiley & Sons, 1976: 247-275
- 3 **Klompenhouwer AJ,** Verver D, Janki S, Bramer WM, Doukas M, Dwarkasing RS, de Man RA, IJzermans JNM. Management of hepatic angiomyolipoma: A systematic review. *Liver Int* 2017; **37**: 1272-1280 [PMID: 28177188 DOI: 10.1111/liv.13381]
- 4 **Huang Z,** Zhou P, Li S, Li K. Hepatic Angiomyolipoma: Clinical Features and Imaging Findings of Quantitative Contrast-Enhanced Ultrasound Perfusion Analysis and Magnetic Resonance Imaging. *J Ultrasound Med* 2020; **39**: 2111-2122 [PMID: 32383807 DOI: 10.1002/jum.15316]
- 5 **Jung DH,** Hwang S, Hong SM, Kim KH, Ahn CS, Moon DB, Alshahrani AA, Lee SG. Clinicopathological correlation of hepatic angiomyolipoma: a series of 23 resection cases. *ANZ J Surg* 2018; **88**: E60-E65 [PMID: 28122404 DOI: 10.1111/ans.13880]
- 6 **Seow J,** McGill M, Wang W, Smith P, Goodwin M. Imaging hepatic angiomyolipomas: key features and avoiding errors. *Clin Radiol* 2020; **75**: 88-99 [PMID: 31677881 DOI: 10.1016/j.crad.2019.09.135]
- 7 **Liu W,** Wang J, Huang Q, Lu Q, Liang W. Comparison of MRI Features of Epithelioid Hepatic Angiomyolipoma and Hepatocellular Carcinoma: Imaging Data From Two Centers. *Front Oncol* 2018; **8**: 600 [PMID: 30619742 DOI: 10.3389/fonc.2018.00600]
- 8 **Ding GH,** Liu Y, Wu MC, Yang GS, Yang JM, Cong WM. Diagnosis and treatment of hepatic angiomyolipoma. *J Surg Oncol* 2011; **103**: 807-812 [PMID: 21283992 DOI: 10.1002/jso.21814]
- 9 **Croquet V,** Pilette C, Aubé C, Bouju B, Oberti F, Cervi C, Arnaud JP, Rousselet MC, Boyer J, Calès P. Late recurrence of a hepatic angiomyolipoma. *Eur J Gastroenterol Hepatol* 2000; **12**: 579-582 [PMID: 10833105 DOI: 10.1097/00042737-200012050-00018]
- 10 **Dalle I,** Sciort R, de Vos R, Aerts R, van Damme B, Desmet V, Roskams T. Malignant angiomyolipoma of the liver: a hitherto unreported variant. *Histopathology* 2000; **36**: 443-450 [PMID: 10792486 DOI: 10.1046/j.1365-2559.2000.00891.x]
- 11 **Flemming P,** Lehmann U, Becker T, Klemptner J, Kreipe H. Common and epithelioid variants of hepatic angiomyolipoma exhibit clonal growth and share a distinctive immunophenotype. *Hepatology* 2000; **32**: 213-217 [PMID: 10915726 DOI: 10.1053/jhep.2000.9142]
- 12 **McKinney CA,** Geiger JD, Castle VP, Ruiz RE, Strouse PJ. Aggressive hepatic angiomyolipoma in a child. *Pediatr Hematol Oncol* 2005; **22**: 17-24 [PMID: 15770828 DOI: 10.1080/08880010590896206]

- 13 **Parfitt JR**, Bella AJ, Izawa JI, Wehrli BM. Malignant neoplasm of perivascular epithelioid cells of the liver. *Arch Pathol Lab Med* 2006; **130**: 1219-1222 [PMID: [16879028](#)]
- 14 **Yang CY**, Ho MC, Jeng YM, Hu RH, Wu YM, Lee PH. Management of hepatic angiomyolipoma. *J Gastrointest Surg* 2007; **11**: 452-457 [PMID: [17436129](#) DOI: [10.1007/s11605-006-0037-3](#)]
- 15 **Deng YF**, Lin Q, Zhang SH, Ling YM, He JK, Chen XF. Malignant angiomyolipoma in the liver: a case report with pathological and molecular analysis. *Pathol Res Pract* 2008; **204**: 911-918 [PMID: [18723294](#) DOI: [10.1016/j.prp.2008.06.007](#)]
- 16 **Nguyen TT**, Gorman B, Shields D, Goodman Z. Malignant hepatic angiomyolipoma: report of a case and review of literature. *Am J Surg Pathol* 2008; **32**: 793-798 [PMID: [18391749](#) DOI: [10.1097/PAS.0b013e3181607349](#)]
- 17 **Xu PJ**, Shan Y, Yan FH, Ji Y, Ding Y, Zhou ML. Epithelioid angiomyolipoma of the liver: cross-sectional imaging findings of 10 immunohistochemically-verified cases. *World J Gastroenterol* 2009; **15**: 4576-4581 [PMID: [19777618](#) DOI: [10.3748/wjg.15.4576](#)]
- 18 **Zeng JP**, Dong JH, Zhang WZ, Wang J, Pang XP. Hepatic angiomyolipoma: a clinical experience in diagnosis and treatment. *Dig Dis Sci* 2010; **55**: 3235-3240 [PMID: [20165978](#) DOI: [10.1007/s10620-010-1144-2](#)]
- 19 **Butte JM**, Do RK, Shia J, Gönen M, D'Angelica MI, Getrajdman GI, Allen PJ, Fong Y, Dematteo RP, Klimstra DS, Jarnagin WR. Liver angiomyolipomas: a clinical, radiologic, and pathologic analysis of 22 patients from a single center. *Surgery* 2011; **150**: 557-567 [PMID: [21621235](#) DOI: [10.1016/j.surg.2011.03.006](#)]
- 20 **Hu WG**, Lai EC, Liu H, Li AJ, Zhou WP, Fu SY, Pan ZY, Huang G, Lei Y, Lau WY, Wu MC. Diagnostic difficulties and treatment strategy of hepatic angiomyolipoma. *Asian J Surg* 2011; **34**: 158-162 [PMID: [22464831](#) DOI: [10.1016/j.asjsur.2011.11.005](#)]
- 21 **Wang WT**, Li ZQ, Zhang GH, Guo Y, Teng MJ. Liver transplantation for recurrent posthepatectomy malignant hepatic angiomyolipoma: a case report. *World J Gastroenterol* 2015; **21**: 3755-3758 [PMID: [25834347](#) DOI: [10.3748/wjg.v21.i12.3755](#)]
- 22 **Fukuda Y**, Omiya H, Takami K, Mori K, Kodama Y, Mano M, Nomura Y, Akiba J, Yano H, Nakashima O, Ogawara M, Mita E, Nakamori S, Sekimoto M. Malignant hepatic epithelioid angiomyolipoma with recurrence in the lung 7 years after hepatectomy: a case report and literature review. *Surg Case Rep* 2016; **2**: 31 [PMID: [27037804](#) DOI: [10.1186/s40792-016-0158-1](#)]
- 23 **Marcuzzi A**, Haider EA, Salmi ISA. Hepatic epithelioid angiomyolipoma with renal metastasis: radiologic-pathologic correlation. *Radiol Case Rep* 2018; **13**: 829-833 [PMID: [29955240](#) DOI: [10.1016/j.radcr.2018.05.007](#)]
- 24 **Yan Z**, Grenert JP, Joseph NM, Ren C, Chen X, Shafizadeh N, Kakar S. Hepatic angiomyolipoma: mutation analysis and immunohistochemical pitfalls in diagnosis. *Histopathology* 2018; **73**: 101-108 [PMID: [29512829](#) DOI: [10.1111/his.13509](#)]
- 25 **Huber C**, Treutner KH, Steinau G, Schumpelick V. Ruptured hepatic angioliipoma in tuberous sclerosis complex. *Langenbecks Arch Chir* 1996; **381**: 7-9 [PMID: [8717168](#) DOI: [10.1007/BF00184248](#)]
- 26 **Guidi G**, Catalano O, Rotondo A. Spontaneous rupture of a hepatic angiomyolipoma: CT findings and literature review. *Eur Radiol* 1997; **7**: 335-337 [PMID: [9087353](#) DOI: [10.1007/s003300050162](#)]
- 27 **Tsui WM**, Colombari R, Portmann BC, Bonetti F, Thung SN, Ferrell LD, Nakanuma Y, Snover DC, Bioulac-Sage P, Dhillon AP. Hepatic angiomyolipoma: a clinicopathologic study of 30 cases and delineation of unusual morphologic variants. *Am J Surg Pathol* 1999; **23**: 34-48 [PMID: [9888702](#) DOI: [10.1097/00000478-199901000-00004](#)]
- 28 **Zhou YM**, Li B, Xu F, Wang B, Li DQ, Zhang XF, Liu P, Yang JM. Clinical features of hepatic angiomyolipoma. *Hepatobiliary Pancreat Dis Int* 2008; **7**: 284-287 [PMID: [18522883](#)]
- 29 **Occhionorelli S**, Dellachiesa L, Stano R, Cappellari L, Tartarini D, Severi S, Palini GM, Pansini GC, Vasquez G. Spontaneous rupture of a hepatic epithelioid angiomyolipoma: damage control surgery. A case report. *G Chir* 2013; **34**: 320-322 [PMID: [24342160](#)]
- 30 **Aoki H**, Arata T, Morihiro T, Kanaya N, Takeda S, Sui K, Shigeyasu K, Katsuda K, Tanakaya K, Takeuchi H. Spontaneous rupture of a hepatic angiomyolipoma: Report of a case. *Clin J Gastroenterol* 2014; **7**: 429-433 [PMID: [26184024](#) DOI: [10.1007/s12328-014-0517-z](#)]
- 31 **Tajima S**, Suzuki A, Suzumura K. Ruptured hepatic epithelioid angiomyolipoma: a case report and literature review. *Case Rep Oncol* 2014; **7**: 369-375 [PMID: [24987358](#) DOI: [10.1159/000363690](#)]
- 32 **Kai K**, Miyosh A, Aishima S, Wakiyama K, Nakashita S, Iwane S, Azama S, Irie H, Noshiro H. Granulomatous reaction in hepatic inflammatory angiomyolipoma after chemoembolization and spontaneous rupture. *World J Gastroenterol* 2015; **21**: 9675-9682 [PMID: [26327777](#) DOI: [10.3748/wjg.v21.i32.9675](#)]
- 33 **Kim SH**, Kang TW, Lim K, Joh HS, Kang J, Sinn DH. A case of ruptured hepatic angiomyolipoma in a young male. *Clin Mol Hepatol* 2017; **23**: 179-183 [PMID: [28449573](#) DOI: [10.3350/cmh.2016.0027](#)]
- 34 **Klompenerhouwer AJ**, Dwarkasing RS, Doukas M, Pellegrino S, Vilgrain V, Paradis V, Soubrane O, Beane JD, Geller DA, Nalesnik MA, Tripke V, Lang H, Schmelzle M, Pratschke J, Schöning W, Beal E, Sun S, Pawlik TM, de Man RA, Ijzermans JNM. Hepatic angiomyolipoma: an international multicenter analysis on diagnosis, management and outcome. *HPB (Oxford)* 2020; **22**: 622-629 [PMID: [31619346](#) DOI: [10.1016/j.hpb.2019.09.004](#)]
- 35 **Yang X**, Lei C, Qiu Y, Shen S, Lu C, Yan L, Wang W. Selecting a suitable surgical treatment for hepatic angiomyolipoma: a retrospective analysis of 92 cases. *ANZ J Surg* 2018; **88**: E664-E669 [PMID: [29241297](#) DOI: [10.1111/ans.14323](#)]

- 36 **Pontis A**, Piras B, Meloni A, De Lisa A, Melis GB, Angioni S. Rupture of renal angiomyolipoma in pregnancy. *J Obstet Gynaecol* 2013; **33**: 628-629 [PMID: [23919867](#) DOI: [10.3109/01443615.2013.810201](#)]
- 37 **Yamakado K**, Tanaka N, Nakagawa T, Kobayashi S, Yanagawa M, Takeda K. Renal angiomyolipoma: relationships between tumor size, aneurysm formation, and rupture. *Radiology* 2002; **225**: 78-82 [PMID: [12354988](#) DOI: [10.1148/radiol.2251011477](#)]
- 38 **Chang Z**, Zhang JM, Ying JQ, Ge YP. Characteristics and treatment strategy of hepatic angiomyolipoma: a series of 94 patients collected from four institutions. *J Gastrointest Liver Dis* 2011; **20**: 65-69 [PMID: [21451800](#) DOI: [10.1007/s11749-010-0230-2](#)]
- 39 **Eble JN**. Angiomyolipoma of kidney. *Semin Diagn Pathol* 1998; **15**: 21-40 [PMID: [9503504](#)]
- 40 **Kamimura K**, Nomoto M, Aoyagi Y. Hepatic angiomyolipoma: diagnostic findings and management. *Int J Hepatol* 2012; **2012**: 410781 [PMID: [23320180](#) DOI: [10.1155/2012/410781](#)]
- 41 **Osborne JP**, Fryer A, Webb D. Epidemiology of tuberous sclerosis. *Ann N Y Acad Sci* 1991; **615**: 125-127 [PMID: [2039137](#) DOI: [10.1111/j.1749-6632.1991.tb37754.x](#)]
- 42 **Black ME**, Hedgire SS, Camposano S, Paul E, Harisinghani M, Thiele EA. Hepatic manifestations of tuberous sclerosis complex: a genotypic and phenotypic analysis. *Clin Genet* 2012; **82**: 552-557 [PMID: [22251200](#) DOI: [10.1111/j.1399-0004.2012.01845.x](#)]
- 43 **Orlova KA**, Crino PB. The tuberous sclerosis complex. *Ann N Y Acad Sci* 2010; **1184**: 87-105 [PMID: [20146692](#) DOI: [10.1111/j.1749-6632.2009.05117.x](#)]
- 44 **Fricke BL**, Donnelly LF, Casper KA, Bissler JJ. Frequency and imaging appearance of hepatic angiomyolipomas in pediatric and adult patients with tuberous sclerosis. *AJR Am J Roentgenol* 2004; **182**: 1027-1030 [PMID: [15039181](#) DOI: [10.2214/ajr.182.4.1821027](#)]
- 45 **Folpe AL**, Kwiatkowski DJ. Perivascular epithelioid cell neoplasms: pathology and pathogenesis. *Hum Pathol* 2010; **41**: 1-15 [PMID: [19604538](#) DOI: [10.1016/j.humpath.2009.05.011](#)]
- 46 **Folpe AL**, Mentzel T, Lehr HA, Fisher C, Balzer BL, Weiss SW. Perivascular epithelioid cell neoplasms of soft tissue and gynecologic origin: a clinicopathologic study of 26 cases and review of the literature. *Am J Surg Pathol* 2005; **29**: 1558-1575 [PMID: [16327428](#) DOI: [10.1097/01.pas.0000173232.22117.37](#)]
- 47 **Roach ES**, Gomez MR, Northrup H. Tuberous sclerosis complex consensus conference: revised clinical diagnostic criteria. *J Child Neurol* 1998; **13**: 624-628 [PMID: [9881533](#) DOI: [10.1177/088307389801301206](#)]
- 48 **Aydin H**, Magi-Galluzzi C, Lane BR, Sercia L, Lopez JJ, Rini BI, Zhou M. Renal angiomyolipoma: clinicopathologic study of 194 cases with emphasis on the epithelioid histology and tuberous sclerosis association. *Am J Surg Pathol* 2009; **33**: 289-297 [PMID: [18852677](#) DOI: [10.1097/PAS.0b013e31817ed7a6](#)]
- 49 **Mao JX**, Yuan H, Sun KY, Liu C, Fu H, Ding GS, Guo WY, Teng F. Pooled analysis of hepatic inflammatory angiomyolipoma. *Clin Res Hepatol Gastroenterol* 2020; **44**: e145-e151 [PMID: [32482543](#) DOI: [10.1016/j.clinre.2020.04.005](#)]
- 50 **Bonetti F**, Pea M, Martignoni G, Zamboni G. PEC and sugar. *Am J Surg Pathol* 1992; **16**: 307-308 [PMID: [1599021](#) DOI: [10.1097/00000478-199203000-00013](#)]
- 51 **Hornick JL**, Fletcher CD. Sclerosing PEComa: clinicopathologic analysis of a distinctive variant with a predilection for the retroperitoneum. *Am J Surg Pathol* 2008; **32**: 493-501 [PMID: [18223480](#) DOI: [10.1097/PAS.0b013e318161dc34](#)]
- 52 **Liu J**, Zhang CW, Hong DF, Tao R, Chen Y, Shang MJ, Zhang YH. Primary hepatic epithelioid angiomyolipoma: A malignant potential tumor which should be recognized. *World J Gastroenterol* 2016; **22**: 4908-4917 [PMID: [27239117](#) DOI: [10.3748/wjg.v22.i20.4908](#)]
- 53 **Yeh CN**, Lee KF, Chen MF. Immunohistochemical study of hepatic angiomyolipoma. *Hepatogastroenterology* 2005; **52**: 1151-1153 [PMID: [16001650](#)]
- 54 **L'Hostis H**, Deminiere C, Ferriere JM, Coindre JM. Renal angiomyolipoma: a clinicopathologic, immunohistochemical, and follow-up study of 46 cases. *Am J Surg Pathol* 1999; **23**: 1011-1020 [PMID: [10478660](#) DOI: [10.1097/00000478-199909000-00003](#)]
- 55 **Ohmori T**, Arita N, Uruga N, Tabei R, Yamamoto M, Kataoka M, Hamamoto K. Giant hepatic angiomyolipoma. *Histopathology* 1989; **15**: 540-543 [PMID: [2599515](#) DOI: [10.1111/j.1365-2559.1989.tb01615.x](#)]
- 56 **Kumasaka S**, Arisaka Y, Tokue A, Higuchi T, Nakajima T, Tsushima Y. A case of multiple hepatic angiomyolipomas with high (18) F-fluorodeoxyglucose uptake. *BMC Med Imaging* 2014; **14**: 17 [PMID: [24885757](#) DOI: [10.1186/1471-2342-14-17](#)]
- 57 **Dumortier J**, Guillaud O, Walter T, Ber CE, Partensky C, Boillot O, Scoazec JY. Liver transplantation for multiple angiomyolipomas complicating tuberous sclerosis complex. *Gastroenterol Clin Biol* 2010; **34**: 494-498 [PMID: [20674202](#) DOI: [10.1016/j.gcb.2010.06.005](#)]
- 58 **Vagefi PA**, Eilers H, Hiniker A, Freise CE. Liver transplantation for giant hepatic angiomyolipoma. *Liver Transpl* 2011; **17**: 985-986 [PMID: [21462294](#) DOI: [10.1002/lt.22310](#)]
- 59 **Bissler JJ**, Kingswood JC, Radzikowska E, Zonnenberg BA, Frost M, Belousova E, Sauter M, Nonomura N, Brakemeier S, de Vries PJ, Whittemore VH, Chen D, Sahmoud T, Shah G, Lincy J, Lebwohl D, Budde K. Everolimus for angiomyolipoma associated with tuberous sclerosis complex or sporadic lymphangioleiomyomatosis (EXIST-2): a multicentre, randomised, double-blind, placebo-controlled trial. *Lancet* 2013; **381**: 817-824 [PMID: [23312829](#) DOI: [10.1016/S0140-6736\(12\)61767-X](#)]
- 60 **Bissler JJ**, Kingswood JC, Radzikowska E, Zonnenberg BA, Frost M, Belousova E, Sauter M,

- Nonomura N, Brakemeier S, de Vries PJ, Berkowitz N, Miao S, Segal S, Peyrard S, Budde K. Everolimus for renal angiomyolipoma in patients with tuberous sclerosis complex or sporadic lymphangioleiomyomatosis: extension of a randomized controlled trial. *Nephrol Dial Transplant* 2016; **31**: 111-119 [PMID: [26156073](#) DOI: [10.1093/ndt/gfv249](#)]
- 61 **Franz DN.** Everolimus in the treatment of subependymal giant cell astrocytomas, angiomyolipomas, and pulmonary and skin lesions associated with tuberous sclerosis complex. *Biologics* 2013; **7**: 211-221 [PMID: [24143074](#) DOI: [10.2147/BTT.S25095](#)]
- 62 **Li M,** Zhou Y, Chen C, Yang T, Zhou S, Chen S, Wu Y, Cui Y. Efficacy and safety of mTOR inhibitors (rapamycin and its analogues) for tuberous sclerosis complex: a meta-analysis. *Orphanet J Rare Dis* 2019; **14**: 39 [PMID: [30760308](#) DOI: [10.1186/s13023-019-1012-x](#)]



Published by **Baishideng Publishing Group Inc**
7041 Koll Center Parkway, Suite 160, Pleasanton, CA 94566, USA

Telephone: +1-925-3991568

E-mail: bpgoffice@wjgnet.com

Help Desk: <https://www.f6publishing.com/helpdesk>

<https://www.wjgnet.com>

