

# World Journal of *Clinical Oncology*

*World J Clin Oncol* 2021 February 24; 12(2): 43-114



## Contents

Monthly Volume 12 Number 2 February 24, 2021

## EDITORIAL

- 43 Metastatic hormone-sensitive prostate cancer: How should it be treated?  
*López-Campos F, González-San Segundo C, Conde-Moreno AJ, Couñago F*
- 50 New Year's greeting and overview of World Journal of Clinical Oncology in 2021  
*Gong ZM, Patel HR*

## OPINION REVIEW

- 54 Pancreatic cancer in the era of COVID-19 pandemic: Which one is the lesser of two evils?  
*Moslim MA, Hall MJ, Meyer JE, Reddy SS*

## EVIDENCE REVIEW

- 61 New frontiers in focal therapy for prostate cancer: Prostate-specific membrane antigen positron emission tomography/magnetic resonance imaging  
*Manfredi C, Fernández-Pascual E, Linares-Espinós E, Couñago F, Martínez-Salamanca JI*

## REVIEW

- 69 Chronic myeloid leukemia-from the Philadelphia chromosome to specific target drugs: A literature review  
*Sampaio MM, Santos MLC, Marques HS, Gonçalves VLS, Araújo GRL, Lopes LW, Apolonio JS, Silva CS, Santos LKS, Cuzzuol BR, Guimarães QES, Santos MN, de Brito BB, da Silva FAF, Oliveira MV, Souza CL, de Melo FF*

## ORIGINAL ARTICLE

## Basic Study

- 95 Autosegmentation of cardiac substructures in respiratory-gated, non-contrasted computed tomography images  
*Farrugia M, Yu H, Singh AK, Malhotra H*

## Retrospective Study

- 103 Racial disparities in immune-related adverse events of immune checkpoint inhibitors and association with survival based on clinical and biochemical responses  
*Peravali M, Gomes-Lima C, Tefera E, Baker M, Sherchan M, Farid S, Burman K, Constantinescu F, Veytsman I*

**ABOUT COVER**

Ashok K Vikey, PhD, MDS, Associate Professor, Department of Oral and Maxillofacial Pathology & Microbiology, Government College of Dentistry, 1 Sardar Patel Road, Opposite M.Y. Hospital, Indore 452001, Madhya Pradesh, India. drvikey@yahoo.in

**AIMS AND SCOPE**

The primary aim of *World Journal of Clinical Oncology* (WJCO, *World J Clin Oncol*) is to provide scholars and readers from various fields of oncology with a platform to publish high-quality basic and clinical research articles and communicate their research findings online.

WJCO mainly publishes articles reporting research results and findings obtained in the field of oncology and covering a wide range of topics including art of oncology, biology of neoplasia, breast cancer, cancer prevention and control, cancer-related complications, diagnosis in oncology, gastrointestinal cancer, genetic testing for cancer, gynecologic cancer, head and neck cancer, hematologic malignancy, lung cancer, melanoma, molecular oncology, neurooncology, palliative and supportive care, pediatric oncology, surgical oncology, translational oncology, and urologic oncology.

**INDEXING/ABSTRACTING**

The WJCO is now abstracted and indexed in PubMed, PubMed Central, Emerging Sources Citation Index (Web of Science), China National Knowledge Infrastructure (CNKI), China Science and Technology Journal Database (CSTJ), and Superstar Journals Database.

**RESPONSIBLE EDITORS FOR THIS ISSUE**

Production Editor: Li-Li Wang; Production Department Director: Yun-Xiaoqian Wu; Editorial Office Director: Ze-Mao Gong.

**NAME OF JOURNAL**

*World Journal of Clinical Oncology*

**ISSN**

ISSN 2218-4333 (online)

**LAUNCH DATE**

November 10, 2010

**FREQUENCY**

Monthly

**EDITORS-IN-CHIEF**

Hiten RH Patel

**EDITORIAL BOARD MEMBERS**

<https://www.wjgnet.com/2218-4333/editorialboard.htm>

**PUBLICATION DATE**

February 24, 2021

**COPYRIGHT**

© 2021 Baishideng Publishing Group Inc

**INSTRUCTIONS TO AUTHORS**

<https://www.wjgnet.com/bpg/gerinfo/204>

**GUIDELINES FOR ETHICS DOCUMENTS**

<https://www.wjgnet.com/bpg/GerInfo/287>

**GUIDELINES FOR NON-NATIVE SPEAKERS OF ENGLISH**

<https://www.wjgnet.com/bpg/gerinfo/240>

**PUBLICATION ETHICS**

<https://www.wjgnet.com/bpg/GerInfo/288>

**PUBLICATION MISCONDUCT**

<https://www.wjgnet.com/bpg/gerinfo/208>

**ARTICLE PROCESSING CHARGE**

<https://www.wjgnet.com/bpg/gerinfo/242>

**STEPS FOR SUBMITTING MANUSCRIPTS**

<https://www.wjgnet.com/bpg/GerInfo/239>

**ONLINE SUBMISSION**

<https://www.f6publishing.com>

## Retrospective Study

# Racial disparities in immune-related adverse events of immune checkpoint inhibitors and association with survival based on clinical and biochemical responses

Monica Peravali, Cristiane Gomes-Lima, Eshetu Tefera, Mairead Baker, Mamta Sherchan, Saira Farid, Kenneth Burman, Florina Constantinescu, Irina Veytsman

**ORCID number:** Monica Peravali 0000-0002-6511-2826; Cristiane Gomes-Lima 0000-0001-7684-8268; Eshetu Tefera 0000-0001-5041-8438; Mairead Baker 0000-0001-54164615; Mamta Sherchan 0000-0003-2574-2046; Saira Farid 0000-0001-6499-5543; Kenneth Burman 0000-0001-8597-7213; Florina Constantinescu 0000-0003-3978-6226; Irina Veytsman 0000-0002-9975-3445.

**Author contributions:** Peravali M, Gomes-Lima C, Burman K, Constantinescu F, and Veytsman I designed the research study; Peravali M, Gomes-Lima C, Baker M, Sherchan M, Farid S, and Veytsman I collected data for research; Tefera E provided biostatistics and analysis of data; Peravali M, Gomes-Lima C, Burman K, Tefera E, and Veytsman I wrote and revised the manuscript; all authors have read and approved the final manuscript.

### Institutional review board

**statement:** This study was reviewed and approved by the MedStar Health Research Institute Ethics Committee. Approved IRB code STUDY00001266.

### Informed consent statement:

Patients were not required to give

**Monica Peravali, Irina Veytsman,** Department of Hematology/Oncology, MedStar Washington Hospital Center, Washington, DC 20010, United States

**Cristiane Gomes-Lima, Kenneth Burman,** Department of Endocrinology, MedStar Washington Hospital Center, Washington, DC 20010, United States

**Eshetu Tefera,** Department of Biostatistics and Bioinformatics, MedStar Health Research Institute, Washington, DC 20010, United States

**Mairead Baker, Saira Farid,** Department of Internal Medicine, MedStar Washington Hospital Center, Washington, DC 20010, United States

**Mamta Sherchan, Florina Constantinescu,** Department of Rheumatology, MedStar Washington Hospital Center, Washington, DC 20010, United States

**Corresponding author:** Monica Peravali, MD, Academic Fellow, Department of Hematology/Oncology, MedStar Washington Hospital Center, 110 Irving Street, Washington, DC 20010, United States. [monica.peravali@medstar.net](mailto:monica.peravali@medstar.net)

## Abstract

### BACKGROUND

Immune checkpoint inhibitors (ICPi) cause various immune-related adverse events (irAE) with thyroid dysfunction as a commonly reported abnormality. There is increasing evidence showing positive association with development of irAE and survival. However, prior trials with ICPi had underrepresentation of minorities with < 5% African Americans.

### AIM

To evaluate the association between development of irAE and survival outcomes among a racially diverse patient population.

### METHODS

Data on patients with stage IV solid malignancies treated with programmed cell death-protein 1/programmed death ligand 1 blockers between January 2013 and December 2018 across MedStar Georgetown Cancer Institute facilities were

informed consent to the study because the analysis used anonymous clinical data.

**Conflict-of-interest statement:** The authors have no conflicts of interest to declare.

**Data sharing statement:** No additional data are available.

**Open-Access:** This article is an open-access article that was selected by an in-house editor and fully peer-reviewed by external reviewers. It is distributed in accordance with the Creative Commons Attribution NonCommercial (CC BY-NC 4.0) license, which permits others to distribute, remix, adapt, build upon this work non-commercially, and license their derivative works on different terms, provided the original work is properly cited and the use is non-commercial. See: <http://creativecommons.org/licenses/by-nc/4.0/>

**Manuscript source:** Unsolicited manuscript

**Specialty type:** Oncology

**Country/Territory of origin:** United States

**Peer-review report's scientific quality classification**

Grade A (Excellent): 0  
Grade B (Very good): 0  
Grade C (Good): C, C  
Grade D (Fair): 0  
Grade E (Poor): 0

**Received:** December 14, 2020

**Peer-review started:** December 14, 2020

**First decision:** December 24, 2020

**Revised:** January 4, 2021

**Accepted:** January 21, 2021

**Article in press:** January 21, 2021

**Published online:** February 24, 2021

**P-Reviewer:** Farahzadi R

**S-Editor:** Zhang L

**L-Editor:** A

**P-Editor:** Wang LL



retrospectively reviewed. Patients treated with cytotoxic T-lymphocyte-associated protein 4 inhibitors were excluded. Progression free survival (PFS) and overall survival (OS) were primary endpoints and were calculated using Kaplan-Meier methods and Wilcoxon rank sum test for comparison.

## RESULTS

Out of 293 patients who met eligibility criteria, 91 pts (31%) had any grade irAE; most common AE were endocrine (40.7%) specifically TSH elevation, dermatological (23.1%) and rheumatologic (18.7%). Proportion of irAE was significantly higher in Caucasians *vs* African Americans (60.4% *vs* 30.8%), in patients with low programmed death ligand 1, lower LDH, older age, and those who had more treatment cycles with ICPI. Rate of progression was lower in patients with irAE (30.8% *vs* 46.0%,  $P = 0.0140$ ). Median PFS (5.8 *vs* 3.0 mo,  $P = 0.0204$ ) and OS (17.1 *vs* 7.2 mo,  $P < 0.0001$ ) were higher with irAE. Statistically significant difference in OS (17.1 *vs* 8.6 mo,  $P = 0.0002$ ) but not in PFS (5.8 *vs* 3.3 mo,  $P = 0.0545$ ) was noted with endocrine irAE. No differences in survival were observed among other commonly reported irAE. Differences in survival among subgroups of patients with irAE are described.

## CONCLUSION

Development of irAE positively correlated with improved PFS and OS as reported in previous studies. To our knowledge, this is the first study observing differences in OS favoring endocrine AE and Caucasian race. These factors may be potential surrogate markers of prognosis pending replication of these results in large-scale studies.

**Key Words:** Immunotherapy; Adverse events; Endocrine; Survival; Race; Minority

©The Author(s) 2021. Published by Baishideng Publishing Group Inc. All rights reserved.

**Core Tip:** Immune checkpoint inhibitors have revolutionized the treatment of many types of cancer, yet they cause various immune-related adverse events (irAEs), notably thyroid dysfunction. Development of irAEs has been reported as a surrogate marker of improved survival. However, minority racial group representation is a limitation in immunotherapy trials. In this retrospective study, we evaluate the association of development of irAEs to survival outcomes in patients treated with immune checkpoint inhibitors for advanced stage solid malignancies. The racial diversity of the population of patients is a unique feature of this study. Our data concluded a positive correlation of irAEs development with increased probability of survival and demonstrates a positive correlation with Caucasian race and overall survival.

**Citation:** Peravali M, Gomes-Lima C, Tefera E, Baker M, Sherchan M, Farid S, Burman K, Constantinescu F, Veytsman I. Racial disparities in immune-related adverse events of immune checkpoint inhibitors and association with survival based on clinical and biochemical responses. *World J Clin Oncol* 2021; 12(2): 103-114

**URL:** <https://www.wjgnet.com/2218-4333/full/v12/i2/103.htm>

**DOI:** <https://dx.doi.org/10.5306/wjco.v12.i2.103>

## INTRODUCTION

Emergence of immune checkpoint inhibitors (ICPI) has revolutionized standard of care treatment in a wide spectrum of cancer subtypes resulting in increased survival<sup>[1,2]</sup>. These agents up regulate activity of the immune system by blocking intrinsic down regulators of immunity such as cytotoxic T-lymphocyte-associated protein 4 and programmed cell death-protein 1 (PD-1)<sup>[1]</sup>. This amplified immune activity can also result in off target autoimmune inflammation of healthy organs resulting in immune-related adverse effects (irAE)<sup>[1,3]</sup>.

Various mechanisms contribute to the irAE affecting several organ systems, with effect on the endocrine glands noted as one of the most common and often irreversible



irAE<sup>[1,4-7]</sup>. Correlation with the development of these adverse effects on outcomes is controversial, however, there is a growing body of evidence that the development of these adverse events may be associated with improved outcomes<sup>[1,8-13]</sup>.

In this retrospective analysis, we aim to describe the association of development of irAEs to survival outcomes in patients treated with ICPI for advanced stage solid malignancies. We also specifically underscore the effects of endocrine irAEs on survival. More importantly, we sought to address differences in survival outcomes across different racial groups given the significant underrepresentation of minority racial groups in pivotal immunotherapy trials<sup>[14]</sup>.

We hypothesize that development of irAEs will have a positive correlation with progression free survival (PFS) and overall survival (OS) in patients treated with ICPI. We also anticipate that there will be differences in outcomes among various racial groups. There is very limited data on efficacy outcomes in racially diverse patients who receive immunotherapy and develop irAEs making our study unique and clinically relevant.

## MATERIALS AND METHODS

This is a retrospective analysis of patients with a diagnosis of stage IV solid malignancy who were treated with PD-1 or programmed death ligand 1 (PDL1) blocker between January 1, 2013 and December 31, 2018 across MedStar Georgetown Cancer Institute facilities. This study was approved by the MedStar institutional review board and a waiver of HIPAA authorization was obtained given its retrospective nature.

### Patients

All patients with stage IV solid malignancy in follow-up from January 1, 2013 to December 31, 2018 across MedStar Georgetown Cancer Institute facilities were identified using ICD-10 diagnostic codes. The electronic medical records were reviewed to identify patients who have been initiated on an ICPI with pembrolizumab, atezolizumab, durvalumab, or nivolumab. Patients with hematological malignancies, early-stage solid malignancies and those treated in combination with cytotoxic T-lymphocyte-associated protein 4 inhibitors, such as ipilimumab, were excluded.

Pertinent data collected from the records included age at the time of ICPI initiation, gender, race which was self-identified by patients, date of metastatic disease diagnosis, type of cancer, sites of metastasis, line of treatment, molecular markers, percentage of PDL1 expression, date of start of ICPI, date of first reported irAE, type of irAE, severity of irAE based on Common Terminology Criteria for Adverse Events Version 5.0<sup>[15]</sup>, systemic steroid use, date of death or date of last follow up.

### Endpoints

Differences in median PFS and OS and probability of survival among patients who had irAE *vs* those without irAE were primary endpoints. Data were further stratified based on age, gender, race, PDL1 expression, line of therapy, median number of cycles and LDH. Secondary endpoints included difference in median PFS and OS and probability of survival among those with endocrine irAE. PFS was defined as the time from initiation of ICPI therapy to radiographic progression. OS was defined as the time from initiation of ICPI therapy to date of death or last follow up.

### Statistics

Descriptive statistics were used to summarize demographics, PDL1 expression, line of therapy, number of cycles of immunotherapy. Continuous variables were described by means with standard deviations and medians and first and third quartiles. Two-sample *t*-test was used to examine differences in the averages between the groups if normality assumption was satisfied and the non-parametric Wilcoxon rank sum test was used when normality assumption was not satisfied. Categorical variables were described by frequencies and column percentages, and Chi-square and Fisher exact tests as appropriate were used to investigate differences between the groups. Kaplan-Meier curves were provided for overall and progression free survival and log rank test was used to compare the curves between the two groups. Statistical significance was defined as  $P < 0.05$ .

## RESULTS

### Patients

464 patients with stage IV solid malignancies were selected for review, and 293 patients met eligibility criteria. 91 patients (31%) had any grade irAE; most common AE were endocrine (40.7%), specifically TSH elevation, dermatological (23.1%) and rheumatologic (18.7%). Patient characteristics and incidence of irAE are described in detail in Tables 1-3. Proportion of irAE was significantly higher in Caucasians *vs* African Americans (AA) at 60.4% and 30.8% respectively ( $P = 0.01$ ). Mean age of patients at initiation of ICPi was 63 years  $\pm$  12.8. The incidence of irAE was significantly higher in older patients, with a mean age of 66 years  $\pm$  13.2 in comparison to a mean age of 62 years  $\pm$  12.4 in those without irAE ( $P = 0.0108$ ). PDL1 positivity, defined as greater than or equal to 1%, was observed in 71 patients while PDL1 negativity was observed in 70 patients; 192 patients had missing PDL1 status. The incidence of irAE did not differ between the two groups ( $P = 0.07$ ). However, when these patients were further stratified to PDL1 status  $< 50\%$  ( $n = 69$ ) or  $\geq 50\%$  ( $n = 32$ ), there was a statistically significant increase in incidence of irAE in the low PDL1 positive group at 17.6% *vs* 15.4% ( $P = 0.03$ ). Statistically significant relationship was found between number of cycles of immunotherapy and irAE. The median number of cycles of immunotherapy in patients who had irAE is higher than patients who had no irAE at 8 and 4 respectively ( $P = 0.001$ ). Median LDH was also lower at 190 in patients with irAE *vs* those who did not at 253 ( $P = 0.04$ ).

### Primary endpoints

Rate of progression was lower in patients with irAE at 30.8% *vs* 46.0%, ( $P = 0.01$ ). Median PFS was higher at 5.8 mo in patients with irAE *vs* those without at 3.0 mo ( $P = 0.02$ ). Median OS was also higher in those with irAE *vs* no irAE at 17.1 and 7.2 mo respectively ( $P < 0.0001$ ). The probability of PFS and OS was statistically significant ( $P = 0.0088$  and  $P = 0.0004$ ), respectively, based on Kaplan-Meier curves (Figure 1). Statistical significance between groups was defined as  $P < 0.05$ .

### Secondary endpoints

Statistically significant difference in median OS (17.1 *vs* 8.6 mo,  $P = 0.0002$ ) but not in PFS (5.8 *vs* 3.3 mo,  $P = 0.0545$ ) was noted with endocrine irAE based on Wilcoxon rank sum test. However, these differences were not seen on Kaplan-Meier analysis (Figure 2). No differences in survival were observed among other commonly reported irAE. Differences in survival among subgroups of patients with irAE and endocrine irAE are detailed in Table 4. Median OS was higher with Caucasian race *vs* AA in patients with irAE (20.6 *vs* 12.9 mo,  $P = 0.0237$ ) and in those who specifically had endocrine irAEs (21.8 *vs* 15.8 mo,  $P = 0.0356$ ). However, once again these did not translate to better survival probability on Kaplan-Meier analysis (Figure 3).

## DISCUSSION

Development of irAE in patients treated with ICPi is not uncommon and is an off-target effect of increased immune activity<sup>[1]</sup>. Several studies done in specific tumor types using various anti-PD-1 and anti-PDL1 agents confirmed the association of irAE development with improved outcomes<sup>[8-12,16]</sup>. Our study similarly concluded a positive correlation of irAE development with increased probability of survival. The inclusion of a racially diverse population of patients in our study is unique and has not been previously reported to the best of our knowledge. Moreover, we also noted important associations with development of endocrine irAE with survival outcomes.

Median PFS and OS were significantly improved in patients who developed irAE in our study. Moreover, positive correlation in median OS was also seen in patients who had endocrine adverse events. A study by Grangeon *et al*<sup>[17]</sup> assessing similar survival endpoints in patients with advanced stage non-small cell lung cancer (NSCLC) concluded improved objective response rates, PFS and OS in patients who received ICPi therapy. Moreover, in patients who had thyroid dysfunction PFS and OS were significantly improved. Other studies reported similar outcomes in patients with NSCLC who had thyroid AE following treatment with immunotherapy<sup>[9,10,18]</sup>. A preliminary study from our group also addressed this issue with a systematic literature review and meta-analysis of patients with lung cancer and head and neck cancer on immune checkpoint inhibitor therapy across twelve randomized-controlled trials comprising of 7060 patients with 3815 patients using ICPi<sup>[19]</sup>. In that study, at a

Table 1 Patient characteristics

	irAE						
	Overall		Yes		No		
	<i>n</i>	%	<i>n</i>	%	<i>n</i>	%	
Gender							0.8120
Female	129	44.0	41	45.1	88	43.6	
Male	164	56.0	50	54.9	114	56.4	
Race							0.0141
White	140	47.8	55	60.4	85	42.1	
Black	122	41.6	28	30.8	94	46.5	
Asian	13	4.4	4	4.4	9	4.5	
Hispanic	2	0.7	0	0	2	1.0	
Native American	1	0.3	1	1.1	0	0	
Other	11	3.8	1	1.1	10	5.0	
Unknown	4	1.4	2	2.2	2	1.0	
Death							0.1488
No	131	44.7	35	38.5	96	47.5	
Yes	162	55.3	56	61.5	106	52.5	
PDL1 positive							0.0695
Yes	71	24.2	25	27.5	46	22.8	
No	70	23.9	15	16.5	55	27.2	
Missing	152	51.9	51	56.0	101	50.0	
PDL1 expression							0.0354
< 50%	69	23.5	16	17.6	53	26.2	
≥ 50%	32	10.9	14	15.4	18	8.9	
Missing	192	65.5	61	67.0	131	64.9	
Line of therapy							0.9432
1	85	29.0	29	31.9	56	27.7	
2	130	44.4	37	40.7	93	46.0	
3	35	11.9	12	13.2	23	11.4	
4	17	5.8	5	5.5	12	5.9	
5	8	2.7	2	2.2	6	3.0	
6	2	0.7	1	1.1	1	0.5	
7	2	0.7	0	0	2	1.0	
8	1	0.3	0	0	1	0.5	
Missing	13	4.4	5	5.5	8	4.0	
Progression							0.0140
Yes	121	41.3	28	30.8	93	46.0	
No	172	58.7	63	69.2	109	54.0	

irAE: Immune-related adverse events; PDL1: Programmed death ligand 1.



mean follow-up of 12.2 mo, the OS (hazard ratio: 0.75; 95% credibility interval: 0.70-0.80) and PFS (hazard ratio: 0.77; 95% credibility interval: 0.72-0.81) in the ICPI arm were significantly improved. Endocrine irAE, specifically hypothyroidism, was the most common adverse event with a prevalence of 9% ( $P = 0.019$ ). However, none of these studies accounted for differences among various racial groups and outcomes in all cancer subtypes is sparse.

Minority patient enrollment, specifically African American patients, in immunotherapy trials across various tumor types was less than 5%<sup>[14]</sup>. This raises an important gap in the understanding of clinical outcomes in these patients with the use of ICPI. A study done in 136 metastatic NSCLC patients who received immunotherapy at our institutions did not show a difference in efficacy or safety among Caucasians and AA races (unpublished results). Out of the 293 patients in our study with various stage IV solid malignancies, 41.6% of patients were AA. The incidence of irAE was significantly higher in Caucasians *vs* AA 60.4% and 30.8% respectively,  $P = 0.0141$ . Moreover, a higher median OS was also seen with Caucasian race *vs* AA in patients with irAE (20.6 *vs* 12.9 mo,  $P = 0.0237$ ) and in those with endocrine irAEs (21.8 *vs* 15.8 mo,  $P = 0.0356$ ). Although this did not translate to a better probability of survival, our study adds important real-world data in this under-represented group of patients.

A major limitation to our study is the significant heterogeneity in baseline patient characteristics including tumor subtype, type of immunotherapy used, and line of treatment. Despite these limitations, our study confirmed our primary endpoint of improved survival outcomes in patients who develop irAE during treatment. In other subgroups of interest such as Caucasian race and patients with endocrine irAE, there was a positive correlation with median OS however this was not translated to increased rate of survival due to discordant results between the two statistical tests. Prospective studies in similar patients with pre-specified multivariate analyses accounting for tumor type, type of ICPI and line of treatment may further elicit important patterns and could lead to definitive conclusions in these subgroups.

---

## CONCLUSION

---

Development of irAEs improves PFS and OS in patients with advanced stage solid malignancies treated with ICPI. Our study also underscored two important factors, race and endocrine irAEs, as possible surrogate markers for improved survival given the noted positive correlation with median overall survival.

**Table 2 Patient characteristics**

	irAE									<i>P</i> value
	Overall			Yes			No			
	<i>n</i>	mean	SD	<i>n</i>	mean	SD	<i>n</i>	mean	SD	
Age at ICPI initiation	293	63.3	12.8	91	66.1	13.2	202	62.0	12.4	0.0108

irAE: Immune-related adverse events; ICPI: Immune checkpoint inhibitors.

**Table 3 Patient characteristics**

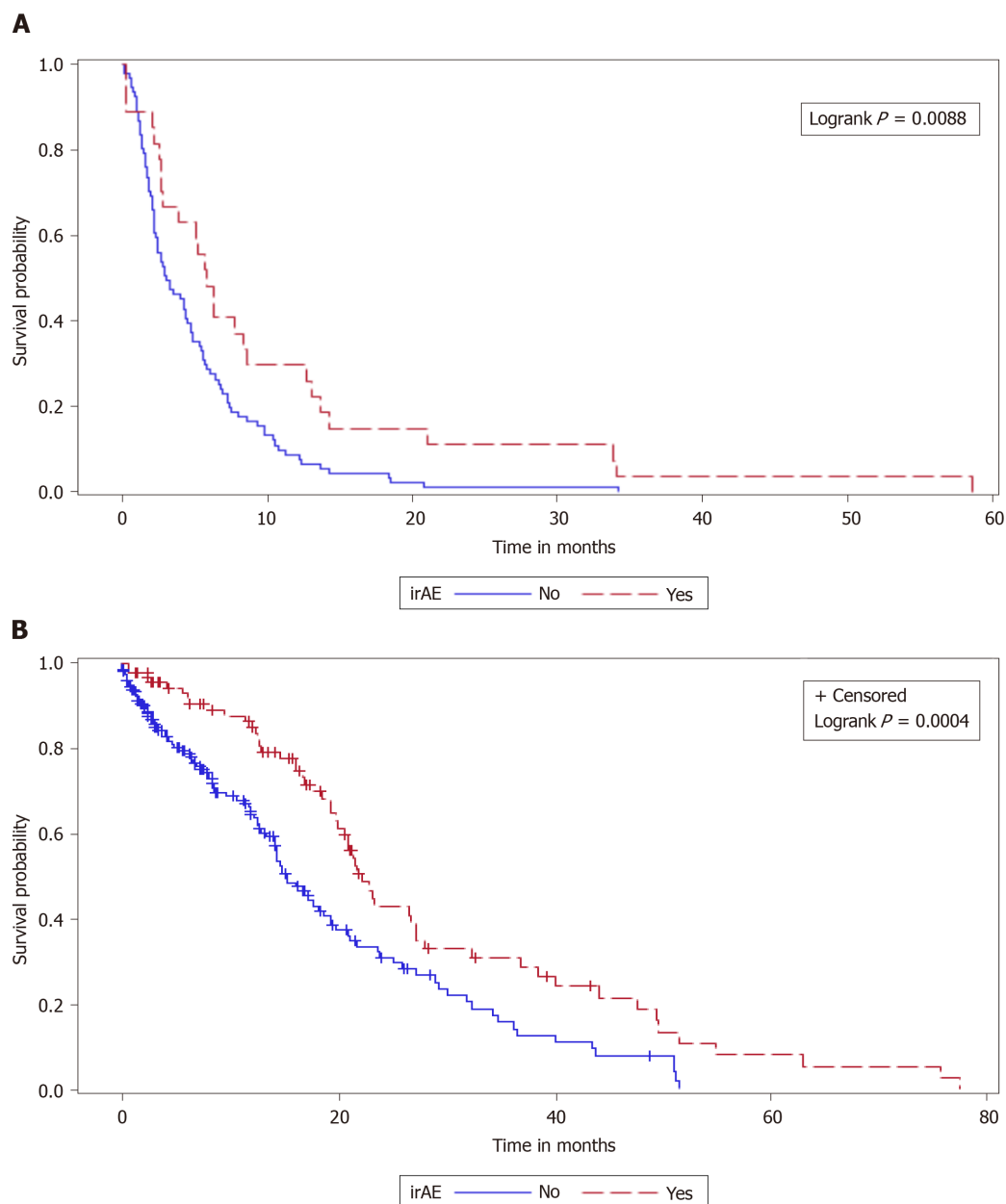
	irAE									<i>P</i> value
	Overall			Yes			No			
	<i>n</i>	Median	(Q1, Q3)	<i>n</i>	Median	(Q1, Q3)	<i>n</i>	Median	(Q1, Q3)	
Number of cycles of immunotherapy	277	5	(2, 12)	82	8.0	(3.0, 19.0)	195	4.0	(2.0, 9.0)	0.0011
LDH	55	243	(171, 290)	25	190	(163, 259)	30	253	(186, 383)	0.0376
Progression free survival (mo)	118	3.9	(1.9, 7.4)	27	5.8	(2.7, 13.0)	91	3.0	(1.7, 6.8)	0.0204
Overall survival (mo)	288	11.5	(2.9, 19.4)	89	17.1	(8.4, 23.5)	199	7.2	(2.1, 15.3)	< 0.0001

irAE: Immune-related adverse events.

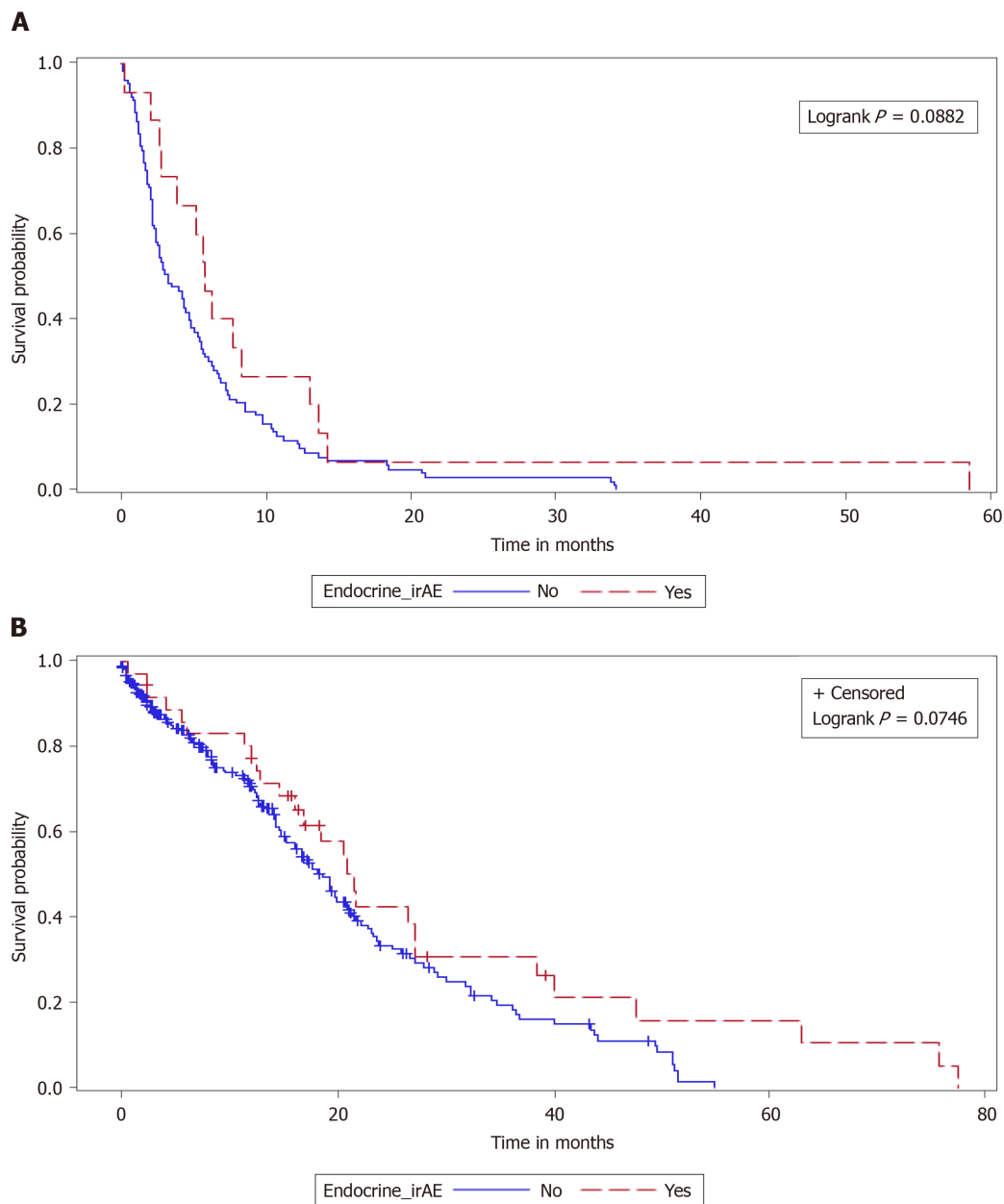
**Table 4 Progression free survival and overall survival calculated using Wilcoxon rank sum test for comparison**

		Overall, <i>n</i> (%)	irAE, <i>n</i> (%)	irAE, Median PFS (mo)	<i>P</i> value	irAE, Median OS (mo)	<i>P</i> value	Endo irAE, <i>n</i> (%)	Endo irAE, Median PFS (mo)	<i>P</i> value	Endo irAE, Median OS (mo)	<i>P</i> value
Gender	Female	129 (44)	41 (45.1)	6.3	0.8977	16.3	0.4756	18 (48.7)	7.7	0.8542	17.0	0.9495
	Male	164 (56)	50 (54.9)	5.7		18.5		19 (51.4)	5.7		17.0	
Race	White	140 (47.8)	55 (60.4)	7.7	0.4601	20.6	0.0237	23 (62.2)	10.4	0.2243	21.8	0.0356
	Black	122 (41.6)	28 (30.8)	5.8		12.9		13 (35.1)	5.2		15.8	
	Others	31 (10.6)	8(8.8)	2.2		16.0		1 (2.7)			6.2	
PDL1 Expression	< 50%	69 (23.5)	16 (17.6)	5.2	0.6985	14.2	0.6468	3 (25.0)	5.2	1.000	16.5	1.0000
	> 50%	32 (10.9)	14 (15.4)	6.3		16.6		9 (75.0)	6.3		15.8	

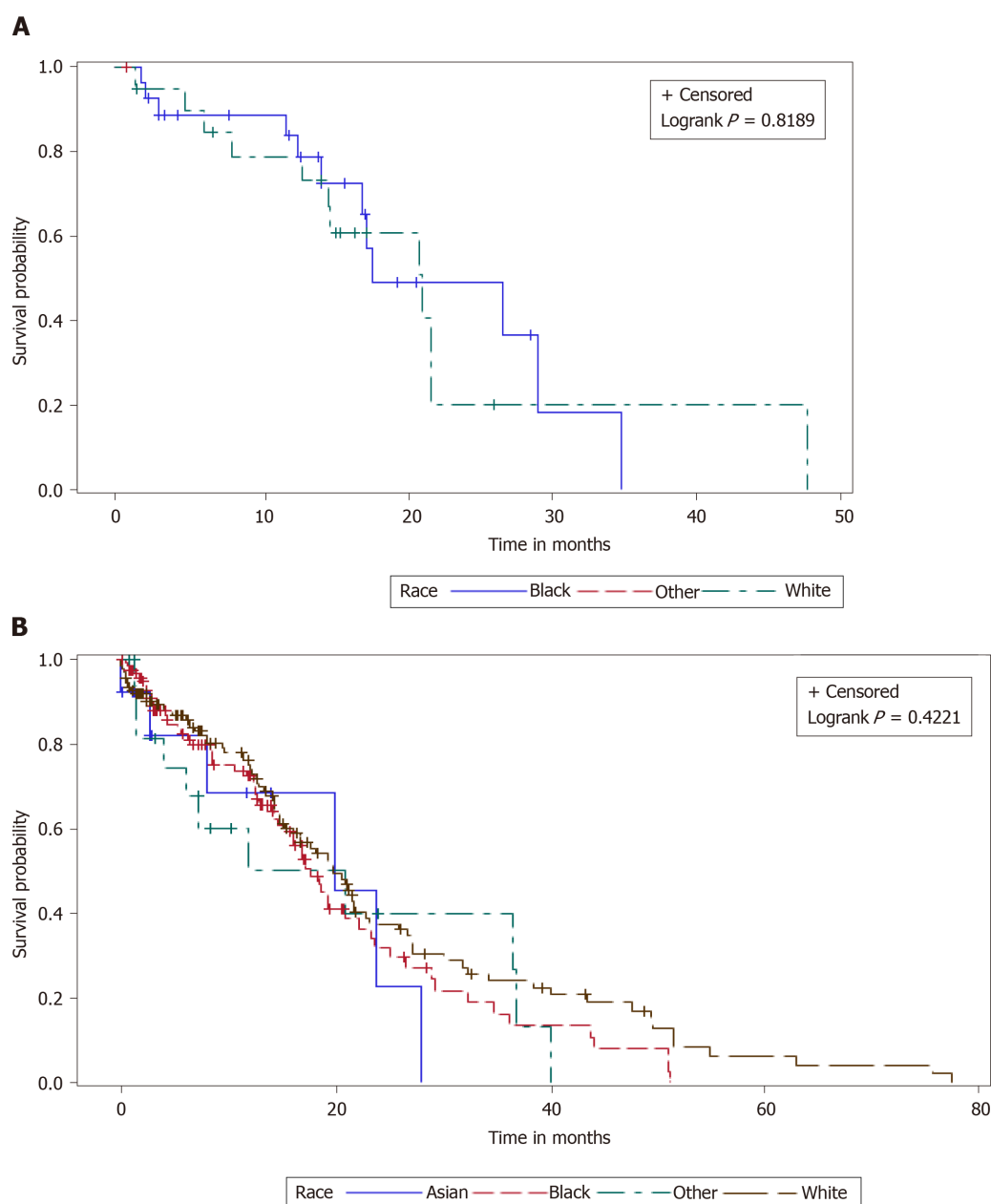
PFS: Progression free survival; OS: Overall survival; irAE: Immune-related adverse events; PDL1: Programmed death ligand 1.



**Figure 1 Kaplan-Meier curves.** Progression free survival (A) and overall survival (B) of immune-related adverse events vs no immune-related adverse events using Kaplan-Meier methods with log-rank test for  $P$  value. irAE: Immune-related adverse events.



**Figure 2** These differences were not seen on Kaplan-Meier analysis. Progression free survival (A) and overall survival (B) of endocrine immune-related adverse events vs no endocrine immune-related adverse events using Kaplan-Meier methods. irAE: Immune-related adverse events.



**Figure 3** These did not translate to better survival probability on Kaplan-Meier analysis. Progression free survival (A) and overall survival (B) based on race using Kaplan-Meier methods.

## ARTICLE HIGHLIGHTS

### Research background

Immune checkpoint inhibitors (ICPi) constitute a revolutionary therapy for various types of cancer. However, their use is associated with the development of several immune-related adverse events (irAEs), especially related to the endocrine system.

### Research motivation

Recently, some studies have suggested that the development of irAEs could result in improved survival outcome.

### Research objectives

This retrospective study aimed to describe the association of development of irAEs to survival outcomes in patients treated with ICPi for advanced stage solid malignancies. Moreover, we investigated the effects of endocrine irAEs on survival and we addressed differences in survival outcomes among different racial groups.



### Research methods

This is a retrospective analysis of data on 293 patients with diagnosis of stage IV solid malignancy who were treated with programmed cell death-protein 1 or programmed death ligand 1 blocker between 1 January 2013 and 31 December 2018. Progression free survival and overall survival were primary endpoints.

### Research results

Out of 293 patients, 91 (31%) had any grade irAEs, amongst which the most common were endocrine (40.7%), followed by dermatological (23.1%) and rheumatologic (18.7%). Caucasians had more irAEs than African Americans (60.4% *vs* 30.8%). Patients with irAE had a lower rate of progression (30.8% *vs* 46.0%,  $P = 0.0140$ ). Median progression free survival was higher in patients with irAE *vs* those without (5.8 *vs* 3.0 mo respectively,  $P = 0.02$ ). Similarly, median overall survival was higher in those with irAE *vs* no irAE (17.1 *vs* 7.2 mo respectively,  $P < 0.0001$ ).

### Research conclusions

This study demonstrates that the development of irAEs is positively correlated with improved survival. It also demonstrates a positive correlation with Caucasian race and overall survival.

### Research perspectives

Future prospective studies designed to evaluate confounding variables for survival such as type of ICPi used, tumor type, and line of treatment are needed to draw definitive conclusions.

## REFERENCES

- 1 Postow MA, Sidlow R, Hellmann MD. Immune-Related Adverse Events Associated with Immune Checkpoint Blockade. *N Engl J Med* 2018; **378**: 158-168 [PMID: 29320654 DOI: 10.1056/NEJMr1703481]
- 2 Darvin P, Toor SM, Sasidharan Nair V, Elkord E. Immune checkpoint inhibitors: recent progress and potential biomarkers. *Exp Mol Med* 2018; **50**: 1-11 [PMID: 30546008 DOI: 10.1038/s12276-018-0191-1]
- 3 De Velasco G, Je Y, Bossé D, Awad MM, Ott PA, Moreira RB, Schutz F, Bellmunt J, Sonpavde GP, Hodi FS, Choueiri TK. Comprehensive Meta-analysis of Key Immune-Related Adverse Events from CTLA-4 and PD-1/PD-L1 Inhibitors in Cancer Patients. *Cancer Immunol Res* 2017; **5**: 312-318 [PMID: 28246107 DOI: 10.1158/2326-6066.CIR-16-0237]
- 4 Barroso-Sousa R, Barry WT, Garrido-Castro AC, Hodi FS, Min L, Krop IE, Tolane SM. Incidence of Endocrine Dysfunction Following the Use of Different Immune Checkpoint Inhibitor Regimens: A Systematic Review and Meta-analysis. *JAMA Oncol* 2018; **4**: 173-182 [PMID: 28973656 DOI: 10.1001/jamaoncol.2017.3064]
- 5 Del Rivero J, Cordes LM, Klubo-Gwiedzinska J, Madan RA, Nieman LK, Gulley JL. Endocrine-Related Adverse Events Related to Immune Checkpoint Inhibitors: Proposed Algorithms for Management. *Oncologist* 2020; **25**: 290-300 [PMID: 32297436 DOI: 10.1634/theoncologist.2018-0470]
- 6 España S, Pérez Montes de Oca A, Marques-Pamies M, Cucurull M, Domenech M, Velarde JM, Salinas I, Moran T, Etxaniz O. Endocrine adverse events related to immune-oncology agents: retrospective experience of a single institution. *Transl Lung Cancer Res* 2020; **9**: 103-110 [PMID: 32206558 DOI: 10.21037/tlcr.2019.12.17]
- 7 Peiró I, Palmero R, Iglesias P, Díez JJ, Simó-Servat A, Marín JA, Jiménez L, Domingo-Domenech E, Mancho-Fora N, Nadal E, Villabona C. Thyroid dysfunction induced by nivolumab: searching for disease patterns and outcomes. *Endocrine* 2019; **64**: 605-613 [PMID: 30805887 DOI: 10.1007/s12020-019-01871-7]
- 8 Freeman-Keller M, Kim Y, Cronin H, Richards A, Gibney G, Weber JS. Nivolumab in Resected and Unresectable Metastatic Melanoma: Characteristics of Immune-Related Adverse Events and Association with Outcomes. *Clin Cancer Res* 2016; **22**: 886-894 [PMID: 26446948 DOI: 10.1158/1078-0432.CCR-15-1136]
- 9 Kim HI, Kim M, Lee SH, Park SY, Kim YN, Kim H, Jeon MJ, Kim TY, Kim SW, Kim WB, Kim SW, Lee DH, Park K, Ahn MJ, Chung JH, Shong YK, Kim WG, Kim TH. Development of thyroid dysfunction is associated with clinical response to PD-1 blockade treatment in patients with advanced non-small cell lung cancer. *Oncoimmunology* 2017; **7**: e1375642 [PMID: 29296533 DOI: 10.1080/2162402X.2017.1375642]
- 10 Osorio JC, Ni A, Chaft JE, Pollina R, Kasler MK, Stephens D, Rodriguez C, Cambridge L, Rizvi H, Wolchok JD, Merghoub T, Rudin CM, Fish S, Hellmann MD. Antibody-mediated thyroid dysfunction during T-cell checkpoint blockade in patients with non-small-cell lung cancer. *Ann Oncol* 2017; **28**: 583-589 [PMID: 27998967 DOI: 10.1093/annonc/mdw640]

- 11 **Teulings HE**, Limpens J, Jansen SN, Zwinderman AH, Reitsma JB, Spuls PI, Luiten RM. Vitiligo-like depigmentation in patients with stage III-IV melanoma receiving immunotherapy and its association with survival: a systematic review and meta-analysis. *J Clin Oncol* 2015; **33**: 773-781 [PMID: [25605840](#) DOI: [10.1200/JCO.2014.57.4756](#)]
- 12 **Cortellini A**, Friedlaender A, Banna GL, Porzio G, Bersanelli M, Cappuzzo F, Aerts JGJV, Giusti R, Bria E, Cortinovis D, Grossi F, Migliorino MR, Galetta D, Passiglia F, Berardi R, Mazzoni F, Di Noia V, Signorelli D, Tuzi A, Gelibter A, Marchetti P, Macerelli M, Rastelli F, Chiari R, Rocco D, Inno A, Di Marino P, Mansueto G, Zoratto F, Santoni M, Tadini M, Ghidini M, Filetti M, Catino A, Pizzuttillo P, Sala L, Occhipinti MA, Citarella F, Marco R, Torniai M, Cantini L, Follador A, Sforza V, Nigro O, Ferrara MG, D'Argento E, Leonetti A, Pettoruti L, Antonuzzo L, Scodes S, Landi L, Guaitoli G, Baldessari C, Bertolini F, Della Grava L, Dal Bello MG, Belderbos RA, De Filippis M, Cecchi C, Ricciardi S, Donisi C, De Toma A, Proto C, Addeo A, Cantale O, Ricciuti B, Genova C, Morabito A, Santini D, Ficorella C, Cannita K. Immune-related Adverse Events of Pembrolizumab in a Large Real-world Cohort of Patients With NSCLC With a PD-L1 Expression  $\geq 50\%$  and Their Relationship With Clinical Outcomes. *Clin Lung Cancer* 2020; **21**: 498-508. e2 [PMID: [32680806](#) DOI: [10.1016/j.clcc.2020.06.010](#)]
- 13 **Riudavets M**, Barba A, Maroto P, Sullivan IG, Anguera G, Páez D, del Carpio L, Callejo A, Blanco CG, Planellas EG, Castillo D, Facundo C, Genua I, Lorente CM, Virgili A, Sebio A, Gallego O, Lopez-Pousa A, Barnadas A, Majem M. Correlation between immune-related adverse events (irAEs) and efficacy in patients with solid tumors treated with immune-checkpoint inhibitors (ICIs). *J Clin Oncol* 2018; **36** (15\_suppl): 3064 [DOI: [10.1200/JCO.2018.36.15\\_suppl.3064](#)]
- 14 **Nazha B**, Mishra M, Pentz R, Owonikoko TK. Enrollment of Racial Minorities in Clinical Trials: Old Problem Assumes New Urgency in the Age of Immunotherapy. *Am Soc Clin Oncol Educ Book* 2019; **39**: 3-10 [PMID: [31099618](#) DOI: [10.1200/EDBK\\_100021](#)]
- 15 **National Cancer Institute**. Common Terminology Criteria for Adverse Events (CTCAE) Version 5.0, 2017 [Internet]. Available from: [https://ctep.cancer.gov/protocoldevelopment/electronic\\_applications/docs/CTCAE\\_v5\\_Quick\\_Reference\\_8.5x11.pdf](https://ctep.cancer.gov/protocoldevelopment/electronic_applications/docs/CTCAE_v5_Quick_Reference_8.5x11.pdf)
- 16 **Das S**, Johnson DB. Immune-related adverse events and anti-tumor efficacy of immune checkpoint inhibitors. *J Immunother Cancer* 2019; **7**: 306 [PMID: [31730012](#) DOI: [10.1186/s40425-019-0805-8](#)]
- 17 **Grangeon M**, Tomasini P, Chaleat S, Jeanson A, Souquet-Bressand M, Khobta N, Bermudez J, Trigui Y, Greillier L, Blanchon M, Boucekine M, Mascaux C, Barlesi F. Association Between Immune-related Adverse Events and Efficacy of Immune Checkpoint Inhibitors in Non-small-cell Lung Cancer. *Clin Lung Cancer* 2019; **20**: 201-207 [PMID: [30442524](#) DOI: [10.1016/j.clcc.2018.10.002](#)]
- 18 **Fehrenbacher L**, Spira A, Ballinger M, Kowanzet M, Vansteenkiste J, Mazieres J, Park K, Smith D, Artal-Cortes A, Lewanski C, Braiteh F, Waterkamp D, He P, Zou W, Chen DS, Yi J, Sandler A, Rittmeyer A; POPLAR Study Group. Atezolizumab versus docetaxel for patients with previously treated non-small-cell lung cancer (POPLAR): a multicentre, open-label, phase 2 randomised controlled trial. *Lancet* 2016; **387**: 1837-1846 [PMID: [26970723](#) DOI: [10.1016/S0140-6736\(16\)00587-0](#)]
- 19 **Gomes-Lima CJ**, Kwagyan J, King F, Fernandez SJ, Burman KD, Veytsman I. A comprehensive meta-analysis of endocrine immune-related adverse events of immune checkpoint inhibitors and outcomes in head and neck cancer and lung cancer. *J Clin Oncol* 2019; **37** (15\_suppl): e14096 [DOI: [10.1200/JCO.2019.37.15\\_suppl.e14096](#)]



Published by **Baishideng Publishing Group Inc**  
7041 Koll Center Parkway, Suite 160, Pleasanton, CA 94566, USA

**Telephone:** +1-925-3991568

**E-mail:** [bpgoffice@wjgnet.com](mailto:bpgoffice@wjgnet.com)

**Help Desk:** <https://www.f6publishing.com/helpdesk>

<https://www.wjgnet.com>

