



62188\_Auto\_Edited.docx

Quotes Excluded  
Bibliography Excluded10%  
SIMILAR

14

Name of Journal: *World Journal of Gastroenterology*

Manuscript NO: 62188

Manuscript Type: ORIGINAL ARTICLE

*Retrospective Study*

Endoscopic diagnosis for colorectal sessile serrated lesions

Nishizawa T *et al.* Endoscopic diagnosis for sessile serrated lesions

Toshihiro Nishizawa, Shuntaro Yoshida, Akira Toyoshima, Tomoharu Yamada, Yoshiki Sakaguchi, Taiga Irako, Hirotoshi Ebinuma, Takanori Kanai, Kazuhiko Koike, Osamu Toyoshima

## Match Overview

1

**Internet** 62 words  
crawled on 21-Jul-2020  
[www.wjgnet.com](http://www.wjgnet.com)

2%

2

**Crossref** 52 words  
Hiroshi Kashida. "Endoscopic diagnosis of sessile serrated polyp: A systematic review", *Digestive Endoscopy*, 2018

2%

3

**Internet** 45 words  
[www.ncbi.nlm.nih.gov](http://www.ncbi.nlm.nih.gov)

1% &gt;

4

**Crossref** 25 words  
Joana Castela, Susana Mão de Ferro, Isadora Rosa, Pedro Lage et al. "Real-Time Optical Diagnosis of Colorectal Po

1%

5

**Internet** 17 words  
crawled on 29-Oct-2020  
[www.thieme-connect.com](http://www.thieme-connect.com)

1%

6

**Crossref** 15 words  
Laxmi B. Chavali, Kun Hu, Anish Sheth, Nan Gao, Wei Xio

&lt;1%



ALL

IMAGES

VIDEOS

245,000 Results

Any time ▾

## Endoscopic diagnosis of colorectal serrated lesions ...

<https://onlinelibrary.wiley.com/doi/full/10.1111/den.12632>

44 rows - According to the recommendations from an expert panel, all **serrated lesions** proximal to the **sigmoid colon** and all **serrated lesions** in the rectosigmoid colon >5 mm in size should be completely resected during **colonoscopy**. 22 Presently, this strategy is not fully accepted in Japan, especially for proximal diminutive **serrated lesions**, because of the lower incidence of **SSA/P** and the effort required for such small **serrated lesions** ...

Cited by: 3

Author: Takahisa Matsuda, Shiro Oka, Hiroaki Ike...

Publish Year: 2016

NO. QUESTION

CHOICES

Q1	What modality do you usually use for differential diagnosis of dimin...	a. White light
Q1	What modality do you usually use for differential diagnosis of dimin...	b. NBI without magnification
Q1	What modality do you usually use for differential diagnosis of dimin...	c. NBI with magnification
Q1	What modality do you usually use for differential diagnosis of dimin...	d. Indigocarmine

See all 44 rows on [onlinelibrary.wiley.com](https://onlinelibrary.wiley.com)

## Endoscopic diagnosis and treatment planning for colorectal ...

<https://www.ncbi.nlm.nih.gov/pmc/articles/PMC6949236>

Jan 08, 2020 - **Colonoscopy** can effectively detect **colorectal polyps** of various histological subtypes, including hyperplastic, adenomatous, and malignant polyps. Premalignant polyps, such as adenoma, should be resected **endoscopically** to prevent their development to **colorectal cancer (CRC)**1.

Cited by: 8

Author: Eun Mi Song, Beomhee Park, Chun-Ae H...

Publish Year: 2020

## Images of Endoscopic diagnosis For Colorectal sessile serrate...

[bing.com/images](https://bing.com/images)



Endoscopic diagnosis for colorectal sessile serrated lesions



ALLIMAGESVIDEOS

245,000 ResultsAny time

Endoscopic diagnosis of colorectal serrated lesions ...  
<https://onlinelibrary.wiley.com/doi/10.1111/den.12632>

44 rows · Introduction. **Serrated lesions** of the colorectum were previously called ‘**hyperplastic polyps**’ ...

**Cited by:** 3      **Author:** Takahisa Matsuda, Shiro Oka, Hiroaki Ik...  
**Publish Year:** 2016

NO.	QUESTION	CHOICES
Q1	What modality do you usually use for differential diagnosis of dimin...	a. White light
Q1	What modality do you usually use for differential diagnosis of dimin...	b. NBI without magnification
Q1	What modality do you usually use for differential diagnosis of dimin...	c. NBI with magnification
Q1	What modality do you usually use for differential diagnosis of dimin...	d. Indigocarmine

See all 44 rows on [onlinelibrary.wiley.com](https://onlinelibrary.wiley.com)

Endoscopic diagnosis of sessile serrated adenoma/polyp ...  
<https://pubmed.ncbi.nlm.nih.gov/30090005>

Sessile **serrated adenoma/polyps (SSA/Ps)** are early precursor lesions in the **serrated neoplasia** pathway, which **results in colorectal carcinomas with BRAF mutations, methylation for DNA repair genes, a CpG island methylator phenotype, and high levels of microsatellite instability**. Some of these lesions can rapidly become dysplastic or invasive carcinomas that exhibit high lymphatic ...

**Cited by:** 4      **Author:** Takashi Murakami, Naoto Sakamoto, Ak...



ALL

IMAGES

VIDEOS

MAPS

NEWS

SHOPPING

271,000 Results

Any time ▾

Open links in new tab 

## Endoscopic diagnosis of colorectal serrated lesions ...

<https://onlinelibrary.wiley.com/doi/full/10.1111/den.12632>

44 rows · Introduction. **Serrated lesions** of the colorectum were previously called 'hyperplastic polyps' and were thought to have no malignancy except for large **lesions**. 1, 2 Later, the term '**sessile serrated adenoma/polyp (SSA/P)**' was proposed and such **lesions** were considered precursors of **colorectal cancer (CRC)** with early BRAF mutation, progressive DNA hypermethylation, and late development of ...

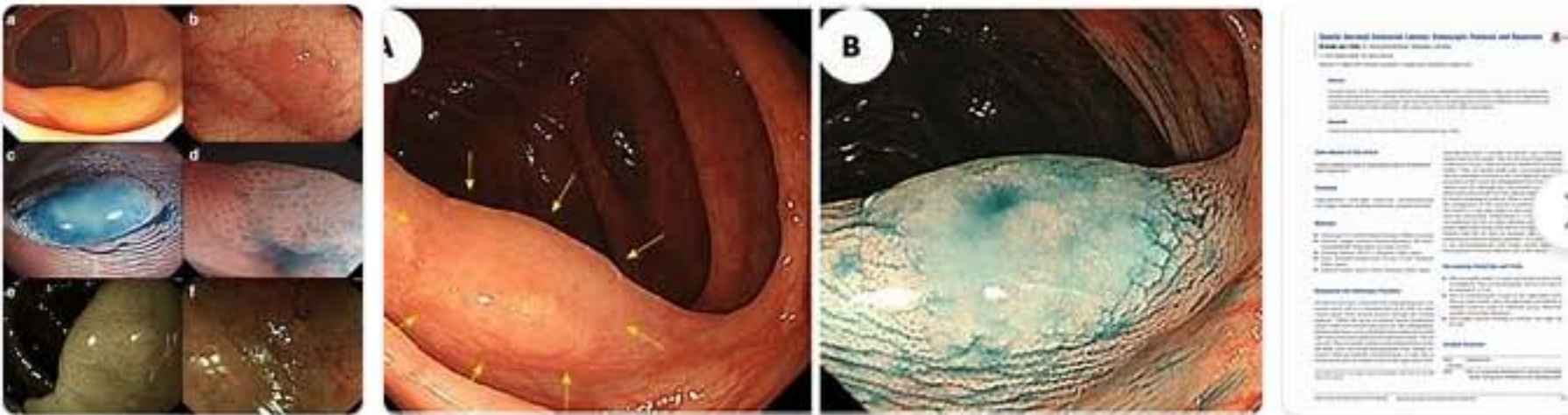
**Cited by:** 3      **Author:** Takahisa Matsuda, Shiro Oka, Hiroaki Ikem...  
**Publish Year:** 2016

NO.	QUESTION	CHOICES
Q1	What modality do you usually use for differential diagnosis of dimin...	a. White light
Q1	What modality do you usually use for differential diagnosis of dimin...	b. NBI without magnification
Q1	What modality do you usually use for differential diagnosis of dimin...	c. NBI with magnification
Q1	What modality do you usually use for differential diagnosis of dimin...	d. Indigocarmine

[See all 44 rows on onlinelibrary.wiley.com](#)

## Images of Endoscopic diagnosis For Colorectal sessile serrated Le...

[bing.com/images](https://bing.com/images)



See all images >

## Related searches

- sessile serrated lesion **polyp**
- sessile serrated lesion
- sessile serrated lesion **adenoma**
- sessile lesions **in colon**
- sessile serrated lesion **without dysplasia**
- sessile lesion **oral**
- sessile serrated **adenoma colon polyp**
- sessile lesion **bladder**