

## Match Overview

1	Internet 83 words crawled on 19-Feb-2020 <a href="http://www.elsevier.es">www.elsevier.es</a>	2%
2	Internet 34 words crawled on 03-Aug-2020 <a href="http://mafiadoc.com">mafiadoc.com</a>	1%
3	Crossref 29 words Ju Dong Yang, Fowsiyo Ahmed, Kristin C. Mara, Benyam D. Addissie, Alina M. Allen, Gregory J. Gores, Lewis R. Ro	1%
4	Crossref 15 words Fangyuan Gao, Xiaoshu Li, Gang Wan, Yuxin Li, Qun Zhan g, Yao Liu, Huimin Liu, Hai Li, Xianbo Wang. "Development	<1%
5	Crossref 15 words Marion J. Franz. "Protein and diabetes: Much advice, little r esearch", Current Diabetes Reports, 10/2002	<1%
6	Internet 15 words crawled on 28-Oct-2020 <a href="http://www.frontiersin.org">www.frontiersin.org</a>	<1%
7	Internet 14 words crawled on 19-Sep-2018 <a href="http://www.e-sciencecentral.org">www.e-sciencecentral.org</a>	<1%
8	Crossref 12 words Yafei Guo, Zebin Zhu, Wei Wu, Dehao Huang et al. "Liver Transplantation in a Patient With Acute-on-Chronic Liver F	<1%
	Internet 12 words	<1%

**Name of Journal:** *World Journal of Gastroenterology*

**Manuscript NO:** 63213

**Manuscript Type:** ORIGINAL ARTICLE

*Retrospective Cohort Study*

**Effect of type 2 diabetic mellitus in the prognosis of acute-on-chronic liver failure patients in China**

DM affected the prognosis of ACLF

## Abstract

### BACKGROUND

The acute-on-chronic liver failure (ACLF) patients had a high short-term mortality rate, and the severity evaluation of ACLF was necessary for prognostication. Therefore, it was meaningful to evaluate the association between type 2 diabetic mellitus (DM) and ACLF and further explore the feasibility of using DM as a prognostic indicator in ACLF patients.



ALL

IMAGES

VIDEOS

321,000 Results

Any time ▼

## Impact of Diabetes Mellitus on the Prognosis of Patients ...

<https://journals.plos.org/plosone/article?id=10.1371/journal.pone.0113858> ▼

Dec 01, 2014 · Background: The influence of **diabetes mellitus** (DM) on the **prognosis of patients** with hepatocellular carcinoma (HCC) remains controversial. Here we investigated the impact of DM on the **prognosis** of such **patients** after curative hepatectomy. Methods: A consecutive cohort of 505 **patients** with HCC (134 with DM, 371 without) underwent curative hepatectomy were retrospectively evaluated.

**Cited by:** 23

**Author:** Yan-Yan Wang, Shan Huang, Jian-Hong Zh...

**Publish Year:** 2014

## Type 2 Diabetes Mellitus Guide: Causes, Symptoms and ...

<https://www.drugs.com/health-guide/type-2-diabetes-mellitus.html> ▼



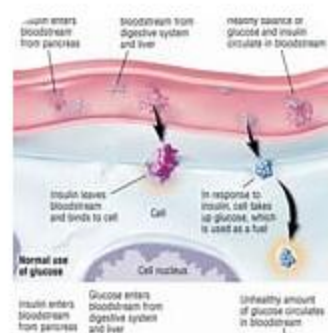
What Is It?

Symptoms

Diagnosis

Expected Duration

Prever



Type 2 diabetes is a chronic disease. It is characterized by **high levels of sugar in the blood**. Type 2 diabetes is also called type 2 diabetes mellitus and adult-onset diabetes. That's because it used to start almost always in middle- and late-adulthood. However, more and more children and teens are developing this condition. Type 2 diabetes is much more common than type 1 diabetes, and is really a different disease. But it shares with t...

[See more on drugs.com](#)

### PEOPLE ALSO ASK

What is the prevalence of diabetes in China?





ALL IMAGES VIDEOS

275,000 Results Any time ▾

## Impact of Diabetes Mellitus on the Prognosis of Patients ...

<https://journals.plos.org/plosone/article?id=10.1371/journal.pone.0113858> ▾

Dec 01, 2014 · Background: The influence of **diabetes mellitus** (DM) on the **prognosis of patients** with hepatocellular carcinoma (HCC) remains controversial. Here we investigated the impact of DM on the **prognosis** of such **patients** after curative hepatectomy. Methods: A consecutive cohort of 505 **patients** with HCC (134 with DM, 371 without) underwent curative hepatectomy were retrospectively evaluated.

**Cited by:** 23 **Author:** Yan-Yan Wang, Shan Huang, Jian-Hong Zh...

**Publish Year:** 2014

## Diabetes Mellitus Type 2 - StatPearls - NCBI Bookshelf

<https://www.ncbi.nlm.nih.gov/books/NBK513253>

Nov 20, 2020 · Chronic hyperglycemia in synergy with the other metabolic aberrations in **patients** with **diabetes mellitus** can cause damage to various organ systems, leading to the development of disabling and life-threatening health complications, most prominent of which are microvascular (retinopathy, nephropathy, and neuropathy) and macrovascular complications leading to a 2-fold to a 4-fold ...

### PEOPLE ALSO ASK

What are the long term complications of diabetes? ▾

What are the side effects of diabetes mellitus type 2? ▾

Which of the following conditions is a complication of diabetes? ▾

Feedback

## Type 2 diabetes - Symptoms and causes - Mayo Clinic

<https://www.mayoclinic.org/diseases-conditions/...> ▾



Overview

Symptoms

Causes

Risk Factors

Complications



Type 2 diabetes is an impairment in the way the body regulates and uses sugar (glucose) as a fuel. This long-term (chronic) condition results in too much sugar circulating in the bloodstream. Eventually, **high blood sugar levels** can lead to disorders of the circulatory, nervous and immune systems. In type 2 diabetes, there are primarily two interrelated problems at work. Your pancreas does not produce enough insulin — a hormone that re...

[See more on mayoclinic.org](https://www.mayoclinic.org)

**Published:** Jan 20, 2021

## Search Tools

Turn off Hover Translation (关闭取词)