

## Match Overview



1 Internet 16 words  
crawled on 29-Aug-2017  
[core.ac.uk](http://core.ac.uk)

&lt;1%

**Name of Journal:** *World Journal of Psychiatry*

**Manuscript NO:** 64822

**Manuscript Type:** MINIREVIEWS

**How non-rapid eye movement sleep and Alzheimer pathology are linked**

Falter A *et al.* NREM sleep and Alzheimer pathology

Annelies Falter, Maarten J A Van Den Bossche

ALL

IMAGES

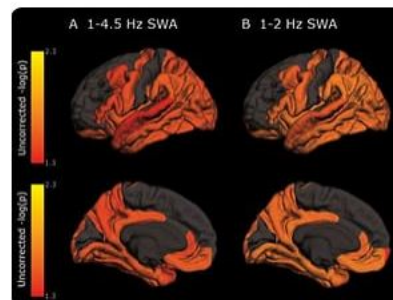
VIDEOS

🧡 Add the Give with Bing extension >

24,700 Results

Any time ▾

**Non-rapid eye movement (non-REM) sleep** slow wave activity was inversely **related** to **Alzheimer's pathology**, especially tauopathy, with the association most evident at the lowest 1- to 2-Hz frequencies, according to Brendan Lucey, MD, and David Holtzman, MD, both of Washington University in St. Louis, and colleagues.



[Deep Sleep Linked to Early Alzheimer's Signs | MedPage Today](#)

[www.medpagetoday.com/neurology/alzheimersdisease/77361](http://www.medpagetoday.com/neurology/alzheimersdisease/77361)

Was this helpful? 👍 👎

PEOPLE ALSO ASK

How does sleep affect the development of Alzheimer's disease? ▾

How are beta amyloid plaques related to sleep quality? ▾

Can you predict the onset of Alzheimer's disease? ▾

How does sleep cleanse the brain of beta amyloid? ▾

Feedback

[Reduced non-rapid eye movement sleep is associated with ...](#)

<https://stm.sciencemag.org/content/11/474/eaau6550> ▾



Jan 09, 2019 · Lucey et al. analyzed sleep patterns in aging cognitively normal subjects and showed that non-rapid eye movement (NREM) sleep negatively correlated with tau

Search Tools

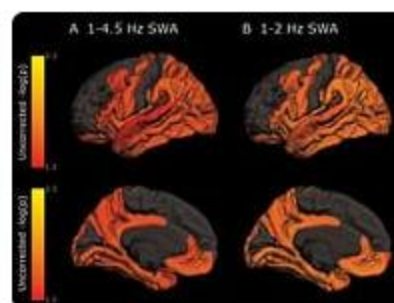
[Turn off Hover Translation \(关闭取词\)](#)

[All](#) [Images](#) [Videos](#)

145,000 Results

Any time ▾

**Non-rapid eye movement** (non-REM) **sleep** slow wave activity was inversely **related** to **Alzheimer's pathology**, especially tauopathy, with the association most evident at the lowest 1- to 2-Hz frequencies, according to Brendan Lucey, MD, and David Holtzman, MD, both of Washington University in St. Louis, and colleagues.



[Deep Sleep Linked to Early Alzheimer's Signs | MedPage Today](#)

[www.medpagetoday.com/neurology/alzheimersdisease/77361](http://www.medpagetoday.com/neurology/alzheimersdisease/77361)

Was this helpful?

## PEOPLE ALSO ASK

How does sleep affect the development of Alzheimer's disease? ▾

What happens to the brain during non REM sleep? ▾

How are beta amyloid plaques related to sleep quality? ▾

How does sleep affect the development of plaques? ▾

[Feedback](#)

[Reduced non-rapid eye movement sleep is associated with ...](#)

<https://pubmed.ncbi.nlm.nih.gov/30626715>

**Sleep** is increasingly recognized as a potential marker for AD **pathology** and future risk of cognitive impairment. Previous studies in animal models and humans have associated decreased **non-rapid eye movement** (NREM) **sleep** slow wave activity (SWA) with A $\beta$  deposition. In this study, we analyzed cognitive performance, brain imaging, and ...

**Cited by:** 131

**Author:** Brendan P. Lucey, Austin McCullough, Eric ...

**Publish Year:** 2019

[Reduced non-rapid eye movement sleep is associated with ...](#)

<https://stm.sciencemag.org/content/11/474/eaau6550> ▾

Jan 09, 2019 · Lucey et al. analyzed sleep patterns in aging cognitively normal subjects and showed that non-rapid eye movement (NREM) sleep **negatively** correlated with **tau pathology** and **A $\beta$  deposition** ...

**Cited by:** 131

**Author:** Brendan P. Lucey, Austin McCullough, Eric ...

## Search Tools

[Turn off Hover Translation \(关闭取词\)](#)