



67806_Auto_Edited.docx

Quotes Excluded
Bibliography Excluded

2%
SIMILAR

Match Overview

1 Crossref 14 words
Jung Ho Kim, Gyeong Hoon Kang. "Evolving pathologic conc...
pts of serrated lesions of the colorectum", Journal of Patholog

1%

Name of Journal: *World Journal of Gastroenterology*

Manuscript NO: 67806

Manuscript Type: EDITORIAL

Serrated Lesions: A Challenging Enemy

Serrated Lesions

Alexa Trovato, Alla Turshudzhyan, Micheal Tadros



ALL

IMAGES

VIDEOS

58,700 Results

Any time ▾

[Serrated lesions of the colorectum: review and ...](#)

<https://pubmed.ncbi.nlm.nih.gov/22710576>

Serrated lesions have a distinct endoscopic appearance, and several lines of evidence suggest that on average they are more **difficult** to detect than conventional adenomatous polyps. Effective colonoscopy requires an endoscopist trained in the endoscopic appearance of **serrated lesions**.

Cited by: 1068

Author: Douglas K. Rex, Dennis J. Ahnen, John ...

Publish Year: 2012

Missing: ~~Enemy~~ | Must include: [Enemy](#)

[Sessile Serrated Polyps: Detection, Eradication, and ...](#)

<https://www.ncbi.nlm.nih.gov/pmc/articles/PMC4427517>

The sessile **serrated** polyp (SSP), also known as sessile **serrated** adenoma, is the evil twin among the colorectal cancer precursors. As will be described, these **lesions** have multiple aliases (**serrated** adenoma, **serrated** polyp or **serrated lesion** among others), they hang out in a bad neighborhood (the poorly prepped right colon), they hide behind a mask of mucus, they are **difficult** for witnesses ...

Cited by: 23

Author: Joshua C. Obuch, Courtney M. Pigott, De...

Publish Year: 2015

Search Tools

[Turn off Hover Translation \(关闭取词\)](#)

Images of serrated Lesions A Challenging Enemy

<bing.com/images>

All Images Videos

61,100 Results Any time ▾

Serrated lesions of the colorectum: review and ...

<https://pubmed.ncbi.nlm.nih.gov/22710576>

Serrated lesions have a distinct endoscopic appearance, and several lines of evidence suggest that on average they are more **difficult** to detect than conventional adenomatous polyps. Effective colonoscopy requires an endoscopist trained in the endoscopic appearance of **serrated lesions**.

Cited by: 1068 **Author:** Douglas K. Rex, Dennis J. Ahnen, John A. B...

Publish Year: 2012

Missing: **enemy** | Must include: **enemy**

Sessile serrated lesion of the colon | MyPathologyReport.ca

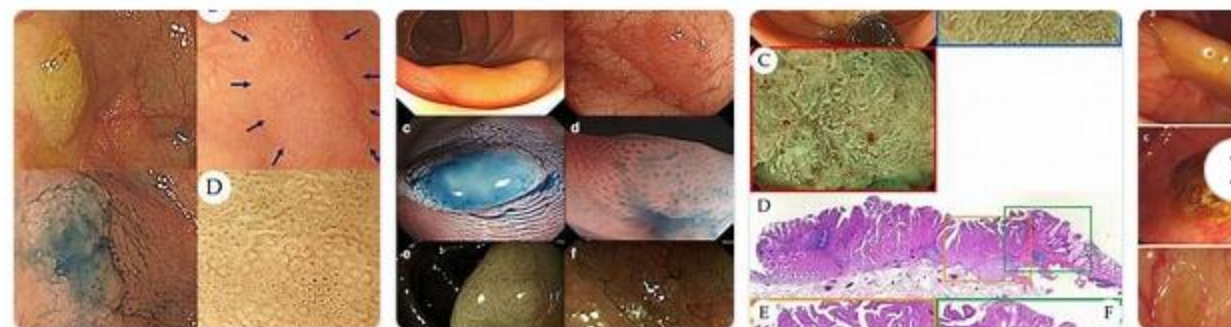
<https://www.mypathologyreport.ca/sessile-serrated-lesion-of-the-colon> ▾

Jul 23, 2021 · All sessile **serrated lesions** require complete removal at colonoscopy but the presence of dysplasia may require a quicker repeat colonoscopy if the removal wasn't complete on the first visit. Cancer in the sessile **serrated lesion** Your pathologist will carefully examine the sessile **serrated lesions** for any evidence of cancer.

Missing: **enemy** | Must include: **enemy**

Images of serrated lesions A Challenging Enemy

<bing.com/images>



See all images >

Hyperplastic polyp or sessile serrated lesion? The ...

<https://pubmed.ncbi.nlm.nih.gov/33298116>

Sessile **serrated lesions** and hyperplastic polyps are types of **serrated** polyps which confer different malignancy risks, and surveillance intervals, and are sometimes **difficult** to discriminate. Our aim was to reclassify previously diagnosed hyperplastic polyps as sessile **serrated lesions** or confirmed hyperplastic

Sessile serrated adenoma

Symptoms

Diagnosis

Causes

Treatments

>

A sessile serrated lesion is a premalignant flat lesion of the colon, predominantly seen in the cecum and ascending colon. SSLs are thought to lead to colorectal cancer through the serrated pathway. This differs from most colorectal cancer, which arises from mutations starting with inactivation of the APC gene.

W Wikipedia

People also search for

Polyp

Adenoma

Colorectal Polyp

Villous adenoma

Colon Cancer

See more ▾

Data from: Wikipedia

Suggest an edit

Search Tools

Turn off Hover Translation (关闭取词)