

**Non-alcoholic fatty liver disease and diabetes**<https://pubmed.ncbi.nlm.nih.gov/26856933>

Non-alcoholic **fatty liver disease** (NAFLD) and type 2 **diabetes** (T2DM) are common conditions that regularly co-exist and can act synergistically to drive adverse outcomes. The presence of both NAFLD and T2DM increases the likelihood of the development of complications of **diabetes** ...

Cited by: 300 Author: Jonathan M. Hazlehurst, Conor Woods, T...  
Publish Year: 2016

**Fatty Liver Disease: An Underdiagnosed Complication of ...**<https://www.niddk.nih.gov/health-information/professionals/diabetes-discoveries...>

Nov 16, 2020 · Health care professionals may wonder when to order a liver biopsy or refer a patient to a hepatologist. I would suggest the following tips about when to refer patients to a liver specialist. **Patients** with an ALT in the 40s or above definitely have fat in the liver and are at risk for NASH, especially if they have type 2 diabetes and obesity.

## PEOPLE ALSO ASK

Which is worse type 2 diabetes or non alcoholic fatty liver disease?	▼
What do you mean by nonalcoholic fatty liver disease?	▼
When to see a hepatologist for fatty liver disease?	▼

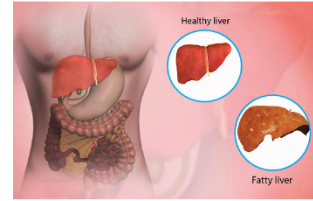


Have you ever talked with a living search engine?

Say something...

**Non-Alcoholic Fatty Liver Disease**

Medical Condition




A condition in which fat accumulates in the liver in people who drink little or no alcohol.

- 📊 Very common (More than 3 million cases per year in US)
- 🧪 Requires lab test or imaging
- 💊 Treatments can help manage condition, no known cure
- ⏳ Can last several years or be lifelong

29-Jul-2021 10:56AM

4891 words • 77 matches • 35 sources

FAQ

 iThenticate®

68262\_Auto\_Edited.docx

Quotes Excluded  
Bibliography Excluded

30%  
(95% ID)

**Name of Journal:** *World Journal of Diabetes*

**Manuscript NO:** 68262

**Manuscript Type:** REVIEW

**Non-Alcoholic fatty liver disease in Diabetes : When to refer to the Hepatologist?**

Hepatologist referral of diabetic with NAFLD

Reshu Khandelwal, Anuradha S Dassanayake, Hari S Conjeevaram, Shivaram P Singh

Match Overview

1

Internet 182 words  
crawled on 06-Jan-2021  
[www.hindawi.com](http://www.hindawi.com)

4%

2

Internet 156 words  
crawled on 17-Sep-2017  
[discovery.sci.auk](http://discovery.sci.auk)

3%

3

Internet 140 words  
crawled on 14-Apr-2020  
[easi.eu](http://easi.eu)

3%

4

Internet 124 words  
crawled on 04-Oct-2020  
[care.diabetespjournals.org](http://care.diabetespjournals.org)

2%

5

Internet 84 words  
crawled on 19-May-2020  
[www.frontiersin.org](http://www.frontiersin.org)

2%

6

Internet 81 words  
crawled on 28-Nov-2020  
[dmsjournal.biomedcentral.com](http://dmsjournal.biomedcentral.com)

2%

7

Internet 62 words  
crawled on 31-Jan-2020  
[res.majp.com](http://res.majp.com)

1%

8

Crossref 56 words  
[Zohair M. Younsi](#), [Kathleen E. Corey](#), [Niam Alkhouri](#), [Maz](#)

1%

1

2

3

4

5

6

7

8

9

10

11

12

13

14

15

16

17

18

19

20

21

22

23

24

25

26

27

28

29

30

31

32

33

34

35

36

37

38

39

40

41

42

43

44

45

46

47

48

49

50

51

52

53

54

55

56

57

58

59

60

61

62

63

64

65

66

67

68

69

70

71

72

73

74

75

76

77

Page: 1 of 16

Text-Only Report

国内版

国际版

Non-alcoholic fatty liver disease in diabetes: When to refer to the l



ALL

IMAGES

VIDEOS

124,000 Results

Any time ▾

## Non-alcoholic fatty liver disease and diabetes

<https://pubmed.ncbi.nlm.nih.gov/26856933>

Non-alcoholic fatty liver disease (NAFLD) and type 2 diabetes (T2DM) are common conditions that regularly co-exist and can act synergistically to drive adverse outcomes. The presence of both NAFLD and T2DM increases the likelihood of the development of complications of diabetes ...

Cited by: 301

Author: Jonathan M. Hazlehurst, Conor Woods, T...

Publish Year: 2016

## Fatty Liver Disease: An Underdiagnosed Complication of ...

<https://www.niddk.nih.gov/health-information/professionals/diabetes-discoveries...> ▾

Nov 18, 2020 · Health care professionals may wonder when to order a liver biopsy or refer a patient to a hepatologist. I would suggest the following tips about when to refer patients to a liver specialist. **Patients with an ALT in the 40s or above definitely have fat in the liver and are at risk for NASH,** especially if they have type 2 diabetes and obesity.

### PEOPLE ALSO ASK

Which is worse type 2 diabetes or non alcoholic fatty liver disease? ▾

What do you mean by nonalcoholic fatty liver disease? ▾

How is fatty liver disease related to diabetes mellitus? ▾

When to see a hepatologist for fatty liver disease? ▾

Feedback

## Fatty liver disease in diabetes mellitus

<https://www.ncbi.nlm.nih.gov/pmc/articles/PMC4405411>

Jan 03, 2015 · Non-alcoholic fatty liver disease (NAFLD) is highly prevalent in type 2 diabetes mellitus (T2DM), likely reflecting the frequent occurrence of obesity and insulin resistance in T2DM. NAFLD also can occur in type 1 DM (T1DM), but must be distinguished from the more common glycogen hepatopathy as a cause of hepatomegaly and liver function ...

Cited by: 143

Author: Harikrashna B. Bhatt, Robert J. Smith