

World Journal of *Gastroenterology*

World J Gastroenterol 2022 May 28; 28(20): 2152-2250



MINIREVIEWS

- 2152 Artificial intelligence: Emerging player in the diagnosis and treatment of digestive disease
Chen HY, Ge P, Liu JY, Qu JL, Bao F, Xu CM, Chen HL, Shang D, Zhang GX
- 2163 Advances in medical treatment for pancreatic neuroendocrine neoplasms
Li YL, Cheng ZX, Yu FH, Tian C, Tan HY
- 2176 Radiomics for the detection of microvascular invasion in hepatocellular carcinoma
Ly K, Cao X, Du P, Fu JY, Geng DY, Zhang J

ORIGINAL ARTICLE

Basic Study

- 2184 Long noncoding RNA TNFRSF10A-AS1 promotes colorectal cancer through upregulation of HuR
Wang DD, Sun DL, Yang SP, Song J, Wu MY, Niu WW, Song M, Zhang XL

Retrospective Cohort Study

- 2201 Digital single-operator video cholangioscopy improves endoscopic management in patients with primary sclerosing cholangitis-a retrospective observational study
Bokemeyer A, Lenze F, Stoica V, Sensoy TS, Kabar I, Schmidt H, Ullerich H

Retrospective Study

- 2214 Gadolinium-ethoxybenzyl-diethylenetriamine penta-acetic acid-enhanced magnetic resonance imaging for evaluating fibrosis regression in chronic hepatitis C patients after direct-acting antiviral
Li XH, Huang R, Yang M, Wang J, Gao YH, Jin Q, Ma DL, Wei L, Rao HY

Observational Study

- 2227 First prospective European study for the feasibility and safety of magnetically controlled capsule endoscopy in gastric mucosal abnormalities
Szalai M, Helle K, Lovász BD, Finta Á, Rosztóczy A, Oczella L, Madácsy L

CASE REPORT

- 2243 Endoscopic management of intramural spontaneous duodenal hematoma: A case report
Valerii G, Ormando VM, Cellini C, Sacco L, Barbera C

LETTER TO THE EDITOR

- 2248 Future prospect of "Gut microbiome composition can predict the response to nivolumab in advanced hepatocellular carcinoma patients"
Kang YB, Cai Y

ABOUT COVER

Editorial Board Member of *World Journal of Gastroenterology*, Donatella Barisani, MD, MSc, Associate Professor, School of Medicine and Surgery, University of Milano Bicocca, Via Cadore 48, Monza 20900, Italy.
donatella.barisani@unimib.it

AIMS AND SCOPE

The primary aim of *World Journal of Gastroenterology* (WJG, *World J Gastroenterol*) is to provide scholars and readers from various fields of gastroenterology and hepatology with a platform to publish high-quality basic and clinical research articles and communicate their research findings online. WJG mainly publishes articles reporting research results and findings obtained in the field of gastroenterology and hepatology and covering a wide range of topics including gastroenterology, hepatology, gastrointestinal endoscopy, gastrointestinal surgery, gastrointestinal oncology, and pediatric gastroenterology.

INDEXING/ABSTRACTING

The WJG is now indexed in Current Contents®/Clinical Medicine, Science Citation Index Expanded (also known as SciSearch®), Journal Citation Reports®, Index Medicus, MEDLINE, PubMed, PubMed Central, and Scopus. The 2021 edition of Journal Citation Report® cites the 2020 impact factor (IF) for WJG as 5.742; Journal Citation Indicator: 0.79; IF without journal self cites: 5.590; 5-year IF: 5.044; Ranking: 28 among 92 journals in gastroenterology and hepatology; and Quartile category: Q2. The WJG's CiteScore for 2020 is 6.9 and Scopus CiteScore rank 2020: Gastroenterology is 19/136.

RESPONSIBLE EDITORS FOR THIS ISSUE

Production Editor: *Yun-Xi Chen*; Production Department Director: *Xu Guo*; Editorial Office Director: *Ze-Mao Gong*.

NAME OF JOURNAL

World Journal of Gastroenterology

ISSN

ISSN 1007-9327 (print) ISSN 2219-2840 (online)

LAUNCH DATE

October 1, 1995

FREQUENCY

Weekly

EDITORS-IN-CHIEF

Andrzej S Tarnawski

EDITORIAL BOARD MEMBERS

<http://www.wjgnet.com/1007-9327/editorialboard.htm>

PUBLICATION DATE

May 28, 2022

COPYRIGHT

© 2022 Baishideng Publishing Group Inc

INSTRUCTIONS TO AUTHORS

<https://www.wjgnet.com/bpg/gerinfo/204>

GUIDELINES FOR ETHICS DOCUMENTS

<https://www.wjgnet.com/bpg/GerInfo/287>

GUIDELINES FOR NON-NATIVE SPEAKERS OF ENGLISH

<https://www.wjgnet.com/bpg/gerinfo/240>

PUBLICATION ETHICS

<https://www.wjgnet.com/bpg/GerInfo/288>

PUBLICATION MISCONDUCT

<https://www.wjgnet.com/bpg/gerinfo/208>

ARTICLE PROCESSING CHARGE

<https://www.wjgnet.com/bpg/gerinfo/242>

STEPS FOR SUBMITTING MANUSCRIPTS

<https://www.wjgnet.com/bpg/GerInfo/239>

ONLINE SUBMISSION

<https://www.f6publishing.com>



Artificial intelligence: Emerging player in the diagnosis and treatment of digestive disease

Hai-Yang Chen, Peng Ge, Jia-Yue Liu, Jia-Lin Qu, Fang Bao, Cai-Ming Xu, Hai-Long Chen, Dong Shang, Gui-Xin Zhang

Specialty type: Gastroenterology and hepatology

Provenance and peer review:

Invited article; Externally peer reviewed.

Peer-review model: Single blind

Peer-review report's scientific quality classification

Grade A (Excellent): A

Grade B (Very good): B

Grade C (Good): 0

Grade D (Fair): 0

Grade E (Poor): 0

P-Reviewer: Salvi M, Italy; Shafqat S, Pakistan

Received: September 24, 2021

Peer-review started: September 24, 2021

First decision: November 16, 2021

Revised: November 24, 2021

Accepted: April 24, 2022

Article in press: April 24, 2022

Published online: May 28, 2022



Hai-Yang Chen, Peng Ge, Jia-Yue Liu, Jia-Lin Qu, Fang Bao, Cai-Ming Xu, Hai-Long Chen, Dong Shang, Gui-Xin Zhang, Laboratory of Integrative Medicine, The First Affiliated Hospital of Dalian Medical University, Dalian 116011, Liaoning Province, China

Hai-Yang Chen, Peng Ge, Jia-Yue Liu, Fang Bao, Cai-Ming Xu, Hai-Long Chen, Dong Shang, Gui-Xin Zhang, Department of General Surgery, Pancreatic-Biliary Center, The First Affiliated Hospital of Dalian Medical University, Dalian 116011, Liaoning Province, China

Jia-Lin Qu, Cai-Ming Xu, Hai-Long Chen, Dong Shang, Gui-Xin Zhang, Institute (College) of Integrative Medicine, Dalian Medical University, Dalian 116044, Liaoning Province, China

Corresponding author: Gui-Xin Zhang, PhD, Professor, Director, Department of General Surgery, Pancreatic-Biliary Center, The First Affiliated Hospital of Dalian Medical University, No. 222 Zhongshan Road, Dalian 116011, Liaoning Province, China. zgx0109@126.com

Abstract

Given the breakthroughs in key technologies, such as image recognition, deep learning and neural networks, artificial intelligence (AI) continues to be increasingly developed, leading to closer and deeper integration with an increasingly data-, knowledge- and brain labor-intensive medical industry. As society continues to advance and individuals become more aware of their health needs, the problems associated with the aging of the population are receiving increasing attention, and there is an urgent demand for improving medical technology, prolonging human life and enhancing health. Digestive system diseases are the most common clinical diseases and are characterized by complex clinical manifestations and a general lack of obvious symptoms in the early stage. Such diseases are very difficult to diagnose and treat. In recent years, the incidence of diseases of the digestive system has increased. As AI applications in the field of health care continue to be developed, AI has begun playing an important role in the diagnosis and treatment of diseases of the digestive system. In this paper, the application of AI in assisted diagnosis and the application and prospects of AI in malignant and benign digestive system diseases are reviewed.

Key Words: Artificial intelligence; Digestive disease; Convolutional neural network; Deep learning; Review

Core Tip: With the continuous development of artificial intelligence, its integration in the field of medical and health care has received increasing attention, allowing the development and application of medical expert systems and artificial neural networks in the medical field. The development of artificial intelligence has resulted in not only more accurate diagnoses of digestive system diseases but also new treatments. Further research on the progress of artificial intelligence in digestive system diseases is needed to better serve patients.

Citation: Chen HY, Ge P, Liu JY, Qu JL, Bao F, Xu CM, Chen HL, Shang D, Zhang GX. Artificial intelligence: Emerging player in the diagnosis and treatment of digestive disease. *World J Gastroenterol* 2022; 28(20): 2152-2162

URL: <https://www.wjgnet.com/1007-9327/full/v28/i20/2152.htm>

DOI: <https://dx.doi.org/10.3748/wjg.v28.i20.2152>

INTRODUCTION

Artificial intelligence (AI) is a branch of computer science[1] inspired by human intelligence that operates in a different way. AI can be considered a set of computing techniques that allow machines to sense, learn, reason, act, *etc.* AI was first used at the Dartmouth AI Conference in the summer of 1956, which is considered the official birth of AI. In the 1990s, as technology continued to improve, hardware became more affordable, performance became more reliable, computing power, storage capacity and the ability to process data were greatly improved, and AI returned to life. In recent years, the application of AI in the medical field has reached an unprecedented height and scale. To date, great progress has been achieved in the use of AI in medicine and health, including speech recognition, medical imaging, wearable devices, risk management, pathology, *etc.*[2].

The digestive system contains the largest number of organs in the human body and can be divided into the digestive tract and digestive glands. The digestive tract includes the oral cavity, pharynx, esophagus, stomach, duodenum, small intestine, large intestine, colon, *etc.* The digestive glands comprise the salivary glands, liver, pancreas, *etc.* The digestive system digests food, takes up nutrients and eliminates waste. The coordination of gastrointestinal physiological activities depends on the completion of the normal physiological function of the digestive system. Digestive system diseases, which are the most common clinical diseases, have complicated clinical manifestations, are interrelated with each other, and form a hot spot in the medical field[3]. The incidence of digestive system diseases is high, and often, there are no obvious symptoms in the early stage. Consequently, most digestive diseases are first noted in the middle and late stages; at this point, the prognosis is poor. As AI technology has continued to be developed, its strong computing power and learning ability have been gradually applied to solve complex medical problems. In the field of digestive diseases, such as gastric, liver, and pancreatic cancer and ulcerative colitis, AI can help improve the accuracy and sensitivity of the diagnosis and provide treatment options (Figure 1). AI not only improves the diagnostic accuracy of the disease but also provides a plan for clinical treatment.

In this review, we discuss AI and related technologies, their applications in digestive diseases and their future developments. We used PubMed and Google to search for relevant articles by using the keywords “digestive system diseases”, “artificial intelligence”, “machine learning”, “deep learning”, “computer-aided diagnosis”, “convolutional neural network”, and “endoscopy and endoscope images” for this review.

AI AUXILIARY DIAGNOSIS

In China, the development of AI has received considerable attention, particularly in the application of AI in the medical field. The development of AI has laid a solid foundation for precision medicine. In 2017, the China State Council announced that AI application should be promoted in the health care system. Subsequently, hundreds of new companies dedicated to the application of medical AI have emerged in China, promoting the development of AI in the medical field[4]. AI effectively improves the uneven allocation of medical resources, reduces medical costs and enhances medical efficiency. AI algorithms improve the ease of medical work and lead to not only technological innovations but also a transformation of the medical service mode. AI is applied in all fields of medicine and health, especially in the auxiliary diagnosis of diseases, and includes the following three aspects: intelligent guidance, electronic health records and risk monitoring of diagnosis and treatment.

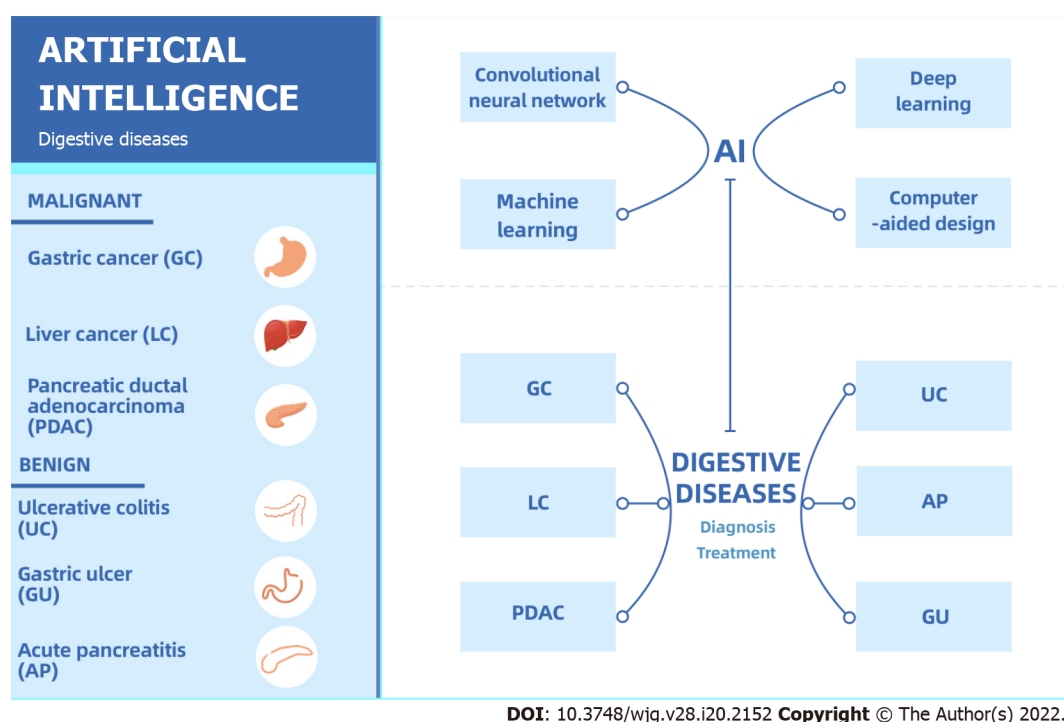


Figure 1 Artificial intelligence and digestive diseases. AI: Artificial intelligence; GC: Gastric cancer; LC: Liver cancer; PDAC: Pancreatic ductal adenocarcinoma; UC: Ulcerative colitis; AP: Acute pancreatitis; GU: Gastric ulcer.

Intelligent guidance

Outpatient triage has gradually transitioned from a traditional manual system to an internet- and intelligence-based system. Most admitted patients lack an understanding of their disease and the hospital. To improve the efficiency and experience of the patients, intelligent guidance systems have been developed. Patients enter the Mini Program through screens on official hospital accounts to describe symptoms or diseases, and guidance assistants intelligently follow up and guide the patients to provide symptoms to accurately match departments, recommend doctors with the most consistent professional direction, and perform online guidance registration in one step. The research and development leading to intelligent guidance systems has led to a reduction in not only the workload of outpatient staff but also the human resource needs and costs of hospitals. These systems can guide patients to seek medical treatment quickly and accurately, improve the accuracy of patient registration and the efficiency of the physician response, increase efficiency at all steps of the patient stay, and effectively provide accurate medical treatment (Figure 2).

Electronic health record

Traditional health records are typically kept on paper, which tend to be scattered in hospital archives, limiting their value. The widespread use of the internet has facilitated the creation of electronic health records (EHRs), which are currently widely used worldwide[5]. EHRs can improve management processes, overcome problems with paper documentation, and ensure the quality of treatment. Both theoretically and practically, EHRs have guiding and economic value, while their applicative value continues to improve. In addition, EHRs can improve clinical decision-making, collaboration between health care teams, and medical efficiency.

Risk monitoring of diagnosis and treatment

Diagnostic risk monitoring systems can improve the diagnostic accuracy and greatly reduce the risk of misdiagnosis, and in this regard, AI has significant advantages over clinical experience. Compared with the United States, domestic equipment is used much more frequently under the same resource allocation[6]. This is the main point of medical care in China. Additionally, the large associated workload and high repeatability result in a cumbersome manual analysis and diagnosis. An accurate diagnosis rate is important for ensuring that radiologists can provide high-quality care to patients. A report in 1999 showed that 98000 people die of misdiagnosis each year, and diagnostic errors by radiologists are a key contributor[7]. Under a heavy workload, the diagnosis results can only be judged and analyzed by subjective individual experience, leading to high misdiagnosis and missed diagnosis rates. The large market demand for pathologists and diagnostic efficiency have also led to new challenges in the medical service industry. However, digestive system diseases increasingly depend on auxiliary diagnoses based on medical images while continuing to demonstrate a yearly increase in

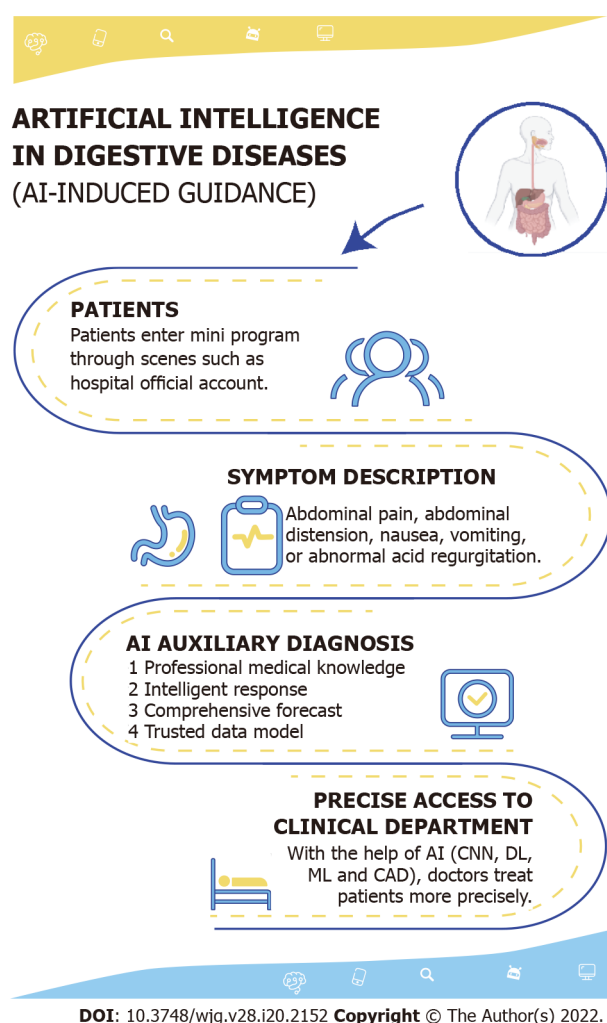


Figure 2 Artificial intelligence and Intelligent guidance. CNN: Convolutional neural network; DL: Deep learning; ML: machine learning; CAD: Computer-aided design.

incidence.

The emergence of AI has led to its gradual use in digestive diseases. Machine learning (ML) is a branch of AI that aims to predict results by analyzing existing data and performing calculations based on an understanding of these data. Deep learning (DL) is a relatively new branch of ML that imitates learning through machine algorithms and provides a set of possible and reasonable solutions[8,9]. In esophageal cancer, van der Sommen *et al*[10] developed an automatic algorithm to distinguish early neoplastic lesions. Huang *et al*[11] used 84 images from 30 patients to train an AI-based neural network model to predict *Helicobacter pylori* infection. DL can be used to share more comprehensive medical diagnosis and treatment information with doctors with lightweight methods. At a higher level, we can comprehensively manage and guide the overall diagnosis and treatment level of the physician team to build a more scientific, accurate and friendly diagnosis and treatment risk monitoring system.

MALIGNANT DIGESTIVE DISEASES

The digestive system is a common site for malignant tumors, particularly gastric cancer, liver cancer, colorectal cancer and pancreatic cancer. Given the changes in lifestyle, diet and disease spectrum of the population, the incidence of malignant tumors of the digestive system continues to rise[12]. The early diagnosis of malignant tumors is critical for treatment, but patients with malignant tumors often have no obvious symptoms at the early stage, leading to difficulties in early diagnosis. This section summarizes the application of AI in the following three types of malignant tumors with high morbidity and mortality: gastric, liver and pancreatic cancer. The latest clinical studies concerning AI, gastric cancer, liver cancer, and pancreatic ductal adenocarcinoma are summarized in Table 1.

Table 1 Recent researches on artificial intelligence in malignant digestive system diseases

Ref.	Study design	Study population	Year	Disease	Country/Region	Number of cases	Methods	Results
Tang <i>et al</i> [48]	Retrospective	Hospital	2020	GC	China	45240 Images	DCNN	Accuracy: 85.1%-91.2%; Sensitivity: 85.9%-95.5%; Specificity: 81.7%-90.3%; AUC: 0.887-0.940
Zhang <i>et al</i> [49]	Retrospective	Hospital	2020	GC	China	21,217 Images	CNN	Accuracy: 78.7%
Nagao <i>et al</i> [50]	Retrospective	Hospital	2020	GC	Japan	16557 images	CNN	Accuracy: WLI (94.5%); Accuracy: NBI (94.3%); Accuracy: Indigo (95.5%)
Song <i>et al</i> [51]	Retrospective	Hospital	2020	GC	China	3212 Images	DL	Accuracy: 0.873; Sensitivity: 0.996; Specificity: 0.843; AUC: 0.986
Ma <i>et al</i> [52]	Retrospective	Hospital	2020	GC	China	763 Images	CNN	Accuracy: 98.4%; Specificity: 98.9%; Sensitivity: 98.0%
Zhen <i>et al</i> [17]	Retrospective	Hospital	2020	LC	China	31608 Images	CNN	AUC: 0.946
Giordano <i>et al</i> [53]	Retrospective	Hospital	2020	LC	Italy	167 Cases	SVM, RF	Accuracy: Exceeded 94%
Jeong <i>et al</i> [54]	Retrospective	Cancer Institute	2020	LC	China	1421 Cases	DL	AUC: 0.84
Appelbaum <i>et al</i> [31]	Retrospective	Hospital	2020	PDAC	America	594 Cases	LR	AUC: 0.71
Marya <i>et al</i> [44]	Retrospective	Hospital	2020	PDAC	America	1174461 EUS Images	EUS-CNN	Sensitivity: 99%; Specificity: 98%
Tonozuka <i>et al</i> [55]	Retrospective	Hospital	2020	PDAC	Japan	920 Cases	EUS-CAD	AUC: 0.94

GC: Gastric cancer; LC: Liver cancer; PDAC: Pancreatic ductal adenocarcinoma; DCNN: Deep convolutional neural network; CNN: Convolutional neural network; DL: Deep learning; SVM: Support vector machine; RF: Random forest; LR: Logistic regression; EUS-CNN: Endoscopic ultrasound convolutional neural network; EUS-CAD: Computer-assisted diagnosis system using deep learning analysis of EUS images; AUC: area under the curve; WLI: White-light imaging; NBI: Nonmagnifying narrow-band imaging.

AI and gastric cancer

Gastric cancer (GC) is the fifth most common cancer and ranks third in cancer mortality worldwide, with more than 1 million new cases and 780000 deaths each year[13]. The stage at which GC is diagnosed can greatly affect the prognosis, with a poor prognosis typical in the late stage and a 5-year survival rate of early GC (EGC) exceeding 90%[14]. There are two difficulties in the early diagnosis of GC. First, EGC is difficult to detect, often presenting with slight reddish bulges or depressions under endoscopy that are not easily distinguished from inflammatory lesions. The second difficulty lies in judging the depth of the invasion of GC. In general, intramucosal GC or GC invading the superficial submucosal layer should be resected endoscopically, while GC invading the deep submucosal layer should be resected with open surgery; otherwise, there could be a risk of lymph node and distant metastasis. However, it is difficult to distinguish among these three forms of GC. The rapid development of DL and ML has led to great progress in AI, whose image recognition has transcended that of humans. By reviewing the published literature, this section discusses the diagnosis, treatment and prognosis of GC with AI.

Hirasawa *et al*[15] constructed a diagnostic system based on a convolutional neural network (CNN). The authors used 13584 endoscopic images to train the web-based learning model and 2296 GC images from 69 patients to evaluate its performance. The model took 47 s to analyze 2296 images and correctly diagnosed 77 GC lesions with a total sensitivity of 92%. This web-based learning model for the detection of EGC processes a large number of stored endoscopic images with clinical-related diagnostic capabilities in a very short time and may play a role in real-time gastroscopy[15].

Kubota *et al*[16] used a back propagation neural network algorithm to analyze the depth of gastric wall infiltration in endoscopic images of 344 GC patients and developed a computer-aided design (CAD) system. The cross-validation results revealed that the diagnostic accuracy of T1, T2, T3 and T4 GC was 77%, 49%, 51% and 55%, respectively. The accuracy in detecting intramucosal carcinoma (T1a) and submucosal invasive carcinoma (T1b) is 69%[16]. This study may be used to screen for EGC in the near future.

AI and liver cancer

Liver cancer (LC) is the second leading cause of death worldwide, and its incidence continues to increase[17]. In recent years, AI has been used in various aspects of LC diagnosis and treatment, especially in the field of imaging. However, individual differences in liver morphology and the internal anatomy and the highly heterogeneous molecular and pathological features of LC lead to great challenges in the implementation of AI, ML and DL for the diagnosis and treatment of this disease[18].

The following two modes of AI application are commonly used in the diagnosis of LC: DL and radiomics. Imaging plays a key role in the identification and diagnosis of hepatobiliary diseases and the establishment of surgical treatment plans. Radiologists and surgeons demarcate organs and diagnose diseases based on their experience and judgment, which can be subjective, time consuming and unreproducible; AI can address these limitations. DL is mainly used for the diagnosis of LC *via* traditional machine learning (TML) and CNNs. In TML, a well-developed anatomical model must be established in advance and manually corrected in the later stages[19], while the application of CNNs allows images to be directly used in the learning process, allowing the extraction and utilization of all information contained in the image for DL[20]. Shaw Hospital of Zhejiang University developed a DL system for liver tumor diagnosis through a CNN. In addition to learning more than 30000 magnetic resonance (MR) images, the system incorporates patient clinical data (medical records, examination results, etc.) and demonstrates excellent diagnostic performance with a coincidence rate with a final pathological result of 92%[17].

The application of AI in the treatment of LC has led to new opportunities and challenges, promoting the standardization and intelligence of LC management. Hu *et al*[21] used 3D visualization to evaluate the spatial relationship between tumors and surrounding blood vessels before hepatectomy, which serves as a suitable guide for surgical resection. In the treatment of LC by radiofrequency ablation, fusion imaging can integrate enhanced computed tomography (CT)/MR images with real-time ultrasound imaging by electromagnetic tracking to accurately locate the target lesions[22-24]. AI has been applied to all aspects of LC treatment and auxiliary diagnosis, but further prospective research is needed.

AI and pancreatic ductal adenocarcinoma

Pancreatic ductal adenocarcinoma (PDAC) is a rapidly progressive and highly malignant tumor of the digestive tract[25]. Although many methods have been developed for the diagnosis and treatment of PDAC in recent years, the effective rate of treatment and prognosis remain poor (the 5-year survival rate is only 9%[26]). The early detection and accurate treatment of PDAC are important directions requiring urgent solutions.

Recently, rapid developments have been achieved in the AI-based screening and diagnosis of PDAC, leading to acceptable effects. Ansari *et al*[27] applied artificial neural networks (ANNs) to a long-term survival prediction of patients after radical surgery for PDAC for the first time and achieved a consistency index of 0.79, indicating that their ANN could predict the survival rate of PDAC patients after radical surgery. Fine needle aspiration (FNA) biopsy is an elaborate approach used to diagnose solid masses of the pancreas. Due to the small number of cases, its development is limited. Momeni-Boroujeni *et al*[28] used a multilayer-perceptron neural network (MNN) to evaluate 277 cell mass images from 75 pancreatic FNA patients and achieved an accuracy of 100% in the classification of benign and malignant tumors. In particular, the sensitivity and specificity of MNN in identifying atypical cases were 80% and 75%, respectively. Intraductal papillary mucinous neoplasm (IPMN), a papillary mucinous tumor with many subtypes, has particular malignant potential. Endoscopic ultrasonography (EUS) can reveal the structure of the pancreas and the dilation of the pancreatic duct and can be used to evaluate the degree of malignancy of IPMN. Indeed, Kuwahara *et al*[29] used AI to build a system to perform this function. The authors uploaded 3970 EUS images of 50 patients to the system for DL analysis. The endpoint of their system was the accuracy in diagnosing the malignancy degree of IPMNs by AI. The results showed that the AI system had significantly better value in diagnosing malignant IPMNs than benign IPMNs, with an area under the receiver operating characteristic curve of 0.91 in diagnosing malignant IPMNs. In addition, a three-dimensional depth supervised segmentation network has been developed to classify CT images from PDAC patients and control groups. Chu *et al*[30] standardized the number of cases, the sizes of the segmented images, and the selection of organs and then segmented the boundaries of the abdominal organs and pancreatic tumors in 575 control subjects and 750 patients with PDAC. The results showed that the sensitivity and specificity of the algorithm in detecting PDAC in patients were 94.1% and 98.5%, respectively. The early diagnosis of PDAC is a problem that many physicians find difficult. Appelbaum *et al*[31] developed a risk model for the prediction of PDAC based on patient EHRs that could identify high-risk groups one year in advance,

suggesting that their risk scores could also be used as an initial filter for PDAC.

BENIGN DIGESTIVE DISEASES

In addition to gastric cancer, liver cancer and other malignant tumors, other digestive system diseases include ulcerative colitis, pancreatitis, gastric ulcer, gastritis, intestinal polyp and other benign digestive system diseases. We summarize the application of AI for the benign digestive system diseases discussed below. The latest applications of AI in ulcerative colitis, severe acute pancreatitis, gastric ulcers, gastritis and intestinal polyps are summarized in [Table 2](#).

AI and ulcerative colitis

Ulcerative colitis (UC) is a common chronic intestinal disease; however, there is no single gold standard for the diagnosis of this disease. Combining clinical, laboratory, imaging, endoscopic and histopathological findings, the diagnosis is made by excluding infectious and other noninfectious forms of colitis [32]. Endoscopy is essential, but the accuracy and precision of the diagnosis are limited by doctors' subjectivity. Yao *et al* [33] established a fully automatic endoscopic disease grading video analysis system through AI. These authors used a CNN to train models to predict the amount of information in still images and, thus, determine the severity of the disease. Then, the authors examined 51 and 264 videos from developed high-resolution and multicenter clinical trial test sets, respectively. The results showed that the static image information classification system had good performance, with a sensitivity of 0.902 and specificity of 0.870. For the high-resolution videos, the fully automated methods correctly predicted the Mayo endoscopic score (MES) in 78%. The automated MES grading of the clinical trial videos (often low resolution) correctly distinguished remitted *vs* active disease in 83.7%. To analyze endoscopic images of UC more accurately, Takenaka *et al* [34] developed a deep neural network system and tested 40758 colonoscopy images and 6885 biopsy results from 2012 UC patients. The results identified endoscopic remission with 90.1% accuracy and histologic remission with 92.9% accuracy. In addition, Maeda *et al* [35] developed a CAD system to predict persistent histologic inflammation using endocytoscopy and evaluated its accuracy using 12900 endocytoscopy images. The results showed that the CAD system provided a diagnostic sensitivity, specificity, and accuracy of 74%, 97% and 91%, respectively. In recent years, great progress has been achieved in the treatment of UC, but surgery remains important [36]. These results show that AI has great potential in the diagnosis and treatment of UC.

AI and pancreatitis

Acute pancreatitis (AP) is a common clinical acute abdomen disease with a complex and variable presentation. Severe AP (SAP) is often life threatening, with multiple organ dysfunction induced by SAP being a particularly difficult clinical problem [37]. Qiu *et al* [38] developed three ML algorithms to predict the risk of organ failure in moderate SAP (MSAP) and SAP. These authors inputted 16 parameters from 263 patients with MSAP and SAP into a support vector machine (SVM), logical regression analysis (LRA) and ANN models. The results showed that the SVM, LRA and ANN models could effectively predict the risk of multiorgan failure in MSAP and SAP. Respiratory failure is the main cause of early death in SAP. The early prediction of acute lung injury (ALI) is beneficial for reducing mortality from SAP. The ANN model established by Fei *et al* [39] can effectively predict the occurrence of ALI induced by SAP, with the accuracy of predicting severe acute respiratory distress syndrome reaching 82.8%. Abdominal infection is an important risk factor for organ failure induced by SAP. Compared with logistic regression analyses, the ANN model developed by Qiu *et al* [40] can more accurately predict abdominal infection in MSAP and SAP, with a sensitivity and specificity of 80.99% and 89.44%, respectively. Fei *et al* [41] constructed and verified an ANN model based on clinical and laboratory data from 72 patients with AP. Notably, the sensitivity, specificity, positive predictive value and negative predictive value of the ANN model for portosplenomesenteric venous thrombosis (PSMVT) were 80%, 85.7%, 77.6% and 90.7%, respectively. Thus, this model provides a good reference for the clinical prediction of the occurrence of PSMVT. The recurrence rate after the first attack of AP is approximately 22%, but few indicators can predict this recurrence. Chen *et al* [42] developed a quantitative radiology model based on contrast-enhanced CT. The results of the verification analysis showed that the model can predict the recurrence of AP well in the main and verification populations, with accuracies of 87.1% and 89.0%, respectively. This finding suggests that their model may be a good quantitative method for the prediction of recurrence in patients with AP. Chronic pancreatitis (CP), which is another common clinical digestive system disease, is an important factor in inducing pancreatic cancer. Although traditional pancreaticoduodenectomy, distal pancreatectomy, and the Frey and Beger procedures have achieved considerable success in relieving CP pain, the approaches are often accompanied by serious complications. Therefore, minimally invasive surgery and robot platforms are gradually being applied in the surgical treatment of CP. A retrospective study based on 812 cases of robotic pancreatectomy and reconstruction showed that the robotic platform is safe and feasible in performing complex pancreatectomy to alleviate the sequelae of CP [43]. Autoimmune pancreatitis (AIP) is a rare and special type of chronic pancreatitis, and its diagnosis is clinically challenging. Marya *et al*

Table 2 Recent researches on artificial intelligence in benign digestive system diseases

Ref.	Study design	Study population	Year	Disease	Country/Region	Number of cases	Methods	Results
Maeda <i>et al</i> [35]	Retrospective	Hospital	2019	UC	Japan	12900 Images	CAD	Sensitivity: 74%; Specificity: 97%; Accuracy: 91%
Popa <i>et al</i> [56]	Retrospective	Hospital	2020	UC	Romania	55 Cases	ML	Accuracy: 90%; AUC: 0.92
Tong <i>et al</i> [57]	Retrospective	Hospital	2020	UC	China	6399 Cases	RF, CNN	Sensitivity: RF (0.89); Sensitivity: CNN (0.90)
Qiu <i>et al</i> [38]	Retrospective	Hospital	2019	SAP	China	263 Cases	ANN	Sensitivity: 80.99%; Specificity: 89.44%
Chen <i>et al</i> [42]	Retrospective	Hospital	2019	SAP	China	389 Cases	LR	Accuracy: 87.1%
Namikawa <i>et al</i> [45]	Retrospective	Hospital	2020	Gastric ulcer	Japan	720 Images	A-CNN	Sensitivity: 93.3%; Specificity: 99.0%; PPV: 99.1%
Steinbuss <i>et al</i> [46]	Retrospective	Hospital	2020	Gastritis	Germany	1230 Images	CNN	Accuracy: 84%; Sensitivity: 100%; Specificity: 93%
Ozawa <i>et al</i> [47]	Retrospective	Hospital	2020	Colorectal polyps	Japan	16418 Images	CNN	Sensitivity: 92%; PPV: 86%

UC: Ulcerative colitis; SAP: Severe acute pancreatitis; CAD: Computer-aided diagnosis; ML: Machine learning; RF: Random forest; CNN: Convolutional neural network; ANN: Artificial neural networks; LR: Logistic regression; A-CNN: Advanced convolutional neural network; AUC: Area under the curve; PPV: Positive predictive value.

[44] developed and validated a CNN model based on a database containing 174461 EUS images and videos from 583 patients. After training, the model could accurately distinguish AIP from PDAC and other benign pancreatic diseases with a sensitivity and specificity of 90% and 85%, respectively.

AI and other diseases

AI has been used in numerous applications for other diseases, such as gastric ulcers, gastritis and colorectal polyps. Namikawa *et al*[45] developed an advanced CNN (A-CNN) based on the original convolutional neural network and evaluated its applicability in the classification of gastric ulcers. These authors used 720 images from 120 patients with gastric ulcers to evaluate the diagnostic performance of the A-CNN. The results showed that the sensitivity, specificity, and positive predictive value of the A-CNN in classifying gastric ulcers were 93.3%, 99.0%, and 99.1%, respectively. There are several subtypes of gastritis, including autoimmune, bacterial, and chemical. Steinbuss *et al*[46] evaluated the ability of a CNN to classify the common gastritis subtypes using a small data set of 1230 gastric antrum and corpus biopsy images. The results showed that the overall accuracy in the test set was 84%, and the sensitivity and specificity for bacterial gastritis were 100% and 93%, respectively. Ozawa *et al*[47] constructed a deep CNN architecture and trained the CNN using 16418 images from 4752 colorectal polyps and 4013 normal colorectal images. Then, the performance of the trained CNN was verified with 7077 additional colonoscopy images. The results showed that the sensitivity of the CNN was 92%, and the positive predictive value was 86%, proving that it has excellent potential as a colonoscopy CP-diagnosis support system based on AI.

CONCLUSION

With the steady development of AI and its heavy integration in the medical industry, AI has received increasing attention in the fields of medicine and health. Digestive system AI technology differs from other AI technologies because of the nonstandard nature of most digestive endoscopic images and the large number of influencing factors, resulting in difficulty in developing such technology. Currently, AI plays an important role in digestive system diseases, particularly in its gradual application in diagnosis and treatment in the clinic. AI has broad prospects in the field of medicine and health, but the cooperation of medical workers and computer experts is needed to develop more intelligent applications and higher-quality services for patients. In summary, as an emerging player, AI will continue to play an increasingly important role in future development. The close combination of AI and medicine can address problems, such as the insufficient supply and uneven distribution of medical resources and

low degree of medical efficiency. More in-depth research should be performed to investigate the application of AI in digestive system diseases from various perspectives to obtain additional diagnosis and treatment measures, promote diagnosis, optimize treatment, improve patient prognosis, and gradually achieve intelligent and accurate medical treatment.

FOOTNOTES

Author contributions: Chen HY, Ge P, Liu JY contributed equally to the manuscript; Chen HY conceived this review and drafted the manuscript; Ge P, Liu JY, Bao F and Qu JL are responsible for the figure drawing and literature collation; Xu CM, Chen HL and Shang D edited and finalized the manuscript for submission; Zhang GX reviewed and approved the submitted manuscript.

Supported by Key Discipline of Liaoning Traditional Chinese Medicine Clinical Ability Promote Construction Project, No. LNZYXZY201903; and Development Guidance Plan Projects in Liaoning Province, No. 2019JH-8/10300028.

Conflict-of-interest statement: There is no conflict of interest associated with any of the senior author or other coauthors contributed their efforts in this manuscript.

Open-Access: This article is an open-access article that was selected by an in-house editor and fully peer-reviewed by external reviewers. It is distributed in accordance with the Creative Commons Attribution NonCommercial (CC BY-NC 4.0) license, which permits others to distribute, remix, adapt, build upon this work non-commercially, and license their derivative works on different terms, provided the original work is properly cited and the use is non-commercial. See: <https://creativecommons.org/licenses/by-nc/4.0/>

Country/Territory of origin: China

ORCID number: Hai-Yang Chen 0000-0002-6705-2249; Peng Ge 0000-0002-2647-2474; Jia-Yue Liu 0000-0001-9294-7493; Jia-Lin Qu 0000-0003-2020-4783; Fang Bao 0000-0002-1609-2953; Cai-Ming Xu 0000-0001-7794-2301; Hai-Long Chen 0000-0001-5247-7343; Dong Shang 0000-0002-4300-359X; Gui-Xin Zhang 0000-0002-6171-394X.

S-Editor: Wang JL

L-Editor: A

P-Editor: Wang JL

REFERENCES

- 1 Parasher G, Wong M, Rawat M. Evolving role of artificial intelligence in gastrointestinal endoscopy. *World J Gastroenterol* 2020; **26**: 7287-7298 [PMID: 33362384 DOI: 10.3748/wjg.v26.i46.7287]
- 2 Sensakovic WF, Mahesh M. Role of the Medical Physicist in the Health Care Artificial Intelligence Revolution. *J Am Coll Radiol* 2019; **16**: 393-394 [PMID: 30446397 DOI: 10.1016/j.jacr.2018.09.022]
- 3 Togashi K. Applications of artificial intelligence to endoscopy practice: The view from Japan Digestive Disease Week 2018. *Dig Endosc* 2019; **31**: 270-272 [PMID: 30681203 DOI: 10.1111/den.13354]
- 4 He J, Baxter SL, Xu J, Zhou X, Zhang K. The practical implementation of artificial intelligence technologies in medicine. *Nat Med* 2019; **25**: 30-36 [PMID: 30617336 DOI: 10.1038/s41591-018-0307-0]
- 5 Rudin RS, Friedberg MW, Shekelle P, Shah N, Bates DW. Getting Value From Electronic Health Records: Research Needed to Improve Practice. *Ann Intern Med* 2020; **172**: S130-S136 [PMID: 32479182 DOI: 10.7326/M19-0878]
- 6 Hershberger AG. Review of 'Delivering Health Care in America: A Systems Approach, 3rd edition'. 2005
- 7 Kohn LT, Corrigan JM, Donaldson MS; Institute of Medicine (US) Committee on Quality of Health Care in America. To err is human: building a safer health system. Washington: National Academies Press (US), 2000: 245-246 [PMID: 25077248 DOI: 10.17226/9728]
- 8 Schmidhuber J. Deep learning in neural networks: an overview. *Neural Netw* 2015; **61**: 85-117 [PMID: 25462637 DOI: 10.1016/j.neunet.2014.09.003]
- 9 Deo RC. Machine Learning in Medicine. *Circulation* 2015; **132**: 1920-1930 [PMID: 26572668 DOI: 10.1161/CIRCULATIONAHA.115.001593]
- 10 van der Sommen F, Zinger S, Curvers WL, Bisschops R, Pech O, Weusten BL, Bergman JJ, de With PH, Schoon EJ. Computer-aided detection of early neoplastic lesions in Barrett's esophagus. *Endoscopy* 2016; **48**: 617-624 [PMID: 27100718 DOI: 10.1055/s-0042-105284]
- 11 Huang CR, Sheu BS, Chung PC, Yang HB. Computerized diagnosis of Helicobacter pylori infection and associated gastric inflammation from endoscopic images by refined feature selection using a neural network. *Endoscopy* 2004; **36**: 601-608 [PMID: 15243882 DOI: 10.1055/s-2004-814519]
- 12 Bray F, Ferlay J, Soerjomataram I, Siegel RL, Torre LA, Jemal A. Global cancer statistics 2018: GLOBOCAN estimates of incidence and mortality worldwide for 36 cancers in 185 countries. *CA Cancer J Clin* 2018; **68**: 394-424 [PMID: 30207593 DOI: 10.3322/caac.21492]
- 13 Hirasawa T, Ikenoyama Y, Ishioka M, Namikawa K, Horiuchi Y, Nakashima H, Fujisaki J. Current status and future

- perspective of artificial intelligence applications in endoscopic diagnosis and management of gastric cancer. *Dig Endosc* 2021; **33**: 263-272 [PMID: [33159692](#) DOI: [10.1111/den.13890](#)]
- 14 **Sano T**, Coit DG, Kim HH, Roviello F, Kassab P, Wittekind C, Yamamoto Y, Ohashi Y. Proposal of a new stage grouping of gastric cancer for TNM classification: International Gastric Cancer Association staging project. *Gastric Cancer* 2017; **20**: 217-225 [PMID: [26897166](#) DOI: [10.1007/s10120-016-0601-9](#)]
 - 15 **Hirasawa T**, Aoyama K, Tanimoto T, Ishihara S, Shichijo S, Ozawa T, Ohnishi T, Fujishiro M, Matsuo K, Fujisaki J, Tada T. Application of artificial intelligence using a convolutional neural network for detecting gastric cancer in endoscopic images. *Gastric Cancer* 2018; **21**: 653-660 [PMID: [29335825](#) DOI: [10.1007/s10120-018-0793-2](#)]
 - 16 **Kubota K**, Kuroda J, Yoshida M, Ohta K, Kitajima M. Medical image analysis: computer-aided diagnosis of gastric cancer invasion on endoscopic images. *Surg Endosc* 2012; **26**: 1485-1489 [PMID: [22083334](#) DOI: [10.1007/s00464-011-2036-z](#)]
 - 17 **Zhen SH**, Cheng M, Tao YB, Wang YF, Juengpanich S, Jiang ZY, Jiang YK, Yan YY, Lu W, Lue JM, Qian JH, Wu ZY, Sun JH, Lin H, Cai XJ. Deep Learning for Accurate Diagnosis of Liver Tumor Based on Magnetic Resonance Imaging and Clinical Data. *Front Oncol* 2020; **10**: 680 [PMID: [32547939](#) DOI: [10.3389/fonc.2020.00680](#)]
 - 18 **Calderaro J**, Ziol M, Paradis V, Zucman-Rossi J. Molecular and histological correlations in liver cancer. *J Hepatol* 2019; **71**: 616-630 [PMID: [31195064](#) DOI: [10.1016/j.jhep.2019.06.001](#)]
 - 19 **Wang CJ**, Hamm CA, Savic LJ, Ferrante M, Schobert I, Schlachter T, Lin M, Weinreb JC, Duncan JS, Chapiro J, Letzen B. Deep learning for liver tumor diagnosis part II: convolutional neural network interpretation using radiologic imaging features. *Eur Radiol* 2019; **29**: 3348-3357 [PMID: [31093705](#) DOI: [10.1007/s00330-019-06214-8](#)]
 - 20 **Hamm CA**, Wang CJ, Savic LJ, Ferrante M, Schobert I, Schlachter T, Lin M, Duncan JS, Weinreb JC, Chapiro J, Letzen B. Deep learning for liver tumor diagnosis part I: development of a convolutional neural network classifier for multi-phasic MRI. *Eur Radiol* 2019; **29**: 3338-3347 [PMID: [31016442](#) DOI: [10.1007/s00330-019-06205-9](#)]
 - 21 **Hu M**, Hu H, Cai W, Mo Z, Xiang N, Yang J, Fang C. The Safety and Feasibility of Three-Dimensional Visualization Technology Assisted Right Posterior Lobe Allied with Part of V and VIII Sectionectomy for Right Hepatic Malignancy Therapy. *J Laparoendosc Adv Surg Tech A* 2018; **28**: 586-594 [PMID: [29172950](#) DOI: [10.1089/lap.2017.0479](#)]
 - 22 **Citone M**, Fanelli F, Falcone G, Mondaini F, Cozzi D, Miele V. A closer look to the new frontier of artificial intelligence in the percutaneous treatment of primary lesions of the liver. *Med Oncol* 2020; **37**: 55 [PMID: [32424627](#) DOI: [10.1007/s12032-020-01380-y](#)]
 - 23 **Ahn SJ**, Lee JM, Lee DH, Lee SM, Yoon JH, Kim YJ, Lee JH, Yu SJ, Han JK. Real-time US-CT/MR fusion imaging for percutaneous radiofrequency ablation of hepatocellular carcinoma. *J Hepatol* 2017; **66**: 347-354 [PMID: [27650284](#) DOI: [10.1016/j.jhep.2016.09.003](#)]
 - 24 **Huang Q**, Zeng Q, Long Y, Tan L, Zheng R, Xu E, Li K. Fusion imaging techniques and contrast-enhanced ultrasound for thermal ablation of hepatocellular carcinoma - A prospective randomized controlled trial. *Int J Hyperthermia* 2019; **36**: 1207-1215 [PMID: [31813295](#) DOI: [10.1080/02656736.2019.1687945](#)]
 - 25 **Iovanna J**. Implementing biological markers as a tool to guide clinical care of patients with pancreatic cancer. *Transl Oncol* 2021; **14**: 100965 [PMID: [33248412](#) DOI: [10.1016/j.tranon.2020.100965](#)]
 - 26 **Siegel RL**, Miller KD, Jemal A. Cancer statistics, 2020. *CA Cancer J Clin* 2020; **70**: 7-30 [PMID: [31912902](#) DOI: [10.3322/caac.21590](#)]
 - 27 **Ansari D**, Nilsson J, Andersson R, Regnér S, Tingstedt B, Andersson B. Artificial neural networks predict survival from pancreatic cancer after radical surgery. *Am J Surg* 2013; **205**: 1-7 [PMID: [23245432](#) DOI: [10.1016/j.amjsurg.2012.05.032](#)]
 - 28 **Momeni-Boroujeni A**, Yousefi E, Somma J. Computer-assisted cytologic diagnosis in pancreatic FNA: An application of neural networks to image analysis. *Cancer Cytopathol* 2017; **125**: 926-933 [PMID: [28885766](#) DOI: [10.1002/cncy.21915](#)]
 - 29 **Kuwahara T**, Hara K, Mizuno N, Okuno N, Matsumoto S, Obata M, Kurita Y, Koda H, Toriyama K, Onishi S, Ishihara M, Tanaka T, Tajika M, Niwa Y. Usefulness of Deep Learning Analysis for the Diagnosis of Malignancy in Intraductal Papillary Mucinous Neoplasms of the Pancreas. *Clin Transl Gastroenterol* 2019; **10**: 1-8 [PMID: [31117111](#) DOI: [10.14309/ctg.0000000000000045](#)]
 - 30 **Chu LC**, Park S, Kawamoto S, Wang Y, Zhou Y, Shen W, Zhu Z, Xia Y, Xie L, Liu F, Yu Q, Fouladi DF, Shayesteh S, Zinreich E, Graves JS, Horton KM, Yuille AL, Hruban RH, Kinzler KW, Vogelstein B, Fishman EK. Application of Deep Learning to Pancreatic Cancer Detection: Lessons Learned From Our Initial Experience. *J Am Coll Radiol* 2019; **16**: 1338-1342 [PMID: [31492412](#) DOI: [10.1016/j.jacr.2019.05.034](#)]
 - 31 **Appelbaum L**, Cambronero JP, Stevens JP, Horng S, Pollick K, Silva G, Haneuse S, Piatkowski G, Benhaga N, Duey S, Stevenson MA, Mamon H, Kaplan ID, Rinard MC. Development and validation of a pancreatic cancer risk model for the general population using electronic health records: An observational study. *Eur J Cancer* 2021; **143**: 19-30 [PMID: [33278770](#) DOI: [10.1016/j.ejca.2020.10.019](#)]
 - 32 **Ooi CJ**, Fock KM, Makharia GK, Goh KL, Ling KL, Hilmi I, Lim WC, Kelvin T, Gibson PR, Gearry RB, Ouyang Q, Sollano J, Manatsathit S, Rerknimitr R, Wei SC, Leung WK, de Silva HJ, Leong RW; Asia Pacific Association of Gastroenterology Working Group on Inflammatory Bowel Disease. The Asia-Pacific consensus on ulcerative colitis. *J Gastroenterol Hepatol* 2010; **25**: 453-468 [PMID: [20370724](#) DOI: [10.1111/j.1440-1746.2010.06241.x](#)]
 - 33 **Yao H**, Najarian K, Gryak J, Bishu S, Rice MD, Waljee AK, Wilkins HJ, Stidham RW. Fully automated endoscopic disease activity assessment in ulcerative colitis. *Gastrointest Endosc* 2021; **93**: 728-736.e1 [PMID: [32810479](#) DOI: [10.1016/j.gie.2020.08.011](#)]
 - 34 **Takenaka K**, Ohtsuka K, Fujii T, Negi M, Suzuki K, Shimizu H, Oshima S, Akiyama S, Motobayashi M, Nagahori M, Saito E, Matsuoka K, Watanabe M. Development and Validation of a Deep Neural Network for Accurate Evaluation of Endoscopic Images From Patients With Ulcerative Colitis. *Gastroenterology* 2020; **158**: 2150-2157 [PMID: [32060000](#) DOI: [10.1053/j.gastro.2020.02.012](#)]
 - 35 **Maeda Y**, Kudo SE, Mori Y, Misawa M, Ogata N, Sasanuma S, Wakamura K, Oda M, Mori K, Ohtsuka K. Fully automated diagnostic system with artificial intelligence using endocytoscopy to identify the presence of histologic inflammation associated with ulcerative colitis (with video). *Gastrointest Endosc* 2019; **89**: 408-415 [PMID: [30268542](#) DOI: [10.1016/j.gie.2018.09.024](#)]
 - 36 **Crippa J**, Carvello M, Kotze PG, Spinelli A. Robotic Surgery in Inflammatory Bowel Disease. *Curr Drug Targets* 2021;

- 22: 112-116 [PMID: 33109059 DOI: 10.2174/1389450121999200820125918]
- 37 **Ge P**, Luo Y, Okoye CS, Chen H, Liu J, Zhang G, Xu C. Intestinal barrier damage, systemic inflammatory response syndrome, and acute lung injury: A troublesome trio for acute pancreatitis. *Biomed Pharmacother* 2020; **132**: 110770 [PMID: 33011613 DOI: 10.1016/j.biopha.2020.110770]
- 38 **Qiu Q**, Nian YJ, Guo Y, Tang L, Lu N, Wen LZ, Wang B, Chen DF, Liu KJ. Development and validation of three machine-learning models for predicting multiple organ failure in moderately severe and severe acute pancreatitis. *BMC Gastroenterol* 2019; **19**: 118 [PMID: 31272385 DOI: 10.1186/s12876-019-1016-y]
- 39 **Fei Y**, Gao K, Li WQ. Artificial neural network algorithm model as powerful tool to predict acute lung injury following to severe acute pancreatitis. *Pancreatol* 2018; **18**: 892-899 [PMID: 30268673 DOI: 10.1016/j.pan.2018.09.007]
- 40 **Qiu Q**, Nian YJ, Tang L, Guo Y, Wen LZ, Wang B, Chen DF, Liu KJ. Artificial neural networks accurately predict intra-abdominal infection in moderately severe and severe acute pancreatitis. *J Dig Dis* 2019; **20**: 486-494 [PMID: 31328389 DOI: 10.1111/1751-2980.12796]
- 41 **Fei Y**, Hu J, Li WQ, Wang W, Zong GQ. Artificial neural networks predict the incidence of portosplenomesenteric venous thrombosis in patients with acute pancreatitis. *J Thromb Haemost* 2017; **15**: 439-445 [PMID: 27960048 DOI: 10.1111/jth.13588]
- 42 **Chen Y**, Chen TW, Wu CQ, Lin Q, Hu R, Xie CL, Zuo HD, Wu JL, Mu QW, Fu QS, Yang GQ, Zhang XM. Radiomics model of contrast-enhanced computed tomography for predicting the recurrence of acute pancreatitis. *Eur Radiol* 2019; **29**: 4408-4417 [PMID: 30413966 DOI: 10.1007/s00330-018-5824-1]
- 43 **Hamad A**, Zenati MS, Nguyen TK, Hogg ME, Zeh HJ 3rd, Zureikat AH. Safety and feasibility of the robotic platform in the management of surgical sequelae of chronic pancreatitis. *Surg Endosc* 2018; **32**: 1056-1065 [PMID: 29273874 DOI: 10.1007/s00464-017-6010-2]
- 44 **Marya NB**, Powers PD, Chari ST, Gleeson FC, Leggett CL, Abu Dayyeh BK, Chandrasekhara V, Iyer PG, Majumder S, Pearson RK, Petersen BT, Rajan E, Sawas T, Storm AC, Vege SS, Chen S, Long Z, Hough DM, Mara K, Levy MJ. Utilisation of artificial intelligence for the development of an EUS-convolutional neural network model trained to enhance the diagnosis of autoimmune pancreatitis. *Gut* 2021; **70**: 1335-1344 [PMID: 33028668 DOI: 10.1136/gutjnl-2020-322821]
- 45 **Namikawa K**, Hirasawa T, Nakano K, Ikenoyama Y, Ishioka M, Shiroma S, Tokai Y, Yoshimizu S, Horiuchi Y, Ishiyama A, Yoshio T, Tsuchida T, Fujisaki J, Tada T. Artificial intelligence-based diagnostic system classifying gastric cancers and ulcers: comparison between the original and newly developed systems. *Endoscopy* 2020; **52**: 1077-1083 [PMID: 32503056 DOI: 10.1055/a-1194-8771]
- 46 **Steinbuss G**, Kriegsmann K, Kriegsmann M. Identification of Gastritis Subtypes by Convolutional Neuronal Networks on Histological Images of Antrum and Corpus Biopsies. *Int J Mol Sci* 2020; **21** [PMID: 32932860 DOI: 10.3390/ijms21186652]
- 47 **Ozawa T**, Ishihara S, Fujishiro M, Kumagai Y, Shichijo S, Tada T. Automated endoscopic detection and classification of colorectal polyps using convolutional neural networks. *Therap Adv Gastroenterol* 2020; **13**: 1756284820910659 [PMID: 32231710 DOI: 10.1177/1756284820910659]
- 48 **Tang D**, Wang L, Ling T, Lv Y, Ni M, Zhan Q, Fu Y, Zhuang D, Guo H, Dou X, Zhang W, Xu G, Zou X. Development and validation of a real-time artificial intelligence-assisted system for detecting early gastric cancer: A multicentre retrospective diagnostic study. *EBioMedicine* 2020; **62**: 103146 [PMID: 33254026 DOI: 10.1016/j.ebiom.2020.103146]
- 49 **Zhang L**, Zhang Y, Wang L, Wang J, Liu Y. Diagnosis of gastric lesions through a deep convolutional neural network. *Dig Endosc* 2021; **33**: 788-796 [PMID: 32961597 DOI: 10.1111/den.13844]
- 50 **Nagao S**, Tsuji Y, Sakaguchi Y, Takahashi Y, Minatsuki C, Niimi K, Yamashita H, Yamamichi N, Seto Y, Tada T, Koike K. Highly accurate artificial intelligence systems to predict the invasion depth of gastric cancer: efficacy of conventional white-light imaging, nonmagnifying narrow-band imaging, and indigo-carmin dye contrast imaging. *Gastrointest Endosc* 2020; **92**: 866-873.e1 [PMID: 32592776 DOI: 10.1016/j.gie.2020.06.047]
- 51 **Song Z**, Zou S, Zhou W, Huang Y, Shao L, Yuan J, Gou X, Jin W, Wang Z, Chen X, Ding X, Liu J, Yu C, Ku C, Liu C, Sun Z, Xu G, Wang Y, Zhang X, Wang D, Wang S, Xu W, Davis RC, Shi H. Clinically applicable histopathological diagnosis system for gastric cancer detection using deep learning. *Nat Commun* 2020; **11**: 4294 [PMID: 32855423 DOI: 10.1038/s41467-020-18147-8]
- 52 **Ma B**, Guo Y, Hu W, Yuan F, Zhu Z, Yu Y, Zou H. Artificial Intelligence-Based Multiclass Classification of Benign or Malignant Mucosal Lesions of the Stomach. *Front Pharmacol* 2020; **11**: 572372 [PMID: 33132910 DOI: 10.3389/fphar.2020.572372]
- 53 **Giordano S**, Takeda S, Donadon M, Saiki H, Brunelli L, Pastorelli R, Cimino M, Soldani C, Franceschini B, Di Tommaso L, Lleo A, Yoshimura K, Nakajima H, Torzilli G, Davoli E. Rapid automated diagnosis of primary hepatic tumour by mass spectrometry and artificial intelligence. *Liver Int* 2020; **40**: 3117-3124 [PMID: 32662575 DOI: 10.1111/liv.14604]
- 54 **Jeong S**, Ge Y, Chen J, Gao Q, Luo G, Zheng B, Sha M, Shen F, Cheng Q, Sui C, Liu J, Wang H, Xia Q, Chen L. Latent Risk Intrahepatic Cholangiocarcinoma Susceptible to Adjuvant Treatment After Resection: A Clinical Deep Learning Approach. *Front Oncol* 2020; **10**: 143 [PMID: 32140448 DOI: 10.3389/fonc.2020.00143]
- 55 **Tonozuka R**, Itoi T, Nagata N, Kojima H, Sofuni A, Tsuchiya T, Ishii K, Tanaka R, Nagakawa Y, Mukai S. Deep learning analysis for the detection of pancreatic cancer on endosonographic images: a pilot study. *J Hepatobiliary Pancreat Sci* 2021; **28**: 95-104 [PMID: 32910528 DOI: 10.1002/jhbp.825]
- 56 **Popa IV**, Burlacu A, Mihai C, Prelipcean CC. A Machine Learning Model Accurately Predicts Ulcerative Colitis Activity at One Year in Patients Treated with Anti-Tumour Necrosis Factor α Agents. *Medicina (Kaunas)* 2020; **56** [PMID: 33233514 DOI: 10.3390/medicina56110628]
- 57 **Tong Y**, Lu K, Yang Y, Li J, Lin Y, Wu D, Yang A, Li Y, Yu S, Qian J. Can natural language processing help differentiate inflammatory intestinal diseases in China? *BMC Med Inform Decis Mak* 2020; **20**: 248 [PMID: 32993636 DOI: 10.1186/s12911-020-01277-w]



Published by **Baishideng Publishing Group Inc**
7041 Koll Center Parkway, Suite 160, Pleasanton, CA 94566, USA

Telephone: +1-925-3991568

E-mail: bpgoffice@wjgnet.com

Help Desk: <https://www.f6publishing.com/helpdesk>

<https://www.wjgnet.com>

