

World Journal of *Clinical Cases*

World J Clin Cases 2022 September 6; 10(25): 8808-9179



Contents

Thrice Monthly Volume 10 Number 25 September 6, 2022

MINIREVIEWS

- 8808 Ear, nose, and throat manifestations of COVID-19 and its vaccines
Al-Ani RM
- 8816 Potential influences of religiosity and religious coping strategies on people with diabetes
Onyishi CN, Eseadi C, Ilechukwu LC, Okoro KN, Okolie CN, Egbule E, Asogwa E

ORIGINAL ARTICLE

Case Control Study

- 8827 Effectiveness of six-step complex decongestive therapy for treating upper limb lymphedema after breast cancer surgery
Zhang HZ, Zhong QL, Zhang HT, Luo QH, Tang HL, Zhang LJ

Retrospective Study

- 8837 Hospital admissions from alcohol-related acute pancreatitis during the COVID-19 pandemic: A single-centre study
Mak WK, Di Mauro D, Pearce E, Karran L, Myintmo A, Duckworth J, Orabi A, Lane R, Holloway S, Manzelli A, Mossadegh S
- 8844 Indocyanine green plasma clearance rate and 99mTc-galactosyl human serum albumin single-photon emission computed tomography evaluated preoperative remnant liver
Iwaki K, Kaihara S, Kita R, Kitamura K, Hashida H, Uryuhara K
- 8854 Arthroscopy with subscapularis upper one-third tenodesis for treatment of recurrent anterior shoulder instability independent of glenoid bone loss
An BJ, Wang FL, Wang YT, Zhao Z, Wang MX, Xing GY
- 8863 Evaluation of the prognostic nutritional index for the prognosis of Chinese patients with high/extremely high-risk prostate cancer after radical prostatectomy
Yang F, Pan M, Nie J, Xiao F, Zhang Y

Observational Study

- 8872 Chlorine poisoning caused by improper mixing of household disinfectants during the COVID-19 pandemic: Case series
Lin GD, Wu JY, Peng XB, Lu XX, Liu ZY, Pan ZG, Qiu ZW, Dong JG
- 8880 Mental health of the Slovak population during COVID-19 pandemic: A cross-sectional survey
Kralova M, Brazinova A, Sivcova V, Izakova L

Prospective Study

- 8893** Arthroscopic anatomical reconstruction of lateral collateral ligaments with ligament advanced reinforcement system artificial ligament for chronic ankle instability
Wang Y, Zhu JX

SYSTEMATIC REVIEWS

- 8906** How to select the quantitative magnetic resonance technique for subjects with fatty liver: A systematic review
Li YW, Jiao Y, Chen N, Gao Q, Chen YK, Zhang YF, Wen QP, Zhang ZM
- 8922** Lymphocytic choriomeningitis virus: An under-recognized congenital teratogen
Ferenc T, Vujica M, Mrzljak A, Vilbic-Cavlek T

CASE REPORT

- 8932** Alagille syndrome associated with total anomalous pulmonary venous connection and severe xanthomas: A case report
Zeng HS, Zhang ZH, Hu Y, Zheng GL, Wang J, Zhang JW, Guo YX
- 8939** Colo-colonic intussusception with post-polypectomy electrocoagulation syndrome: A case report
Moon JY, Lee MR, Yim SK, Ha GW
- 8945** Portal vein gas combined with pneumatosis intestinalis and emphysematous cystitis: A case report and literature review
Hu SF, Liu HB, Hao YY
- 8954** Quadricuspid aortic valve and right ventricular type of myocardial bridging in an asymptomatic middle-aged woman: A case report
Sopek Merkaš I, Lakušić N, Paar MH
- 8962** Treatment of gastric carcinoma with lymphoid stroma by immunotherapy: A case report
Cui YJ, Ren YY, Zhang HZ
- 8968** Gallstone associated celiac trunk thromboembolisms complicated with splenic infarction: A case report
Wu CY, Su CC, Huang HH, Wang YT, Wang CC
- 8974** Extracorporeal membrane oxygenation for lung cancer-related life-threatening hypoxia: A case report
Yoo SS, Lee SY, Choi SH
- 8980** Multi-disciplinary treatment of maxillofacial skeletal deformities by orthognathic surgery combined with periodontal phenotype modification: A case report
Liu JY, Li GF, Tang Y, Yan FH, Tan BC
- 8990** X-linked recessive Kallmann syndrome: A case report
Zhang P, Fu JY
- 8998** Delayed complications of intradural cement leakage after percutaneous vertebroplasty: A case report
Ma QH, Liu GP, Sun Q, Li JG

- 9004** Coexistent Kaposi sarcoma and post-transplant lymphoproliferative disorder in the same lymph nodes after pediatric liver transplantation: A case report
Zhang SH, Chen GY, Zhu ZJ, Wei L, Liu Y, Liu JY
- 9012** Misdiagnosis of pancreatic metastasis from renal cell carcinoma: A case report
Liang XK, Li LJ, He YM, Xu ZF
- 9020** Discoid medial meniscus of both knees: A case report
Zheng ZR, Ma H, Yang F, Yuan L, Wang GD, Zhao XW, Ma LF
- 9028** Simultaneous laparoscopic and arthroscopic excision of a huge juxta-articular ganglionic cyst compressing the sciatic nerve: A case report
Choi WK, Oh JS, Yoon SJ
- 9036** One-stage revision arthroplasty in a patient with ochronotic arthropathy accompanied by joint infection: A case report
Wang XC, Zhang XM, Cai WL, Li Z, Ma C, Liu YH, He QL, Yan TS, Cao XW
- 9044** Bladder paraganglioma after kidney transplantation: A case report
Wang L, Zhang YN, Chen GY
- 9050** Total spinal anesthesia caused by lidocaine during unilateral percutaneous vertebroplasty performed under local anesthesia: A case report
Wang YF, Bian ZY, Li XX, Hu YX, Jiang L
- 9057** Ruptured splenic artery aneurysms in pregnancy and usefulness of endovascular treatment in selective patients: A case report and review of literature
Lee SH, Yang S, Park I, Im YC, Kim GY
- 9064** Gastrointestinal metastasis secondary to invasive lobular carcinoma of the breast: A case report
Li LX, Zhang D, Ma F
- 9071** Post-bulbar duodenal ulcer with anterior perforation with kissing ulcer and duodenocaval fistula: A case report and review of literature
Alzerwi N
- 9078** Modified orthodontic treatment of substitution of canines by first premolars: A case report
Li FF, Li M, Li M, Yang X
- 9087** Renal cell carcinoma presented with a rare case of icteric Stauffer syndrome: A case report
Popov DR, Antonov KA, Atanasova EG, Pentchev CP, Milatchkov LM, Petkova MD, Neykov KG, Nikolov RK
- 9096** Successful resection of a huge retroperitoneal venous hemangioma: A case report
Qin Y, Qiao P, Guan X, Zeng S, Hu XP, Wang B
- 9104** Malignant transformation of biliary adenofibroma combined with benign lymphadenopathy mimicking advanced liver carcinoma: A case report
Wang SC, Chen YY, Cheng F, Wang HY, Wu FS, Teng LS

- 9112** Congenital hepatic cyst: Eleven case reports
Du CX, Lu CG, Li W, Tang WB
- 9121** Endovascular treatment of a ruptured pseudoaneurysm of the internal carotid artery in a patient with nasopharyngeal cancer: A case report
Park JS, Jang HG
- 9127** Varicella-zoster virus meningitis after spinal anesthesia: A case report
Lee YW, Yoo B, Lim YH
- 9132** Chondrosarcoma of the toe: A case report and literature review
Zhou LB, Zhang HC, Dong ZG, Wang CC
- 9142** Tamsulosin-induced life-threatening hypotension in a patient with spinal cord injury: A case report
Lee JY, Lee HS, Park SB, Lee KH
- 9148** CCNO mutation as a cause of primary ciliary dyskinesia: A case report
Zhang YY, Lou Y, Yan H, Tang H
- 9156** Repeated bacteremia and hepatic cyst infection lasting 3 years following pancreatoduodenectomy: A case report
Zhang K, Zhang HL, Guo JQ, Tu CY, Lv XL, Zhu JD
- 9162** Idiopathic cholesterol crystal embolism with atheroembolic renal disease and blue toes syndrome: A case report
Cheng DJ, Li L, Zheng XY, Tang SF
- 9168** Systemic lupus erythematosus with visceral varicella: A case report
Zhao J, Tian M

LETTER TO THE EDITOR

- 9176** Imaging of fibroadenoma: Be careful with imaging follow-up
Ece B, Aydın S

ABOUT COVER

Editorial Board Member of *World Journal of Clinical Cases*, Mohsen Khosravi, MD, Assistant Professor, Department of Psychiatry and Clinical Psychology, Zahedan University of Medical Sciences, Zahedan 9819713955, Iran. m.khosravi@zaums.ac.ir

AIMS AND SCOPE

The primary aim of *World Journal of Clinical Cases* (WJCC, *World J Clin Cases*) is to provide scholars and readers from various fields of clinical medicine with a platform to publish high-quality clinical research articles and communicate their research findings online.

WJCC mainly publishes articles reporting research results and findings obtained in the field of clinical medicine and covering a wide range of topics, including case control studies, retrospective cohort studies, retrospective studies, clinical trials studies, observational studies, prospective studies, randomized controlled trials, randomized clinical trials, systematic reviews, meta-analysis, and case reports.

INDEXING/ABSTRACTING

The WJCC is now abstracted and indexed in Science Citation Index Expanded (SCIE, also known as SciSearch®), Journal Citation Reports/Science Edition, Current Contents®/Clinical Medicine, PubMed, PubMed Central, Scopus, Reference Citation Analysis, China National Knowledge Infrastructure, China Science and Technology Journal Database, and Superstar Journals Database. The 2022 Edition of Journal Citation Reports® cites the 2021 impact factor (IF) for WJCC as 1.534; IF without journal self cites: 1.491; 5-year IF: 1.599; Journal Citation Indicator: 0.28; Ranking: 135 among 172 journals in medicine, general and internal; and Quartile category: Q4. The WJCC's CiteScore for 2021 is 1.2 and Scopus CiteScore rank 2021: General Medicine is 443/826.

RESPONSIBLE EDITORS FOR THIS ISSUE

Production Editor: *Xu Guo*; Production Department Director: *Xiang Li*; Editorial Office Director: *Jin-Lei Wang*.

NAME OF JOURNAL

World Journal of Clinical Cases

ISSN

ISSN 2307-8960 (online)

LAUNCH DATE

April 16, 2013

FREQUENCY

Thrice Monthly

EDITORS-IN-CHIEF

Bao-Gan Peng, Jerzy Tadeusz Chudek, George Kontogeorgos, Maurizio Serati, Ja Hyeon Ku

EDITORIAL BOARD MEMBERS

<https://www.wjnet.com/2307-8960/editorialboard.htm>

PUBLICATION DATE

September 6, 2022

COPYRIGHT

© 2022 Baishideng Publishing Group Inc

INSTRUCTIONS TO AUTHORS

<https://www.wjnet.com/bpg/gerinfo/204>

GUIDELINES FOR ETHICS DOCUMENTS

<https://www.wjnet.com/bpg/GerInfo/287>

GUIDELINES FOR NON-NATIVE SPEAKERS OF ENGLISH

<https://www.wjnet.com/bpg/gerinfo/240>

PUBLICATION ETHICS

<https://www.wjnet.com/bpg/GerInfo/288>

PUBLICATION MISCONDUCT

<https://www.wjnet.com/bpg/gerinfo/208>

ARTICLE PROCESSING CHARGE

<https://www.wjnet.com/bpg/gerinfo/242>

STEPS FOR SUBMITTING MANUSCRIPTS

<https://www.wjnet.com/bpg/GerInfo/239>

ONLINE SUBMISSION

<https://www.f6publishing.com>



Colo-colonic intussusception with post-polypectomy electrocoagulation syndrome: A case report

Jae Young Moon, Min-Ro Lee, Sung Kyun Yim, Gi Won Ha

Specialty type: Gastroenterology and hepatology

Provenance and peer review: Unsolicited article; Externally peer reviewed.

Peer-review model: Single blind

Peer-review report's scientific quality classification

Grade A (Excellent): 0
Grade B (Very good): 0
Grade C (Good): C
Grade D (Fair): D, D
Grade E (Poor): E

P-Reviewer: Chiu CC, Taiwan; Farid K, Egypt; Yu SP, China

Received: October 7, 2021

Peer-review started: October 7, 2021

First decision: January 11, 2022

Revised: January 24, 2022

Accepted: July 24, 2022

Article in press: July 24, 2022

Published online: September 6, 2022



Jae Young Moon, Department of Surgery, Jeonbuk National University Hospital, Jeonju 561-180, Jeonbuk, South Korea

Min-Ro Lee, Gi Won Ha, Research Institute of Clinical Medicine of Jeonbuk National University-Biomedical Research Institute of Jeonbuk National University Hospital, Jeonju 561-180, Jeonbuk, South Korea

Sung Kyun Yim, Department of Internal Medicine, Biomedical Research Institute, Jeonbuk National University Hospital and Medical School, Jeonju 54907, Jeonbuk, South Korea

Corresponding author: Gi Won Ha, MD, PhD, Assistant Professor, Research Institute of Clinical Medicine of Jeonbuk National University-Biomedical Research Institute of Jeonbuk National University Hospital, San 2-20 Geumam-dong, Deokjin-gu, Jeonju 561-180, Jeonbuk, South Korea. acts29@jbnu.ac.kr

Abstract

BACKGROUND

Post-polypectomy electrocoagulation syndrome (PPES) can occur after colonoscopic polypectomy and is usually treated conservatively with a positive prognosis. Nevertheless, there can be cases with complications developing.

CASE SUMMARY

A 58-year-old woman, who had no previous medical history, visited the Emergency Department of another hospital with symptoms of abdominal pain and fever, 1 d after multiple colonoscopic polypectomies. An abdominopelvic computed tomography (CT) scan demonstrated colo-colonic intussusception, and she was transferred to our hospital to consider an operation. CT showed colo-colonic intussusception with PPES and no evidence of obstruction. The physical examination showed localized mild tenderness on the right sided abdomen. The patient fasted and was admitted for treatment with intravenous antibiotics (piperacillin/tazobactam 4.5 g each 8 h, ornidazole 500 mg each 12 h). After admission, the symptoms got better and a follow-up CT scan demonstrated resolution of the PPES and intussusception. The patient was discharged on hospital day 9.

CONCLUSION

Colo-colic intussusception can occur with PPES, and it can be properly treated conservatively.

Key Words: Intussusception; Endoscopy; Colonoscopy; Colonic polyps; Intestinal polyps; Case report

©The Author(s) 2022. Published by Baishideng Publishing Group Inc. All rights reserved.

Core Tip: Post-polypectomy electrocoagulation syndrome (PPES) can occur after colonoscopic polypectomy and is usually treated conservatively with a good prognosis. We report herein a rare case of colo-colonic intussusception with PPES in a previous history-free woman. The patient had no severe clinical signs and was treated conservatively without surgical intervention. This case shows the necessity of combining the clinical scenario with radiologic findings to determine a differential diagnosis and optimal management plan.

Citation: Moon JY, Lee MR, Yim SK, Ha GW. Colo-colonic intussusception with post-polypectomy electrocoagulation syndrome: A case report. *World J Clin Cases* 2022; 10(25): 8939-8944

URL: <https://www.wjgnet.com/2307-8960/full/v10/i25/8939.htm>

DOI: <https://dx.doi.org/10.12998/wjcc.v10.i25.8939>

INTRODUCTION

Colonoscopy is the golden standard for colorectal cancer screening. Polypectomies performed during colonoscopies are generally safe. Post-polypectomy electrocoagulation syndrome (PPES) is an infrequent complication after endoscopic polypectomy. PPES is additionally an electrocoagulation injury of the colonic wall that causes a transmural burn and localized peritonitis[1]. Patients with PPES can develop abdominal pain and/or signs of peritoneal irritations, fever, and leukocytosis, which are like bowel perforation; however, no perforation was seen on imaging study of the abdomen[2-5]. Most cases of PPES are associated with a good prognosis. Patients with less severe symptoms can be treated on an outpatient basis and rarely develop advanced complications[6-8].

CASE PRESENTATION

Chief complaints

A 58-year-old woman visited the Emergency Department of another hospital with abdominal pain and fever. Her abdominopelvic computed tomography (CT) scan demonstrated colo-colonic intussusception, and she was transferred to our hospital for considering an operation.

History of present illness

The patient had multiple colonoscopic polypectomies in the right sided colon, especially in the hepatic flexure colon. A polyp was lifted by submucosal saline injection, a polypectomy was done by electrocoagulation polypectomy (Figure 1) at another hospital 1 d before admittance, and symptoms started that night.

History of past illness

The patient had no medical history.

Personal and family history

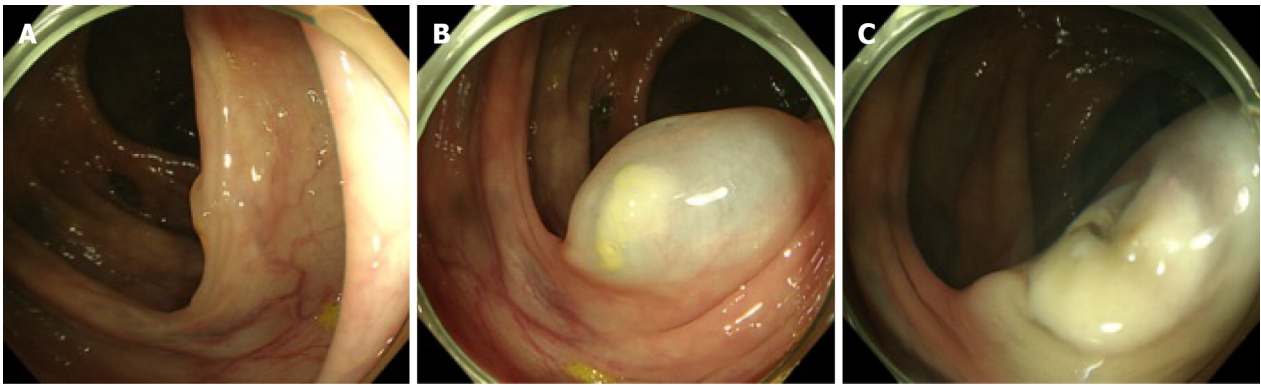
The patient had no personal and family history.

Physical examination

The body temperature was 38 °C, heart rate was 70 bpm, respiratory rate was 20 breaths per minute, and blood pressure was 123/76 mmHg. The abdominal physical examination of the patient showed mild tenderness in the abdomen on the right side.

Laboratory examinations

Routine laboratory data demonstrated an elevated white blood cell count ($11.84 \times 10^3/L$) with a predominance of neutrophils (83%). The erythrocyte sedimentation rate was normal at 10 mm/h, and the serum C-reactive protein was elevated at 66.18 mg/L. The blood biochemistries were normal.



DOI: 10.12998/wjcc.v10.i25.8939 Copyright ©The Author(s) 2022.

Figure 1 Colonoscopic polypectomy. A: Colonoscopy showing a villous polyp; B: Submucosal saline injection under the villous polyp; C: Electrocoagulation polypectomy done on the lifted polyp.

Imaging examinations

An initial imaging evaluation by abdominopelvic CT revealed a target-like lesion in the right-side colon with bowel and fatty mesentery inside, which indicated colo-colonic intussusception. The lesion and proximal colon showed wall thickening with submucosal swelling and highly attenuated infiltration of adjacent pericolic fat. A transmural air bubble was in the wall of a lesion. There was no definite leading point (Figure 2A and B).

The colon lesion was further evaluated by abdominopelvic CT at hospital day (HD) 5 after the initial one, which revealed no evidence of colo-colonic intussusception. There was no colon wall thickening and no air bubble in the colon wall (Figure 2C and D).

FINAL DIAGNOSIS

The final diagnosis for the current case was colo-colonic intussusception with PPES.

TREATMENT

The patient was started on intravenous antibiotics therapy with piperacillin/tazobactam 4.5 g every 8 h, and ornidazole 500 mg every 12 h. The patient fasted and was admitted to the general surgery department.

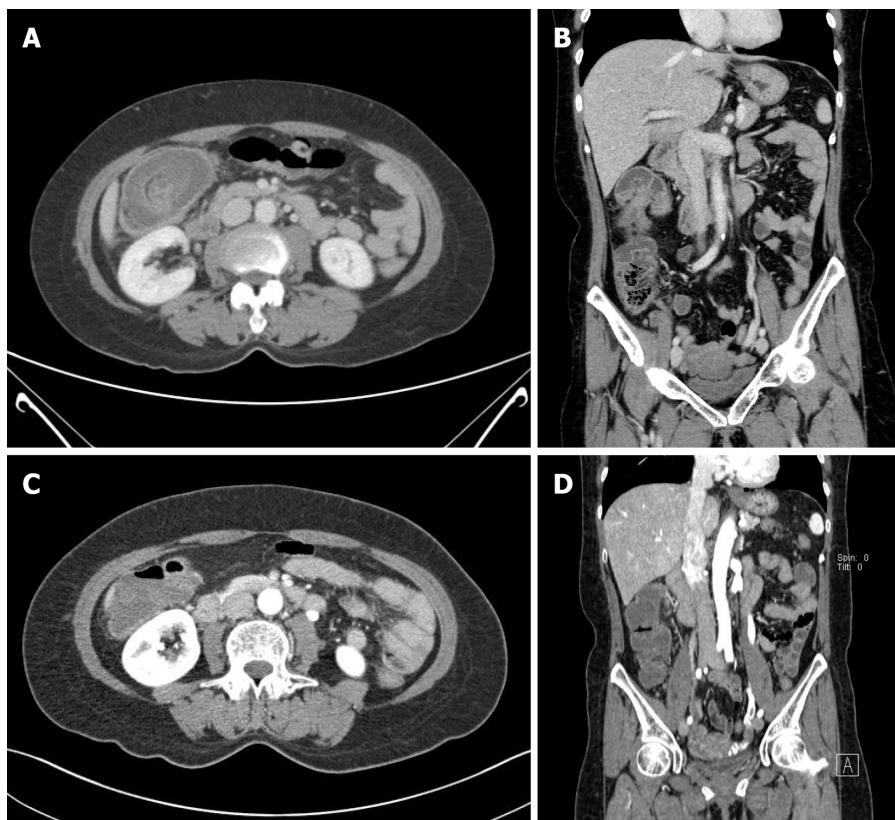
After follow-up CT at HD 5, the patient started sips of water at HD 6. A soft-blended diet started at HD 7. The patient had no discomfort after starting the diet, and she was discharged to home at HD 9.

OUTCOME AND FOLLOW-UP

The patient was transferred to our hospital for consideration of an operation but had no surgical treatment. At a follow-up visit 2 wk after discharge, the patient was asymptomatic and had no complaints.

DISCUSSION

PPES, also known as post-polypectomy syndrome or post-polypectomy coagulation syndrome, is a relatively rare complication of polypectomy with electrocoagulation that may cause perforation or bleeding. Transmural thermal injury can happen after electrocoagulation polypectomy when electrical current is applied during polypectomy which extends into the serosa and muscularis propria. As a result, a transmural burn and localized peritoneal inflammation can occur. CT is the gold-standard imaging for PPES patients, as it shows focal mural thickening with a stratified enhancement pattern, low attenuation with perilesional submucosal edema, and high attenuated infiltration of adjacent pericolic fat without extraluminal air[9]. Up to 5 d after the colonoscopic procedure, patients can develop localized abdominal pain, fever, signs of peritoneal irritation, and leukocytosis without perforation[10].



DOI: 10.12998/wjcc.v10.i25.8939 Copyright ©The Author(s) 2022.

Figure 2 Initial and follow-up contrast-enhanced computed tomography. A: Axial portal phase image shows a target-like lesion in the right side colon with bowel and fatty mesentery inside and colon wall thickening with submucosal swelling and highly attenuated infiltration of adjacent pericolic fat; B: Coronal portal phase image shows invagination of the right side colon; C: Axial portal phase shows resolved state of previously seen colon wall swelling and target-like lesion; D: Coronal portal phase image shows resolved state of previously seen invagination.

The rate of PPES ranges from 0.003% to 0.100%, while the incidence of perforation and hemorrhage is 0.3% and 0.6%, respectively[11]. In a large multicenter study, risk factors correlated with PPES included large size of lesion (> 2 cm), non-polypoidal lesions, lesions on the right sided colon (attributed to decreased thickness of bowel wall), and hypertension[8,10]. Our patient's multiple right-sided treated lesions featured high-risk factors. Lacking information about the shape and size of lesions, we could not find other risk factors.

There was a specific finding in our case that should be noted. Colo-colonic intussusception was present in our case without definite evidence of obstruction. A review of the literature showed that in 1214 adult patients with intussusception, 63% of adult intussusceptions were related to a tumor, where 50% of which were malignant. Further, a malignant tumor was demonstrated to be the etiology in 48% of patients with colo-colonic intussusception[12]. But our patient had a full colonoscopy and had no evidence of a remnant tumor lesion that could be a leading point. Colon wall thickening due to PPES might induce colo-colonic intussusception.

There are several ways to prevent PPES during an endoscopic procedure. First, during hot snare polypectomy, we pull the polyp toward the central area of the lumen immediately before electrocoagulation so that the submucosa is pulled away from the muscularis propria and serosa as the current is applied[13]. In addition, a hot snare, not hot biopsy forceps, is used because the hot biopsy technique increases the risk of thermal injury to the submucosa[14,15]. Second, submucosal fluid injections are used for large polyps. Elevating a large polyp by injecting saline (or an alternative solution) into the submucosa before polyp transection may reduce the incidence of PPES, but there are no large studies to substantiate this hypothesis[10,16,17]. A submucosal fluid injection before polypectomy should theoretically decrease the incidence of transmural burn by enlarging the submucosal layer[2]. Third, we could use alternative polypectomy techniques. Cold snare polypectomy is not associated with PPES, and the available data suggest that the cold snare technique may be a safe and effective option for lesions that are ≥ 1 cm, located in the right colon, or have a non-polypoid shape[18,19].

Similar to this case, Kedia *et al*[13] reported a case of PPES with a radiology report suggesting ileocolic intussusception. In that case, the patient's clinical signs worsened after 24 h and the patient underwent unnecessary diagnostic laparoscopy and was, as a result, exposed to possible operation related complications unnecessarily[20]. In this case, the patient's clinical signs got better and showed no sign of obstruction, and we managed the patient conservatively and did not consider surgical

intervention. This case demonstrates the necessity of combining the clinical scenario with radiologic findings to reach a differential diagnosis and optimal management plan.

CONCLUSION

Colo-colic intussusception can occur with PPES, and it can be properly treated conservatively.

FOOTNOTES

Author contributions: Moon JY, Yim SK, Lee MR, and Ha GW contributed equally to this work; Moon JY, Yim SK, Lee MR, and Ha GW wrote the manuscript; all authors have read and approved the final manuscript.

Informed consent statement: Informed written consent was obtained from the patient for the publication of this report and any accompanying images.

Conflict-of-interest statement: The authors declare that they have no conflict of interest to disclose.

CARE Checklist (2016) statement: The authors have read the CARE Checklist (2016), and the manuscript was prepared and revised according to the CARE Checklist (2016).

Open-Access: This article is an open-access article that was selected by an in-house editor and fully peer-reviewed by external reviewers. It is distributed in accordance with the Creative Commons Attribution NonCommercial (CC BY-NC 4.0) license, which permits others to distribute, remix, adapt, build upon this work non-commercially, and license their derivative works on different terms, provided the original work is properly cited and the use is non-commercial. See: <https://creativecommons.org/licenses/by-nc/4.0/>

Country/Territory of origin: South Korea

ORCID number: Jae Young Moon 0000-0002-8001-7173; Min-Ro Lee 0000-0001-9838-8071; Sung Kyun Yim 0000-0002-3112-5688; Gi Won Ha 0000-0001-9401-1760.

S-Editor: Chen YL

L-Editor: Wang TQ

P-Editor: Chen YL

REFERENCES

- 1 Kim HW. What Is Different between Postpolypectomy Fever and Postpolypectomy Coagulation Syndrome? *Clin Endosc* 2014; **47**: 205-206 [PMID: 24944980 DOI: 10.5946/ce.2014.47.3.205]
- 2 Hirasawa K, Sato C, Makazu M, Kaneko H, Kobayashi R, Kokawa A, Maeda S. Coagulation syndrome: Delayed perforation after colorectal endoscopic treatments. *World J Gastrointest Endosc* 2015; **7**: 1055-1061 [PMID: 26380051 DOI: 10.4253/wjge.v7.i12.1055]
- 3 Nelson DB, McQuaid KR, Bond JH, Lieberman DA, Weiss DG, Johnston TK. Procedural success and complications of large-scale screening colonoscopy. *Gastrointest Endosc* 2002; **55**: 307-314 [PMID: 11868001 DOI: 10.1067/mge.2002.121883]
- 4 Waye JD, Kahn O, Auerbach ME. Complications of colonoscopy and flexible sigmoidoscopy. *Gastrointest Endosc Clin N Am* 1996; **6**: 343-377 [PMID: 8673332]
- 5 Waye JD, Lewis BS, Yessayan S. Colonoscopy: a prospective report of complications. *J Clin Gastroenterol* 1992; **15**: 347-351 [PMID: 1294644]
- 6 Anderloni A, Jovani M, Hassan C, Repici A. Advances, problems, and complications of polypectomy. *Clin Exp Gastroenterol* 2014; **7**: 285-296 [PMID: 25210470 DOI: 10.2147/CEG.S43084]
- 7 Benson BC, Myers JJ, Laczek JT. Postpolypectomy electrocoagulation syndrome: a mimicker of colonic perforation. *Case Rep Emerg Med* 2013; **2013**: 687931 [PMID: 23956889 DOI: 10.1155/2013/687931]
- 8 Cha JM, Lim KS, Lee SH, Joo YE, Hong SP, Kim TI, Kim HG, Park DI, Kim SE, Yang DH, Shin JE. Clinical outcomes and risk factors of post-polypectomy coagulation syndrome: a multicenter, retrospective, case-control study. *Endoscopy* 2013; **45**: 202-207 [PMID: 23381948 DOI: 10.1055/s-0032-1326104]
- 9 Shin YJ, Kim YH, Lee KH, Lee YJ, Park JH. CT findings of post-polypectomy coagulation syndrome and colonic perforation in patients who underwent colonoscopic polypectomy. *Clin Radiol* 2016; **71**: 1030-1036 [PMID: 27085213 DOI: 10.1016/j.crad.2016.03.010]
- 10 Sethi A, Song LM. Adverse events related to colonic endoscopic mucosal resection and polypectomy. *Gastrointest Endosc Clin N Am* 2015; **25**: 55-69 [PMID: 25442958 DOI: 10.1016/j.giec.2014.09.007]
- 11 Ko CW, Dominitz JA. Complications of colonoscopy: magnitude and management. *Gastrointest Endosc Clin N Am* 2010; **20**: 659-671 [PMID: 20889070 DOI: 10.1016/j.giec.2010.07.005]

- 12 **Felix EL**, Cohen MH, Bernstein AD, Schwartz JH. Adult intussusception; case report of recurrent intussusception and review of the literature. *Am J Surg* 1976; **131**: 758-761 [PMID: [937658](#) DOI: [10.1016/0002-9610\(76\)90196-3](#)]
- 13 **Kedia P**, Waye JD. Colon polypectomy: a review of routine and advanced techniques. *J Clin Gastroenterol* 2013; **47**: 657-665 [PMID: [23948754](#) DOI: [10.1097/MCG.0b013e31829ebda7](#)]
- 14 **Ferlitsch M**, Moss A, Hassan C, Bhandari P, Dumonceau JM, Paspatis G, Jover R, Langner C, Bronzwaer M, Nalankilli K, Fockens P, Hazzan R, Gralnek IM, Gschwantler M, Waldmann E, Jeschek P, Penz D, Heresbach D, Moons L, Lemmers A, Paraskeva K, Pohl J, Ponchon T, Regula J, Repici A, Rutter MD, Burgess NG, Bourke MJ. Colorectal polypectomy and endoscopic mucosal resection (EMR): European Society of Gastrointestinal Endoscopy (ESGE) Clinical Guideline. *Endoscopy* 2017; **49**: 270-297 [PMID: [28212588](#) DOI: [10.1055/s-0043-102569](#)]
- 15 **Metz AJ**, Moss A, McLeod D, Tran K, Godfrey C, Chandra A, Bourke MJ. A blinded comparison of the safety and efficacy of hot biopsy forceps electrocauterization and conventional snare polypectomy for diminutive colonic polypectomy in a porcine model. *Gastrointest Endosc* 2013; **77**: 484-490 [PMID: [23199650](#) DOI: [10.1016/j.gie.2012.09.014](#)]
- 16 **Ferrara F**, Luigiano C, Ghersi S, Fabbri C, Bassi M, Landi P, Polifemo AM, Billi P, Cennamo V, Consolo P, Alibrandi A, D'Imperio N. Efficacy, safety and outcomes of 'inject and cut' endoscopic mucosal resection for large sessile and flat colorectal polyps. *Digestion* 2010; **82**: 213-220 [PMID: [20588036](#) DOI: [10.1159/000284397](#)]
- 17 **Luigiano C**, Consolo P, Scaffidi MG, Strangio G, Giacobbe G, Alibrandi A, Pallio S, Tortora A, Melita G, Familiari L. Endoscopic mucosal resection for large and giant sessile and flat colorectal polyps: a single-center experience with long-term follow-up. *Endoscopy* 2009; **41**: 829-835 [PMID: [19750448](#) DOI: [10.1055/s-0029-1215091](#)]
- 18 **Gessl I**, Waldmann E, Penz D, Majcher B, Dokladanska A, Hinterberger A, Szymanska A, Trauner M, Ferlitsch M. Resection rates and safety profile of cold vs. hot snare polypectomy in polyps sized 5-10 mm and 11-20 mm. *Dig Liver Dis* 2019; **51**: 536-541 [PMID: [30853272](#) DOI: [10.1016/j.dld.2019.01.007](#)]
- 19 **Suzuki S**, Gotoda T, Kusano C, Ikehara H, Sugita A, Yamauchi M, Moriyama M. Width and depth of resection for small colorectal polyps: hot versus cold snare polypectomy. *Gastrointest Endosc* 2018; **87**: 1095-1103 [PMID: [29122600](#) DOI: [10.1016/j.gie.2017.10.041](#)]
- 20 **Plumtre I**, Tolppa T, Jawad ZAR, Zafar N. Donut rush to laparoscopy: post-polypectomy electrocoagulation syndrome and the 'pseudo-donut' sign. *BJR Case Rep* 2020; **6**: 20190023 [PMID: [33029357](#) DOI: [10.1259/bjrcr.20190023](#)]



Published by **Baishideng Publishing Group Inc**
7041 Koll Center Parkway, Suite 160, Pleasanton, CA 94566, USA

Telephone: +1-925-3991568

E-mail: bpgoffice@wjgnet.com

Help Desk: <https://www.f6publishing.com/helpdesk>

<https://www.wjgnet.com>

