

World Journal of *Clinical Cases*

World J Clin Cases 2022 July 26; 10(21): 7187-7619



Contents

Thrice Monthly Volume 10 Number 21 July 26, 2022

OPINION REVIEW

- 7187 Effects of glucocorticoids on leukocytes: Genomic and non-genomic mechanisms
Jia WY, Zhang JJ

MINIREVIEWS

- 7195 Apheresis: A cell-based therapeutic tool for the inflammatory bowel disease
Yasmin F, Najeeb H, Naeem U, Moeed A, Koritala T, Surani S
- 7209 *Helicobacter pylori* infection and small intestinal bacterial overgrowth—more than what meets the eye
Dharan M, Wozny D
- 7215 Anatomy of the anterolateral ligament of the knee joint
Park JG, Han SB, Rhim HC, Jeon OH, Jang KM

ORIGINAL ARTICLE

Clinical and Translational Research

- 7224 Molecular mechanisms of Biyu decoction as treatment for psoriasis: A network pharmacology and molecular docking study
Wang Z, Zhang HM, Guo YR, Li LL
- 7242 Expression of hepatocyte nuclear factor 4 alpha, wingless-related integration site, and β -catenin in clinical gastric cancer
Hu Q, Li LL, Peng Z, Yi P

Case Control Study

- 7256 Improved Pittsburgh Sleep Quality Index scores on first postoperative night achieved by propofol anesthesia in patients undergoing ambulatory gynecologic surgery
Hu CH, Chou WY
- 7265 Efficacy of Guhong injection *versus* Butylphthalide injection for mild ischemic stroke: A multicenter controlled study
Zhang WW, Xin J, Zhang GY, Zhai QJ, Zhang HM, Wu CS

Retrospective Study

- 7275 Clinical values of Barcelona Clinic Liver Cancer subgroup and up-to-7 criteria in intermediate stage hepatocellular carcinoma with transcatheter arterial chemoembolization
Lee SW, Peng YC, Lien HC, Ko CW, Tung CF, Chang CS
- 7285 Intervention effect of encouraging mental and programmed nursing of patients in interventional operating room on their compliance and bad moods
Chi RB, Cai YY, Mao HP

- 7293** Preoperative neoadjuvant chemotherapy in patients with breast cancer evaluated using strain ultrasonic elastography
Pan HY, Zhang Q, Wu WJ, Li X
- 7302** Risk factors for delayed intracranial hemorrhage secondary to ventriculoperitoneal shunt: A retrospective study
Chen JC, Duan SX, Xue ZB, Yang SY, Li Y, Lai RL, Tan DH
- 7314** Sequential treatment of severe pneumonia with respiratory failure and its influence on respiratory mechanical parameters and hemodynamics
Niu BY, Wang G, Li B, Zhen GS, Weng YB
- 7324** Effects of alendronate sodium combined with InterTan on osteoporotic femoral intertrochanteric fractures and fracture recurrence
Wang KM, Wei SP, Yin XY, Meng QJ, Kong YM
- 7333** Correlation of magnetic resonance imaging quantitative parameters and apparent diffusion coefficient value with pathological breast cancer
Wang Z, Ren GY, Yin Q, Wang Q
- 7341** Risk factors for delirium after surgery for craniocerebral injury in the neurosurgical intensive care unit
Chen RY, Zhong CH, Chen W, Lin M, Feng CF, Chen CN

Observational Study

- 7348** Effect of osteoarthritic knee flexion deformity correction by total knee arthroplasty on sagittal spinopelvic alignment in Indian population
Puthiyapura LK, Jain M, Tripathy SK, Puliappadamb HM
- 7356** Imaging characteristics of orbital peripheral nerve sheath tumors: Analysis of 34 cases
Dai M, Wang T, Wang JM, Fang LP, Zhao Y, Thakur A, Wang D

Randomized Controlled Trial

- 7365** Comparison of involved-field intensity-modulated radiotherapy combined with S-1 *vs* radiotherapy alone for elderly patients with esophageal cancer
Liu LH, Yan MH, Di YP, Fu ZG, Zhang XD, Li HQ

Randomized Clinical Trial

- 7376** Dexmedetomidine in pediatric unilateral internal inguinal ring ligation
Liu G, Zhang L, Wang HS, Lin Y, Jin HQ, Wang XD, Qiao WN, Zhang YT, Sun JQ, Liu ZN

META-ANALYSIS

- 7386** Impact of cancer on mortality rates in patients with sepsis: A meta-analysis and meta-regression of current studies
Xiang MJ, Chen GL

CASE REPORT

- 7397 Updated clinical and glycomic features of mannosyl-oligosaccharide glucosidase deficiency: Two case reports
Abuduxikuer K, Wang L, Zou L, Cao CY, Yu L, Guo HM, Liang XM, Wang JS, Chen L
- 7409 Solitary necrotic nodules of the liver with "ring"-like calcification: A case report
Bao JP, Tian H, Wang HC, Wang CC, Li B
- 7415 Corticosteroid-induced bradycardia in multiple sclerosis and maturity-onset diabetes of the young due to hepatocyte nuclear factor 4-alpha mutation: A case report
Sohn SY, Kim SY, Joo IS
- 7422 Essential thrombocythemia with non-ST-segment elevation myocardial infarction as the first manifestation: A case report
Wang ZM, Chen WH, Wu YM, Wang LQ, Ye FL, Yin RL
- 7429 Extranasopharyngeal angiofibroma in children: A case report
Yan YY, Lai C, Wu L, Fu Y
- 7438 Deep Sylvian fissure meningiomas: A case report
Wang A, Zhang X, Sun KK, Li C, Song ZM, Sun T, Wang F
- 7445 Acute pulmonary embolism originating from upper limb venous thrombosis following breast cancer surgery: Two case reports
Duan Y, Wang GL, Guo X, Yang LL, Tian FG
- 7451 Managing spondylitis tuberculosis in a patient with underlying diabetes and hypothyroidism: A case report
Novita BD, Muliono AC, Wijaya S, Theodora I, Tjahjono Y, Supit VD, Willianto VM
- 7459 Ovarian mucinous tumor with mural nodules of anaplastic carcinoma: Three case reports
Wang XJ, Wang CY, Xi YF, Bu P, Wang P
- 7467 Transcatheter arterial infusion chemotherapy and embolization for primary lacrimal sac squamous cell carcinoma: A case report
Sun MH, Yi WD, Shen L, Zhou L, Lu JX
- 7474 Programmed cell death-1 inhibitor combination treatment for recurrent proficient mismatch repair/microsatellite-stable type endometrial cancer: A case report
Zhai CY, Yin LX, Han WD
- 7483 Novel compound heterozygous mutation of *SLC12A3* in Gitelman syndrome co-existent with hyperthyroidism: A case report and literature review
Qin YZ, Liu YM, Wang Y, You C, Li LN, Zhou XY, Lv WM, Hong SH, Xiao LX
- 7495 Successful treatment of hyperglycemia with liraglutide in a hospitalized 27-year-old patient with schizophrenia: A case report
Zhang L, Yu WJ, Zhu H, Li HF, Qiao J

- 7502** Refractory lymphoma treated with chimeric antigen receptor T cells combined with programmed cell death-1 inhibitor: A case report
Zhang CJ, Zhang JY, Li LJ, Xu NW
- 7509** Median arcuate ligament syndrome with retroperitoneal haemorrhage: A case report
Lu XC, Pei JG, Xie GH, Li YY, Han HM
- 7517** Novel frameshift mutation in the *AHDC1* gene in a Chinese global developmental delay patient: A case report
Lin SZ, Xie HY, Qu YL, Gao W, Wang WQ, Li JY, Feng XC, Jin CQ
- 7523** Selective nerve block for the treatment of neuralgia in Kummell's disease: A case report
Zhang X, Li ZX, Yin LJ, Chen H
- 7531** Traditional Chinese medicine manipulative reduction combined with percutaneous vertebroplasty for treating type III Kummell's disease: A case report
Hao SS, Zhang RJ, Dong SL, Li HK, Liu S, Li RF, Ren HH, Zhang LY
- 7539** Differential diagnosis and treatment of foot drop caused by an extraneural ganglion cyst above the knee: A case report
Won KH, Kang EY
- 7545** Effect of hydrogen intervention on refractory wounds after radiotherapy: A case report
Zhao PX, Luo RL, Dang Z, Wang YB, Zhang XJ, Liu ZY, Wen XH, Liu MY, Zhang MZ, Adzavon YM, Ma XM
- 7553** Chronic urticaria associated with lung adenocarcinoma — a paraneoplastic manifestation: A case report and literature review
Jiménez LF, Castellón EA, Marengo JD, Mejía JM, Rojas CA, Jiménez FT, Coronell L, Osorio-Llanes E, Mendoza-Torres E
- 7565** Spinal giant cell-rich osteosarcoma-diagnostic dilemma and treatment strategy: A case report
Tseng CS, Wong CE, Huang CC, Hsu HH, Lee JS, Lee PH
- 7571** Primary clear cell sarcoma of soft tissue in the posterior cervical spine invading the medulla oblongata: A case report
Liu CC, Huang WP, Gao JB
- 7577** *Pseudomonas aeruginosa*-related effusive-constrictive pericarditis diagnosed with echocardiography: A case report
Chen JL, Mei DE, Yu CG, Zhao ZY
- 7585** Maternal peripartum bacteremia caused by intrauterine infection with *Comamonas kerstersii*: A case report
Qu H, Zhao YH, Zhu WM, Liu L, Zhu M
- 7592** Considerations of single-lung ventilation in neonatal thoracoscopic surgery with cardiac arrest caused by bilateral pneumothorax: A case report
Zhang X, Song HC, Wang KL, Ren YY

- 7599** Rare primary rectal mucosa-associated lymphoid tissue lymphoma with curative resection by endoscopic submucosal dissection: A case report and review of literature

Tao Y, Nan Q, Lei Z, Miao YL, Niu JK

- 7609** Differences in examination results of small anastomotic fistula after radical gastrectomy with afterward treatments: A case report

Lu CY, Liu YL, Liu KJ, Xu S, Yao HL, Li L, Guo ZS

LETTER TO THE EDITOR

- 7617** Baseline differences may impact on relationship between dietary tryptophan and risk of obesity and type 2 diabetes

Ren XH, Ye YW, He LP

ABOUT COVER

Editorial Board Member of *World Journal of Clinical Cases*, Rajesh Kumar Rajnish, MBBS, MS, Assistant Professor, Department of Orthopaedics, All India Institute of Medical Sciences, Bilaspur, Bilaspur 174001, Himachal Pradesh, India. duktiraj@gmail.com

AIMS AND SCOPE

The primary aim of *World Journal of Clinical Cases* (WJCC, *World J Clin Cases*) is to provide scholars and readers from various fields of clinical medicine with a platform to publish high-quality clinical research articles and communicate their research findings online.

WJCC mainly publishes articles reporting research results and findings obtained in the field of clinical medicine and covering a wide range of topics, including case control studies, retrospective cohort studies, retrospective studies, clinical trials studies, observational studies, prospective studies, randomized controlled trials, randomized clinical trials, systematic reviews, meta-analysis, and case reports.

INDEXING/ABSTRACTING

The WJCC is now abstracted and indexed in Science Citation Index Expanded (SCIE, also known as SciSearch®), Journal Citation Reports/Science Edition, Current Contents®/Clinical Medicine, PubMed, PubMed Central, Scopus, Reference Citation Analysis, China National Knowledge Infrastructure, China Science and Technology Journal Database, and Superstar Journals Database. The 2022 Edition of Journal Citation Reports® cites the 2021 impact factor (IF) for WJCC as 1.534; IF without journal self cites: 1.491; 5-year IF: 1.599; Journal Citation Indicator: 0.28; Ranking: 135 among 172 journals in medicine, general and internal; and Quartile category: Q4. The WJCC's CiteScore for 2021 is 1.2 and Scopus CiteScore rank 2021: General Medicine is 443/826.

RESPONSIBLE EDITORS FOR THIS ISSUE

Production Editor: *Ying-Yi Yuan*; Production Department Director: *Xiang Li*; Editorial Office Director: *Jin-Lei Wang*.

NAME OF JOURNAL

World Journal of Clinical Cases

ISSN

ISSN 2307-8960 (online)

LAUNCH DATE

April 16, 2013

FREQUENCY

Thrice Monthly

EDITORS-IN-CHIEF

Bao-Gan Peng, Jerzy Tadeusz Chudek, George Kontogeorgos, Maurizio Serati, Ja Hyeon Ku

EDITORIAL BOARD MEMBERS

<https://www.wjgnet.com/2307-8960/editorialboard.htm>

PUBLICATION DATE

July 26, 2022

COPYRIGHT

© 2022 Baishideng Publishing Group Inc

INSTRUCTIONS TO AUTHORS

<https://www.wjgnet.com/bpg/gerinfo/204>

GUIDELINES FOR ETHICS DOCUMENTS

<https://www.wjgnet.com/bpg/GerInfo/287>

GUIDELINES FOR NON-NATIVE SPEAKERS OF ENGLISH

<https://www.wjgnet.com/bpg/gerinfo/240>

PUBLICATION ETHICS

<https://www.wjgnet.com/bpg/GerInfo/288>

PUBLICATION MISCONDUCT

<https://www.wjgnet.com/bpg/gerinfo/208>

ARTICLE PROCESSING CHARGE

<https://www.wjgnet.com/bpg/gerinfo/242>

STEPS FOR SUBMITTING MANUSCRIPTS

<https://www.wjgnet.com/bpg/GerInfo/239>

ONLINE SUBMISSION

<https://www.f6publishing.com>



Retrospective Study

Preoperative neoadjuvant chemotherapy in patients with breast cancer evaluated using strain ultrasonic elastography

Hong-Yu Pan, Qian Zhang, Wen-Jing Wu, Xia Li

Specialty type: Radiology, nuclear medicine and medical imaging

Provenance and peer review:

Unsolicited article; Externally peer reviewed.

Peer-review model: Single blind

Peer-review report's scientific quality classification

Grade A (Excellent): 0
Grade B (Very good): B
Grade C (Good): C
Grade D (Fair): 0
Grade E (Poor): 0

P-Reviewer: Lynce F, United States; Teo SH, Malaysia

Received: March 15, 2022

Peer-review started: March 15, 2022

First decision: April 13, 2022

Revised: April 25, 2022

Accepted: June 24, 2022

Article in press: June 24, 2022

Published online: July 26, 2022



Hong-Yu Pan, Qian Zhang, Wen-Jing Wu, Xia Li, Department of Ultrasound, Wuhan Fourth Hospital; Puai Hospital, Tongji Medical College, Huazhong University of Science and Technology, Wuhan 430000, Hubei Province, China

Corresponding author: Xia Li, MD, Technician, Department of Ultrasound, Wuhan Fourth Hospital; Puai Hospital, Tongji Medical College, Huazhong University of Science and Technology, No. 66 Xuefu South Road, Wuhan 430000, Hubei Province, China.

lixia2021314@163.com

Abstract

BACKGROUND

The incidence of breast cancer in China is increasing while its mortality rate is decreasing. The annual breast cancer incidence in China is 39.2 million, accounting for two-thirds of the urban population. In China, breast cancer is the fifth most common malignant tumor overall and the most common in women, accounting for 17% of female malignant tumors.

AIM

To investigate the accuracy of strain ultrasound elastography (SUE) on the evaluation of preoperative neoadjuvant chemotherapy (NAC) in breast cancer.

METHODS

Overall, 90 patients with breast cancer treated at our hospital between January 2018 and February 2019 were selected for this study. The patients received six cycles of NAC with docetaxel, epirubicin, and cyclophosphamide. Surgical treatment was also performed, and pathological reactivity was assessed. The patients were evaluated using conventional ultrasonography and SUE before biopsy. The differences between groups were analyzed to calculate the mean and standard deviation with significance measured using a *t*-test, while multivariate analysis was performed using logistic regression analysis.

RESULTS

Of the patients analyzed, 20 had a pathological complete remission (pCR) while 70 did not achieve pCR after NAC. The ratio of the elastic strain ratio (SR) and elastic score of 4–5 in patients with pCR were 5.5 ± 1.16 and 15.00%, respectively; these were significantly lower than those in patients without pCR (85%) and significantly higher than in patients without pCR (14%). SR and elastic score 4–5 were independent factors influencing NAC efficacy (OR=0.644, 1.426 and 1.366,

respectively, $P < 0.05$). SR was positively correlated with elasticity score ($r_s = 0.411$, $P < 0.05$). The area under the receiver operator characteristic curve of SR and SR combined with elastic score in predicting patients without pCR was 0.822 and 0.891, respectively ($P < 0.05$).

CONCLUSION

Strain ultrasonic elastography may be used to evaluate the effects of preoperative NAC in patients with breast cancer.

Key Words: Breast cancer; Curative effect; Neoadjuvant chemotherapy; Strain ultrasonic elastography

©The Author(s) 2022. Published by Baishideng Publishing Group Inc. All rights reserved.

Core Tip: The changes in a malignant tumor should be evaluated to determine the effects of preoperative neoadjuvant chemotherapy in breast cancer. However, conventional ultrasonography is not as sensitive as the current pathological reactivity detection method and may not meet clinical needs in determining the effect of neoadjuvant chemotherapy. A relatively novel method called strain ultrasound elastography was used in 90 patients with breast cancer in this study. It was found to be more effective and sensitive in the evaluation of the effects of neoadjuvant chemotherapy in patients with breast cancer.

Citation: Pan HY, Zhang Q, Wu WJ, Li X. Preoperative neoadjuvant chemotherapy in patients with breast cancer evaluated using strain ultrasonic elastography. *World J Clin Cases* 2022; 10(21): 7293-7301

URL: <https://www.wjgnet.com/2307-8960/full/v10/i21/7293.htm>

DOI: <https://dx.doi.org/10.12998/wjcc.v10.i21.7293>

INTRODUCTION

There is a high incidence of breast cancer in women. The use of adjuvant chemotherapy can effectively reduce mortality from breast cancer through treatment and prevention of recurrence[1]. Neoadjuvant chemotherapy (NAC) improves the efficacy of conventional treatments for breast cancer and helps prevent metastasis. However, there are individual differences in efficacy. Among these differences, pathological reactivity is an important factor affecting the efficacy of NAC. Therefore, it is necessary to predict the pathological reactivity of patients with breast cancer before starting NAC[2].

Strain ultrasound elastography (SUE) is in the stage of observation and research, and may be applied to the breast, thyroid, prostate, and other tissues of the body. The elastic coefficient between the lesion or tumor and the surrounding normal tissue produces different strain sizes and is displayed in different colors. This ultrasound technology has helped determine the size of malignant lesions through the detection of strain sizes[3]. This study aimed to investigate the accuracy of SUE in the evaluation of preoperative NAC and its related factors in patients with breast cancer.

MATERIALS AND METHODS

Study population

Ninety patients with breast cancer who were treated in our hospital between January 2018 and February 2019 were selected. They were 29–67 years old, with an average age of 49.80 ± 9.11 years. Of these, 78 patients were diagnosed with invasive ductal carcinoma and 12 with invasive lobular carcinoma. The inclusion criteria for the patients were as follows: female patients; informed consent provided by the patients and their families; SUE performed in our hospital; clinical stage II-III; completed six cycles of NAC consisting of docetaxel (75 mg/m^2), epirubicin (75 mg/m^2), and cyclophosphamide (500 mg/m^2); underwent surgical treatment; and pathologically diagnosed with invasive carcinoma. The exclusion criteria for the patients were as follows: underwent radiotherapy, chemotherapy, and other anti-tumor treatments before the study period; had other systemic malignancies; or had other serious diseases such as immune system diseases, endocrine diseases, or liver and kidney dysfunction.

Assessment using strain ultrasound elastography

Conventional ultrasound and SUE were performed before tumor biopsy using our hospital's HV800 ultrasound apparatus with a probe frequency of 8–12 Mhz. Conventional ultrasound examination of the breast was performed first to determine the tumor morphology, boundary, aspect ratio, surrounding tissue, echo, and blood flow changes. SUE was performed thereafter; the region of interest selected was

more than twice the size of the tumor, the area with the tumor was exposed to slight vibration, compression frequency was 3–4 Hz, the depth of the probe was at the subcutaneous layer of the skin, adjacent to the muscle layer. The probe was placed perpendicular to the patient's intact skin; the angle of the probe was adjusted in real time to maintain its perpendicular placement. Measurement of the elastic strain ratio (SR) of the axial adipose tissue to lesion was performed after stable image storage.

The images were assessed using a five-point scoring system[4], as follows: 1 point was assigned if the image was totally green, signifying a completely deformed tumor; 2 points, if the image was mainly green with visible blue, signifying that most of the tumor was deformed, but a small portion remained intact; 3 points, if the image of the area surrounding the tumor was green and deformed while the central area was blue and intact; 4 points, if the image of the tumor was blue overall and without any deformation; and 5 points, if the tumor and its surrounding tissue were blue, signifying no deformation. Hence, a score of 1 to 3 pertains to a low elasticity score, while a score of 4 to 5 pertains to a high elasticity score.

All patients received six cycles of NAC, consisting of docetaxel (75 mg/m²), epirubicin (75 mg/m²), and cyclophosphamide (500 mg/m²). They also underwent surgical treatment to determine their response to the chemotherapy through pathological examination. The patients who were assessed to have human epidermal growth factor receptor 2 positive tumors through fluorescence in situ hybridization received trastuzumab treatment. The doses of trastuzumab administered to the patients were 8 mg/kg body weight on the first cycle followed by 6 mg/kg body weight on the successive five cycles, with each cycle administered once every 3 wk.

Evaluation criteria

Pathological examination of the breast tissue was performed after surgical treatment (Figure 1). The Miller–Payne classification was used to determine pathological remission of malignancy through microscopic assessment. Based on this classification, grade 1 pertains to the unchanged number of invasive cancer cells; grade 2 to the less than 30% decrease in the amount of invasive cancer cells before chemotherapy; grade 3 to the 30%–90% decrease in the amount of invasive cancer cells compared with that before chemotherapy; grade 4 to more than 90% decrease in the amount of invasive cancer cells compared with that before chemotherapy, and with only scattered small cluster cells or single cancer cells retained; and grade 5 to pathological complete remission (pCR) where there are no invasive cancer cells in the original tumor bed. Grades 1–4 are defined as without pCR, and grade 5 is defined as with pCR.

Statistical analysis

Data analysis was performed using SPSS 22.0 software. Nominal data were expressed as percentages. The differences between the groups, such as their SRs, were analyzed to calculate the mean \pm SD and statistical significance analyzed using a *t*-test. Multivariate analysis was performed using logistic regression analysis; the prediction value of SR was analyzed using the receiver operator characteristic (ROC) curve. Statistical significance was set at $P < 0.05$.

RESULTS

Results of NAC chemotherapy

Pathological results of 90 patients after NAC chemotherapy: 14 cases of grade 1, 28 cases of grade 2, 17 cases of grade 3, 11 cases of grade 4, and 20 cases of grade 5. There were 20 pCR patients and 70 non-pCR patients.

Comparison of SR and elasticity scores between pCR and non-pCR patients

The ratio of SR and elasticity scores of 4 to 5 in pCR patients was significantly lower than that of non-pCR patients ($P < 0.05$, Table 1).

Comparison of SR among patients with different elasticity scores

The clinical data were compared between patients with elasticity scores of 4 to 5 and 1 to 3 points, and the difference was not statistically significant ($P > 0.05$), as shown in Table 2. SR in patients with elastic score 4–5 was significantly higher than that in patients with elastic score 1–3 ($P < 0.05$). As shown in Table 3.

Comparison of general clinical data of pCR and non-pCR patients

The proportion of Ki-67 $> 14\%$ in pCR patients was significantly higher than that in non-pCR patients ($P < 0.05$). The age, lesion diameter, and estrogen receptor positivity were compared between pCR patients and non-pCR patients, and the difference was not statistically significant ($P > 0.05$, Table 4).

Table 1 Comparison of strain ratio and elasticity scores between pathological complete remission and non-pathological complete remission patients

Groups	Cases	SR	Elasticity score 4-5, n (%)
pCR	20	5.50 ± 1.16	3 (15.00)
Non-pCR	70	12.29 ± 6.60	54 (77.14)
<i>t</i> / χ^2 value		-4.563	25.868
<i>P</i> value		0.000	0.000

pCR: Pathological complete remission; SR: Strain ratio.

Table 2 Comparison of general clinical data of patients with different flexibility scores, n (%)

Groups	Elasticity score 4-5	Elasticity score 1-3	<i>t</i> value	<i>P</i> value
Cases	57	33		
Age (yr)	50.06 ± 8.02	50.82 ± 9.11	-0.412	0.681
ER positive	35 (61.40)	18 (54.55)	0.406	0.524
PR positive	30 (52.63)	16 (48.48)	0.144	0.705
Ki-67 > 14%	32 (56.14)	19 (57.58)	0.018	0.895
HER2 positive	14 (24.56)	5 (15.15)	1.111	0.292
Lesion diameter (cm)	4.35 ± 1.13	4.30 ± 1.10	0.204	0.839

ER: Estrogen receptor; PR: Progesterone receptor; HER2: Human epidermal growth factor receptor 2.

Table 3 Comparison of SR among patients with different elasticity scores

Group	Cases	SR	<i>t</i> value	<i>P</i> value
Elasticity score 4-5	57	11.28 ± 1.43	4.271	0.000
Elasticity score 1-3	33	9.92 ± 1.50		

SR: Strain ratio.

Correlation analysis

Spearman rank correlation analysis of the above indicators showed that SR was positively correlated with the elasticity score ($r_s = 0.411$, $P < 0.05$), and there was no correlation between SR and elasticity score (Table 5).

Multi-factor analysis

The clinical data of patients were used as independent variables, and the NAC efficacy was used as the dependent variable (pCR assignment 0, non-pCR assignment 1) for logistic regression analysis. The results showed that Ki-67 > 14%, SR, and elasticity scores 4–5 were independent influencing factors of NAC efficacy (OR = 0.644, 1.426, and 1.366, respectively, $P < 0.05$, Table 6).

SR, predicted value

The area under ROC curve of SR and SR combined with elasticity score in predicting non-pCR was 0.822 and 0.891, respectively ($P < 0.05$, Figure 2A and B, Table 7).

DISCUSSION

NAC is an important supplement to the treatment of breast cancer and can significantly reduce the recurrence of malignant tumors in patients. It helps improve the prognosis of patients and the attainment of pCR. However, some previous studies[5-7] have found significant differences in the

Table 4 Comparison of general clinical data of pathological complete remission and non-pathological complete remission patients, *n* (%)

General clinical data	pCR	Non-pCR	<i>t</i> / χ^2 value	<i>P</i> value
Cases	20	70		
Age (yr)	49.02 ± 8.19	51.02 ± 9.92	-0.824	0.412
Lesion diameter (cm)	4.42 ± 1.23	4.12 ± 1.20	0.981	0.329
ER positive	12 (60.00)	41 (58.57)	0.013	0.909
PR positive	11 (55.00)	35 (50.00)	0.156	0.693
Ki-67 > 14%	17 (85.00)	34 (48.57)	8.407	0.004
HER2 positive	7 (35.00)	12 (17.14)	2.003	0.157
Pathological type			0.386	0.534
Invasive ductal carcinoma	16 (80.00)	62 (88.57)		
Invasive lobular carcinoma	4 (20.00)	8 (11.43)		
Molecular subtypes			2.548	0.467
Triple negative	3 (15.00)	10 (14.29)		
HER2	6 (30.00)	23 (32.86)		
Luminal B	11 (55.00)	30 (42.86)		
Luminal A	0 (0.00)	7 (10.00)		

pCR: Pathological complete remission; ER: Estrogen receptor; PR: Progesterone receptor; HER2: Human epidermal growth factor receptor 2.

Table 5 Correlation coefficient

Index	SR	
	<i>r_s</i> value	<i>P</i> value
Age	0.193	0.304
Lesion diameter	0.182	0.353
ER positive	0.082	0.405
PR positive	0.100	0.722
Ki-67 > 14%	0.092	0.565
HER2 positive	0.182	0.672
Elasticity score	0.411	0.000

SR: Strain ratio; ER: Estrogen receptor; PR: Progesterone receptor; HER2: Human epidermal growth factor receptor 2.

pathological response of individuals after NAC. The diagnosis of pathological remission is of great significance for individualized treatment and prognosis. However, there are differences in the sensitivity of the current NAC pathological reactivity detection methods, and simple conventional ultrasound cannot meet the clinical needs.

Previous literature[8-10] suggests that ultrasound elastography may have potential value in determining the pathological reactivity of malignant tumors after NAC, as patients with low elasticity scores were more likely to achieve complete tumor remission. Other studies[11,12] also suggested that the hardness of the tissue in breast cancer evaluated by ultrasound elastography was closely related to NAC reactivity. This study found that the SR and elasticity scores of 4-5 in patients with pCR were significantly lower than those in patients without pCR. The SR of patients with elasticity score of 4-5 was significantly higher than that of patients with elasticity score of 4-5. These results suggest that there is a low elasticity score in patients with breast cancer with complete remission; the proportion of SR lesions also decreased significantly. The SUE examination used the characteristics of uneven elastic coefficient distribution in the tissue; consequently, the strain distribution will also vary due to the unevenness of the elasticity in the tissue. The strain coefficient is small in an area with a large elastic

Table 6 Logistic regression analysis					
Factor	β	SE	Walds	P value	OR (95%CI)
Ki-67 > 14%	-0.440	0.132	11.111	0.000	0.644 (0.497-0.834)
SR	0.355	0.122	8.467	0.000	1.426 (1.123-1.811)
Elasticity score 4-5	0.312	0.2112	7.760	0.000	1.366 (1.097-1.702)

SR: Strain ratio.

Table 7 Receiver operator characteristic curve parameters					
Index	Area under curve	P value	Sensitivity	Specificity	
SR	0.802	0.000	80.00%	70.00%	
SR combined flexibility score	0.891	0.000	82.00%	83.00%	

SR: Strain ratio.



Figure 1 Strain ultrasound elastography examination chart of a patient. A 45-year-old female patient with invasive ductal carcinoma, strain ultrasound elastography elasticity score of 4 points, strain ratio of 2.06, curative effect after neoadjuvant chemotherapy is pathological complete remission.

coefficient; on the contrary, the strain coefficient is large in an area with a small elastic coefficient.

The Ki-67 antigen is a popular biological indicator in the study of various malignant tumors, especially breast cancer. Currently, Ki-67 antigen detection is generally used to describe cell proliferation in malignant tumors and to achieve targeted personalized treatment[13-15]. In this study, the comparison of clinical general data between patients with and without pCR showed that the proportion of Ki-67 was > 14% in patients with pCR and was significantly higher than that in patients without pCR. This suggests that the amount of Ki-67 expression in the tumor may be an important factor that affects the prognosis of NAC treatment in patients with breast cancer. The expression of Ki-67 in tumor proliferation covers all phases of the cycle except the G0 phase, hence the proportion of Ki-67 >14% in patients with pCR is higher. Related studies[16-18] also suggested that proliferating-cell nuclear antigen and Ki-67 could be used to detect the proliferation of breast cancer cells, and that they could be used as substitutes for each other. However, Ki-67 is more useful since it is expressed in all phases of the proliferative cycle of the malignant cells.

Multivariate analysis showed that Ki-67 > 14%, SR, and elasticity scores 4-5 independently influenced the efficacy of NAC. The clinical data of patients were the independent variables, and the NAC efficacy was the dependent variable. The SR values measured by SUE showed a high sensitivity and specificity in predicting pCR in patients with breast cancer. The expression of Ki-67 in low-differentiated adenocarcinoma tissues was significantly higher than that in medium and highly differentiated adenocarcinoma

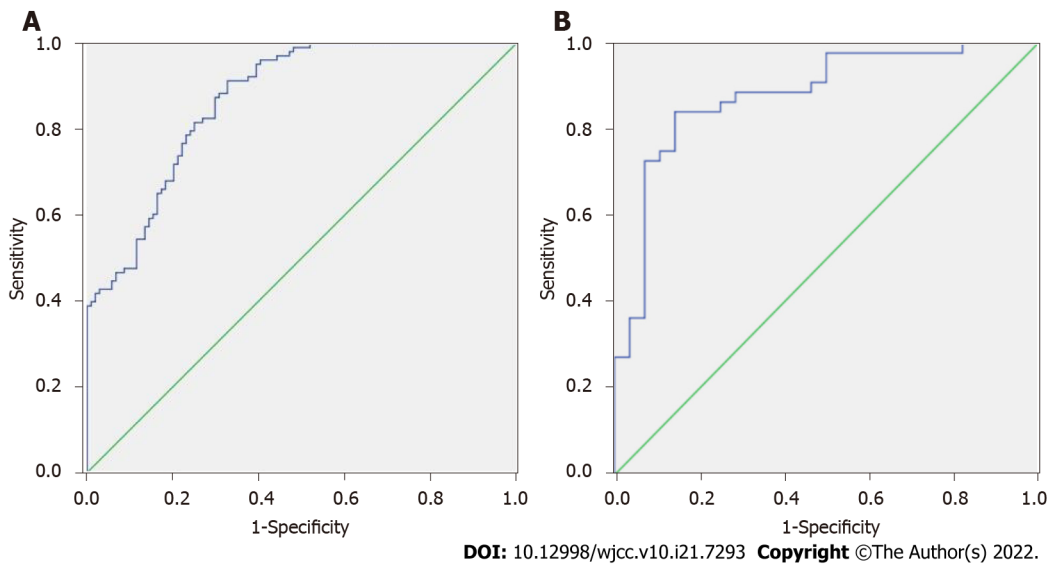


Figure 2 Receiver operator characteristic curve of strain ratio prediction and strain ratio joint elastic score prediction. A: Strain ratio (SR) prediction; B: SR joint elastic score prediction.

tissues; this indicates that the positive degree of Ki-67 staining was correlated with histological grade and was related to the occurrence and development of breast cancer. High Ki-67 expression signifies poor prognosis and is an important reference value for the diagnosis, treatment, and evaluation of breast cancer. SUE is an important supplement to the two-dimensional gray-scale ultrasound and can better evaluate the hardness of breast masses with good repeatability[19,20]. Unlike conventional two-dimensional gray-scale ultrasound, SUE can evaluate the hardness of lesions and indirectly reflect the composition of the tissue matrix. Therefore, the main potential benefit of SUE is a relatively accurate assessment of residual cancer after NAC. It is especially suitable for the assessment of cribriform, multinodular, and alternative atrophy patterns of residual cancer. Patients without pCR may have a non-uniform density of their breast mass that may be detected as a higher proportion of SR values and an elasticity score of 4–5 points. These explain the potential of the SR value and elasticity score of 4–5 points as predictors of the efficacy of NAC in patients with breast cancer.

CONCLUSION

Previous studies have mainly focused on the treatment and prognosis of patients with breast cancer after receiving NAC treatment. There are only a few studies and existing information on the prediction of pathological reactivity. This study analyzed and explored the pathological reactivity of breast cancer after NAC. It analyzed the possible mechanism of this change. This may potentially serve as a reference for the individualized treatment and prognosis of clinical NAC-assisted breast cancer treatment. In addition, this study also conducted an in-depth discussion on the diagnosis and efficacy analysis of breast cancer based on the relevant parameters of SUE technology that can provide a reference for clinical practice. However, this study also has a few shortcomings in that the sample size is relatively small and the findings will need to be confirmed by further large-sample studies.

ARTICLE HIGHLIGHTS

Research background

Breast cancer has the seventh highest mortality rate of all cancers in China and has the fifth highest cancer mortality in women, accounting for 8.2% of all female malignant tumors and seriously impacting women's health and quality of life.

Research motivation

Early detection, diagnosis, and treatment are key to reducing mortality and improving cure rates.

Research objectives

Strain ultrasound elastography (SUE) is a new type of ultrasound technology that can determine relative

tissue hardness by evaluating the desmoplastic changes in a tissue to differentiate between benign and malignant tumors.

Research methods

It is a way to diagnose tumors and diffuse diseases that cannot be detected by conventional ultrasound.

Research results

Of the patients analyzed, 20 had a pathological complete remission (pCR) while 70 did not achieve pCR after neoadjuvant chemotherapy (NAC).

Research conclusions

Strain ultrasonic elastography may be used to evaluate the effects of preoperative NAC in patients with breast cancer.

Research perspectives

SUE is a new type of ultrasound technology that can determine relative tissue hardness by evaluating the desmoplastic changes in a tissue to differentiate between benign and malignant tumors.

FOOTNOTES

Author contributions: Pan HY and Li X designed this study; Pan HY wrote the manuscript; Pan HY, Zhang Q, Wu WJ and Li X collected the data; and all authors have read and approve the final manuscript.

Institutional review board statement: This study was reviewed and approved by the Fourth Hospital Puai Hospital, Tongji Medical College, Huazhong University of Science and Technology.

Informed consent statement: All study participants, or their legal guardian, provided informed written consent prior to study enrollment.

Conflict-of-interest statement: All the authors declare no conflict of interest.

Data sharing statement: No additional data are available.

Open-Access: This article is an open-access article that was selected by an in-house editor and fully peer-reviewed by external reviewers. It is distributed in accordance with the Creative Commons Attribution NonCommercial (CC BY-NC 4.0) license, which permits others to distribute, remix, adapt, build upon this work non-commercially, and license their derivative works on different terms, provided the original work is properly cited and the use is non-commercial. See: <https://creativecommons.org/licenses/by-nc/4.0/>

Country/Territory of origin: China

ORCID number: Hong-Yu Pan 0000-0002-8960-7751; Qian Zhang 0000-0002-6196-8109; Wen-Jing Wu 0000-0002-1115-5935; Xia Li 0000-0003-2801-2524.

S-Editor: Wang JL

L-Editor: A

P-Editor: Wang JL

REFERENCES

- 1 Shimoyama D, Shitara H, Hamano N, Ichinose T, Sasaki T, Yamamoto A, Kobayashi T, Tajika T, Takagishi K, Chikuda H. Reliability of shoulder muscle stiffness measurement using strain ultrasound elastography and an acoustic coupler. *J Med Ultrason* (2001) 2021; **48**: 91-96 [PMID: 33052492 DOI: 10.1007/s10396-020-01056-0]
- 2 Evans A, Sim YT, Pourreyaon C, Thompson A, Jordan L, Fleming D, Purdie C, Macaskill J, Vinnicombe S, Pharoah P. Pre-operative stromal stiffness measured by shear wave elastography is independently associated with breast cancer-specific survival. *Breast Cancer Res Treat* 2018; **171**: 383-389 [PMID: 29858751 DOI: 10.1007/s10549-018-4836-5]
- 3 Akimoto E, Kadota T, Kajitani K, Emi A, Shigematsu H, Ohara M, Masumoto N, Okada M. Role of ¹⁸F-PET/CT in Predicting Prognosis of Patients With Breast Cancer After Neoadjuvant Chemotherapy. *Clin Breast Cancer* 2018; **18**: 45-52 [PMID: 28993056 DOI: 10.1016/j.clbc.2017.09.006]
- 4 Cabrera-Galeana P, Muñoz-Montañón W, Lara-Medina F, Alvarado-Miranda A, Pérez-Sánchez V, Villarreal-Garza C, Quintero RM, Porras-Reyes F, Bargallo-Rocha E, Del Carmen I, Mohar A, Arrieta O. Ki67 Changes Identify Worse Outcomes in Residual Breast Cancer Tumors After Neoadjuvant Chemotherapy. *Oncologist* 2018; **23**: 670-678 [PMID: 29490940 DOI: 10.1634/theoncologist.2017-0396]

- 5 **Yang X**, Zhai D, Zhang T, Zhang S. Use of strain ultrasound elastography versus fine-needle aspiration cytology for the differential diagnosis of thyroid nodules: a retrospective analysis. *Clinics (Sao Paulo)* 2020; **75**: e1594 [PMID: [32578823](#) DOI: [10.6061/clinics/2020/e1594](#)]
- 6 **Ersoy YE**, Kadioglu H. Review of Novel Sentinel Lymph Node Biopsy Techniques in Breast Cancer Patients Treated With Neoadjuvant Chemotherapy. *Clin Breast Cancer* 2018; **18**: e555-e559 [PMID: [29429940](#) DOI: [10.1016/j.clbc.2018.01.004](#)]
- 7 **Early Breast Cancer Trialists' Collaborative Group (EBCTCG)**. Long-term outcomes for neoadjuvant versus adjuvant chemotherapy in early breast cancer: meta-analysis of individual patient data from ten randomised trials. *Lancet Oncol* 2018; **19**: 27-39 [PMID: [29242041](#) DOI: [10.1016/S1470-2045\(17\)30777-5](#)]
- 8 **Della Pepa GM**, Menna G, Stifano V, Pezzullo AM, Auricchio AM, Rapisarda A, Caccavella VM, La Rocca G, Sabatino G, Marchese E, Olivi A. Predicting meningioma consistency and brain-meningioma interface with intraoperative strain ultrasound elastography: a novel application to guide surgical strategy. *Neurosurg Focus* 2021; **50**: E15 [PMID: [33386015](#) DOI: [10.3171/2020.10.FOCUS20797](#)]
- 9 **Jia K**, Li L, Wu XJ, Hao MJ, Xue HY. Contrast-enhanced ultrasound for evaluating the pathologic response of breast cancer to neoadjuvant chemotherapy: A meta-analysis. *Medicine (Baltimore)* 2019; **98**: e14258 [PMID: [30681622](#) DOI: [10.1097/MD.00000000000014258](#)]
- 10 **Dickson DM**, Smith SL, Hendry GJ. Can patient characteristics explain variance in ultrasound strain elastography measures of the quadratus femoris and patellar tendons? *Knee* 2021; **28**: 282-293 [PMID: [33460994](#) DOI: [10.1016/j.knee.2020.12.011](#)]
- 11 **Li XP**, Lan JY, Liu DQ, Zhou H, Qian MM, Wang WW, Yang M. OCA2 rs4778137 polymorphism predicts survival of breast cancer patients receiving neoadjuvant chemotherapy. *Gene* 2018; **651**: 161-165 [PMID: [29409738](#) DOI: [10.1016/j.gene.2018.01.100](#)]
- 12 **Martín-Sánchez JC**, Lunet N, González-Marrón A, Lidón-Moyano C, Matilla-Santander N, Clèries R, Malvezzi M, Negri E, Morais S, Costa AR, Ferro A, Lopes-Conceição L, La Vecchia C, Martínez-Sánchez JM. Projections in Breast and Lung Cancer Mortality among Women: A Bayesian Analysis of 52 Countries Worldwide. *Cancer Res* 2018; **78**: 4436-4442 [PMID: [30068667](#) DOI: [10.1158/0008-5472.CAN-18-0187](#)]
- 13 **Xue LB**, Liu YH, Zhang B, Yang YF, Yang D, Zhang LW, Jin J, Li J. Prognostic role of high neutrophil-to-lymphocyte ratio in breast cancer patients receiving neoadjuvant chemotherapy: Meta-analysis. *Medicine (Baltimore)* 2019; **98**: e13842 [PMID: [30608401](#) DOI: [10.1097/MD.00000000000013842](#)]
- 14 **Murayama M**, Nosaka K, Inami T, Shima N, Yoneda T. Biceps brachii muscle hardness assessed by a push-in meter in comparison to ultrasound strain elastography. *Sci Rep* 2020; **10**: 20308 [PMID: [33219272](#) DOI: [10.1038/s41598-020-77330-5](#)]
- 15 **Chen Y**, Shi XE, Tian JH, Yang XJ, Wang YF, Yang KH. Survival benefit of neoadjuvant chemotherapy for resectable breast cancer: A meta-analysis. *Medicine (Baltimore)* 2018; **97**: e10634 [PMID: [29768327](#) DOI: [10.1097/MD.00000000000010634](#)]
- 16 **Asano Y**, Kashiwagi S, Goto W, Takada K, Takahashi K, Hatano T, Takashima T, Tomita S, Motomura H, Ohsawa M, Hirakawa K, Ohira M. Prediction of Treatment Response to Neoadjuvant Chemotherapy in Breast Cancer by Subtype Using Tumor-infiltrating Lymphocytes. *Anticancer Res* 2018; **38**: 2311-2321 [PMID: [29599354](#) DOI: [10.21873/anticancer.12476](#)]
- 17 **Jin Z**, Chenghao Y, Cheng P. Anticancer Effect of Tanshinones on Female Breast Cancer and Gynecological Cancer. *Front Pharmacol* 2021; **12**: 824531 [PMID: [35145409](#) DOI: [10.3389/fphar.2021.824531](#)]
- 18 **Yun SJ**, Jin W, Cho NS, Ryu KN, Yoon YC, Cha JG, Park JS, Park SY, Choi NY. Shear-Wave and Strain Ultrasound Elastography of the Supraspinatus and Infraspinatus Tendons in Patients with Idiopathic Adhesive Capsulitis of the Shoulder: A Prospective Case-Control Study. *Korean J Radiol* 2019; **20**: 1176-1185 [PMID: [31270981](#) DOI: [10.3348/kjr.2018.0918](#)]
- 19 **Tupper P**, Leung K, Wang Y, Jongman A, Sereno JA. Characterizing the distinctive acoustic cues of Mandarin tones. *J Acoust Soc Am* 2020; **147**: 2570 [PMID: [32359306](#) DOI: [10.1121/10.0001024](#)]
- 20 **Hahn S**, Lee YH, Lee SH, Suh JS. Value of the Strain Ratio on Ultrasonic Elastography for Differentiation of Benign and Malignant Soft Tissue Tumors. *J Ultrasound Med* 2017; **36**: 121-127 [PMID: [27918075](#) DOI: [10.7863/ultra.16.01054](#)]



Published by **Baishideng Publishing Group Inc**
7041 Koll Center Parkway, Suite 160, Pleasanton, CA 94566, USA

Telephone: +1-925-3991568

E-mail: bpgoffice@wjgnet.com

Help Desk: <https://www.f6publishing.com/helpdesk>

<https://www.wjgnet.com>

