

World Journal of *Clinical Cases*

World J Clin Cases 2022 July 16; 10(20): 6759-7186



Contents

Thrice Monthly Volume 10 Number 20 July 16, 2022

OPINION REVIEW

- 6759 Semaglutide might be a key for breaking the vicious cycle of metabolically associated fatty liver disease spectrum?

Cigrovski Berkovic M, Rezić T, Bilic-Curcic I, Mrzljak A

MINIREVIEWS

- 6769 Drainage of pancreatic fluid collections in acute pancreatitis: A comprehensive overview
Bansal A, Gupta P, Singh AK, Shah J, Samanta J, Mandavdhare HS, Sharma V, Sinha SK, Dutta U, Sandhu MS, Kochhar R

- 6784 Frontiers of COVID-19-related myocarditis as assessed by cardiovascular magnetic resonance

Luo Y, Liu BT, Yuan WF, Zhao CX

ORIGINAL ARTICLE

Case Control Study

- 6794 Urinary and sexual function changes in benign prostatic hyperplasia patients before and after transurethral columnar balloon dilatation of the prostate

Zhang DP, Pan ZB, Zhang HT

- 6803 Effects of the information-knowledge-attitude-practice nursing model combined with predictability intervention on patients with cerebrovascular disease

Huo HL, Gui YY, Xu CM, Zhang Y, Li Q

Retrospective Cohort Study

- 6811 Effects of Kampo medicine hangebyakujutsutemmato on persistent postural-perceptual dizziness: A retrospective pilot study

Miwa T, Kanemaru SI

Retrospective Study

- 6825 Longitudinal changes in personalized platelet count metrics are good indicators of initial 3-year outcome in colorectal cancer

Herold Z, Herold M, Lohinszky J, Szasz AM, Dank M, Somogyi A

- 6845 Efficacy of Kegel exercises in preventing incontinence after partial division of internal anal sphincter during anal fistula surgery

Garg P, Yagnik VD, Kaur B, Menon GR, Dawka S

Observational Study

- 6855 Influence of the water jet system vs cavitron ultrasonic surgical aspirator for liver resection on the remnant liver

Hanaki T, Tsuda A, Sunaguchi T, Goto K, Morimoto M, Murakami Y, Kihara K, Matsunaga T, Yamamoto M, Tokuyasu N, Sakamoto T, Hasegawa T, Fujiwara Y

- 6865** Critical values of monitoring indexes for perioperative major adverse cardiac events in elderly patients with biliary diseases

Zhang ZM, Xie XY, Zhao Y, Zhang C, Liu Z, Liu LM, Zhu MW, Wan BJ, Deng H, Tian K, Guo ZT, Zhao XZ

- 6876** Comparative study of surface electromyography of masticatory muscles in patients with different types of bruxism

Lan KW, Jiang LL, Yan Y

Randomized Controlled Trial

- 6890** Dural puncture epidural technique provides better anesthesia quality in repeat cesarean delivery than epidural technique: Randomized controlled study

Wang SY, He Y, Zhu HJ, Han B

SYSTEMATIC REVIEWS

- 6900** Network pharmacology-based strategy for predicting therapy targets of Sanqi and Huangjing in diabetes mellitus

Cui XY, Wu X, Lu D, Wang D

META-ANALYSIS

- 6915** Endoscopic submucosal dissection for early signet ring cell gastric cancer: A systematic review and meta-analysis

Weng CY, Sun SP, Cai C, Xu JL, Lv B

- 6927** Prognostic value of computed tomography derived skeletal muscle mass index in lung cancer: A meta-analysis

Pan XL, Li HJ, Li Z, Li ZL

CASE REPORT

- 6936** Autosomal dominant osteopetrosis type II resulting from a *de novo* mutation in the *CLCN7* gene: A case report

Song XL, Peng LY, Wang DW, Wang H

- 6944** Clinical expression and mitochondrial deoxyribonucleic acid study in twins with 14484 Leber's hereditary optic neuropathy: A case report

Chuenkongkaew WL, Chinkulkitnivat B, Lertrit P, Chirapapaisan N, Kaewsutthi S, Suktitipat B, Mitrpant C

- 6954** Management of the enteroatmospheric fistula: A case report

Cho J, Sung K, Lee D

- 6960** Lower lip recurrent keratoacanthoma: A case report

Liu XG, Liu XG, Wang CJ, Wang HX, Wang XX

- 6966** Optic disc coloboma associated with macular retinoschisis: A case report

Zhang W, Peng XY

- 6974** A 7-year-old boy with recurrent cyanosis and tachypnea: A case report
Li S, Chen LN, Zhong L
- 6981** Schwannomatosis patient who was followed up for fifteen years: A case report
Li K, Liu SJ, Wang HB, Yin CY, Huang YS, Guo WT
- 6991** Intentional replantation combined root resection therapy for the treatment of type III radicular groove with two roots: A case report
Tan D, Li ST, Feng H, Wang ZC, Wen C, Nie MH
- 6999** Clinical features and genetic variations of severe neonatal hyperbilirubinemia: Five case reports
Lin F, Xu JX, Wu YH, Ma YB, Yang LY
- 7006** Percutaneous transhepatic access for catheter ablation of a patient with heterotaxy syndrome complicated with atrial fibrillation: A case report
Wang HX, Li N, An J, Han XB
- 7013** Secondary positioning of rotationally asymmetric refractive multifocal intraocular lens in a patient with glaucoma: A case report
Fan C, Zhou Y, Jiang J
- 7020** Laparoscopic repair of diaphragmatic hernia associating with radiofrequency ablation for hepatocellular carcinoma: A case report
Tsunoda J, Nishi T, Ito T, Inaguma G, Matsuzaki T, Seki H, Yasui N, Sakata M, Shimada A, Matsumoto H
- 7029** Hypopituitary syndrome with pituitary crisis in a patient with traumatic shock: A case report
Zhang XC, Sun Y
- 7037** Solitary plasmacytoma of the left rib misdiagnosed as angina pectoris: A case report
Yao J, He X, Wang CY, Hao L, Tan LL, Shen CJ, Hou MX
- 7045** Secondary coronary artery ostial lesions: Three case reports
Liu XP, Wang HJ, Gao JL, Ma GL, Xu XY, Ji LN, He RX, Qi BYE, Wang LC, Li CQ, Zhang YJ, Feng YB
- 7054** Bladder perforation injury after percutaneous peritoneal dialysis catheterization: A case report
Shi CX, Li ZX, Sun HT, Sun WQ, Ji Y, Jia SJ
- 7060** Myotonic dystrophy type 1 presenting with dyspnea: A case report
Jia YX, Dong CL, Xue JW, Duan XQ, Xu MY, Su XM, Li P
- 7068** Novel mutation in the *SALL1* gene in a four-generation Chinese family with uraemia: A case report
Fang JX, Zhang JS, Wang MM, Liu L
- 7076** Malignant transformation of primary mature teratoma of colon: A case report
Liu J

- 7082** Treatment of pyogenic liver abscess by surgical incision and drainage combined with platelet-rich plasma: A case report
Wang JH, Gao ZH, Qian HL, Li JS, Ji HM, Da MX
- 7090** Left bundle branch pacing in a ventricular pacing dependent patient with heart failure: A case report
Song BX, Wang XX, An Y, Zhang YY
- 7097** Solitary fibrous tumor of the liver: A case report and review of the literature
Xie GY, Zhu HB, Jin Y, Li BZ, Yu YQ, Li JT
- 7105** MutL homolog 1 germline mutation c.(453+1_454-1)_(545+1_546-1)del identified in lynch syndrome: A case report and review of literature
Zhang XW, Jia ZH, Zhao LP, Wu YS, Cui MH, Jia Y, Xu TM
- 7116** Malignant histiocytosis associated with mediastinal germ cell tumor: A case report
Yang PY, Ma XL, Zhao W, Fu LB, Zhang R, Zeng Q, Qin H, Yu T, Su Y
- 7124** Immunoglobulin G4 associated autoimmune cholangitis and pancreatitis following the administration of nivolumab: A case report
Agrawal R, Guzman G, Karimi S, Giulianotti PC, Lora AJM, Jain S, Khan M, Boulay BR, Chen Y
- 7130** Portal vein thrombosis in a noncirrhotic patient after hemihepatectomy: A case report and review of literature
Zhang SB, Hu ZX, Xing ZQ, Li A, Zhou XB, Liu JH
- 7138** Microvascular decompression for a patient with oculomotor palsy caused by posterior cerebral artery compression: A case report and literature review
Zhang J, Wei ZJ, Wang H, Yu YB, Sun HT
- 7147** Topical halometasone cream combined with fire needle pre-treatment for treatment of primary cutaneous amyloidosis: Two case reports
Su YQ, Liu ZY, Wei G, Zhang CM
- 7153** Simultaneous robot-assisted approach in a super-elderly patient with urothelial carcinoma and synchronous contralateral renal cell carcinoma: A case report
Yun JK, Kim SH, Kim WB, Kim HK, Lee SW
- 7163** Nursing a patient with latent autoimmune diabetes in adults with insulin-related lipodystrophy, allergy, and exogenous insulin autoimmune syndrome: A case report
He F, Xu LL, Li YX, Dong YX
- 7171** Incidental diagnosis of medullary thyroid carcinoma due to persistently elevated procalcitonin in a patient with COVID-19 pneumonia: A case report
Saha A, Mukhopadhyay M, Paul S, Bera A, Bandyopadhyay T
- 7178** Macular hole following phakic intraocular lens implantation: A case report
Li XJ, Duan JL, Ma JX, Shang QL

LETTER TO THE EDITOR

- 7184** Is every microorganism detected in the intensive care unit a nosocomial infection? Isn't prevention more important than detection?

Yildirim F, Karaman I, Yildirim M

ABOUT COVER

Editorial Board Member of *World Journal of Clinical Cases*, Jie-Feng Huang, PhD, Associate Chief Physician, Associate Professor, Department of Orthopaedics and Traumatology, The First Affiliated Hospital of Zhejiang Chinese Medical University, Hangzhou 310006, Zhejiang Province, China. 40983285@qq.com

AIMS AND SCOPE

The primary aim of *World Journal of Clinical Cases* (WJCC, *World J Clin Cases*) is to provide scholars and readers from various fields of clinical medicine with a platform to publish high-quality clinical research articles and communicate their research findings online.

WJCC mainly publishes articles reporting research results and findings obtained in the field of clinical medicine and covering a wide range of topics, including case control studies, retrospective cohort studies, retrospective studies, clinical trials studies, observational studies, prospective studies, randomized controlled trials, randomized clinical trials, systematic reviews, meta-analysis, and case reports.

INDEXING/ABSTRACTING

The WJCC is now abstracted and indexed in Science Citation Index Expanded (SCIE, also known as SciSearch®), Journal Citation Reports/Science Edition, Current Contents®/Clinical Medicine, PubMed, PubMed Central, Scopus, Reference Citation Analysis, China National Knowledge Infrastructure, China Science and Technology Journal Database, and Superstar Journals Database. The 2022 Edition of Journal Citation Reports® cites the 2021 impact factor (IF) for WJCC as 1.534; IF without journal self cites: 1.491; 5-year IF: 1.599; Journal Citation Indicator: 0.28; Ranking: 135 among 172 journals in medicine, general and internal; and Quartile category: Q4. The WJCC's CiteScore for 2021 is 1.2 and Scopus CiteScore rank 2021: General Medicine is 443/826.

RESPONSIBLE EDITORS FOR THIS ISSUE

Production Editor: *Hua-Ge Yin*; Production Department Director: *Xu Guo*; Editorial Office Director: *Jin-Lei Wang*.

NAME OF JOURNAL

World Journal of Clinical Cases

ISSN

ISSN 2307-8960 (online)

LAUNCH DATE

April 16, 2013

FREQUENCY

Thrice Monthly

EDITORS-IN-CHIEF

Bao-Gan Peng, Jerzy Tadeusz Chudek, George Kontogeorgos, Maurizio Serati, Ja Hyeon Ku

EDITORIAL BOARD MEMBERS

<https://www.wjgnet.com/2307-8960/editorialboard.htm>

PUBLICATION DATE

July 16, 2022

COPYRIGHT

© 2022 Baishideng Publishing Group Inc

INSTRUCTIONS TO AUTHORS

<https://www.wjgnet.com/bpg/gerinfo/204>

GUIDELINES FOR ETHICS DOCUMENTS

<https://www.wjgnet.com/bpg/GerInfo/287>

GUIDELINES FOR NON-NATIVE SPEAKERS OF ENGLISH

<https://www.wjgnet.com/bpg/gerinfo/240>

PUBLICATION ETHICS

<https://www.wjgnet.com/bpg/GerInfo/288>

PUBLICATION MISCONDUCT

<https://www.wjgnet.com/bpg/gerinfo/208>

ARTICLE PROCESSING CHARGE

<https://www.wjgnet.com/bpg/gerinfo/242>

STEPS FOR SUBMITTING MANUSCRIPTS

<https://www.wjgnet.com/bpg/GerInfo/239>

ONLINE SUBMISSION

<https://www.f6publishing.com>



Observational Study

Influence of the water jet system vs cavitron ultrasonic surgical aspirator for liver resection on the remnant liver

Takehiko Hanaki, Ayumi Tsuda, Teppei Sunaguchi, Keisuke Goto, Masaki Morimoto, Yuki Murakami, Kyoichi Kihara, Tomoyuki Matsunaga, Manabu Yamamoto, Naruo Tokuyasu, Teruhisa Sakamoto, Toshimichi Hasegawa, Yoshiyuki Fujiwara

Specialty type: Medicine, research and experimental

Provenance and peer review: Unsolicited article; Externally peer reviewed.

Peer-review model: Single blind

Peer-review report's scientific quality classification

Grade A (Excellent): 0
Grade B (Very good): 0
Grade C (Good): C
Grade D (Fair): D
Grade E (Poor): 0

P-Reviewer: Li HL, China; Wang LM, China

A-Editor: Yao QG, China

Received: November 8, 2021

Peer-review started: November 8, 2021

First decision: April 19, 2022

Revised: April 23, 2022

Accepted: May 27, 2022

Article in press: May 27, 2022

Published online: July 16, 2022



Takehiko Hanaki, Ayumi Tsuda, Teppei Sunaguchi, Keisuke Goto, Masaki Morimoto, Yuki Murakami, Kyoichi Kihara, Tomoyuki Matsunaga, Manabu Yamamoto, Naruo Tokuyasu, Teruhisa Sakamoto, Toshimichi Hasegawa, Yoshiyuki Fujiwara, Division of Gastrointestinal and Pediatric Surgery, Department of Surgery, Tottori University Faculty of Medicine, Yonago 683-8504, Tottori, Japan

Corresponding author: Takehiko Hanaki, MD, PhD, Assistant Professor, Division of Gastrointestinal and Pediatric Surgery, Department of Surgery, Tottori University Faculty of Medicine, 36-1, Nishi-Cho, Yonago 683-8504, Tottori, Japan. hanaki-ttr@umin.ac.jp

Abstract

BACKGROUND

Several methods, such as finger fracture, Pean crush, cavitron ultrasonic surgical aspirator (CUSA), and water jet (WJ), are used for hepatic parenchymal dissection in liver surgery. CUSA is the conventional method in Japan. WJ is a relatively novel method for parenchymal dissection. Although it has several advantages, such as lower volume of blood loss and shorter operative time, the effect of the WJ system for hepatic dissection on the remnant liver has not yet been investigated.

AIM

To investigate and compare the effect of the WJ method *vs* CUSA on the remnant liver cut surface.

METHODS

This observational study compared the two types of parenchymal transection methods (WJ *vs* CUSA) in liver surgery. In total, 24 and 40 patients who underwent hepatectomy using the WJ method and CUSA, respectively, were included in the analysis. Accordingly, the clinicopathological characteristics and clinical outcomes of 24 and 40 patients were compared. Furthermore, postoperative contrast-enhanced computed tomography (CT) scan was performed to assess the cut surface length of the remnant liver and the degenerative thickness of the areas with a reduced contrast effect in the dissected plane. Then, the two groups were compared.

RESULTS

On CT scan, the median areas of denaturation in the liver dissection planes were 522 (range: 109.5-1242) mm² in the CUSA group and 324 (range: 93.6-1529) mm² in the WJ group. The area did not significantly differ between the two groups; however, the denaturation thickness of the WJ group was significantly lower than that of the CUSA group [5.8 (range: 0.7-11.1) mm *vs* 3.3 (range: 1.7-10.4) mm, $P < 0.001$].

CONCLUSION

The WJ group had significantly thinner contrast-enhanced areas in the post hepatectomy detached section than the CUSA group.

Key Words: Water jet; Cavitron ultrasonic surgical aspirator; Energy device; Hepatic parenchymal dissection; Liver resection

©The Author(s) 2022. Published by Baishideng Publishing Group Inc. All rights reserved.

Core Tip: We evaluated the denaturation degree of the liver dissection plane on computed tomography (CT) scan and compared the cavitron ultrasonic surgical aspirator and water jet (WJ) method. The perioperative outcomes were almost similar. However, the WJ method had a lower loss of contrast effect on the liver dissection plane. Moreover, we found a positive correlation between the denaturation degree on CT scans and the postoperative peak of hepatic enzymes. The reduced contrast effect on CT scan reflects thermal degeneration during hepatectomy, and the WJ method may be more advantageous in preserving the remnant functioning liver volume during hepatectomy.

Citation: Hanaki T, Tsuda A, Sunaguchi T, Goto K, Morimoto M, Murakami Y, Kihara K, Matsunaga T, Yamamoto M, Tokuyasu N, Sakamoto T, Hasegawa T, Fujiwara Y. Influence of the water jet system *vs* cavitron ultrasonic surgical aspirator for liver resection on the remnant liver. *World J Clin Cases* 2022; 10(20): 6855-6864

URL: <https://www.wjgnet.com/2307-8960/full/v10/i20/6855.htm>

DOI: <https://dx.doi.org/10.12998/wjcc.v10.i20.6855>

INTRODUCTION

Hepato-parenchymal transection is an essential step in liver surgery. Since Langenbuch[1] reported the first successful liver surgery in 1888, different hepatectomy methods have been investigated and performed[2,3]. The major tools used to dissociate the liver parenchyma include the classical finger crush, which can dissociate the liver parenchyma using the finger[4], the more modern Pean-clump crushing method[5], cavitron ultrasonic surgical aspirator (CUSA), which can dissociate the liver parenchyma by applying an oscillator with a suction device[3], and water jet (WJ) scalpel, which can dissociate the liver parenchyma with a high-pressure saline flow[6]. All these methods are used for parenchymal fragmentation in the hepatic incision, and the emerging vascular structures such as the Glissonean sheath and veins must be incised after ligation *via* suturing, clipping, or sealing with energy devices, depending on their diameters. Thus, the hepatic incision can be divided into two steps: incision of the liver parenchyma and incision after ligation for the emerging small vascular structures.

The WJ method removes hepatocytes and exposes the vascular and bile duct structures between the liver parenchyma by jetting saline[7]. Initially, high-pressure fluid cutting was a technique developed in the glass and metal industries[8]. Since the application of the WJ system in the medical field in 1982[9], it has been marketed as a commercial product (Helix Hydro-Jet®, Erbe Elektromedizin GmbH, Tübingen, Germany) since 2001. As an extension model of the WJ system, Erbejet2® (Erbe Elektromedizin GmbH, Tübingen, Germany) has been marketed and used worldwide. Hepatectomy using the WJ method is relatively novel and is associated with the absence of thermal damage caused by the dissection procedure because saline is used as a jetted effector. In our experience, among the abovementioned methods, the WJ system is the most sensitive in exposing the quite delicate vascular structures in the liver parenchyma without bleeding or bile leakage (Figure 1A-C).

Hemorrhages in the hepatic dissected surface can be treated by compression and suture hemostasis and cauterization with energy devices[10,11]. However, all these methods may cause some damage to the remnant liver. The remnant functioning liver must be sufficient to prevent postoperative liver failure in liver surgery. Therefore, damage to the hepatic resection surface must be prevented. That is, unnecessary damage leading to a lower remaining liver volume should be avoided. Several reports show the blood loss volume, operative time, and postoperative complications of different liver dissection methods[3,12,13]. However, none have examined the effect of each technique on the liver dissected surface. Considering that the WJ system may have less impact on the residual liver than



DOI: 10.12998/wjcc.v10.i20.6855 Copyright ©The Author(s) 2022.

Figure 1 Images of liver section plane. A: Close-up image of the liver plane dissected using the water jet method. The fine Glissonian pedicles and veins were exposed without bleeding. There was no thermal damage to the resected surface; B: Image of the liver surface dissected with cavitron ultrasonic surgical aspirator (CUSA); C: Image of the liver surface dissected with the water jet. Thermal denaturation of the liver parenchyma with the water jet might be less than that with CUSA.

CUSA, which is a conventional method, as mentioned above, the perioperative outcomes of liver dissection were retrospectively compared. Thus, the current single-center retrospective study evaluated the efficacy of the WJ system and CUSA on the liver transection cut surface during resection.

MATERIALS AND METHODS

Study population and data collection

From April 2019 to April 2021, 87 patients who underwent hepatectomy at Tottori University Hospital were retrospectively assessed, and 64 consecutive patients who had contrast-enhanced computed tomography (CE-CT) scan with portal phase study on postoperative day (POD) 7 (\pm 2 d) were included in this study. However, 13 patients who did not undergo postoperative CE-CT scan or who had plain CT scan only because of impaired renal function or allergy to CT scan contrast agents were excluded.

All patients underwent preoperative blood tests within 2 wk before hepatectomy. The following data about preoperative factors were collected: age; sex; body mass index; a medical history of diabetes mellitus; creatinine, albumin, total bilirubin, aspartate aminotransferase (AST), and alanine aminotransferase (ALT) levels; platelet count; prothrombin activity; Child-Pugh score and grade; and degree of liver damage. In addition, data about intra- and postoperative factors were collected according to the degree of hepatic resection (Hr 0/S, 1, 2, or more), operative time, volume of blood loss, highest postoperative AST and ALT levels, surgical complications based on the Clavien-Dindo classification, type and volume of intra- and postoperative blood transfusion, pathological diagnosis, and degree of background liver fibrosis, which was assessed microscopically according to the Inuyama Classification after Mallory-Azan or Elastica van Gieson staining[14]. Moreover, the degree of liver fibrosis was assessed, and the patients were divided into two groups: The non- and early cirrhotic (F0 + F1 + F2) group and the chronic cirrhotic (F3 + F4) group. The highest AST and ALT levels were adopted based on examining blood samples collected on PODs 1, 2, 3, 5, and 7.

All procedures carried out in this study involving human participants were in accordance with the ethical standards of the institutional and/or national research committees and with the 1964 Declaration of Helsinki and its later amendments or comparable ethical standards. This study was approved by the ethics committee of Tottori University School of Medicine (approval No. 21A081). This study did not perform any animal studies. In addition, due to the study's retrospective nature, written consent from the patient was not required.

Liver surgery

In total, 64 hepatectomies were performed at Tottori University Hospital, and two surgeons (Hanaki T and Sakamoto T) specializing in liver surgery performed all surgeries. Moreover, 40 patients underwent hepatectomies using CUSA (CUSA EXcel Plus; Integra LifeSciences Corp., Plainsboro, NJ, United States), and 24 patients had surgeries with the WJ system (ERBE JET2; Erbe Elektromedizin GmbH, Tübingen, Germany). The following settings were applied in the WJ system: saline blow for 35 bar (35×10^4 Pa), which is the default value, with continuous suction pressure of -0.8 bar (-8×10^3 Pa). Until November 2019, parenchymal dissection of the liver was performed using CUSA. Then, unless there are institutional constraints, the WJ is used as the primary technique for liver dissection. The saline-cooled monopolar soft-coagulation system (VIO300D; Erbe Elektromedizin GmbH, Tübingen, Germany) was utilized for hemostasis, particularly for bleeding in the dissected surface of the liver in both groups. The vessels exposed during parenchymal transection (1 mm or less) were dissected using coagulating shears (Harmonic 1000HDI; Ethicon, Inc., Cincinnati, OH, United States), and vessels measuring 1 mm or more were ligated with 4-0 or 3-0 silk and were dissected. In principle, during liver dissection, the

intermittent Pringle's maneuver was performed with ≤ 15 min of clamping and ≥ 5 min of de-clamping. The extent of hepatic resection performed was classified as follows: Hr0 + S: hepatic resection of one subsegment or not exceeding one subsegment, Hr1: hepatic resection of one segment, and Hr2: hepatic resection of two segments according to the general rules for the clinical and pathological study of primary liver cancer[15].

CT scan protocols and administration of contrast agent

All patients underwent a preoperative multidetector CT scan (64 sections) with Aquilion CX (Canon Inc., Tokyo, Japan) or Discovery CT 750HD (G.E. Healthcare, Chicago, IL, United States) on POD 7 (± 2). 580 mg of iodine/kg was administrated as the contrast agent using a mechanical injector with variable injection speeds *via* a plastic intravenous catheter typically placed in the median cubital vein within 30 s. A scan delay of 60 s was performed for portal phase imaging. The generated CT reconstruction images with 5-mm thickness of the upper abdomen were used for all imaging evaluations in this study.

Qualitative image analysis

The images were saved in DICOM format and transferred to an image workstation with a dedicated image assessment software (SYNAPSE SAI viewer; FUJIFILM Corp., Tokyo, Japan). As mentioned above, the CE-CT slice of the portal phase study with the longest liver dissection length was used as the evaluation image of the dissected liver. The CT slice of the liver section with the longest dissection length (mm) was measured manually (Figure 2A). In the same slice, the area (mm²) of the liver section where the contrast effect was reduced due to thermal denaturation was also measured manually, thereby preventing fluid collection around the hepatic transection plane (Figure 2B). Next, the denatured area-to-the liver dissected length ratio was calculated as the denaturation index (DI), or denatured thickness: denatured area (mm²)/dissected length (mm) (Figure 2). When multiple hepatectomies were performed in the same liver, the abovementioned data were calculated for each slice with the longest liver dissection lengths and largest areas. The sum of the data for lengths and areas, respectively, were then used as the representative data of each patient.

Statistical analysis

All graphing and statistical analyses were performed using the Statistical Package for the Social Sciences software for Macintosh version 25.0 (IBM Corp., Armonk, NY, United States). A two-sided *P* value of < 0.05 was considered statistically significant. Continuous data were presented as median with range. The Mann-Whitney *U* test and the Fisher's exact test or the chi-square test evaluated differences in continuous and categorical variables, respectively. The correlation tests (Pearson correlation) examined relationships between numerical variables.

RESULTS

Characteristics of patients

In total, 64 patients were included in this study. Table 1 shows the CUSA and WJ groups' pre-, intra-, and postoperative characteristics. In total, 40 (28 men and 12 women) and 24 (15 men and 9 women) patients underwent hepatectomy using CUSA and the WJ system, respectively. Preoperative factors such as age, sex, physical condition, results of the blood test including indocyanine green, and background liver status did not differ significantly between the two groups. Twenty-four (60%) patients underwent surgery using the open approach in the CUSA group. Meanwhile, in the WJ group, all patients underwent hepatectomy with the open approach, with a significantly higher laparotomy rate ($P < 0.001$). Most patients (82.4% in the CUSA group and 95.8% in the WJ group, $P = 0.241$) did not undergo extrahepatic bile duct resection. There was no significant difference in terms of Hr volume or operative time. However, the WJ group had a significantly higher volume of blood loss than the CUSA group (432 mL *vs* 227.5 mL, $P = 0.047$). By contrast, there were no significant differences in the incidence of postoperative complications, incidence and severity of biliary fistulas, and intra- and postoperative red blood cell and fresh frozen plasma transfusions. There was no in-hospital mortality in both groups. The length of postoperative hospital stay did not significantly differ between the two groups. Histological evaluation showed no significant differences in the incidence rate of chronic cirrhosis (F3 or 4) between the two groups ($P = 0.778$).

Evaluation of CT values

Table 2 depicts the results of the evaluation of CE-CT images. The median lengths of the liver dissection plane were 95.3 (range: 21.5-233.9) mm in the CUSA group and 105.9 (range: 50.6-236.1) mm in the WJ group. The median areas of denaturation on the liver dissection planes were 522 (range: 109.5-1242) mm² in the CUSA group and 324 (range: 93.6-1529) mm² in the WJ group. Both lengths and areas did not significantly differ between the two groups ($P = 0.081$, 0.059 , respectively). However, the DI of the WJ group was significantly lower than that of the CUSA group (3.3 *vs* 5.8 mm, $P < 0.001$, Figure 3). The

Table 1 Comparison of patient clinico-pathological characteristics according to transection methods

Characteristics	CUSA (n = 40)	Water jet (n = 24)	P value
Pre-operative			
Age (yr)	72 (36-87)	73 (54-83)	0.588
Sex (male/female)	28/12	15/9	0.589
BMI (kg/m ²)	22.5 (16.0-28.0)	22.5 (16.1-44.9)	0.782
ASA-PS (1/2/3/4)	2/29/9/0	0/15/8/1	0.290
Medical history of DM (yes/no)	11/29	9/15	0.419
Chemical examination of blood			
Creatine (mg/dL)	0.72 (0.19-1.32)	0.78 (0.48-8.10)	0.244
Albumin (g/dL)	4.15 (3.10-4.80)	4.15 (3.50-4.90)	0.895
Total bilirubin (mg/dL)	0.75 (0.20-2.30)	0.70 (0.20-1.20)	0.198
Aspartate transaminase (IU/L)	25 (14-134)	24 (9-52)	0.546
Alanine transaminase (IU/L)	22 (10-125)	21 (9-50)	0.593
Platelet ($\times 10^5/\mu\text{L}$)	19 (8.8-84)	23 (10.9-93)	0.204
Prothrombin time (%)	95.6 (49.1-127.5)	99.7 (64.9-112.3)	0.375
ICG-R15 (%)	12 (3-27)	12.5 (2-29)	0.722
ICG (K)	0.15 (0.06-0.24)	0.15 (0.10-0.25)	0.543
Child-Pugh grade (5/6/7 or more)	34/6/0	22/2/0	0.699
Liver damage (A/B/C)	39/1/0	23/1/0	0.999
Intra-operative			
Operative procedure			
Approach (open/laparoscopic)	24/16	24/0	< 0.001
Hr (0 + S, 1, 2)	23/7/10	8/8/8	0.151
Extrahepatic bile duct resection (yes/no)	6/34	1/23	0.241
Operation time (min)	235 (76-980)	298 (187-543)	0.061
Blood loss (mL)	227.5 (0-1820)	432 (95-1165)	0.047
Post-operative			
Clavien Dindo classification (0 or I/II/III/IV)	32/4/4/0	14/3/7/0	0.118
Biliary fistula grade (none or A/B/C)	38/2/0	22/2/0	0.627
Blood transfusion (include intraoperative)			
Red blood cell (yes/no)	1/39	2/22	0.551
Fresh frozen plasma (yes/no)	5/35	7/17	0.113
Highest value of blood examination			
Aspartate transaminase (IU/L)	368 (40-1653)	188 (37-1084)	0.315
Alanine transaminase (IU/L)	279.5 (37-2026)	147 (33-1236)	0.241
In hospital mortality	0	0	NA
Post-operative hospital stay (d)	8 (5-57)	8.5 (6-190)	0.949
Histological diagnosis			
			0.028
Hepatocellular carcinoma (%)	18 (45)	12 (50)	
Intrahepatic cholangiocarcinoma (%)	1 (2.5)	6 (25)	
Combined hepatocellular and cholangiocarcinoma (%)	1 (2.5)	1 (4.2)	
Bile duct cancer (%)	7 (30)	0 (0)	

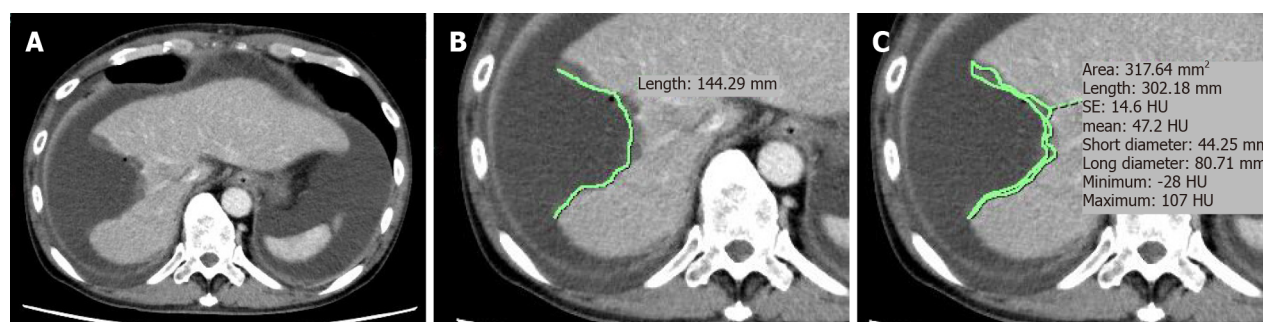
Metastatic cancer (%)	12 (2.5)	4 (16.7)	
Other (benign lesion) (%)	1 (17.5)	1 (4.2)	
F (0, 1 or 2/3 or 4)	28/12	18/6	0.778

BMI: Body mass index; CUSA: Cavitron ultrasonic surgical aspirator; DM: Diabetes mellitus; ICG: Indocyanine green; NA: Not available.

Table 2 Comparison of computed tomography values according to transection methods

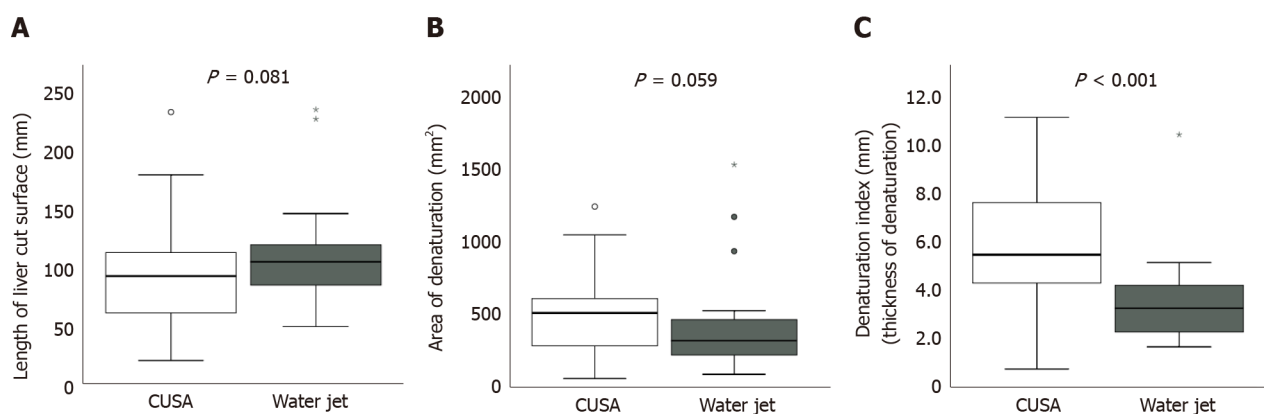
Post-operative CT values	CUSA (n = 40)	Water jet (n = 24)	P value
Sum of dissection length (mm)	95.3 (21.5-233.9)	106 (50.6-236.1)	0.081
Sum of denaturation area (mm ²)	522 (109.5-1242)	324 (93.6-1529)	0.059
Denaturation index (denaturation thickness, mm)	5.8 (0.7-11.1)	3.3 (1.7-10.4)	< 0.001

CT: Computed tomography; CUSA: Cavitron ultrasonic surgical aspirator.



DOI: 10.12998/wjcc.v10.i20.6855 Copyright ©The Author(s) 2022.

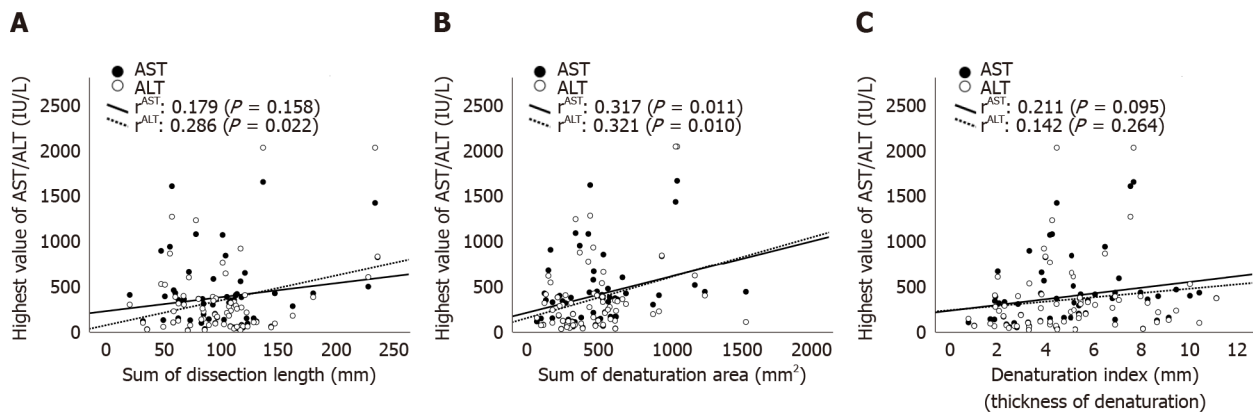
Figure 2 Measurement of computed tomography scan values. A: Case 64 — water jet dissection: Computed tomography section of the portal venous phase with the maximum liver dissection length; B: Measurement of liver dissection length; C: Measurement of denaturation area of the cut surface.



DOI: 10.12998/wjcc.v10.i20.6855 Copyright ©The Author(s) 2022.

Figure 3 Comparison of computed tomography values between the two groups. A: Length of the liver cut surface; B: Area of denaturation; C: Denaturation index (Mann-Whitney U test). CUSA: Cavitron ultrasonic surgical aspirator.

scatter plot of the CT values (length, area, and DI) obtained in this study was established to explore its implications in relation to the highest postoperative AST and ALT levels (Figure 4A-C). The scatter plots of the highest postoperative AST/ALT values and area of denaturation had a weak but significant positive correlation with these indices ($r^{\text{AST}} = 0.317$, $P = 0.011$; $r^{\text{ALT}} = 0.312$, $P = 0.010$, Figure 4B).



DOI: 10.12998/wjcc.v10.i20.6855 Copyright ©The Author(s) 2022.

Figure 4 Correlation between the highest postoperative aspartate aminotransferase and alanine aminotransferase levels and computed tomography values. A: Dissection length; B: Denaturation area; C: Denaturation index. There was a significant positive correlation between the highest aspartate aminotransferase/alanine aminotransferase levels and denaturation area. AST: Aspartate aminotransferase; ALT: Alanine aminotransferase.

DISCUSSION

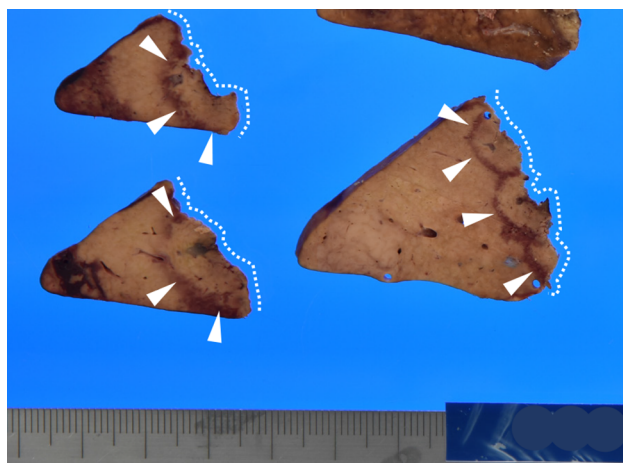
This study showed that patients who underwent hepatectomy in the WJ group had a significantly lower denaturation thickness (DI) on the hepatic dissection plane than those in the CUSA group. To the best of our knowledge, this is the first study that evaluated the effect of transection methods on the hepatic resection plane based on the examination of a real human body.

Hepatectomy is routinely performed to resect benign lesions and primary and metastatic neoplasms in the liver and is the only curative therapy for malignancies[16-18]. Moreover, it is a complex surgical procedure. For ultimate simplicity, it can be divided into two steps: dissection of the liver parenchyma as well as ligation and dissection of the exposed vessels. These steps must be performed safely to secure the vessels safely. In this study, the WJ method could expose the small vessels without damaging them more than the CUSA method. Further, it first examined whether the WJ method cannot cause bleeding. Results showed that the WJ group had a higher volume of blood loss than the CUSA group (Table 1). However, this result did not differ from our intraoperative impression. This might be attributed to the fact that, in addition to the actual volume of intraoperative blood loss, the volume of saline used to dissect the liver parenchyma was calculated together with the volume of blood loss. In relation to this, there was no significant difference in terms of intra- and postoperative blood (fresh frozen plasma and red blood cell) transfusion rate between the CUSA and WJ groups. Furthermore, there was less degeneration of the liver parenchyma after hepatic incision using the WJ method (Figure 1B and C). This could be attributed to the possibility that the WJ group required less electrocautery and suturing procedures for minor bleeding. Moreover, the WJ group had a significantly higher DI or degenerative thickness of the hepatic dissection than the CUSA group based on the CT values examined in this study (Figure 3C). In addition, DI was positively correlated, although weakly, with the highest postoperative AST and ALT levels. Therefore, this index might have some biological significance in indicating damage in the remnant liver. The ability of the WJ method to expose the fine vessels in the liver parenchyma was better based on our experience. The WJ method had a better exposure ability in preserving these vessels. This reduces the need for electrocauterization for bleeding, resulting in a reduced DI in the hepatic dissection plane.

It is quite difficult to directly validate the relevance of histological changes to the site of CT changes *in vivo* and in clinical settings. However, thermal degeneration of liver sections caused by electrocautery is often observed on the cross-section of a specimen by hepato-biliary-pancreatic surgeons (Figure 5). Even in *in vivo* remnant livers, cauterization, or suturing for hemorrhage results in changes observed in the specimen. Hence, the contrast effect at the detachment site was reduced (Figure 2), which might have been observed as a lower DI in the liver resection surface.

The current study had several limitations. That is, it has a retrospective design, the sample size was small, and there was an unclear relationship between CT values and clinical data. Hence, a prospective study with cautious planning should be performed to determine whether a small area of denaturation in the liver section is associated with preventing post-hepatectomy liver failure.

WJ hepatectomy has a short learning curve and can be easily mastered[8]. In this study, in terms of safety, WJ hepatectomy was not inferior to CUSA hepatectomy, which is a conventional method. The WJ method can effectively reduce thermal degeneration during dissection of the preserved liver and can be one of the most effective liver dissection techniques.



DOI: 10.12998/wjcc.v10.i20.6855 Copyright ©The Author(s) 2022.

Figure 5 Example of the liver specimen (cut surface). A thermal denaturation on a dissected plane of the liver; 5-8 mm of thermal denaturation (arrowhead) could be observed in the hepatic resection margin (dashed line) due to electrocauteries.

CONCLUSION

The WJ method is as safe as CUSA. However, it is associated with a slightly higher volume of intraoperative blood loss and, possibly, lower thermal damage to the detached liver section. Moreover, it may be more advantageous in preserving the remnant functioning liver volume during massive hepatectomy.

ARTICLE HIGHLIGHTS

Research background

Reports on the usefulness of the water jet (WJ) technique as a relatively new liver resection method have been increasing. Although there have been many reports on the effectiveness of WJ in improving blood loss and operation time, there has been no evaluation of its effect on the hepatic dissection plane.

Research motivation

Our department has used the cavitron ultrasonic surgical aspirator (CUSA) method for liver parenchymal sections for many years; however, we recently introduced the WJ for liver resection. Based on this experience, we observed the liver section planes of the WJ and CUSA methods, and we had the impression that the WJ method had less thermal degeneration on the dissected plane. Although less degeneration of the residual liver may lead to preservation of residual liver function and further contribute to avoiding postoperative liver failure, there are no previous reports evaluating the denaturation of the liver dissected cross-section by the method of liver dissection.

Research objectives

To investigate and compare the impact of the WJ and CUSA methods on the residual liver cut surface.

Research methods

Forty cases of liver resection with CUSA and 24 cases of liver resection with WJ who underwent liver resection between 2019 and 2021 and had contrast-enhanced computed tomography (CT) during postoperative hospitalization were included in this retrospective study. Furthermore, the postoperative CT scans were used to assess the cut surface length of the remnant liver and the degenerative thickness of the areas with a reduced contrast effect in the dissected plane.

Research results

On CT scan, the median areas of denaturation in the liver dissection planes were 522 (range: 109.5-1242) mm² in the CUSA group and 324 (range: 93.6-1529) mm² in the WJ group. The area did not significantly differ between the two groups; however, the denaturation thickness of the WJ group was significantly lower than that of the CUSA group [5.8 (range: 0.7-11.1) mm *vs* 3.3 (range: 1.7-10.4), *P* < 0.001].

Research conclusions

Hepatectomies using WJ showed significantly thinner low-contrast areas in the dissected plane than

CUSA.

Research perspectives

The WJ hepatectomy may contribute to safe liver resection in terms of minor thermal damage on the residual liver and avoiding postoperative liver failure.

FOOTNOTES

Author contributions: Hanaki T designed the study and drafted the initial manuscript; Tsuda A performed the all statistical analysis; Sunaguchi T, Goto K, Morimoto M, Murakami Y, Kihara K, Matsunaga T, Yamamoto M and Tokuyasu N participated in the acquisition and analysis of data; Hanaki T and Sakamoto T performed the surgery; Hasegawa T and Fujiwara Y revised the article critically for important intellectual content.

Institutional review board statement: The study was reviewed and approved by the institutional review board of Tottori University, Faculty of Medicine (approval No. 21A081).

Informed consent statement: The need for patients' informed written consent was waived due to the retrospective nature of the study.

Conflict-of-interest statement: All the authors report no relevant conflicts of interest for this article.

Data sharing statement: No additional data are available.

STROBE statement: The authors have read the STROBE Statement-checklist of items, and the manuscript was prepared and revised according to the STROBE Statement-checklist of items.

Open-Access: This article is an open-access article that was selected by an in-house editor and fully peer-reviewed by external reviewers. It is distributed in accordance with the Creative Commons Attribution NonCommercial (CC BY-NC 4.0) license, which permits others to distribute, remix, adapt, build upon this work non-commercially, and license their derivative works on different terms, provided the original work is properly cited and the use is non-commercial. See: <https://creativecommons.org/licenses/by-nc/4.0/>

Country/Territory of origin: Japan

ORCID number: Takehiko Hanaki 0000-0002-4008-0207; Ayumi Tsuda 0000-0002-4883-0893; Teppei Sunaguchi 0000-0001-5860-0023; Keisuke Goto 0000-0003-1888-5727; Masaki Morimoto 0000-0001-5937-4056; Yuki Murakami 0000-0001-6882-2439; Kyoichi Kihara 0000-0002-7363-6136; Tomoyuki Matsunaga 0000-0003-4563-8940; Manabu Yamamoto 0000-0001-8850-979X; Naruo Tokuyasu 0000-0002-1544-8719; Teruhisa Sakamoto 0000-0002-8710-1511; Toshimichi Hasegawa 0000-0003-0265-2910; Yoshiyuki Fujiwara 0000-0002-3805-9003.

S-Editor: Gao CC

L-Editor: A

P-Editor: Gao CC

REFERENCES

- 1 **Langenbuch C.** Ein Fall von Resektion eines linksseitigen Schnürlappens der Leber. Heilung. In: Heinz-Peter S, Winau R, Rudolf H. Erste Operationen Berliner Chirurgen 1817–1931. De Gruyter: Walter de Gruyter GmbH, 2015: 59-61
- 2 **Bismuth H,** Houssin D, Castaing D. Major and minor segmentectomies "régliées" in liver surgery. *World J Surg* 1982; **6**: 10-24 [PMID: 7090385 DOI: 10.1007/BF01656369]
- 3 **Kokudo N,** Kimura H, Yamamoto H, Seki M, Ohta H, Matsubara T, Takahashi T. Hepatic parenchymal transection using ultrasonic coagulating shears: a preliminary report. *J Hepatobiliary Pancreat Surg* 2000; **7**: 295-298 [PMID: 10982629 DOI: 10.1007/s005340070051]
- 4 **Gans H,** Mori K, Matsumoto K, Tan BH. Evaluation of the effects of the finger fracture technique used in hepatic resection. *Surg Gynecol Obstet* 1974; **138**: 885-890 [PMID: 4207935]
- 5 **Ishizaki Y,** Yoshimoto J, Sugo H, Miwa K, Kawasaki S. Hepatectomy using traditional Péan clamp-crushing technique under intermittent Pringle maneuver. *Am J Surg* 2008; **196**: 353-357 [PMID: 18558388 DOI: 10.1016/j.amjsurg.2007.09.046]
- 6 **Rau HG,** Duessel AP, Wurzbacher S. The use of water-jet dissection in open and laparoscopic liver resection. *HPB (Oxford)* 2008; **10**: 275-280 [PMID: 18773110 DOI: 10.1080/13651820802167706]
- 7 **Papachristou DN,** Barters R. Resection of the liver with a water jet. *Br J Surg* 1982; **69**: 93-94 [PMID: 7059775 DOI: 10.1002/bjs.1800690212]
- 8 **Vollmer CM,** Dixon E, Sahajpal A, Cattal MS, Grant DR, Gallinger S, Taylor BR, Greig PD. Water-jet dissection for parenchymal division during hepatectomy. *HPB (Oxford)* 2006; **8**: 377-385 [PMID: 18333091 DOI: 10.1080/13651820600839449]

- 9 **Tschan CA**, Tschan K, Krauss JK, Oertel J. First experimental results with a new waterjet dissector: Erbejet 2. *Acta Neurochir (Wien)* 2009; **151**: 1473-1482 [PMID: [19404573](#) DOI: [10.1007/s00701-009-0333-2](#)]
- 10 **Itoh S**, Fukuzawa K, Shitomi Y, Okamoto M, Kinoshita T, Taketomi A, Shirabe K, Wakasugi K, Maehara Y. Impact of the VIO system in hepatic resection for patients with hepatocellular carcinoma. *Surg Today* 2012; **42**: 1176-1182 [PMID: [22993104](#) DOI: [10.1007/s00595-012-0306-6](#)]
- 11 **Ishiko T**, Inomata Y, Beppu T, Asonuma K, Okajima H, Takeiti T, Tikamoto A, Yamamoto H, Baba H. An improved technique for liver transection using a new device for soft coagulation in living donor hepatectomy. *Hepatogastroenterology* 2012; **59**: 1907-1910 [PMID: [22819911](#)]
- 12 **Liu F**, Wei Y, Li H, Wang W, Wen T, Wu H, Yang J, Xu M, Li B. LigaSure vs CUSA for parenchymal transection during laparoscopic hepatectomy in hepatocellular carcinoma patients with cirrhosis: a propensity score-matched analysis. *Surg Endosc* 2018; **32**: 2454-2465 [PMID: [29124405](#) DOI: [10.1007/s00464-017-5947-5](#)]
- 13 **Bodzin AS**, Leiby BE, Ramirez CG, Frank AM, Doria C. Liver resection using cavitron ultrasonic surgical aspirator (CUSA) vs harmonic scalpel: a retrospective cohort study. *Int J Surg* 2014; **12**: 500-503 [PMID: [24560847](#) DOI: [10.1016/j.ijssu.2014.02.007](#)]
- 14 **Ichida F**, Tsuji T, Omata M, Ichida T, Inoue K, Kamimura T, Yamada G, Hino K, Yokosuka O, Suzuki H. New Inuyama classification; new criteria for histological assessment of chronic hepatitis. *Int Hepatol Commun* 1996; **6**: 112-119 [DOI: [10.1016/s0928-4346\(96\)00325-8](#)]
- 15 **Liver Cancer Study Group of Japan**. Primary Liver Cancer in Japan. 3rd ed. Tokyo: Kanehara & Co., Ltd., 2015
- 16 **Schwartz M**, Roayaie S, Konstadoulakis M. Strategies for the management of hepatocellular carcinoma. *Nat Clin Pract Oncol* 2007; **4**: 424-432 [PMID: [17597707](#) DOI: [10.1038/ncponc0844](#)]
- 17 **Farges O**, Fuks D, Boleslawski E, Le Treut YP, Castaing D, Laurent A, Ducerf C, Rivoire M, Bachellier P, Chiche L, Nuzzo G, Regimbeau JM. Influence of surgical margins on outcome in patients with intrahepatic cholangiocarcinoma: a multicenter study by the AFC-IHCC-2009 study group. *Ann Surg* 2011; **254**: 824-29; discussion 830 [PMID: [22042474](#) DOI: [10.1097/SLA.0b013e318236c21d](#)]
- 18 **Kanas GP**, Taylor A, Primrose JN, Langeberg WJ, Kelsh MA, Mowat FS, Alexander DD, Choti MA, Poston G. Survival after liver resection in metastatic colorectal cancer: review and meta-analysis of prognostic factors. *Clin Epidemiol* 2012; **4**: 283-301 [PMID: [23152705](#) DOI: [10.2147/CLEP.S34285](#)]



Published by **Baishideng Publishing Group Inc**
7041 Koll Center Parkway, Suite 160, Pleasanton, CA 94566, USA

Telephone: +1-925-3991568

E-mail: bpgoffice@wjgnet.com

Help Desk: <https://www.f6publishing.com/helpdesk>

<https://www.wjgnet.com>

